

WAR INDUSTRIES SEWER LATERAL 27, MAIN 22, S.S. WLS.

WILDERNESS

**PROJECT NO.
468-76-245-81307-000-000-001**

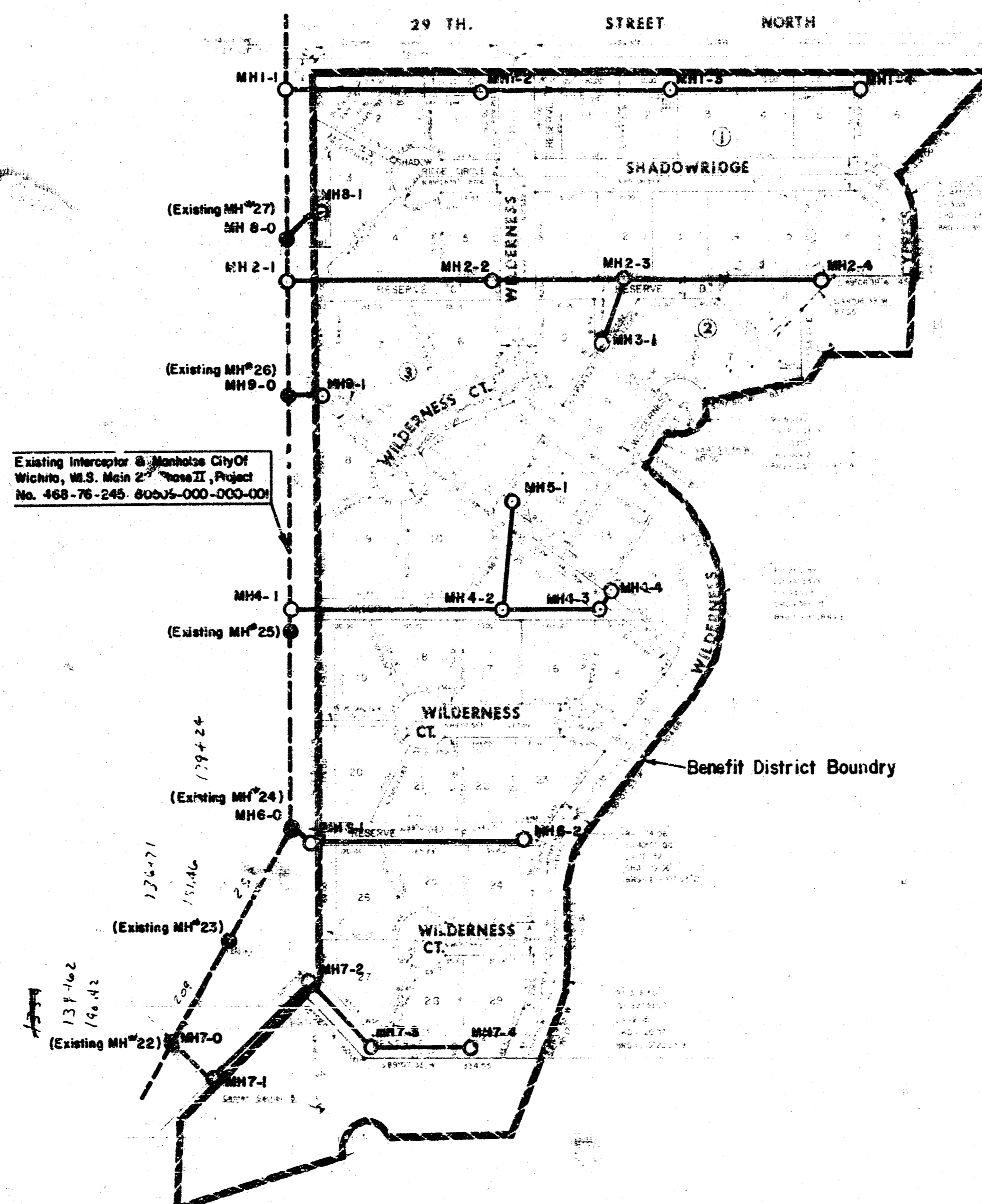
CITY OF WICHITA, KANSAS
MIKE LINDEBAK, CITY ENGINEER
AUGUST, 1983

GENERAL NOTES

1. RISER PIPE SHALL BE INSTALLED TO SERVE INDIVIDUAL LOTS OR TRACTS IN CONJUNCTION WITH NEW SANITARY SEWER CONSTRUCTION, UNLESS OTHERWISE ORDERED BY THE ENGINEER, BECAUSE OF GROUND WATER, UNSTABLE SOIL OR UNUSUALLY DEEP CONSTRUCTION. RISER LOCATIONS SHALL BE AS APPROVED BY THE PROPERTY OWNER WITH THE CONCURRENCE OF THE ENGINEER. INSTALLATION OF RISERS ON SEWERS BECAUSE OF UNUSUAL DEPTH WILL BE REQUIRED WHEN THE SEWER IS DEEPER THAN TWELVE FEET (12'). THE CONTRACTOR WILL BE REQUIRED TO FILE WRITTEN DOCUMENTATION WITH THE ENGINEER IN A FORM APPROVED BY THE ENGINEER INDICATING THE LOCATIONS WHERE RISERS ARE TO BE INSTALLED AS REQUESTED BY THE PROPERTY OWNER OR HIS AUTHORIZED REPRESENTATIVE. RISER PIPE CONSTRUCTION SHALL CONFORM TO THE REQUIREMENTS AS SHOWN ON THE STANDARD RISER DETAIL SHEET.
2. THE CONTRACTOR SHALL BE RESPONSIBLE FOR PRESERVING PROPERTY IRONS. THE CONTRACTOR SHALL BE REQUIRED TO RE-ESTABLISH ANY PROPERTY IRONS WHICH ARE DAMAGED OR DESTROYED BY HIS CONSTRUCTION OPERATIONS. SUCH IRONS SHALL BE RE-ESTABLISHED BY A LICENSED LAND SURVEYOR OR A LICENSED PROFESSIONAL ENGINEER IN ACCORDANCE WITH STATE LAWS.
3. THE CONTRACTOR SHALL COMPLETE THE INSTALLATION OF LINE 1 FROM MANHOLE 1-1 TO 1-3 AND LINE 7 FROM MANHOLE 2-1 TO 2-3, 14 DAYS AFTER STARTUP. COMPLETION OF THESE LINES SHALL INCLUDE CONSOLIDATION OF TRENCHES, CLEARING, TESTING AND COMPLETION OF MANHOLES.
4. ALL EXCESS EXCAVATION WILL BE REMOVED FROM THE SITE BY THE CONTRACTOR.

BENCH MARKS

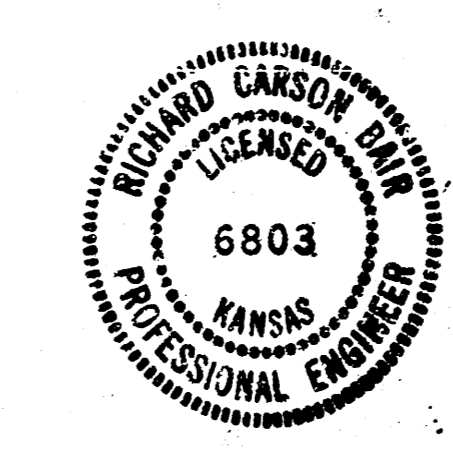
- B.M. = 213.02 City of Wichita B.M. Disc. 44' S. & 48' W. of Rock Rd. & 29th St. N.
- B.M. = 232.82 R.R. Spk. S. Fe. P.P.N. Side 29th St. N. 800' E. of Rock Rd.
- B.M. = 211.83 R.R. Spk. S.W. Fe. Hedge Tree N. Side 29th St. & 1/2 E. of Rock Rd.
- B.M. = 211.44 C. of W. B.M. Disc. 24.5' N. & 9.0' W. of 1/4 Sec. Cor. 1/2 Mile E. of Rock Rd. on 29th St.
- B.M. = 225.42 R.R. Spk. P.P.N. Side 29th St. & 1300' W. of Webb Rd.
- B.M. = 220.526 Webb Rd. & 29th St. of W.B.M. Disc. 44' N. & 38' W. of C.L. Both



As Built
1-1-1
3 & 4

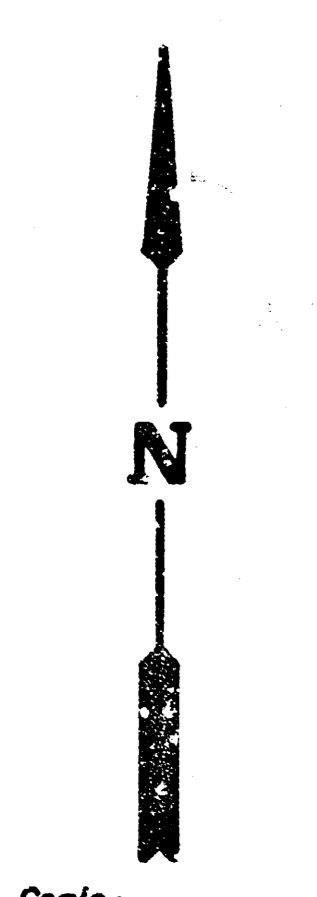
INDEX TO DRAWINGS

SHEET NO.	DESCRIPTION
1	TITLE SHEET
2	LINE 1
3	LINE 2
4	LINE 3, 4, & 5
5	LINE 6 & 7
6	LINE 8 & 9
7	MANHOLE DETAILS
8	FINAL PLAT

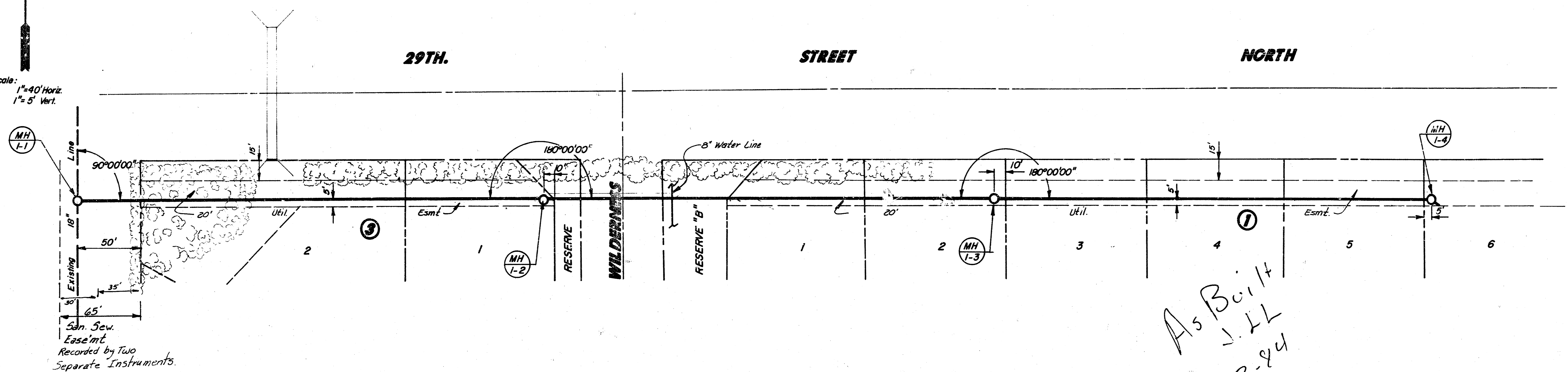


	WILDERNESS SANITARY SEWER EXTENSIONS	Design: RCB Drawn by: DLM Checked by: KMB Date: AUGUST 1983 Job no.
	MID-KANSAS ENGINEERING CONSULTANTS PA 240 NORTH ROCK ROAD SUITE 100 WICHITA, KANSAS 67206	662-6561

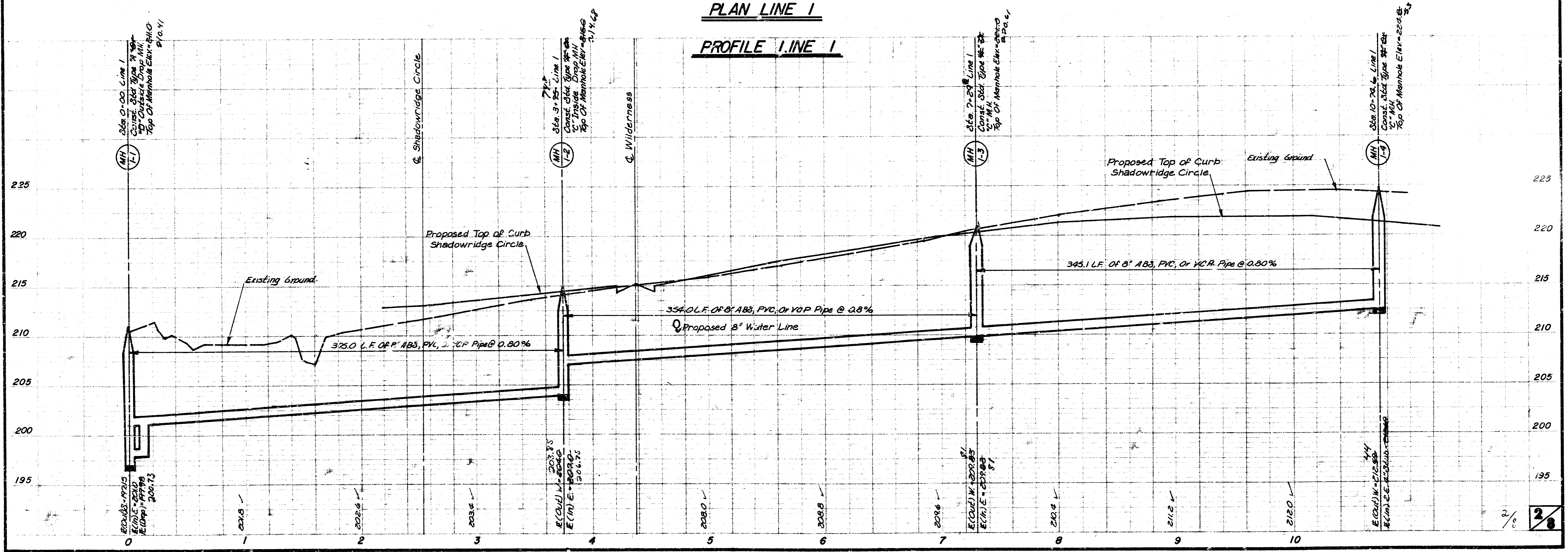
WILDERNESS ADDITION
 LATERAL 27, MAIN 22, SAN SEW. W.S. NO.
 468-76-245-81307-000-000-001



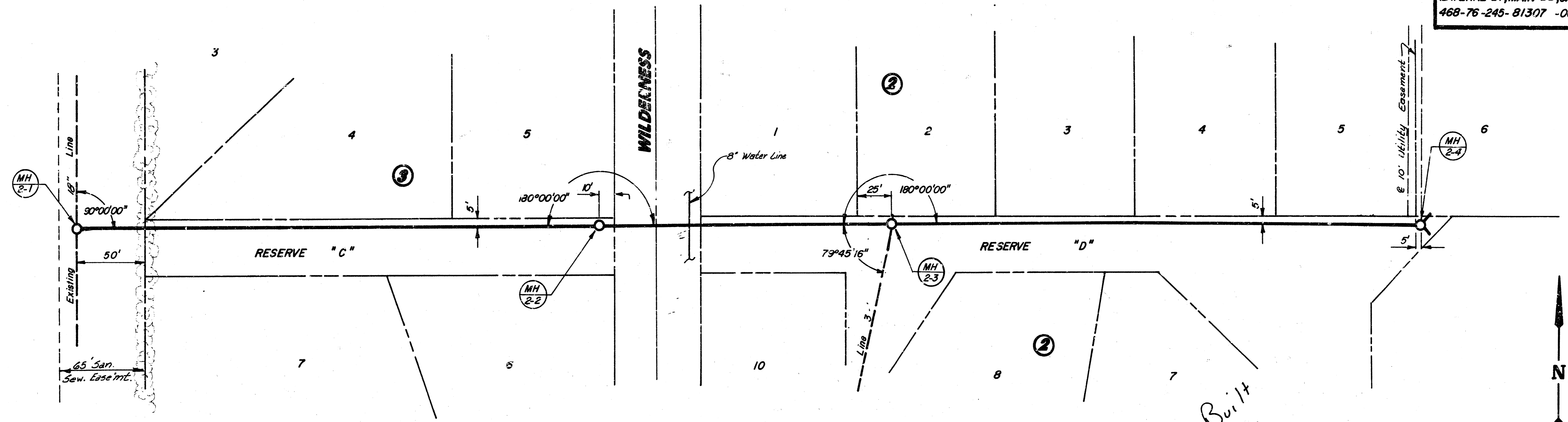
Scale: 1" = 40' Horiz.
 1" = 5' Vert.



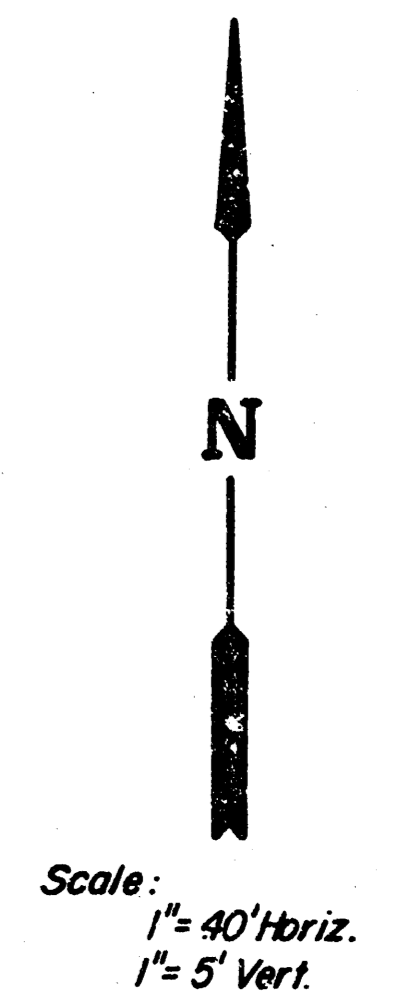
PLAN LINE 1
PROFILE LINE 1



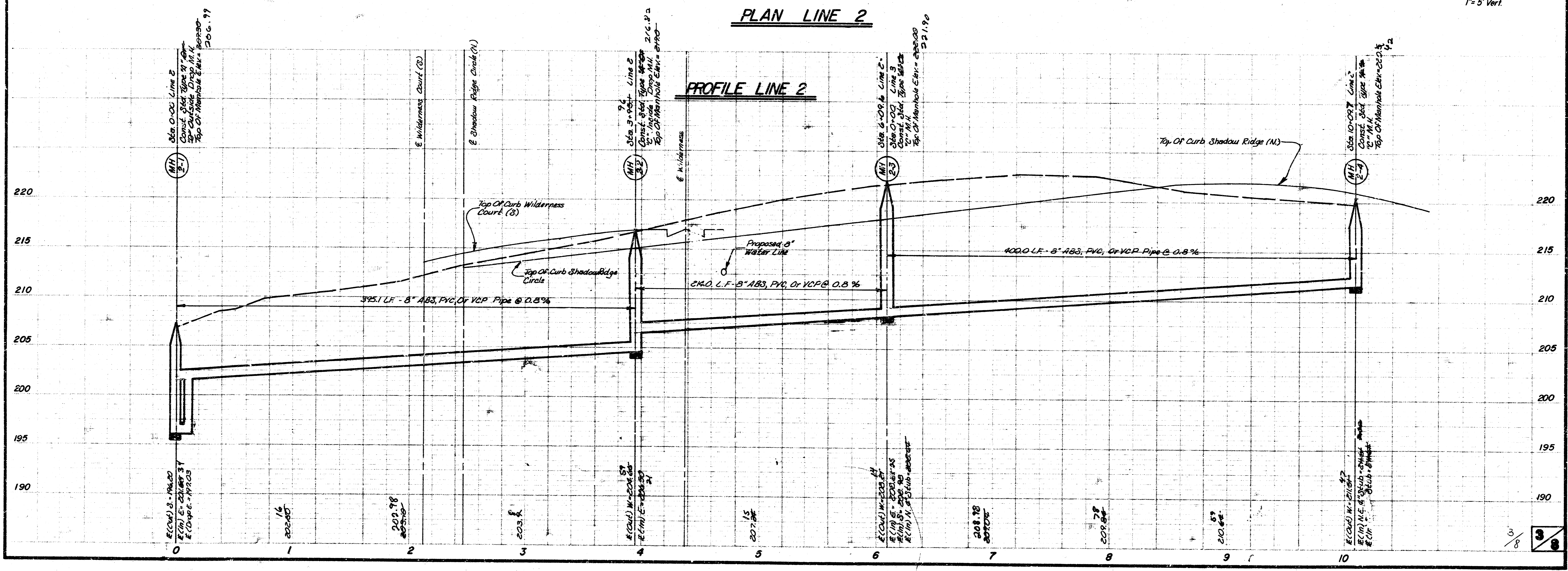
WILDERNESS ADDITION WAR IND. SEW.
 LATERAL 27, MAIN 22, SAN. SEW. NO.
 468-76-245-81307 -000-000-001



As Built
 J.L.L.
 3-84

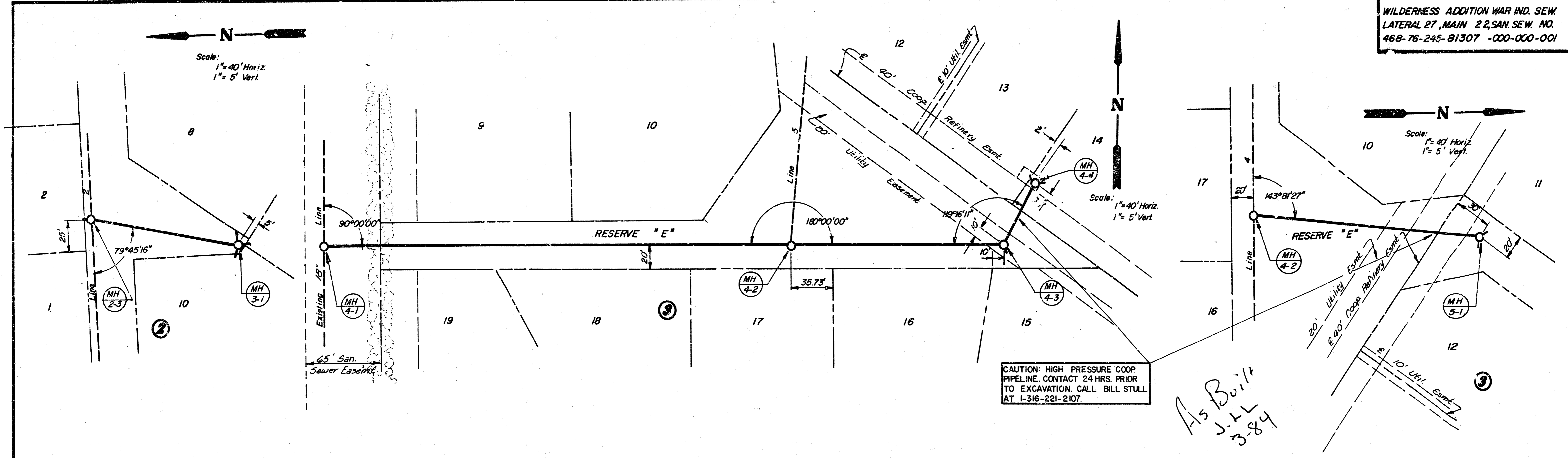


PLAN LINE 2



PROFILE LINE 2

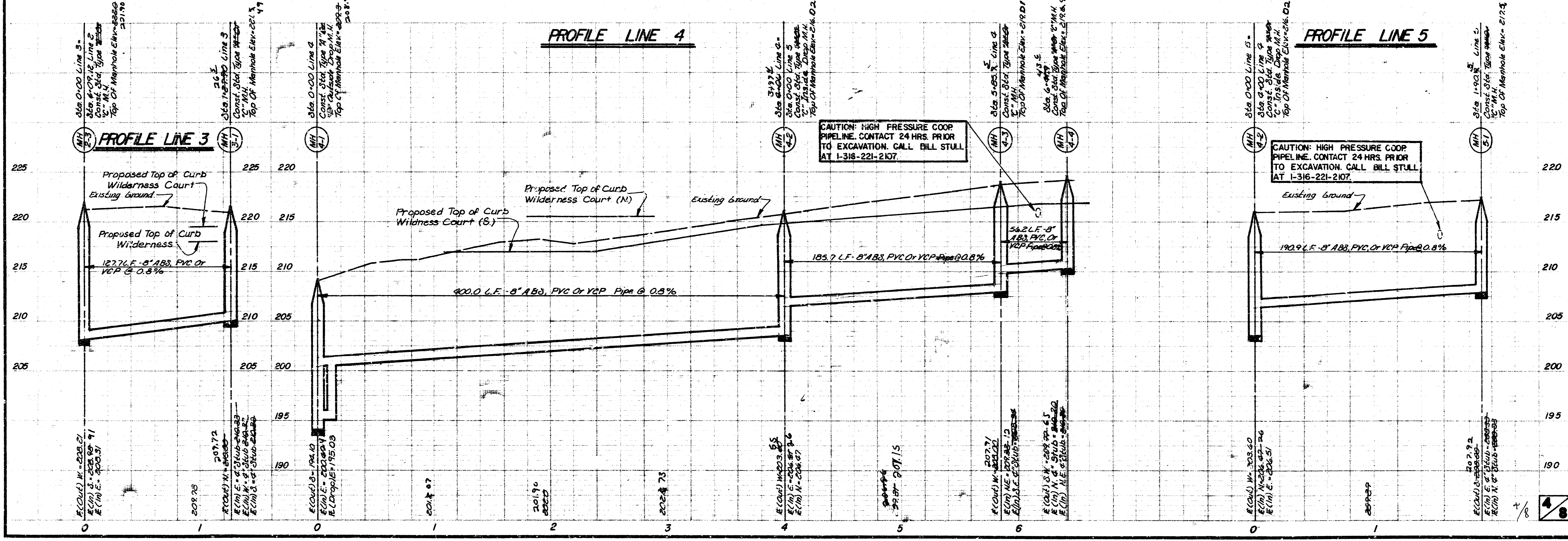
WILDERNESS ADDITION WAR IND. SEW
 LATERAL 27, MAIN 22, SAN. SEW. NO.
 468-76-245-81307 -000-000-001



PLAN LINE 3

PLAN LINE 4

PLAN LINE 5



PROFILE LINE 3

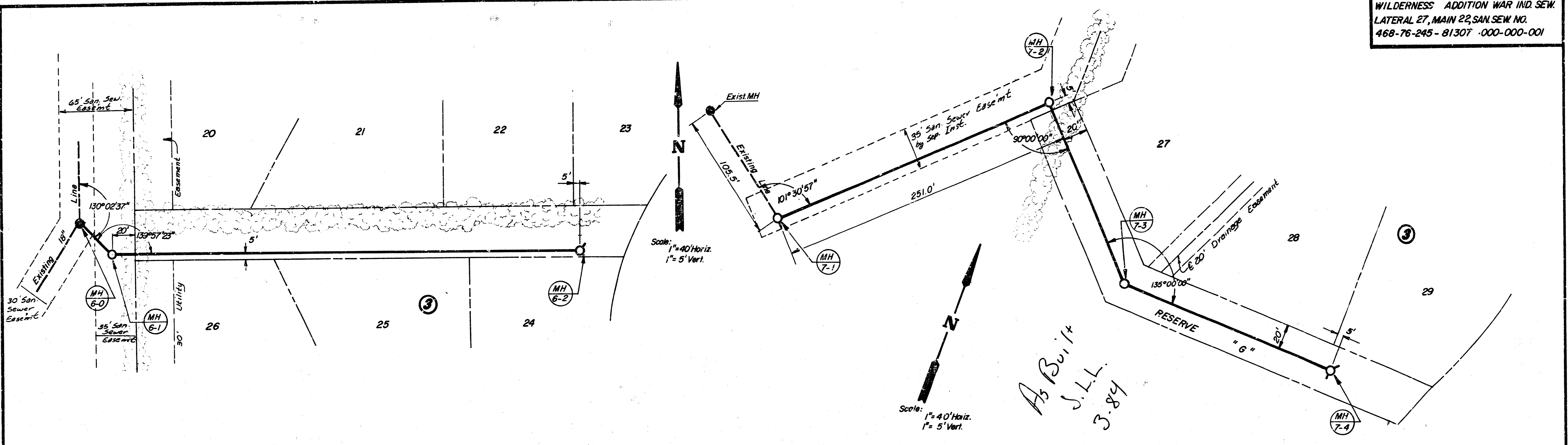
PROFILE LINE 4

PROFILE LINE 5

CAUTION: HIGH PRESSURE COOP
 PIPELINE. CONTACT 24 HRS. PRIOR
 TO EXCAVATION. CALL BILL STULL
 AT 1-316-221-2107.

CAUTION: HIGH PRESSURE COOP
 PIPELINE. CONTACT 24 HRS. PRIOR
 TO EXCAVATION. CALL BILL STULL
 AT 1-316-221-2107.

WILDERNESS ADDITION WAR IND. SEW.
 LATERAL 27, MAIN 22, SAN. SEW. NO.
 468-76-245 - 81307 - 000-000-001

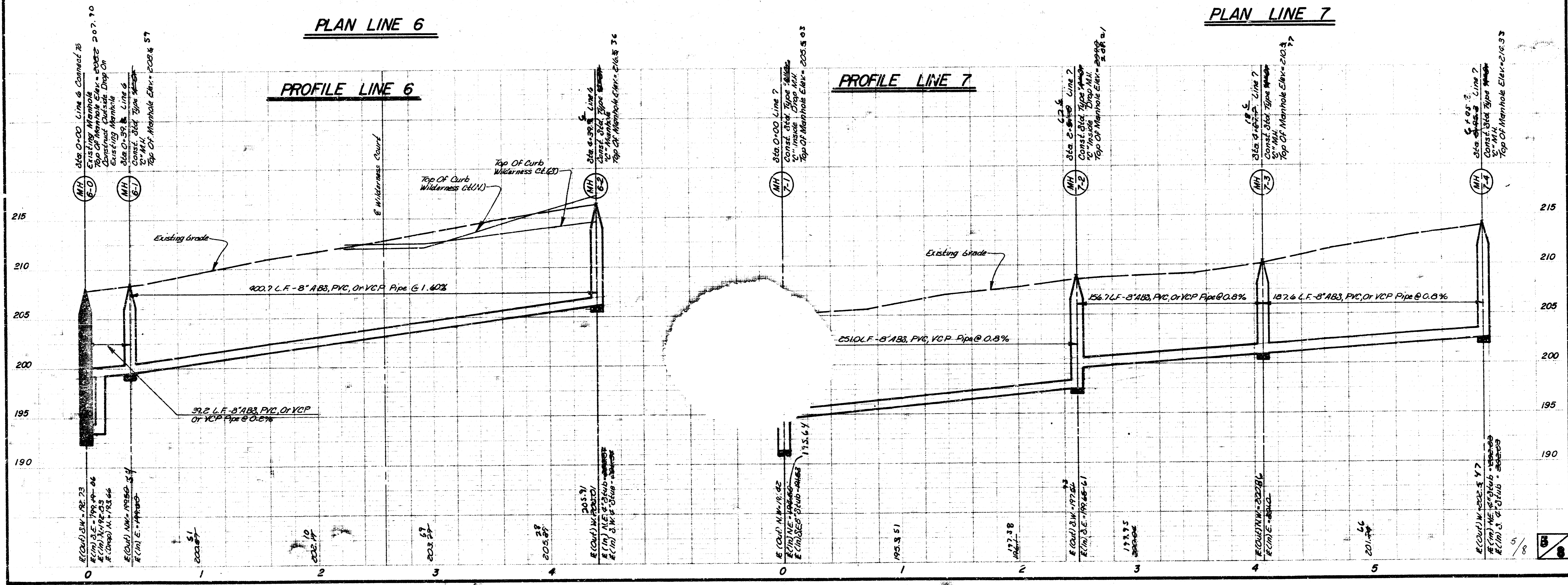


PLAN LINE 6

PLAN LINE 7

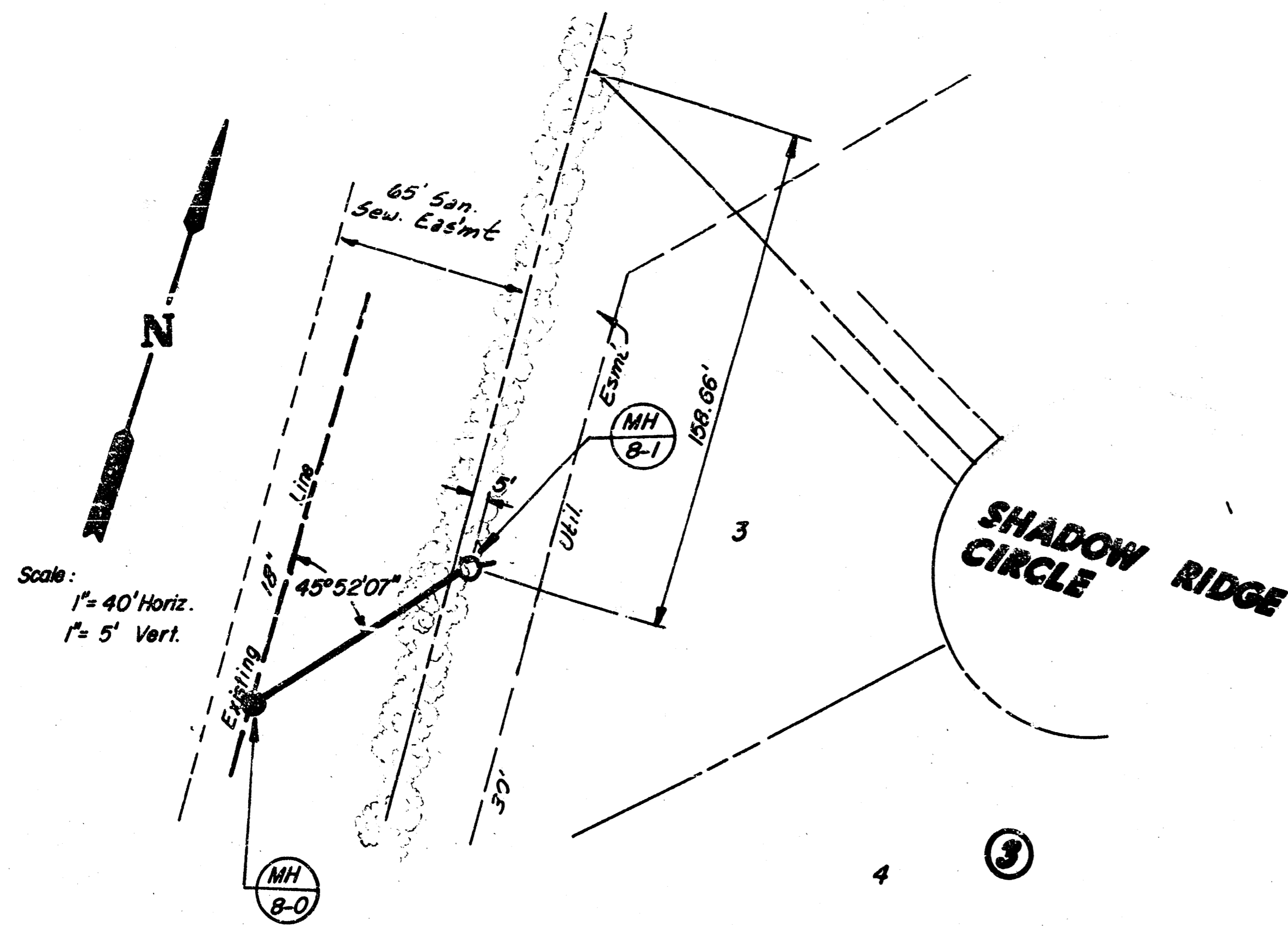
PROFILE LINE 6

PROFILE LINE 7

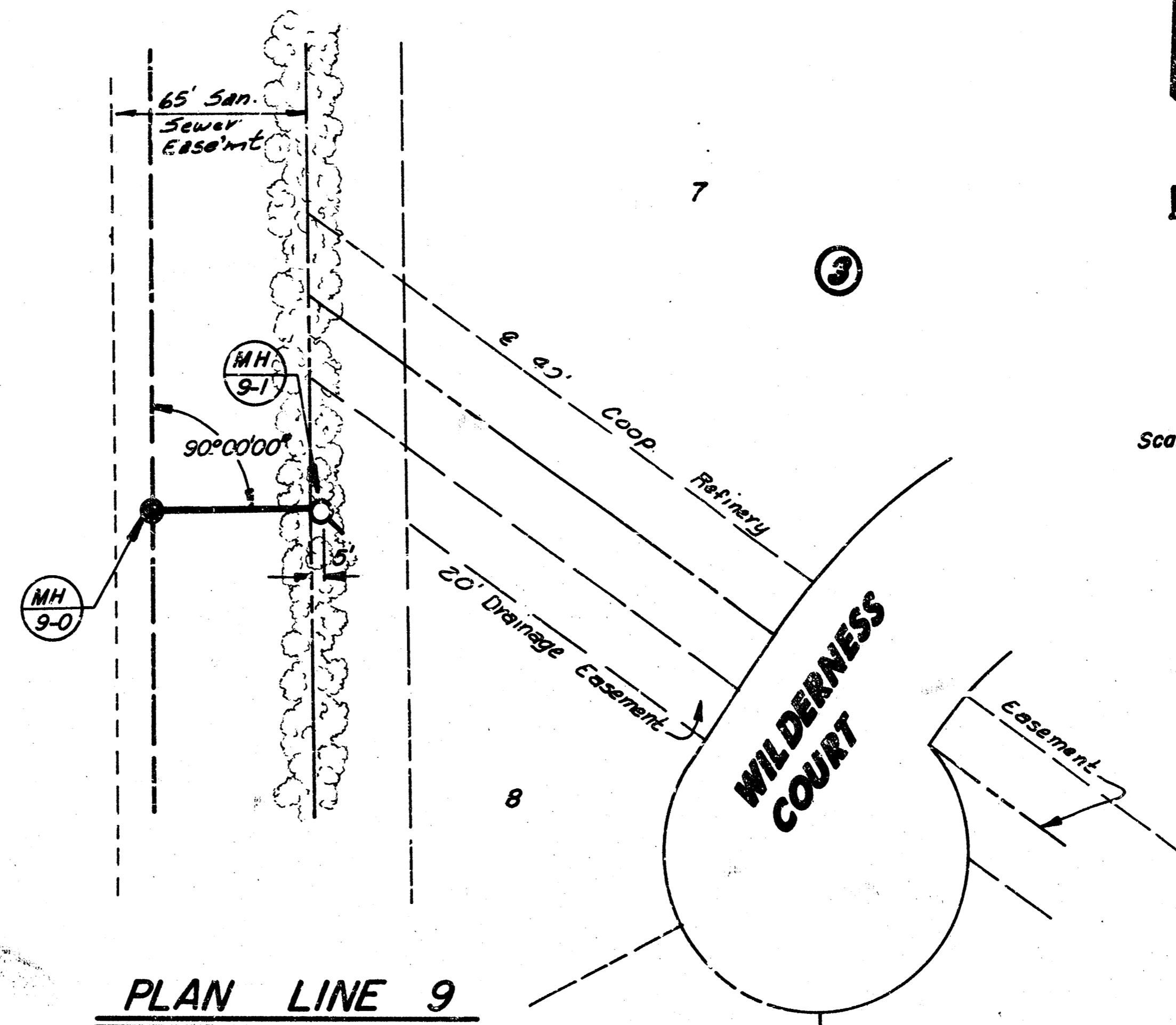


*As Built
 J.L.L.
 3.84*

WILDERNESS ADDITION WAR IND. SEW.
 LATERAL 27, MAIN 22, SAN. SEW. NO.
 469-76-245-81307 -000-000-001

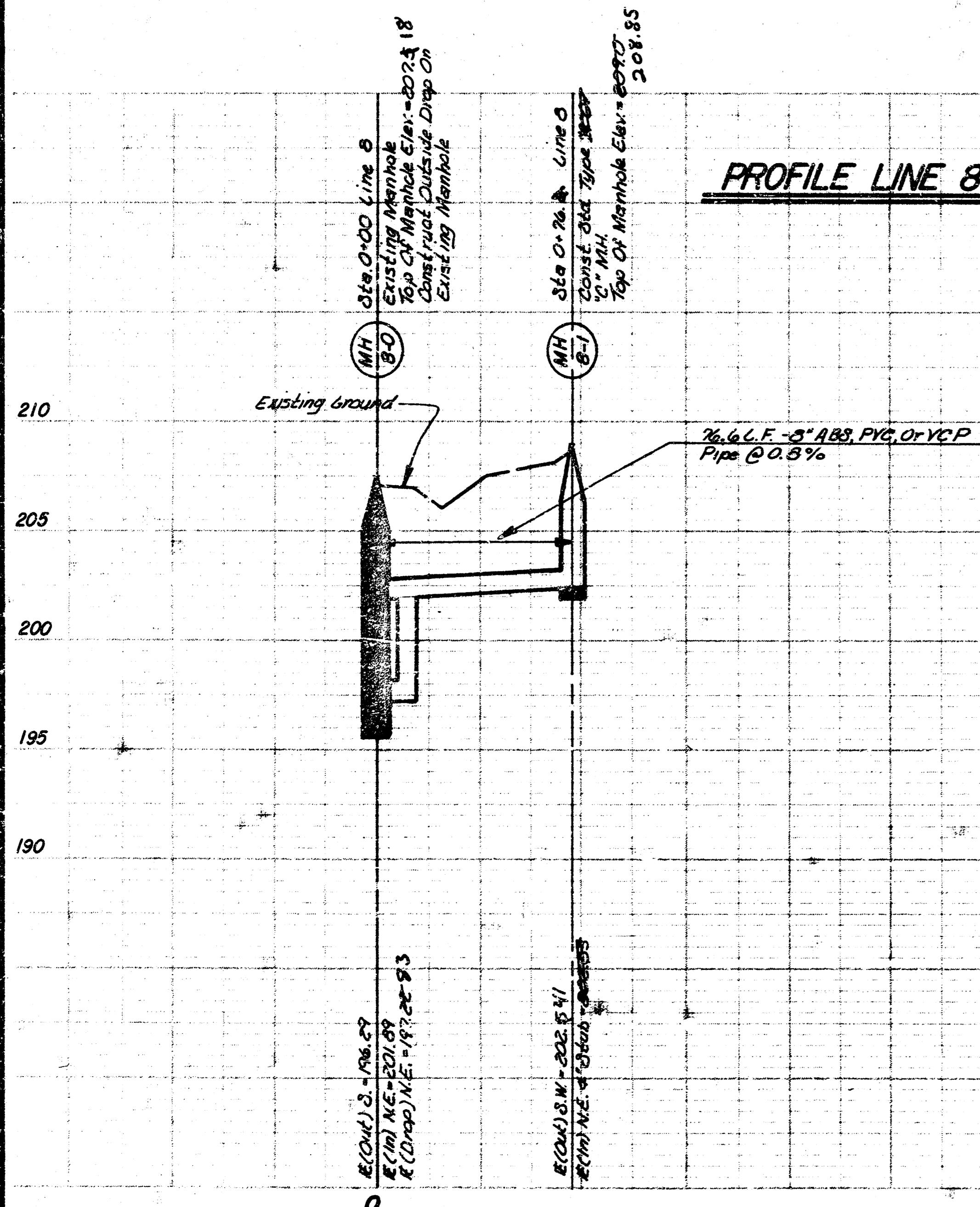


PLAN LINE 8

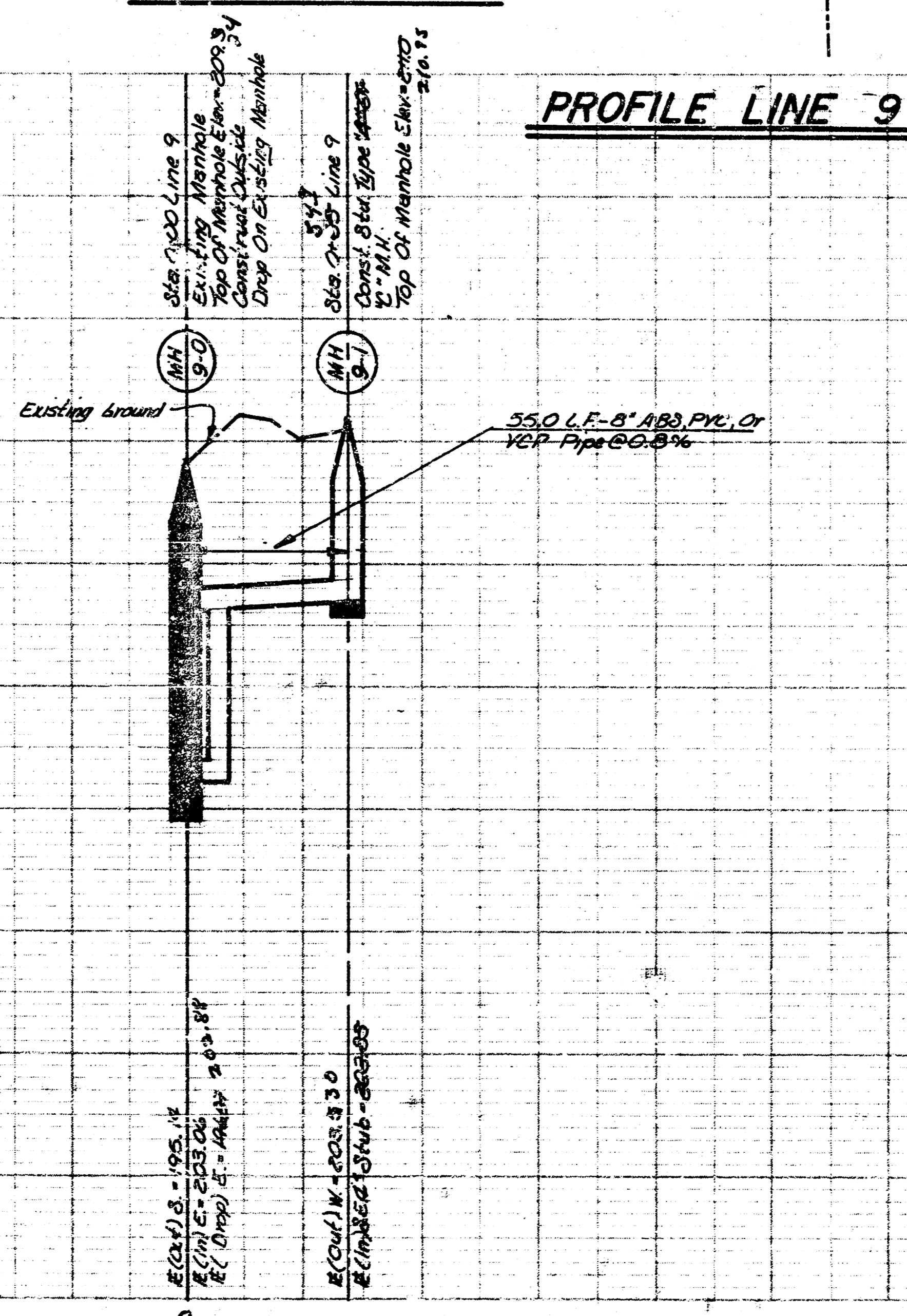


PLAN LINE 9

*As Bui 14
 J.L.L.
 3-84*



PROFILE LINE 8



PROFILE LINE 9

SEWER APPURTENANCES DETAILS

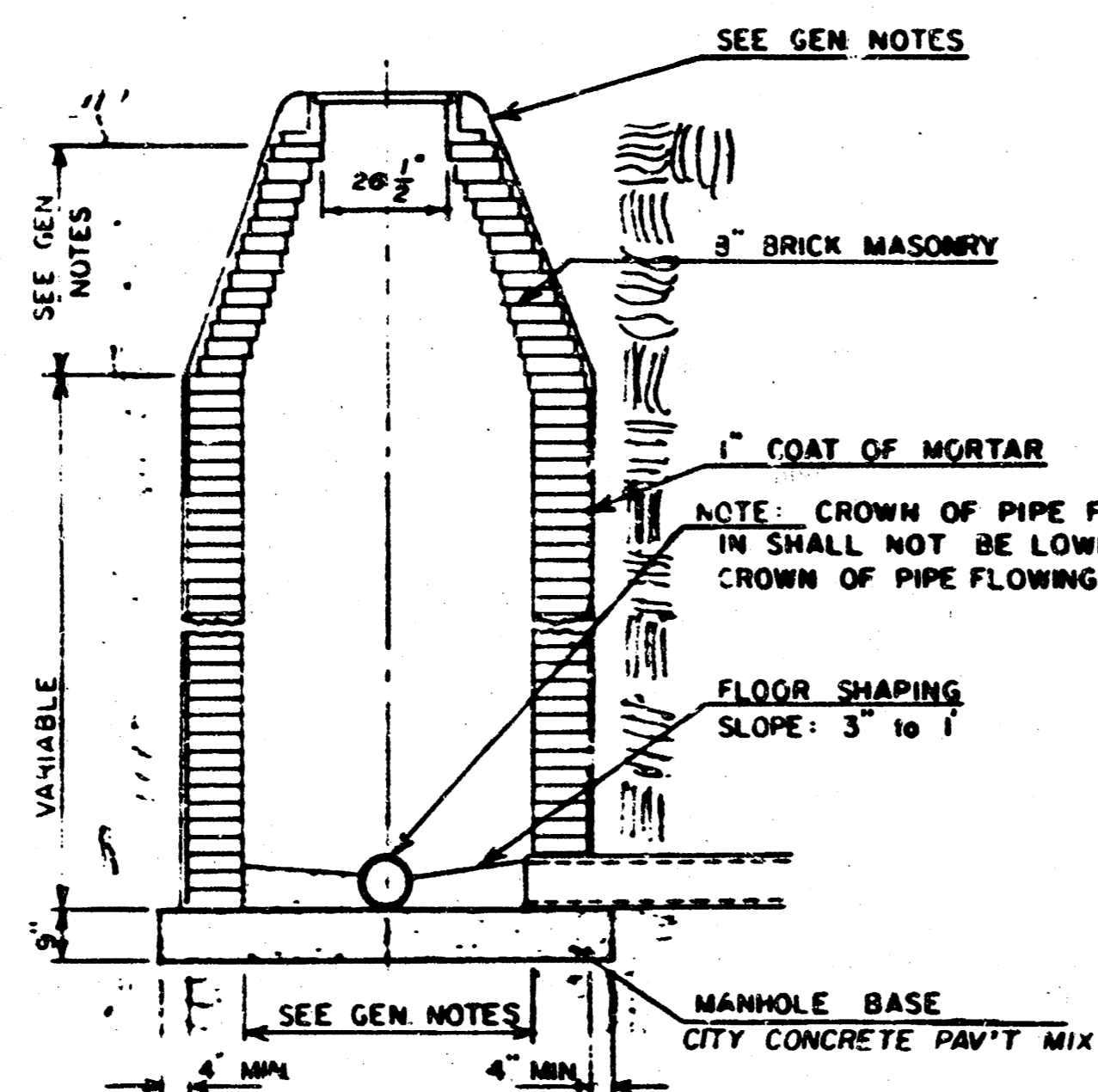
REVISED SEPTEMBER 1980
REVISED DECEMBER 1981

ADOPTED AS STANDARD DESIGN
BY

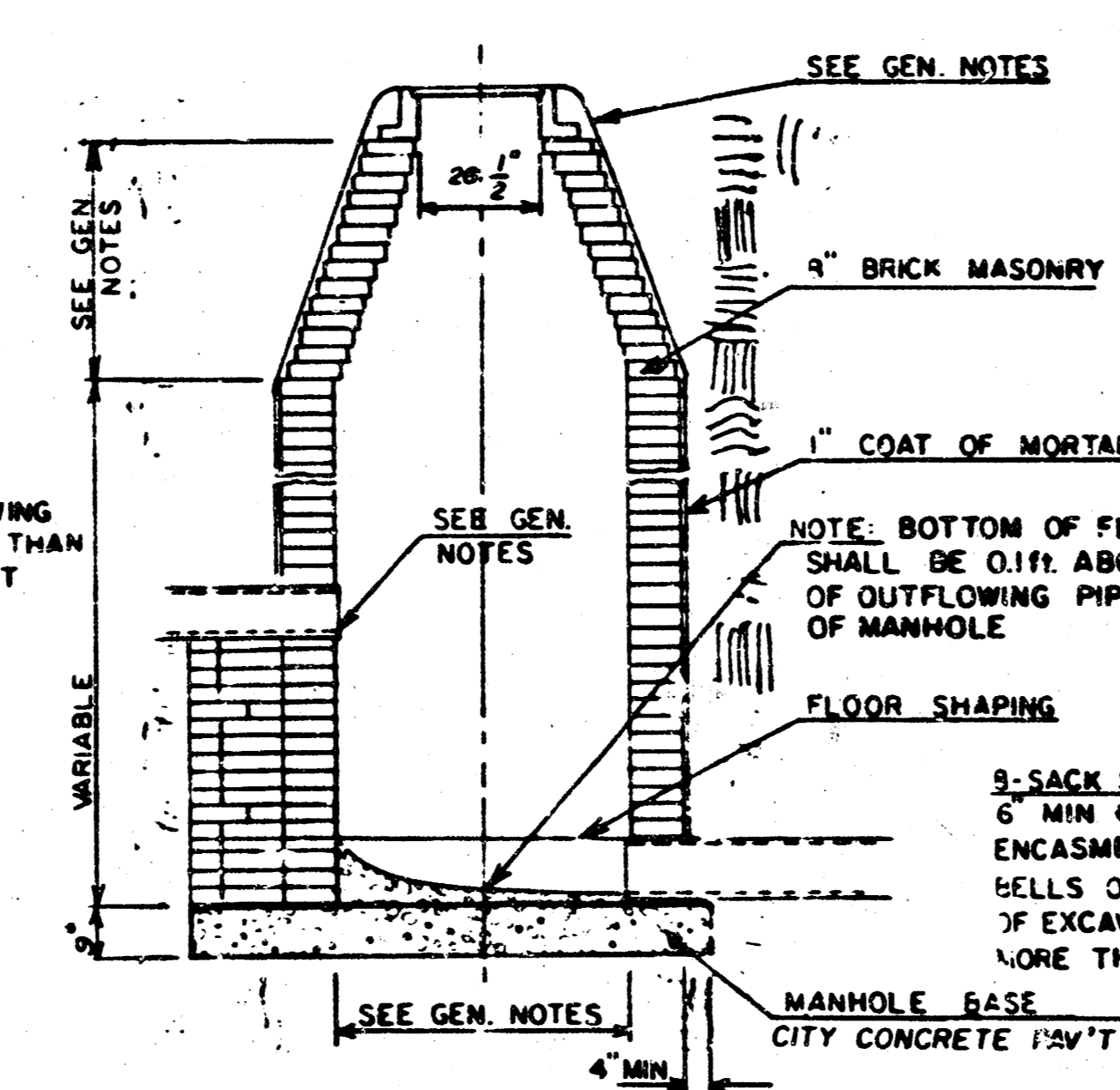
CITY of WICHITA, KANSAS

Manhole Number	North Coordinate	East Coordinate
1-1	2422.2810	5902.5756
1-2	2428.1003	6277.5323
1-3	2433.5938	6631.4891
1-4	2438.9493	6976.5581
2-1	2089.3193	5907.6237
2-2	2095.4509	6302.6961
2-3	2098.7717	6516.6703
2-4	2104.9790	6916.6221
3-1	1972.7951	6495.9132
4-1	1504.3744	5916.4922
4-2	1510.4382	6316.4463
4-3	1513.2533	6502.1550
4-4	1562.6527	6528.8660
5-1	1700.1339	6338.2135
6-0	1116.6310	5922.3709
6-1	1091.8766	5952.7497
6-2	1097.9515	6353.4337
7-1	659.6140	5784.1353
7-2	839.7542	5958.8948
7-3	730.6331	6071.3757
7-4	733.4770	6258.9484
8-0	2165.3105	5906.4716
8-1	2219.4953	5960.6564
9-0	1815.4507	5911.7759
9-1	1816.3042	5966.7693

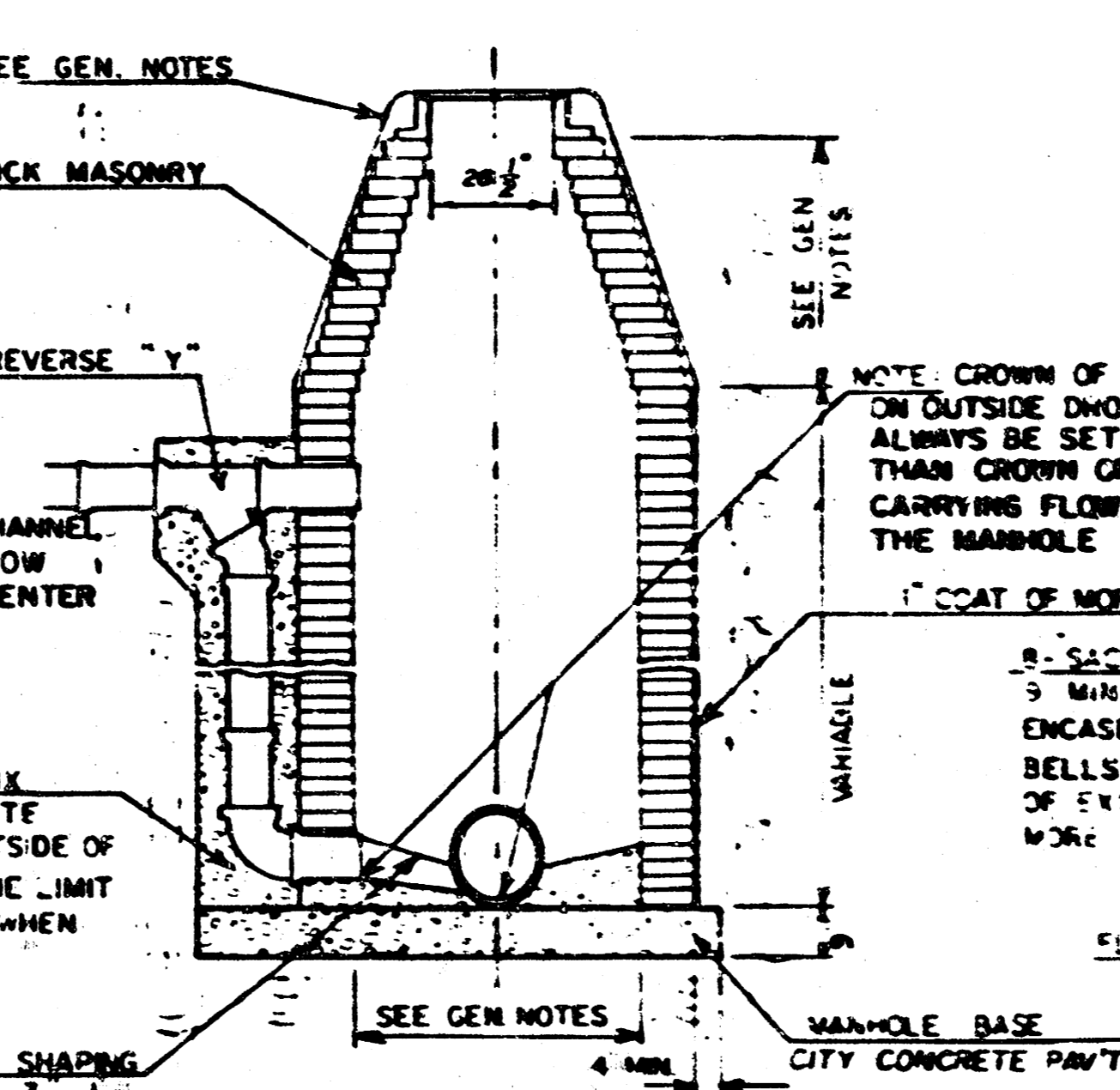
TYPE "A" MANHOLE



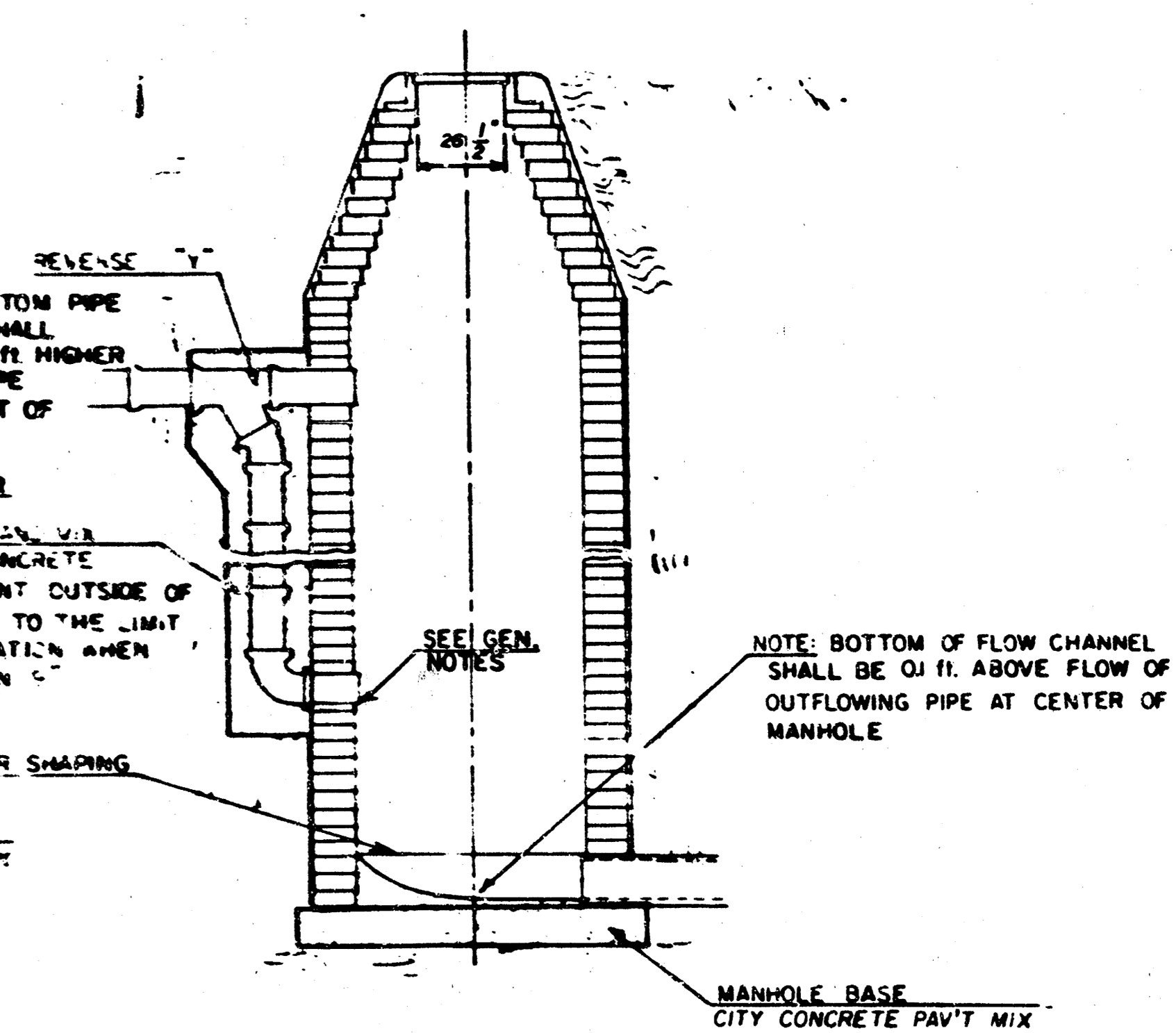
TYPE "A" INSIDE DROP MANHOLE



TYPE "A" OUTSIDE DROP MANHOLE



DETAIL OF OUTSIDE DROP
CONSTRUCTED ON EXISTING MANHOLE



GENERAL NOTES

- MORTAR USED IN MASONRY CONSTRUCTION SHALL CONTAIN 8 SACKS OF CEMENT PER CUBIC YARD. CONCRETE USED IN MANHOLE BASES SHALL CONFORM TO THE REQUIREMENTS OF CONCRETE FOR CONCRETE PAVEMENT CONSTRUCTION AS SPECIFIED IN THE CITY STANDARD PAVING SPECIFICATIONS USING CITY CONCRETE PAVEMENT MIX WITHOUT AIR ENTRAINING ADMIXTURE. MORTAR SHALL BE PLACED AROUND THE MANHOLE RING AS SHOWN ON THE DRAWINGS WHEN MANHOLES ARE CONSTRUCTED IN UNPAVED AREAS. TYPE "A" MANHOLES CAN BE USED ON SEWERS UP TO 16" IN DEPTH WHEN THE MANHOLE IS NOT LOCATED WITHIN PUBLIC STREET PAVEMENT. MANHOLES CONSTRUCTED WHERE PIPE SIZES ARE SMALLER THAN 24" SHALL HAVE AN INSIDE DIAMETER OF 4'. MANHOLES CONSTRUCTED WHERE PIPE SIZES ARE 24" OR LARGER SHALL HAVE AN INSIDE DIAMETER OF 5'. THE HEIGHT OF THE CORBELS ON 4' DIAMETER MANHOLES SHALL BE 4'. MANHOLES HAVING A DIAMETER OF 5' SHALL HAVE CORBELS 6' IN HEIGHT. COMPLETED MANHOLE SHALL BE WITHOUT LEAKS AND WATER TIGHT.
- REINFORCING STEEL SHALL BE INSTALLED IN THE MANHOLE BASES AND SHALL CONSIST OF NO. 4 BARS PLACED 6" CENTERS IN BOTH DIRECTIONS. THE MANHOLE BASE REINFORCEMENT SHALL BE PLACED 6" ABOVE THE BOTTOM OF THE MANHOLE BASE. ALL COSTS FOR FURNISHING AND INSTALLING REINFORCING STEEL SHALL BE INCLUDED IN THE UNIT PRICE BID FOR THE MANHOLE.
- OPENINGS SHALL BE CUT INTO THE MANHOLE WALL WHEN OUTSIDE DROPS ARE CONSTRUCTED ON EXISTING MANHOLES. SUCH OPENINGS CUT INTO EXISTING MANHOLES SHALL BE AS SMALL AS PRACTICAL TO FACILITATE INSTALLING AND GROUTING THE NEW PIPE IN PLACE. WATERSTOP GASKETS SHALL BE USED WITH P.V.C. AND A.B.S. COMPOSITE PIPE. THE NEW PIPE SHALL BE GROUTED INTO THE OPENING USING AN APPROVED NONSHRINK GROUT FOR THE FULL MANHOLE WALL THICKNESS. THE EXTENSION OF THE COMPLETED CONNECTION SHALL BE SEALED WITH AN APPROVED BITUMINOUS COATING SUCH THAT THE CONNECTION WILL BE WATER TIGHT. FLOOR OF MANHOLE SHALL BE MODIFIED TO FORM NEW FLOW CHANNEL FOR THE NEW CONNECTION AS INDICATED BY THE DRAWING. THE VERTICAL DROP FROM THE LOWER PIPE ON SUCH OUTSIDE DROP CONNECTIONS SHALL NOT EXCEED 4' FOR INFLOWING PIPES SIZED 12" OR SMALLER AND 2' FOR INFLOWING PIPES SIZED LARGER THAN 12". EXCEPT THE CROWN OF THE LOWER PIPE SHALL NEVER BE SET BELOW THE CROWN OF ANY LARGER OUTFLOWING PIPE. THIS WORK, INCLUDING MODIFICATION OF MANHOLE FLOOR, SHALL BE PAID FOR AT THE UNIT PRICE BID FOR OUTSIDE DROP STACK CONSTRUCTED ON EXISTING MANHOLE.
- THE FLOORS OF ALL MANHOLES SHALL BE SHAPED WITH FLOW CHANNELS SUCH THAT THE MANHOLES WILL BE SELF-CLEANING AND FREE OF AREAS WHERE SOLUTION COULD BE DEPOSITED AS SEWAGE FLOWS THROUGH THE MANHOLE FROM ALL INLET PIPES TO THE OUTLET PIPE. FLOW CHANNELS SHALL BE FORMED TO MATCH THE BOTTOM HALVES OF THE INFLOWING PIPES AND THE OUTFLOWING PIPE AS SHOWN BY THE DRAWING EXCEPT FOR INSIDE DROP MANHOLES. FLOW CHANNELS FOR INSIDE DROP MANHOLES SHALL BE CONSTRUCTED AS INDICATED BY THE DRAWING. MANHOLE FLOORS SHALL HAVE SLOPES OF 3 INCHES PER FOOT IN THE AREAS OUTSIDE OF THE FLOW CHANNELS SLOPED TOWARD THE FLOW CHANNELS. PIPES LAID THROUGH MANHOLES SHALL HAVE THE TOP HALF REMOVED TO NEAT LINES FOR THE FULL INSIDE DIAMETER OF THE MANHOLE. MANHOLE FLOORS SHALL THEN BE SHAPED AROUND THE BOTTOM HALF OF THE PIPE WHICH FORMS THE FLOW CHANNEL.
- PIPES INSTALLED WITHIN THE EXCAVATION MADE FOR THE MANHOLE SHALL BE CRADLED WITH CONCRETE TO THE LIMITS OF THE MANHOLE EXCAVATION. WHEN CLAY PIPE IS USED, THE CRADLE SHALL EXTEND TO THE FIRST JOINT OUTSIDE THE MANHOLE. THE CRADLE SHALL BE TERMINATED AT THE CLAY PIPE JOINT IN A MANNER WHICH WILL MAINTAIN THE FLEXIBILITY OF THE JOINT. COST OF THE CRADLE WITHIN MANHOLE EXCAVATION OR TO CLAY PIPE JOINTS ADJACENT TO MANHOLE SHALL BE INCLUDED IN THE UNIT PRICE BID FOR THE MANHOLE.
- MANHOLE COVER CASTINGS AND MANHOLE FRAME CASTINGS SHALL CONFORM TO THE REQUIREMENTS AS INDICATED IN THE STANDARD SPECIFICATIONS AND AS SHOWN IN THE STANDARD DETAIL DRAWING.
- THE VERTICAL DROP IN INSIDE DROP MANHOLES SHALL NOT EXCEED 4' FOR INFLOWING PIPES SIZED 12" OR SMALLER AND 2' FOR INFLOWING PIPES LARGER THAN 12". THE CROWNS OF INFLOWING PIPES SHALL NEVER BE SET LOWER THAN THE CROWN OF THE OUTFLOWING PIPE.
- STANDARD MANHOLES TYPE "A" AND STANDARD INSIDE DROP MANHOLES TYPE "A" SHALL BE BID AS STANDARD MANHOLES FOR THE TYPE AND DIAMETER INDICATED. OUTSIDE DROP MANHOLES TYPE "A" SHALL BE BID AS STANDARD OUTSIDE DROP MANHOLES FOR THE TYPE AND DIAMETER INDICATED. ALL MANHOLE DIAMETERS WILL BE 4' UNLESS INDICATED OTHERWISE.

S-2-4-33

FINAL PLAT OF WILDERNESS

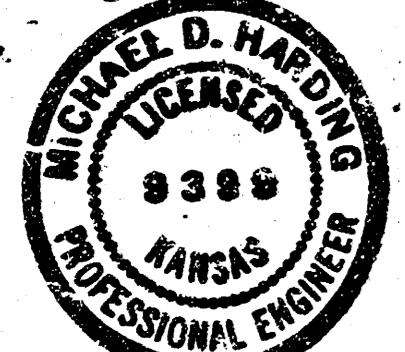
AN ADDITION TO WICHITA, SEDGWICK COUNTY, KANSAS

I, Michael D. Harding, a Civil Engineer in Kansas, do hereby certify that I have been in responsible charge of surveying and platting of "Wilderness", an addition to Wichita, Sedgwick County, Kansas, into lots, blocks, and reserves, the same being accurately set forth in the accompanying plat and described as follows:

A tract of land in the north half of Section 5, Township 27 south, Range 2 east of the 6th P.M., Sedgwick County, Kansas described as:

Beginning at the intersection of the south right-of-way line of 29th Street North and the west line of said northeast quarter; thence easterly along the south line of 29th Street North bearing N 89° 06' 39" E, 1278.11 feet; thence S 44° 05' 39" W, 257.28 feet to a point on a curve to the right with a central angle of 45° 00' 00", a radius of 109.00 feet, a length of 85.61 feet and a long chord of 85.43 feet bearing S 22° 25' 21" E; thence S 0° 53' 21" E, 99.00 feet; thence S 89° 06' 39" W, 143.82 feet; thence S 44° 06' 39" W, 87.93 feet; thence S 0° 53' 21" E, 126.72 feet; thence S 79° 19' 10" W, 183.57 feet to a point on a curve to the right with a central angle of 126° 05' 05", a radius of 50.00 feet, a length of 110.00 feet and a long chord of 85.12 feet bearing S 52° 20' 42" W; thence S 34° 34' 38" W, 80.00 feet; thence S 35° 23' 22" E, 43.86 feet to a point on a curve to the right with a central angle of 94° 53' 15", a radius of 262.88 feet, a length of 433.83 feet and a long chord of 384.23 feet bearing S 9° 08' 44" E; thence S 39° 07' 53" W, 304.68 feet to a point on a curve to the left with a central angle of 40° 30' 00", a radius of 174.06 feet, a length of 121.52 feet and a long chord of 119.06 feet bearing S 19° 07' 53" W; thence S 0° 52' 07" E, 110.51 feet to a point on a curve to the right with a central angle of 22° 30' 00", a radius of 308.50 feet, a length of 121.15 feet and a long chord of 120.37 feet bearing S 10° 22' 53" W; thence S 21° 37' 53" W, 70.17 feet; thence S 89° 07' 53" W, 334.55 feet; thence N 45° 52' 07" W, 160.00 feet; thence N 44° 07' 53" E, 40.00 feet to a point on the west line of the northeast quarter of said Section 5; thence N 0° 52' 07" W, 160.00 feet to the point of beginning, containing 30.26 acres more or less. The drainage easement recorded on film 548, Page 729 is being vacated and replatted by virtue of K.S.A. 12-512(b).

I hereby certify that the details of this plat are correct to the best of my knowledge and belief this 25th day of July, 1983.



Michael D. Harding
Michael D. Harding, P.E.
Mid-Kansas Engineering Consultants, P.A.
240 North Rock Road, Suite 130
Wichita, Kansas 67206

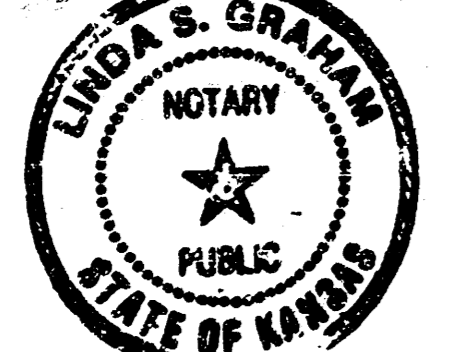
Know all men by these presents that the undersigned property owners of the land as above set forth in the Engineer's Certificate, have caused the same to be surveyed and platted into lots, blocks, streets and reserves, the same to be known as "Wilderness", an addition to Wichita, Sedgwick County, Kansas. The streets are hereby dedicated to and for the use of the public. Easements are hereby granted as indicated for the construction and maintenance of all public utilities and drainage. Reserves are platted for construction and maintenance of utilities, drainage, cart paths, recreation, buffer zones and open space and shall be owned and maintained by the Homeowners Association. The building setbacks shall be in accordance with the Tallgrass Community Unit Plan (D.P. - 96) on file in the City of Wichita, Sedgwick County Metropolitan Area Planning Department Office.

Tallgrass Company, a partnership
By: *W.F. Binter*
W.F. BINTER, Partner



STATE OF KANSAS
COUNTY OF SEDGWICK
Do it remembered that on this 16th day of July, 1983, before me, a Notary Public in and for said State and County, came *W.F. Binter*, on behalf of Tallgrass Company, a Partnership, to me personally known to be the same person who executed the foregoing instrument of writing and duly acknowledged the execution of the same. In testimony whereof I have hereunto set my hand and affixed my notarial seal the day and year above written.

Linda S. Graham
Linda S. Graham
Notary Public



This plat approved and all dedications shown hereon, if any, accepted by the Board of County Commissioners of Sedgwick County, Kansas, this 11 day of August, 1983.

Jack Seibert Chairman
Donald H. Gragg Commissioner
Don Scott Commissioner
Attest: *Dorothy E. White* County Clerk
Dorothy E. White

Entered on transfer record this 11 day of August, 1983.

STATE OF KANSAS
COUNTY OF SEDGWICK
This is to certify that this instrument was filed for record in the Register of Deeds Office at 1:00 PM on the 12th day of August, 1983.

Dorothy E. White County Clerk
Dorothy E. White

STATE OF KANSAS
COUNTY OF SEDGWICK
This is to certify that this instrument was filed for record in the Register of Deeds Office at 1:00 PM on the 12th day of August, 1983.

Bette F. McCart Register of Deeds
Ed Resa Deputy
646737
65 San Sewer Easement Recorded by Two Separate Instruments

This plat of "Wilderness" has been submitted to and approved by the Wichita-Sedgwick County Metropolitan Area Planning Commission, Wichita, Kansas.
Dated this 16th day of June, 1983.

Wichita-Sedgwick County Metropolitan Area Planning Commission
David Bayou Chairman
Robert A. Lakin Secretary

This plat approved and all dedications shown hereon, if any, accepted by the City Commission of the City of Wichita, Kansas this 2nd day of July, 1983.

Robert G. Knight Mayor
Dona M. Cline City Clerk

