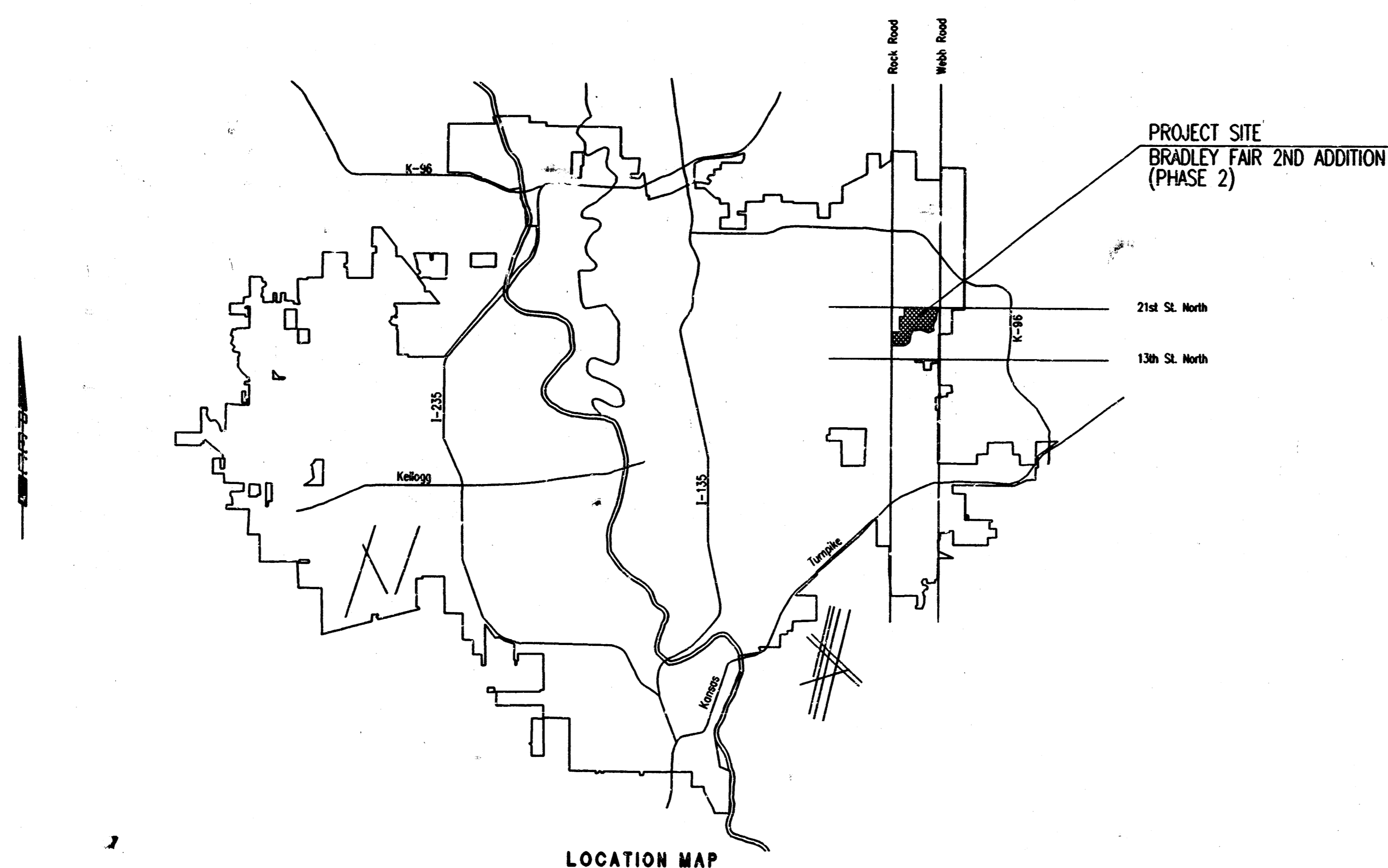


CONSTRUCTION PLANS FOR
LATERAL NO. 69, MAIN NO. 22
 OF THE
WAR INDUSTRIES SEWER

82601

IN
THE CITY OF WICHITA,
 SEDGWICK COUNTY, KANSAS
 MICHAEL E. LINDEBAK, P.E. - CITY ENGINEER



INDEX OF SHEETS

SHEET NO. 1	TITLE SHEET
SHEET NO. 2	KEY MAP AND GENERAL NOTES
SHEET NO. 3	CONSTRUCTION SEQUENCE AND PIPE ABANDONMENT PLAN
SHEET NO. 4	PLAT
SHEET NO. 5-6	PLAN/PROFILE
SHEET NO. 7	TYPE "P" MANHOLE
SHEET NO. 8	FRAME AND COVER DETAILS
SHEET NO. 9	RISER DETAILS

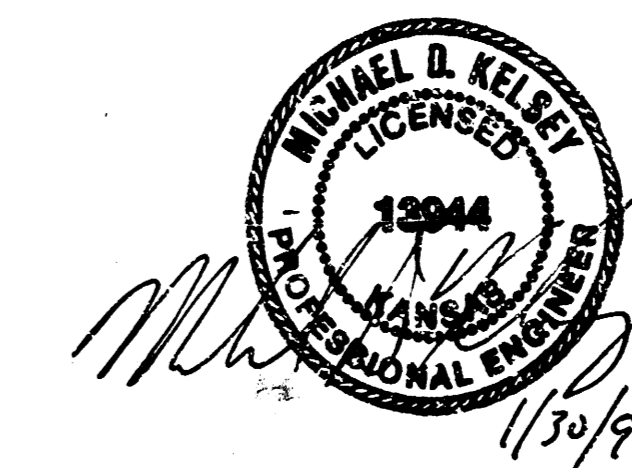
LOCATION MAP

INDEX CODE 743005

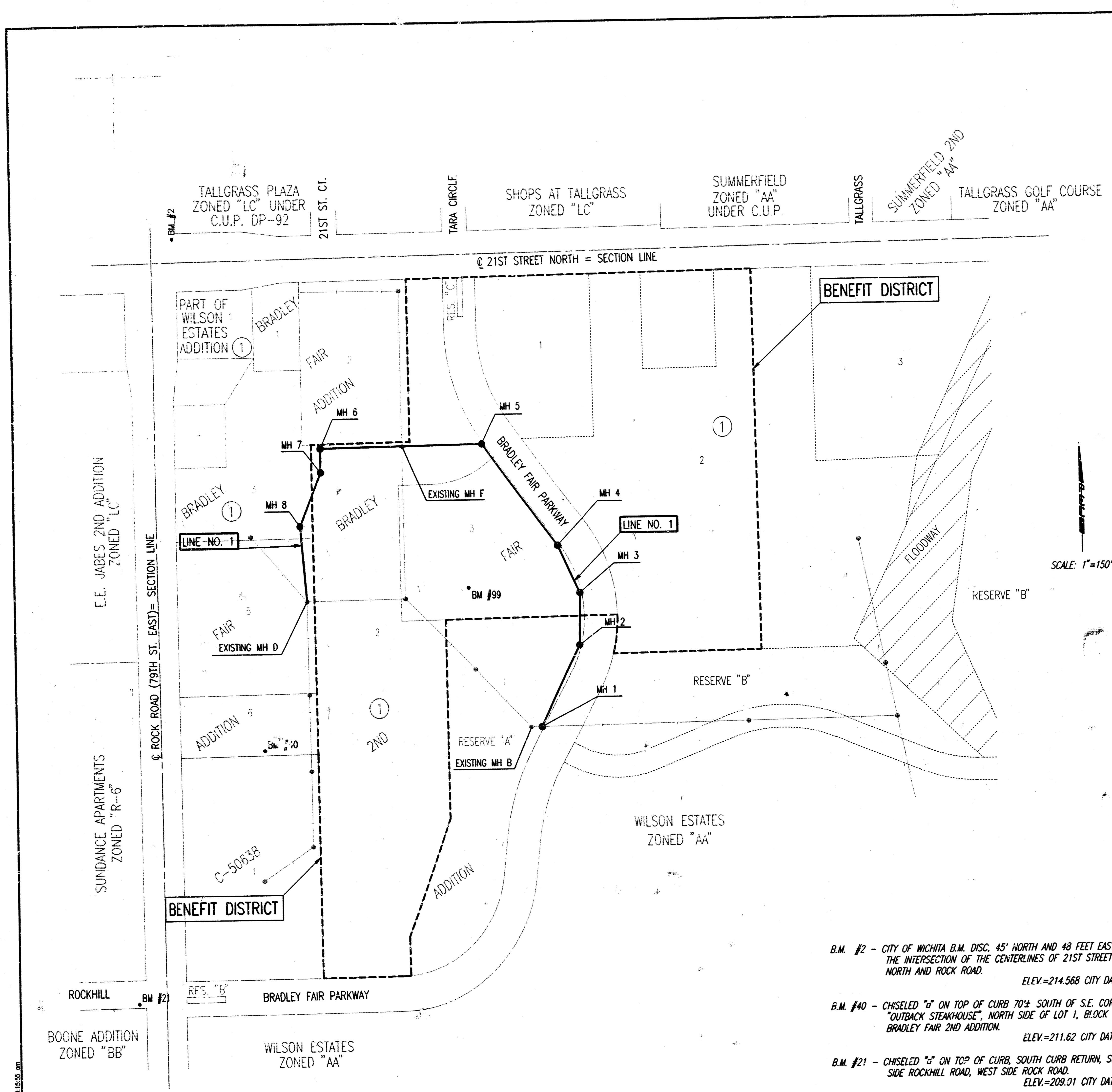
CITY OF WICHITA PROJECT NO. 468-76-245-82601-000-000-001

FEBRUARY 1997

PLANS PREPARED BY
PROFESSIONAL ENGINEERING CONSULTANTS, P.A.
 ENGINEERS
 WICHITA, KANSAS



DSNR: RFJ OPER: ILS SCALE: 1"=1.00
 0A:1996\96828\000\SSITILE.DWG 01-29-1997 2:39:53 pm



- GENERAL NOTES
- ALL CONSTRUCTION AND MATERIALS TO COMPLY WITH CITY OF WICHITA SPECIFICATIONS AND STANDARDS.
 - ALL ELEVATIONS SHOWN ARE BASED ON CITY OF WICHITA DATUM.
 - THE CONTRACTOR SHALL LIMIT THE EXTENT OF TRENCH TO REMAIN OPEN OVERNIGHT AND WEEKENDS TO LESS THAN 50 FEET.
 - AT LEAST 72 HOURS PRIOR TO BEGINNING EXCAVATION (EXCLUDING WEEKENDS AND HOLIDAYS), THE CONTRACTOR SHALL CONTACT THE KANSAS ONE-CALL SYSTEM, A UTILITY LOCATION SERVICE, AT (316) 887-2470 TO REQUEST THE LOCAL UTILITY COMPANIES MARK ANY EXISTING LINES WITHIN THE PROJECT AREA.
 - UNDERGROUND UTILITY SERVICE LINES AND OVERHEAD UTILITY PILE LINES ARE TO BE ADJUSTED AS NECESSARY BY OTHERS PRIOR TO CONSTRUCTION UNLESS THE PLANS SPECIFICALLY CALL FOR THEIR ADJUSTMENT BY THE CONTRACTOR. UNLESS THE PLANS SPECIFICALLY IDENTIFY A UTILITY TO BE ADJUSTED BY ITS OWNER DURING CONSTRUCTION, EXISTING UTILITIES AND THEIR LOCATIONS, AS SHOWN ON THE PLANS, REPRESENT THE BEST INFORMATION OBTAINABLE FOR THE DESIGN. THE CONTRACTOR WILL BE REQUIRED TO WORK AROUND EXISTING UTILITIES WITHIN THE RIGHT-OF-WAY WHICH DO NOT CONFLICT WITH PROPOSED CONSTRUCTION.
 - THE CONTRACTOR SHALL BE RESPONSIBLE FOR PRESERVING PROPERTY IRONS. THE CONTRACTOR WILL BE REQUIRED TO RE-ESTABLISH ANY PROPERTY IRONS WHICH ARE DAMAGED OR DESTROYED BY HIS CONSTRUCTION OPERATIONS. SUCH IRONS SHALL BE RE-ESTABLISHED BY A LICENSED LAND SURVEYOR IN ACCORDANCE WITH STATE LAWS. ALL COSTS FOR THIS WORK SHALL BE SUBSIDIARY TO THE LUMP SUM PRICE BID FOR "SITE RESTORATION".
 - CONTRACTOR SHALL PROVIDE POSITIVE DRAINAGE AWAY FROM ALL MANHOLE COVERS.
 - MANHOLES SHALL BE CONSTRUCTED IN ACCORDANCE WITH THE STANDARD SPECIFICATIONS AND THE STANDARD DETAIL DRAWINGS.
 - ALL LAWN/TURF AREAS DISTURBED BY CONSTRUCTION OF THE PROPOSED IMPROVEMENTS SHALL BE RESTORED WITH THE SAME GRASS/SOD AS EXISTING. RESTORATION OF DISTURBED AREAS SHALL INCLUDE, BUT NOT BE LIMITED TO, TOP SOIL PREPARATION, SEEDING, MULCH, AND/OR RESEEDING. ALL SEEDING/SODDING WORK SHALL BE IN ACCORDANCE WITH THE CITY OF WICHITA STANDARD SPECIFICATIONS AND THE CITY OF WICHITA ADMINISTRATIVE REGULATION NO. AR78 WHICH GOVERNS CLEANUP AND RESTORATION OR REPLACEMENT FOLLOWING CONSTRUCTION. ALL COSTS FOR THIS WORK SHALL BE SUBSIDIARY TO THE LUMP SUM PRICE BID FOR "SITE RESTORATION".
 - RUBBLE FROM THE REMOVAL OF MISCELLANEOUS STRUCTURES INCLUDING ANY TREES REMOVED, TREE TRIMMINGS, AND EXCESS EXCAVATION WHICH IS TO BE WASTED SHALL BE DISPOSED OF ON SITES PROVIDED BY THE CONTRACTOR. THESE SITES SHALL ALSO BE APPROVED BY THE ENGINEER AS TO SUITABILITY, APPEARANCE, AND SITE LOCATION. LOCATIONS THAT, IN THE OPINION OF THE ENGINEER, WILL LEAVE AN UNSIGHTLY APPEARANCE WILL NOT BE APPROVED. ALL DISPOSAL SITES MUST BE APPROVED BY THE KANSAS DEPARTMENT OF HEALTH AND ENVIRONMENT. MATERIAL EITHER STOCKPILED OR DEPOSITED IN A FLOOD PLAN WILL REQUIRE A KANSAS STATE BOARD OF AGRICULTURE PERMIT. ANY MATERIAL DUMPED IN WATERS OF THE UNITED STATES OR WETLANDS IS SUBJECT TO U.S. CORPS OF ENGINEERS PERMITTING REGULATIONS. ANY MATERIAL BURIED OR STOCKPILED BEYOND APPROVED CONSTRUCTION LIMITS WILL REQUIRE ARCHAEOLOGICAL INVESTIGATIONS UNLESS BURIED IN A PREVIOUSLY APPROVED DISPOSAL LOCATION.
 - THE CONTRACTOR SHALL AVOID REMOVAL OR TRIMMING OF ANY TREES OR SHRUBS WHERE POSSIBLE. WHERE THE CONTRACTOR BELIEVES THE REMOVAL OR TRIMMING IS UNAVOIDABLE, HE SHALL COORDINATE SUCH WORK WITH THE ENGINEER. COSTS FOR TREE/SHRUB REMOVAL AND TRIMMING REGARDLESS OF SIZE SHALL BE CONSIDERED SUBSIDIARY TO THE LUMP SUM PRICE BID FOR "SITE CLEARING".
 - THE CONTRACTOR SHALL PREVENT ANY CONSTRUCTION DEBRIS FROM ENTERING THE EXISTING SANITARY SEWER DURING CONSTRUCTION.
 - THE CONTRACTOR SHALL GIVE ALL PROPERTY OWNERS AND/OR TENANTS OF DEVELOPED PROPERTY ABUTTING THE CONSTRUCTION OF THIS PROJECT A MINIMUM OF TEN (10) DAYS ADVANCE NOTICE PRIOR TO START OF CONSTRUCTION.
 - ALL APPROVED EXCESS EXCAVATION WHICH IS TO BE WASTED SHALL BE STOCKPILED WITHIN OR ADJACENT TO BRADLEY FAIR 2ND ADDITION AT NO ADDITIONAL COST TO THE OWNER. STOCKPILE LOCATIONS SHALL BE AS DIRECTED BY THE DEVELOPER AND IN ACCORDANCE WITH GENERAL NOTE NO. 10 ABOVE.
 - CONTRACTOR IS REQUIRED TO MAINTAIN CONTINUOUS FLOW OF SEWAGE IN EXISTING MAINS AT ALL TIMES.
 - THE CONTRACTOR SHALL SEED ALL AREAS DISTURBED BY CONSTRUCTION ACTIVITIES WITH TEMPORARY RYE GRASS. RYE GRASS SEED SHALL BE PLANTED AT A MINIMUM RATE OF SIX (6) POUNDS PER ONE THOUSAND (1,000) SQUARE FEET. THIS TEMPORARY SEEDING MAY BE OMITTED ONLY IF OTHER SEEDING IS REQUIRED IN ACCORDANCE WITH GENERAL NOTE NO. 9 ABOVE. TEMPORARY SEEDING OR PERMANENT SEEDING/SODDING SHALL BE APPLIED WITHIN 14 DAYS AFTER THE AREA HAS BEEN DISTURBED.
 - THE CONTRACTOR SHALL NOT BURY MANHOLES THAT HAVE RIM ELEVATIONS WHICH ARE LOWER THAN EXISTING GROUND AT THE MANHOLE. THE GROUND AROUND SUCH MANHOLES AND ALONG THE SEWER ALIGNMENT SHALL BE BACKFILLED TO THE APPROXIMATE ELEVATION OF THE PROPOSED GROUND ELEVATION SHOWN ON THE PLAN/PROFILE SHEETS. THE CONTRACTOR SHALL PROVIDE DRAINAGE AWAY FROM THESE MANHOLES AND SEWER LINES BY CONSTRUCTION OF TEMPORARY DITCHES OR SLOPING THE GROUND AS REQUIRED. ALL COSTS FOR THIS WORK SHALL BE CONSIDERED SUBSIDIARY TO THE INSTALLED BID PRICE FOR MANHOLES OR PIPE.
 - INTERURBAN TRAFFIC GENERATED OUTSIDE THE PROJECT AREA AND LOCAL BUSINESS OR RESIDENTIAL TRAFFIC GENERATED WITHIN THE PROJECT AREA TO BE CARRIED THROUGH CONSTRUCTION AS FURTHER PROMULGATED BY PROJECT SPECIAL PROVISIONS.
 - PRIOR TO THE START OF CONSTRUCTION THE CONTRACTOR SHALL CONTACT MR. BILL KECKLER WITH PITCHIE PAVING AT 722-6521. THE CONTRACTOR SHALL CONFIRM THAT THE PROPOSED MANHOLE RIM ELEVATIONS AS SHOWN ON THE PLANS ARE CORRECT. THE CONTRACTOR SHALL REVISE THE PROPOSED RIM ELEVATIONS AS NECESSARY TO CONFORM WITH CITY OF WICHITA STANDARDS AND SPECIFICATIONS.
 - THE CONTRACTOR SHALL PROVIDE COMPACTED EARTH FILL AROUND PROPOSED MANHOLES AS SHOWN ON THE PLANS. COST SHALL BE CONSIDERED SUBSIDIARY TO THE LUMP SUM PRICE BID FOR "SITE RESTORATION".

- B.M. #2 - CITY OF WICHITA B.M. DISC, 45' NORTH AND 48 FEET EAST OF THE INTERSECTION OF THE CENTERLINES OF 21ST STREET NORTH AND ROCK ROAD. ELEV.=214.568 CITY DATUM
- B.M. #40 - CHISELED "3" ON TOP OF CURB 70'± SOUTH OF S.E. CORNER OF "OUTBACK STEAKHOUSE", NORTH SIDE OF LOT 1, BLOCK 1, BRADLEY FAIR 2ND ADDITION. ELEV.=211.62 CITY DATUM
- B.M. #21 - CHISELED "3" ON TOP OF CURB, SOUTH CURB RETURN, SOUTH SIDE ROCKHILL ROAD, WEST SIDE ROCK ROAD. ELEV.=209.01 CITY DATUM
- B.M. #99 - RAILROAD SPIKE IN WEST FACE OF 12" ELM, 80' EAST AND 120' NORTH OF THE NORTHWEST CORNER OF RESERVE "A", BRADLEY FAIR 2ND ADDITION. ELEV.=204.49 CITY DATUM

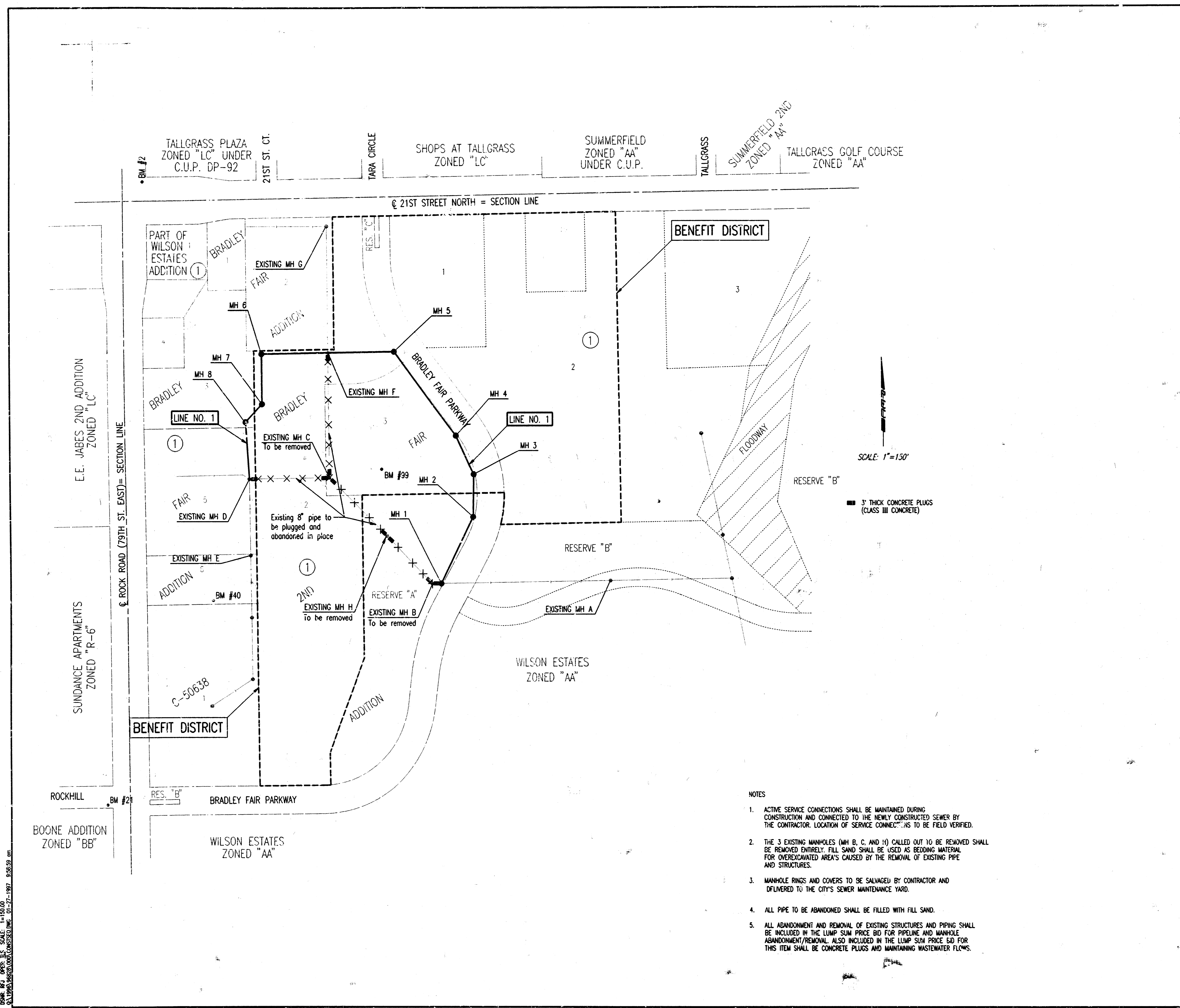
1 Revised as per Addendum No. 1		MDK	2/11/97
No.	Revision	By	Date
LATERAL 69, MAIN 22 WAR INDUSTRIES SEWER			
KEY MAP AND GENERAL NOTES			
CITY OF WICHITA PROJECT NO. 468-76-245-82601-000-000-001			
PROFESSIONAL ENGINEERING CONSULTANTS, P.A. ENGINEERS WICHITA, KANSAS			
Designed by	MDK	Job No.	34-96828
Drawn by	BB	Date	November 1996
		Sheet	2 of 9

DATE: 01/11/97, SCALE: 1"=150.00'
 DRAWN BY: BB, CHECKED BY: MDK, DATE: 02/11/97, 9:15 AM

CONSTRUCTION/ABANDONMENT SCHEDULE

AT LEAST TWO WEEKS PRIOR TO BEGINNING CONSTRUCTION, THE CONTRACTOR SHALL SUBMIT, FOR THE ENGINEER'S APPROVAL, A DETAILED CONSTRUCTION/ABANDONMENT SCHEDULE FOR COMPLETING THE WORK. THE CONTRACTOR'S SCHEDULE SHALL INCLUDE DESCRIPTIONS OF THE PROCEDURES THAT THE CONTRACTOR INTENDS TO USE IN COMPLETING THE WORK, MEANS OF PROTECTING AND SUPPORTING EXISTING IMPROVEMENTS AND OPERATIONS, AND SCHEDULED DATES OF COMPLETION FOR EACH PORTION OF THE PROJECT. THE CONTRACTOR'S PROPOSED SCHEDULE AND PROCEDURES SHALL BE APPROVED BY THE ENGINEER PRIOR TO THE START OF CONSTRUCTION. THE CONTRACTOR'S PROPOSED SCHEDULE AND PROCEDURES SHALL ADDRESS, BUT SHALL NOT NECESSARILY BE LIMITED TO, THE FOLLOWING:

1. CONSTRUCT SANITARY SEWER LINE NO. 1 (MH 1 TO EXISTING MH D). INSTALL TEMPORARY PLUGS AT MH 1, EXISTING MH F, AND EXISTING MH D ON NEWLY CONSTRUCTED LINE.
2. PERFORM ALL REQUIRED TESTING.
3. UPON ACCEPTANCE OF THE NEWLY CONSTRUCTED SEWER, REMOVE TEMPORARY PLUGS AND DIVERT FLOW THRU THE NEWLY CONSTRUCTED SEWER. INSTALL PERMANENT CONCRETE PLUGS AT THE LOCATIONS AS SHOWN, AND ABANDON EXISTING MHS AND PIPE AS SHOWN.

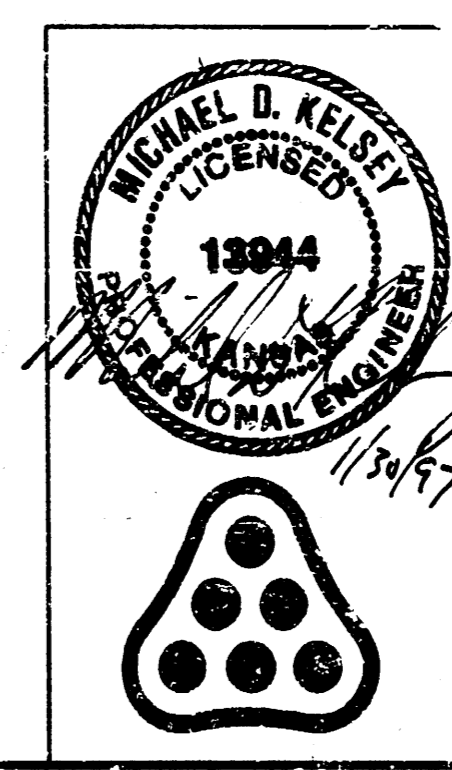


SCALE: 1"=150'

3" THICK CONCRETE PLUGS (CLASS III CONCRETE)

NOTES

1. ACTIVE SERVICE CONNECTIONS SHALL BE MAINTAINED DURING CONSTRUCTION AND CONNECTED TO THE NEWLY CONSTRUCTED SEWER BY THE CONTRACTOR. LOCATION OF SERVICE CONNECTIONS TO BE FIELD VERIFIED.
2. THE 3 EXISTING MANHOLES (MH B, C, AND H) CALLED OUT TO BE REMOVED SHALL BE REMOVED ENTIRELY. FILL SAND SHALL BE USED AS BEDDING MATERIAL FOR OVERCROWNED AREAS CAUSED BY THE REMOVAL OF EXISTING PIPE AND STRUCTURES.
3. MANHOLE RINGS AND COVERS TO BE SALVAGED BY CONTRACTOR AND DELIVERED TO THE CITY'S SEWER MAINTENANCE YARD.
4. ALL PIPE TO BE ABANDONED SHALL BE FILLED WITH FILL SAND.
5. ALL ABANDONMENT AND REMOVAL OF EXISTING STRUCTURES AND PIPING SHALL BE INCLUDED IN THE LUMP SUM PRICE BID FOR PIPELINE AND MANHOLE ABANDONMENT/REMOVAL. ALSO INCLUDED IN THE LUMP SUM PRICE BID FOR THIS ITEM SHALL BE CONCRETE PLUGS AND MAINTAINING WASTEWATER FLOWS.

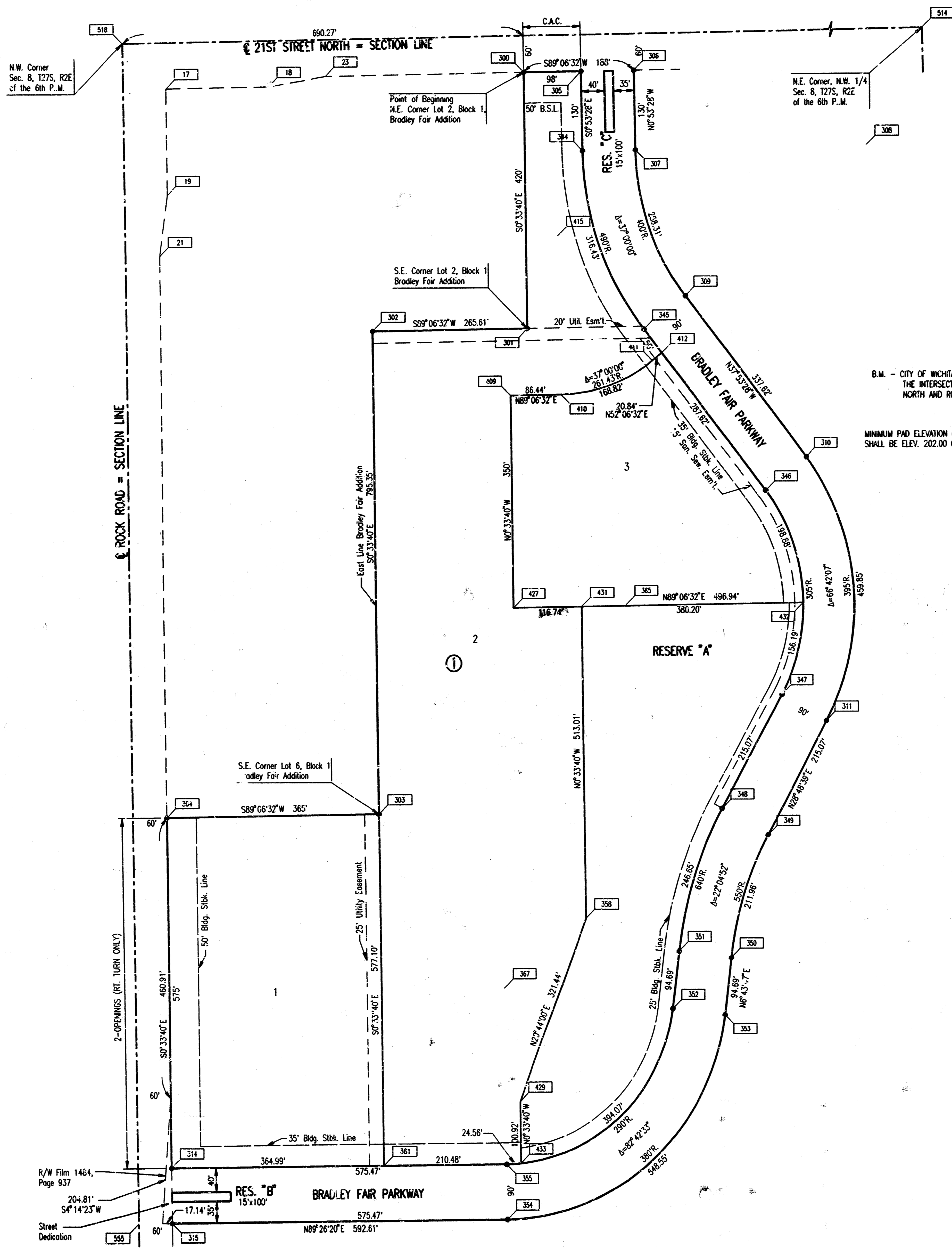


No.	Revision	By	Date
	LATERAL 69, MAIN 22 WAR INDUSTRIES SEWER		
CONSTRUCTION SEQUENCE AND PIPE ABANDONMENT PLAN			
CITY OF WICHITA PROJECT NO. 468-76-245-82501-000-000-001			
PROFESSIONAL ENGINEERING CONSULTANTS, P.A. ENGINEERS WICHITA, KANSAS			
Designed by	MDK	Job No.	34-96828
Drawn by	TDS	Date	November 1996
			Sht. 3 of 9

ENGINE: MICHAEL D. KEISER, P.E., LICENSE NO. 13944
 EXPIRES 12/31/2000
 ARCHITECT: MICHAEL D. KEISER, P.E., LICENSE NO. 13944
 EXPIRES 12/31/2000

BRADLEY FAIR 2ND ADDITION TO WICHITA, SEDGWICK COUNTY, KANSAS

	NORTHING	EASTING
PNT 17	17027.5088003	13459.99559478
PNT 18	17030.23046843	13634.97442927
PNT 19	16852.51719023	13461.70921618
PNT 21	16752.37510279	13447.68914758
PNT 23	17046.78389333	13734.72904883
PNT 300	17052.08259289	14075.38784262
PNT 301	16632.10272936	14079.50053400
PNT 302	16627.97179916	13813.91882200
PNT 303	15832.65609473	13821.70702497
PNT 304	15826.97947207	13456.75116927
PNT 305	17053.60672720	14173.37598994
PNT 306	17055.00644237	14263.36510482
PNT 307	16925.02216532	14265.38691563
PNT 308	16931.24312166	14665.33853733
PNT 309	16685.57795055	14349.66683492
PNT 310	16419.13476824	14557.02089918
PNT 311	15986.18250360	14591.40037698
PNT 314	15252.00703985	13462.38163961
PNT 315	15162.01135481	13463.26293062
PNT 344	16923.62245014	14175.39780075
PNT 345	16630.30328705	14278.64070188
PNT 346	16363.86010274	14485.99476614
PNT 347	16029.55519108	14512.54094520
PNT 348	15841.10552606	14408.89362944
PNT 349	15797.73283858	14487.75306122
PNT 350	15597.13035682	14423.46138210
PNT 351	15507.67718364	14334.08149374
PNT 352	15513.64398289	14329.98557605
PNT 353	15503.09715806	14412.36546442
PNT 354	15167.64642138	14038.70472003
PNT 355	15257.64210642	14037.82342902
PNT 358	15660.45965454	14175.15168942
PNT 361	15255.58110520	13827.35808390
PNT 365	16176.54040976	14245.29509305
PNT 366	15532.67752621	14969.67181099
PNT 367	15547.62820267	14034.98371355
PNT 409	16521.61743829	14049.97763096
PNT 410	16522.96178696	14136.40717641
PNT 411	16578.04519702	14292.90238881
PNT 412	16590.94432425	14309.34884827
PNT 415	16784.36093600	14132.34130793
PNT 427	16171.63421869	14053.40487378
PNT 429	15359.83321188	14061.35450969
PNT 431	16173.44976485	14170.12818864
PNT 432	16179.36278123	14550.28204412
PNT 433	15258.92162827	14062.34269564
PNT 514	17142.57100000	16035.05200000
PNT 518	17101.34000000	13384.26500000
PNT 555	15161.42382747	13403.26580726



SCALE: 1"=100'

B.M. - CITY OF WICHITA S.M. D.S.C. 45' NORTH A:10 48' EAST OF THE INTERSECTION OF THE CENTERLINES OF 21ST STREET NORTH AND ROCK ROAD. ELEV. 214.566 CITY DATUM

MINIMUM PAD ELEVATION (LOWEST OPENING) FOR LOTS 2 AND 3, BLOCK 1, SHALL BE ELEV. 202.00 CITY DATUM; ELEV. 1389.40 M.S.L.

DSNR: REF OPER: REF SCALE: 1=100.00
 01-1996-96828-000-PLAT/MC 01-20-1997 10:15:37 am

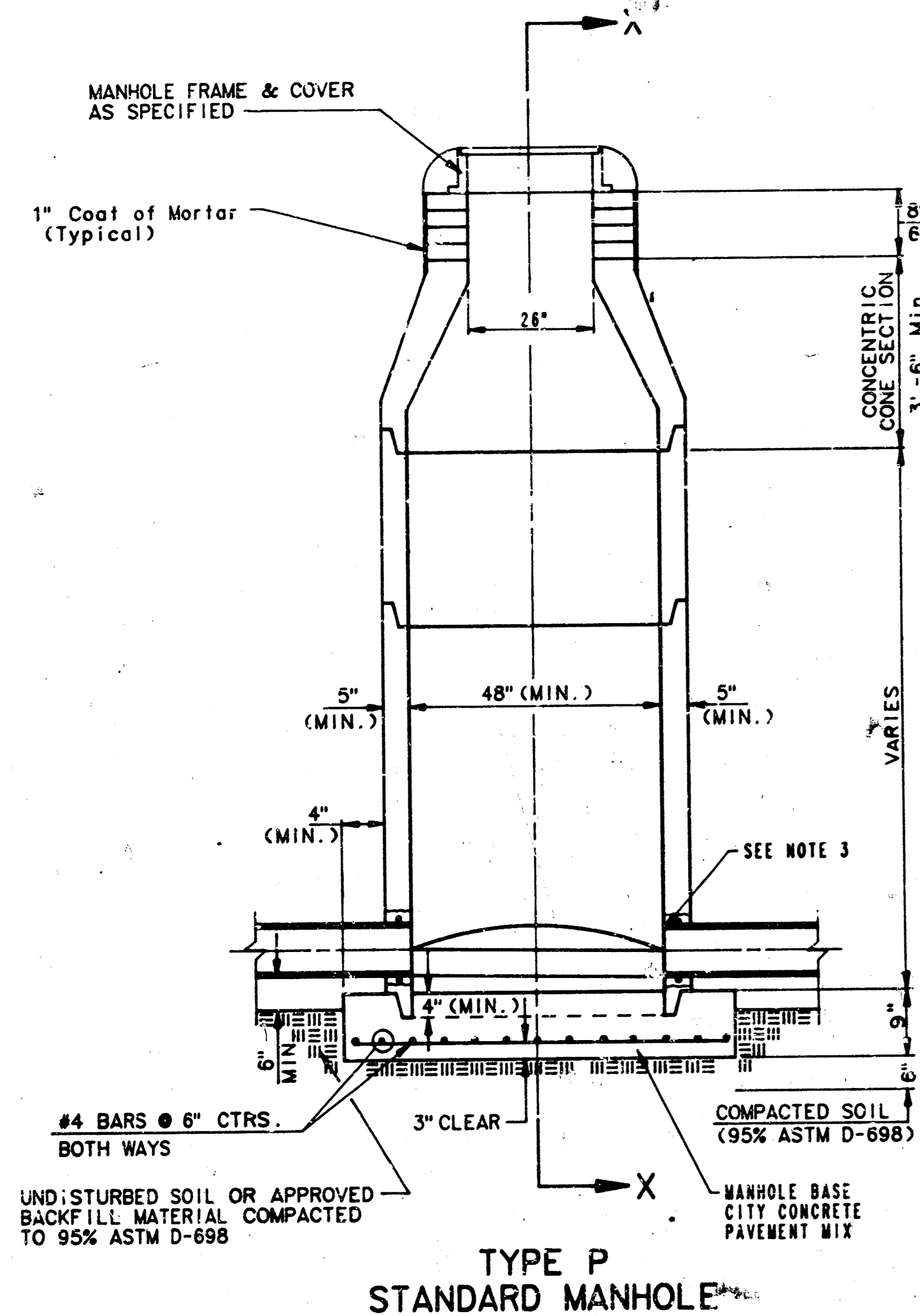
LATERAL NO. 69, MAIN NO. 22 WAR INDUSTRIES SEWER	
PLAT	
C.O.W. PROJ. NO. 458-76-245-82601-007-000-001	
PROFESSIONAL ENGINEERING CONSULTANTS, P.A. ENGINEERS WICHITA, KANSAS	
Designed by	Checked by
Drawn by DEP	Date MAR, 1996 Job No. 96828

SEWER APPURTENANCES DETAILS

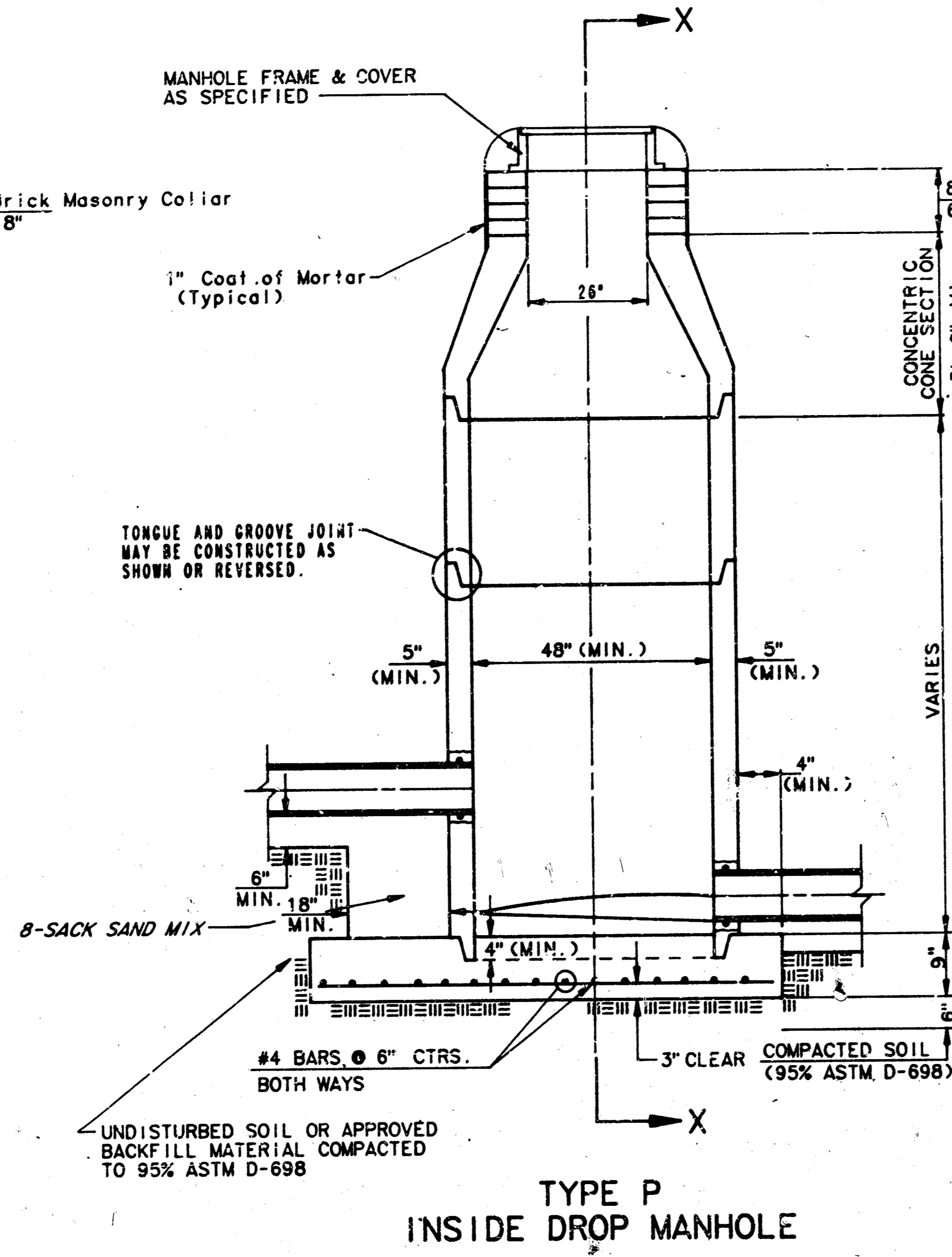
ADOPTED AS STANDARD DESIGN

BY

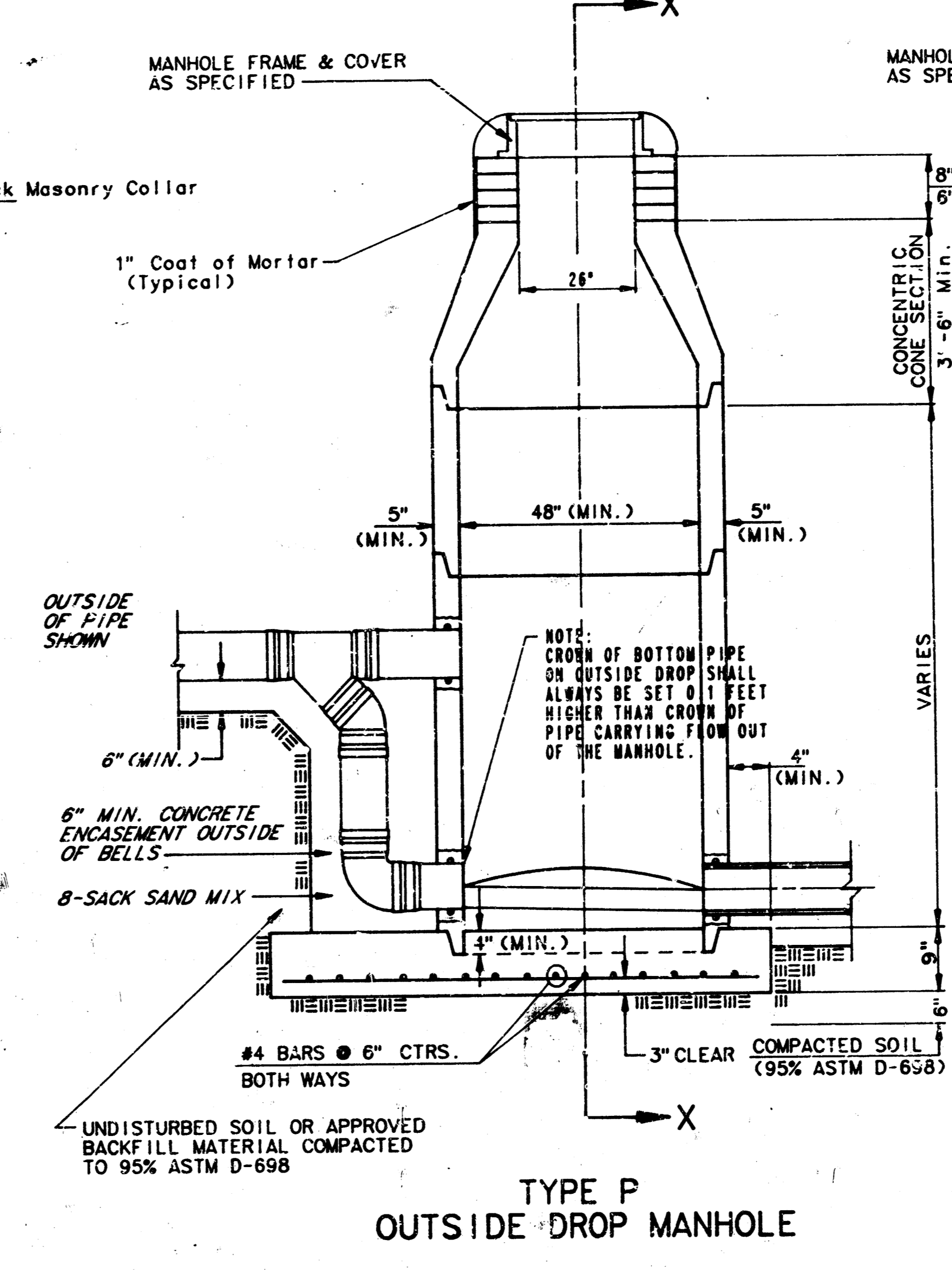
CITY OF WICHITA



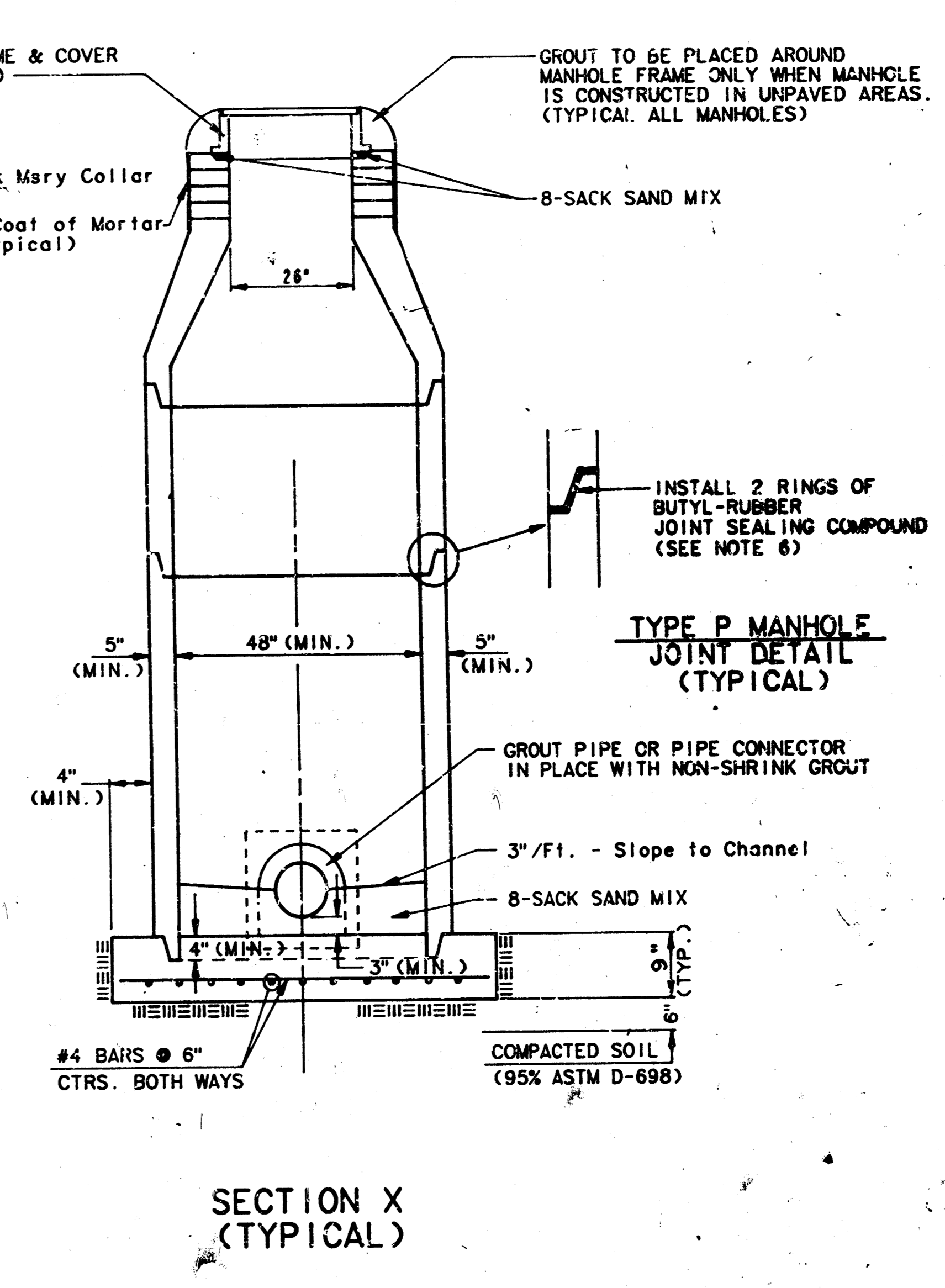
**TYPE P
STANDARD MANHOLE**



**TYPE P
INSIDE DROP MANHOLE**



**TYPE P
OUTSIDE DROP MANHOLE**



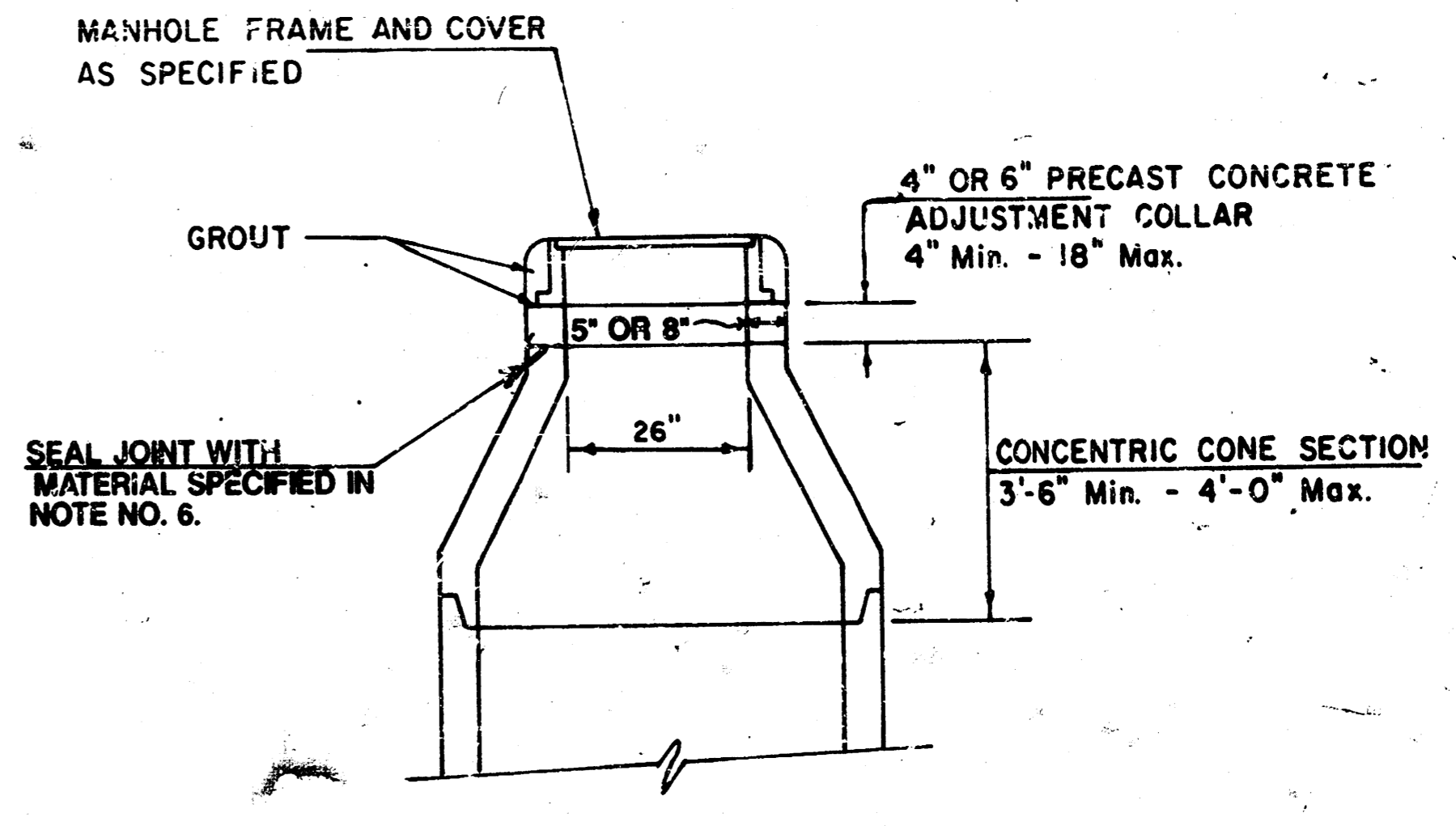
**SECTION X
(TYPICAL)**

GENERAL NOTES
PRECAST MANHOLE NOTES

1. ALL PRECAST CONCRETE MANHOLE SECTIONS SHALL CONFORM TO THE LATEST REVISION OF A.S.T.M. C478 AS MODIFIED BY THE SPECIFICATIONS.
2. NON-SHRINK GROUT SHALL BE NON-METALLIC TYPE.
3. APPROVED FLEXIBLE WATERSTOP GASKETS SHALL BE INSTALLED TO JOIN THE SEWER TO THE MANHOLE WALL WHEN A.B.S. COMPOSITE PIPE OR P.V.C. PIPE IS USED. FOR OTHER TYPES OF PIPE THE SEWER SHALL BE GROUTED IN PLACE WITH NON-SHRINK GROUT; THE SEWER PIPE SHALL BE SUPPORTED WITH CONCRETE ENCASEMENT A MINIMUM OF 3 FEET FROM THE MANHOLE WALL AND TO THE FIRST JOINT FOR V.C.P. SUCH THAT THE JOINT REMAINS FLEXIBLE.
4. ALL INSIDE SURFACES OF THE CONCRETE MANHOLE WHICH WOULD BE EXPOSED TO SEWER GAS SHALL BE COATED WITH 2 COATS TMECC SERIES 66 HI-BUILD EPOXYLINE, DRY THICKNESS OF 8 MILS (MIN.).
5. EXTERIOR MANHOLE WALLS SHALL BE COATED WITH 1 COAT MOBILARMA 833 BITUMINUS COATING.
6. JOINT SEALING COMPOUND SHALL BE KENT SEAL NO. 2 OR APPROVED EQUIV.
7. PRECAST MANHOLES SHALL BE SET AT LEAST 4 INCHES INTO THE MANHOLE BASE.
8. TOP OF MANHOLE FLOOR SLAB SHALL BE AT LEAST 3 INCHES BELOW THE FLOW LINE OF THE OUTLET PIPE TO INSURE SUFFICIENT MINIMUM THICKNESS OF SHAPED INVERT.
9. LIFTING HOLES SHALL BE FILLED WITH NON-SHRINK GROUT AND THE INTERIOR SURFACE COATED AS SPECIFIED.
10. MORTAR USED IN MASONRY CONSTRUCTION SHALL CONTAIN 8 SACKS OF CEMENT PER CUBIC YARD. CONCRETE USED IN MANHOLE BASES SHALL CONFORM TO THE REQUIREMENTS OF CONCRETE FOR CONCRETE PAVEMENT CONSTRUCTION AS SPECIFIED IN THE CITY STANDARD PAVING SPECIFICATIONS USING CITY CONCRETE PAVEMENT MIX WITHOUT AIR ENTRAINING ADJUSTURE. MORTAR SHALL BE PLACED AROUND THE MANHOLE RING AS SHOWN ON THE DRAWINGS WHEN MANHOLES ARE CONSTRUCTED IN UNPAVED AREAS. MANHOLES CONSTRUCTED WHERE PIPE SIZES ARE SMALLER THAN 24" SHALL HAVE AN INSIDE DIAMETER OF 4". MANHOLES CONSTRUCTED WHERE PIPE SIZES ARE 24" OR LARGER SHALL HAVE AN INSIDE DIAMETER OF 5". COMPLETED MANHOLE SHALL BE WITHOUT LEAKS AND WATER TIGHT.

11. REINFORCING STEEL SHALL BE INSTALLED IN THE MANHOLE BASES AND SHALL CONSIST OF NO. 4 BARS PLACED ON 6" CENTERS IN BOTH DIRECTIONS. THE MANHOLE BASE REINFORCEMENT SHALL BE PLACED AT LEAST 3" ABOVE THE BOTTOM OF THE MANHOLE BASE. ALL COSTS FOR FURNISHING AND INSTALLING REINFORCING STEEL SHALL BE INCLUDED IN THE UNIT PRICE BID FOR THE MANHOLE.
12. OPENINGS SHALL BE CUT INTO THE MANHOLE WALL WHEN OUTSIDE DROPS ARE CONSTRUCTED ON EXISTING MANHOLES. SUCH OPENINGS CUT INTO EXISTING MANHOLES SHALL BE AS SMALL AS PRACTICAL TO FACILITATE INSTALLING AND GROUTING THE NEW PIPE IN PLACE. WATERSTOP GASKETS SHALL BE USED WITH P.V.C. AND A.B.S. COMPOSITE PIPE. THE NEW PIPE SHALL BE GROUTED INTO THE OPENING USING AN APPROVED NONSHRINK GROUT FOR THE FULL MANHOLE WALL THICKNESS. THE EXTERIOR OF THE COMPLETED CONNECTION SHALL BE SEALED WITH AN APPROVED BITUMINOUS COATING SUCH THAT THE CONNECTION WILL BE WATER TIGHT. FLOOR OF MANHOLE SHALL BE MODIFIED TO FORM NEW FLOW CHANNEL FOR THE NEW CONNECTION AS INDICATED BY THE DRAWING. THIS WORK, INCLUDING MODIFICATION OF MANHOLE FLOOR, SHALL BE PAID FOR AT THE UNIT PRICE BID FOR OUTSIDE DROP STACK CONSTRUCTED ON EXISTING MANHOLE.
13. THE FLOORS OF ALL MANHOLES SHALL BE SHAPED WITH FLOW CHANNELS SUCH THAT THE MANHOLES WILL BE SELF-CLEANING AND FREE OF AREAS WHERE SOLIDS COULD BE DEPOSITED AS SEWAGE FLOWS THROUGH THE MANHOLE. FLOW CHANNELS FOR INLET PIPES TO THE OUTLET PIPE. FLOW CHANNELS SHALL BE FORMED TO MATCH THE BOTTOM HALVES OF THE INFLOWING PIPES AND THE OUTFLOWING PIPE AS SHOWN BY THE DRAWINGS EXCEPT FOR INSIDE DROP MANHOLES. FLOW CHANNELS FOR INSIDE DROP MANHOLES SHALL BE CONSTRUCTED AS INDICATED BY THE DRAWING. MANHOLE FLOORS SHALL HAVE SLOPES OF 3 INCHES PER FOOT IN THE AREAS OUTSIDE OF THE FLOW CHANNELS SLOPED TOWARD THE FLOW CHANNELS. PIPES LAID THROUGH MANHOLES SHALL HAVE THE TOP HALF REMOVED TO REAT LINES FOR THE FULL INSIDE DIAMETER OF THE MANHOLE. MANHOLE FLOORS SHALL THEN BE SHAPED AROUND THE BOTTOM HALF OF THE PIPE WHICH FORMS THE FLOW CHANNEL.
14. PIPES INSTALLED WITHIN THE EXCAVATION MADE FOR THE MANHOLE SHALL BE CRADLED WITH CONCRETE TO THE LIMITS OF THE MANHOLE EXCAVATION. WHEN CLAY PIPE IS USED, THE CRADLE SHALL EXTEND TO THE FIRST JOINT OUTSIDE THE MANHOLE. THE CRADLE SHALL BE TERMINATED AT THE CLAY PIPE JOINT IN A MANNER WHICH WILL MAINTAIN THE FLEXIBILITY OF THE JOINT. COST OF CRADLE WITHIN MANHOLE EXCAVATION OR TO CLAY PIPE JOINTS ADJACENT TO MANHOLE SHALL BE INCLUDED IN THE UNIT PRICE BID FOR THE MANHOLE.

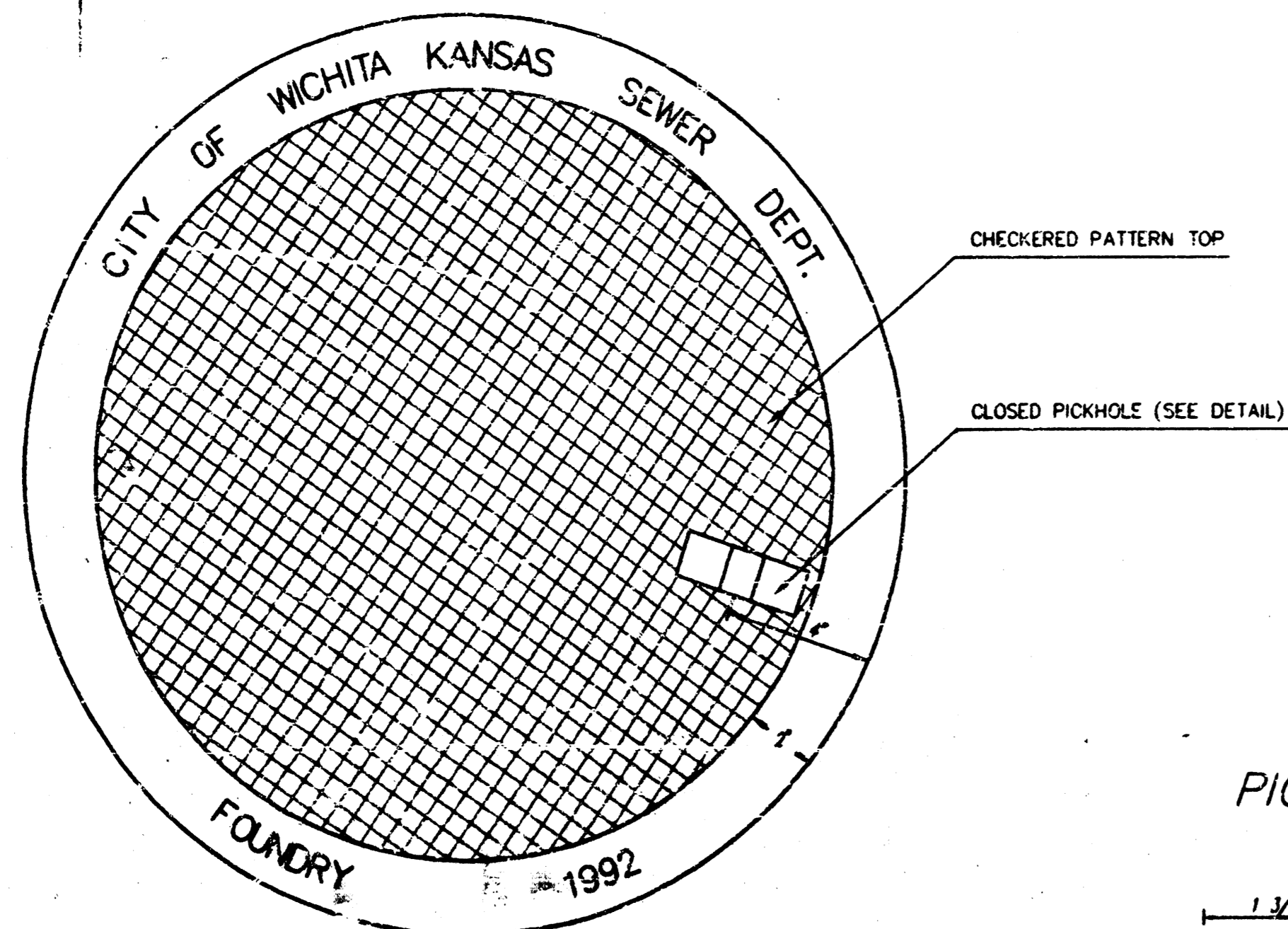
15. MANHOLE COVER CASTINGS AND MANHOLE FRAME CASTINGS SHALL CONFORM TO THE REQUIREMENTS AS INDICATED IN THE STANDARD SPECIFICATIONS AND AS SHOWN IN THE STANDARD DETAIL DRAWING.
16. THE VERTICAL FREE FALL DROP INSIDE MANHOLES SHALL NOT EXCEED 2'. THE CROWNS OF INFLOWING PIPES SHALL NEVER BE SET LOWER THAN THE CROWN OF THE OUTFLOWING PIPE.
17. STANDARD MANHOLES AND STANDARD INSIDE DROP MANHOLES SHALL BE BID AS STANDARD MANHOLES FOR THE TYPE AND DIAMETER INDICATED. OUTSIDE DROP MANHOLES SHALL BE BID AS STANDARD OUTSIDE DROP MANHOLES FOR THE TYPE AND DIAMETER INDICATED. ALL MANHOLE DIAMETERS WILL BE 4" UNLESS INDICATED OTHERWISE.
18. A BRICK MASONRY COLLAR SHALL BE INSTALLED BETWEEN THE CAST IRON FRAME AND THE CONCENTRIC CONE. THE COLLAR WILL HAVE 8" WALLS AND A VERTICAL HEIGHT OF 6" MINIMUM AND 18" MAXIMUM. A 1" COAT OF MORTAR WILL BE PLASTERED ON THE OUTSIDE OF THE COLLAR.



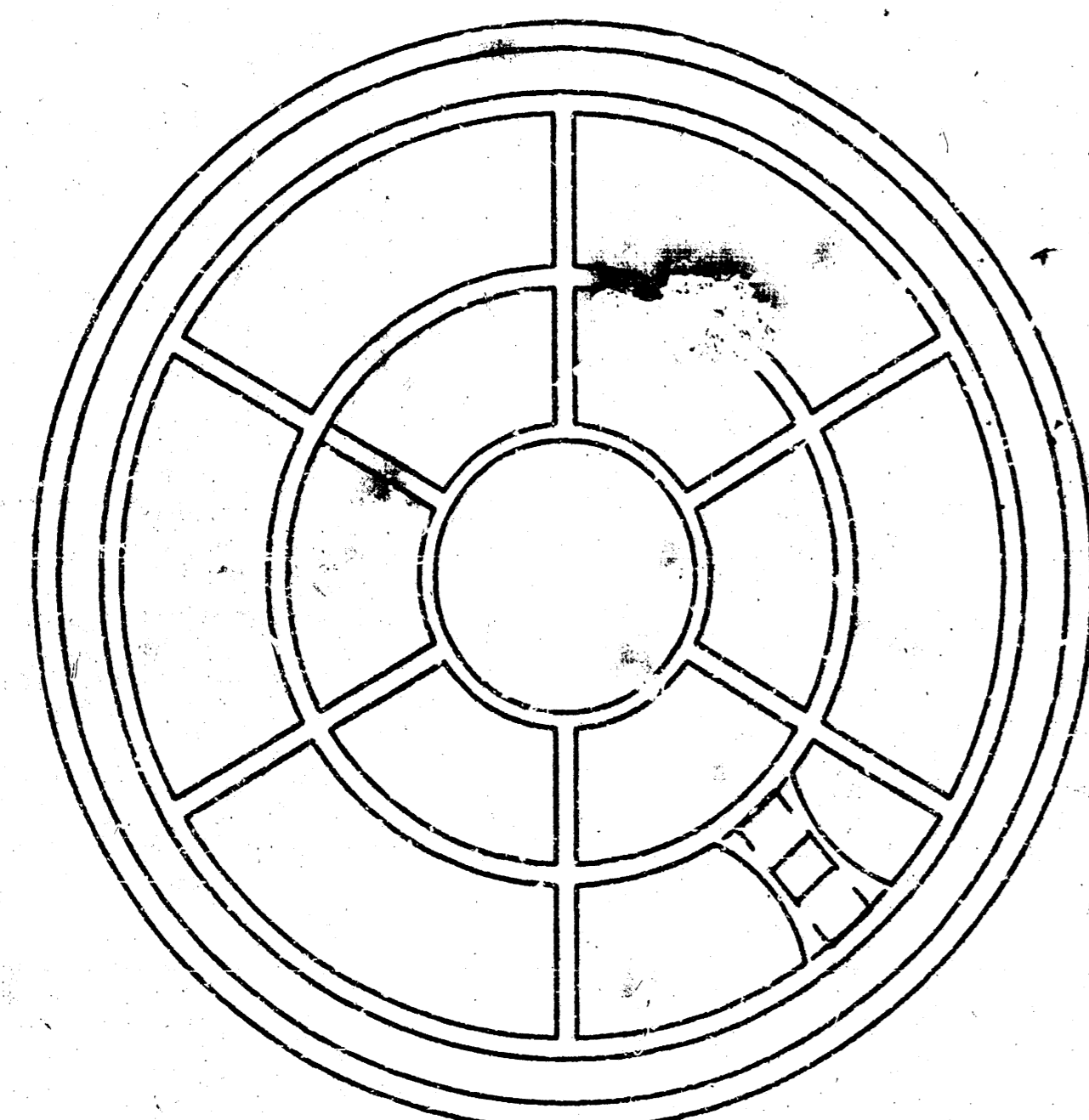
**ALTERNATE CONSTRUCTION
IN UNPAVED AREAS**

REVISED NOV. 1983
NOTE NO. 16 REVISED JAN. 1991
Revised 3-21-89
Revised 8-10-88
Revised: June 12, 1988

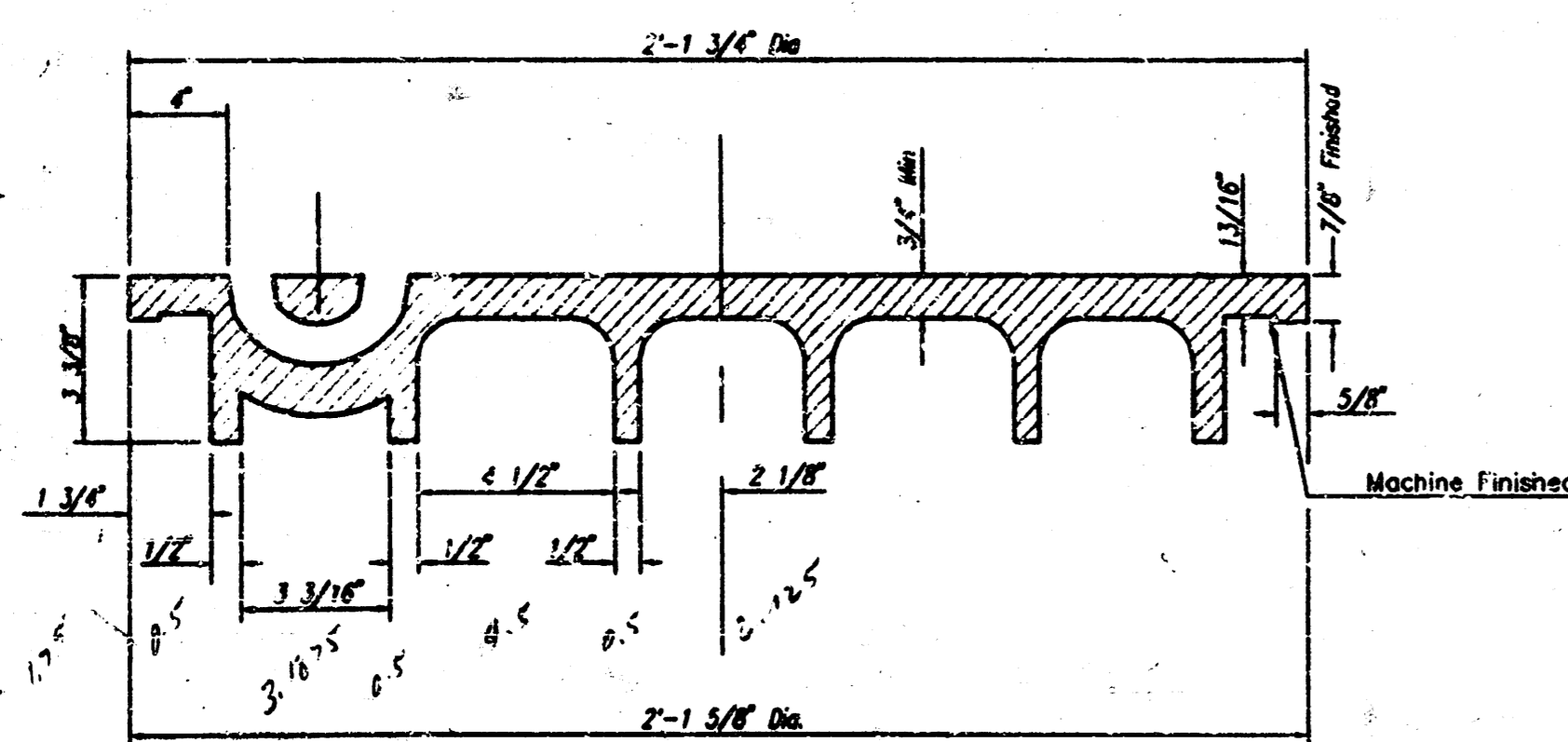
MANHOLE COVER
Weight = 180 Lbs.



TOP VIEW



BOTTOM VIEW

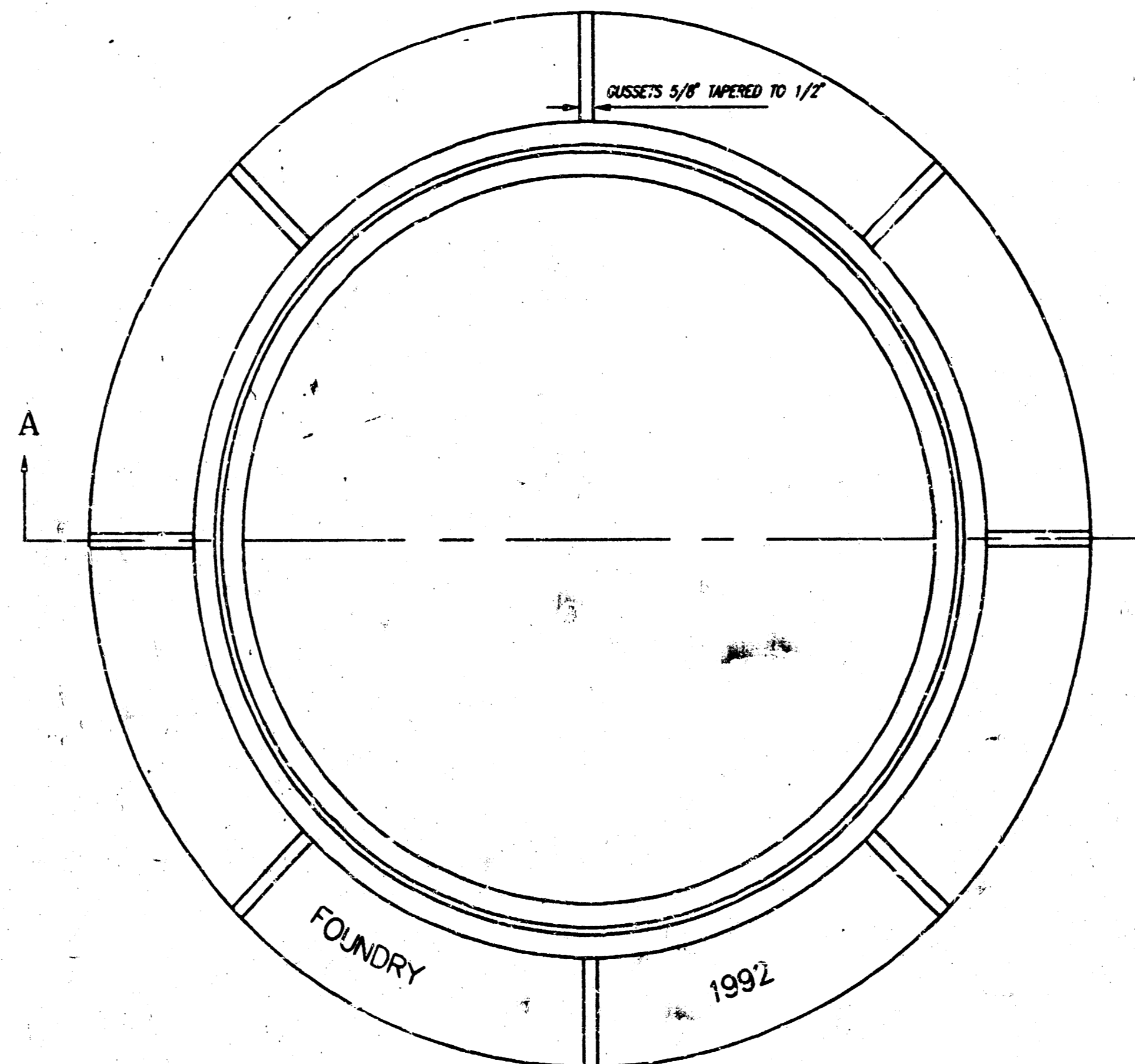


SECTION VIEW

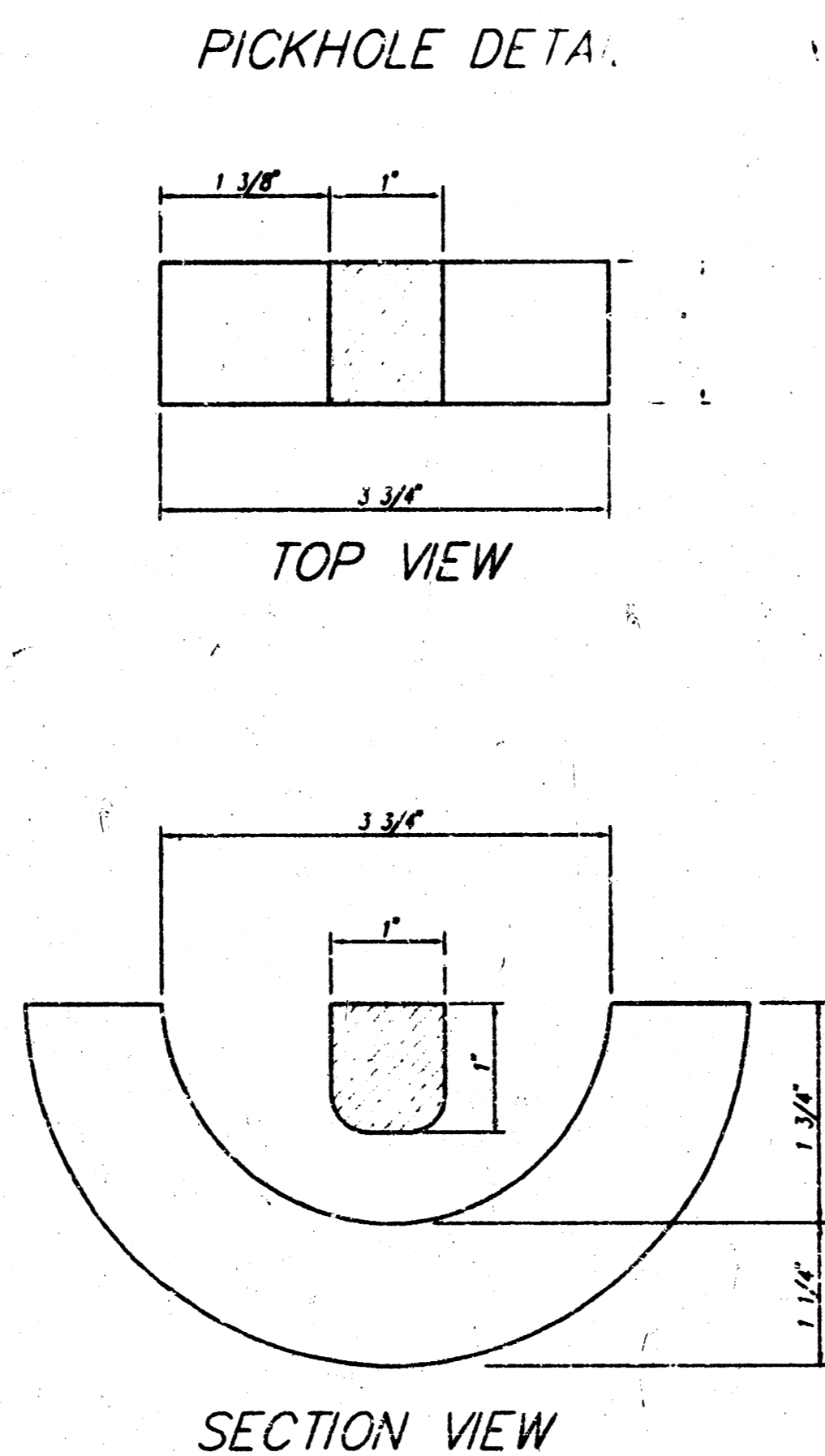
MANHOLE FRAME AND COVER DETAIL

ADOPTED AS STANDARD DESIGN BY
CITY OF WICHITA, KANSAS

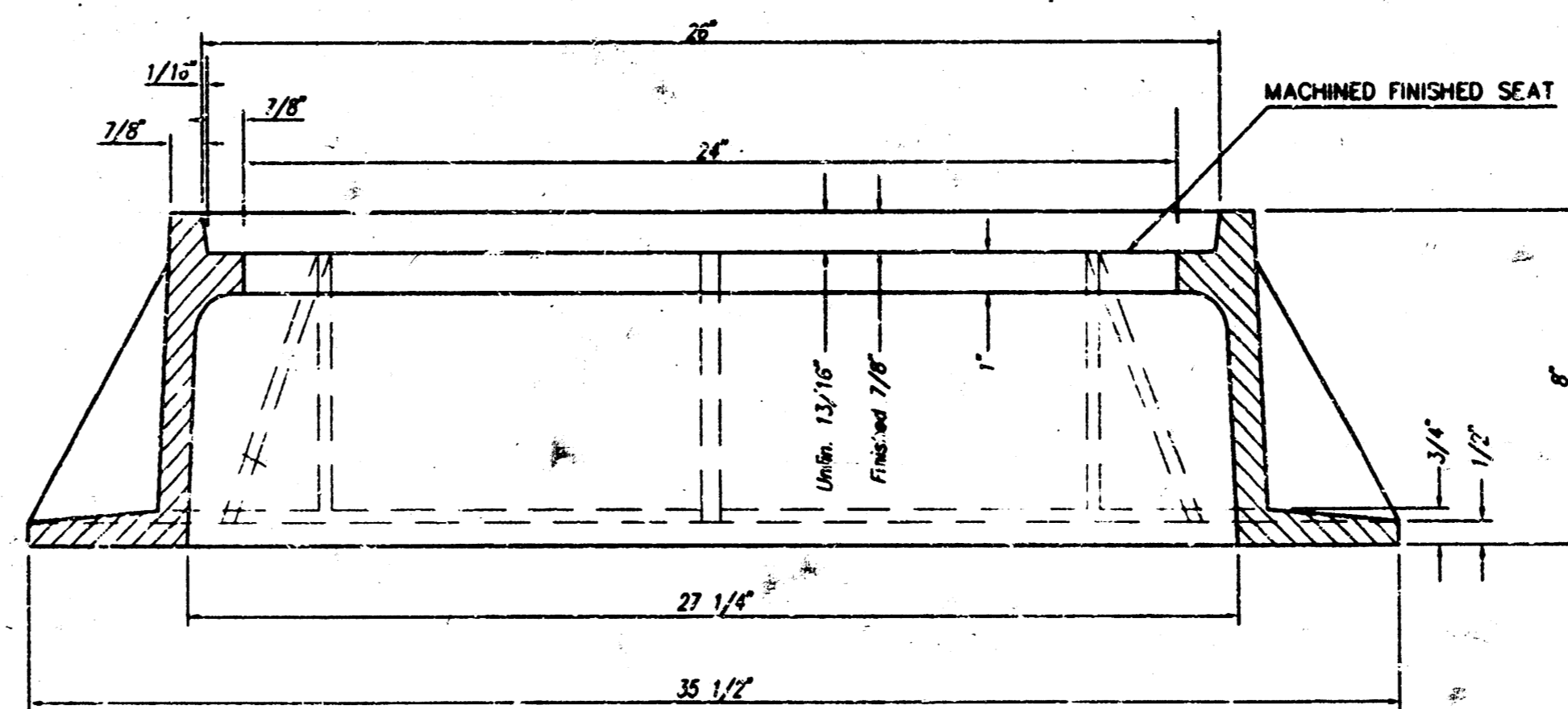
MANHOLE FRAME
Weight = 240 Lbs.



TOP VIEW



SECTION VIEW



SECTION A-A

GENERAL NOTES

MANHOLE CASTINGS SHALL BE MANUFACTURED USING GOOD QUALITY GRAY IRON CONFORMING TO CLASS 30 OF A.S.T.M. DESIGNATION A-48. DIMENSIONS AND WEIGHTS SHOWN ON THE DETAILED DRAWINGS SHALL BE CONSIDERED AS MINIMUM REQUIREMENTS AND ANY DEVIATIONS FROM THE DIMENSIONS SHOWN MUST BE SPECIFICALLY APPROVED. THE FINISHED CASTINGS SHALL BE OF UNIFORM QUALITY, FREE FROM BLOWHOLES, POROSITY, HARD SPOTS, SHRINKAGE DISTORTIONS OR OTHER DEFECTS.

MANHOLE CASTINGS SHALL BE MANUFACTURED SUCH THAT A COVER MANUFACTURED BY ANY ONE FOUNDRY WILL FIT INTERCHANGEABLY INTO A FRAME MANUFACTURED BY ANOTHER FOUNDRY AND STILL MEET ALLOWABLE CLEARANCES AND NON-ROCKING REQUIREMENTS. THIS WILL REQUIRE MANUFACTURING OF THE MATCHING FACES ON THE COVER AND THE FRAME TO CLOSE TOLERANCES.

THE OUTSIDE CIRCUMFERENCE OF THE VERTICAL FACE OF THE COVER AND THE INSIDE CIRCUMFERENCE OF THE VERTICAL FACE IN THE FRAME RECESS SHALL BE MANUFACTURED TO TOLERANCES SUCH THAT THE CLEARANCE BETWEEN THE COVER AND FRAME WILL NOT EXCEED 1/8" AT ANY POINT AROUND THE CIRCUMFERENCE OF THE COVER. THE SEALING SURFACES BETWEEN THE COVER AND FRAME SHALL BE MACHINED SUCH AS THESE SURFACES SHALL MAKE FULL CONTACT FOR THEIR FULL CIRCUMFERENCE TO PRECLUDE THE COVER FROM ROCKING IN THE FRAME.

THE MANHOLE FRAME AND COVER SHALL BE MARKED WITH LETTERING INDICATING THE NAME OF THE MANUFACTURER AND THE YEAR WHEN THE COVER OR FRAME WAS CAST. THE COVER SHALL BE FURTHER IDENTIFIED WITH REGARDS TO OWNERSHIP USING LETTERS AT LEAST 1 INCH IN HEIGHT. THIS IDENTIFICATION SHALL BE "CITY OF WICHITA SEWER DEPARTMENT". THE WORD DEPARTMENT MAY BE ABBREVIATED. THE TEXTURE OF THE TOP SURFACE OF THE COVER SHALL BE MANUFACTURED IN A CHECKERED PATTERN DESIGN AS INDICATED ON THE DRAWINGS. SMOOTH BLOCKOUTS SHALL BE UTILIZED TO HIGHLIGHT THE LETTERING ON THE COVER SURFACE. THE TOTAL AREA OF SMOOTH SURFACE BLOCKOUT SHALL NOT EXCEED THE AREA AS INDICATED ON THE DRAWING. POSITIONING OF SMOOTH BLOCKOUTS AND LETTERING MAY VARY FROM THAT SHOWN ON THE DETAILED DRAWING.

MANHOLE CASTINGS SHALL WEIGH A MINIMUM OF 180 POUNDS ON THE SOLID COVER AND 240 POUNDS ON THE MANHOLE RING. THIS IS A TOTAL OF 420 POUNDS ON A RING AND COVER SET. CASTINGS WEIGHING LESS THAN THE MINIMUM SPECIFICATIONS WILL NOT BE ACCEPTED.

TO INSURE CONFORMANCE TO TENSILE STRENGTH REQUIREMENTS ALL CASTINGS SHALL BE JULIAN HEAT DATED WITH THE FOLLOWING REQUIREMENTS:

TWO TEST BAR SPECIMENS MUST BE POURED WHEN PRODUCING CITY OF WICHITA CASTINGS. ONE OF THE TEST BAR SPECIMENS SHALL BE SENT TO AN INDEPENDENT LABORATORY FOR TENSILE STRENGTH VERIFICATION TESTING. A TEST REPORT SHALL ACCOMPANY EACH SHIPMENT OF CASTINGS. THE HEAT DATE(S) ON THE CASTINGS SHALL RESPOND TO THE TENSILE STRENGTH REPORT(S). THE TEST REPORT WILL BE PAID FOR BY THE SUPPLIER. THE REMAINING TEST BAR SPECIMEN WILL BE SHIPPED TO SEWER MAINTENANCE AT 715 W. HARRY, WICHITA, KANSAS 67213.

MANHOLE FRAME AND COVER DETAIL		REVISED
ADOPTED AS STANDARD DESIGN BY CITY OF WICHITA, KANSAS		6/27/95
CITY OF WICHITA, KANSAS M. E. LUNDEBAK - CITY ENGINEER		SHEET
PROJ. NO.	468-76-245-6260-000-000-001	OF

14-2-3-15