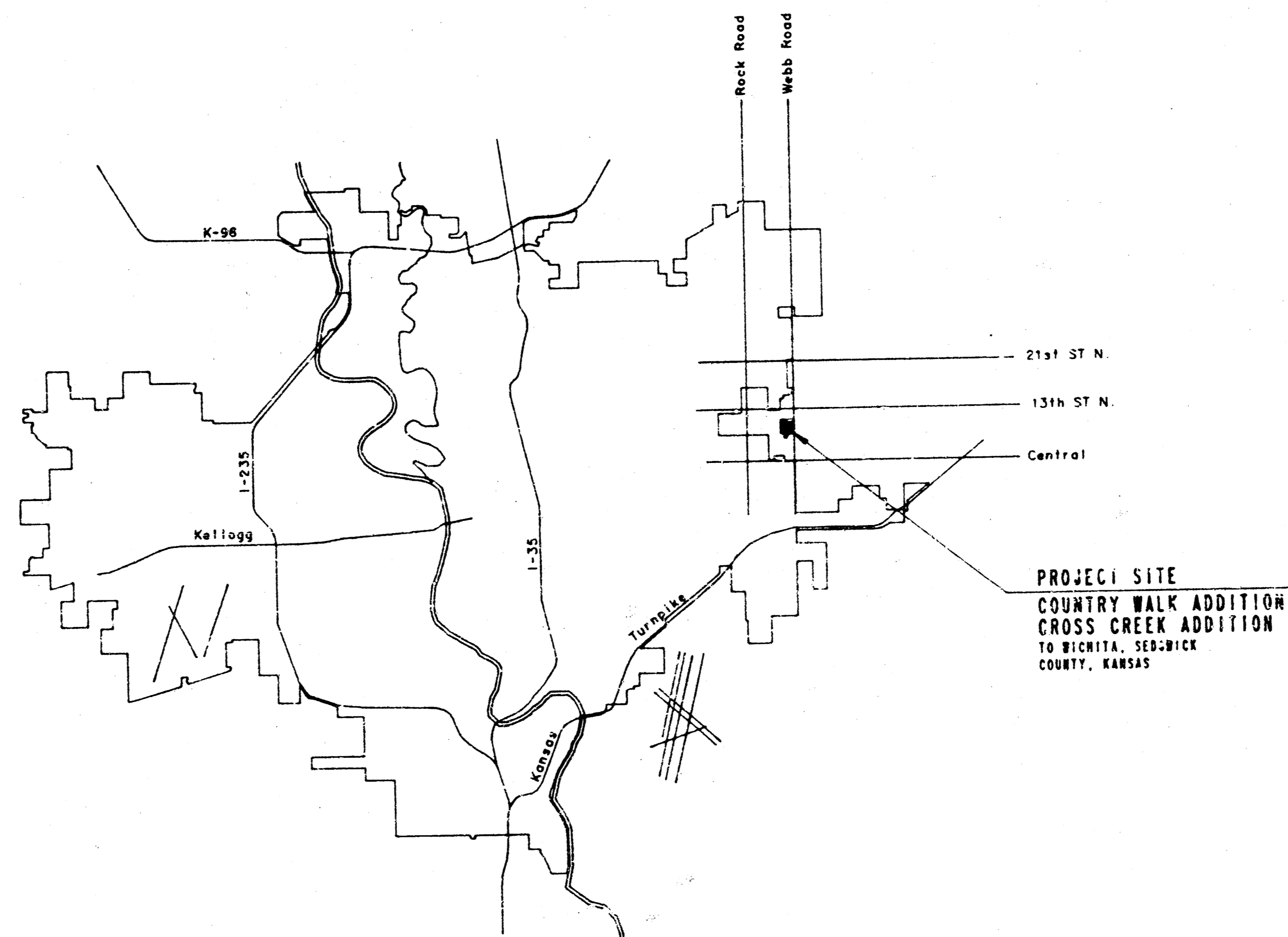


CONSTRUCTION PLANS FOR
LATERAL 13, MAIN 24 (PHASE 2)
 OF THE
WAR INDUSTRIES SEWER

IN
THE CITY OF WICHITA,
 SEDGWICK COUNTY, KANSAS
 MICHAEL E. LINDEBAK, P.E. - CITY ENGINEER



LOCATION MAP

INDEX OF SHEETS

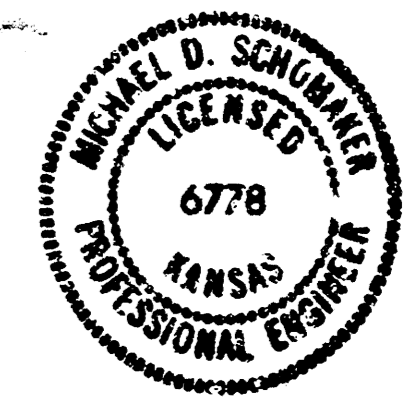
SHEET NO. 1	TITLE SHEET
SHEET NO. 2	KEY MAP
SHEET NO. 3	EASEMENT GRADING
SHEET NO. 4-5	PLAN
SHEET NO. 6-13	PLAN/PROFILE
SHEET NO. 14	TYPE "P" MANHOLE DETAILS
SHEET NO. 15	TYPE "D" MANHOLE DETAILS
SHEET NO. 16	TYPE "C" MANHOLE DETAILS
SHEET NO. 17	FRAME & COVER DETAIL
SHEET NO. 18	RISER DETAILS

CITY OF WICHITA PROJECT NO. 468-76-245-81807-000-000-001

JANUARY, 1988

PLANS PREPARED BY
PROFESSIONAL ENGINEERING CONSULTANTS, P.A.
 ENGINEERS
 WICHITA, KANSAS

THESE PLANS REVISED
 APRIL 11, 1988 PER
 ADDENDUM NO. 1
 (SHEETS 1, 2, 3, 6, 7, 11,
 12 AND 13)



*BUILT AS PER PLAN
 12-88
 ROL*

C.C. - CROSS CREEK C.W. - COUNTRY WALK

RISER LOCATION TABLE

NO.	LINE NO.	STATION	BLOCK NO.	LOT NO.	DIRECTION	# RISER PIPE
1	1	3+92	1-C.C.	1	LI.	6.8
2	1	5+21	1-C.C.	2	LI.	7.0
3	1	6+70	1-C.C.	3	LI.	8.0
4	1	9+55	2-C.W.	7	LI.	9.3
5	1	10+38	2-C.W.	6	LI.	10.3
6	1	14+33	3-C.W.	8	RI.	3.5
7	1	14+38	3-C.W.	27	LI.	3.5
8	1	14+82	3-C.W.	28	LI.	3.5
9	1	15+73	3-C.W.	7	RI.	4.0
10	1	15+80	3-C.W.	6	RI.	4.5
11	1	16+60	3-C.W.	5	RI.	3.0
12	DELETED PER ADDENDUM NO. 1					
13	DELETED PER ADDENDUM NO. 1					
14	DELETED PER ADDENDUM NO. 1					
15	DELETED PER ADDENDUM NO. 1					
16	2	1+13	2-C.C.	3	LI.	3.3
17	2	2+25	2-C.C.	4	LI.	2.0
18	6	1+67	1-C.C.	4	LI.	3.0
19	6	2+10	1-C.C.	5	LI.	2.0
20	7	0+42	2-C.W.	22	LI.	7.5
21	7	0+73	2-C.W.	8	RI.	7.5
22	7	0+95	2-C.W.	9	LI.	8.0
23	7	2+00	2-C.W.	21	RI.	9.0
24	7	2+34	2-C.W.	10	RI.	9.0
25	7	2+64	2-C.W.	11	RI.	9.0
26	7	3+47	2-C.W.	12	RI.	9.5
27	7	3+65	2-C.W.	20	LI.	9.5
28	7	3+82	2-C.W.	14	RI.	8.5
29	7	4+47	2-C.W.	19	LI.	8.0
30	7	4+86	2-C.W.	15	RI.	6.0
31	7	6+05	2-C.W.	16	RI.	4.0
32	7	7+73	2-C.W.	5	LI.	3.5
33	8	0+15	2-C.W.	4	LI.	3.5
34	8	1+00	2-C.W.	3	LI.	4.5
35	8	2+60	2-C.W.	2	LI.	5.0
36	8	0+58	3-C.W.	9	LI.	11.0
37	9	0+77	3-C.W.	10	LI.	10.5
38	9	1+41	3-C.W.	26	RI.	10.0
39	9	1+58	3-C.W.	11	LI.	9.5
40	9	2+27	3-C.W.	12	LI.	9.5
41	9	2+90	3-C.W.	25	RI.	8.0
42	9	3+75	3-C.W.	24	RI.	2.5
43	9	3+85	3-C.W.	21	LI.	2.5
44	9	0+30	3-C.W.	20	RI.	6.5
46	10	0+63	3-C.W.	13	LI.	4.0
47	10	2+05	3-C.W.	14	LI.	4.0
48	10	2+10	3-C.W.	19	RI.	4.0
49	10	2+55	3-C.W.	15	LI.	3.0
50	10	3+21	3-C.W.	16	LI.	2.0
51	11	0+15	3-C.W.	4	RI.	4.0
52	11	6+78	3-C.W.	29	LI.	3.5
53	11	1+10	3-C.W.	3	RI.	3.0
54	DELETED PER ADDENDUM NO. 1					

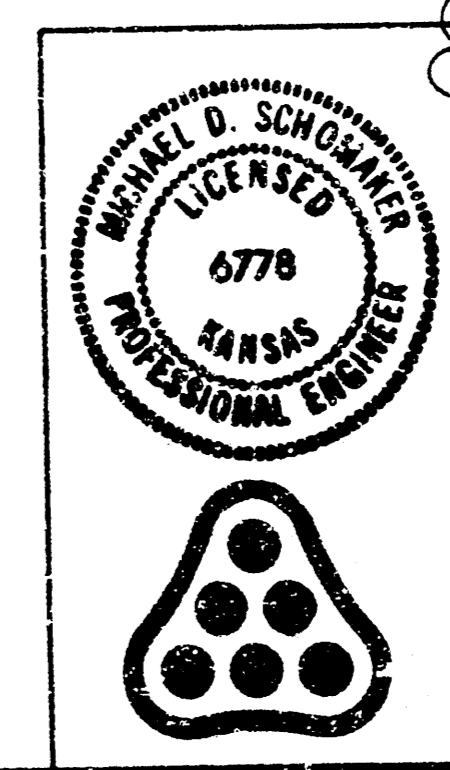
55	1	3+86	1-C.C. End	1	RI. N	5.5
56	1	4+86	1-C.C. End	2	RI. N	7.0
57	1	5+96	1-C.C. End	3	RI. N	8.0
58	1	7+06	1-C.C. End	4	RI. N	9.0
59	8	0+25	1-C.C. End	5	RI. E	3.5
60	8	0+51	1-C.C. End	6	RI. E	3.5
61	8	1+62	1-C.C. End	7	RI. E	4.5

C.C. End - Cross Creek End

MANHOLE NO'S. 11, 12, 40, 41, 42 AND 43 HAVE BEEN DELETED

THIS SHEET REVISED APRIL 11, 1986 PER ADDENDUM NO. 1

LEGEND
-Phase 2 Work



1 Added Riser Nos 55 thru 61

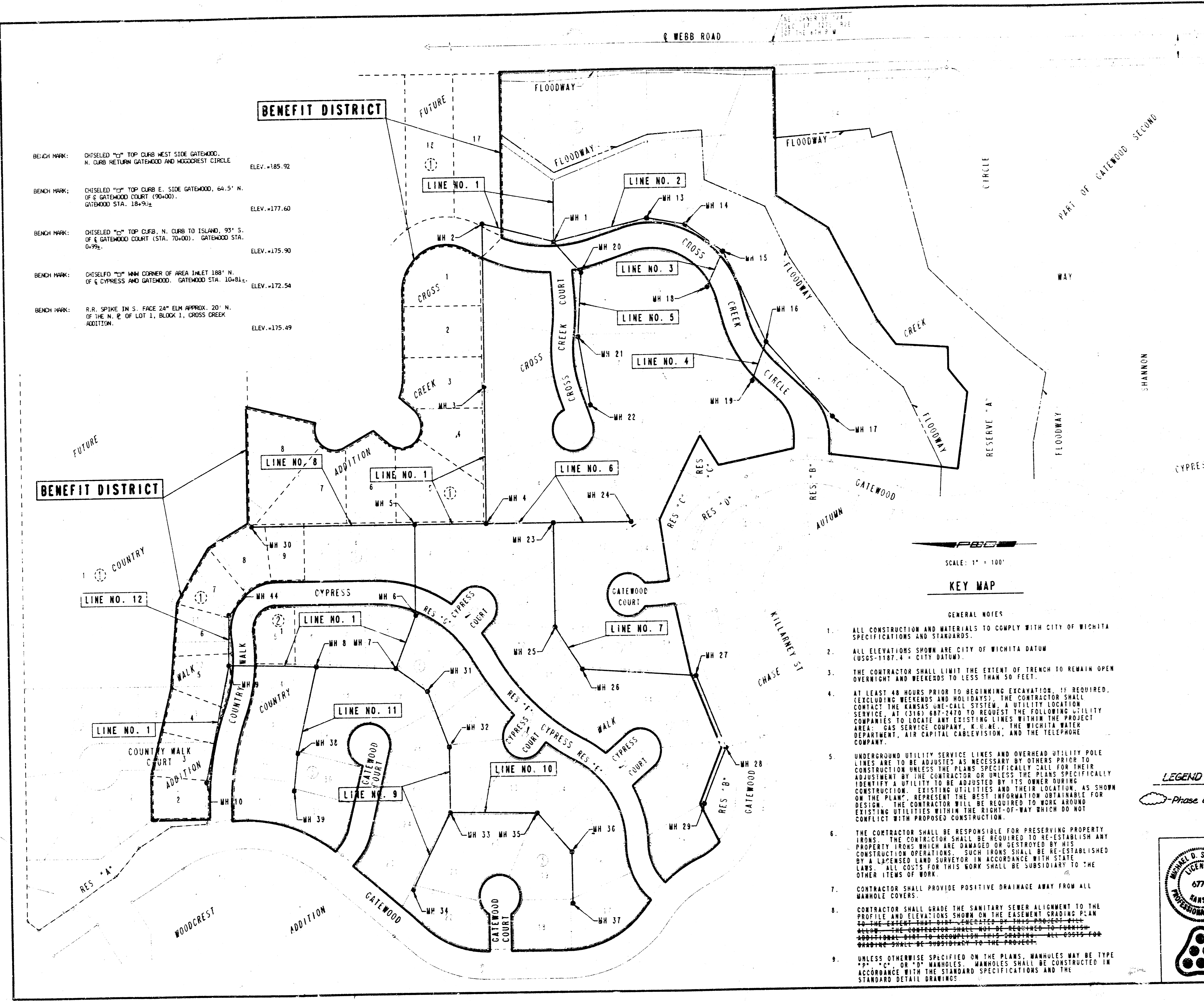
LATERAL 13, MAIN 24 OF THE WAR INDUSTRIES SEWER

KEY MAP

MICHAEL E. LINDBERAK, P.E. - CITY ENGINEER
CITY OF WICHITA PROJECT NO. 468-76-245-81807-000-000

PROFESSIONAL ENGINEERING CONSULTANTS, P.A.
ENGINEERS
WICHITA, KANSAS

Designed by RUS, CRT Job No. 34-87440-2 Sht. 2 of 18
Drawn by DRN, CH Date JANUARY, 1986

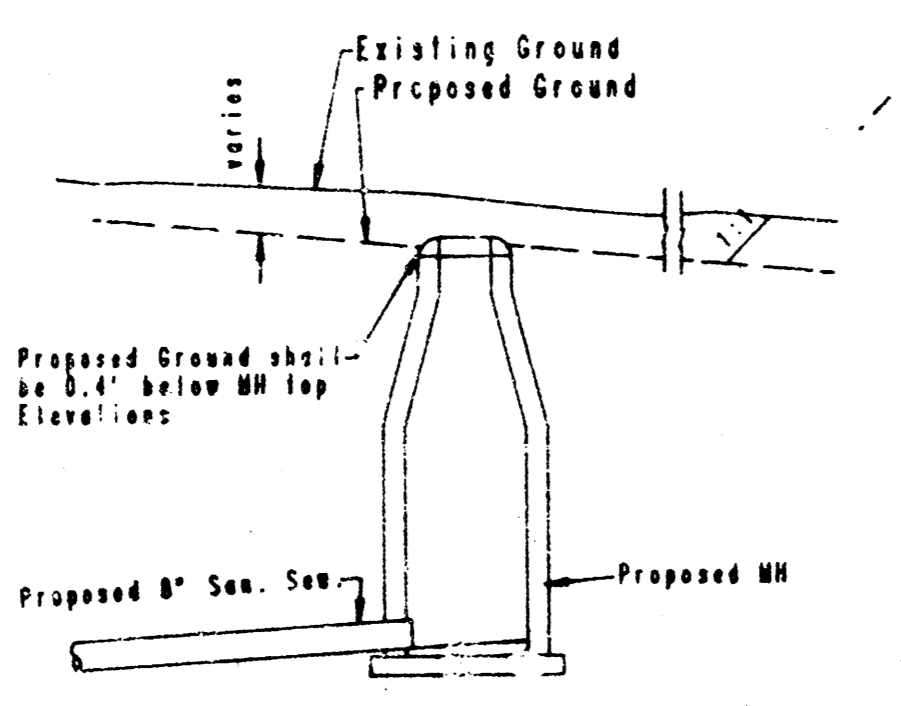
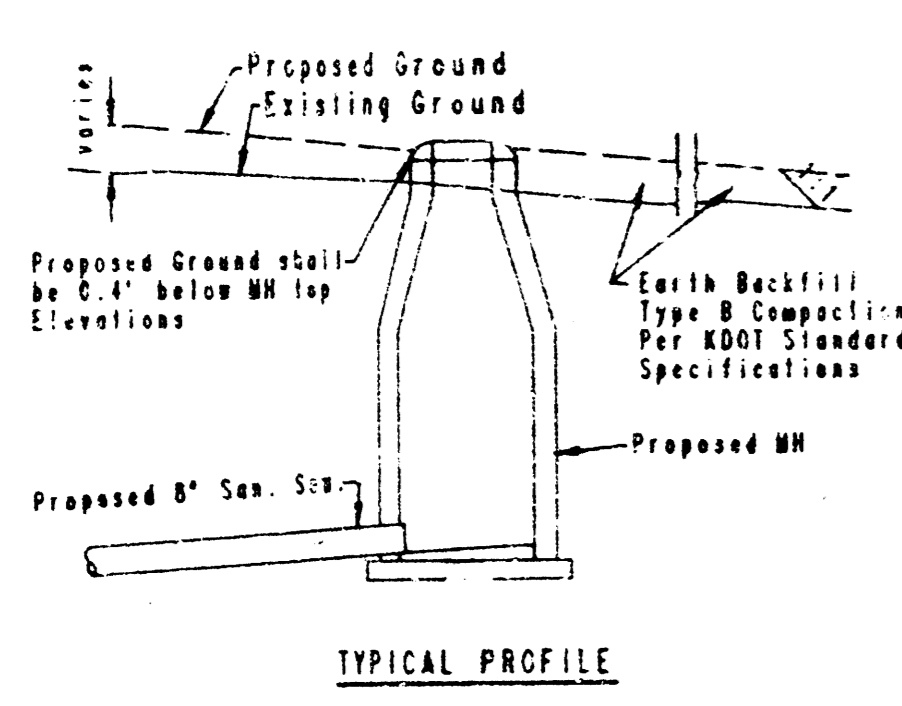
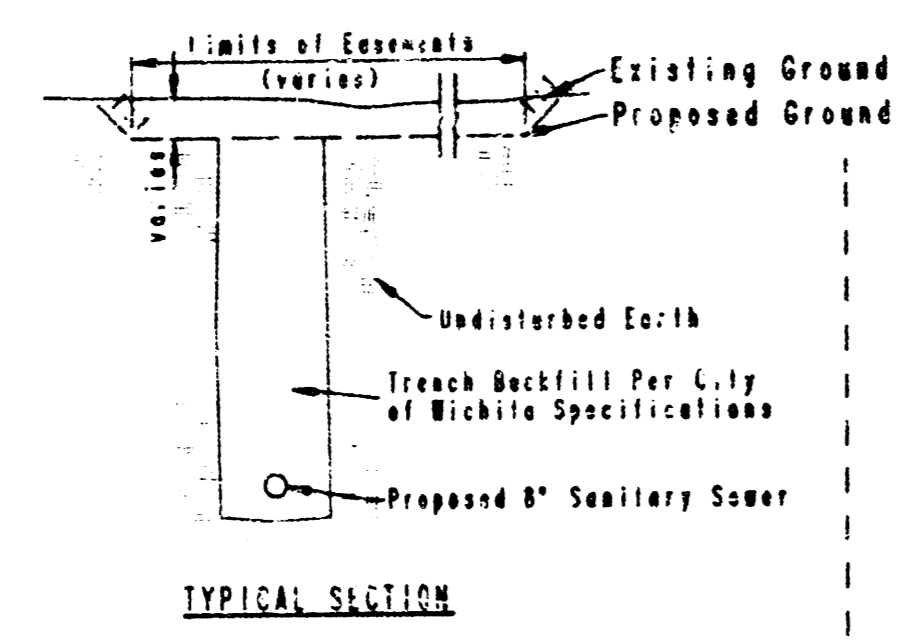
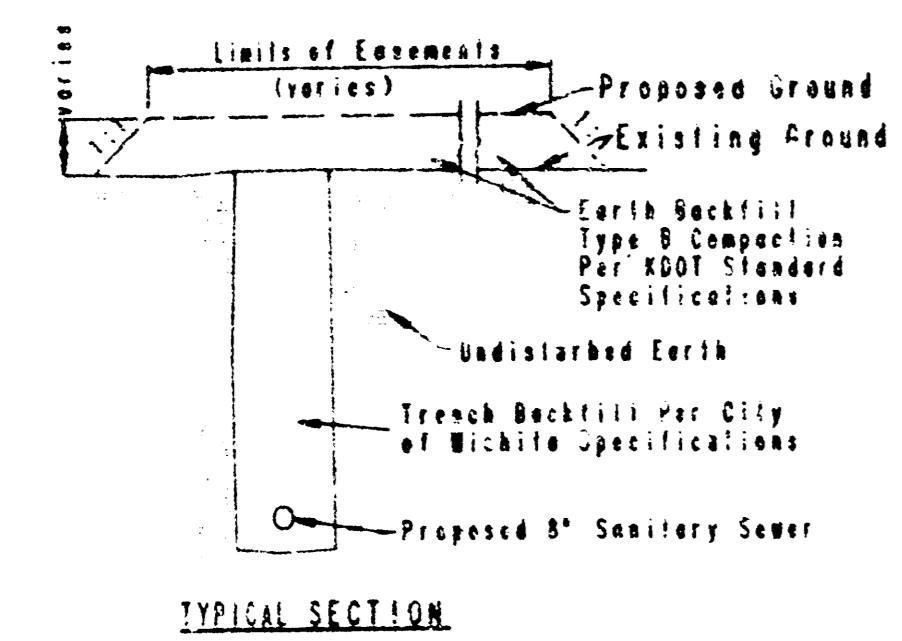


SCALE: 1" = 100'

KEY MAP

GENERAL NOTES

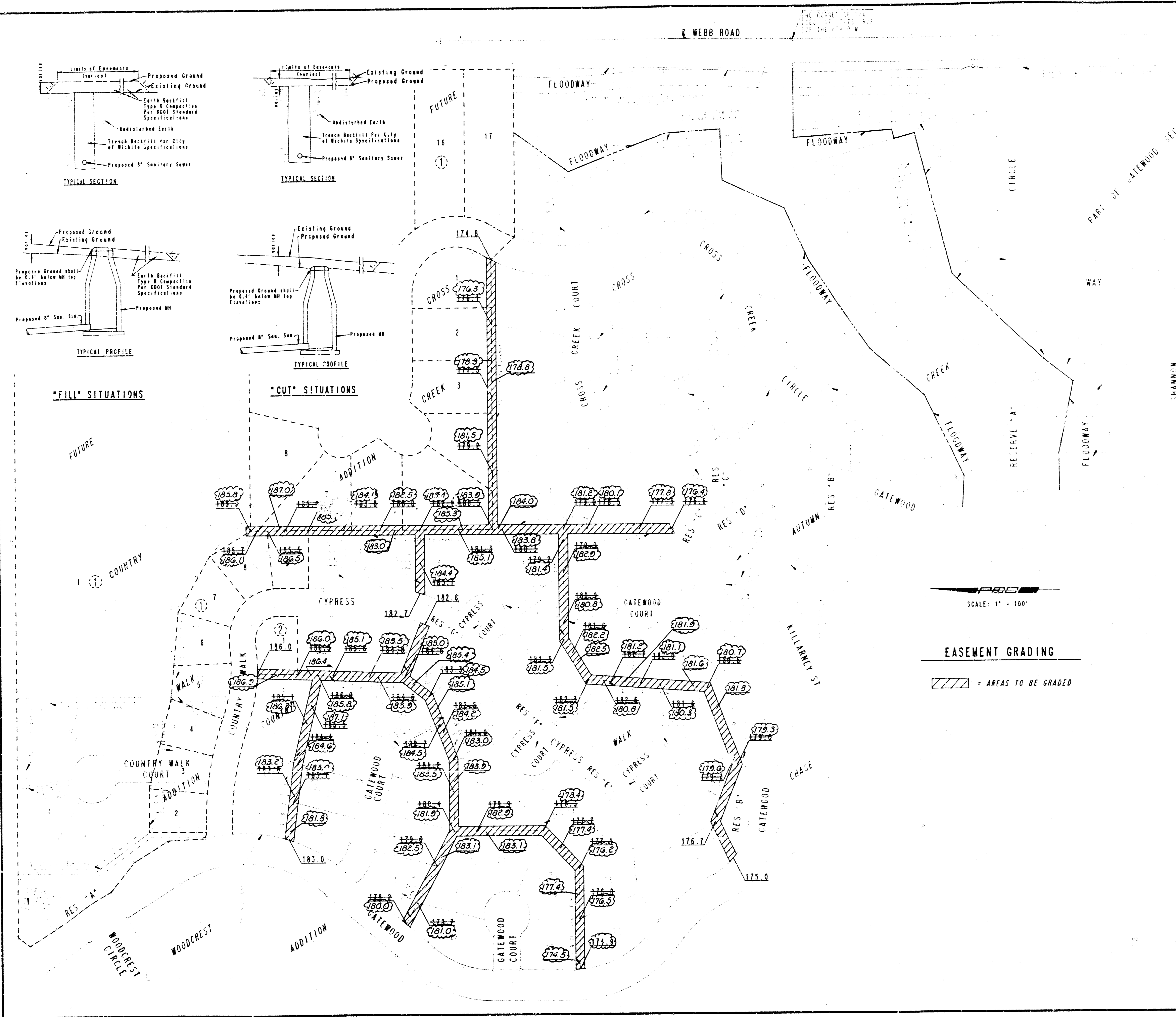
- ALL CONSTRUCTION AND MATERIALS TO COMPLY WITH CITY OF WICHITA SPECIFICATIONS AND STANDARDS.
- ALL ELEVATIONS SHOWN ARE CITY OF WICHITA DATUM (USGS-1187.4 - CITY DATUM).
- THE CONTRACTOR SHALL LIMIT THE EXTENT OF TRENCH TO REMAIN OPEN OVERNIGHT AND WEEKENDS TO LESS THAN 50 FEET.
- AT LEAST 48 HOURS PRIOR TO BEGINNING EXCAVATION, IF REQUIRED, (EXCLUDING WEEKENDS AND HOLIDAYS), THE CONTRACTOR SHALL CONTACT THE KANSAS ONE-CALL SYSTEM, A UTILITY LOCATION SERVICE, AT (316) 687-2470 TO REQUEST THE FOLLOWING UTILITY COMPANIES TO LOCATE ANY EXISTING LINES WITHIN THE PROJECT AREA: GAS SERVICE COMPANY, K.H.A.E., THE WICHITA WATER DEPARTMENT, AIR CAPITAL CABLEVISION, AND THE TELEPHONE COMPANY.
- UNDERGROUND UTILITY SERVICE LINES AND OVERHEAD UTILITY POLE LINES ARE TO BE ADJUSTED AS NECESSARY BY OTHERS PRIOR TO CONSTRUCTION UNLESS THE PLANS SPECIFICALLY CALL FOR THEIR ADJUSTMENT BY THE CONTRACTOR OR UNLESS THE PLANS SPECIFICALLY IDENTIFY A UTILITY TO BE ADJUSTED BY ITS OWNER DURING CONSTRUCTION. EXISTING UTILITIES AND THEIR LOCATION, AS SHOWN ON THE PLANS, REPRESENT THE BEST INFORMATION OBTAINABLE FOR DESIGN. THE CONTRACTOR WILL BE REQUIRED TO WORK AROUND EXISTING UTILITIES WITHIN THE RIGHT-OF-WAY WHICH DO NOT CONFLICT WITH PROPOSED CONSTRUCTION.
- THE CONTRACTOR SHALL BE RESPONSIBLE FOR PRESERVING PROPERTY IRONS. THE CONTRACTOR SHALL BE REQUIRED TO RE-ESTABLISH ANY PROPERTY IRONS WHICH ARE DAMAGED OR DESTROYED BY HIS CONSTRUCTION OPERATIONS. SUCH IRONS SHALL BE RE-ESTABLISHED BY A LICENSED LAND SURVEYOR IN ACCORDANCE WITH STATE LAWS. ALL COSTS FOR THIS WORK SHALL BE SUBSIDIARY TO THE OTHER ITEMS OF WORK.
- CONTRACTOR SHALL PROVIDE POSITIVE DRAINAGE AWAY FROM ALL MANHOLE COVERS.
- CONTRACTOR SHALL GRADE THE SANITARY SEWER ALIGNMENT TO THE PROFILE AND ELEVATIONS SHOWN ON THE EASEMENT GRADING PLAN ~~AND THE ELEVATIONS SHOWN ON THIS PROJECT WILL ALLOW THE CONTRACTOR SHALL NOT BE REQUIRED TO FURNISH ADDITIONAL DATA TO ACCOMPLISH THIS GRADING. ALL COSTS FOR GRADING SHALL BE SUBSIDIARY TO THE PROJECT.~~
- UNLESS OTHERWISE SPECIFIED ON THE PLANS, MANHOLES MAY BE TYPE "A", "C", OR "D" MANHOLES. MANHOLES SHALL BE CONSTRUCTED IN ACCORDANCE WITH THE STANDARD SPECIFICATIONS AND THE STANDARD DETAIL DRAWINGS.



"FILL" SITUATIONS

"CUT" SITUATIONS

REVISED MANHOLE TOP ELEVATIONS				
M.H. #	Plan Elev.	Rev. Elev.	Raise	Lower
3	177.9	178.9	1.0'	
4	180.8	184.4	3.6'	
5	182.4	183.9	1.5'	
7	184.4	185.4	1.0'	
23	179.3	181.5	2.2'	
26	182.8	181.8		1.0'
31	183.5	185.3	1.8'	
32	182.2	183.5	1.3'	
33	180.9	182.3	1.4'	
34	179.0	181.2	2.2'	
36	177.4	176.6		0.8'
39	184.0	183.2		0.8'



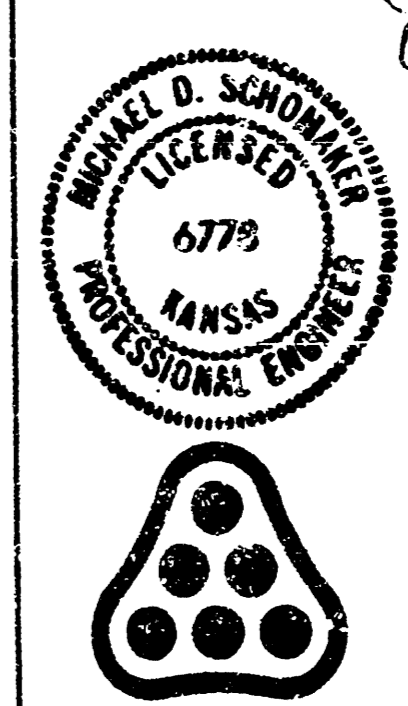
SCALE: 1" = 100'

EASEMENT GRADING

▨ = AREAS TO BE GRADED

THIS SHEET REVISED
APRIL 11, 1988 PER
ADDENDUM NO. 1

2	Added Revised MH Top Elevation Table	GM 7-20-88
1	revised Easement Grading Elevations	GM 7-20-88



LATERAL 13, MAIN 24 OF THE
WAP INDUSTRIES SEWER

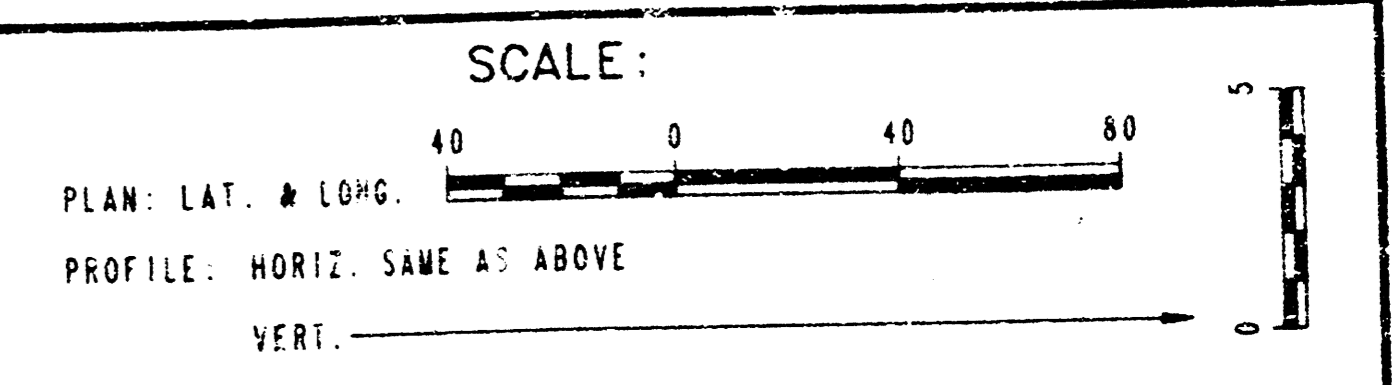
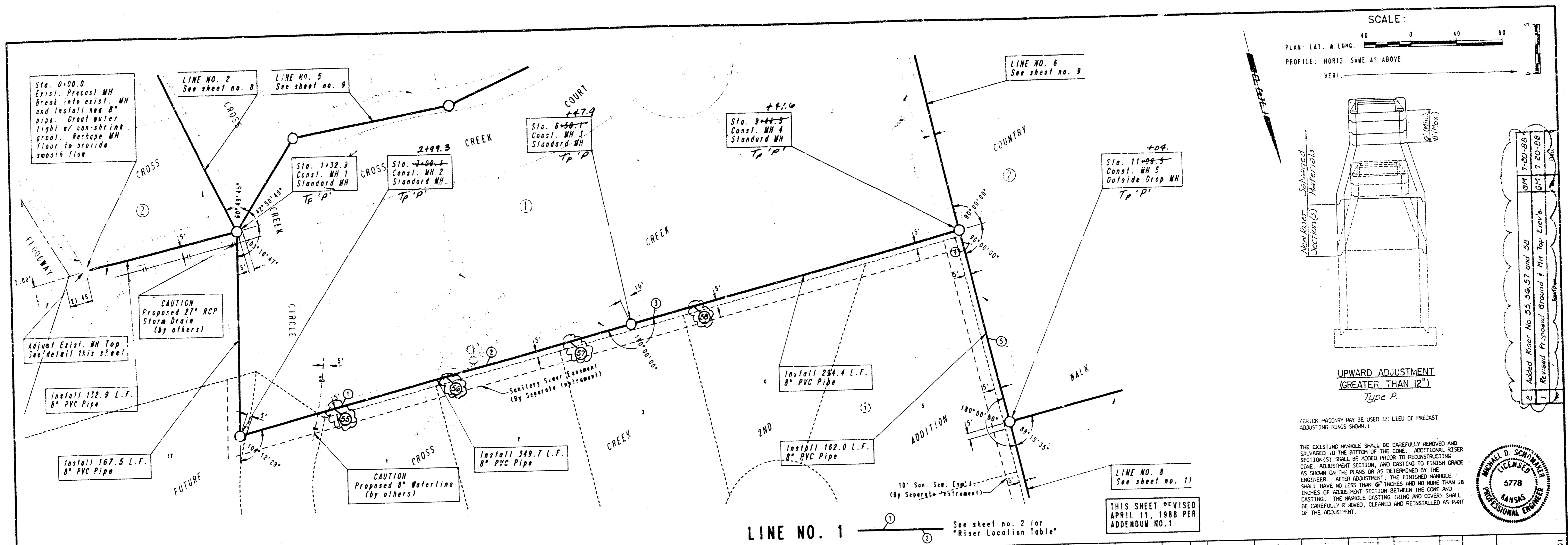
EASEMENT GRADING

MICHAEL E. LINDEBAK, P.E. - C.E. ENGINEER
CITY OF WICHITA PROJECT NO. 468-76-245-81407-000-000-001

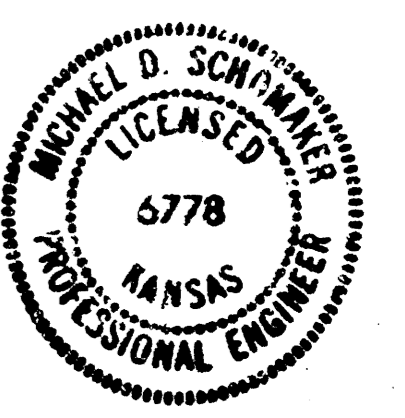
PROFESSIONAL ENGINEERING CONSULTANTS, P.A.
ENGINEERS
WICHITA, KANSAS

Designed by MDS, CRJ Job No. 34-87540-3 Sht. 3 of 18
Drawn by DMW, GM Date JANUARY, 1988

FILMED FROM THE BEST AVAILABLE COPY

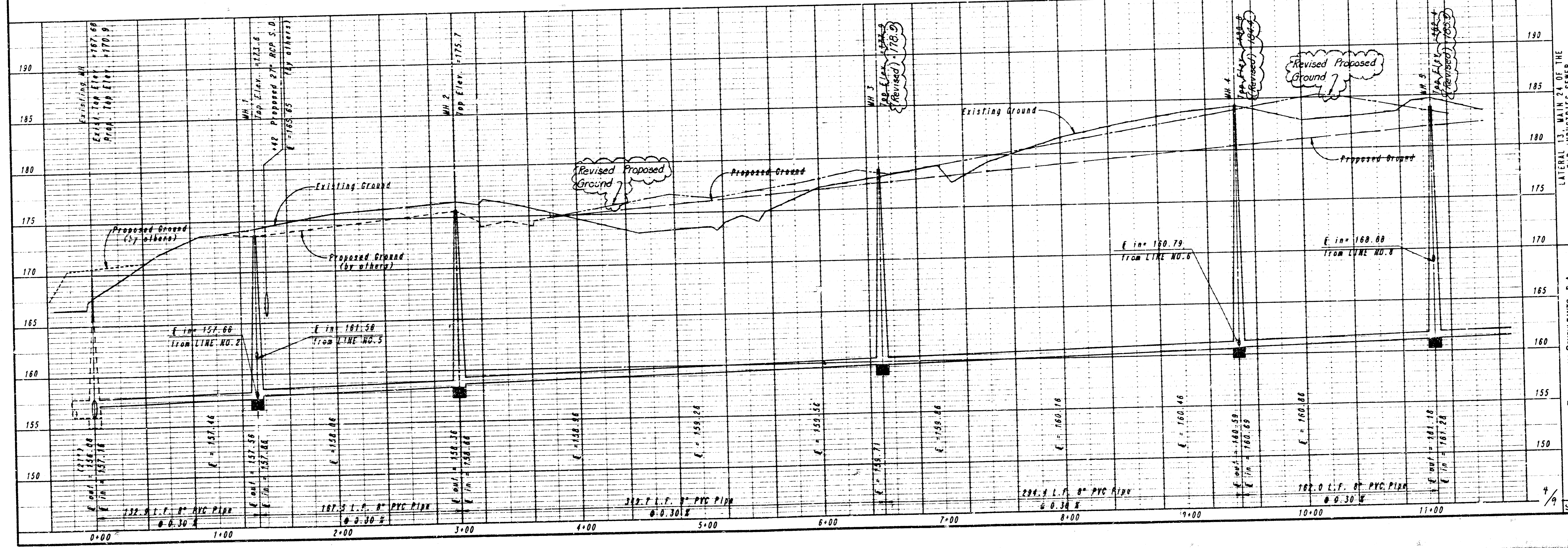


1	Revised Proposed Ground 1 thru Top Elev. 170.0
2	Added Riser No. 55, 56, 57 and 58
3	GM 7-20-88
4	GM 7-20-88



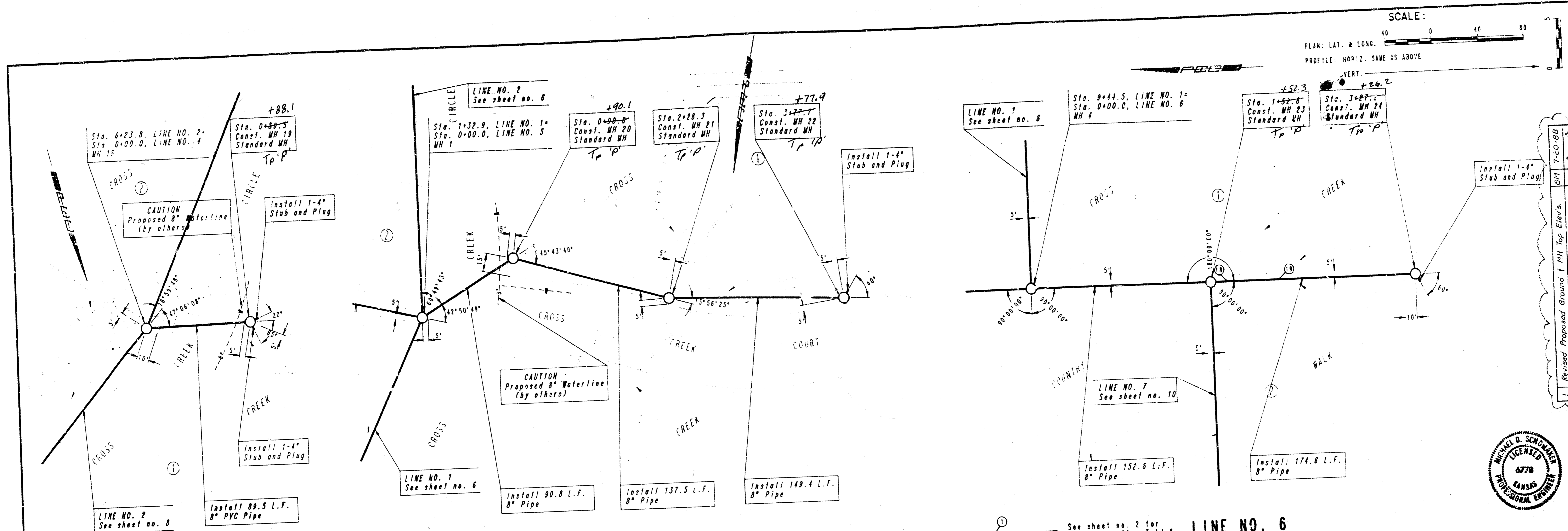
LINE NO. 1 See sheet no. 2 for "Riser Location Table"

THIS SHEET REVISED APRIL 11, 1988 PER APPENDUM NO. 1



PROFESSIONAL ENGINEERING CONSULTANTS, P.A.
 MICHAEL D. SCHWAB, P.E., CITY ENGINEER
 LATERAL 13, MAIN 24 OF THE
 BAR INDUSTRIES SEWER
 CITY OF WICHITA PROJECT NO. 448-16-245-01801-000-030-001
 Job No. 34-8764C-3
 Date JANUARY, 1988
 Drawn By: CMA, GM
 Sheet 6 of 16

FILMED FROM THE BEST AVAILABLE COPY



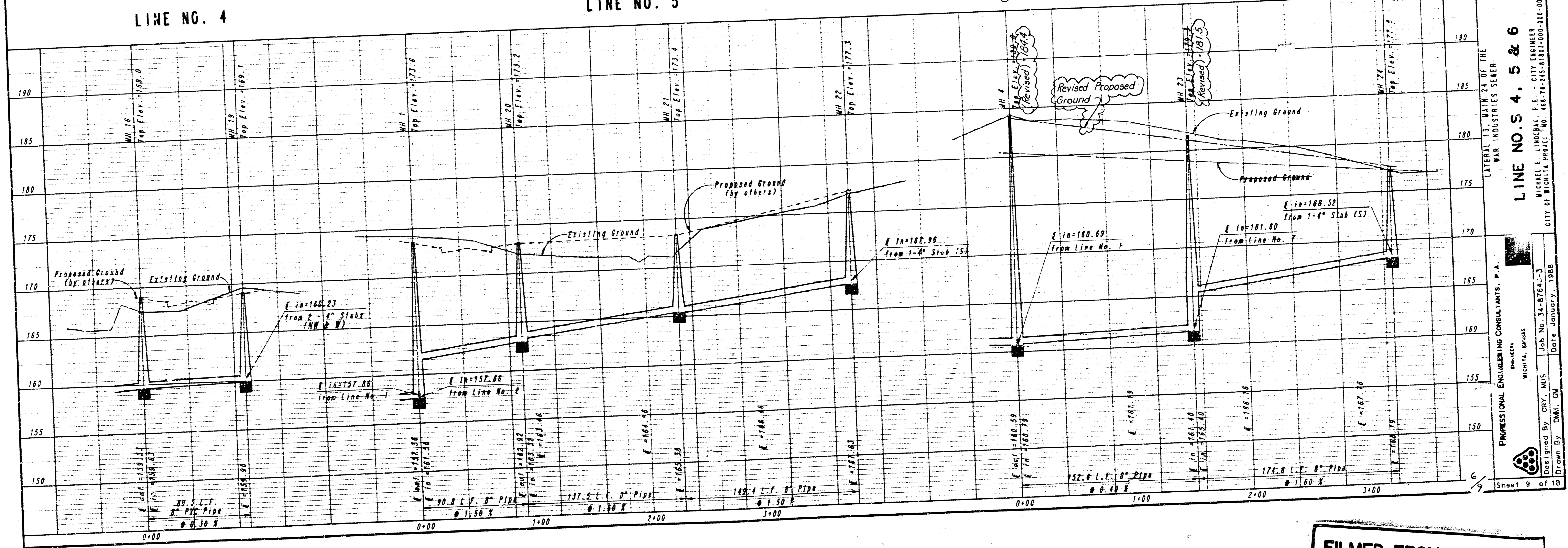
SCALE: 40 0 40 80
 PLAN: LAT. & LONG.
 PROFILE: HORIZ. SAME AS ABOVE
 VERT.



LINE NO. 4

LINE NO. 5

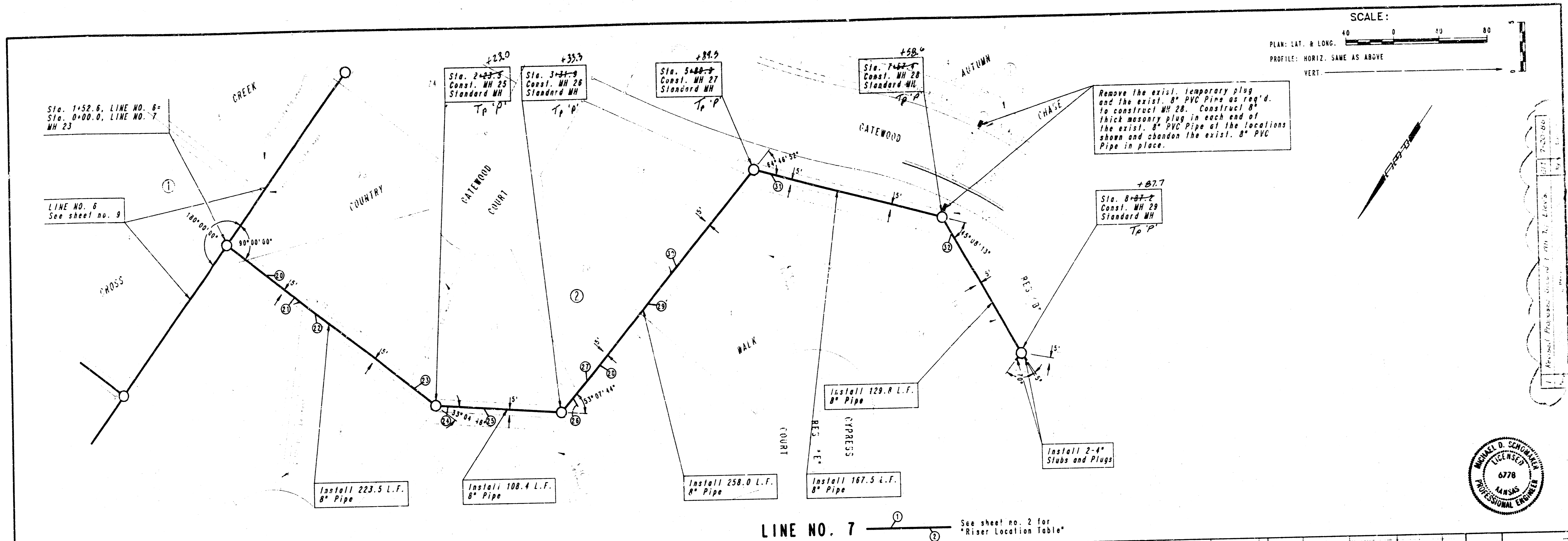
LINE NO. 6



LINE NO. S. 4, 5 & 6
 LATERAL 13, MAIN 24 OF THE
 WAR INDUSTRIES SEWER

PROFESSIONAL ENGINEERING CONSULTANTS, P.A.
 MICHAEL E. LINDBERGH, P.E. - CITY ENGINEER
 CITY OF WICHITA PROJECT NO. 488-78-245-81001-800-000-001
 Designed By: GRV, MDS
 Drawn By: DMX, GM
 Date: January, 1988
 Sheet 9 of 18

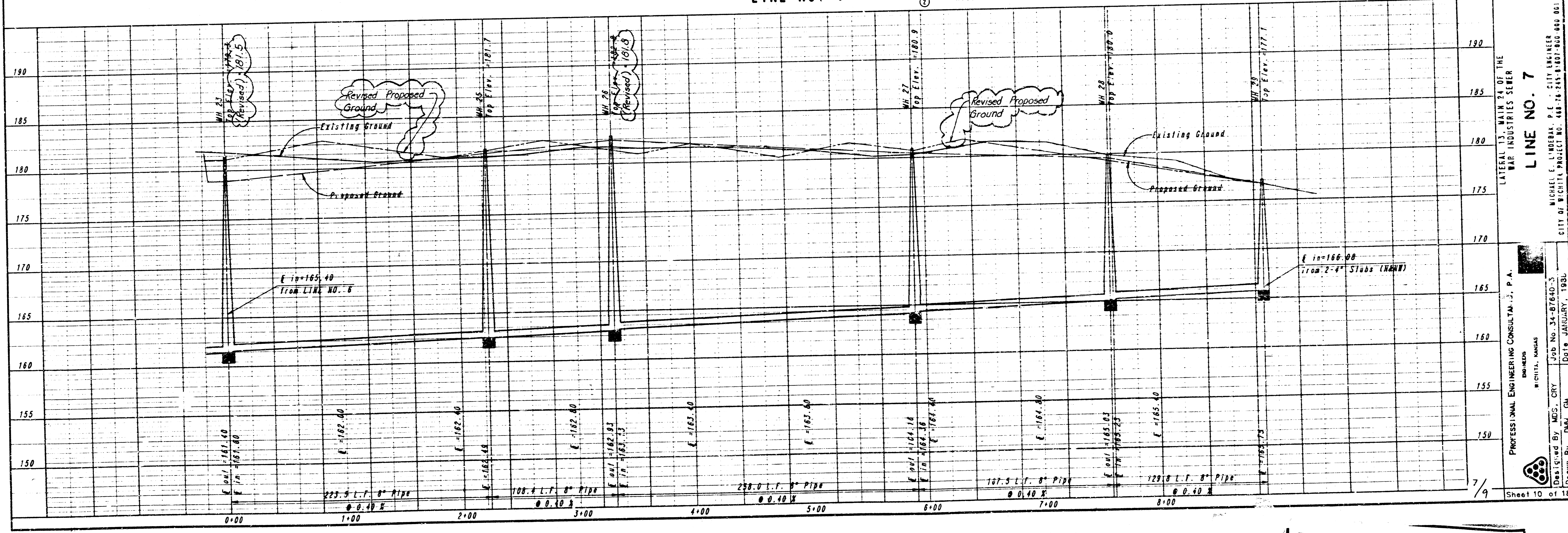
FILMED FROM THE BEST AVAILABLE COPY



SCALE: 40 0 40 80
 PLAN: LAT. & LONG.
 PROFILE: HORIZ. SAME AS ABOVE
 VERT.

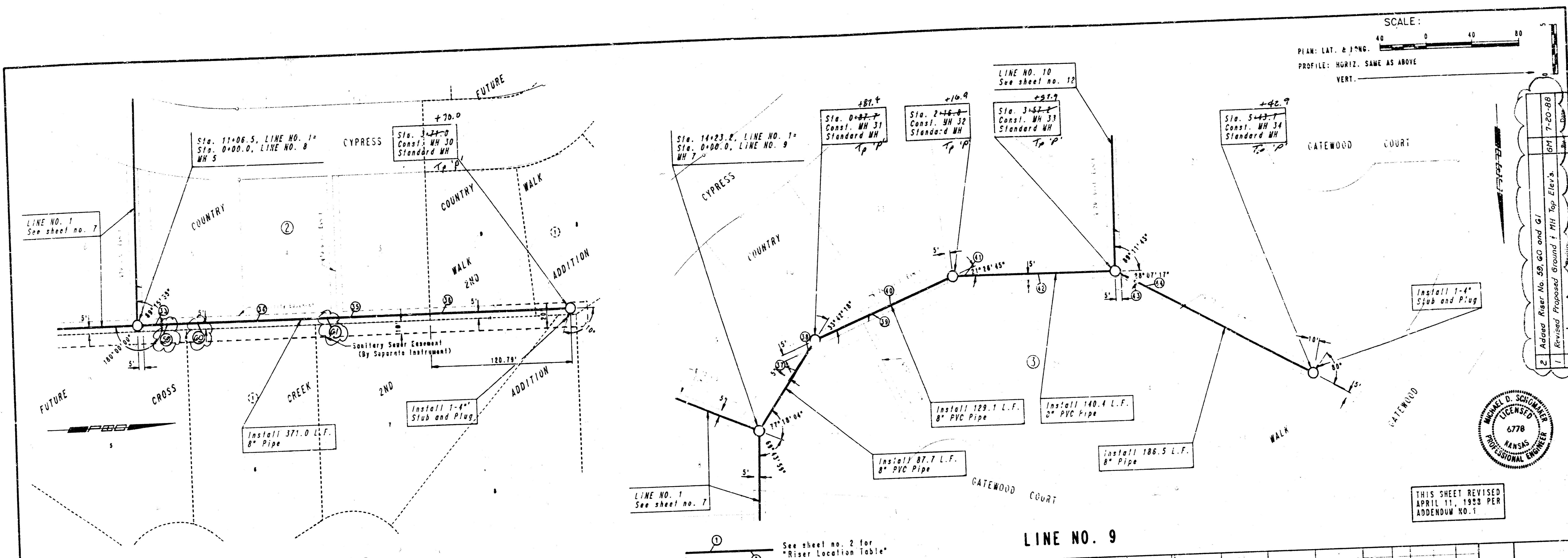


LINE NO. 7 See sheet no. 2 for "Riser Location Table"



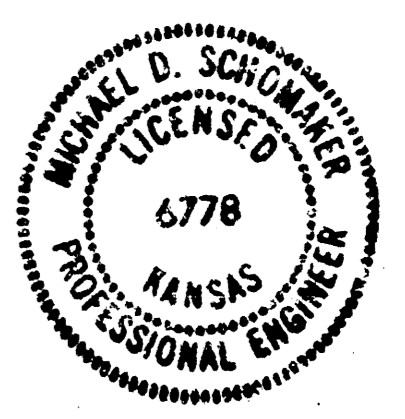
LINE NO. 7
 LATERAL 13, MAIN 24 OF THE
 WAR INDUSTRIES SEWER
 PROFESSIONAL ENGINEERING CONSULTANTS, P.A.
 MICHAEL E. L'AMERAK, P.E. - CITY ENGINEER
 CITY OF WICHITA PROJECT NO. 448-76-245-B101-800-000-001
 Des. by: MDS, CRY Job No. 34-87640-3
 Drawn by: DML, GN Date: JANUARY, 1981

FILMED FROM THE BEST AVAILABLE COPY

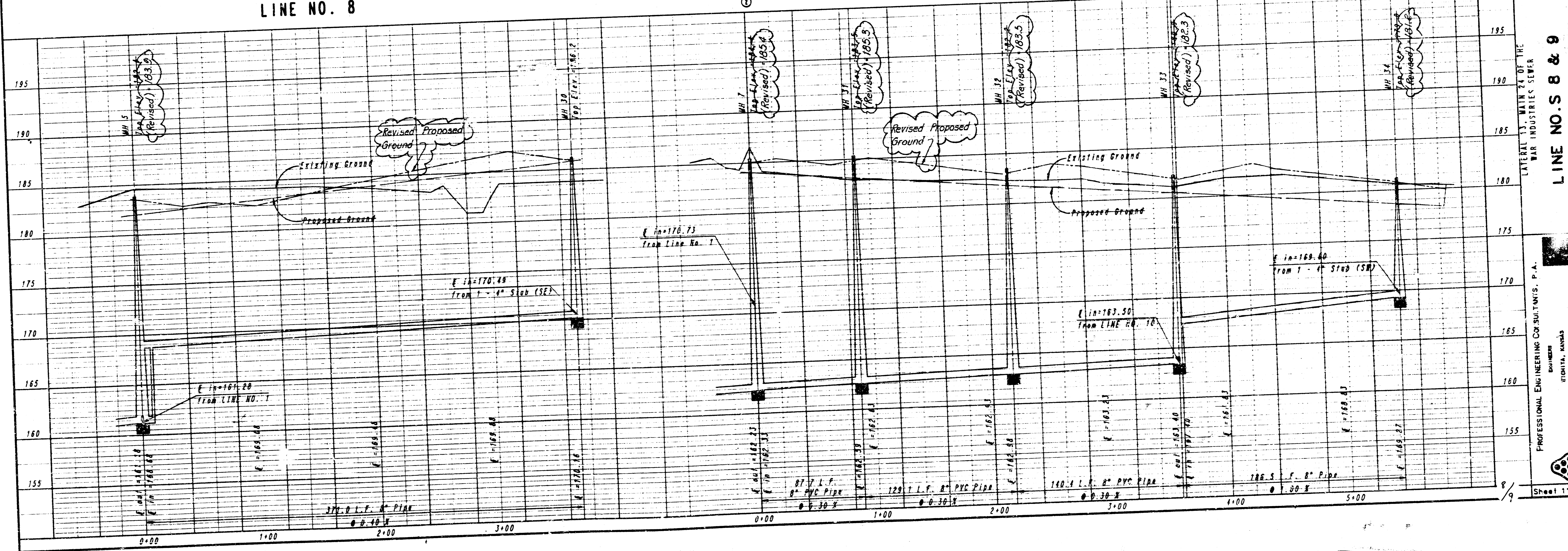


SCALE: 40 0 40 80
 PLAN: LAT. & LONG.
 PROFILE: HORIZ. SAME AS ABOVE
 VERT.

2	Advised Rear No. 59, 60 and 61	GM 7-20-88
1	Revised Proposed Ground & MH Top Elev's.	

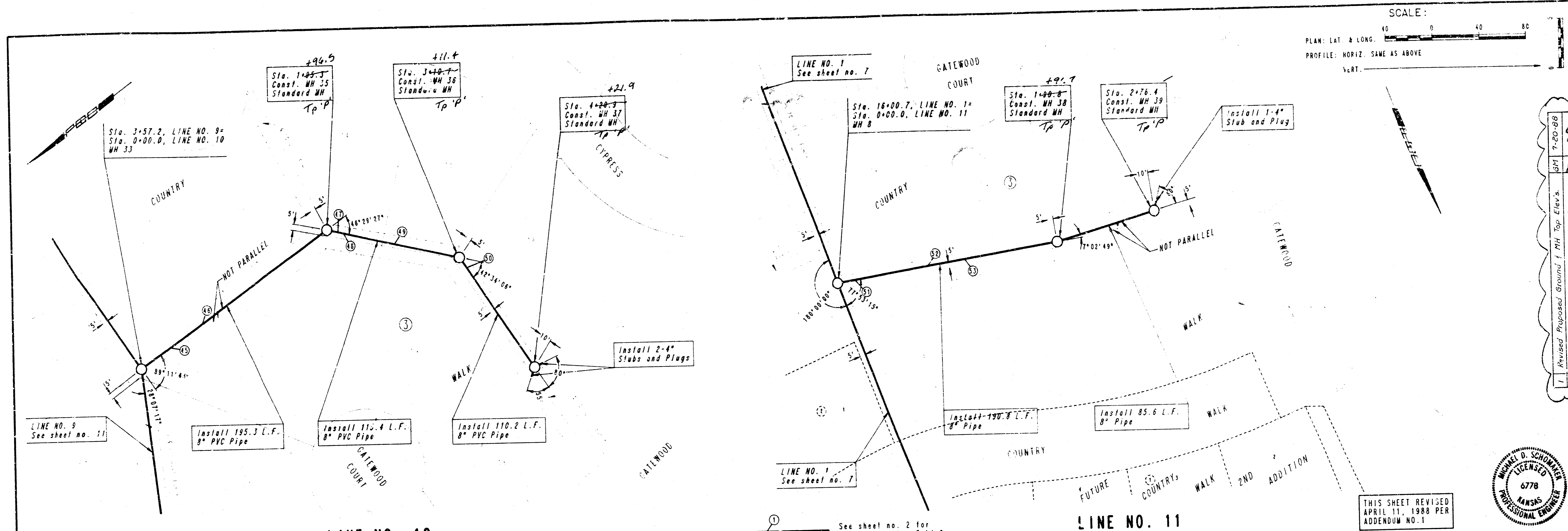


THIS SHEET REVISED
 APRIL 11, 1983 PER
 ADDENDUM NO. 1

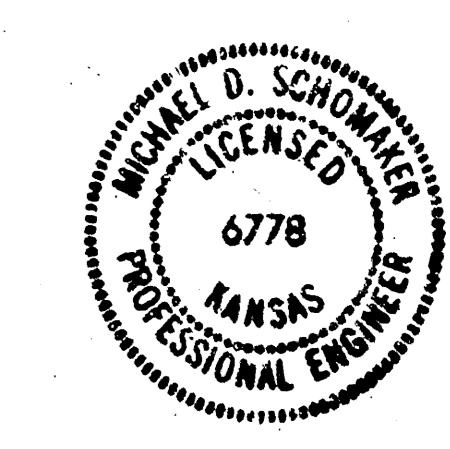


LINE NO. S 8 & 9
 LATERAL TO MAIN 24 OF THE
 WAR INDUSTRIES SEWER
 PROFESSIONAL ENGINEERING CONSULTANTS, P.A.
 ENGINEER
 MICHAEL E. LUDENAK, P.E., CITY ENGINEER
 DESIGNED BY CRY.MDS
 DRAWN BY D.J. GN
 DATE JANUARY, 1988
 SHEET 11 OF 12

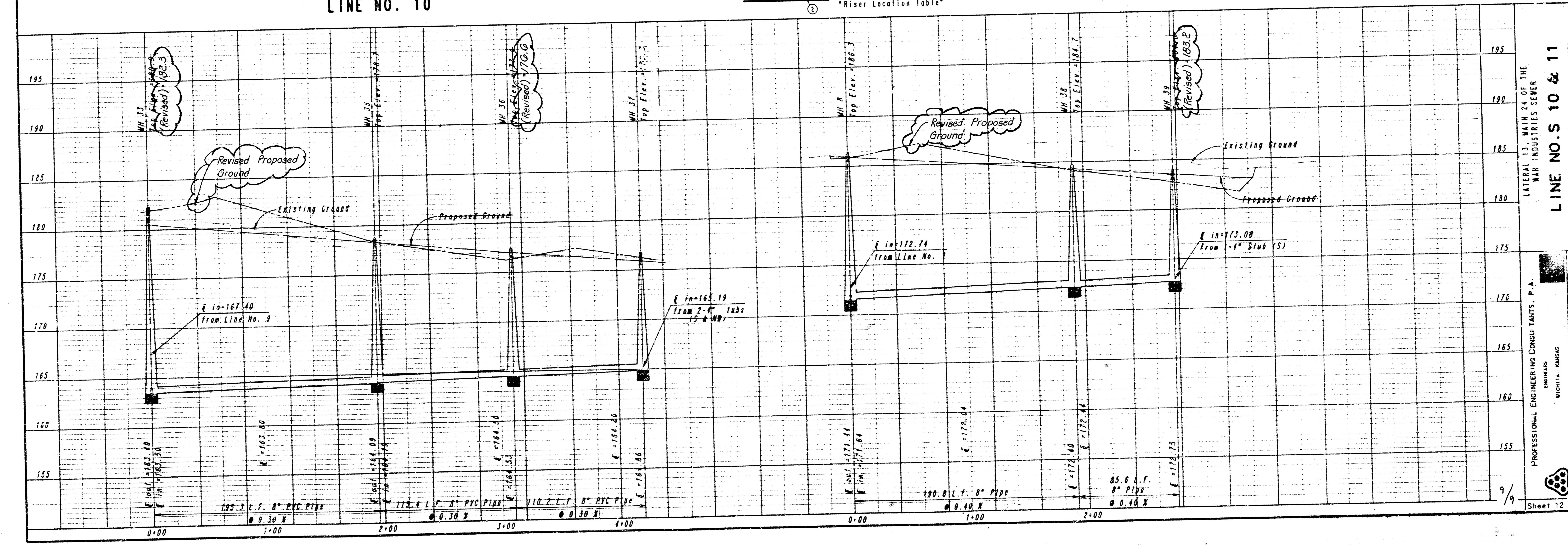
FILMED FROM THE BEST
 AVAILABLE COPY...



SCALE:
 PLAN: LAT & LONG. 1" = 40'
 PROFILE: HORIZ. SAME AS ABOVE
 VERT. 1" = 10'



THIS SHEET REVISED
 APRIL 11, 1988 PER
 ADDENDUM NO. 1



LINE NO. S 10 & 11

LATERAL 13, MAIN 24 OF THE
 WAR INDUSTRIES SEWER
 PROFESSIONAL ENGINEERING CONSULTANTS, P.A.
 ENGINEERS
 WICHITA, KANSAS
 Job No. 24-87640-3
 Designed By MDS, CRY
 Drawn By DMM, GM
 Date JANUARY, 1988
 CITY OF WICHITA PROJECT NO. 445-16-245-11001-000-001
 MICHAEL E. LINDBAK, P.E. - CITY ENGINEER
 7-20-88
 1-1-88
 Revised Proposed Ground
 Existing Ground
 Proposed Ground
 E in 167.40
 From Line No. 9
 E in 163.40
 E in 164.09
 From 2-4" 10SS
 (5' x MH)
 E in 164.53
 E in 164.80
 E in 164.96
 E in 172.44
 From Line No. 1
 E in 172.74
 From Line No. 1
 E in 172.84
 E in 173.08
 From 1-4" Slab (S)
 E in 173.75
 195.3 L.F. 8" PVC PIPE
 0.30 X
 115.4 L.F. 8" PVC PIPE
 0.30 X
 110.2 L.F. 8" PVC PIPE
 0.30 X
 120.8 L.F. 8" Pipe
 0.40 X
 85.6 L.F. 8" Pipe
 0.40 X
 9/9
 Sheet 12 of 18

FILMED FROM THE BEST
 AVAILABLE COPY