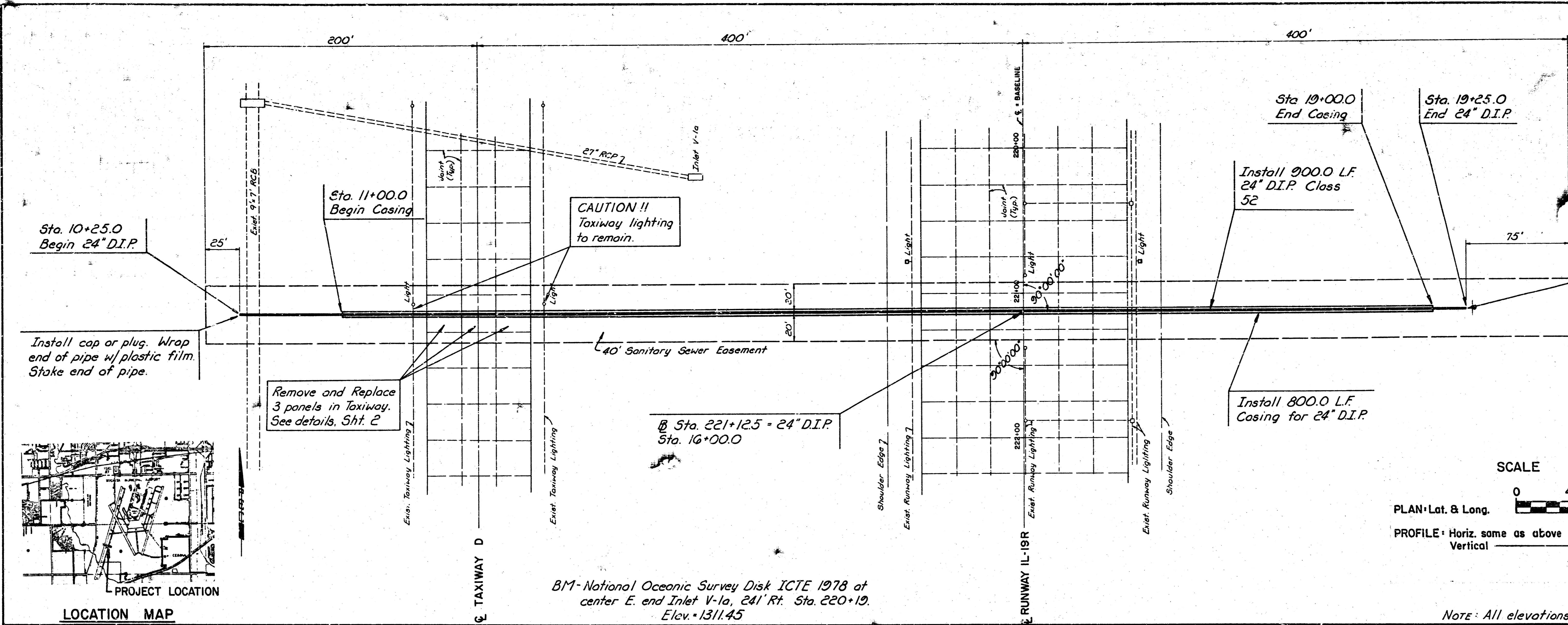
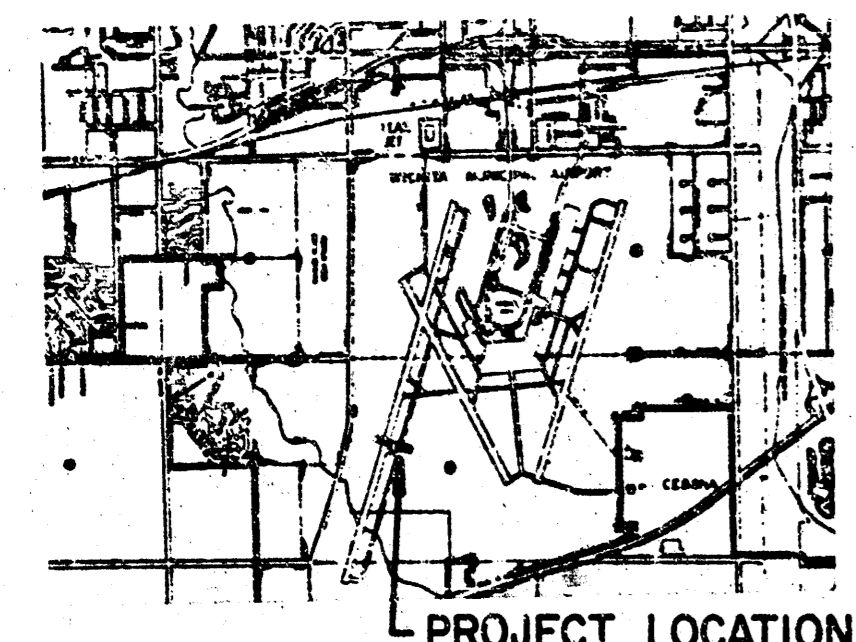


PLAN  
 CHECKED BY: \_\_\_\_\_  
 DATE: \_\_\_\_\_  
 NO. \_\_\_\_\_

PROFILE  
 CHECKED BY: \_\_\_\_\_  
 DATE: \_\_\_\_\_  
 NO. \_\_\_\_\_

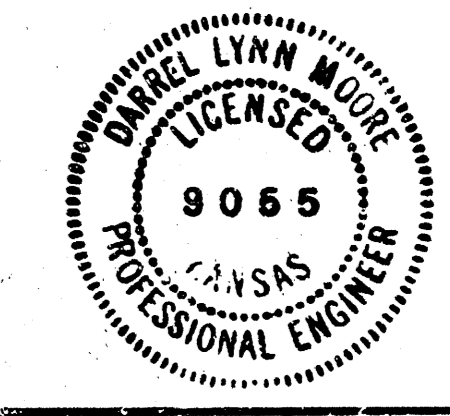
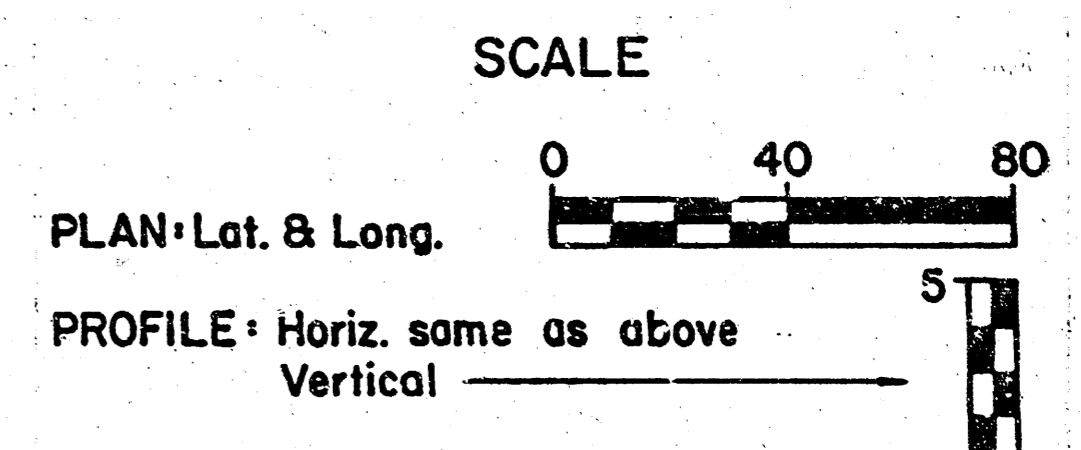


- GENERAL NOTES
1. ALL CONSTRUCTION AND MATERIALS SHALL COMPLY WITH CITY OF WICHITA SPECIFICATIONS AND STANDARD DETAILS EXCEPT AS SPECIFICALLY MODIFIED HEREIN AND IN THE SUPPLEMENTAL SPECIFICATIONS PROVIDED.
  2. BEFORE INSTALLING PIPE, THE CONTRACTOR SHALL EXCAVATE TO DETERMINE THE ELEVATION OF THE TOP OF THE SWS AT STA. 19+25.0. THE CONTRACTOR SHALL REPORT THE ELEVATION TO THE ENGINEER.
  3. THE CONTRACTOR SHALL GRADE, SEED, FERTILIZE AND MOW ALL GRASS AREAS DISTURBED BY HIS OPERATIONS. COSTS FOR GRADING, SEEDING, FERTILIZING AND MOWING SHALL BE CONSIDERED SUBSIDIARY TO THE INSTALLATION OF PIPE.

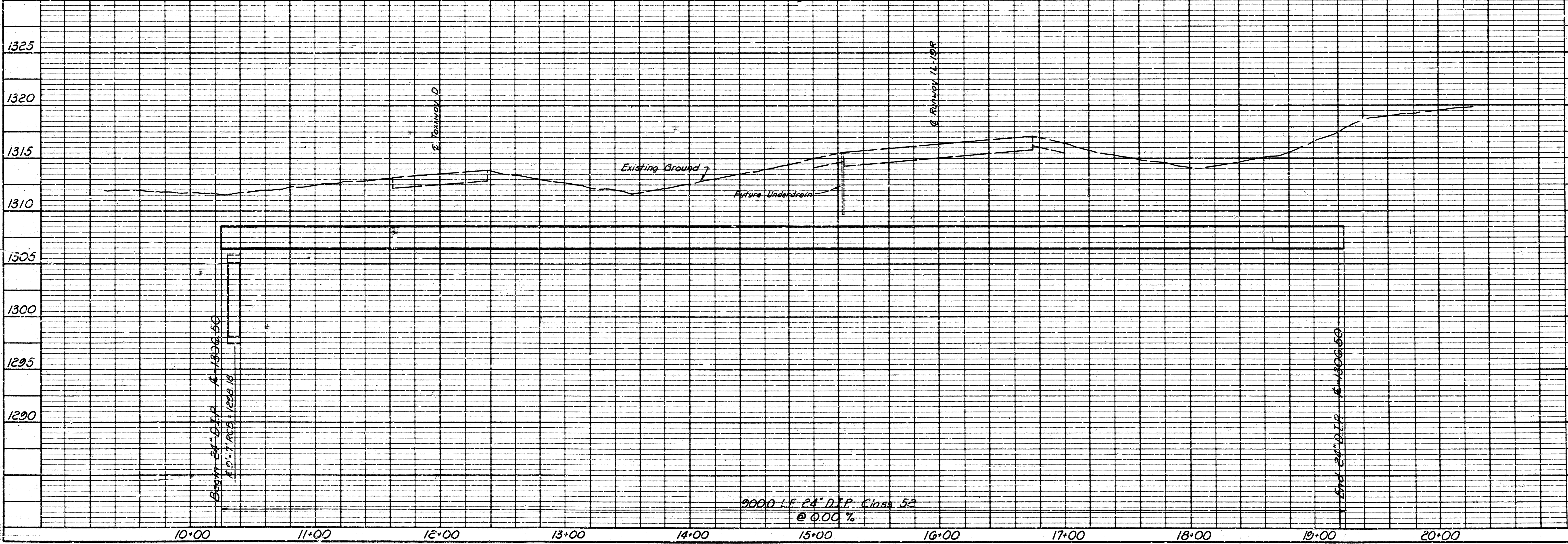


LOCATION MAP

BM-National Oceanic Survey Disk ICTE 1978 at center E. end Inlet V-1a, 241 Rt. Sta. 220+19. Elev. = 1311.45



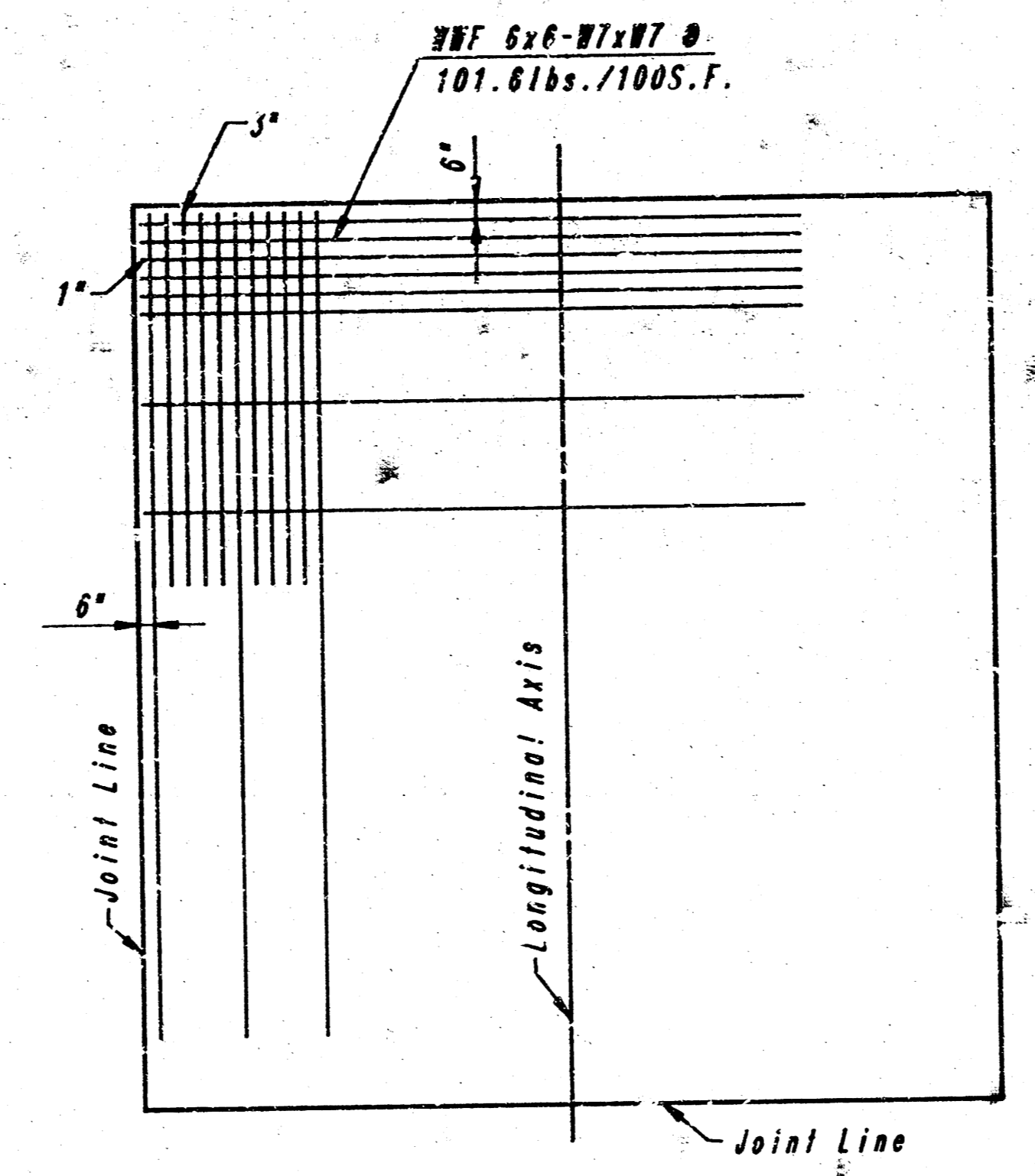
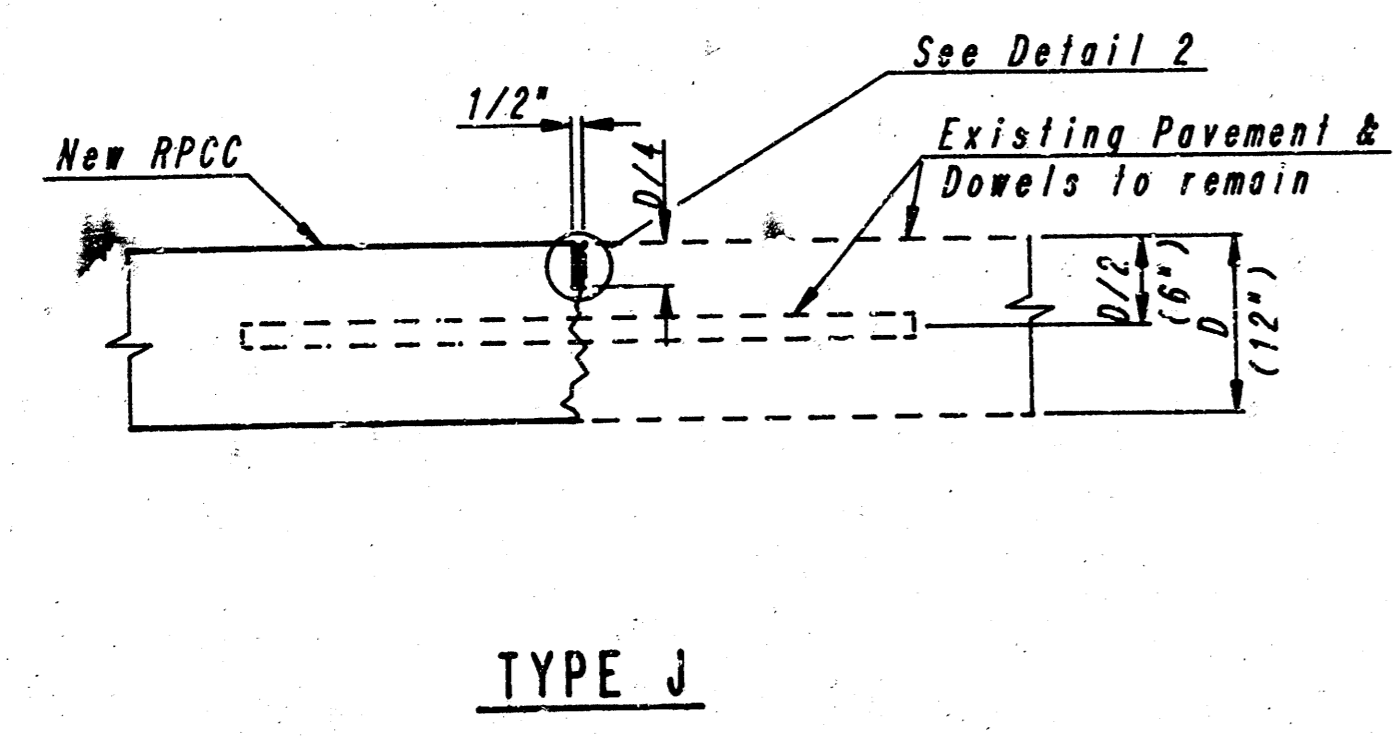
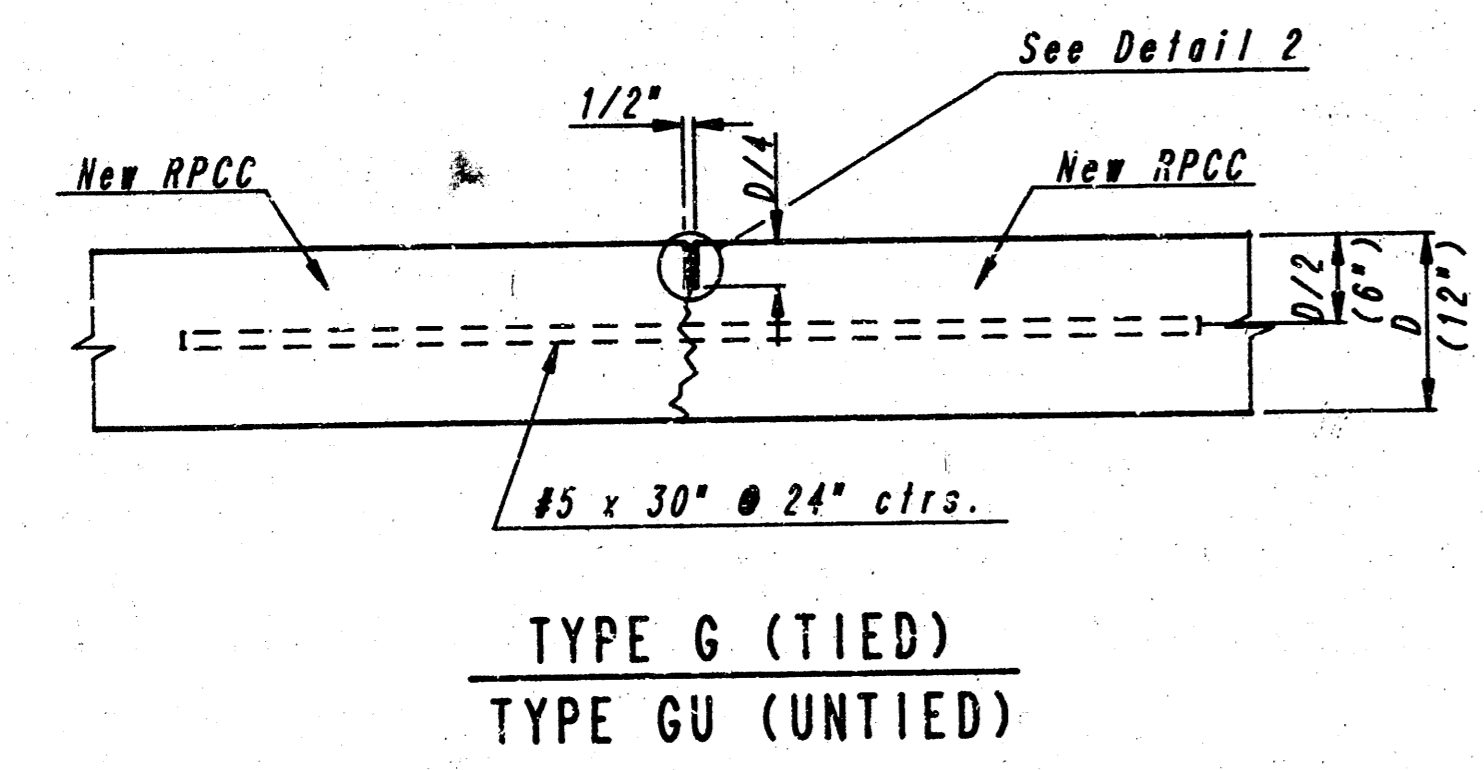
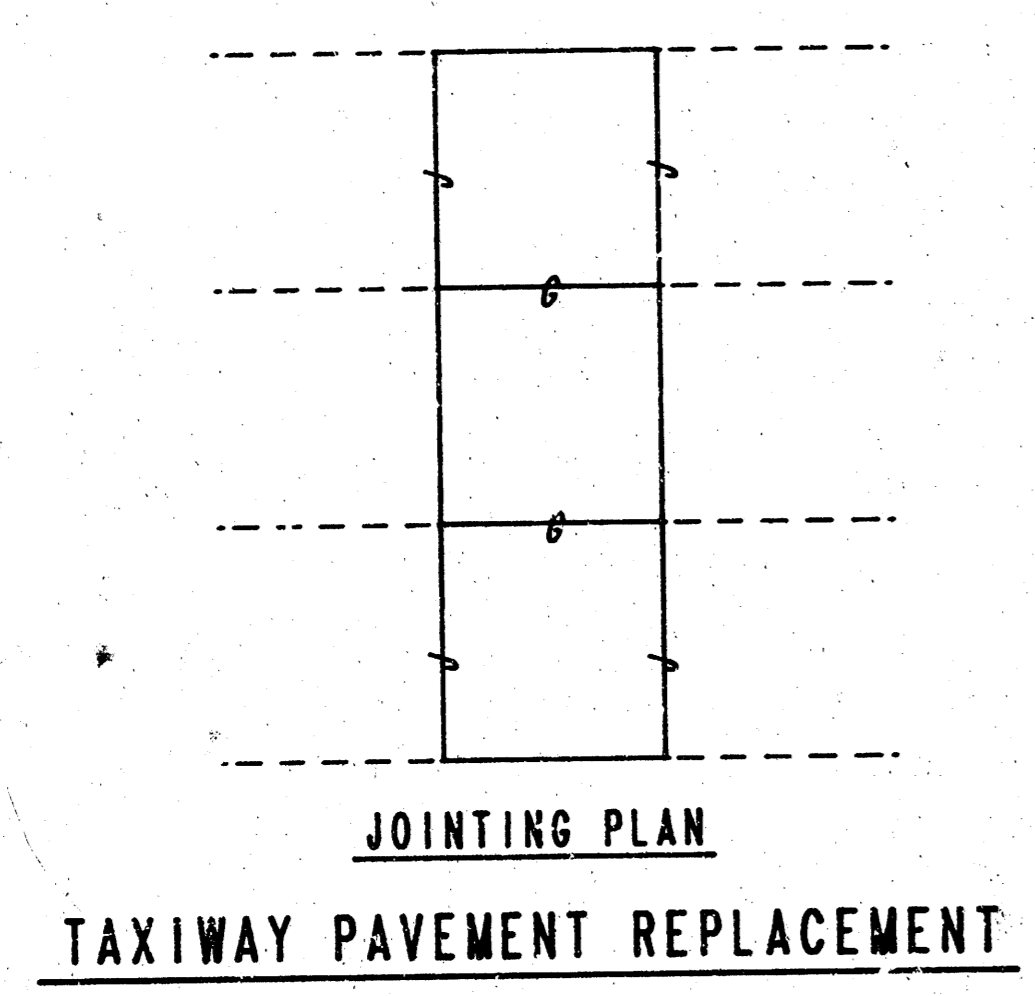
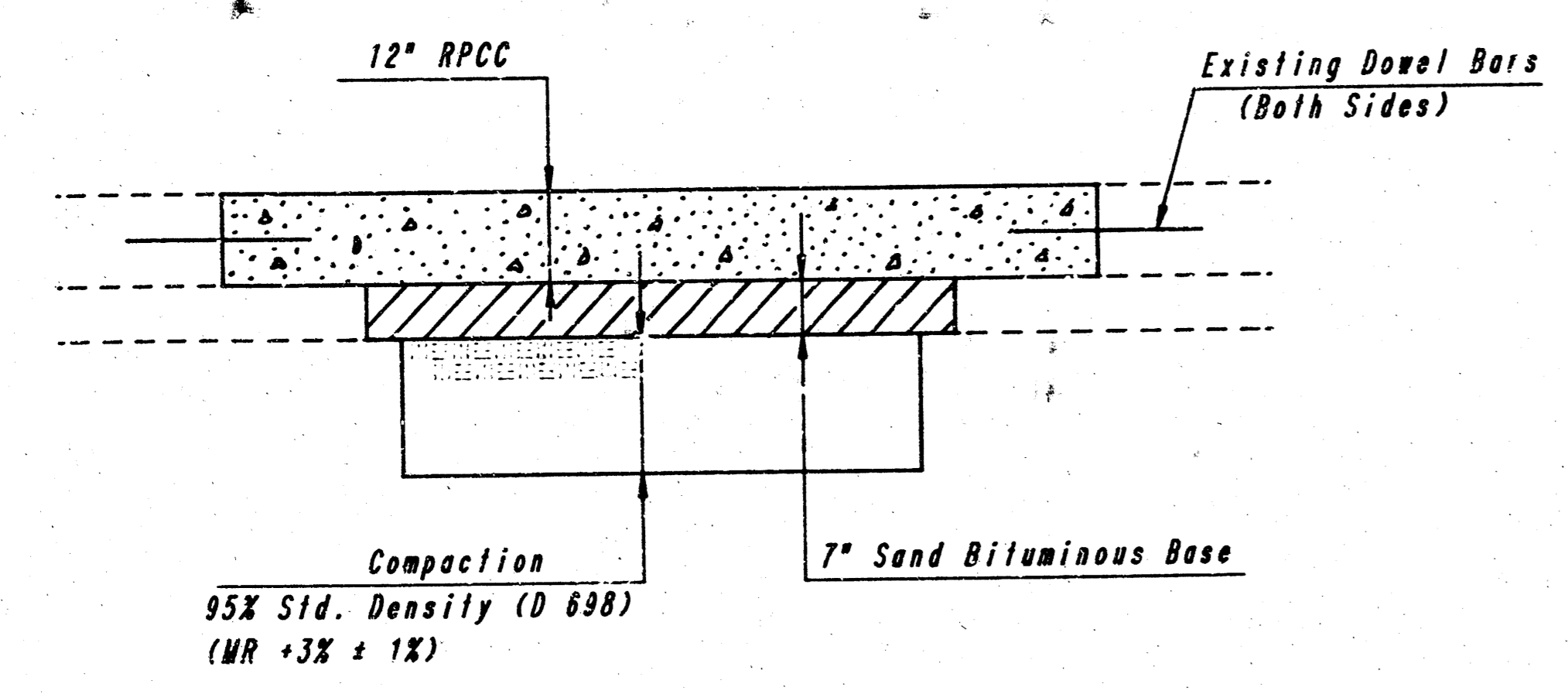
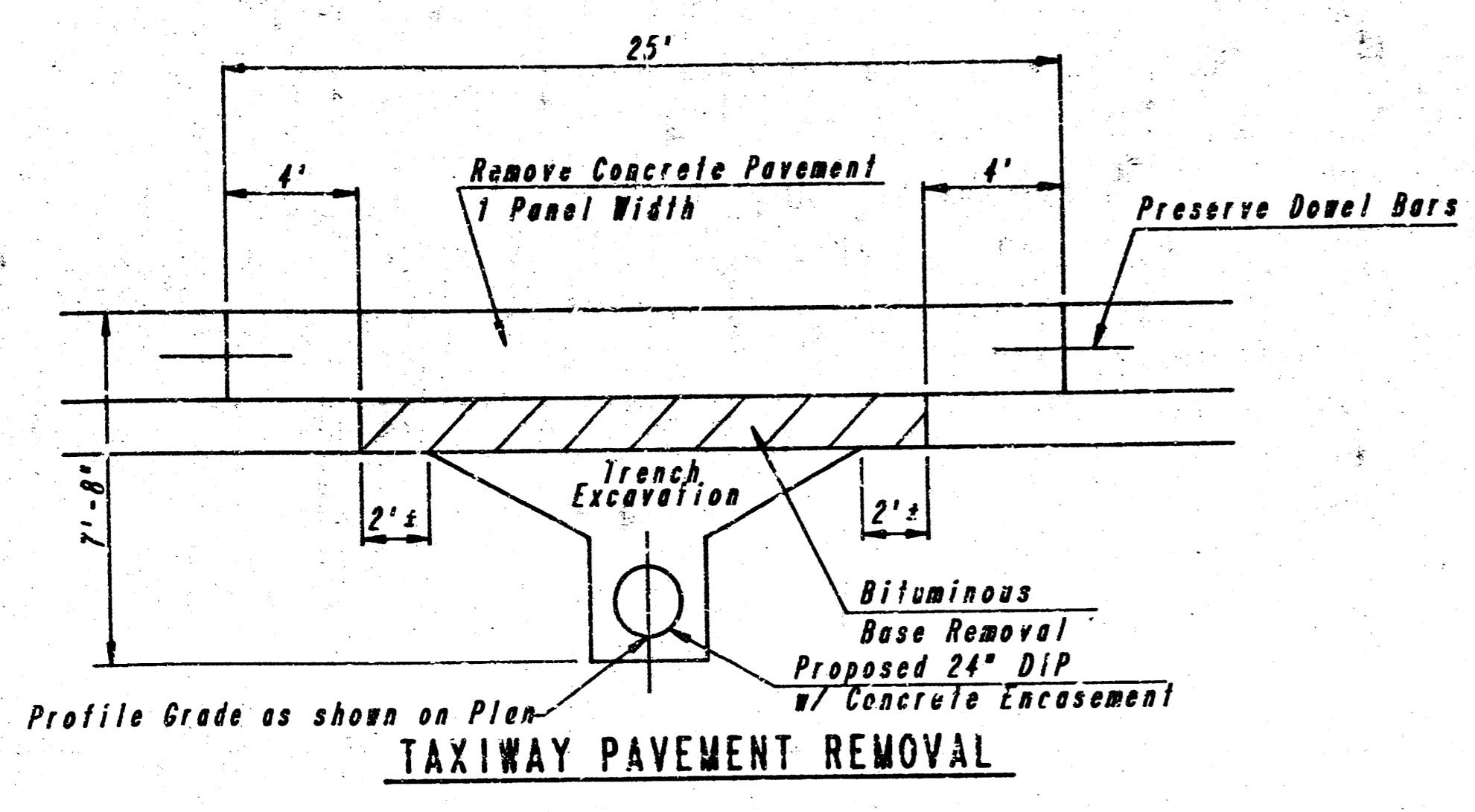
Note: All elevations are U.S.G.S.



9000 LF 24\"/>

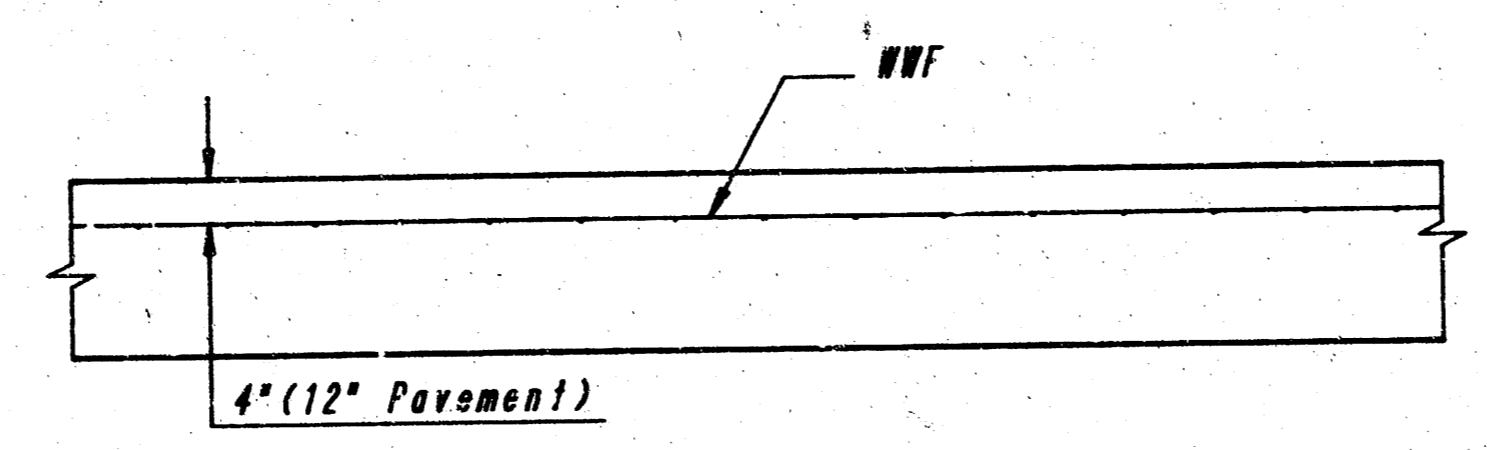
PHASE I  
 COWSKIN INTERCEPTOR SANITARY SEWER  
 MICHAEL E. LINDEBAK P.E., CITY ENGINEER  
 CITY OF WICHITA PROJ. NO. 488-76-245-81689-000-000-001

PROFESSIONAL ENGINEERING CONSULTANTS, P.A.  
 ENGINEERS  
 WICHITA, KANSAS  
 Job No. 34-86535-4  
 Date: April, 1987  
 Designed by: DLM  
 Drawn by: BLM



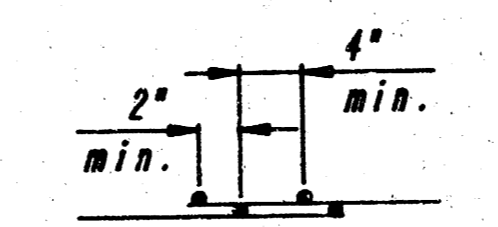
**WELDED WIRE FABRIC**

REINFORCING FABRIC SHALL BE FURNISHED IN SHEETS (SUGGESTED SIZE 11'-6" WIDE X 12'-0" LONG). THE CONTRACTOR MAY PROVIDE A DIFFERENT PATTERN OF FABRIC AS LONG AS A MINIMUM OF 0.14 IN /S.F. OF REINFORCING IS PROVIDED IN EACH DIRECTION. WELDED WIRE FABRIC SHALL BE CUT IN THE FIELD AS REQUIRED TO CONFORM TO THE SHAPE OF THE PANEL TO BE REINFORCED.

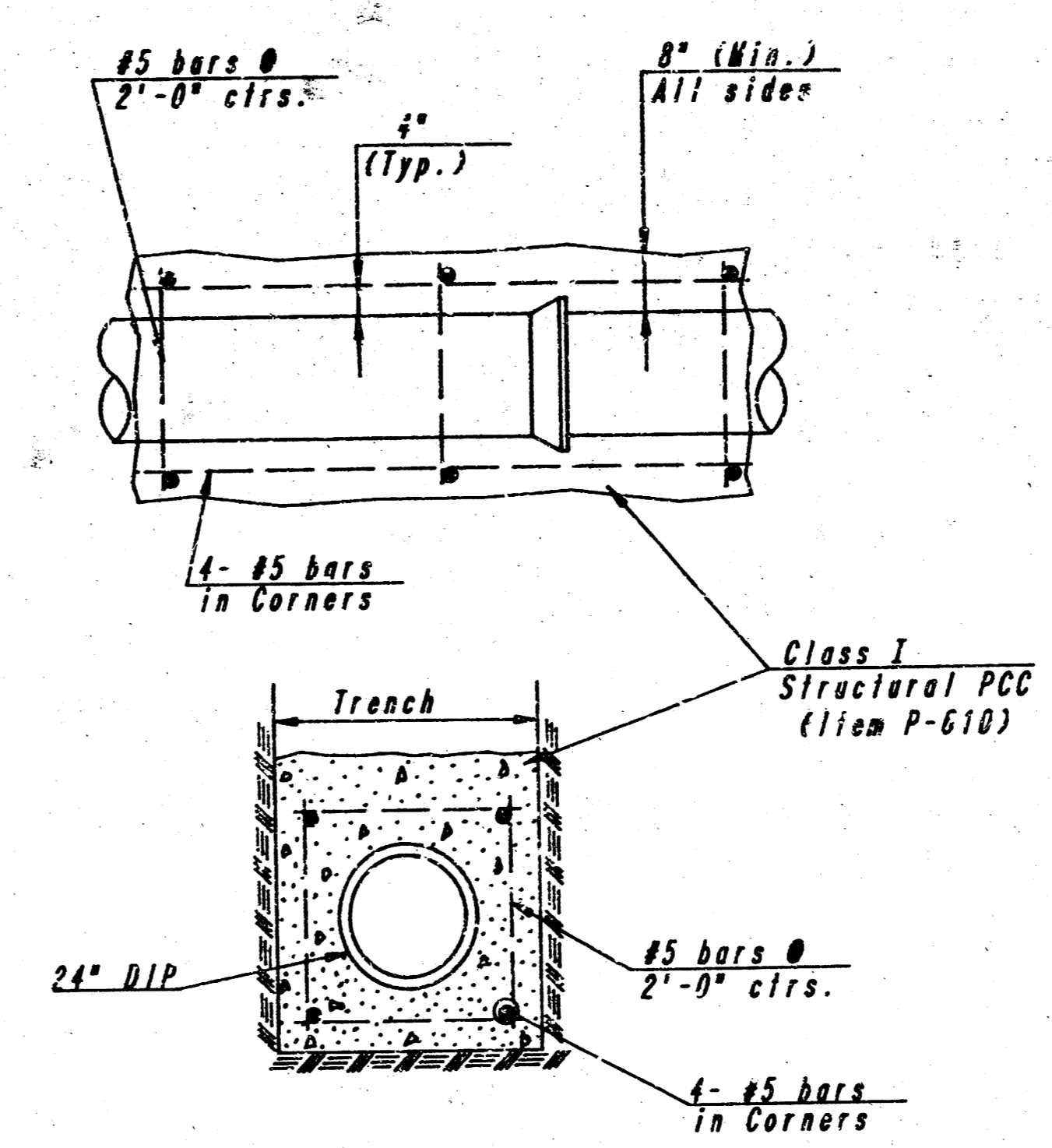


**SECTION THRU PAVEMENT**

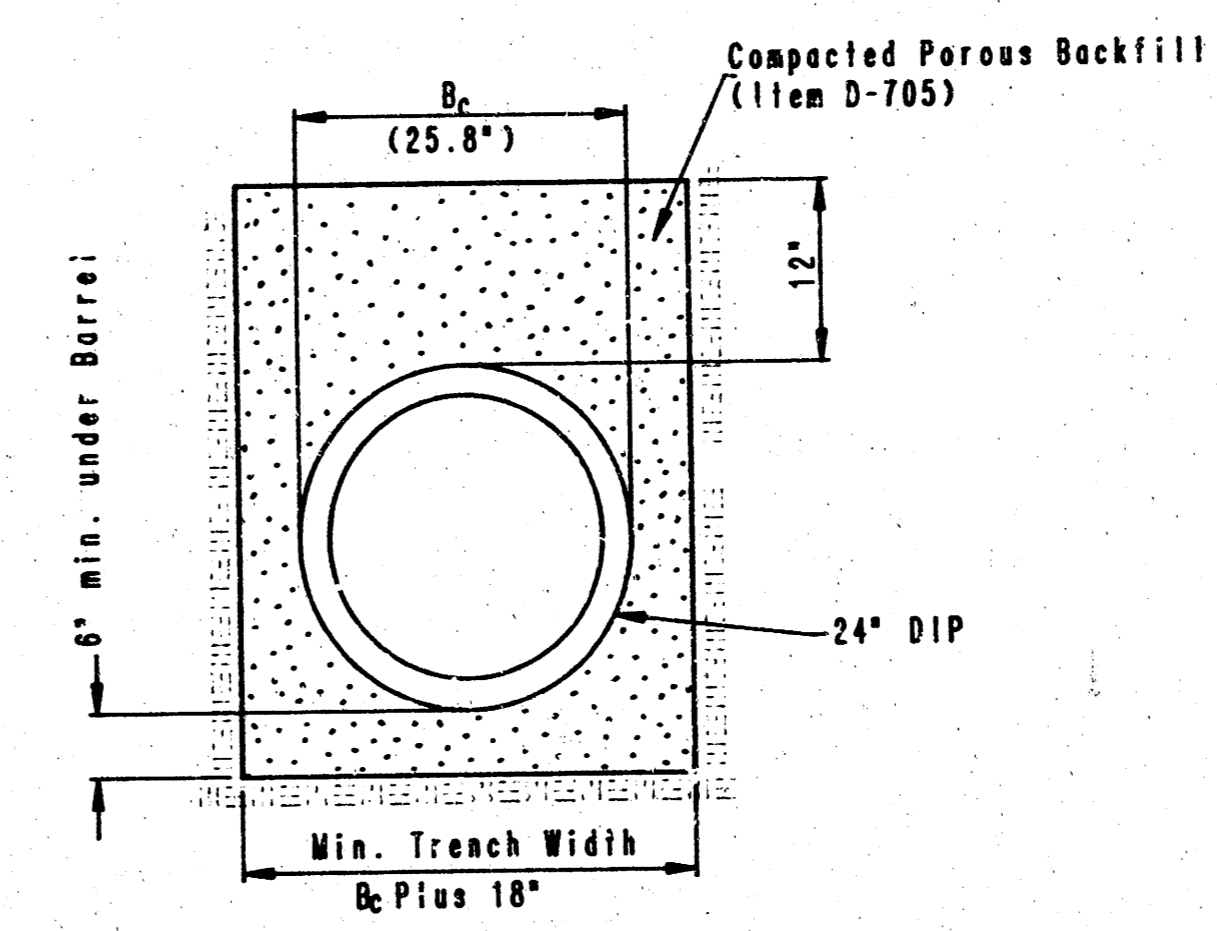
REINFORCING FOR OTHER THAN RECTANGULAR PANELS SHALL BE THE SAME AS DETAILED ABOVE; CUT TO THE APPROPRIATE SHAPE & OVERLAP SPLICED AS REQUIRED.



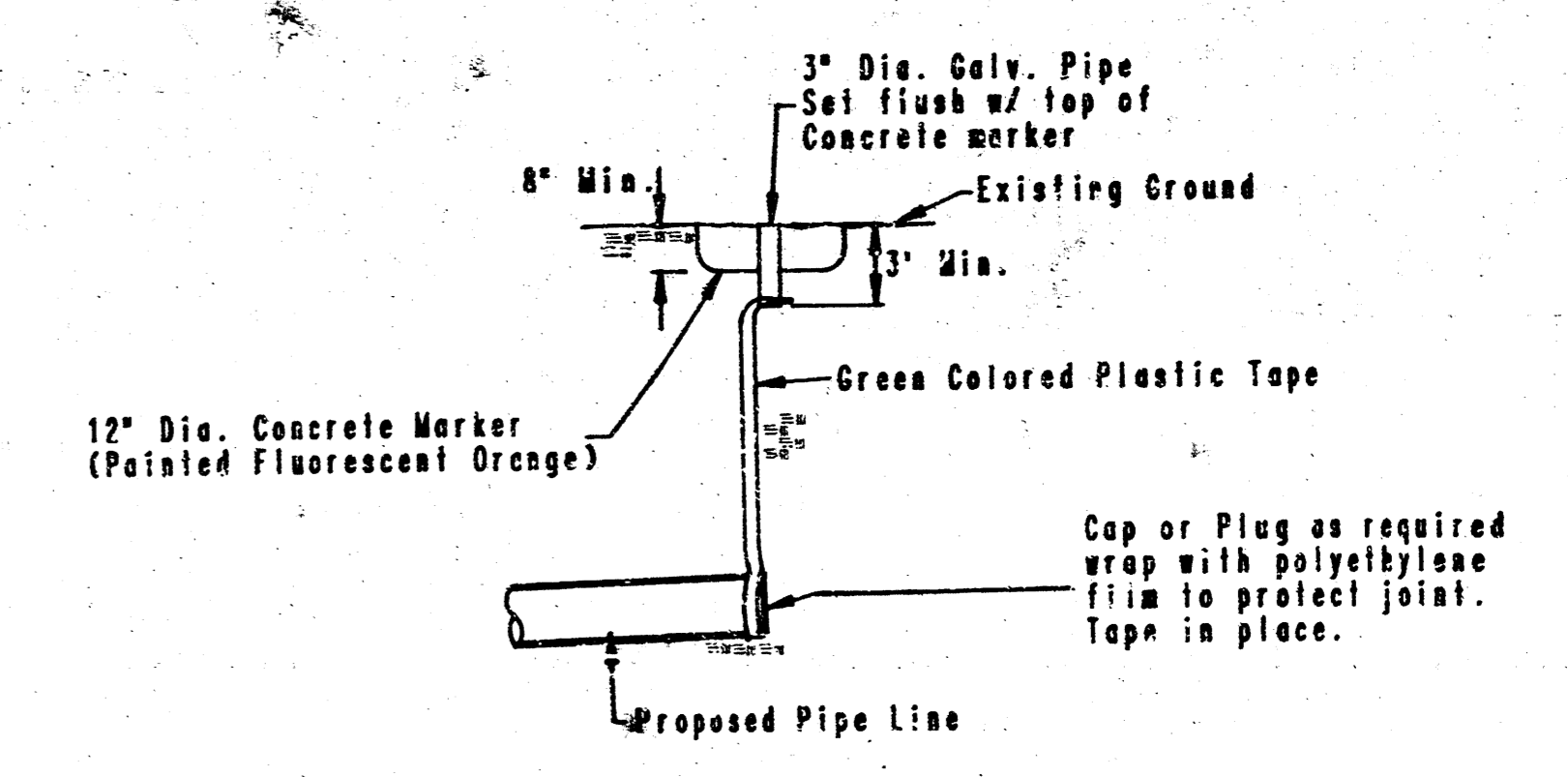
**TYPICAL SPLICE DETAIL**  
**REINFORCING DETAILS**



**REINFORCED CONCRETE ENCASEMENT DETAIL**

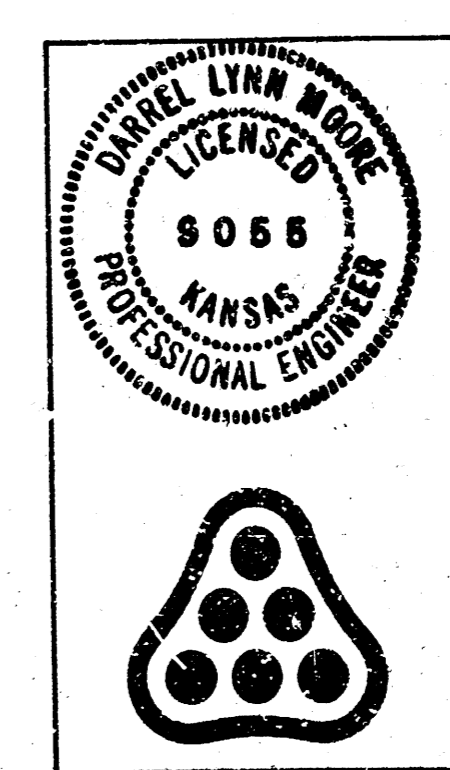


**PIPE BEDDING DETAIL**  
(Pipe Bedding Required where Concrete Encasement is not to be installed.)



**BURIED PIPE PLUG & FLAG DETAIL**  
(STARTING & PLUGGING SHALL BE SUBSIDIARY TO THE PIPE LINE INSTALLATION)

- NOTES**
- Materials and Construction as detailed on this sheet shall comply with the specifications in the "Project Manual for Reconstruction of Runway 11-19A", unless noted otherwise.
  - Backfill above the pipe bedding or above the concrete encasement shall be selected excavated material, per Item D-705, compacted to 95% Standard Density (ASTM D-698)(MR +2% to +4%).



No.	Revision	By	Date
<b>PHASE I</b>			
<b>COWSKIN INTERCEPTOR SANITARY SEWER</b>			
MICHAEL E. LINDERAK P.E., CITY ENGINEER CITY OF WICHITA PROJ. NO. 468-76-245-81689-000-000-001			
<b>PROFESSIONAL ENGINEERING CONSULTANTS, P.A.</b>			
ENGINEERS WICHITA, KANSAS			
Designed by DLM	Job No. 34-86535-4	Sht. 2 of 2	
Drawn by JP	Date April, 1987		