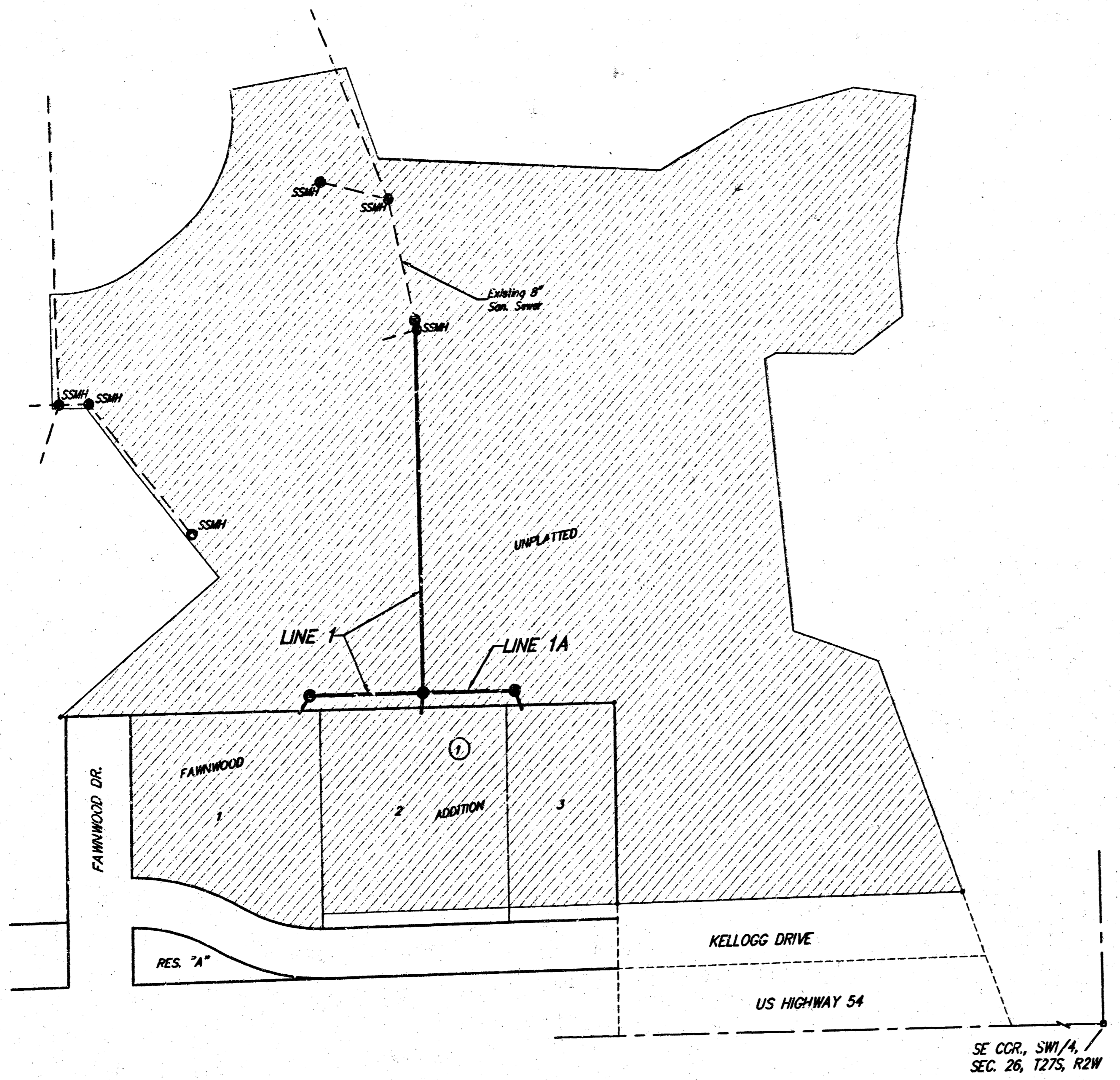


Lateral 25, C.I.S.
SANITARY SEWER IMPROVEMENTS
 to serve
**FAWNWOOD ADDITION &
 UNPLATTED TRACTS**

CITY OF WICHITA, KANSAS
 Michael E. Lindelof, P.E. City Engineer

Project Number
468-83174
 O.C.A. Number
743860



GENERAL NOTES:

- Contractor will be required to provide notice to utility companies a minimum of twenty-four (24) hours prior to any excavation, as follows:
 Kansas One-Call 687-2470
 The Contractor must notify the following in case of an emergency:
 Cox Communications 262-0661
 K.P.L. Gas Service Company 383-8650
 Kansas Gas & Electric Company 383-8600
 Peoples Gas Company 942-8350
 Southwestern Bell Telephone Company 1-800-344-7233
 City of Wichita Water Dept. 269-4908
 City of Wichita Traffic Engineering 269-4446
- Underground utility service lines and overhead utility pole lines are to be adjusted as necessary by others prior to construction unless the plans specifically call for their adjustment by the Contractor or unless the plans specifically identify utility to be adjusted by its owner during construction. Existing utilities and their location, as shown on the plans, represent the best information obtainable for design. The Contractor will be required to work around existing utilities within the right-of-way which do not conflict with proposed construction.
- Trees and shrubs in public right-of-way which are in direct conflict with proposed new construction shall be removed by the Contractor with the Engineer's approval. Trees and shrubs which are not in direct conflict with proposed new construction shall be saved and protected from damage.
- The Contractor shall give all property owners and/or tenants of developed property abutting the construction of this project a minimum of ten (10) days advance notice prior to start of construction.
- The Contractor shall be responsible for preserving property irons. The Contractor will be required to re-establish any property irons which are damaged or destroyed by his construction operations. Such irons shall be re-established by a licensed land surveyor in accordance with state laws.

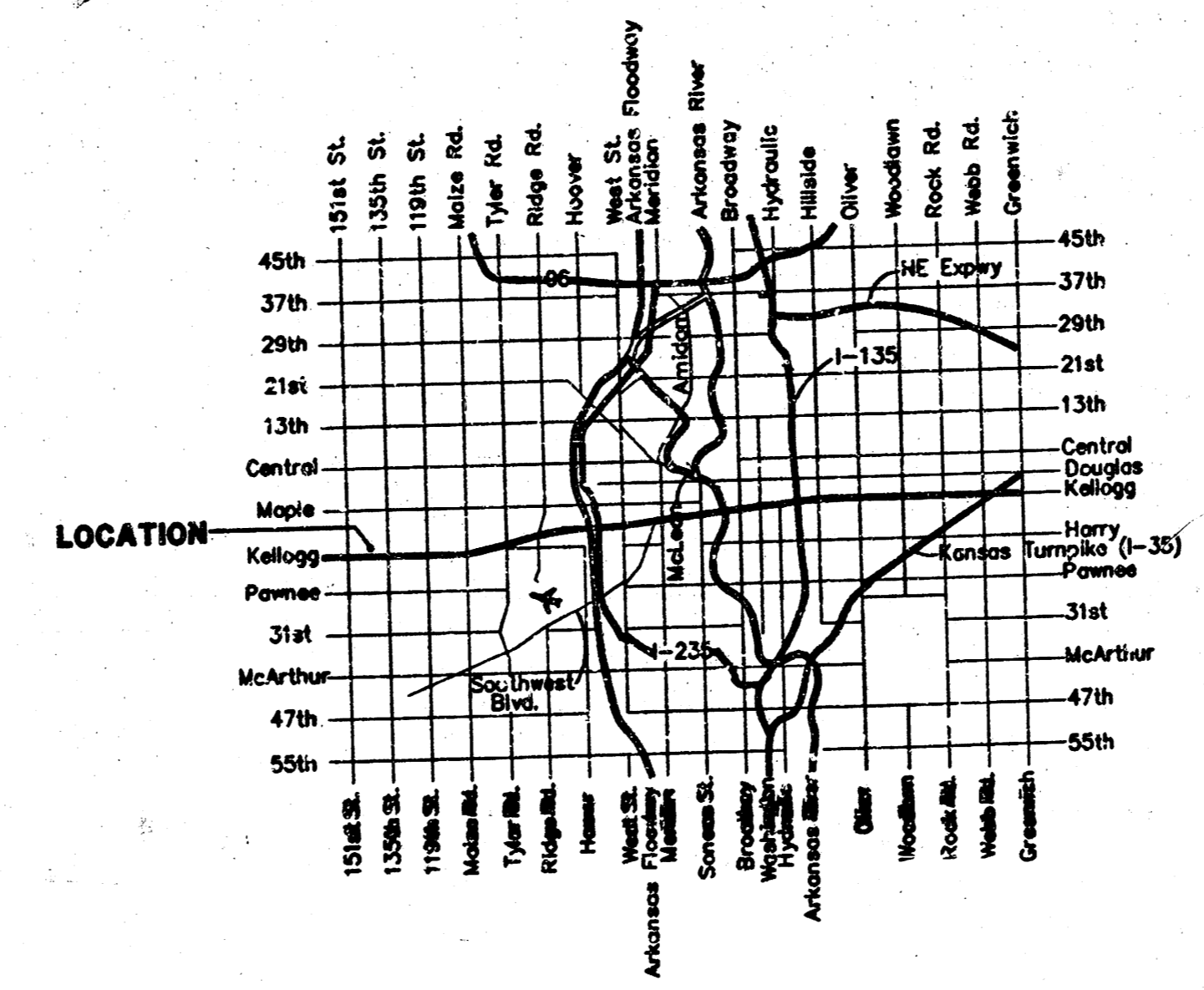
Sheet Index

Title Sheet	1
Line 1 & Line 1A	2
Shallow Manhole Detail	3
Ring & Cover Detail	4
Copy of Fawnwood Addition Plat	5

Benchmark

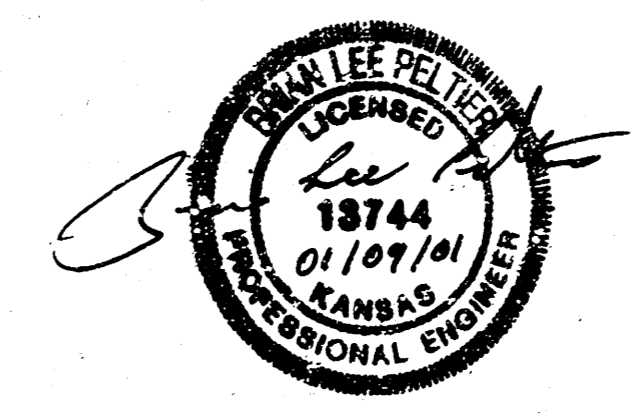
TOP OF 1" IRON, 12" DEEP,
 W/4 COR., SEC. 26,
 TWP. 27-S, R-2-W.
 ELEV. = 209.13

Booked
 P-168
 4-26-01
 Per R/2n
 RPL



Vicinity Map

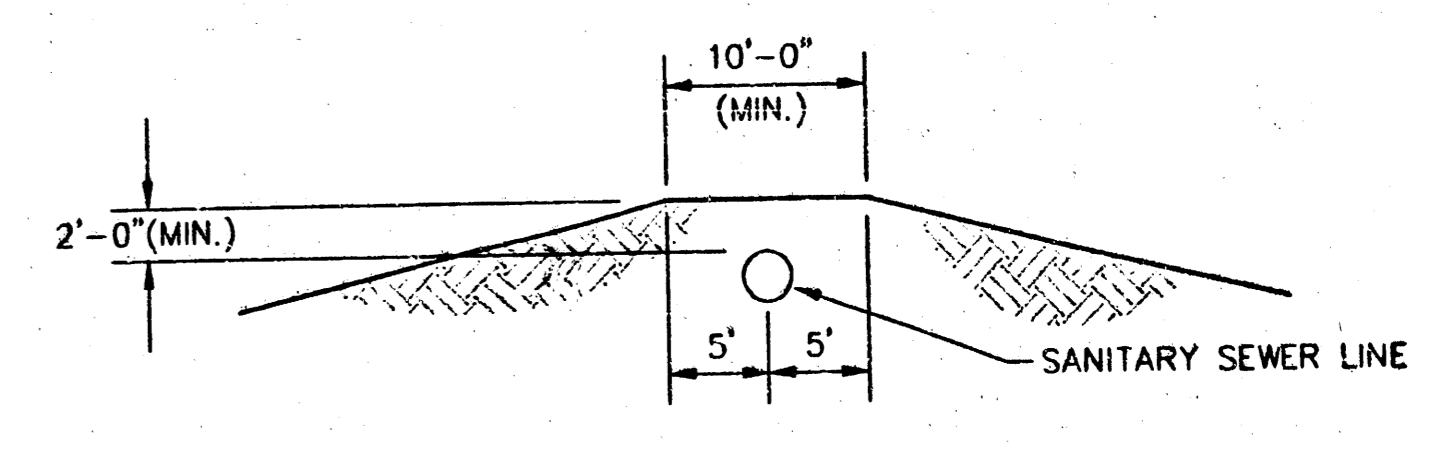
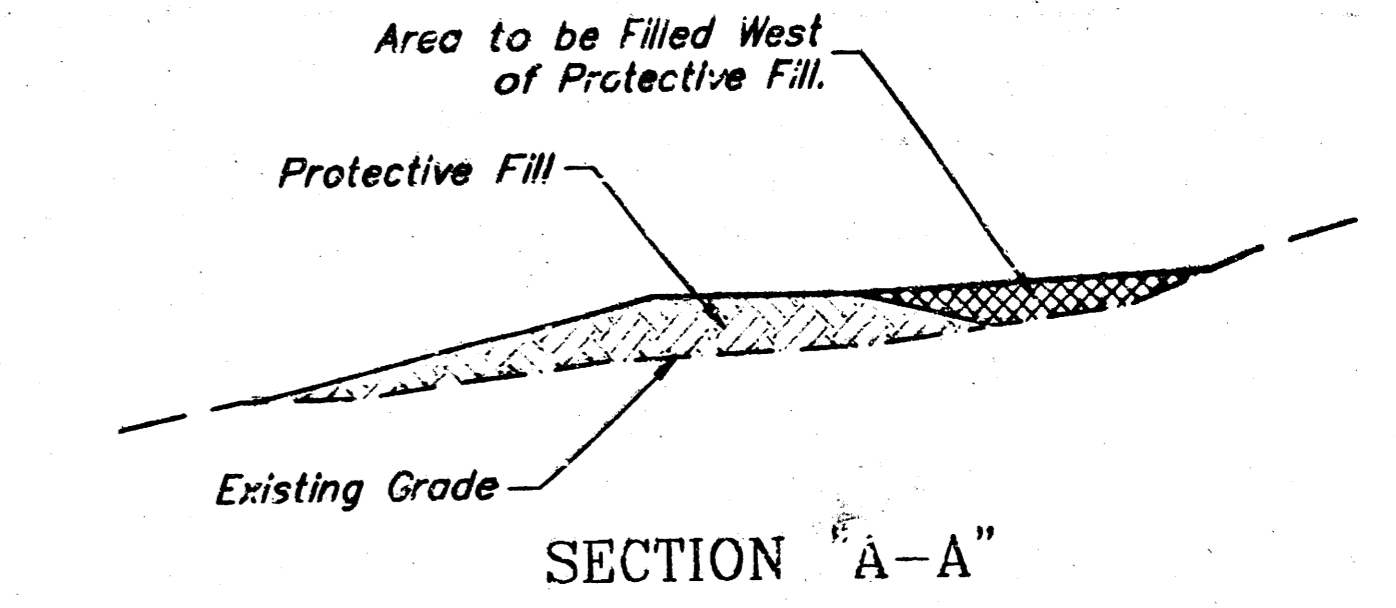
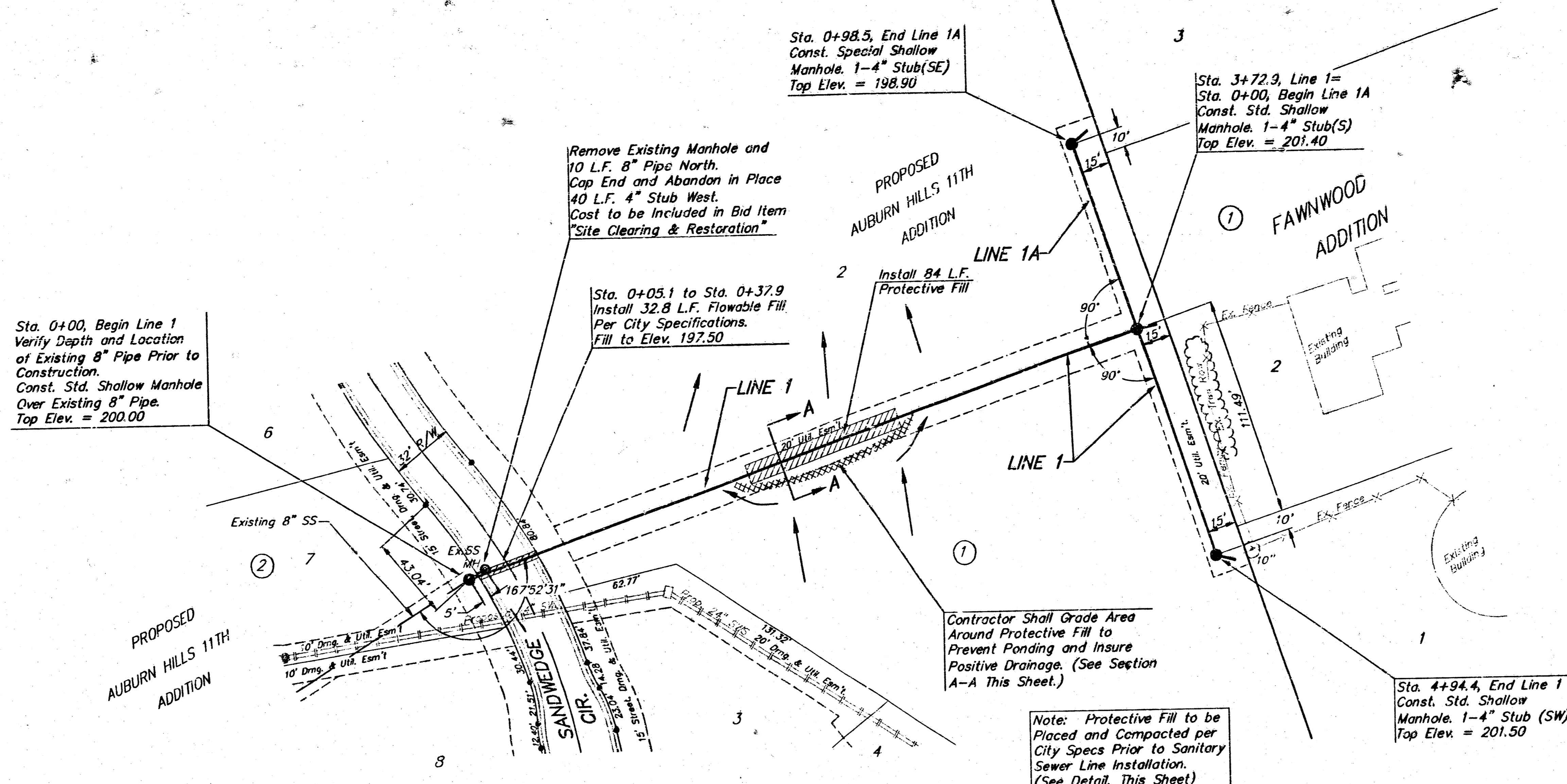
Benefit District



BAUGHMAN COMPANY P.A.
 ENGINEERING, SURVEYING, & PLANNING
 316-262-7271 • 316 ELLIS • WICHITA, KANSAS 67211

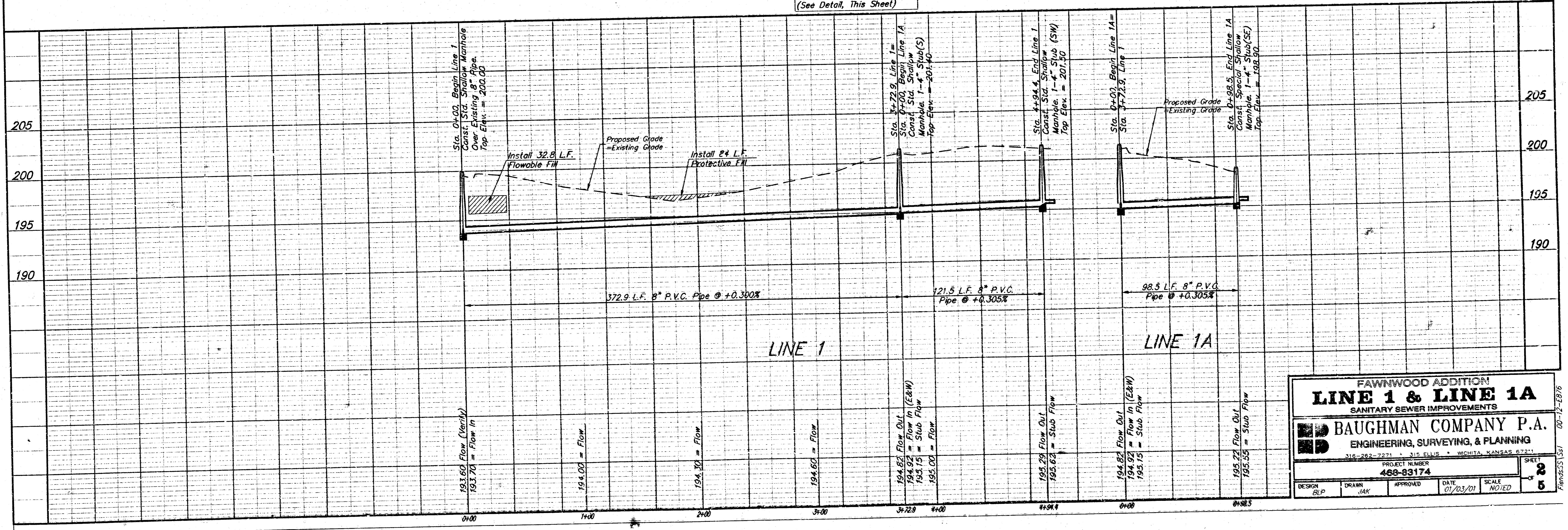
BENCHMARK:
TOP OF 1" IRON, 12" DEEP,
W1/4 COR. SEC. 26,
TWP. 27-S, R-2-W
ELEV. = 209.13

SCALE:
1" = 40' HORIZONTAL
1" = 5' VERTICAL
• = IRON



Note: Protective Fill to be Placed and Compacted per City Specs Prior to Sanitary Sewer Line Installation. (See Detail, This Sheet.)

MINIMUM PROTECTIVE FILL SHALL BE PROVIDED IN ALL INSTANCES WHERE COVER OVER THE PROP. SANITARY SEWER LINE IS LESS THAN (2) FEET. (COST SUBSIDIARY TO PIPE INSTALLATION)



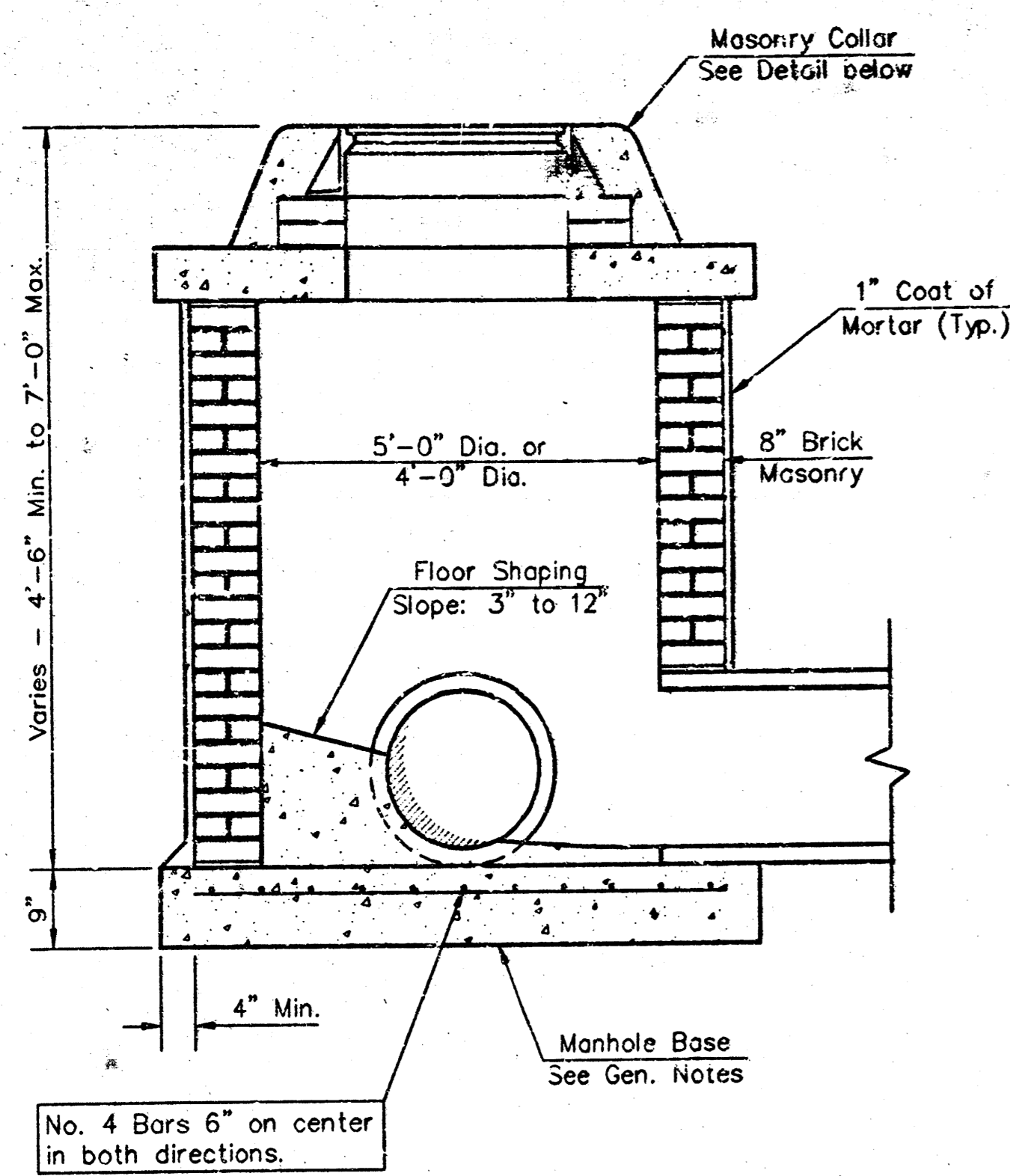
FAWNWOOD ADDITION
LINE 1 & LINE 1A
SANITARY SEWER IMPROVEMENTS

BAUGHMAN COMPANY P.A.
ENGINEERING, SURVEYING, & PLANNING

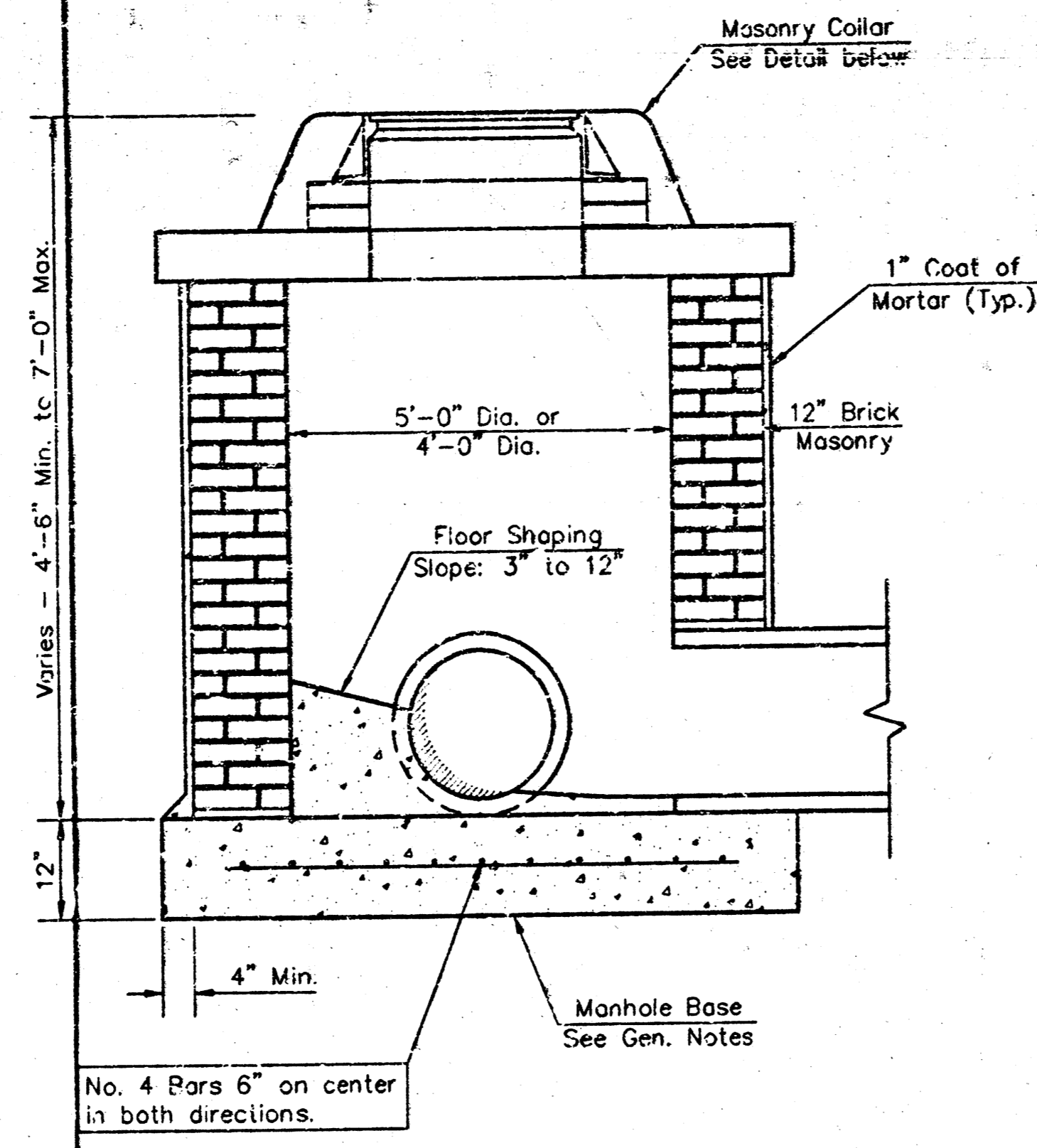
PROJECT NUMBER
460-93174

DATE: 01/03/01 SCALE: NOTED

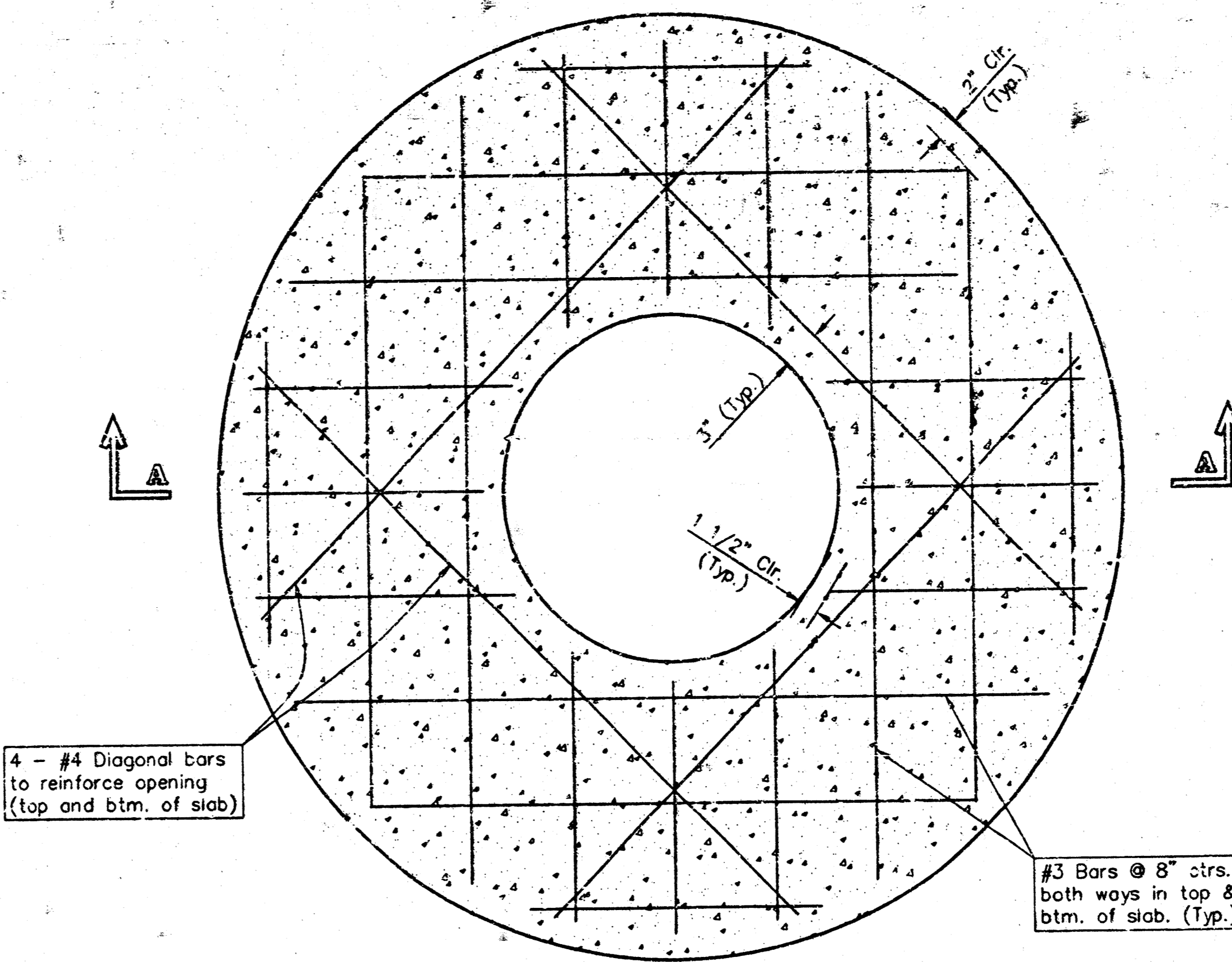
DESIGN: BLP DRAWN: JAK APPROVED: DATE: 01/03/01 SCALE: NOTED SHEET: **2** OF **5**



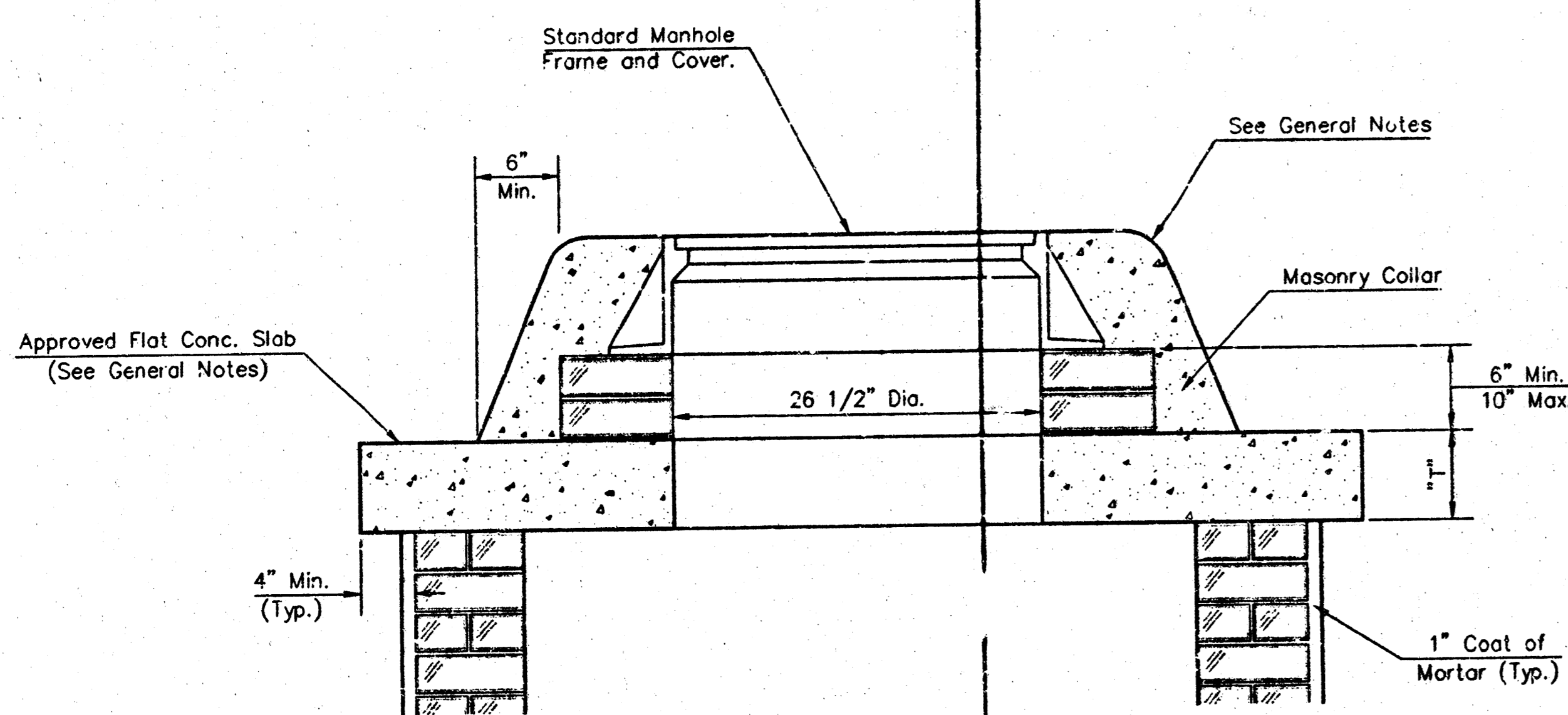
SHALLOW TYPE "A" MANHOLE



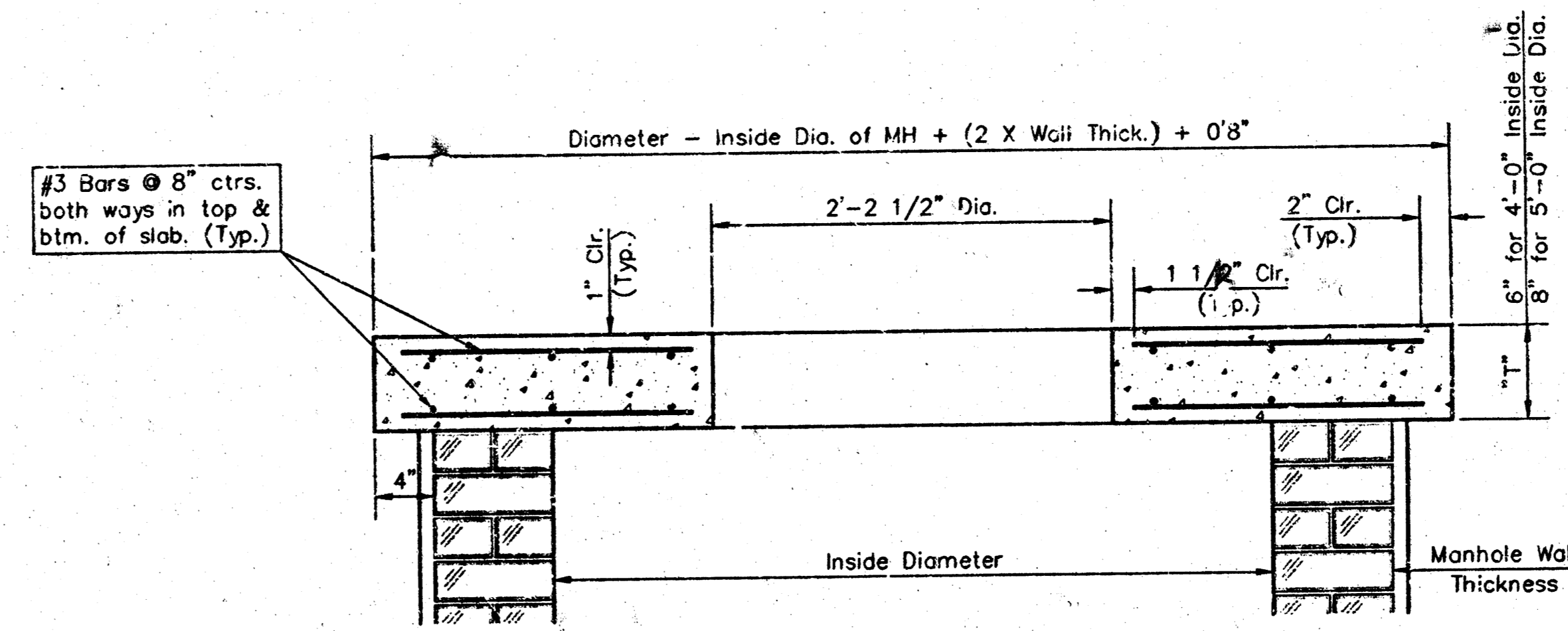
SHALLOW TYPE "B" MANHOLE



PLAN

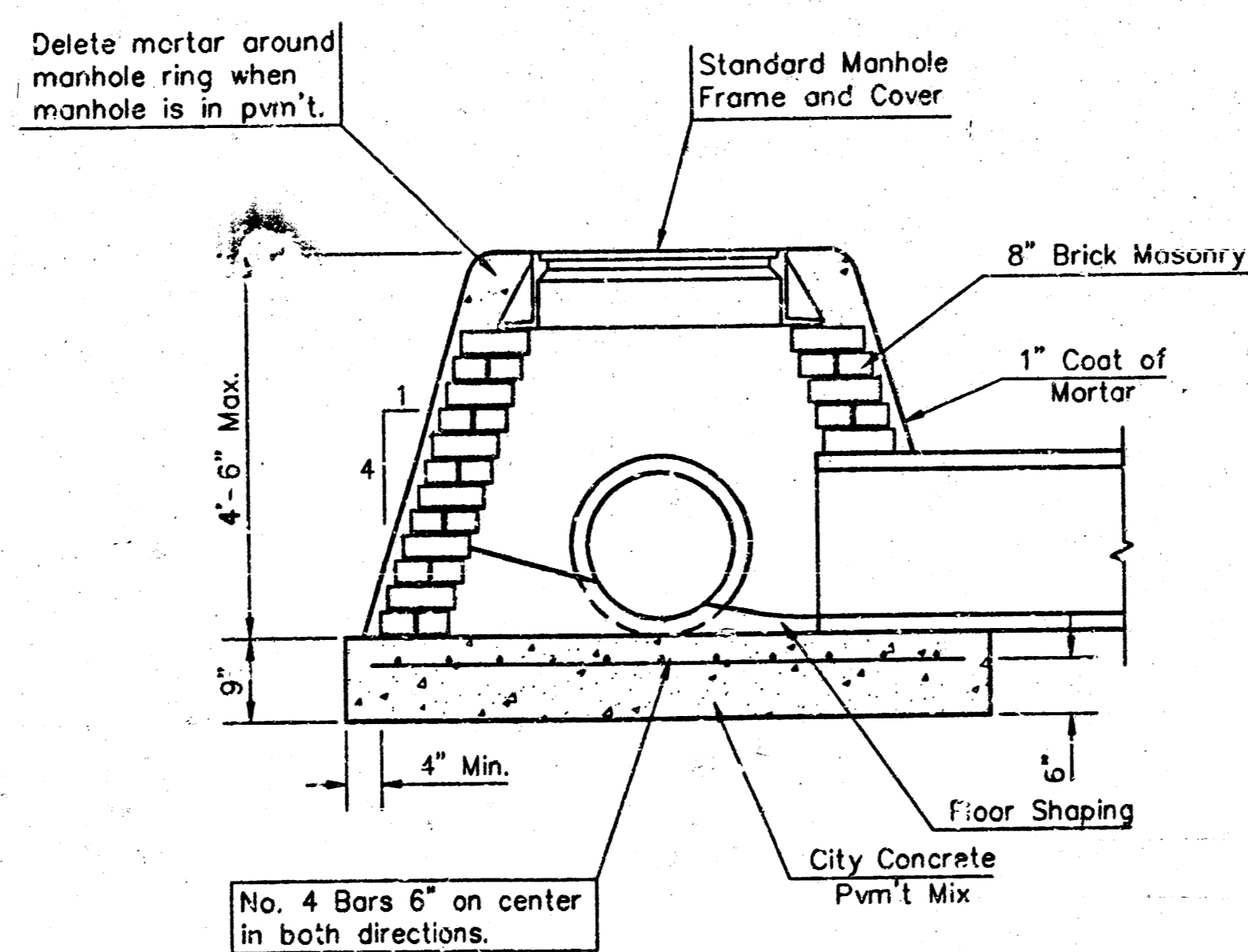


MASONRY COLLAR DETAIL

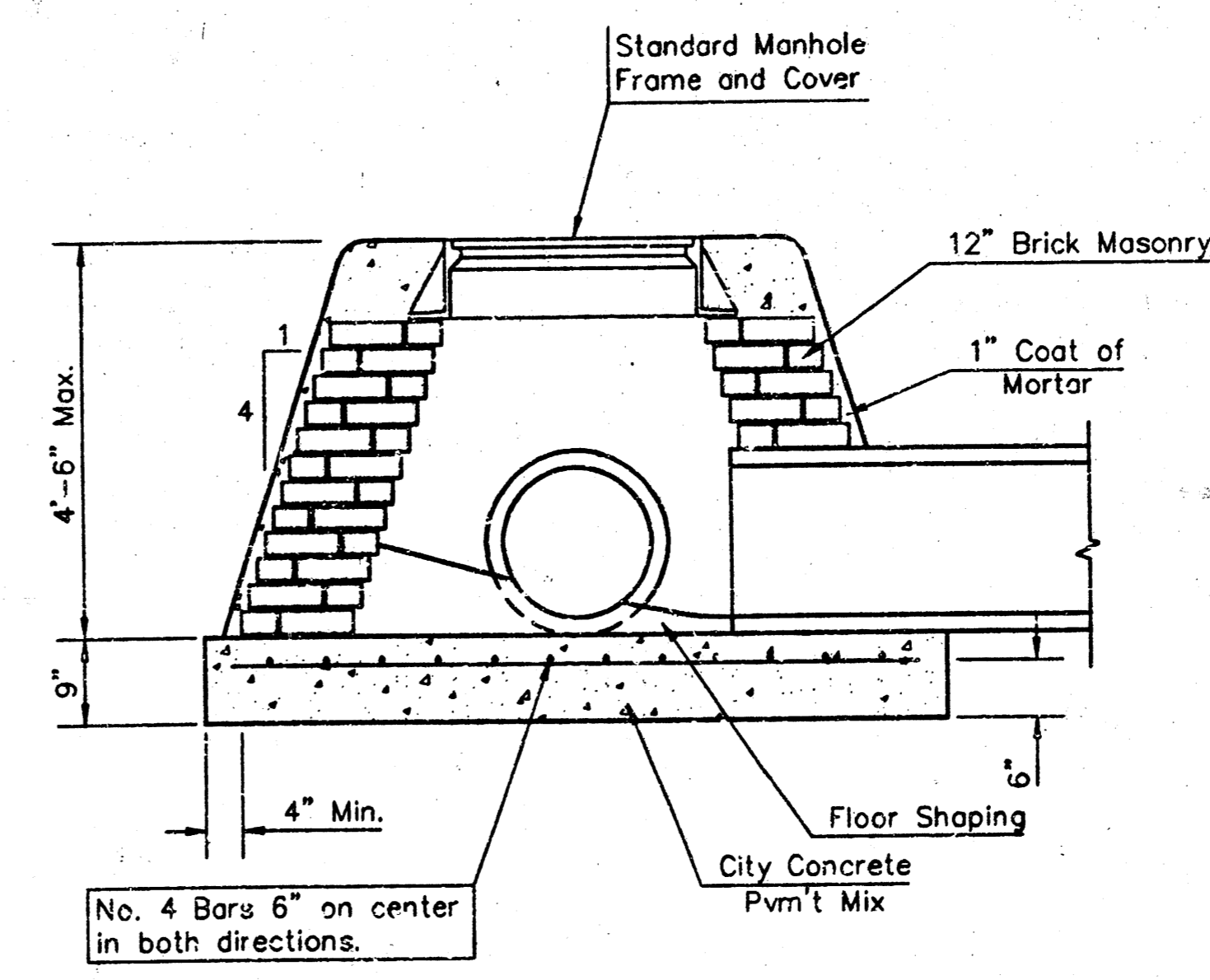


SECTION A-A

FLAT CONCRETE SLAB DETAILS



SPECIAL SHALLOW TYPE "A" MANHOLE



SPECIAL SHALLOW TYPE "B" MANHOLE

GENERAL NOTES

- Mortar used in masonry construction shall contain 8 sacks of cement per cubic yard. Concrete used in manhole bases shall conform to the requirements of concrete for concrete pavement construction as specified in the city standard paving specifications using city concrete cement mix without air entraining admixture. Mortar shall be placed around the manhole ring as shown on the drawings when manholes are constructed in unpaved areas. Type "A" shallow manholes can be used on sewers when the manhole is not located within public street pavement. Manholes constructed where pipe sizes are smaller than 24" shall have an inside diameter of 4". Manholes constructed where pipe sizes are 24" or larger shall have an inside diameter of 5". Completed manhole shall be without leaks and water tight.
- Reinforcing steel shall be installed in the manhole bases and shall consist of no. 4 bars placed on 6" centers in both directions. The manhole base reinforcement shall be placed 6" above the bottom of the manhole base. All costs for furnishing and installing reinforcing steel shall be included in the unit price bid for the manhole.
- The floors of all manholes shall be shaped with flow channels such that the manholes will be self cleaning and free of areas where solids could be deposited as sewage flows through the manhole from all inlet pipes to the outlet pipe. Flow channels shall be formed to match the bottom halves of the inflowing pipes and the outflowing pipe as shown by the drawings. Manhole floors shall have slopes of 3 inches per foot in the areas outside of the flow channels sloped toward the flow channels. Pipes laid through manholes shall have the top half removed to neat lines for the full inside diameter of the manhole. Manhole floors shall then be shaped around the bottom half of the pipe which forms the flow channel.
- Pipes installed within the excavation made for the manhole shall be cradled with concrete to the limits of the manhole excavation. When clay pipe is used, the cradle shall extend to the first joint outside the manhole. The cradle shall be terminated at the clay pipe joint in a manner which will maintain the flexibility of the joint. Cost of cradle within manhole excavation or to clay pipe joints adjacent to manhole shall be included in the unit price bid for the manhole.
- Manhole cover castings and manhole frame castings shall conform to the requirements as indicated in the standard specifications and as shown in the standard detail drawings.
- The crowns of inflowing pipes shall never be set lower than the crown of the outflowing pipe.
- Standard shallow manholes type "A" and "B" shall be paid for at the unit price bid per each for the type and diameter indicated. Standard special shallow manholes type "A" and "B" shall be paid for at the unit price bid per each for the type indicated. All standard shallow manhole diameters will be 4' unless indicated otherwise.
- All brick used in manhole construction shall meet Grade SW of ASTM C652 or C62-87.

CITY OF WICHITA, KANSAS
Std. Manhole Detail
 TYPE "A" AND TYPE "B"

BAUGHMAN COMPANY P.A.
 ENGINEERING, SURVEYING, & PLANNING
 316-262-7271 • 315 ELLIS • WICHITA, KANSAS 67201

PROJECT NUMBER
468-63174

DESIGN: C.O.W. DRAWN: Staff APPROVED: DATE: 01/03/01 SCALE: NONE SHEET: **3** OF **5**

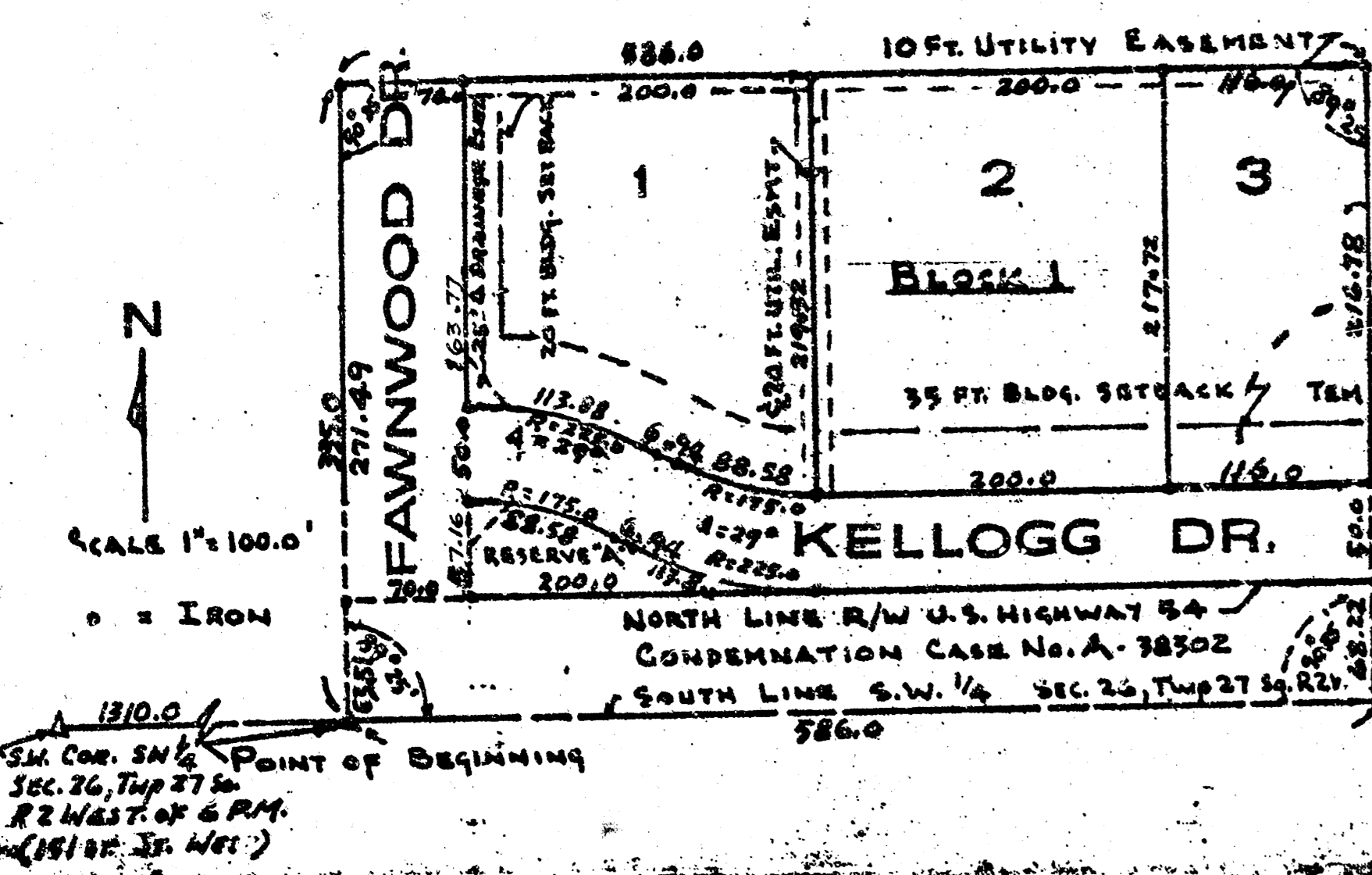
G-2

7-16

L41-3

FAWNWOOD ADDITION

TO
SEDGWICK COUNTY, KANSAS
LOTS 1, 2, 3 BLOCK 1



KNOW ALL MEN BY THESE PRESENTS THAT WE FISHER CONSTRUCTION DEVELOPMENT COMPANY INC. ALL FAWNWOOD INC. HAVE CAUSED THE LAND DESCRIBED IN THE ENGINEER'S CERTIFICATE TO BE PLATTED INTO A BLOCK TO BE KNOWN AS "FAWNWOOD ADDITION" TO SEDGWICK COUNTY, KANSAS.

THE STREETS, AS SHOWN ON THE PLAT, ARE HEREBY DEDICATED TO AND FOR THE USE OF THE PUBLIC. RESERVE 'X' FOR DRAINAGE AND FOR THE USE OF THE PUBLIC UTILITIES AS SHOWN ON THE PLAT. THE EASEMENTS, AS SHOWN ON THE PLAT, ARE HEREBY DEDICATED TO AND FOR THE USE OF THE PUBLIC UTILITIES AS SHOWN FOR CONSTRUCTION AND MAINTENANCE PURPOSES.

FOR AND IN WITNESS WHEREOF I HAVE HEREIN SET MY HAND AND AFFIXED MY NOTARY SEAL THE DAY AND YEAR ABOVE WRITTEN.

STATE OF KANSAS, COUNTY OF SEDGWICK, KS.
 EDWARD ROENBACH, Notary Public
 My Commission Expires 1-1-75

STATE OF KANSAS, COUNTY OF SEDGWICK, KS.
 I, HOWARD A. FISHER, PROFESSIONAL ENGINEER, DO HEREBY CERTIFY THIS 23rd DAY OF DECEMBER, 1974, THAT I HAVE SURVEYED AND PLATTED "FAWNWOOD ADDITION" TO SEDGWICK COUNTY, KANSAS, LOTS 1, 2, 3 BLOCK 1, AND THAT THE ACCOMPANYING PLAT IS A TRUE AND CORRECT EXHIBIT OF A TRACT OF LAND LOCATED IN THE SOUTH WEST QUARTER (SW 1/4) OF SECTION 26, TOWNSHIP 27, SOUTH RANGE 2 WEST OF THE SIXTH (6TH) PRINCIPAL MERIDIAN IN SEDGWICK COUNTY, KANSAS.

DESCRIBED AS BEGINNING AT A POINT 1310 FEET EAST OF THE SOUTHWEST (SW) CORNER OF THE SOUTHWEST QUARTER (SW 1/4), SECTION TWENTY-SIX (26), TOWNSHIP TWENTY SEVEN (27), SOUTH RANGE TWO (2) WEST OF THE SIXTH (6TH) PRINCIPAL MERIDIAN IN SEDGWICK COUNTY, KANSAS; THENCE NORTH AT AN ANGLE OF EIGHTY-NINE DEGREES TWENTY-FIVE MINUTES A DISTANCE OF 335.0 FEET; THENCE EAST PARALLEL TO SOUTH LINE OF SAID SECTION 58.0 FEET; THENCE SOUTH 335 FEET TO THE SOUTH LINE OF SAID SECTION; THENCE WEST 58.0 FEET TO POINT OF BEGINNING, EXCEPT FOR U.S. HIGHWAY 54 RIGHT OF WAY.

STATE OF KANSAS, COUNTY OF SEDGWICK, KS.
 EDWARD ROENBACH, Notary Public
 My Commission Expires 1-1-75

THIS PLAT OF "FAWNWOOD ADDITION" HAS BEEN SUBMITTED TO AND APPROVED BY THE WICHITA SEDGWICK COUNTY METROPOLITAN AREA PLANNING COMMISSION, WICHITA, SEDGWICK COUNTY, KANSAS, DATED THIS 9th DAY OF JANUARY, 1975.

WICHITA-SEDGWICK COUNTY METROPOLITAN AREA PLANNING COMMISSION:
 HAROLD KAWAN, CHAIRMAN
 ROBERT A. LAKIN, SECRETARY

THIS PLAT APPROVED AND ALL DEDICATIONS SHOWN HEREON, IN WHOLE OR IN PART, ACCEPTED BY THE BOARD OF COUNTY COMMISSIONERS, COUNTY OF SEDGWICK, STATE OF KANSAS, DATED THIS 9th DAY OF MAY, 1975.

BOARD OF COUNTY COMMISSIONERS:
 CARL E. RUSH, CHAIRMAN
 EARL B. RUSH, COMMISSIONER
 JAMES H. HALL, COMMISSIONER
 GEORGE PIERCE, COUNTY CLERK

STATE OF KANSAS, COUNTY OF SEDGWICK, S.S. #230984

THIS IS TO CERTIFY THAT THIS INSTRUMENT WAS FILED FOR RECORD IN THE REGISTER OF DEEDS OFFICE, AT 10:00 P. M., ON THIS 22nd DAY OF APRIL, 1975.

WILLIAM D. DICKSON, REGISTER OF DEEDS
 DONALD C. GISSICK, DEPUTY

BE IT REMEMBERED THAT ON THIS 23rd DAY OF DECEMBER, 1974, BEFORE ME, A NOTARY PUBLIC, IN AND TO ME PERSONALLY KNOWN TO BE THE SAME PERSON WHO EXECUTED THE FOREGOING INSTRUMENT OF WRITING AND DULY ACKNOWLEDGED THE EXECUTION OF SAME, AS THE ACT AND DEED OF SAID PERSON, IN TESTIMONY WHEREOF I HAVE SET MY HAND AND AFFIXED MY NOTARY SEAL THE DAY AND YEAR ABOVE WRITTEN.

STATE OF KANSAS, COUNTY OF SEDGWICK, KS.
 EDWARD ROENBACH, Notary Public
 My Commission Expires 1-1-75

BE IT REMEMBERED THAT ON THIS 23rd DAY OF DECEMBER, 1974, BEFORE ME, A NOTARY PUBLIC, IN AND TO ME PERSONALLY KNOWN TO BE THE SAME PERSON WHO EXECUTED THE FOREGOING INSTRUMENT OF WRITING AND DULY ACKNOWLEDGED THE EXECUTION OF SAME, AS THE ACT AND DEED OF SAID PERSON, IN TESTIMONY WHEREOF I HAVE SET MY HAND AND AFFIXED MY NOTARY SEAL THE DAY AND YEAR ABOVE WRITTEN.

STATE OF KANSAS, COUNTY OF SEDGWICK, KS.
 EDWARD ROENBACH, Notary Public
 My Commission Expires 1-1-75

THIS PLAT APPROVED AND ALL DEDICATIONS SHOWN HEREON, IF ANY, ACCEPTED BY THE BOARD OF COMMISSIONERS OF THE CITY OF WICHITA, KANSAS, DATED THIS 22nd DAY OF APRIL, 1975.

COMMISSIONER
 DONALD C. GISSICK, CITY CLERK

F-147

G-2

7-16

PROTECTIVE COPY FILED 4/23/75