

Sanitary Sewer Improvements
TO SERVE
BREEZY POINTE 2ND ADDITION
Lateral 21, Main 1, Cowskin Interceptor Sewer

Project Number
468 76 245 82264 000 000 001
Index Code
741876

CITY OF WICHITA, KANSAS
Michael E. Lindebak City Engineer

General Notes

1. Contractor will be required to provide notice to utility companies a minimum of twenty-four (24) hours prior to any excavation, as follows:

Kansas One-Call 687-2470

The Contractor must notify the following in case of an emergency:

Cablevision 262-4270
or 263-2061
K.P.L. Gas Service Company 263-7511
Kansas Gas & Electric Company 264-1141
Arkla Gas Company 942-8350
or 263-6161
Southwestern Bell Telephone Company 1-571-2611
City of Wichita Water Department 268-4908
City of Wichita Sewer Maintenance 268-4071

2. Underground utility service lines and overhead utility poles lines are to be adjusted as necessary by others prior to construction unless the plans specifically call for their adjustment by the Contractor or unless the plans specifically identify a utility to be adjusted by its owner during construction. Existing utilities and their location, as shown on the plans, represent the best information obtainable for design. The Contractor will be required to work around existing utilities within the right-of-way which do not conflict with proposed construction.

3. Trees and shrubs in public right-of-way which are in direct conflict with proposed new construction shall be removed by the Contractor with the Engineer's approval. Trees and shrubs which are not in direct conflict with proposed new construction shall be saved and protected from damage.

4. The Contractor shall give all property owners and/or tenants of developed property abutting the construction of this project a minimum of ten (10) days advance notice prior to start of construction.

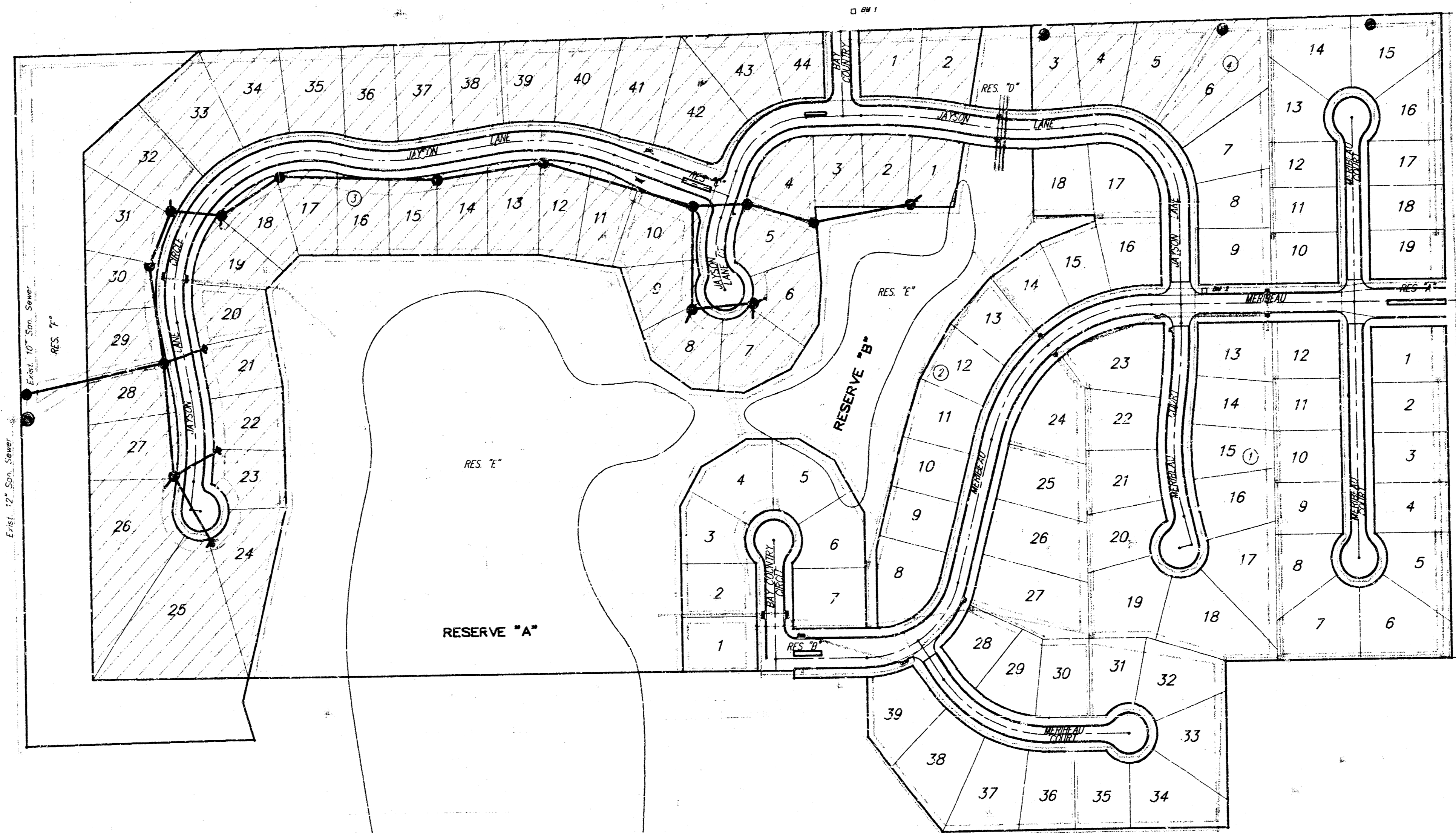
5. The Contractor shall be responsible for maintaining continuous flow of sewage through construction. Contractor's proposed method for maintaining sewage flow shall be approved by the Engineer. Cost of maintaining flow of sewage through construction will not be paid for directly and this cost shall be considered as subsidiary to the other pay items of work.

6. The Contractor shall be responsible for preserving property irons. The Contractor will be required to re-establish any property irons which are damaged or destroyed by his construction operations. Such irons shall be re-established by a licensed land surveyor in accordance with state laws.

7. Contractor shall grade the sanitary sewer alignment to the profile and elevations where shown on the plan. All costs for grading shall be paid as lump sum for easement grading.

8. Traffic will not be affected by construction on this project.

9. All areas disturbed by construction operations shall be seeded with rye grass immediately following construction in that area.



Project Area
Benefit District

Benchmarks:

1. "□" Top of Curb on N.W. Corner Lot 38, Blk. 5 of Bay Country Estates. Elev. = 151.48 City Datum
2. "□" Top of Curb East End of Return N.E. Corner of Meribeau and Jayson Lane. Elev. = 157.41 City Datum

Index of Sheets

Title Sheet	1
Plan/Profile - Line 1	2-4
Plan/Profile - Line 1A	5
Plan/Profile - Lines 2,2A & 2B	6
Manhole Adjustment Detail	7
Standard Manhole Detail*	8
Special Manhole Detail	9
Copy of Plot	10



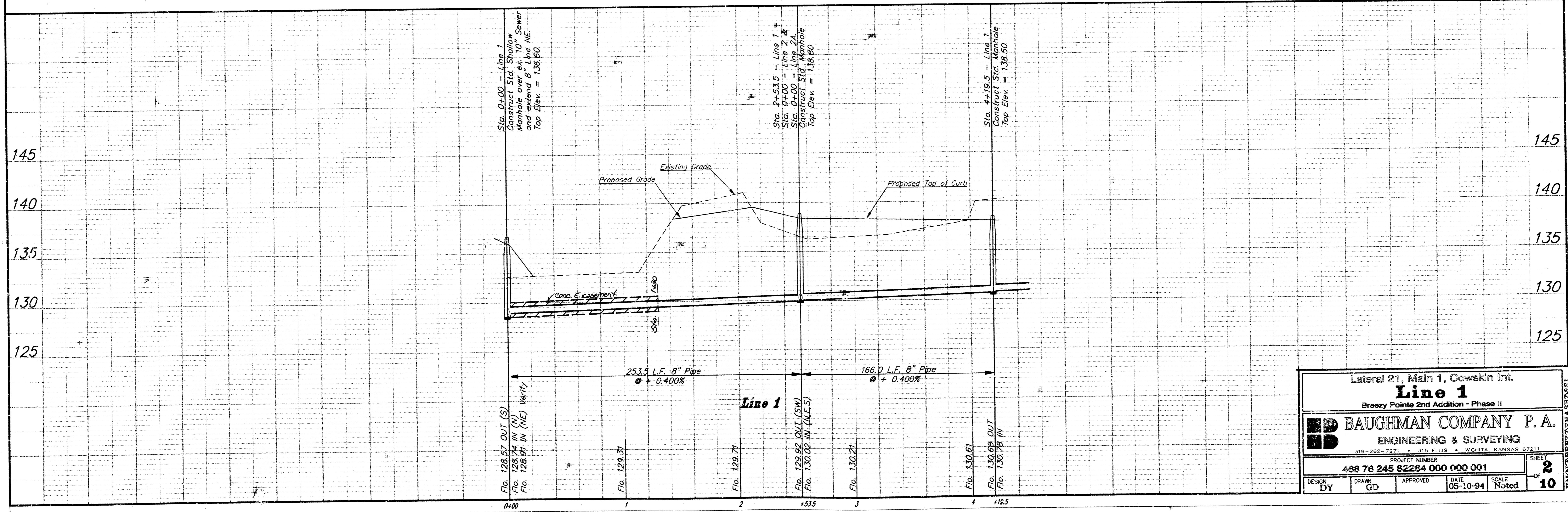
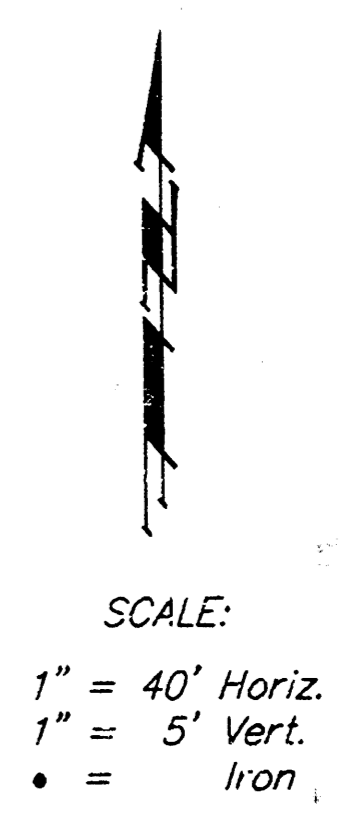
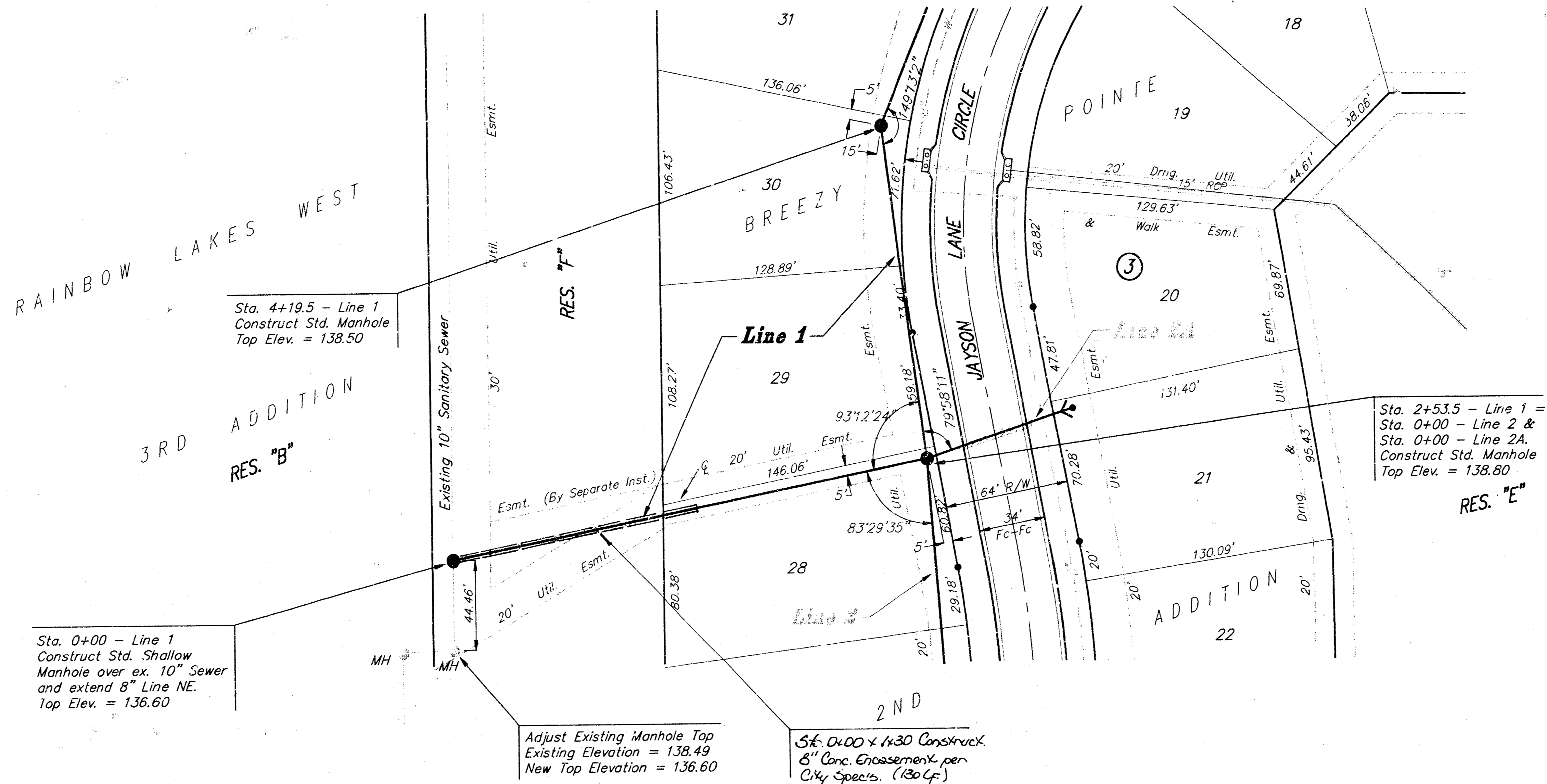
Booked
PER PLAN
12-98-RWL

SCALE: 1" = 150'

BAUGHMAN COMPANY P. A.
ENGINEERING & SURVEYING
316/262-7271 • 315 ELLIS • WICHITA, KANSAS 67211

Benchmarks:

1. "□" Top of Curb on N.W. Corner Lot 38, Blk. 5 of Bay Country Estates. Elev. = 151.48 City Datum
2. "□" Top of Curb East End of Return N.E. Corner of Meribecu and Jayson Lane. Elev. = 157.41 City Datum



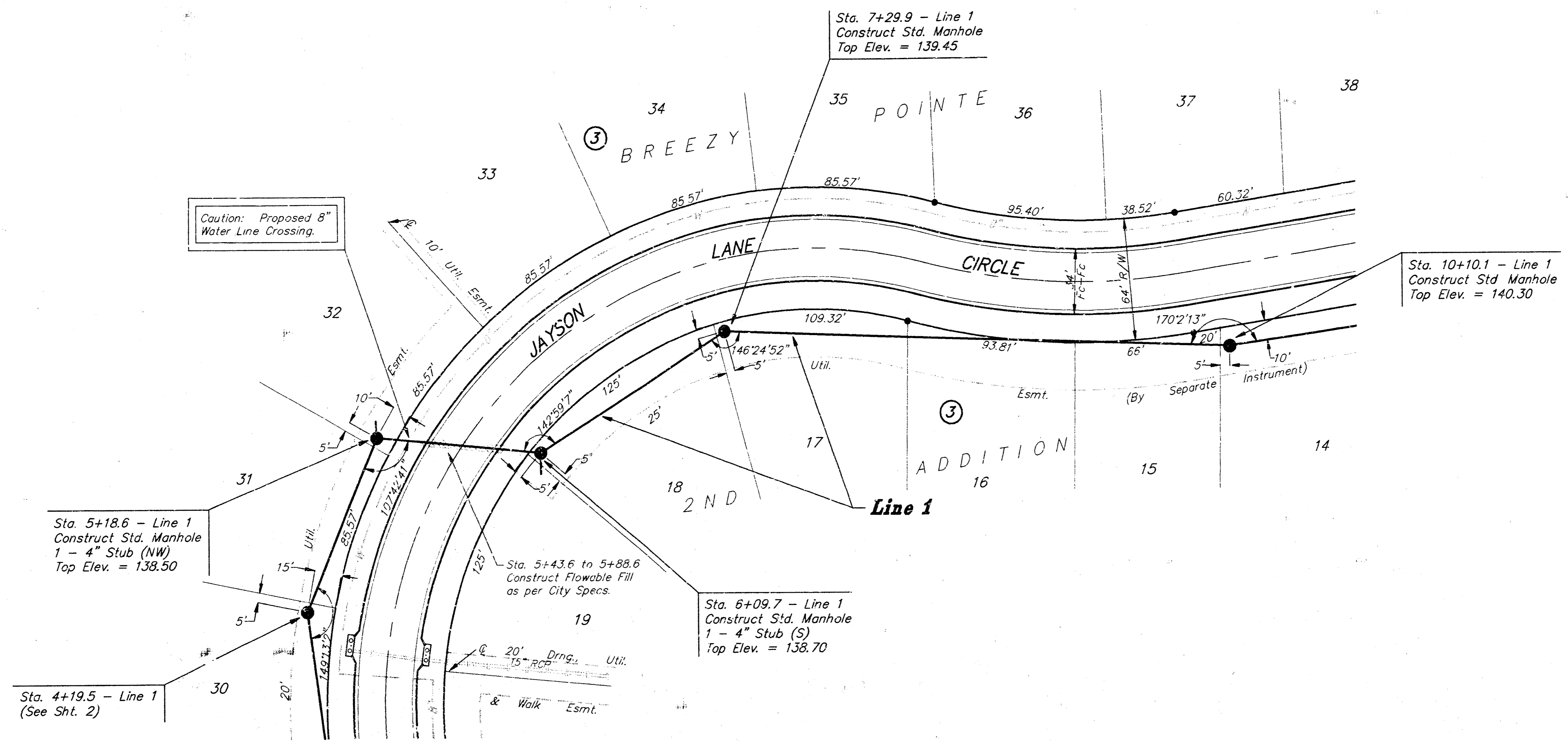
Lateral 21, Main 1, Cowskin Int.
Line 1
 Breezy Pointe 2nd Addition - Phase II

BAUGHMAN COMPANY P. A.
 ENGINEERING & SURVEYING
 316-262-7271 • 315 ELLIS • WICHITA, KANSAS 67211

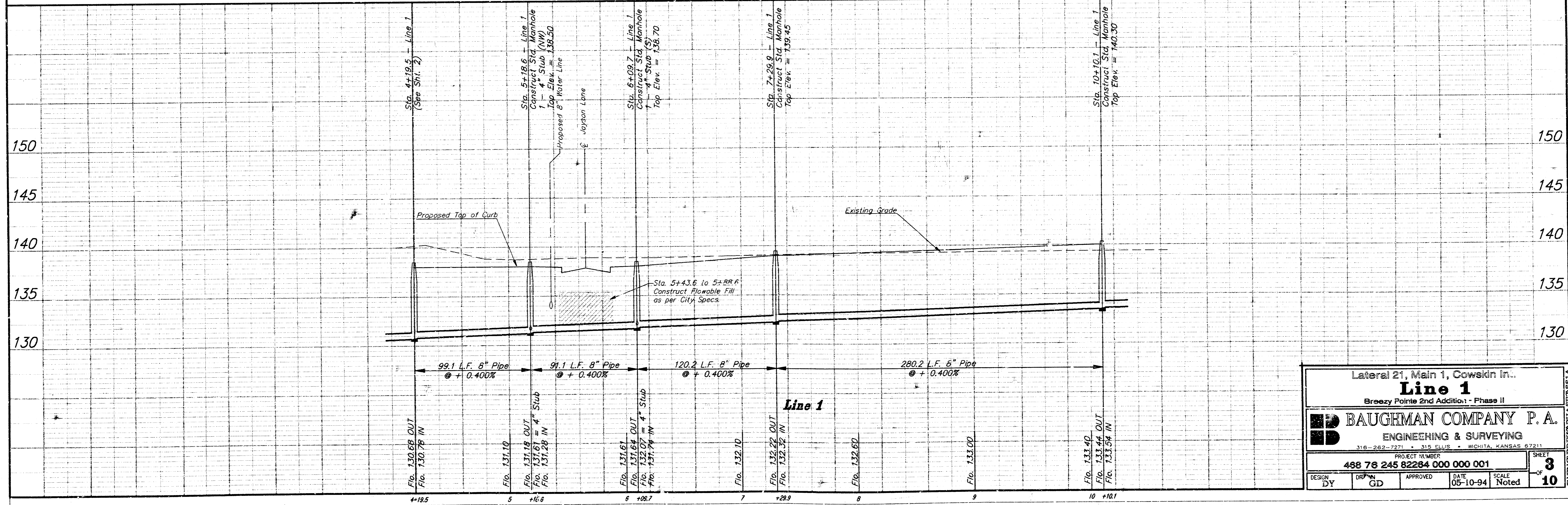
PROJECT NUMBER: 468 78 245 82264 000 000 001
 SHEET 2 OF 10
 DESIGN: DY DRAWN: GD APPROVED: DATE: 05-10-94 SCALE: Noted

Benchmarks:

1. "□" Top of Curb on N.W. Corner Lot 38, Blk. 5 of Bay Country Estates. Elev. = 151.48 City Datum
2. "□" Top of Curb East End of Return N.E. Corner of Meribean and Jayson Lane. Elev. = 157.41 City Datum



SCALE:
 1" = 40' Horiz.
 1" = 5' Vert.
 • = Iron



Lateral 21, Main 1, Cowskin In..
Line 1
 Breezy Pointe 2nd Addition - Phase II

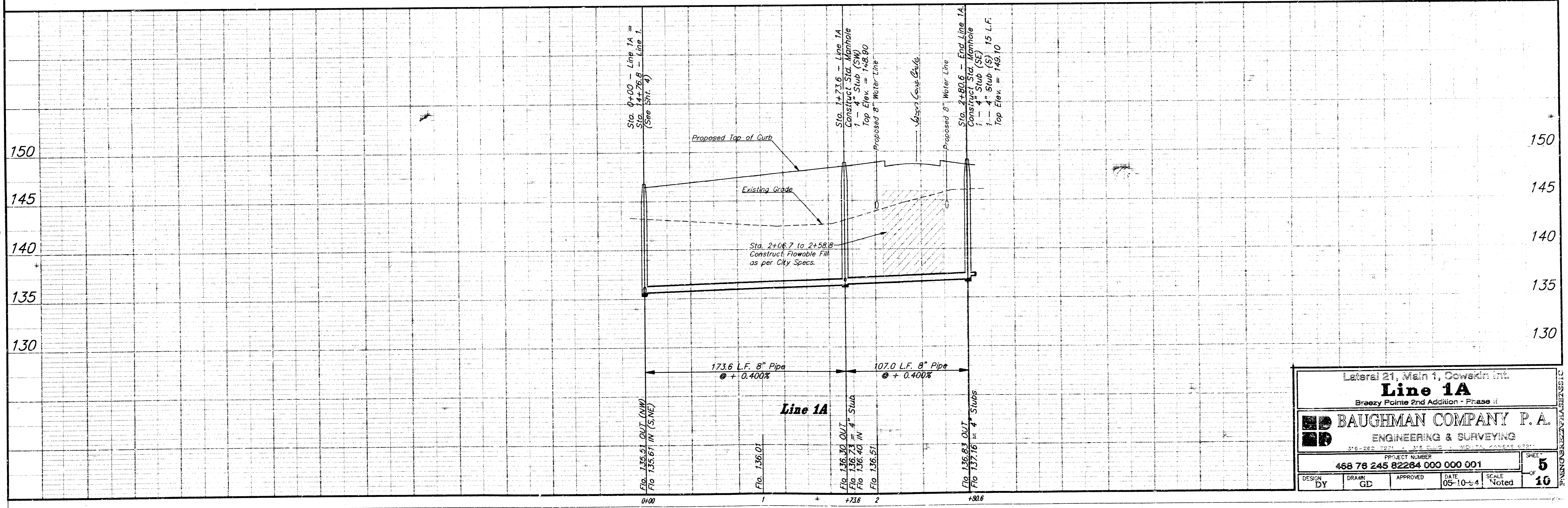
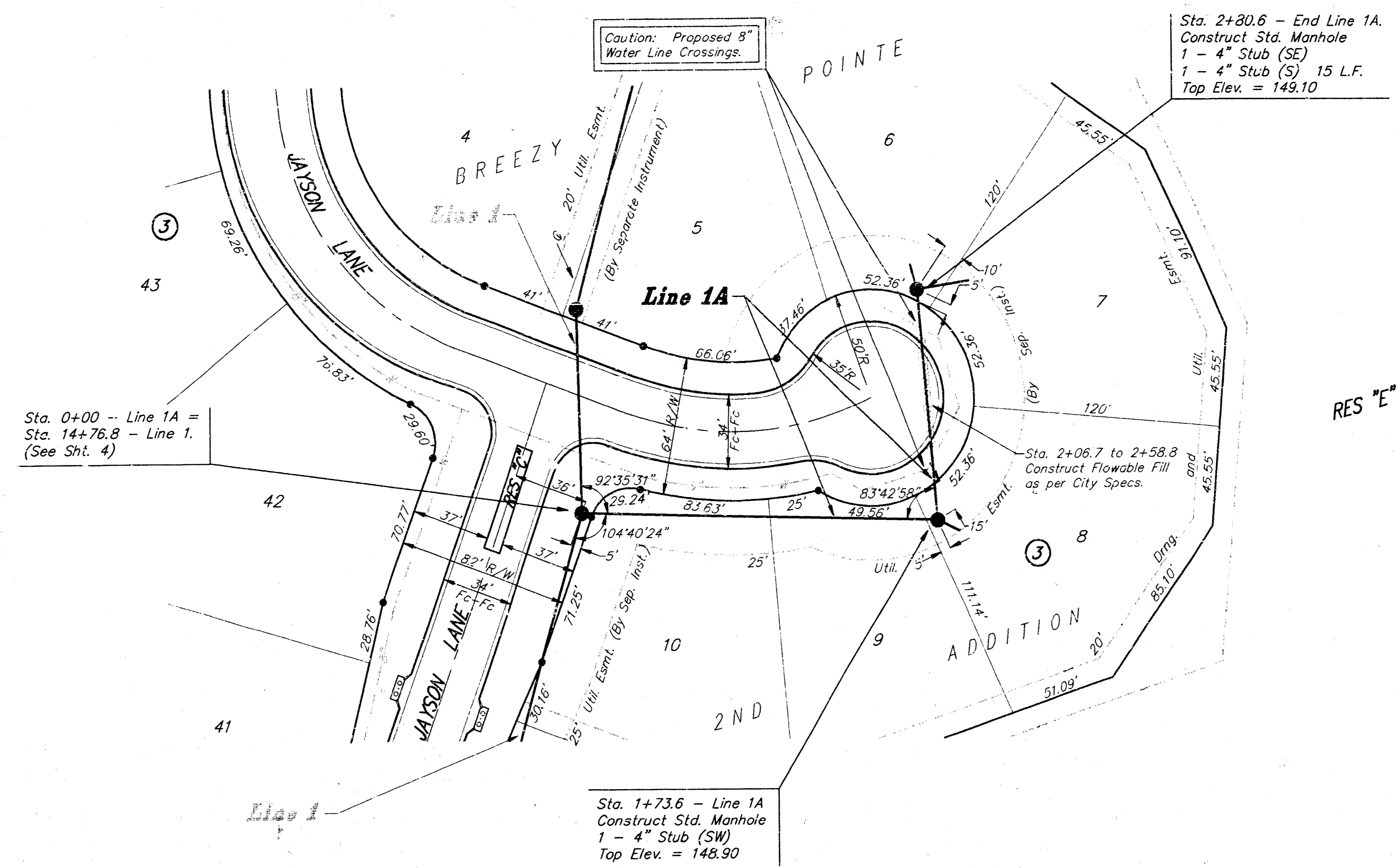
BAUGHMAN COMPANY P. A.
 ENGINEERING & SURVEYING
 316-262-7271 • 318 ELLIS • WICHITA, KANSAS 67211

PROJECT NUMBER: 468 78 245 82284 000 000 001
 SCALE: Noted
 SHEET: 3 OF 10

DESIGN: DY
 CHECK: GD
 APPROVED: [Signature]
 DATE: 05-10-94

Benchmarks:

1. "□" Top of Curb on N.W. Corner Lot 38, Blk. 5 of Bay Country Estates. Elev. = 151.48 City Datum
2. "□" Top of Curb East End of Return N.E. Corner of Meribean and Jayson Lane. Elev. = 157.41 City Datum



Lateral 21, Main 1, Cowskin Int.
Line 1A
Breezy Pointe 2nd Addition - Phase II

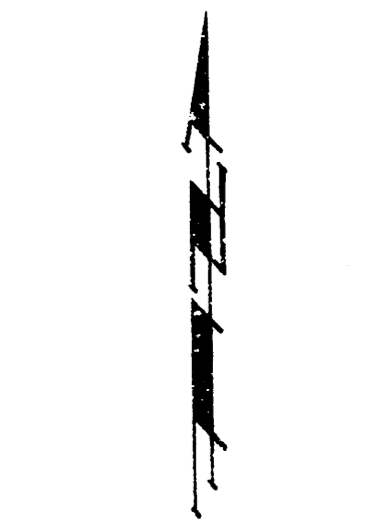
BAUGHMAN COMPANY P.A.
ENGINEERING & SURVEYING

PROJECT NUMBER: 468 78 245 82264 000 000 001

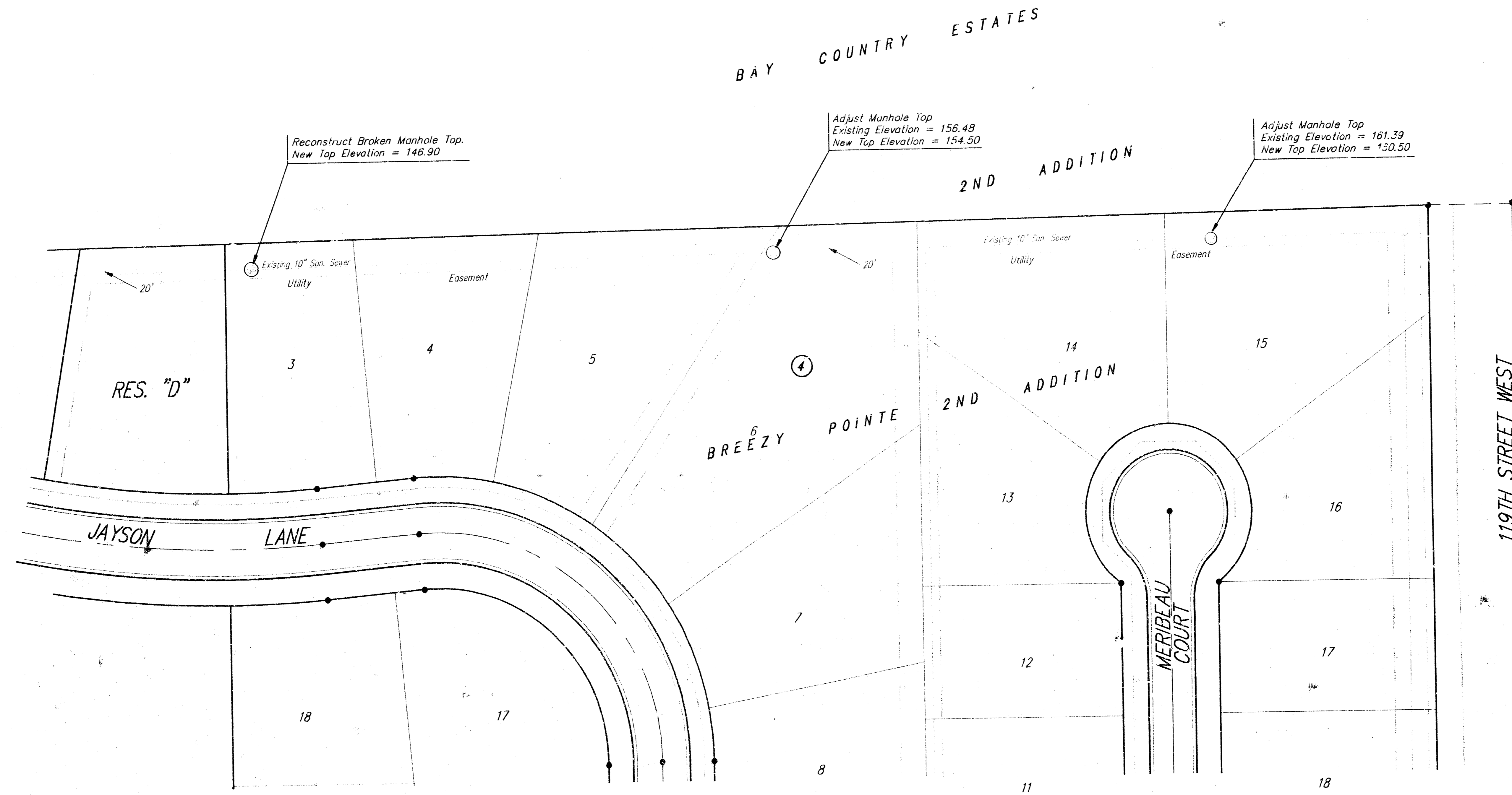
DATE: 05-10-11 SCALE: Noted SHEET: 5 OF 10

Benchmarks:

1. "13" Top of Curb East End of Return N.E. Corner of Meribeau and Jayson Lane. Elev. = 157.41 City Datum
2. "□" Top of Curb 95' S. of C. of Meribeau & 20' W. C. of 119th Street. Elev. = 158.63 City Datum



SCALE: 1" = 40'
• = Iron

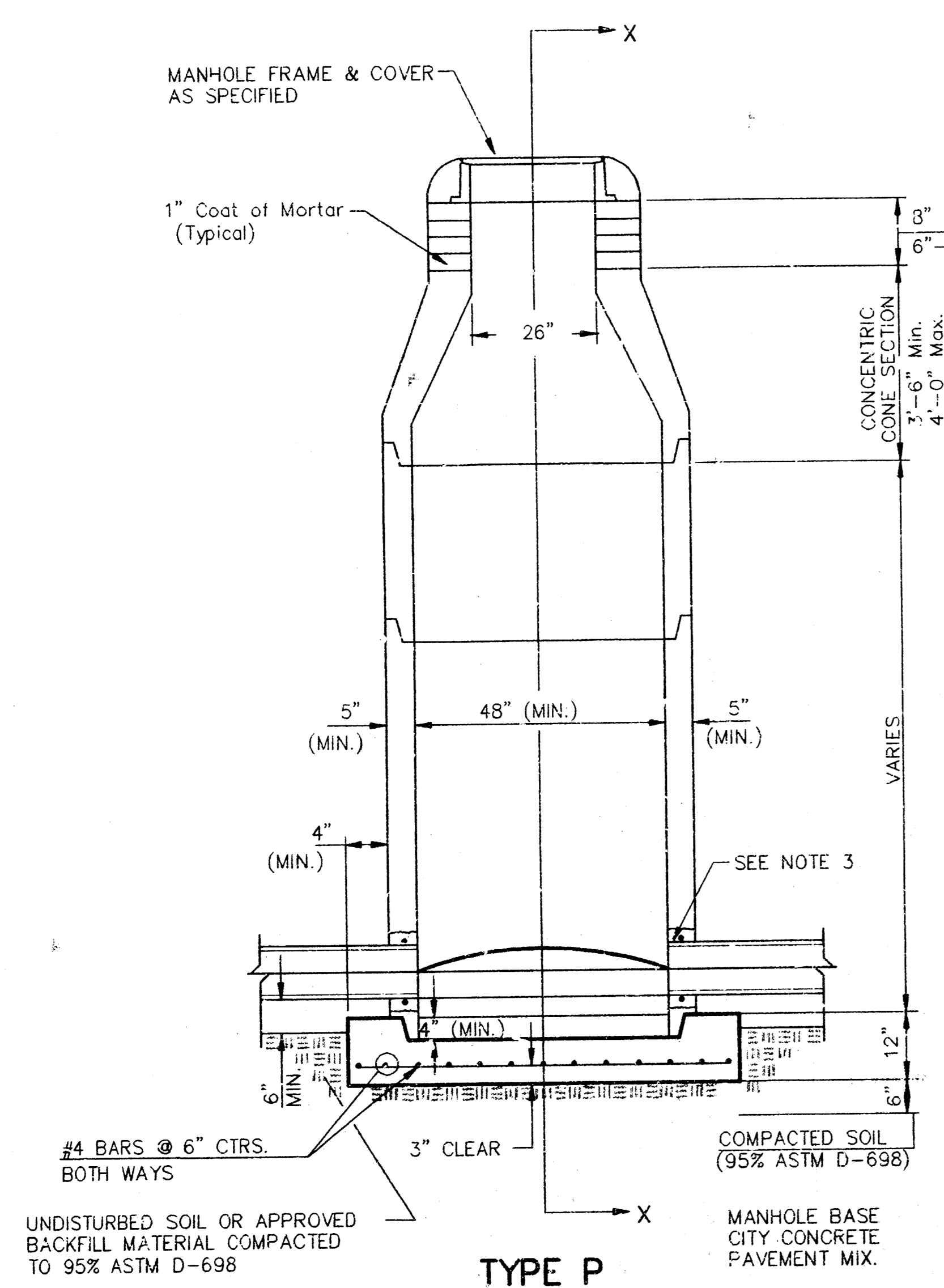


□ BM#1

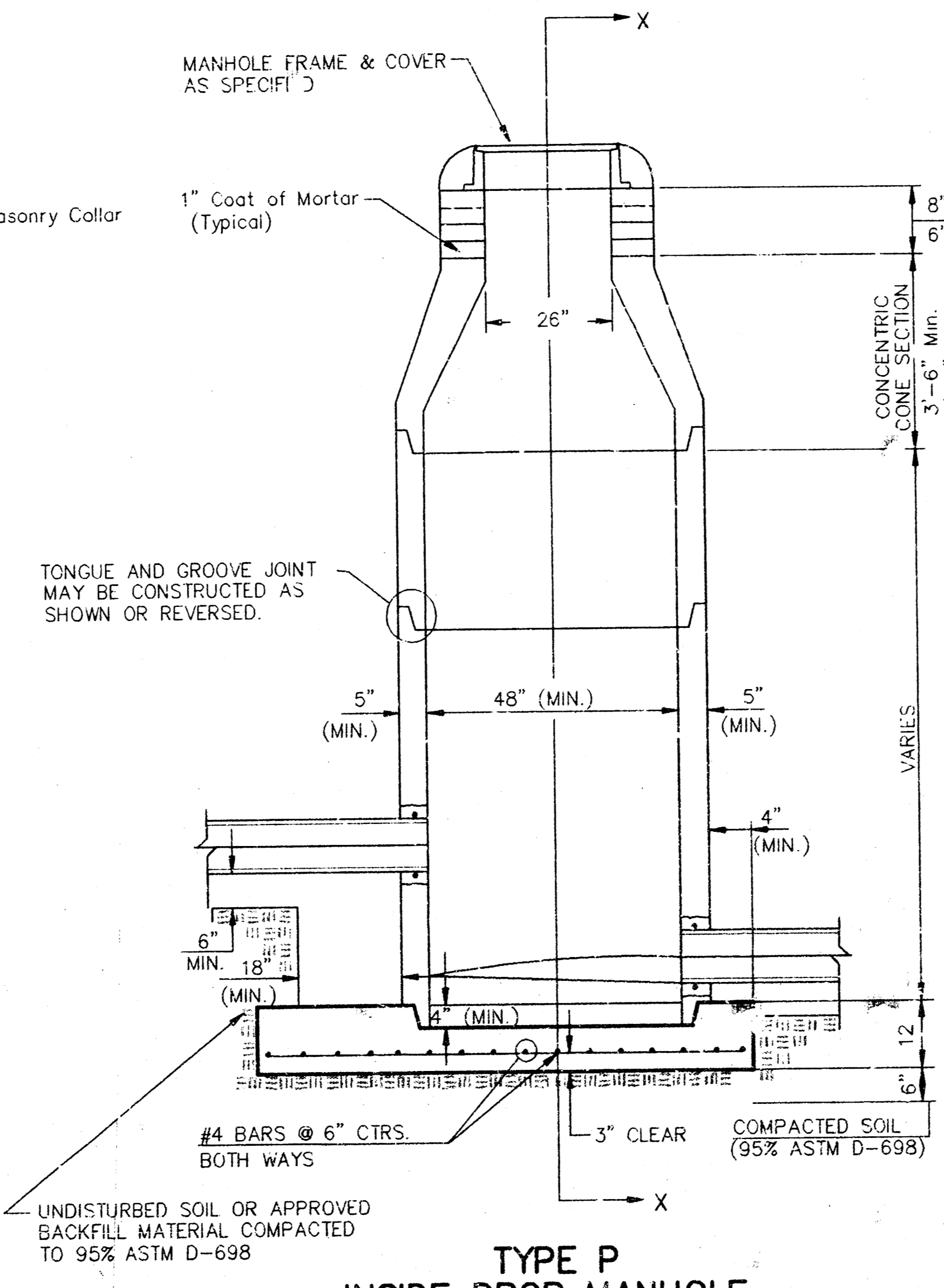
□ BM#2

Manhole Adjustment Detail				
Breezy Pointe 2nd Addition				
BAUGHMAN COMPANY P. A. ENGINEERING & SURVEYING <small>316/262-7271 • 315 ELLIS • WICHITA, KANSAS 67211</small>				
PROJECT NUMBER				SHEET
468 76 245 82264 000 000 001				7
OF				10
DESIGN	DRAWN	UTIL. CHECK'D	DATE	SCALE
HEW/DY	GD		05-10-94	Noted

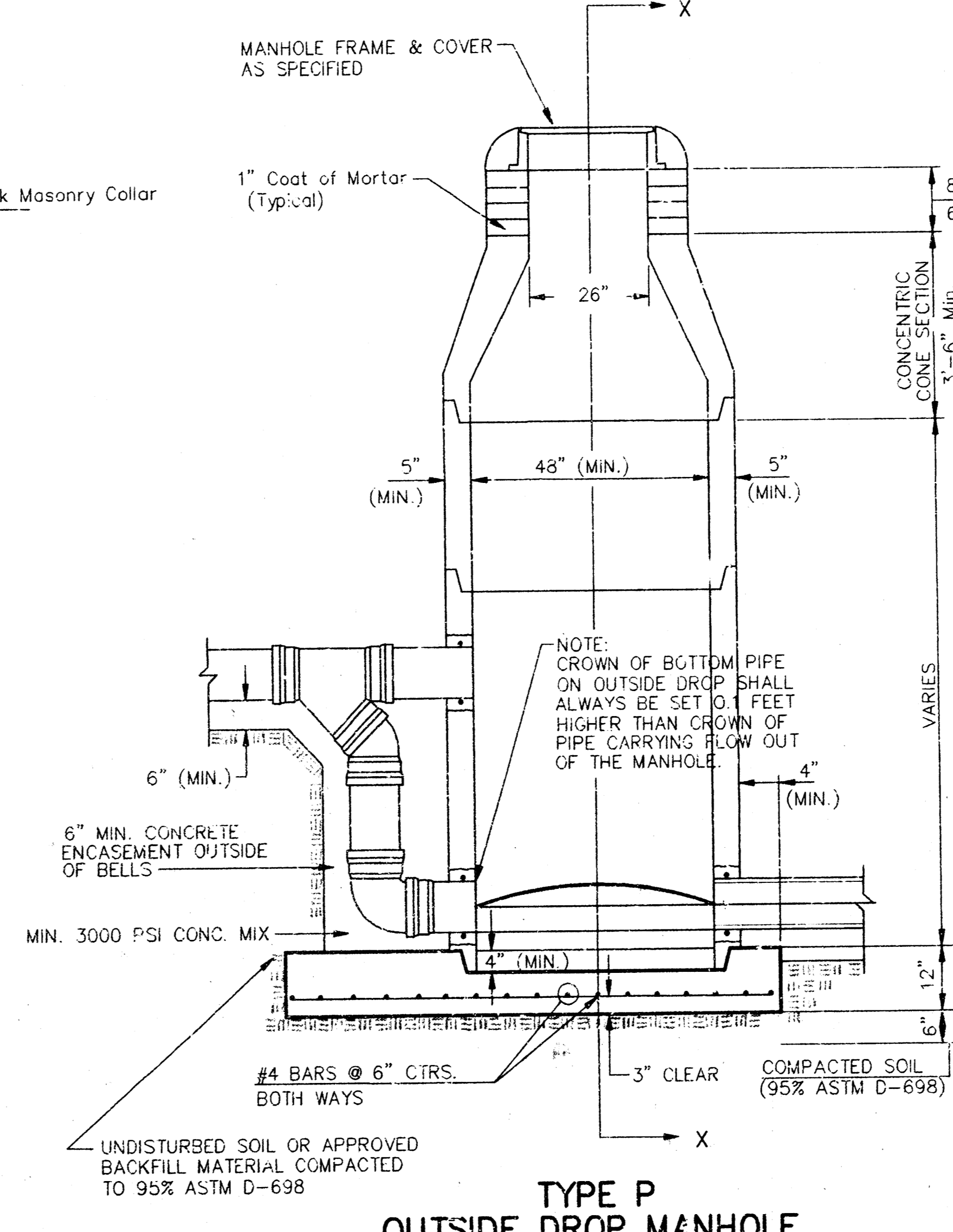
SEWER APPURTENANCES DETAILS



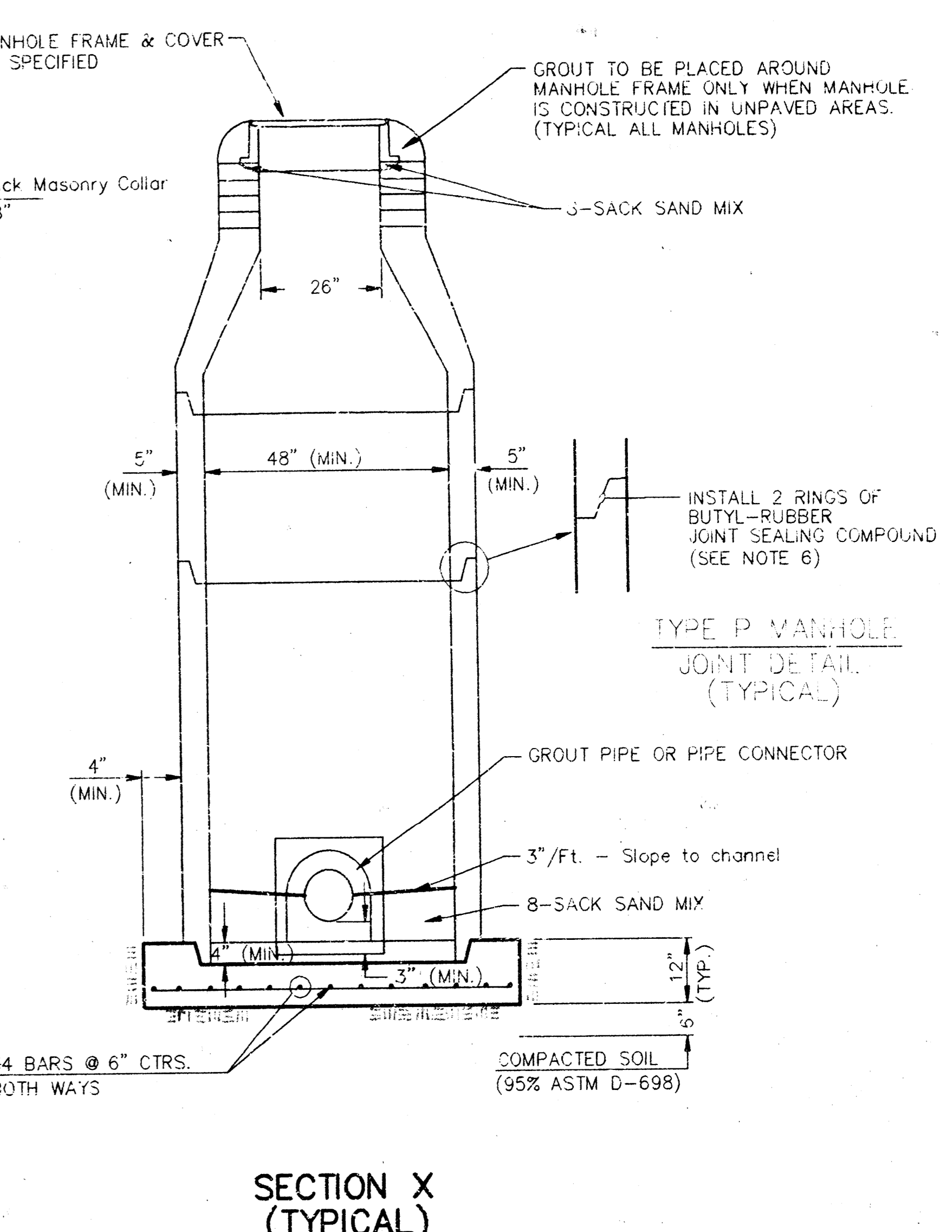
TYPE P STANDARD MANHOLE



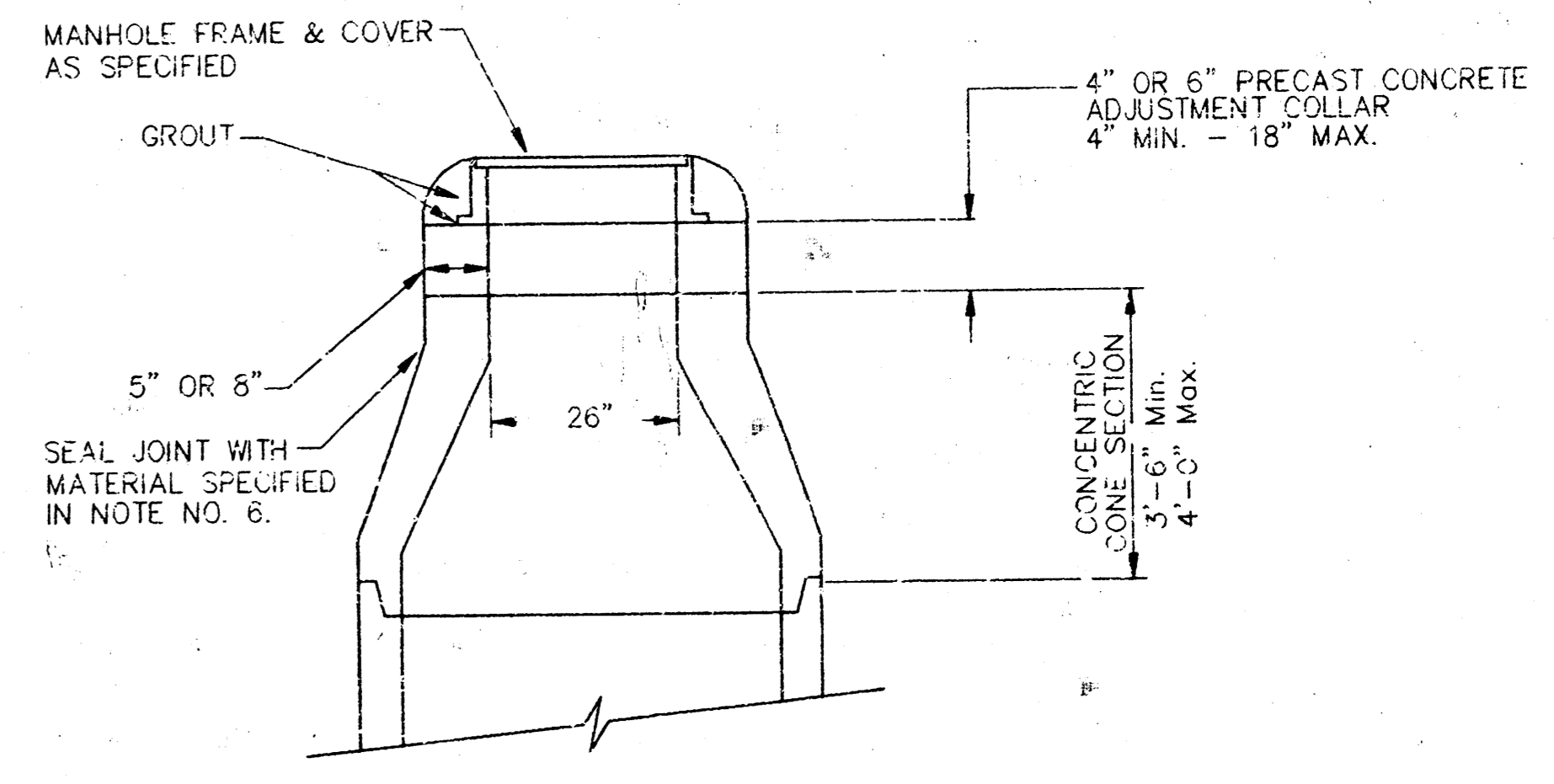
TYPE P INSIDE DROP MANHOLE



TYPE P OUTSIDE DROP MANHOLE



SECTION X (TYPICAL)



ALTERNATE CONSTRUCTION IN UNPAVED AREAS

- GENERAL NOTES**
PRECAST MANHOLE NOTES
1. ALL PRECAST CONCRETE MANHOLE SECTIONS SHALL CONFORM TO THE LATEST REVISIONS OF A.S.T.M. C478 AS MODIFIED BY THE SPECIFICATIONS.
 2. NON-SHRINK GROUT SHALL BE NON-METALLIC TYPE.
 3. APPROVED FLEXIBLE WATERSTOP GASKETS SHALL BE INSTALLED TO JOIN THE SEWER TO THE MANHOLE WALL WHEN A.B.S. COMPOSITE PIPE OR P.V.C. PIPE IS USED. FOR OTHER TYPES OF PIPE THE SEWER SHALL BE GROUTED IN PLACE WITH NON-SHRINK GROUT. THE SEWER PIPE SHALL BE SUPPORTED WITH CONCRETE ENCASEMENT A MINIMUM OF 3 FEET FROM THE MANHOLE WALL AND TO THE FIRST JOINT FOR V.C.P. SUCH THAT THE JOINT REMAINS FLEXIBLE.
 4. ALL INSIDE SURFACES OF THE CONCRETE MANHOLE WHICH WOULD BE EXPOSED TO SEWER GAS SHALL BE COATED WITH 2 COATS THEMCO SERIES 66 HI-BUILD EPOXYLINE, DRY THICKNESS OF 8 MILS (MIN.).
 5. EXTERIOR MANHOLE WALLS SHALL BE COATED WITH 1 COAT MOBILARMA 833 BITUMINOUS COATING.
 6. JOINT SEALING COMPOUND SHALL BE KENT SEAL NO. 2 OR APPROVED EQUAL.
 7. PRECAST MANHOLES SHALL BE SET AT LEAST 4 INCHES INTO THE MANHOLE BASE.
 8. TOP OF MANHOLE FLOOR SLAB SHALL BE AT LEAST 3 INCHES BELOW THE FLOW LINE OF THE OUTLET PIPE TO INSURE SUFFICIENT MINIMUM THICKNESS OF SHAPED INVERT.
 9. LIFTING HOLES SHALL BE FILLED WITH NON-SHRINK GROUT AND THE INTERIOR SURFACE COATED AS SPECIFIED.
 10. MORTAR USED IN MASONRY CONSTRUCTION SHALL CONTAIN 8 SACKS OF CEMENT PER CUBIC YARD. CONCRETE USED IN MANHOLE BASES SHALL CONFORM TO THE REQUIREMENTS OF CONCRETE FOR CONCRETE PAVEMENT CONSTRUCTION AS SPECIFIED IN THE CITY STANDARD PAVING SPECIFICATIONS USING CITY CONCRETE PAVEMENT MIX WITHOUT AIR ENTRAINING ADMIXTURE. MORTAR SHALL BE PLACED AROUND THE MANHOLE RING AS SHOWN ON THE DRAWINGS WHEN MANHOLES ARE CONSTRUCTED IN UNPAVED AREAS. MANHOLES CONSTRUCTED WHERE PIPE SIZES ARE SMALLER THAN 24" SHALL HAVE AN INSIDE DIAMETER OF 4". MANHOLES CONSTRUCTED WHERE PIPE SIZES ARE 24" OR LARGER SHALL HAVE AN INSIDE DIAMETER OF 5". COMPLETED MANHOLE SHALL BE WITHOUT LEAKS AND WATER TIGHT.

11. REINFORCING STEEL SHALL BE INSTALLED IN THE MANHOLE BASES AND SHALL CONSIST OF NO. 4 BARS PLACED ON 6" CENTERS IN BOTH DIRECTIONS. THE MANHOLE BASE REINFORCEMENT SHALL BE PLACED AT LEAST 3" ABOVE THE BOTTOM OF THE MANHOLE BASE. ALL COSTS FOR FURNISHING AND INSTALLING REINFORCING STEEL SHALL BE INCLUDED IN THE UNIT PRICE BID FOR THE MANHOLE.
12. OPENINGS SHALL BE CUT INTO THE MANHOLE WALL WHEN OUTSIDE DROPS ARE CONSTRUCTED ON EXISTING MANHOLES. SUCH OPENINGS CUT INTO EXISTING MANHOLES SHALL BE AS SMALL AS PRACTICAL TO FACILITATE INSTALLING AND GROUTING THE NEW PIPE IN PLACE. WATERSTOP GASKETS SHALL BE USED WITH P.V.C. AND A.B.S. COMPOSITE PIPE. THE NEW PIPE SHALL BE GROUTED INTO THE OPENING USING AN APPROVED NONSHRINK GROUT FOR THE FULL MANHOLE WALL THICKNESS. THE EXTERIOR OF THE COMPLETED CONNECTION SHALL BE SEALED WITH AN APPROVED BITUMINOUS COATING SUCH THAT THE CONNECTION WILL BE WATER TIGHT. FLOOR OF MANHOLE SHALL BE MODIFIED TO FORM NEW FLOW CHANNEL FOR THE NEW CONNECTION AS INDICATED BY THE DRAWING. THIS WORK, INCLUDING MODIFICATION OF MANHOLE FLOOR, SHALL BE PAID FOR AT THE UNIT PRICE BID FOR OUTSIDE DROP STACK CONSTRUCTED ON EXISTING MANHOLE.
13. THE FLOORS OF ALL MANHOLES SHALL BE SHAPED WITH FLOW CHANNELS SUCH THAT THE MANHOLES WILL BE SELF CLEANING AND FREE OF AREAS WHERE SOLIDS COULD BE DEPOSITED AS SEWAGE FLOWS THROUGH THE MANHOLE FROM ALL INLET PIPES TO THE OUTLET PIPE. FLOW CHANNELS SHALL BE FORMED TO MATCH THE BOTTOM HALVES OF THE INFLOWING PIPES AND THE OUTFLOWING PIPE AS SHOWN BY THE DRAWINGS EXCEPT FOR INSIDE DROP MANHOLES. FLOW CHANNELS FOR INSIDE DROP MANHOLES SHALL BE CONSTRUCTED AS INDICATED BY THE DRAWING. MANHOLE FLOORS SHALL HAVE SLOPES OF 3 INCHES PER FOOT IN THE AREAS OUTSIDE OF THE FLOW CHANNELS SLOPED TOWARD THE FLOW CHANNELS. PIPES LAID THROUGH MANHOLES SHALL HAVE THE TOP HALF REMOVED TO HEAT LINES FOR THE FULL INSIDE DIAMETER OF THE MANHOLE. MANHOLE FLOORS SHALL THEN BE SHAPED AROUND THE BOTTOM HALF OF THE PIPE WHICH FORMS THE FLOW CHANNEL.
14. PIPES INSTALLED WITHIN THE EXCAVATION MADE FOR THE MANHOLE SHALL BE CRADLED WITH CONCRETE TO THE LIMITS OF THE MANHOLE EXCAVATION. WHEN CLAY PIPE IS USED, THE CRADLE SHALL EXTEND TO THE FIRST JOINT OUTSIDE THE MANHOLE. THE CRADLE SHALL BE TERMINATED AT THE CLAY PIPE JOINT IN A MANNER WHICH WILL MAINTAIN THE FLEXIBILITY OF THE JOINT. COST OF CRADLE WITHIN MANHOLE EXCAVATION OR TO CLAY PIPE JOINTS ADJACENT TO MANHOLE SHALL BE INCLUDED IN THE UNIT PRICE BID FOR THE MANHOLE.

15. MANHOLE COVER CASTINGS AND MANHOLE FRAME CASTINGS SHALL CONFORM TO THE REQUIREMENTS AS INDICATED IN THE STANDARD SPECIFICATIONS AND AS SHOWN IN THE STANDARD DETAIL DRAWING.
16. THE VERTICAL DROP IN INSIDE DROP MANHOLES SHALL NOT EXCEED 2' FOR INFLOWING PIPES SIZED 12" OR SMALLER AND 2' FOR INFLOWING PIPES LARGER THAN 12". THE CROWNS OF INFLOWING PIPES SHALL NEVER BE SET LOWER THAN THE CROWN OF THE OUTFLOWING PIPE.
17. STANDARD MANHOLES AND STANDARD INSIDE DROP MANHOLES SHALL BE BID AS STANDARD MANHOLES FOR THE TYPE AND DIAMETER INDICATED. OUTSIDE DROP MANHOLES SHALL BE BID AS STANDARD OUTSIDE DROP MANHOLES FOR THE TYPE AND DIAMETER INDICATED. ALL MANHOLE DIAMETERS WILL BE 4" UNLESS INDICATED OTHERWISE.
18. A BRICK MASONRY COLLAR SHALL BE INSTALLED BETWEEN THE CAST IRON FRAME AND THE CONCENTRIC CONE. THE COLLAR WILL HAVE 8" WALLS AND A VERTICAL HEIGHT OF 6" MINIMUM AND 18" MAXIMUM. A 1" COAT OF MORTAR WILL BE PLASTERED ON THE OUTSIDE OF THE COLLAR. THE USE OF PRE-CAST CONCRETE SPACERS FOR MANHOLE TOP ADJUSTMENT IS ALSO ALLOWED.

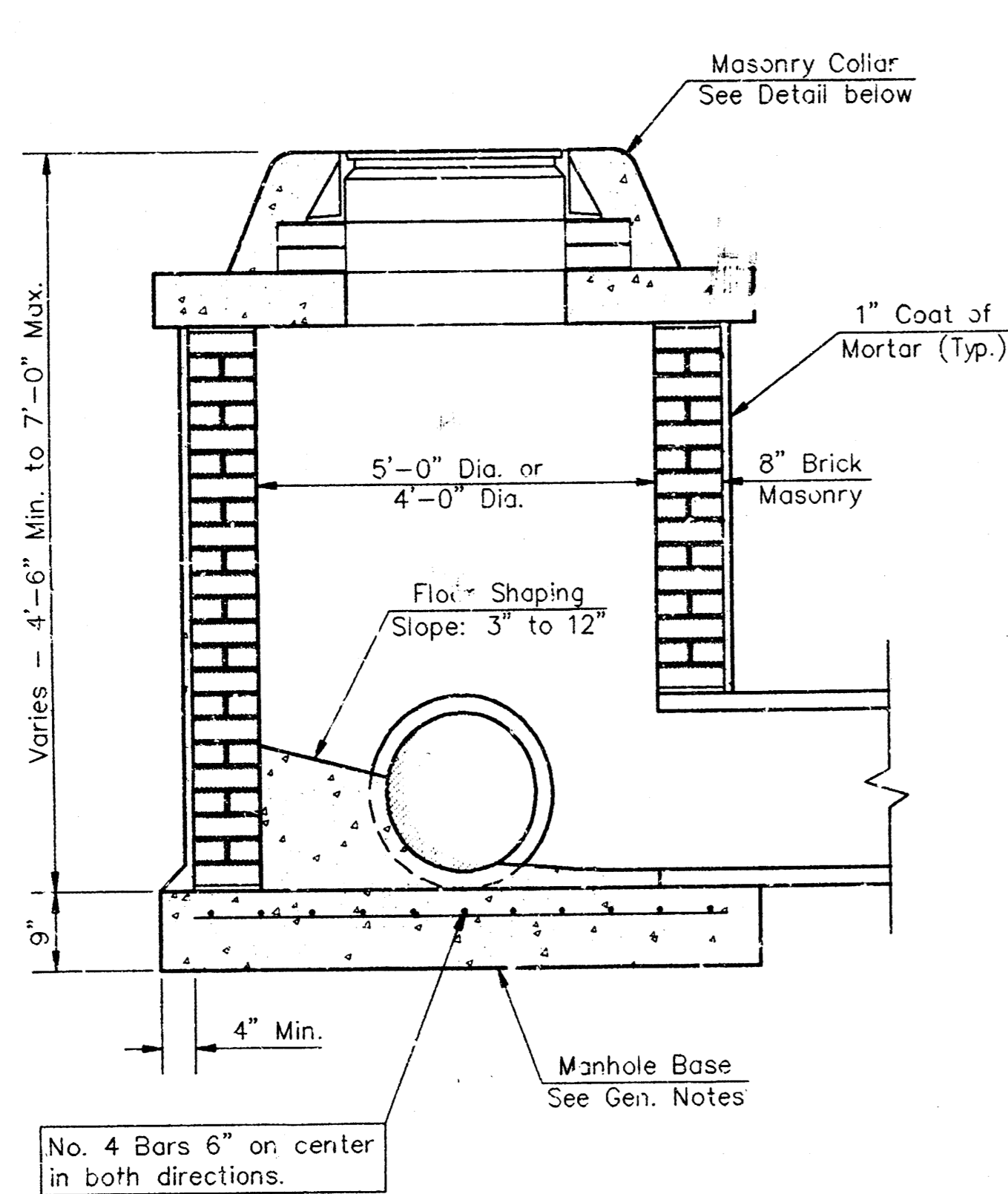
CITY OF WICHITA, KANSAS
STANDARD MANHOLE DETAILS
SEWER APPURTENANCES DETAILS

BAUGHMAN COMPANY P. A.
ENGINEERING & SURVEYING
316/262-7271 • 315 ELLIS • WICHITA, KANSAS 67211

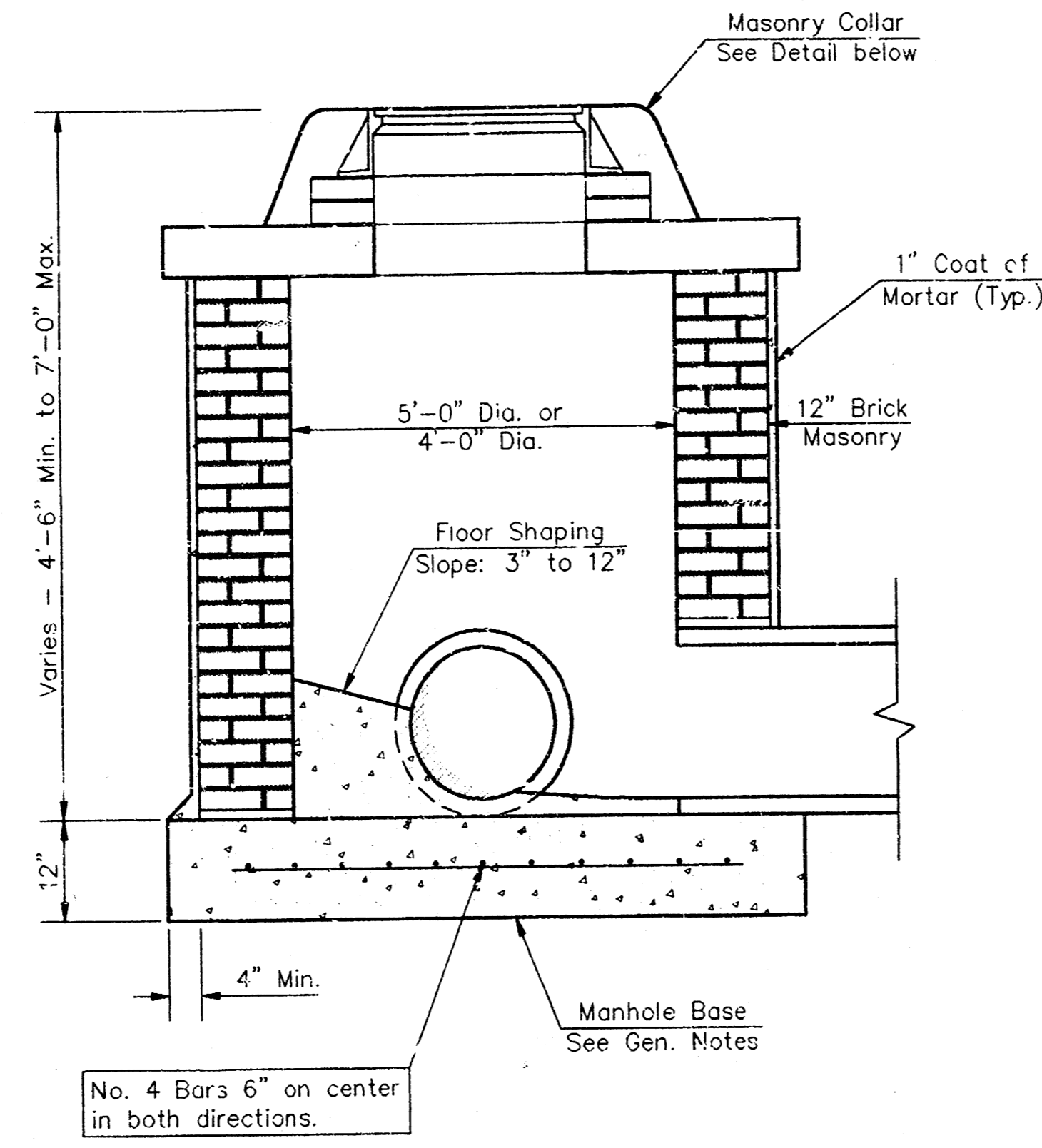
PROJECT NUMBER
468 76 245 32264 000 000 001

DESIGN DRAWN APPROVED DATE 05-10-94 SCALE

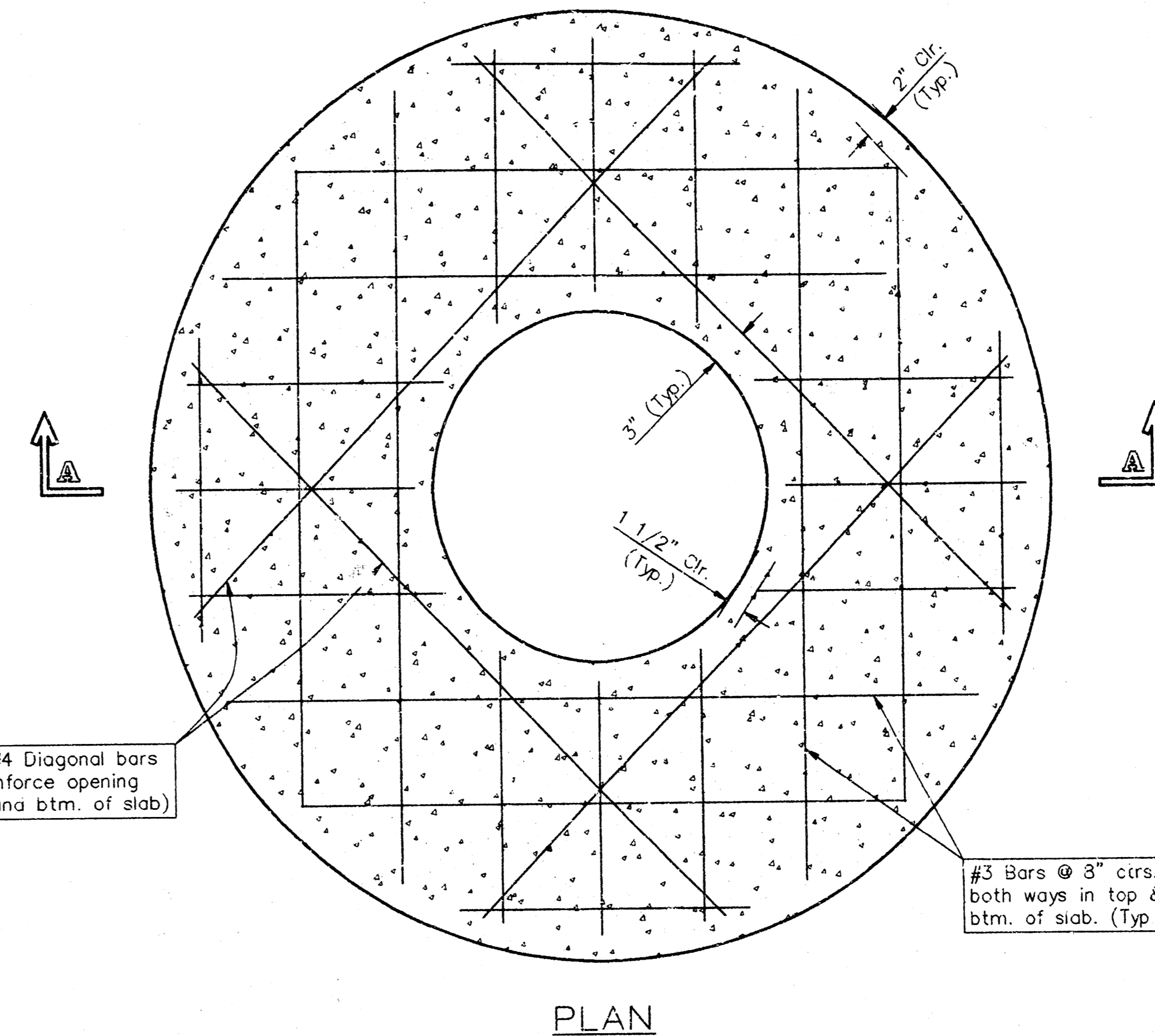
REV. **NOV. 1993** SHEET **8** OF **10**



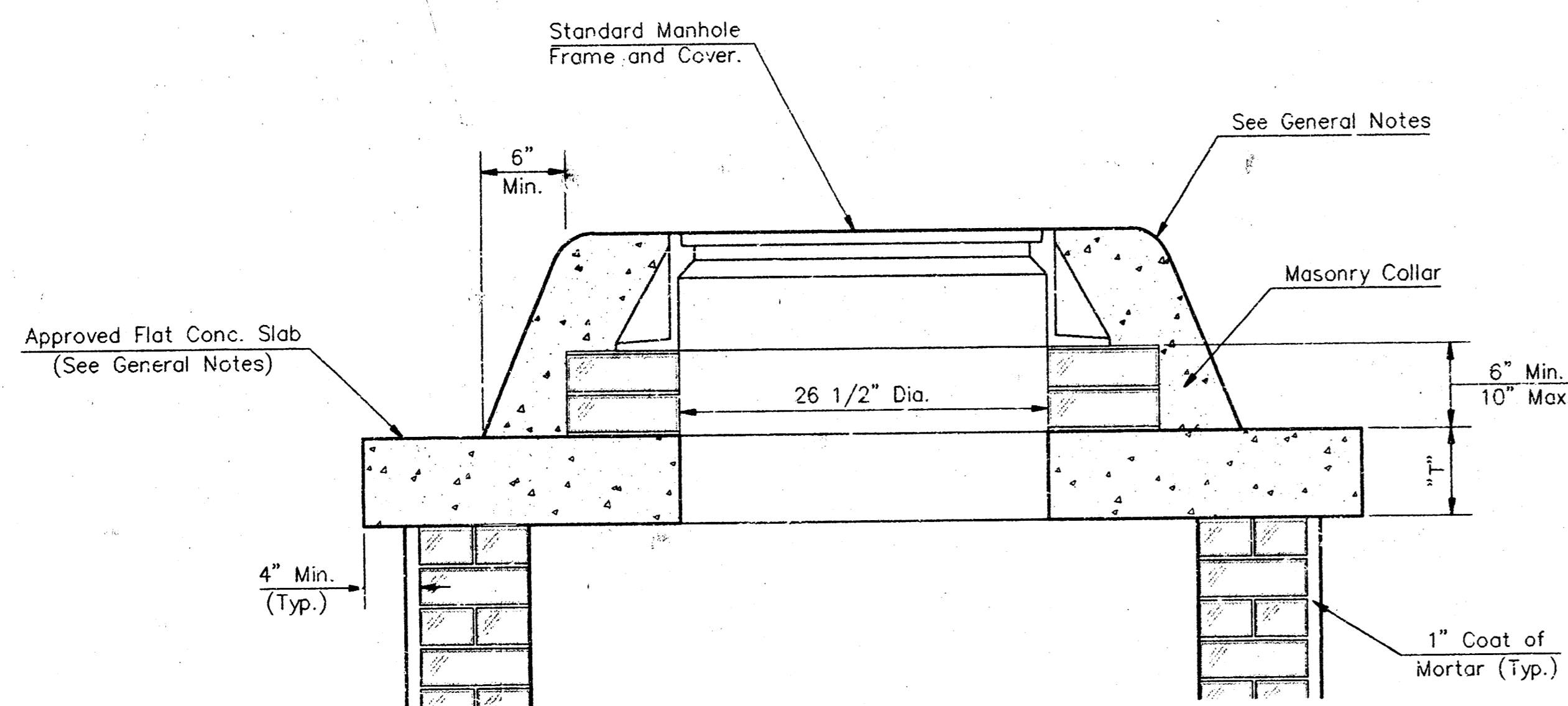
SHALLOW TYPE "A" MANHOLE



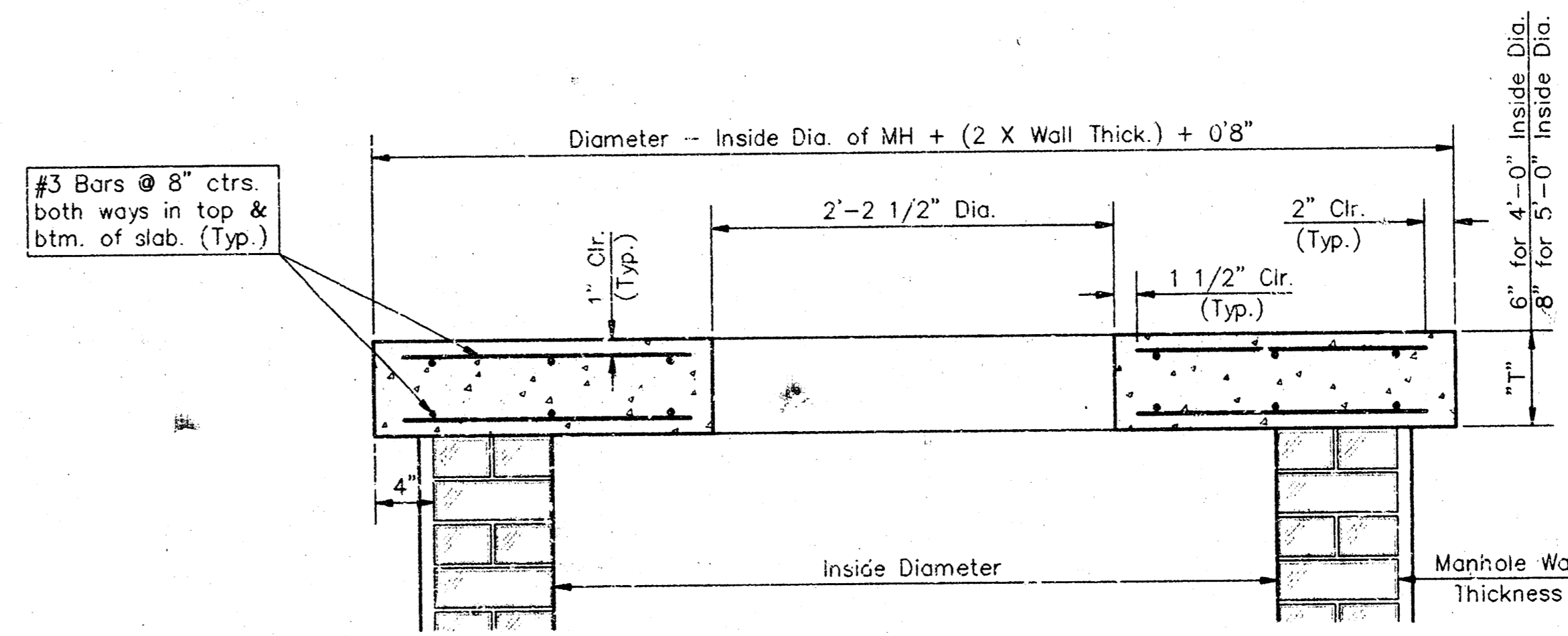
SHALLOW TYPE "B" MANHOLE



PLAN

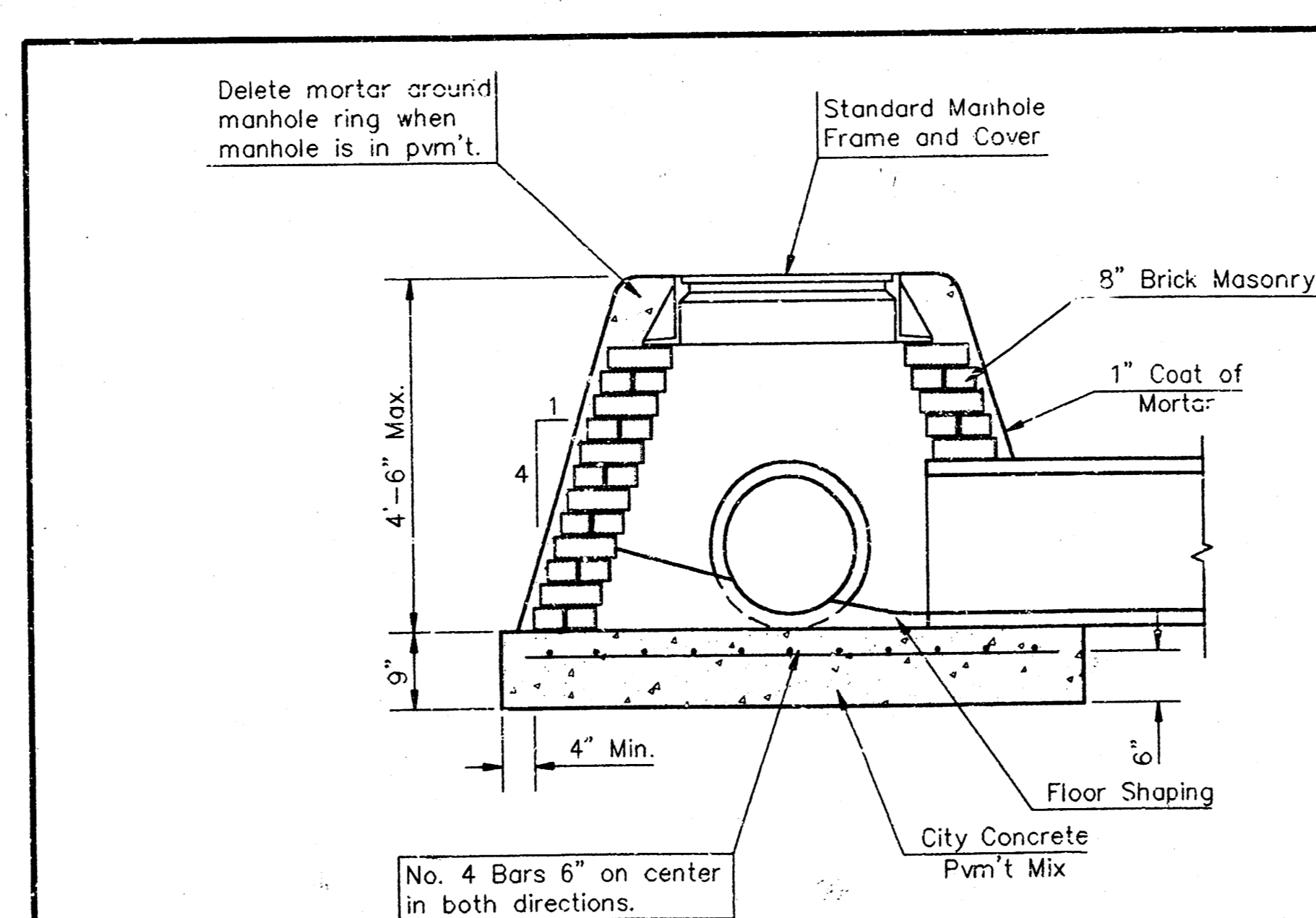


MASONRY COLLAR DETAIL

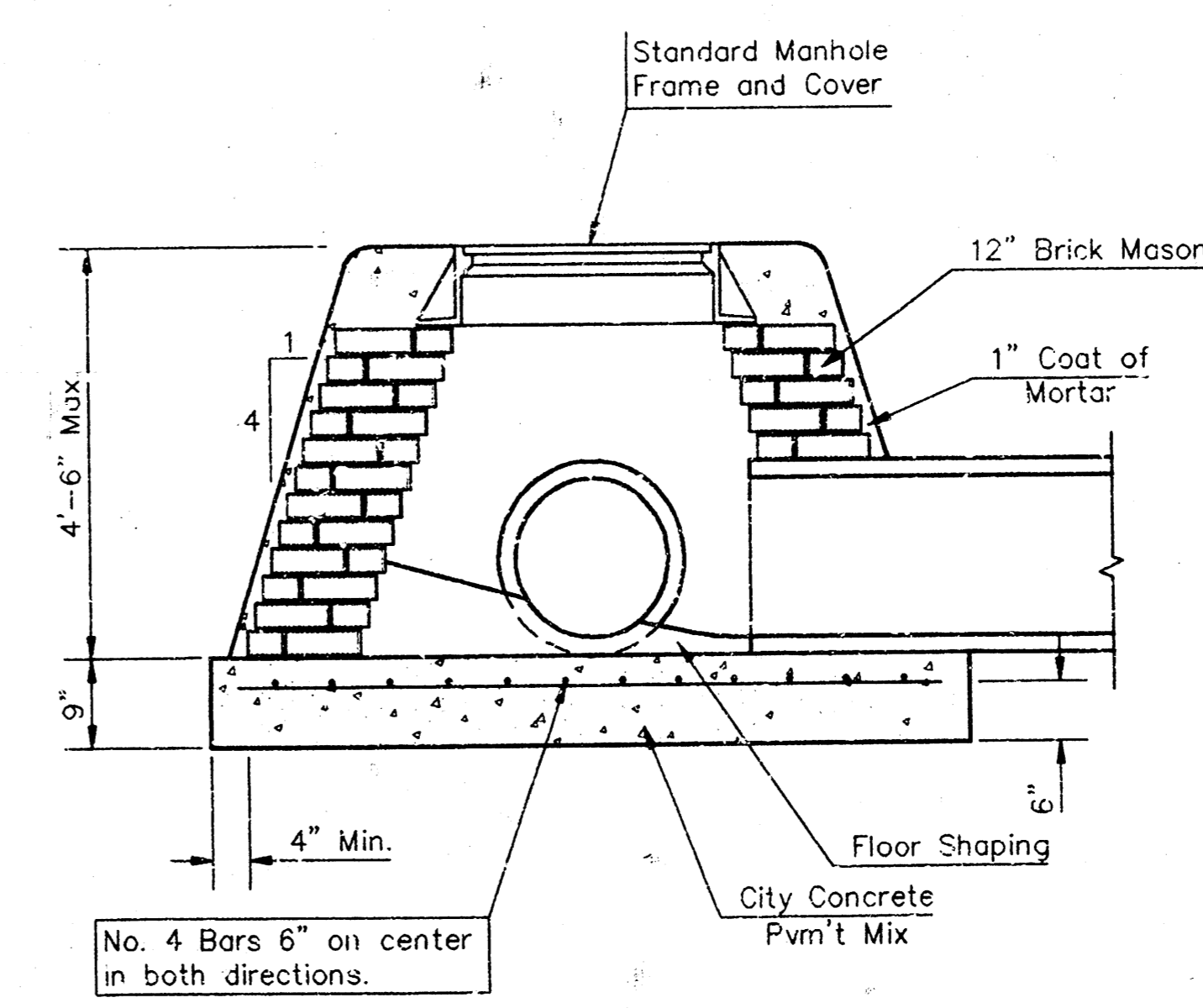


SECTION A-A

FLAT CONCRETE SLAB DETAILS



SPECIAL SHALLOW TYPE "A" MANHOLE



SPECIAL SHALLOW TYPE "B" MANHOLE

GENERAL NOTES

- Mortar used in masonry construction shall contain 8 sacks of cement per cubic yard. Concrete used in manhole bases shall conform to the requirements of concrete for concrete pavement construction as specified in the city standard paving specifications using city concrete cement mix without air entraining admixture. Mortar shall be placed around the manhole ring as shown on the drawings when manholes are constructed in unpaved areas. Type "A" shallow manholes can be used on sewers when the manhole is not located within public street pavement. Manholes constructed where pipe sizes are smaller than 24" shall have an inside diameter of 4'. Manholes constructed where pipe sizes are 24" or larger shall have an inside diameter of 5'. Completed manhole shall be without leaks and water tight.
- Reinforcing steel shall be installed in the manhole bases and shall consist of no. 4 bars placed on 6" centers in both directions. The manhole base reinforcement shall be placed 6" above the bottom of the manhole base. All costs for furnishing and installing reinforcing steel shall be included in the unit price bid for the manhole.
- The floors of all manholes shall be shaped with flow channels such that the manholes will be self cleaning and free of areas where solids could be deposited as sewage flows through the manhole from inlet pipes to the outlet pipe. Flow channels shall be formed to match the bottom halves of the inflowing pipes and the outflowing pipe as shown by the drawings. Manhole floors shall have slopes of 3 inches per foot in the areas outside of the flow channels sloped toward the flow channels. Pipes laid through manholes shall have the top half removed to neat lines for the full inside diameter of the manhole. Manhole floors shall then be shaped around the bottom half of the pipe which forms the flow channel.
- Pipes installed within the excavation made for the manhole shall be cradled with concrete to the limits of the manhole excavation. When clay pipe is used, the cradle shall extend to the first joint outside the manhole. The cradle shall be terminated at the clay pipe joint in a manner which will maintain the flexibility of the joint. Cost of cradle within manhole excavation or to clay pipe joints adjacent to manhole shall be included in the unit price bid for the manhole.
- Manhole cover castings and manhole frame castings shall conform to the requirements as indicated in the standard specifications and as shown in the standard detail drawings.
- The crowns of inflowing pipes shall never be set lower than the crown of the outflowing pipe.
- Standard shallow manholes type "A" and "B" shall be paid for at the unit price bid per each; for the type and diameter indicated. Standard special shallow manholes type "A" and "B" shall be paid for at the unit price bid per each for the type indicated. All standard shallow manhole diameters will be 4' unless indicated otherwise.
- All brick used in manhole construction shall meet Grade SW of ASTM C652 or C62-87.

CITY OF WICHITA, KANSAS
STANDARD SHALLOW MANHOLES
TYPE "A" AND TYPE "B"

PROJECT NUMBER
468 76 245 82264 000 000 001

SHEET / OF
9 / 10

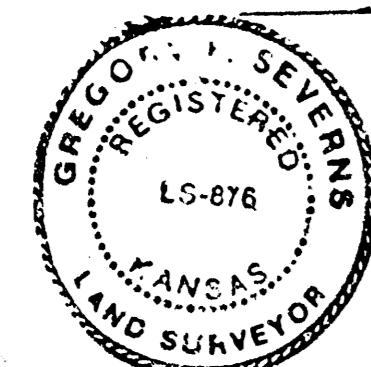
BAUGHMAN COMPANY P. A.
ENGINEERING & SURVEYING
316/262-7271 • 315 ELLIS • WICHITA, KANSAS 67211

DETAIL S-HL-WH-DWG

State of Kansas) We, Baughman Company, P.A., Surveyors in
Sedgwick County) aforesaid county and state do hereby certify that we have surveyed
and plotted "BREEZY POINTE 2ND ADDITION", Wichita, Sedgwick County,
Kansas and that the accompanying plat is a true and correct exhibit
of the property surveyed, described as follows: That part of the
SE 1/4 of Sec. 24, Twp 27-S, R-2-W of the 6th P.M., Sedgwick
County, Kansas, described as commencing at the S.E. Corner thereof,
thence N00°00'12"W, along the east line of said SE 1/4, 1538.13 feet
for a place of beginning; thence S89°59'48"W, 449.65 feet;
thence S00°00'12"E, 279.23 feet; thence S89°59'48"W, 505.54 feet;
thence N38°34'29"W, 205.40 feet; thence N00°00'12"W, 100 feet;
thence S89°59'48"W, 130 feet; thence N00°00'12"W, 12.60 feet;
thence S89°59'48"W, 965.55 feet; thence S14°01'32"W, 41.95 feet;
thence S16°29'35"E, 66.52 feet; thence N00°15'14"W, along the west
line of said SE 1/4, 1160.07 feet to the N.W. Corner of said SE 1/4;
thence N89°06'41"E, along the north line of said SE 1/4, 2582.15 feet
to the N.E. Corner of said SE 1/4; thence S00°00'12"E, along the
east line of said SE 1/4, 1083.16 feet to the place of beginning.
Existing public easements and dedications being vacated by
virtue of K.S.A. 12-512(b).

Baughman Company, P.A.

Date 11-2-92



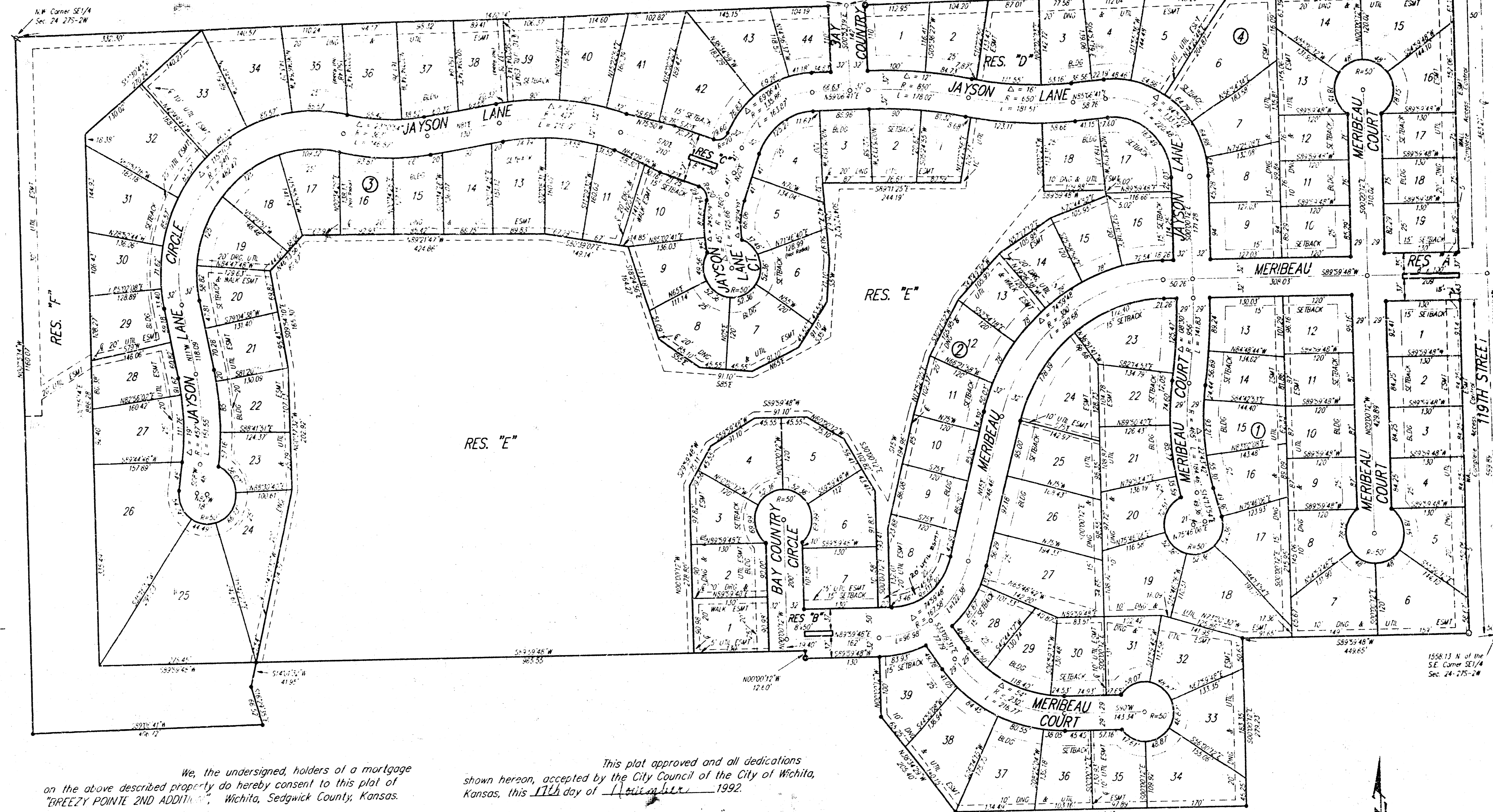
Gregory F. Severns
Surveyor

Know all men by these presents that we, the undersigned, have caused the land described in the surveyors certificate to be platted into Lots, Blocks, Streets and Reserves: to be known as "BREEZY POINTE 2ND ADDITION", Wichita, Sedgwick County, Kansas. Reserves "A", "B", and "C" are hereby reserved for entry monuments, landscaping and for street and utility purposes. Reserves "D", "E", and "F" are hereby reserved for floodway, lakes, drainage purposes, landscaping and pedestrian improvements. Reserves "A", "B", "C", "D", "E" and "F" shall be owned and maintained by the homeowners association for the addition. The floodway easements are hereby reserved for floodway purposes and shall be the responsibility of the homeowners association until such time as the appropriate governing body elects to assume the responsibility for maintenance and improvements of the drainage. No buildings shall be constructed on or within said floodway; nor shall any fill, change of grade, creation of channel or other work be carried on without the permission of said appropriate governing body. With such permission of said appropriate governing body, additional improvements and/or activities may be permitted within said floodway. The utility easements are hereby granted for the construction and maintenance of all public utilities. The drainage easements are hereby granted for drainage purposes and for the construction and maintenance of all public utilities. The wall easement is hereby granted for construction and maintenance of the private wall, utilities may cross the wall easement. The walk easements are hereby granted for pedestrian access. The streets are hereby dedicated to and for the use of the public. All abutters rights of access to or from 119th Street over and across the east line of Lots 1, 2, 3, 4, 5, and 6; Blk. 1, and the east line of Lots 15, 16, 17, 18, and 19; Blk. 4, are hereby granted to the City of Wichita, Kansas. The Minimum Building Pad Elevations for the lowest opening to the structures are as shown on the accompanying plat.

Jay W. Russell
Last Creek Estates Inc.
President

State of Kansas) The foregoing instrument acknowledged before me, this 11th day of November 1992, by Jay W. Russell and Pamela E. Russell, husband and wife.
My App't. Exp. 2-3-95
Mildred E. Franz
Notary Public

State of Kansas) The foregoing instrument acknowledged before me, this 11th day of November 1992, by Jay W. Russell, President of Last Creek Estates Inc., on behalf of that corporation.
My App't. Exp. 2-3-95
Mildred E. Franz
Notary Public



We, the undersigned, holders of a mortgage on the above described property do hereby consent to this plat of "BREEZY POINTE 2ND ADDITION", Wichita, Sedgwick County, Kansas.
1st. National Bank in Wichita
Roger G. Eastwood Vice-President
Roger G. Eastwood

State of Kansas) The foregoing instrument acknowledged before me, this 5th day of November 1992, by Roger G. Eastwood, Vice-President of 1st National Bank in Wichita, on behalf of the corporation.
My App't. Exp. 11-14-95
Joleen Barnhart
Notary Public

This plat of "BREEZY POINTE 2ND ADDITION", Wichita, Sedgwick County, Kansas has been submitted to and approved by the Wichita-Sedgwick County Metropolitan Area Planning Commission.
Dated this 4th day of February 1993.
Wichita-Sedgwick County Metropolitan Area Planning Commission

Chairman
Christopher J. Goebel
Secretary
Marvin S. Krout

This plat approved and all dedications shown hereon, accepted by the City Council of the City of Wichita, Kansas, this 11th day of November 1992.



Mayor
Frank Ojile
Deputy City Clerk
Pat Burnett

Entered on transfer record this 5th day of February 1993.

Susan F. Crankett-Spoon
County Clerk

State of Kansas) This is to certify that this plat has been filed for record in the office of the Register of Deeds, this 23rd day of FEBRUARY 1993, at 9:30 o'clock A.M. and is duly recorded.

Register of Deeds
Pat Kettler
Deputy
Ed Reso

MINIMUM BUILDING PAD ELEVATIONS FOR LOWEST OPENING OF STRUCTURE

Lot & Block	City Datum	Secretary M.S.L.
1, 2, 3, 4 - Blk 2	137.6	1325
5, 6, 7, 8, 9, 10, 11, 12, 13, 14, 15, 16, 17, 18, 19, 20, 21, 22, 23, 24, 25, 26, 27, 28 - Blk 3	138.6	1336
29, 30, 31 - Blk 3	138.6	1336
32 - Blk 3	138.6	1337
33, 34, 35, 36, 37, 38, 39, 40 - Blk 3	140.6	1358
5, 6, 7, 8, 9, 10, 11, 12, 13, 14, 15, 16, 17, 18 - Blk 2	143.6	1331
1, 2, 3, 4, 5, 6, 7 - Blk 2	146.6	1334

Scale 1" = 100'
• = Spot 3/4" Baughman Survey meter
⊙ = Found 3/4" iron
⊙ = Found 3/4" REC. capped iron
⊙ = Found 1" iron
BENCH MARK
City Blk 40 E. and 46 S of
Centerline intersection at Central
Avenue and 119th Street West
Elev. = 144.33 MSL Datum
Elev. = 156.93 City Datum

Note:
No building permits are to be issued for any lots within "BREEZY POINTE 2ND ADDITION", unless the lowest floor can be constructed at or above the B.M. unless the City of Wichita has received a letter of approval from the Federal Emergency Management Agency which will then allow buildings to be constructed at the lowest opening as specified above.

BREEZY POINTE 2ND ADDITION

WICHITA, SEDGWICK COUNTY, KANSAS.