

# SANITARY SEWER LAT. 29, MAIN 12, SOUTHWEST INTERCEPTOR

TO SERVE A PART OF  
SUNRIDGE 2ND ADDITION  
TO WICHITA, SEDGWICK COUNTY, KANSAS

CITY OF WICHITA, KANSAS  
M.E. LINDEBAK CITY ENGINEER

CITY PROJECT NO. 468-76-245-82154-000-000-001  
INDEX NO. 741165

July 1992

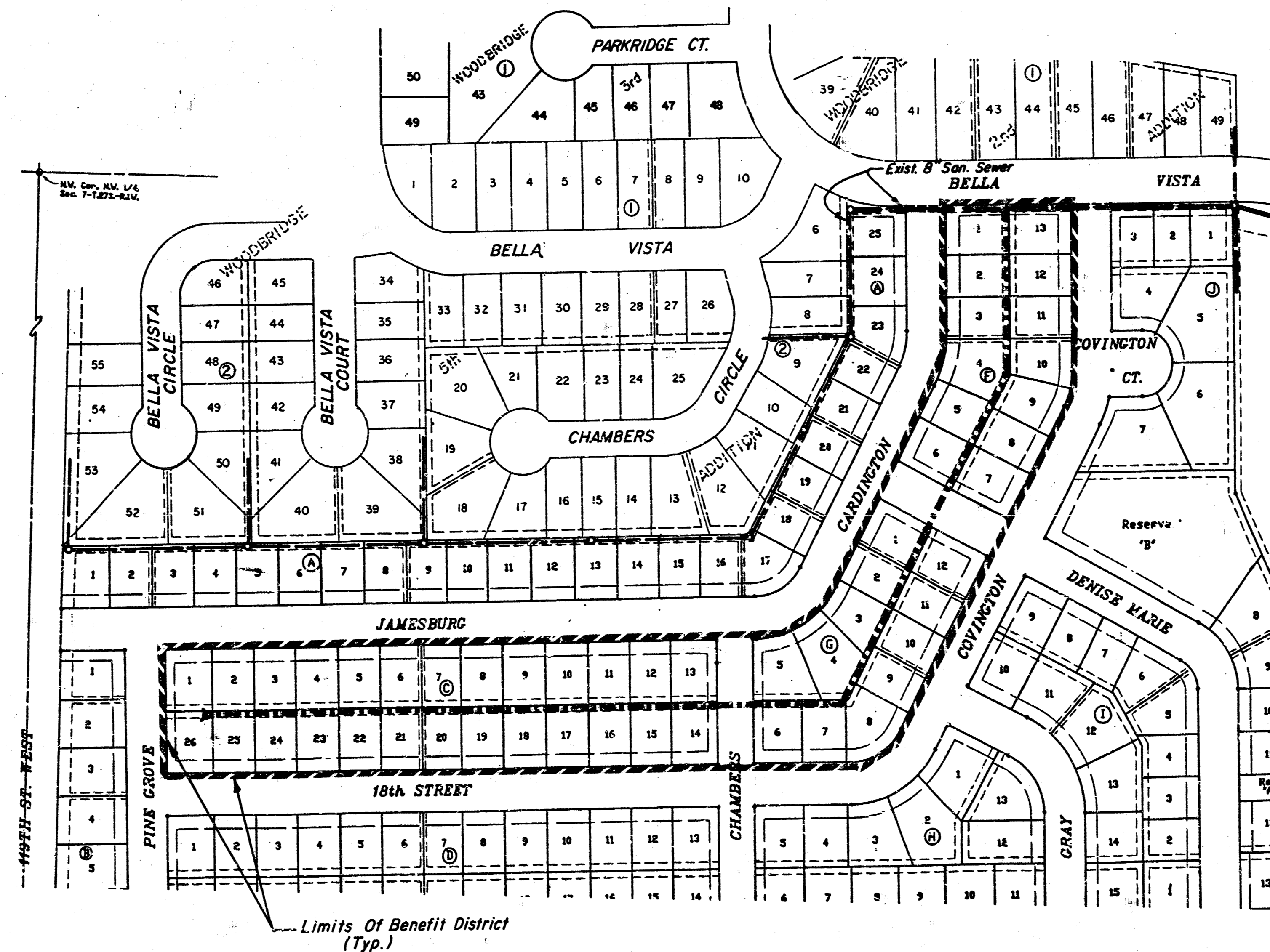
## NOTES

- CONTRACTOR WILL BE REQUIRED TO PROVIDE A MINIMUM ADVANCE NOTICE OF TWENTY-FOUR (24) HOURS TO UTILITY COMPANIES PRIOR TO STARTING ANY EXCAVATION AS FOLLOWS:  

KANSAS ONE-CALL	687-2470
-----------------	----------

THE CONTRACTOR MUST NOTIFY THE FOLLOWING IN CASE OF AN EMERGENCY:

CABLEVISION	262-4270 OR 263-2061
K.P. & L. GAS SERVICE COMPANY	263-7511
KANSAS GAS & ELECTRIC	263-1141
ARKLA GAS COMPANY	942-8350 OR 263-8161
SOUTHWESTERN BELL TELEPHONE COMPANY	1-571-2611
CITY OF WICHITA WATER DEPARTMENT	268-4908
CITY OF WICHITA SEWER MAINTENANCE	268-4071
- THE CONTRACTOR SHALL BE RESPONSIBLE FOR PRESERVING PROPERTY IRONS. THE CONTRACTOR WILL BE REQUIRED TO RE-ESTABLISH ANY PROPERTY IRONS WHICH ARE DAMAGED OR DESTROYED BY HIS CONSTRUCTION OPERATIONS. SUCH IRONS SHALL BE RE-ESTABLISHED BY A LICENSED LAND SURVEYOR IN ACCORDANCE WITH STATE LAWS.
- UNLESS OTHERWISE SPECIFIED ON THE PLANS, MANHOLES MAY BE TYPE "P", "C" OR "D" MANHOLES. MANHOLES SHALL BE CONSTRUCTED IN ACCORDANCE WITH THE STANDARD SPECIFICATIONS AND THE STANDARD DETAIL DRAWINGS.
- TRAFFIC WILL NOT BE AFFECTED IN THIS AREA OF CONSTRUCTION.
- CONTRACTOR SHALL PROVIDE POSITIVE DRAINAGE AWAY FROM ALL MANHOLE COVERS.
- CONTRACTOR SHALL GRADE THE SANITARY SEWER ALIGNMENT TO THE PROFILE AND ELEVATION SHOWN ON THE EASEMENT GRADING PLAN. ALL COSTS FOR GRADING SHALL BE PAID AS SANITARY EASEMENT GRADING.



## IMPROVEMENT DISTRICT DESCRIPTION

LOTS 1 THROUGH 26 INCLUSIVE, BLOCK "C"  
LOTS 1 THROUGH 12 INCLUSIVE, BLOCK "G"  
LOTS 1 THROUGH 13 INCLUSIVE, BLOCK "F"  
IN SUNRIDGE 2ND ADDITION

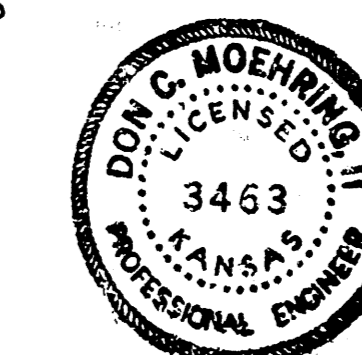
## INDEX

- Cover Sheet
- Plan & Profile - Line 1
- Easement Grading Plan / Plat
- Vertical Riser Details

## BENCHMARKS

- City Disc - 79' South and 46' East of NW Cor., NW 1/4, Sec. 7, T27S, R1W. Elev. = 172.08 City Datum
- "□" on top of curb, S. end return (SW Cor.) Parkridge and Parkridge Court, (NE Cor. Lot 48, Blk "1", Woodbridge 3rd Addition.) Elev. = 160.69 City Datum
- "□" on RCBC, N. end E. Wingwall, S. side Bella Vista. Elev. = 159.74 City Datum
- R.R. Spike in U.P., approx. 200' South of NW Prop. Cor. Sunridge 2nd Addition. Elev. = 167.02 City Datum

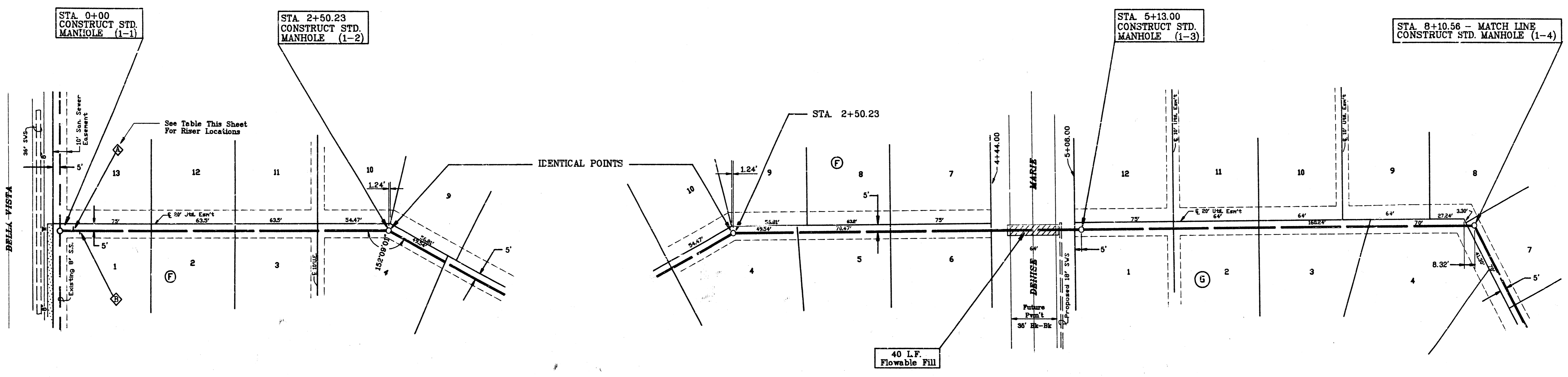
Booked 6-22-93  
As Per Plan  
SKB



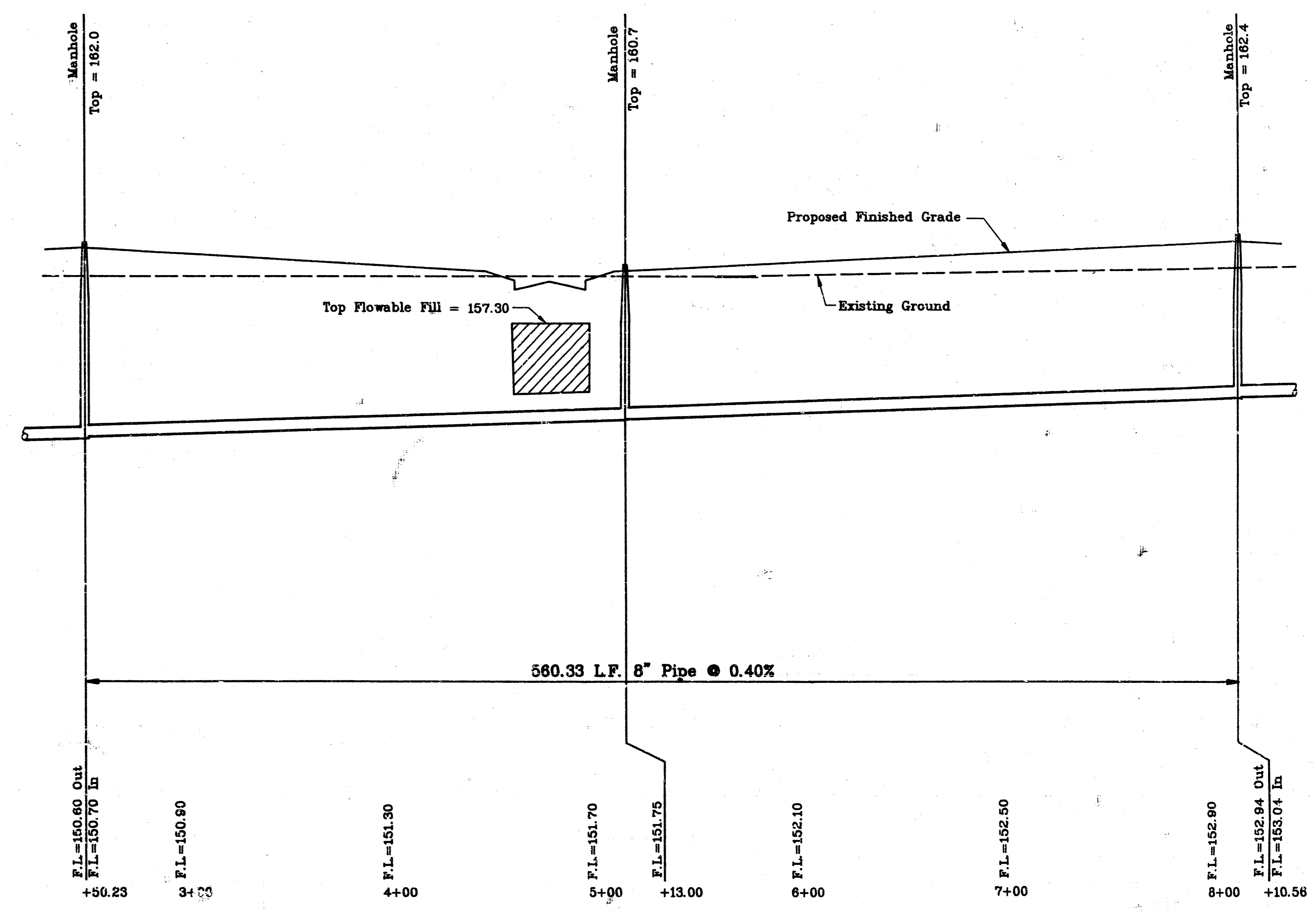
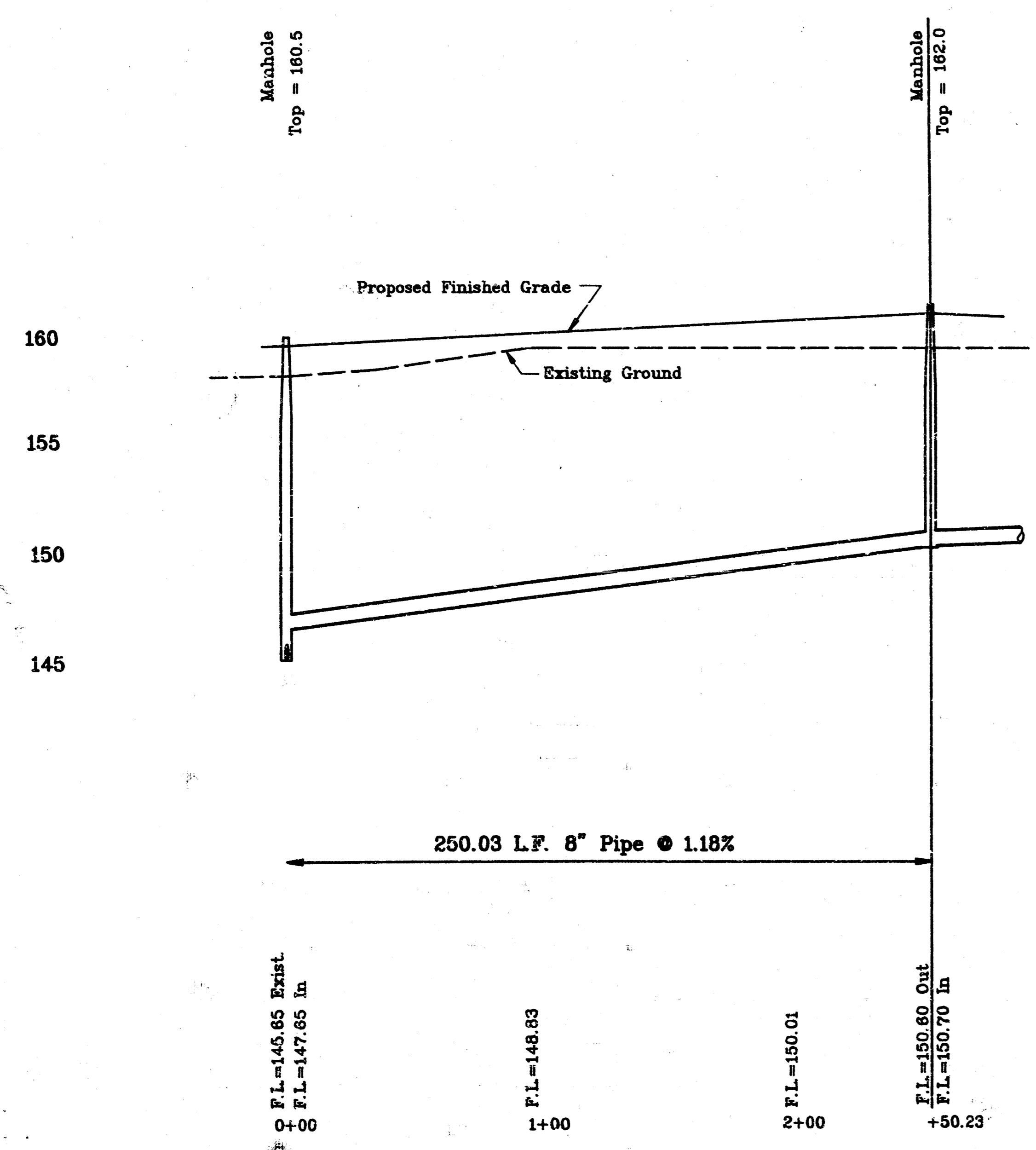
MOEHRING & ASSOCIATES  
CONSULTING ENGINEERS  
WICHITA

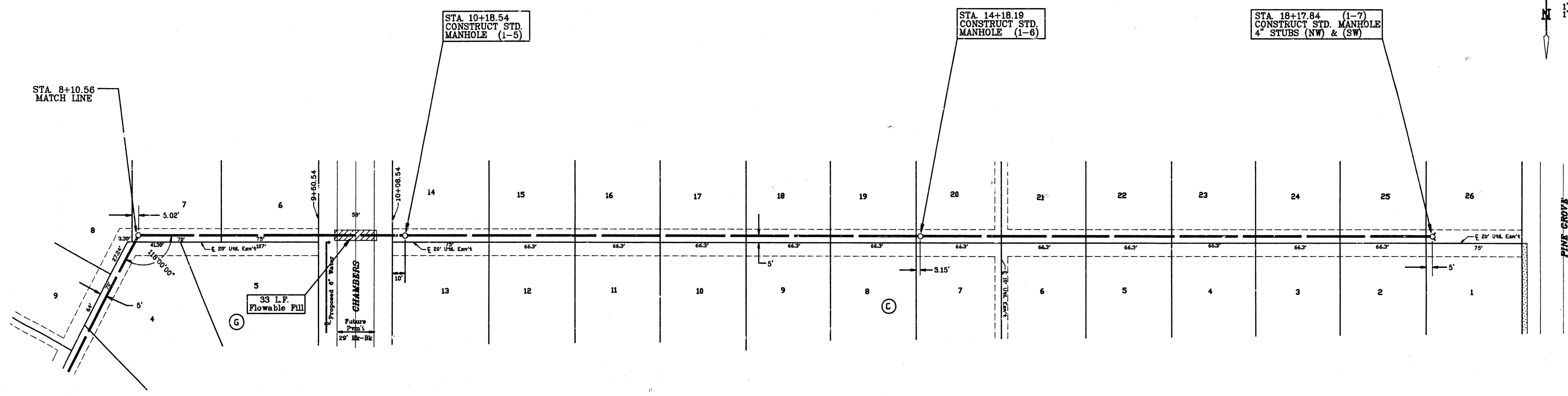
1" = 40' Horiz.  
1" = 5' Vert.

1" = 40' Horiz.  
1" = 5' Vert.

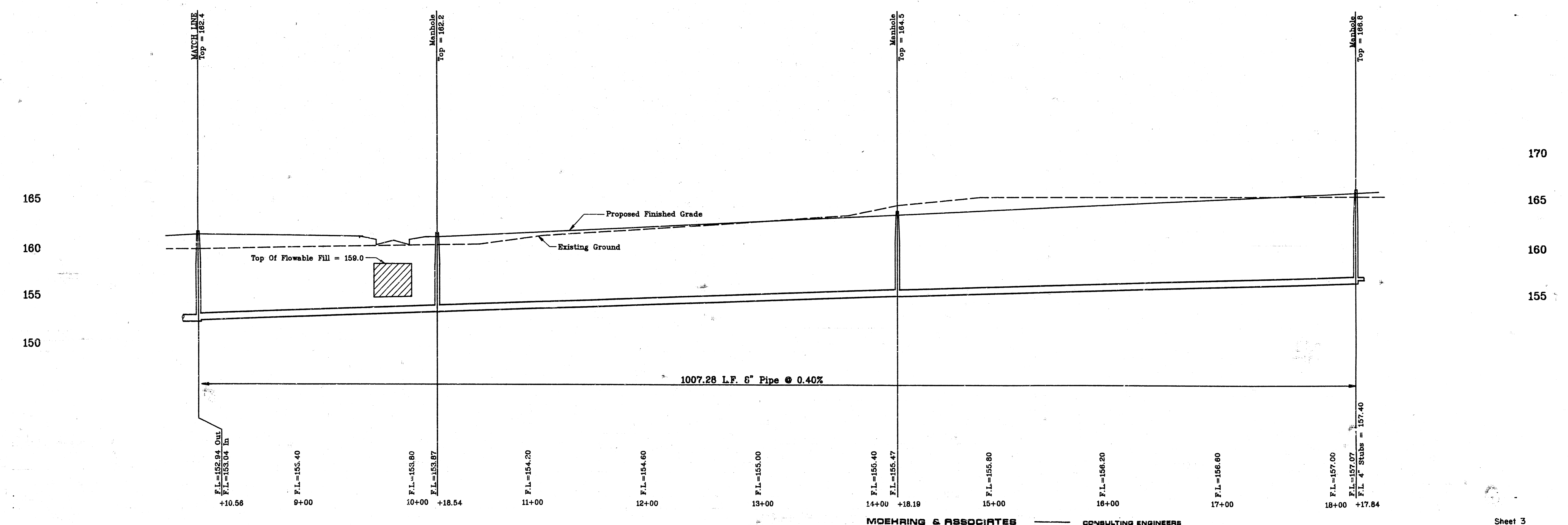


RISER LOCATION TABLE							
TEE SADDLE LOCATION						4" RISER PIPE	
NO.	LINE NO.	STATION	BLOCK NO.	LOT NO.	DIRECTION	FL 8" S.S. TOP RISER	
A	1	0 + 10	"F"	13	E	4.0'	147.77 151.77
B	1	0 + 15	"F"	1	W	4.0'	147.83 151.83



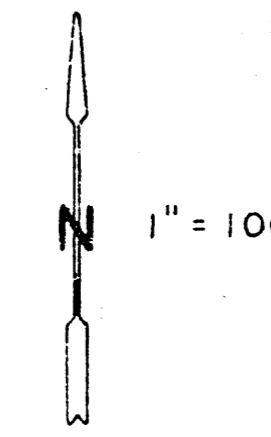


1" = 40' Horiz.  
1" = 5' Vert.

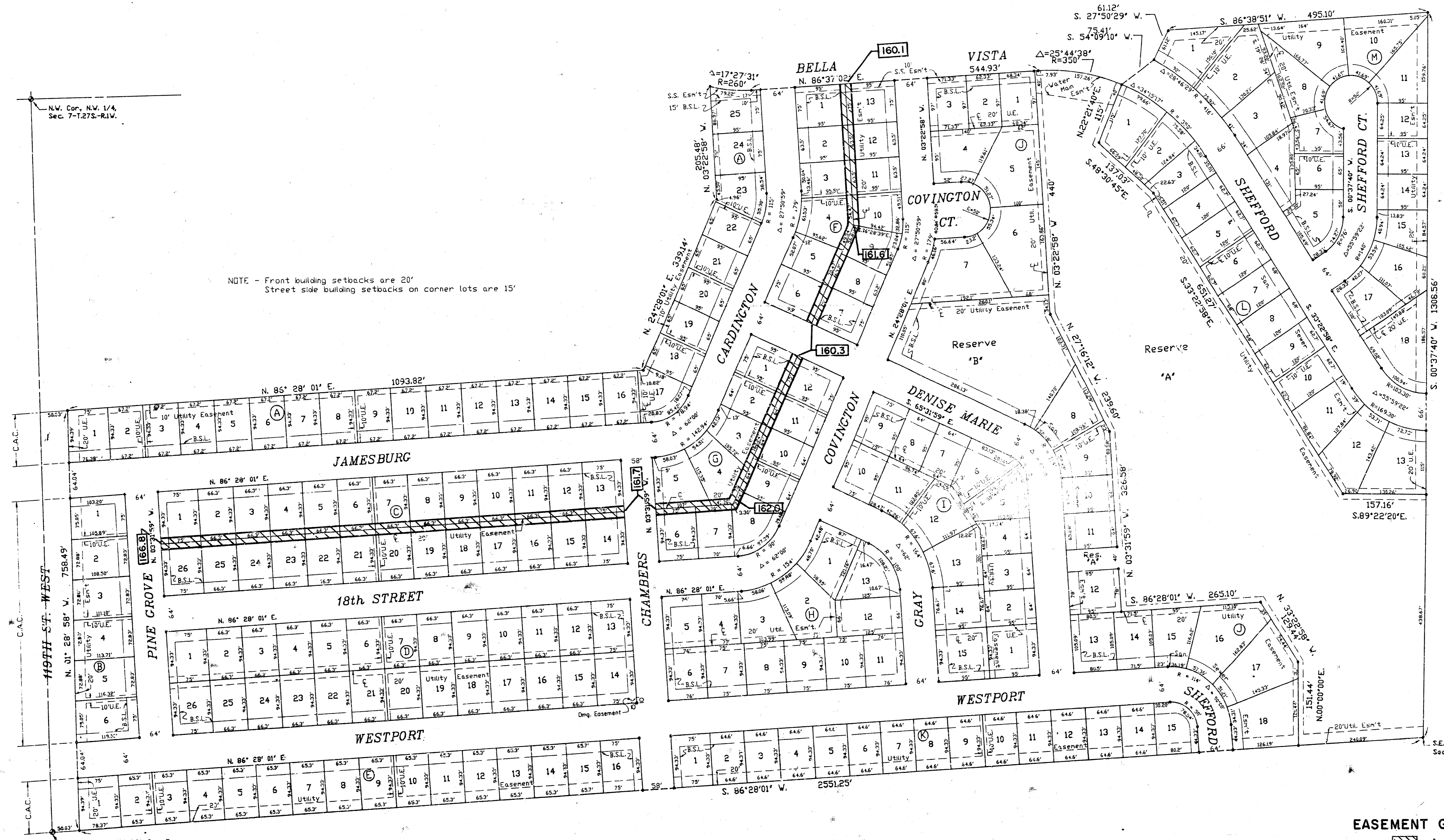


# SUNRIDGE 2ND ADDITION

## WICHITA, SEDGWICK COUNTY, KANSAS



**BENCHMARK**  
 City Disc - 79' S. and 46' E. of  
 the NW Cor. of the NW 1/4,  
 Sec. 7, T.27 S., R.1 W.  
 Elev. = 1359.48 M.S.L.  
 = 172.08 City Datum



NOTE - Front building setbacks are 20'  
 Street side building setbacks on corner lots are 15'

N.W. Cor., N.W. 1/4,  
 Sec. 7-T.27S.-R.1W.

49TH ST. WEST  
 N. 01° 28' 58" W. 758.849'  
 C.A.C.

S.W. Cor., N.W. 1/4, Sec. 7,  
 T.27S., R.1W., of the 6th P.M.

C.A.C. = Complete Access Control  
 B.S.L. = Building Setback Line

**EASEMENT GRADING PLAN / PLAT**  
 = Areas To Be Graded

# VERTICAL RISER DETAIL

ADOPTED AS STANDARD DESIGN  
BY

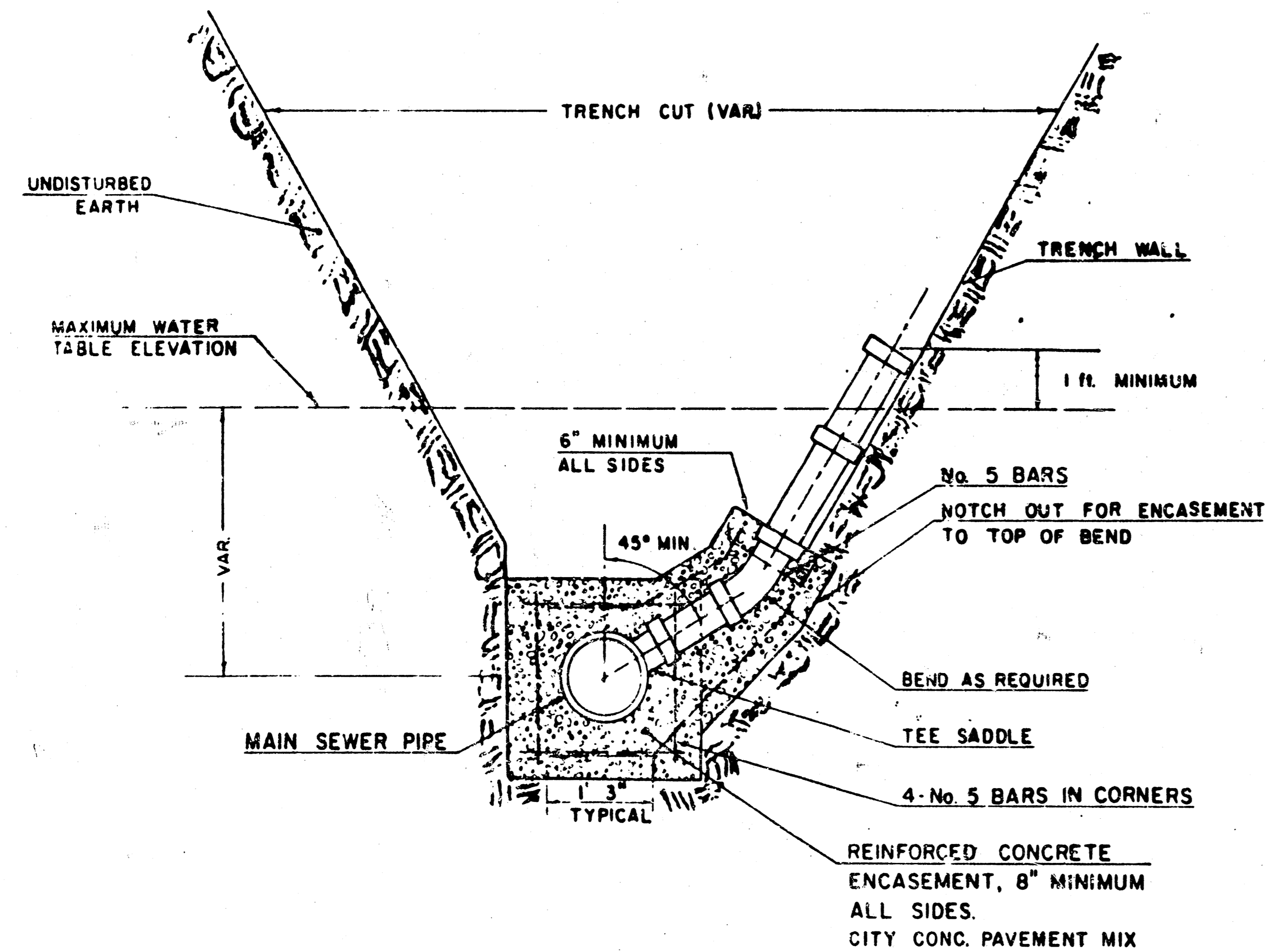
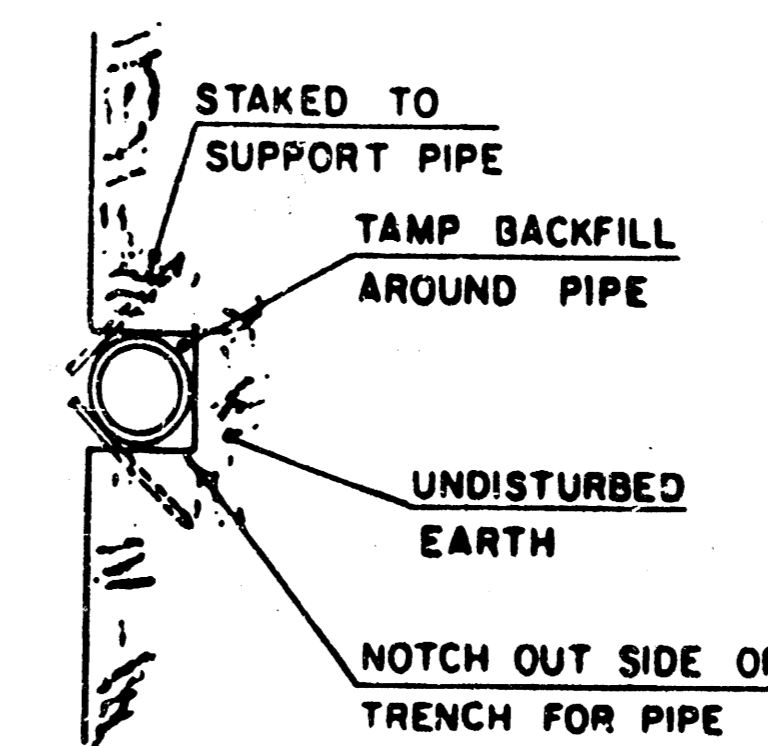
CITY OF WICHITA, KANSAS

**GENERAL NOTE**

RISERS SHALL BE INSTALLED TO SERVE ALL LOTS OR TRACTS WHEN THE MAIN SEWER LINE IS BELOW THE WATER TABLE. RISERS SHALL ALSO BE INSTALLED TO SERVE ALL LOTS AND TRACTS WHEN THE MAIN SEWER LINE DEPTH IS SUCH THAT WOULD MAKE THE BUILDING SEWER LINE CONNECTION DIFFICULT. INSTALLATION OF RISERS BECAUSE OF MAIN LINE SEWER DEPTH SHALL BE AS APPROVED BY THE ENGINEER. THE LOCATION OF RISERS TO SERVE DEVELOPED PROPERTY SHALL BE APPROVED BY THE PROPERTY OWNER. PIPE STUBS SHALL BE INSTALLED IN MANHOLES WHERE LOCATIONS OF MANHOLES WILL PROVIDE SATISFACTORY SERVICE CONNECTIONS AS DETERMINED BY THE FIELD ENGINEER. THE VERTICAL DISTANCE BETWEEN THE FLOW LINE OF THE MANHOLE PIPE STUB AND THE FLOW LINE OF THE MAIN SEWER LINE SHALL NOT EXCEED 4 FT. MANHOLE PIPE STUBS SHALL NOT BE SET BELOW AN ELEVATION WHICH WILL PERMIT THE TOP OF THE INSIDE OF THE STUB TO MATCH THE TOP OF THE INSIDE OF THE MAIN SEWER PIPE. PIPE STUBS AND RISERS INSTALLED TO SERVE COMMERCIAL OR INDUSTRIAL PROPERTY SHALL BE 6 INCH. PIPE STUBS AND RISERS INSTALLED TO SERVE RESIDENTIAL PROPERTY MAY BE EITHER 6 INCH OR 4 INCH DEPENDING UPON THE AVAILABLE GRADE AND THE SIZE OF THE LOT AS DETERMINED BY THE FIELD ENGINEER. ENCASEMENT OF VITRIFIED CLAY MAIN SEWER PIPE SHALL EXTEND TO THE FIRST JOINT IN THE MAIN SEWER CLAY PIPE ON EACH SIDE OF THE RISER INSTALLATION. ENCASEMENT OF A.B.S. COMPOSITE OR P.V.C. MAIN SEWER PIPE SHALL EXTEND A MINIMUM OF 3 FT. ON BOTH SIDES OF THE CENTERLINE OF THE RISER. FOUR INCH AND SIX INCH RISER PIPE SHALL BE ENCASED WITH CONCRETE TO THE TOP OF THE BEND AS INDICATED IN THE DRAWINGS. FOUR INCH AND SIX INCH CLAY PIPE USED FOR RISERS SHALL BE EXTRA STRENGTH PIPE CONFORMING TO THE REQUIREMENTS OF THE LATEST REVISION OF A.S.T.M. DESIGNATION C700 WITH COMPRESSION JOINTS AS SPECIFIED FOR CLAY PIPE IN THE STANDARD SPECIFICATIONS. FOUR INCH AND SIX INCH A.B.S. OR P.V.C. PIPE SHALL BE PIPE APPROVED FOR USE IN THE CITY BY THE CHIEF PLUMBING AND MECHANICAL INSPECTOR FOR THE CENTRAL INSPECTION DIVISION OF THE DEPARTMENT OF HOUSING AND ECONOMIC DEVELOPMENT. LOCATIONS OF THE ENDS OF THE RISERS SHALL BE MARKED BY FASTENING GREEN COLORED PLASTIC TAPE TO THE END OF THE RISER WHICH SHALL BE EXTENDED TO THE GROUND SURFACE AS THE EXCAVATION IS BACKFILLED SUCH THAT THE COLORED TAPE WILL BE VISIBLE WHEN THE PROJECT IS COMPLETED. SUCH GREEN PLASTIC TAPE SHALL BE A MIL POLYETHYLENE FILM WITH A MINIMUM WIDTH OF 3" SPECIALLY MANUFACTURED FOR THE PURPOSE OF IDENTIFICATION OF UNDERGROUND SEWERS. THE ENDS OF THE RISER PIPE AND MANHOLE STUBS SHALL BE CAPPED OR PLUGGED USING FITTINGS FURNISHED BY THE MANUFACTURER OF THE PIPE. CONTRACTOR'S METHODS FOR SUPPORTING AND BACKFILLING RISER PIPE SHALL BE APPROVED BY THE ENGINEER.

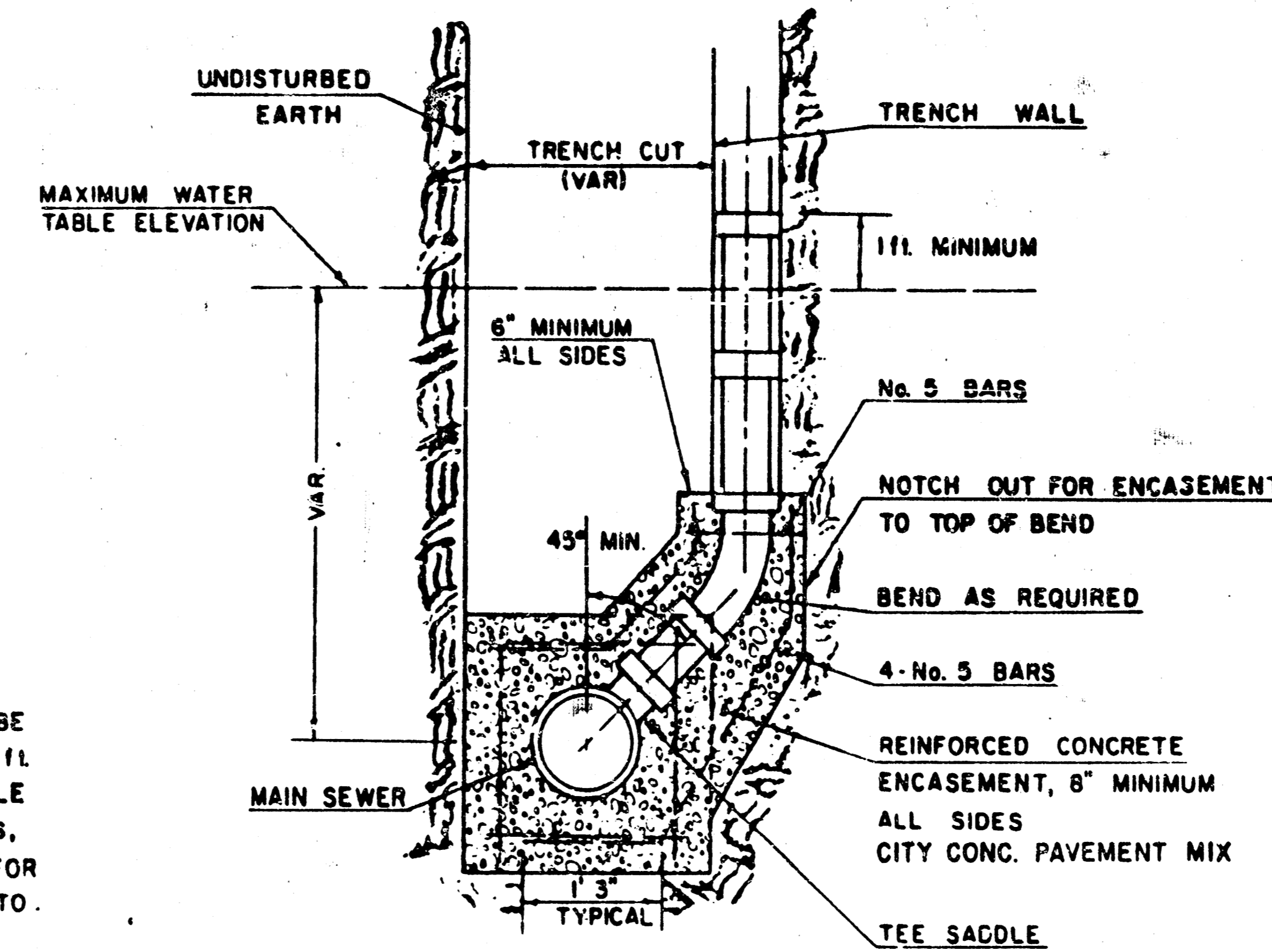
FURNISHING AND INSTALLING RISERS SHALL BE PAID FOR AT THE UNIT PRICES BID FOR 4" PIPE, 6" PIPE AND REINFORCED CONCRETE ENCASEMENT FOR THE VARIOUS MAIN SEWER PIPE SIZES INDICATED. WHICH PRICE SHALL INCLUDE ALL COSTS FOR COMPLETION OF THIS ITEM INCLUDING SADDLES, BENDS, CONCRETE, REINFORCING STEEL, CAPS OR PLUGS, AND ALL OTHER NECESSARY MATERIALS OR WORK. CONCRETE ENCASEMENT OF THE RISER PIPE TO THE TOP OF THE BEND AS SHOWN BY THE DRAWINGS WILL NOT BE PAID FOR DIRECTLY AND THE COST FOR THIS WORK SHALL BE CONSIDERED AS SUBSIDIARY TO THE OTHER ITEMS OF WORK.

THE PROJECT INSPECTOR SHALL REPORT ON INSPECTOR CARDS THE LOCATION OF ALL RISERS CONSTRUCTED AS MEASURED FROM THE NEAREST MANHOLE, THE DIRECTION OF SERVICE, THE ELEVATION OF THE TOP OF THE RISER, AND THE PAY QUANTITIES INVOLVED. THE PROJECT INSPECTOR SHALL ALSO REPORT ON INSPECTOR CARDS THE LOCATION, DIRECTION OF SERVICE, AND SIZE OF ALL STUBS INSTALLED IN MANHOLES.



TYPICAL RISER FOR SLOPING-TRENCH WALLS

NOTE:  
TOP OF 4" OR 6" RISER PIPE TO BE EXTENDED TO AN ELEVATION OF 1 ft. MINIMUM ABOVE THE WATER TABLE ELEVATION, WHEN WATER EXISTS, OR TO AN ELEVATION SUITABLE FOR PROVIDING SERVICE TO THE LOT TO BE SERVED AND THEN PLUGGED.



TYPICAL RISER FOR VERTICAL TRENCH WALLS