

**SANITARY SEWER PLANS
LATERAL 6, MAIN 13, SW INTERCEPTOR**

PAWNEE MESA THIRD ADDITION

PROJECT NO. 468 - 82071

**CITY OF WICHITA, KANSAS
MICHAEL E. LINDEBAK, CITY ENGINEER**

JULY, 1990

INDEX NO. 740555

GENERAL NOTES

1. THE CONTRACTOR SHALL BE RESPONSIBLE FOR PRESERVING PROPERTY IRONS. THE CONTRACTOR SHALL BE REQUIRED TO RE-ESTABLISH ANY PROPERTY IRONS WHICH ARE DAMAGED OR DESTROYED BY HIS CONSTRUCTION OPERATIONS. SUCH IRONS SHALL BE RE-ESTABLISHED BY A LICENSED LAND SURVEYOR IN ACCORDANCE WITH STATE LAWS.
2. A PORTION OF EXCESS EXCAVATED MATERIAL SHALL BE MOUND AROUND MANHOLES WHICH EXCEED MORE THAN ONE (1) FOOT ABOVE THE EXISTING GROUND. SUCH MOUNDS SHALL BE CONSTRUCTED WITH A SIX (6) FOOT DIAMETER FLAT TOP WITH 4 TO 1 SIDE SLOPES DOWN TO THE ORIGINAL GROUND. THE ELEVATION OF THE FLAT TOP OF THE MOUND SHALL BE 0.4 FOOT BELOW THE TOP OF THE MANHOLE.
3. CONTRACTOR WILL BE REQUIRED TO PROVIDE A MINIMUM ADVANCE NOTICE OF TWENTY-FOUR (24) HOURS TO UTILITY COMPANIES PRIOR TO STARTING ANY EXCAVATION AS FOLLOWS:

KANSAS ONE-CALL 1-800-344-7233
or 687-2470 (LOCAL WICHITA)

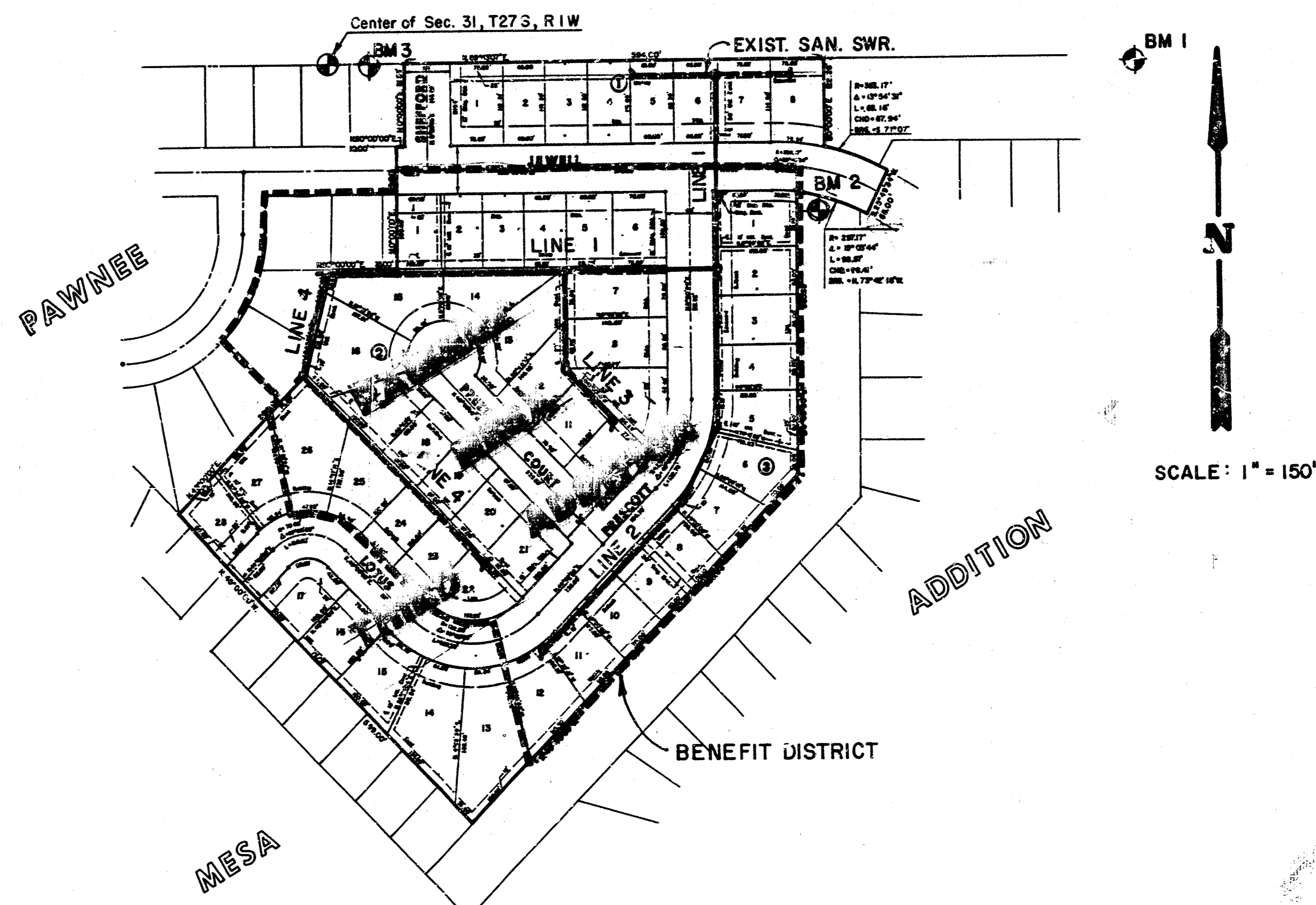
THE CONTRACTOR MUST NOTIFY THE FOLLOWING IN CASE OF EMERGENCY:

ARKLA GAS COMPANY 942-8350 or 263-8161
BELL TELEPHONE 1-316-571-2115
CABLEVISION 262-4270 or 263-2061
KPL GAS SERVICE COMPANY 263-7511
KANSAS GAS & ELECTRIC 264-1141
CITY OF WICHITA WATER DEPARTMENT 268-4908
CITY OF WICHITA SEWER MAINTENANCE 268-4071

4. EXISTING UTILITIES AND THEIR LOCATIONS, AS SHOWN ON THE PLANS, REPRESENT THE BEST INFORMATION OBTAINABLE FOR DESIGN. LOCATION INFORMATION HAS BEEN OBTAINED FROM THE VARIOUS UTILITY COMPANIES AND IS EITHER FROM COMPANY RECORD DRAWINGS OR COMPANY PROVIDED FIELD LOCATIONS. THE PLAN LOCATIONS SHOWN ARE NOT GUARANTEED. ADDITIONAL EXISTING UTILITIES MAY ALSO BE ENCOUNTERED.
5. ALL STUBS AND PLUGGED PIPES SHALL BE LOCATED WITH GREEN PLASTIC TAPE IN THE SAME MANNER AS RESERS.
6. RUBBLE FROM THE REMOVAL OF MISCELLANEOUS STRUCTURES AND EXCESS EXCAVATION WHICH IS TO BE WASTED SHALL BE DISPOSED OF ON SITES TO BE PROVIDED BY THE CONTRACTOR. THESE SITES SHALL BE APPROVED BY THE ENGINEER AS TO SUITABILITY, APPEARANCE AND SITE LOCATION. LOCATIONS THAT, IN THE OPINION OF THE ENGINEER, WILL LEAVE AN UNSIGHTLY APPEARANCE WILL NOT BE APPROVED.
7. PRIOR TO LAYING SEWER LINES USING EXISTING STUBS IN EXISTING MANHOLES, THE CONTRACTOR SHALL EXPOSE AND VERIFY THE ELEVATION, GRADE AND ALIGNMENT OF EXISTING STUBS AND NOTIFY THE ENGINEER OF ANY DEVIATION FROM THE PLAN. WHERE CONNECTING TO AN EXISTING MANHOLE THAT DOES NOT HAVE AN EXISTING STUB OR THE STUB IS UNUSABLE DUE TO ELEVATION GRADE OR ALIGNMENT, THE CONTRACTOR SHALL RESHAPE THE EXISTING MANHOLE INVERT TO PROVIDE SMOOTH FLOW. THE COST OF RESHAPING EXISTING MANHOLE INVERTS IS INCIDENTAL TO THE PROJECT.
8. TREES AND SHRUBS IN PUBLIC RIGHT-OF-WAY WHICH ARE IN DIRECT CONFLICT WITH PROPOSED NEW CONSTRUCTION SHALL BE REMOVED BY THE CONTRACTOR WITH THE ENGINEER'S APPROVAL. TREES AND SHRUBS WHICH ARE NOT IN DIRECT CONFLICT WITH PROPOSED NEW CONSTRUCTION SHALL BE SAVED AND PROTECTED FROM DAMAGE.
9. COST OF EXCAVATION, HAULING, AND DUMPING OF EXCESS EXCAVATION SHALL BE SUBSIDIARY TO THE PROJECT.
10. CONTRACTOR SHALL GRADE THE SANITARY SEWER ALIGNMENT TO THE PROFILE AND ELEVATION SHOWN ON THE EASEMENT GRADING PLAN. ALL COSTS FOR GRADING SHALL BE SUBSIDIARY TO THE PROJECT.

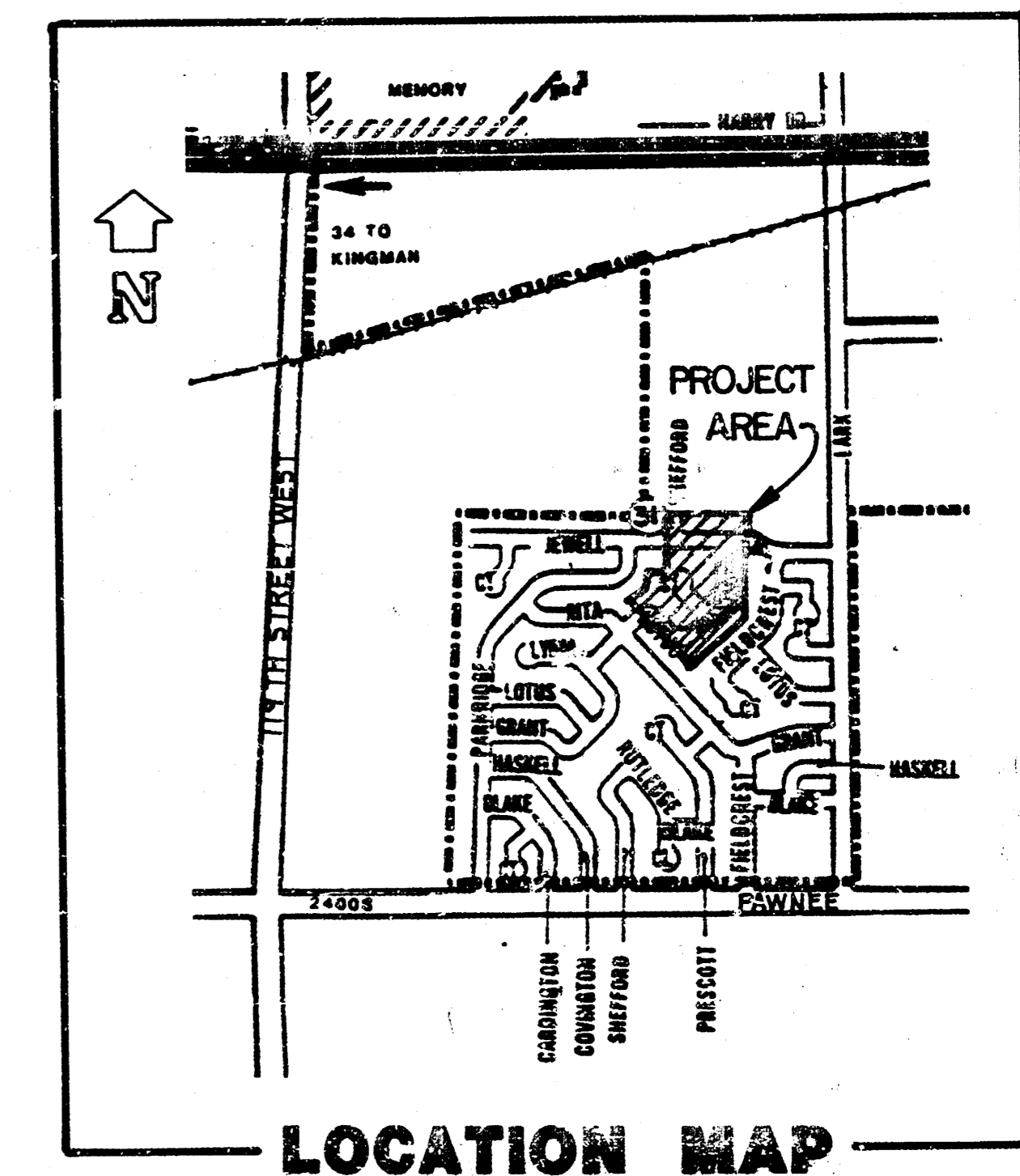
BENCH MARKS

1. City Disk in north end of West Headwall of RCB under Lark on south 1/2 E. Elevation = 139.25
2. " X " Cut on southwest corner of south Headwall of RCB under Jewell between Prescott & Fieldcrest Elevation = 140.29
3. Railroad spike in south face of 24" hedge 54° E of the center of Section 31 Elevation = 146.03

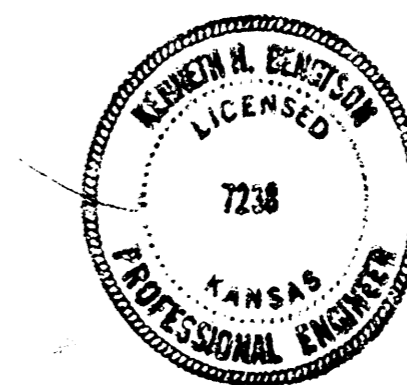


INDEX TO DRAWINGS

SHEET NO.	DESCRIPTIONS
1	Title Sheet
2	Plan/Profile - Line 1
3	Plan/Profile - Line 2 & 3
4	Plan/Profile - Line 4
5	Pawnee Mesa Third Addition Final Plat



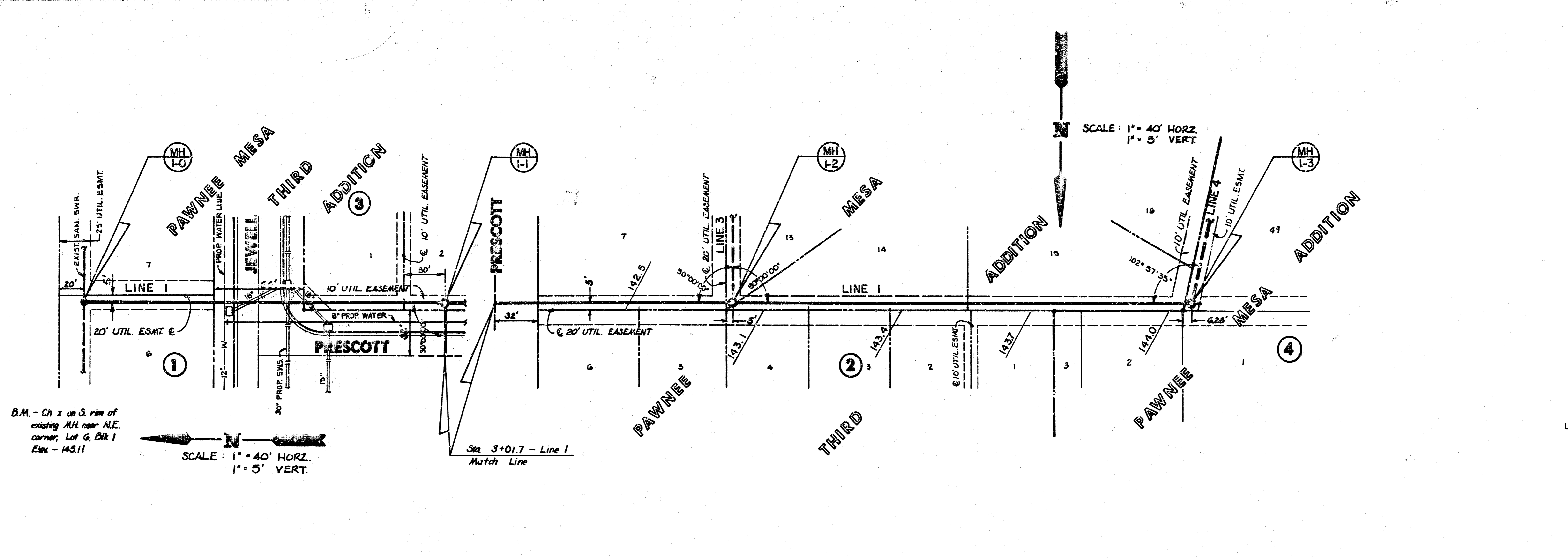
*Build per
PLAN
1-91- RPL*



MK EC	PAWNEE MESA THIRD AD.	Design: BFG
	SANITARY SEWER PLANS	Drawn by: DPR
		Checked by:
		Date: JULY 1990
		Job No.:
MID-KANSAS ENGINEERING CONSULTANTS PA 3500 NORTH ROCK ROAD BUILDING #800 WICHITA, KANSAS 67226		Sheet: 1 of 5

FILMED FROM THE BEST AVAILABLE COPY

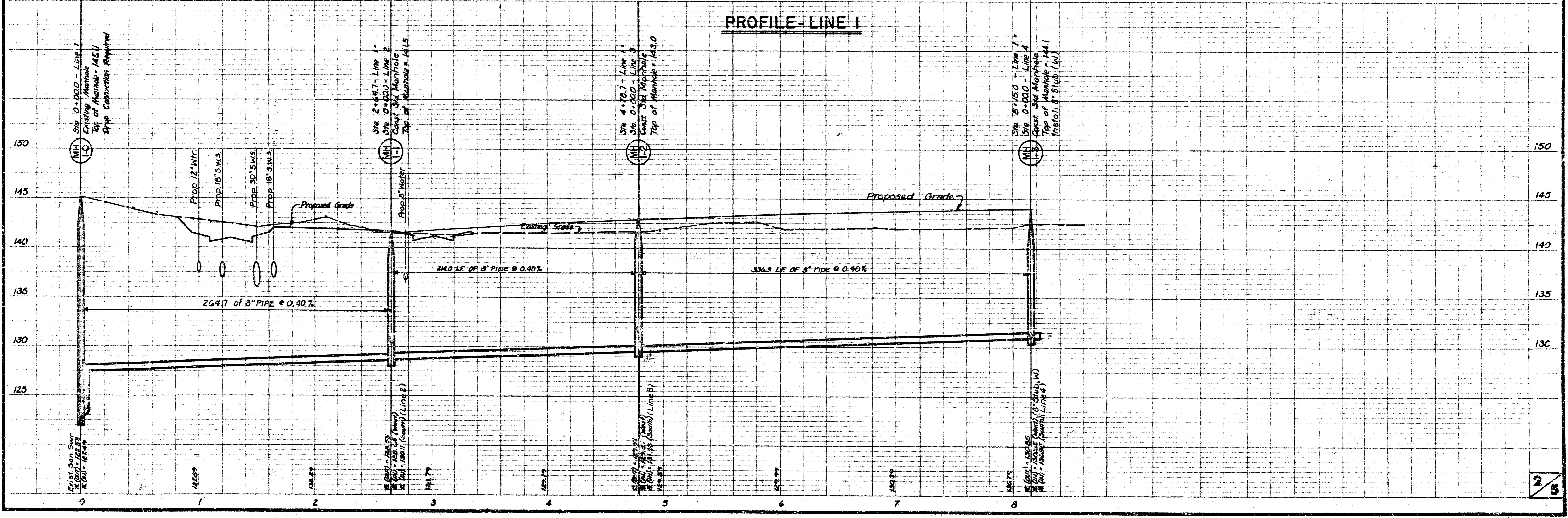
PAWNEE MESA THIRD ADDITION
 LAT. 6, MAIN 13, S.W. INTERCEPTOR
 PROJ. NO. 468-82071



B.M. - Ch x on S. rim of existing M.H. near N.E. corner, Lot 6, Blk 1 Elev - 143.11
 SCALE: 1" = 40' HORIZ.
 1" = 5' VERT.

PLAN - LINE 1

LINE NO.	STATION	FLOWLINE	TOP OF RISER	LOT	BLOCK
1	2+25	M	128.39	132.5	1 3
1	3+45	M	128.97	132.0	6 2
1	3+80	S	129.11	132.0	7 2
1	4+15	M	129.25	132.5	5 2
1	5+20	S	129.51	133.5	14 2
1	5+45	M	129.78	133.5	3 2
1	6+05	M	130.02	133.5	2 7
1	6+60	S	130.24	133.5	15 2
1	6+65	M	130.26	133.5	1 2
1	7+46	M	130.58	134.0	2 4

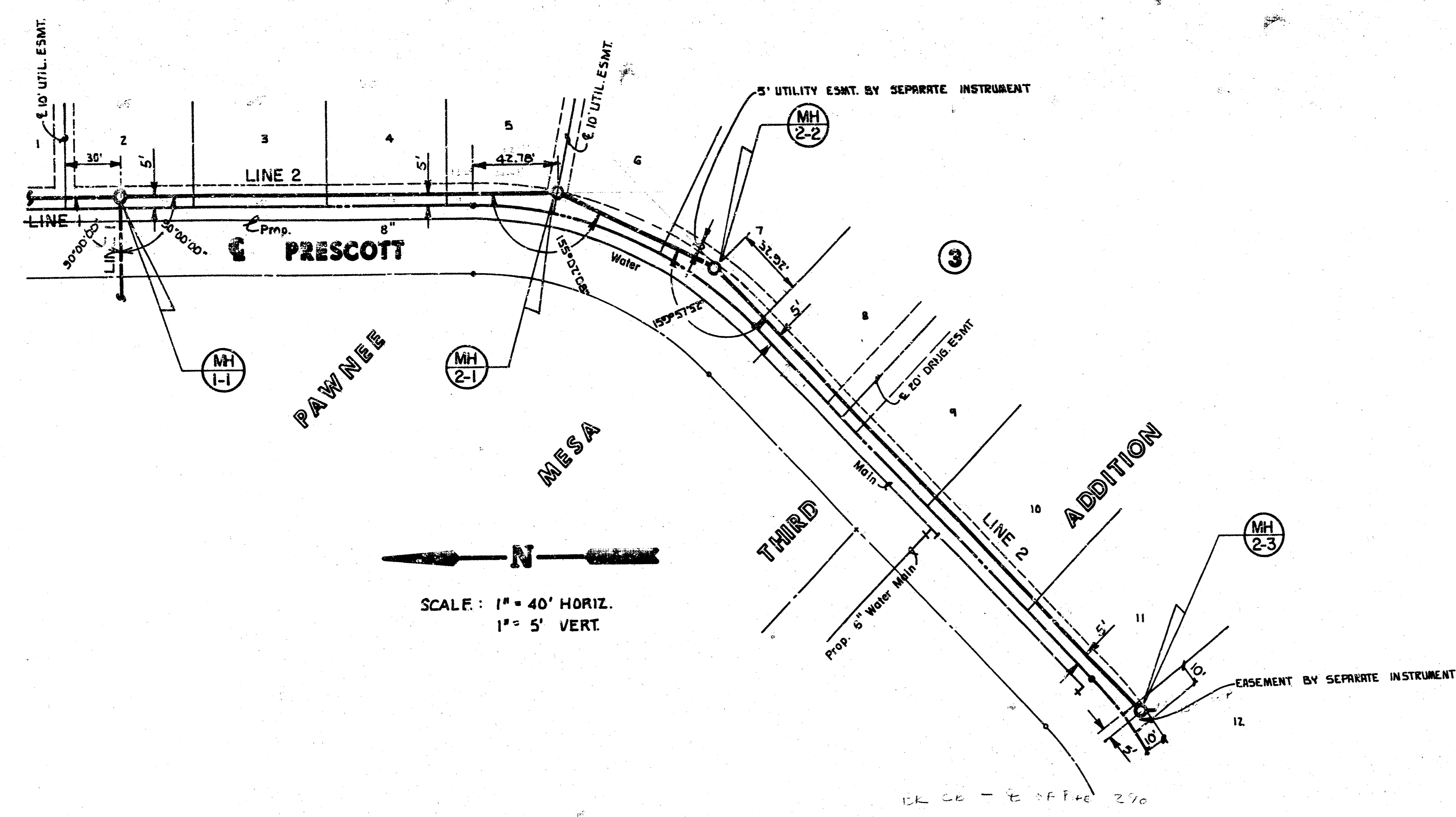


PROFILE - LINE 1

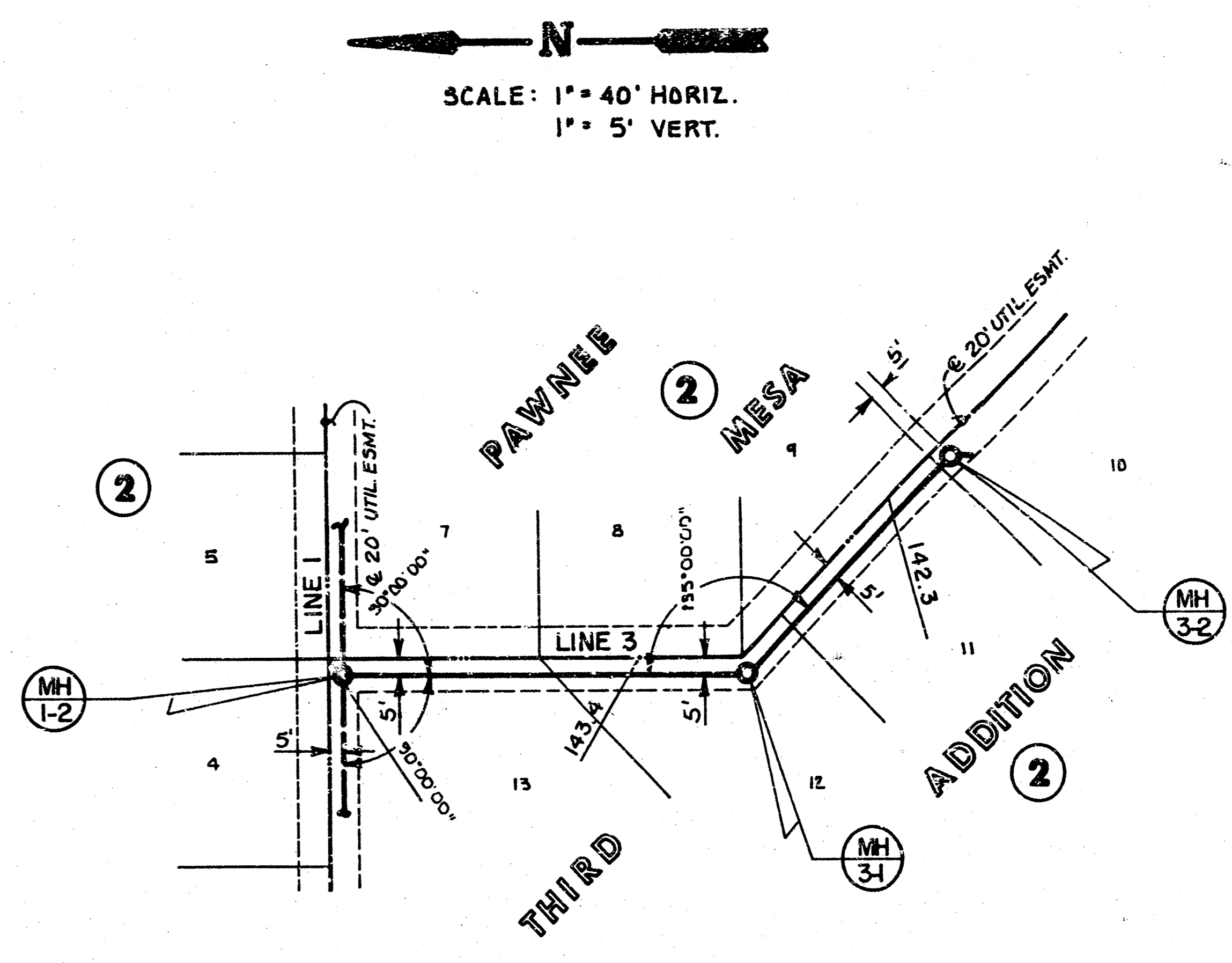
25

FILMED FROM THE BEST AVAILABLE COPY

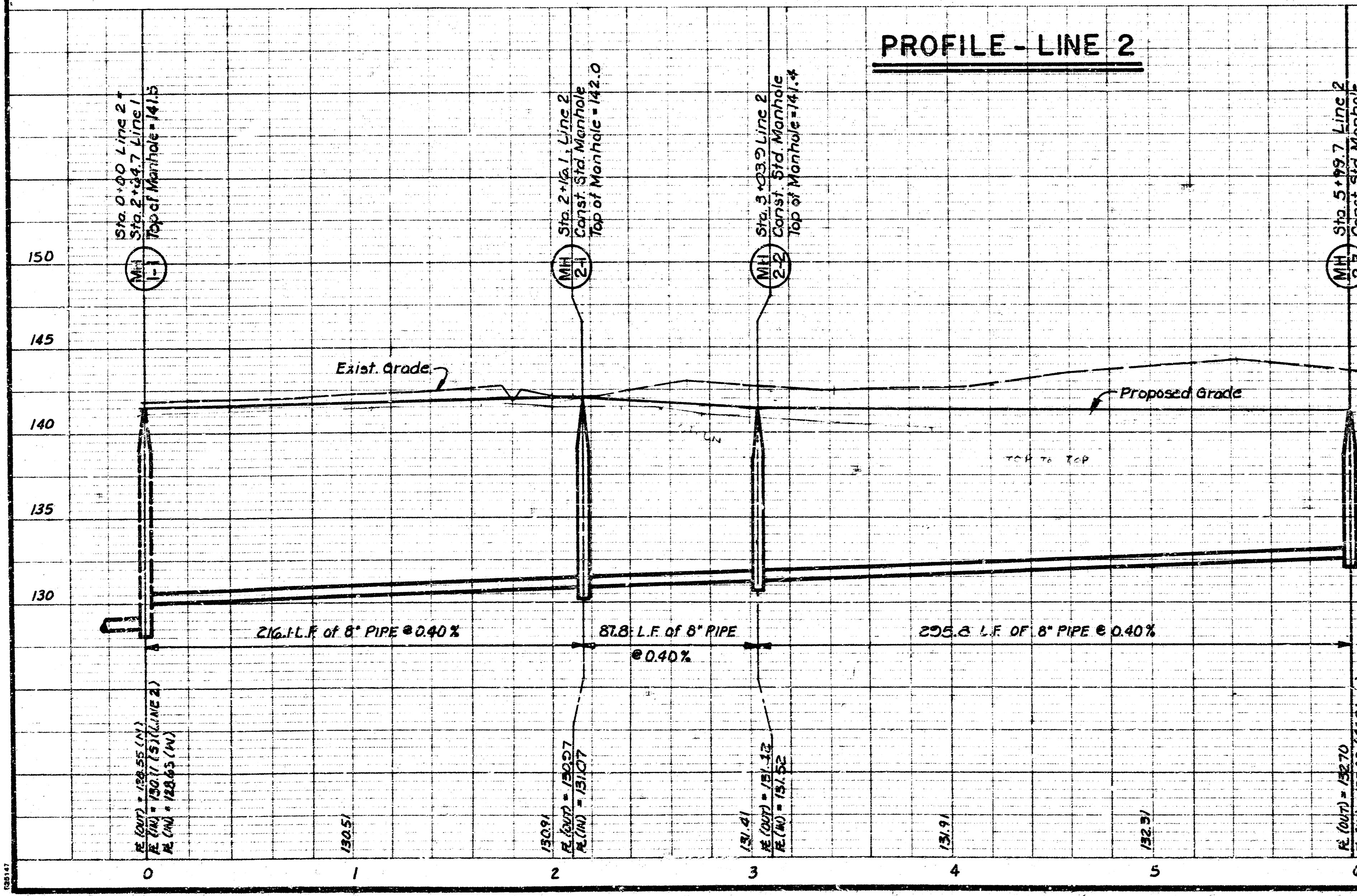
PAWNEE MESA THIRD ADDITION
 LAT. 6, MAIN 13, S.W. INTERCEPTOR
 PROJ. NO. 468-82071



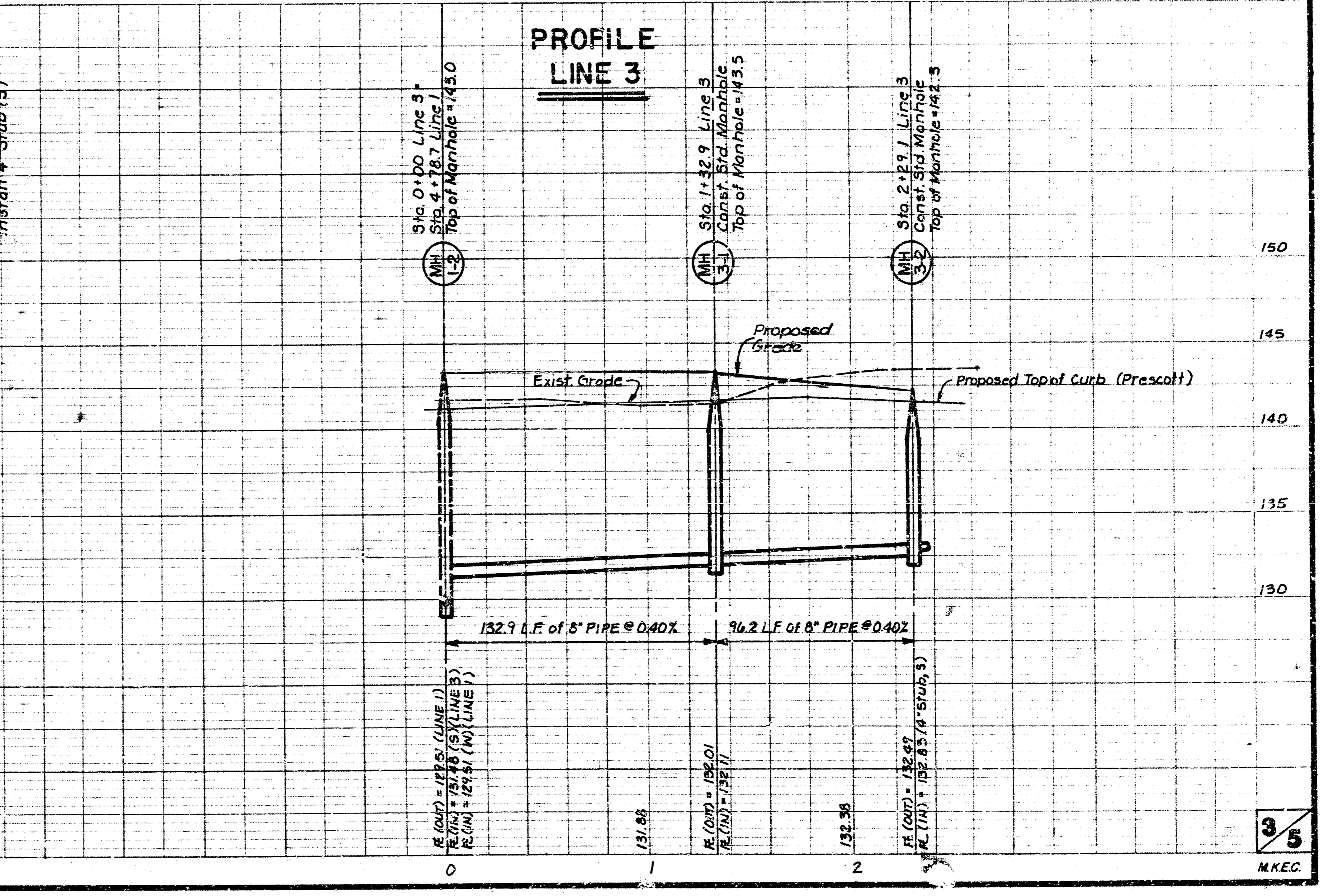
PLAN - LINE 2



PLAN - LINE 3

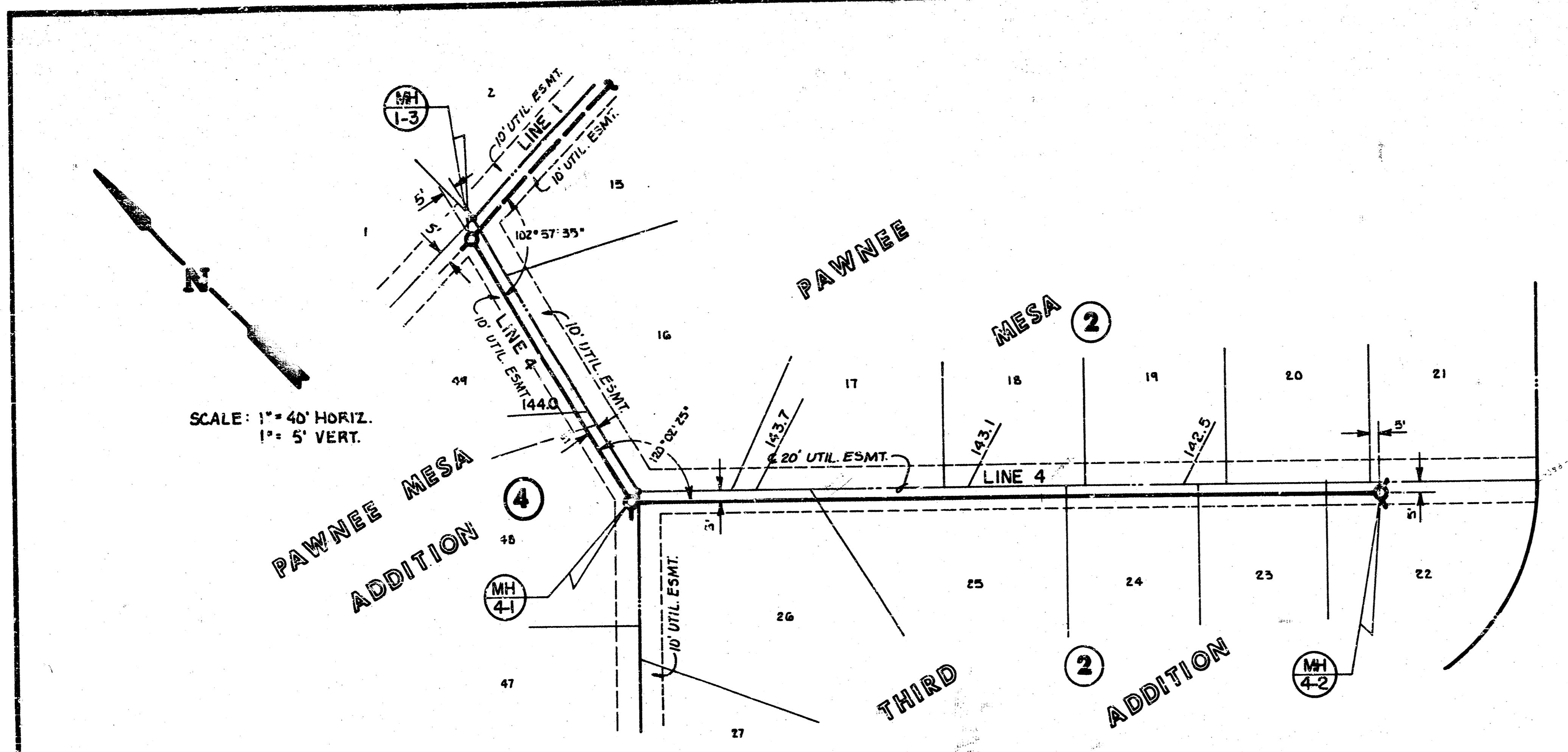


PROFILE - LINE 2



PROFILE LINE 3

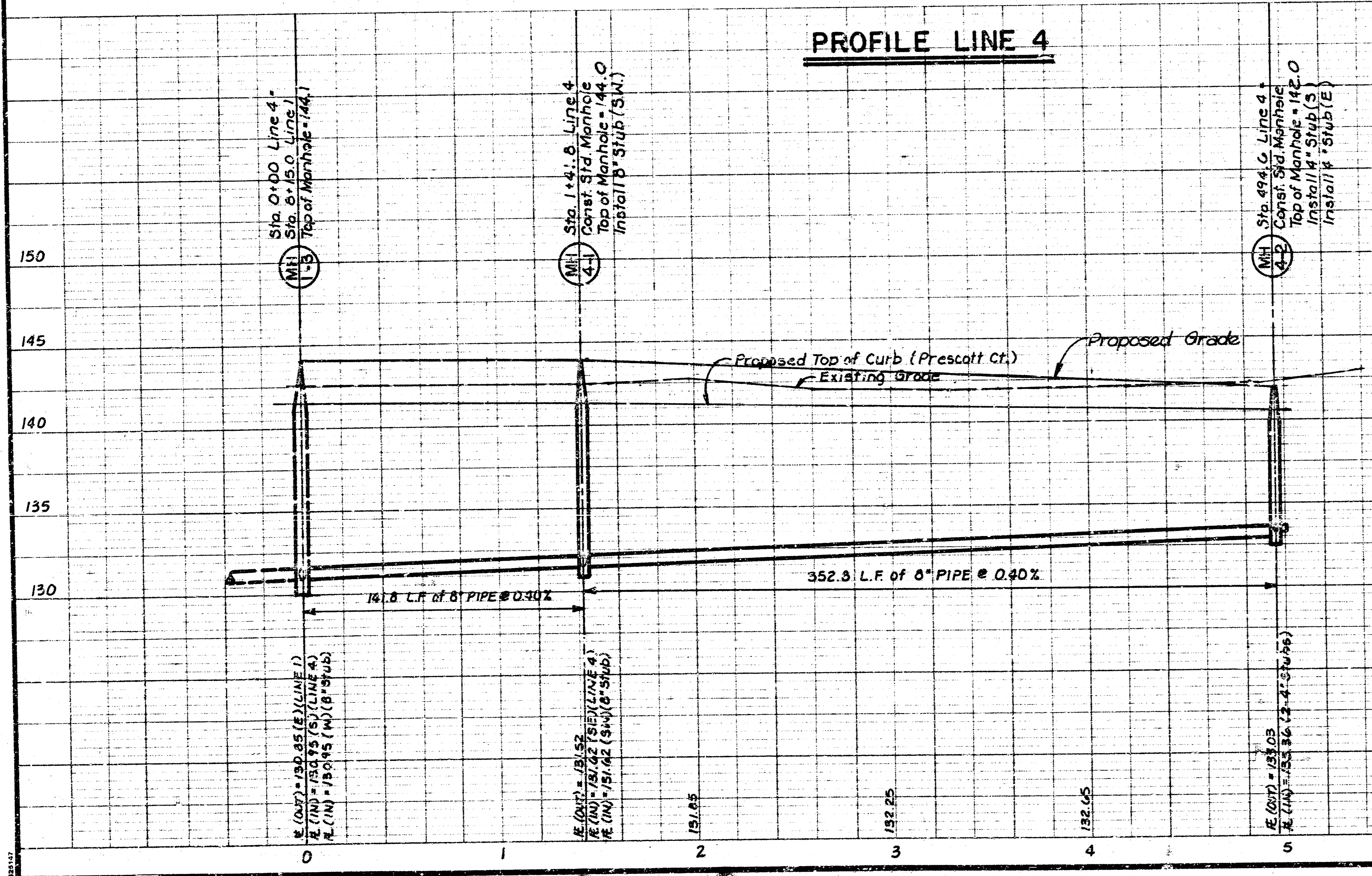
FILMED FROM THE BEST AVAILABLE COPY



SCALE: 1" = 40' HORIZ.
 1" = 5' VERT.

LINE NO.	STATION	FLOWLINE	TOP OF RISER	LOT	BLOCK
4	0+30	W	131.07	49	4
4	0+35	E	131.09	16	2
4	1+05	W	131.37	48	4
4	1+62	W	131.70	26	2
4	2+00	W	131.85	17	2
4	2+40	W	132.01	25	2
4	3+00	W	132.25	18	2

PLAN - LINE 4



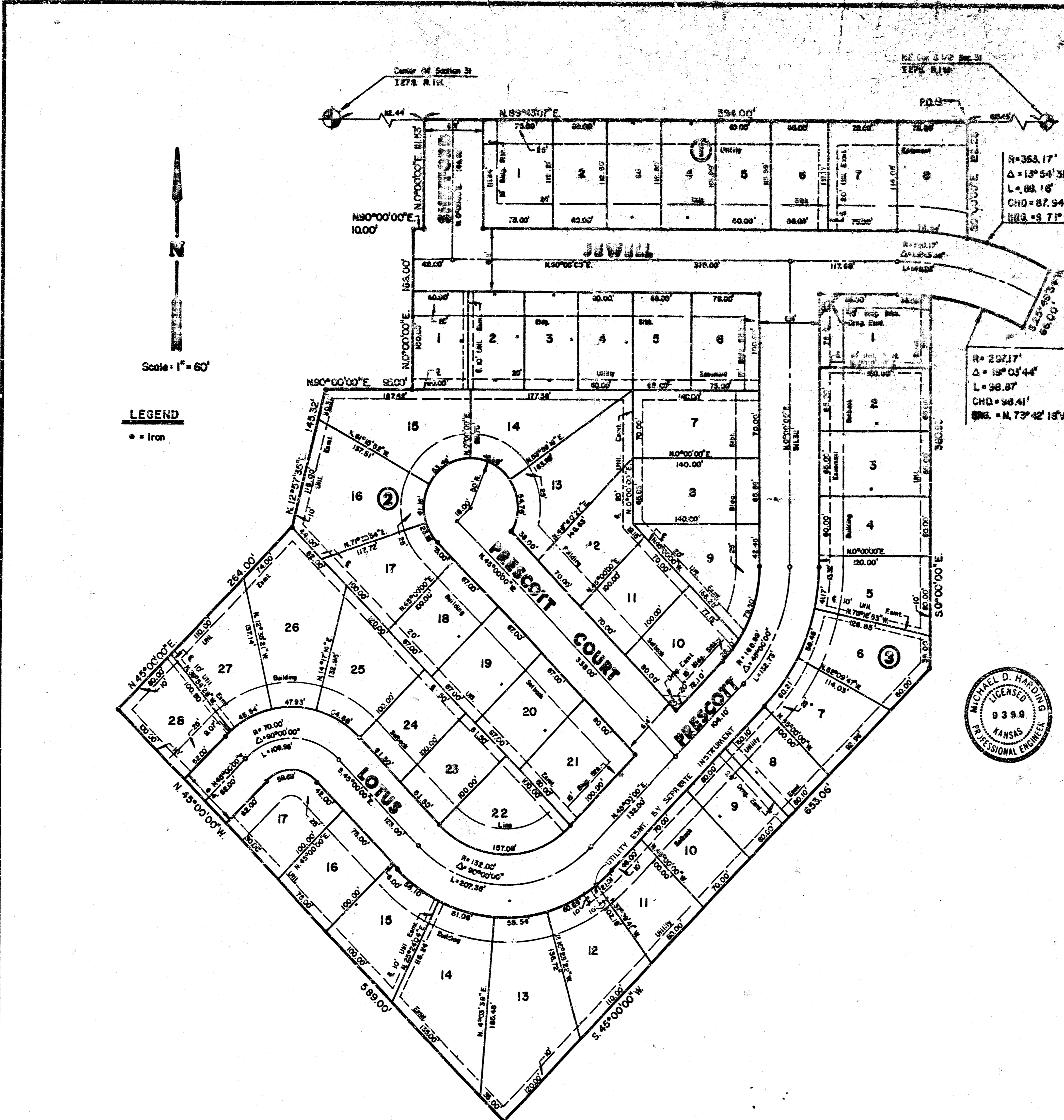
PROFILE LINE 4

08 -> 8 ->

FINAL PLAT OF PAWNEE MESA THIRD ADDITION

AN ADDITION TO WICHITA, SEDGWICK COUNTY, KANSAS

#688303



I, Michael D. Harding, a Civil Engineer in Kansas, do hereby certify that I have been in responsible charge of surveying and platting of "Pawnee Mesa Third Addition", an addition to Wichita, Sedgwick County, Kansas, into lots, blocks and streets, the same being accurately set forth in the accompanying plat and described as follows:

A replat of Lots 1 through 7 inclusive; Block 2, a portion of Lot 3, Block 4, Lots 4 through 28 inclusive; Block 4, and Lots 7 through 22 inclusive, Block 5, all within Pawnee Mesa Addition, an addition to Wichita, Sedgwick County, Kansas, lying in the south half of Section 31, Township 27 south, Range 1 west of the 6th P.M., more particularly described as follows:

Beginning at the northeast corner of Lot 7, Block 2, Pawnee Mesa Addition, an addition to Wichita, Sedgwick County, Kansas, said point also being on the north line of the south half of Section 31, Township 27 south, Range 1 west, 513.43 feet westerly bearing S 89° 43' 07" W from the northeast corner of the south half of Section 31; thence S 0° 00' 00" E, 122.28 feet to a point on a curve to the right having a radius of 343.17 feet and a central angle of 13° 54' 31" and a long chord of 87.94 feet bearing S 71° 07' 40" E; thence along said curve an arc length of 88.16 feet; to the southwest corner of Lot 8, Block 2, Pawnee Mesa Addition; thence S 25° 49' 34" W, 66.00 feet to a point on a curve to the left having a radius of 297.17 feet, a central angle of 19° 03' 44", and a long chord of 98.41 feet bearing N 73° 42' 18" W; thence along said curve an arc length of 98.87 feet; thence S 0° 00' 00" E, 380.93 feet; thence S 45° 00' 00" W, 653.06 feet; thence N 45° 00' 00" W, 588.00 feet; thence N 45° 00' 00" E, 264.00 feet; thence N 12° 57' 35" E, 145.32 feet; thence N 90° 00' 00" E, 95.00 feet; thence N 0° 00' 00" E, 166.00 feet; thence S 90° 00' 00" E, 10.00 feet; thence N 0° 00' 00" E, 111.53 feet to a point on the north line of the south half of said Section 31; thence N 89° 43' 07" E, 594.00 feet to the point of beginning; containing 13.31 acres, more or less.

All lots, easements, building setbacks and streets within the above described property are being vacated and replatted by virtue of K.S.A. 12-512 (b). I hereby certify that the details of this plat are correct to the best of my knowledge and belief this 7th day of March, 1984.

Michael D. Harding
 MICHAEL D. HARDING
 LICENSED
 9399
 KANSAS
 PROFESSIONAL ENGINEER

Michael D. Harding
 Michael D. Harding, P.E.
 Mid-Kansas Engineering Consultants, P.A.
 240 North Rock Road, Suite 130
 Wichita, Kansas 67205

Know all men by these presents that we the undersigned property owners of the land as above set forth in the Engineers Certificate have caused the same to be surveyed and platted into lots, blocks and streets, the same to be known as "Pawnee Mesa Third Addition", an addition to Wichita, Sedgwick County, Kansas. Easements for construction and maintenance of public utilities and storm sewers as indicated on the accompanying plat are hereby granted. The streets are hereby dedicated to and for the use of the public.

Alexander L. Dean
 Alexander L. Dean, Exec. Vice. Pres.
Bradley K. Smisor
 Bradley K. Smisor, Sec.-Treas.

STATE OF KANSAS
 COUNTY OF SEDGWICK

Be it remembered that on this 7th day of March, 1984, before me, a Notary Public in and for said State and County, came Builders, Inc. by Alexander L. Dean, Exec. Vice-Pres. and Bradley K. Smisor, Sec.-Treas. of Builders, Inc., to me personally known to be the same persons who executed the foregoing instrument of writing on behalf of the corporation and duly acknowledged the execution of the same. In testimony whereof I have hereunto set my hand and affixed my notarial seal the day and year above written.

Alexandra L. Holt
 Alexandra L. Holt, Notary Public
 My Appointment Expires: 4-21-87

3-17-85

STATE OF KANSAS
 COUNTY OF SEDGWICK

This is to certify that this instrument was filed for record in the register of Deeds Office at 9:30 AM on the 15th day of MAY, 1984.

Bette F. McCart
 Bette F. McCart, Register of Deeds
Pat Settler
 Pat Settler, Deputy

This plat of "Pawnee Mesa Third Addition" has been submitted to and approved by the Wichita-Sedgwick County Metropolitan Area Planning Commission.

Dated this 26th day of January, 1984.

Wichita-Sedgwick County Metropolitan Area Planning Commission

Robert K. Chisholm
 Robert K. Chisholm, Chairman
Robert A. Lakin
 Robert A. Lakin, Secretary

This plat approved and all dedications shown hereon, if any, accepted by the Board of City Commissioners of the City of Wichita, Kansas, this 3rd day of April, 1984.

Margaret Wright
 Margaret Wright, Mayor
Donald C. Girick
 Donald C. Girick, City Clerk

This plat approved and all dedications shown hereon, if any, accepted by the Board of County Commissioners of Sedgwick County, Kansas, this 25th day of April, 1984.

Jack Sparr
 Jack Sparr, Chairman
Donald E. Cragg
 Donald E. Cragg, Commissioner
Tom Scott
 Tom Scott, Commissioner

Attest: *Dorothy K. White*
 Dorothy K. White, County Clerk

Entered on transfer record this 30th day of April, 1984.

Dorothy K. White
 Dorothy K. White, County Clerk

20.00

FILMED FROM THE BEST AVAILABLE COPY