

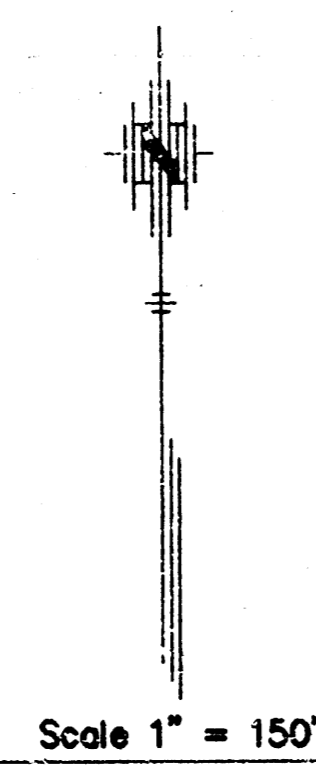
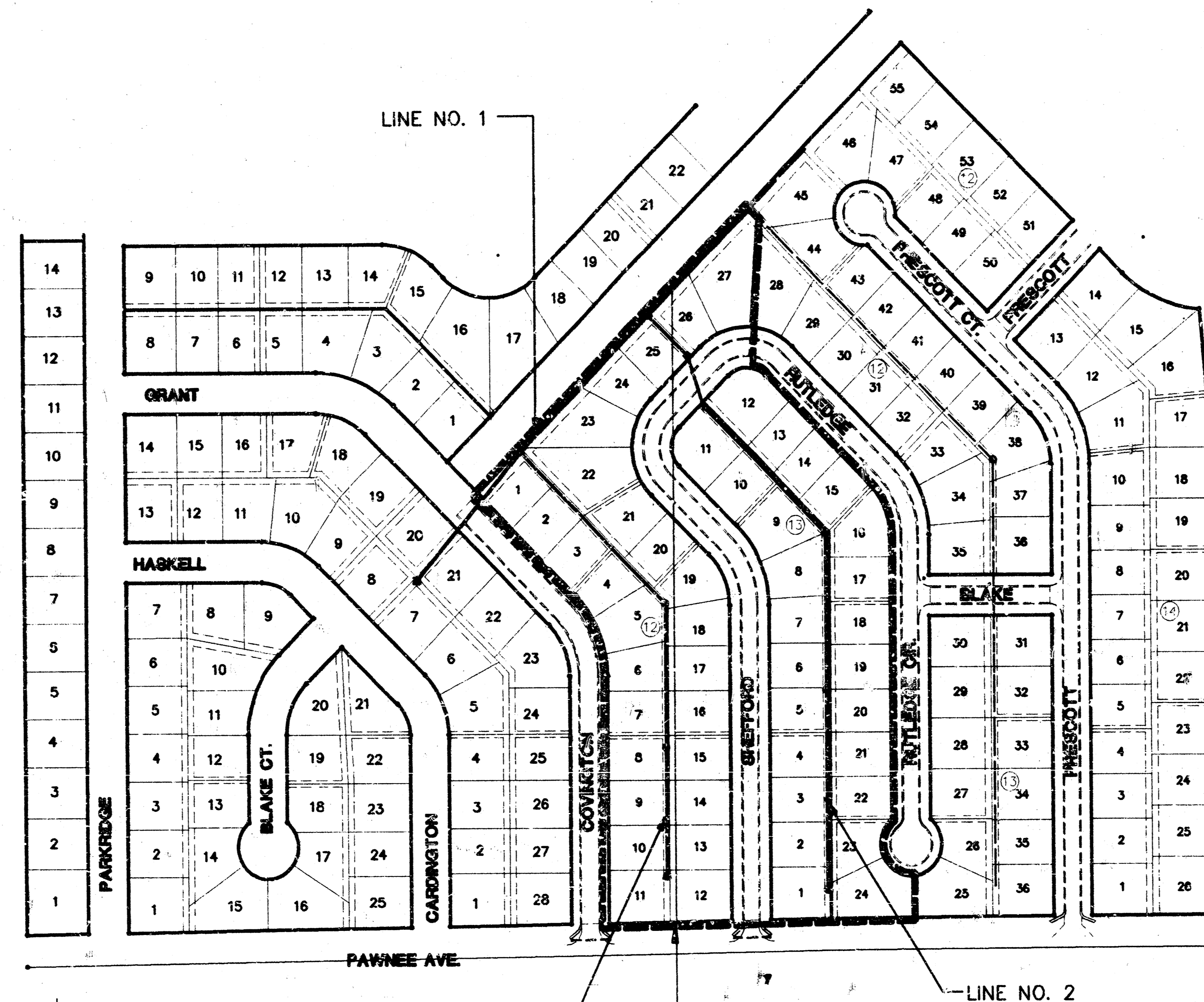
CONSTRUCTION PLANS
SANITARY SEWER EXTENSIONS
PAWNEE MESA ADDITION-PHASE II
 TO
THE CITY OF WICHITA, KANSAS
LATERAL 16, MAIN 13, SOUTHWEST INTERCEPTOR

MICHAEL E. LINDEBAK, P.E. - CITY ENGINEER
 PROJECT NO. 468-82701
 INDEX CODE 743096

GENERAL NOTES:

1. Existing utility lines and their location, as shown on the plans, represent the best information obtainable for design. The contractor will be required to work around existing utilities within the right-of-way which do not conflict with proposed construction.
2. Rubble from the removal of miscellaneous structures and excess excavation which is to be wasted shall be the disposed of on sites to be provided by the Contractor. These sites shall be approved by the Engineer as to suitability, appearance and site location. Locations that, in the opinion of the Engineer, will leave an unsightly appearance will not be approved.

 All disposal sites must be approved by the Kansas Department of Health and Environment. Material either stockpiled or disposed of in a flood plain would require a Kansas State Board of Agriculture permit. Any material dumped in waters of the United States or wetlands is subject to U.S. Corps of Engineers permitting regulations. Any material buried or stockpiled beyond approved construction limits would require additional archaeological investigations unless buried in a previously approved borrow location.
3. The Contractor shall be responsible for maintaining continuous flow of sewage through construction. Contractor's proposed method for maintaining sewage flow shall be approved by the Engineer. Cost of maintaining flow of sewage through construction will not be paid for directly and this cost shall be considered as subsidiary to the other pay items of the work.
4. The Contractor shall be responsible for preserving property irons. The Contractor will be required to re-establish any property irons which are damaged or destroyed by his construction operations. Such irons shall be re-established by a licensed land surveyor in accordance with state laws.
5. Trees and shrubs in public right-of-way which are in direct conflict with proposed new construction shall be removed by the Contractor with the Engineer's approval. Trees and shrubs which are not in direct conflict with the proposed new construction shall be saved and protected from damage.
6. Contractor shall vacuum test all manholes according to the City of Wichita standard specifications.
7. The tops of all Manholes to be set 0.4 feet above existing ground unless otherwise noted.
8. The Contractor shall provide construction staking.
9. Sewer service lines that cross over the top of water mains shall be encased in concrete, 10 feet each side of the crossing. If the sewer crosses below the water line, the sewer line joints must be at least 10 feet away from the water line or the sewer must be encased in concrete as described above. 12" clearance must be maintained between the sewer and water lines.
10. All disturbed areas shall be seeded with temporary rye grass within 14 days of disturbance at a rate of 200 lbs. per acre, except where otherwise noted on the plans.



MAY 1997

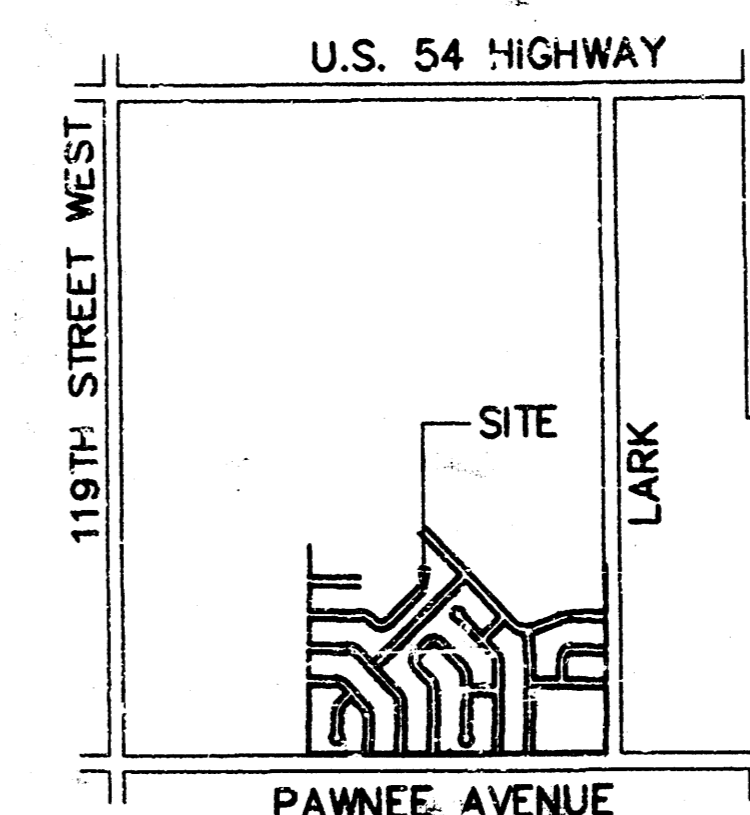
PLANS PREPARED
 BY
POE & ASSOCIATES OF KANSAS, INC.
 Consulting Engineers
 5940 E. Central Suite 200 ■ Wichita KS 67208 ■ 316/685-4114

INDEX

| | |
|---------------------------|---------|
| TITLE SHEET | SHEET 1 |
| LINE NO. 1 | SHEET 2 |
| LINE NO. 2 | SHEET 3 |
| LINE NO. 3 | SHEET 4 |
| TYPE "P" MANHOLE | SHEET 5 |
| COORDINATE POINTS LIST | SHEET 6 |
| EASEMENT GRADING PLAN | SHEET 7 |
| PAWNEE MESA ADDITION PLAT | SHEET 8 |

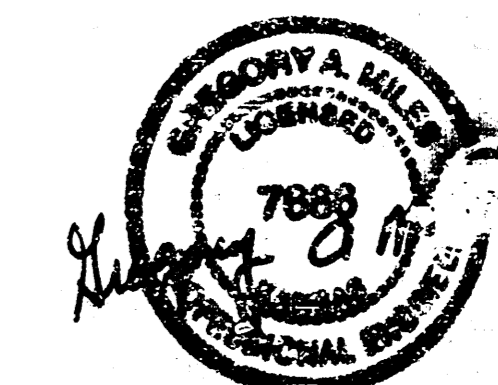
BENCH MARKS

- (City of Wichita Datum)
- BM #1 City of Wichita Disc
 34' S. of CL Pawnee & 6' W. of Hedge Row S.
 Elev. 145.50
 - BM #2 "D" Cut in center of E. Hdwl. of Drainage Structure
 under Grant near NW corner of Lot 55, Block 12
 Pawnee Mesa Addition
 Elev. 144.28

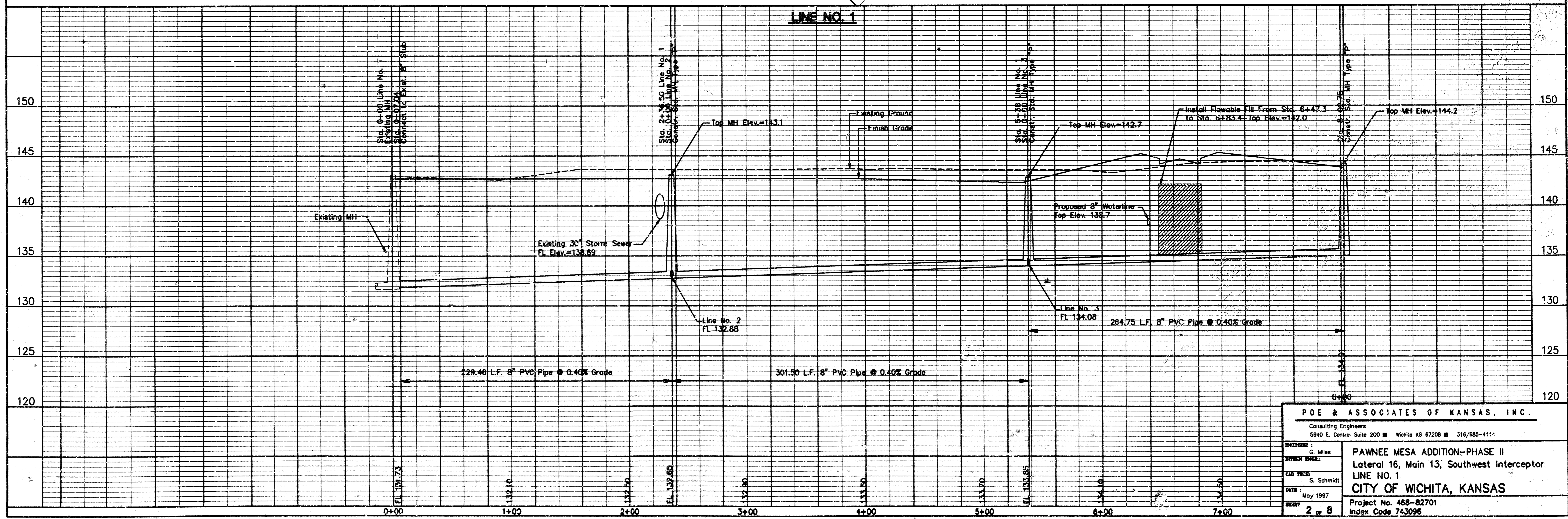
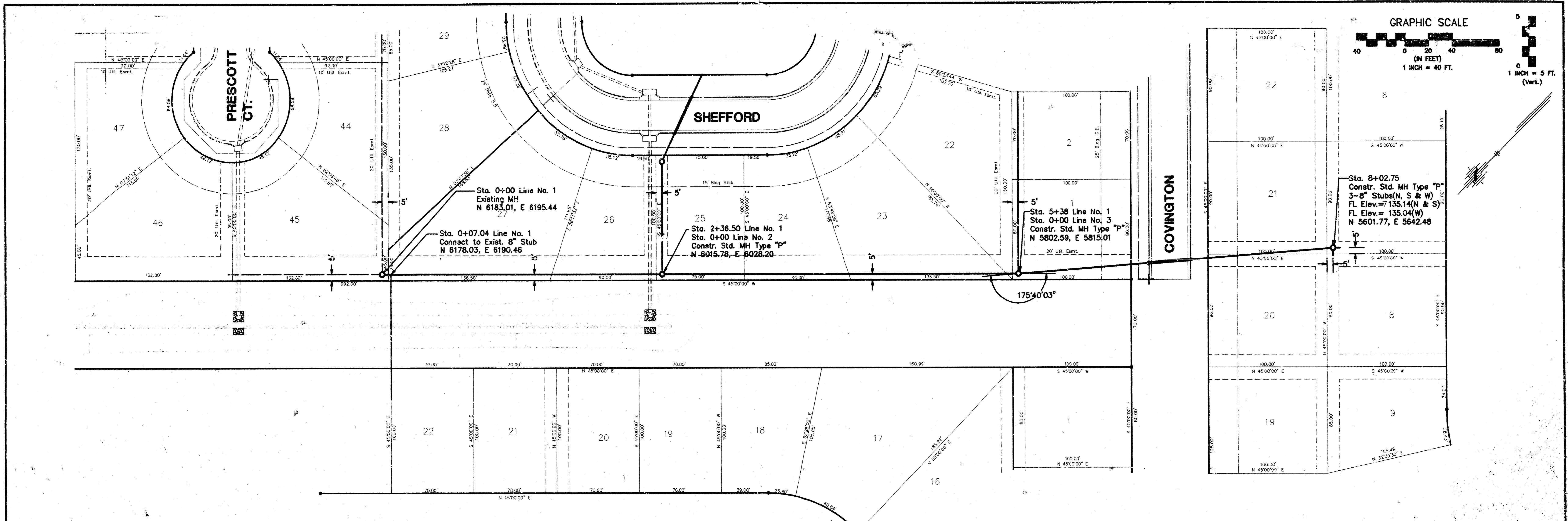


LOCATION MAP

*Booked
 11-28-97
 Per Plan
 12/30/97
 RDL*



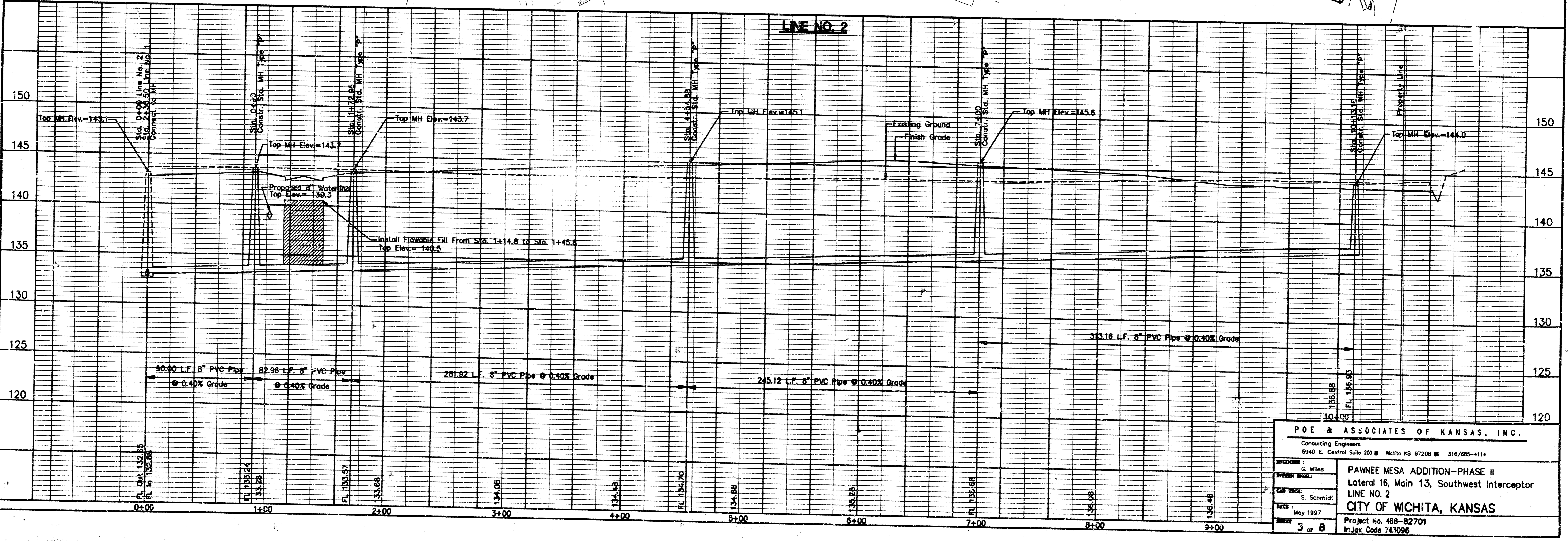
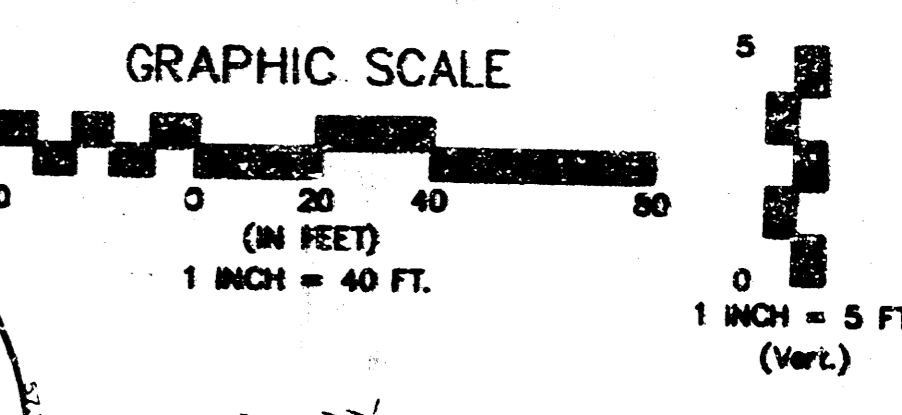
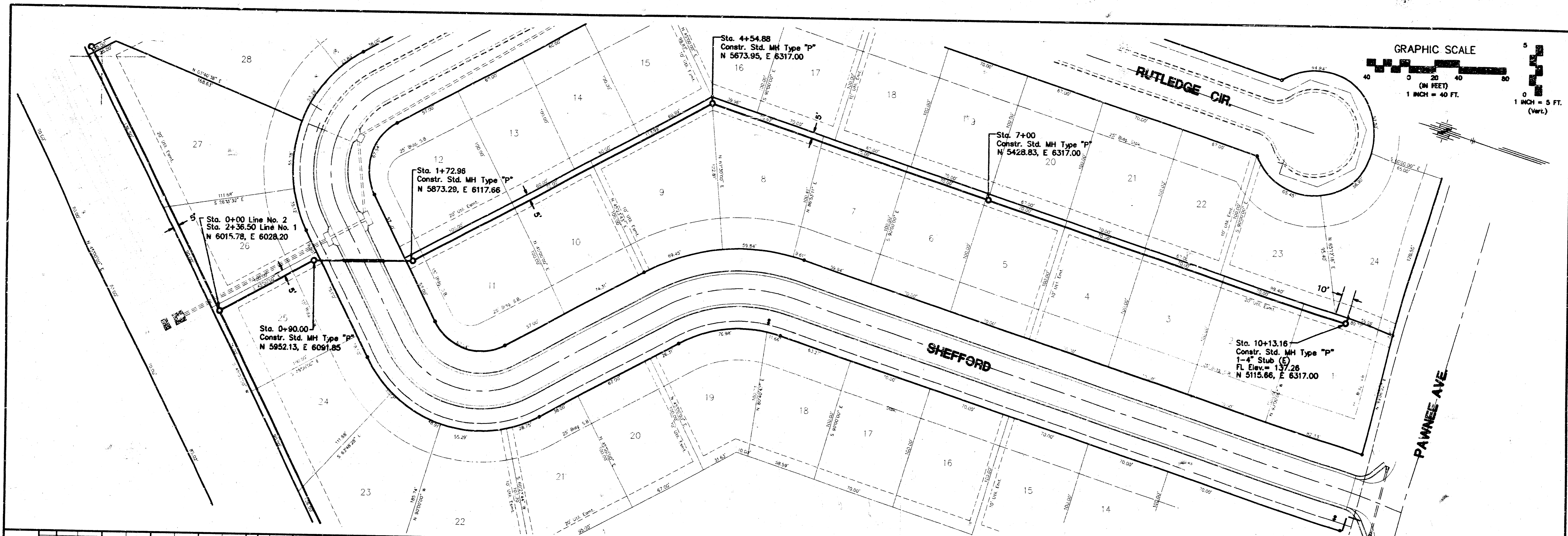
6/23/97



POE & ASSOCIATES OF KANSAS, INC.
Consulting Engineers
2940 E. Central Suite 200 ■ Wichita KS 67208 ■ 316/885-4114

DESIGNED BY: G. Miles
INVESTMENT ENGINEER:
CADD DRAWN BY: S. Schmidt
DATE: May 1997
SHEET: 2 of 8

PAWNEE MESA ADDITION-PHASE II
Lateral 16, Main 13, Southwest Interceptor
LINE NO. 1
CITY OF WICHITA, KANSAS
Project No. 468-82701
Index Code 743096

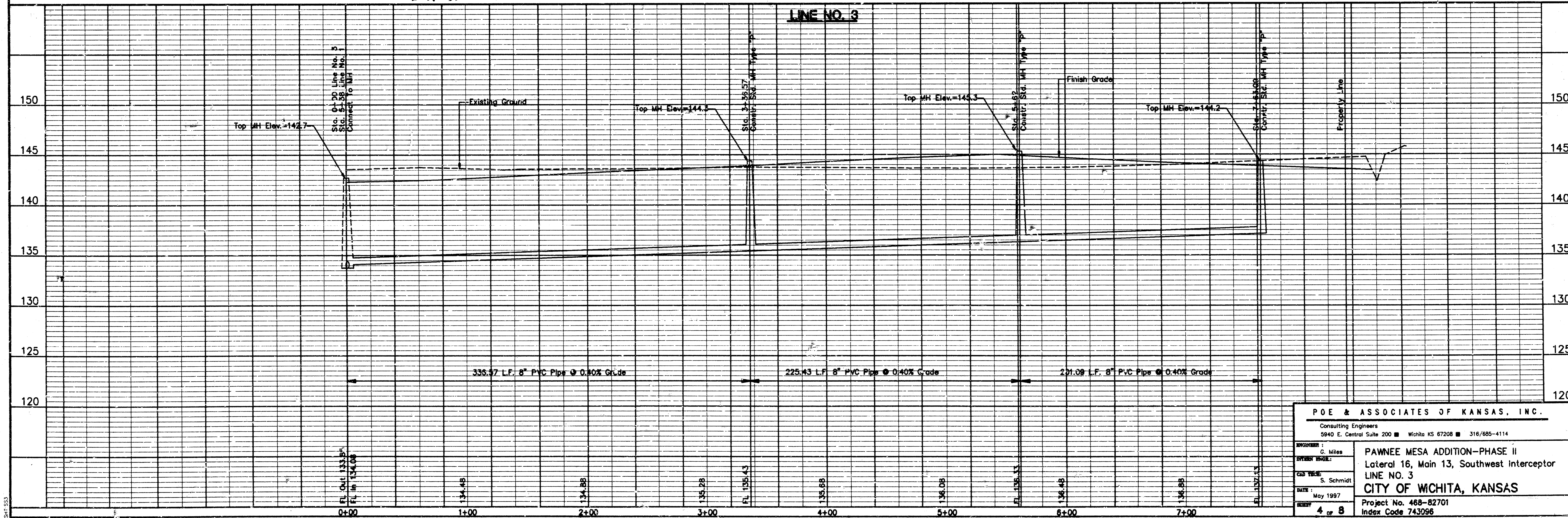
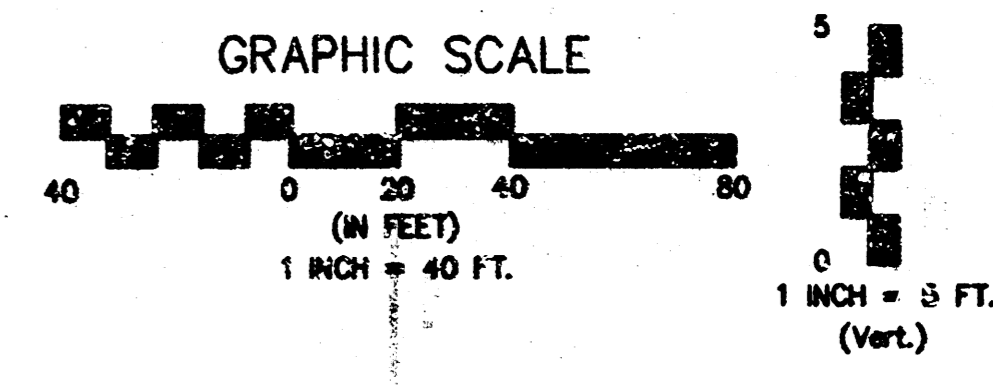
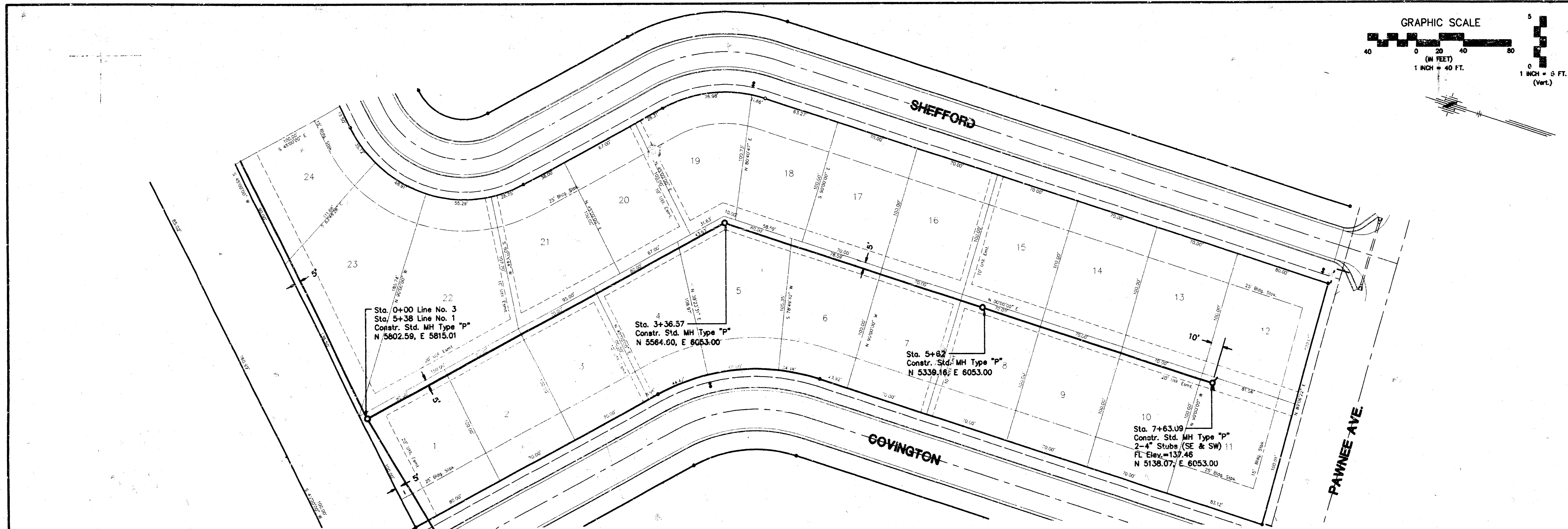


POE & ASSOCIATES OF KANSAS, INC.
 Consulting Engineers
 5940 E. Central Suite 200 ■ Wichita KS 67208 ■ 316/685-4114

ENGINEER: C. Miles
 SUPERVISOR: S. Schmidt
 DATE: May 1997
 SHEET: 3 of 8

PAWNEE MESA ADDITION—PHASE II
 Lateral 16, Main 13, Southwest Interceptor
 LINE NO. 2
CITY OF WICHITA, KANSAS
 Project No. 468-82701
 Injex Code 743096

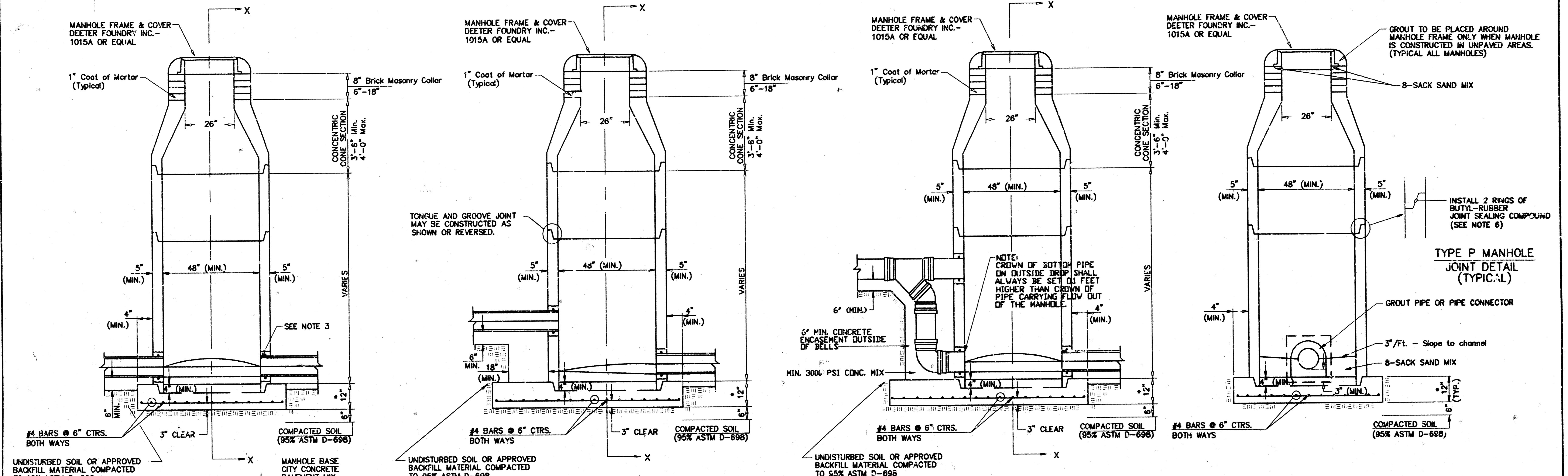
F:\MPS\DATA\PI\B2701\BASE Wed Jun 11 15:23:49 1997 Steve Schmidt-Poe & Assoc.



| | |
|--|---|
| POE & ASSOCIATES OF KANSAS, INC. Consulting Engineers 5940 E. Central Suite 200 ■ Wichita KS 67208 ■ 316/685-4114 | |
| PROJECT: C. Miles CLIENT: S. Schmidt DATE: May 1997 SHEET: 4 of 8 | PAWNEE MESA ADDITION-PHASE II Lateral 16, Main 13, Southwest Interceptor LINE NO. 3 CITY OF WICHITA, KANSAS Project No. 468-82701 Index Code 743096 |

F:\MAPS\UDC\PAWNEE.MXD Wed Jun 11 15:26:28 1997 Steve Schmidt-Poe & Assoc.

SEWER APPURTENANCES - DETAILS



TYPE P STANDARD MANHOLE
TYPE P INSIDE DROP MANHOLE
TYPE P OUTSIDE DROP MANHOLE
SECTION X (TYPICAL)

- GENERAL NOTES**
- PRECAST MANHOLE NOTES**
- ALL PRECAST CONCRETE MANHOLE SECTIONS SHALL CONFORM TO THE LATEST REVISIONS OF A.S.T.M. C478 AS MODIFIED BY THE SPECIFICATIONS.
 - NON-SHRINK GROUT SHALL BE NON-METALLIC TYPE.
 - APPROVED FLEXIBLE WATERSTOP GASKETS SHALL BE INSTALLED TO JOIN THE SEWER TO THE MANHOLE WALL WHEN A.B.S. COMPOSITE PIPE OR P.V.C. PIPE IS USED. FOR OTHER TYPES OF PIPE THE SEWER SHALL BE GROUTED IN PLACE WITH NON-SHRINK GROUT. THE SEWER PIPE SHALL BE SUPPORTED WITH CONCRETE ENCASEMENT A MINIMUM OF 3 FEET FROM THE MANHOLE WALL AND TO THE FIRST JOINT FOR V.C.P. SUCH THAT THE JOINT REMAINS FLEXIBLE.
 - ALL INSIDE SURFACES OF THE CONCRETE MANHOLE WHICH WOULD BE EXPOSED TO SEWER GAS SHALL BE COATED WITH 2 COATS THEMEC SERIES 68 HI-BUILD EPOXOLINE, DRY THICKNESS OF 8 MILS (MIN.).
 - EXTERIOR MANHOLE WALLS SHALL BE COATED WITH 1 COAT MOBILARMA 833 BITUMINOUS COATING.
 - JOINT SEALING COMPOUND SHALL BE KENT SEAL NO. 2 OR APPROVED EQUAL.
 - PRECAST MANHOLES SHALL BE SET AT LEAST 4 INCHES INTO THE MANHOLE BASE.
 - TOP OF MANHOLE FLOOR SLAB SHALL BE AT LEAST 3 INCHES BELOW THE FLOW LINE OF THE OUTLET PIPE TO INSURE SUFFICIENT MINIMUM THICKNESS OF SHAPED INVERT.
 - LIFTING HOLES SHALL BE FILLED WITH NON-SHRINK GROUT AND THE INTERIOR SURFACE COATED AS SPECIFIED.
 - MORTAR USED IN MASONRY CONSTRUCTION SHALL CONTAIN 8 SACKS OF CEMENT PER CUBIC YARD. CONCRETE USED IN MANHOLE BASES SHALL CONFORM TO THE REQUIREMENTS OF CONCRETE FOR CONCRETE PAVEMENT CONSTRUCTION AS SPECIFIED IN THE CITY STANDARD PAVING SPECIFICATIONS USING CITY CONCRETE PAVEMENT MIX WITHOUT AIR ENTRAINING ADMIXTURE. MORTAR SHALL BE PLACED AROUND THE MANHOLE RING AS SHOWN ON THE DRAWINGS WHEN MANHOLES ARE CONSTRUCTED IN UNPAVED AREAS. MANHOLES CONSTRUCTED WHERE PIPE SIZES ARE SMALLER THAN 24" SHALL HAVE AN INSIDE DIAMETER OF 4". MANHOLES CONSTRUCTED WHERE PIPE SIZES ARE 24" OR LARGER SHALL HAVE AN INSIDE DIAMETER OF 5". COMPLETED MANHOLE SHALL BE WITHOUT LEAKS AND WATER TIGHT.
 - REINFORCING STEEL SHALL BE INSTALLED IN THE MANHOLE BASES AND SHALL CONSIST OF NO. 4 BARS PLACED ON 6" CENTERS IN BOTH DIRECTIONS. THE MANHOLE BASE REINFORCEMENT SHALL BE PLACED AT LEAST 3" ABOVE THE BOTTOM OF THE MANHOLE BASE. ALL COSTS FOR FURNISHING AND INSTALLING REINFORCING STEEL SHALL BE INCLUDED IN THE UNIT PRICE BID FOR THE MANHOLE.
 - OPENINGS SHALL BE CUT INTO THE MANHOLE WALL WHEN OUTSIDE DROPS ARE CONSTRUCTED ON EXISTING MANHOLES. SUCH OPENINGS CUT INTO EXISTING MANHOLES SHALL BE AS SMALL AS PRACTICAL TO FACILITATE INSTALLING AND GROUTING THE NEW PIPE IN PLACE. WATERSTOP GASKETS SHALL BE USED WITH P.V.C. AND A.B.S. COMPOSITE PIPE. THE NEW PIPE SHALL BE GROUTED INTO THE OPENING USING AN APPROVED NONSHRINK GROUT FOR THE FULL MANHOLE WALL THICKNESS. THE EXTERIOR OF THE COMPLETED CONNECTION SHALL BE SEALED WITH AN APPROVED BITUMINOUS COATING SUCH THAT THE CONNECTION WILL BE WATER TIGHT. FLOOR OF MANHOLE SHALL BE MODIFIED TO FORM NEW FLOW CHANNEL FOR THE NEW CONNECTION AS INDICATED BY THE DRAWING. THIS WORK, INCLUDING MODIFICATION OF MANHOLE FLOOR, SHALL BE PAID FOR AT THE UNIT PRICE BID FOR OUTSIDE DROP STACK CONSTRUCTED ON EXISTING MANHOLE.
 - THE FLOORS OF ALL MANHOLES SHALL BE SHAPED WITH FLOW CHANNELS SUCH THAT THE MANHOLES WILL BE SELF CLEANING AND FREE OF AREAS WHERE SOLIDS COULD BE DEPOSITED AS SEWAGE FLOWS THROUGH THE MANHOLE FROM ALL INLET PIPES TO THE OUTLET PIPE. FLOW CHANNELS SHALL BE FORMED TO MATCH THE BOTTOM HALVES OF THE INFLOWING PIPES AND THE OUTFLOWING PIPE AS SHOWN BY THE DRAWINGS EXCEPT FOR INSIDE DROP MANHOLES. FLOW CHANNELS FOR INSIDE DROP MANHOLES SHALL BE CONSTRUCTED AS INDICATED BY THE DRAWING. MANHOLE FLOORS SHALL HAVE SLOPES OF 3 INCHES PER FOOT IN THE AREAS OUTSIDE OF THE FLOW CHANNELS SLOPED TOWARD THE FLOW CHANNELS. PIPES LAID THROUGH MANHOLES SHALL HAVE THE TOP HALF REMOVED TO NEAT LINES FOR THE FULL INSIDE DIAMETER OF THE MANHOLE. MANHOLE FLOORS SHALL BE SHAPED AROUND THE BOTTOM HALF OF THE PIPE WHICH FORMS THE FLOW CHANNEL.
 - PIPES INSTALLED WITHIN THE EXCAVATION MADE FOR THE MANHOLE SHALL BE CRADLED WITH CONCRETE TO THE LIMITS OF THE MANHOLE EXCAVATION. WHEN CLAY PIPE IS USED, THE CRADLE SHALL EXTEND TO THE FIRST JOINT OUTSIDE THE MANHOLE. THE CRADLE SHALL BE TERMINATED AT THE CLAY PIPE JOINT IN A MANNER WHICH WILL MAINTAIN THE FLEXIBILITY OF THE JOINT. COST OF CRADLE WITHIN MANHOLE EXCAVATION OR TO CLAY PIPE JOINTS ADJACENT TO MANHOLE SHALL BE INCLUDED IN THE UNIT PRICE BID FOR THE MANHOLE.
 - MANHOLE COVER CASTINGS AND MANHOLE FRAME CASTINGS SHALL CONFORM TO THE REQUIREMENTS AS INDICATED IN THE STANDARD SPECIFICATIONS AND AS SHOWN IN THE STANDARD DETAIL DRAWING.
 - THE VERTICAL DROP IN INSIDE DROP MANHOLES SHALL NOT EXCEED 2' FOR INFLOWING PIPES SIZED 12" OR SMALLER AND 2' FOR INFLOWING PIPES LARGER THAN 12". THE CROWNS OF INFLOWING PIPES SHALL NEVER BE SET LOWER THAN THE CROWN OF THE OUTFLOWING PIPE.
 - STANDARD MANHOLES AND STANDARD INSIDE DROP MANHOLES SHALL BE BID AS STANDARD MANHOLES FOR THE TYPE AND DIAMETER INDICATED. OUTSIDE DROP MANHOLES SHALL BE BID AS STANDARD OUTSIDE DROP MANHOLES FOR THE TYPE AND DIAMETER INDICATED. ALL MANHOLE DIAMETERS WILL BE 4' UNLESS INDICATED OTHERWISE.
 - A BRICK MASONRY COLLAR SHALL BE INSTALLED BETWEEN THE CAST IRON FRAME AND THE CONCENTRIC BONE. THE COLLAR WILL HAVE 8" WALLS AND A VERTICAL HEIGHT OF 6" MINIMUM AND 18" MAXIMUM. A 1" COAT OF MORTAR WILL BE PLASTERED ON THE OUTSIDE OF THE COLLAR. THE USE OF PRE-CAST CONCRETE SPACERS FOR MANHOLE TOP ADJUSTMENT IS ALSO ALLOWED.
 - ALL MANHOLE BASE CONSTRUCTION THAT OCCURS IN THE FIELD MUST HAVE A MINIMUM OF EIGHT INCHES OF CONCRETE BELOW THE MANHOLE WALL AND THE WALL SECTION SHOULD EXTEND FOUR INCHES INTO THE BASE RESULTING IN A MINIMUM TOTAL BASE THICKNESS OF 12 INCHES. MONOLITHIC BASE SECTIONS CONSTRUCTED IN THE FACTORY AND CURED AS PER ASTM C478 MUST HAVE A MINIMUM EIGHT INCH THICK CONCRETE BASE. BASE SECTIONS CONSTRUCTED IN THE FACTORY UTILIZING A PREVIOUSLY MANUFACTURED MANHOLE WALL SECTION, AS OUTLINED IN THE ABOVE PARAGRAPH, MUST HAVE A MINIMUM BASE THICKNESS OF EIGHT INCHES WITH THE WALL SECTION EXTENDING FOUR INCHES INTO THE BASE AND BE MANUFACTURED IN COMPLIANCE WITH ASTM C478.

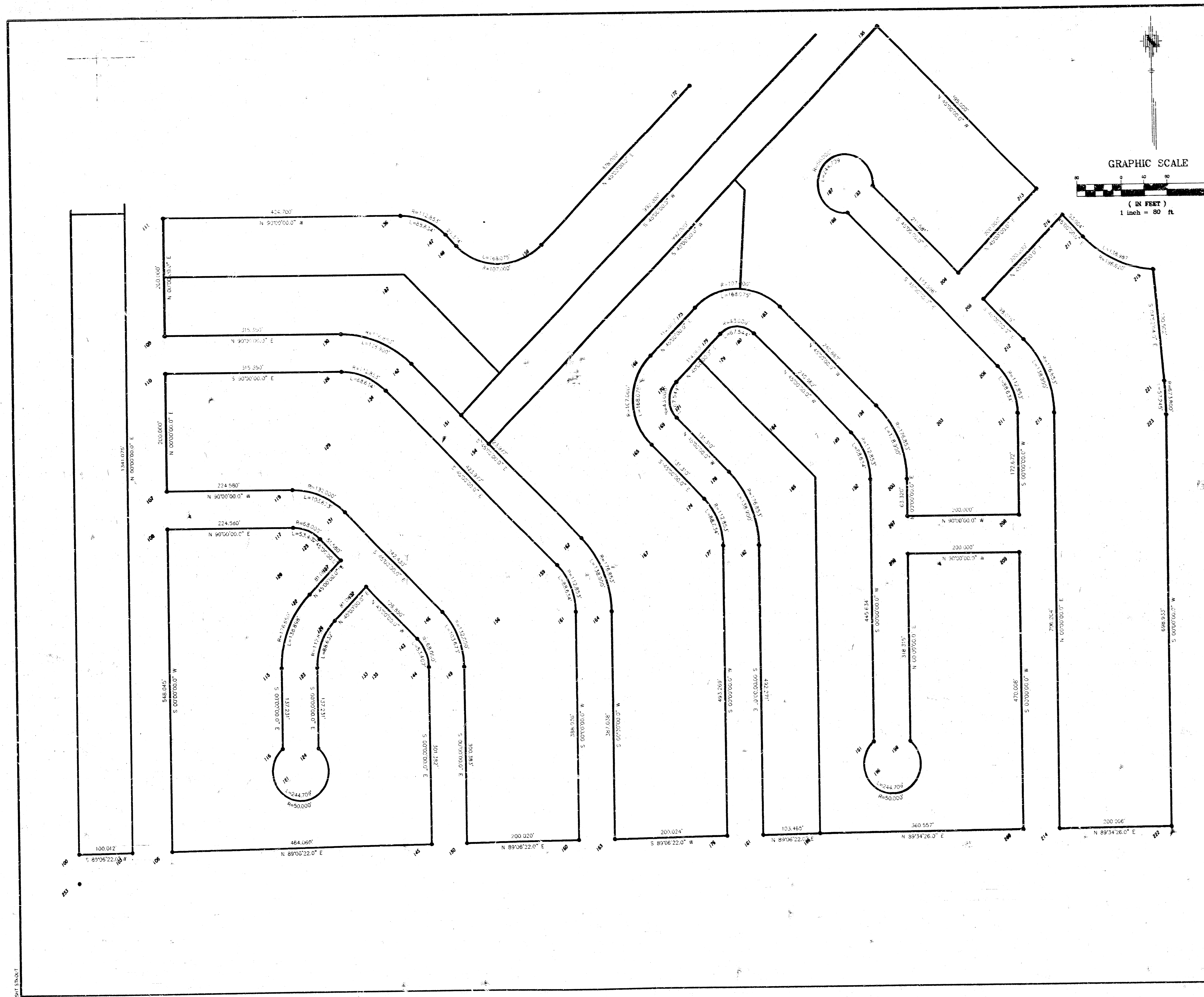
PAWNEE MESA ADDITION
 SANITARY SEWER EXTENSIONS
 LATERAL 16, MAIN 13, SOUTHWEST INTERCEPTOR

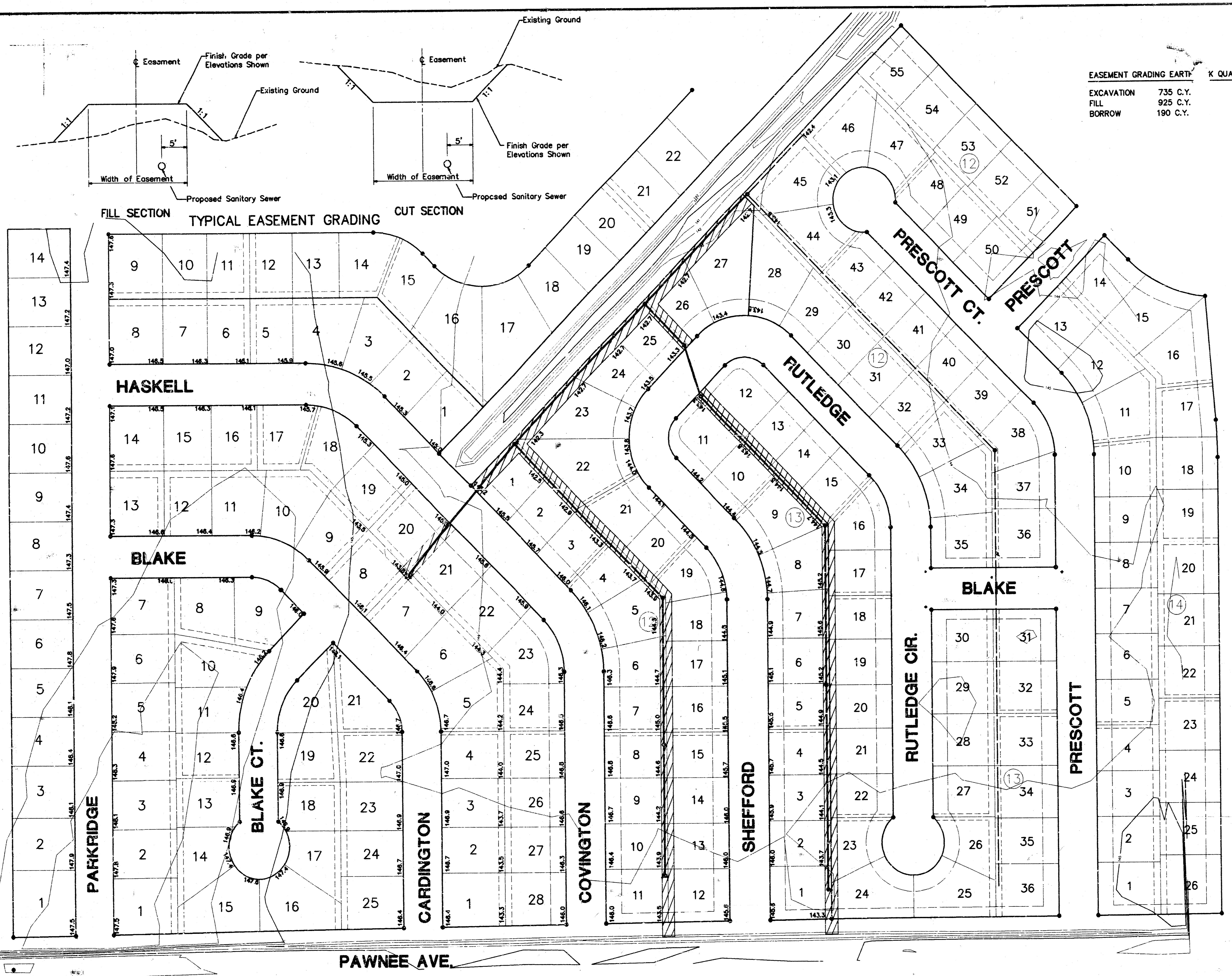
Revised Manhole Base See Note 19

| | | |
|--|---|----------------------|
| <p>THE CITY OF WICHITA</p> <p>CITY ENGINEER'S OFFICE 1000 WEST MAIN STREET WICHITA, KANSAS 67202 (316) 261-4774 FAX</p> | STANDARD TYPE 'P' MANHOLES | |
| | M. E. LINDEBAK P.E. - CITY ENGINEER | |
| | PROJECT NUMBER 468-82701 | SHEET CODE 743086 |
| | DATE MAR 96 | SHEET 5 OF 8 |

F:\APPROVAL\1622\BASE Thu Jun 12 14:43:25 1997 Steve Schmidt-Poe & Assoc.

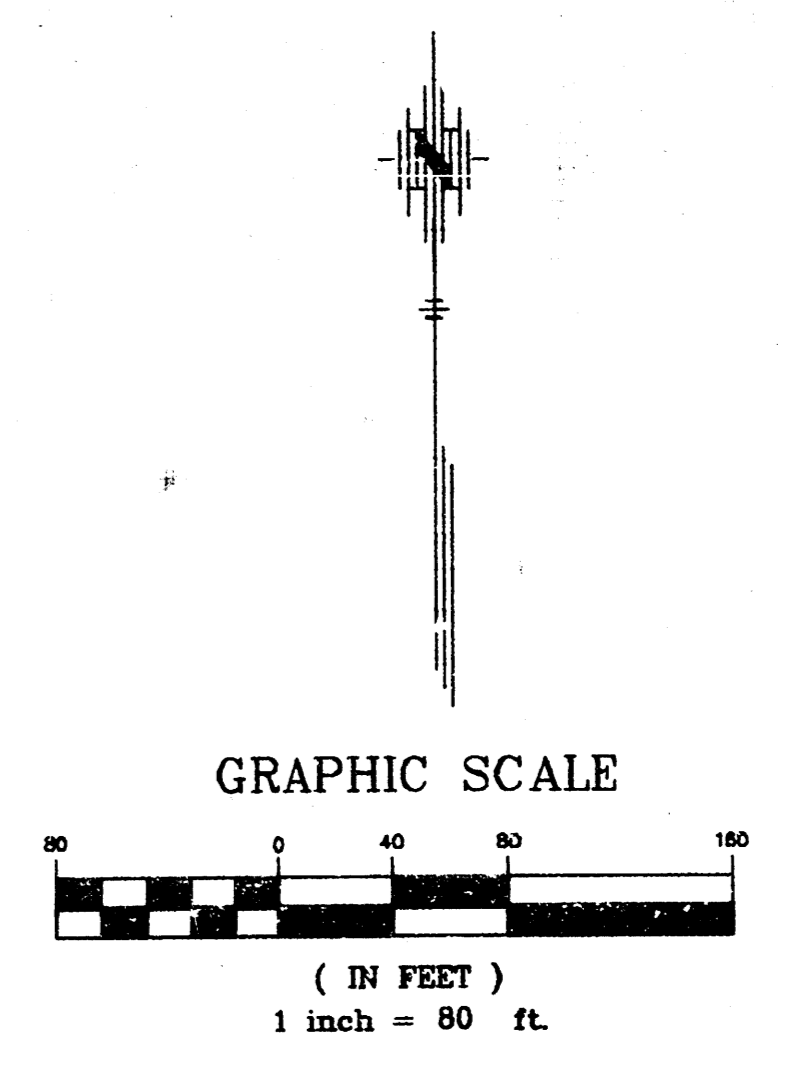
F:\APPROVAL\622\BASE Mod Jun. 11 10:22:01 1997 Steve Schmidt-Poe & Assoc.





EASEMENT GRADING EARTHWORK QUANTITIES

| | |
|------------|----------|
| EXCAVATION | 735 C.Y. |
| FILL | 925 C.Y. |
| BORROW | 190 C.Y. |



NOTE:
Sanitary Sewer Contractor Shall Grade All Shaded
Easements to the Elevations Shown.

BENCHMARKS
(City of Wichita Datum)

1. City of Wichita Disc, 34' S. of CL Pawnee & 6' W. of Hedge Row S. Elev. 145.50
2. "T" Cut in center of E. Hdwl. of drainage structure under Grant near NW corner of Lot 55, Block 12 Pawnee Mesa Addition Elev. 144.28

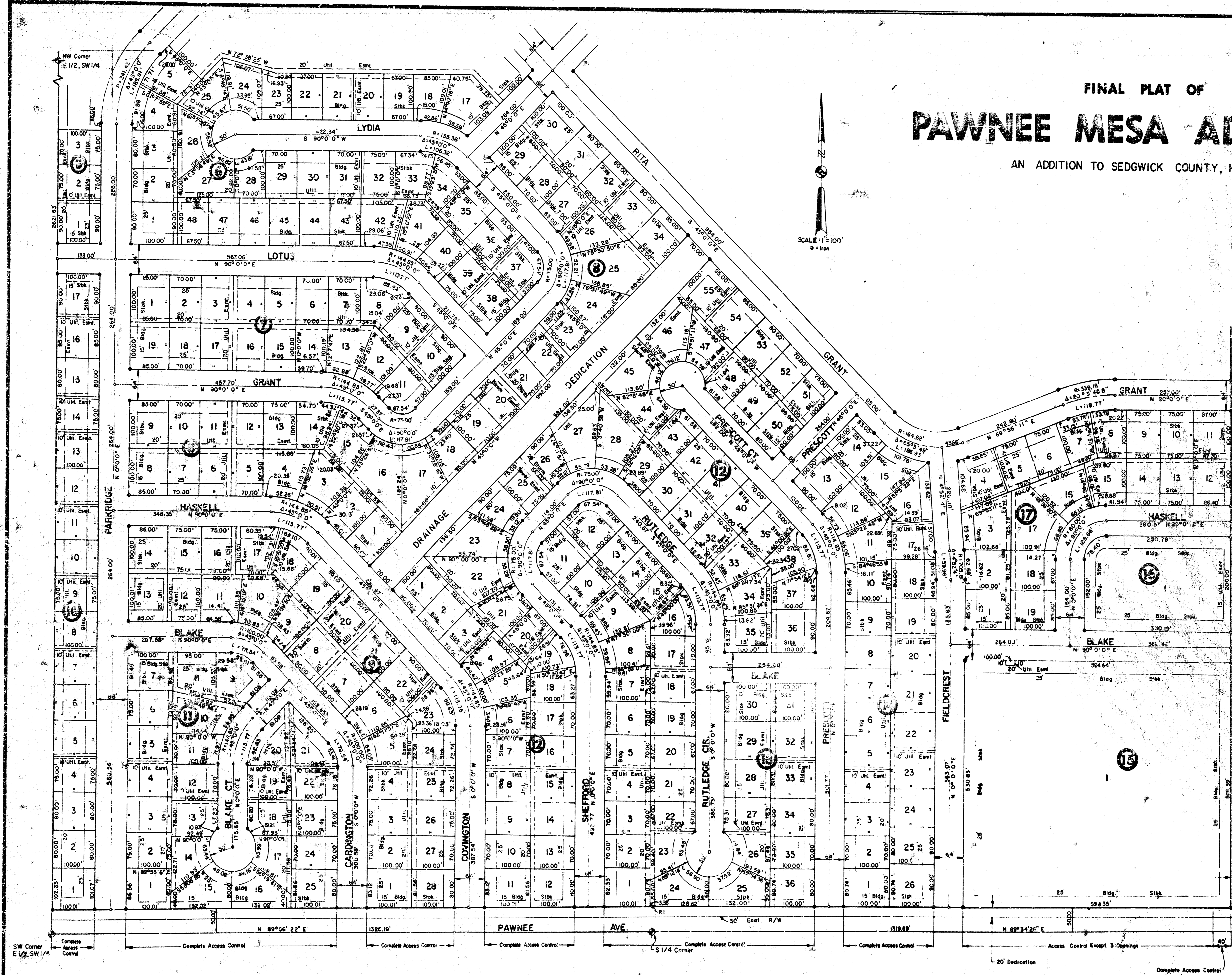
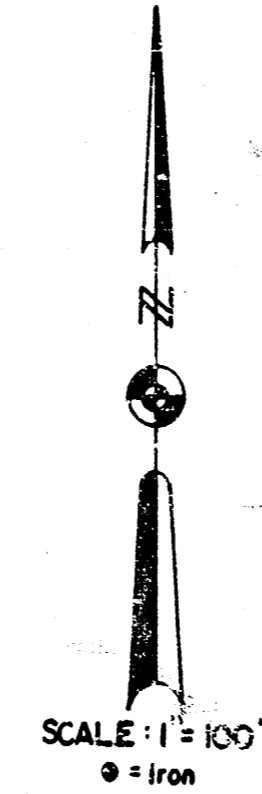
POE & ASSOCIATES OF KANSAS, INC.
Consulting Engineers
5940 E. Central Suite 200 ■ Wichita KS 67208 ■ 316/685-4114

| | | |
|-----------|------------|---|
| ENGINEER: | C. W. POE | PAWNEE MESA ADDITION—PHASE II Easement Grading Plan Lateral 16, Main 13, Southwest Interceptor CITY OF WICHITA, KANSAS Project No. 488-82701 Index Code 743098 |
| DATE: | May 1997 | |
| BY: | S. Schmidt | |
| PROJECT: | 7 OF 8 | |

F:\MAPS\DATA\PAWNEE\BLAKE.TWO JUN 12 11:31:01 AM 1997 D:\BATE SCHEIDT\PAWNEE & HEDGE

FINAL PLAT OF PAWNEE MESA ADDITION

AN ADDITION TO SEDGWICK COUNTY, KANSAS



NE Corner
W 1/2, SE 1/4
Sec. 31, T27S, R/W

This plat of "Pawnee Mesa Addition" has been submitted to and approved by the Wichita-Sedgwick County Metropolitan Area Planning Commission, Wichita, Kansas.

Dated this 31st day of JANUARY, 1980.

Wichita-Sedgwick County Metropolitan Area Planning Commission

Michael I. Sawna Chairman
MICHAEL I. SAWNA

Robert A. Lakin Secretary
ROBERT A. LAKIN

This plat approved and all dedications shown hereon, if any, accepted by the City Commission of the City of Wichita, Kansas this 17th day of MARCH, 1980.

Tony Casado Mayor
TONY CASADO

Donald C. Gissick City Clerk
DONALD C. GISSICK

Entered on transfer record this 25th day of APRIL, 1980.

Susan K. White County Clerk
SUSAN K. WHITE

This plat approved and all dedications shown hereon, if any, accepted by the Board of County Commissioners of Sedgwick County, Kansas this 31st day of MARCH, 1980.

Everett Patrick Chairman
EVERETT PATRICK

Donald E. Gregg Commissioner
DONALD E. GREGG

Donna J. White County Clerk
DONNA J. WHITE

Attest: *Donna J. White* County Clerk
DONNA J. WHITE

State of Kansas, ss: #482954
County of Sedgwick,

This is to certify that this instrument was filed for record in the Register of Deeds Office at 2:00 PM on the 25th day of MARCH, 1980.

Bette J. McArt Register of Deeds
BETTE J. MCART

Pat Kettler Deputy
PAT KETTLER

33' Dedication
Complete Access Control

Access Control Except 2 Openings
Access Control Except 3 Openings

SE Corner
W 1/2 SE 1/4
Sec 31, T 27 S, R/W