

SANITARY SEWER LIFT STATION & FORCE MAIN IMPROVEMENTS

to serve
Hickory Creek Estates
CITY OF WICHITA, KANSAS

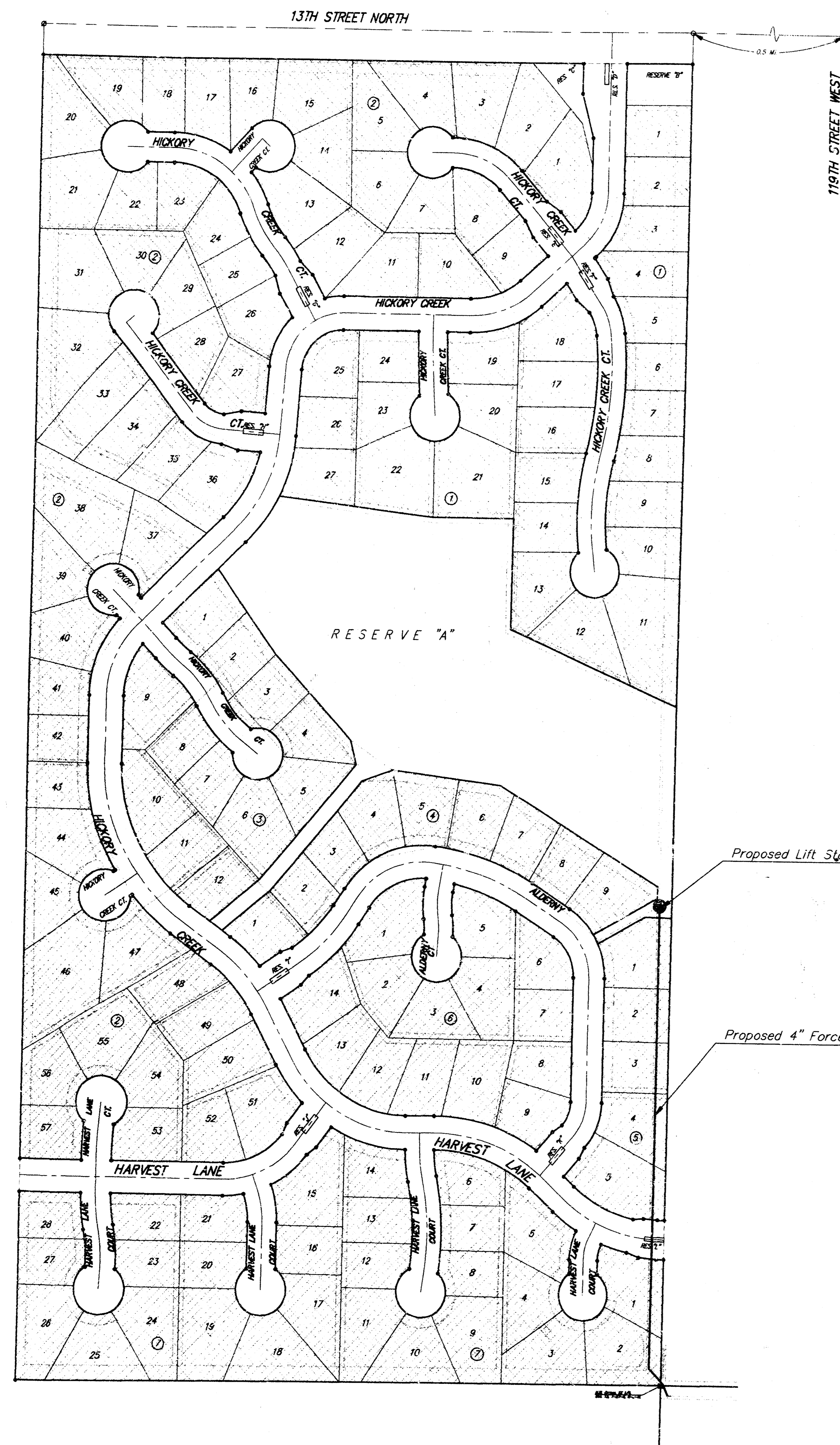
Michael E. Lindebak, P.E. City Engineer

Project Number

468-76-245-82561-000-000-001

Index Code:

742593



Sheet Index

Title Sheet	1
Plan/Profile	2
Lift Station Site Plan	3
Lift Station Detail	4
Manhole Detail	5
Electrical Riser Plan	6
Plat of Hickory Creek Estates	7

GENERAL NOTES:

- Contractor will be required to provide notice to utility companies a minimum of twenty-four (24) hours prior to any excavation, as follows:

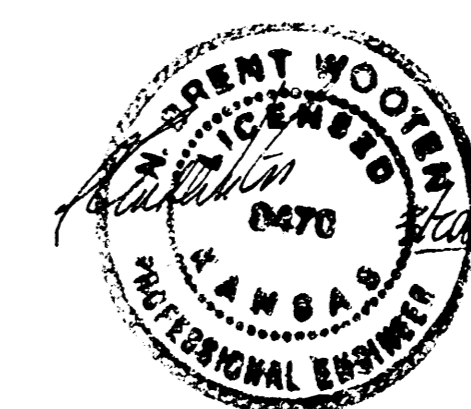
Kansas One-Call	687-2470
-----------------	----------

The Contractor must notify the following in case of an emergency:

Multimedia Cablevision	262-0661
K.P.L. Gas Service Company	383-8650
Kansas Gas & Electric Company	383-8600
Peoples Gas Company	942-8350
Southwestern Bell Telephone Company	1-571-2611
City of Wichita Water Dept.	268-4908
City of Wichita Traffic Engineering	269-4446
- Underground utility service lines and overhead utility pole lines are to be adjusted as necessary by others prior to construction unless the plans specifically call for their adjustment by the Contractor or unless the plans specifically identify a utility to be adjusted by its owner during construction. Existing utilities and their location, as shown on the plans, represent the best information obtainable for design. The Contractor will be required to work around existing utilities within the right-of-way which do not conflict with proposed construction.
- Trees and shrubs in public right-of-way which are in direct conflict with proposed new construction shall be removed by the Contractor with the Engineer's approval. Trees and shrubs which are not in direct conflict with proposed new construction shall be saved and protected from damage.
- The Contractor shall give all property owners and/or tenants of developed property advising the construction of this project a minimum of ten (10) days advance notice prior to start of construction.
- The Contractor shall be responsible for preserving property irons. The Contractor will be required to re-establish any property irons which are damaged or destroyed by his construction operations. Such irons shall be re-established by a licensed land surveyor in accordance with state laws.
- All areas disturbed by construction operations shall be seeded with rye grass at a rate of 300 lbs/acre immediately following construction in that area. Prior to seeding, area shall be prepared per City specs.
- The Contractor shall be responsible for coordination of gas and electrical service to be extended and connected to the lift station site as necessary.
- The lump sum price bid for furnishing and installing lift station and miscellaneous appurtenances complete in place shall include all costs for furnishing and installing the lift station module as indicated on the site plan complete in place and in operation. Such lump sum bid shall include the cost of constructing and/or installing compacted subgrade, concrete p.c., power pole, electrical conduit, electrical wiring, disconnect switch, electrical power supply, natural gas fuel supply, piping, earthwork, compacted fill, finished grading and any other incidentals necessary to complete the work.
- The Contractor Shall Also be Responsible For The Activation and Implementation of the Lift Station to Full Operational Condition as Required for Acceptance By The City of Wichita.
- The Contractor Shall Provide Appropriate Signage For The 4" Force Main as Required By The City of Wichita. Cost of Signage Shall Be Incidental to L.F. 4" Force Main.
- Contractor Shall Coordinate With Construction of Main 18" S.W.I. Sanitary Sewer Improvements, Project Number 468-82560.

Scale: 1" = 150'

Benefit District



BAUGHMAN COMPANY P. A.
ENGINEERING & SURVEYING
316/262-7271 • 315 ELLIS • WICHITA, KANSAS 67211

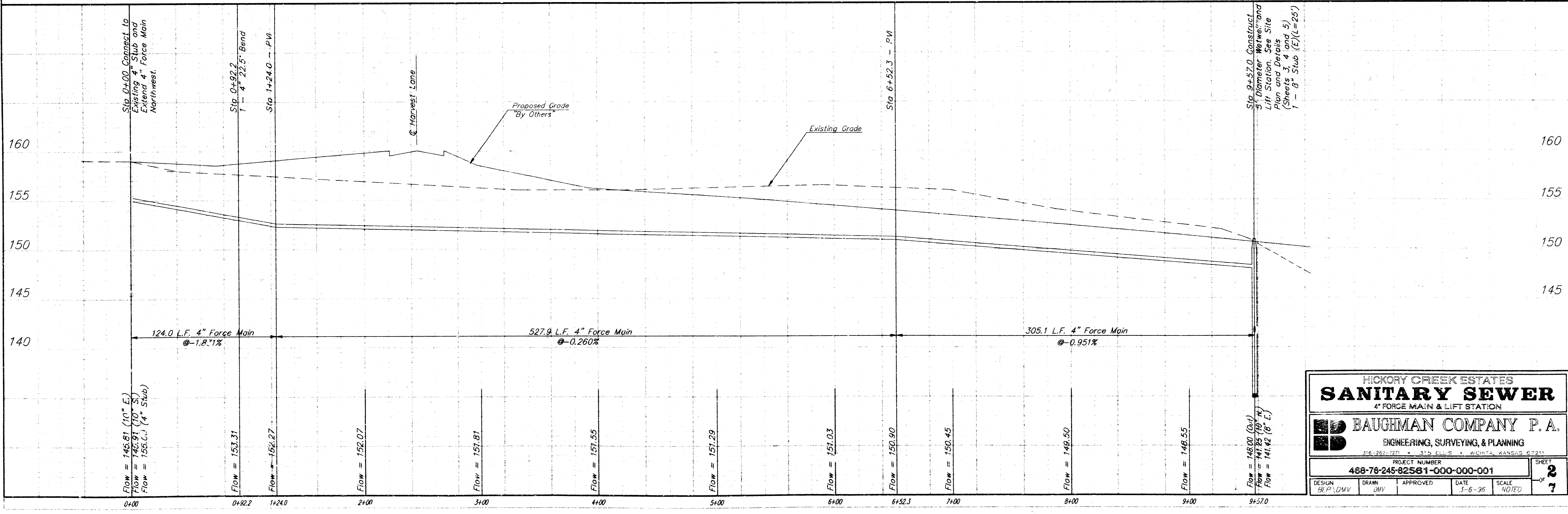
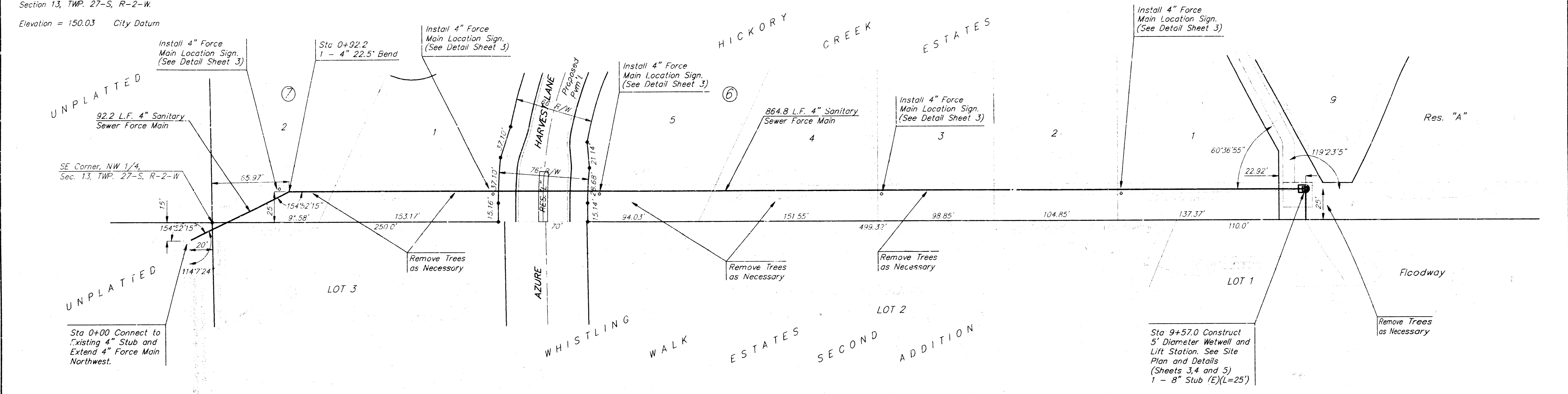
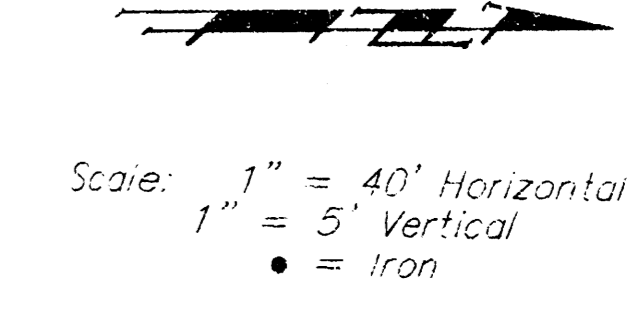
Benchmarks:

Nail in Highline Pole Located 600' West and 31' North of the North 1/4 Corner, Section 13, TWP. 27-S, R-2-W.

Elevation = 153.56 City Datum

Cut on East Cap of North Side of Bridge Located 1,350' East of North 1/4 Corner, Section 13, TWP. 27-S, R-2-W.

Elevation = 150.03 City Datum



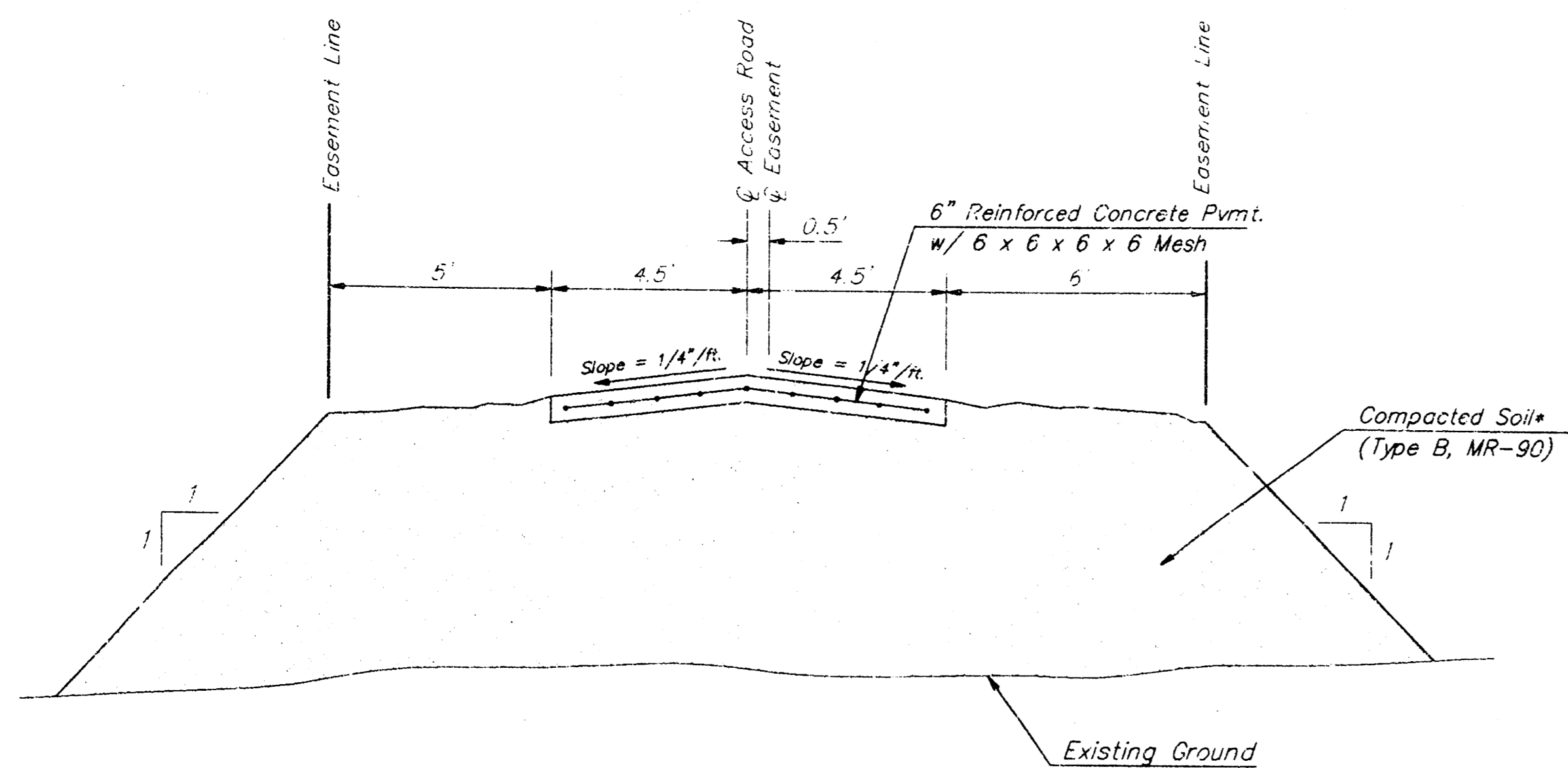
**HICKORY CREEK ESTATES
SANITARY SEWER**
4" FORCE MAIN & LIFT STATION

BAUGHMAN COMPANY P. A.
ENGINEERING, SURVEYING, & PLANNING
316 2612 1711 - 315 E. MAIN ST. - WICHITA, KANSAS 67211

PROJECT NUMBER
468-78-245-82581-000-000-001

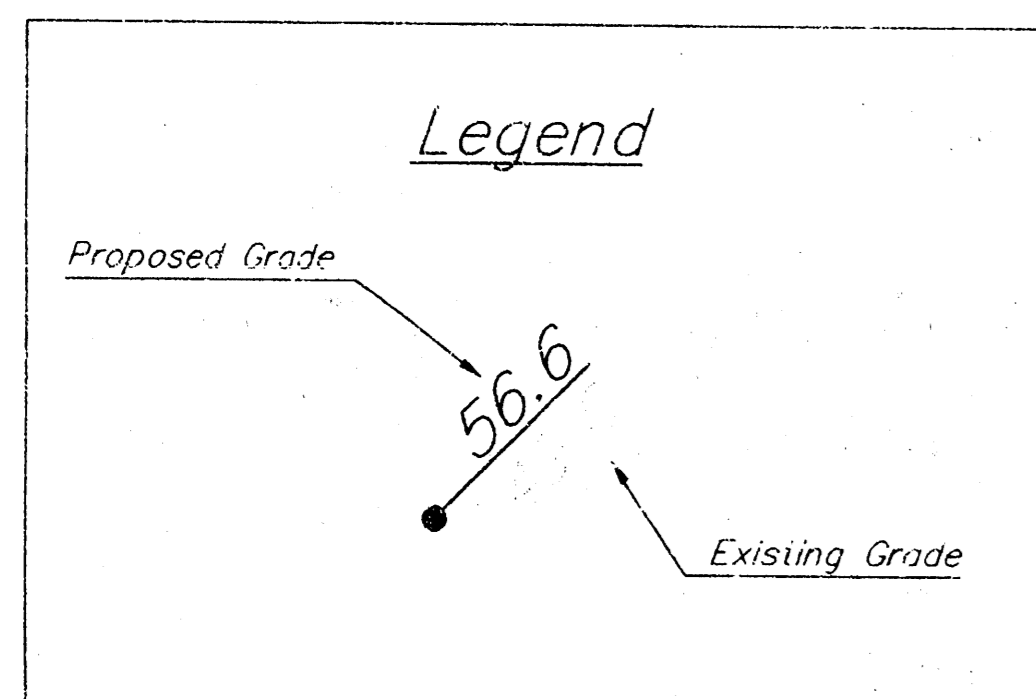
DESIGN H.P./DMV	DRAWN DMV	APPROVED	DATE 3-6-96
			SCALE NOTED

SHEET
2
OF
7



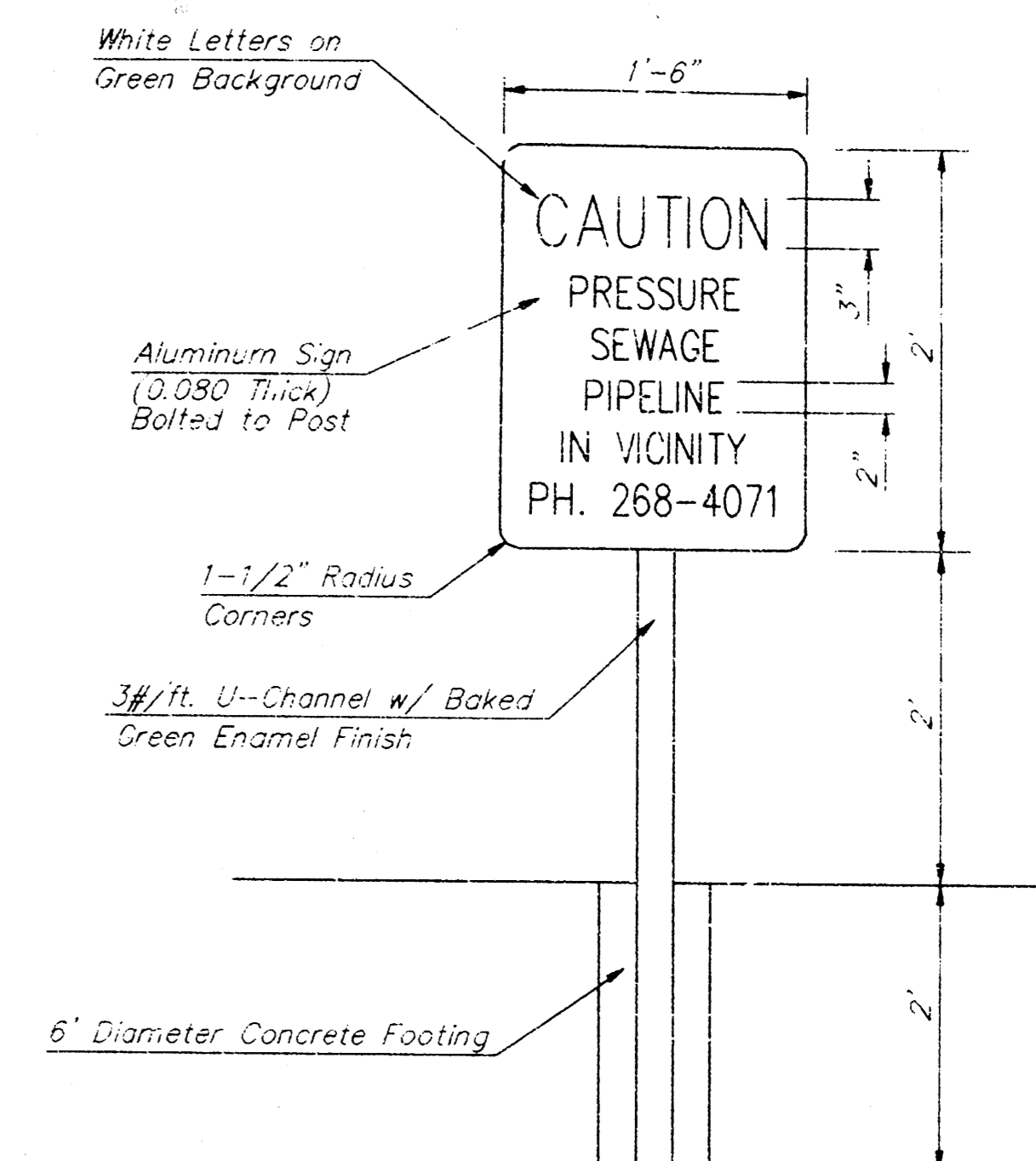
ACCESS ROAD - TYPICAL SECTION
No Scale

Note: All Earthwork and Necessary Fill for Access Road Shall be Included in Bid Item "6" Reinforced Conc. Pvmnt."



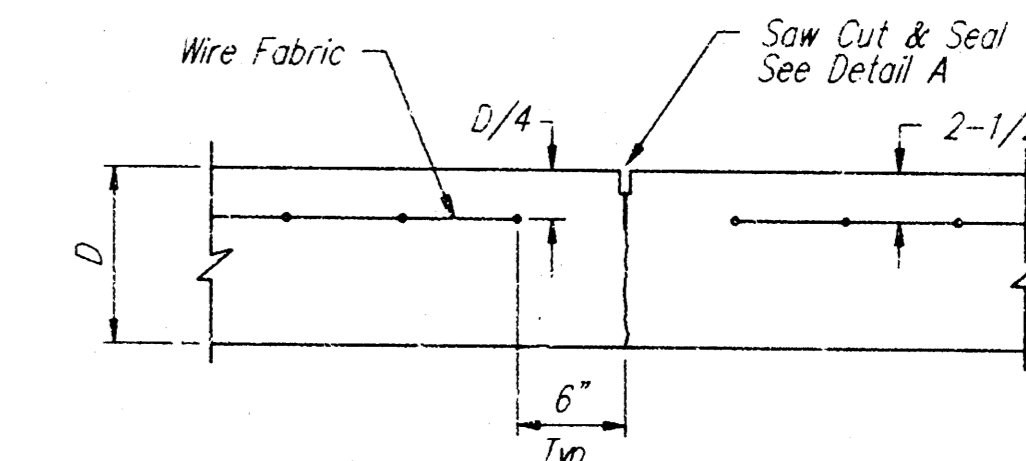
Lift Station Information

	Pump	Flow	TDH	Motor HP	Impeller Dia.	Impeller No.	RPM	Elec. Serv. Req.
No. 1	495-11/12	100 gpm	20'	3	9.60"	1307	1150	208V, 3Ø, 4-Wire
No. 2	495-11/12	100 gpm	20'	3	9.60"	1307	1150	208V, 3Ø, 4-Wire

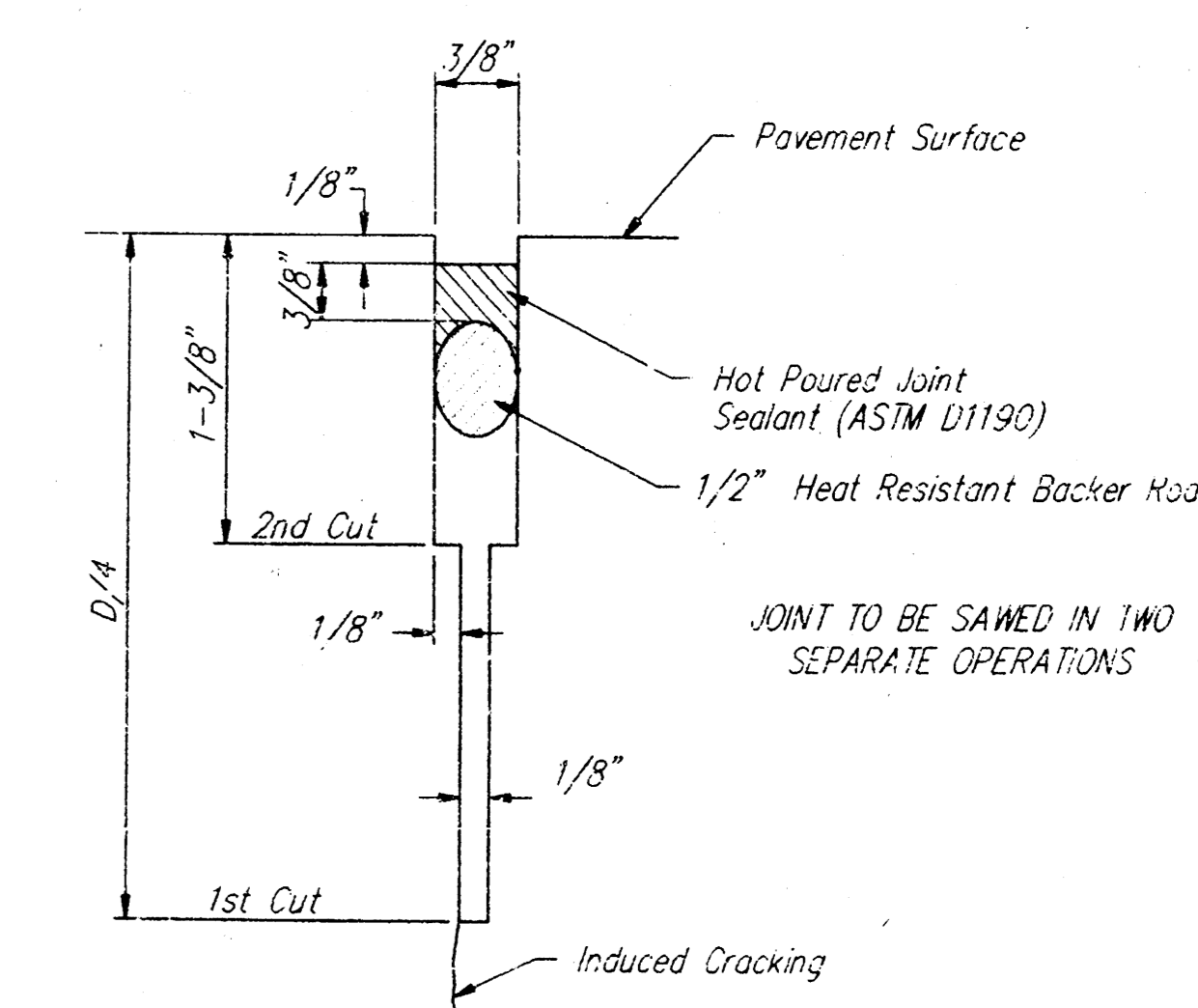


METAL WARNING SIGN DETAIL
No Scale

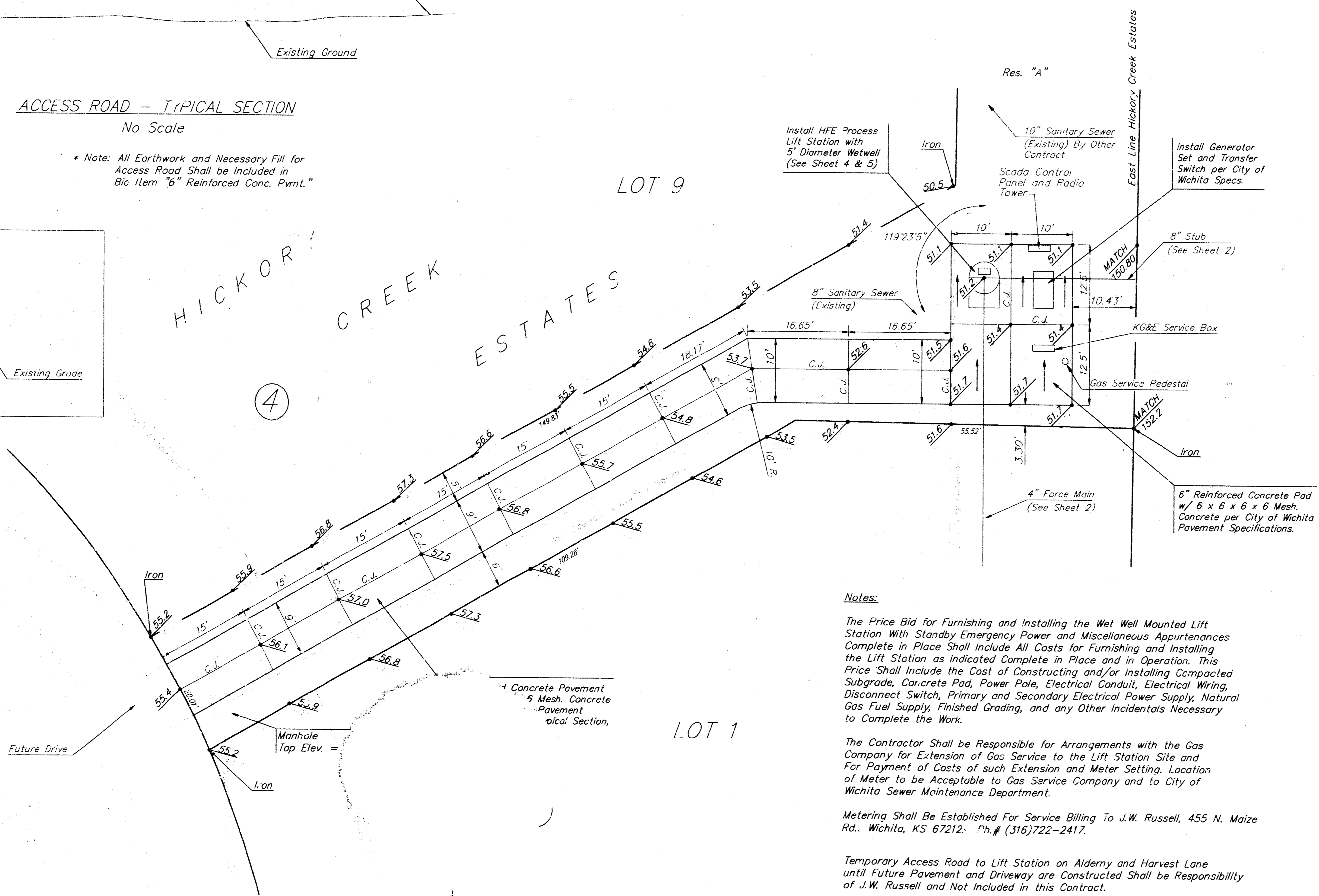
Note: Install Metal Warning Signs at Locations as Shown on the Plans. Exact Location of Warning Signs shall be as Approved by the Engineer. Cost of Warning Signs shall be Incidental to L.F. "4" Sanitary Sewer Force Main.



CONTRACTION JOINT DETAIL (C.J.)
No Scale



SAW JOINT DETAIL "A"
No Scale



Notes:
The Price Bid for Furnishing and Installing the Wet Well Mounted Lift Station With Standby Emergency Power and Miscellaneous Appurtenances Complete in Place Shall Include All Costs for Furnishing and Installing the Lift Station as Indicated Complete in Place and in Operation. This Price Shall Include the Cost of Constructing and/or Installing Compacted Subgrade, Concrete Pad, Power Pole, Electrical Conduit, Electrical Wiring, Disconnect Switch, Primary and Secondary Electrical Power Supply, Natural Gas Fuel Supply, Finished Grading, and any Other Incidentals Necessary to Complete the Work.
The Contractor Shall be Responsible for Arrangements with the Gas Company for Extension of Gas Service to the Lift Station Site and For Payment of Costs of such Extension and Meter Setting. Location of Meter to be Acceptable to Gas Service Company and to City of Wichita Sewer Maintenance Department.
Metering Shall be Established For Service Billing To J.W. Russell, 455 N. Maize Rd., Wichita, KS 67212. Ph.# (316)722-2417.
Temporary Access Road to Lift Station on Aldery and Harvest Lane until Future Pavement and Driveway are Constructed Shall be Responsibility of J.W. Russell and Not Included in this Contract.

HICKORY CREEK ESTATES LIFT STATION
Scale: 1" = 10'

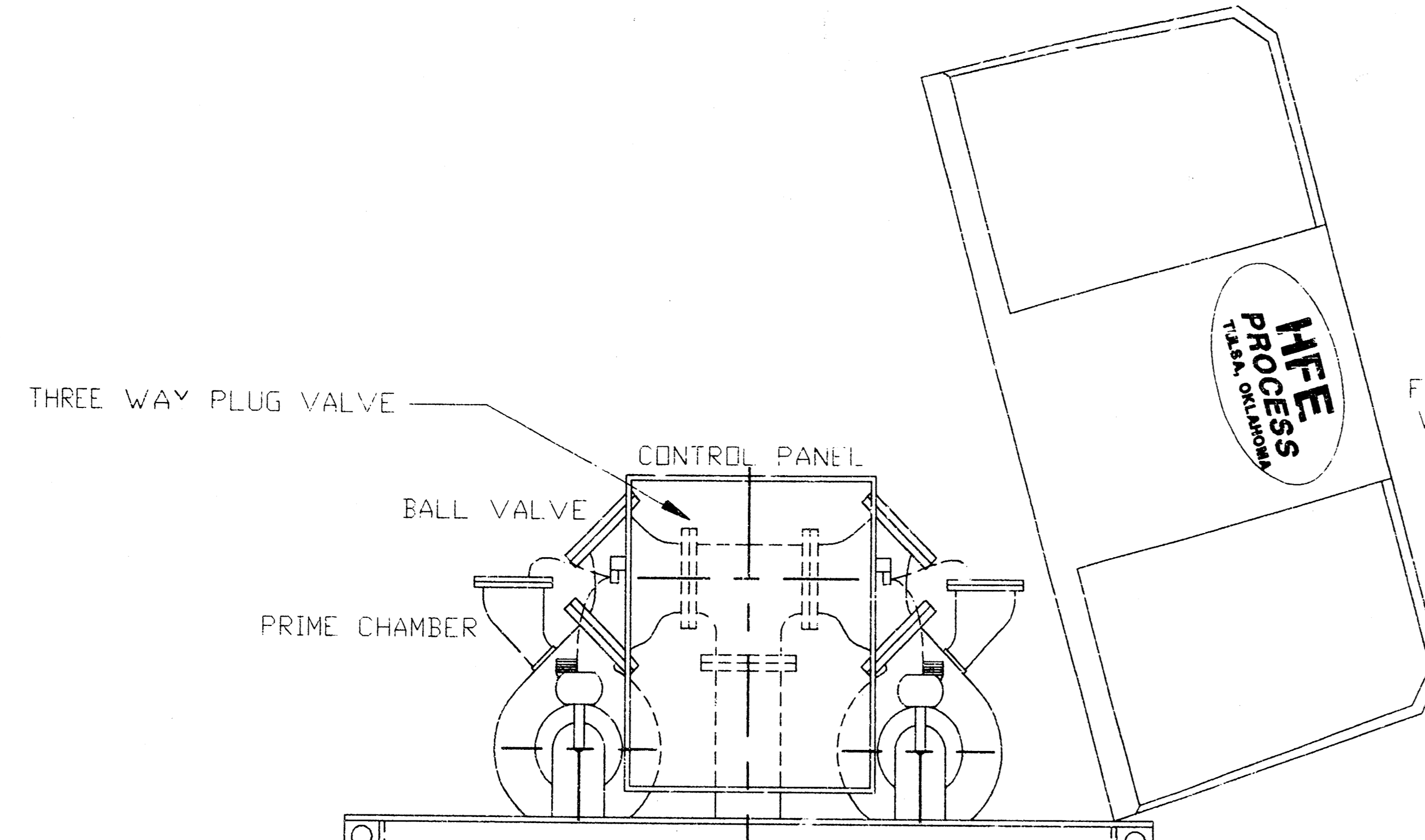
HICKORY CREEK ESTATES
SITE PLAN
SANITARY SEWER FORCE MAIN

BAUGHMAN COMPANY P.A.
ENGINEERING, SURVEYING, & PLANNING
316-262-7221 • 315 ELLIS • WICHITA, KANSAS 67211

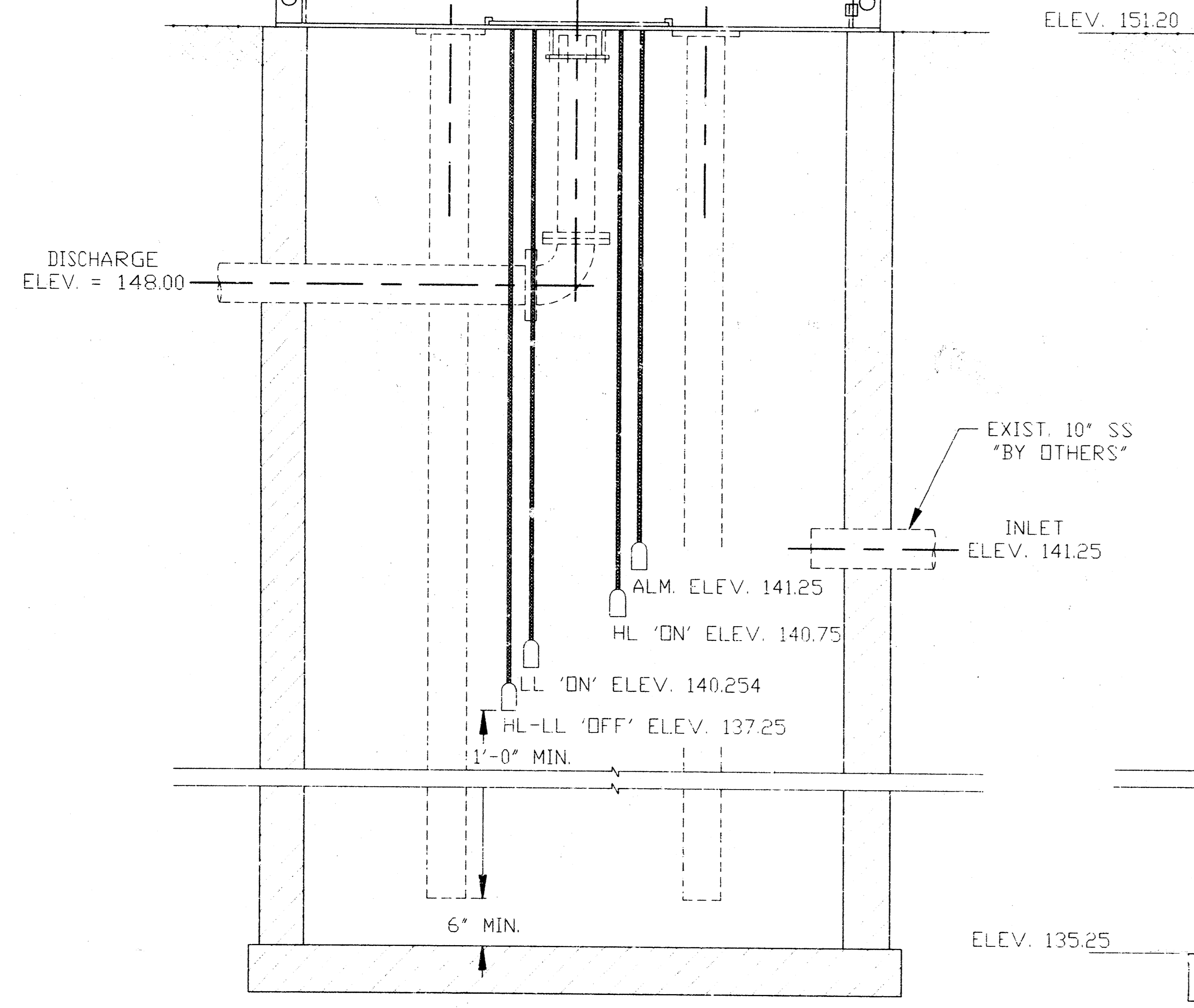
PROJECT NUMBER
488-76-245-82581-000-000-001

DESIGN: BLP/DMV DRAWN: DMV APPROVED: DATE: 3-6-96 SCALE: NOTED

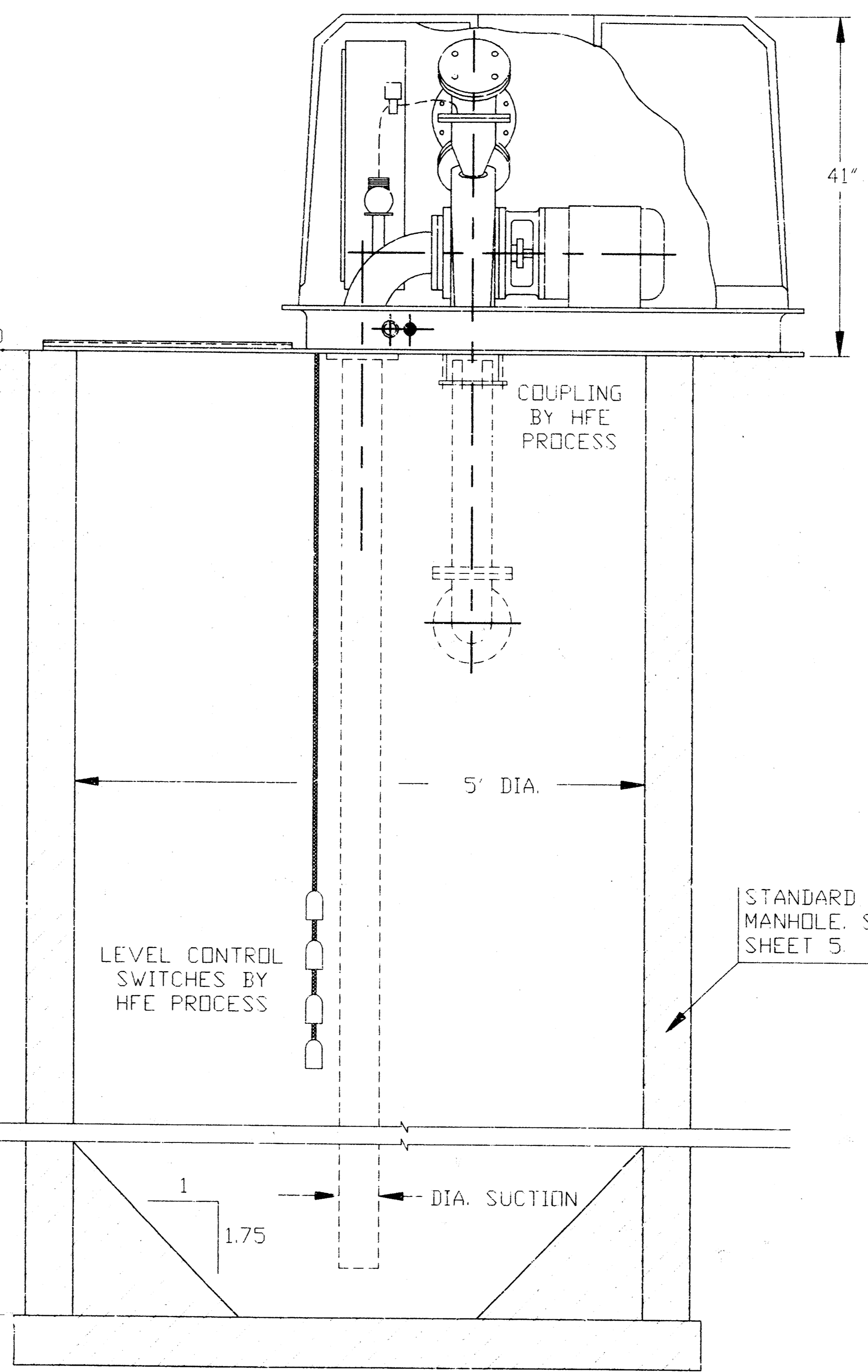
SHEET **3** OF **8**



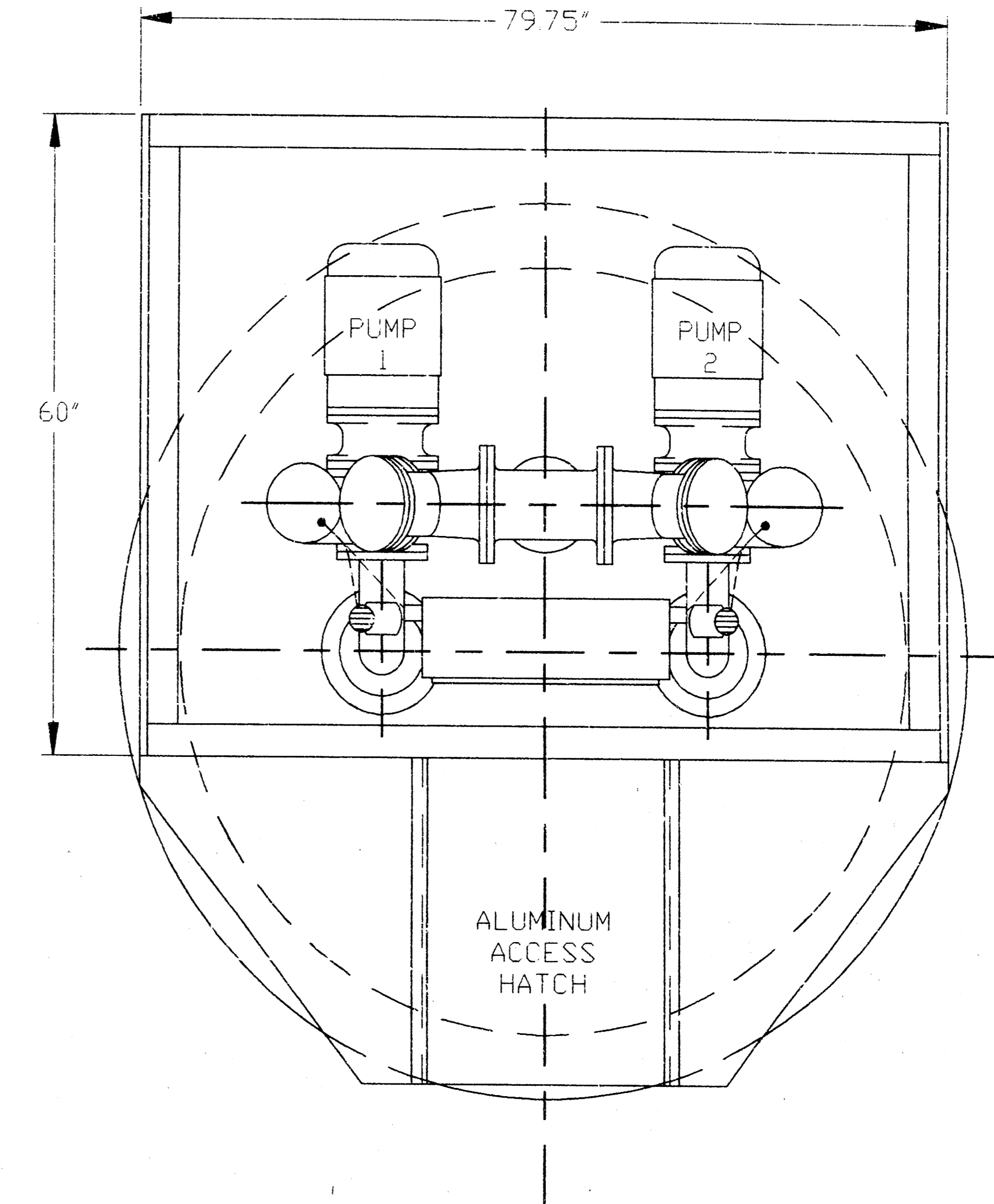
FIBERGLASS COVER
W/ VENT BLOWER



FRONT ELEVATION



SIDE ELEVATION



PLAN VIEW

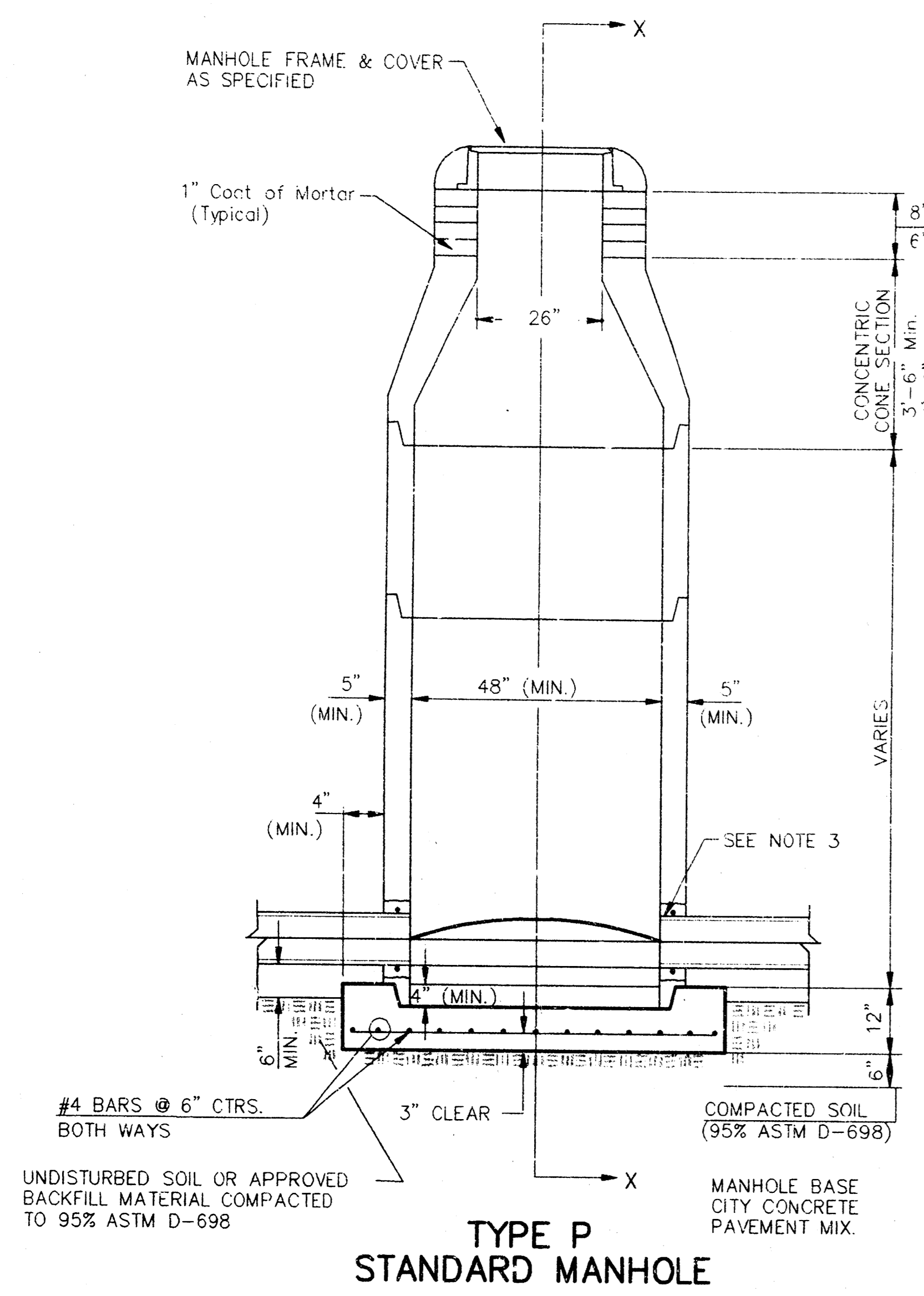
NOTES: 500 WATT HEATER - STD.
250 CFM VENT FAN - STD.
2" & .75" SERVICE CONN.

HFE PROCESS
7925 EAST 40TH STREET
TULSA, OKLAHOMA 74145
(918) 663-9083

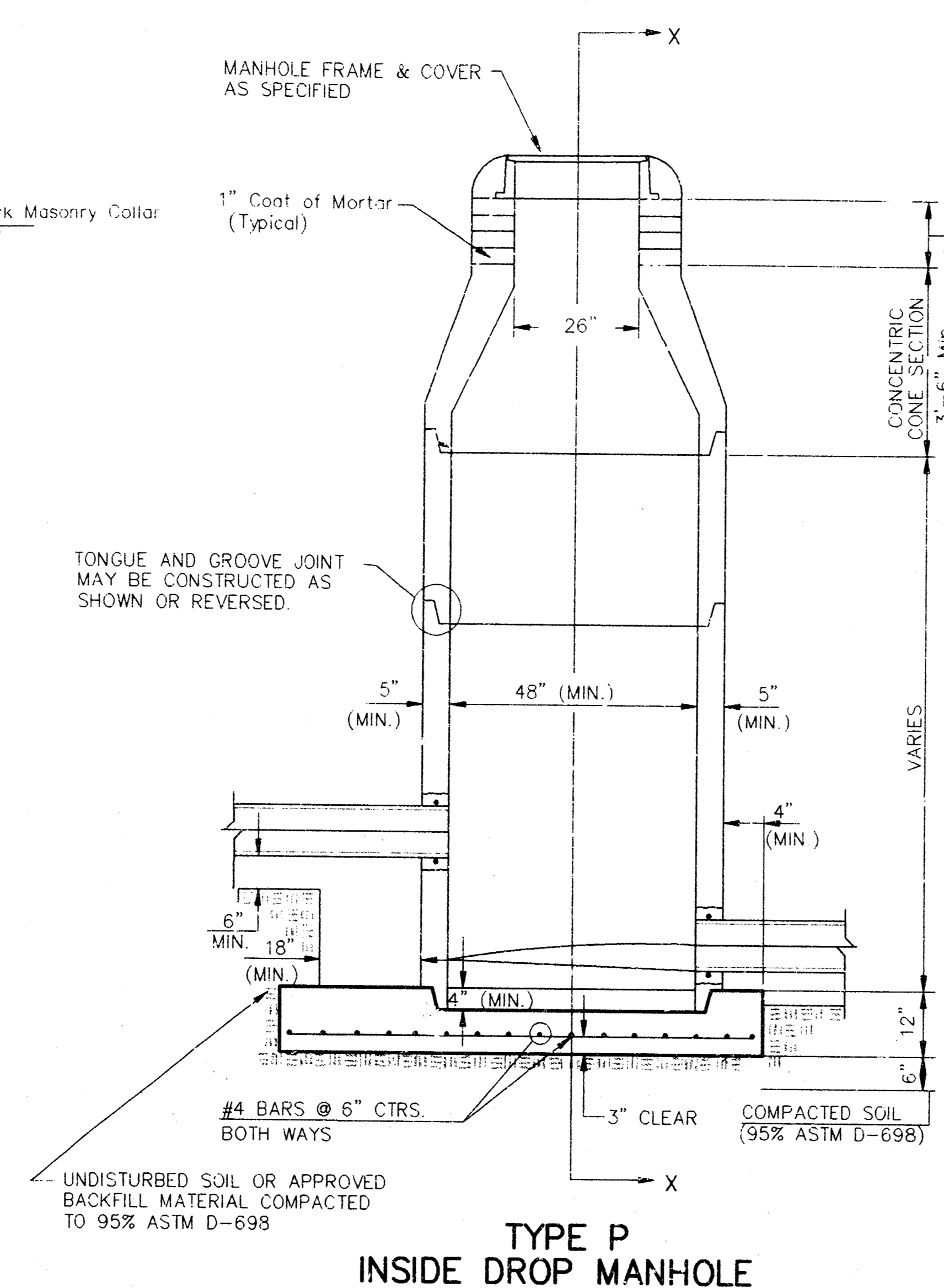


NO.	DATE	REVISION	BY	APPD.

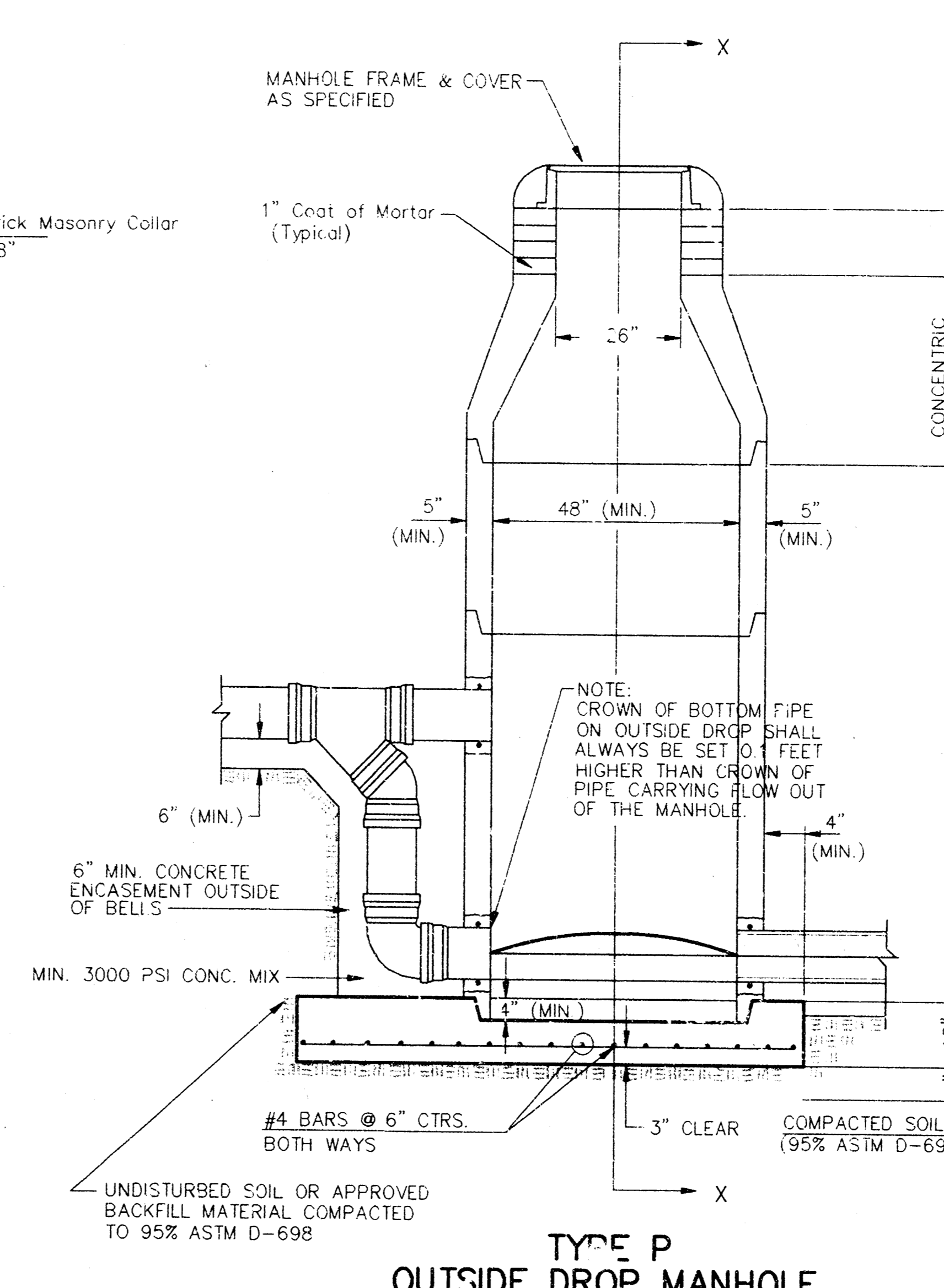
SEWER APPURTENANCES DETAILS



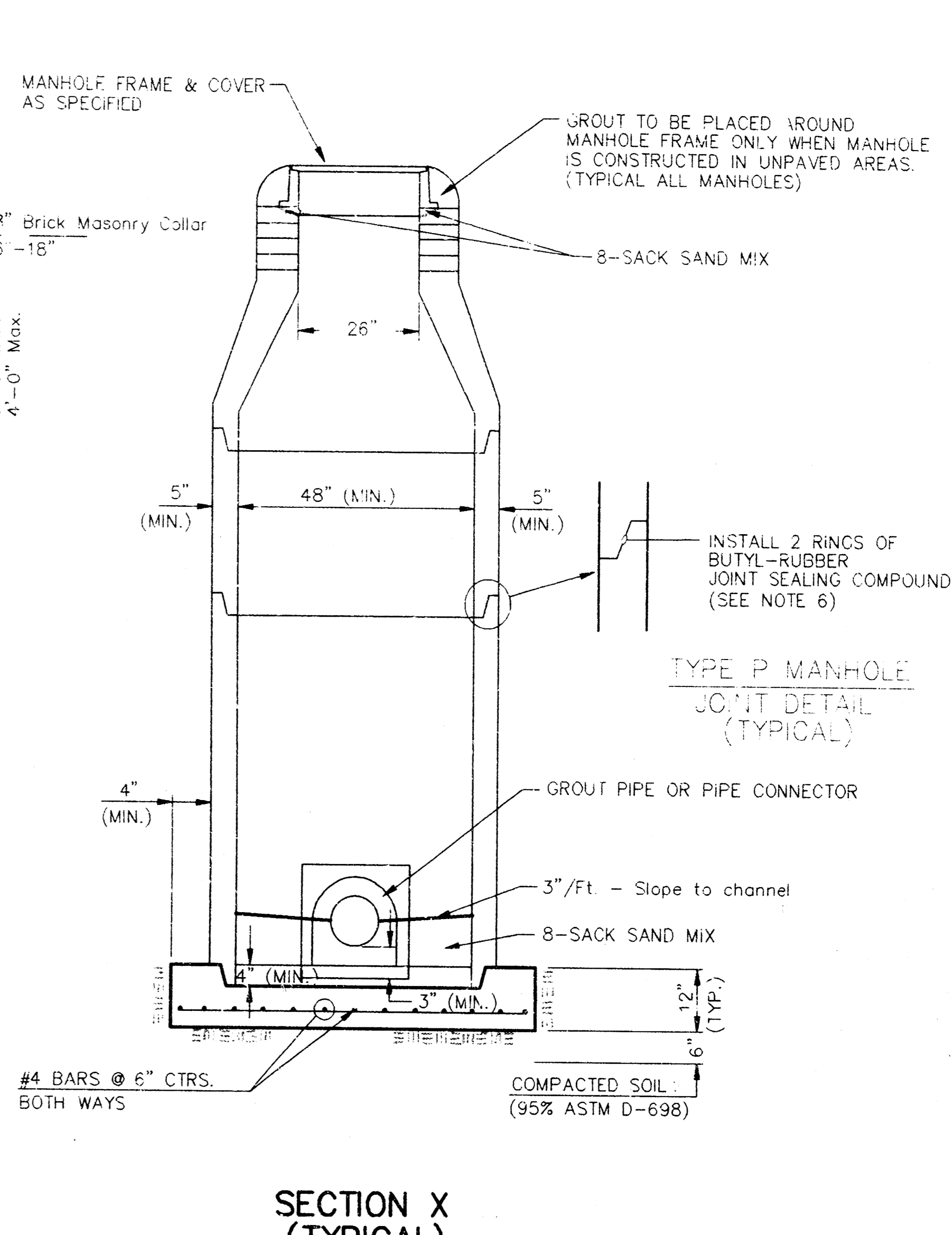
TYPE P STANDARD MANHOLE



TYPE P INSIDE DROP MANHOLE



TYPE P OUTSIDE DROP MANHOLE



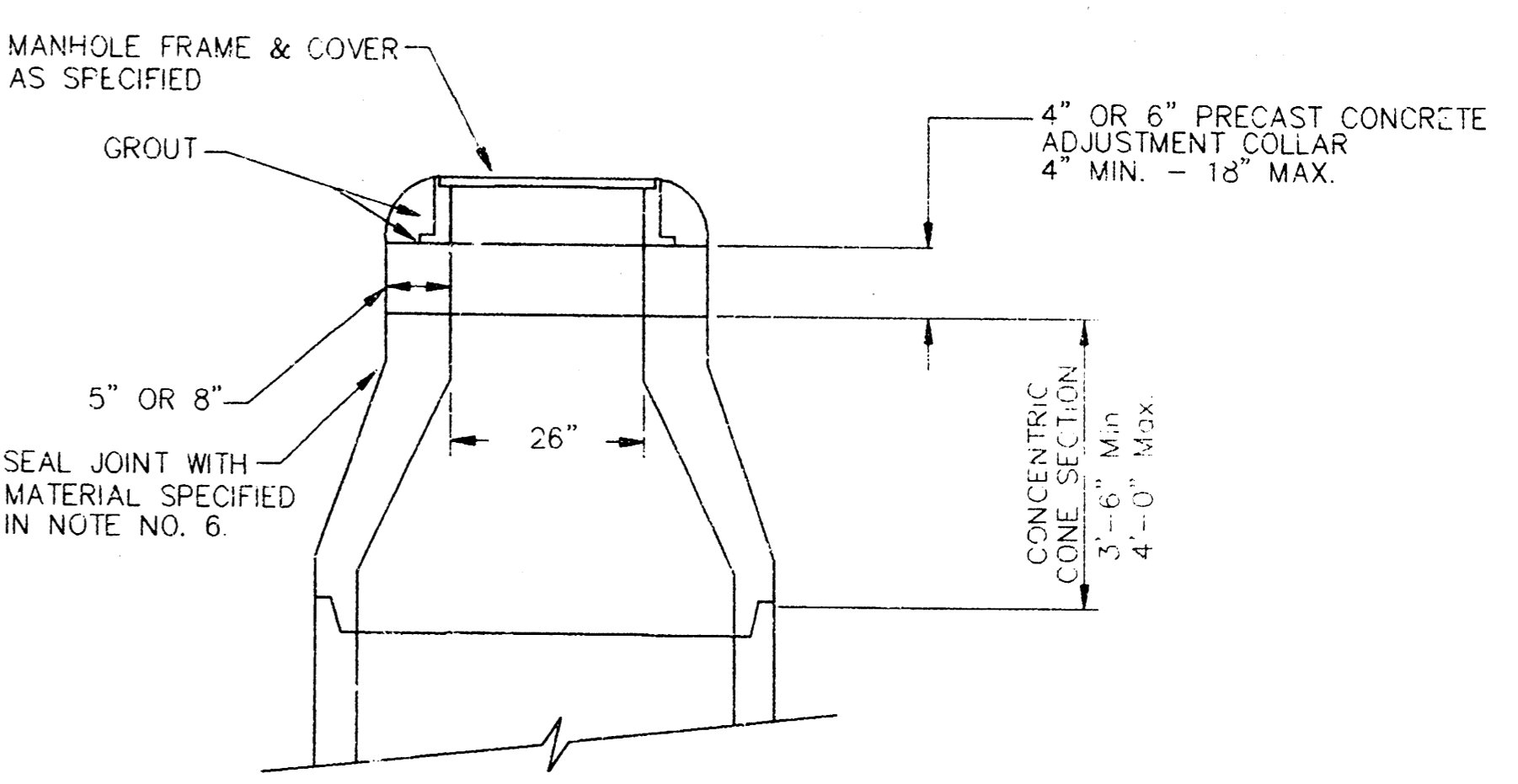
SECTION X (TYPICAL)

GENERAL NOTES
PRECAST MANHOLE NOTES

- ALL PRECAST CONCRETE MANHOLE SECTIONS SHALL CONFORM TO THE LATEST REVISIONS OF A.S.T.M. C478 AS MODIFIED BY THE SPECIFICATIONS.
- NON-SHRINK GROUT SHALL BE NON-METALLIC TYPE.
- APPROVED FLEXIBLE WATERSTOP GASKETS SHALL BE INSTALLED TO JOIN THE SEWER TO THE MANHOLE WALL WHEN A.B.S. COMPOSITE PIPE OR P.V.C. PIPE IS USED. FOR OTHER TYPES OF PIPE THE SEWER SHALL BE GROUTED IN PLACE WITH NON-SHRINK GROUT. THE SEWER PIPE SHALL BE SUPPORTED WITH CONCRETE ENCASEMENT A MINIMUM OF 3 FEET FROM THE MANHOLE WALL AND TO THE FIRST JOINT FOR V.C.P. SUCH THAT THE JOINT REMAINS FLEXIBLE.
- ALL INSIDE SURFACES OF THE CONCRETE MANHOLE WHICH WOULD BE EXPOSED TO SEWER GAS SHALL BE COATED WITH 2 COATS TNEC SERIES 66 HI-BUILD EPOXYLINE, DRY THICKNESS OF 8 MILS (MIN.)
- EXTERIOR MANHOLE WALLS SHALL BE COATED WITH 1 COAT MOBILARMA 633 BITUMINOUS COATING.
- JOINT SEALING COMPOUND SHALL BE KENT SEAL NO. 2 OR APPROVED EQUAL.
- PRECAST MANHOLES SHALL BE SET AT LEAST 4 INCHES INTO THE MANHOLE BASE.
- TOP OF MANHOLE FLOOR SLAB SHALL BE AT LEAST 3 INCHES BELOW THE FLOW LINE OF THE OUTLET PIPE TO INSURE SUFFICIENT MINIMUM THICKNESS OF SHAPED INVERT.
- LIFTING HOLES SHALL BE FILLED WITH NON-SHRINK GROUT AND THE INTERIOR SURFACE COATED AS SPECIFIED.
- MORTAR USED IN MASONRY CONSTRUCTION SHALL CONTAIN 8 SACKS OF CEMENT PER CUBIC YARD. CONCRETE USED IN MANHOLE BASES SHALL CONFORM TO THE REQUIREMENTS OF CONCRETE FOR CONCRETE PAVEMENT CONSTRUCTION AS SPECIFIED IN THE CITY STANDARD PAVING SPECIFICATIONS USING CITY CONCRETE PAVEMENT MIX WITHOUT AIR ENTRAINING ADMIXTURE. MORTAR SHALL BE PLACED AROUND THE MANHOLE RING AS SHOWN ON THE DRAWINGS WHEN MANHOLES ARE CONSTRUCTED IN UNPAVED AREAS. MANHOLES CONSTRUCTED WHERE PIPE SIZES ARE SMALLER THAN 24" SHALL HAVE AN INSIDE DIAMETER OF 4". MANHOLES CONSTRUCTED WHERE PIPE SIZES ARE 24" OR LARGER SHALL HAVE AN INSIDE DIAMETER OF 5". COMPLETED MANHOLE SHALL BE WITHOUT LEAKS AND WATER TIGHT.

- REINFORCING STEEL SHALL BE INSTALLED IN THE MANHOLE BASES AND SHALL CONSIST OF NO. 4 BARS PLACED ON 6" CENTERS IN BOTH DIRECTIONS. THE MANHOLE BASE REINFORCEMENT SHALL BE PLACED AT LEAST 3" ABOVE THE BOTTOM OF THE MANHOLE BASE. ALL COSTS FOR FURNISHING AND INSTALLING REINFORCING STEEL SHALL BE INCLUDED IN THE UNIT PRICE BID FOR THE MANHOLE.
- OPENINGS SHALL BE CUT INTO THE MANHOLE WALL WHEN OUTSIDE DROPS ARE CONSTRUCTED ON EXISTING MANHOLES. SUCH OPENINGS CUT INTO EXISTING MANHOLES SHALL BE AS SMALL AS PRACTICAL TO FACILITATE INSTALLING AND GROUTING THE NEW PIPE IN PLACE. WATERSTOP GASKETS SHALL BE USED WITH P.V.C. AND A.B.S. COMPOSITE PIPE. THE NEW PIPE SHALL BE GROUTED INTO THE OPENING USING AN APPROVED NONSHRINK GROUT FOR THE FULL MANHOLE WALL THICKNESS. THE EXTERIOR OF THE COMPLETED CONNECTION SHALL BE SEALED WITH AN APPROVED BITUMINOUS COATING SUCH THAT THE CONNECTION WILL BE WATER TIGHT. FLOOR OF MANHOLE SHALL BE MODIFIED TO FORM NEW FLOW CHANNEL FOR THE NEW CONNECTION AS INDICATED BY THE DRAWING. THIS WORK, INCLUDING MODIFICATION OF MANHOLE FLOOR, SHALL BE PAID FOR AT THE UNIT PRICE BID FOR OUTSIDE DROP STACK CONSTRUCTED ON EXISTING MANHOLE.
- THE FLOORS OF ALL MANHOLES SHALL BE SHAPED WITH FLOW CHANNELS SUCH THAT THE MANHOLES WILL BE SELF CLEANING AND FREE OF AREAS WHERE SOLIDS COULD BE DEPOSITED AS SEWAGE FLOWS THROUGH THE MANHOLE FROM ALL INLET PIPES TO THE OUTLET PIPE. FLOW CHANNELS SHALL BE FORMED TO MATCH THE BOTTOM HALVES OF THE INFLOWING PIPES AND THE OUTFLOWING PIPE AS SHOWN BY THE DRAWINGS EXCEPT FOR INSIDE DROP MANHOLES. FLOW CHANNELS FOR INSIDE DROP MANHOLES SHALL BE CONSTRUCTED AS INDICATED BY THE DRAWING. MANHOLE FLOORS SHALL HAVE SLOPES OF 3 INCHES PER FOOT IN THE AREAS OUTSIDE OF THE FLOW CHANNELS SLOPED TOWARD THE FLOW CHANNELS. PIPES LAID THROUGH MANHOLES SHALL HAVE THE TOP HALF REMOVED TO NEAT LINES FOR THE FULL INSIDE DIAMETER OF THE MANHOLE. MANHOLE FLOORS SHALL THEN BE SHAPED AROUND THE BOTTOM HALF OF THE PIPE WHICH FORMS THE FLOW CHANNEL.
- PIPES INSTALLED WITHIN THE EXCAVATION MADE FOR THE MANHOLE SHALL BE CRADLED WITH CONCRETE TO THE LIMITS OF THE MANHOLE EXCAVATION. WHEN CLAY PIPE IS USED, THE CRADLE SHALL EXTEND TO THE FIRST JOINT OUTSIDE THE MANHOLE. THE CRADLE SHALL BE TERMINATED AT THE CLAY PIPE JOINT IN A MANNER WHICH WILL MAINTAIN THE FLEXIBILITY OF THE JOINT. COST OF CRADLE WITHIN MANHOLE EXCAVATION OR TO CLAY PIPE JOINTS ADJACENT TO MANHOLE SHALL BE INCLUDED IN THE UNIT PRICE BID FOR THE MANHOLE.

- MANHOLE COVER CASTINGS AND MANHOLE FRAME CASTINGS SHALL CONFORM TO THE REQUIREMENTS AS INDICATED IN THE STANDARD SPECIFICATIONS AND AS SHOWN IN THE STANDARD DETAIL DRAWING.
- THE VERTICAL DROP IN INSIDE DROP MANHOLES SHALL NOT EXCEED 2' FOR INFLOWING PIPES SIZED 12" OR SMALLER AND 2' FOR INFLOWING PIPES LARGER THAN 12". THE CROWNS OF INFLOWING PIPES SHALL NEVER BE SET LOWER THAN THE CROWN OF THE OUTFLOWING PIPE.
- STANDARD MANHOLES AND STANDARD INSIDE DROP MANHOLES SHALL BE BID AS STANDARD MANHOLES FOR THE TYPE AND DIAMETER INDICATED. OUTSIDE DROP MANHOLES SHALL BE BID AS STANDARD OUTSIDE DROP MANHOLES FOR THE TYPE AND DIAMETER INDICATED. ALL MANHOLE DIAMETERS WILL BE 4' UNLESS INDICATED OTHERWISE.
- A BRICK MASONRY COLLAR SHALL BE INSTALLED BETWEEN THE CAST IRON FRAME AND THE CONCENTRIC CONE. THE COLLAR WILL HAVE 8" WALLS AND A VERTICAL HEIGHT OF 6" MINIMUM AND 18" MAXIMUM. A 1" COAT OF MORTAR WILL BE PLASTERED ON THE OUTSIDE OF THE COLLAR. THE USE OF PRE-CAST CONCRETE SPACERS FOR MANHOLE TOP ADJUSTMENT IS ALSO ALLOWED.



ALTERNATE CONSTRUCTION IN UNPAVED AREAS

CITY OF WICHITA

STD. MANHOLE DETAILS
& SEWER APPURTENANCES DETAILS

BAUGHMAN COMPANY P. A.
ENGINEERING, SURVEYING, & PLANNING

316-262-7271 • 316-262-7272 • WICHITA, KANSAS 67211

PROJECT NUMBER: 488-78-245-82581-000-000-001

SHEET 5 OF 7

DESIGN: [] DRAWN: [] APPROVED: [] DATE: [] SCALE: []

SYMBOL		DESCRIPTION
1	(Symbol)	NEW LIFT STATION CONTROL PANEL. TO INCLUDE THE FOLLOWING BREAKERS: (1) 150 FOR PUMPS (2) 200 FOR GENERATOR BATTERY CHARGER (3) 200 FOR JACKET WATER HEATER (4) 200 FOR SCADA CONTROL PANEL PROVIDE ALL WIRING AND CONNECTIONS PER MANUFACTURERS REQUIREMENTS. PROVIDE COMPLETE UNIT PER CITY OF NICHITA SPECIFICATIONS AND REQUIREMENTS.
2	(Symbol)	NEW AUTOMATIC TRANSFER SWITCH, 100 AMP, 3 POLE, 200 VOLT, 3 PHASE WITH SOLID NEUTRAL AND GROUND BAR. PROVIDE WITH AUTOMATIC WEEKLY EXERCISER. PROVIDE COMPLETE UNIT PER CITY OF NICHITA SPECIFICATIONS AND REQUIREMENTS.
3	(Symbol)	NEW EMERGENCY GENERATOR, NATURAL GAS, 30 KW, 120/208 VOLT, 3 PHASE, 4 WIRE PLUS GROUND WITH AUTO START, WEATHERPROOF ENCLOSURE AND ALL ASSOCIATED EQUIPMENT TO PROVIDE AUTOMATIC EMERGENCY BACKUP POWER. PROVIDE COMPLETE UNIT PER CITY OF NICHITA SPECIFICATIONS AND REQUIREMENTS.
4	(Symbol)	NEW SCADA (SITE CONTROL AND DATA ACQUISITION) SYSTEM. PROVIDE COMPLETE SYSTEM WITH CONTROL PANEL, ANTENNAE, TOWER AND RADIO TRANSMITTER. PROVIDE WIRING AND CONNECTION OF ALL REQUIRED POINTS TO GIVE A COMPLETE AND FUNCTIONAL SYSTEM. PROVIDE COMPLETE UNIT PER CITY OF NICHITA SPECIFICATIONS AND REQUIREMENTS.

FEEDER IDENT.	CONDUCTORS		GROUND SIZE	ISOLATED PER SET	CONDUIT SIZE
	SETS	QUANT. PER SET			
1	1	2 #12	#12		3/4"
2	1	4 #2	#6		1 1/2"
3	1	4 #2	#6		3"
4	1	3 #12	#12		3/4"
5	1	3 #12	#12		3/4"
6	1	3 #12	#12		3/4"

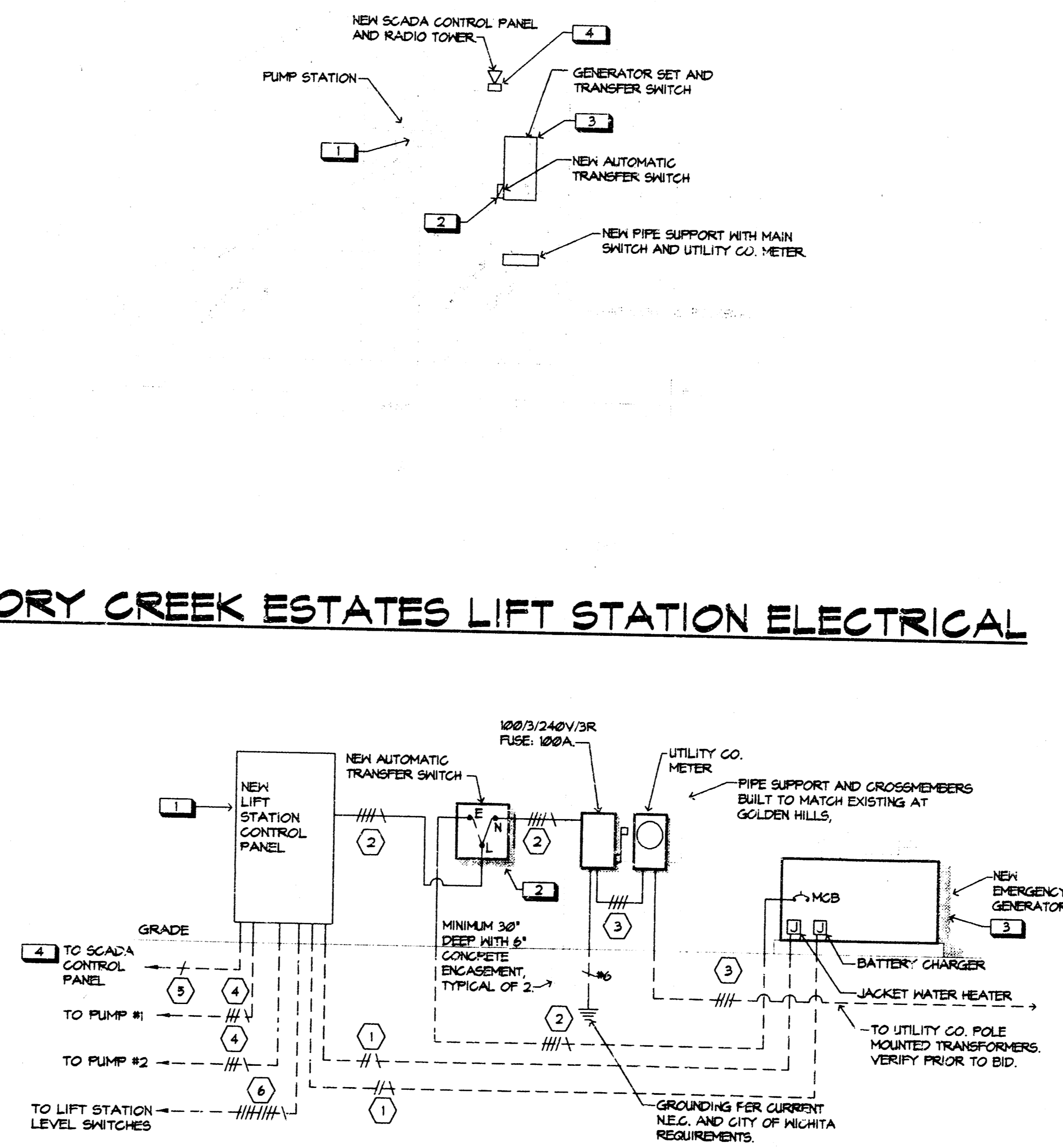
① WIRING AS REQUIRED FOR ALL ALARM CONDITIONS AND TIE-INS PLUS 20% SPARES. VERIFY WITH MANUFACTURERS AND OWNER PRIOR TO BID.

SYMBOL	DESCRIPTION	MOUNTING
(Symbol)	FLUORESCENT FIXTURE & FIXTURE LETTER	CEILING
(Symbol)	FLUORESCENT FIXTURE & FIXTURE LETTER	CEILING
(Symbol)	INCAND. OR H.I.D. FIXTURE & FIXTURE LETTER	SURF/RECESS
(Symbol)	INCAND. OR H.I.D. FIXTURE & FIXTURE LETTER	HALLBRACK
(Symbol)	EXIT FIXT. - SHADING DENOTES FACE(S)	CEIL./WALL
(Symbol)	GFCI DUPLEX GROUNDED RECEPTACLE	1'-3" AFF
(Symbol)	DUPLEX GROUNDED RECEPTACLE	1'-3" AFF
(Symbol)	EXTERIOR GFCI RECEPT. WEATHERPROOF	1'-3" AFF
(Symbol)	SPECIAL OUTLET, SEE SCHEDULE OR AS NOTED	
(Symbol)	TELEPHONE OUTLET (P+PAT, 48"X1/2"X48")	1'-3" AFF
(Symbol)	SWITCHES (1-POLE/3-WAY/4-WAY/PILOTKEY)	4'-0" TO TOP
(Symbol)	JUNCTION BOX	
(Symbol)	FUSTAT	
(Symbol)	SPECIAL DEVICE AS NOTED ON PLAN	
(Symbol)	BRANCH CIRCUIT PANEL & PANEL DESIG.	6'-6" TO TOP
(Symbol)	H.D. SAFETY SWITCH (AMPS/POLE/VOLTAGE)	6'-6" TO TOP
(Symbol)	STARTER (SIZE/POLE/VOL-TAGE)	6'-6" TO TOP
(Symbol)	THERMOSTAT (BY M.C.)	4'-0" TO TOP
(Symbol)	MOTOR	
(Symbol)	CONDUIT RUN 2 #12 & #12 GRD.-1/2"	CEIL./WALL
(Symbol)	CONDUIT RUN 2 CIRCUIT #12 & #12 GRD.-1/2"	EARTH/FLOOR
(Symbol)	PARTIAL HOMERUN (MULTIPLE LOAD LOCATIONS)	
(Symbol)	SEE NOTE #1	
(Symbol)	FEEDER IDENTIFICATION, SEE SCHEDULE	
(Symbol)	WEATHERPROOF	
(Symbol)	INDICATES SWITCHING SCHEME	

GENERAL NOTES	
1.	VERIFY ALL OUTLET LOCATIONS ON THE JOB PRIOR TO ROUGH-IN.
2.	REFER TO RELATED ARCHITECTURAL, MECHANICAL, AND STRUCTURAL DRAWINGS FOR RELATED INFORMATION.
3.	REFER TO THE SPECIFICATIONS FOR DATA NOT ON THE DRAWINGS.
4.	COORDINATE OUTLET BOX LOCATIONS WITH MASONRY TO MINIMIZE CUTTING OF BRICK OR BLOCK.
5.	ALL MOUNTING HEIGHTS TO BOTTOM OF ITEM UNLESS OTHERWISE NOTED.
6.	E.C. SHALL REFER TO MECHANICAL DRAWINGS AND SPECIFICATIONS FOR THE REQUIREMENTS ASSOCIATED WITH WIRING AND CONNECTION OF INTERLOCKING AND CONTROLS OF MECHANICAL UNITS AND THERMOSTAT LOCATIONS.
7.	CONDUIT RUN W/CONDUCTORS AS INDICATED, CONDUIT SIZE AS REQUIRED. CONDUIT RUN TO PANEL DEVICE SIZE AS INDICATED (AMP/POLE). CIRCUIT WITHOUT INDICATION IS ROUTED TO 200A F. BREAKER.
8.	A GROUND CONDUCTOR SIZED PER N.E.C. ARTICLE 250 IS REQUIRED IN ALL POWER, RECEPTACLE, AND LIGHTING CIRCUITS. GROUND CONDUCTORS ARE NOT SHOWN ON DRAWINGS.

HICKORY CREEK ESTATES LIFT STATION ELECTRICAL

Scale: 1" = 10'



HICKORY CREEK LIFT STATION ELECTRICAL RISER DIAGRAM

NOT TO SCALE
 NOTES: 1. VERIFY ALL PRIMARY AND SECONDARY ELECTRICAL SERVICE ENTRANCE REQUIREMENTS WITH LOCAL UTILITY CO. CODES AND ORDINANCES PRIOR TO BID.
 VOLTAGE: 277/480V 3Ø 4 WIRE

Signature
 2-13-96

S Stefan, P Argenti & Associates, Inc.
 Electrical Engineering and Design
 626 N. Broadway, Suite B
 Wichita, KS 67214-3597
 (316) 264-7051
 FAX: (316) 264-3542

HICKORY CREEK RISER AND SITE PLAN

BAUGHMAN COMPANY P.A.
 ENGINEERING, SURVEYING, & PLANNING
 518-282-7221 • 319 ELLIS • WICHITA, KANSAS 67211

PROJECT NUMBER: _____ SHEET: **E1**

DESIGN: SVA DRAWN: SVA APPROVED: _____ DATE: _____ SCALE: 1"=10'-0" OF: **7**

HICKORY CREEK GARDEN HOMES
WICHITA, SEDGWICK COUNTY, KANSAS

State of Kansas) SS 103 Baughman Company, P.A., Surveyors in
Sedgwick County) and state do hereby certify that we have surveyed and
platted "HICKORY CREEK ESTABLISHMENTS" Wichita, Sedgwick County, Kansas,
and that the accompanying plat is a true and correct exhibit of the
property surveyed described as follows: The E1/2 of the NW 1/4 of
Sec. 13, Twp. 27-S., R-2-W. of the 6th P.M., Sedgwick County, Kansas.
Existing public easements and dedications being vacated by
virtue of K.S.A. 12-512(b).

Baughman Company, P.A.

Gregory F. Stevens
Surveyor

Know all men by these presents that we, the undersigned, have caused the land described in the certificate to be platted into Lots, Blocks, Passways and Streets to be known as "HICKORY CREEK ESTABLISHMENTS" Wichita, Sedgwick County, Kansas. The utility easements are hereby granted as indicated for the construction and maintenance of all public utilities. The drainage easements are hereby granted as indicated for drainage purposes. The well easements are hereby granted as indicated for the construction and maintenance of private screening wells and utility main lines and service lines are allowed to cross these easements. The drainage and utility easements are hereby granted as indicated for drainage purposes and for the construction and maintenance of all public utilities. The sidewalk and utility easement is hereby granted as indicated for the construction and maintenance of a sidewalk for pedestrian access to and from Reserve "A" and for the construction and maintenance of all public utilities. The street and drainage easements are hereby granted as indicated for the construction and maintenance of a sidewalk for pedestrian access to and from Reserve "A" and for drainage purposes. Reserve "A" is hereby reserved for drainage, swimming pool, club house, open space, landscaping, berms, pedestrian access, sidewalks, gazebos and utilities as confined to easements. Reserves "B" and "C" are hereby reserved for utility easements, water features, landscaping, berms, open space, and utilities as confined to easements. Reserves "D", "E", "F", "G", "H", "I", "J", "K", "L", "M", "N", "O", "P", "Q", "R", "S", "T", "U", "V", "W", "X", "Y", and "Z" are hereby reserved for utility easements, landscaping, streets, and utilities. Reserves "A", "B", "C", "D", "E", "F", "G", "H", "I", "J", "K", "L", "M", "N", "O", "P", "Q", "R", "S", "T", "U", "V", "W", "X", "Y", and "Z" shall be owned and maintained by the Homeowners Association for the addition. The streets are hereby dedicated to and for the use of the public. All abutters rights of access to or from 13th Street North over and across the north line of Reserves "B" and "C" and Lots 2, 3, 4, 5, 15, 16, 17, 18, 19, and 20, Block 2, are hereby granted to the City of Wichita, Kansas. The Minimum Building Foot Dimensions for the lowest opening to the structures shall be as shown on the accompanying plat.

Hickory Creek, LLC

Joy W Russell
Member

State of Kansas) SS The foregoing instrument acknowledged before me, this 8th day of JANUARY, 1996, by Joy W Russell, member of Hickory Creek, LLC on behalf of the company.

My April Exp. 5/19/96
Philip A. Meyer
Notary Public
State of Kansas

Me, the undersigned holders of a mortgage on the above described property, do hereby consent to this plat of HICKORY CREEK ESTABLISHMENTS, Wichita, Sedgwick County, Kansas. Wichita Federal Savings and Loan Association

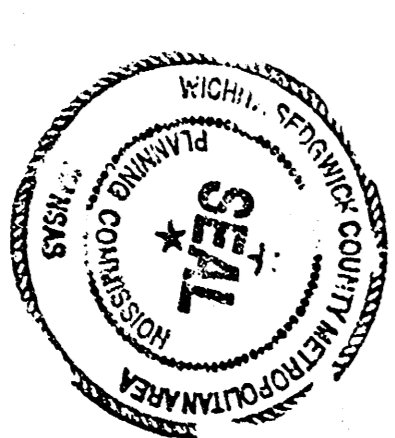
Sam E. Trammel
Vice-President

State of Kansas) SS The foregoing instrument acknowledged before me, this 5th day of January, 1996, by Sam E. Trammel, Vice-President of Wichita Federal Savings and Loan Association, on behalf of the association.

My April Exp. 5-17-96
Notary Public

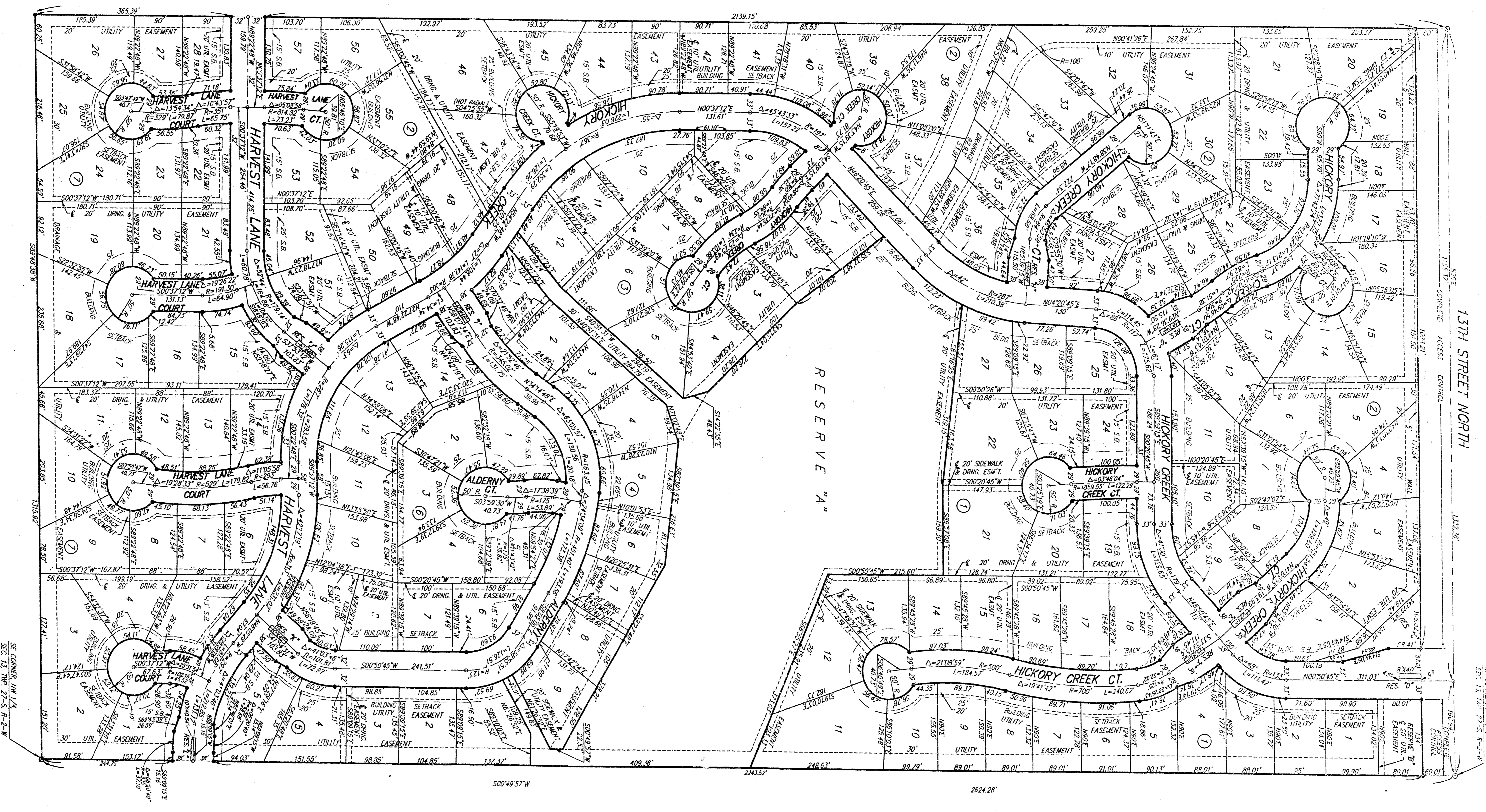
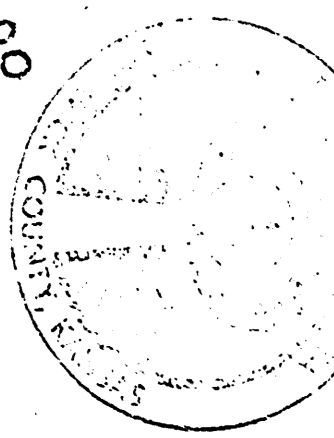
State of Kansas) SS This plat of "HICKORY CREEK ESTABLISHMENTS" Wichita, Sedgwick County, Kansas has been submitted to and approved by the Wichita-Sedgwick County Metropolitan Area Planning Commission. Dated this 5th day of November, 1995. Wichita-Sedgwick County Metropolitan Area Planning Commission

Susan Osborne-Hones
Secretary

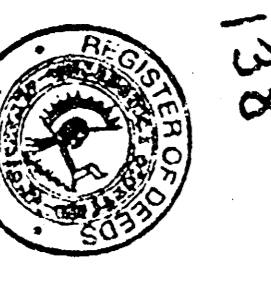


This plat approved and all dedications shown hereon accepted by the City Council of the City of Wichita, Kansas, this 2nd day of JANUARY, 1996.

Bob Kehler
Mayor



Entered on transfer record this 6th day of February 1996.
Susan E. Coakley-Spood
County Clerk



State of Kansas) SS This is to certify that this plat has been filed for record in the office of the Register of Deeds, this 6th day of February, 1996, at 1:00 o'clock P.M., and is duly recorded.

Ed Reed
Register of Deeds



1"=100'

Lot	Area (sq. ft.)	Area (sq. m.)
1	1,234.5	0.284
2	1,234.5	0.284
3	1,234.5	0.284
4	1,234.5	0.284
5	1,234.5	0.284
6	1,234.5	0.284
7	1,234.5	0.284
8	1,234.5	0.284
9	1,234.5	0.284
10	1,234.5	0.284
11	1,234.5	0.284
12	1,234.5	0.284
13	1,234.5	0.284
14	1,234.5	0.284
15	1,234.5	0.284
16	1,234.5	0.284
17	1,234.5	0.284
18	1,234.5	0.284
19	1,234.5	0.284
20	1,234.5	0.284
21	1,234.5	0.284
22	1,234.5	0.284
23	1,234.5	0.284
24	1,234.5	0.284
25	1,234.5	0.284
26	1,234.5	0.284
27	1,234.5	0.284
28	1,234.5	0.284
29	1,234.5	0.284
30	1,234.5	0.284
31	1,234.5	0.284
32	1,234.5	0.284
33	1,234.5	0.284
34	1,234.5	0.284
35	1,234.5	0.284
36	1,234.5	0.284
37	1,234.5	0.284
38	1,234.5	0.284
39	1,234.5	0.284
40	1,234.5	0.284
41	1,234.5	0.284
42	1,234.5	0.284
43	1,234.5	0.284
44	1,234.5	0.284
45	1,234.5	0.284
46	1,234.5	0.284
47	1,234.5	0.284
48	1,234.5	0.284
49	1,234.5	0.284
50	1,234.5	0.284
51	1,234.5	0.284
52	1,234.5	0.284
53	1,234.5	0.284
54	1,234.5	0.284
55	1,234.5	0.284
56	1,234.5	0.284
57	1,234.5	0.284
58	1,234.5	0.284
59	1,234.5	0.284
60	1,234.5	0.284