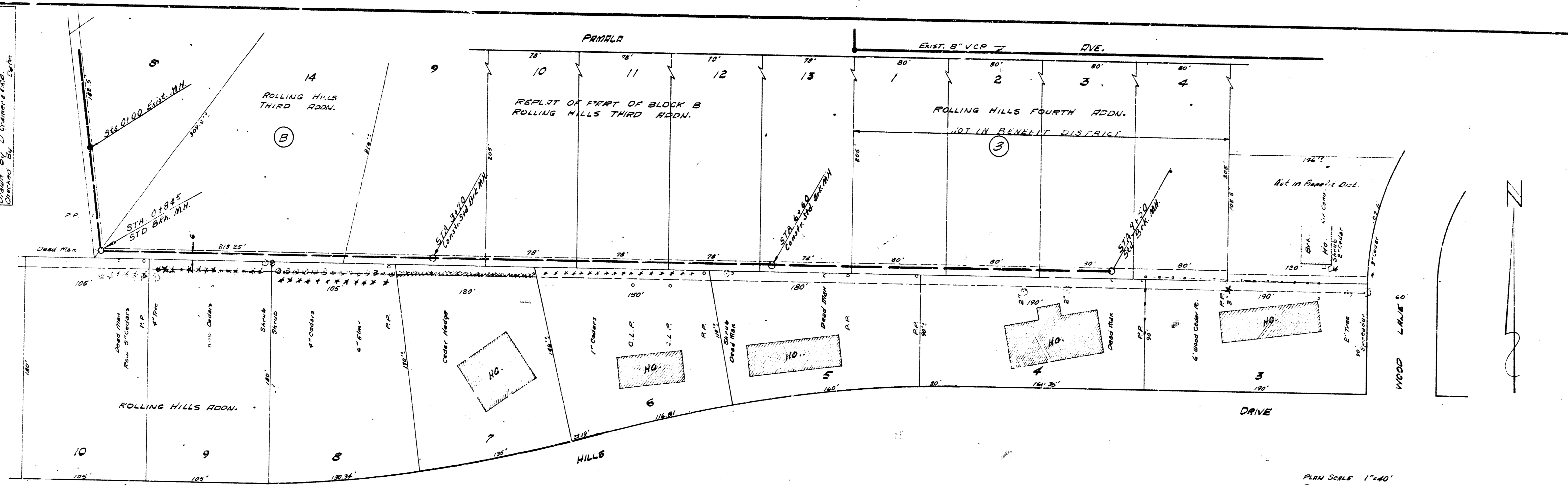
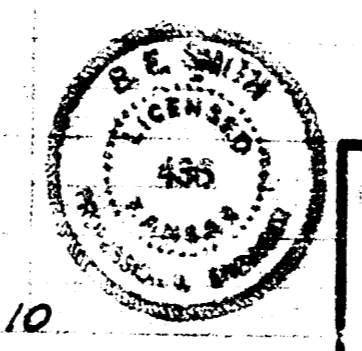
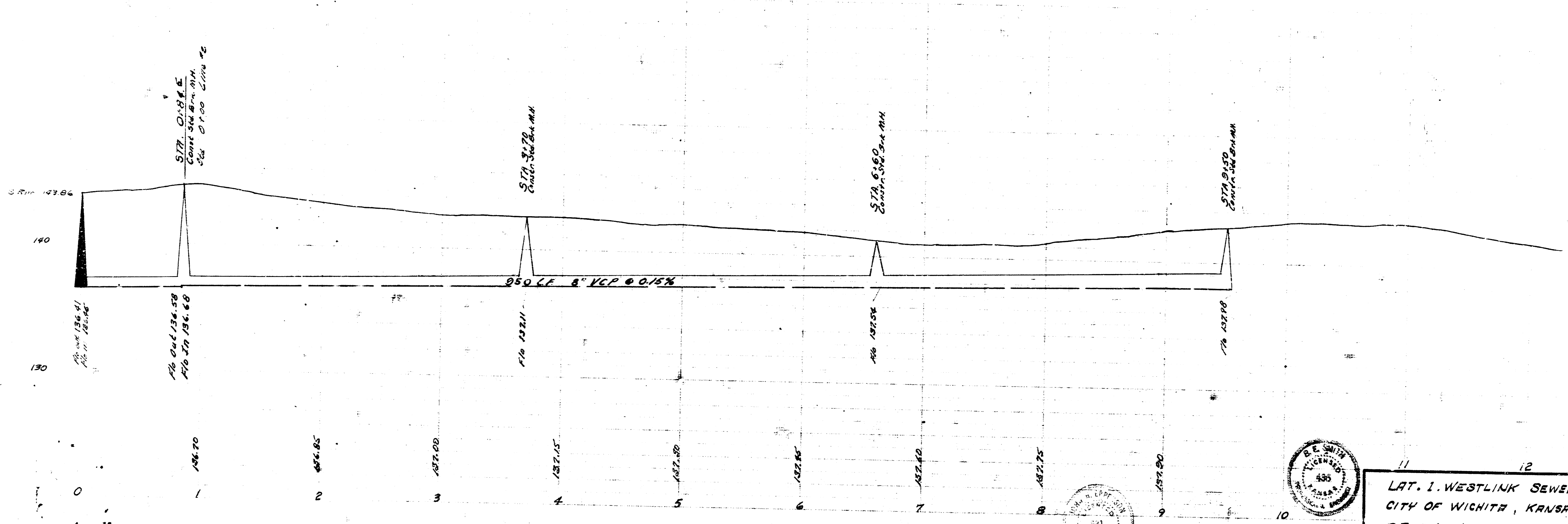


Survey by G. H. Smith, 2007
 County of Sedgewick, Kansas
 District of Sedgewick



PLAN SCALE 1"=40'
 PROFILE SCALE 1"=40' HOR.
 1"=4' VERT.

B.M. 134.60 P.P. SPIKE N.S. P.P. 50' E. OF WESTFIELD DVE & 180' N. OF N.L. ROLLING HILLS DRIVE
 B.M. 138.91 "B" IN S.W. COR. E. HUBBARD BOX CULVERT 100' S. OF ROLLING HILLS DRIVE ON TFLER



11 12
 LAT. 1. WESTLINK SEWER
 CITY OF WICHITA, KANSAS
 B.E. SMITH, CITY ENGINEER
 PROJ. NO. C23-9
 DATE JUNE 1963

