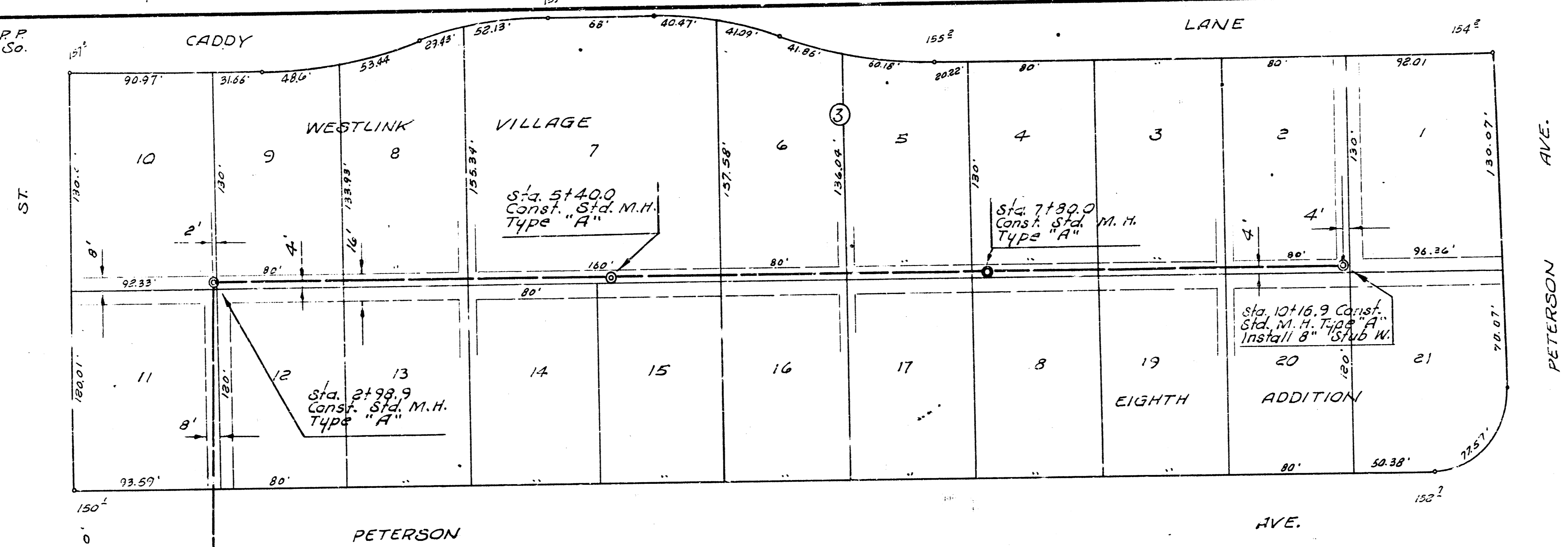
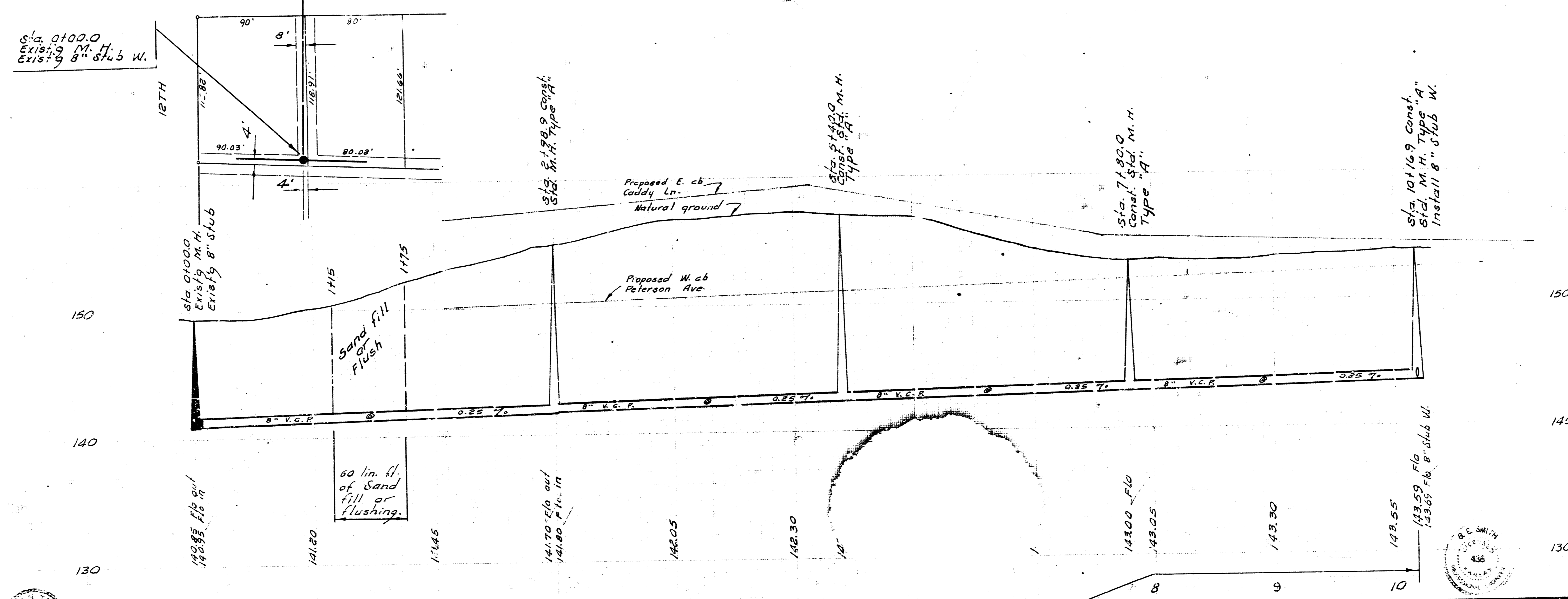


B. M. 154.42 60" step bench, S. S. P.P.
N. S. 13th @ W.L. Caddy Lane Co.

Drawn by S. W. Bk 250-V
 Checked by



Plan Scale 1" = 10' HORIZ.
Profile Scale 1" = 1' VERT.



Sta. 0+00.0
Exist'g M.H.
Exist'g 8" stub W.

Sta. 0+00.0
Exist'g M.H.
Exist'g 8" stub

Sta. 2+99.9
Const. Std. M.H.
Type "A"

Sta. 7+90.0
Const. Std. M.H.
Type "A"

Sta. 7+80.0
Const. Std. M.H.
Type "A"

Sta. 10+16.9
Const. Std. M.H.
Type "A"
Install 8" stub W.

1011.9 lin. ft. of 8" V.C.P. @ 0.25% grade.
60 lin. ft. of Sand fill, or flushing.



LAT. 34, WESTLINK SEWER
CITY OF WICHITA, KANSAS
B. E. SMITH CITY ENGINEER
MAY 1968 PROJECT NO. C28-17