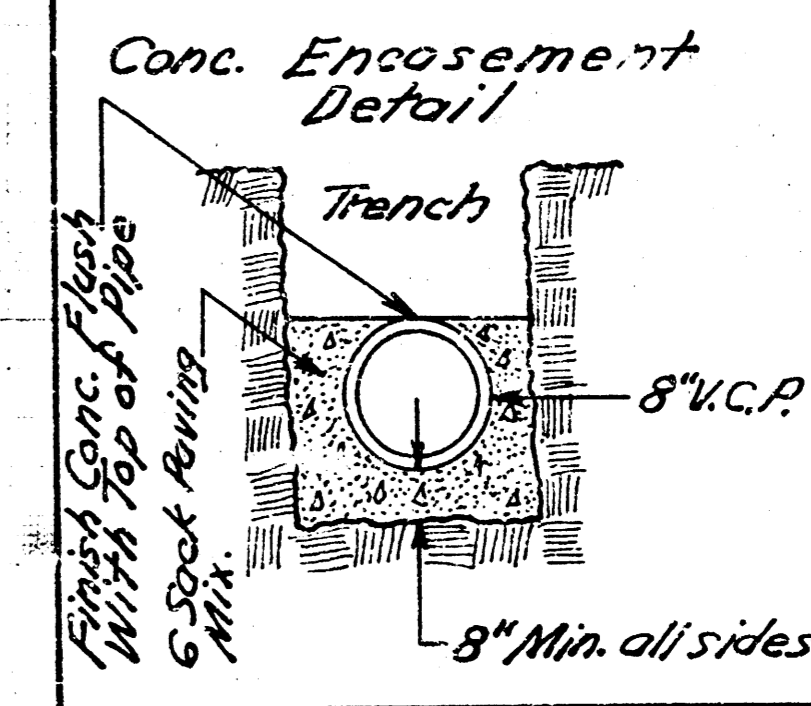
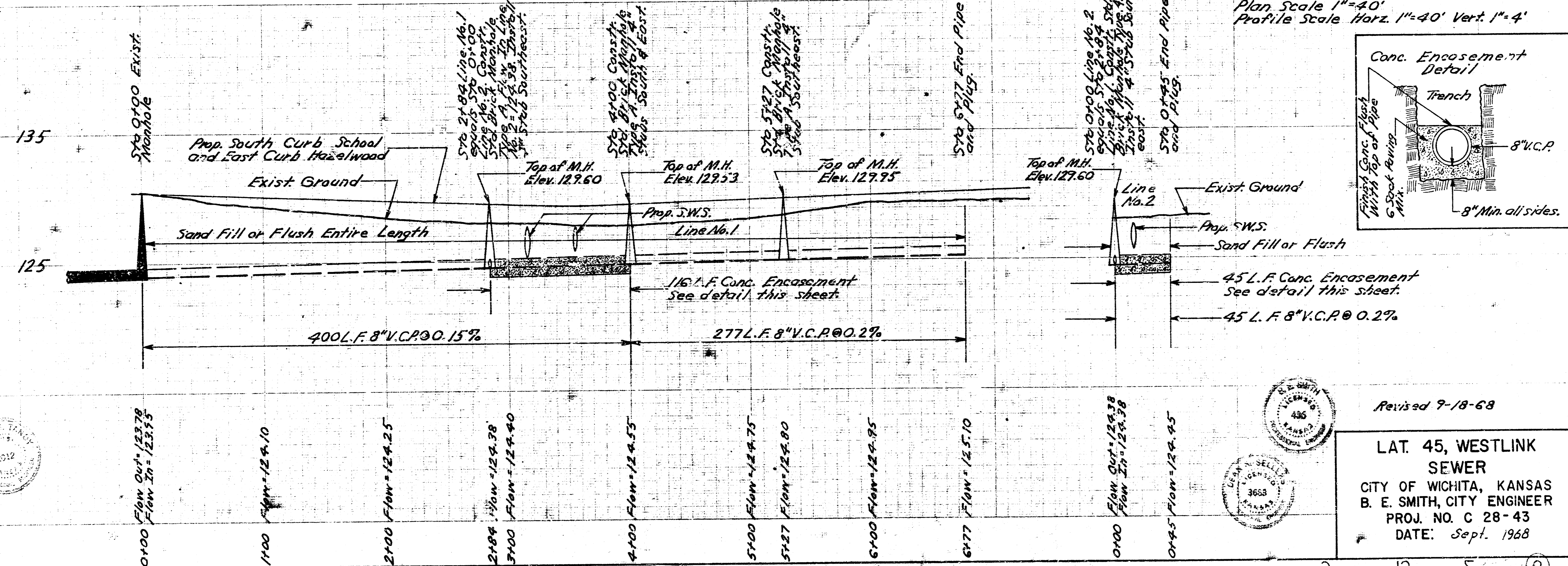
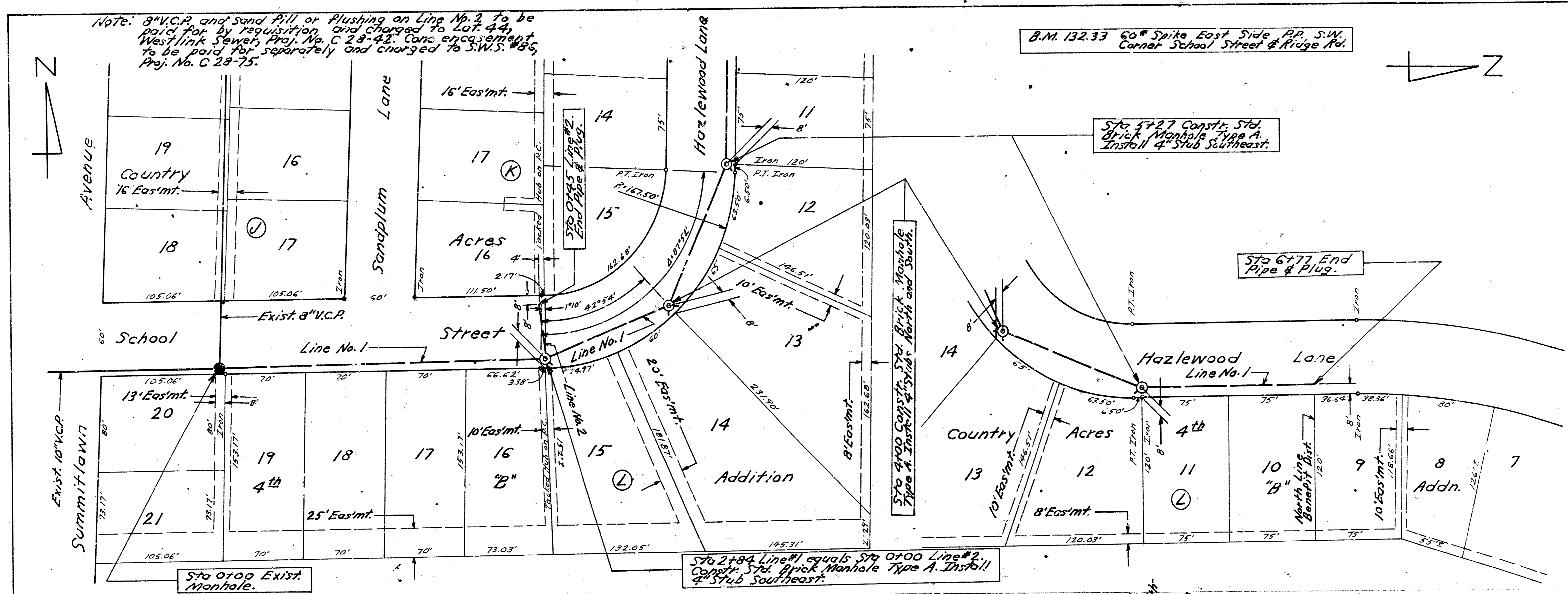


Note: 8" V.C.P. and sand fill or flushing on Line No. 2 to be paid for by requisition and charged to Lot 44, Westlink Sewers Proj. No. C 28-42. Conc. encasement to be paid for separately and charged to S.W.S. #85, Proj. No. C 28-75.

B.M. 132.33 60' Spike East Side P.P. S.W. Corner School Street & Ridge Rd.



Revised 7-18-68  
 LAT. 45, WESTLINK  
 SEWER  
 CITY OF WICHITA, KANSAS  
 B. E. SMITH, CITY ENGINEER  
 PROJ. NO. C 28-43  
 DATE: Sept. 1968

Copy to AR 42  
Sched. 1

