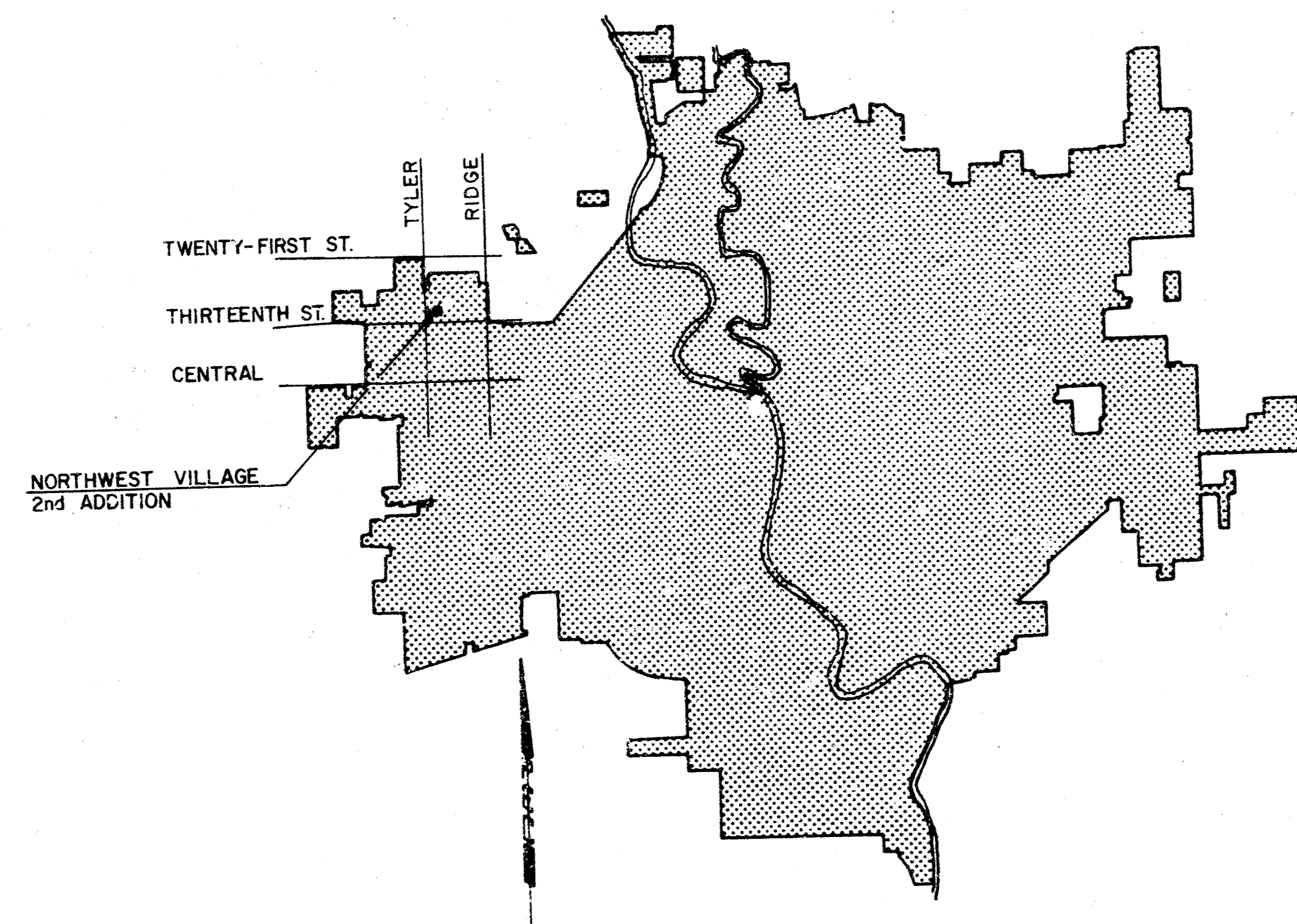


CONSTRUCTION PLANS FOR
LATERAL 89
OF THE
WESTLINK SEWER
THE CITY OF WICHITA,
SEDGWICK COUNTY, KANSAS

INDEX OF SHEETS

SHEET NO. 1 TITLE SHEET
SHEET NO. 2 KEY MAP & PLAT
SHEET NO. 3-6 PLANS & PROFILES



LOCATION MAP

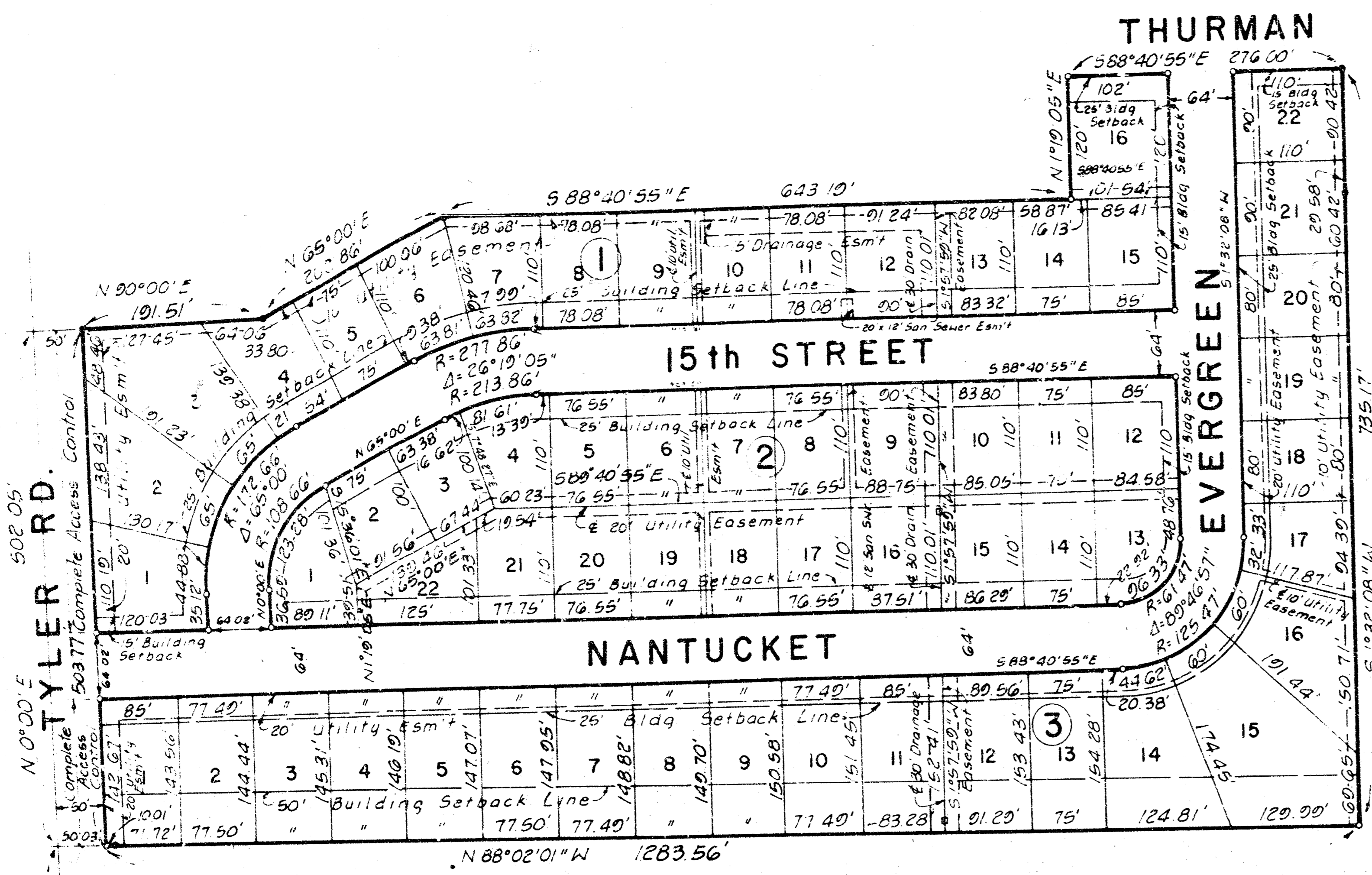
CITY OF WICHITA PROJECT NO. 468-76-245-81119-000-000-001

MAY 1981

PLANS PREPARED BY

PROFESSIONAL ENGINEERING CONSULTANTS, P.A.
ENGINEERS
WICHITA, KANSAS

Handwritten:
J. S. B. with
1/82
J. S. B.



**NORTHWEST VILLAGE 2nd ADDITION
TO WICHITA, SEDGWICK COUNTY KANSAS**

A REPLAT OF LOTS 5, 17, 18, & 19, BLK 1 NORTHWEST VILLAGE, WICHITA, SEDGWICK COUNTY, KANSAS

1/4 Cor. S1/4 Sec 9, T27S,
R1W of the 6th PM

Scale: 1" = 100'

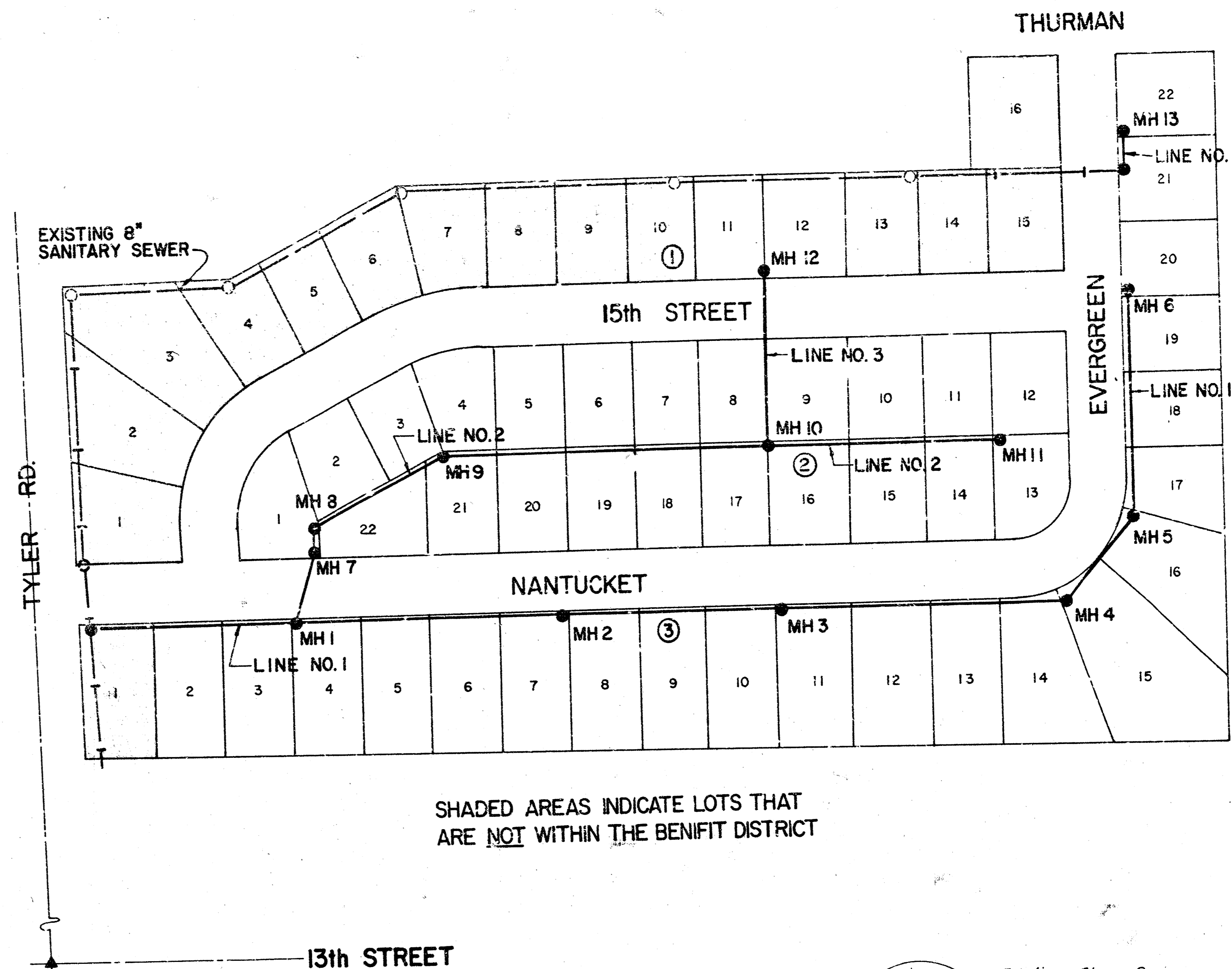
• = Existing Iron
○ = Proposed Iron

SCALE 1" = 100'

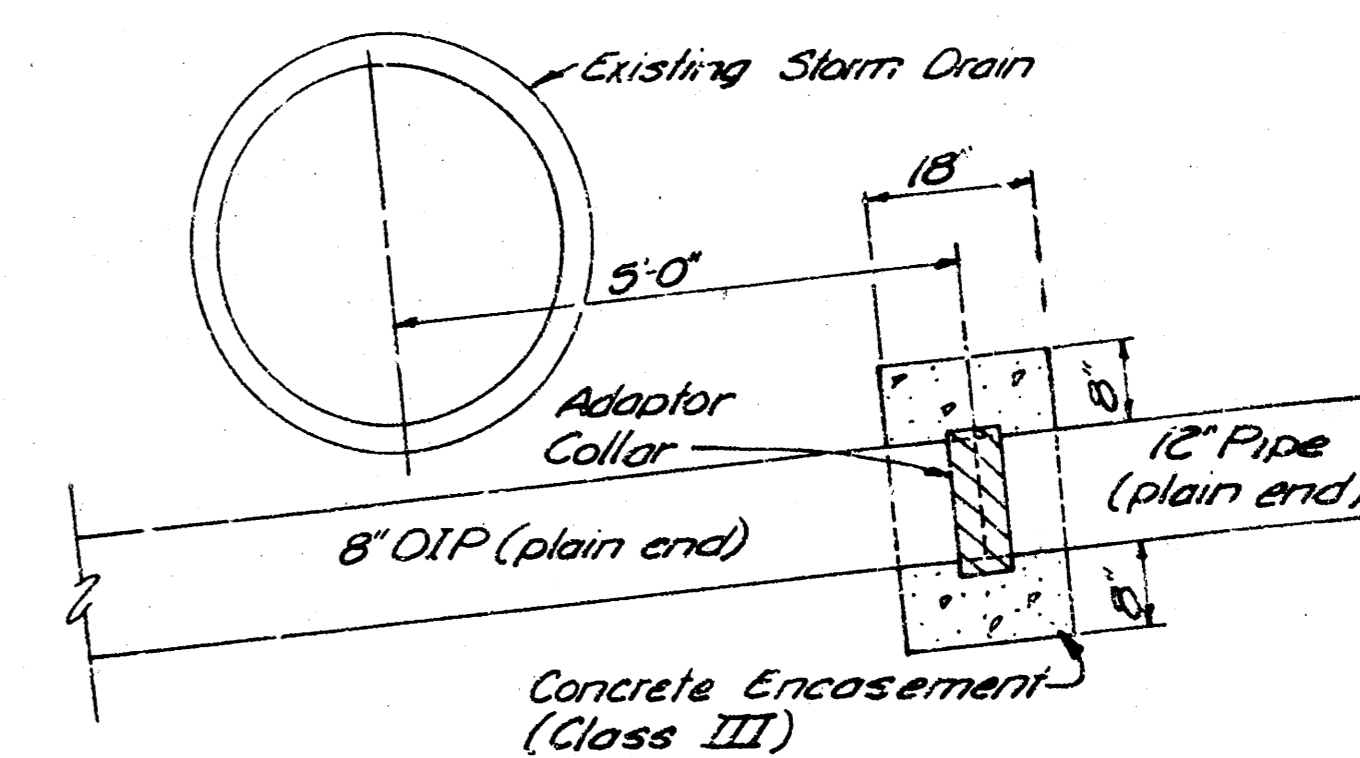
SEWER LINE SCHEDULE	
LINE NO.	SHEET NO.
1	384
2	485
3	5
4	6

BENCH MARKS

BM - NW COR. 4'x4' CONC. PAD. W/C.O.W. MH BEHIND CB ON NW COR. OF TYLER AND 13TH ST. N. ELEV.=167.55
TBM - MH RIM NEAR SW COR. LOT 1, BLK. 1 NORTHWEST VILLAGE 2ND ADDITION. ELEV.=167.05



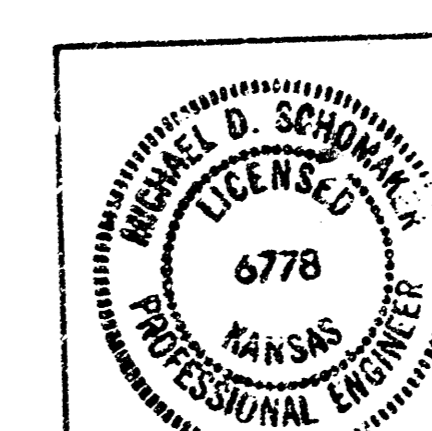
SHADED AREAS INDICATE LOTS THAT ARE NOT WITHIN THE BENEFIT DISTRICT



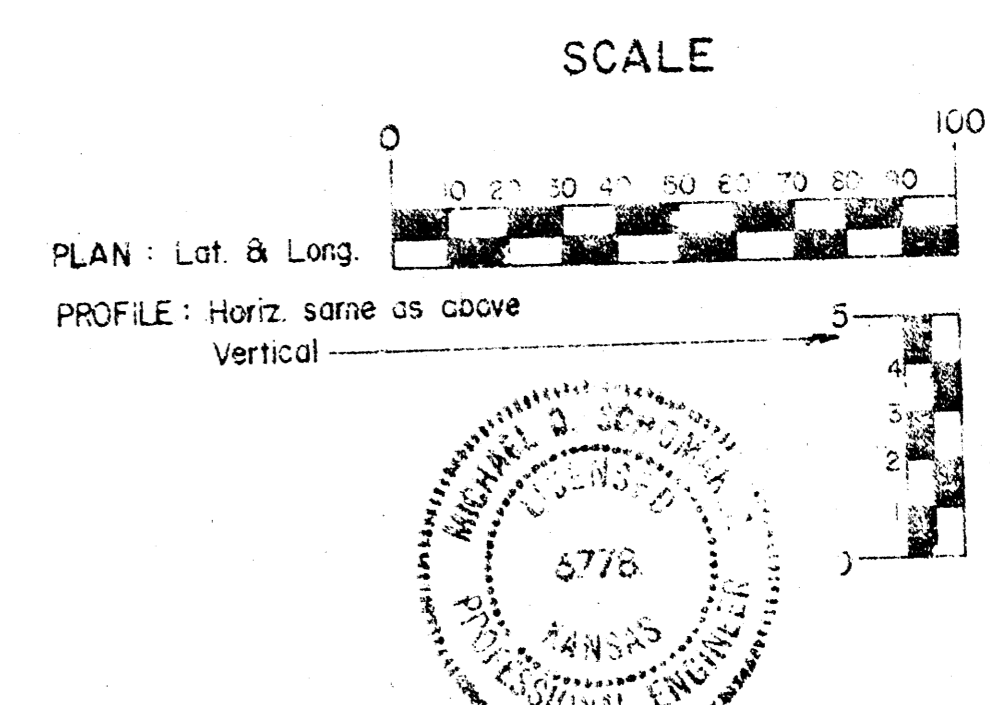
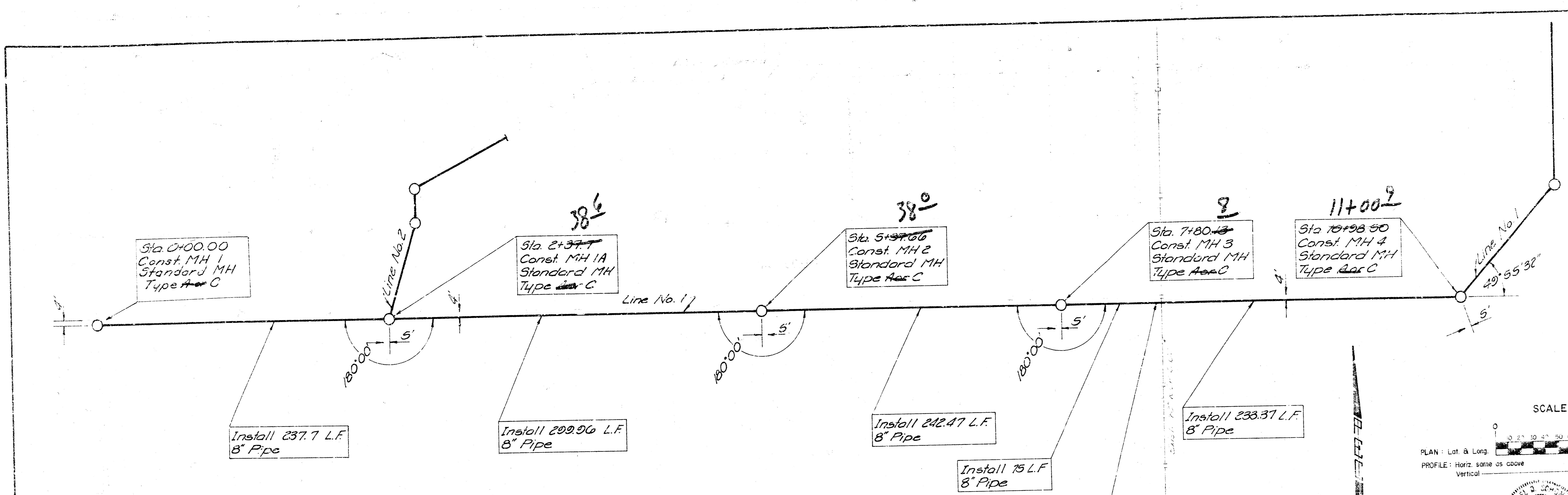
8" DIP TO 8" PIPE DETAIL

GENERAL NOTES

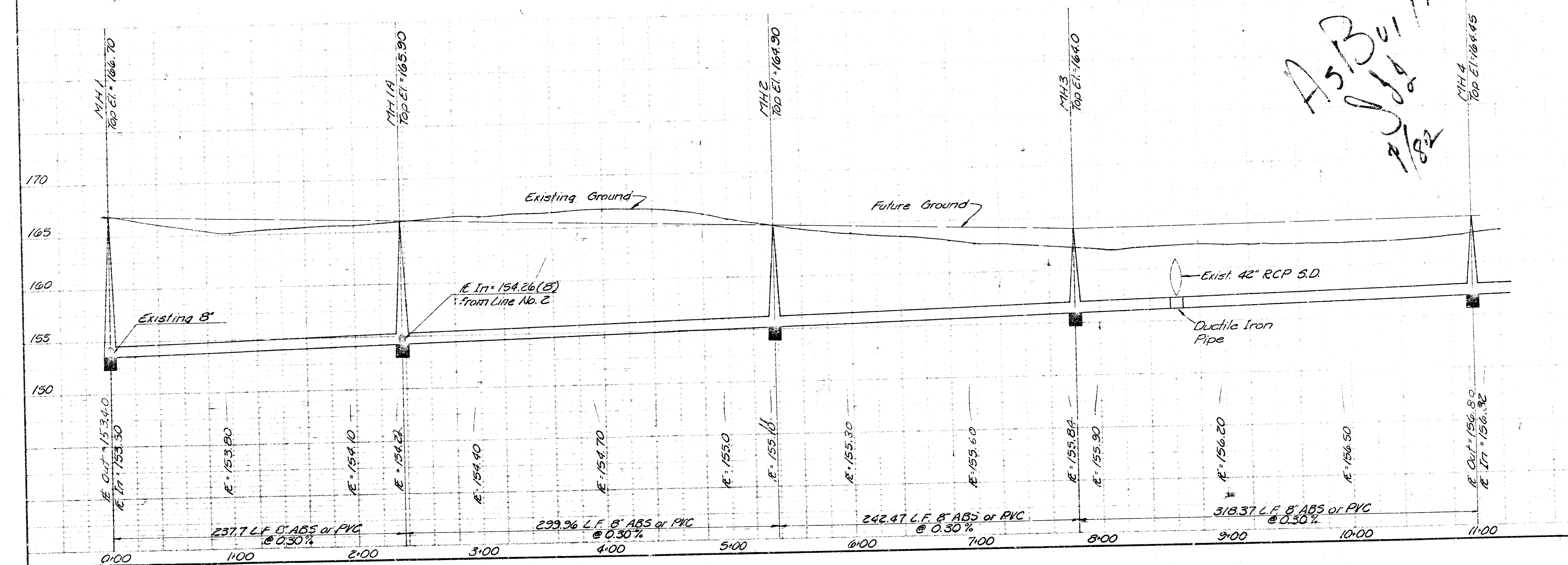
1. PRESERVATION OF PROPERTY IRONS. THE CONTRACTOR SHALL BE RESPONSIBLE FOR PRESERVING PROPERTY IRONS. THE CONTRACTOR SHALL BE REQUIRED TO RE-ESTABLISH ANY PROPERTY IRONS WHICH ARE DAMAGED OR DESTROYED BY HIS CONSTRUCTION OPERATIONS. SUCH IRONS SHALL BE RE-ESTABLISHED BY A LICENSED LAND SURVEYOR OR A LICENSED PROFESSIONAL ENGINEER IN ACCORDANCE WITH APPLICABLE STATE LAWS.
2. PRIOR TO BEGINNING CONSTRUCTION, THE CONTRACTOR SHALL VERIFY THE HORIZONTAL AND VERTICAL LOCATION OF THE EXISTING 8" SANITARY SEWER AT THE BEGINNING OF LINE NO.'S. 1. IF ANY DISCREPANCIES ARE FOUND REGARDING FIELD LOCATIONS AND PLAN LOCATIONS IN THESE AREAS, THE CONTRACTOR SHALL CONTACT THE ENGINEER FOR THE NECESSARY FIELD ADJUSTMENT CALCULATIONS PRIOR TO PROCEEDING.
3. ALL CONSTRUCTION AND MATERIALS TO COMPLY WITH CITY OF WICHITA SPECIFICATIONS AND STANDARDS.
4. SEWER LINES TO BE INSPECTED BY THE DEPARTMENT OF PUBLIC WORKS ENGINEERING DIVISION.
5. AT LEAST 48 HOURS PRIOR TO BEGINNING EXCAVATION (EXCLUDING WEEKENDS AND HOLIDAYS), THE CONTRACTOR SHALL CONTACT THE UTILITY LOCATION SERVICE "KAN-U-DIG-IT" AT (316)267-2889 TO REQUEST THE FOLLOWING UTILITY COMPANIES TO LOCATE ANY EXISTING LINES WITHIN THE PROJECT AREA: GAS SERVICE COMPANY, K.S.B.E., SOUTHWESTERN BELL TELEPHONE COMPANY, AND THE WICHITA WATER DEPARTMENT.
6. EXCESS EXCAVATED MATERIAL AND OTHER DEBRIS SHALL BE WASTED AS DIRECTED BY THE ENGINEER.
7. ALL PROPERTY IRONS DISTURBED BY THE CONTRACTOR SHALL BE RESET AT THE CONTRACTOR'S EXPENSE AS DIRECTED BY THE ENGINEER.
8. THE CONTRACTOR SHALL BE RESPONSIBLE FOR MAINTAINING CONTINUOUS FLOW OF SEWAGE THROUGH THE EXISTING SEWERS DURING CONSTRUCTION. THE CONTRACTOR'S PROPOSED METHOD FOR MAINTAINING SEWAGE FLOW SHALL BE APPROVED BY THE ENGINEER. ANY COST OF MAINTAINING FLOW OF SEWAGE DURING CONSTRUCTION WILL NOT BE PAID FOR DIRECTLY BUT SHALL BE CONSIDERED SUBSIDIARY TO THE OTHER ITEMS OF WORK.
9. ALL ELEVATIONS SHOWN ARE CITY OF WICHITA DATUM. (USGS-1187.4-CITY DATUM)



No.	Revision	By	Date
	CITY OF WICHITA, KANSAS LATERAL 69 WESTLINK SEWER		
KEY MAP AND FINAL PLAT			
NORTHWEST VILLAGE 2nd ADDITION C.O.F.W. PROJECT NO. 468-76-249-2-119-000-000-001			
PROFESSIONAL ENGINEERS CONSULTANTS, P.A.			
ENGINEERS WICHITA, KANSAS			
Designed by	MDS	Job No.	34-8126
Drawn by	GD, CL	Date	May 1981
		Sht.	1 of 6



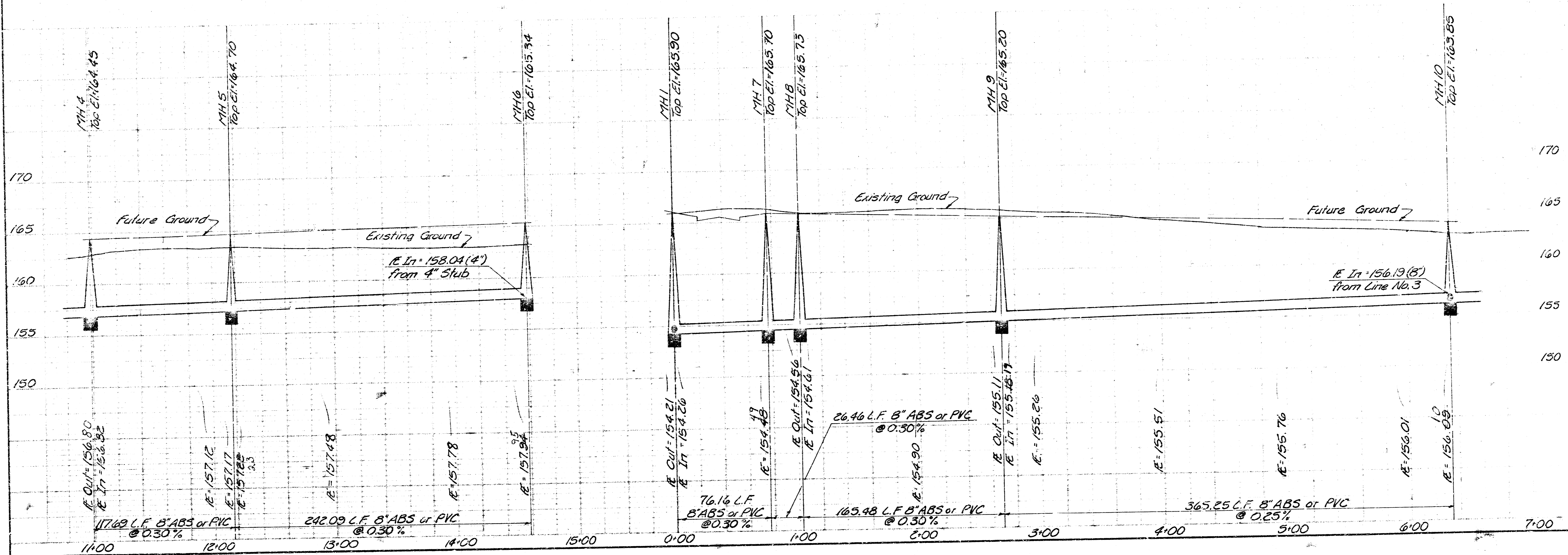
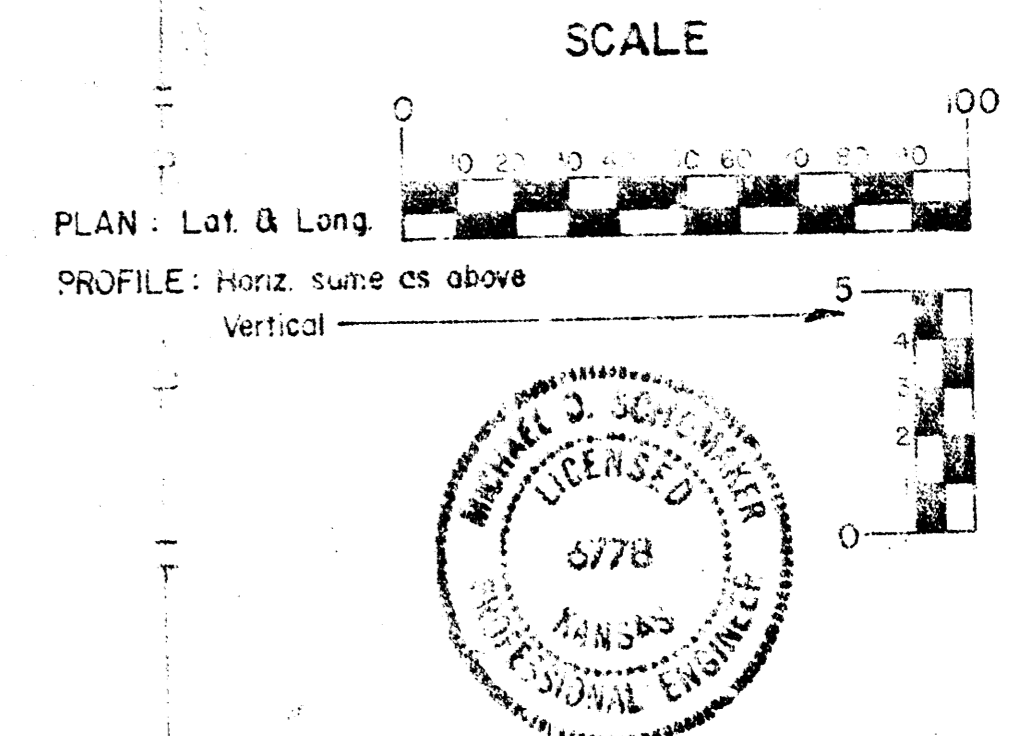
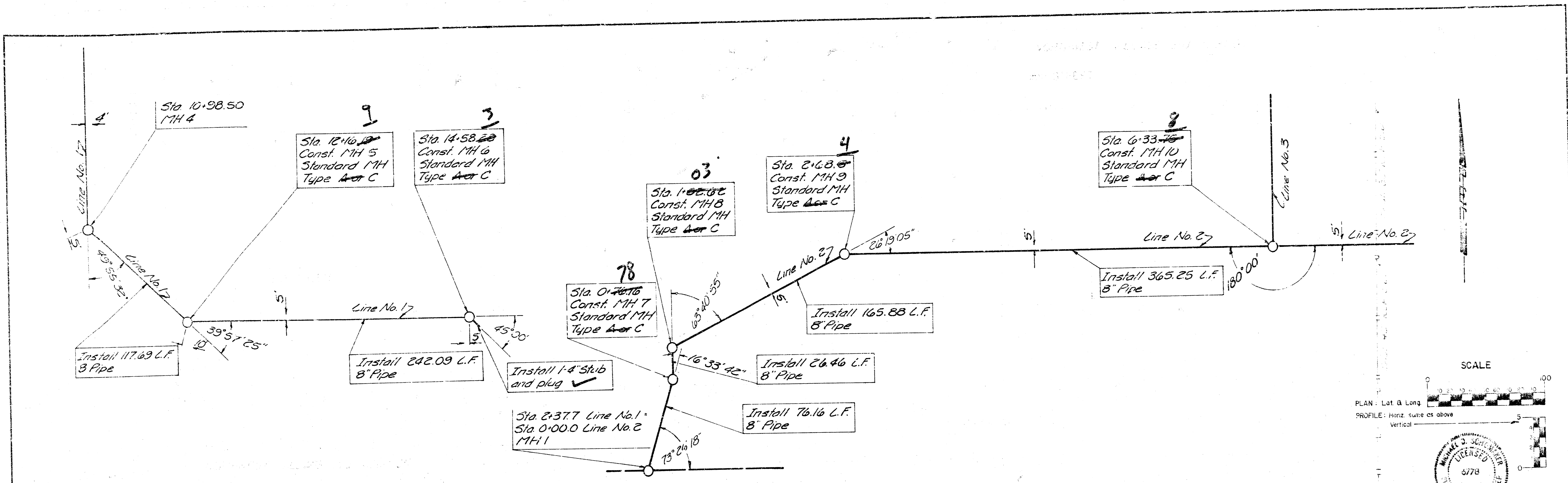
NOTE: CONTRACTOR SHALL EXCAVATE STORM SEWER AT STATIONS 8+60 ON LINE #1 SO THAT FIELD ENGINEER CAN VERIFY ELEVATIONS PRIOR TO THE INSTALLATION OF ANY SANITARY SEWER PIPE.



As Built
J. J. [unclear]
7/82

PROFESSIONAL ENGINEERING CONSULTANTS, P.A.
WILMOTA, KANSAS
L. S. [unclear]
MAY 1981

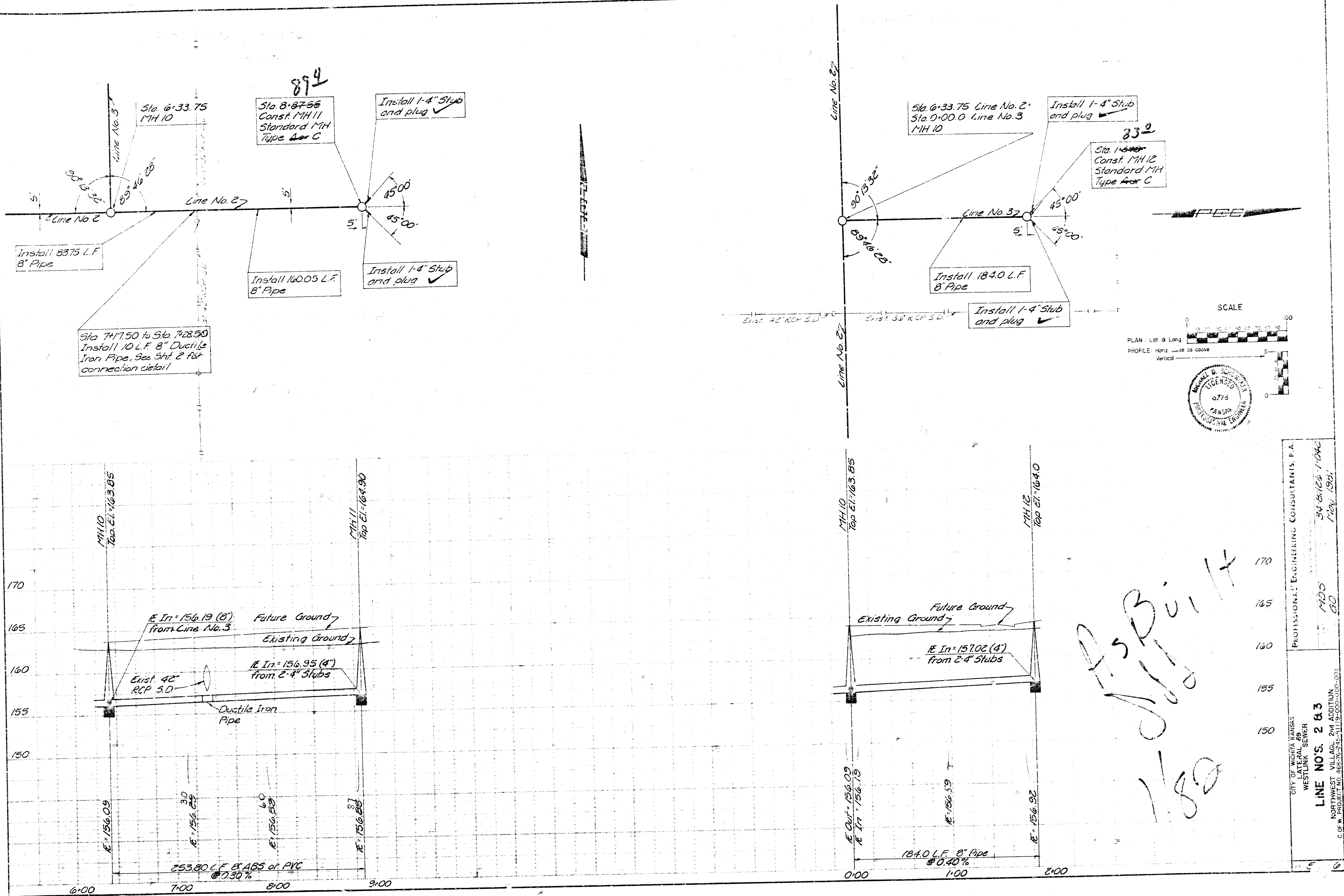
CITY OF WICHITA KANSAS
LATERAL 69
W. STINK SEWER
LINE NO. 1
NORTHWEST VILLAGE 2nd ADDITION
C.O.P. PROJECT NO. 1992-1-1919-000-001-021



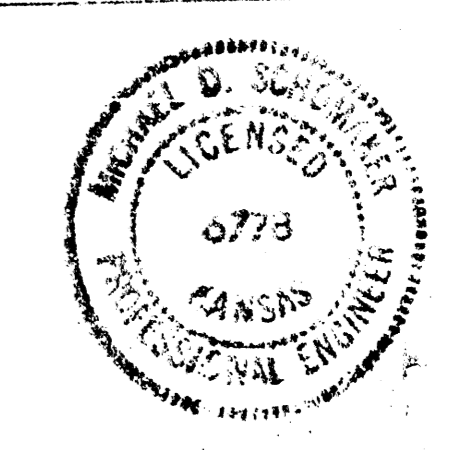
CITY OF WICHITA KANSAS
 NORTHWEST VILLAGE 2nd ADDITION
 WESTLINK SEWER
LINE NOS. 1 & 2
 PROJECT NO. 462-76-244-8119-000-001-001
 C.O.F.W. PROJECT NO. 462-76-244-8119-000-001-001

PROFESSIONAL ENGINEERING CONSULTANTS, P.A.
 WILSON, K.S.A.
 MDS
 3D
 348166-1042
 May 1981

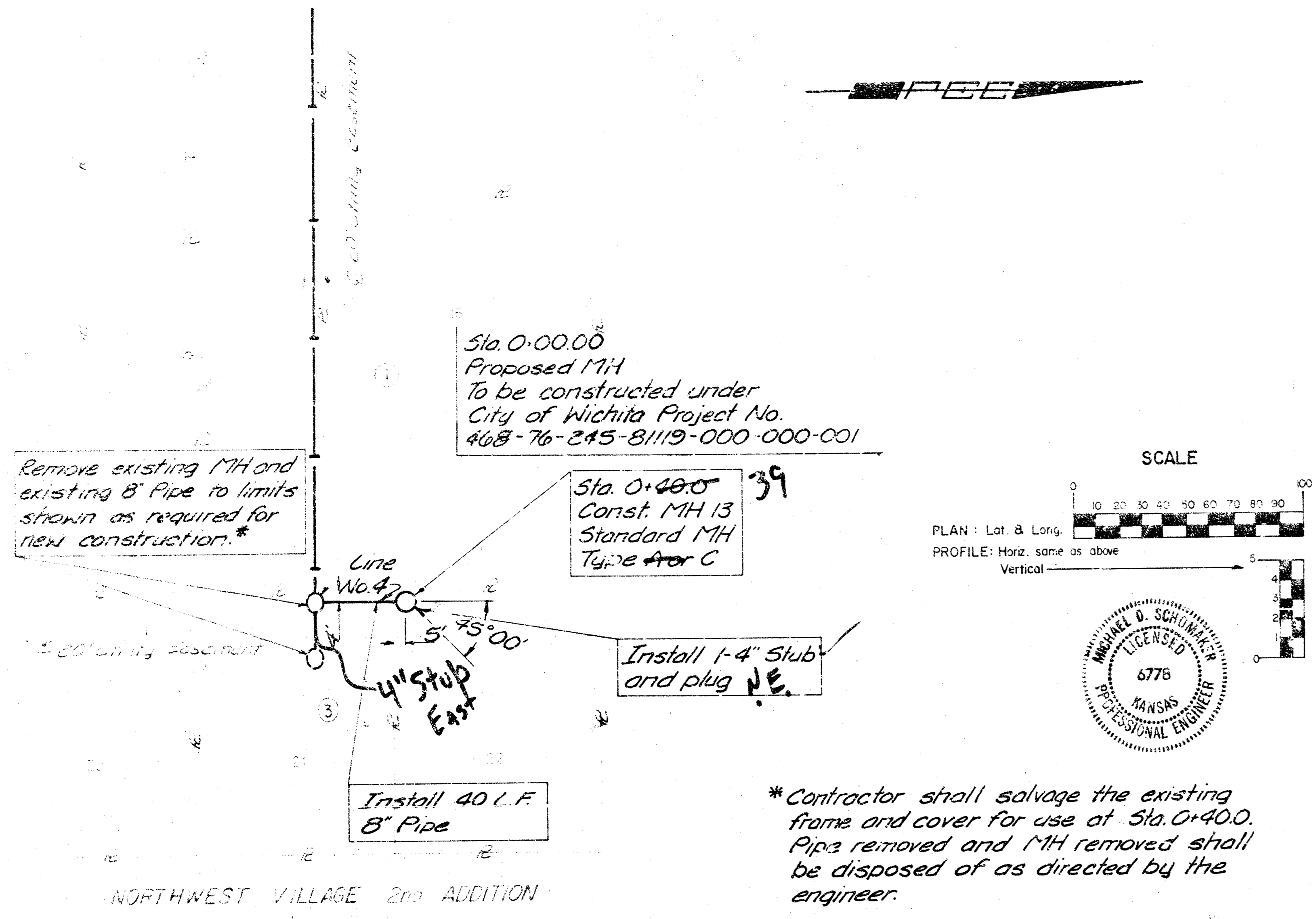
FILMED FROM THE BEST AVAILABLE COPY.....



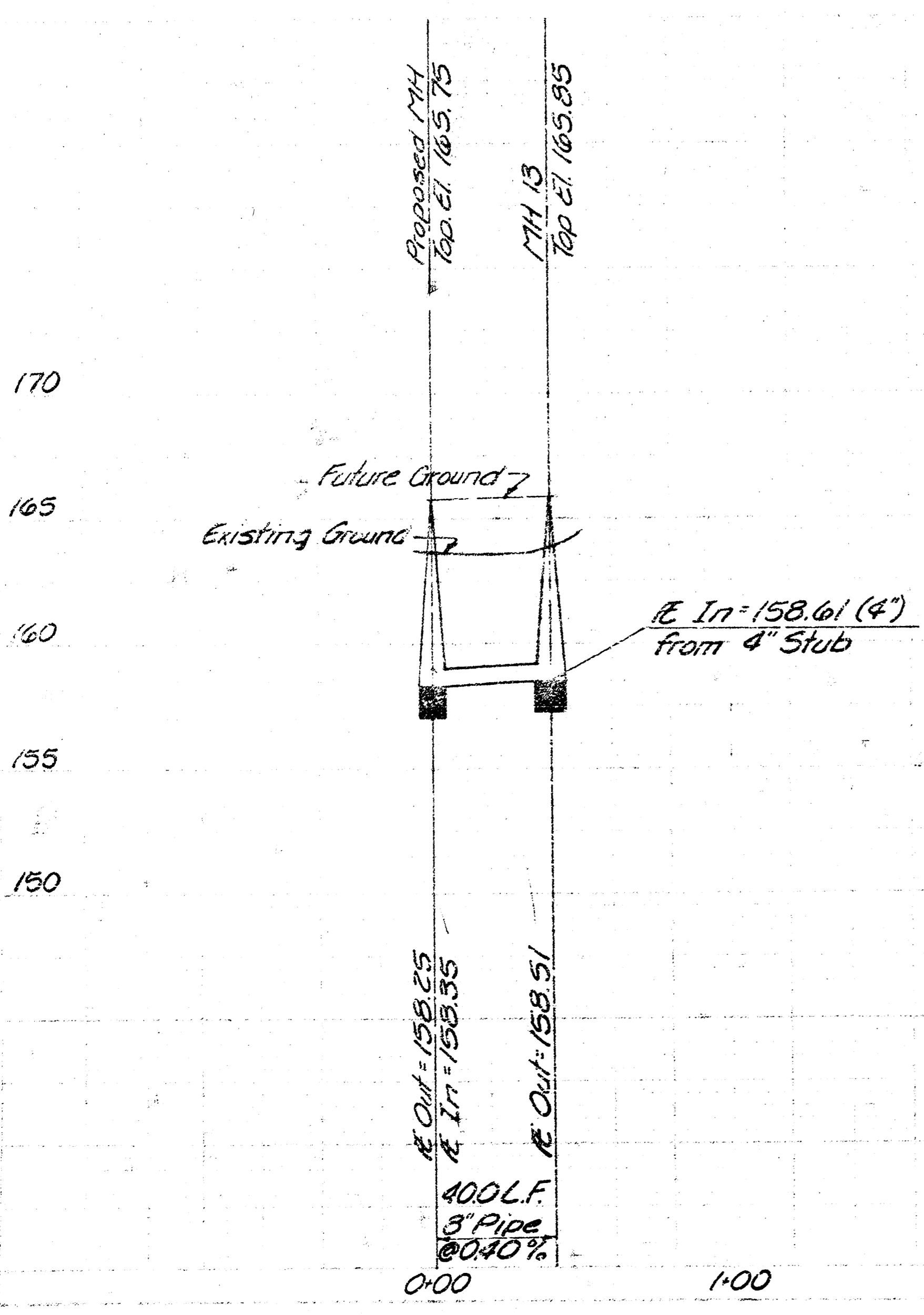
As Built
1/80



PROFESSIONAL ENGINEERING CONSULTANTS, P.A.
 CITY OF WENITA, KANSAS
 LATEL 69
 WESTLINK SEWER
LINE NOS. 2 & 3
 NORTHWEST VILLAGE, 2nd ADDITION
 C. OF W. PROJECT NO. 489-76-245-4119-000-1000-001
 MDS
 GD
 34 8/126 1-04C
 1/12/1901



* Contractor shall salvage the existing frame and cover for use at Sta. 0+40.0. Pipes removed and MH removed shall be disposed of as directed by the engineer.



As Built
11/1/82

CITY OF WICHITA, KANSAS LATERAL 69 WESTLINK SEWER	PROFESSIONAL ENGINEERING CONSULTANTS, P.A.
LINE NO. 4	1705 60
NORTHWEST VILLAGE, 2nd ADDITION C. OF W. PROJECT NO. 468-76-245-8119-000-000-001	34-B111-1-042 1705, 1987