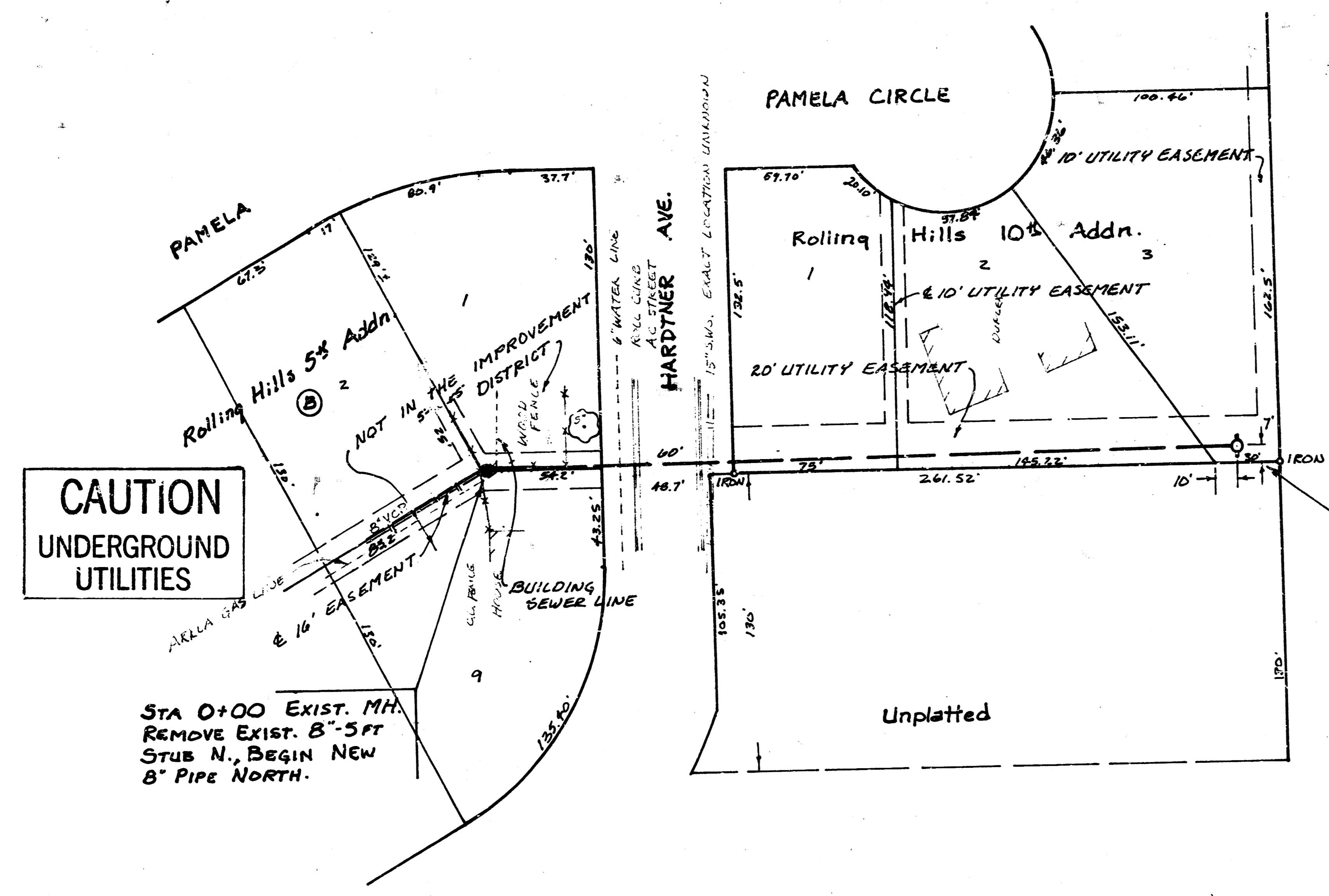


SCALE PLAN 1" = 40'
PROFILE 1" = 40' HORIZ.
1" = 5' VERT.

THE CONTRACTOR SHALL BE RESPONSIBLE FOR PRESERVING PROPERTY IRONS. THE CONTRACTOR SHALL BE REQUIRED TO RE-ESTABLISH ANY PROPERTY IRONS WHICH ARE DAMAGED OR DESTROYED BY HIS CONSTRUCTION OPERATIONS. SUCH IRONS SHALL BE RE-ESTABLISHED BY A LICENSED LAND SURVEYOR OR A LICENSED PROFESSIONAL ENGINEER IN ACCORDANCE WITH STATE LAWS.



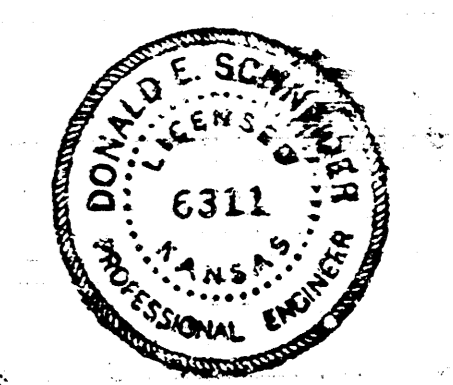
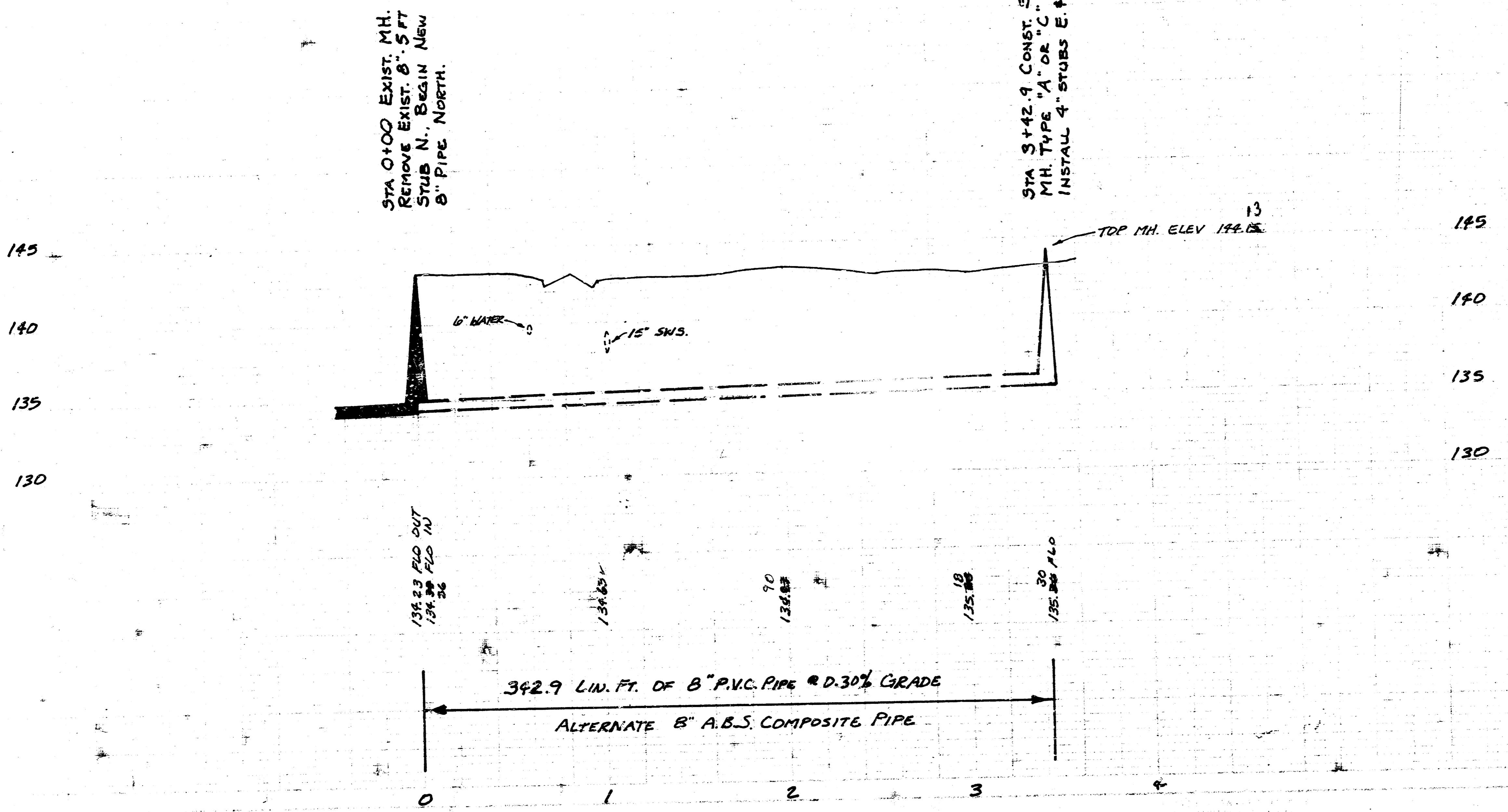
- NOTES:
1. THE CONTRACTOR SHALL RESTORE THE AREA OF CONSTRUCTION SOUTH OF THE SOUTH CURB OF HARDTNER TO ITS ORIGINAL CONDITION. THE CONTRACTOR SHALL ACCOMPLISH THIS BY CUTTING AND SAVING THE ORIGINAL SOIL AND REPLACING IT OR BY USING NEW SOIL OF THE SAME KIND AND OF EQUAL OR BETTER QUALITY. THIS SHALL BE PAID FOR IN THE LUMP SUM BID ITEM FOR "SITE RESTORATION".
 2. THE CONTRACTOR SHALL CONFINE CONSTRUCTION TO WITHIN THE LIMITS OF THE 10 FT. EASEMENT. ANY DAMAGE DONE BY THE CONTRACTOR OUTSIDE OF THE EASEMENT SHALL BE REPAIRED AT THE CONTRACTOR'S EXPENSE.

As Built
J.L.L.
12-83

45.5
STA 3+42.9 CONST. STP.
MH TYPE "A" OR "C"
INSTALL 4" STUBS E. & W. ✓

- NOTES (CONT.):
3. CONTRACTOR WILL BE REQUIRED TO GIVE PROPERTY OWNERS AND/OR TENANTS OF LOTS 1 & 9, BLK. B, ROLLING HILLS 5th ADDN. A MINIMUM ADVANCE NOTICE OF 48 HOURS PRIOR TO STARTING CONSTRUCTION.
 4. SAW JOINT FOR PAVEMENT REMOVED SHALL BE INCIDENTAL TO THE PROJECT.
 5. COST FOR 8" PIPE REMOVAL SHALL BE INCLUDED IN BID ITEM FOR "8 INCH PIPE".
 6. THE PAYMENT FOR PAVEMENT REMOVED AND RECONSTRUCTED SHALL BE ON A LINEAR FOOT BASIS AS MEASURED ALONG THE CENTER LINE OF THE SEWER AND IS NOT CONTROLLED BY THE AREA OF PAVEMENT REMOVED AND REPLACED.

B.M. 197.65 WESTLINK AND CENTRAL, CITY STD DISC. TOP NORTH HANDRAIL AT EAST END R.C.B.
B.M. 191.51 "B" SE CORNER OF PAMELA AND HARDTNER ON TOP CURB IN MIDDLE OF STREET RADIUS.



PROJECT DESCRIPTION		
LATERAL 70, WESTLINK SEWER		
PROJECT NUMBER		
468-76-245-81222-000-000-001		
BOOK NO. DWV-73	APPROVED BY	DATE
DRAWN BY L.O.M.15	REVISIONS	
CITY OF WICHITA		
DEPARTMENT OF ENGINEERING		
M. E. LINDEBAK - CITY ENGINEER	SCALE	

FILMED FROM THE BEST AVAILABLE COPY