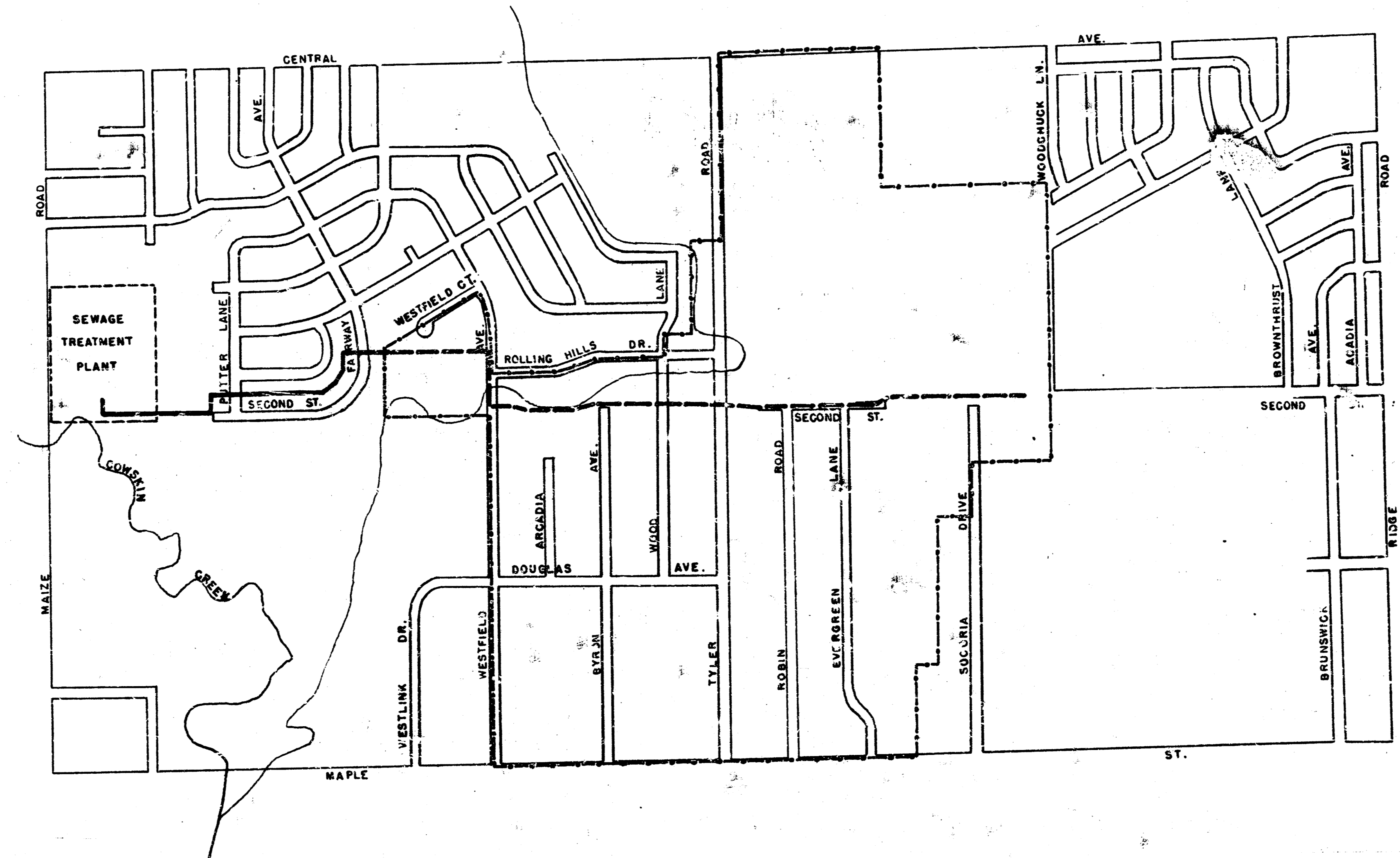
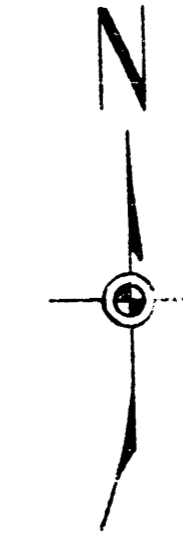


PLAN AND PROFILE FOR
SUBMAIN 1, WESTLINK SEWER
 CITY OF WICHITA, KANSAS
 B. E. SMITH - CITY ENGINEER
 PROJECT NO. C25-29

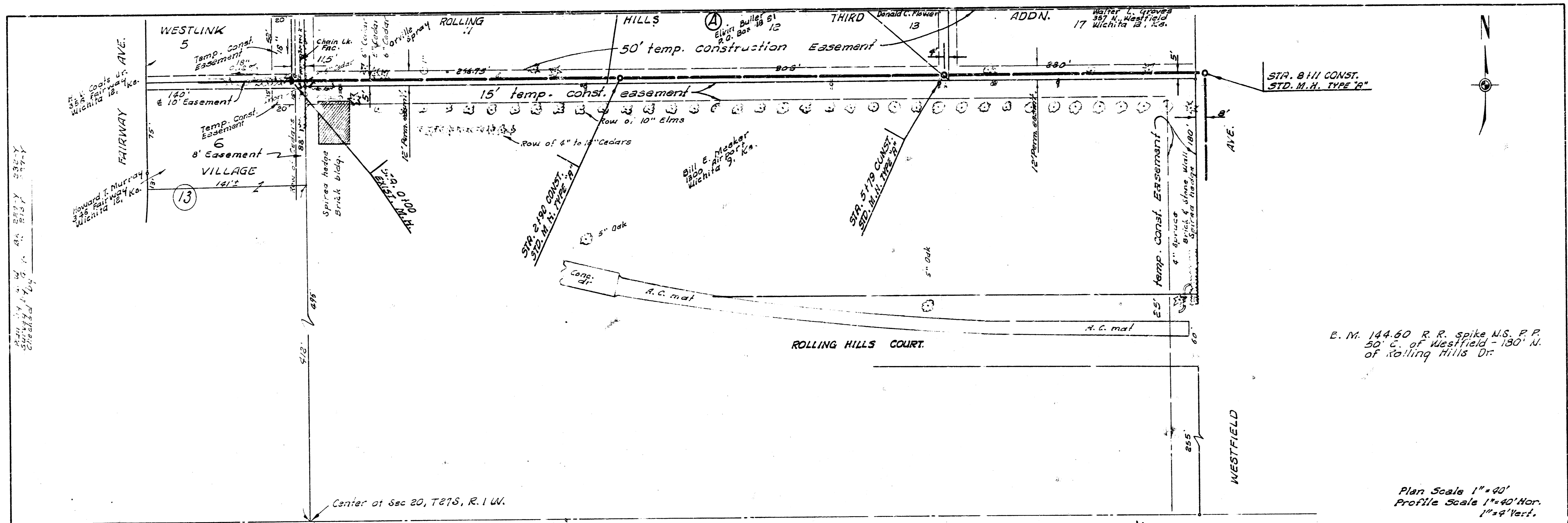


KEY
 - - - - - BOUNDARY
 - - - - - SUBMAIN 1, WESTLINK S.S.
 - - - - - EXIST. SAN. SEWER



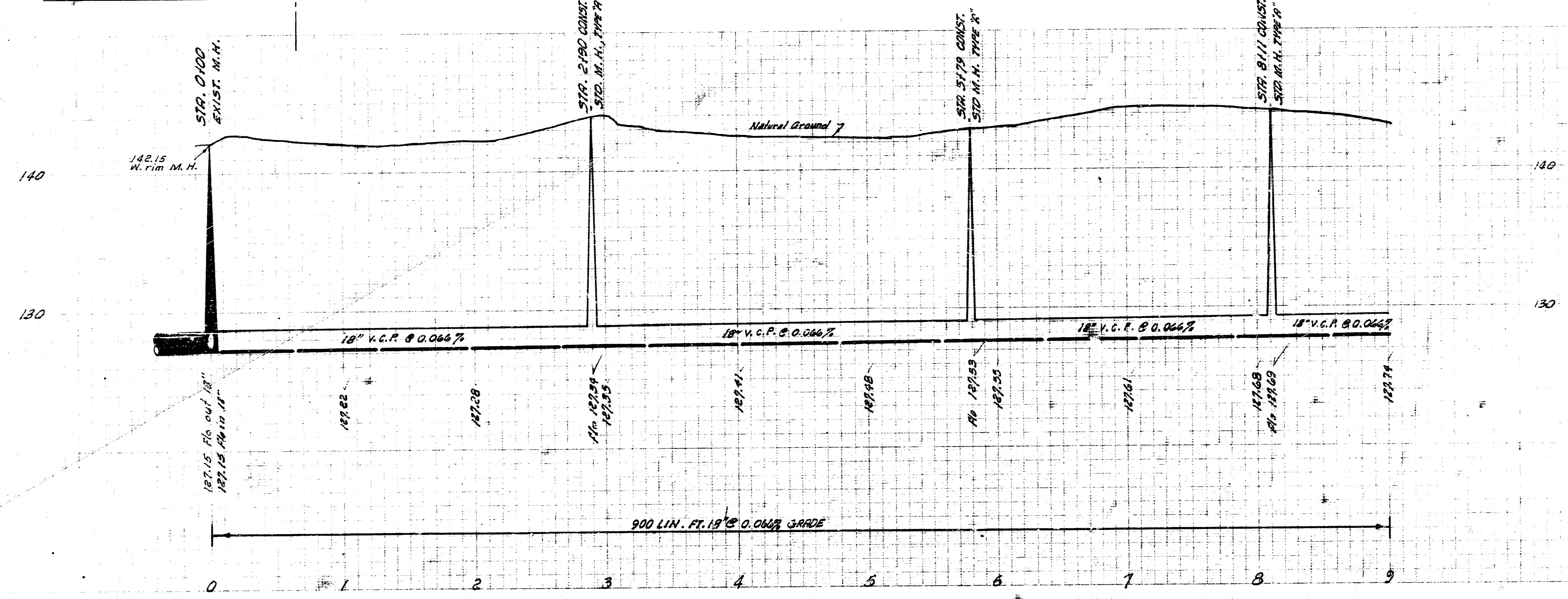
JUNE 7, 1966
 B. E. SMITH - CITY ENGINEER

SUBMAIN 1, WESTLINK SEWER
 PROJECT NO. C25-29
 SHEET NO. 1 OF 8



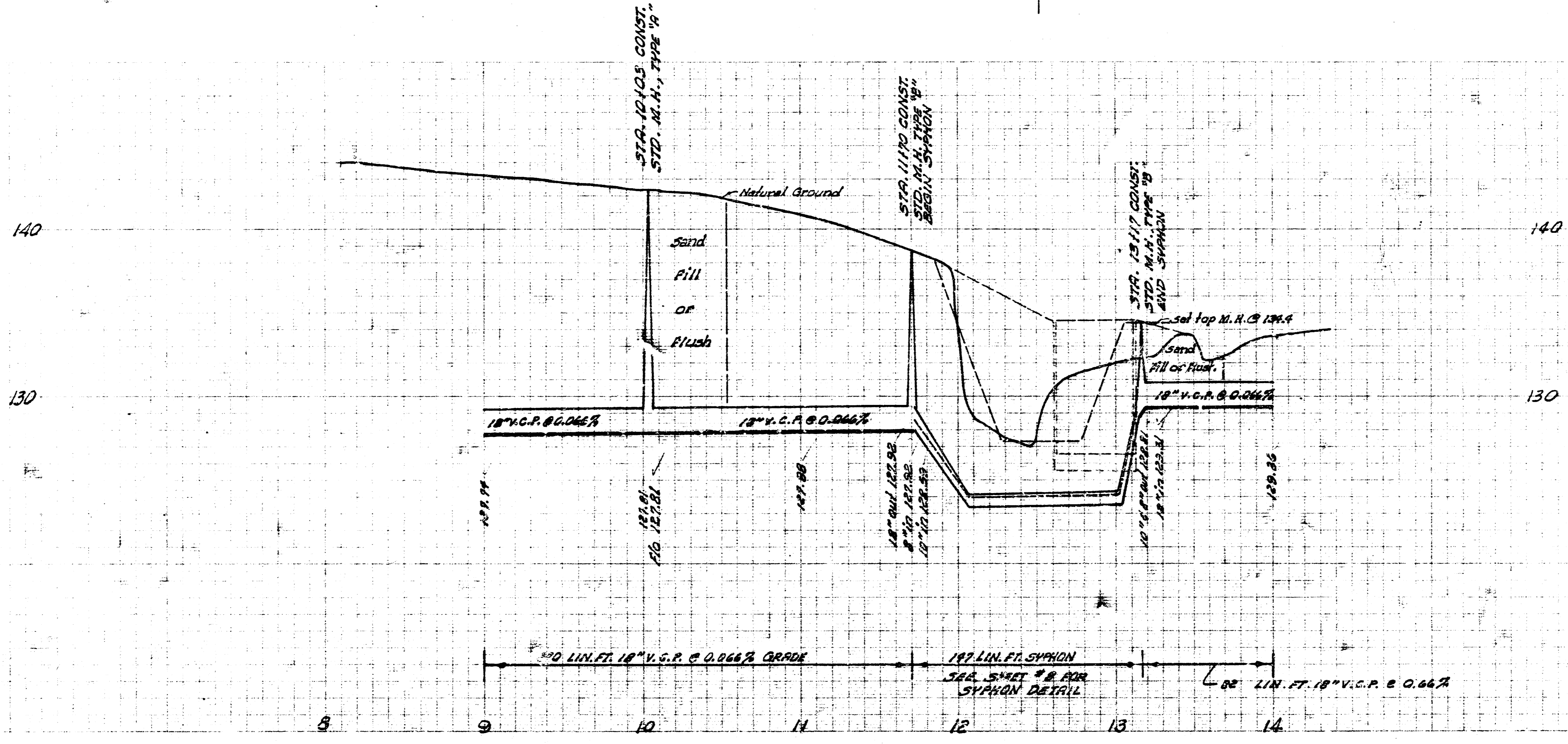
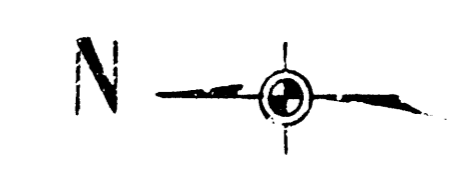
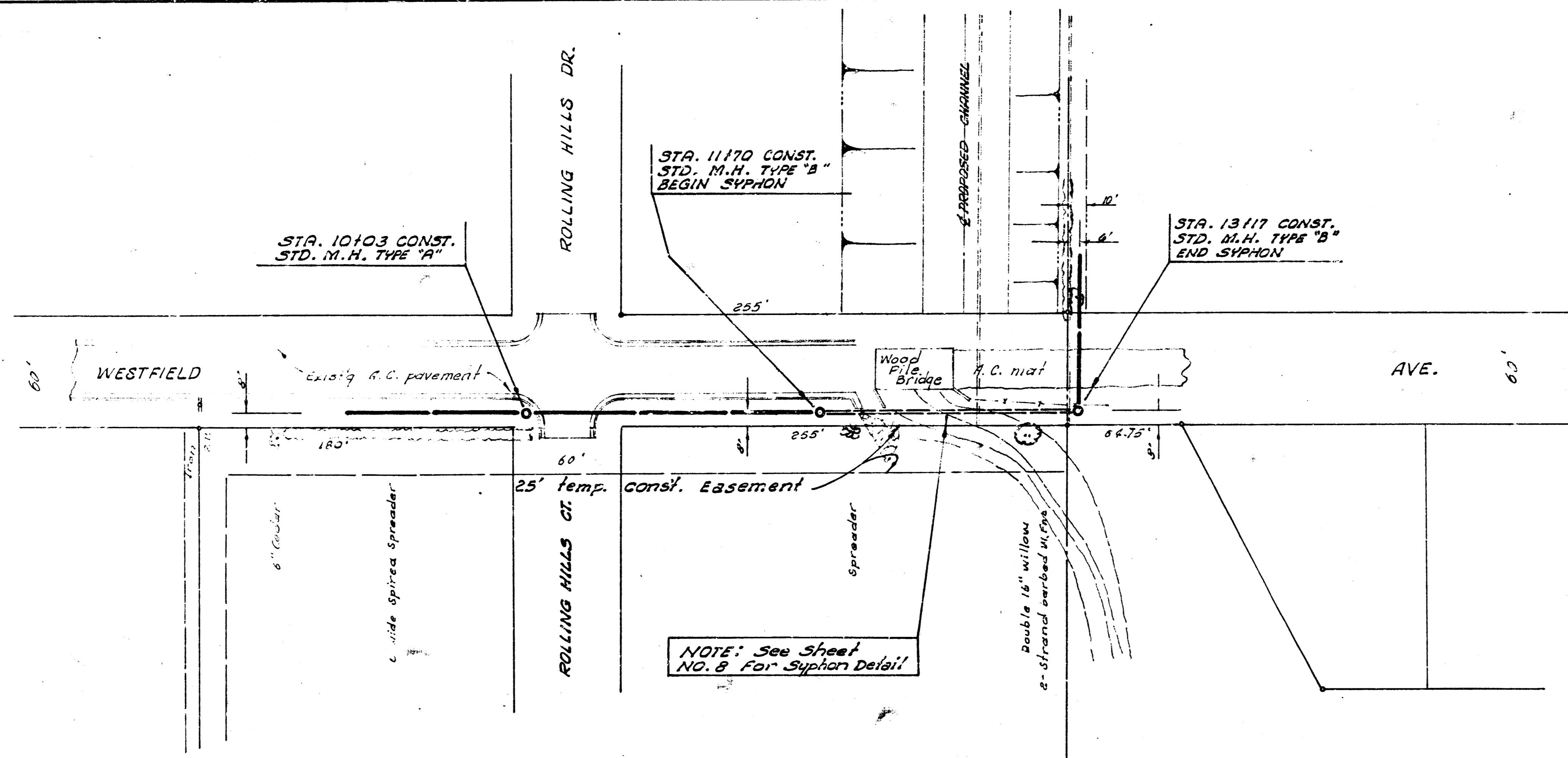
E. M. 144.60 R. R. spike N.S. P.P.
 50' E. of Westfield - 130' N.
 of Rolling Hills Dr.

Plan Scale 1" = 40'
 Profile Scale 1" = 4' Hor.
 1" = 4' Vert.

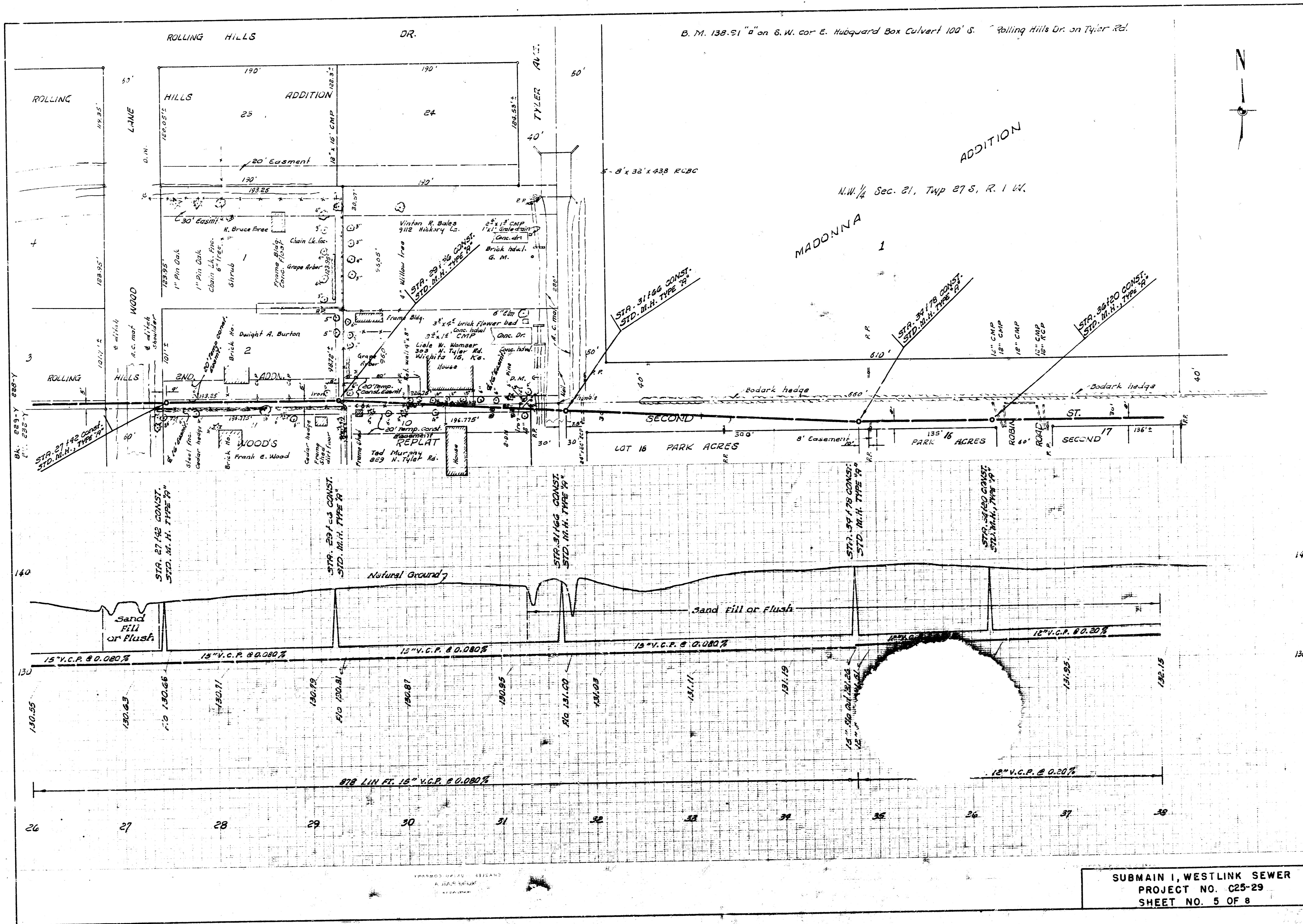


SUBMAIN 1, WESTLINK SEWER
 PROJECT NO. C25-29
 SHEET NO. 2 OF 8

53-Y
53-Y



SUBMAIN 1, WESTLINK SEWER
PROJECT NO. C25-29
SHEET NO. 3 OF 8

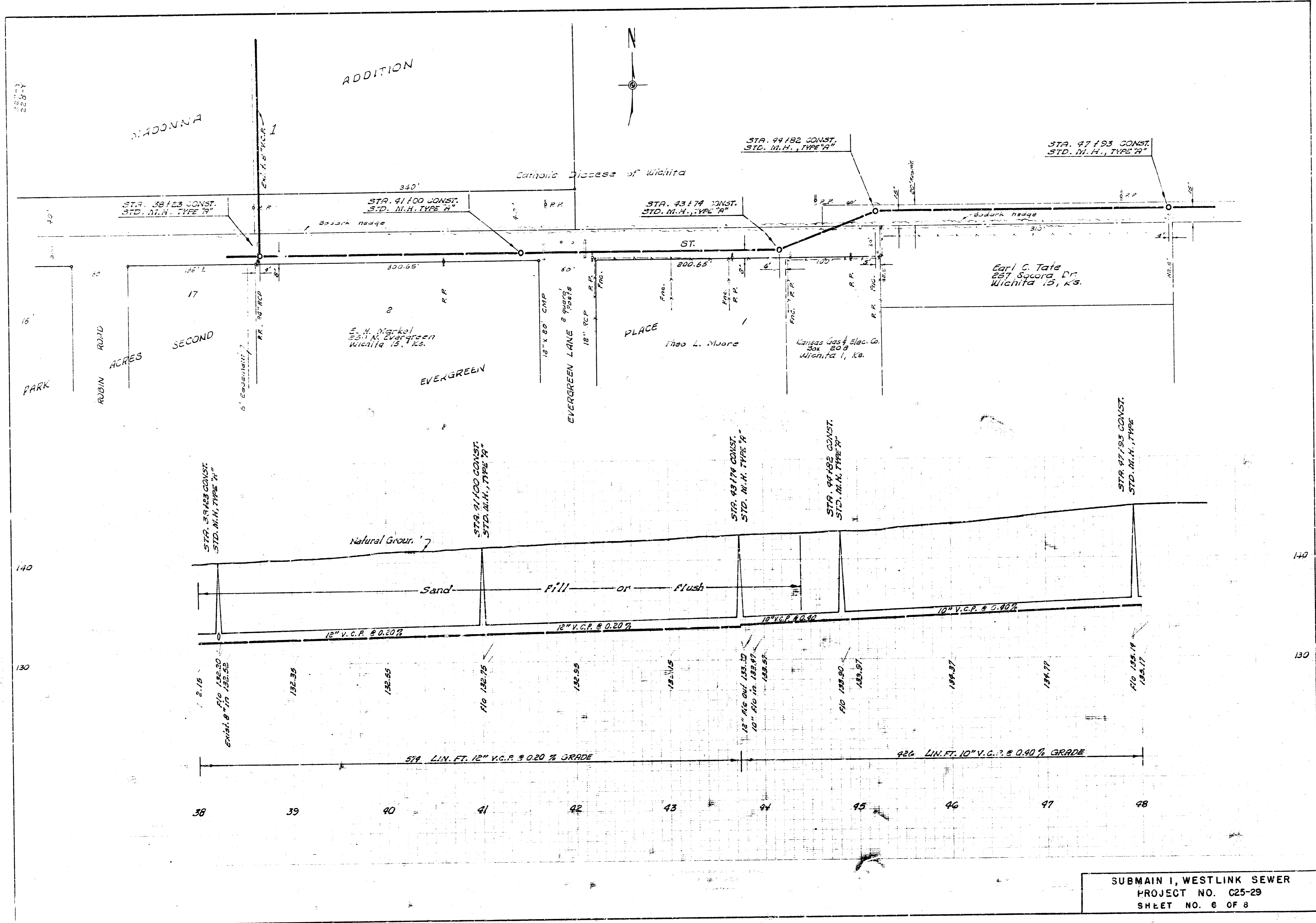


B. M. 138.91 "a" on S.W. cor E. Hubbard Box Culvert 100' S. Rolling Hills Dr. on Tyler Rd.

N.W. 1/4 Sec. 21, Twp 27 S., R. 1 W.



SUBMAIN I, WESTLINK SEWER
 PROJECT NO. C25-29
 SHEET NO. 5 OF 8



SUBMAIN I, WESTLINK SEWER
 PROJECT NO. C25-29
 SHEET NO. 6 OF 8

