

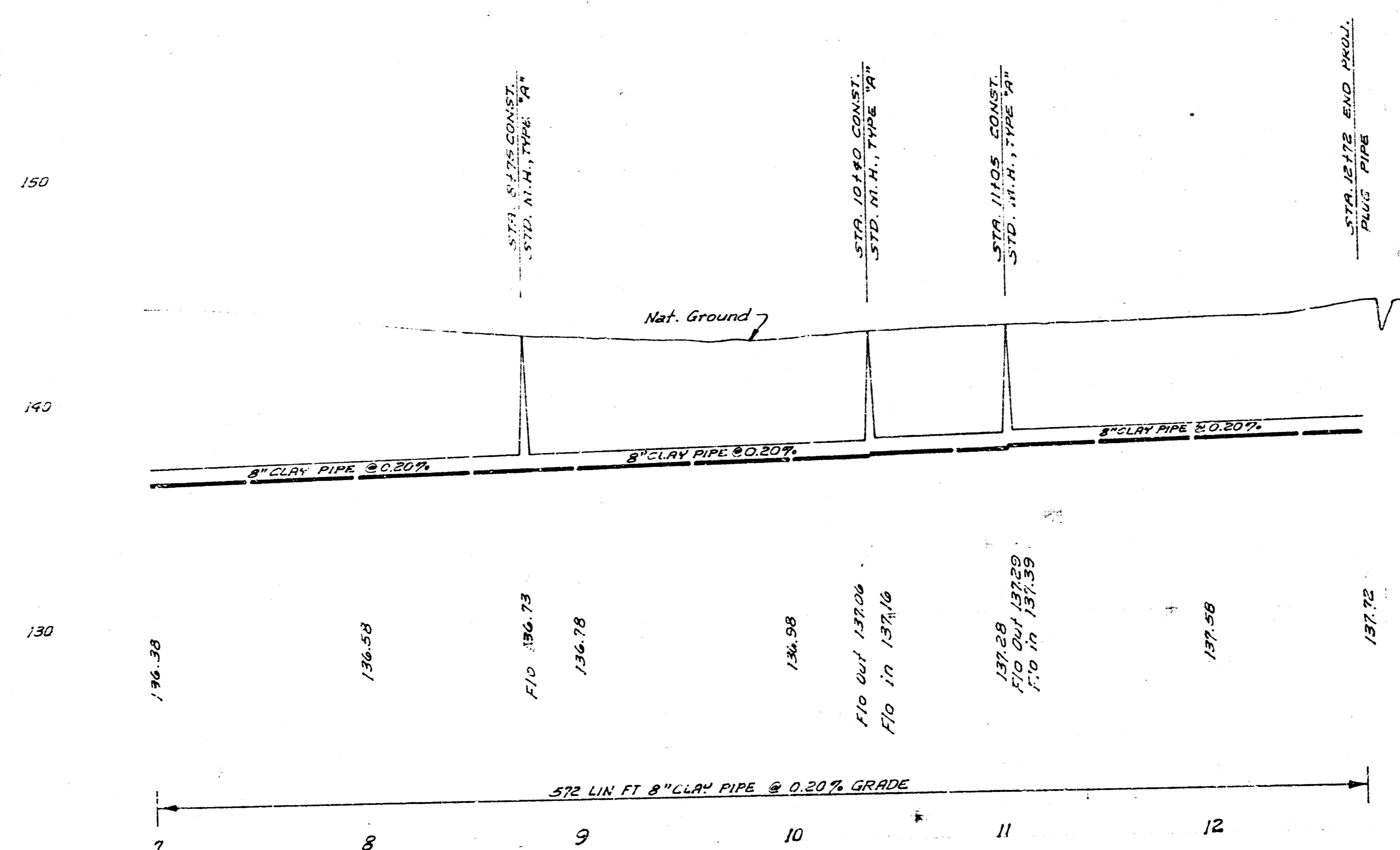
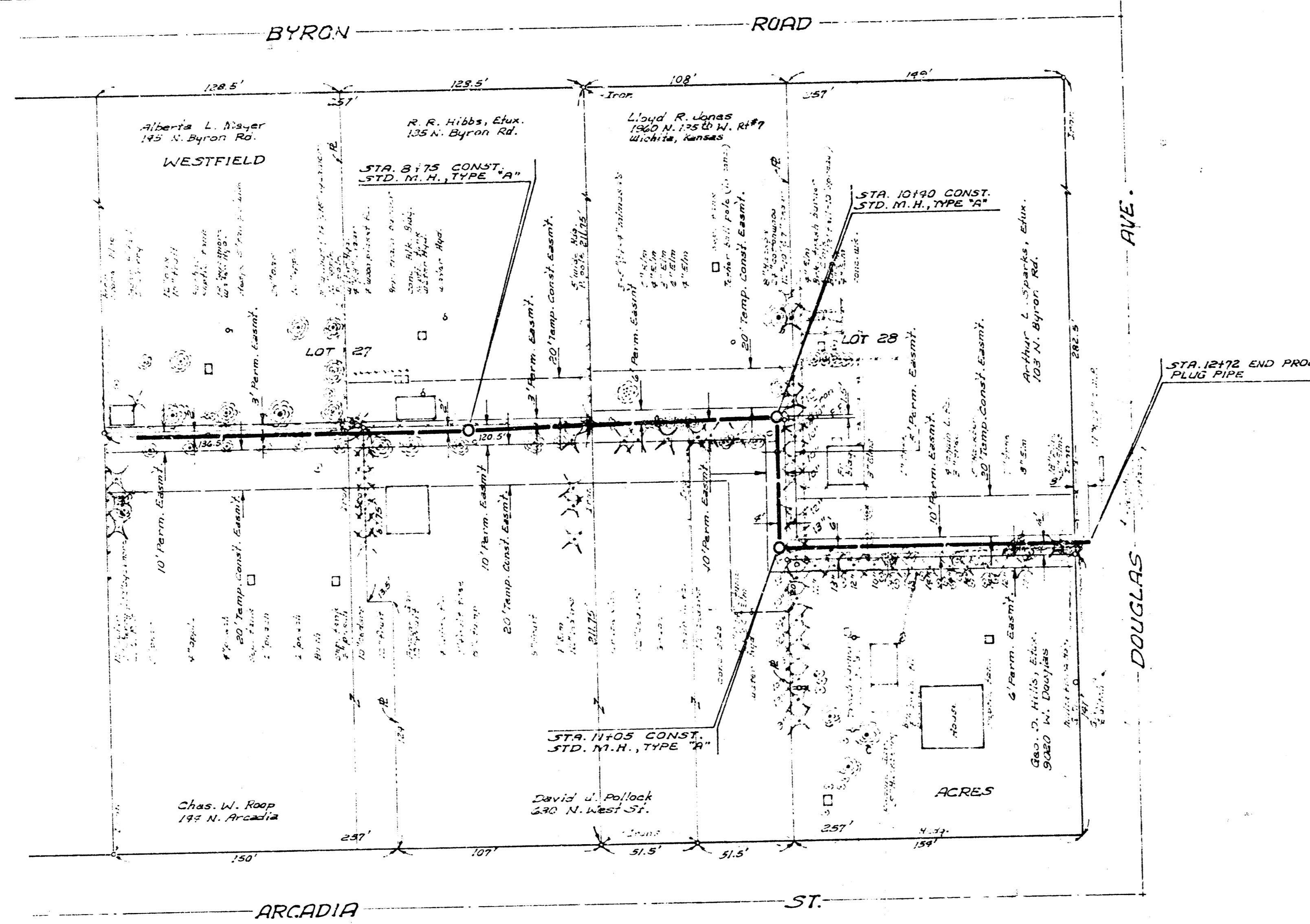
B.M. 140.72 R.R. Spike W. face of 1 1/2 pole E. side Byron Rd. Set. No. 1170 E 156 N. Byron Rd.
 B.M. 144.135 R.R. Spike S. face of pole N. side Douglas 1/2 blk. W. of Taylor Rd.

NOTE :
 Contractor to replace all fences
 Cost of temp relocation of 4" steel irrigation pipeline to be incidental to the project.
 Cost of grass vine removal to be incidental to the project.

Plan Scale 1"=40'
 Profile Scale 1"=40' Hor.
 1"=4' Vert.

LAT. 13, SUB. 1, WESTLINK SEWER
 CITY OF WICHITA, KANSAS
 B.E. SMITH, CITY ENGINEER
 PROJ. NO. DBK 570021
 DATE: DEC. 1971

1/2



2/2

LAT. 13, SUB. 1, WESTLINK SEWER
 PROJ. NO. DBKL570021