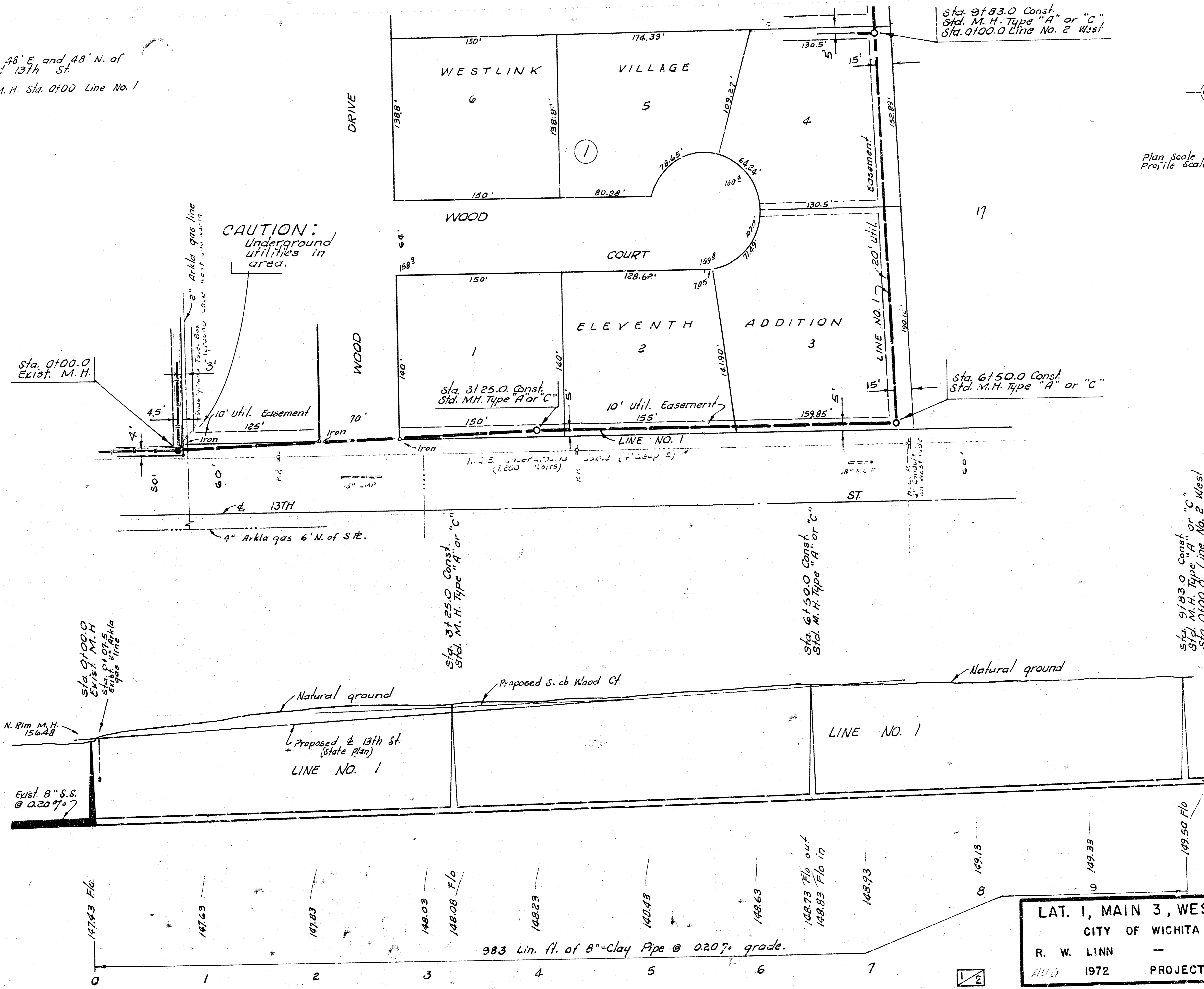


B. M. 167.93 City Std. 48' E. and 48' N. of
 E. of 74th Rd & 13th St.
 T. P. 156.48 N. Rim M.H. Sta. 0100 Line No. 1

A.R.W.
J.R.W.
82



Sta. 9183.0 Const.
 Std. M.H. Type "A" or "C"
 Sta. 0100.0 Line No. 2 West

CAUTION:
 Underground
 utilities in
 area.

Sta. 0100.0
 Exist. M.H.

Sta. 3125.0 Const.
 Std. M.H. Type "A" or "C"

Sta. 6150.0 Const.
 Std. M.H. Type "A" or "C"

Plan Scale 1" = 40' Horiz.
 Profile Scale 1" = 40' Vert.

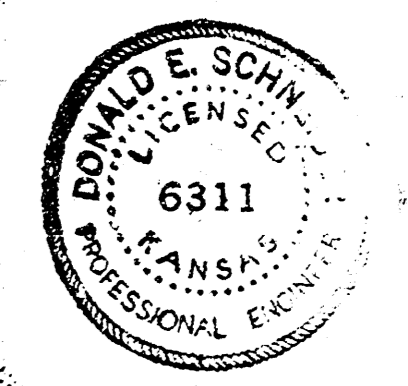
Sta. 9183.0 Const.
 Std. M.H. Type "A" or "C"
 Sta. 0100.0 Line No. 2 West

Sta. 0100.0
 Exist. M.H.
 Sta. 0107.5
 Exist. 4" Arkla
 gas line

Sta. 3125.0 Const.
 Std. M.H. Type "A" or "C"

Sta. 6150.0 Const.
 Std. M.H. Type "A" or "C"

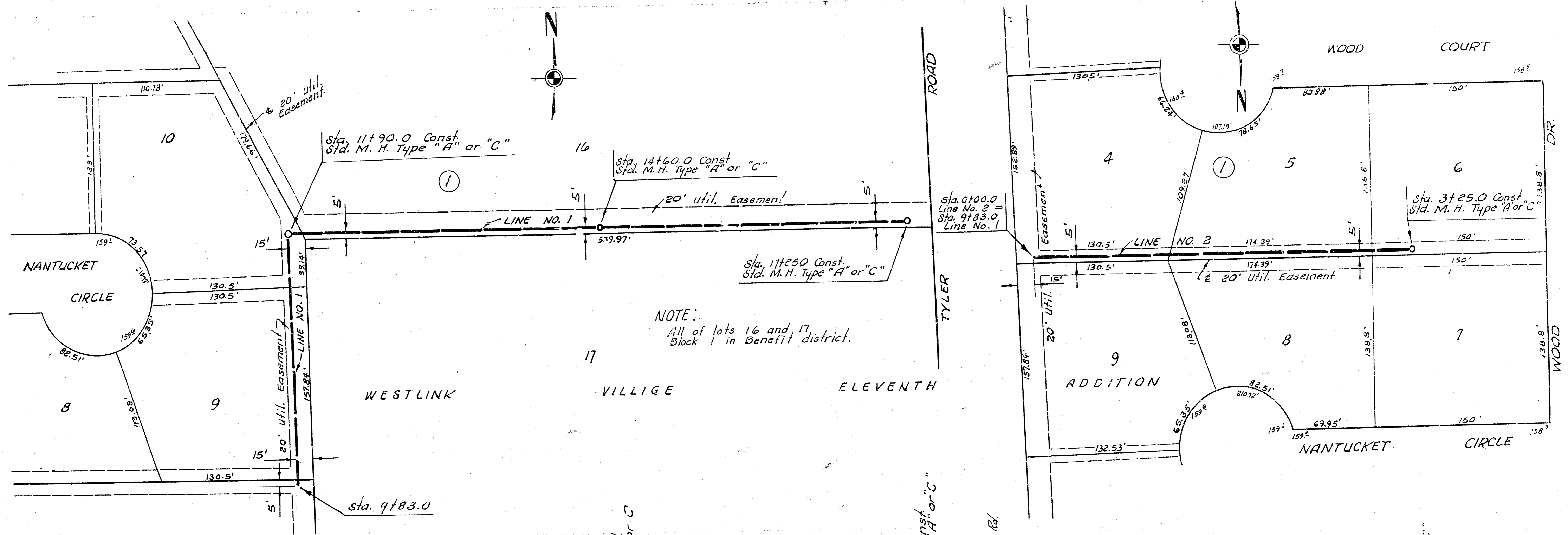
N. Rim M.H.
 156.48
 Exist. 8" S.S.
 @ 0.207%



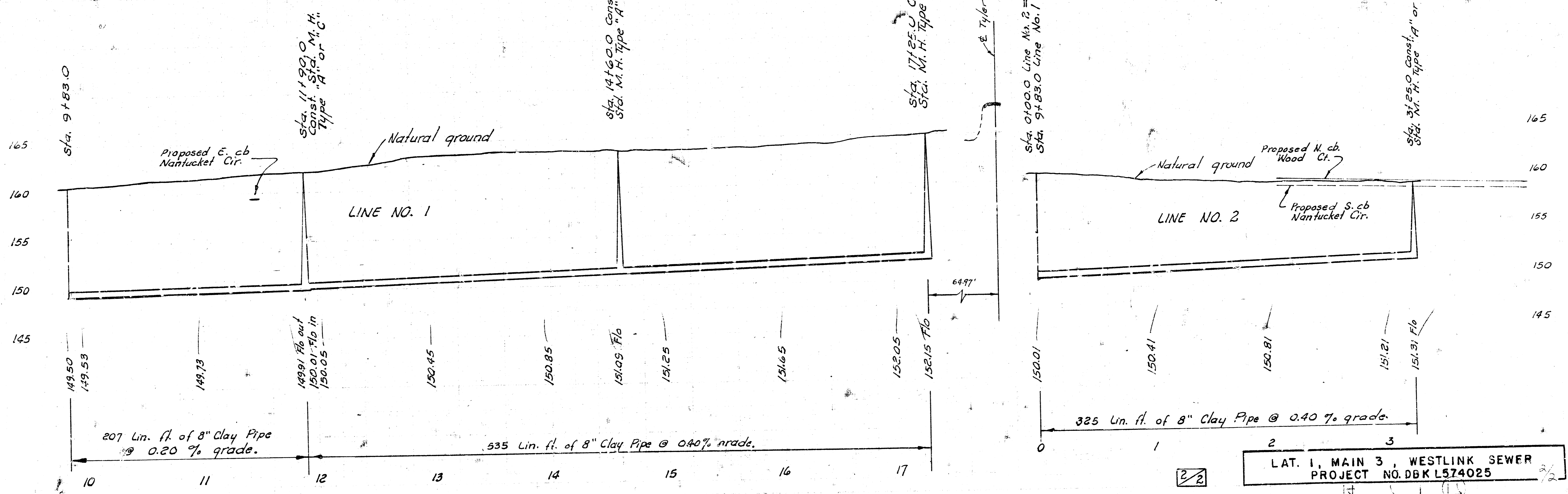
LAT. 1, MAIN 3, WESTLINK SEWER
 CITY OF WICHITA, KANSAS
 R. W. LINN — CITY ENGINEER
 AUG 1972 PROJECT NO. DBK1574025

983 Lin. Ft. of 8" Clay Pipe @ 0.207% grade.

147.93 F/G
 147.63
 147.83
 148.03
 148.08 F/G
 148.23
 148.43
 148.63
 148.73 F/G out
 148.83 F/G in
 148.93
 149.13
 149.33
 149.50 F/G



NOTE:
All of lots 16 and 17
Block 1 in Benefit district.



LAT. 1, MAIN 3, WESTLINK SEWER PROJECT NO. DBK L574025