

JAN 20 1956

Notes:  
Inside walls and top of manhole structures to be lined with plastic lining as shown.  
No lining required in concrete supports of manhole structures or brick curbs.  
Pipe enlarging or leaving original size shall be encased with concrete as shown on M.H. B sheet 22.  
Reinforce each pipe opening with 4 extra #5 bars in each face, spaced as shown in Sect. 2 of this sheet.

No.	Date	Revision	By	Chk'd	App'd
1	1/20/56	Reinforcing Detail for 42" R.C.P.	RLM	W.P.S.	W.P.S.

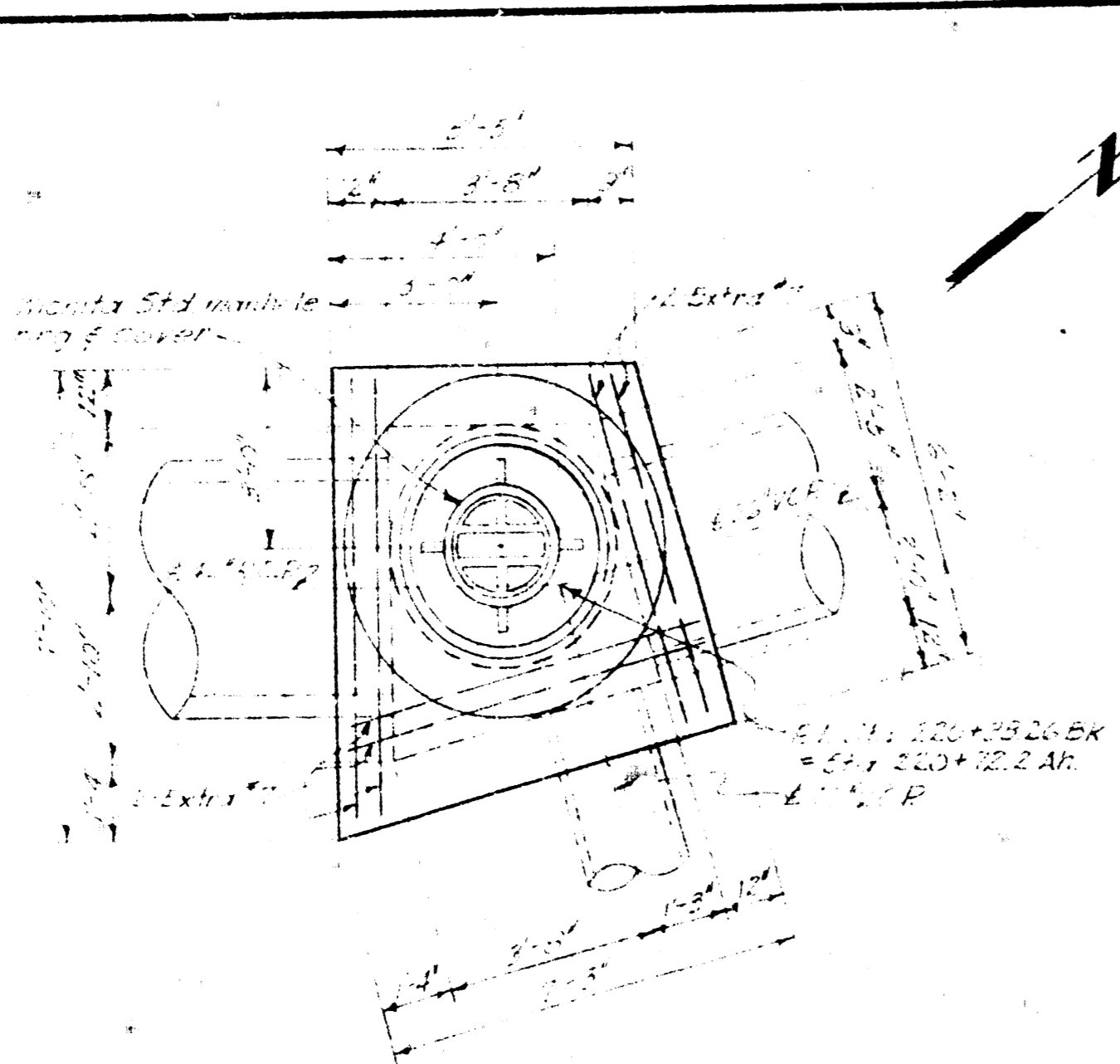
**WICHITA, KANSAS**  
ALTERING, REPAIRING, OR RECONSTRUCTING THE  
WAR INDUSTRIES SEWER

MANHOLE O, R.C.P. REINFORCING DETAIL  
CHANNEL CHANGE

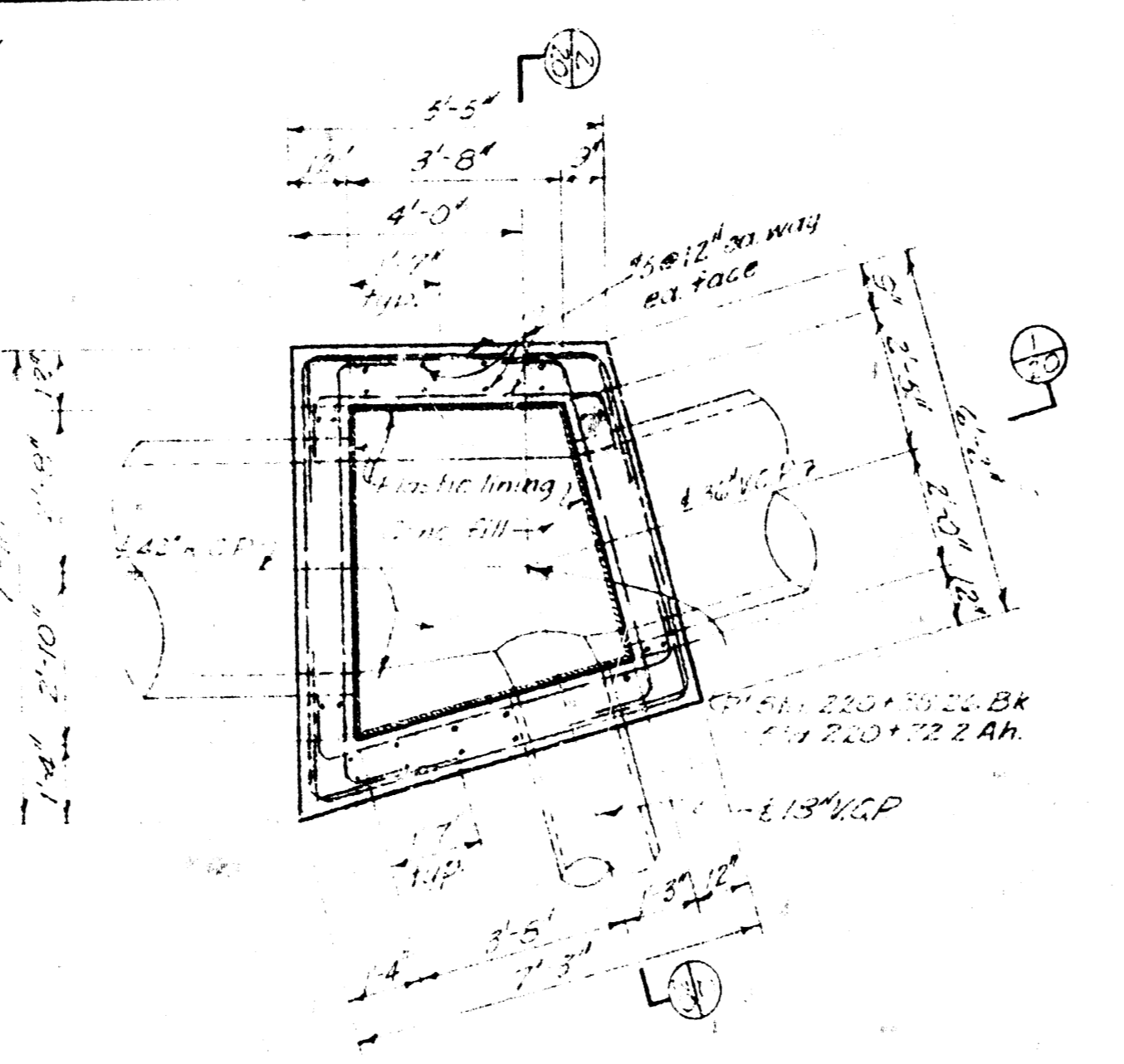
BLACK & VEATCH  
CONSULTING ENGINEERS, KANSAS CITY, MO.

DESIGNED BY RLM	RES	CHECKED BY RES	DATE 1/20/56	SHEET 20 OF 20
DETAILED BY RLM	RES	APPROVED BY	DATE	

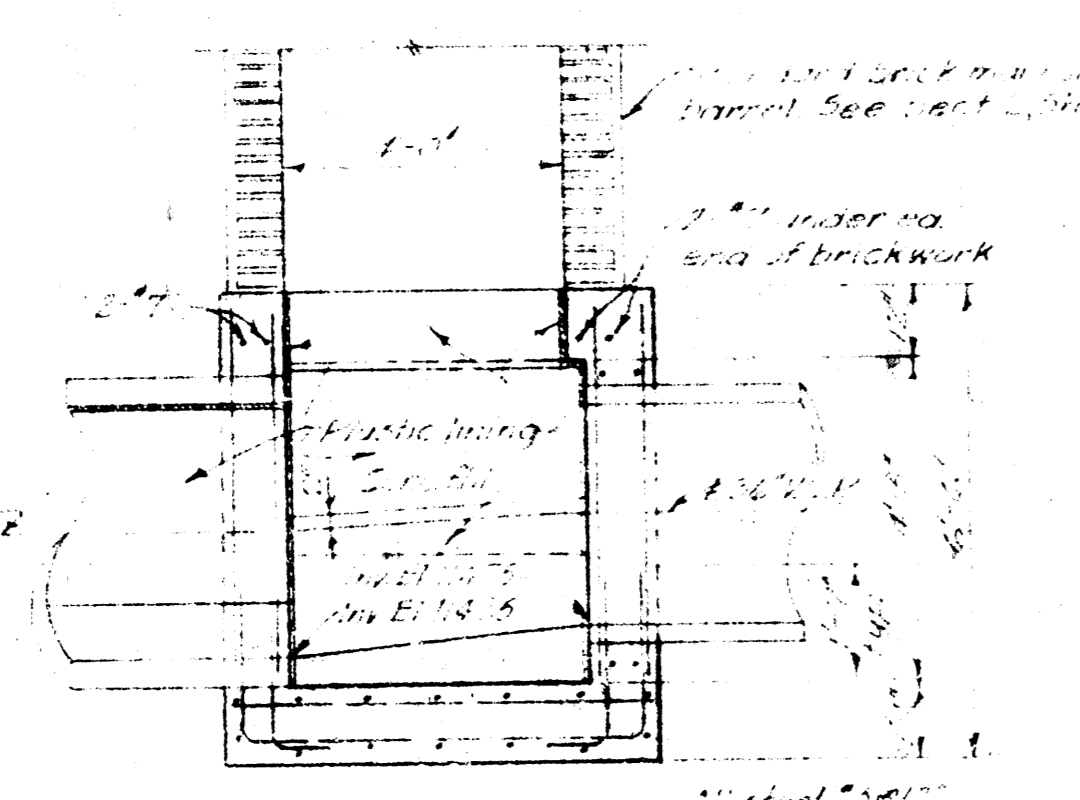
Revised  
W.P.S.  
@ Orme &  
Mansfield



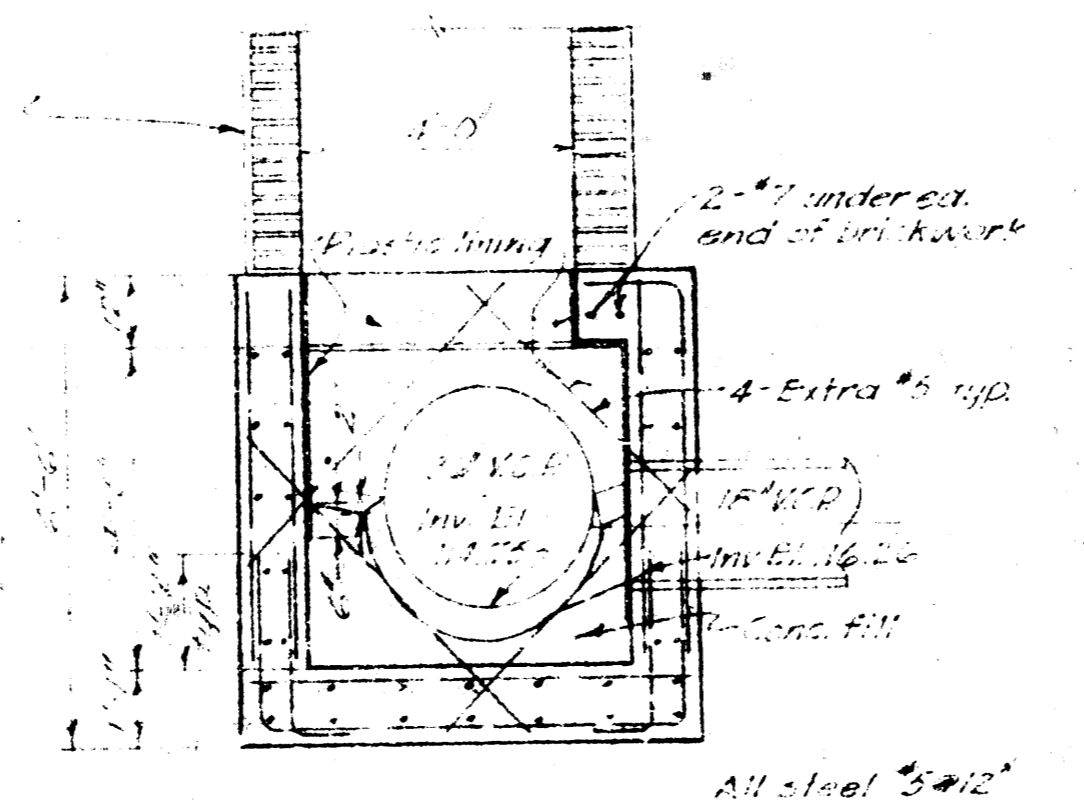
PLAN - MANHOLE O  
Scale 1" = 4'-0"  
See Sheet 9



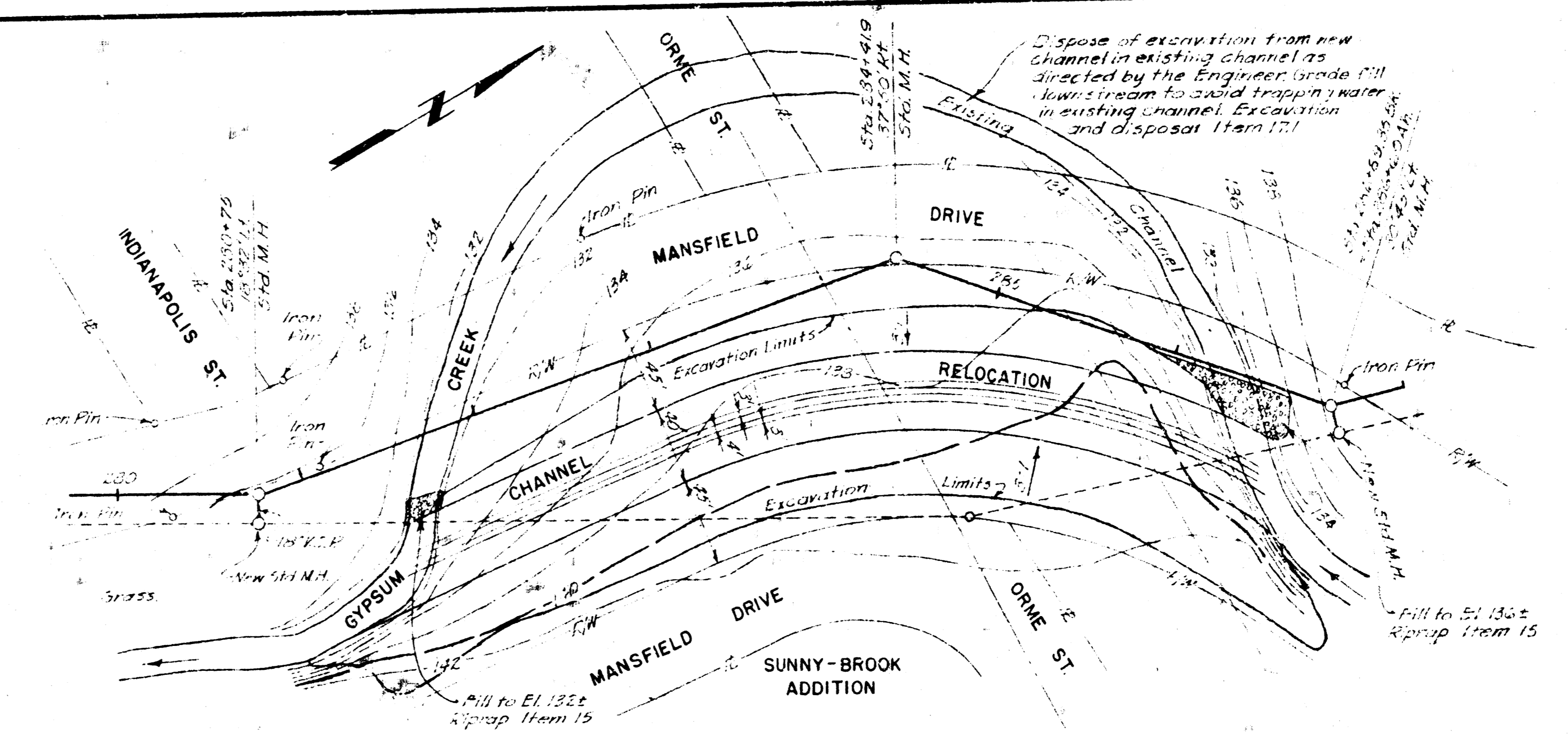
SECTIONAL PLAN  
Scale 1" = 4'-0"



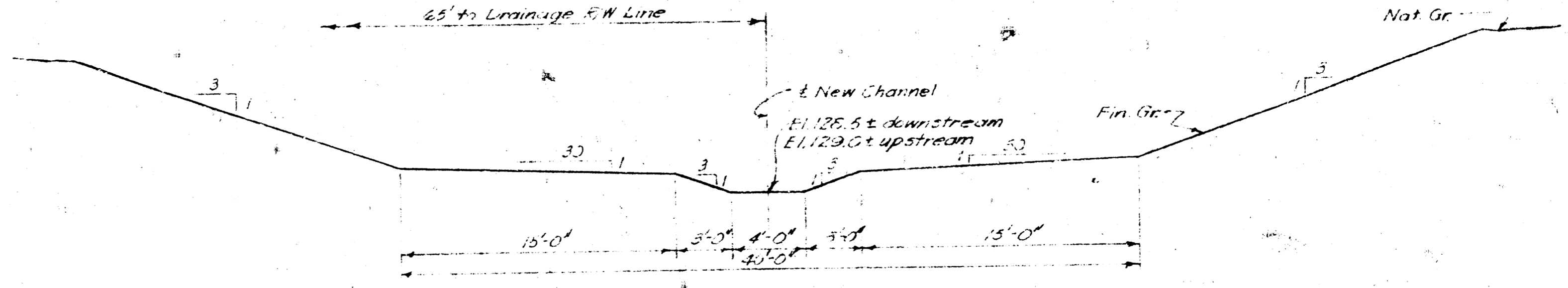
SECTION 1  
Scale 1" = 4'-0"  
See This Sheet



SECTION 2  
Scale 1" = 4'-0"  
See This Sheet

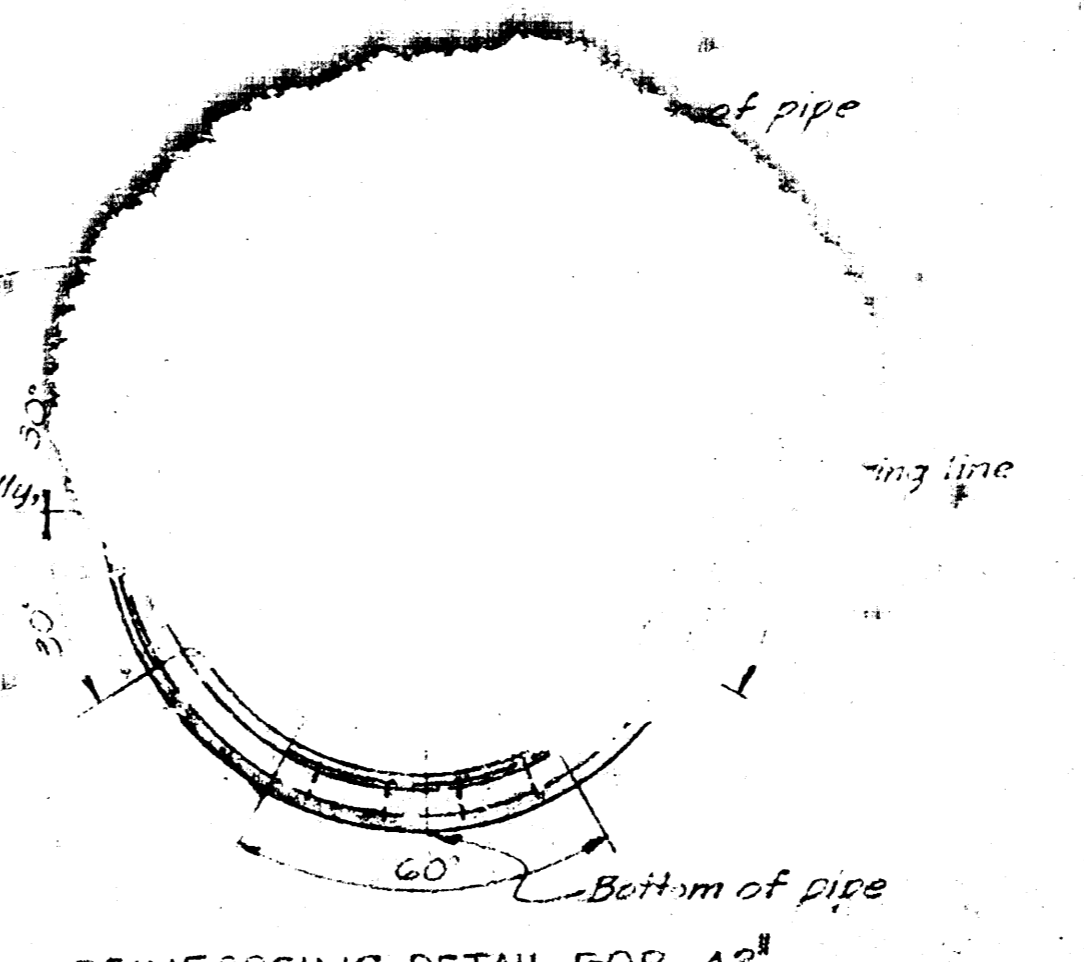


PLAN  
CHANNEL CHANGE  
Scale 1" = 50'-0"  
See Sheet 11



TYPICAL SECTION  
Scale 1" = 5'-0"  
See This Sheet

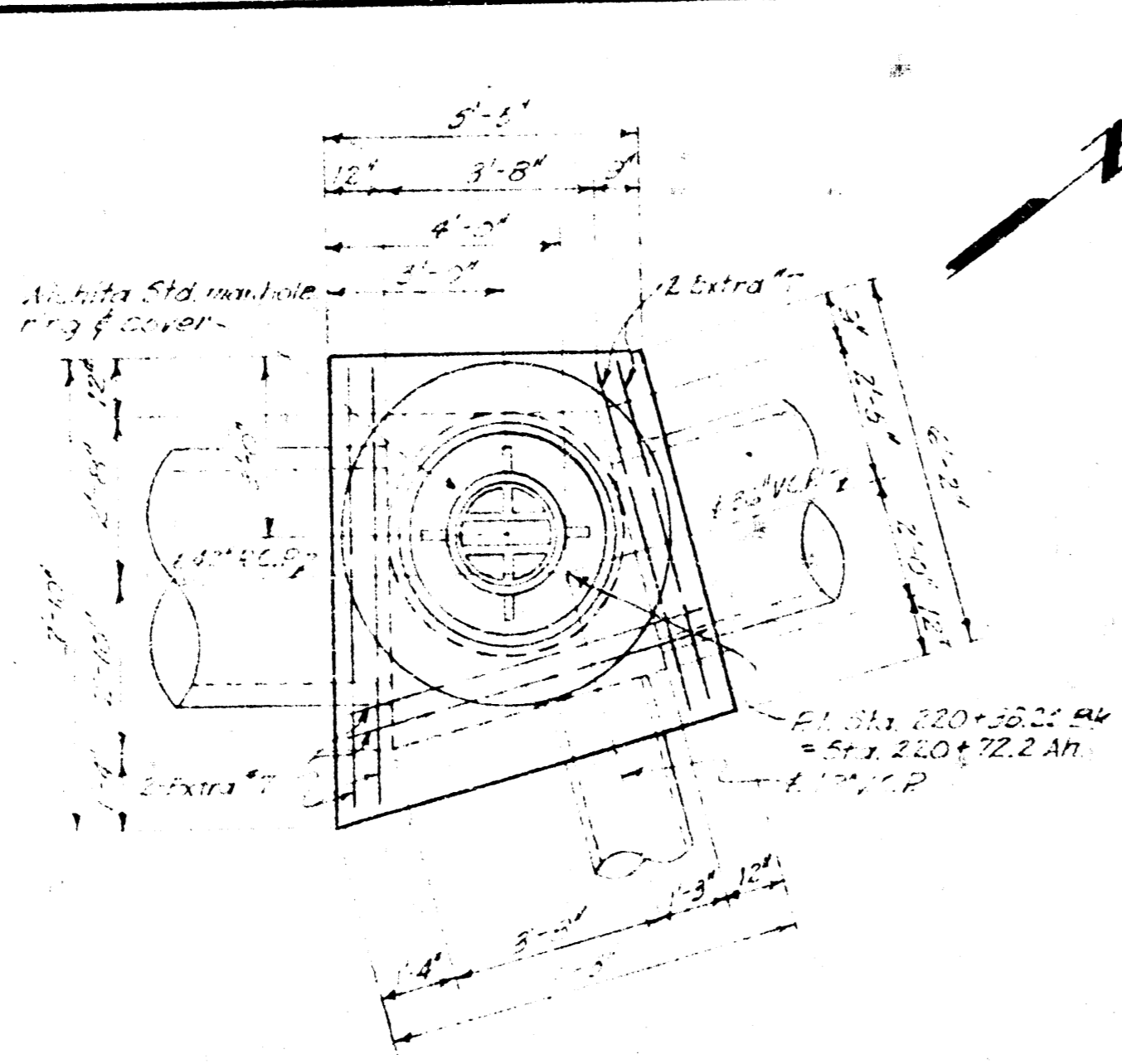
Maximum Steel Reinforcing  
Item 32 Extra Strength Pipe  
Ties minimum 12" c/crs each way -  
not less than 3/4" dia each top and  
bottom per in. of pipe.  
Item 33 Special Design Pipe  
Ties 6" minimum c/crs, circumferentially  
5" c/crs longitudinally, not less than  
4/8" dia each top and bottom each 1/2 in.  
ft of pipe.



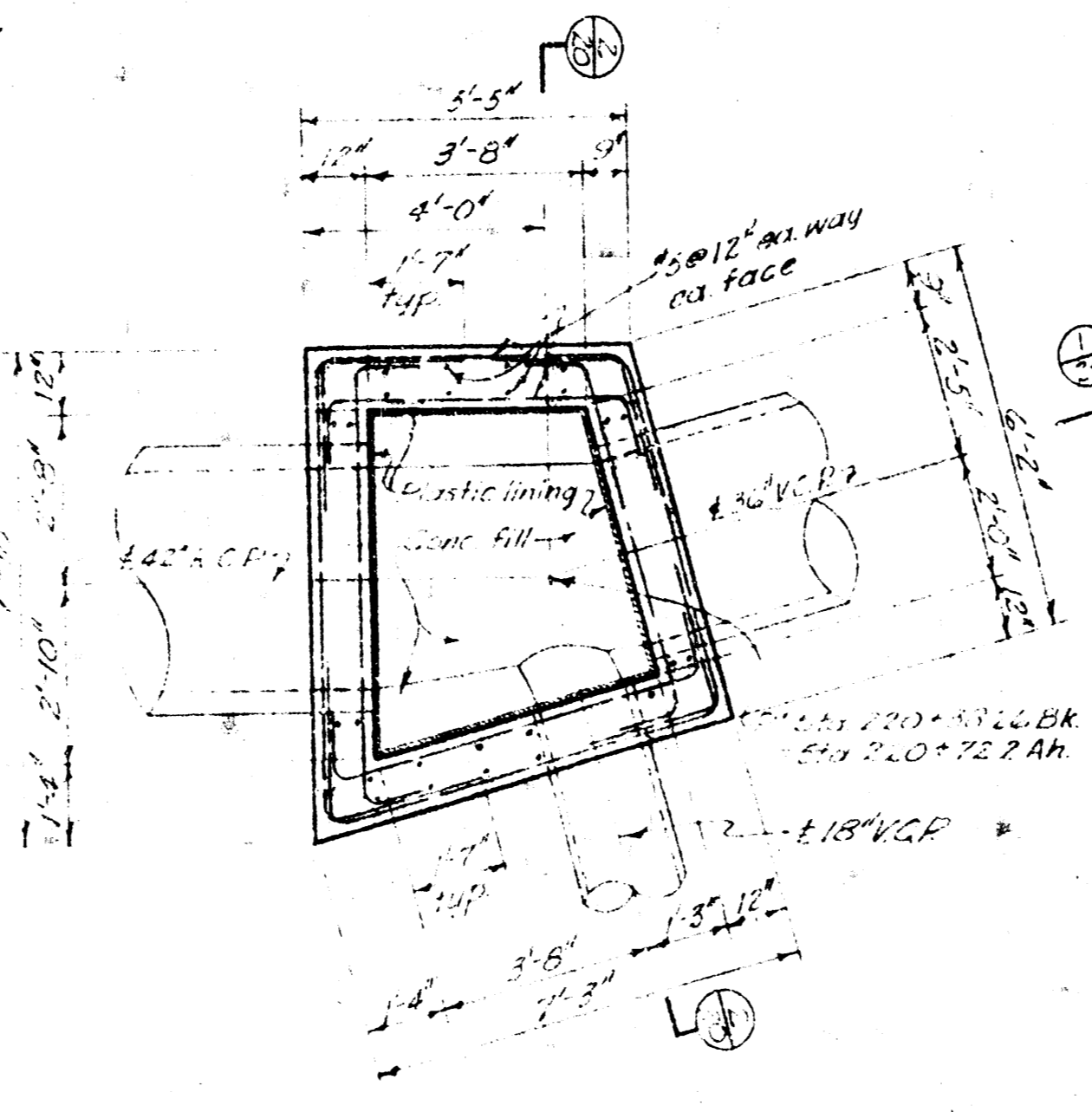
REINFORCING DETAIL FOR 42"  
EXTRA STRENGTH R.C.P.  
SPECIAL DESIGN R.C.P.  
No. 578

Note:  
Inside walls and top of man-hole structures to  
be lined with plastering as shown.  
No lining required on concrete invert or  
of man-hole structures or brick tunnels.  
Pipe entering or leaving man-hole shall be  
encased with concrete to elevation M.H. B. 9.15 of 20.  
Reinforce each pipe opening with 4 extra #5  
bars in each face, placed as shown in Sect. 2  
of this sheet.

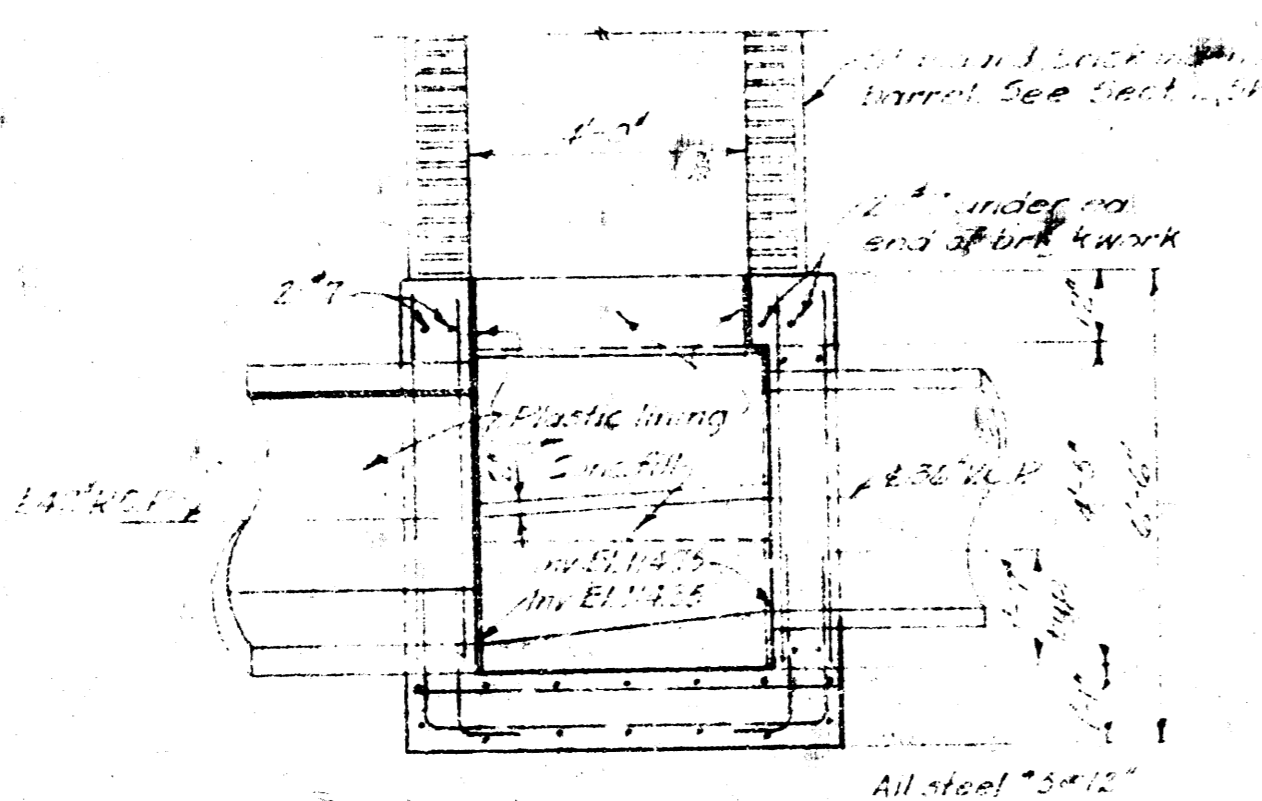
JAN 23 1959	
Revised	By
<b>WICHITA, KANSAS</b>	
ALTERING, REPAIRING, OR RECONSTRUCTING THE WAR INDUSTRIES SEWER	
MANHOLE O, R.C.P. REINFORCING DETAIL CHANNEL CHANGE	
BLACK & VEATCH CONSULTING ENGINEERS, KANSAS CITY, MO.	
DESIGNED BY R.L.M. RES	CHECKED BY R.F.S. RES
DATE 12-29-58	DATE 1-2-59
SHEET 20 OF 20	



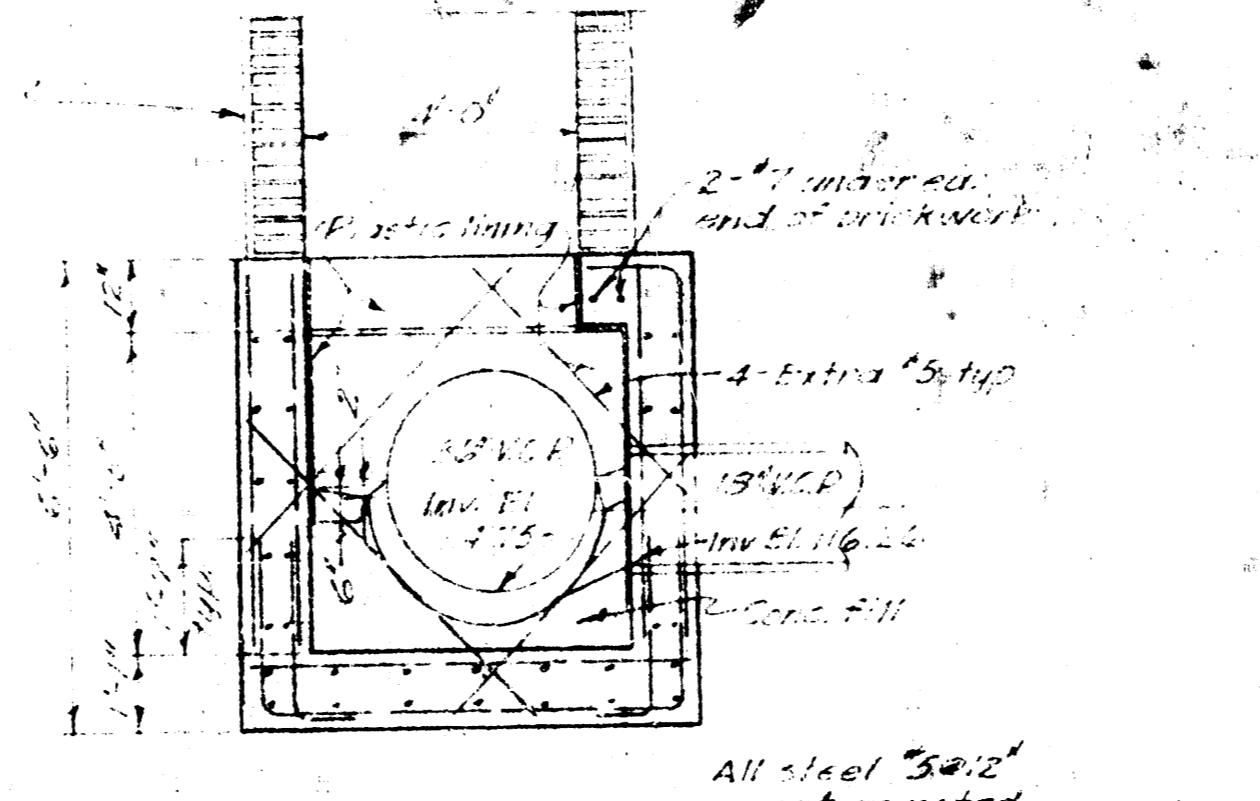
**PLAN - MANHOLE O**  
 ALL STA. 220+00 TO 220+25  
 Scale: 1" = 4'-0"  
 See Sheet 0



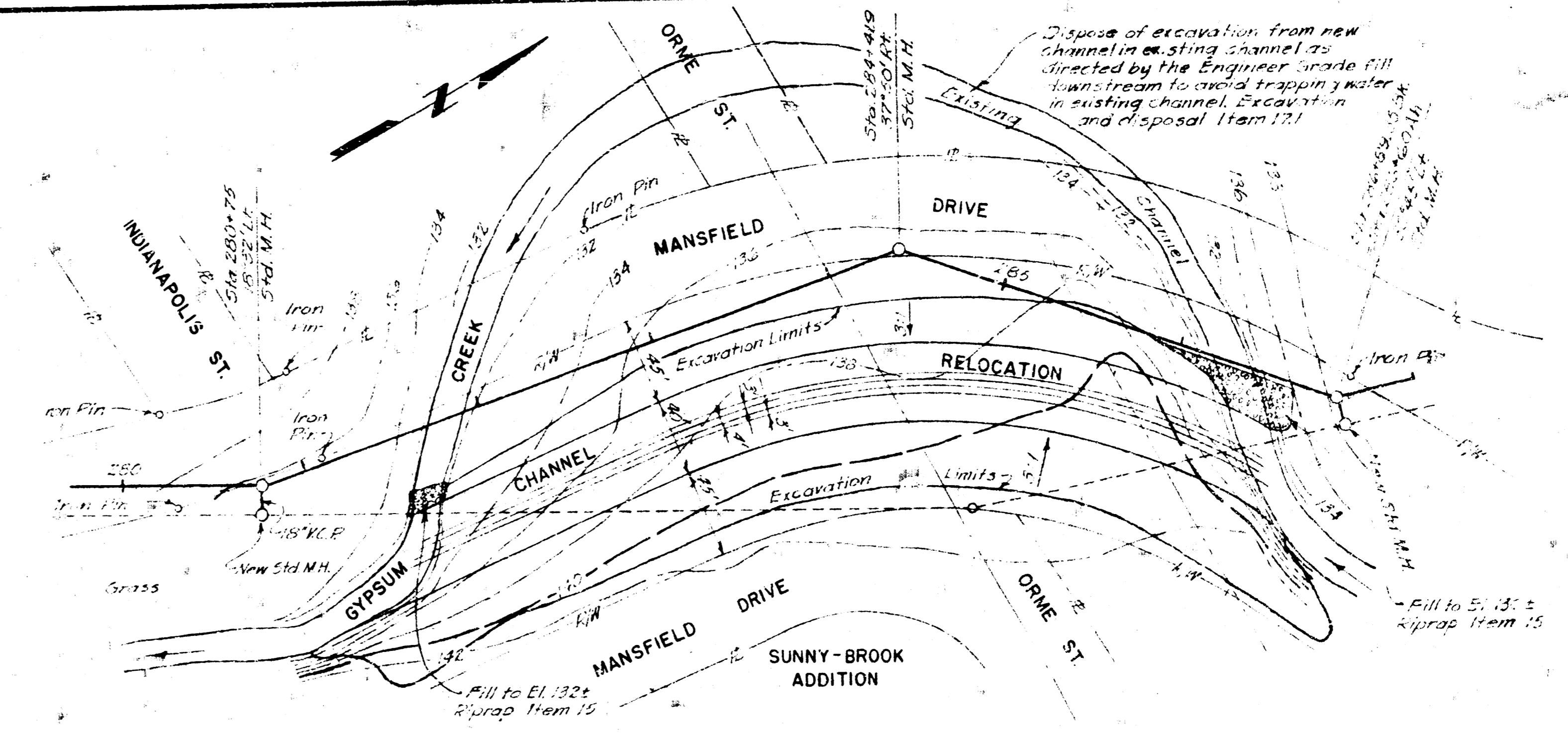
**SECTIONAL PLAN**  
 Scale: 1" = 4'-0"



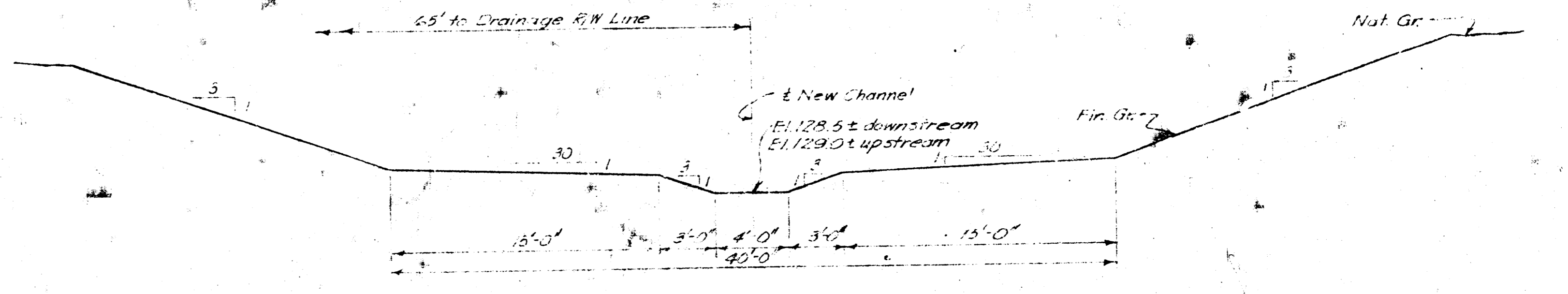
**SECTION 1**  
 See Sheet 0  
 See This Sheet



**SECTION 2**  
 See Sheet 0  
 See This Sheet

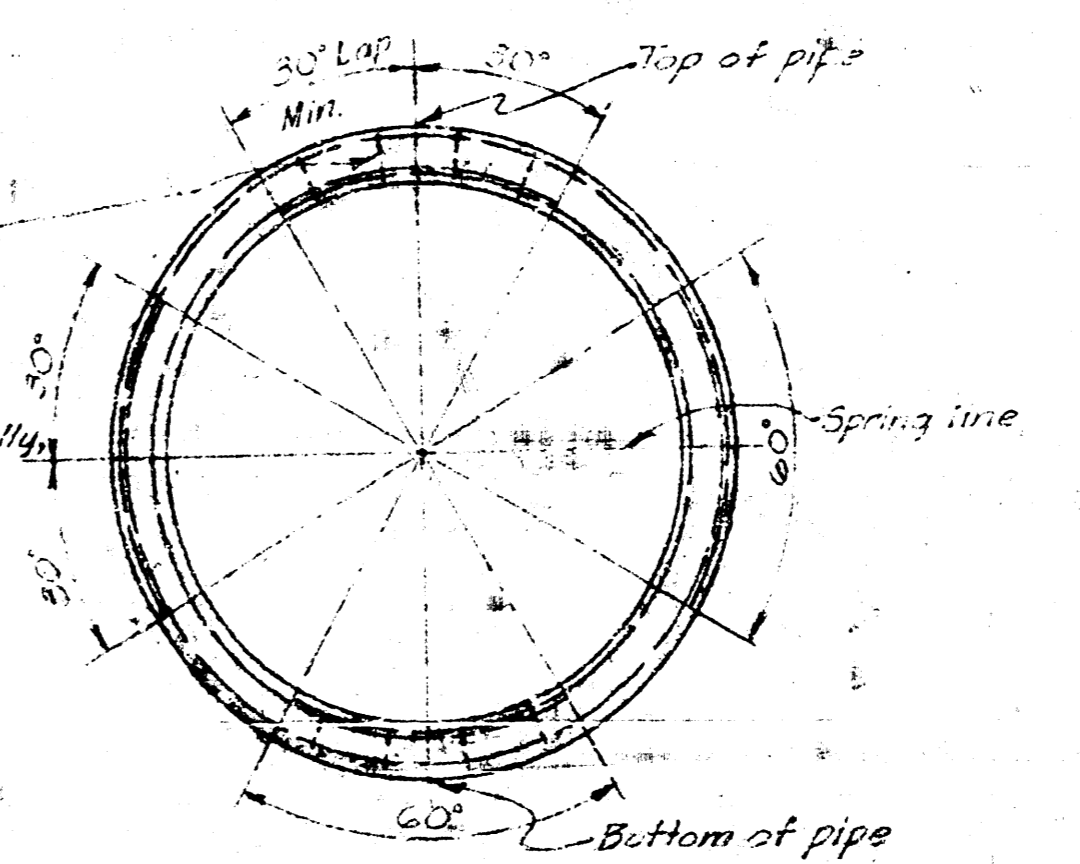


**PLAN CHANNEL CHANGE**  
 Scale: 1" = 50'-0"  
 See Sheet 11



**TYPICAL SECTION**  
 Scale: 1" = 5'-0"  
 See This Sheet

Minimum Tie Steel: 2# 2" joist  
 Item 3.2 Extra Strength Pipe  
 Tie: minimum 12" ctrs. each way -  
 not less than 3 ties each top and  
 bottom per lin. ft. of pipe.  
 Item 3.3 Special Design Pipe  
 Tie: minimum ctrs. circumferentially  
 of ctrs. longitudinally, not less than  
 4 ties each top and bottom each 1/2 lin.  
 ft. of pipe.



**REINFORCING DETAIL FOR 42"  
 EXTRA STRENGTH R.C.P.  
 & SPECIAL DESIGN R.C.P.**  
 No Scale

Note:  
 Ins. to water and top of manhole structures to  
 be lined with plastic lining as shown.  
 No lining required in concrete pipe sections  
 of manhole structures or launch barrels.  
 Pipe entering or leaving a manhole shall be  
 encased with concrete as shown in Plan M.H. B sh. 13 of 20.  
 Reinforce each pipe entering with 4 extra 1/2"  
 bars in each direction as shown in Sect. 2  
 of this sheet.

No. Date		Revision		KLM	DEF	JMB
				By	Chk	Appr
<b>WICHITA, KANSAS</b>						
ALTERING, REPAIRING, OR RECONSTRUCTING THE WAR INDUSTRIES SEWER						
MANHOLE O, R.C.P. REINFORCING DETAIL CHANNEL CHANGE						
BLACK & VEATCH CONSULTING ENGINEERS, KANSAS CITY, MO.						
DESIGNED BY KLM	CHECKED BY R.E.S.	APPROVED BY KLM	DATE 1/25/55			SHEET 20 OF 20

JAN 20 1955