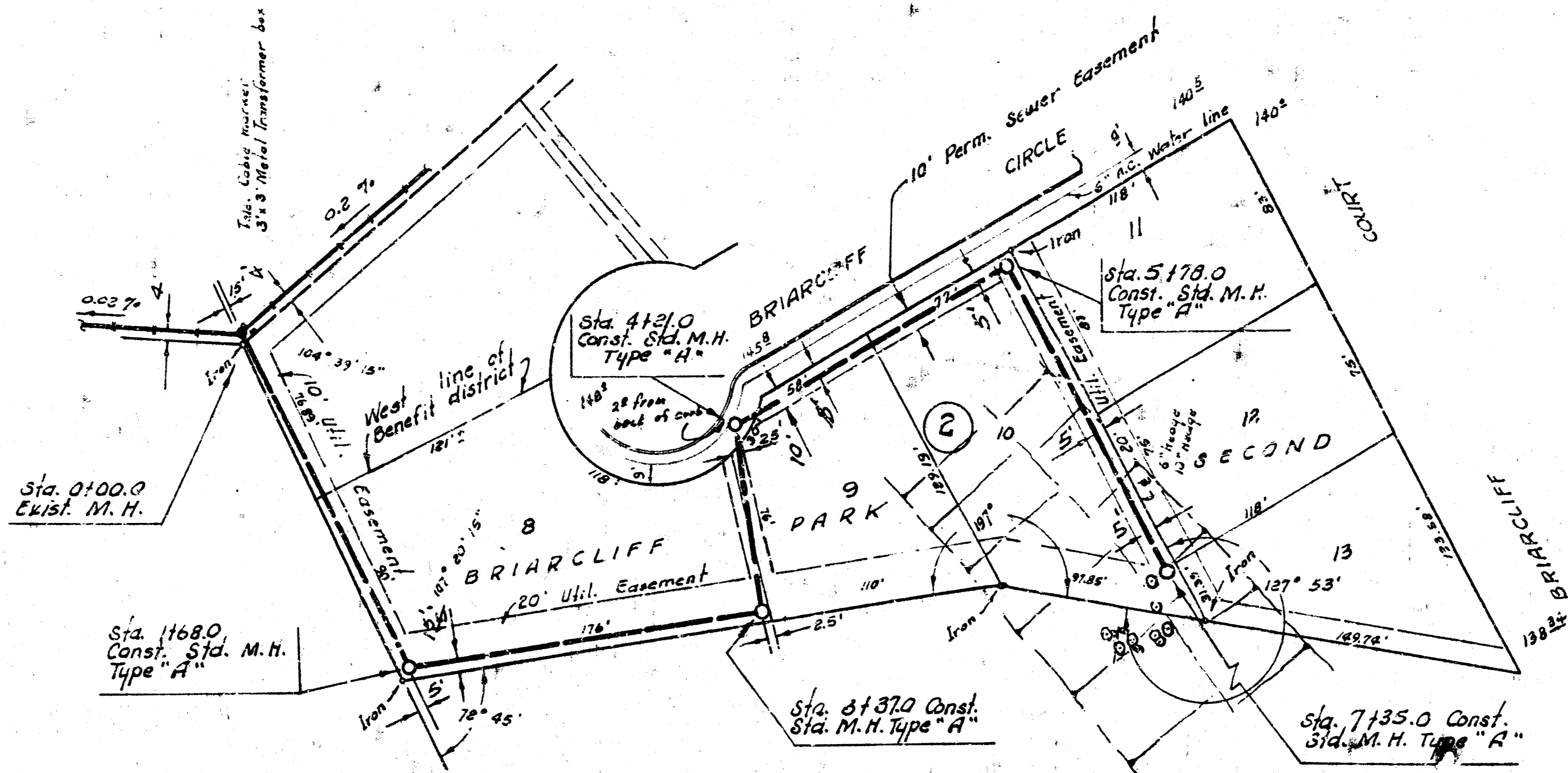
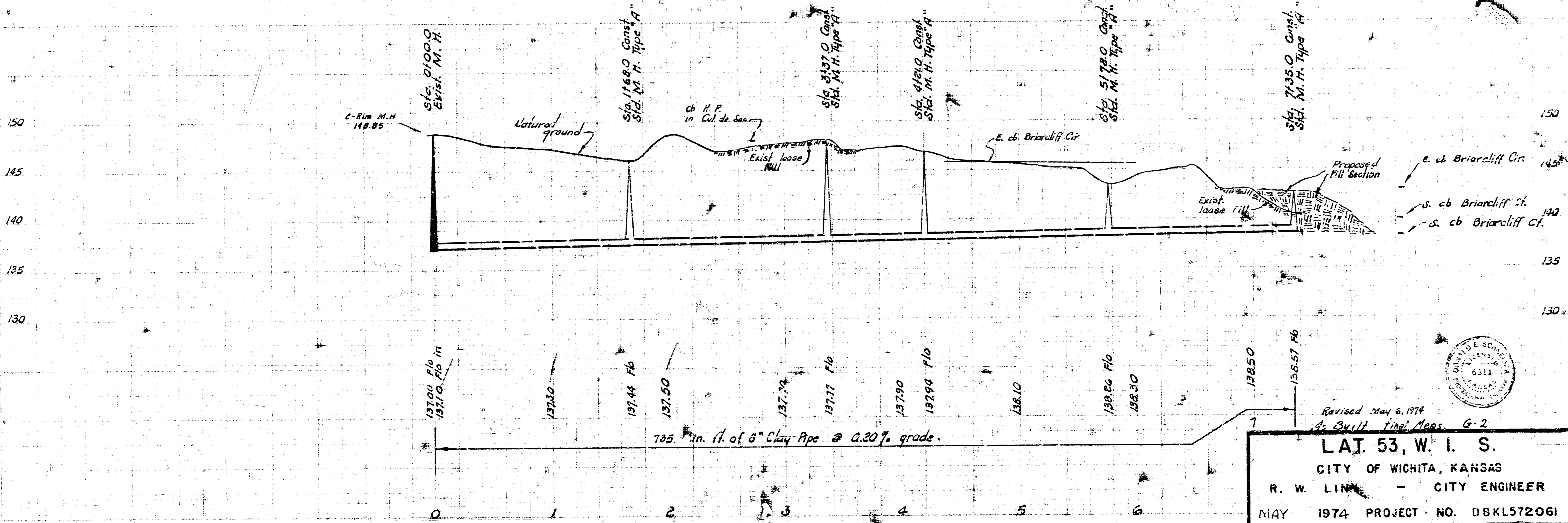


B. M. #1 145.79 "R" in Ritchie So. end Rad.  
 S. E. cor. Zimmerly and Briarcliff Circle.  
 B. M. #2 143.85 E. Rim M.H. Sta 0100



Plan Scale 1" = 40'  
 Profile Scale 1" = 40' Hor Z.  
 1" = 5' Ver F.

NOTE:  
 San. Sewer pipe must  
 have a minimum of  
 30" cover.



Revised May 6, 1974  
 As Built final Meas. G-2

**L.A.J. 53, W. I. S.**  
 CITY OF WICHITA, KANSAS  
 R. W. LIND - CITY ENGINEER  
 MAY 1974 PROJECT NO. DBKL572061