

# LATERAL 67, WAR INDUSTRIES SEWER

PROJECT NO.

468-76-245-81069-000-000-001

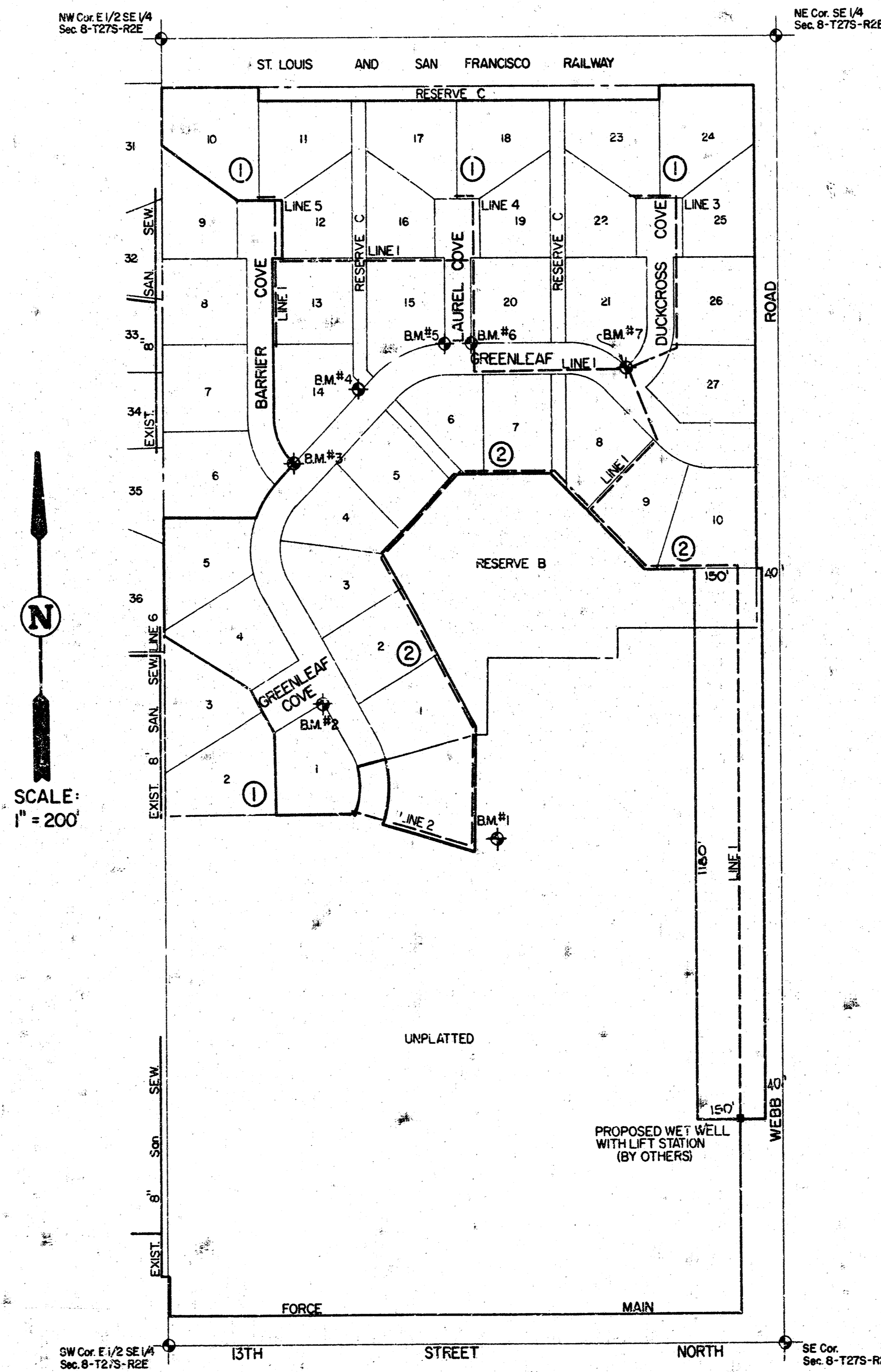
CITY OF WICHITA, KANSAS  
 R. W. BRUGGEMAN, CITY ENGINEER  
 MARCH, 1981  
 FOLIAGE

### LEGEND

- PROPOSED LINE
- EXISTING LINE
- BENEFIT DISTRICT BOUNDARY

NOTE: Risers and additional stubs shall be installed on this project to serve individual lots when ordered by the Field Engineer. Riser construction shall conform to the requirements as shown on Standard Riser Detail Sheet. Locations of the ends of the risers shall be marked by fastening green plastic colored tape to the end of the riser and brought to the ground surface as the excavation is backfilled such that the colored tape will be visible when the project is completed. All risers shall be constructed using S.D.R. 21.5 A.R.S. or P.C.P. Pipe. Elevations of stubs and tops of risers shall be such that will facilitate connection of basement drains when those lots are developed.

- B.M. #1  
3/8" Spike - South of Pond.  
ELEV. = 190.33'
- B.M. #2  
Iron - Northeast Corner of Lot 1, Block 1  
ELEV. = 194.05'
- B.M. #3  
Iron - Southwest Corner of Lot 14, Block 1 @ PC  
ELEV. = 192.77'
- B.M. #4  
3/8" Spike - Southeast Corner of Lot 14, Block 1  
ELEV. = 193.33'
- B.M. #5  
Iron - Southeast Corner of Lot 15, Block 1  
ELEV. = 193.15'
- B.M. #6  
Iron - Southwest Corner of Lot 20, Block 1  
ELEV. = 193.15'
- B.M. #7  
Iron - South Corner of Lot 21, Block 1  
ELEV. = 189.66'

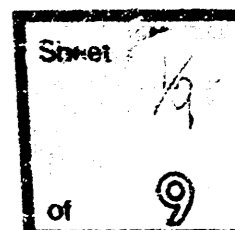


SHEET NO.	DESCRIPTION
1	COVER SHEET
2-5	LINE 1
5-6	LINE 2
7	LINE 3 & 4
8	LINE 5 & 6
9	PLAT

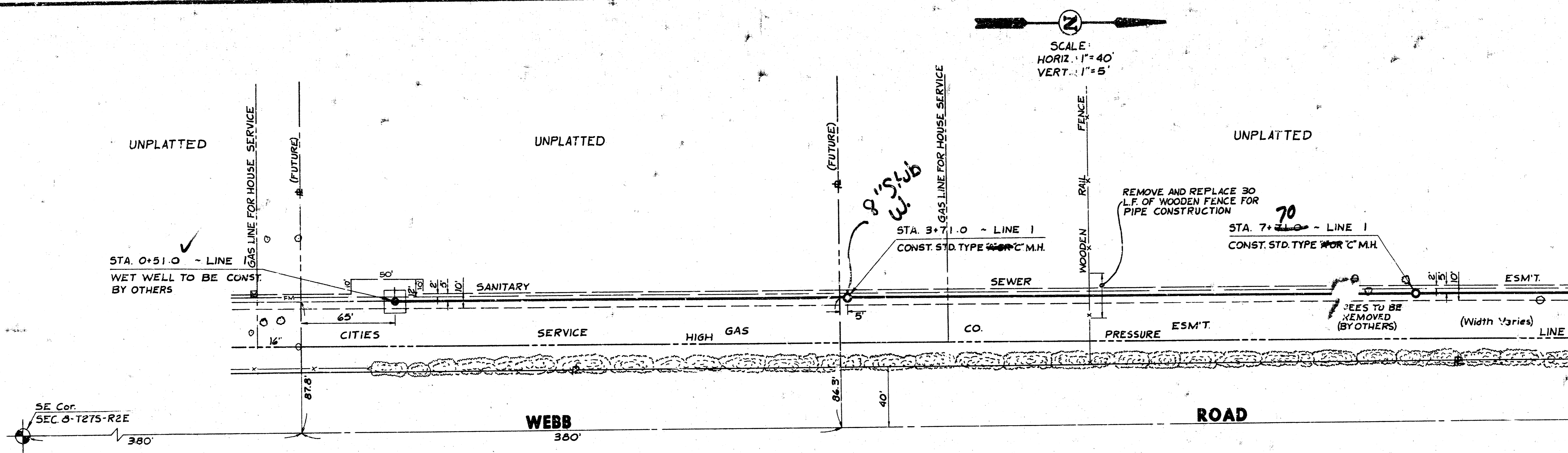
*As Built  
11/81  
AJG*



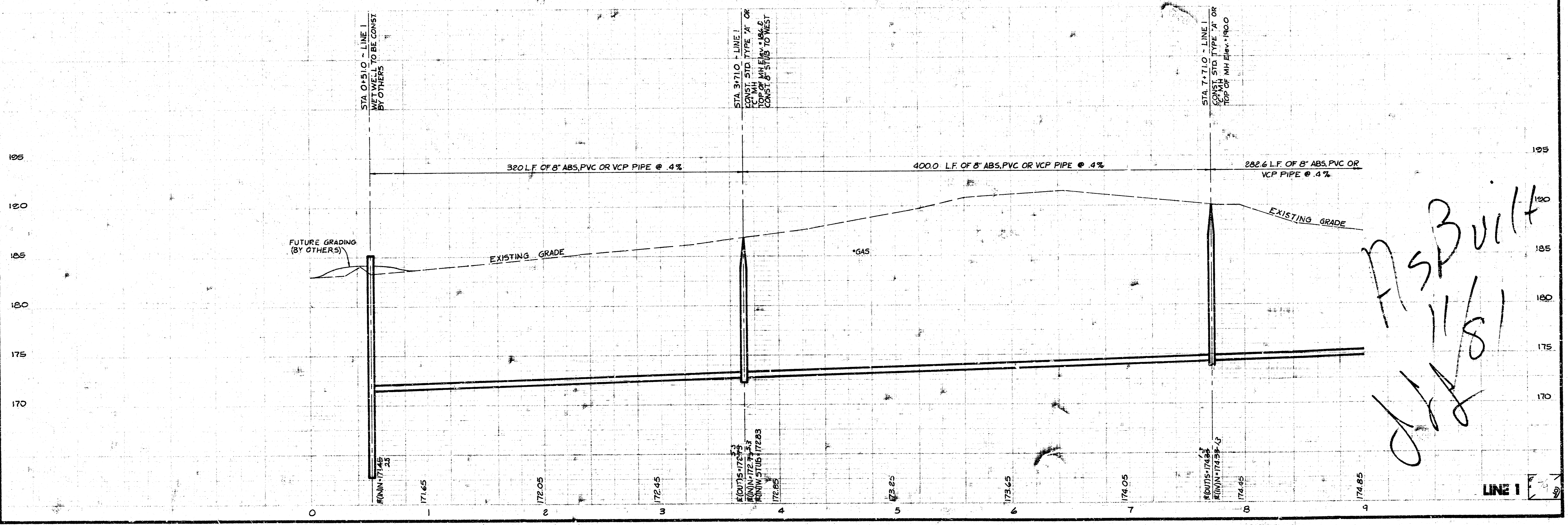
Van Doren Hazard Stallings  
 Architects - Engineers - Planners  
 Topeka - Wichita - Minneapolis - Kansas City



FOLIAGE  
 LATERAL 67, WAR INDUSTRIES SEWER  
 468-75-245-81069-000-000-001



NOTE: AN AGREEMENT HAS BEEN EXECUTED WITH CITIES SERVICE GAS COMPANY WHICH ALLOWS INSTALLATION OF UTILITIES IN THE WEST 8' OF THEIR PIPE-LINE EASEMENT ALONG THE WEST SIDE OF WEBB ROAD. THE AGREEMENT ALSO ALLOWS UTILIZATION OF THE EAST 10' OF THE WEST 18' OF THIS SAME PIPE-LINE EASEMENT FOR OPERATION AND MAINTENANCE OF THE UTILITY INSTALLATION.



*As Built*  
 11/81  
*[Signature]*

FILMED FROM THE BEST

FOLIAGE  
 LATERAL 67, WAR INDUSTRIES SEWER  
 468-76-245-81069-000-000-001

SCALE:  
 HORIZ. 1" = 40'  
 VERT. 1" = 5'

57  
 STA. 15+97.8 - LINE 1  
 STA. 0+00.0 - LINE 2  
 CONST. STD. TYPE 48" C.M.H.

88  
 STA. 13+88.7 - LINE 1  
 CONST. STD. TYPE 48" C.M.H.

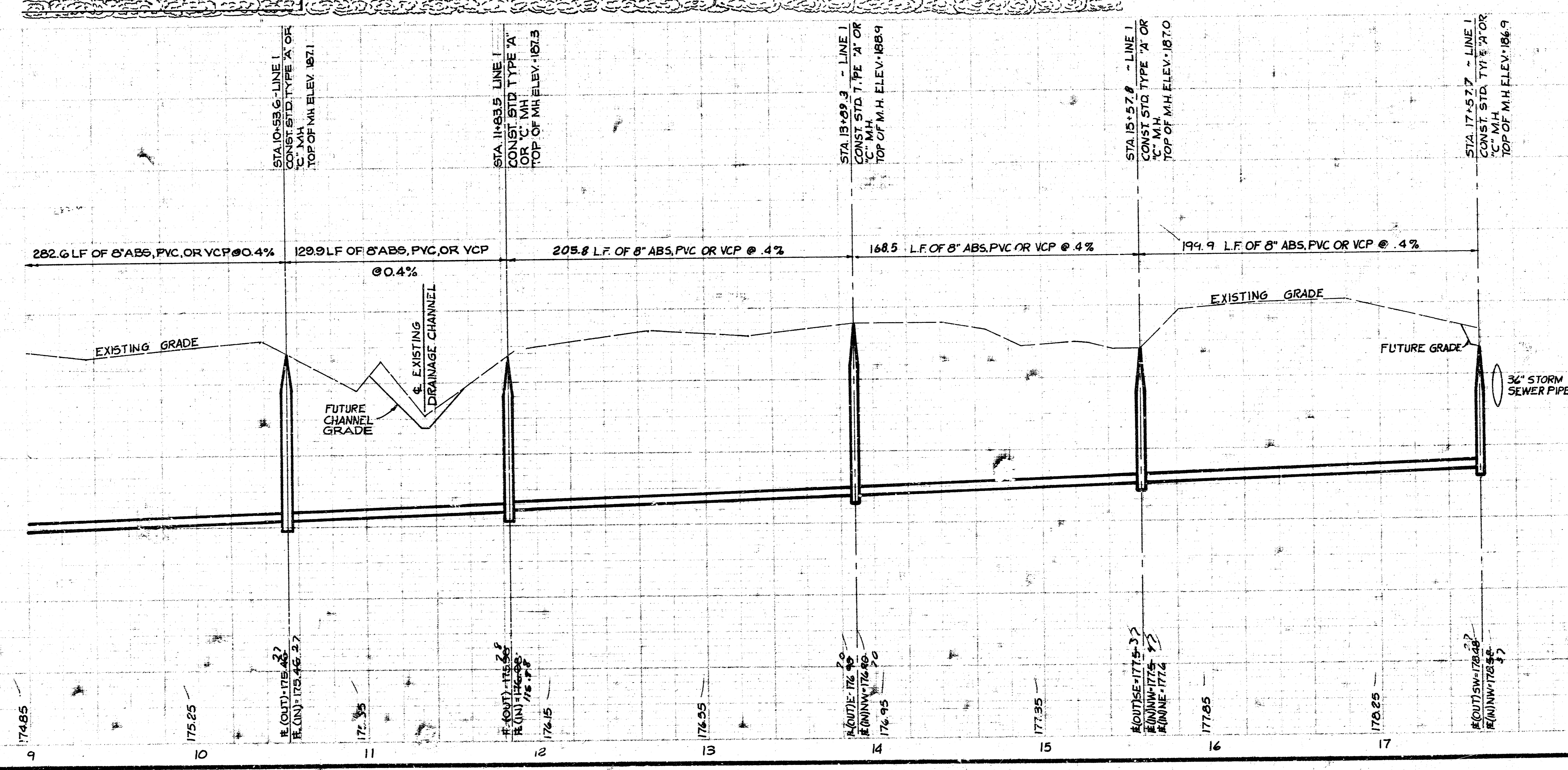
56  
 STA. 17+57.7 - LINE 1  
 CONST. STD. TYPE 48" C.M.H.

UNPLATTED

54  
 STA. 10+55.0 - LINE 1  
 CONST. STD. TYPE 48" C.M.H.

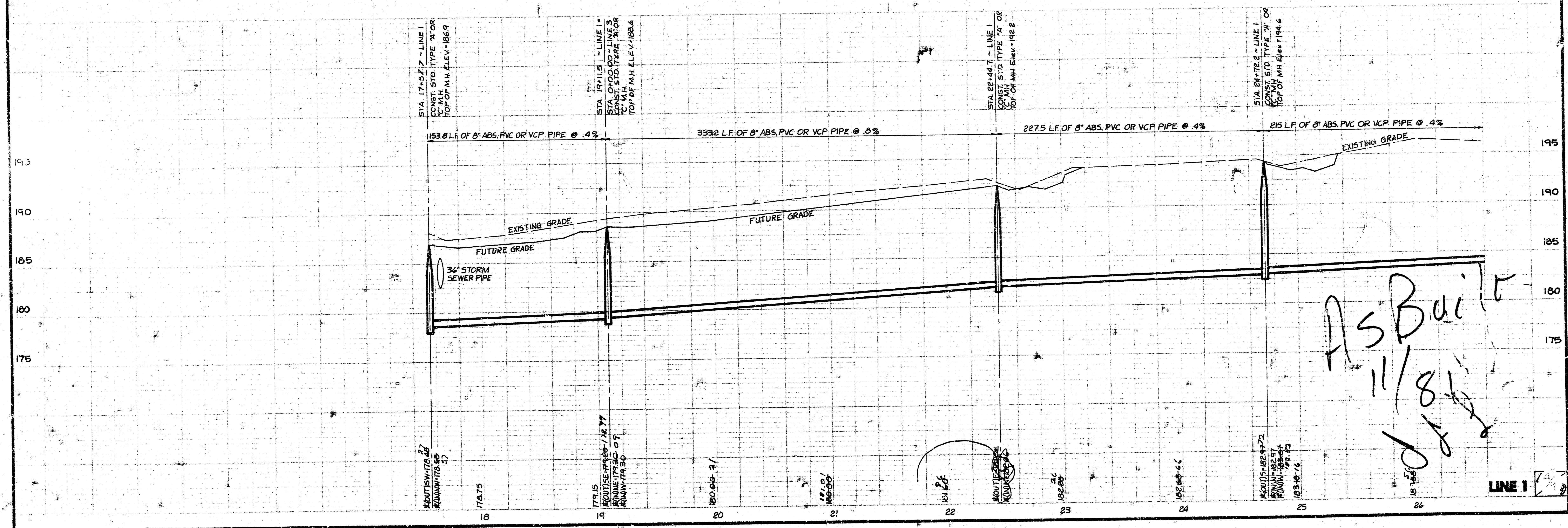
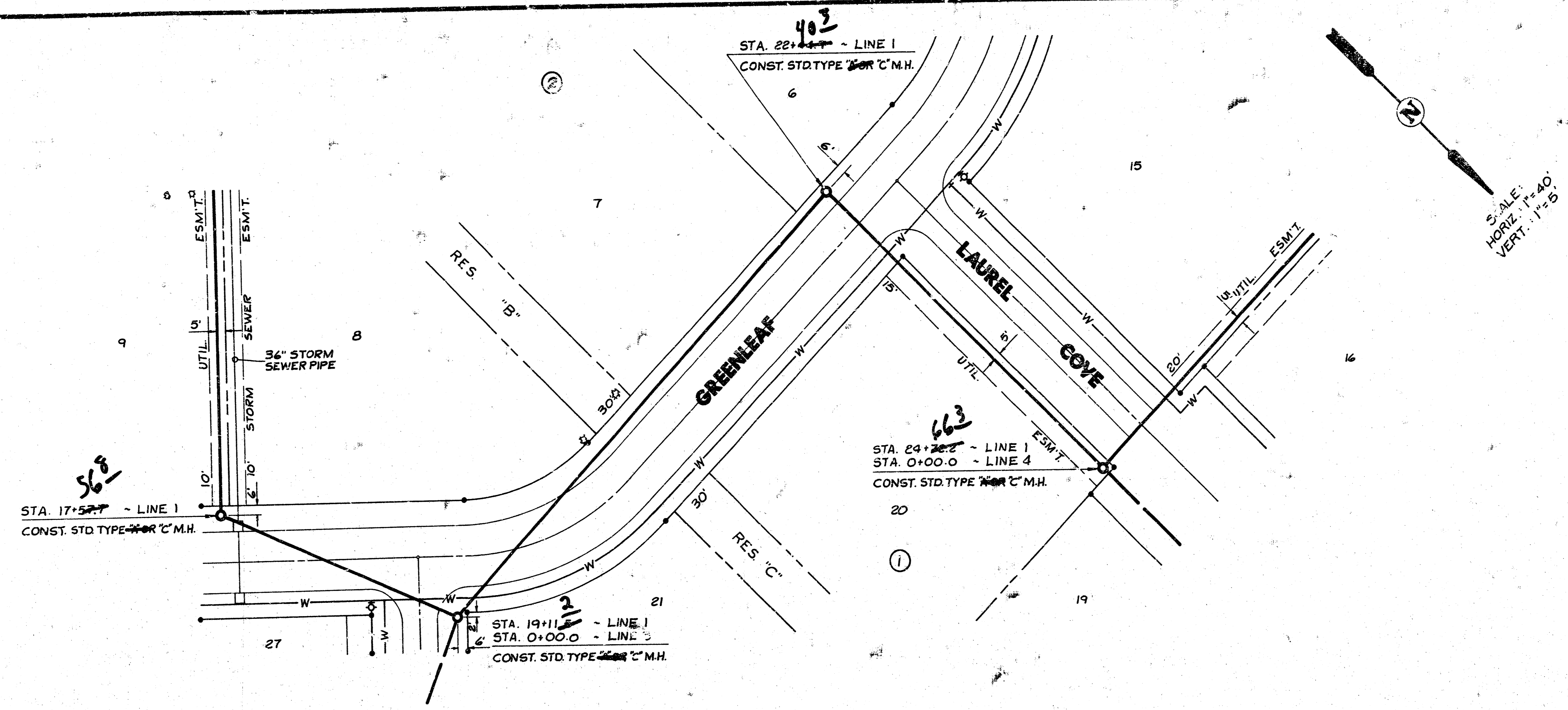
STA. 11+83.1 - LINE 1  
 CONST. STD. TYPE 48" C.M.H.

8' of encroachment for utilities as agreed upon by Cities Service Gas Co.

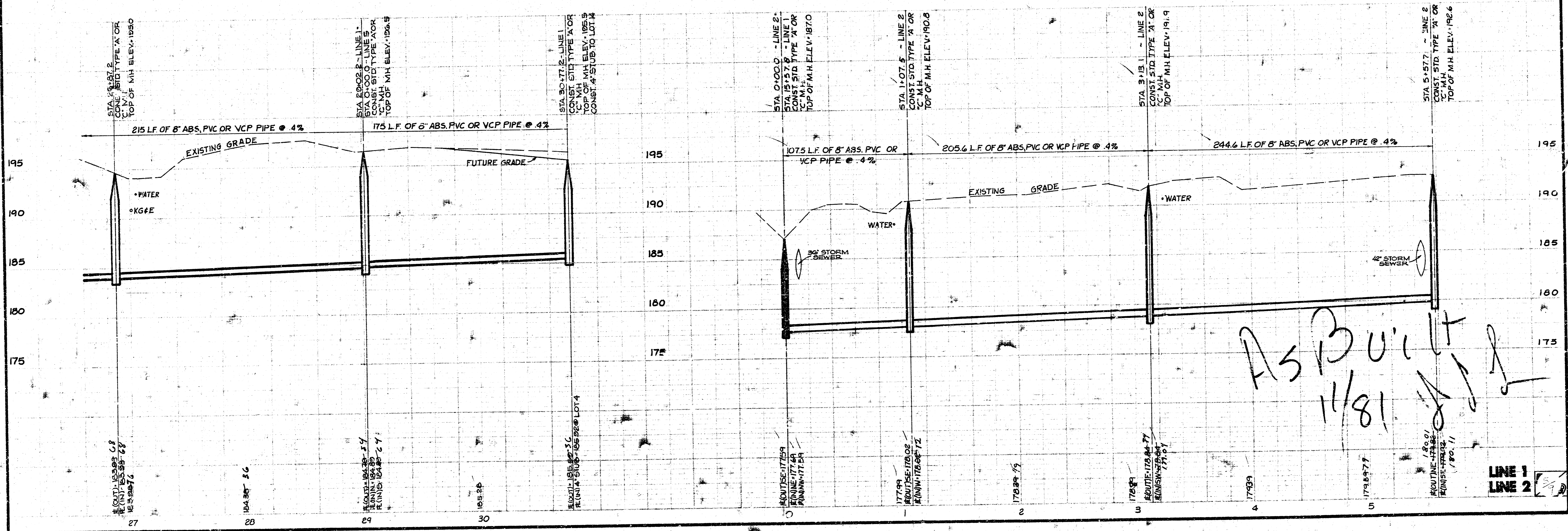
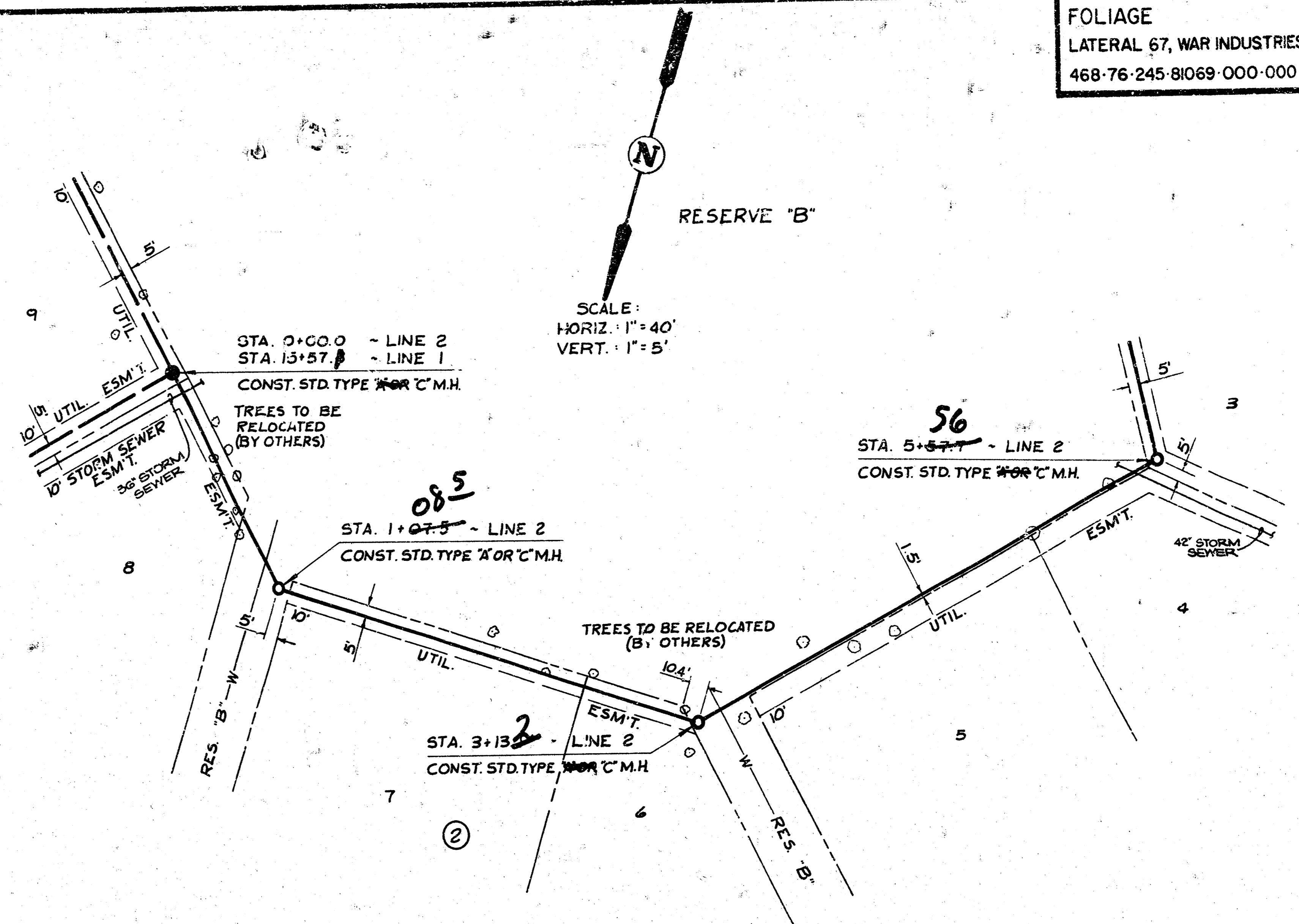
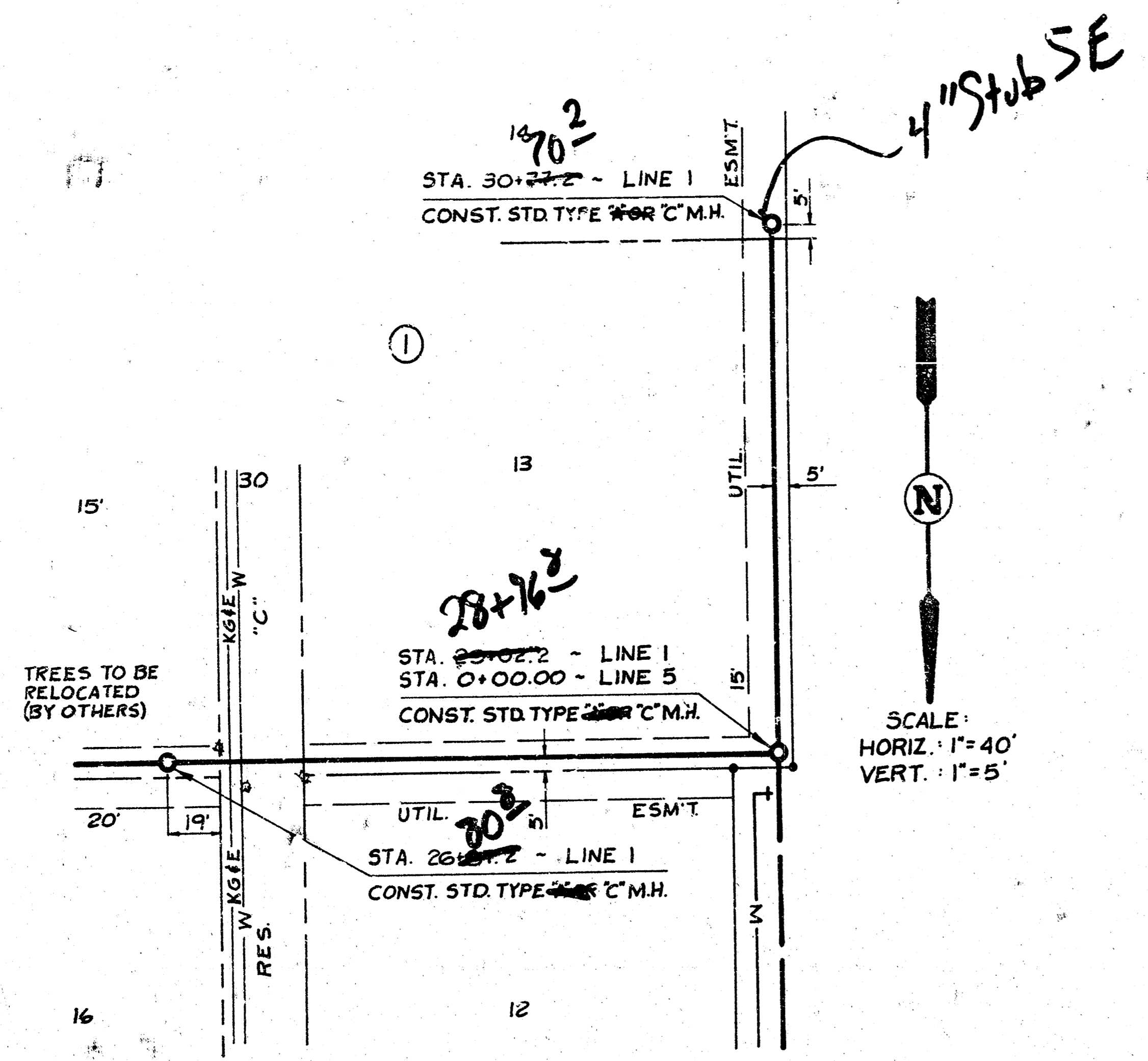


LINE 1

FOLIAGE  
 LATERAL 67, WAR INDUSTRIES SEWER  
 468-76-245-81069-000-000-001



FOLIAGE  
LATERAL 67, WAR INDUSTRIES SEWER  
468-76-245-81069-000-000-001

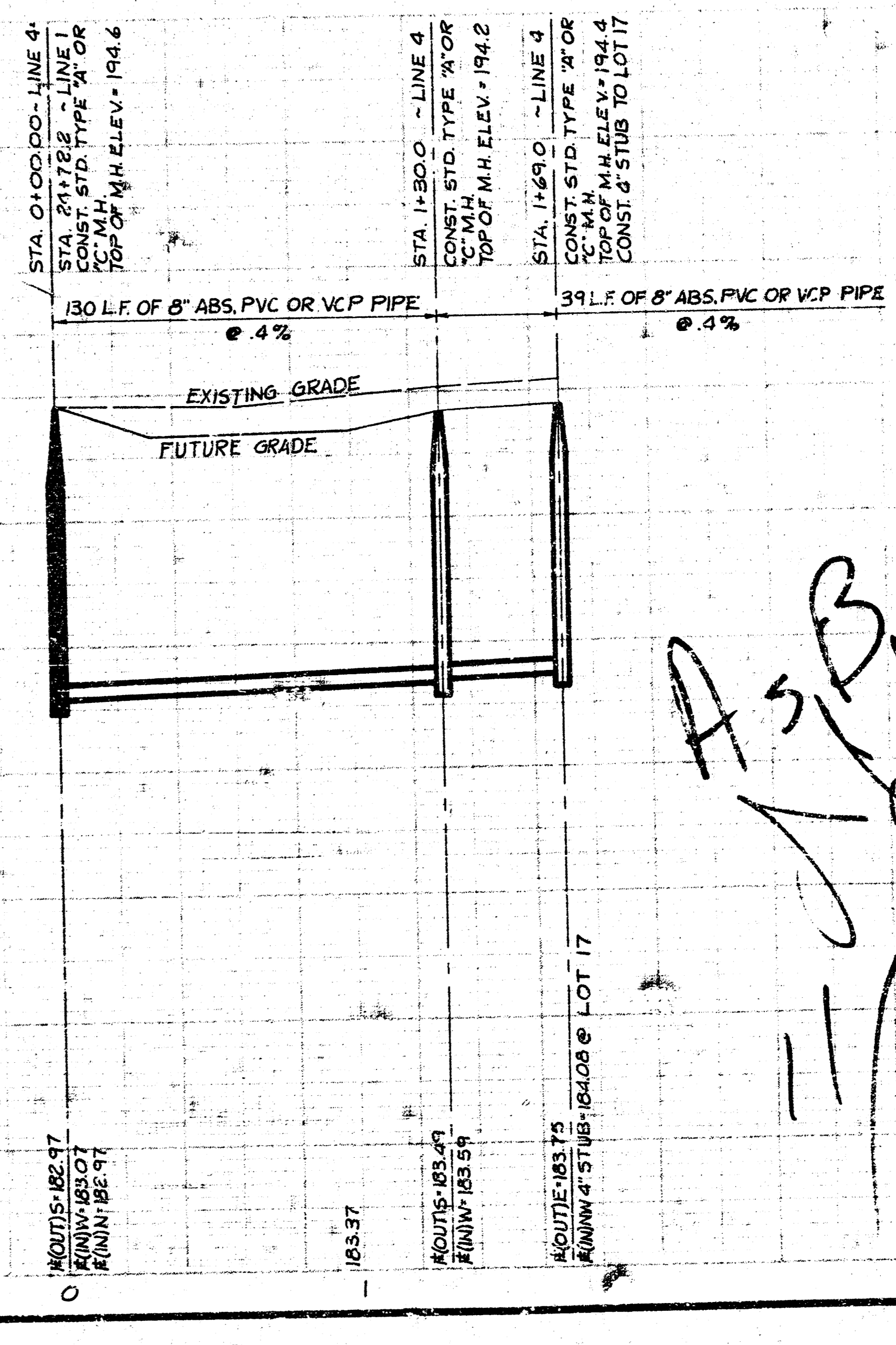
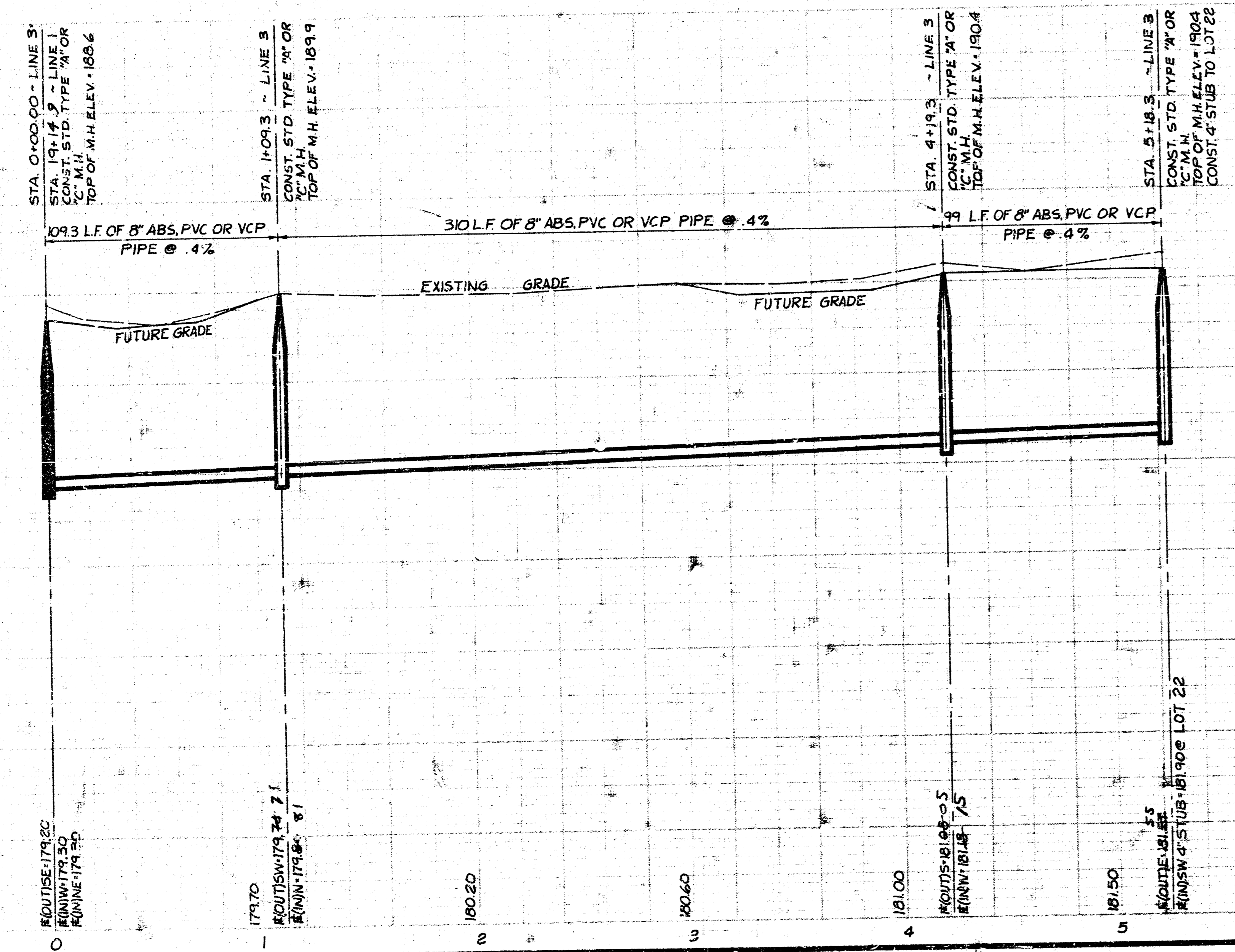
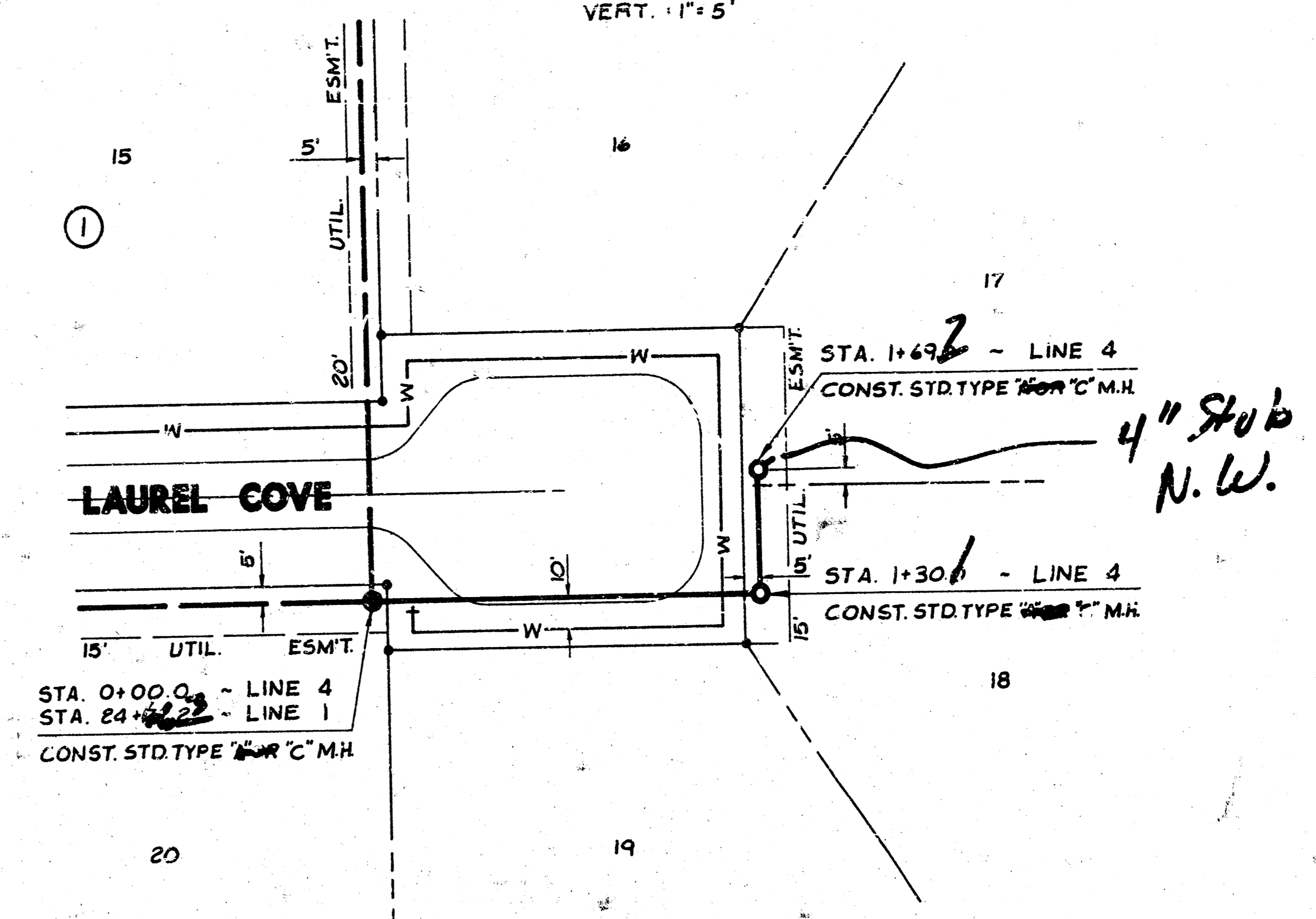
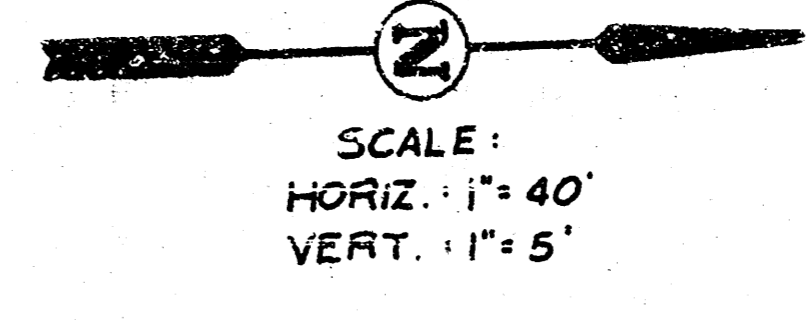
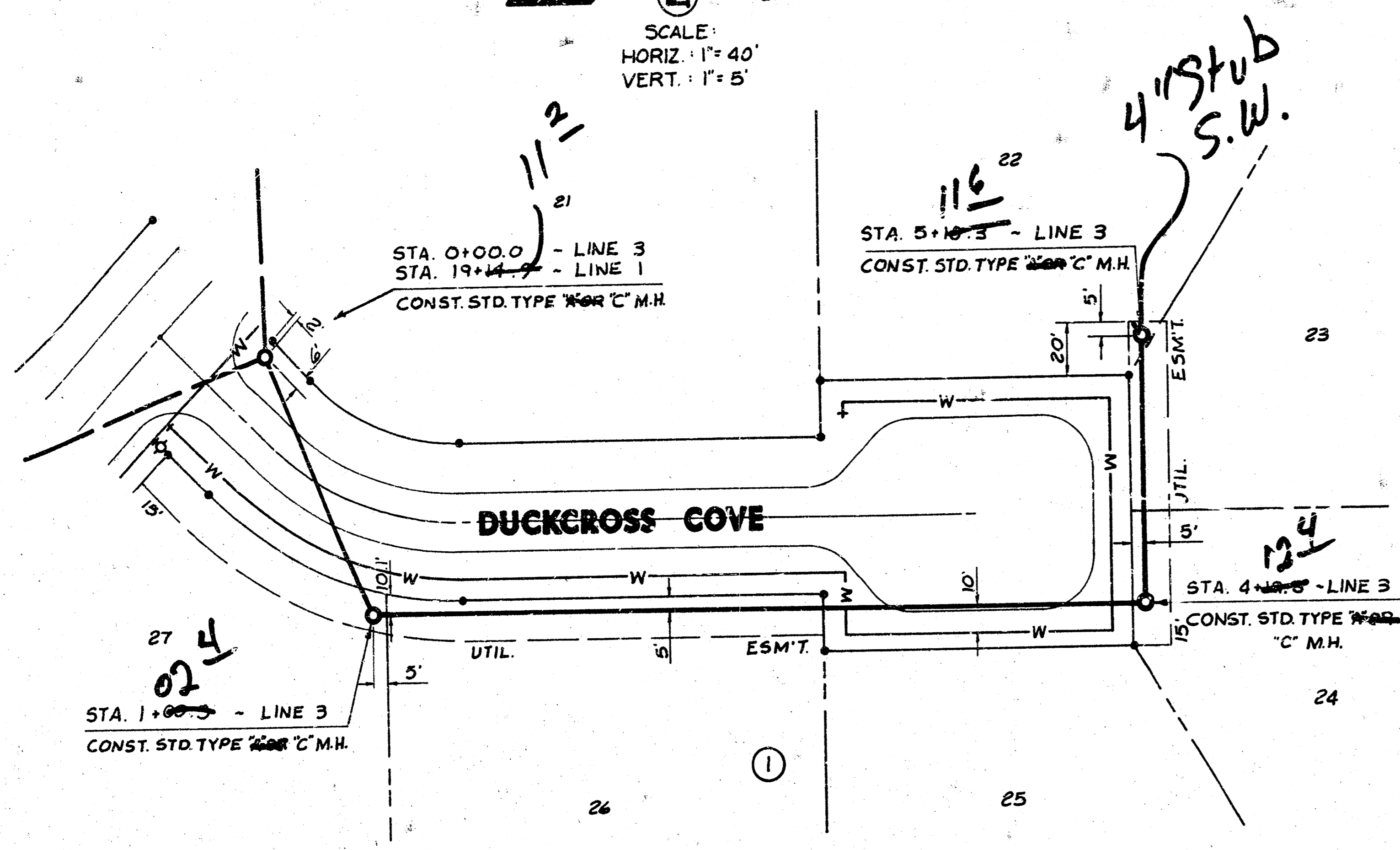
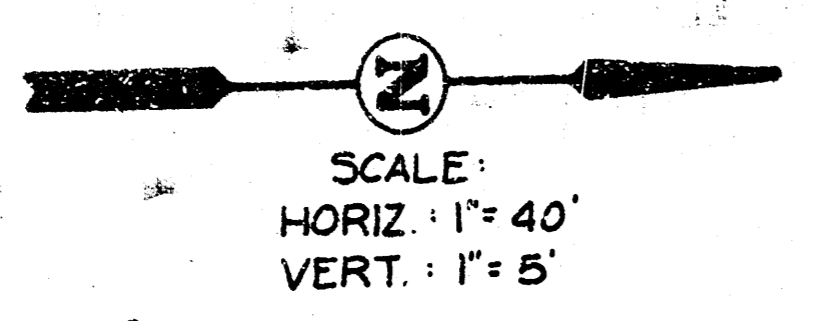


As Built  
11/81

LINE 1  
LINE 2



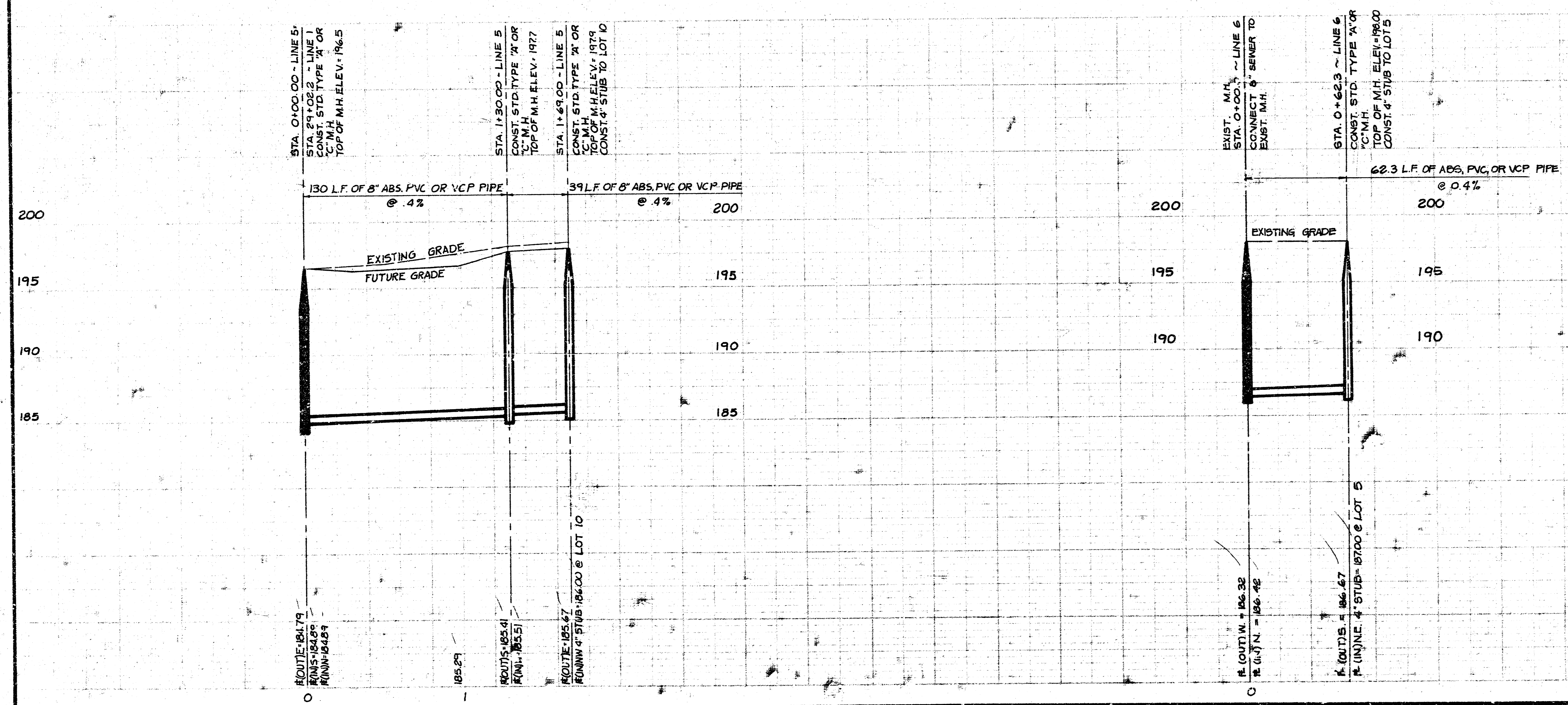
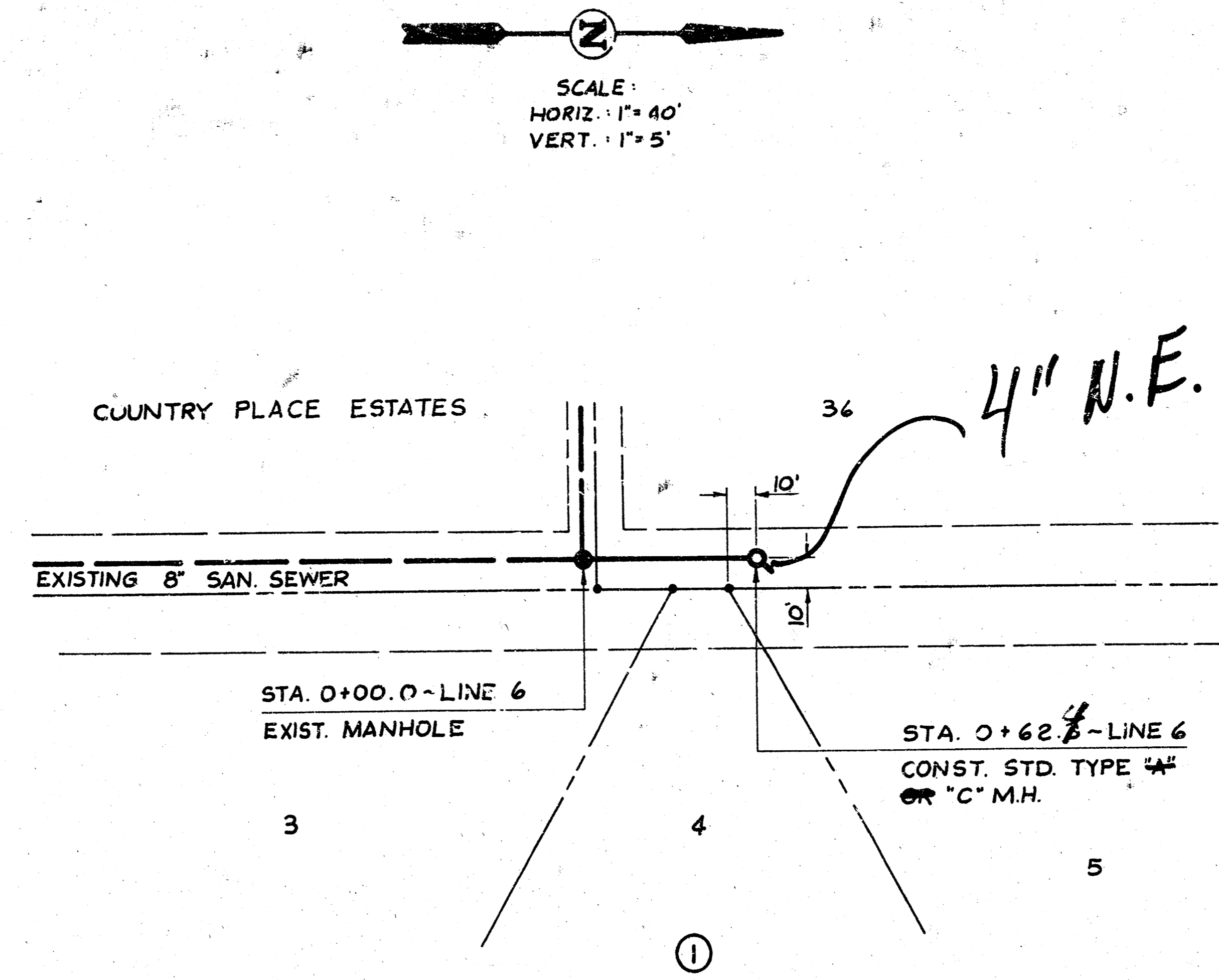
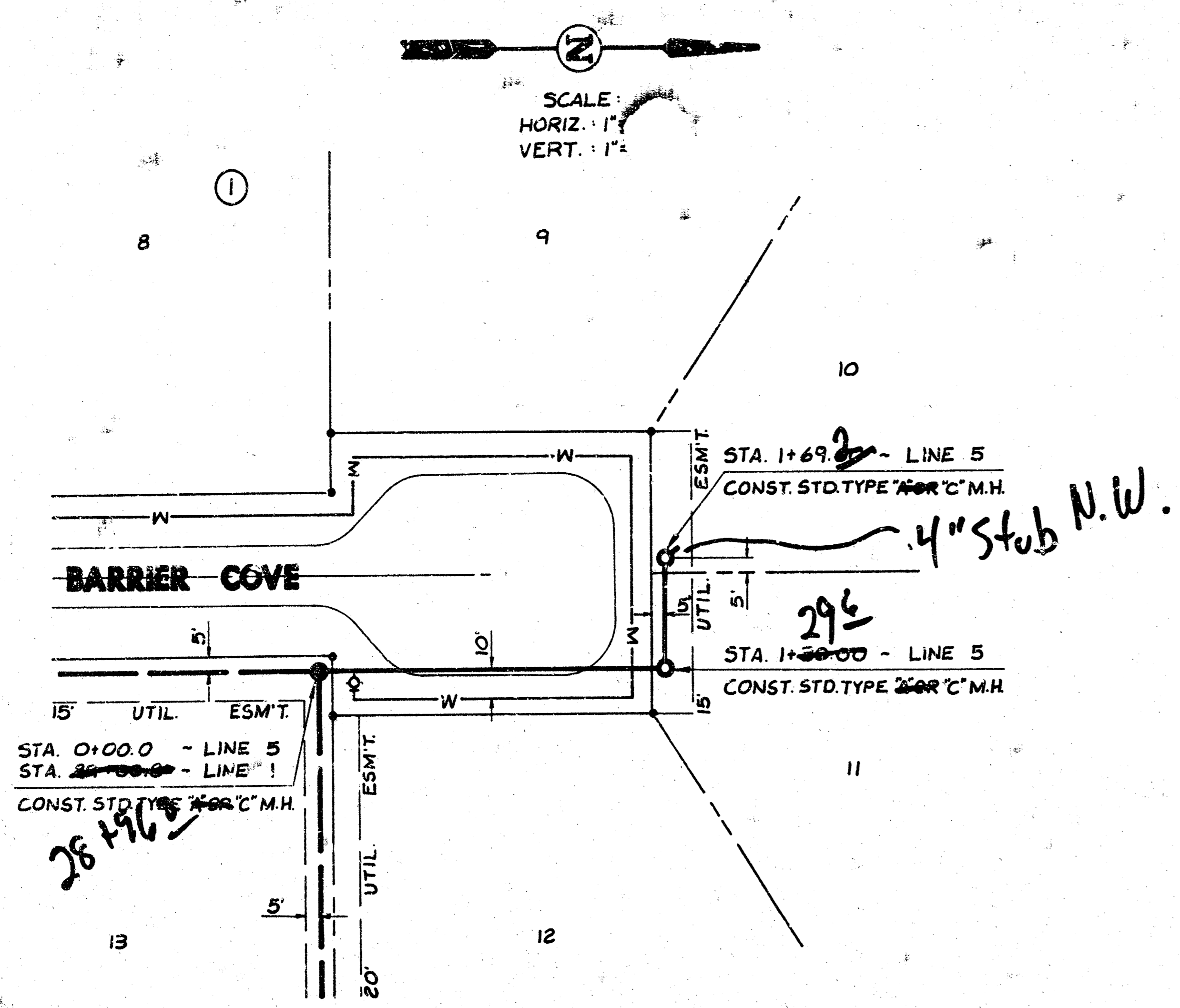
FOLIAGE  
 LATERAL 67, WAR INDUSTRIES SEWER  
 468-76-245-81069-000-000-001



*As Built*  
 11/81

LINE 3  
 LINE 4

FOLIAGE  
 LATERAL 67, WAR INDUSTRIES SEWER  
 468-76-245-81069-000-000-001



As Built  
 JJJ  
 11/81

LINE 6  
 LINE 5

