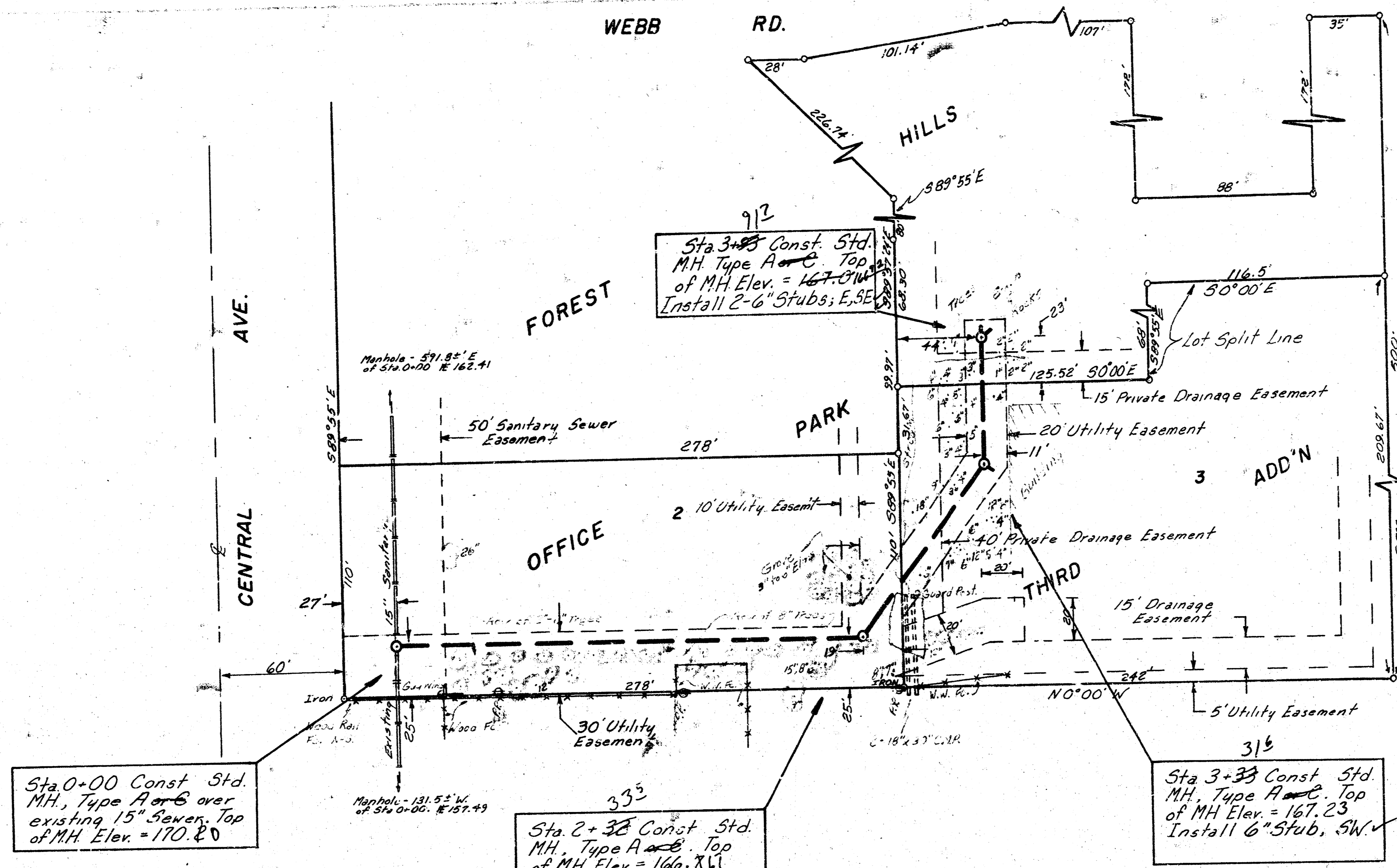
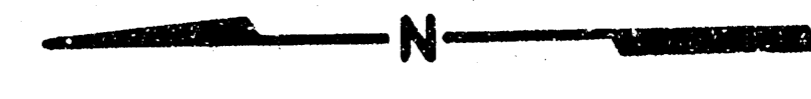


10/21/82
D. Dullias
S. Lindsey

10/21/82
D. Dullias
S. Lindsey



NOTE: CONTRACTOR SHALL REMOVE ONLY THOSE TREES WHICH ARE ABSOLUTELY NECESSARY TO FACILITATE CONSTRUCTION OF THE SEWER, AND AS APPROVED BY THE ENGINEER.

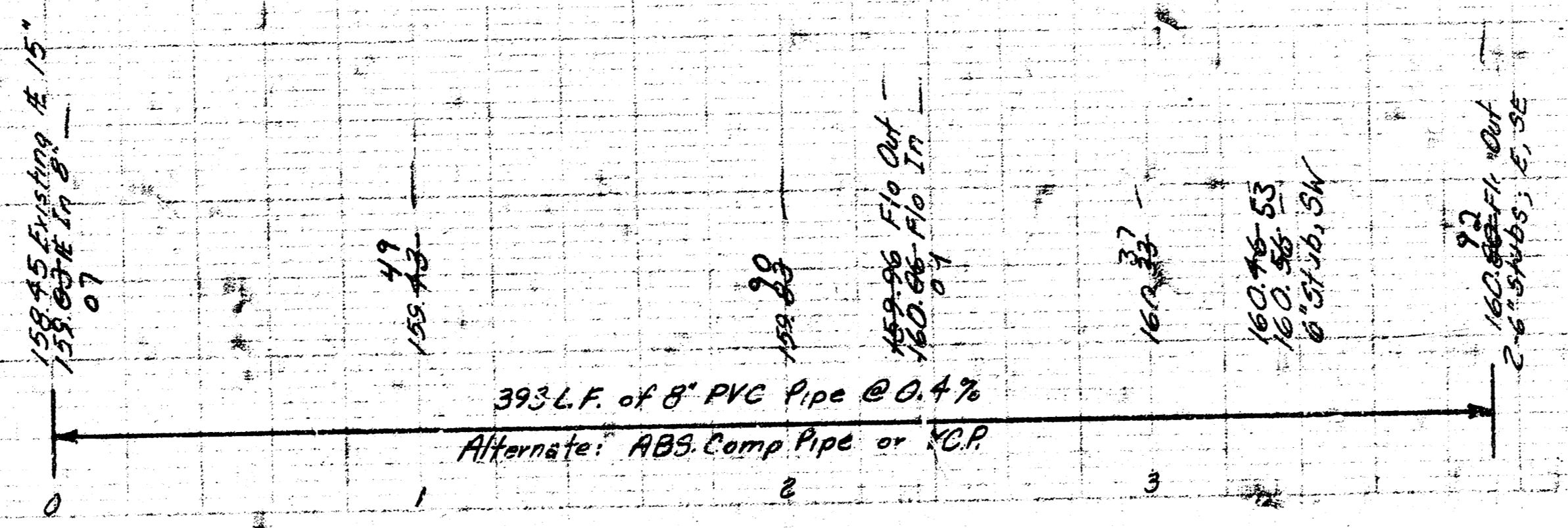
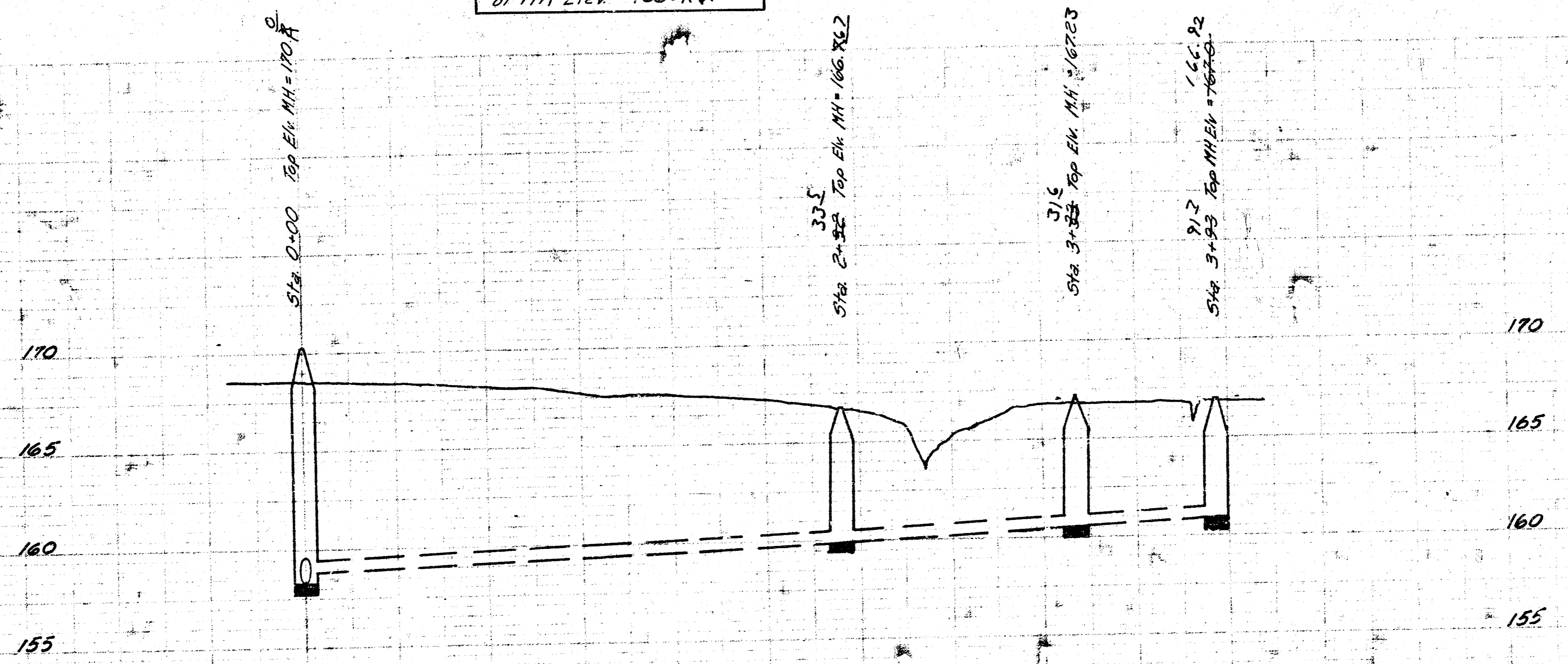


Scale: 1" = 40' Plan
Vert. 1" = 5' Profile

Bench Mark: 166.28 - RR Spk. S. Fa. Light Pole, N. Side Central Pkwy @ Laurel.
167.84 - E. Rim Elev. Manhole 131.5' W. of Sta. 0+00

THE CONTRACTOR SHALL BE RESPONSIBLE FOR PRESERVING PROPERTY IRONS. THE CONTRACTOR SHALL BE REQUIRED TO RE-ESTABLISH ANY PROPERTY IRONS WHICH ARE DAMAGED OR DESTROYED BY HIS CONSTRUCTION OPERATIONS. SUCH IRONS SHALL BE RE-ESTABLISHED BY A LICENSED LAND SURVEYOR OR A LICENSED PROFESSIONAL ENGINEER IN ACCORDANCE WITH STATE LAWS.

As Built
JLL
10-82



LATERAL 68, WAR IND. SEWER
CITY OF WICHITA, KANSAS
R. W. BRUGGEMAN
DIRECTOR OF ENGINEERING / CITY ENGINEER
PROJ. NO. 468-76-245-81077-000-000-001
Date _____ Sheet 1 of 1