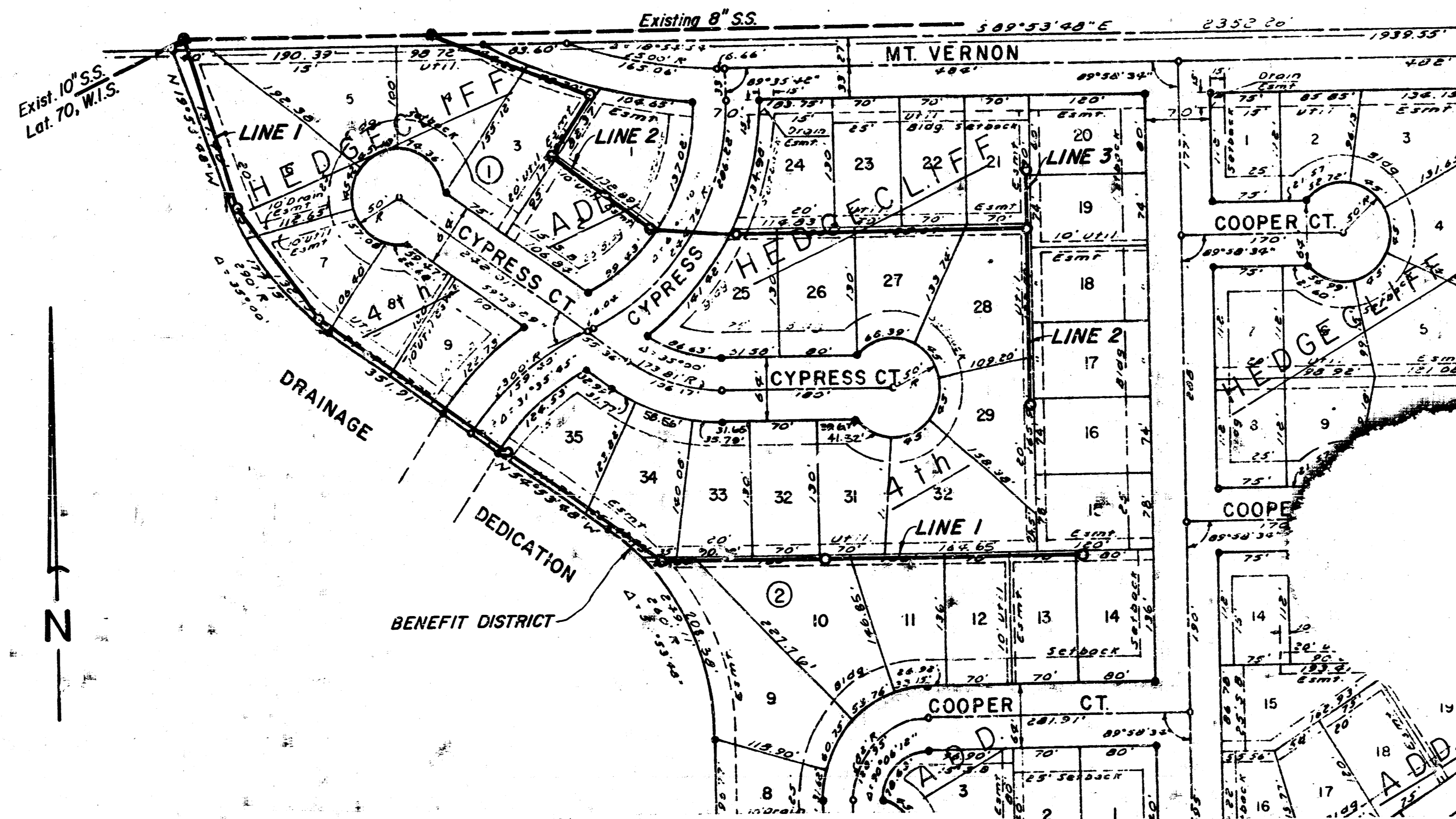


LATERAL 73, WAR INDUSTRIES SEWER

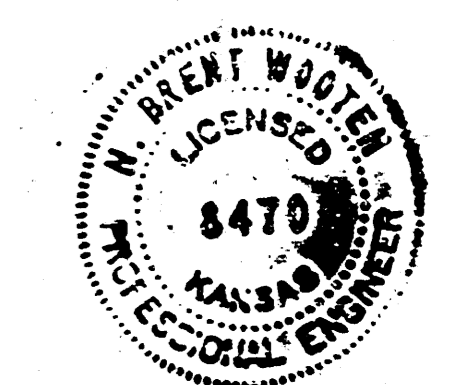
Project no. 468-76-245-81168-000-000-001

CITY OF WICHITA, KANSAS
MIKE E. LINDEBAK CITY ENGINEER

As Built
J.H.
8-84

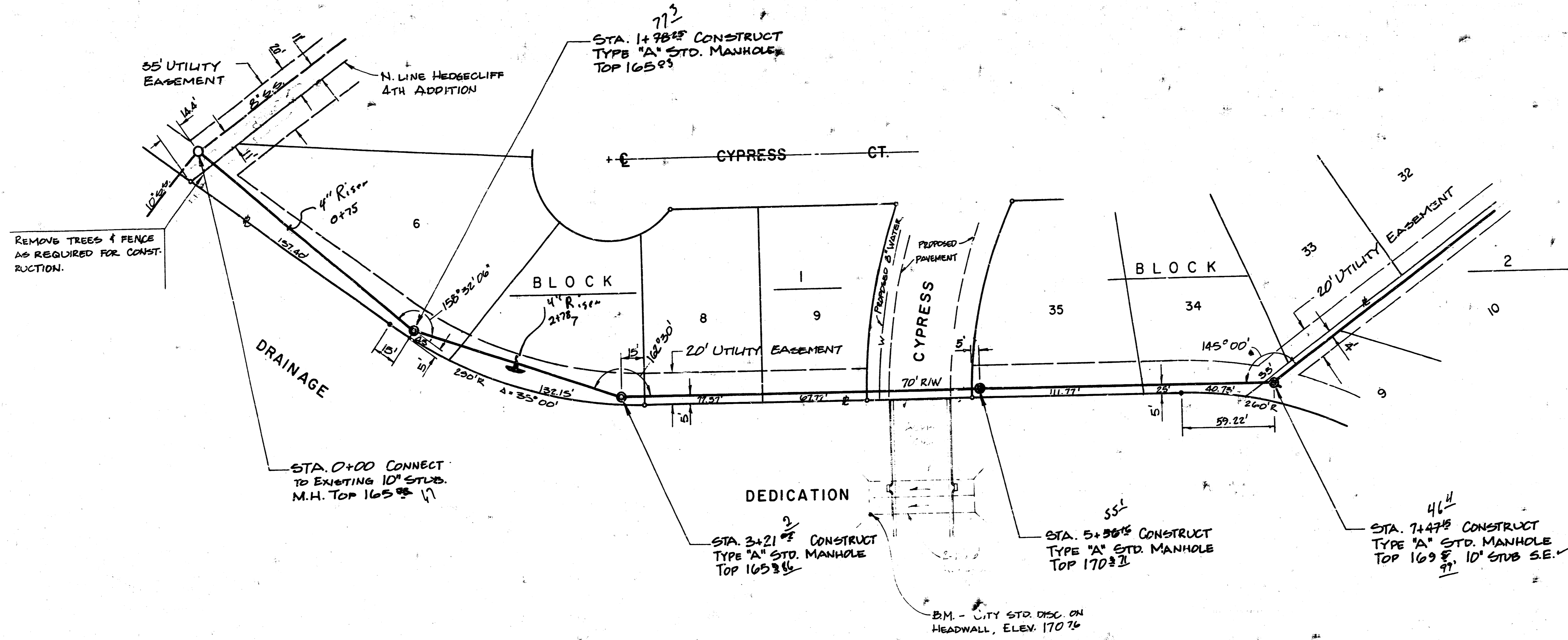


NOTE: AREA SERVED BY THIS SEWER IS PRESENTLY PLATTED AS HEDGECLIFF 3RD ADDITION AND IS IN THE PROCESS OF BEING PLATTED INTO HEDGECLIFF 4TH ADDITION.



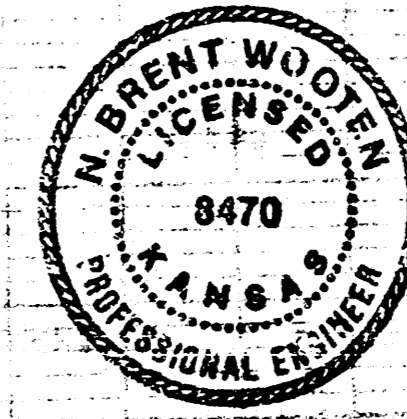
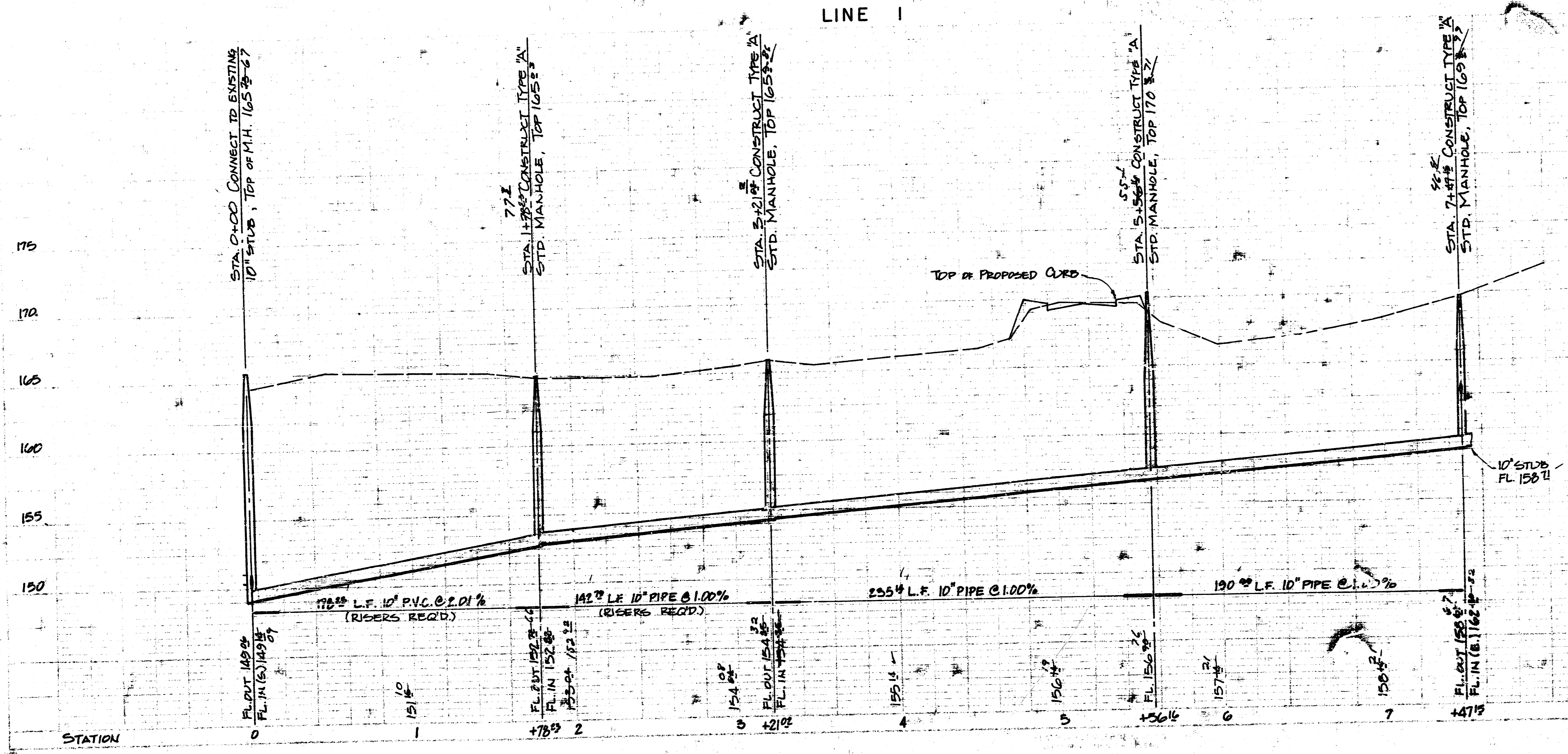
BAUGHMAN COMPANY, P.A.
SURVEYING & ENGINEERING
314/262-7221 • 330 LAURA • WICHITA, KANSAS 67211

FILMED FROM THE BEST AVAILABLE COPY



As Built
J.L.L.
8-84

SCALE
PLAN 1" = 40'
PROFILE 1" = 40' HORIZ.
1" = 5' VERT.

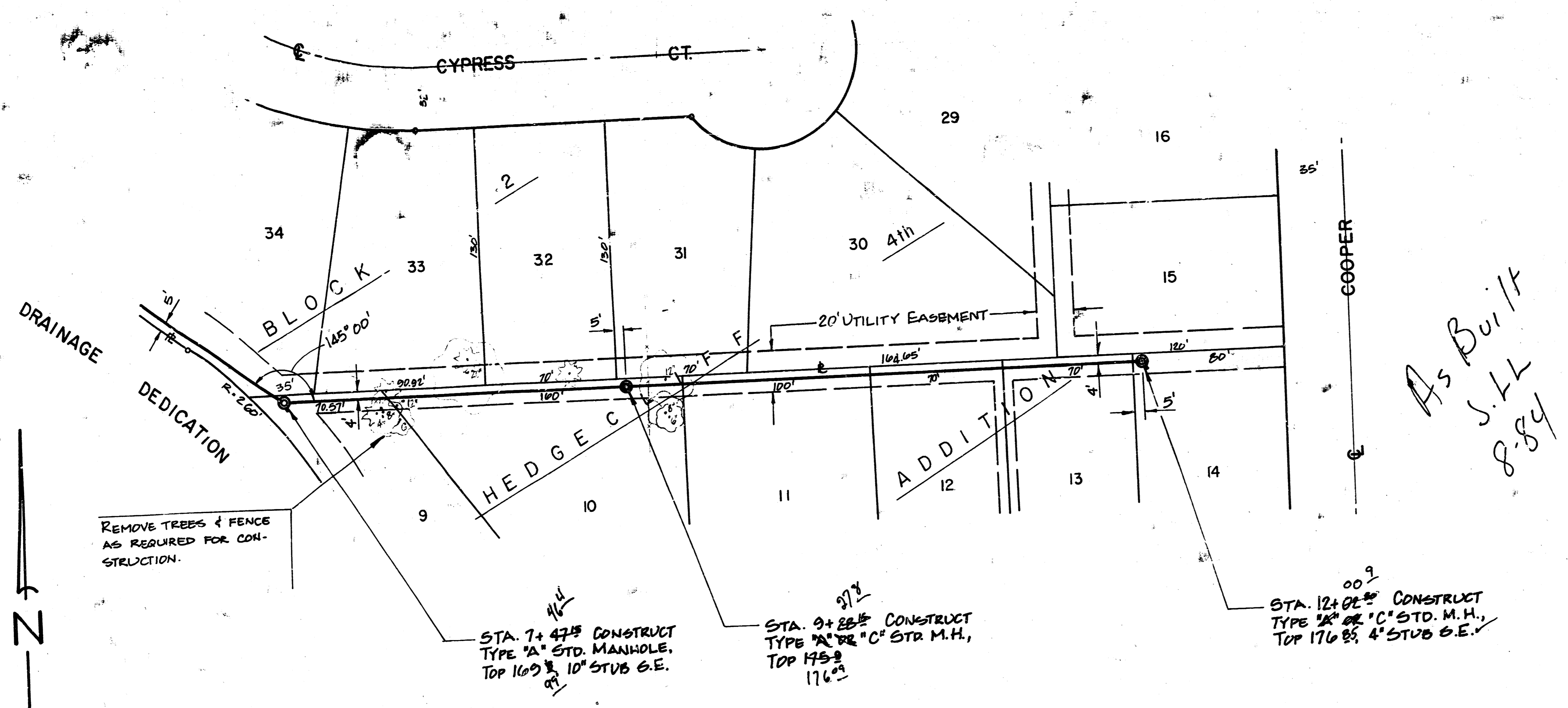


**LATERAL 73
WAR INDUSTRIES SEWER**
City of Wichita, Kansas
Project No. 68-76-245-81168-000-001

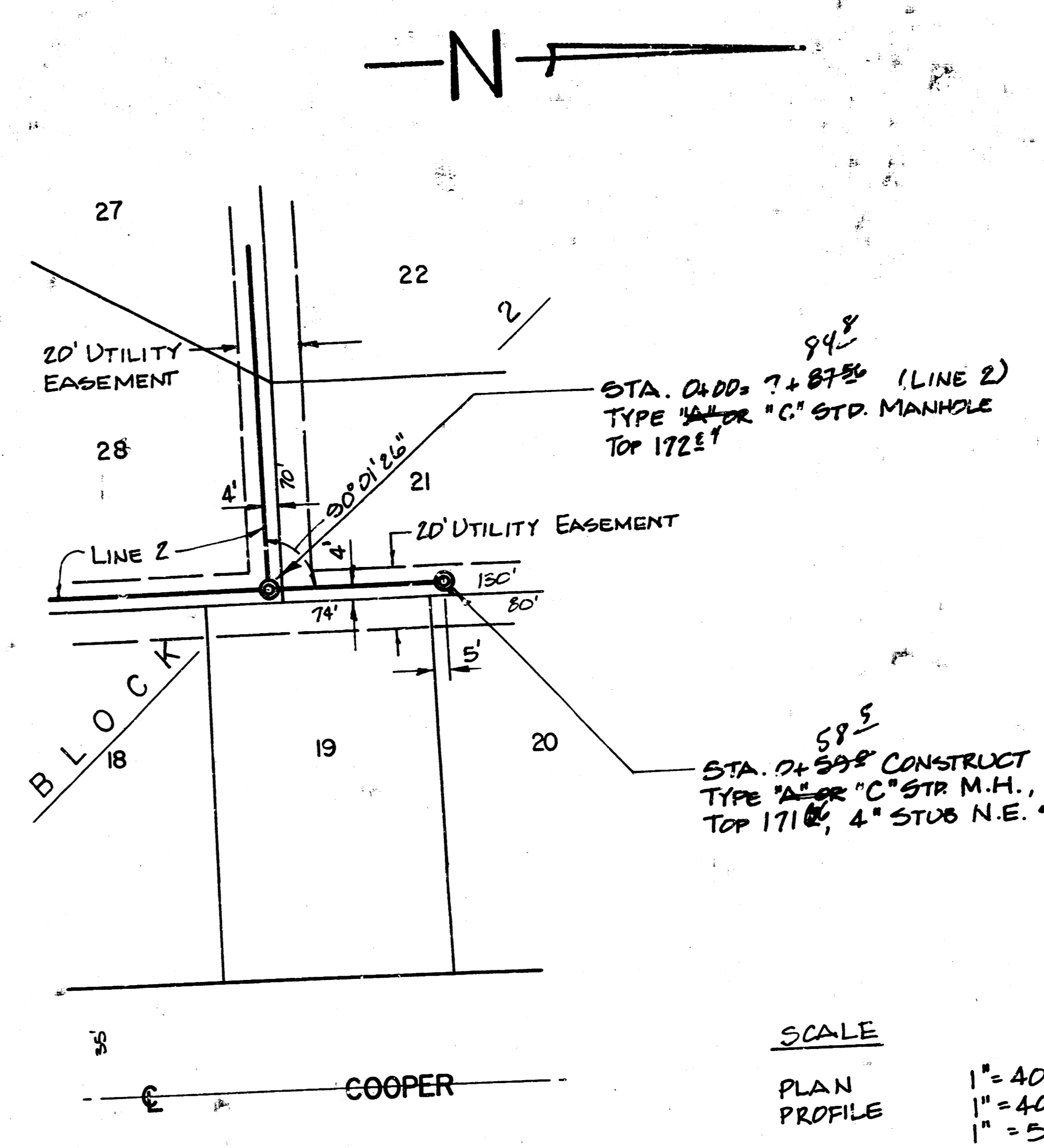
BAUGHMAN COMPANY, P.A.
SURVEYING & ENGINEERING
2147 W. 77TH • 330 WARR • WICHITA, KANSAS 67211

2/5

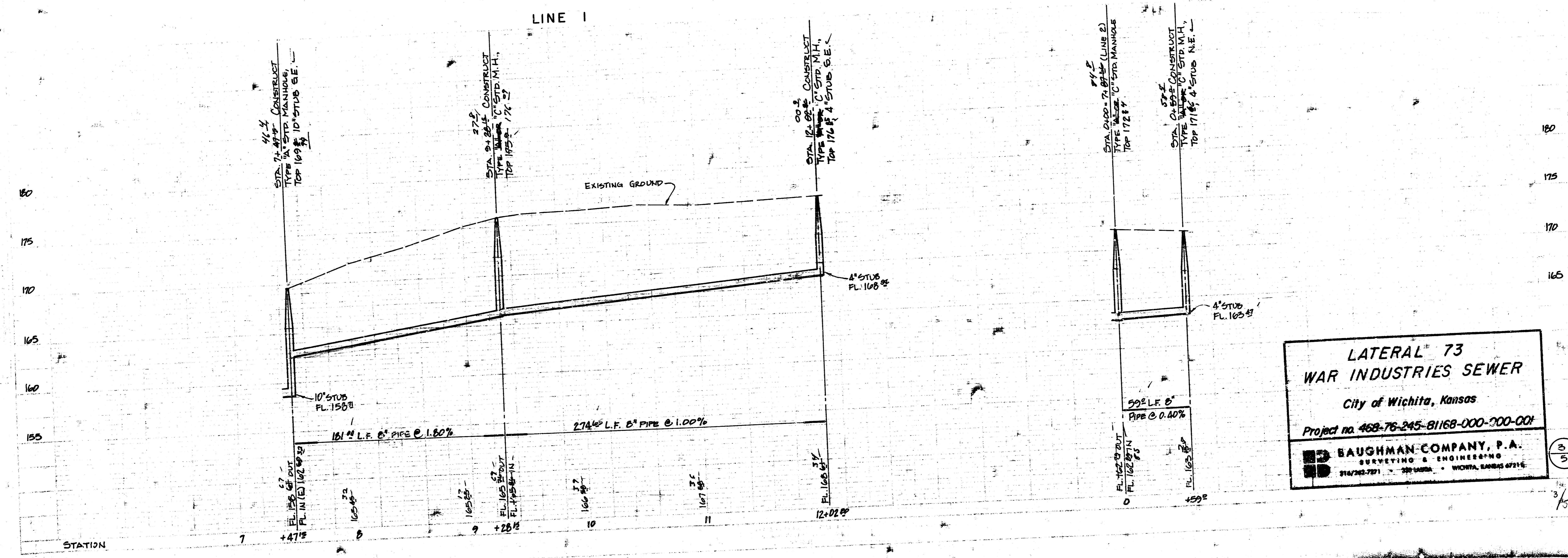
FILMED FROM THE BEST AVAILABLE COPY.....



As Built
S.L.L
8-84



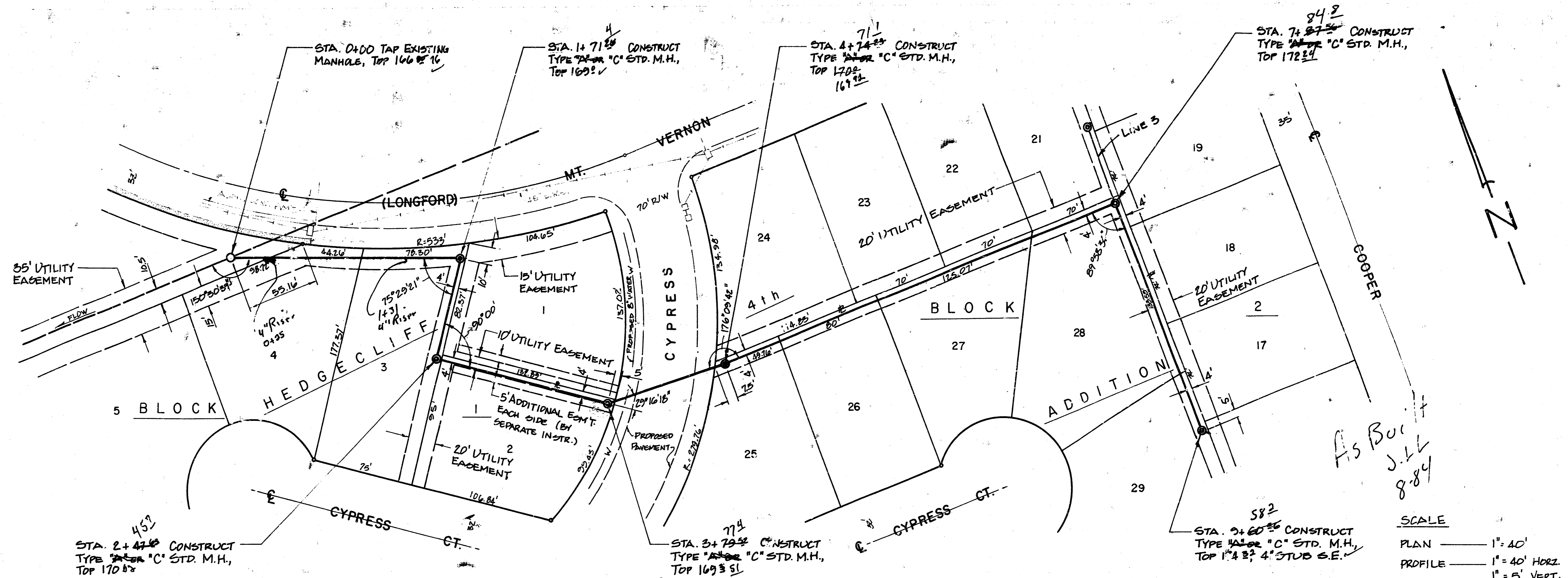
SCALE
PLAN 1" = 40'
PROFILE 1" = 40' HORIZ.
1" = 5' VERT.



LATERAL 73
WAR INDUSTRIES SEWER
City of Wichita, Kansas
Project no. 468-76-245-81168-000-001
BAUGHMAN COMPANY, P.A.
SURVEYING & ENGINEERING
214/262-7271 • 300 W. 10th • WICHITA, KANSAS 67214

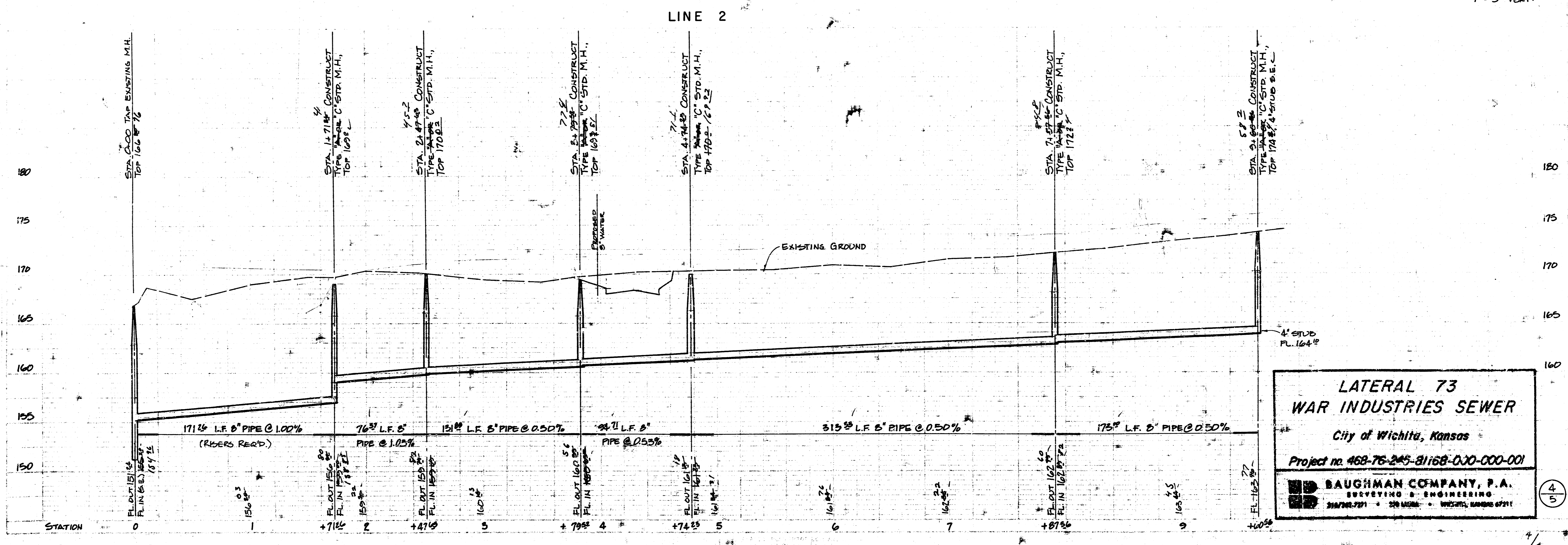
3/5

FILMED FROM THE BEST AVAILABLE COPY...



As Built
J.L.L.
8.84

SCALE
PLAN — 1" = 40'
PROFILE — 1" = 40' Horiz.
1" = 5' Vert.



**LATERAL 73
WAR INDUSTRIES SEWER**
City of Wichita, Kansas
Project no. 468-75-245-81168-030-000-001

BAUGHMAN COMPANY, P.A.
SURVEYING & ENGINEERING
310 W. 7th St. • Wichita, Kansas 67211

FILMED FROM THE BEST AVAILABLE COPY.....

