

**SANITARY SEWER PLANS
LATERAL 100, WAR INDUSTRIES SEWER
FOX POINTE
PROJECT NO. 468-81892**

CITY OF WICHITA, KANSAS
MICHAEL E. LINDEBAK, CITY ENGINEER

INDEX CODE 741637

INDEX TO DRAWINGS

SHEET NO.	DESCRIPTION
1	TITLE SHEET
2	LINE 1
3	LINE 1 & 2
4	C.O. LINE PROFILES
5	DETAILS
6	FINAL PLAT

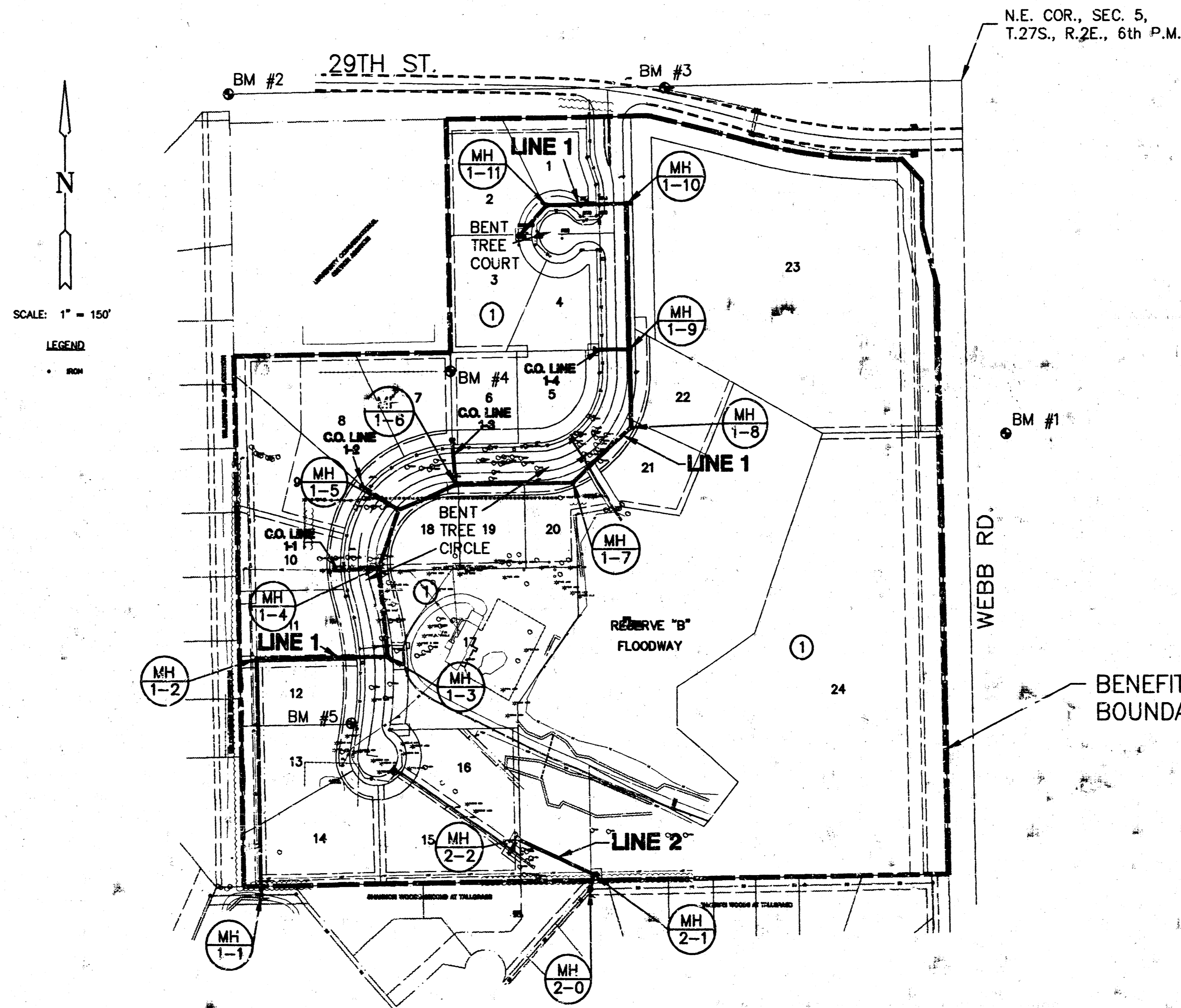
GENERAL NOTES

- THE CONTRACTOR SHALL BE RESPONSIBLE FOR PRESERVING PROPERTY IRONS. THE CONTRACTOR WILL BE REQUIRED TO RE-ESTABLISH ANY PROPERTY IRONS WHICH ARE DAMAGED OR DESTROYED BY HIS CONSTRUCTION OPERATIONS. SUCH IRONS SHALL BE RE-ESTABLISHED BY A LICENSED LAND SURVEYOR IN ACCORDANCE WITH STATE LAWS.
- EXISTING UTILITIES AND THEIR LOCATIONS, AS SHOWN ON THE PLANS REPRESENT THE BEST INFORMATION OBTAINABLE FOR DESIGN. LOCATION INFORMATION HAS BEEN OBTAINED FROM THE VARIOUS UTILITY COMPANIES AND IS EITHER FROM COMPANY RECORD DRAWINGS OR COMPANY PROVIDED FIELD LOCATIONS. THE PLAN LOCATIONS SHOWN ARE NOT GUARANTEED. ADDITIONAL EXISTING UTILITIES MAY ALSO BE ENCOUNTERED.
- CONTRACTOR WILL BE REQUIRED TO PROVIDE A MINIMUM ADVANCE NOTICE OF FORTY-EIGHT (48) HOURS TO UTILITY COMPANIES PRIOR TO STARTING ANY EXCAVATION AS FOLLOWS:

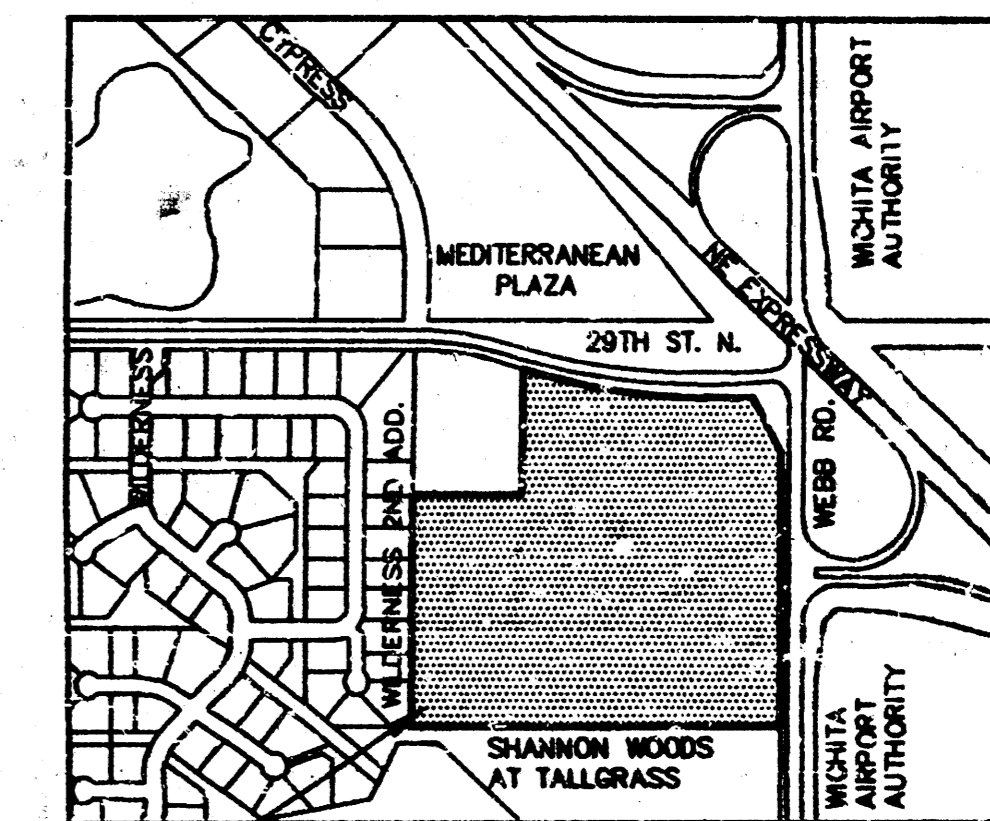
KANSAS ONE-CALL	1-800-344-7233
	or 687-2470 (LOCAL WICHITA)

THE CONTRACTOR MUST NOTIFY THE FOLLOWING IN CASE OF AN EMERGENCY:

SOUTHWESTERN BELL TELEPHONE COMPANY	1-571-2115
CABLEVISION	262-0661
KANSAS GAS & ELECTRIC (ELECTRIC)	264-1141
KANSAS GAS & ELECTRIC (GAS)	832-3189 OR 832-3189
CITY OF WICHITA SEWER MAINTENANCE	268-4908
ARKLA GAS COMPANY	942-8350 OR 263-8161
CITY OF WICHITA WATER DEPARTMENT	268-4908
WILLIAMS PIPELINE COMPANY	1-918-588-4200
- RUBBLE FROM THE REMOVAL OF MISCELLANEOUS STRUCTURES AND EXCESS EXCAVATION WHICH IS TO BE WASTED SHALL BE DISPOSED OF ON SITES TO BE PROVIDED BY THE CONTRACTOR. THESE SITES SHALL BE APPROVED BY THE ENGINEER AS TO SUITABILITY, APPEARANCE AND SITE LOCATION. LOCATIONS THAT, IN THE OPINION OF THE ENGINEER, WILL LEAVE AN UNSIGHTLY APPEARANCE WILL NOT BE APPROVED. ALL DISPOSAL SITES MUST BE APPROVED BY THE KANSAS DEPARTMENT OF HEALTH AND ENVIRONMENT. MATERIAL EITHER STOCKPILED OR DISPOSED OF IN A FLOOD PLAIN WOULD REQUIRE A KANSAS STATE BOARD OF AGRICULTURE PERMIT. ANY MATERIAL DUMPED IN WATERS OF THE UNITED STATES OR WETLANDS IS SUBJECT TO U.S. CORPS OF ENGINEERS PERMITTING REGULATIONS. ANY MATERIAL BURIED OR STOCKPILED BEYOND APPROVED CONSTRUCTION LIMITS WOULD REQUIRE ADDITIONAL ARCHAEOLOGICAL INVESTIGATIONS UNLESS BURIED IN A PREVIOUSLY APPROVED BORROW LOCATION.
- COST OF EXCAVATION, HAULING, AND DUMPING OF EXCESS EXCAVATION SHALL BE SUBSIDIARY TO THE PROJECT.
- A PORTION OF EXCESS EXCAVATED MATERIAL SHALL BE MOUNDING AROUND MANHOLES WHICH EXTEND MORE THAN ONE (1) FOOT ABOVE THE EXISTING GROUND. SUCH MOUNDS SHALL BE CONSTRUCTED WITH A SIX (6) FOOT DIAMETER FLAT TOP WITH 4 TO 1 SIDE SLOPES DOWN TO THE ORIGINAL GROUND. THE ELEVATION OF THE FLAT TOP OF THE MOUND SHALL BE 0.4 FOOT BELOW THE TOP OF THE MANHOLE.
- ALL STUBS AND PLUGGED PIPES SHALL BE LOCATED WITH GREEN PLASTIC TAPE IN THE SAME MANNER AS RISERS.
- PRIOR TO LAYING SEWER LINES USING EXISTING STUBS IN EXISTING MANHOLES, THE CONTRACTOR SHALL EXPOSE AND VERIFY THE ELEVATION, GRADE AND ALIGNMENT OF EXISTING STUBS AND NOTIFY THE ENGINEER OF ANY DEVIATION FROM THE PLAN. WHERE CONNECTION TO AN EXISTING MANHOLE THAT DOES NOT HAVE AN EXISTING STUB OR THE STUB IS UNUSABLE DUE TO ELEVATION GRADE OR ALIGNMENT, THE CONTRACTOR SHALL RESHAPE THE EXISTING MANHOLE INVERT TO PROVIDE SMOOTH FLOW. THE COST OF RESHAPING EXISTING MANHOLE INVERTS IS INCIDENTAL TO THE PROJECT.
- TREES AND SHRUBS IN PUBLIC RIGHT-OF-WAY WHICH ARE IN DIRECT CONFLICT WITH PROPOSED NEW CONSTRUCTION SHALL BE REMOVED BY THE CONTRACTOR WITH THE ENGINEER'S APPROVAL. TREES AND SHRUBS WHICH ARE NOT IN DIRECT CONFLICT WITH PROPOSED NEW CONSTRUCTION SHALL BE SAVED AND PROTECTED FROM DAMAGE.
- THE PROPERTY OWNER ON LOT 17, BLK. 1 SHALL BE NOTIFIED UPON APPROVAL OF THE NEW SANITARY SEWER SYSTEM SO HE MAY OBTAIN THE NECESSARY PERMITS TO CONNECT TO THE NEW SANITARY SEWER SYSTEM.



N.E. COR., SEC. 5,
T.27S., R.2E., 6th P.M.



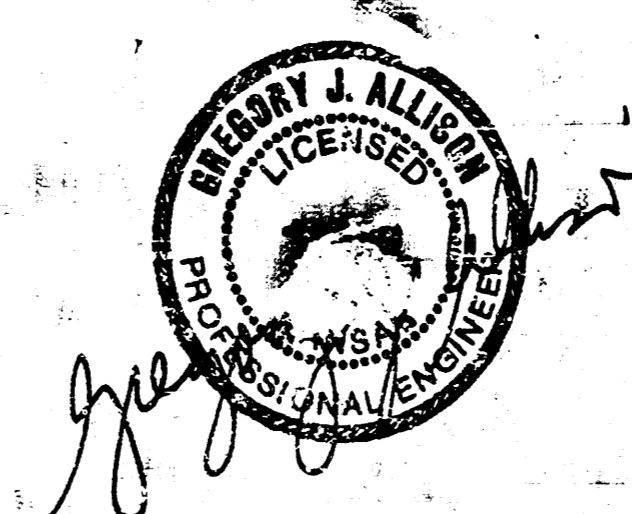
PROJECT SITE

LOCATION MAP

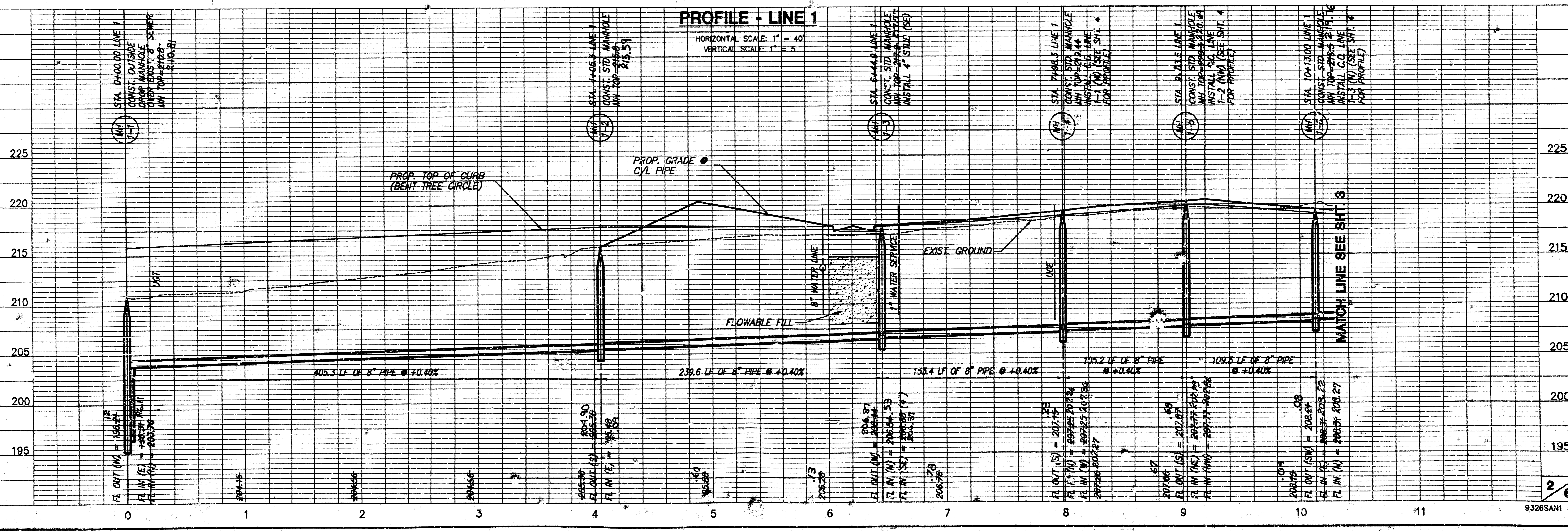
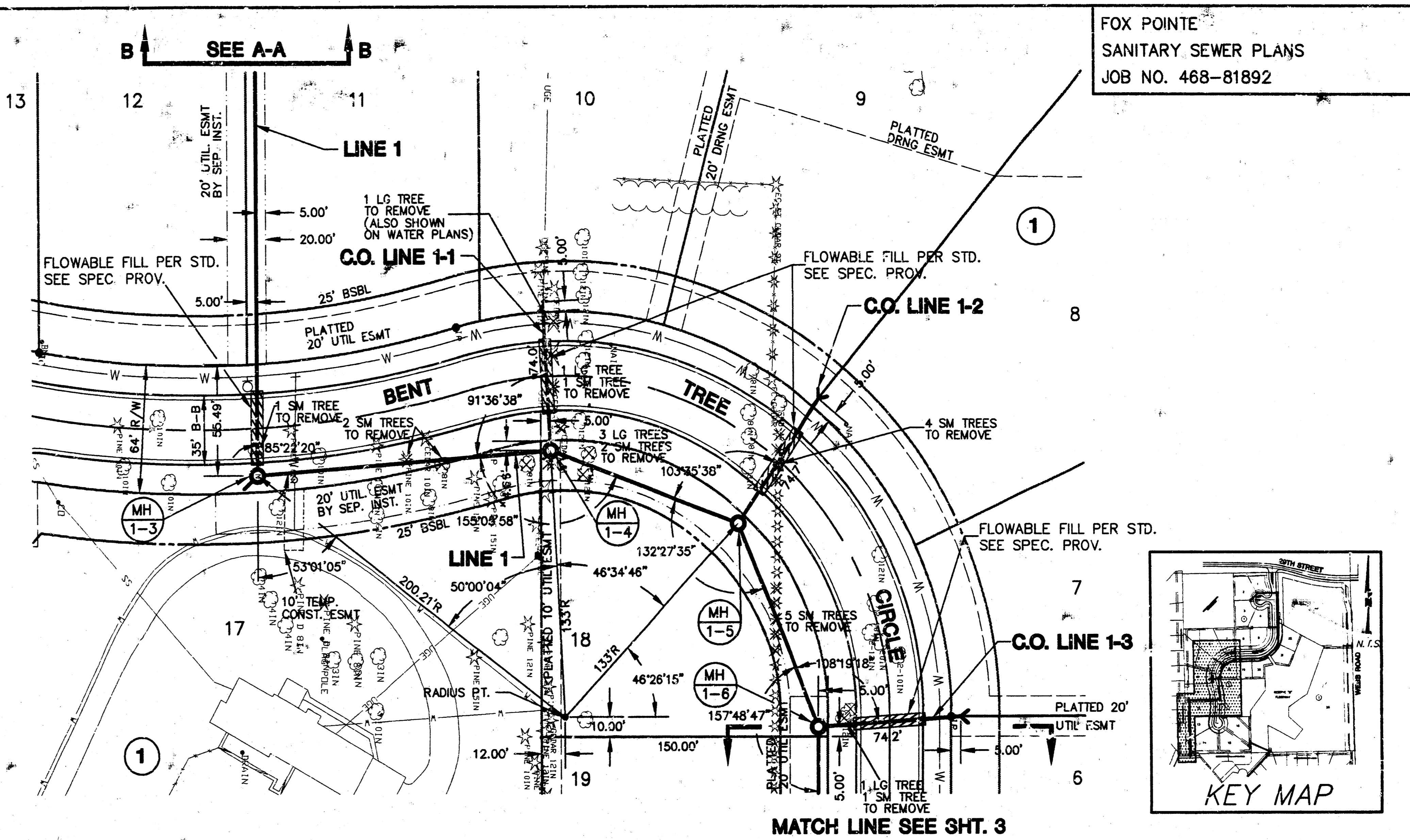
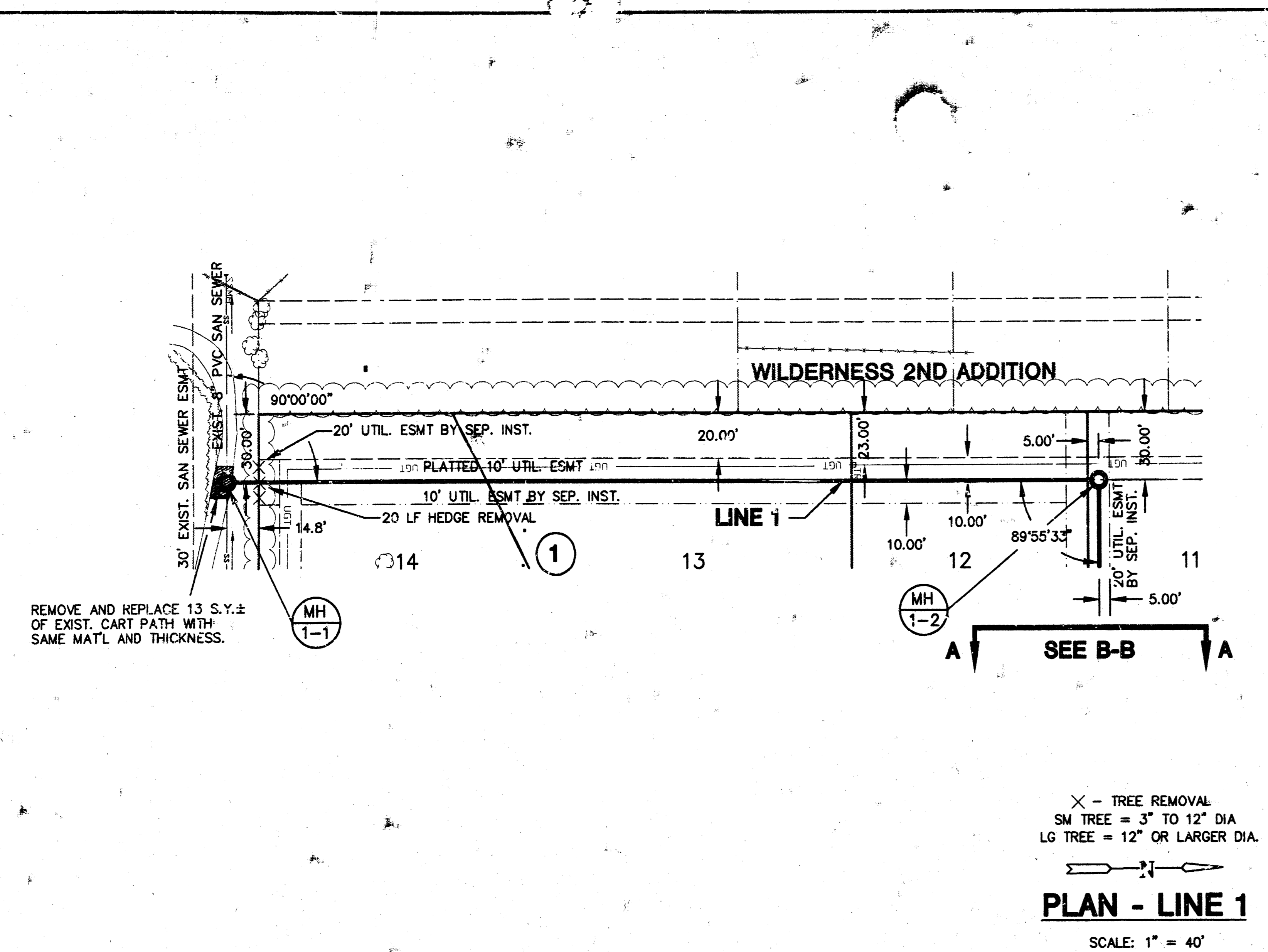
BENCHMARKS

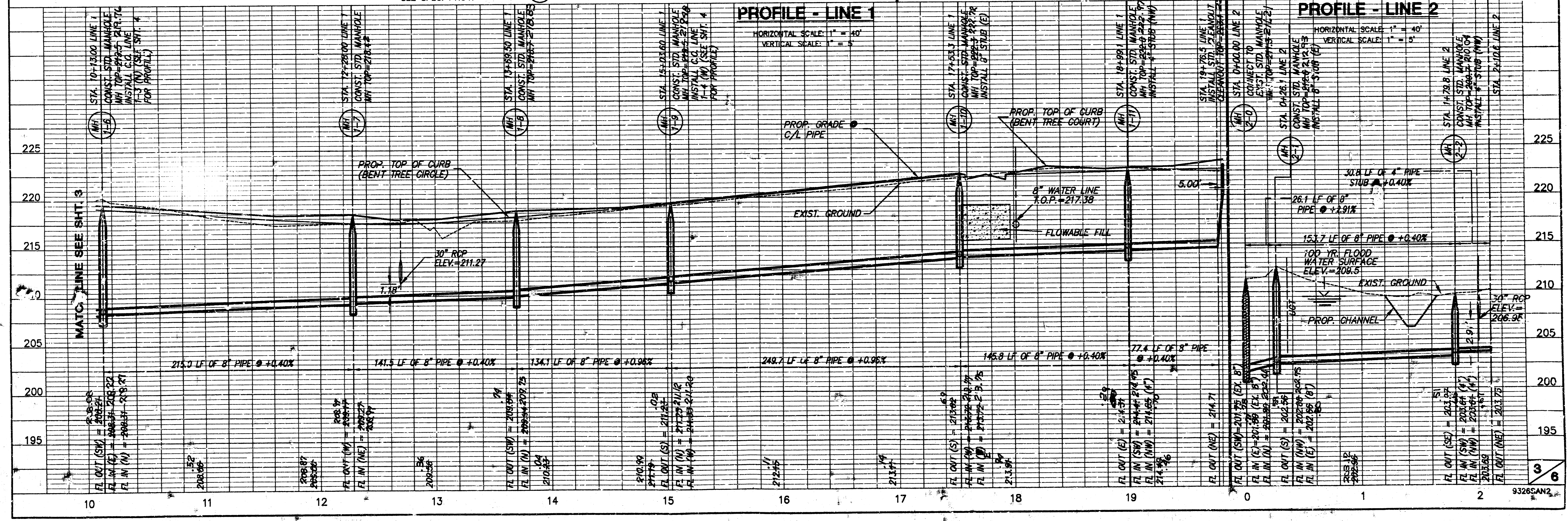
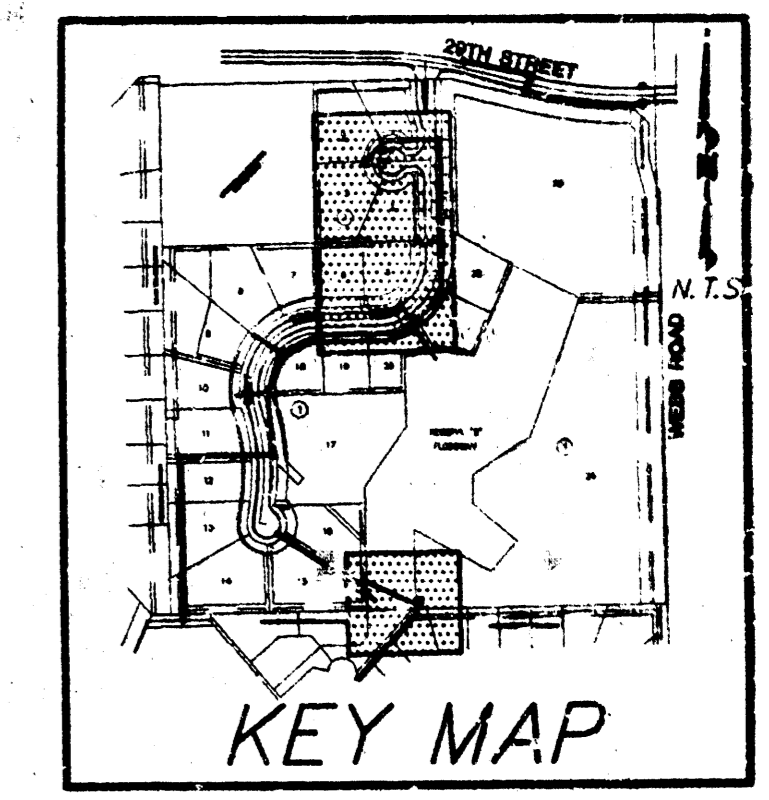
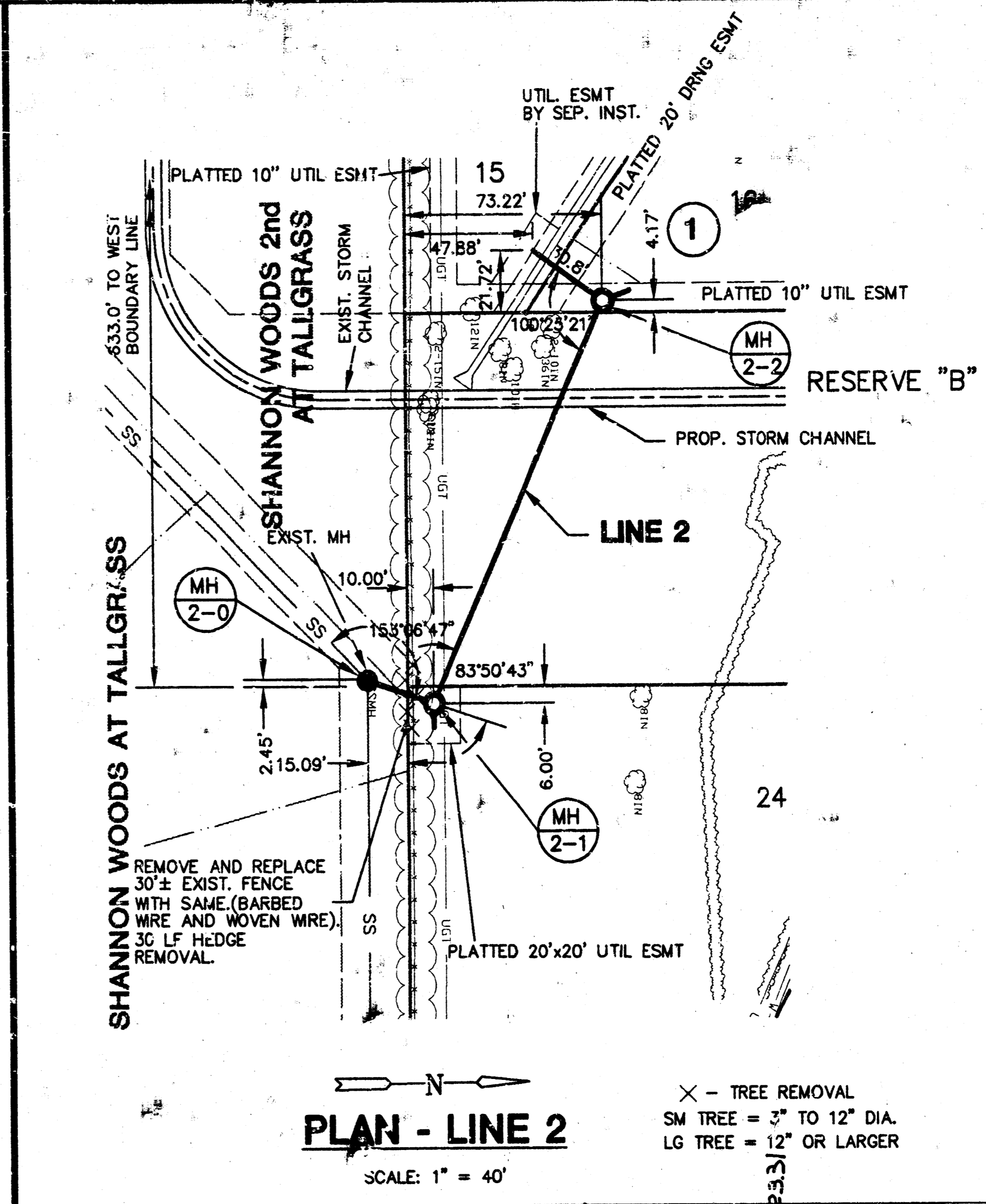
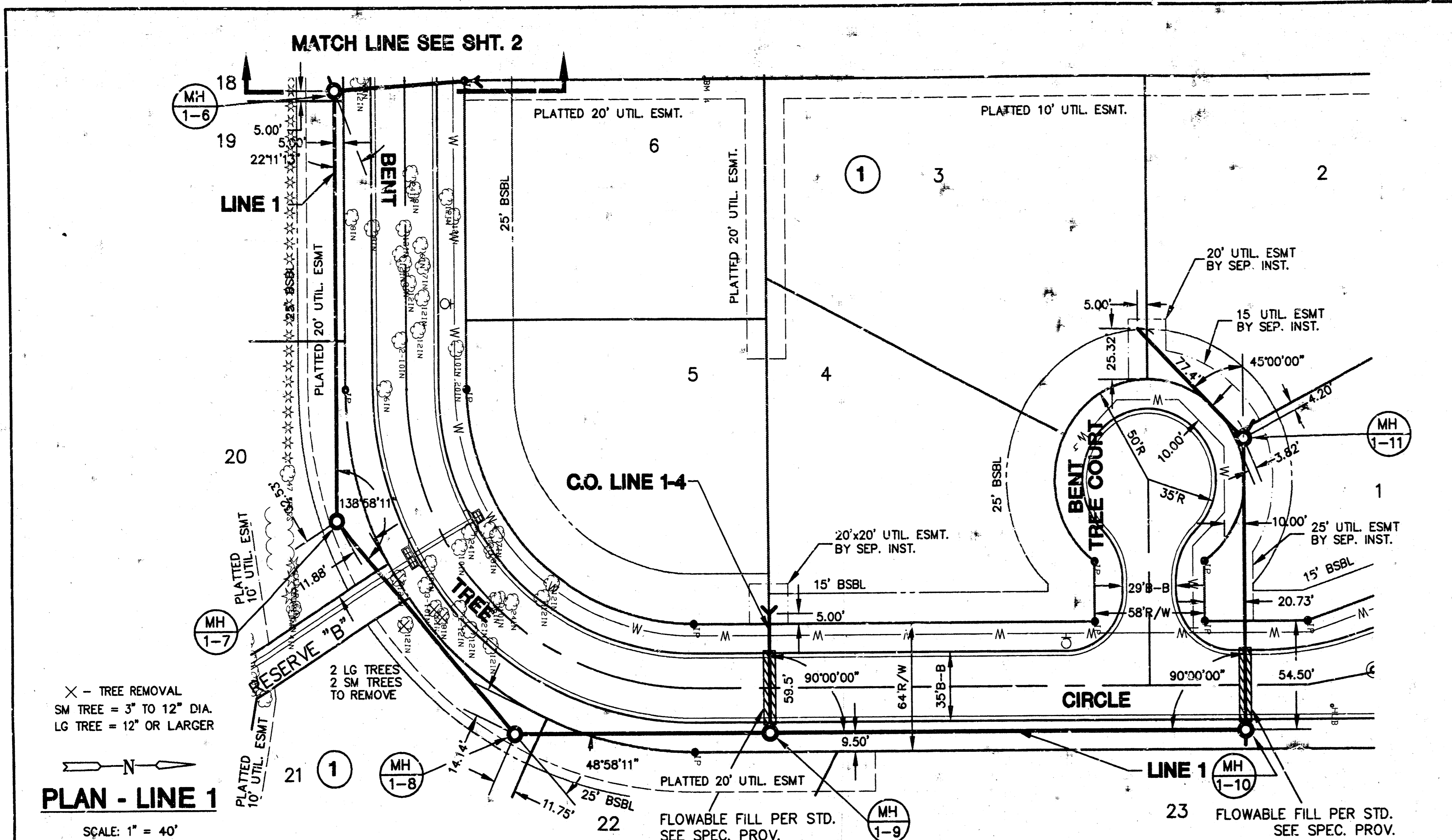
- BM #1 "T" CUT ON S.E. CORNER OF RCB UNDER WEBB ST. 605' S. & 72' E. OF SEC. COR. NEAR 29TH AND WEBB. ELEV. = 219.65
- BM #2 "T" CUT ON S. CURB OF 29TH ST. N. @ C/L OF CYPRESS ST. TO THE NORTH. ELEV. = 222.94
- BM #3 "T" CUT ON N.W. CORNER OF INLET ON N. SIDE OF 29TH 100' E. OF C/L BENT TREE CIRCLE. ELEV. = 222.99
- BM #4 SPIKE STEP IN S.E. FACE OF COR. FENCE POST. 32' S. & 1' W. OF S.W. COR. LOT 3, BLK 1, FOX POINTE ADDITION. ELEV. = 223.04
- BM #5 TOP OF "T" POST 5.3' W. & 1.5' N. OF S.E. COR. OF LOT 12, BLK 1, FOX POINTE ADDITION. ELEV. = 215.36

AS BUILTS 4/29/94

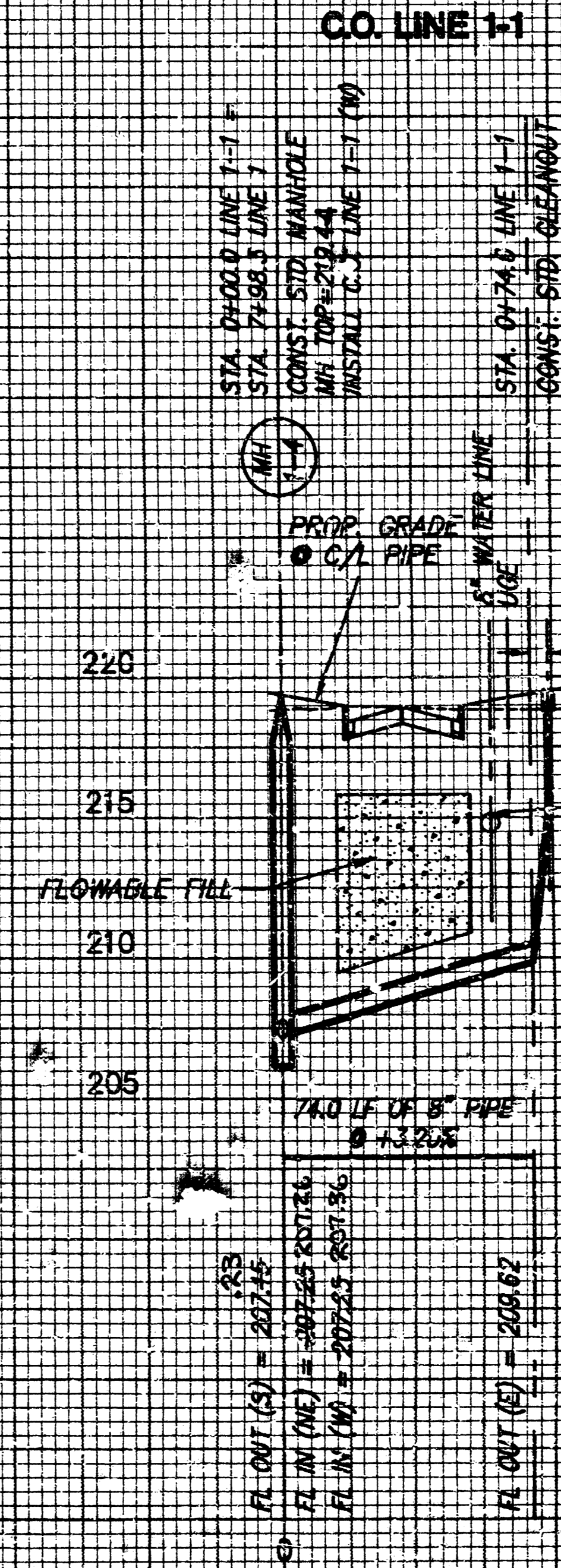
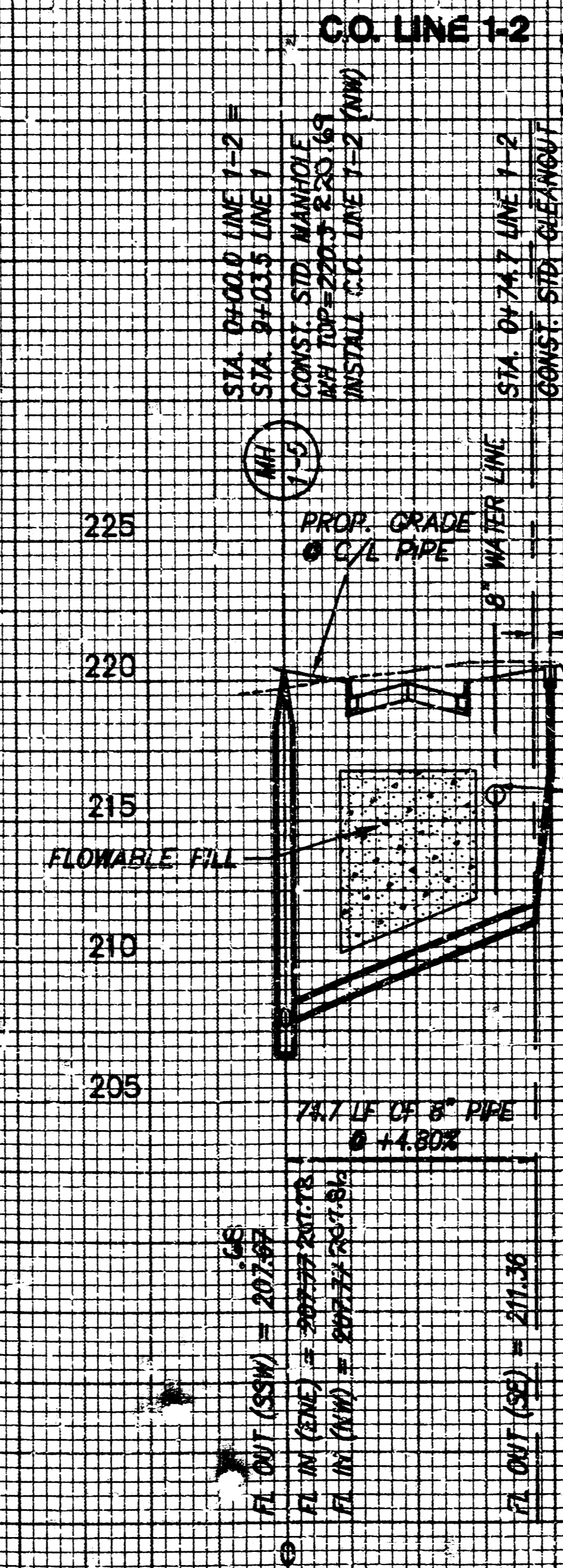
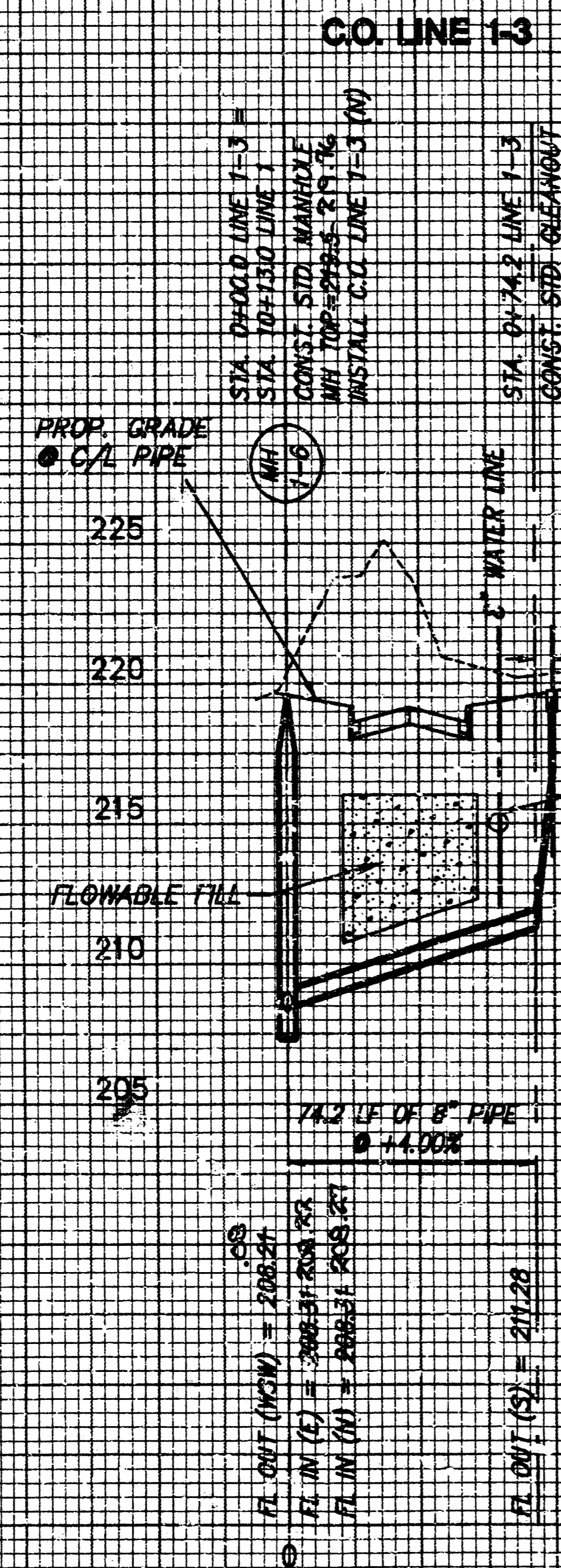
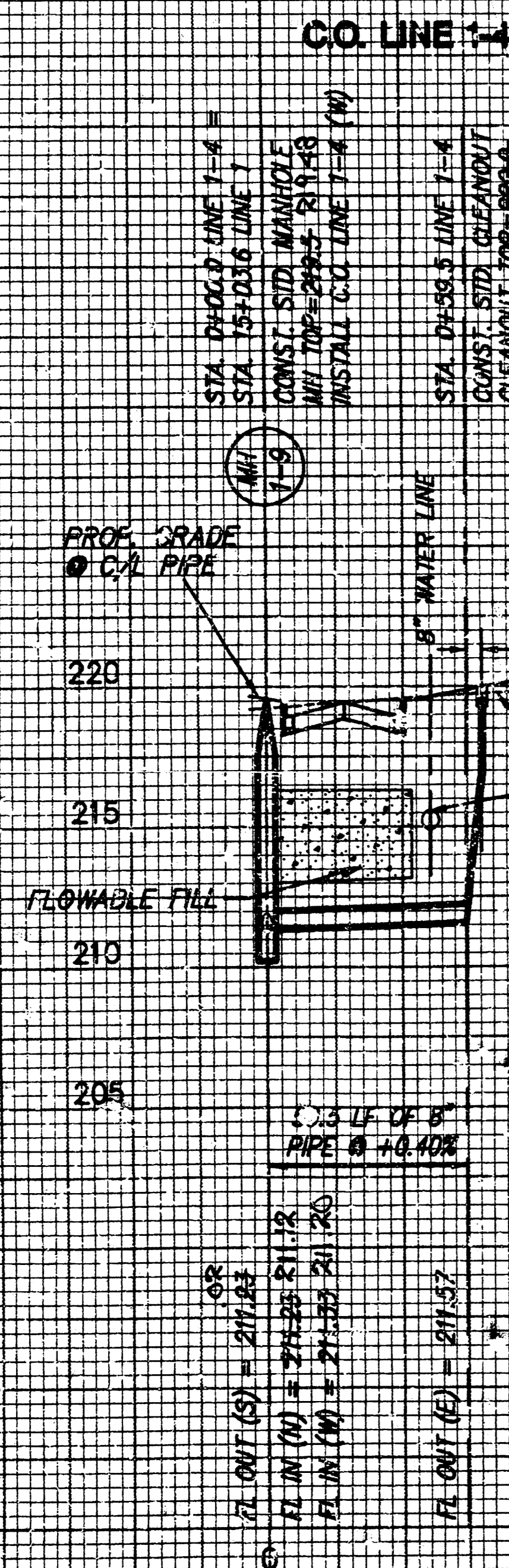
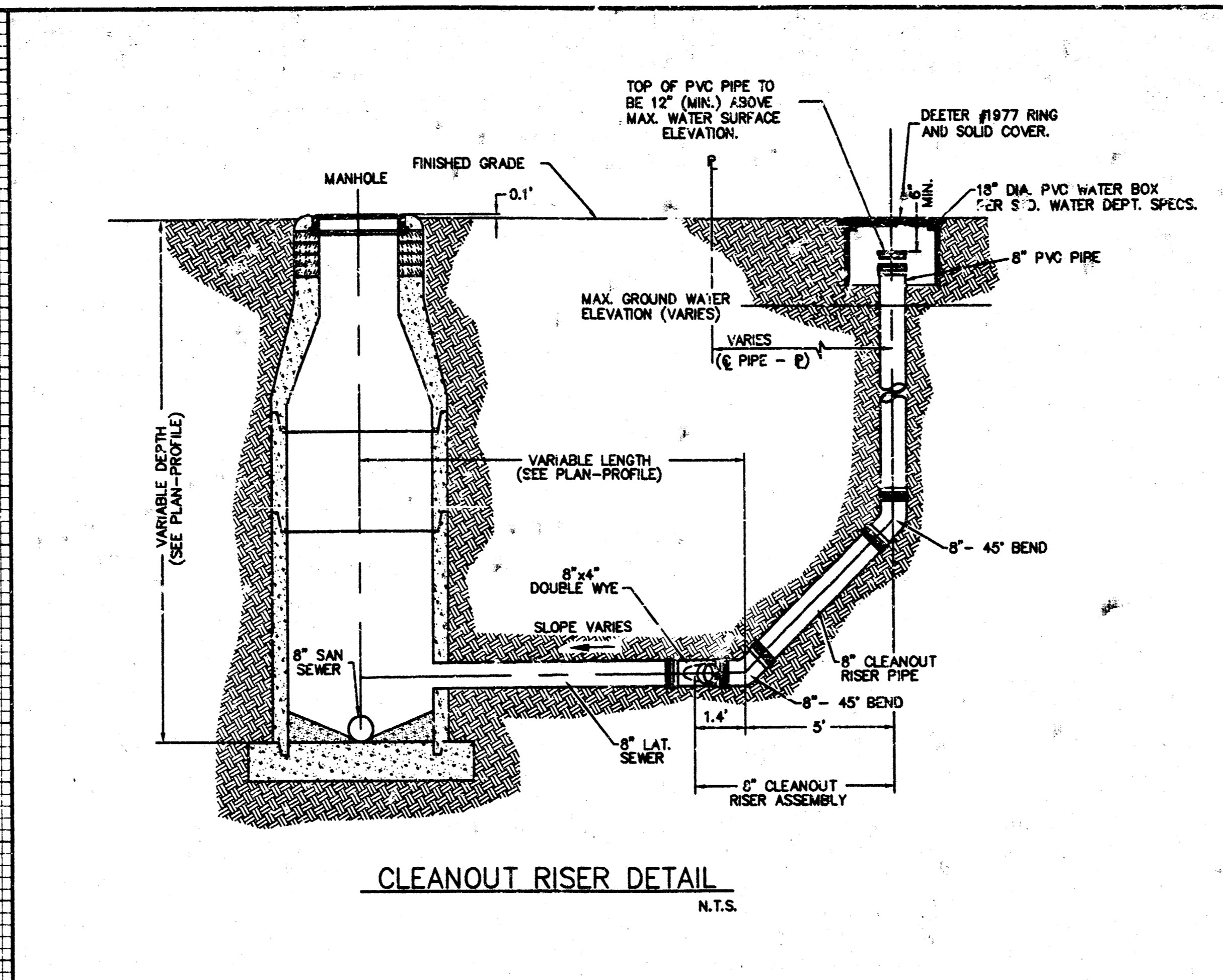


	FOX POINTE	Design RSB
	SANITARY SEWER PLANS	Drawn by RSB
MID-KANSAS ENGINEERING CONSULTANTS INC. 3500 NORTH ROCK ROAD BUILDING #300 WICHITA, KANSAS 67226		Checked by KB
(316) 36-5566		Date 9/93
Sheet 1		Job no. 83-26-252-B
of 6		



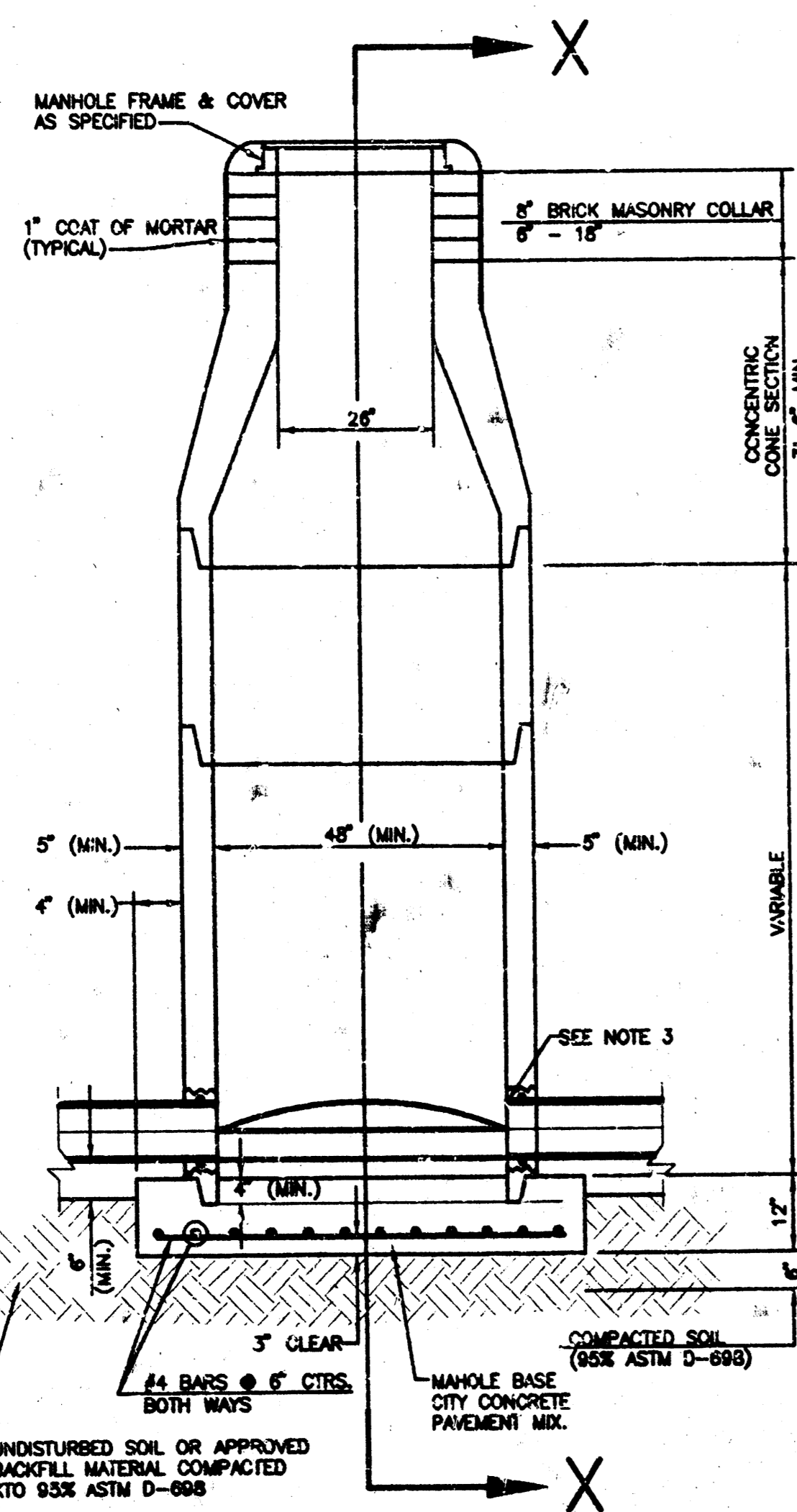


PROFILE - C.O. LINE
1-1, 1-2, 1-3, 1-4
HORIZONTAL SCALE: 1" = 40'
VERTICAL SCALE: 1" = 5'

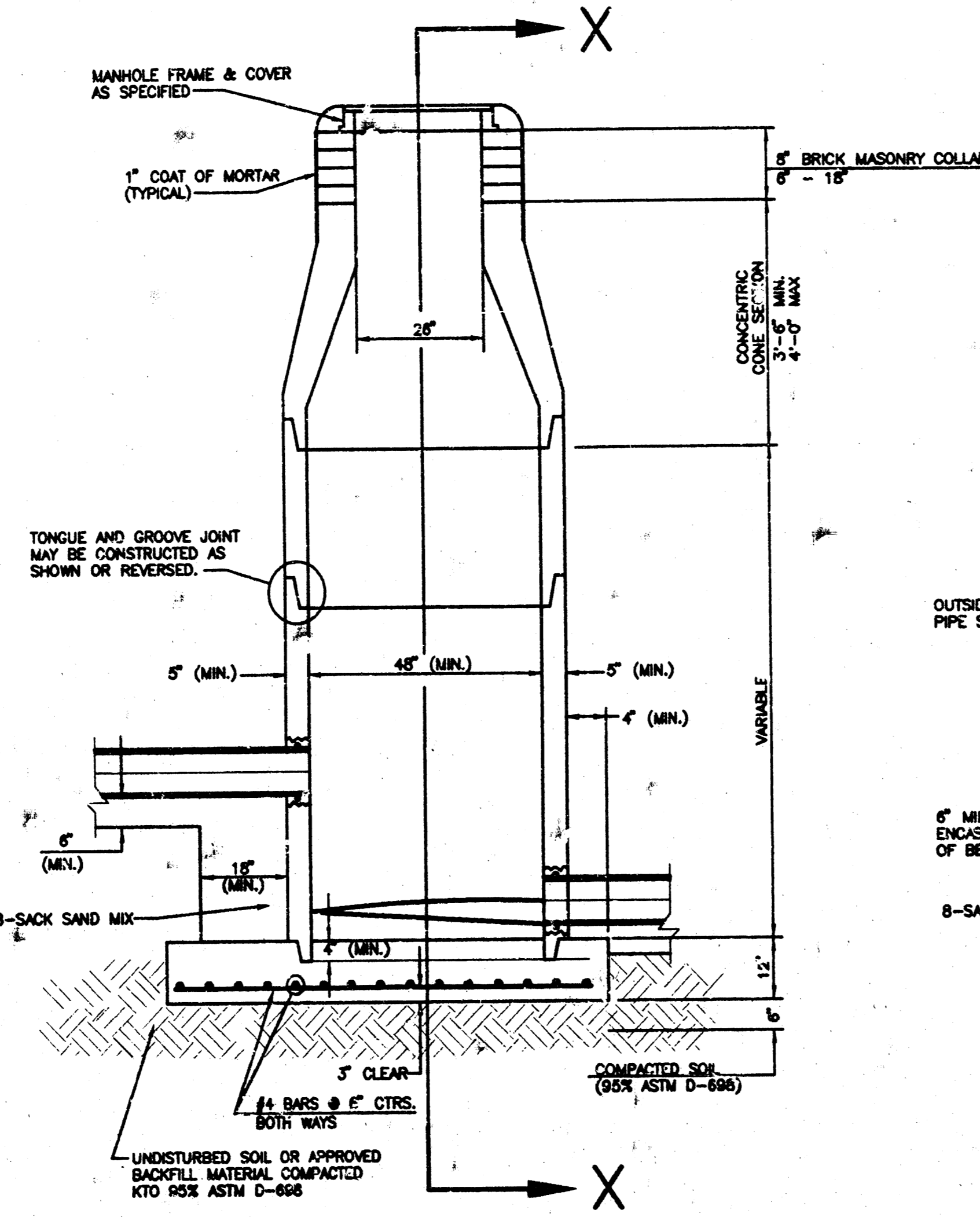


SEWER APPURTENANCES DETAILS

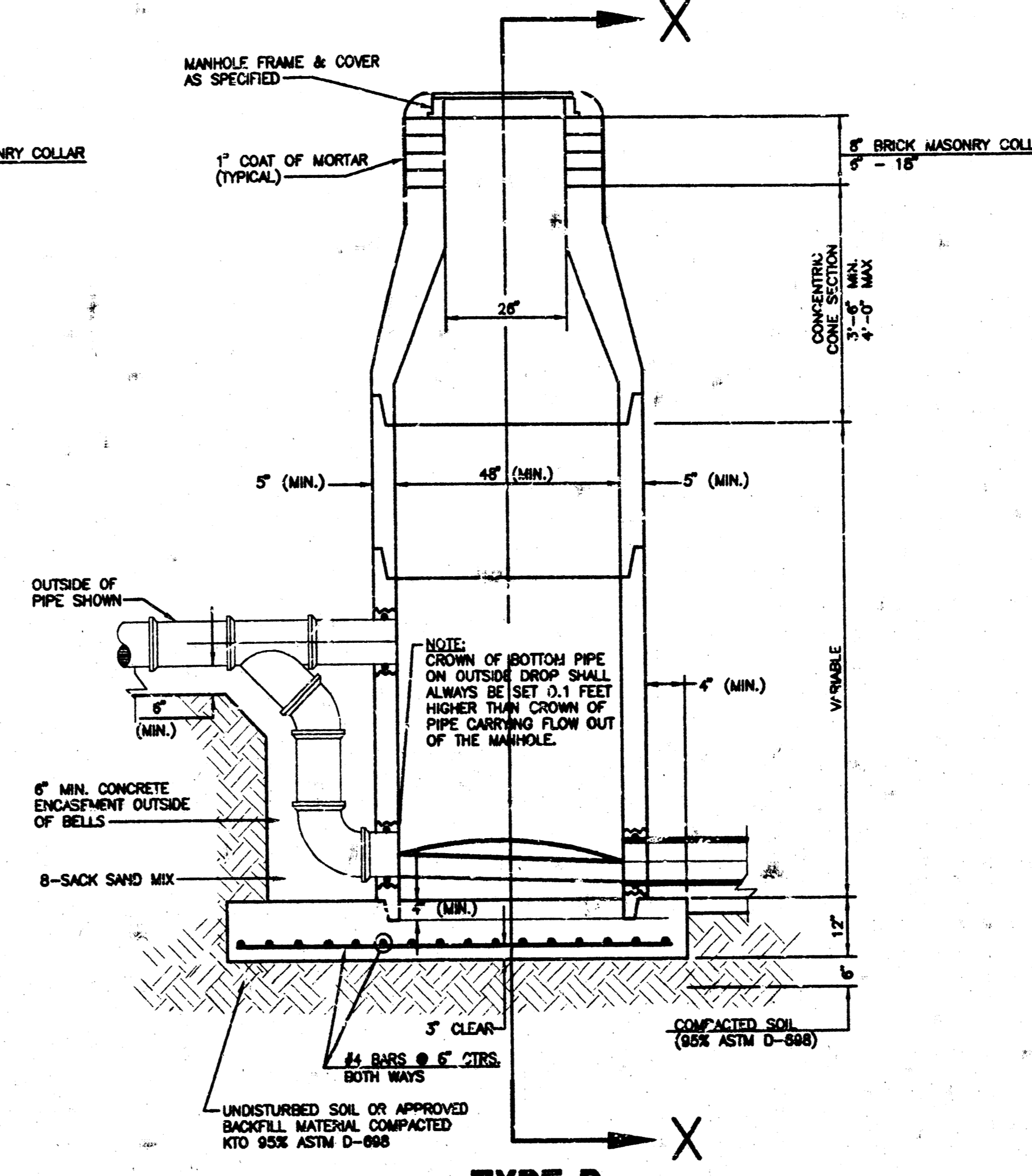
ADOPTED AS STANDARD DESIGN
BY
CITY OF WICHITA



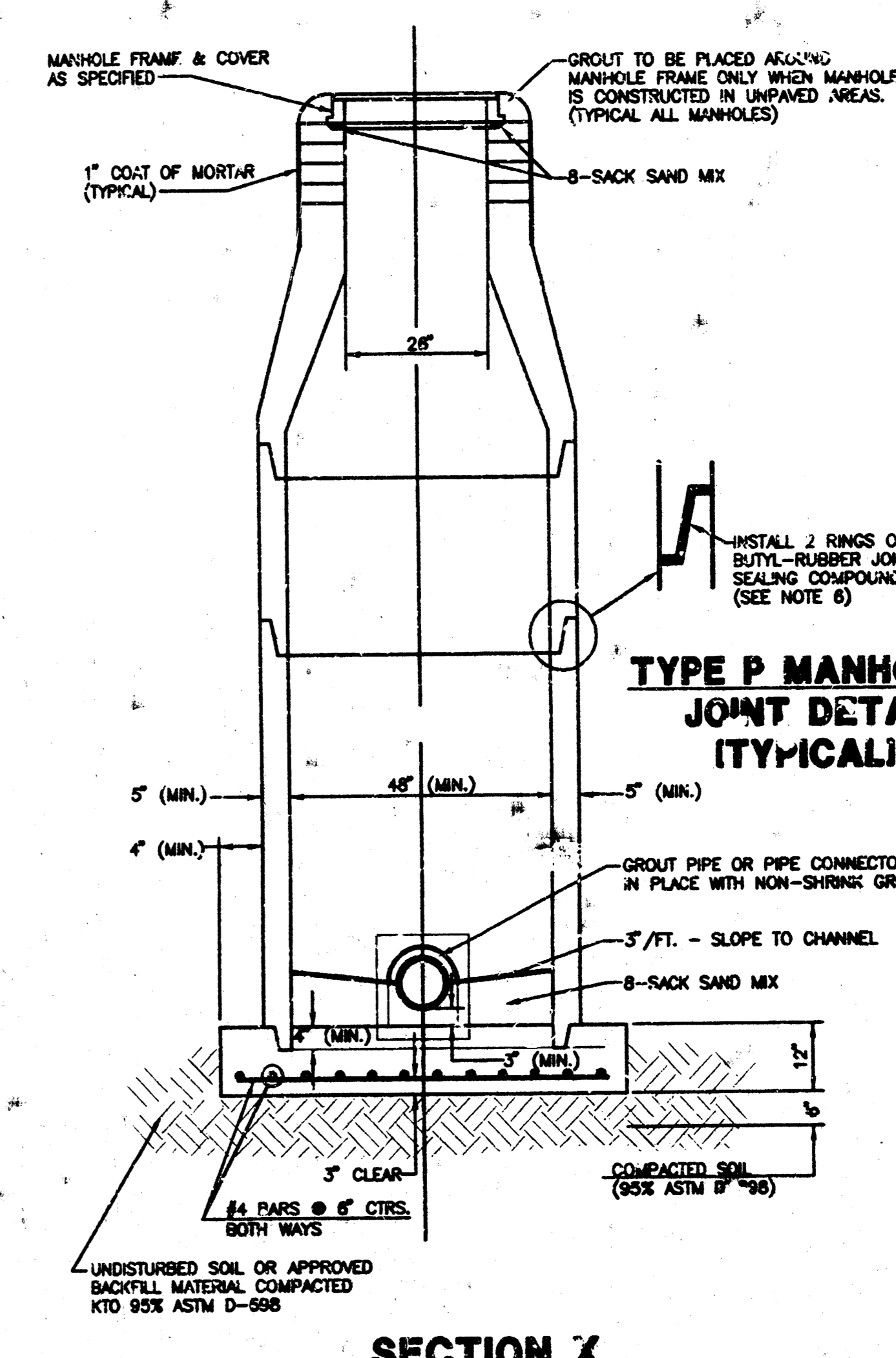
**TYPE P
STANDARD MANHOLE**



**TYPE P
INSIDE DROP MANHOLE**



**TYPE P
OUTSIDE DROP MANHOLE**



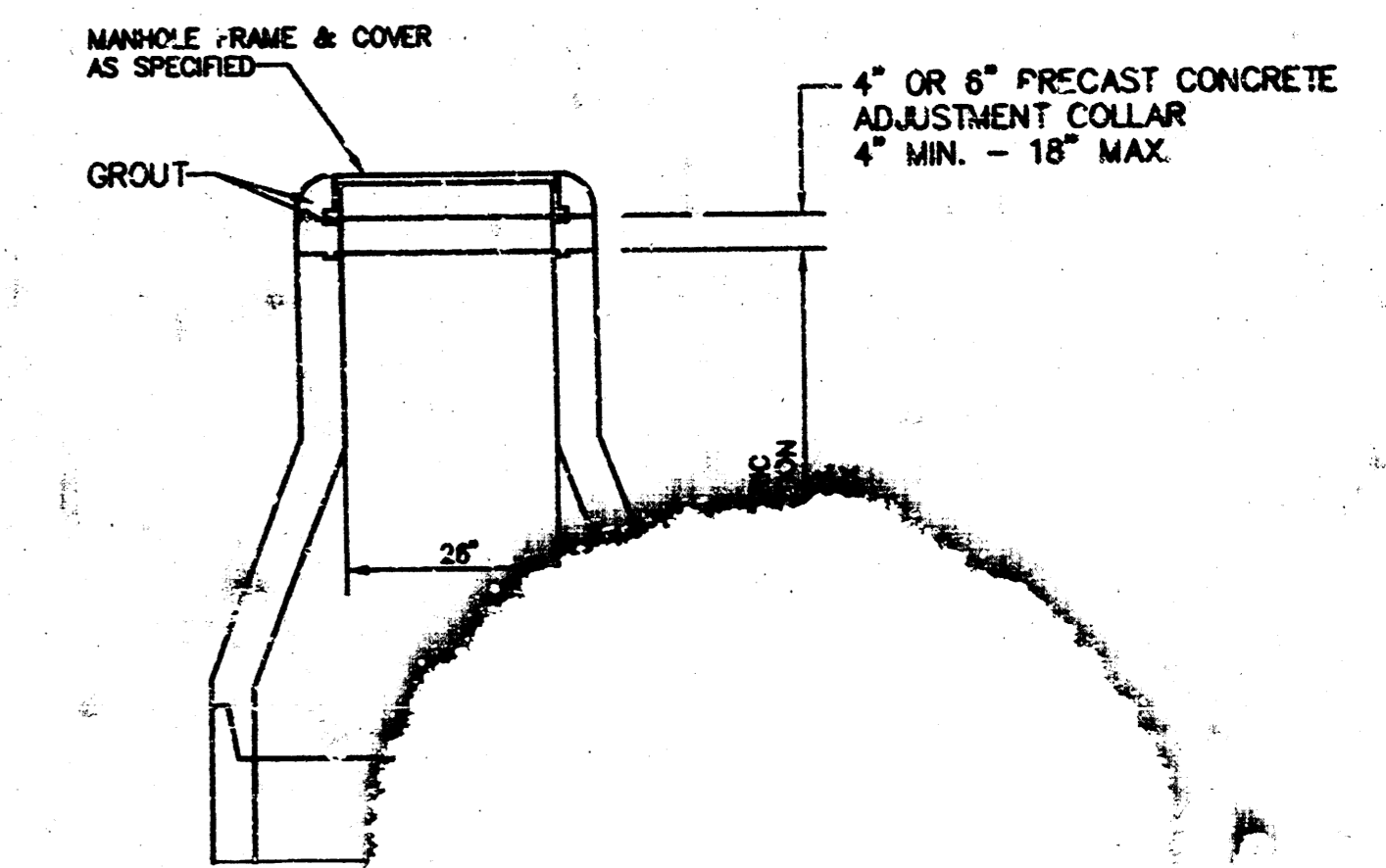
**SECTION X
(TYPICAL)**

GENERAL NOTES

- ALL PRECAST CONCRETE MANHOLE SECTIONS SHALL CONFORM TO THE LATEST REVISIONS OF A.S.T.M. C476 AS MODIFIED BY THE SPECIFICATIONS.
- NON-SHRINK GROUT SHALL BE NON-METALLIC TYPE.
- APPROVED FLEXIBLE WATERSTOP GASKETS SHALL BE INSTALLED TO JOIN THE SEWER TO THE MANHOLE WALL WHEN A.B.S. COMPOSITE PIPE OR P.V.C. PIPE IS USED. FOR OTHER TYPES OF PIPE THE SEWER SHALL BE GROUTED IN PLACE WITH NON-SHRINK GROUT. THE SEWER PIPE SHALL BE SUPPORTED WITH CONCRETE ENCASEMENT A MINIMUM OF 3 FEET FROM THE MANHOLE WALL AND TO THE FIRST JOINT FOR V.C.P. SUCH THAT THE JOINT REMAINS FLEXIBLE.
- ALL INSIDE SURFACES OF THE CONCRETE MANHOLE WHICH WOULD BE EXPOSED TO SEWER GAS SHALL BE COATED WITH 2 COATS TENECC SERIES 66 HI-BUILD EPOXOLINE, DRY THICKNESS OF 8 MILS (MIN.).
- EXTERIOR MANHOLE WALLS SHALL BE COATED WITH 1 COAT MOBILARMA 633 BITUMINUS COATING.
- JOINT SEALING COMPOUND SHALL BE KENT SEAL NO. 2 OR APPROVED EQUAL.
- PRECAST MANHOLES SHALL BE SET AT LEAST 4 INCHES INTO THE MANHOLE BASE.
- TOP OF MANHOLE FLOOR SLAB SHALL BE AT LEAST 3 INCHES BELOW THE FLOW LINE OF THE OUTLET PIPE TO INSURE SUFFICIENT MINIMUM THICKNESS OF SHAPED INVERT.
- LIFTING HOLES SHALL BE FILLED WITH NON-SHRINK GROUT AND THE INTERIOR SURFACE COATED AS SPECIFIED.
- MORTAR USED IN MASONRY CONSTRUCTION SHALL CONTAIN 8 SACKS OF CEMENT PER CUBIC YARD. CONCRETE USED IN MANHOLE BASES SHALL CONFORM TO THE REQUIREMENTS OF CONCRETE FOR CONCRETE PAVEMENT CONSTRUCTION AS SPECIFIED IN THE CITY STANDARD PAVING SPECIFICATIONS USING CITY CONCRETE PAVEMENT MIX WITHOUT AIR ENTERING ADMIXTURE. MORTAR SHALL BE PLACED AROUND THE MANHOLE RING AS SHOWN ON THE DRAWINGS WHEN MANHOLES ARE CONSTRUCTED IN UNPAVED AREAS. MANHOLES CONSTRUCTED WHERE PIPE SIZES ARE SMALLER THAN 24" SHALL HAVE AN INSIDE DIAMETER OF 4". MANHOLES CONSTRUCTED WHERE PIPE SIZES ARE 24" OR LARGER SHALL HAVE AN INSIDE DIAMETER OF 5". COMPLETED MANHOLE SHALL BE WITHOUT LEAKS AND WATER TIGHT.

PRECAST MANHOLE NOTES

- REINFORCING STEEL SHALL BE INSTALLED IN THE MANHOLE BASES AND SHALL CONSIST OF NO. 4 BARS PLACED ON 6" CENTERS IN BOTH DIRECTIONS. THE MANHOLE BASE REINFORCEMENT SHALL BE PLACED AT LEAST 3" ABOVE THE BOTTOM OF THE MANHOLE BASE. ALL COSTS FOR FURNISHING AND INSTALLING REINFORCING STEEL SHALL BE INCLUDED IN THE UNIT PRICE BID FOR THE MANHOLE.
- OPENINGS SHALL BE CUT INTO THE MANHOLE WALL WHEN OUTSIDE DROPS ARE CONSTRUCTED ON EXISTING MANHOLES. SUCH OPENINGS CUT INTO EXISTING MANHOLES SHALL BE AS SMALL AS PRACTICAL TO FACILITATE INSTALLING AND GROUTING THE NEW PIPE IN PLACE. WATERSTOP GASKETS SHALL BE USED WITH P.V.C. AND A.B.S. COMPOSITE PIPE. THE NEW PIPE SHALL BE GROUTED INTO THE OPENING USING AN APPROVED NONSHRINK GROUT FOR THE FULL MANHOLE WALL THICKNESS. THE EXTERIOR OF THE COMPLETED CONNECTION SHALL BE SEALED WITH AN APPROVED BITUMINOUS COATING SUCH THAT THE CONNECTION WILL BE WATER TIGHT. FLOOR OF MANHOLE SHALL BE MODIFIED TO FORM NEW FLOW CHANNEL FOR THE NEW CONNECTION AS INDICATED BY THE DRAWING. THIS WORK, INCLUDING MODIFICATION OF MANHOLE FLOOR, SHALL BE PAID FOR AT THE UNIT PRICE BID FOR OUTSIDE DROP STACK CONSTRUCTED ON EXISTING MANHOLE.
- THE FLOORS OF ALL MANHOLES SHALL BE SHAPED WITH FLOW CHANNELS SUCH THAT THE MANHOLES WILL BE SELF CLEANING AND FREE OF AREAS WHERE SOLIDS COULD BE DEPOSITED AS SEWAGE FLOWS THROUGH THE MANHOLE FROM ALL INLET PIPES TO THE OUTLET PIPE. FLOW CHANNELS SHALL BE FORMED TO MATCH THE BOTTOM HALVES OF THE INFLOWING PIPES AND THE OUTFLOWING PIPE AS SHOWN BY THE DRAWINGS EXCEPT FOR INSIDE DROP MANHOLES. FLOW CHANNELS FOR INSIDE DROP MANHOLES SHALL BE CONSTRUCTED AS INDICATED BY THE DRAWING. MANHOLE FLOORS SHALL HAVE SLOPES OF 3 INCHES PER FOOT IN THE AREAS OUTSIDE OF THE FLOW CHANNELS SLOPED TOWARD THE FLOW CHANNELS. PIPES LAID THROUGH MANHOLES SHALL HAVE THE TOP HALF REMOVED TO NEAT LINES FOR THE FULL INSIDE DIAMETER OF THE MANHOLE. MANHOLE FLOOR SHALL THEN BE SHAPED AROUND THE BOTTOM HALF OF THE PIPE WHICH FORMS THE FLOW CHANNEL.
- PIPES INSTALLED WITHIN THE EXCAVATION MADE FOR THE MANHOLE SHALL BE CRADLED WITH CONCRETE TO THE LIMITS OF THE MANHOLE EXCAVATION. WHEN CLAY PIPE IS USED, THE CRADLE SHALL EXTEND TO THE FIRST JOINT OUTSIDE THE MANHOLE. THE CRADLE SHALL BE TERMINATED AT THE CLAY PIPE JOINT IN A MANNER WHICH WILL MAINTAIN THE FLEXIBILITY OF THE JOINT. COST OF CRADLE WITHIN MANHOLE EXCAVATION OR TO CLAY PIPE JOINTS ADJACENT TO MANHOLE SHALL BE INCLUDED IN THE UNIT PRICE BID FOR THE MANHOLE.
- MANHOLE COVER CASTINGS AND MANHOLE FRAME CASTINGS SHALL CONFORM TO THE REQUIREMENTS AS INDICATED IN THE STANDARD SPECIFICATIONS AND AS SHOWN IN THE STANDARD DETAIL DRAWING.
- THE VERTICAL DROP IN INSIDE DROP MANHOLES SHALL NOT EXCEED 4' FOR INFLOWING PIPES SIZED 12" OR SMALLER AND 2' FOR INFLOWING PIPES LARGER THAN 12". THE CROWNS OF INFLOWING PIPES SHALL NEVER BE SET LOWER THAN THE CROWN OF THE OUTFLOWING PIPE.
- STANDARD MANHOLES AND STANDARD INSIDE DROP MANHOLES SHALL BE BID AS STANDARD MANHOLES FOR THE TYPE AND DIAMETER INDICATED. OUTSIDE DROP MANHOLES SHALL BE BID AS STANDARD OUTSIDE DROP MANHOLES FOR THE TYPE AND DIAMETER INDICATED. ALL MANHOLE DIAMETERS WILL BE 4' UNLESS INDICATED OTHERWISE.
- A BRICK MASONRY COLLAR SHALL BE INSTALLED BETWEEN THE CAST IRON FRAME AND THE CONCENTRIC CONE. THE COLLAR WILL HAVE 8" WALLS AND A VERTICAL HEIGHT OF 6" MINIMUM AND 18" MAXIMUM. A 1" COAT OF MORTAR WILL BE PLASTERED ON THE OUTSIDE OF THE COLLAR.



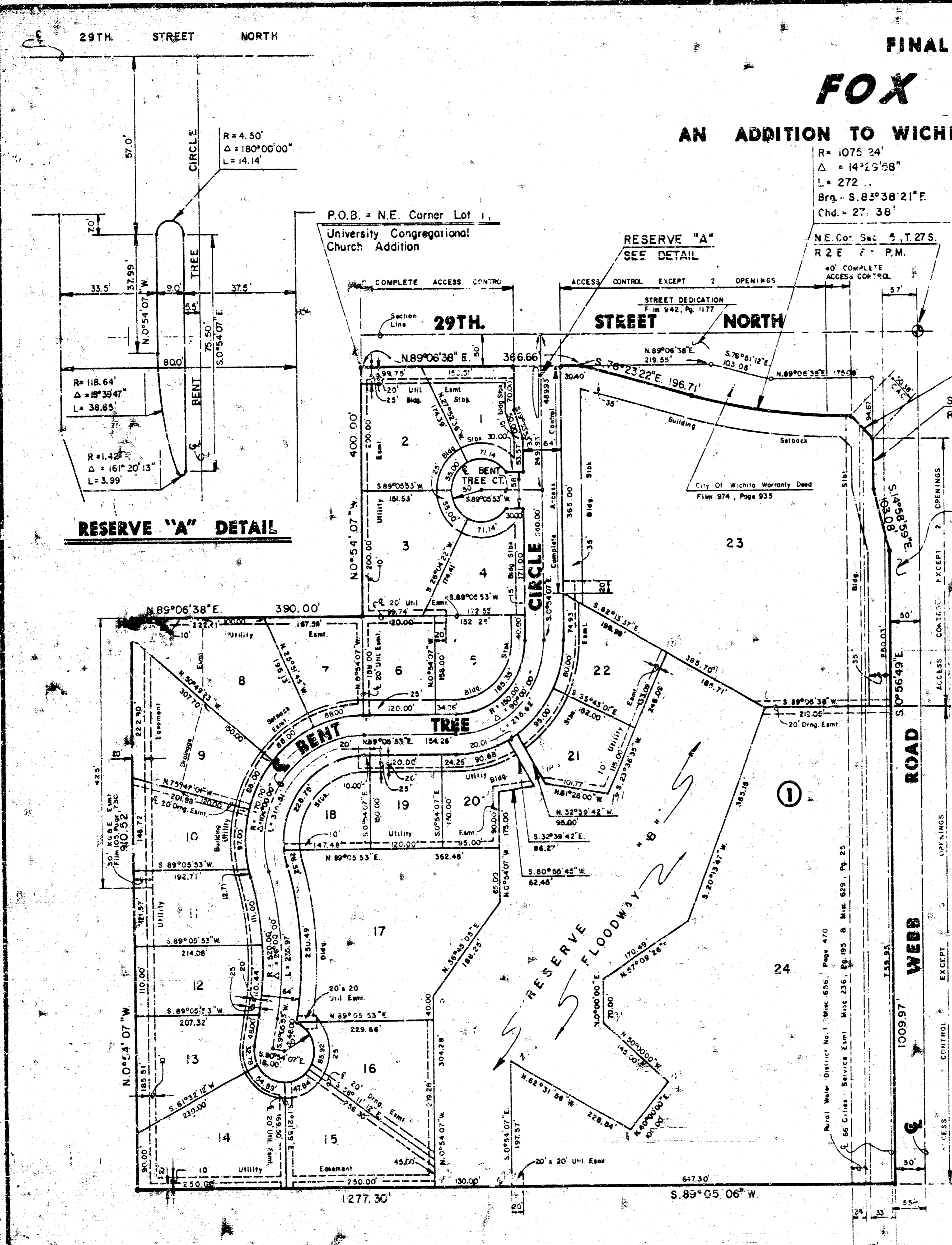
**ALTERNATE
IN UNPAVED**

	MANHOLE DETAILS		Design GA Drawn by AM Checked by GA Date 7/92 Job no. MHD115
	MID-KANSAS ENGINEERING CONSULTANTS, INC. 3500 NORTH ROCK ROAD BUILDING #800 WICHITA, KANSAS 67226		Sheet 5 of 6

(316) 636-5566

MHD115

E 7-30



FINAL PLAT OF
FOX POINTE
AN ADDITION TO WICHITA, SEDGWICK COUNTY, KANSAS

R = 1075.24'
Δ = 142°5'58"
L = 272.00'
Brg. - S. 83°38'21" E
Chd. = 27.38'

NE. Cor. Sec. 5, T. 27 S.
R. 2 E. P.M.
40' COMPLETE ACCESS CONTROL

Scale: 1" = 100'

Lot	Block	Min. Pad Elev. (City Datum)	Max. Pad Elev. (USGS Datum)
16-20	1	217.0	1404.4
21-23	2	218.2	1405.6
24	1	214.0	1404.4

B.M. 1 Top Of Steel Fence Post 4.5' West Of The S.E. Corner Of Lot 24 Block 1.
Elev. = 222.33

B.M. 2 " " Cut On Top Of South Curb Of 29th Street No. At The E. Of Cypress (N.W. Cor Of University Congregational Church Add.
Elev. = 222.94

I, Kenneth H. Brington, a Civil Engineer and Registered Land Surveyor in Kansas, do hereby certify that I have been in responsible charge of surveying and platting of "FOX POINTE" an addition to Wichita, Sedgwick County, Kansas, into Lots, Block, Streets, and Reserves the same being accurately set forth in the accompanying plat and described herein:

A tract of land lying in Government Lot 1, Section 5, Township 27 South, Range 2 East of the 6th P.M., Sedgwick County, Kansas, more particularly described as follows:

Beginning at the Northeast corner of Lot 1, University Congregational Church Addition, an addition to Wichita, Sedgwick County, Kansas; thence N 89° 06' 38" E, 356.66 feet, parallel and 50' South of the North line of said Government Lot 1; thence S 76° 23' 22" E, 196.71 feet to a point on a curve to the left; thence along said curve 272.11 feet, said curve having a central angle of 142° 5' 58", a radius of 1075.24 feet and a long chord of 272.38 feet, bearing S 83° 38' 21" E; thence S 45° 00' 22" E, 50.38 feet; to a point lying 75.00 feet west of the East line of said Government Lot 1; thence S 00° 56' 49" E, 80.33 feet, parallel with the East line of said Government Lot 1 thence S 14° 58' 59" E, 103.08 feet to a point lying 50.00' west of the East line of said Government Lot 1; thence S 00° 56' 49" E, 1009.97 feet to the North line of Deer Run Addition, an addition to Wichita, Sedgwick County, Kansas; thence S 89° 05' 06" N, 1277.30 feet along the North line of said Deer Run Addition, to the East line of Wilderness 2nd Addition, an addition to Wichita, Sedgwick County, Kansas; thence N 00° 54' 07" W, 910.52 feet along the East line of said Wilderness 2nd Addition; thence N 89° 06' 38" E, 390.00 feet along the said South line of University Congregational Church Addition; thence N 00° 54' 07" W, 400.00 feet along said East line of University Congregational Church Addition to the point of beginning.

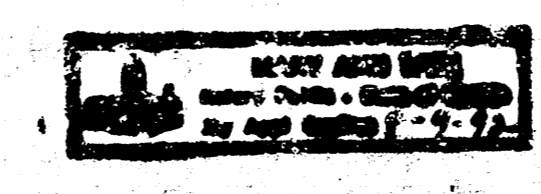
I hereby certify that the details of this plat are correct to the best of my knowledge and belief this 30 day of August 1988.

Kenneth H. Brington
Kenneth H. Brington, P.E., R.L.S. #926
Mid-Kansas Engineering Consultants, P.A.
3500 N. Rock Road, Building #80D
Wichita, Kansas 67226

Know all men by these presents that the undersigned property owners of the land as above set forth in the Land Surveyor's and Civil Engineer's Certificates, have caused the same to be surveyed and platted into Lots, a block, streets and reserves the same to be known as "FOX POINTE" an addition to Wichita, Sedgwick County, Kansas. The streets are hereby dedicated to and for the use of the public. The Reserves shall be owned and maintained by the homeowners Association. Reserve A is platted for landscaping and entry monuments. Reserve B is platted for drainage and related structures, floodway, walks, gazebos, landscaping, recreation facilities and picnic shelters. Easements for the construction and maintenance of public utilities and drainage as indicated on the accompanying plat are hereby granted. The floodway shall be the responsibility of the owners until such time as the governing jurisdiction exercising jurisdiction elects to assume the responsibility for the maintenance and improvement of the drainage, provided further, that no structure shall be constructed on or within said floodway, nor shall any fill, change of grade, creation of channel or other work be carried on without the permission of the City Engineer. All abutters right of access to or from 29th Street North over and across the North lines of Lots 1, 2 and 23, Block 1, are hereby granted to the City of Wichita, provided, however, Lot 23, Block 1 shall have access to 29th Street North at two (2) locations, all locations to be determined by the City Engineer. All abutters right of access to or from Webb Road over and across the East lines of Lots 23 and 24, Block 1, are hereby granted to the City of Wichita, provided, however that Lot 23, Block 1 shall have access to Webb Road at two (2) locations and Lot 24, Block 1 shall have access to Webb Road at three (3) locations, all locations to be determined by the City Engineer. Minimum pad elevations shall be as indicated on the face of the plat.

STATE OF KANSAS
SEDGWICK COUNTY ss:
Be it remembered that on this 29 day of August 1988, before me a Notary Public in and for said State and County, came Richard J. Hattrop, to me personally known to be the same person who executed the foregoing instrument of writing and duly acknowledged the execution of the same. In testimony whereof, I have hereunto set my hand and affixed my notarial seal the day and year above written.

Mary Ann Tate
Mary Ann Tate
My Appointment Expires: 8-9-92



Juanita E. Hattrop
Juanita E. Hattrop

STATE OF KANSAS
SEDGWICK COUNTY ss:

Be it remembered that on this 29 day of August 1988, before me a Notary Public in and for said State and County, came Juanita E. Hattrop, to me personally known to be the same person who executed the foregoing instrument of writing and duly acknowledged the execution of the same. In testimony whereof, I have hereunto set my hand and affixed my notarial seal the day and year above written.

Mary Ann Tate
Mary Ann Tate
My Appointment Expires: 8-9-92

We, the Mid Kansas Federal Savings & Loan Association, Mortgagees of the above described property, do hereby consent to the plat of "FOX POINTE"

MID KANSAS FEDERAL SAVINGS & LOAN ASSOCIATION
By: *Max L. Herzet*
Max L. Herzet, Senior Vice-President

STATE OF KANSAS
SEDGWICK COUNTY ss:

Be it remembered that on this 30 day of August 1988, before me a Notary Public in and for said State and County, came the Mid Kansas Federal Savings & Loan Association, Wichita, Kansas, by Max L. Herzet, Senior Vice-President to me personally known to be the same person who executed the foregoing instrument of writing and duly acknowledged the execution of the same. In testimony whereof, I have hereunto set my hand and affixed my notarial seal the day and year above written.

Karen L. Meyer
Karen L. Meyer
My Appointment Expires: 9/8/90

This plat of "FOX POINTE" has been submitted to and approved by the Wichita-Sedgwick County Metropolitan Area Planning Commission, Wichita, Kansas.

Dated this 18 day of August 1988.

WICHITA-SEDGWICK COUNTY METROPOLITAN AREA PLANNING COMMISSION
Chairman
Secretary
Martin S. Krout

This plat approved and all dedications shown hereon, if any, are accepted by the City Council of the City of Wichita, Kansas, this 18 day of August 1988.

Deputy City Clerk
Deputy City Clerk
Date E. Res

Entered on transfer record this 6 day of October 1988.
County Clerk
County Clerk

STATE OF KANSAS
SEDGWICK COUNTY ss:

Be it certified that this instrument was filed for record in the Register of Deeds office this 5th day of October 1988, at 2:30 P.M.

Register of Deeds
Register of Deeds
Deputy