

SANITARY SEWER EXTENSION TO SERVE
HEDGECLIFF 3rd ADDITION
Lat. 115, War Industries Sewer

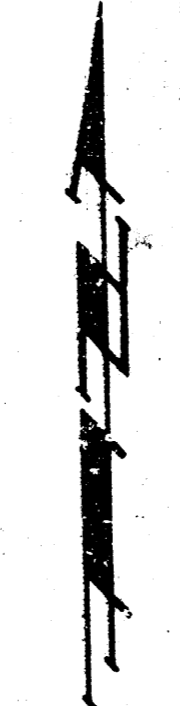
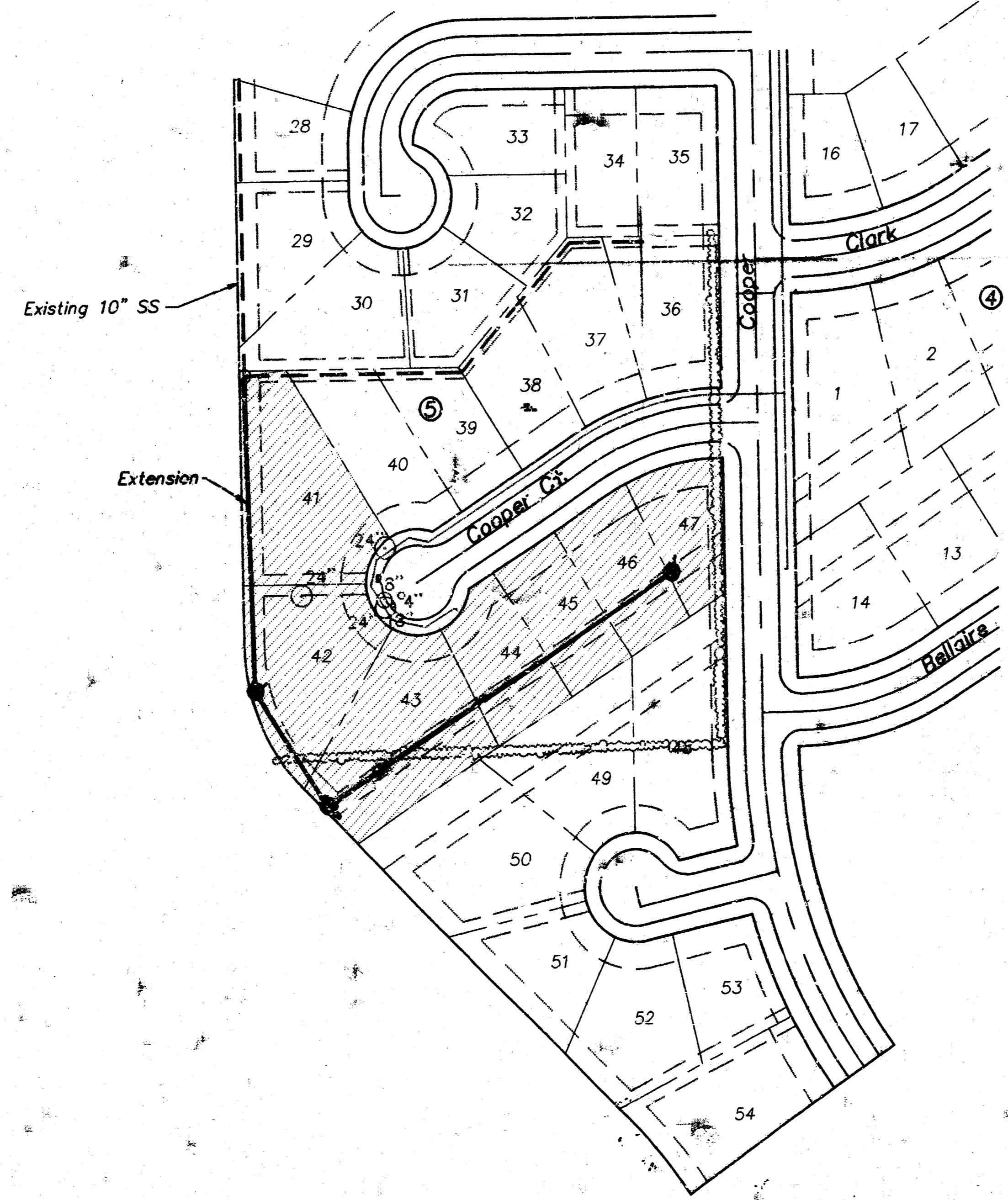
Project No.
 468-76-245-82188-000-000-001

CITY OF WICHITA, KANSAS
 Michael E. Lindebak City Engineer

Index Code: 741082

General Notes

1. The contractor shall be responsible for preserving property irons. The Contractor will be required to re-establish any property irons which are damaged or destroyed by his construction operations. Such irons shall be re-established by a licensed land surveyor in accordance with state laws.
2. The contractor shall grade the sanitary sewer alignment to the profile and elevations shown on the easement grading plan. All cost for grading shall be subsidiary to the project.



SCALE:
 1" = 100'

Index

1. Title Sheet
2. Plan - Profile Sheet
3. Detail Sheet
4. Easement Grading Plan
5. Plat Hedgecliff 3rd Addition

Booked
 9-25-92
 JKB
 for Plan



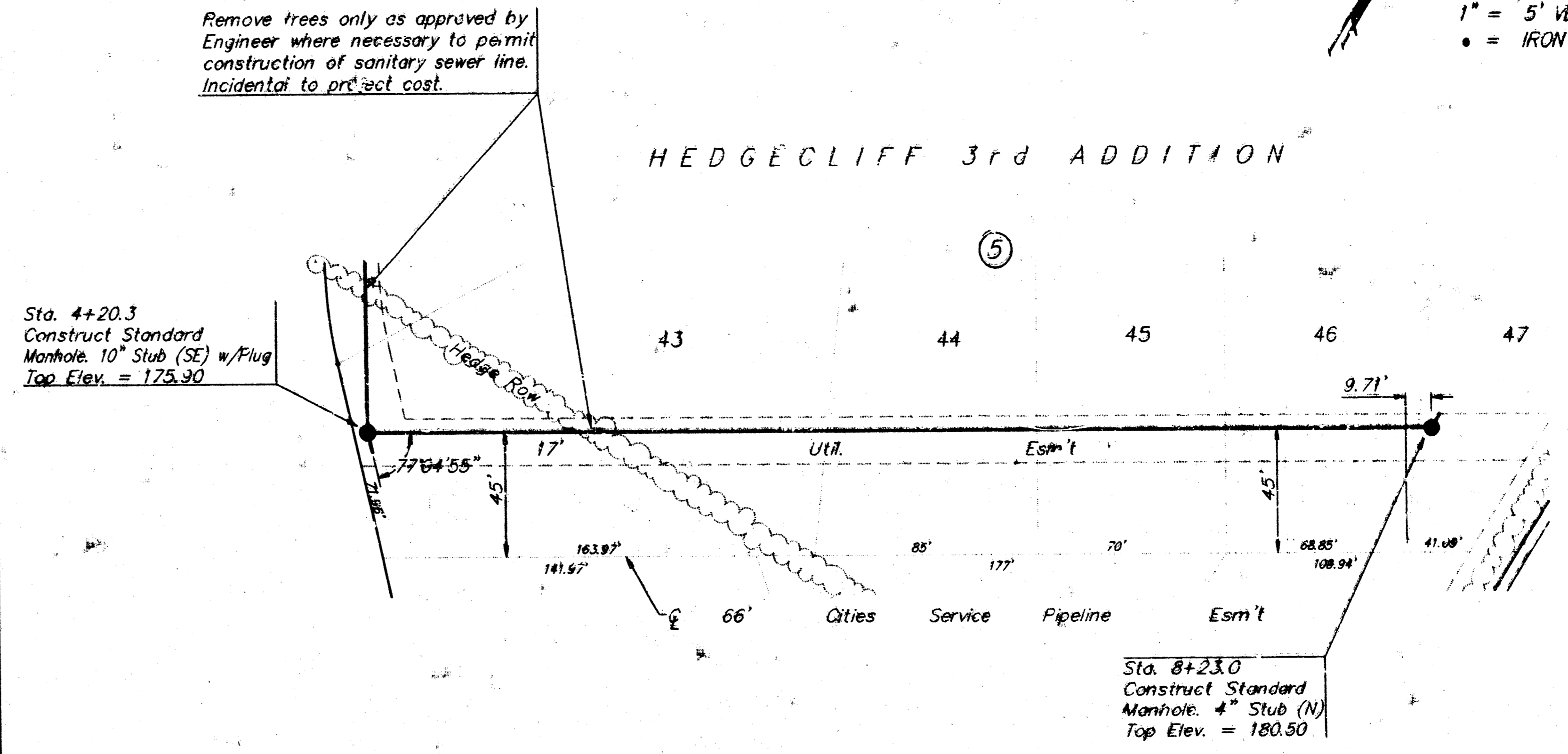
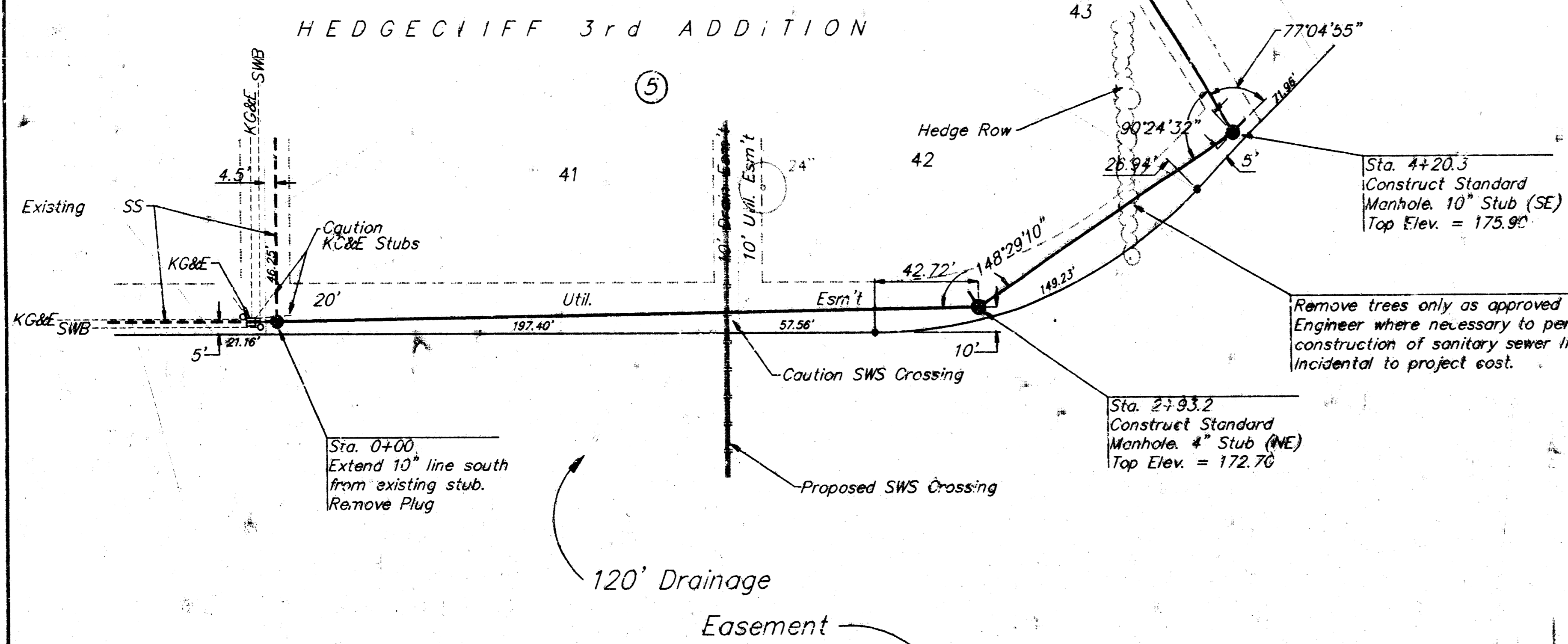
Benefit District

Bench Mark: "□" Cut on the E. end of the S.E. curb return, located at the intersection of Cooper & Clark. Elev. = 182.87

Bench Mark: "V" Notch on S. side of a sanitary sewer manhole rim, located in the N.W. Corner Lot 46, Block 5 Hedgecliff 3rd Addition. Elev. = 171.37

SCALE:
1" = 40' HORIZONTAL
1" = 5' VERTICAL
• = IRON

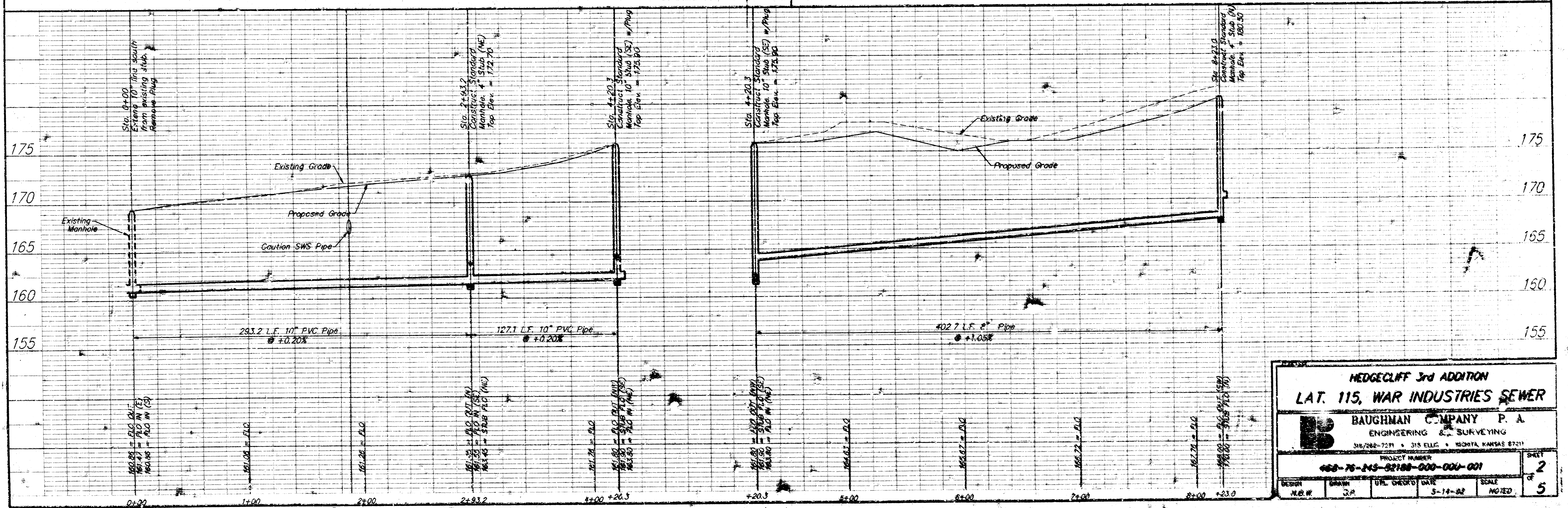
SCALE:
1" = 40' HORIZONTAL
1" = 5' VERTICAL
• = IRON



HEDGECLIFF 3rd ADDITION

RISER LOCATION TABLE

NUMBER	STATION	LOT	DIRECTION	L.F. 4" RISER	TOP ELEV.
1	5+60	43	LEFT	4.5	169.8
2	7+65	46	LEFT	4.5	171.8



HEDGECLIFF 3rd ADDITION
LAT. 115, WAR INDUSTRIES SEWER

BAUGHMAN COMPANY P.A.
ENGINEERING & SURVEYING
316/262-7271 • 315 ELLIOTT • WICHITA, KANSAS 67211

PROJECT NUMBER
68-76-145-32100-000-001

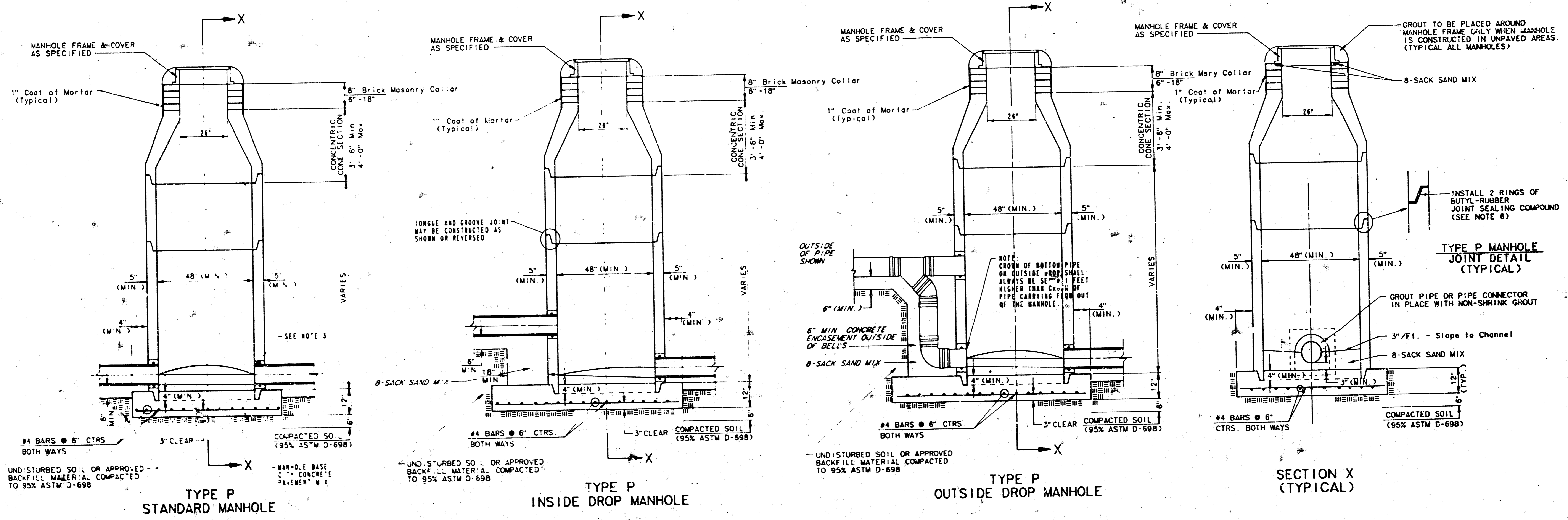
DESIGN: M.B.W. DRAWN: J.P. UPL. CHECKED: D.A.R. DATE: 5-14-82 SCALE: NO. 10' SHEET: 2 OF 5

SEWER APPURTENANCES DETAILS

ADOPTED AS STANDARD DESIGN

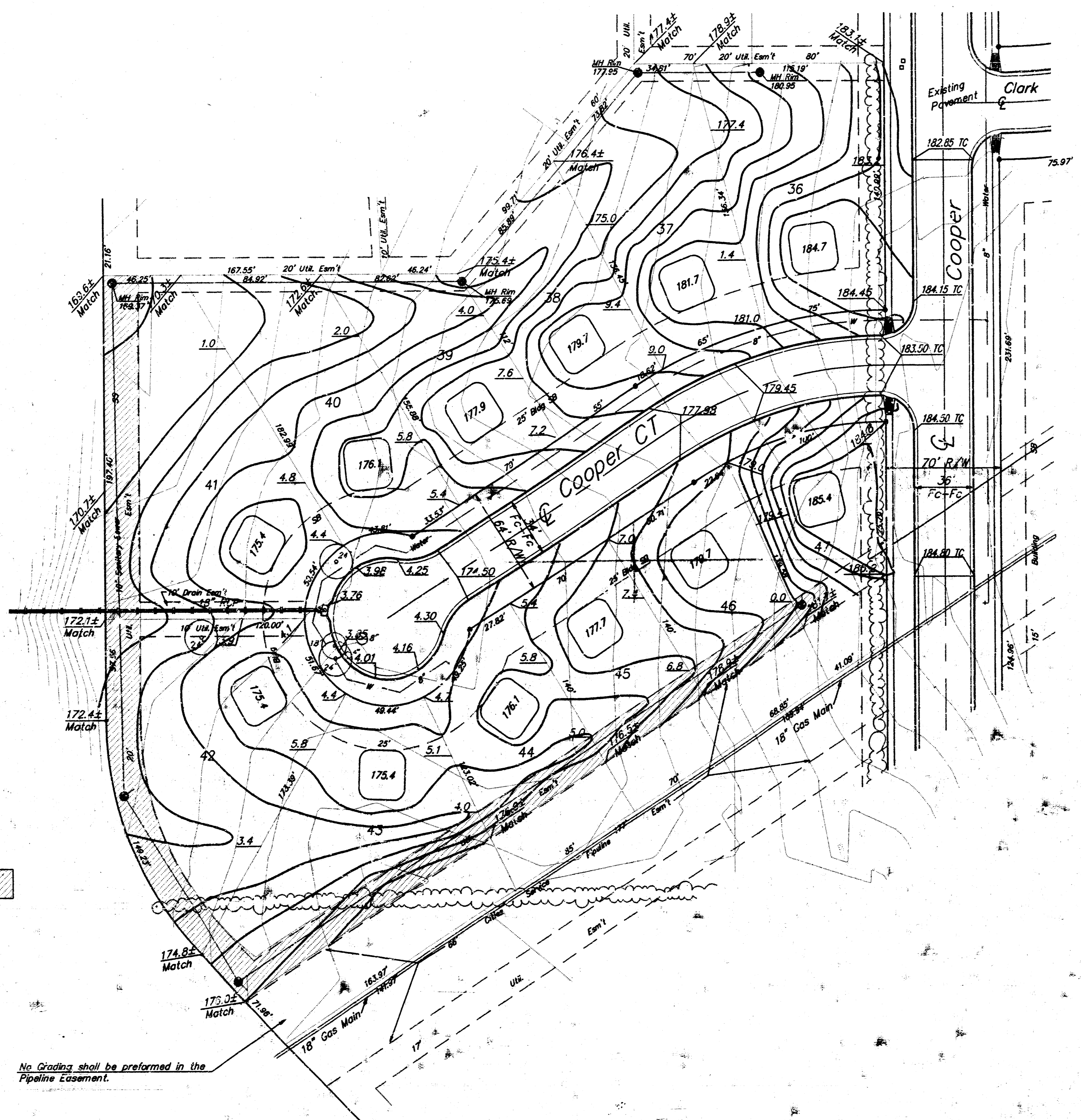
BY

CITY OF WICHITA



- GENERAL NOTES
- PRECAST MANHOLE NOTES
1. ALL PRECAST CONCRETE MANHOLE SECTIONS SHALL CONFORM TO THE LATEST REVISIONS OF A S I M C 1978 AS MODIFIED BY THE SPECIFICATIONS.
 2. NON-SHRINK GROUT SHALL BE NON-METALLIC TYPE.
 3. APPROVED FLEXIBLE WATERSTOP CASSETS SHALL BE INSTALLED TO JOIN THE SEWER TO THE MANHOLE WALL WHEN A B S COMPOSITE PIPE OR P V C PIPE IS USED. FOR OTHER TYPES OF PIPE THE SEWER PIPE SHALL BE GROUDED IN PLACE WITH NON-SHRINK GROUT. THE SEWER PIPE SHALL BE SUPPORTED WITH CONCRETE ENCASEMENT A MINIMUM OF 3 FEET FROM THE MANHOLE WALL AND TO THE FIRST JOINT FOR P V C SUCH THAT THE JOINT REMAINS FLEXIBLE.
 4. ALL INSIDE SURFACES OF THE CONCRETE MANHOLE WHICH WOULD BE EXPOSED TO SEWER GAS SHALL BE COATED WITH 2 COATS OF REPEC SERIES 66 NON-BUILD EPoxy RESIN DRY MIX GROUT OF 8 M S (MIN.)
 5. EXTERIOR MANHOLE BELLS SHALL BE COATED WITH 1 COAT OF POLYARMA 633 BITUMINOUS COATING.
 6. JOINT SEALING COMPOUND SHALL BE BENT SEAL NO 2 OR APPROVED EQUAL.
 7. PRECAST MANHOLES SHALL BE SET AT LEAST 4 INCHES INTO THE MANHOLE BASE.
 8. TOP OF MANHOLE FLOOR SLAB SHALL BE AT LEAST 3 INCHES BELOW THE FLOW LINE OF THE OUTLET PIPE TO INSURE SUFFICIENT MINIMUM THICKNESS OF SHAPED INVERT.
 9. LIFTING HOLES SHALL BE FILLED WITH NON-SHRINK GROUT AND THE INTERIOR SURFACE COATED AS SPECIFIED.
 10. MORTAR USED IN MASONRY CONSTRUCTION SHALL CONTAIN 8 SACKS OF CEMENT PER CUBIC YARD. CONCRETE USED IN MANHOLE BASES SHALL CONFORM TO THE REQUIREMENTS OF CONCRETE FOR CONCRETE PAVEMENT CONSTRUCTION AS SPECIFIED IN THE CITY STANDARD PAVING SPECIFICATIONS USING CITY CONCRETE PAVEMENT MIX WITHOUT AIR ENTRAINING ADMIXTURE. MORTAR SHALL BE PLACED AROUND THE MANHOLE RING AS SHOWN ON THE DRAWINGS WHEN MANHOLES ARE CONSTRUCTED IN UNPAVED AREAS. MANHOLES CONSTRUCTED WHERE PIPE SIZES ARE SMALLER THAN 24" SHALL HAVE AN INSIDE DIAMETER OF 4". MANHOLES CONSTRUCTED WHERE PIPE SIZES ARE 24" OR LARGER SHALL HAVE AN INSIDE DIAMETER OF 5". COMPLETED MANHOLE SHALL BE WITHOUT LEAKS AND WATER TIGHT.
 11. REINFORCING STEEL SHALL BE INSTALLED IN THE MANHOLE BASES AND SHALL CONSIST OF NO. 4 BARS PLACED ON 6" CENTERS IN BOTH DIRECTIONS. THE MANHOLE BASE REINFORCEMENT SHALL BE PLACED AT LEAST 3" ABOVE THE BOTTOM OF THE MANHOLE BASE. ALL COSTS FOR FURNISHING AND INSTALLING REINFORCING STEEL SHALL BE INCLUDED IN THE UNIT PRICE BID FOR THE MANHOLE.
 12. OPENINGS SHALL BE CUT INTO THE MANHOLE WALL WHEN OUTSIDE DROPS ARE CONSTRUCTED ON EXISTING MANHOLES. SUCH OPENINGS CUT INTO EXISTING MANHOLES SHALL BE AS SMALL AS PRACTICAL TO FACILITATE INSTALLING AND GROUING THE NEW PIPE IN PLACE. WATERSTOP CASSETS SHALL BE USED WITH P V C AND A B S COMPOSITE PIPE. THE NEW PIPE SHALL BE GROUDED INTO THE OPENING USING AN APPROVED NONSHRINK GROUT FOR THE FULL MANHOLE WALL THICKNESS. THE EXTERIOR OF THE COMPLETED CONNECTION SHALL BE SEALED WITH AN APPROVED BITUMINOUS COATING SUCH THAT THE CONNECTION WILL BE WATER TIGHT. FLOOR OF MANHOLE SHALL BE MODIFIED TO FORM NEW FLOW CHANNEL FOR THE NEW CONNECTION AS INDICATED BY THE DRAWING. THIS WORK, INCLUDING MODIFICATION OF MANHOLE FLOOR, SHALL BE PAID FOR AT THE UNIT PRICE BID FOR OUTSIDE DROP STACK CONSTRUCTION ON EXISTING MANHOLE.
 13. THE FLOORS OF ALL MANHOLES SHALL BE SHAPED WITH FLOW CHANNELS SUCH THAT THE MANHOLES WILL BE SELF-CLEANING AND FREE OF AREAS WHERE SOLIDS COULD BE DEPOSITED AS SEWAGE FLOWS THROUGH THE MANHOLE FROM THE INLET PIPES TO THE OUTLET PIPE. FLOW CHANNELS SHALL BE FORMED TO MATCH THE BOTTOM HALVES OF THE INFLOWING PIPES AND THE OUTFLOWING PIPE AS SHOWN BY THE DRAWINGS EXCEPT FOR INSIDE DROP MANHOLES. FLOW CHANNELS FOR INSIDE DROP MANHOLES SHALL BE CONSTRUCTED AS INDICATED BY THE DRAWING. MANHOLE FLOORS SHALL HAVE SLOPES OF 3 INCHES PER FOOT IN THE AREAS OUTSIDE OF THE FLOW CHANNELS SLOPED TOWARD THE FLOW CHANNELS. PIPES LAID THROUGH MANHOLES SHALL HAVE THE TOP HALF REMOVED TO HEAT LIZES FOR THE FULL INSIDE DIAMETER OF THE MANHOLE. MANHOLE FLOORS SHALL BE SHAPED AROUND THE BOTTOM HALF OF THE PIPE WHICH FORMS THE FLOW CHANNEL.
 14. PIPES INSTALLED WITHIN THE EXCAVATION MADE FOR THE MANHOLE SHALL BE CRADLED WITH CONCRETE TO THE LIMITS OF THE MANHOLE EXCAVATION. WHEN CLAY PIPE IS USED, THE CRADLE SHALL EXTEND TO THE FIRST JOINT OUTSIDE THE MANHOLE. THE CRADLE SHALL BE TERMINATED AT THE CLAY PIPE JOINT IN A MANNER WHICH WILL MAINTAIN THE FLEXIBILITY OF THE JOINT. COST OF CRADLE WITHIN MANHOLE EXCAVATION OR TO CLAY PIPE JOINTS ADJACENT TO MANHOLE SHALL BE INCLUDED IN THE UNIT PRICE BID FOR THE MANHOLE.
 15. MANHOLE COVER CASTINGS AND MANHOLE FRAME CASTINGS SHALL CONFORM TO THE REQUIREMENTS AS INDICATED IN THE STANDARD SPECIFICATIONS AND AS SHOWN IN THE STANDARD DETAIL DRAWING.
 16. THE VERTICAL DROP IN INSIDE DROP MANHOLES SHALL NOT EXCEED 4" FOR INFLOWING PIPES SIZED 12" OR SMALLER AND 2" FOR INFLOWING PIPES LARGER THAN 12". THE CROWNS OF INFLOWING PIPES SHALL NEVER BE SET LOWER THAN THE CROWN OF THE OUTFLOWING PIPE.
 17. STANDARD MANHOLES AND STANDARD INSIDE DROP MANHOLES SHALL BE BID AS STANDARD MANHOLES FOR THE TYPE AND DIAMETER INDICATED. OUTSIDE DROP MANHOLES SHALL BE BID AS STANDARD OUTSIDE DROP MANHOLES FOR THE TYPE AND DIAMETER INDICATED. ALL MANHOLE DIAMETERS WILL BE 4" UNLESS INDICATED OTHERWISE.
 18. A BRICK MASONRY COLLAR SHALL BE INSTALLED BETWEEN THE CAST IRON FRAME AND THE CONCENTRIC CORE. THE COLLAR WILL HAVE 6" WALLS AND A VERTICAL HEIGHT OF 6" MINIMUM AND 18" MAXIMUM. A 1" COAT OF MORTAR WILL BE PLASTERED ON THE OUTSIDE OF THE COLLAR.

SCALE:
 1" = 40' HORIZONTAL
 • = IRON

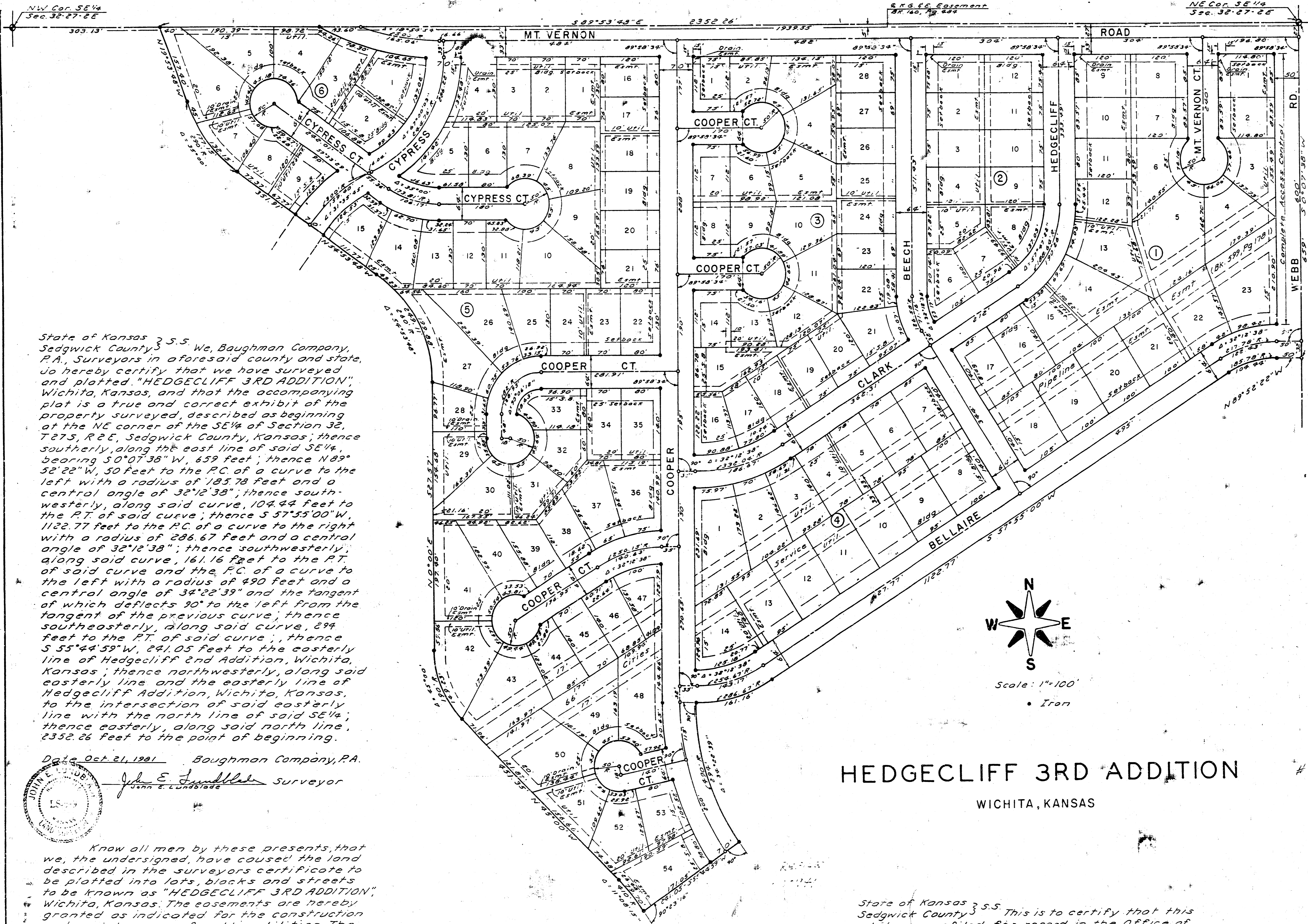


Area to be Graded

No Grading shall be performed in the Pipeline Easement.

HEDGECLIFF 3rd ADDITION			
Easement Grading Plan			
BAUGHMAN COMPANY P. A.			
ENGINEERING & SURVEYING			
316/2nd-7271 • 315 ELLIS • WICHITA, KANSAS 67211			
PROJECT NUMBER			SHEET
168-76-245-82188-008-000-001			4
DESIGN	DRAWN	UTIL. CHECK'D	DATE
B.P.	B.P.		5-11-52
		SCALE	NOTED
			5

R-1 3-29 R-1 3-29 R-1 3-29 R-1 3-29 R-1 3-29



This plat of "HEDGECLIFF 3RD ADDITION", Wichita, Kansas, has been submitted to and approved by the Wichita-Sedgwick County Metropolitan Area Planning Commission, Wichita, Kansas. Dated this 21st day of May, 1981.

Wichita-Sedgwick County Metropolitan Area Planning Commission
[Signature] Vice Chairman
[Signature] Secretary

This plat approved and all dedications shown hereon accepted by the Board of City Commissioners, Wichita, Kansas, this 27th day of Dec., 1981.

[Signature] Mayor
[Signature] City Clerk

This plat approved and all dedications shown hereon accepted by the Board of County Commissioners, Sedgwick County, Kansas, this 24th day of February, 1982.

[Signature] Chairman
[Signature] Commissioner
[Signature] Commissioner
[Signature] County Clerk

Entered on transfer record this 7th day of FEB., 1982.

[Signature] County Clerk

HEDGECLIFF 3RD ADDITION
 WICHITA, KANSAS

State of Kansas } S.S. We, Baughman Company, P.A., Surveyors in aforesaid county and state, do hereby certify that we have surveyed and platted "HEDGECLIFF 3RD ADDITION", Wichita, Kansas, and that the accompanying plat is a true and correct exhibit of the property surveyed, described as beginning at the NE corner of the SE 1/4 of Section 32, T27S, R2E, Sedgwick County, Kansas; thence southerly, along the east line of said SE 1/4, bearing S 0° 07' 38" W, 659 feet; thence N 89° 52' 22" W, 50 feet to the P.C. of a curve to the left with a radius of 185.78 feet and a central angle of 32° 12' 38"; thence southwesterly, along said curve, 161.16 feet to the P.T. of said curve; thence S 57° 55' 00" W, 1122.77 feet to the P.C. of a curve to the right with a radius of 286.67 feet and a central angle of 32° 12' 38"; thence southwestwesterly, along said curve, 161.16 feet to the P.T. of said curve and the P.C. of a curve to the left with a radius of 490 feet and a central angle of 34° 22' 39" and the tangent of which deflects 90° to the left from the tangent of the previous curve; thence southeasterly, along said curve, 899 feet to the P.T. of said curve; thence S 55° 44' 59" W, 241.05 feet to the easterly line of Hedgecliff 2nd Addition, Wichita, Kansas; thence northwesterly, along said easterly line and the easterly line of Hedgecliff Addition, Wichita, Kansas, to the intersection of said easterly line with the north line of said SE 1/4; thence easterly, along said north line, 2352.26 feet to the point of beginning.

Date Oct 21, 1981 Baughman Company, P.A.
[Signature] Surveyor

Know all men by these presents that we, the undersigned, have caused the land described in the surveyors certificate to be platted into lots, blocks and streets to be known as "HEDGECLIFF 3RD ADDITION", Wichita, Kansas. The easements are hereby granted as indicated for the construction and maintenance of public utilities. The streets are hereby dedicated to and for the use of the public. All abutters rights of access to Webb Rd. over and across the east line of Block 1 are hereby granted to the City of Wichita, Kansas.
 The Fidelity Investment Co.
[Signature] President
 Kessler Bros., Inc.
[Signature] President

State of Kansas } S.S. The foregoing instrument was acknowledged before me this 12th day of March, 1981, by The Fidelity Investment Co. by Ivan P. Solyer, President, and Kessler Bros., Inc. by Frank Kessler, President.
[Signature] Notary Public
 My Commission Expires 12-31-82

State of Kansas } S.S. This is to certify that this Sedgwick County } S.S. This is to certify that this plat was refiled for record in the Office of the Register of Deeds this 12th day of October, 1982, at 1:22 o'clock, P.M., to correct the front lot dimensions of Lot 12, Blk 1 from 55.51 feet to 51.97 feet, and Lot 54, Blk 5 from 75 feet to 78.80 feet.
[Signature] Register of Deeds
[Signature] Deputy

State of Kansas } S.S. This is to certify that this plat has been filed for record in the Office of the Register of Deeds this 27th day of FEBRUARY, 1981, at 1:22 o'clock, A.M., and is duly recorded.
[Signature] Register of Deeds
[Signature] Deputy