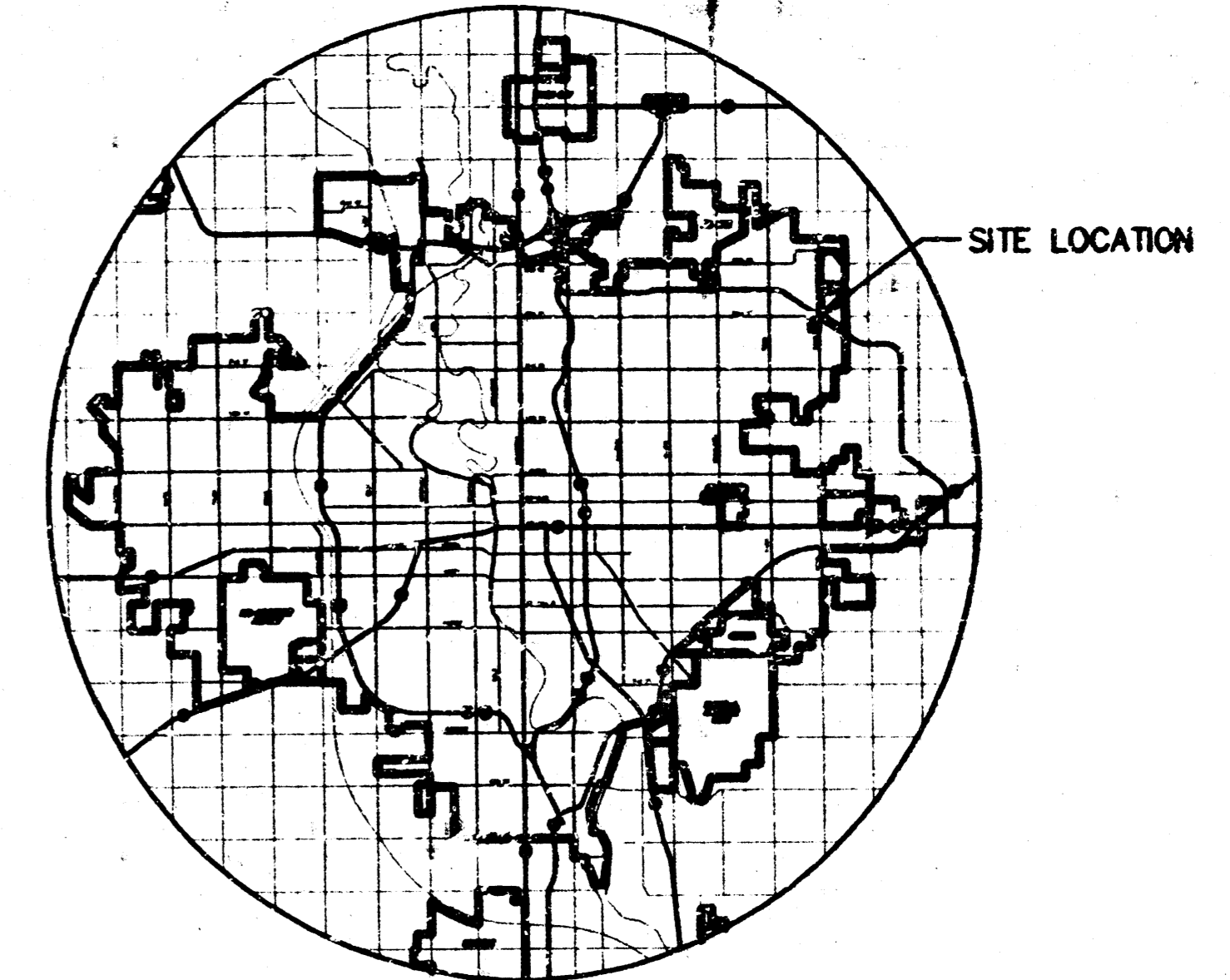


SANITARY SEWER PLANS

FOX POINTE SECOND ADDITION

LATERAL 130 WAR INDUSTRIES SEWER PROJECT NO. 468-82580

CITY OF WICHITA, KANSAS
MICHAEL E. LINDEBAK, CITY ENGINEER
INDEX CODE 742718



LOCATION MAP

GENERAL NOTES

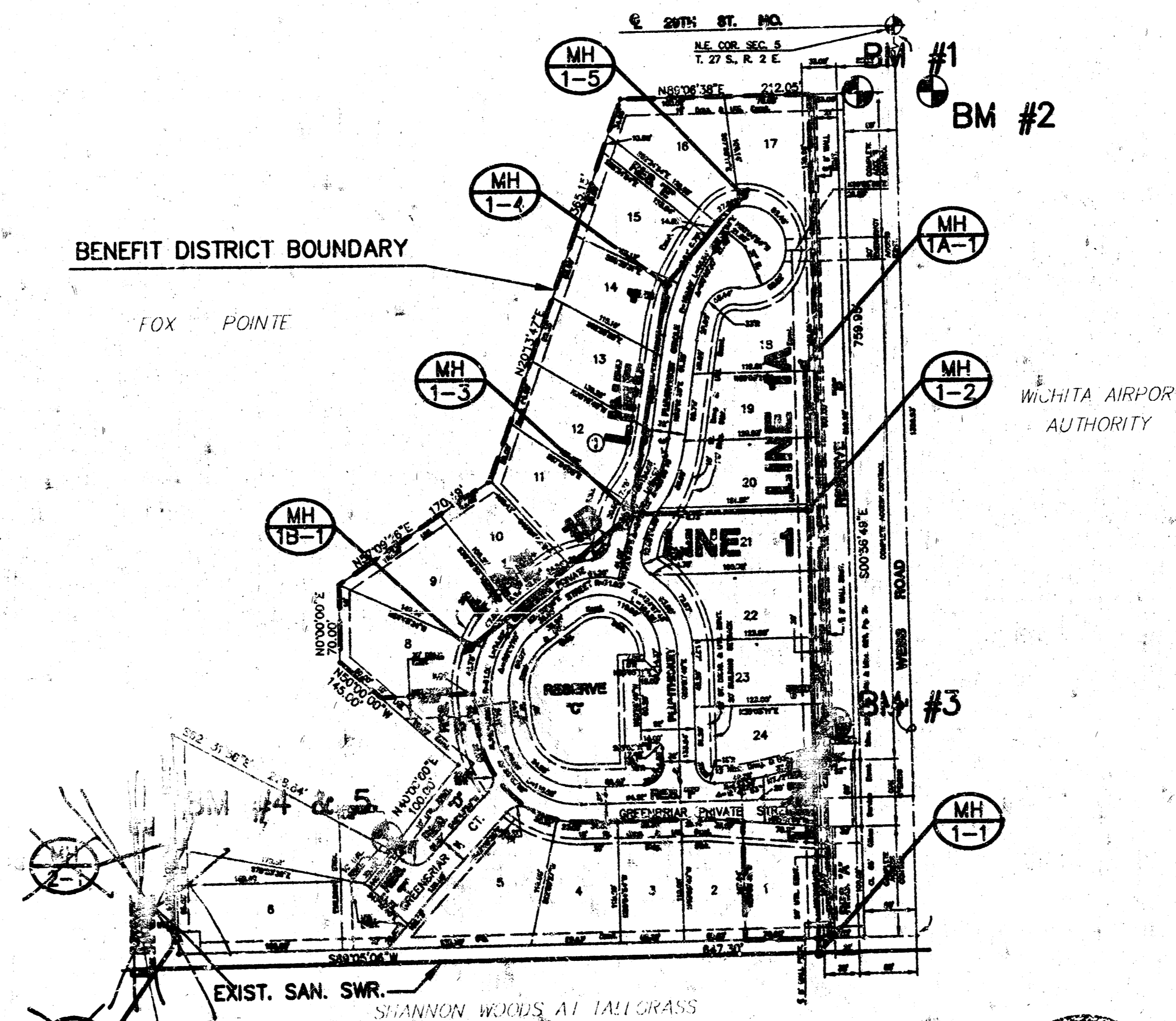
1. THE CONTRACTOR SHALL BE RESPONSIBLE FOR PRESERVING PROPERTY IRONS. THE CONTRACTOR WILL BE REQUIRED TO RE-ESTABLISH ANY PROPERTY IRONS WHICH ARE DAMAGED OR DESTROYED BY HIS CONSTRUCTION OPERATIONS. SUCH IRONS SHALL BE RE-ESTABLISHED BY A LICENSED LAND SURVEYOR IN ACCORDANCE WITH STATE LAWS.
2. EXISTING UTILITIES AND THEIR LOCATIONS, AS SHOWN ON THE PLANS REPRESENT THE BEST INFORMATION OBTAINABLE FOR DESIGN. LOCATION INFORMATION HAS BEEN OBTAINED FROM THE VARIOUS UTILITY COMPANIES AND IS EITHER FROM COMPANY RECORD DRAWINGS OR COMPANY PROVIDED FIELD LOCATIONS. THE PLAIN LOCATIONS SHOWN ARE NOT GUARANTEED. ADDITIONAL EXISTING UTILITIES MAY ALSO BE ENCOUNTERED.
3. CONTRACTOR WILL BE REQUIRED TO PROVIDE A MINIMUM ADVANCE NOTICE OF FORTY-EIGHT (48) HOURS TO UTILITY COMPANIES PRIOR TO STARTING ANY EXCAVATION AS FOLLOWS:

KANSAS ONE-CALL 1-800-344-7233
or 687-2470 (LOCAL WICHITA)

THE CONTRACTOR MUST NOTIFY THE FOLLOWING IN CASE OF AN EMERGENCY:

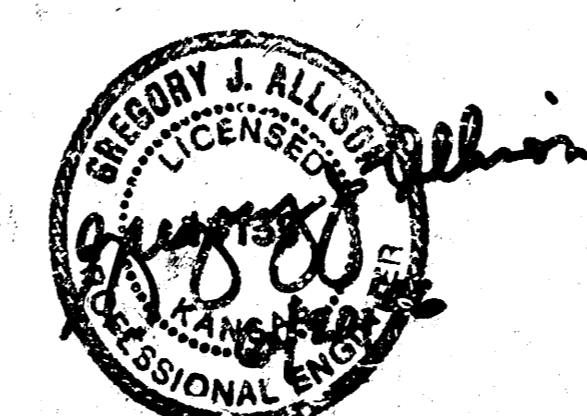
SOUTHWESTERN BELL TELEPHONE COMPANY 1-800-734-7590
CABLEVISION 263-2061
K&E (GAS & ELECTRIC) 383-9600
CITY OF WICHITA WATER & SEWER MAINTENANCE 262-4908
WILLIAMS NATURAL GAS 524-0491
OR 1-800-324-9696 (AFTER 4 p.m.)

4. RUBBLE FROM THE REMOVAL OF MISCELLANEOUS STRUCTURES AND EXCESS EXCAVATION WHICH IS TO BE WASTED SHALL BE DISPOSED OF ON SITES TO BE PROVIDED BY THE CONTRACTOR. THESE SITES SHALL BE APPROVED BY THE ENGINEER AS TO SUITABILITY, APPEARANCE AND SITE LOCATION. LOCATIONS THAT, IN THE OPINION OF THE ENGINEER, WILL LEAVE AN UNSIGHTLY APPEARANCE WILL NOT BE APPROVED. ALL DISPOSAL SITES MUST BE APPROVED BY THE KANSAS DEPARTMENT OF HEALTH AND ENVIRONMENT. MATERIAL EITHER STOCKPILED OR DISPOSED OF IN A FLOOD PLAIN WOULD REQUIRE A KANSAS STATE BOARD OF AGRICULTURE PERMIT. ANY MATERIAL DUMPED IN WATERS OF THE UNITED STATES OR WETLANDS IS SUBJECT TO U.S. CORPS OF ENGINEERS PERMITTING REGULATIONS. ANY MATERIAL BURIED OR STOCKPILED BEYOND APPROVED CONSTRUCTION LIMITS WOULD REQUIRE ADDITIONAL ARCHAEOLOGICAL INVESTIGATIONS UNLESS BURIED IN A PREVIOUSLY APPROVED BORROW LOCATION.
5. COST OF EXCAVATION, HAULING, AND DUMPING OF EXCESS EXCAVATION SHALL BE SUBSIDIARY TO THE PROJECT.
6. A PORTION OF EXCESS EXCAVATED MATERIAL SHALL BE MOUNDING AROUND MANHOLES WHICH EXTEND MORE THAN ONE (1) FOOT ABOVE THE EXISTING GROUND. SUCH MOUNDS SHALL BE CONSTRUCTED WITH A SIX (6) FOOT DIAMETER FLAT TOP WITH 4 TO 1 SIDE SLOPES DOWN TO THE ORIGINAL GROUND. THE ELEVATION OF THE FLAT TOP OF THE MOUND SHALL BE 0.4 FOOT BELOW THE TOP OF THE MANHOLE.
7. ALL STUBS AND PLUGGED PIPES SHALL BE LOCATED WITH GREEN PLASTIC TAPE IN THE SAME MANNER AS RISERS.
8. PRIOR TO LAYING SEWER LINES USING EXISTING STUBS IN EXISTING MANHOLES, THE CONTRACTOR SHALL EXPOSE AND VERIFY THE ELEVATION, GRADE AND ALIGNMENT OF EXISTING STUBS AND NOTIFY THE ENGINEER OF ANY DEVIATION FROM THE PLAN. WHERE CONNECTION TO AN EXISTING MANHOLE THAT DOES NOT HAVE AN EXISTING STUB OR THE STUB IS UNSERVICEABLE DUE TO ELEVATION GRADE OR ALIGNMENT, THE CONTRACTOR SHALL RESHAPE THE EXISTING MANHOLE INVERT TO PROVIDE SMOOTH FLOW. THE COST OF RESHAPING EXISTING MANHOLE INVERTS IS INCIDENTAL TO THE PROJECT.
9. TREES AND SHRUBS IN PUBLIC RIGHT-OF-WAY WHICH ARE IN DIRECT CONFLICT WITH PROPOSED NEW CONSTRUCTION SHALL BE REMOVED BY THE CONTRACTOR WITH THE ENGINEER'S APPROVAL. TREES AND SHRUBS WHICH ARE NOT IN DIRECT CONFLICT WITH PROPOSED NEW CONSTRUCTION SHALL BE SAVED AND PROTECTED FROM DAMAGE.
10. ALL DISTURBED AREAS TO BE SEEDDED WITH RYE GRASS AT A RATE OF 200 LBS./ACRE WITHIN 10 DAYS OF CONSTRUCTION. CONTRACTOR TO PREPARE GROUND PER CITY SPEC.



SCALE: 1" = 100'
LEGEND

*Booked
As BUILT
11/4/96
RDL
N-233*



INDEX TO DRAWINGS

SHEET NO.	DESCRIPTION
1	TITLE SHEET
2	MANHOLE DETAILS
3	LINE 1, LINE 1A
4	LINE 1B, LINE 2
5	FINAL PLAN

BENCHMARKS

- BM #1 "□" CUT AT S.E. COR. RCBC UNDER WEBB RD NEAR N.E. COR. FOX POINTE. ELEV. = 219.65
- BM #2 "□" CUT AT S.W. COR. RCBC UNDER WEBB RD. NEAR N.E. COR. FOX POINTE. ELEV. = 218.92
- BM #3 R.R. SPIKE IN P.P. 54' N. OF MAIN ENTRANCE TO FOX POINTE. ELEV. = 223.55
- BM #4 BURIED "T" POST 10' N. OF N.E. COR. OF LOT 7, FOX POINTE. ELEV. = 214.79
- BM #5 BURIED "T" POST 10' N. OF N.E. COR. OF LOT 7, FOX POINTE. ELEV. = 219.65

REVISED 6/20/96

FOX POINTE SECOND ADDITION
PROJECT NAME

SANITARY SEWER PLANS
SHEET TITLE

MID-KANSAS ENGINEERING CONSULTANTS, INC.
411 N. WEBB ROAD
WICHITA, KS. 67206
316-684-9600

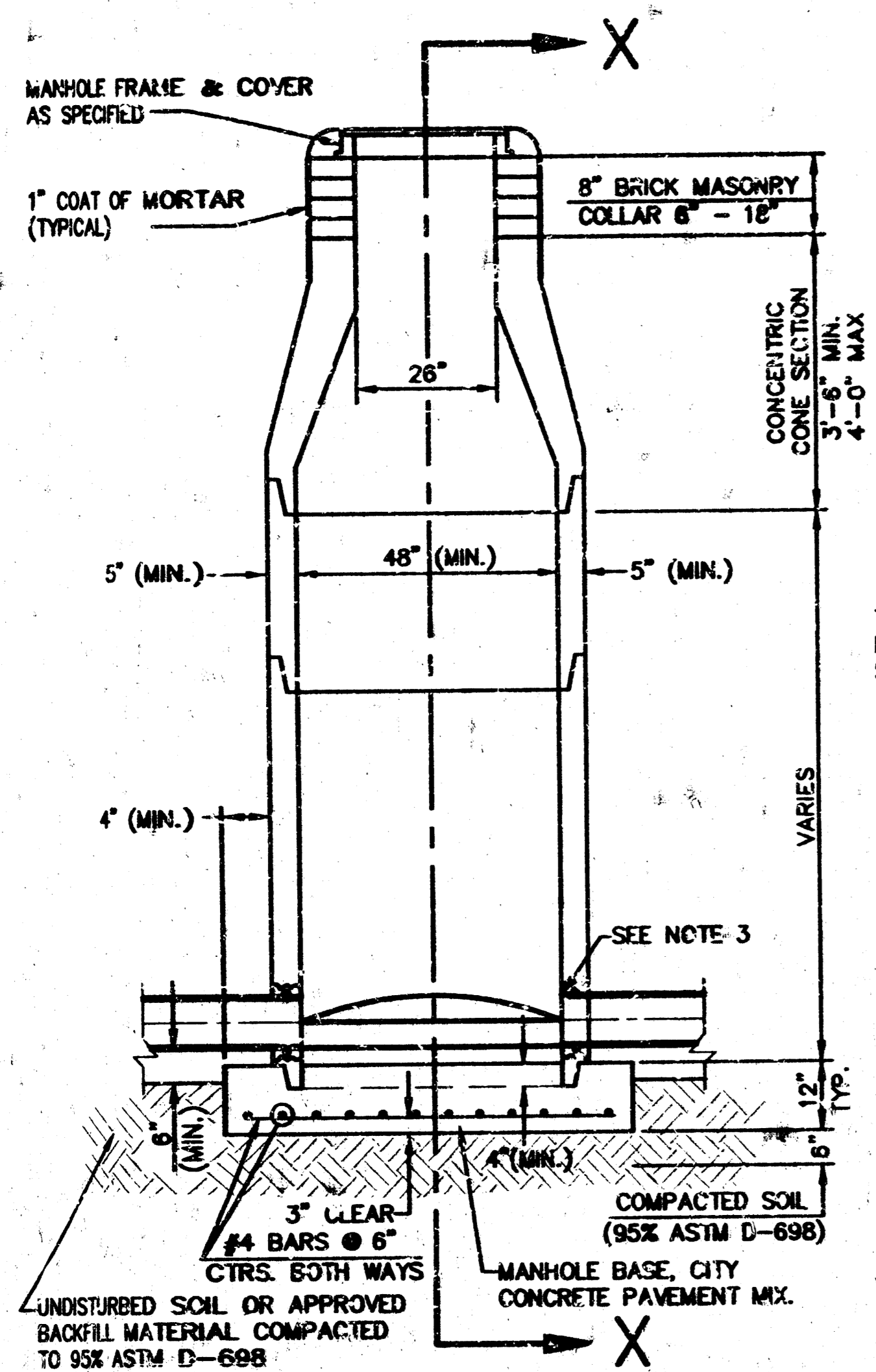
GJA DESIGN BY:	KKL DRAWN BY:	GJA CHECKED BY:
MAY 1996 DATE	25113_BT JOB NO.	1 / 6 SHEET/OF

F:\ACTIV\FOXPOINT\FOX-2ND\SAN\95113_BT.TWO JUN 20 11:07:32 1996

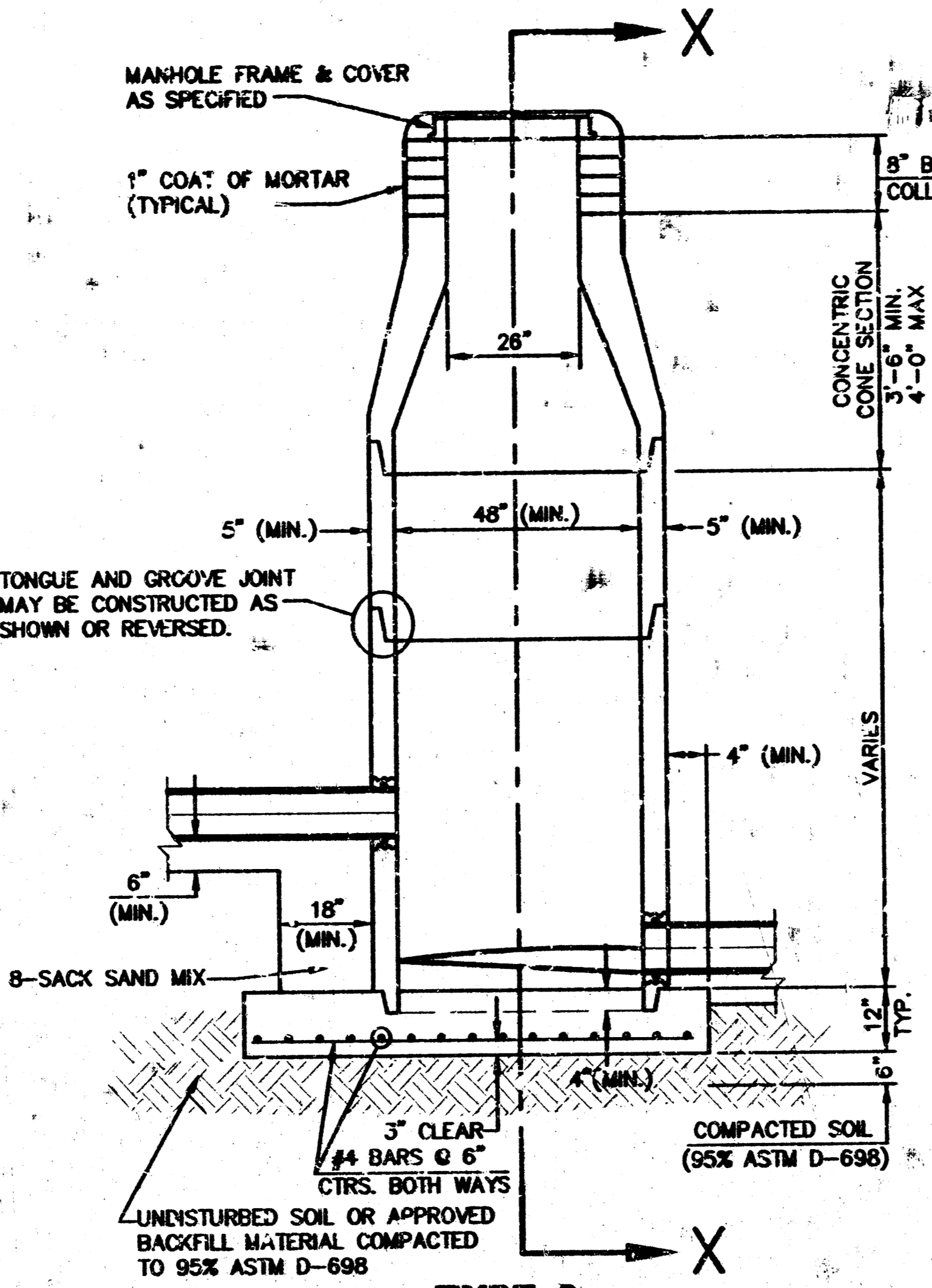
F:\ACTIV\FOXPOINT\FOX-2ND\SAN\95113_BT.DWG

SEWER APPURTENANCES DETAILS

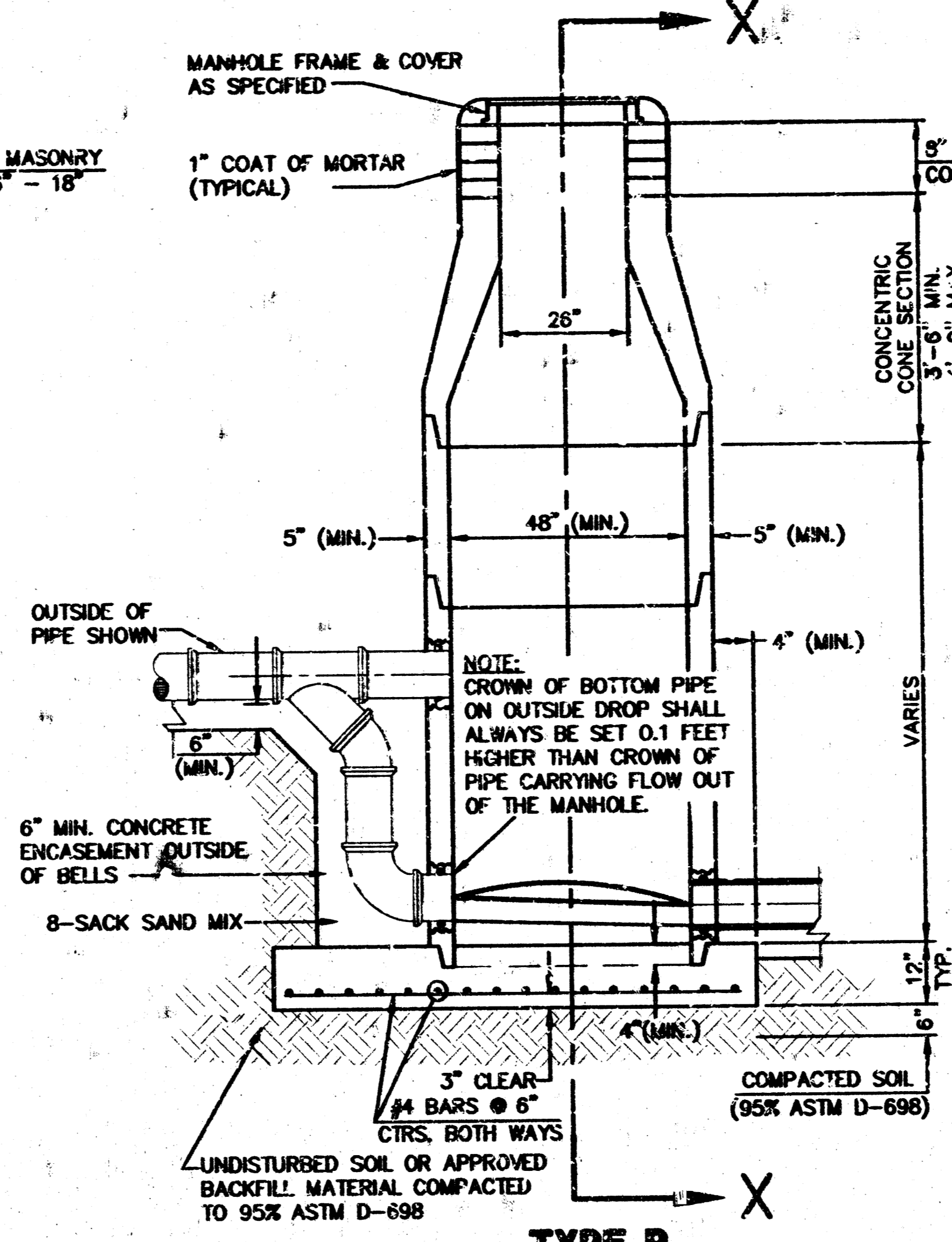
ADOPTED AS STANDARD DESIGN
BY
CITY OF WICHITA



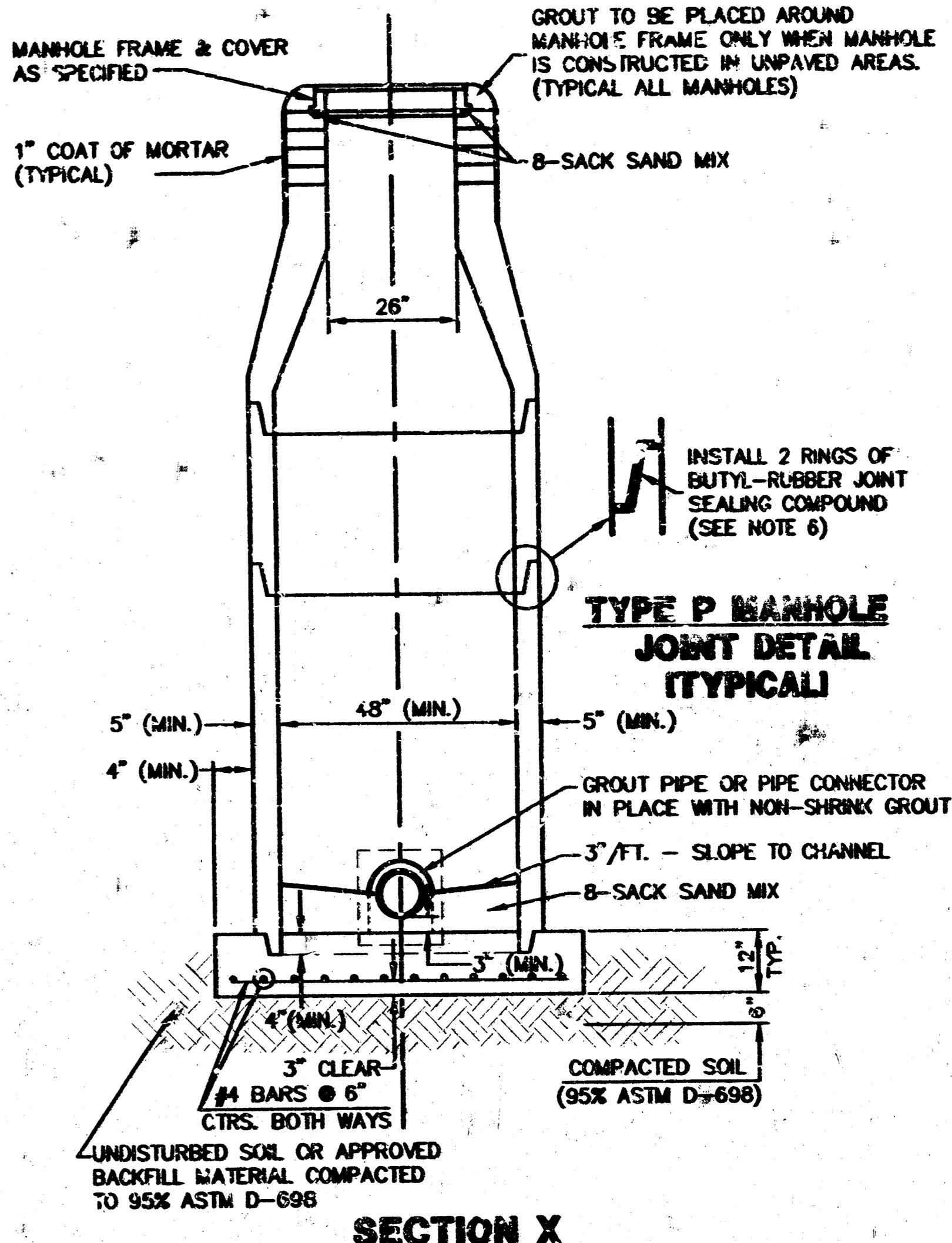
**TYPE P
STANDARD MANHOLE**



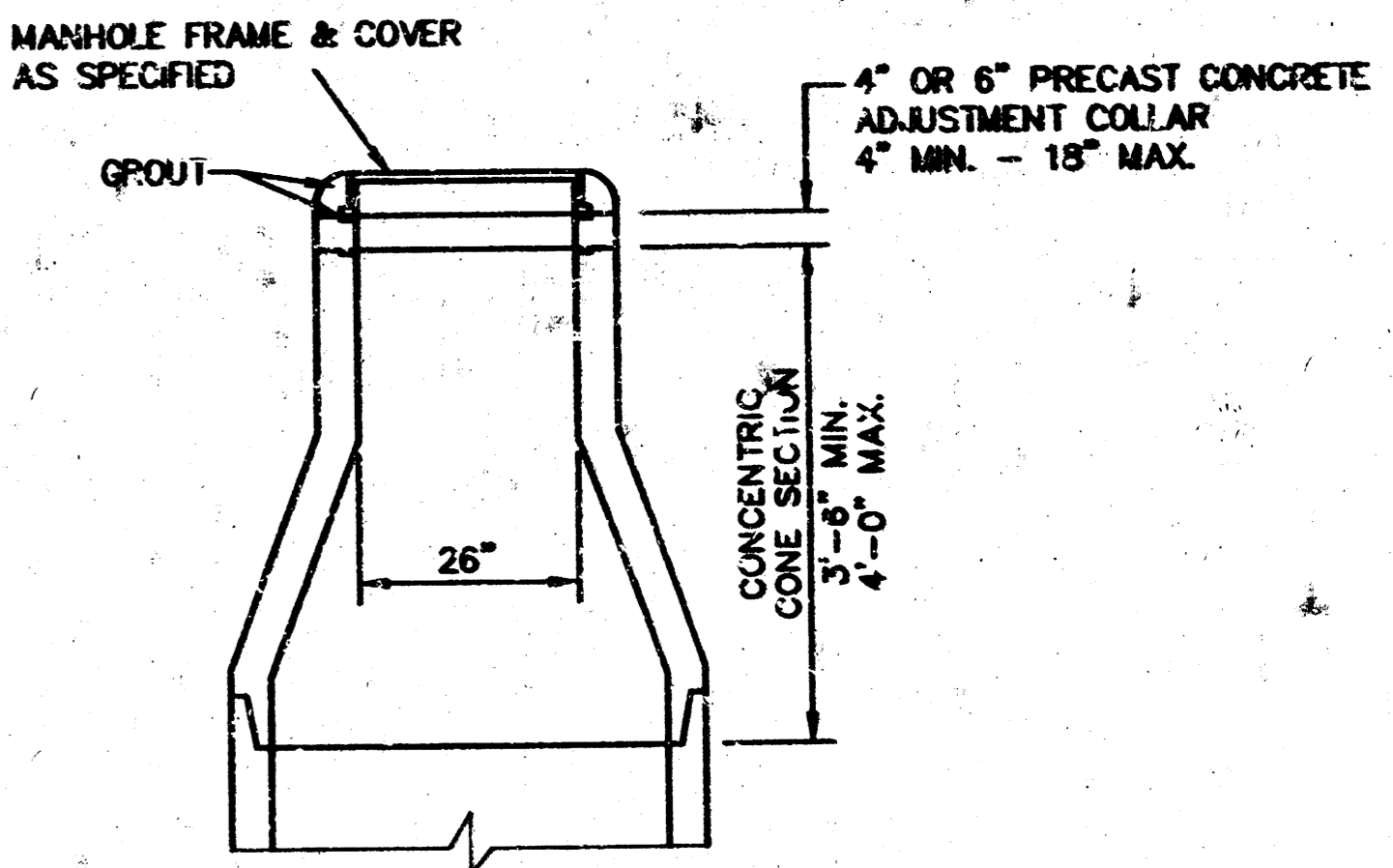
**TYPE P
INSIDE DROP MANHOLE**



**TYPE P
OUTSIDE DROP MANHOLE**



**SECTION X
(TYPICAL)**



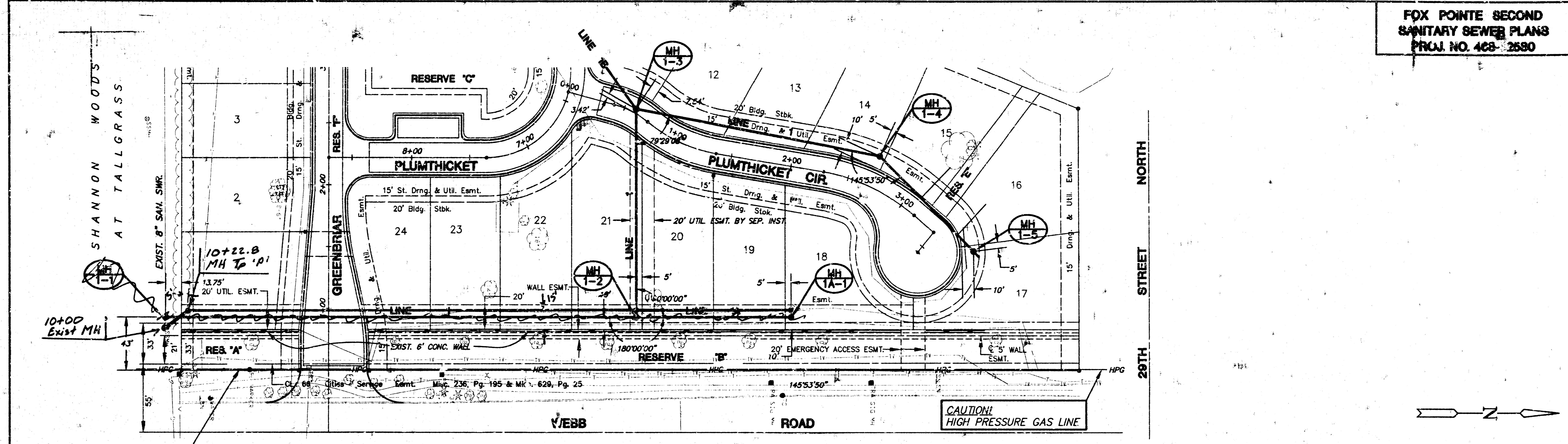
**ALTERNATE CONSTRUCTION
IN UNPAVED AREAS**

GENERAL NOTES - PRECAST MANHOLE NOTES

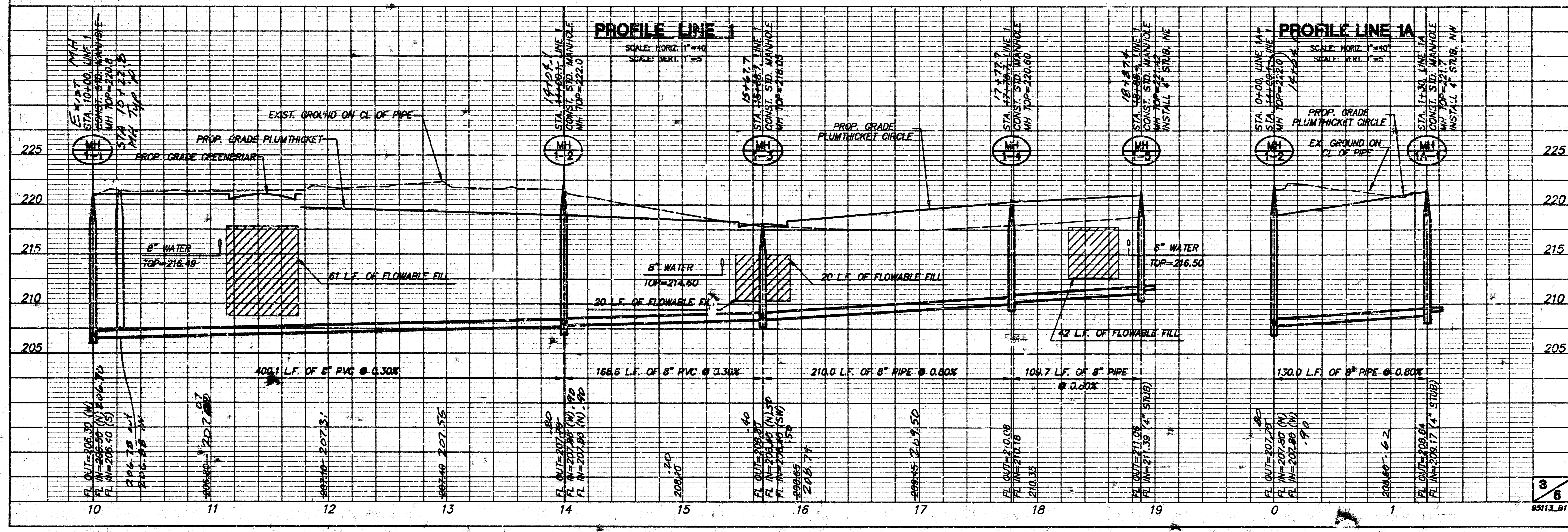
- ALL PRECAST CONCRETE MANHOLE SECTIONS SHALL CONFORM TO THE LATEST REVISIONS OF A.S.T.M. C478 AS MODIFIED BY THE SPECIFICATIONS.
- NON-SHRINK GROUT SHALL BE NON-METALLIC TYPE.
- APPROVED FLEXIBLE WATERSTOP GASKETS SHALL BE INSTALLED TO JOIN THE SEWER TO THE MANHOLE WALL WHEN A.B.S. COMPOSITE PIPE OR P.V.C. PIPE IS USED. FOR OTHER TYPES OF PIPE THE SEWER SHALL BE GROUTED IN PLACE WITH NON-SHRINK GROUT. THE SEWER PIPE SHALL BE SUPPORTED WITH CONCRETE ENCASUREMENT A MINIMUM OF 3 FEET FROM THE MANHOLE WALL AND TO THE FIRST JOINT FOR V.C.P. SUCH THAT THE JOINT REMAINS FLEXIBLE.
- ALL INSIDE SURFACES OF THE CONCRETE MANHOLE WHICH WOULD BE EXPOSED TO SEWER GAS SHALL BE COATED WITH 2 COATS TNEPEC SERIES 66 HI-BUILD EPOXYLINE, DRY THICKNESS OF 8 MILS (MIN.).
- EXTERIOR MANHOLE WALLS SHALL BE COATED WITH 1 COAT MOBILARMA 633 BITUMINUS COATING.
- JOINT SEALING COMPOUND SHALL BE KENT SEAL NO. 2 OR APPROVED EQUAL.
- PRECAST MANHOLES SHALL BE SET AT LEAST 4 INCHES INTO THE MANHOLE BASE.
- TOP OF MANHOLE FLOOR SLAB SHALL BE AT LEAST 3 INCHES BELOW THE FLOW LINE OF THE OUTLET PIPE TO INSURE SUFFICIENT MINIMUM THICKNESS OF SHAPED INVERT.
- LIFTING HOLES SHALL BE FILLED WITH NON-SHRINK GROUT AND THE INTERIOR SURFACE COATED AS SPECIFIED.
- MORTAR USED IN MASONRY CONSTRUCTION SHALL CONTAIN 8 SACKS OF CEMENT PER CUBIC YARD. CONCRETE USED IN MANHOLE BASES SHALL CONFORM TO THE REQUIREMENTS OF CONCRETE FOR CONCRETE PAVEMENT CONSTRUCTION AS SPECIFIED IN THE CITY STANDARD PAVING SPECIFICATIONS USING CITY CONCRETE PAVEMENT MIX WITHOUT AIR ENTRAINING ADMIXTURE. MORTAR SHALL BE PLACED AROUND THE MANHOLE RING AS SHOWN ON THE DRAWINGS WHEN MANHOLES ARE CONSTRUCTED IN UNPAVED AREAS. MANHOLES CONSTRUCTED WHERE PIPE SIZES ARE SMALLER THAN 24" SHALL HAVE AN INSIDE DIAMETER OF 4". MANHOLES CONSTRUCTED WHERE PIPE SIZES ARE 24" OR LARGER SHALL HAVE AN INSIDE DIAMETER OF 5". COMPLETED MANHOLE SHALL BE WITHOUT LEAKS AND WATER TIGHT.
- REINFORCING STEEL SHALL BE INSTALLED IN THE MANHOLE BASES AND SHALL CONSIST OF NO. 4 BARS PLACED ON 6" CENTERS IN BOTH DIRECTIONS. THE MANHOLE BASE REINFORCEMENT SHALL BE PLACED AT LEAST 3" ABOVE THE BOTTOM OF THE MANHOLE BASE. ALL COSTS FOR FURNISHING AND INSTALLING REINFORCING STEEL SHALL BE INCLUDED IN THE UNIT PRICE BID FOR THE MANHOLE.
- OPENINGS SHALL BE CUT INTO THE MANHOLE WALL WHEN OUTSIDE DROPS ARE CONSTRUCTED ON EXISTING MANHOLES. SUCH OPENINGS CUT INTO EXISTING MANHOLES SHALL BE AS SMALL AS PRACTICAL TO FACILITATE INSTALLING AND GROUTING THE NEW PIPE IN PLACE. WATERSTOP GASKETS SHALL BE USED WITH P.V.C. AND A.B.S. COMPOSITE PIPE. THE NEW PIPE SHALL BE GROUTED INTO THE OPENING USING AN APPROVED NONSHRINK GROUT FOR THE FULL MANHOLE WALL THICKNESS. THE EXTERIOR OF THE COMPLETED CONNECTION SHALL BE SEALED WITH AN APPROVED BITUMINOUS COATING SUCH THAT THE CONNECTION WILL BE WATER TIGHT. FLOOR OF MANHOLE SHALL BE MODIFIED TO FORM NEW FLOW CHANNEL FOR THE NEW CONNECTION AS INDICATED BY THE DRAWING. THIS WORK, INCLUDING MODIFICATION OF MANHOLE FLOOR, SHALL BE PAID FOR AT THE UNIT PRICE BID FOR OUTSIDE DROP STACK CONSTRUCTED ON EXISTING MANHOLE.
- THE FLOORS OF ALL MANHOLES SHALL BE SHAPED WITH FLOW CHANNELS SUCH THAT THE MANHOLES WILL BE SELF-CLEANING AND FREE OF AREAS WHERE SOLIDS COULD BE DEPOSITED AS SEWAGE FLOWS THROUGH THE MANHOLE FROM ALL INLET PIPES TO THE OUTLET PIPE. FLOW CHANNELS SHALL BE FORMED TO MATCH THE BOTTOM HALVES OF THE INFLOWING PIPES AND THE OUTFLOWING PIPE AS SHOWN BY THE DRAWINGS EXCEPT FOR INSIDE DROP MANHOLES. FLOW CHANNELS FOR INSIDE DROP MANHOLES SHALL BE CONSTRUCTED AS INDICATED BY THE DRAWING. MANHOLE FLOORS SHALL HAVE SLOPES OF 3 INCHES PER FOOT IN THE AREAS OUTSIDE OF THE FLOW CHANNELS SLOPED TOWARD THE FLOW CHANNELS. PIPES LAID THROUGH MANHOLES SHALL HAVE THE TOP HALF REMOVED TO NEAT LINES FOR THE FULL INSIDE DIAMETER OF THE MANHOLE. MANHOLE FLOORS SHALL THEN BE SHAPED AROUND THE BOTTOM HALF OF THE PIPE WHICH FORMS THE FLOW CHANNEL.
- PIPES INSTALLED WITHIN THE EXCAVATION MADE FOR THE MANHOLE SHALL BE CRADLED WITH CONCRETE TO THE LIMITS OF THE MANHOLE EXCAVATION. WHEN CLAY PIPE IS USED, THE CRADLE SHALL EXTEND TO THE FIRST JOINT OUTSIDE THE MANHOLE. THE CRADLE SHALL BE TERMINATED AT THE CLAY PIPE JOINT IN A MANNER WHICH WILL MAINTAIN THE FLEXIBILITY OF THE JOINT. COST OF CRADLE WITHIN MANHOLE EXCAVATION OR TO CLAY PIPE JOINTS ADJACENT TO MANHOLE SHALL BE INCLUDED IN THE UNIT PRICE BID FOR THE MANHOLE.
- MANHOLE COVER CASTINGS AND MANHOLE FRAME CASTINGS SHALL CONFORM TO THE REQUIREMENTS AS INDICATED IN THE STANDARD SPECIFICATIONS AND AS SHOWN IN THE STANDARD DETAIL DRAWING.
- THE VERTICAL DROP IN INSIDE DROP MANHOLES SHALL NOT EXCEED 2' FOR INFLOWING PIPES. THE CROWNS OF INFLOWING PIPES SHALL NEVER BE SET LOWER THAN THE CROWN OF THE OUTFLOWING PIPE.
- STANDARD MANHOLES AND STANDARD INSIDE DROP MANHOLES SHALL BE BID AS STANDARD MANHOLES FOR THE TYPE AND DIAMETER INDICATED. OUTSIDE DROP MANHOLES SHALL BE BID AS STANDARD OUTSIDE DROP MANHOLES FOR THE TYPE AND DIAMETER INDICATED. ALL MANHOLE DIAMETERS WILL BE 4' UNLESS INDICATED OTHERWISE.
- A BRICK MASONRY COLLAR SHALL BE INSTALLED BETWEEN THE CAST IRON FRAME AND THE CONCENTRIC CONE. THE COLLAR WILL HAVE 8" WALLS AND A VERTICAL HEIGHT OF 8" MINIMUM AND 18" MAXIMUM. A 1" COAT OF MORTAR WILL BE PLASTERED ON THE OUTSIDE OF THE COLLAR.

REVISED: 6-12-86

MANHOLE DETAILS			
CITY OF WICHITA, KANSAS			
Design	C.O.W.	Checked by	Checked by
Drawn by	Date	Date	Job No. 95113_BD



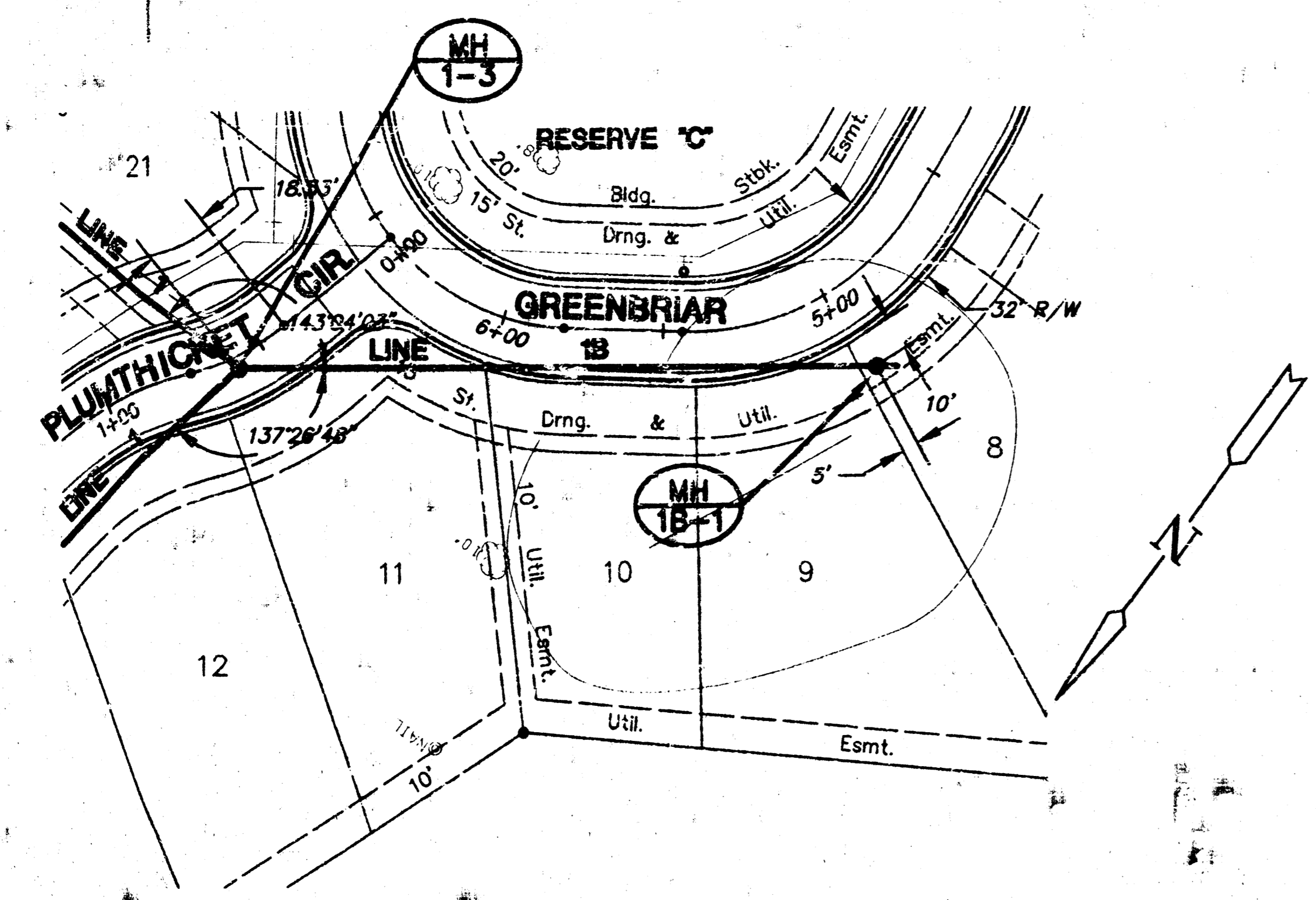
PLAN LINE 1 & 1A
SCALE: 1"=40'



PROFILE LINE 1
SCALE: HORIZ. 1"=40'
SCALE: VERT. 1"=5'

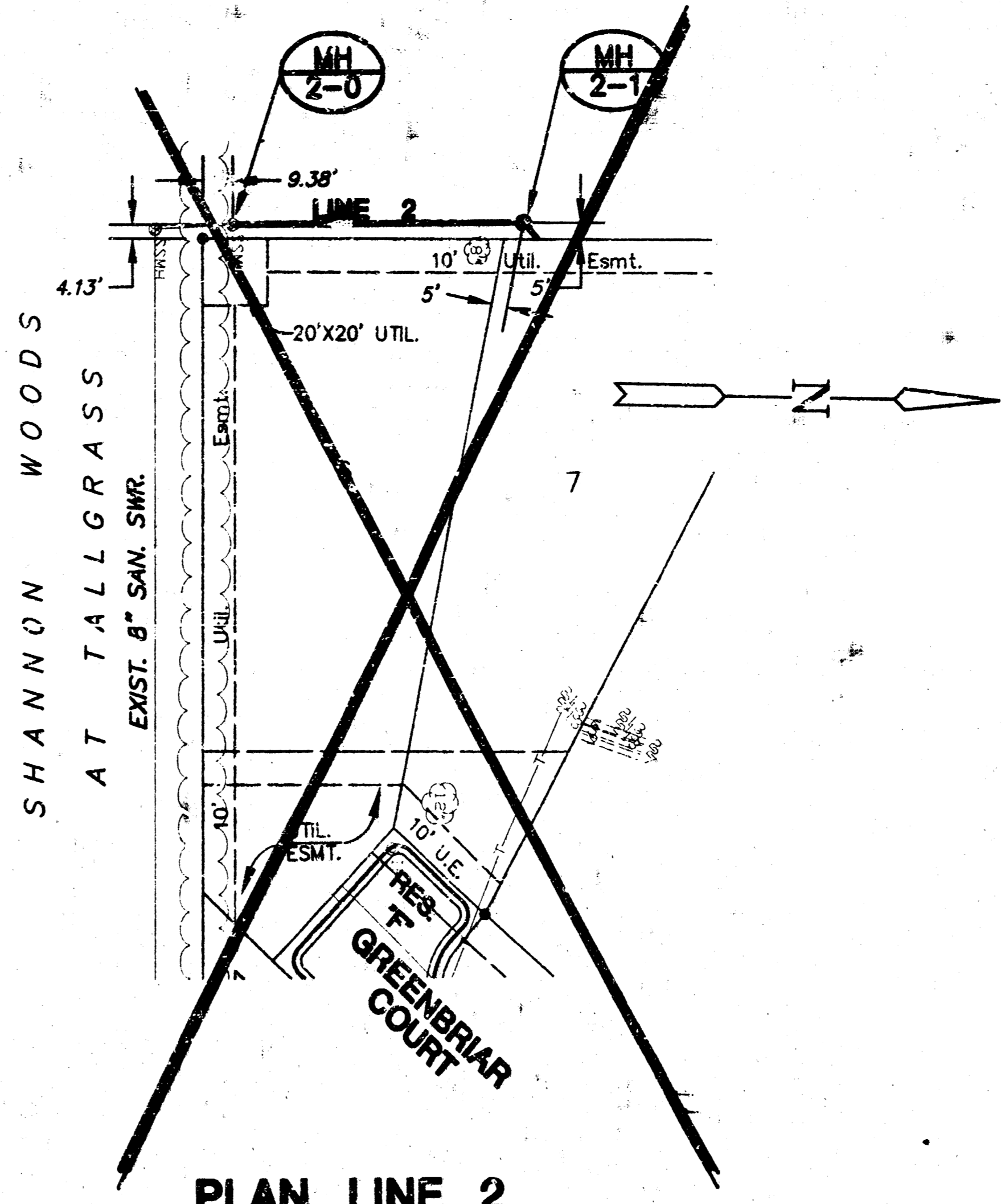
PROFILE LINE 1A
SCALE: HORIZ. 1"=40'
SCALE: VERT. 1"=5'

F:\ACTUAL\FOXPOINTE\FOX-2ND\SAN\5113_B1.Dwg, 08/19/1996



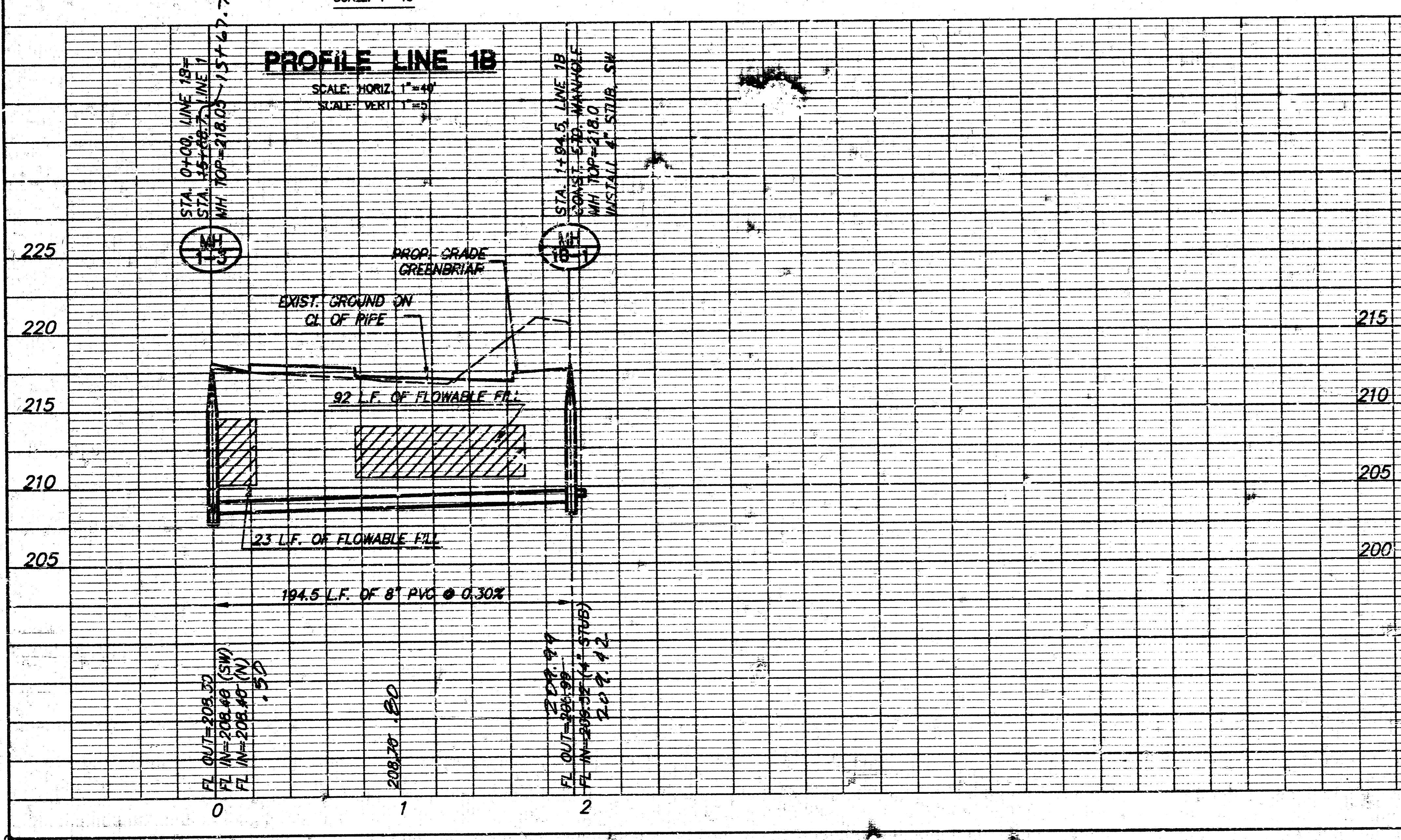
PLAN LINE 1B

SCALE: 1"=40'



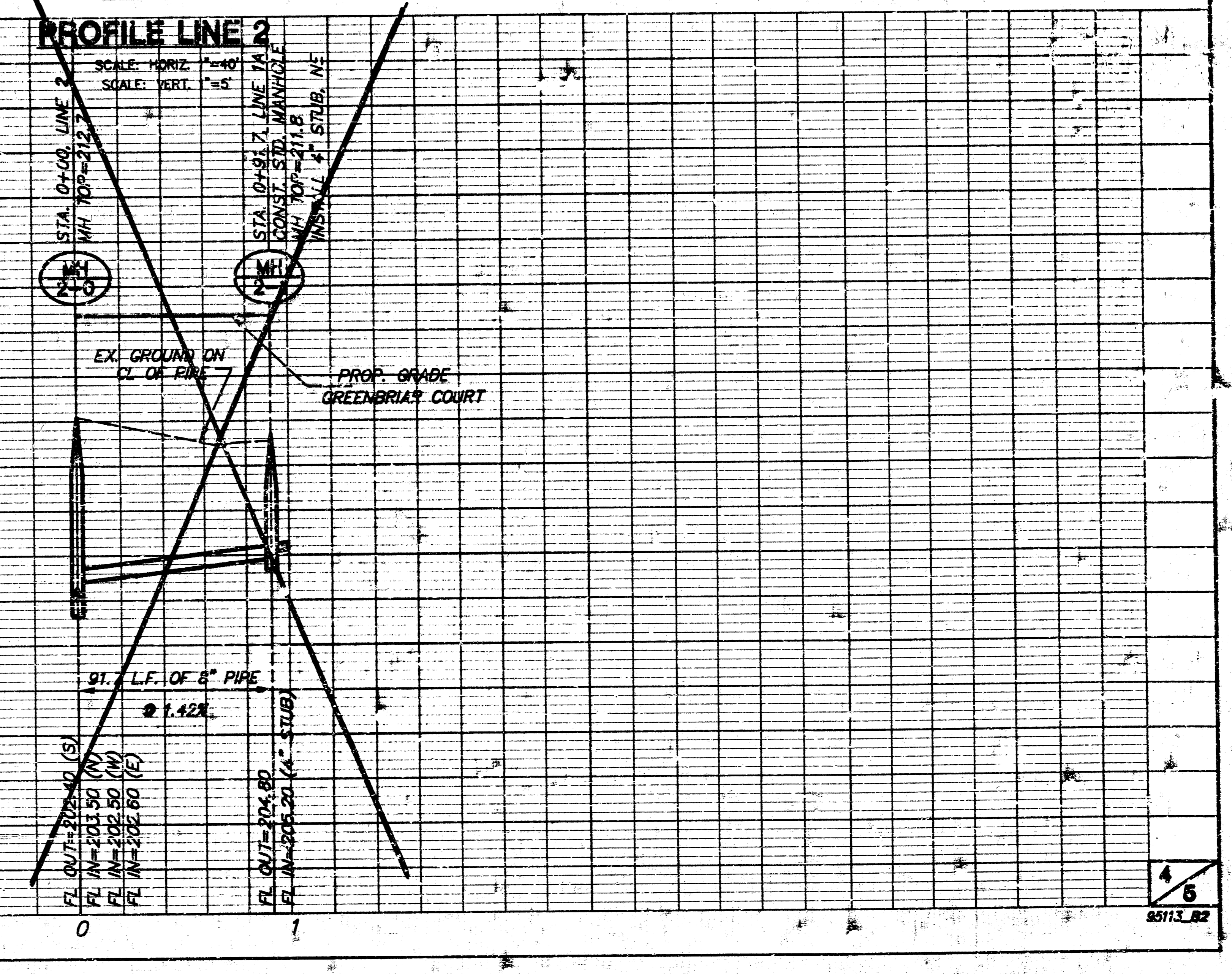
PLAN LINE 2

SCALE: 1"=40'



PROFILE LINE 1B

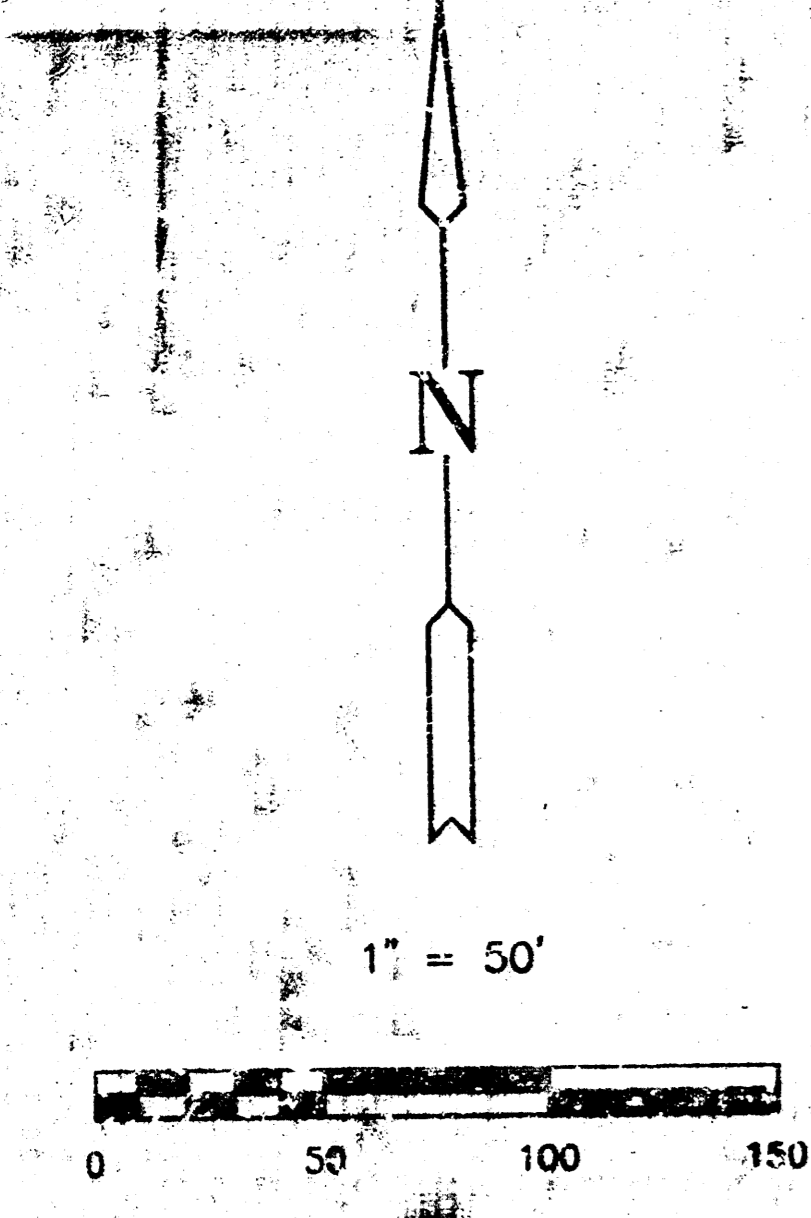
SCALE: HORIZ. 1"=40'
SCALE: VERT. 1"=5'



PROFILE LINE 2

SCALE: HORIZ. 1"=40'
SCALE: VERT. 1"=5'

FINAL PLAT FOX POINTE SECOND ADDITION AN ADDITION TO WICHITA, SEDGWICK COUNTY, KANSAS



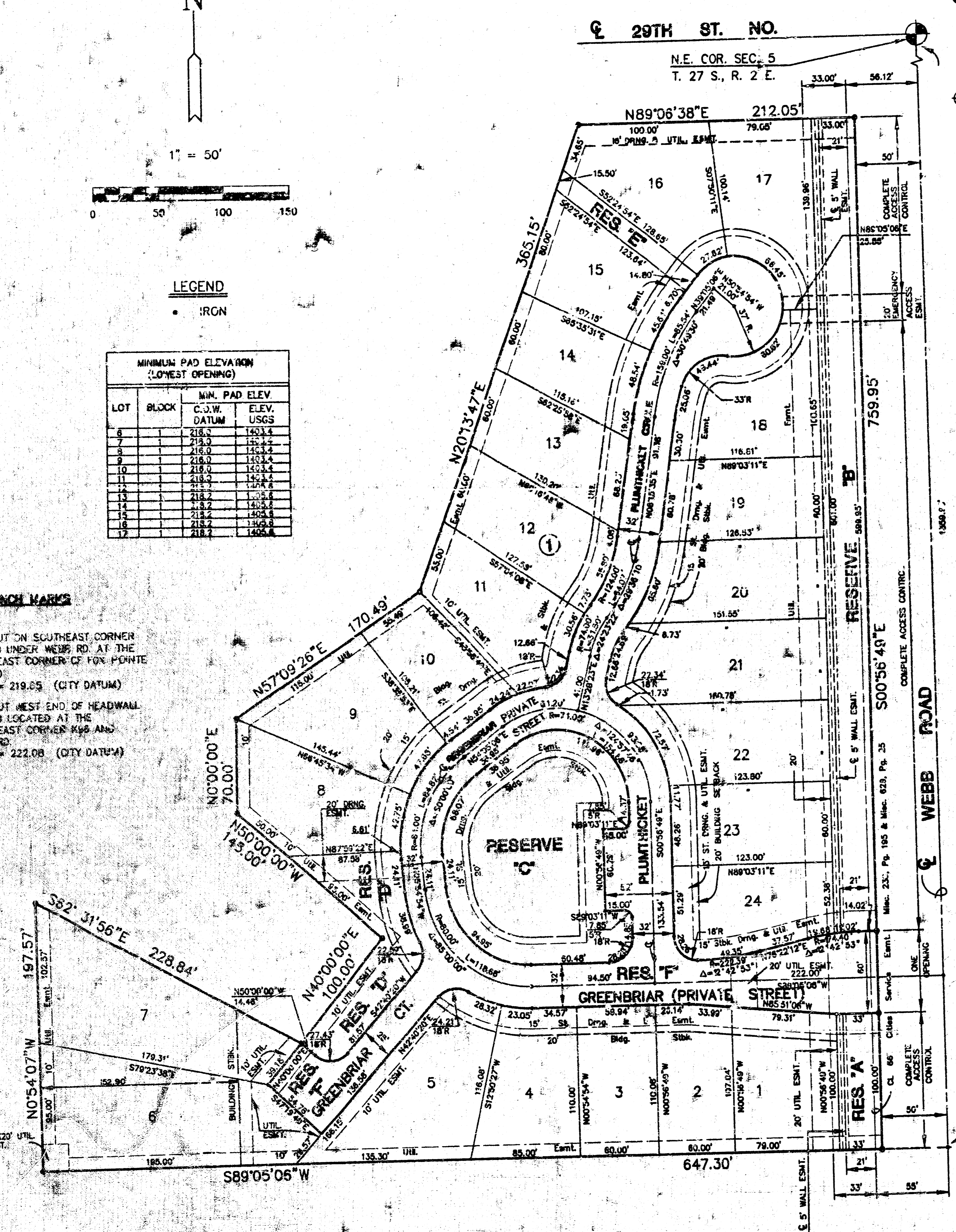
LEGEND

MINIMUM PAD ELEVATION (LOWEST OPENING)

LOT	BLOCK	C.O.W. DATUM	ELEV. USGS	MIN. PAD ELEV.
1		218.2	1453.4	
2		218.2	1453.4	
3		218.2	1453.4	
4		218.2	1453.4	
5		218.2	1453.4	
6		218.2	1453.4	
7		218.2	1453.4	
8		218.2	1453.4	
9		218.2	1453.4	
10		218.2	1453.4	
11		218.2	1453.4	
12		218.2	1453.4	
13		218.2	1453.4	
14		218.2	1453.4	
15		218.2	1453.4	
16		218.2	1453.4	
17		218.2	1453.4	
18		218.2	1453.4	
19		218.2	1453.4	
20		218.2	1453.4	
21		218.2	1453.4	
22		218.2	1453.4	
23		218.2	1453.4	
24		218.2	1453.4	

BENCH MARKS

- BM #1 "C" CUT IN SOUTHEAST CORNER OF R29 UNDER WEBB RD. AT THE NORTHEAST CORNER OF FOX POINTE SECOND. ELEV. = 219.05 (CITY DATUM)
- BM #2 "D" CUT WEST END OF HEADWALL OF R29 LOCATED AT THE NORTHEAST CORNER R46 AND WEBB RD. ELEV. = 222.08 (CITY DATUM)



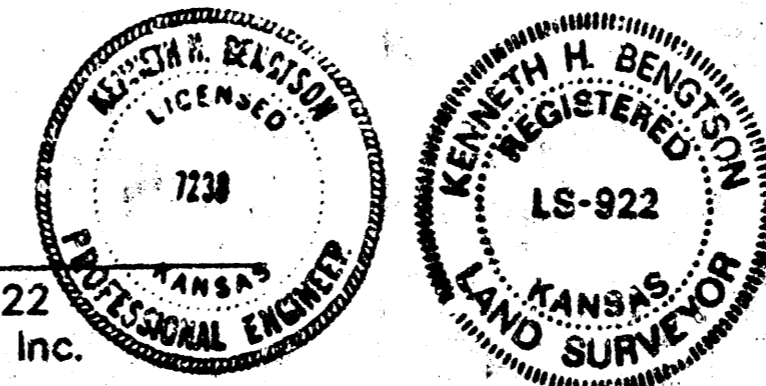
I, Kenneth H. Bengtson, a Civil Engineer and Registered Land Surveyor in Kansas, do hereby certify that I have been in responsible charge of surveying and platting of "FOX POINTE SECOND ADDITION", an addition to Wichita, Sedgwick County, Kansas, into lots, a block, and reserves the same being accurately set forth in the accompanying plat and described herein:

A replat of Lot 24, Block 1, FOX POINTE, an addition to Wichita, Sedgwick County, Kansas.

All lots, blocks, easements, building setbacks including the Drainage Easement on Film 1131, Page 292 within the above described property are hereby vacated and replated by virtue of K.S.A. 12-512(b).

I hereby certify that the details of this plat are correct to the best of my knowledge and belief this 21 day of February, 1996.

Kenneth H. Bengtson
Kenneth H. Bengtson, P.E., R.L.S. #922
Mid-Kansas Engineering Consultants, Inc.
411 North Webb Road
Wichita, KS 67206



Know all men by these presents that we the undersigned property owners of the lands as above set forth in the Civil Engineer's and Registered Land Surveyor's Certificate, have caused the same surveyed and platted into lots, a block, and reserves the same to be known as "FOX POINTE SECOND ADDITION" an addition to Wichita, Sedgwick County, Kansas. Easements for the construction and maintenance of public utilities and drainage as indicated on the accompanying plat are hereby granted. The 5.00' wall easement is granted for the construction and maintenance of a privacy wall, public utilities are allowed to cross the wall easement. Reserves A, B, C, D, E, and F shall be platted for landscaping irrigation, lighting, and sidewalks. Reserve F is also platted for entry monuments and entry gate, streets, and parking. The Reserves shall be owned and maintained by the homeowner's association. All abutting right of access to or from Webb Road over and across the East Lines Reserve A and B of FOX POINTE SECOND ADDITION, are hereby granted to the City of Wichita. Minimum pad elevations are as indicated on the face of the plat. The 20' Emergency Access Easement is granted for emergency vehicles.

LEEWOOD HOMES, INC.

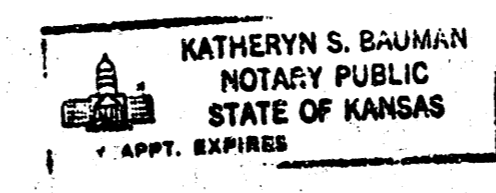
Joe H. Lee, Pres.
Joe H. Lee, President

STATE OF KANSAS)
ss.
SEDGWICK COUNTY)

BE IT REMEMBERED, that on this 21 day of February, 1996, before me the undersigned, a Notary Public in and for the County and State aforesaid, came Joe H. Lee, President of Leewood Homes, Inc. to me personally known to be the same person who executed the foregoing instrument of writing and duly acknowledged the execution of the same.

IN WITNESS WHEREOF, I have hereunto set my hand and affixed my official seal, the day and year last above written.

Katheryn S. Bauman
Katheryn S. Bauman
Notary Public
My appointment expires: 1-24-99



This plat of "FOX POINTE SECOND ADDITION", has been submitted to and approved by the Wichita-Sedgwick County Metropolitan Area Planning Commission, Wichita, Kansas.

Dated this 25th day of JANUARY, 1996.

WICHITA-SEDGWICK COUNTY METROPOLITAN PLANNING COMMISSION

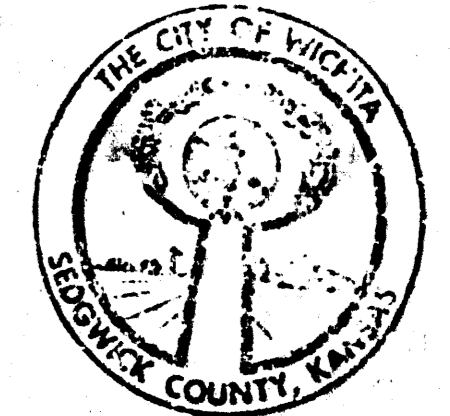
Susan Osborne-Howes
Susan Osborne-Howes, Chairman

Marvin S. Krout
Marvin S. Krout, Secretary



This plat approved and all dedications shown thereon, if any, accepted by the City Council of the City of Wichita, Kansas, this 21st day of MARCH, 1996.

Bob Knight
Bob Knight, Mayor



Pat Burnett
Pat Burnett, Deputy City Clerk

Entered on transfer record this 9th day of April, 1996.

Susan E. Crockett-Spicer
Susan E. Crockett-Spicer, County Clerk

STATE OF KANSAS)
ss.
SEDGWICK COUNTY)

This is to certify that this instrument was filed for record in the Register of Deeds office this 10th day of April, 1996.

Pat Kettler
Pat Kettler, Register of Deeds

Phyllis Hernandez
Ed-Rose Phyllis Hernandez, Deputy

#1518716

