

GENERAL NOTES:

- Existing utility lines and their location, as shown on the plans, represent the best information obtainable for design. The contractor will be required to work around existing utilities within the right-of-way which do not conflict with proposed construction.
- Rubble from the removal of miscellaneous structures and excess excavation which is to be wasted shall be disposed of on site to be provided by the Contractor. These sites shall be approved by the Engineer as to suitability, appearance and site location. Locations that, in the opinion of the Engineer, will leave an unsightly appearance will not be approved.

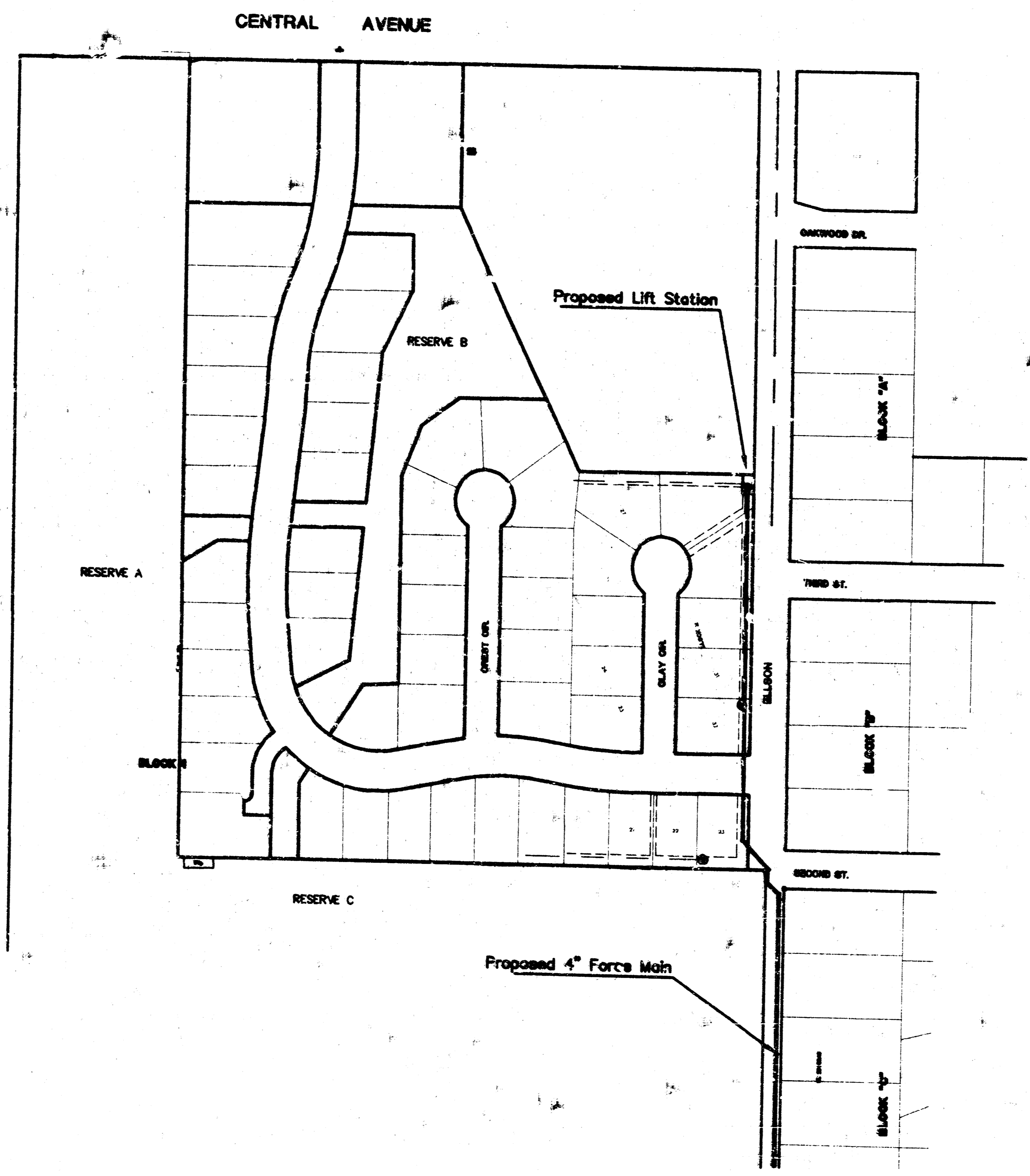
All disposal sites must be approved by the Kansas Department of Health and Environment. Material either stockpiled or disposed of in a flood plain would require a Kansas State Board of Agriculture permit. Any material dumped in waters of the United States or wetlands is subject to U.S. Corps of Engineers permitting regulations. Any material buried or stockpiled beyond approved construction limits would require additional archaeological investigations unless buried in a previously approved borrow location.
- The Contractor shall be responsible for preserving property irons. The Contractor will be required to re-establish any property irons which are damaged or destroyed by his construction operations. Such irons shall be re-established by a licensed land surveyor or a licensed professional engineer in accordance with state laws.
- Trees and shrubs in public right-of-way which are in direct conflict with proposed new construction shall be removed by Contractor with the Engineer's approval. Trees and shrubs which are not in direct conflict with the proposed new construction shall be saved and protected from damage.
- All area disturbed by construction operations shall be seeded with rye grass at a rate of 300 lbs./acre immediately following the construction in that area. Prior to seeding, area shall be prepared per City Specifications.
- The Contractor shall be responsible for coordination of gas as electrical services to be extended and connected to the lift station site as necessary.
- The lump sum price bid for furnishing and installing lift station and miscellaneous appurtenances complete in place shall include all costs for furnishing and installing the lift station module as indicated on the site plan complete in place and in operation. Such lump sum bid shall include the cost of constructing and/or installing compacted subgrade, concrete pad, power pole, electrical conduit electrical wiring, disconnect switch, electrical power supply, natural gas fuel supply, piping, earthwork, compacted fill, finish grading, and other incidentals necessary to complete the work.
- The Contractor shall be responsible for the activation and implementation of the lift station to full operational condition as required for acceptance by The City of Wichita.
- The Contractor shall provide and install appropriate signage for the 4" force main as required. The cost of the signage shall be incidental to the 4" Force Main.
- Contractor shall coordinate with construction of Lateral 133 War Industries Improvements, Project No. 468-82599.

CONSTRUCTION PLANS
LIFT STATION AND FORCE MAIN
FOUNTAINS 2ND ADDITION

TO
THE CITY OF WICHITA, KANSAS

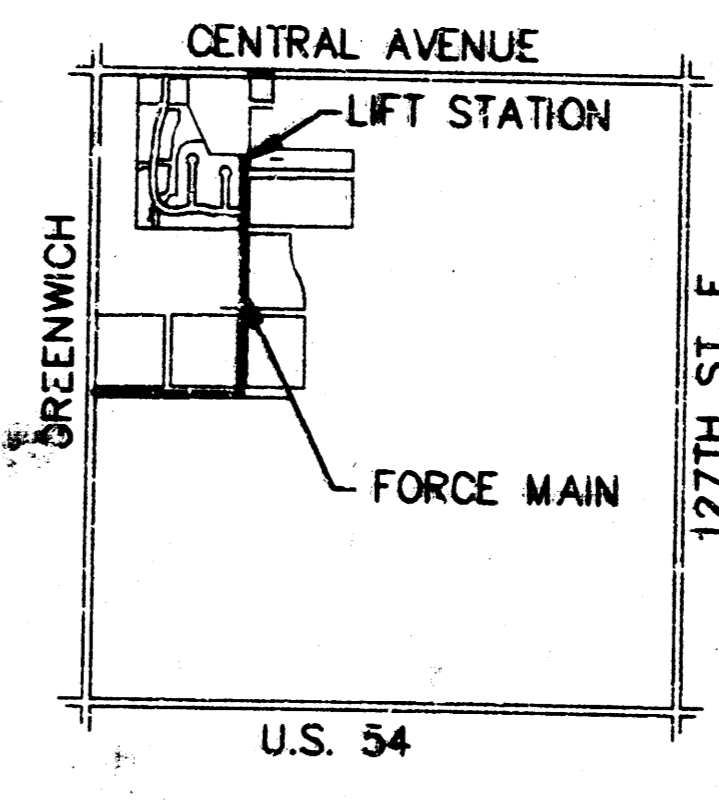
LATERAL 133, WAR INDUSTRIES SEWER

MICHAEL E. LINDEBAK, P.E. - CITY ENGINEER
PROJECT NO. 468-82598
INDEX CODE 742841



INDEX

TITLE SHEET	SHEET 1
PLAN / PROFILE	SHEET 2 - 5
LIFT STATION SITE PLAN	SHEET 6
LIFT STATION DETAIL	SHEET 7
ELECTRICAL RISER PLAN	SHEET 8
TYPE "P" MANHOLE	SHEET 9
AIR RELEASE VAULT DETAIL	SHEET 10
FOUNTAINS 2ND ADDITION PLAT	SHEET 11
GOTT ADDITION	SHEET 12



BENCH MARKS

- (M.S.L. Datum)
- Top of iron in thimble at intersection of Central & Greenwich
Elev. 1376.44
 - Railroad spike in PP 462± E. of NW. Cor. Lot 1, Block 1.
Elev. 1379.42
 - 3-40d nails in base of 10" elm tree 1330± S. and 462± E. of the NW. Cor. of Lot 1, Block 1.
Elev. 1379.17

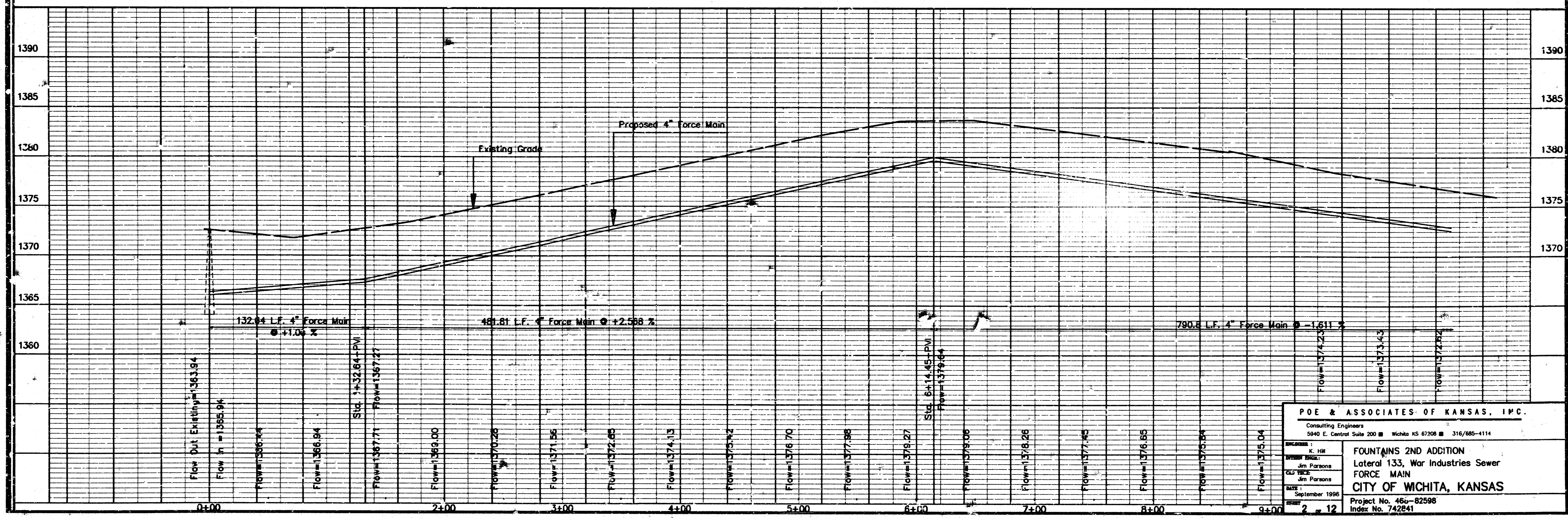
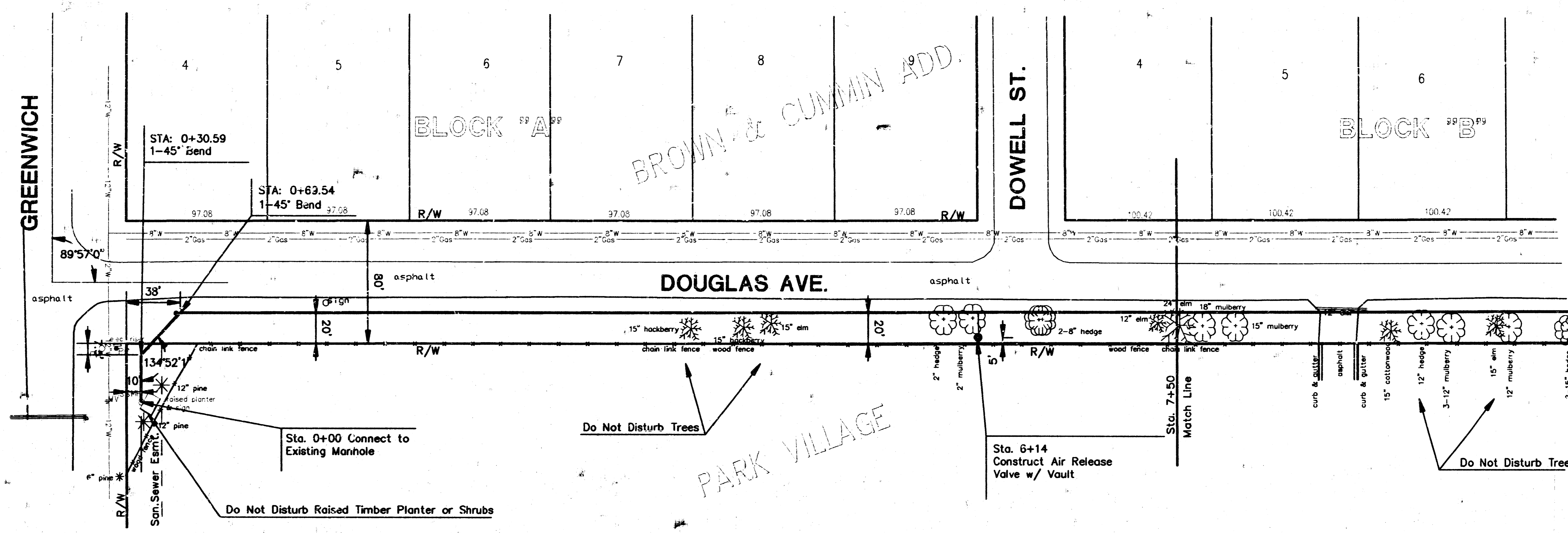
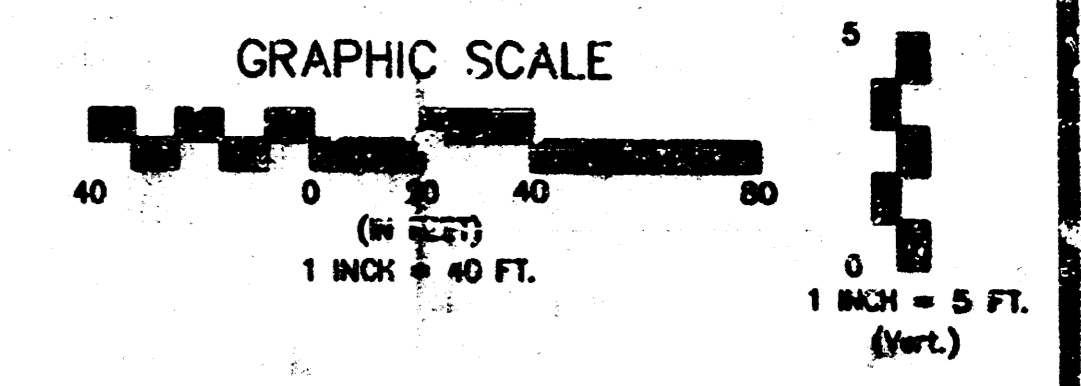
*Booked
N-263
AS BUILT
RDL*

NOVEMBER 1996

PLANS PREPARED BY
POE & ASSOCIATES OF KANSAS, INC.

Consulting Engineers
5940 E. Central Suite 200 Wichita KS 67208 316/85-4114

X:\MPS\DDA\PA\REVISED - Tue Nov 12 09:03:11 1996 Jim Parsons Pae & Assoc.



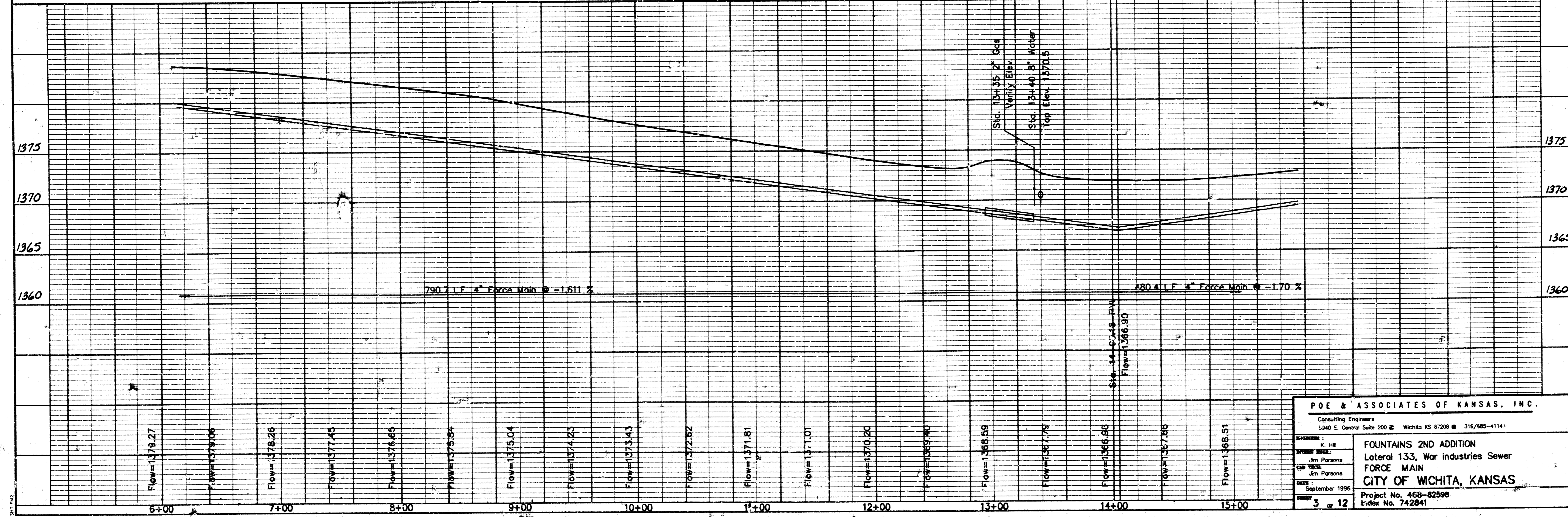
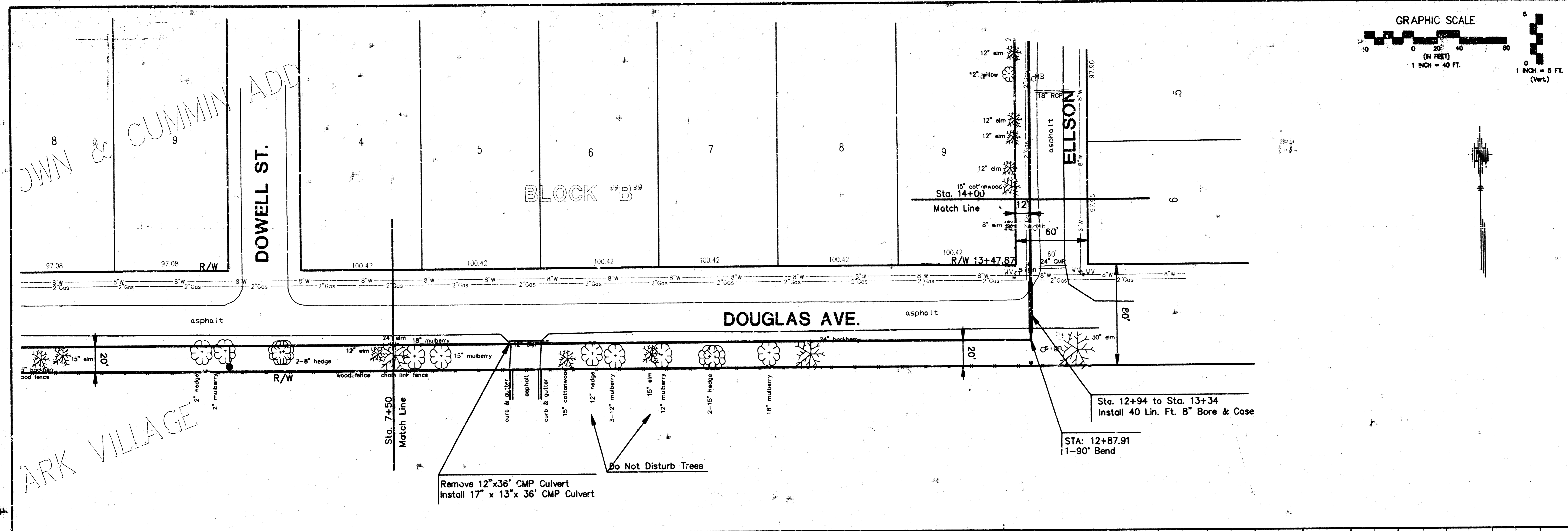
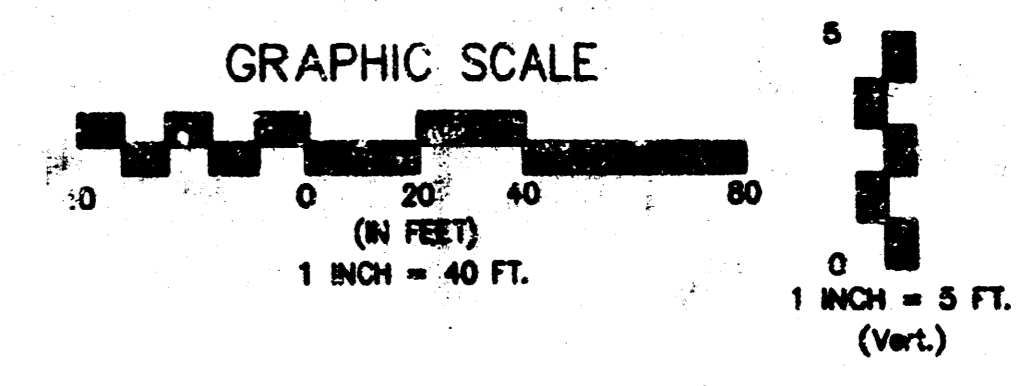
POE & ASSOCIATES OF KANSAS, I.M.C.
 Consulting Engineers
 5940 E. Central Suite 200 ■ Wichita KS 67208 ■ 316/685-1114

PROJECT: FOUNTAINS 2ND ADDITION
 Lateral 133, War Industries Sewer
 FORCE MAIN
 CITY OF WICHITA, KANSAS

DATE: September 1996
 Project No. 466-82598
 Index No. 742841

2 of 12

X:\VPPS\CL\VP\466\H_K_BASE_F01 Nov 1 10:26:16 1996 Jim Parsons Pae & Assoc.



POE & ASSOCIATES OF KANSAS, INC.
Consulting Engineers
5340 E. Central Suite 200 Wichita KS 67208 316/985-4114

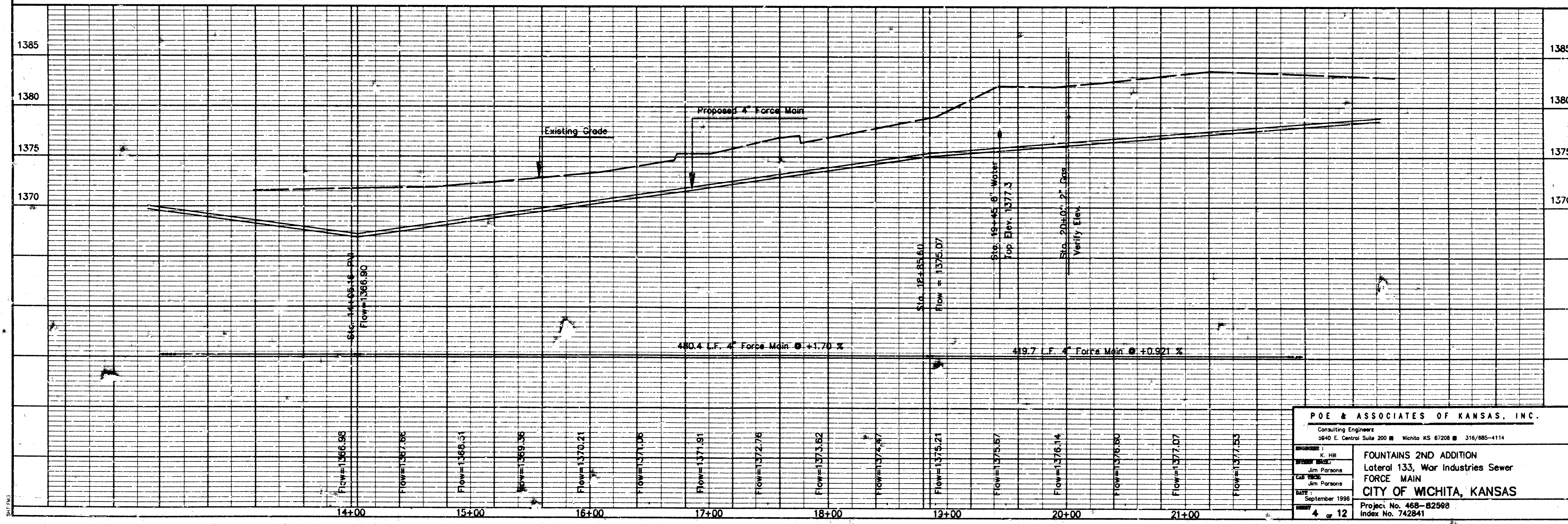
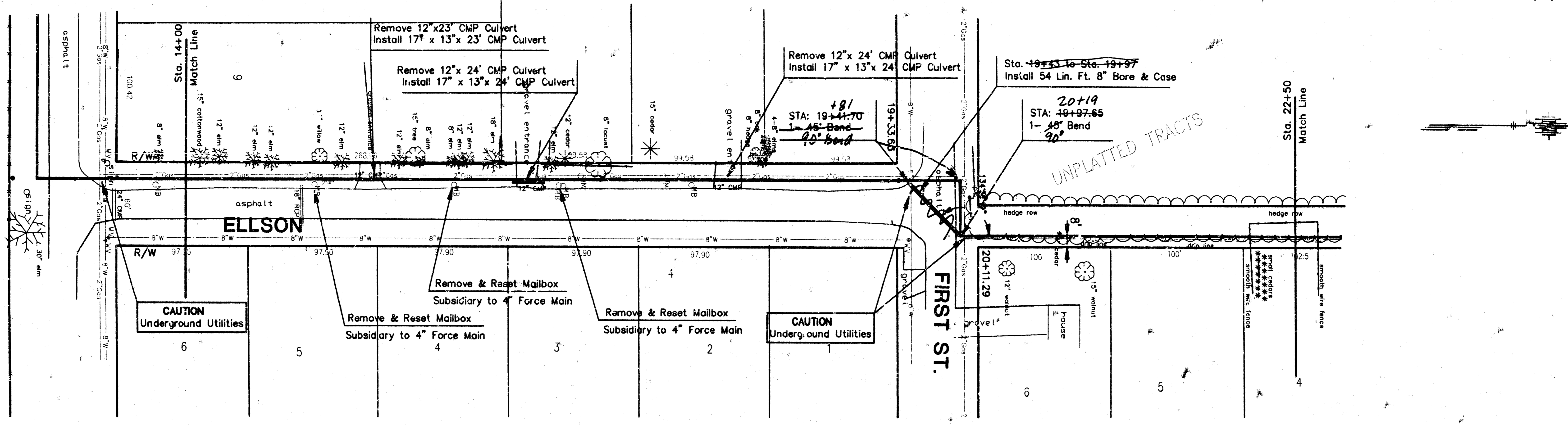
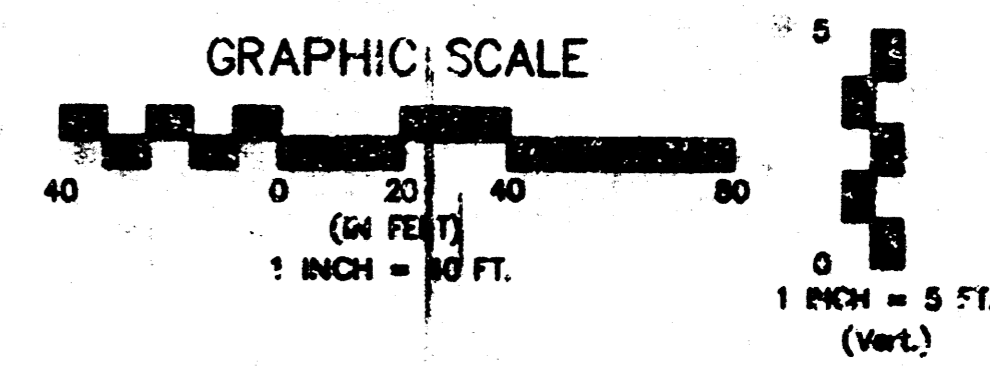
DESIGNED BY: K. Hill
DRAWN BY: Jim Parsons
CHECKED BY: Jim Parsons
DATE: September 1996

PROJECT: FOUNTAINS 2ND ADDITION
Lateral 133, War Industries Sewer
FORCE MAIN
CITY OF WICHITA, KANSAS

Project No. 468-82598
Index No. 742841

3 of 12

X:\UPPS\DATA\PROJECTS\BASE F11 Rev. 1 08.26.97 1995 Jim Parsons Poe & Assoc.



P O E & ASSOCIATES OF KANSAS, INC.
 Consulting Engineers
 2640 E. Central Suite 200 ■ Wichita KS 67208 ■ 316/685-4114

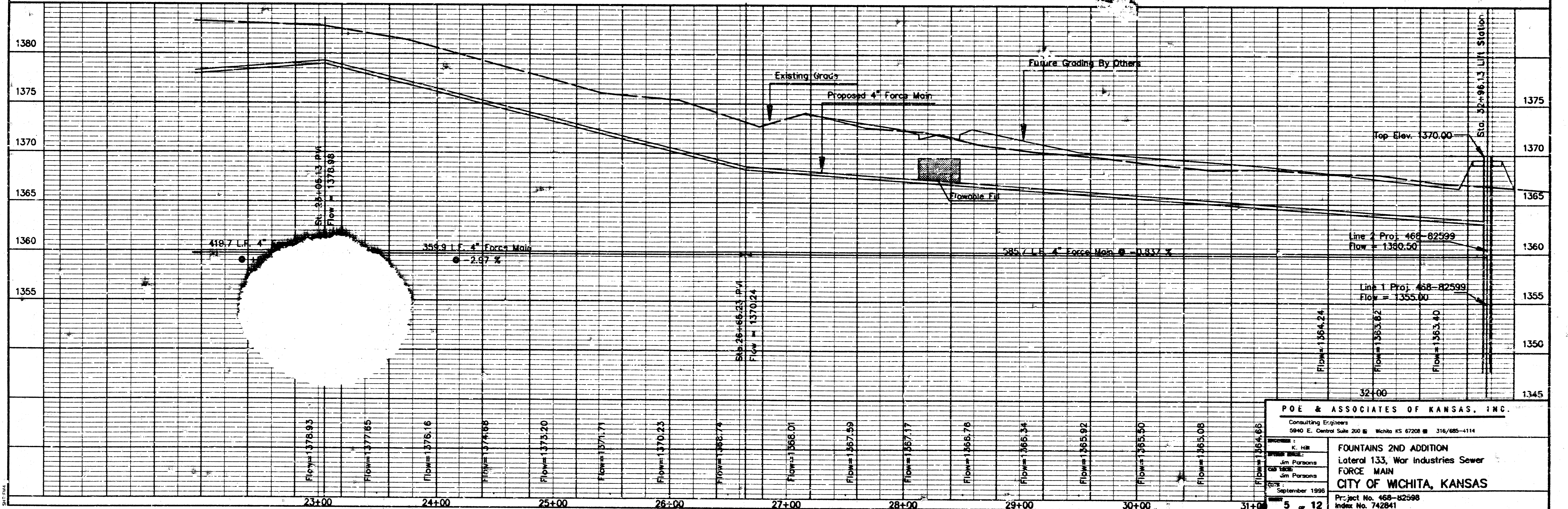
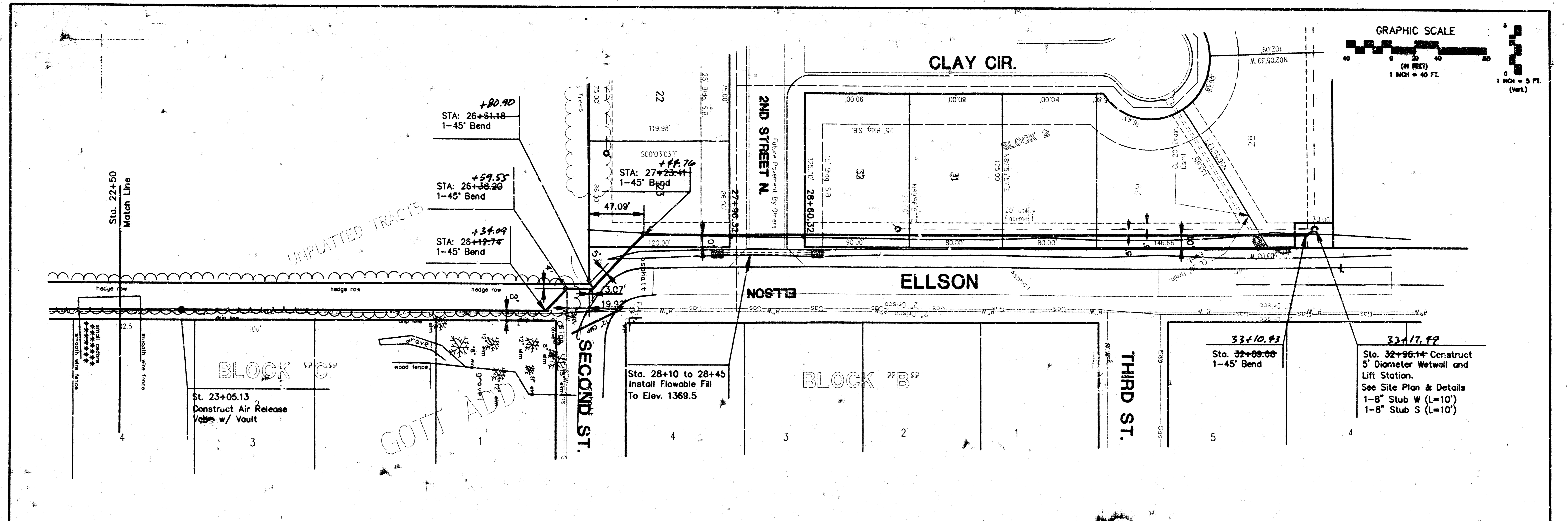
PROJECT: K. Hill
 DRAWN BY: Jim Parsons
 CHECKED BY: Jim Parsons
 DATE: September 1996

FOUNTAINS 2ND ADDITION
 Lateral 133, War Industries Sewer
FORCE MAIN
CITY OF WICHITA, KANSAS

Project No. 468-8298
 Index No. 742841

4 of 12

X:\APPS\DATA\PA\SEWER\BASE Tue Nov 12 14:26:16 1996 Jim Parsons PDE & Assoc.



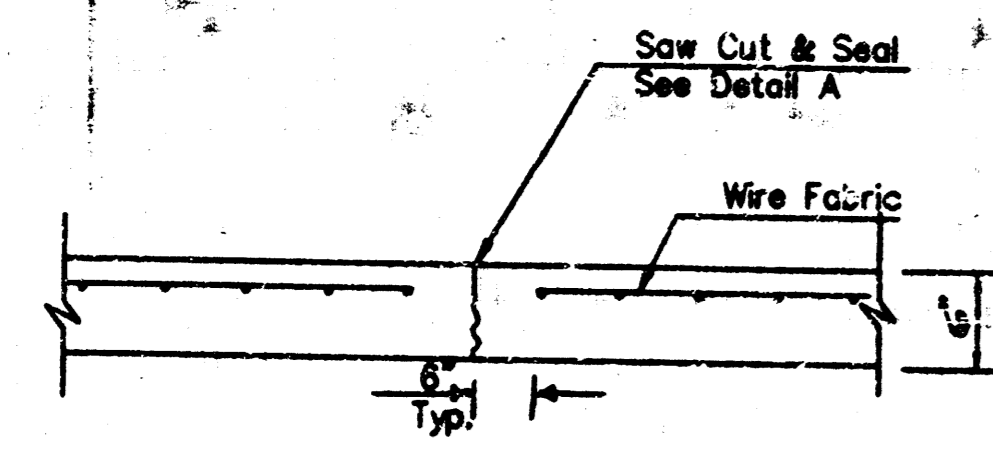
POE & ASSOCIATES OF KANSAS, INC.
 Consulting Engineers
 5940 E. Central Suite 200 Wichita KS 67208 316/625-4114

FOUNTAINS 2ND ADDITION
 Lateral 133, War Industries Sewer
FORCE MAIN
CITY OF WICHITA, KANSAS

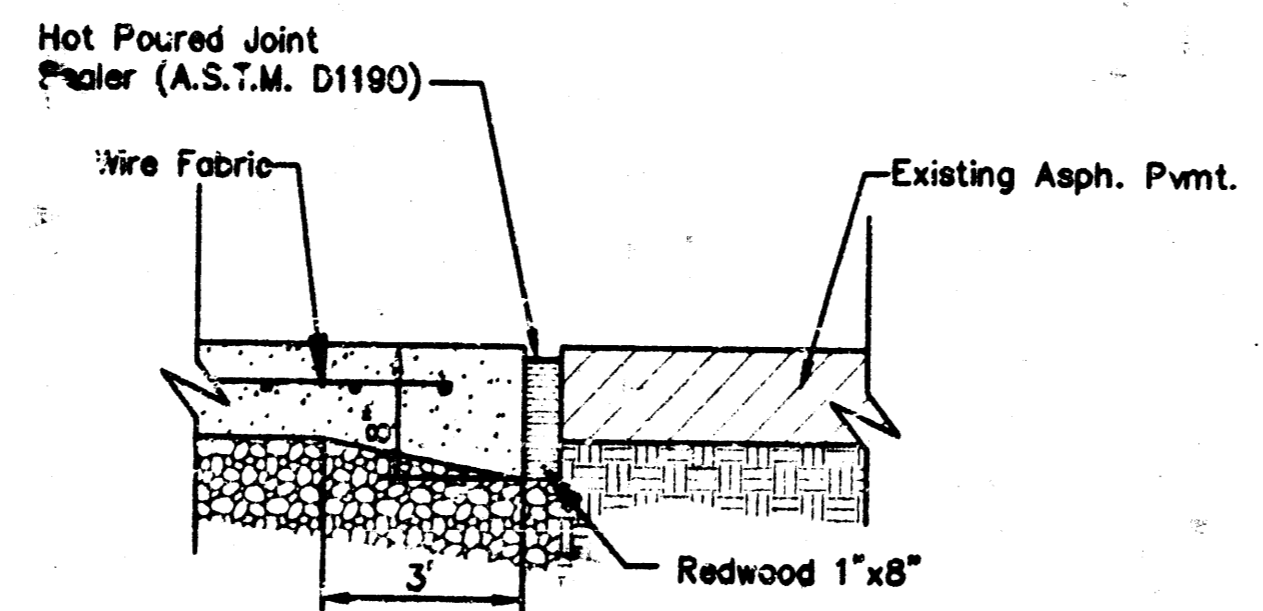
Project No. 468-82598
 Index No. 742841

5 of 12

A:\PROJECTS\468\468\FM_BASE.FT1 Nov 1 08:55:35 1995 Jim Parsons Page 6 Assoc.

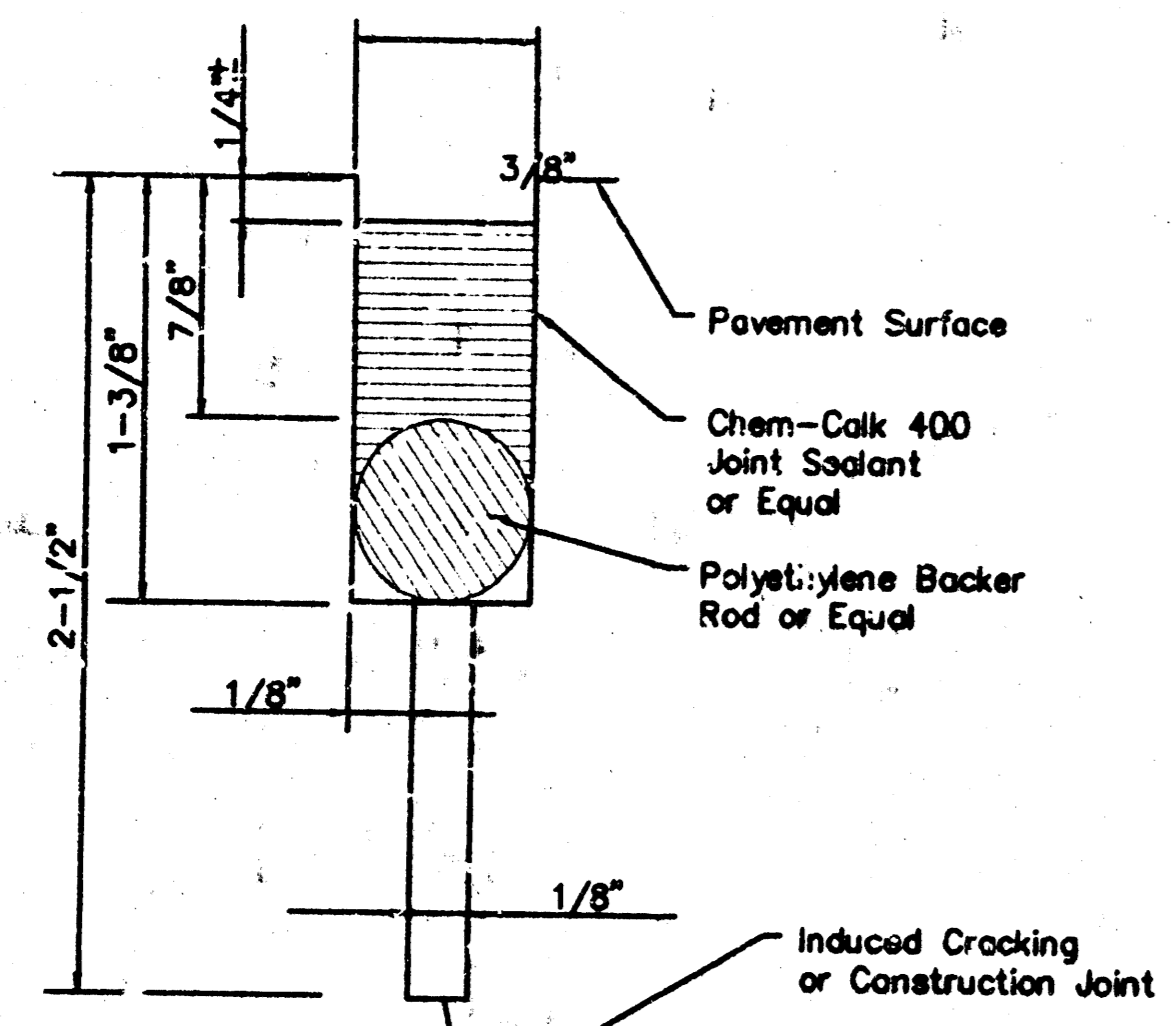


CONTRACTION JOINT DETAIL (CJ)

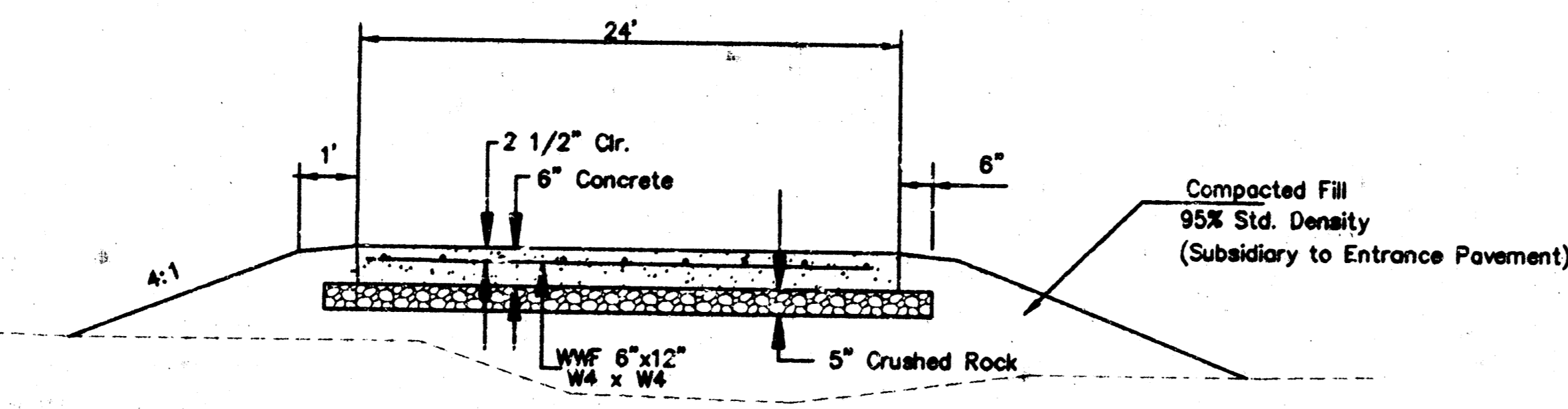


CONNECTION TO EXIST. PAVEMENT

NOTE: Extra thickness to be Subsidiary to Price of Sq. Yds. Pavement

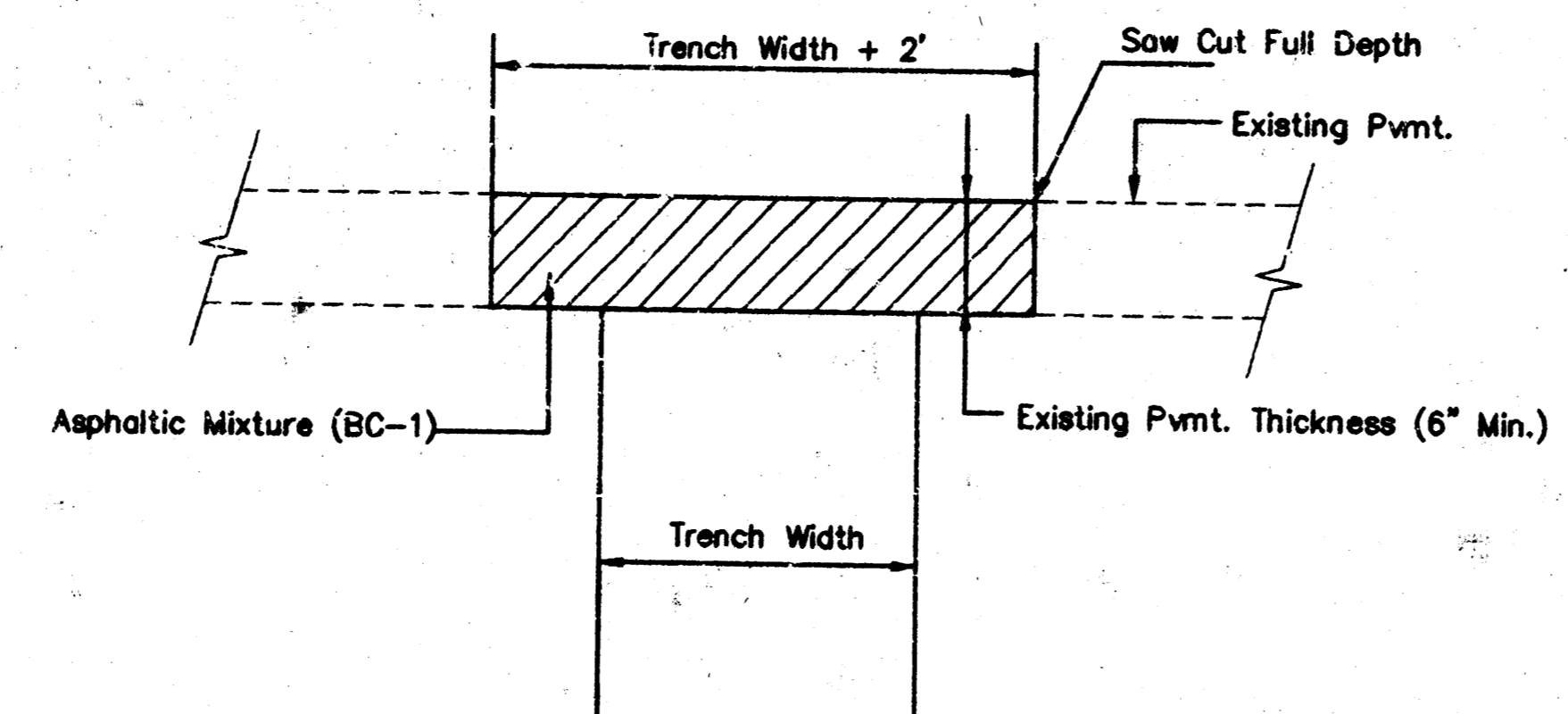


DETAIL A

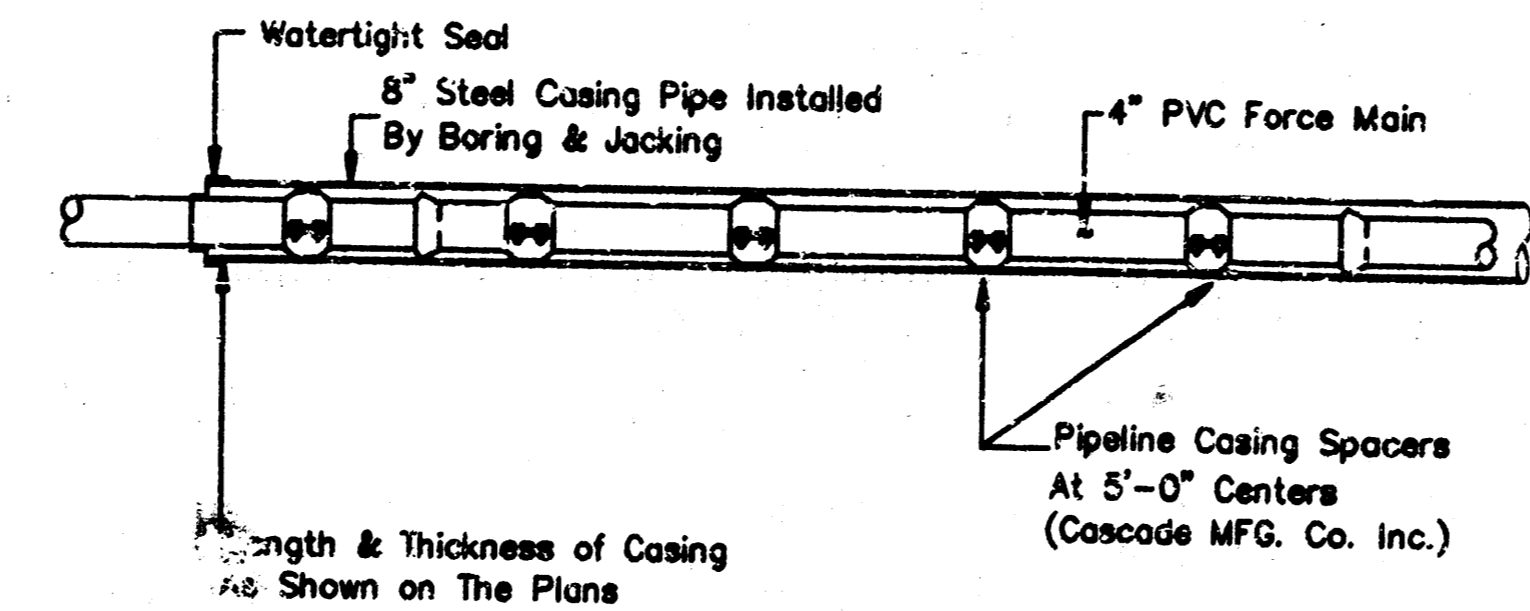


TYPICAL SECTION

LIFT STATION SITE PAVING DETAILS

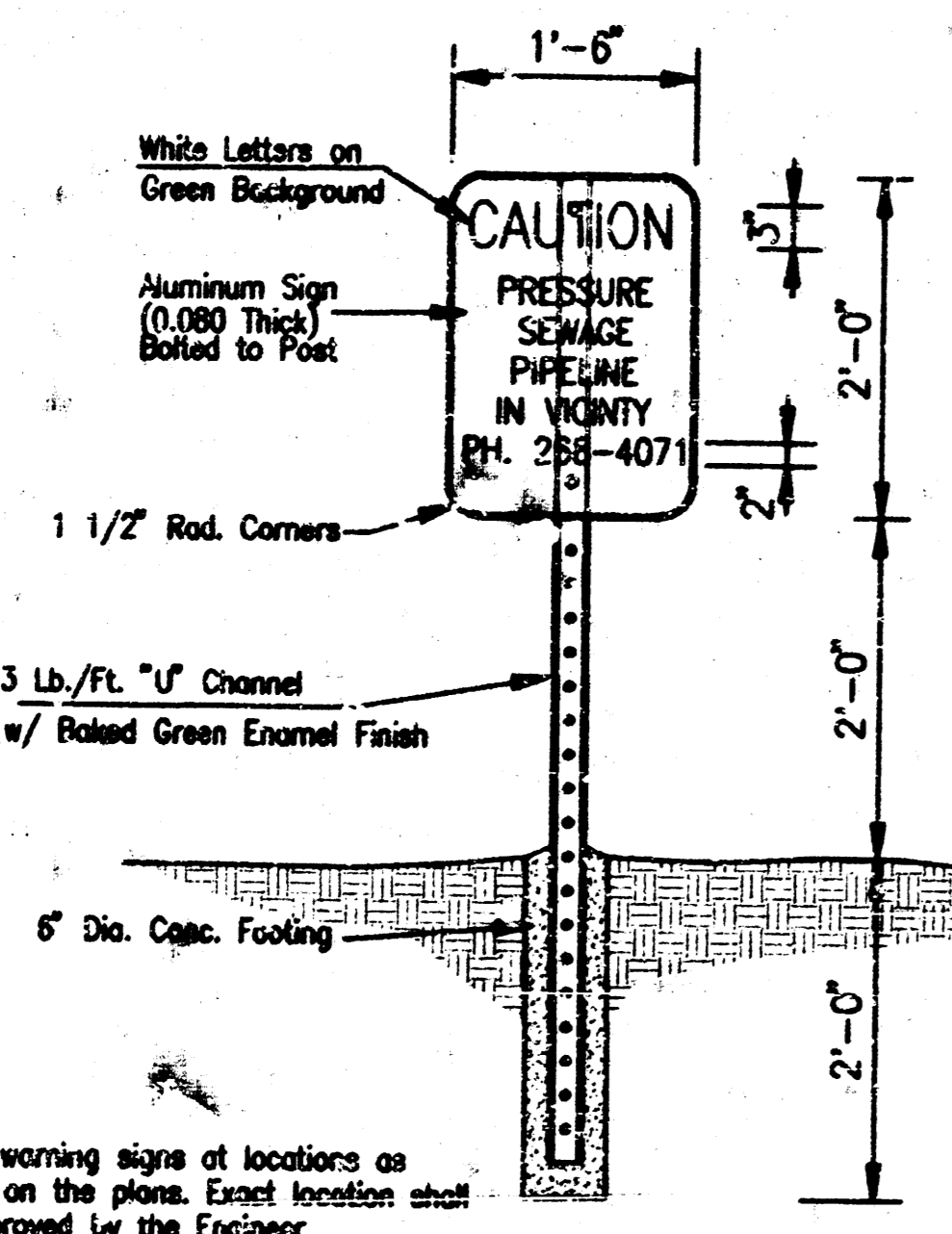


PAVING REPLACEMENT DETAIL



TYPICAL PIPELINE INSTALLATION BY BORING AND JACKING

NO SCALE



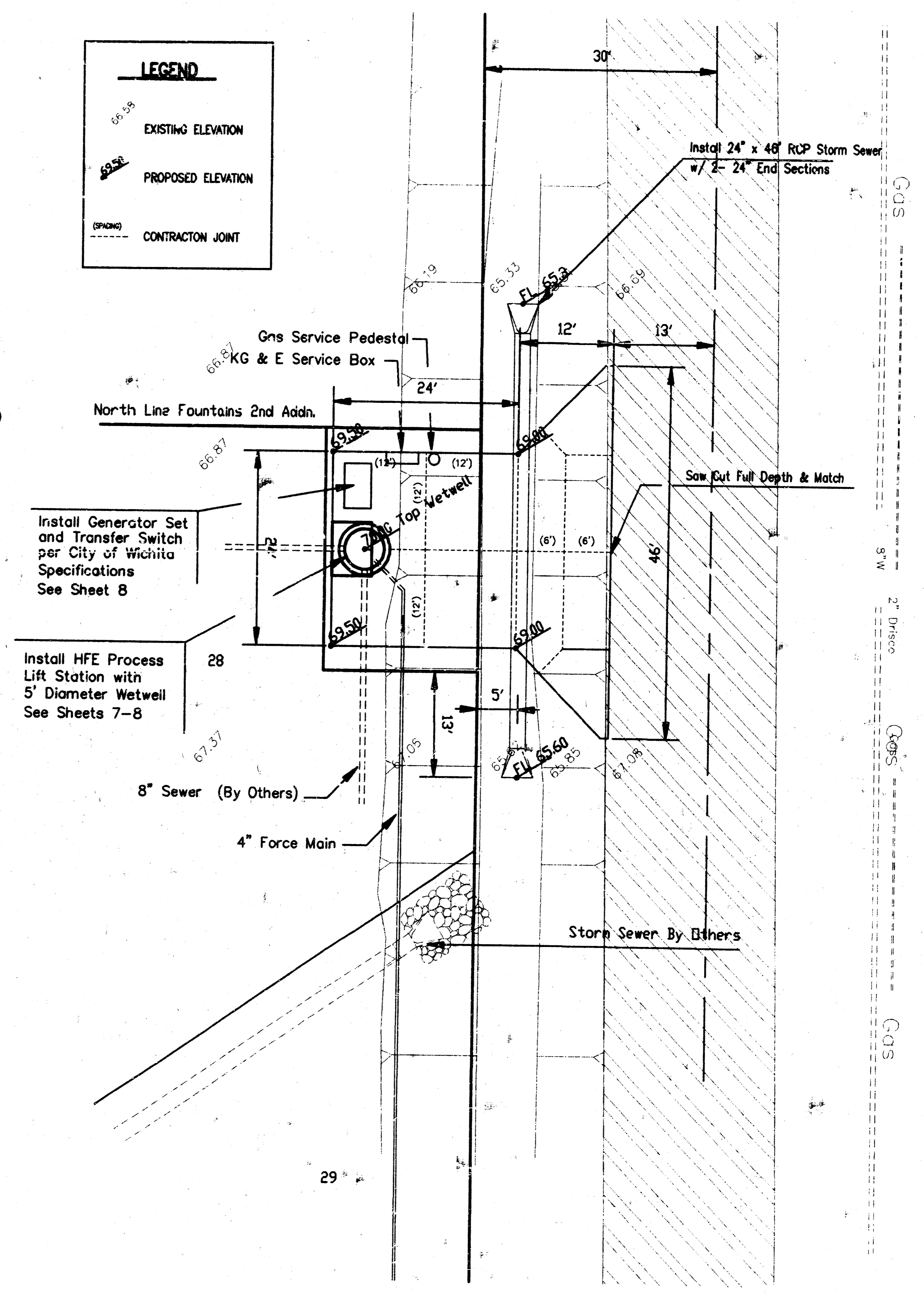
METAL WARNING SIGN DETAIL

no scale

STATION	ELEVATION
0+07	12+57
0+17	13+48
0+27	13+34
0+37	23+11
0+47	25+14
0+57	25+36
0+67	25+59
0+77	27+97
0+87	28+59

LEGEND

- EXISTING ELEVATION
- PROPOSED ELEVATION
- CONTRACTION JOINT



HFE PROCESS LIFT STATION						
Pump No	Model	Design Flow gpm	Total Dynamic Head	Motor HP	Impeller Diameter	RPM
1	4NNTL	100	52	7.5	8.25"	1760
2	4NNTL	100	52	7.5	8.25"	1760

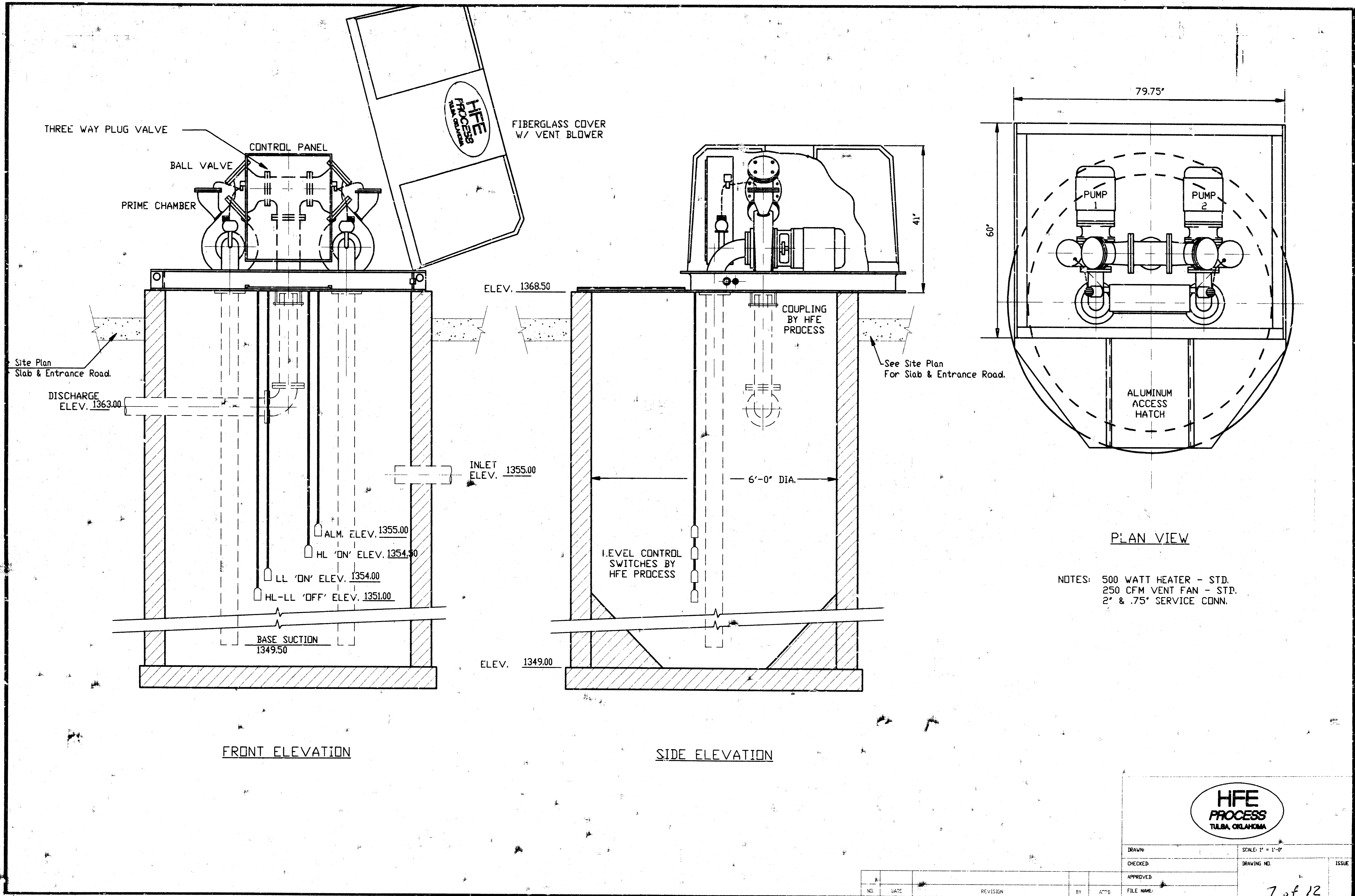
POE & ASSOCIATES OF KANSAS, INC.
 Consulting Engineers
 5940 E. Central Suite 200 ■ Wichita KS 67206 ■ 316/865-4114

PROJECT: K. HSE
OWNER: Jim Parsons
DESIGNER: Jim Parsons
DATE: September 1996

FOUNTAINS 2ND ADDITION
 Lateral 133, War Industries Sewer
SITE PLAN
CITY OF WICHITA, KANSAS

Project No. 468-32598
 Index Code 742841

6 of 12



THREE WAY PLUG VALVE

CONTROL PANEL

BALL VALVE

PRIME CHAMBER

FIBERGLASS COVER
W/ VENT BLOWER

ELEV. 1368.50

Site Plan
Slab & Entrance Road.

DISCHARGE
ELEV. 1363.00

INLET
ELEV. 1355.00

See Site Plan
For Slab & Entrance Road.

ALM. ELEV. 1355.00

HL 'ON' ELEV. 1354.50

LL 'ON' ELEV. 1354.00

HL-LL 'OFF' ELEV. 1351.00

BASE SUCTION
1349.50

6'-0" DIA.

LEVEL CONTROL
SWITCHES BY
HFE PROCESS

ELEV. 1349.00

COUPLING
BY HFE
PROCESS

79.75'

60'

ALUMINUM
ACCESS
HATCH

PLAN VIEW

NOTES: 500 WATT HEATER - STD.
250 CFM VENT FAN - STD.
2" & .75" SERVICE CONN.

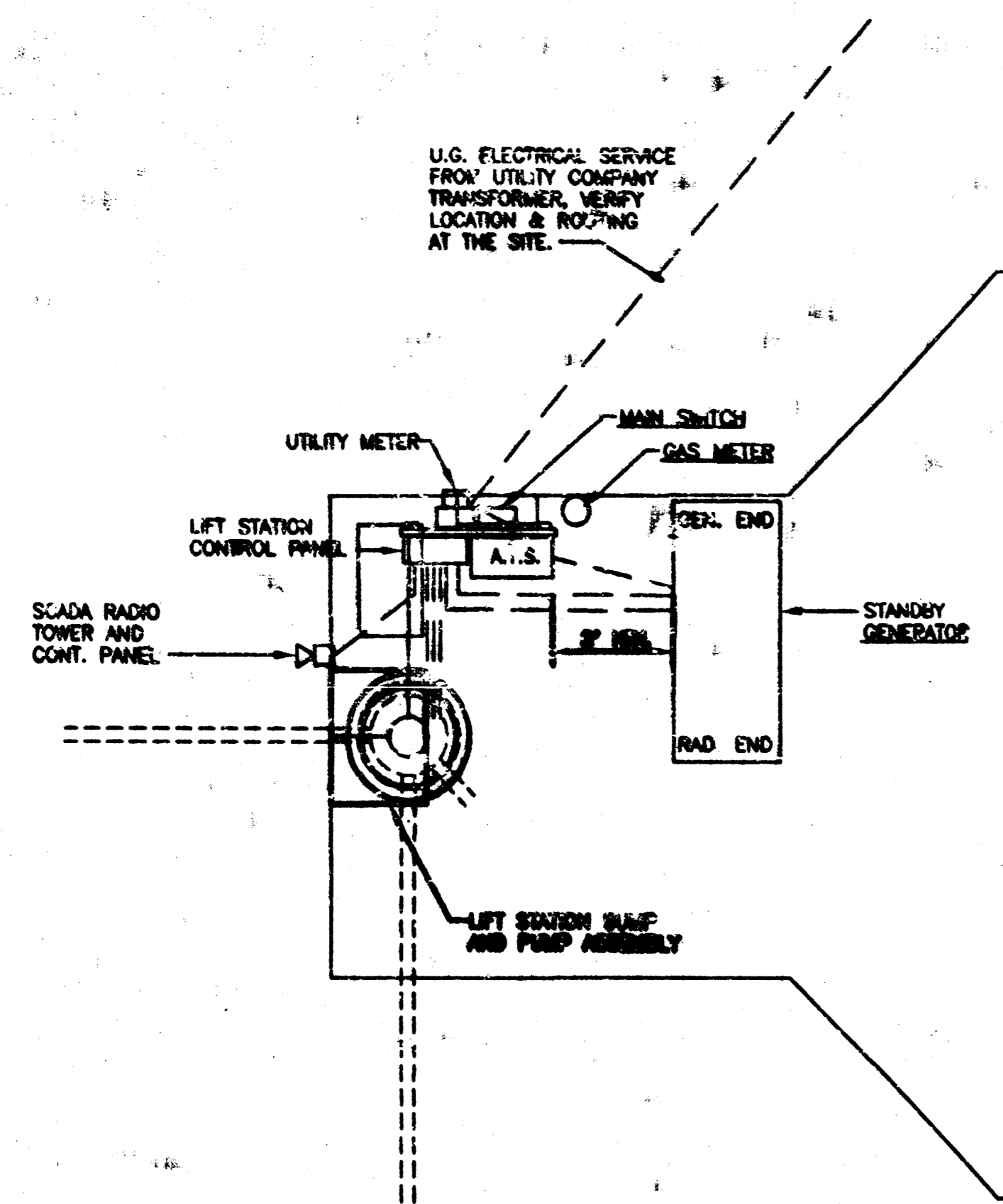
FRONT ELEVATION

SIDE ELEVATION

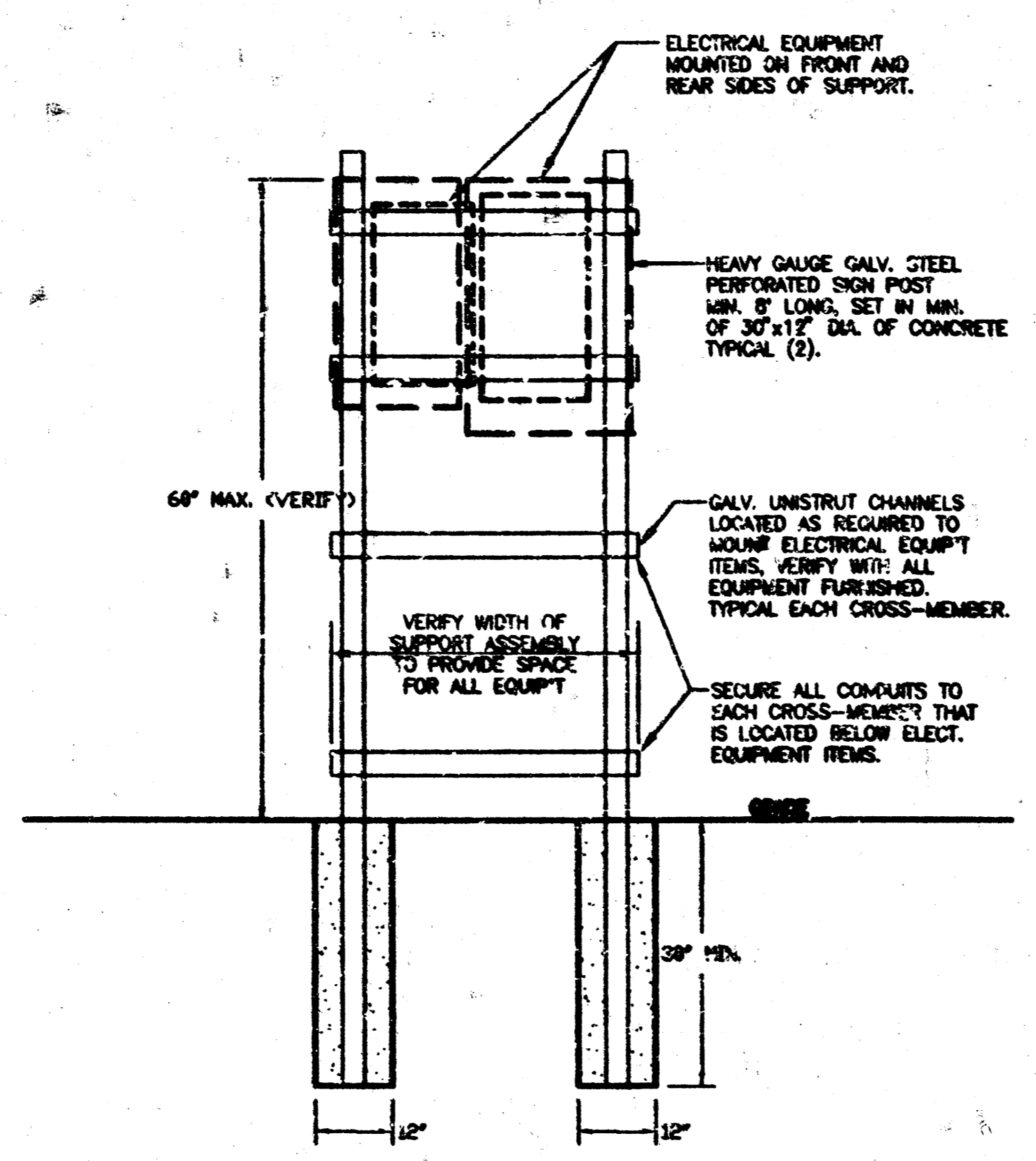


DRAWN		SCALE: 1" = 1'-0"	
CHECKED		DRAWING NO.	ISSUE
APPROVED			
NO.	DATE	REVISION	BY
FILE NAME:		7 of 12	

X:\MAPS\DA\1455\PM BASE Tue Nov 12 08:29:57 1996 Jim Parsons Pae & Assoc.



**ELECTRICAL PLAN
LIFT STATION**
SCALE 1" = 4'-0"



**ELECTRICAL EQUIPMENT
MOUNTING SUPPORT DETAIL**
NO SCALE

FEEDER SCHEDULE

MARK	DESCRIPTION
①	4 #1 IN 1 1/2" PVC CONDUIT
②	4 #1 IN 1 1/2" GRS CONDUIT
③	4 #1 & 1 #6 GROUND IN 1 1/2" GRS CONDUIT
④	4 #1 & 1 #6 GROUND IN 1 1/2" PVC CONDUIT
⑤	2 #12 & 1 #12 GROUND IN 1 1/2" PVC CONDUIT
⑥	3 #6 & 1 #10 GROUND IN 3/4" PVC CONDUIT
⑦	8 #12 IN 3/4" PVC CONDUIT - VERIFY
⑧	WIRING TO SCADA CONTROL PANEL & TOWER, VERIFY CONDUCTOR SIZES & QUANTITIES AND CONDUIT SIZE

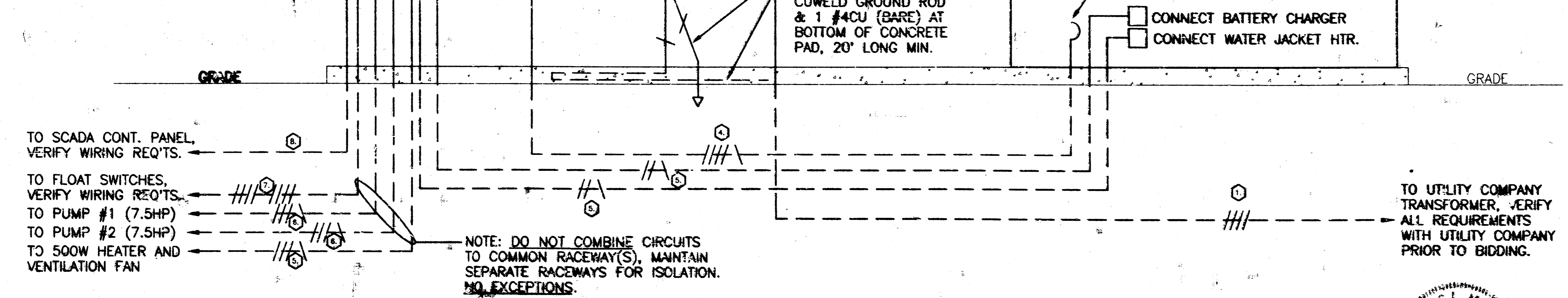
NOTES:
 1. ALL BELOW GRADE CONDUITS TO BE SCH. 40 PVC. TRANSITION TO SCH. 80 PVC PRIOR TO RISING VERTICALLY TO ABOVE GRADE.
 2. ALL RACEWAYS ROUTED ABOVE GRADE SHALL BE SCH. 80 PVC CONDUIT EXCEPT WHERE INDICATED ABOVE TO BE GRS.
 3. ALL CONDUCTORS TO BE COPPER, TYPE THHN.

SYMBOL LIST

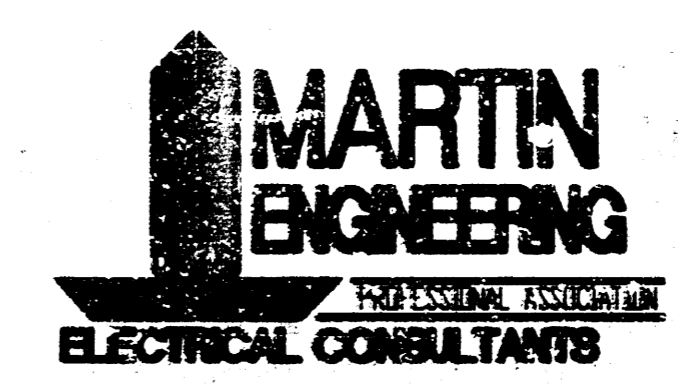
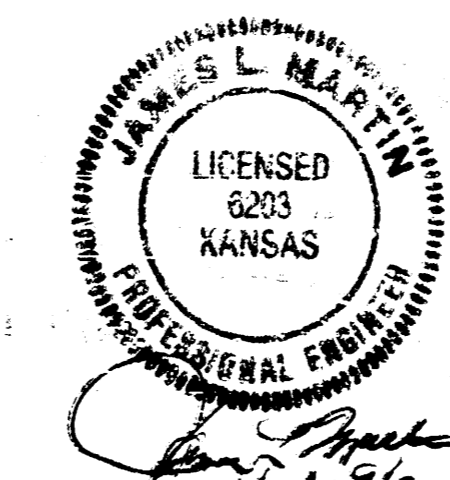
SYMBOL	DESCRIPTION	MOUNTING
⊖	GFCI RECEPTACLE, PAS #2091-SI SERIES	1'-3" AFF
⊕	DUPLEX GROUNDED RECEPTACLE	1'-3" AFF
⊞	JUNCTION BOX	
⊞	BUSS #SSY BOX COVER UNIT & FUSIST	①
⊞	HEAVY DUTY SAFETY SWITCH (SIZE AS NOTED)	6'-0" TO TOP
⊞	SURFACE MOUNTED ELECTRICAL PANELBOARD	5'-0" TO TOP
⊞	CONDUIT RUN, 2#12 & 1#12 GROUND - 1/2" C.	WALL/CEILING
⊞	CONDUIT RUN, 2#12 & 1#12 GROUND - 1/2" C.	WALL/CEILING
⊞	CONDUIT RUN, 2 CIRCUIT, 3#12 - 1/2" C.	EARTH FLOOR
⊞	WEATHERPROOF	

1. MOUNT FUSISTS IN HOUSING OF EQUIPMENT SERVED.
- GENERAL NOTES:**
- VERIFY ALL OUTLET LOCATIONS ON THE JOG PRIOR TO ROUGH-IN. REFER TO ARCHITECTURAL, MECHANICAL AND STRUCTURAL PLANS AND SPECIFICATIONS FOR RELATED INFORMATION.
 - REFER TO THE SPECIFICATION DOCUMENTS FOR DATA NOT INDICATED ON THE ELECTRICAL DRAWINGS.
 - REFER TO THE LIFT STATION PLANS & SPECIFICATIONS FOR EXACT LOCATIONS OF LIFT STATION EQUIPMENT AND CONTROL WIRING REQUIREMENTS.
 - COORDINATE CONDUIT LOCATIONS WITH EQUIPMENT AND CONCRETE FORMS, SUCH THAT CONDUITS WILL NOT BE DAMAGED.
 - ALL RACEWAYS FOR LIGHTING, RECEPTACLE & POWER CIRCUITS SHALL BE PROVIDED WITH FULL-LENGTH, CODE-SIZED, GREEN INSULATED GROUNDING/BONDING CONDUCTOR - NO EXCEPTIONS. NOT ALL CIRCUITS ARE SHOWN ON THE PLANS WITH AN INDICATION OF THIS REQUIRED GROUNDING/BONDING CONDUCTOR. IT IS HOWEVER REQUIRED AS IF SHOWN. CONDUCTOR SIZES AS MAY BE INDICATED ON THE PLANS ARE MINIMUMS.
 - ALL RACEWAYS ROUTED BELOW GRADE SHALL BE MIN. SCHEDULE 40 PVC UNLESS SPECIFICALLY NOTED OTHERWISE ON THE PLANS. PVC CONDUIT ROUTED ABOVE GRADE SHALL BE SCH. 80 - NO EXCEPTIONS.

NOTE:
 LIFT STATION CONTROL PANEL TO CONTAIN THE FOLLOWING BRANCH CIRCUIT BREAKERS,
 (2) 50A-3P-240V, PUMPS 1 & 2
 (1) 20A-1P-120V, SCADA PANEL
 (1) 20A-1P-120V, GEN. BATT. CHARGER
 (1) 20A-1P-120V, GEN. JACKET HEATER
 PROVIDE TIME INTERLOCK SUCH THAT SECOND PUMP CAN NOT START UNTIL 30 SECONDS AFTER FIRST PUMP STARTS



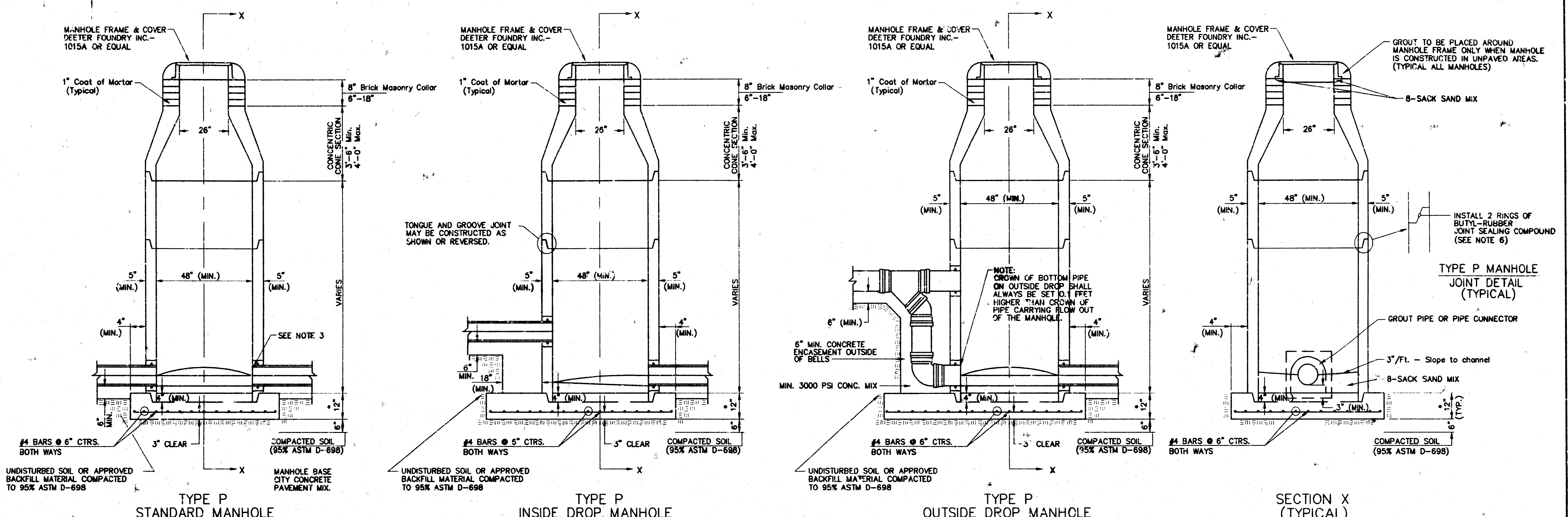
LIFT STATION ELECTRICAL RISER DIAGRAM



POE & ASSOCIATES OF KANSAS, INC.	
Consulting Engineers 5940 E. Central Suite 200 ■ Wichita, KS 67208 ■ 316/685-4114	
PROJECT MANAGER: K. Hill	FOUNTAINS 2ND ADDITION Lateral 133, Wor Industries Sewer ELECTRICAL CITY OF WICHITA, KANSAS
DESIGNER: Jim Parsons	
CHECKED BY: Jim Parsons	Project No.
DATE: September 1996	8 of 12

X:\VIPS\DOCA\PI\05\ELEC Tue Oct 1 09 06:14 1996 Jim Parsons Pgs 4 Assoc.

SEWER APPURTENANCES DETAILS



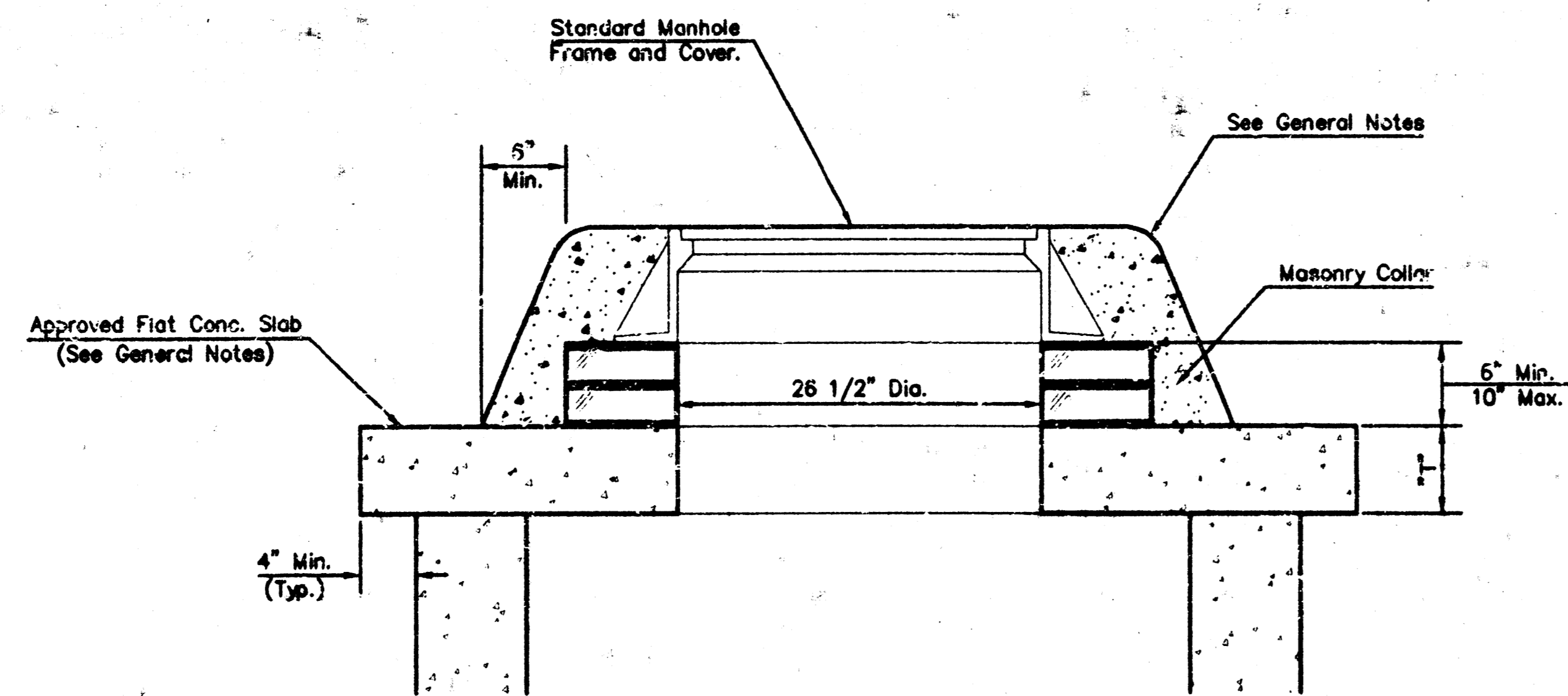
TYPE P STANDARD MANHOLE
TYPE P INSIDE DROP MANHOLE
TYPE P OUTSIDE DROP MANHOLE
SECTION X (TYPICAL)

- GENERAL NOTES**
- PRECAST MANHOLE NOTES**
- ALL PRECAST CONCRETE MANHOLE SECTIONS SHALL CONFORM TO THE LATEST REVISIONS OF A.S.T.M. C478 AS MODIFIED BY THE SPECIFIC NOTES.
 - NON-SHRINK GROUT SHALL BE NON-METALLIC TYPE.
 - APPROVED FLEXIBLE WATERSTOP GASKETS SHALL BE INSTALLED TO JOIN THE SEWER TO THE MANHOLE WALL WHEN A.B.S. COMPOSITE PIPE OR P.V.C. PIPE IS USED. FOR OTHER TYPES OF PIPE THE SEWER SHALL BE GROUTED IN PLACE WITH NON-SHRINK GROUT. THE SEWER PIPE SHALL BE SUPPORTED WITH CONCRETE ENCASEMENT A MINIMUM OF 3 FEET FROM THE MANHOLE WALL AND TO THE FIRST JOINT FOR V.C.P. SUCH THAT THE JOINT REMAINS FLEXIBLE.
 - ALL INSIDE SURFACES OF THE CONCRETE MANHOLE WHICH WOULD BE EXPOSED TO SEWER GAS SHALL BE COATED WITH 2 COATS TNEPEC SERIES 66 HI-BUILD EPXYOLINE, DRY THICKNESS OF 8 MILS (MIN.).
 - EXTERIOR MANHOLE WALLS SHALL BE COATED WITH 1 COAT MOBILARMA 633 BITUMINOUS COATING.
 - JOINT SEALING COMPOUND SHALL BE KENT SEAL NO. 2 OR APPROVED EQUAL.
 - PRECAST MANHOLES SHALL BE SET AT LEAST 4 INCHES INTO THE MANHOLE BASE.
 - TOP OF MANHOLE FLOOR SLAB SHALL BE AT LEAST 3 INCHES BELOW THE FLOW LINE OF THE OUTLET PIPE TO INSURE SUFFICIENT MINIMUM THICKNESS OF SHAPED INVERT.
 - LIFTING HOLES SHALL BE FILLED WITH NON-SHRINK GROUT AND THE INTERIOR SURFACE COATED AS SPECIFIED.
 - MORTAR USED IN MASONRY CONSTRUCTION SHALL CONTAIN 8 BAGS OF CEMENT PER CUBIC YARD. CONCRETE USED IN MANHOLE BASES SHALL CONFORM TO THE REQUIREMENTS OF CONCRETE FOR CONCRETE PAVEMENT CONSTRUCTION AS SPECIFIED IN THE CITY STANDARD PAVING SPECIFICATIONS USING CITY CONCRETE PAVEMENT MIX WITHOUT AIR ENTRAINING ADMIXTURE. MORTAR SHALL BE PLACED AROUND THE MANHOLE RING AS SHOWN ON THE DRAWINGS WHEN MANHOLES ARE CONSTRUCTED IN UNPAVED AREAS. MANHOLES CONSTRUCTED WHERE PIPE SIZES ARE SMALLER THAN 24" SHALL HAVE AN INSIDE DIAMETER OF 4". MANHOLES CONSTRUCTED WHERE PIPE SIZES ARE 24" OR LARGER SHALL HAVE AN INSIDE DIAMETER OF 5". COMPLETED MANHOLE SHALL BE WITHOUT LEAKS AND WATER TIGHT.
 - REINFORCING STEEL SHALL BE INSTALLED IN THE MANHOLE BASES AND SHALL CONSIST OF NO. 4 BARS PLACED ON 6" CENTERS IN BOTH DIRECTIONS. THE MANHOLE BASE REINFORCEMENT SHALL BE PLACED AT LEAST 3" ABOVE THE BOTTOM OF THE MANHOLE BASE. ALL COSTS FOR FURNISHING AND INSTALLING REINFORCING STEEL SHALL BE INCLUDED IN THE UNIT PRICE BID FOR THE MANHOLE.
 - OPENINGS SHALL BE CUT INTO THE MANHOLE WALL WHEN OUTSIDE DROPS ARE CONSTRUCTED ON EXISTING MANHOLES. SUCH OPENINGS CUT INTO EXISTING MANHOLES SHALL BE AS SMALL AS PRACTICAL TO FACILITATE INSTALLING AND GROUTING THE NEW PIPE IN PLACE. WATERSTOP GASKETS SHALL BE USED WITH P.V.C. AND A.B.S. COMPOSITE PIPE. THE NEW PIPE SHALL BE GROUTED INTO THE OPENING USING AN APPROVED NONSHRINK GROUT FOR THE FULL MANHOLE WALL THICKNESS. THE EXTERIOR OF THE COMPLETED CONNECTION SHALL BE SEALED WITH AN APPROVED BITUMINOUS COATING SUCH THAT THE CONNECTION WILL BE WATER TIGHT. FLOOR OF MANHOLE SHALL BE MODIFIED TO FORM NEW FLOW CHANNEL FOR THE NEW CONNECTION AS INDICATED BY THE DRAWING. THIS WORK, INCLUDING MODIFICATION OF MANHOLE FLOOR, SHALL BE PAID FOR AT THE UNIT PRICE BID FOR OUTSIDE DROP STACK CONSTRUCTED ON EXISTING MANHOLE.
 - THE FLOORS OF ALL MANHOLES SHALL BE SHAPED WITH FLOW CHANNELS SUCH THAT THE MANHOLES WILL BE SELF-CLEANING AND FREE OF AREAS WHERE SOLIDS COULD BE DEPOSITED. SEWAGE FLOWS THROUGH THE MANHOLE FROM ALL INLET PIPES. THE OUTLET PIPE FLOW CHANNELS SHALL BE FORMED TO MATCH THE BOTTOM HALVES OF THE INFLOWING PIPES AND THE OUTFLOWING PIPE AS SHOWN BY THE DRAWINGS EXCEPT FOR INSIDE DROP MANHOLES. FLOW CHANNELS FOR INSIDE DROP MANHOLES SHALL BE CONSTRUCTED AS INDICATED BY THE DRAWING. MANHOLE FLOORS SHALL HAVE SLOPES OF 3 INCHES PER FOOT IN THE AREAS OUTSIDE OF THE FLOW CHANNELS SLOPED TOWARD THE FLOW CHANNELS. PIPES LAID THROUGH MANHOLES SHALL HAVE THE TOP HALF REMOVED TO HEAT LINES FOR THE FULL INSIDE DIAMETER OF THE MANHOLE. MANHOLE FLOORS SHALL THEN BE SHAPED AROUND THE BOTTOM HALF OF THE PIPE WHICH FORMS THE FLOW CHANNEL.
 - PIPES INSTALLED WITHIN THE EXCAVATION MADE FOR THE MANHOLE SHALL BE CRADLED WITH CONCRETE TO THE LIMITS OF THE MANHOLE EXCAVATION. WHEN CLAY PIPE IS USED, THE CRADLE SHALL EXTEND TO THE FIRST JOINT OUTSIDE THE MANHOLE. THE CRADLE SHALL BE TERMINATED AT THE CLAY PIPE JOINT IN A MANNER WHICH WILL MAINTAIN THE FLEXIBILITY OF THE JOINT. COST OF CRADLE WITHIN MANHOLE EXCAVATION OR TO CLAY PIPE JOINTS ADJACENT TO MANHOLE SHALL BE INCLUDED IN THE UNIT PRICE BID FOR THE MANHOLE.
 - MANHOLE COVER CASTINGS AND MANHOLE FRAME CASTINGS SHALL CONFORM TO THE REQUIREMENTS AS INDICATED IN THE STANDARD SPECIFICATIONS AND AS SHOWN IN THE STANDARD DETAIL DRAWING.
 - THE VERTICAL DROP IN INSIDE DROP MANHOLES SHALL NOT EXCEED 2' FOR INFLOWING PIPES SIZED 12" OR SMALLER AND 2' FOR INFLOWING PIPES LARGER THAN 12". THE CROWNS OF INFLOWING PIPES SHALL NEVER BE SET LOWER THAN THE CROWN OF THE OUTFLOWING PIPE.
 - STANDARD MANHOLES AND STANDARD INSIDE DROP MANHOLES SHALL BE BID AS STANDARD MANHOLES FOR THE TYPE AND DIAMETER INDICATED. OUTSIDE DROP MANHOLES SHALL BE BID AS STANDARD OUTSIDE DROP MANHOLES FOR THE TYPE AND DIAMETER INDICATED. ALL MANHOLE DIAMETERS WILL BE 4' UNLESS INDICATED OTHERWISE.
 - A BRICK MASONRY COLLAR SHALL BE INSTALLED BETWEEN THE CAST IRON FRAME AND THE CONCENTRIC CONE. THE COLLAR WILL HAVE 8" WALLS AND A VERTICAL HEIGHT OF 6" MINIMUM AND 18" MAXIMUM. A 1" COAT OF MORTAR WILL BE PLASTERED ON THE OUTSIDE OF THE COLLAR. THE USE OF PRE-CAST CONCRETE SPACERS FOR MANHOLE TOP ADJUSTMENT IS ALSO ALLOWED.
 - ALL MANHOLE BASE CONSTRUCTION THAT OCCURS IN THE FIELD MUST HAVE A MINIMUM OF EIGHT INCHES OF CONCRETE BELOW THE MANHOLE WALL AND THE WALL SECTION SHOULD EXTEND FOUR INCHES INTO THE BASE RESULTING IN A MINIMUM TOTAL BASE THICKNESS OF 12 INCHES. MONOLITHIC BASE SECTIONS CONSTRUCTED IN THE FACTORY AND CURED 1/4S PER ASTM C478 MUST HAVE A MINIMUM EIGHT INCH THICK CONCRETE BASE. BASE SECTIONS CONSTRUCTED IN THE FACTORY UTILIZING A PREVIOUSLY MANUFACTURED MANHOLE WALL SECTION, AS OUTLINED IN THE ABOVE PARAGRAPH, MUST HAVE A MINIMUM BASE THICKNESS OF EIGHT INCHES WITH THE WALL SECTION EXTENDING FOUR INCHES INTO THE BASE AND BE MANUFACTURED IN COMPLIANCE WITH ASTM C478.

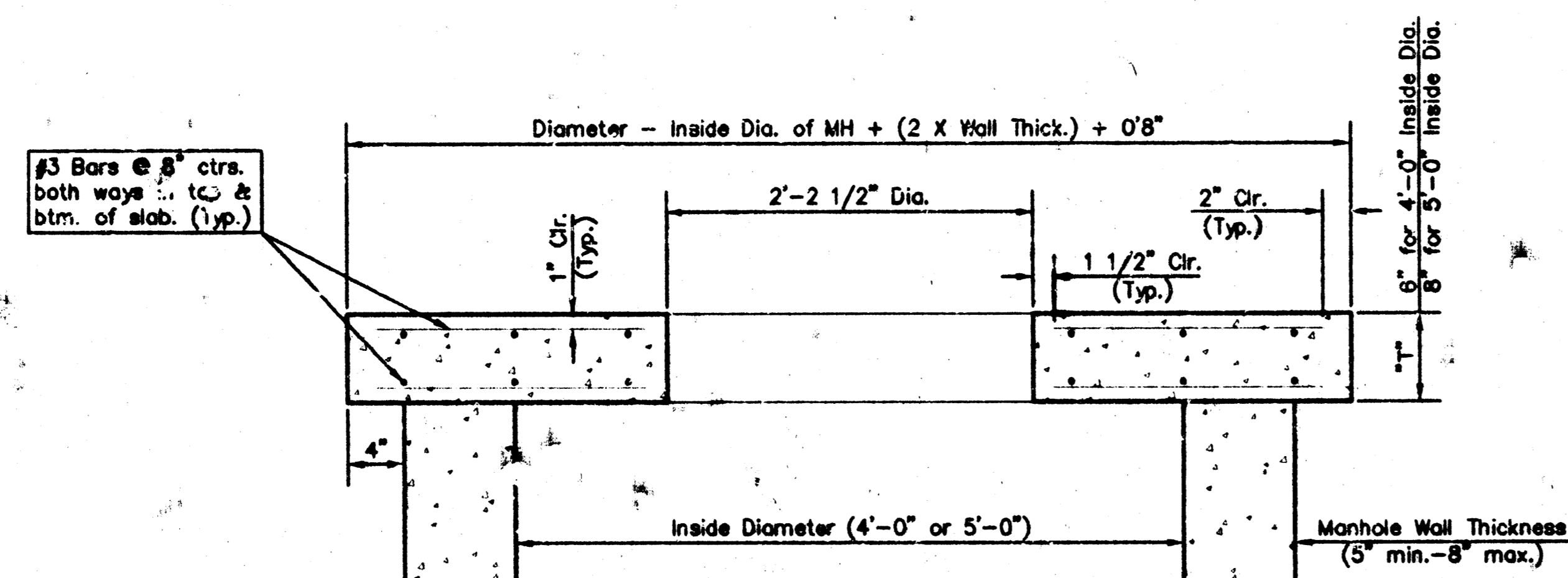
X:\APPS\DATA\PLANS\PHI Mod Nov 13 07:45:26 1996 Jim Parsons P&E Assoc.

Revised Manhole Base See Note 19

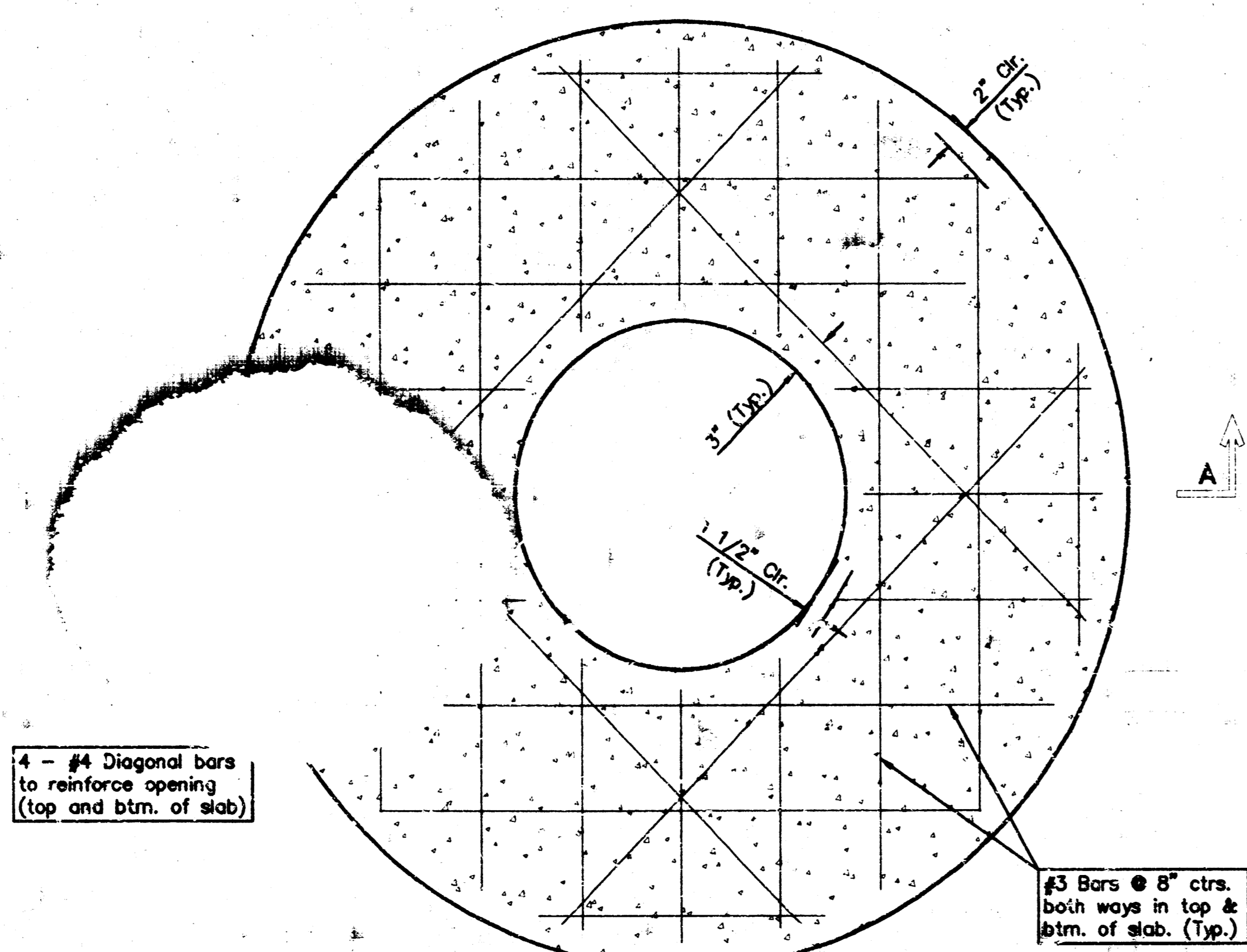
<p>THE CITY OF WICHITA</p> <p>CITY ENGINEER'S OFFICE CITY HALL - SEVENTH FLOOR 1001 SOUTH MAIN STREET WICHITA, KANSAS 67202 (316) 261-1174 FAX</p>	STANDARD TYPE 'P' MANHOLES	
	M. E. LINDEBAK P.E. - CITY ENGINEER	
	PROJECT NUMBER 468-82624	DRAWING CODE XXXXXX
	DATE MAR 96	SHEET 9 OF 12



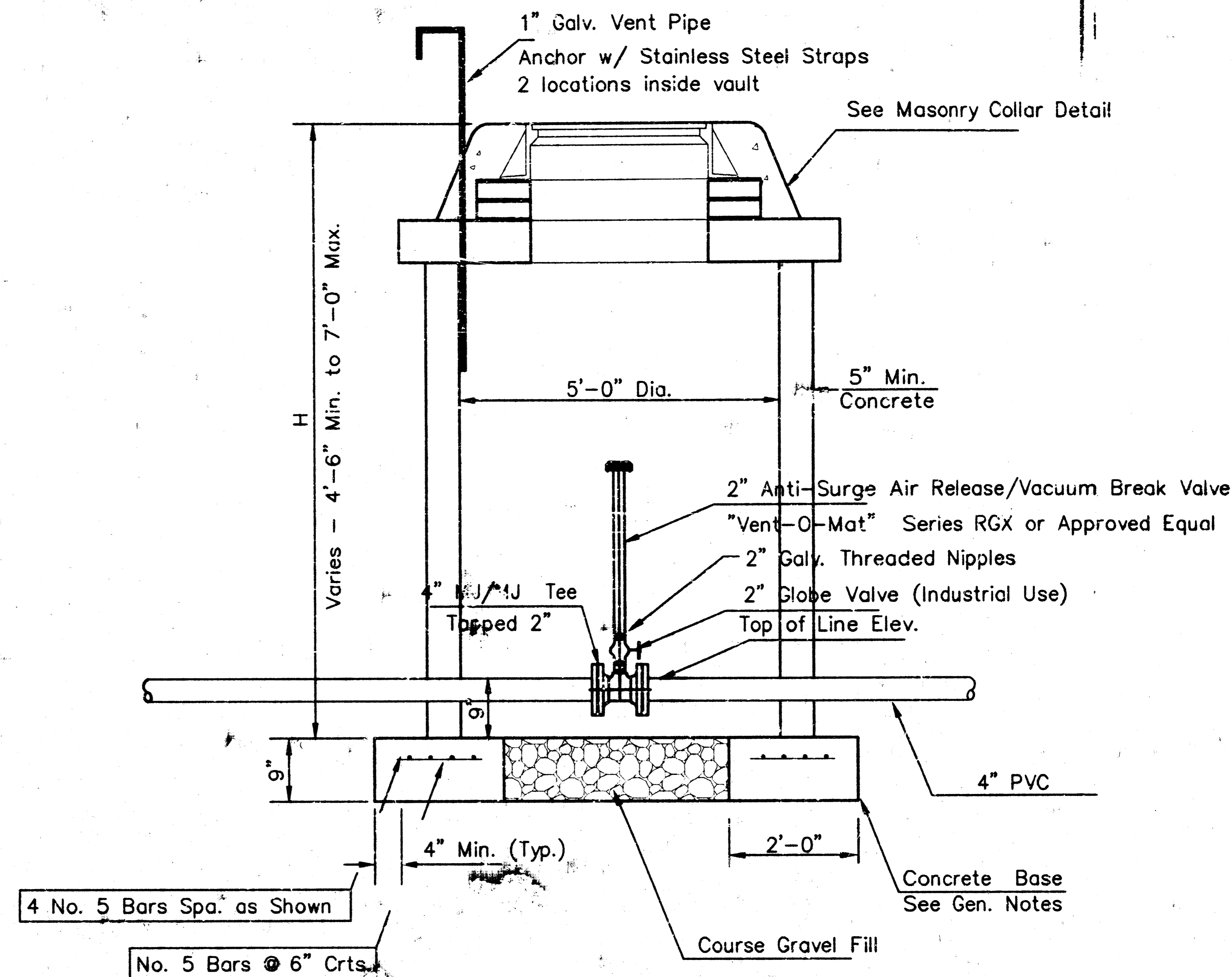
MASONRY COLLAR DETAIL



SECTION A-A
FLAT CONCRETE SLAB DETAILS



PLAN



AIR RELEASE/VACUUM BREAK DETAIL

GENERAL NOTES

- Mortar used in masonry construction shall contain 8 sacks of cement per cubic yard. Concrete used in manhole bases shall conform to the requirements of concrete for concrete pavement construction as specified in the city standard paving specifications using city concrete cement mix without air entraining admixture. Mortar shall be placed around the manhole ring as shown on the drawings when manholes are constructed in unpaved areas.
- The manhole base reinforcement shall be placed 6" above the bottom of the manhole base. All costs for furnishing and installing reinforcing steel shall be included in the unit price bid for the manhole.
- Pipes installed within the excavation made for the manhole shall be cradled with concrete to the limits of the manhole excavation. Cost of cradle within manhole excavation shall be subsidiary.
- Manhole cover castings and manhole frame castings shall conform to the requirements as indicated in the standard specifications and as shown in the standard detail drawings.
- All brick used in manhole construction shall meet Grade SW of ASTM C652 or C62-87.

VAULT SUMMARY			
STATION	TOP LINE ELEV.	TOP STRUCTURE ELEV.	H
6+14	1380.00	1385.25	6.0
23+05	1379.33	1383.70	5.1

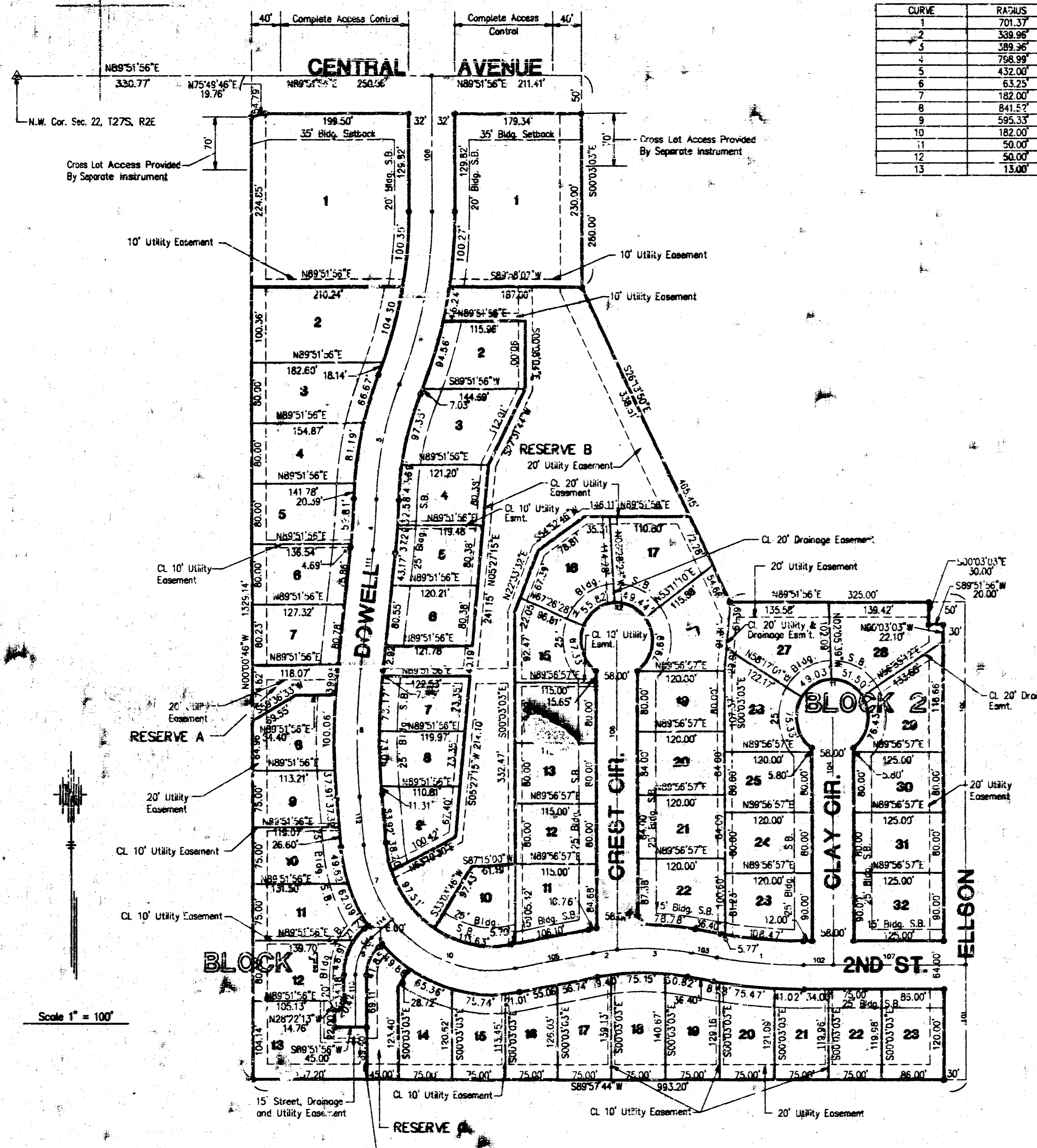
P.O.E. & ASSOCIATES OF KANSAS, INC.
 Consulting Engineers
 2940 E. Central Ave. Suite 200 ■ Wichita, KS 67208 ■ 316/965-4114

AIR RELEASE VACUUM BREAK DETAIL

PROJECT No. 488-82888
 INDEX No. 742841

CURVE	RADIUS	LENGTH	TANGENT	CHORD	BEARING	BELTA
1	701.37	119.71	50.00	119.38	S251°40'E	09°46'45"
2	339.96	34.22	17.12	34.20	S87°10'26"W	05°02'38"
3	339.96	102.37	51.49	102.08	N87°47'31"W	13°02'27"
4	796.99	67.15	33.61	67.17	N04°09'29"E	04°49'05"
5	432.00	156.65	79.20	155.79	N1°00'13"E	2°48'35"
6	63.25	56.02	30.00	34.21	S251°19'27"W	50°45'00"
7	182.00	103.63	55.99	107.02	S271°20'06"E	34°11'51"
8	841.57	171.40	86.00	171.11	S07°43'54"W	1°40'13"
9	595.35	225.44	119.28	223.91	N01°11'43"E	22°39'34"
10	182.00	183.89	107.29	184.85	S89°43'13"E	61°02'20"
11	50.00	252.28	35.60	252.02	S89°56'57"W	28°05'56"
12	50.00	252.28	35.60	252.02	S89°56'57"W	28°05'56"
13	13.00	20.42	13.00	10.38	N44°56'57"W	30°00'00"

LINE	DIRECTION	DISTANCE
100	S07°43'03"E	450.80
101	S07°03'03"E	152.01
102	N89°56'57"E	41.00
103	S89°56'57"E	38.40
104	S07°03'03"E	178.53
105	N79°39'37"E	111.30
106	S70°03'03"E	409.70
107	N89°56'57"E	84.00
108	N03°28'32"W	179.82
111	S06°54'00"W	156.64
112	N89°56'57"E	63.97
113	S07°03'03"E	69.14
114	S50°41'57"W	36.00



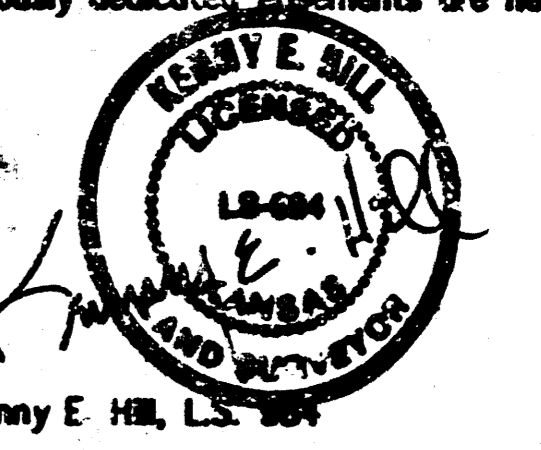
This is to certify that this instrument was filed for record in the Register of Deeds Office at 3:00 A.M.-P.M. on the 20th day of June 1996.

#1535757



Pot Kettler
Pot Kettler, Register of Deeds
Deputy
Peggy H. H. H. H. H.

STATE OF KANSAS, COUNTY OF SEDGWICK: SS.
I, Kenny E. Hill, being a duly licensed Land Surveyor in said County and State, do hereby certify that I have been in responsible charge of surveying and plotting "THE FOUNTAINS 2ND ADDITION" to Sedgwick County, Kansas, being a replat of "The Fountains" and being described as follows:
Commencing at the Northwest corner of the Northwest Quarter (NW1/4) of the Northwest Quarter (NW1/4) of Section 22, Township 27 South, Range 2 East of the Sixth Principal Meridian Sedgwick County, Kansas, thence bearing N 89° 51' 56" E along the North line of said Northwest Quarter (NW1/4) of the Northwest Quarter (NW1/4) a distance of 461.97 feet; thence bearing S 00° 03' 03" E a distance of 282.00 feet; thence bearing S 26° 13' 50" E a distance of 465.45 feet; thence bearing N 89° 51' 56" E a distance of 325.00 feet to a point on the East line of said Northwest Quarter (NW1/4) of the Northwest Quarter (NW1/4) of the Northwest Quarter (NW1/4) a distance of 632.81 feet to a point on the South line of said Northwest Quarter (NW1/4) of the Northwest Quarter (NW1/4); thence bearing S 89° 57' 44" W along said South line a distance of 993.20 feet; thence bearing N 00° 00' 48" W a distance of 129.14 feet to the point of beginning. Previously dedicated easements are hereby vacated by virtue of KSA 512-2.



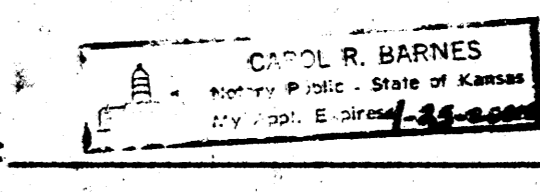
The accompanying plot is a true and correct exhibit of property surveyed. Dated this 17th day of May, 1996.

KNOW ALL MEN BY THESE PRESENTS:
That we, the undersigned, have caused the land described in the Surveyor's Certificate to be plotted into lots, blocks, streets and reserves. The streets are hereby dedicated to and for the use of the public. Easements are hereby granted as indicated for the construction and maintenance of drainage and utilities. Reserves A, B and C shall permit drainage, sidewalks, utilities, landscaping and playground equipment or recreational improvements. The reserves shall be owned and maintained by a property owners association, its successors and assigns. The minimum lot opening elevation for the homes built on lots adjacent to Reserve "A", "B", or "C" is 1570.5 M.S.L. Datum (1831 City of Wichita Datum). All egress rights of access to or from Central Avenue over and across the North line of Lot 1, Block 1, except the West 40 feet, and Lot 1 Block 2, except the East 40', are hereby granted to the City of Wichita.

Kipper Industries, Inc.
Donald L. Bates, President

Karl Solomon
Barbara J. Solomon

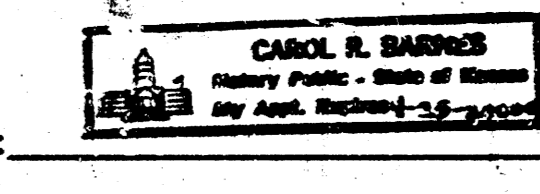
STATE OF KANSAS, COUNTY OF SEDGWICK: SS.
This instrument was acknowledged before me on this 17th day of May, 1996, by Karl Solomon and Barbara J. Solomon husband and wife.



My Appointment Expires:

Carol R. Barnes
Notary Public
Carol R. Barnes

STATE OF KANSAS, COUNTY OF SEDGWICK: SS.
This instrument was acknowledged before me on this 17th day of May, 1996, by Donald L. Bates, President of Kipper Industries, Inc.



My Appointment Expires:

Carol R. Barnes
Notary Public
Carol R. Barnes

This plot of THE FOUNTAINS 2ND ADDITION to Wichita, Kansas has been submitted to and approved by this WICHITA-SEDGWICK COUNTY METROPOLITAN AREA PLANNING COMMISSION, Wichita, Kansas.
Dated this 14th day of April, 1996.



WICHITA-SEDGWICK COUNTY METROPOLITAN AREA PLANNING COMMISSION
Susan Osborne-Hoopes, Chairman
Marvin S. Kroat, Secretary

This Plot approved and all dedications shown hereon, are accepted by the City Council of the City of Wichita, Kansas, this 15th day of JUNE, 1996.



Bob Knight, Mayor
Pat Burnett, Deputy City Clerk

Entered on transfer record this 20th day of June, 1996.

Sharon E. Conchert-Spoo, County Clerk
David W. Shultz, Chief Deputy

THE FOUNTAINS 2ND ADDITION

TO WICHITA, SEDGWICK COUNTY, KANSAS

V:\PDS\GCP\4565\PLAT P71 May 17 14:08:03 1996 Kelly Henderson - Poe and Associates, Inc.

