

SANITARY SEWER PLANS LATERAL 136 WIS PROJECT NO. 468 82693

INDEX CODE 743120

CITY OF WICHITA, KANSAS

MICHAEL E. LINDEBAK, CITY ENGINEER

GENERAL NOTES

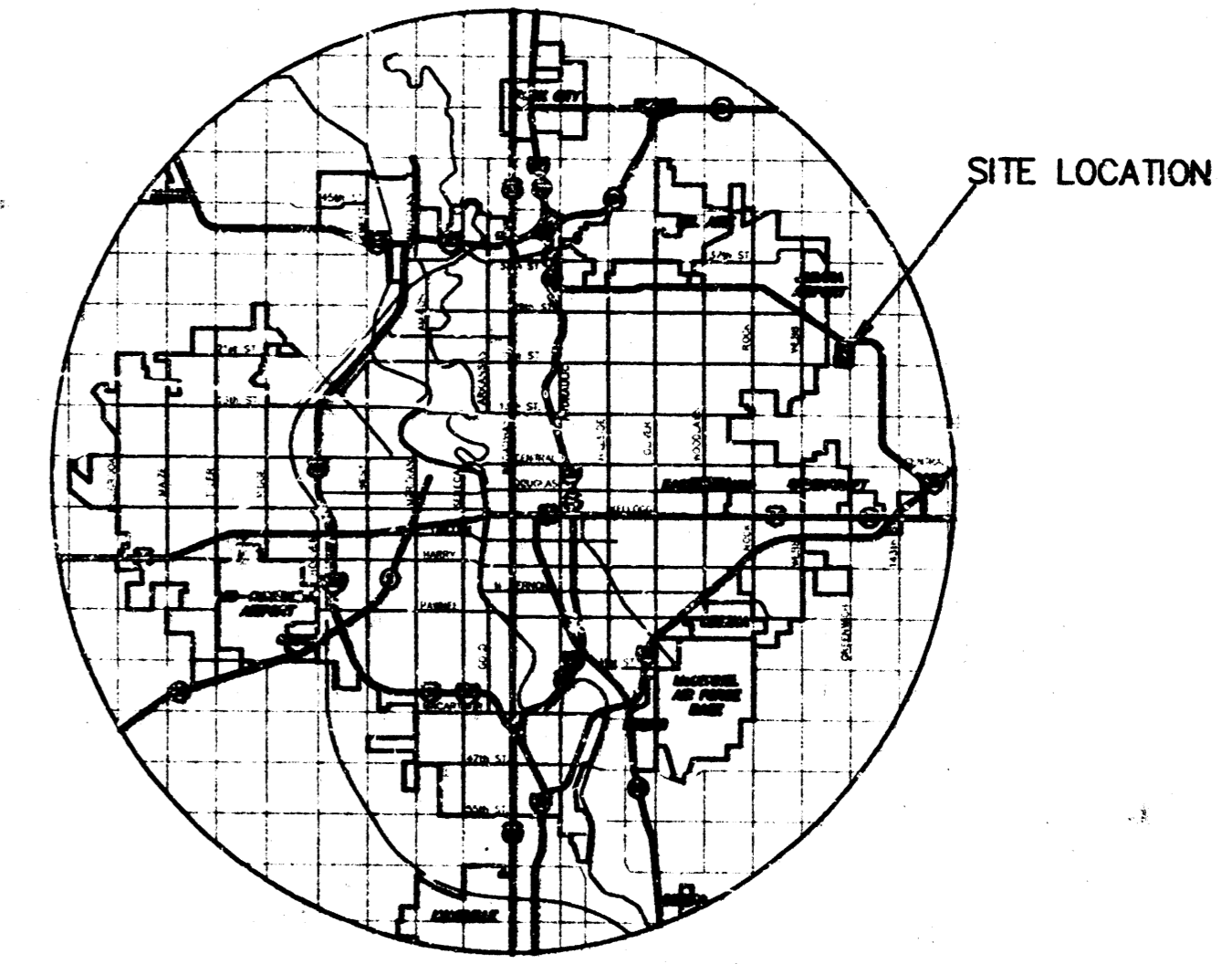
1. THE CONTRACTOR SHALL BE RESPONSIBLE FOR PRESERVING PROPERTY IRONS. THE CONTRACTOR SHALL RE-ESTABLISH ANY PROPERTY IRONS WHICH ARE DAMAGED OR DESTROYED BY HIS CONSTRUCTION OPERATIONS. SUCH IRONS SHALL BE RE-ESTABLISHED BY A LICENSED LAND SURVEYOR IN ACCORDANCE WITH STATE LAWS.
2. EXISTING UTILITIES AND THEIR LOCATIONS AS SHOWN ON THE PLANS REPRESENT THE BEST INFORMATION OBTAINABLE FOR DESIGN. LOCATION INFORMATION HAS BEEN OBTAINED FROM THE VARIOUS UTILITY COMPANIES AND IS EITHER FROM COMPANY RECORD DRAWINGS OR COMPANY PROVIDED FIELD LOCATIONS. THE PLAN LOCATIONS SHOWN ARE NOT GUARANTEED. ADDITIONAL EXISTING UTILITIES MAY ALSO BE ENCOUNTERED.
3. CONTRACTOR SHALL PROVIDE A MINIMUM ADVANCE NOTICE OF FORTY-EIGHT (48) HOURS TO UTILITY COMPANIES PRIOR TO STARTING ANY EXCAVATION AS FOLLOWS:

KANSAS ONE-CALL	1-800-344-7233
	or 667-2470 (LOCAL WICHITA)

THE CONTRACTOR MUST NOTIFY THE FOLLOWING IN CASE OF AN EMERGENCY:

SOUTHWESTERN BELL TELEPHONE COMPANY	1-800-734-7630
CABLEVISION	262-0661
K.G.M.E. (GAS & ELECTRIC)	383-8600
CITY OF WICHITA WATER & SEWER MAINTENANCE	268-4908

IF THE CONTRACTOR DAMAGES EITHER GAS OR ELECTRIC LINES, HE SHALL IMMEDIATELY INFORM EMERGENCY PERSONNEL THROUGH 911.
4. RUBBLE FROM THE REMOVAL OF MISCELLANEOUS STRUCTURES AND EXCESS EXCAVATION WHICH IS TO BE WASTED SHALL BE DISPOSED OF ON SITES TO BE PROVIDED BY THE CONTRACTOR. THESE SITES SHALL BE APPROVED BY THE ENGINEER AS TO SUITABILITY, APPEARANCE AND SITE LOCATION. LOCATIONS THAT, IN THE OPINION OF THE ENGINEER, WILL LEAVE AN UNSIGHTLY APPEARANCE WILL NOT BE APPROVED. ALL DISPOSAL SITES MUST BE APPROVED BY THE KANSAS DEPARTMENT OF HEALTH AND ENVIRONMENT. MATERIAL EITHER STOCKPILED OR DISPOSED OF IN A FLOOD PLAIN WILL REQUIRE A KANSAS STATE BOARD OF AGRICULTURE PERMIT. ANY MATERIAL DUMPED IN WATERS OF THE UNITED STATES OR WETLANDS IS SUBJECT TO U.S. CORPS OF ENGINEERS PERMITTING REGULATIONS. ANY MATERIAL BURIED OR STOCKPILED BEYOND APPROVED CONSTRUCTION LIMITS WILL REQUIRE ADDITIONAL ARCHAEOLOGICAL INVESTIGATIONS UNLESS BURIED IN A PREVIOUSLY APPROVED BORROW LOCATION.
5. COST OF EXCAVATION, HAULING, AND DUMPING OF EXCESS EXCAVATION SHALL BE SUBSIDIARY TO THE PROJECT.
6. A PORTION OF EXCESS EXCAVATED MATERIAL SHALL BE MOUNDING AROUND MANHOLES WHICH EXTEND MORE THAN ONE (1) FOOT ABOVE THE EXISTING GROUND. SUCH MOUNDS SHALL BE CONSTRUCTED WITH A SIX (6) FOOT DIAMETER FLAT TOP WITH 4 TO 1 SIDE SLOPES DOWN TO THE ORIGINAL GROUND. THE ELEVATION OF THE FLAT TOP OF THE MOUND SHALL BE 0.4 FOOT BELOW THE TOP OF THE MANHOLE.
7. ALL STUBS AND PLUGGED PIPES SHALL BE LOCATED WITH GREEN PLASTIC TAPE.
8. PRIOR TO LAYING SEWER LINES USING EXISTING STUBS IN EXISTING MANHOLES THE CONTRACTOR SHALL EXPOSE AND VERIFY THE ELEVATION, GRADE AND ALIGNMENT OF EXISTING STUBS AND NOTIFY THE ENGINEER OF ANY DEVIATION FROM THE PLAN. WHERE CONNECTION TO AN EXISTING MANHOLE THAT DOES NOT HAVE AN EXISTING STUB OR THE STUB IS UNUSABLE DUE TO ELEVATION GRADE OR ALIGNMENT, THE CONTRACTOR SHALL RESHAPE THE EXISTING MANHOLE INVERT TO PROVIDE SMOOTH FLOW. THE COST OF RESHAPING EXISTING MANHOLE INVERTS IS INCIDENTAL TO THE PROJECT.
9. TREES AND SHRUBS IN PUBLIC RIGHT-OF-WAY WHICH ARE IN DIRECT CONFLICT WITH PROPOSED NEW CONSTRUCTION SHALL BE REMOVED BY THE CONTRACTOR WITH THE ENGINEER'S APPROVAL. TREES AND SHRUBS WHICH ARE NOT IN DIRECT CONFLICT WITH PROPOSED NEW CONSTRUCTION SHALL BE SAVED AND PROTECTED FROM DAMAGE.
10. ALL DISTURBED AREAS SHALL BE SEEDED WITH RYE GRASS AT A RATE OF 200 LBS./ ACRE WITHIN 10 DAYS OF CONSTRUCTION. COST SHALL BE SUBSIDIARY TO PROJECT.
11. CONTRACTOR SHALL INSTALL SEDIMENT BARRIERS AS INDICATED. THE CONTRACTOR SHALL BE RESPONSIBLE FOR CONTROLLING ALL EROSION CAUSED BY SANITARY SEWER CONSTRUCTION.



LOCATION MAP

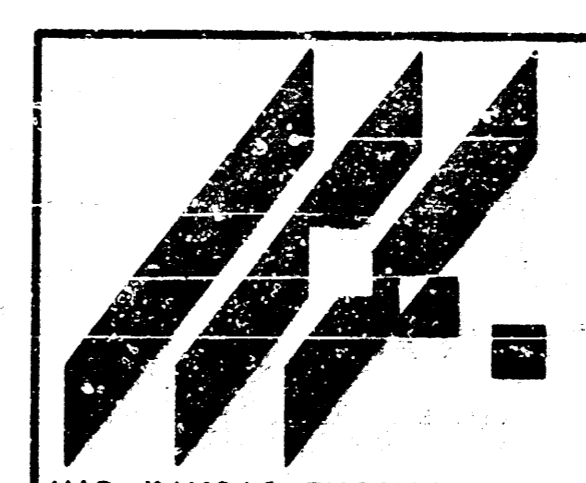
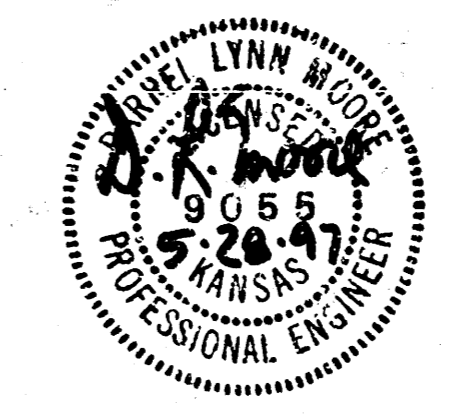
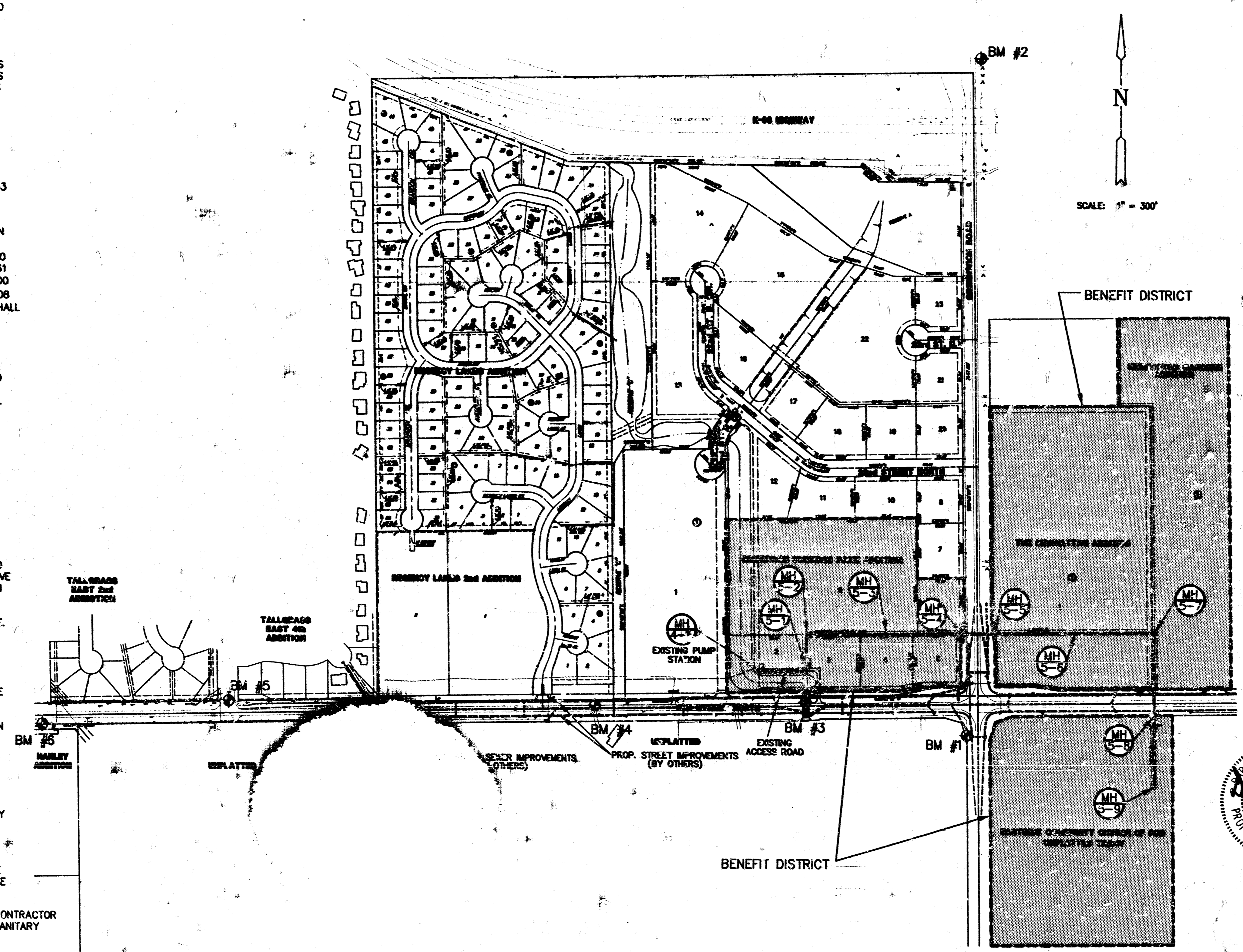
INDEX TO DRAWINGS

SHEET NO.	DESCRIPTION
1	TITLE SHEET
2	DETAILS
3	DETAILS
4	LINE 5
5	LINE 5
6	LINE 5
7	FINAL PLAN

BENCHMARKS

- BM #1 GREENWICH AND 21st. N. COW, 41' SOUTH AND 58' WEST OF IRON CTR. LINE BOTH. 17' SW OF ASPHALT, 14.2' EAST OF FACE P.P., 17' WEST OF FACE P.P.. ELEV. = 173.98
- BM #2 STEP SPIKE IN WEST SIDE P.P., 6th POLE NORTH OF K-96 ON EAST SIDE OF GREENWICH RD. ELEV. = 184.45
- BM #3 "□" CUT C/L HEADWALL 3-8x4.5 BOXES, NORTH SIDE OF 21st STREET NORTH AT DITCH. ELEV. = 175.15
- BM #4 R.R. SPIKE, NORTH EDGE OF ASPHALT AT C/L OF DRIVEWAY, SOUTH SIDE OF HOUSE #10715. ELEV. = 183.87
- BM #5 "□" CUT TOP OF CURB AT NOSE OF MEDIAN CURB AT 21st STREET NORTH AND CLUBHOUSE DRIVE. ELEV. = 211.09
- BM #6 R.R. SPIKE NORTH SIDE OF POWER POLE. ELEV. = 202.89

*Booked
N-293
2/13/98
R. Loonis*

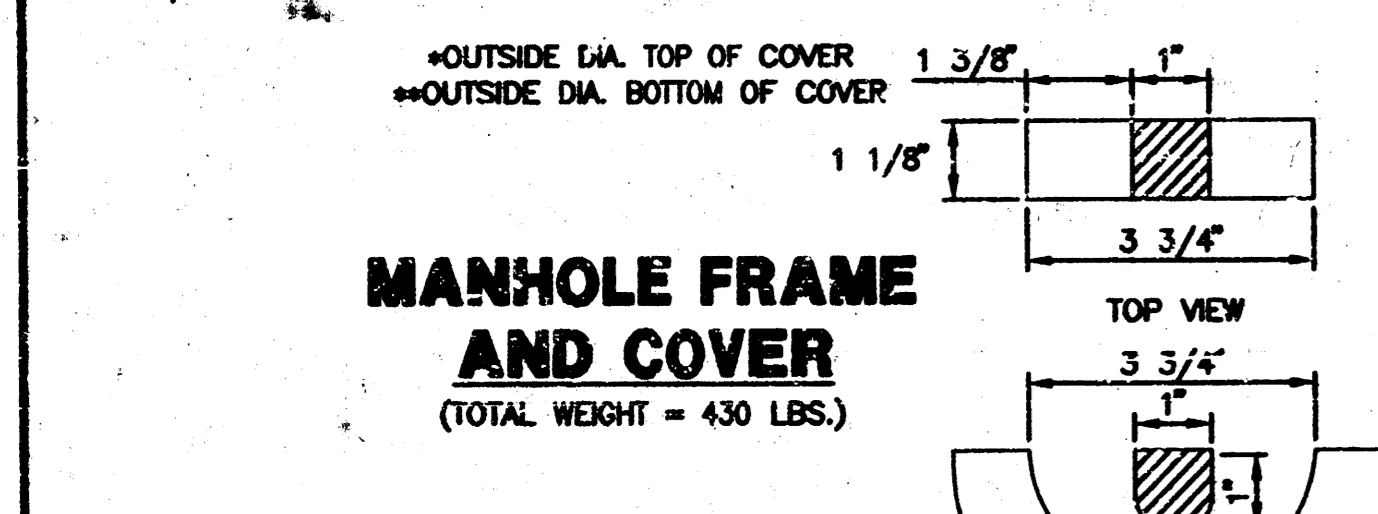
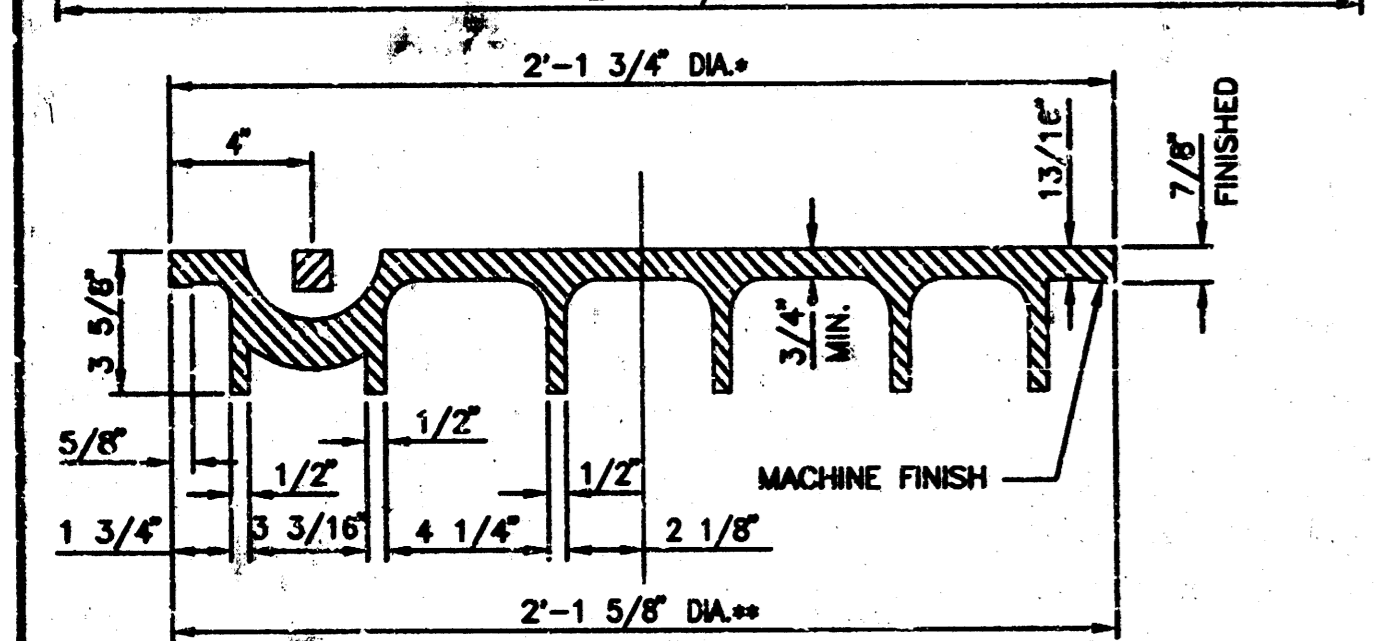
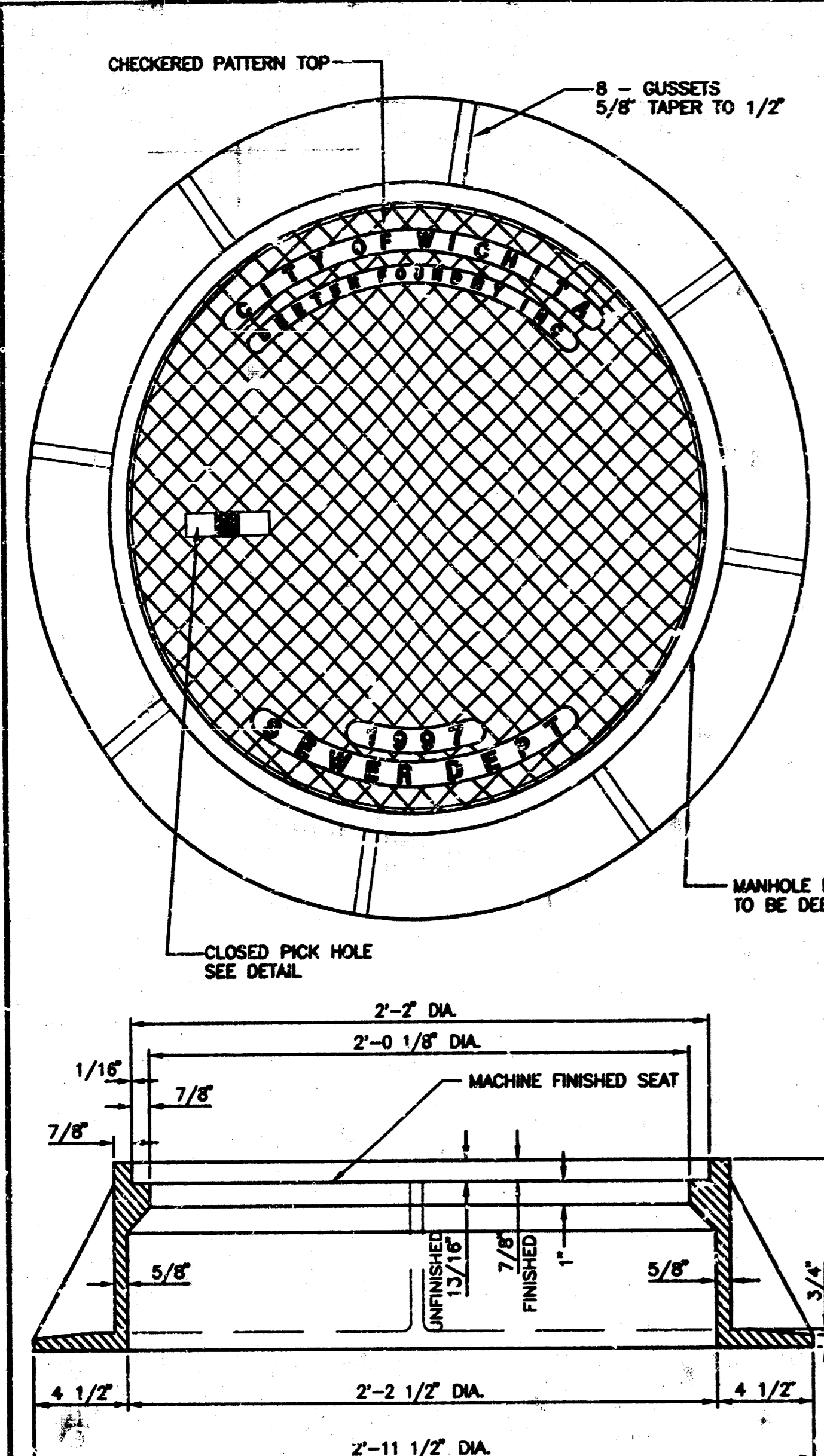


LATERAL 136 WIS PROJECT NAME		
TITLE SHEET SHEET TITLE		
D.L.M. DESIGN BY	R.S.B. CHECKED BY	MKEC CHECKED BY
5/27/97 DATE	98066-BT JOB NO.	1 / 7 SHEET OF

MID-KANSAS ENGINEERING CONSULTANTS, INC.
411 N. WEBB ROAD
WICHITA, KS. 67206
316-684-9600

SEWER APPURTENANCES DETAILS

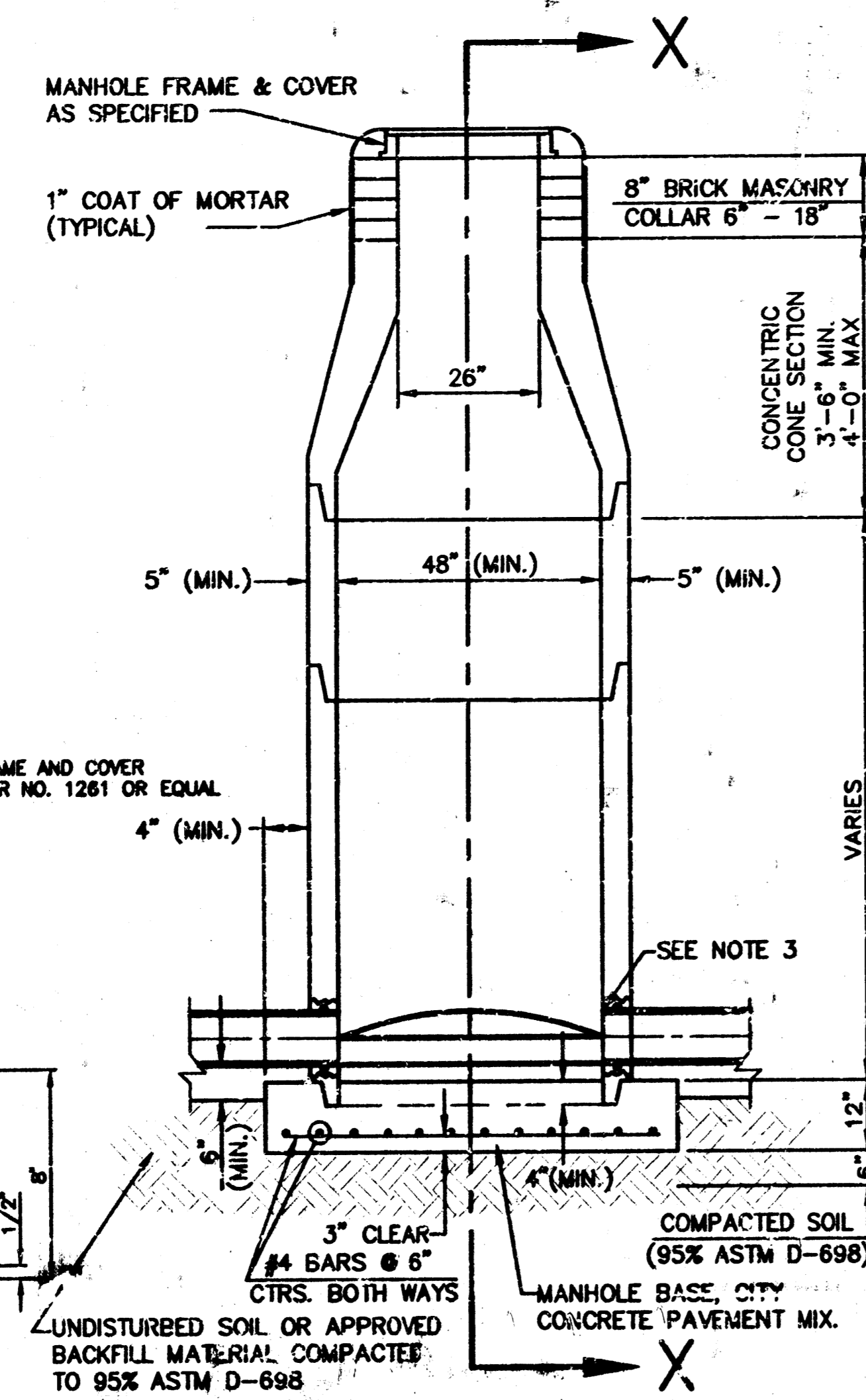
ADOPTED AS STANDARD DESIGN BY CITY OF WICHITA



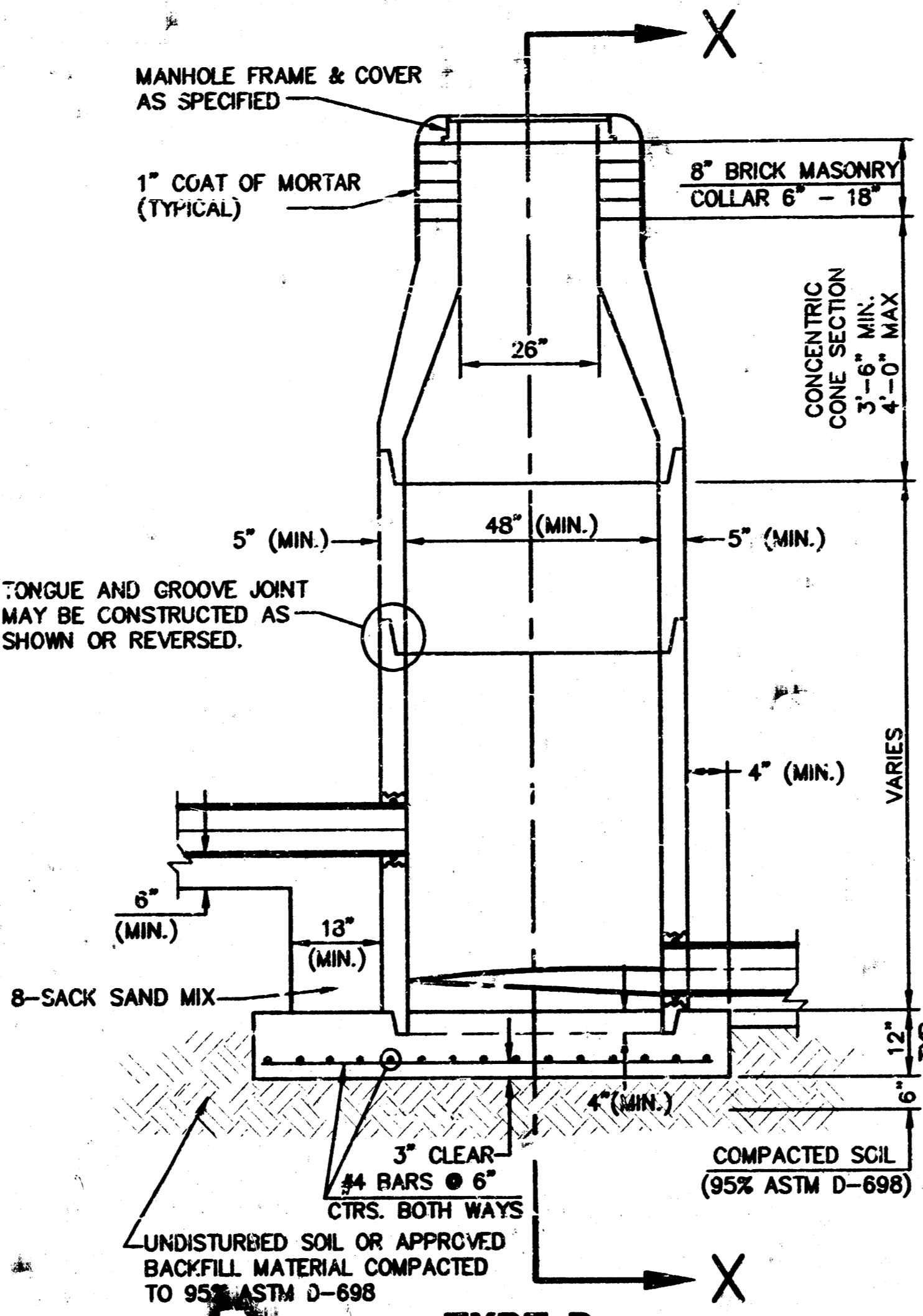
MANHOLE FRAME AND COVER
(TOTAL WEIGHT = 430 LBS.)

MANHOLE FRAME AND COVER NOTES

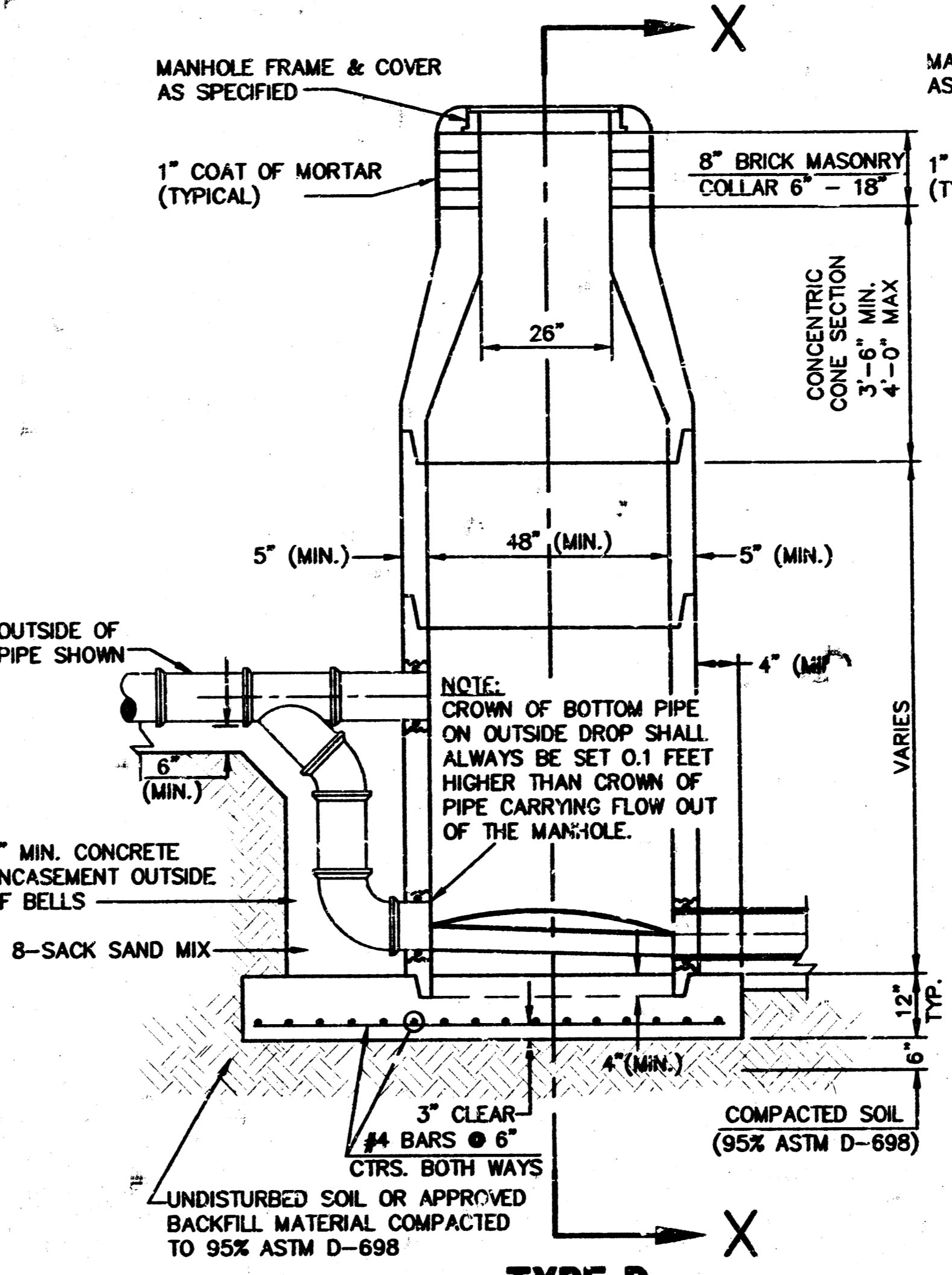
- CAST IRON MANHOLE FRAME AND COVER SHALL CONFORM TO ASTM A-48, CLASS 30, OR BETTER.
- THE FRAMES AND COVERS SHALL BE OF A NONROCKING TYPE OR WITH MACHINED BEARING SURFACES SO FITTING PARTS WILL NOT RATTLE OR ROCK UNDER TRAFFIC.
- MANHOLE CASTINGS SHALL BE DEETER FOUNDRY INC. NO. 1281 OR APPROVED EQUAL UNLESS OTHERWISE SPECIFIED IN THE SPECIAL CONDITIONS. (MINIMUM WT. = 430 LBS.) ALL MANHOLE CASTINGS, REGARDLESS OF TYPE, SHALL BE CONSIDERED SUBSIDIARY TO THE UNIT PRICES BID FOR THE VARIOUS MANHOLE TYPES.
- GRIND ALL SURFACES SMOOTH, CLEAN THOROUGHLY, THEN APPLY SHOP COAT OF ASPHALT BASE PAINT.
- THE MANUFACTURER SHALL SUBMIT SHOP DRAWINGS TO THE ENGINEER FOR APPROVAL PRIOR TO MANUFACTURE. THE ENGINEER SHALL RETAIN THE RIGHT TO REJECT CASTINGS NOT CONFORMING TO THE SPECIFICATIONS OR THE APPROVED SHOP DRAWINGS.
- WHERE SELF-SEALING MANHOLE FRAMES ARE SPECIFIED ON THE PLANS, THE MANHOLE FRAME SHALL BE FURNISHED WITH AN APPROVED "O" RING GASKET GROoved INTO THE BEARING SURFACE OF THE MANHOLE FRAME (PER DETAIL). THE "O" RING GASKETS SHALL NOT BE INSTALLED IN THE MANHOLE FRAME UNTIL AFTER FINAL INSPECTION AND ACCEPTANCE OF THE PROJECT BY THE ENGINEER. THE CONTRACTOR SHALL SUPPLY TO THE OWNER ONE (1) REPLACEMENT "O" RING GASKET FOR EACH SELF-SEALING MANHOLE SPECIFIED.



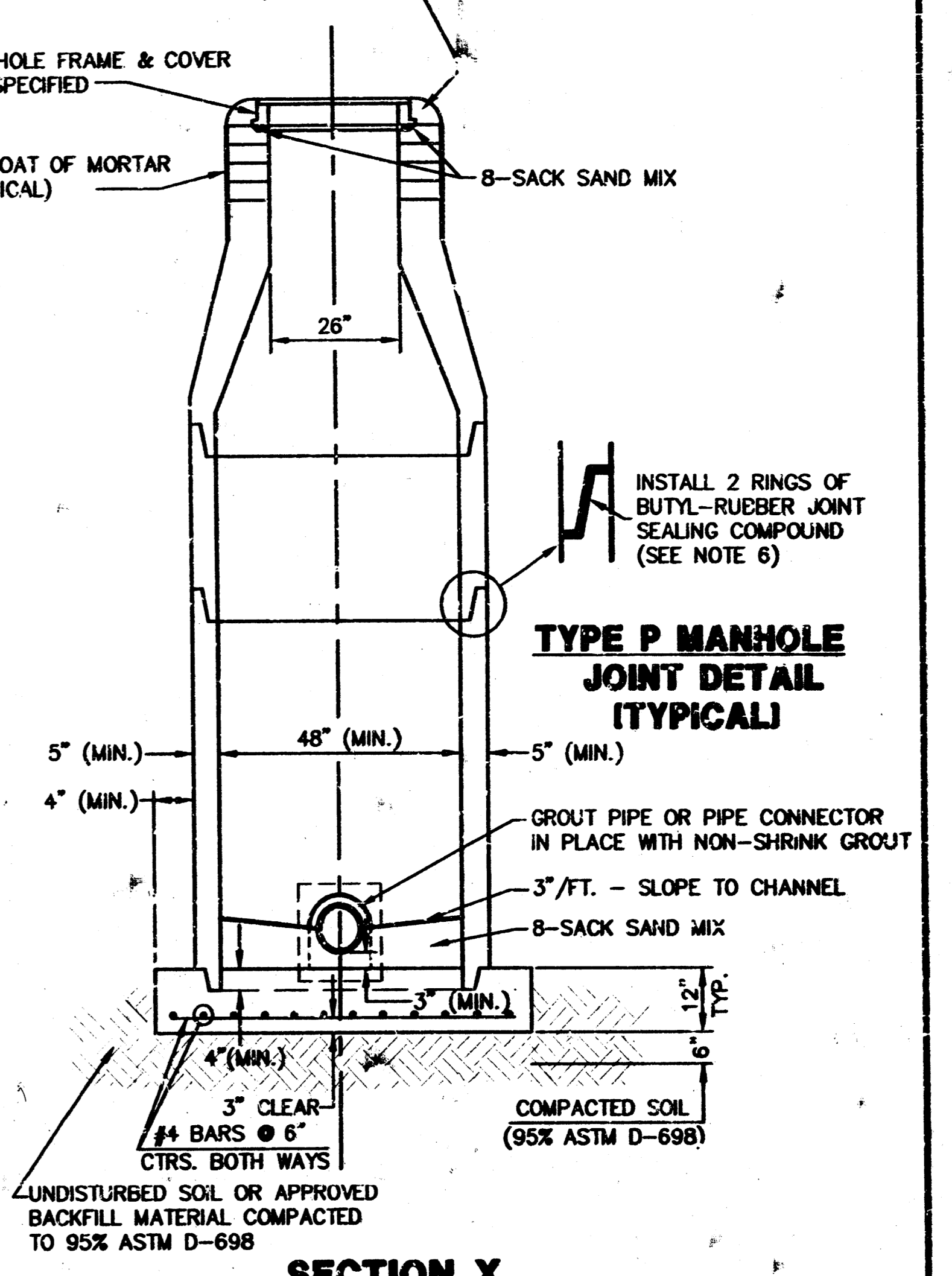
TYPE P STANDARD MANHOLE



TYPE P INSIDE DROP MANHOLE



TYPE P OUTSIDE DROP MANHOLE

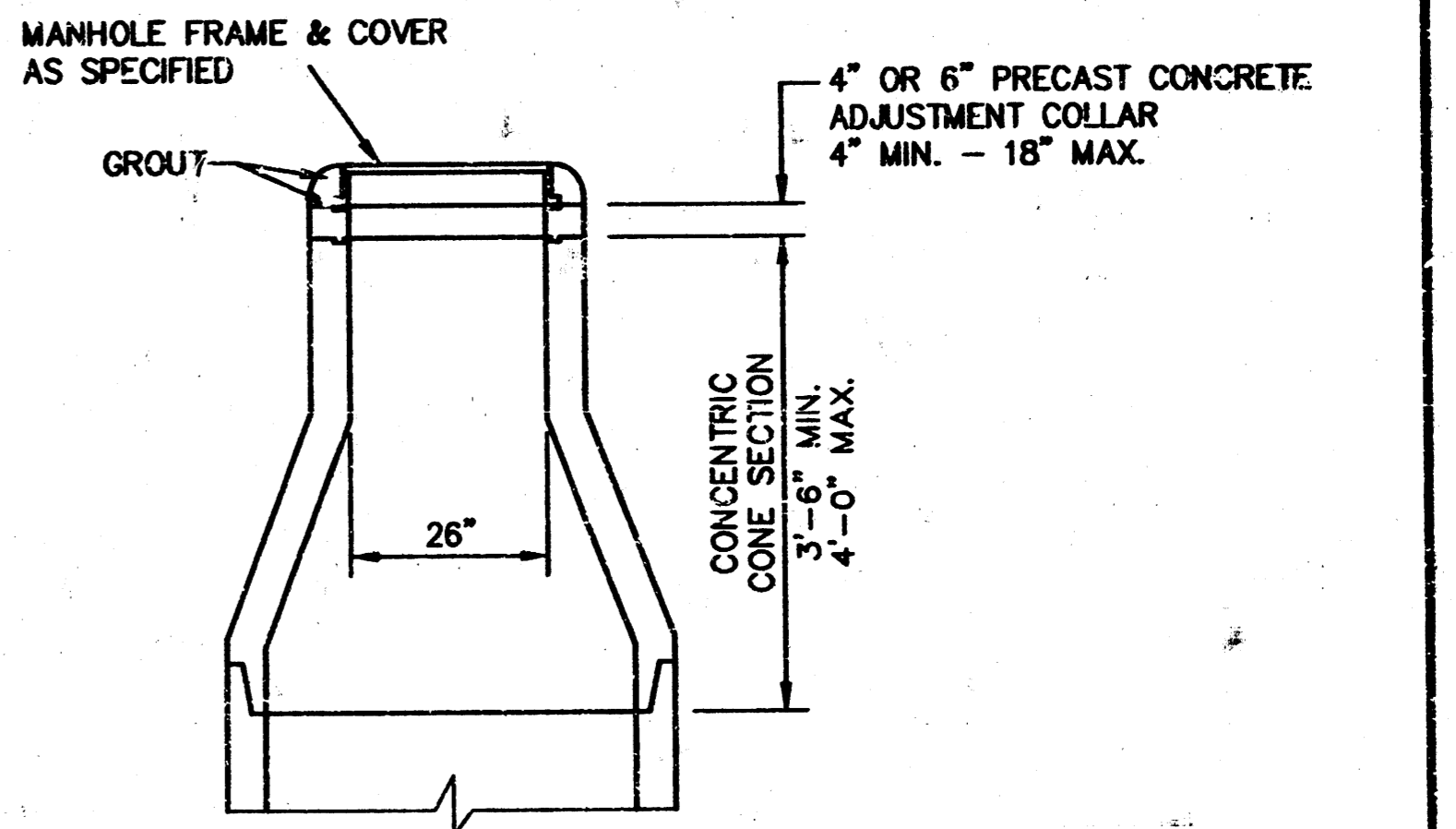


TYPE P MANHOLE JOINT DETAIL (TYPICAL)

SECTION X (TYPICAL)

GENERAL NOTES - PRECAST MANHOLE NOTES

- ALL PRECAST CONCRETE MANHOLE SECTIONS SHALL CONFORM TO THE LATEST REVISIONS OF A.S.I.M. C478 AS MODIFIED BY THE SPECIFICATIONS.
- NON-SHRINK GROUT SHALL BE NON-METALLIC TYPE.
- APPROVED FLEXIBLE WATERSTOP GASKETS SHALL BE INSTALLED TO JOIN THE SEWER TO THE MANHOLE WALL WHEN A.B.S. COMPOSITE PIPE OR P.V.C. PIPE IS USED. FOR OTHER TYPES OF PIPE THE SEWER SHALL BE GROUTED IN PLACE WITH NON-SHRINK GROUT. THE SEWER PIPE SHALL BE SUPPORTED WITH CONCRETE ENCASEMENT A MINIMUM OF 3 FEET FROM THE MANHOLE WALL AND TO THE FIRST JOINT FOR V.C.P. SUCH THAT THE JOINT REMAINS FLEXIBLE.
- ALL INSIDE SURFACES OF THE CONCRETE MANHOLE WHICH WOULD BE EXPOSED TO SEWER GAS SHALL BE COATED WITH 2 COATS TNEG SERIES 56 HI-BUILD EPOXYLINE, DRY THICKNESS OF 8 MILS (MIN.).
- EXTERIOR MANHOLE WALLS SHALL BE COATED WITH 1 COAT MOBILARMA 633 BITUMINUS COATING.
- JOINT SEALING COMPOUND SHALL BE KENT SEAL NO. 2 OR APPROVED EQUAL.
- PRECAST MANHOLES SHALL BE SET AT LEAST 4 INCHES INTO THE MANHOLE BASE.
- TOP OF MANHOLE FLOOR SLAB SHALL BE AT LEAST 3 INCHES BELOW THE FLOW LINE OF THE OUTLET PIPE TO INSURE SUFFICIENT MINIMUM THICKNESS OF SHAPED INVERT.
- LIFTING HOLES SHALL BE FILLED WITH NON-SHRINK GROUT AND THE INTERIOR SURFACE COATED AS SPECIFIED.
- MORTAR USED IN MASONRY CONSTRUCTION SHALL CONTAIN 8 SACKS OF CEMENT PER CUBIC YARD. CONCRETE USED IN MANHOLE BASES SHALL CONFORM TO THE REQUIREMENTS OF CONCRETE FOR CONCRETE PAVEMENT CONSTRUCTION AS SPECIFIED IN THE CITY STANDARD PAVING SPECIFICATIONS USING CITY CONCRETE PAVEMENT MIX WITHOUT AIR ENTRAINING ADMIXTURE. MORTAR SHALL BE PLACED AROUND THE MANHOLE RING AS SHOWN ON THE DRAWINGS WHEN MANHOLES ARE CONSTRUCTED IN UNPAVED AREAS. MANHOLES CONSTRUCTED WHERE PIPE SIZES ARE SMALLER THAN 24" SHALL HAVE AN INSIDE DIAMETER OF 4". MANHOLES CONSTRUCTED WHERE PIPE SIZES ARE 24" OR LARGER SHALL HAVE AN INSIDE DIAMETER OF 5". COMPLETED MANHOLES SHALL BE WITHOUT LEAKS AND WATER TIGHT.
- REINFORCING STEEL SHALL BE INSTALLED IN THE MANHOLE BASES AND SHALL CONSIST OF NO. 4 BARS PLACED ON 6" CENTERS IN BOTH DIRECTIONS. THE MANHOLE BASE REINFORCEMENT SHALL BE PLACED AT LEAST 3" ABOVE THE BOTTOM OF THE MANHOLE BASE. ALL COSTS OF FINISHING AND INSTALLING REINFORCING STEEL SHALL BE INCLUDED IN THE UNIT PRICE BID FOR THE MANHOLE.
- OPENINGS SHALL BE CUT INTO THE MANHOLE WALL WHEN OUTSIDE DROPS ARE CONSTRUCTED ON EXISTING MANHOLES. SUCH OPENINGS CUT INTO EXISTING MANHOLES SHALL BE AS SMALL AS PRACTICAL TO FACILITATE INSTALLING AND GROUTING THE NEW PIPE IN PLACE. WATERSTOP GASKETS SHALL BE USED WITH P.V.C. AND A.B.S. COMPOSITE PIPE. THE NEW PIPE SHALL BE GROUTED INTO THE OPENING USING AN APPROVED NONSHRINK GROUT FOR THE FULL MANHOLE WALL THICKNESS. THE EXTERIOR OF THE COMPLETED CONNECTION SHALL BE SEALED WITH AN APPROVED BITUMINOUS COATING SUCH THAT THE CONNECTION WILL BE WATER TIGHT. FLOOR OF MANHOLE SHALL BE MODIFIED TO FORM NEW FLOW CHANNEL FOR THE NEW CONNECTION AS INDICATED BY THE DRAWING. THIS WORK, INCLUDING MODIFICATION OF MANHOLE FLOOR, SHALL BE PAID FOR AT THE UNIT PRICE BID FOR OUTSIDE DROP STACK CONSTRUCTED ON EXISTING MANHOLE.
- THE FLOORS OF ALL MANHOLES SHALL BE SHAPED WITH FLOW CHANNELS SUCH THAT THE MANHOLES WILL BE SELF CLEANING AND FREE OF AREAS WHERE SOLIDS COULD BE DEPOSITED AS SEWAGE FLOWS THROUGH THE MANHOLE FROM ALL INLET PIPES TO THE OUTLET PIPE. FLOW CHANNELS SHALL BE FORMED TO MATCH THE BOTTOM HALVES OF THE INFLOWING PIPES AND THE OUTFLOWING PIPE AS SHOWN BY THE DRAWINGS EXCEPT FOR INSIDE DROP MANHOLES. FLOW CHANNELS FOR INSIDE DROP MANHOLES SHALL BE CONSTRUCTED AS INDICATED BY THE DRAWING. MANHOLE FLOORS SHALL HAVE SLOPES OF 3 INCHES PER FOOT IN THE AREAS OUTSIDE OF THE FLOW CHANNELS SLOPED TOWARD THE FLOW CHANNELS. PIPES LAID THROUGH MANHOLES SHALL HAVE THE TOP HALF REMOVED TO NEAT LINES FOR THE FULL INSIDE DIAMETER OF THE MANHOLE. MANHOLE FLOORS SHALL THEN BE SHAPED AROUND THE BOTTOM HALF OF THE PIPE WHICH FORMS THE FLOW CHANNEL.
- PIPES INSTALLED WITHIN THE EXCAVATION MADE FOR THE MANHOLE SHALL BE CRADLED WITH CONCRETE TO THE LIMITS OF THE MANHOLE EXCAVATION. WHEN CLAY PIPE IS USED, THE CRADLE SHALL EXTEND TO THE FIRST JOINT OUTSIDE THE MANHOLE. THE CRADLE SHALL BE TERMINATED AT THE CLAY PIPE JOINT IN A MANNER WHICH WILL MAINTAIN THE FLEXIBILITY OF THE JOINT. COST OF CRADLE WITHIN MANHOLE EXCAVATION OR TO CLAY PIPE JOINTS ADJACENT TO MANHOLE SHALL BE INCLUDED IN THE UNIT PRICE BID FOR AN EXISTING MANHOLE.
- MANHOLE COVER CASTINGS AND MANHOLE FRAME CASTINGS SHALL CONFORM TO THE REQUIREMENTS AS INDICATED IN THE STANDARD SPECIFICATIONS AND AS SHOWN IN THE STANDARD DETAIL DRAWING.
- THE VERTICAL DROP IN INSIDE DROP MANHOLES SHALL NOT EXCEED 2' FOR INFLOWING PIPES. THE CROWNS OF INFLOWING PIPES SHALL NEVER BE SET LOWER THAN THE CROWN OF THE OUTFLOWING PIPE.
- STANDARD MANHOLES AND STANDARD INSIDE DROP MANHOLES SHALL BE BID AS STANDARD MANHOLES FOR THE TYPE AND DIAMETER INDICATED. OUTSIDE DROP MANHOLES SHALL BE BID AS STANDARD OUTSIDE DROP MANHOLES FOR THE TYPE AND DIAMETER INDICATED. ALL MANHOLE DIAMETERS WILL BE 4' UNLESS INDICATED OTHERWISE.
- A BRICK MASONRY COLLAR SHALL BE INSTALLED BETWEEN THE CAST IRON FRAME AND THE CONCENTRIC CONE. THE COLLAR WILL HAVE 8" WALLS AND A VERTICAL HEIGHT OF 6" MINIMUM AND 18" MAXIMUM. A 1" COAT OF MORTAR WILL BE PLASTERED ON THE OUTSIDE OF THE COLLAR.



ALTERNATE CONSTRUCTION IN UNPAVED AREAS

REVISED: 6-12-86

27

MANHOLE DETAILS

CITY OF WICHITA, KANSAS

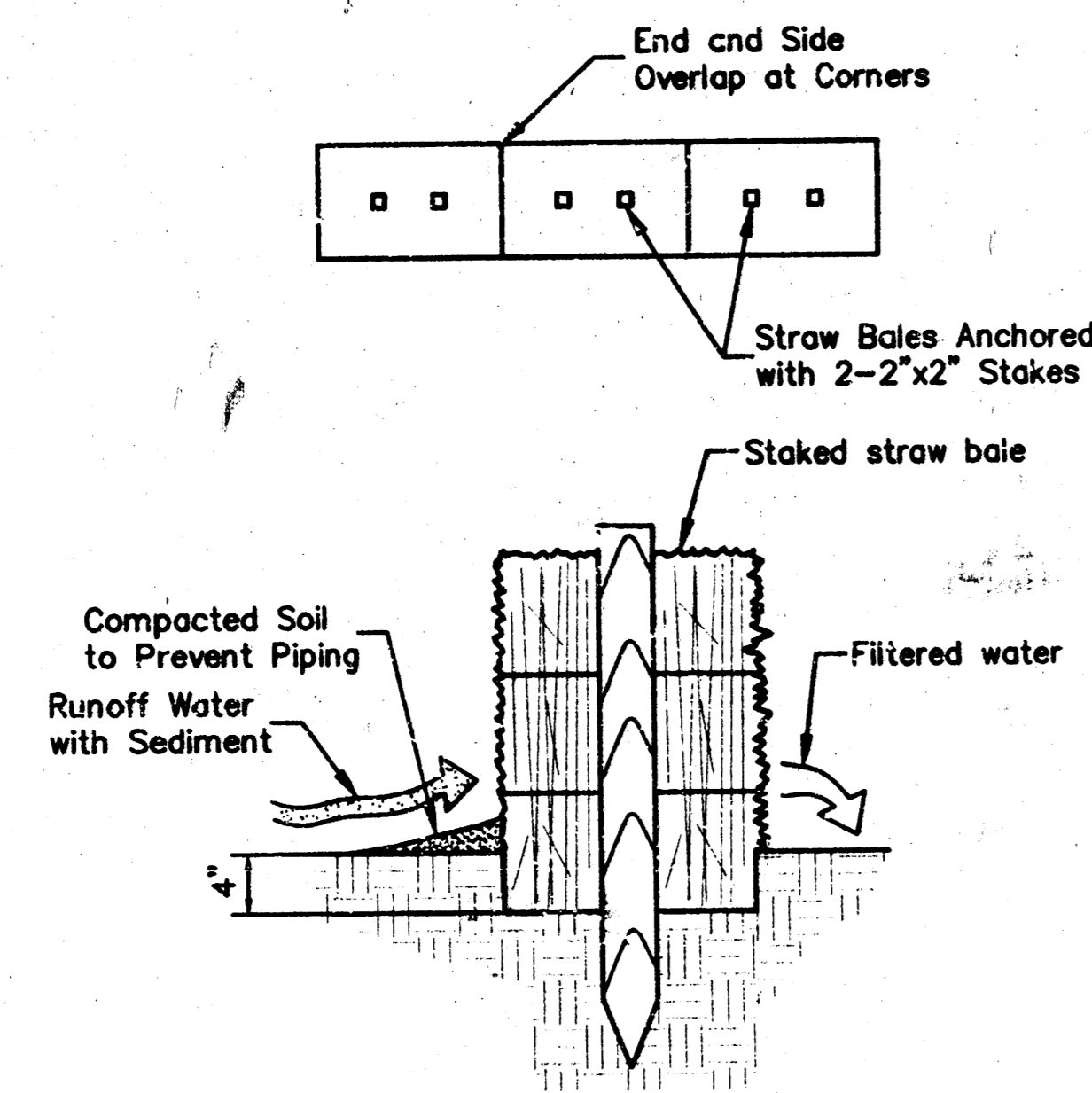
Design C.O.W.	Checked by	Checked by	
Drawn by	Date	Date APRIL 1997	Job No. 96066B02

SEWER SERVICE TABLE							
NO.	TYPE	LOCATION				FOR INFORMATION ONLY	
		LOT NO.	BLOCK NO.	LINE NO.	STATION/DIRECTION	APPROXIMATE LENGTH 4" PIPE	
1	15"x4" Tee Saddle	2	1	5	1+05 Lt.	14'	4'
2	15"x4" Tee Saddle	9	1	5	4+10 Lt.	13'	14'
3	15"x4" Tee Saddle	3	1	5	4+60 Rt.	13'	4'
4	15"x4" Tee Saddle	4	1	5	6+90 Rt.	13'	4'
5	15"x4" Tee Saddle	5	1	5	9+15 Rt.	12'	4'
6	15"x4" Tee Saddle	6	1	5	9+20 Lt.	12'	14'
7							
8							
9							
10							

NOTES:

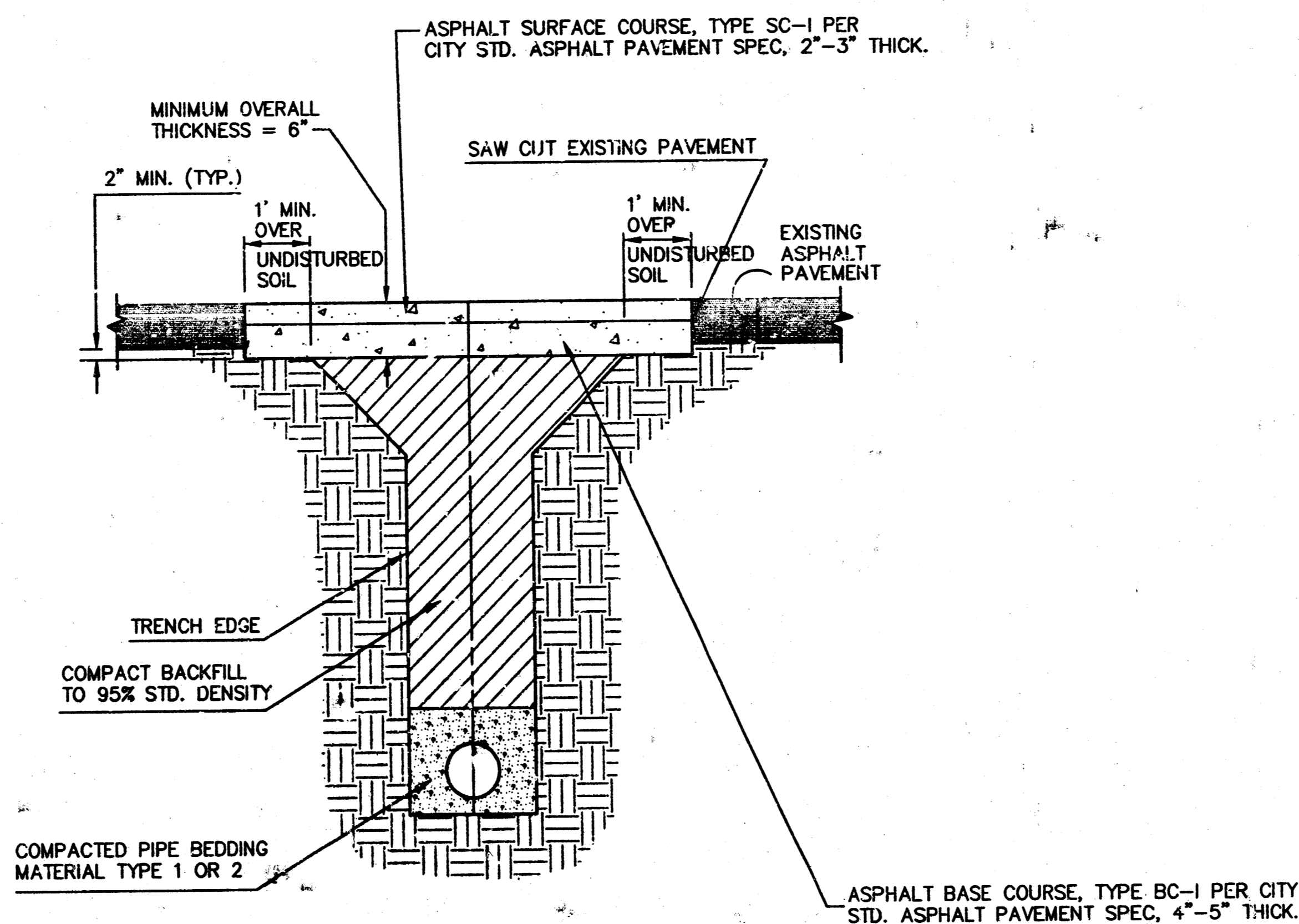
- Vertical Riser Pipe shall be extended to 2' minimum above ground water elevation and 4' maximum below proposed ground elevation.

**SEWER SERVICE TABLE
(VERTICAL RISER PIPE)**

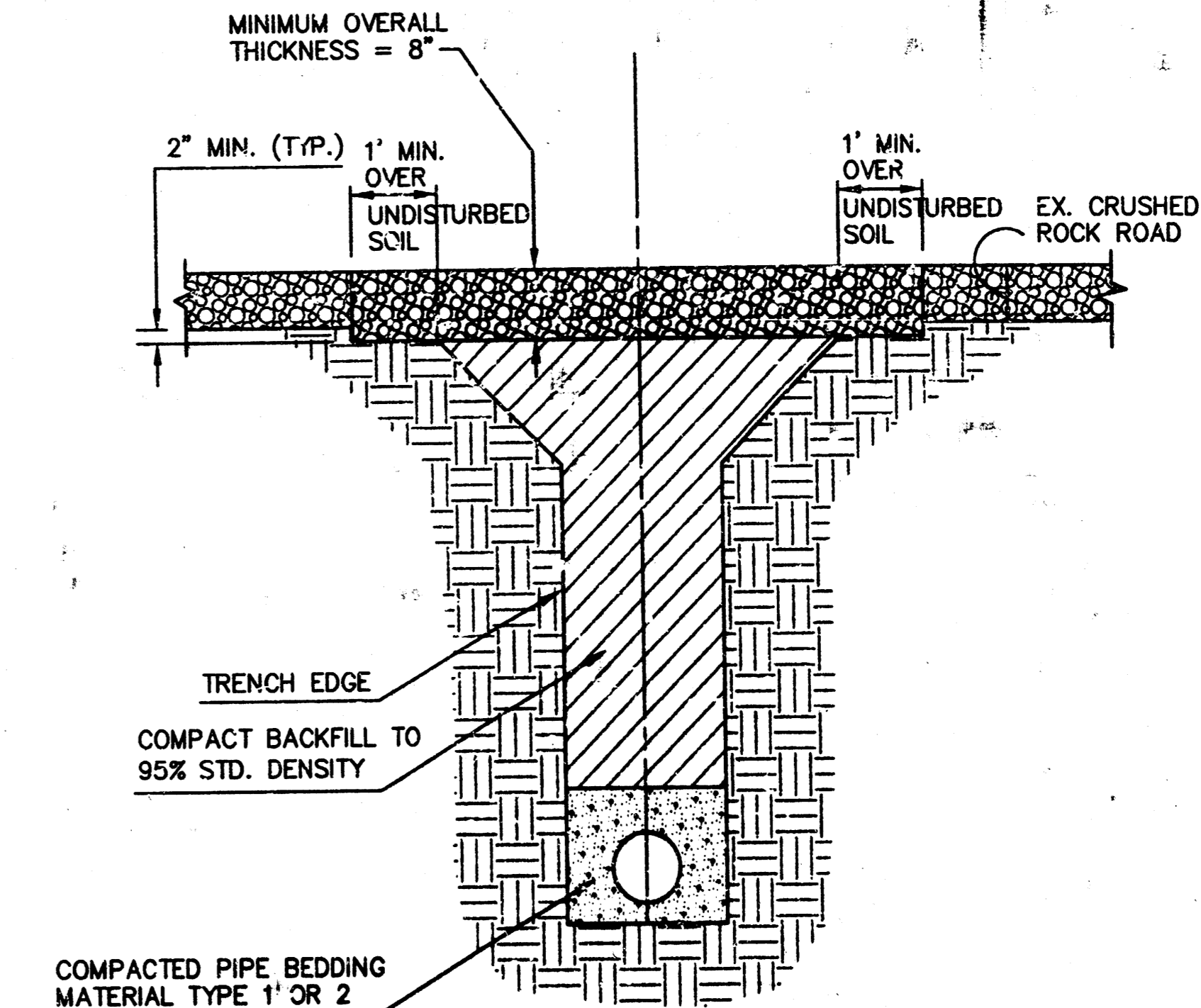


STRAW BALE SEDIMENT BARRIER

Note: Wedge loose straw between bales to prevent water from flowing between bales.



**ASPHALT PAVEMENT
REPLACEMENT DETAIL**



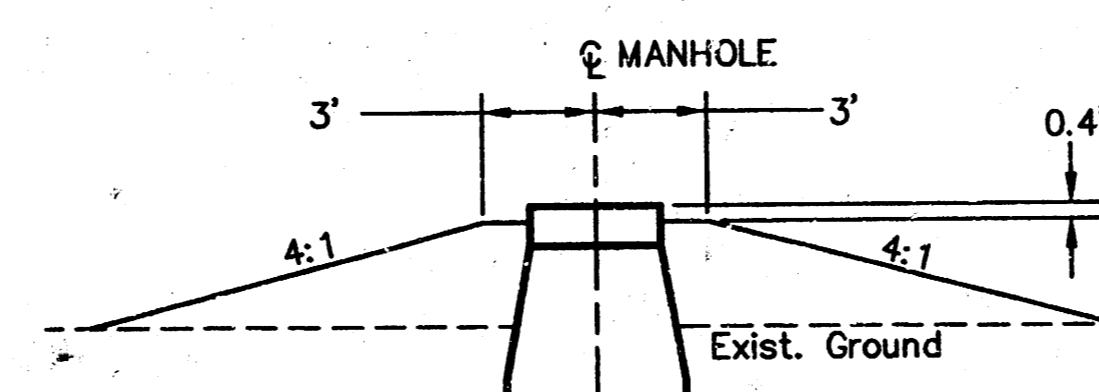
**ACCESS ROAD
REPAIR DETAIL**

**CRUSHED ROCK
GRADATION REQUIREMENTS**

PERCENT OF AGGREGATE RETAINED	
2-1/2"	0
3/4"	20-60
#4	50-80
#40	80-94
#200	90-98

ROCK QUALITY SHALL CONFORM TO THE REQUIREMENTS SPECIFIED BY THE KDOT 1990 EDITION STANDARD SPECIFICATION SUBSECTION 1102 FOR DURABILITY CLASS 1.

**MANHOLE MOUNDING
DETAIL**



SEE GENERAL NOTE #6

	LATERAL 136 W15		
	PROJECT NAME		
	MISC. DETAILS		
	SHEET TITLE		
MID-KANSAS ENGINEERING CONSULTANTS, INC. 411 N WEBB ROAD WICHITA, KS. 67206 316-684-9600	M.K.E.C. DESIGN BY.	R.S.B. DRAWN BY.	M.K.E.C. CHECKED BY.
5/27/97 DATE	6068B04 JOB NO.	3 / 7 SHEET/OF	

BENCHMARK #2:
CITY CUT CV. HEADWALL 3-8x4.5 BOXES,
NORTH SIDE OF 21st ST. N. AT DITCH
ELEV. = 173.12

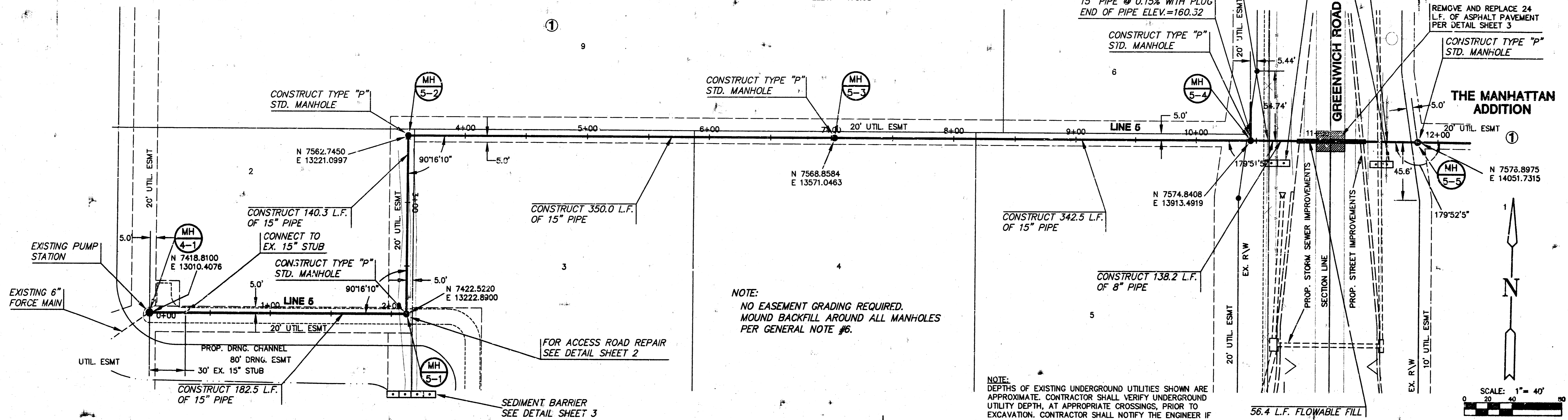
NOTE:
UTILITY RELOCATION TO BE COORDINATED
WITH UTILITY COMPANIES.

GREENWICH BUSINESS PARK ADDITION

BENCHMARK #1:
GREENWICH AND 21st ST. N.
COW, 41' SOUTH AND 38' WEST OF IRON CTR.
LINE BOTH 17' SW OF ASPHALT, 14.2' EAST
OF FACE 9.9, 17' WEST OF FACE P.P..
ELEV. = 173.98

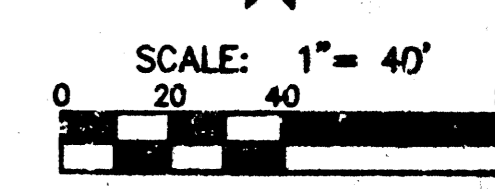
REMOVE AND REPLACE EXIST.
FENCE, AS REQUIRED, WITH
LIKE KIND

**LATERAL 136 WIS
PROJ. # 468-82693**

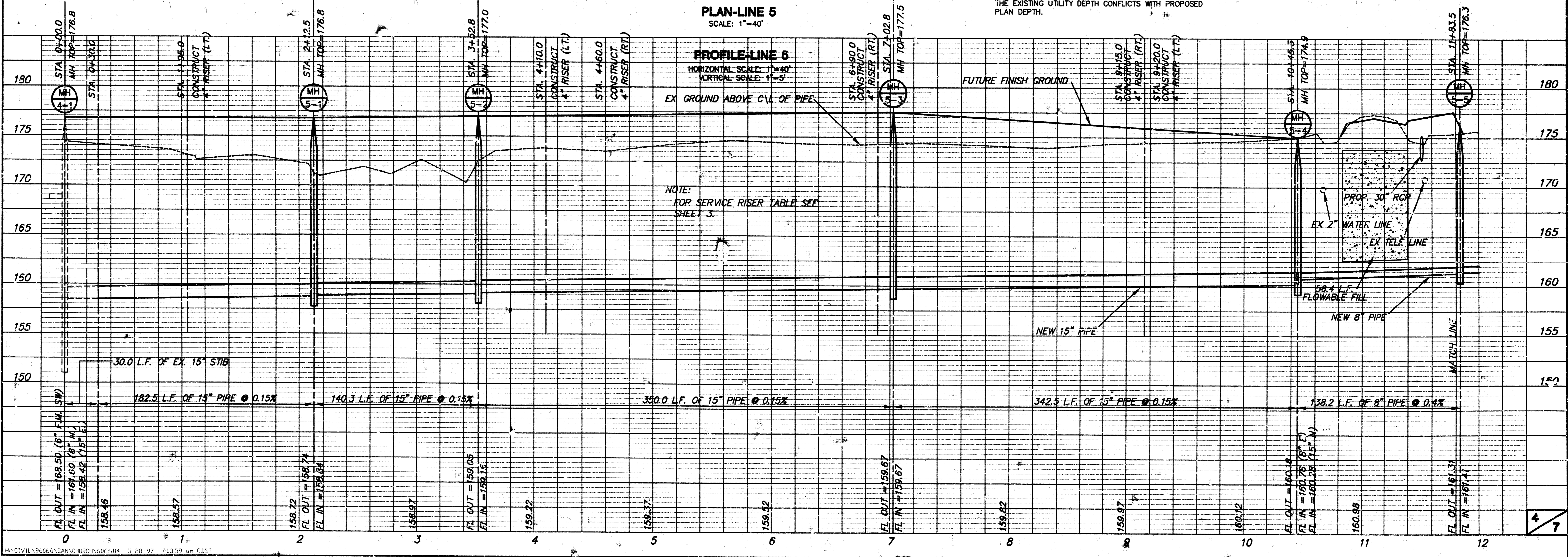


NOTE:
NO EASEMENT GRADING REQUIRED.
MOUND BACKFILL AROUND ALL MANHOLES
PER GENERAL NOTE #6.

NOTE:
DEPTHS OF EXISTING UNDERGROUND UTILITIES SHOWN ARE
APPROXIMATE. CONTRACTOR SHALL VERIFY UNDERGROUND
UTILITY DEPTH, AT APPROPRIATE CROSSINGS, PRIOR TO
EXCAVATION. CONTRACTOR SHALL NOTIFY THE ENGINEER IF
THE EXISTING UTILITY DEPTH CONFLICTS WITH PROPOSED
PLAN DEPTH.



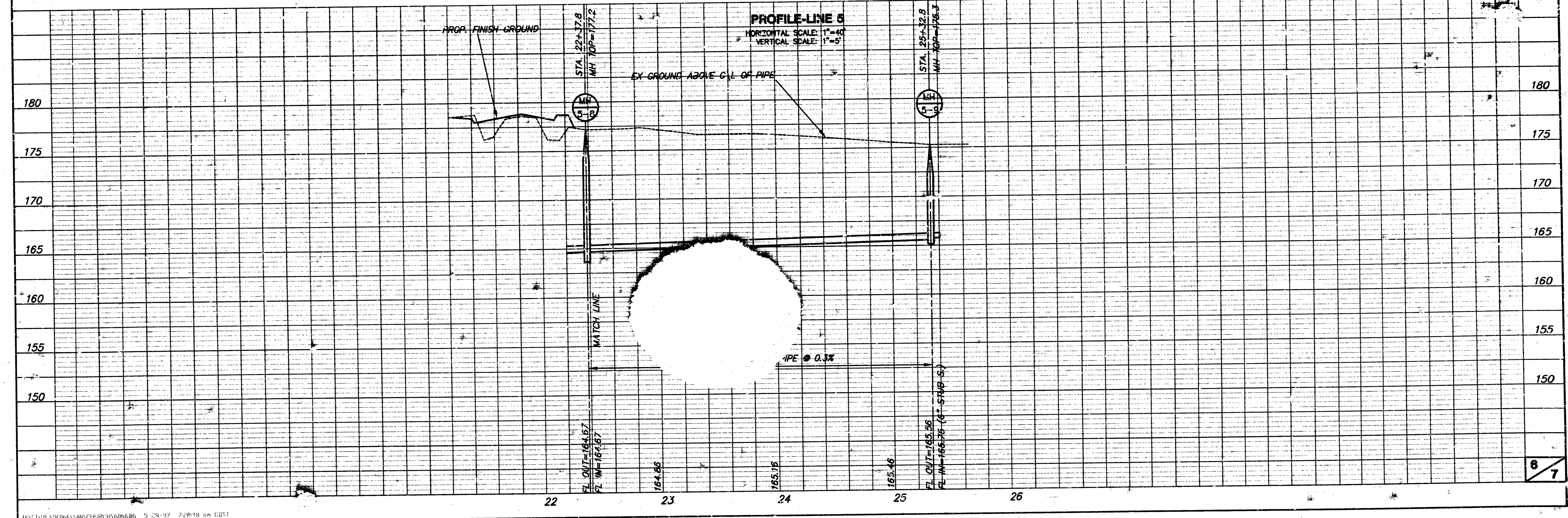
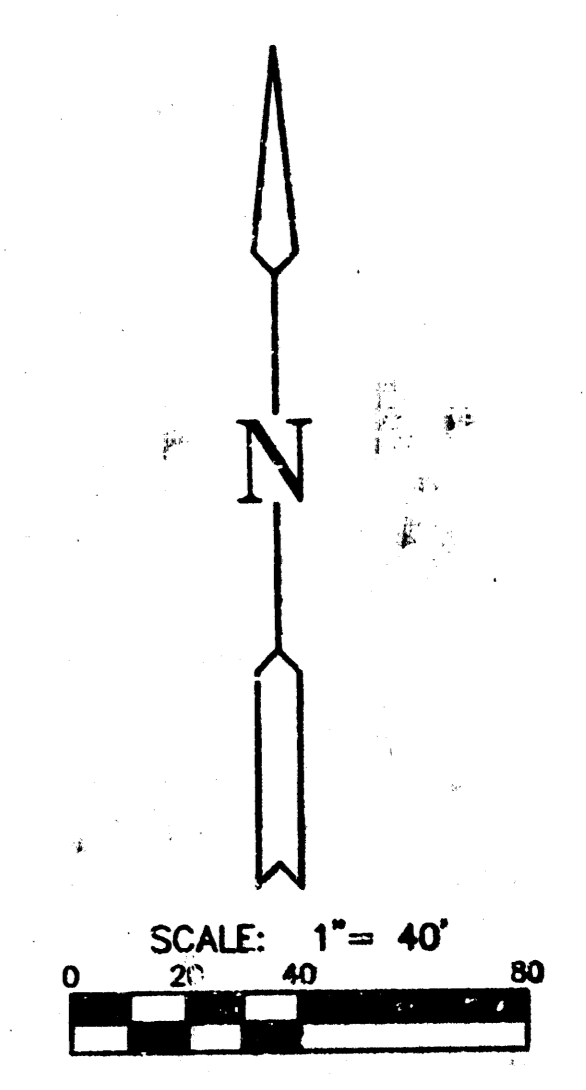
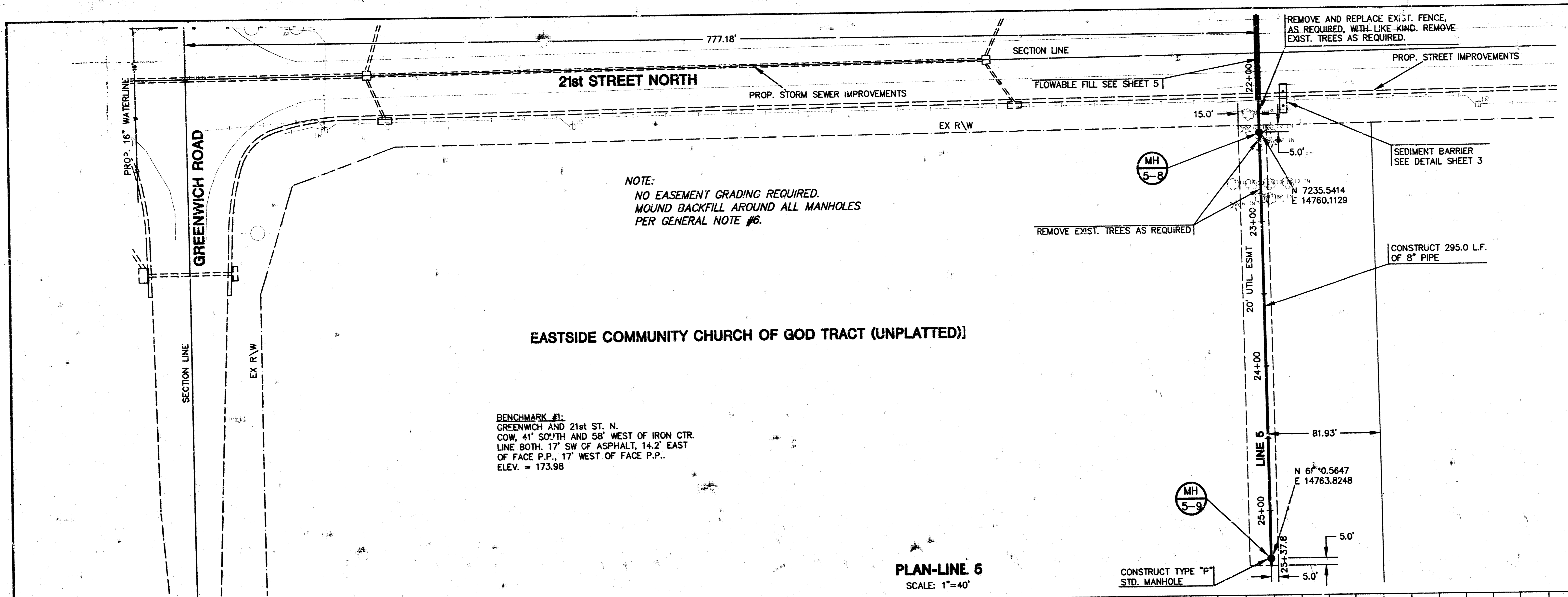
PLAN-LINE 5
SCALE: 1"=40'



PROFILE-LINE 5
HORIZONTAL SCALE: 1"=40'
VERTICAL SCALE: 1"=5'

NOTE:
TOP SERVICE RISER TABLE SEE
SHEET 3.

LATERAL 136 WIS
PROJ. # 468-82693

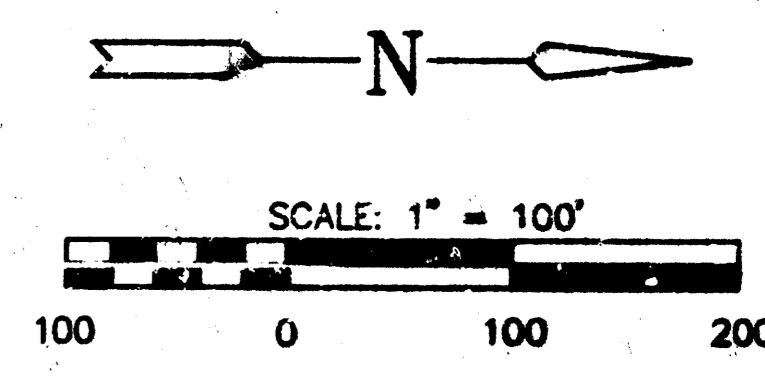


H:\CIVIL\96066\SATVONCHACHA66686.dwg 23 07:31:37 1307
 H:\CIVIL\96066\SATVONCHACHA66686.dwg 5/29/97 7:29:58 am GDS1

FINAL PLAT GREENWICH BUSINESS PARK ADDITION

AN ADDITION TO WICHITA, SEDGWICK COUNTY, KANSAS

Lot	Block	Min. Prod Elev. (City Datum)	Min. Prod Elev. (USGS Datum)
1	1	178.6	1366.0
2	1	177.9	1365.3
3	1	177.9	1365.3
4	1	177.9	1365.3
5	1	177.9	1365.3
6	1	178.9	1366.3
7	1	178.9	1366.3
8	1	178.3	1365.7
9	1	178.1	1365.5
10	1	178.2	1365.6
11	1	178.2	1365.6
12	1	178.2	1365.6
13	1	179.4	1366.8
14	1	180.6	1368.0
15	1	179.1	1366.5
16	1	178.6	1366.0
17	1	178.6	1366.0
18	1	178.6	1366.0
19	1	178.6	1366.0
20	1	178.6	1366.0
22	1	178.6	1366.0



NOTES
BUILDING SETBACKS AND ADDITIONAL SETBACK REQUIREMENTS ARE PER THE DEVELOPMENT PLAN AS ON FILE WITH THE PLANNING DEPARTMENT.

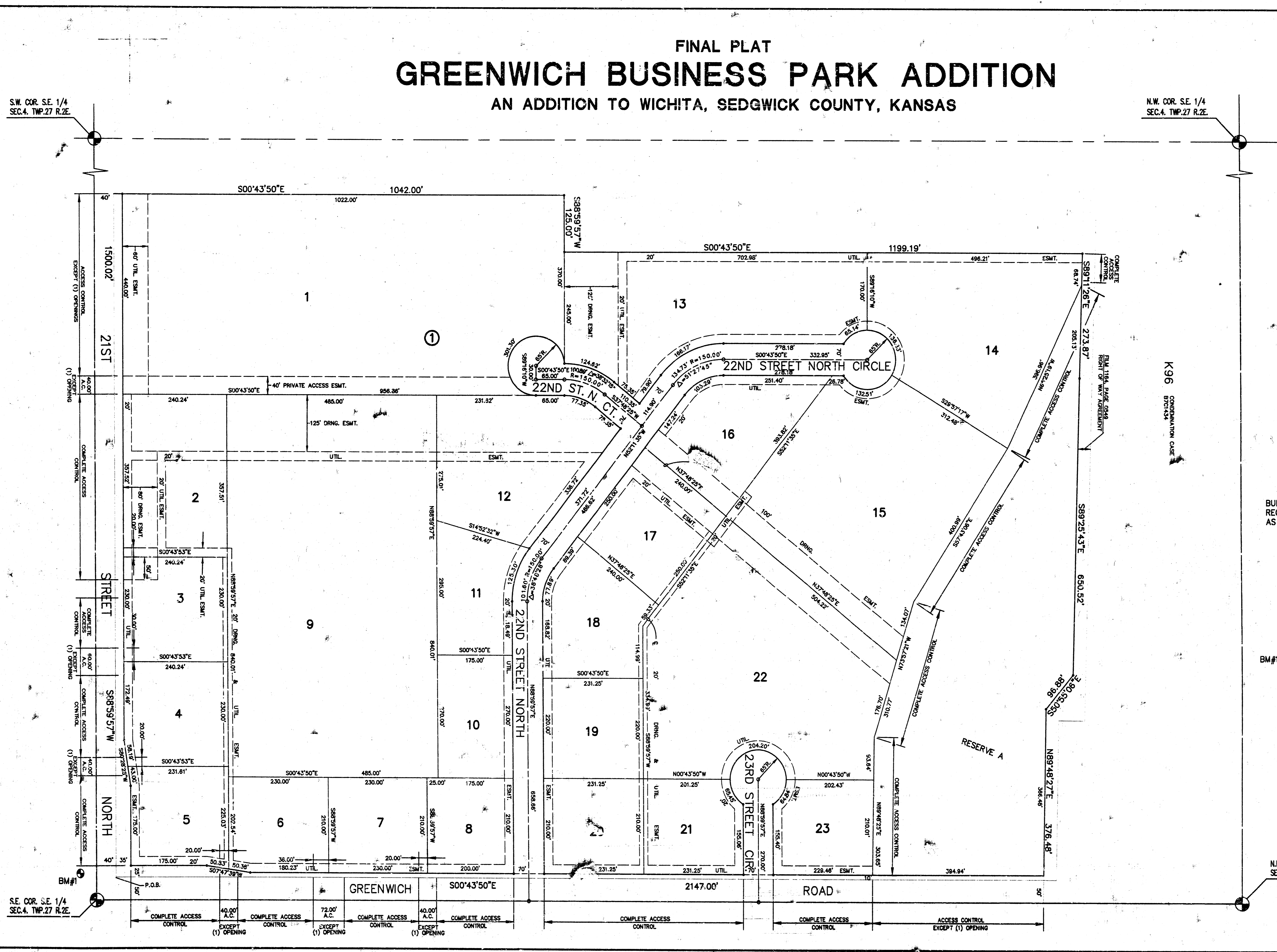
LEGEND
• - IRON

BENCHMARK
BM#1 GREENWICH AND 21ST. ST. N. COR. 41' SOUTH AND 58' WEST OF IRON CTR. LINE BOTH. 17.0' SW OF ASPHALT. 14.2' EAST OF FACE P.P. 17.0' WEST OF FACE P.P. ELEV. = 173.98

S.W. COR. S.E. 1/4
SEC.4. TWP.27 R.2E

N.W. COR. S.E. 1/4
SEC.4. TWP.27 R.2E

N.E. COR. S.E. 1/4
SEC.4. TWP.27 R.2E



177