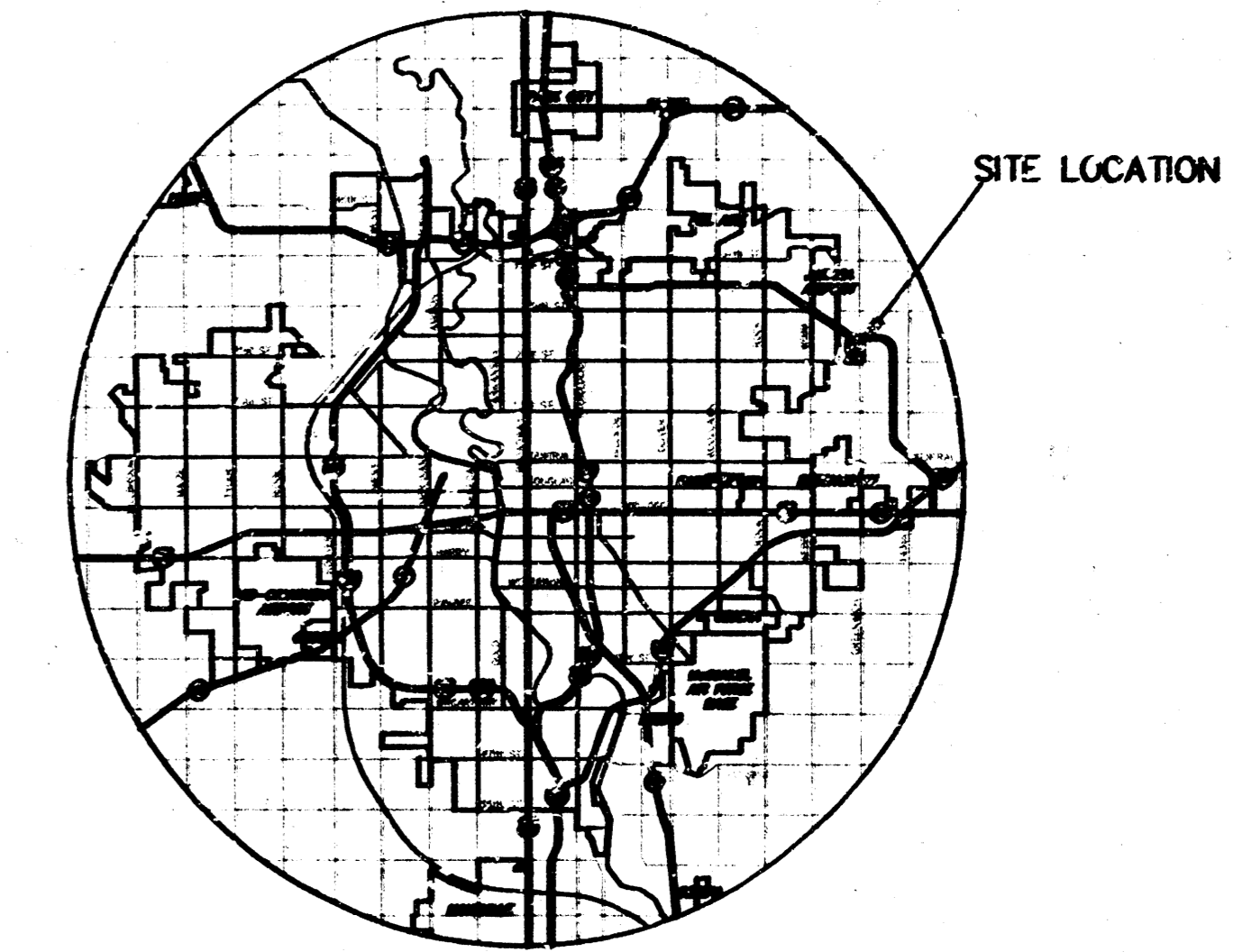


SANITARY SEWER PLANS LATERAL 139 WIS PROJECT NO. 468 82698

INDEX CODE 743136

CITY OF WICHITA, KANSAS

MICHAEL E. LINDEBAK, CITY ENGINEER



LOCATION MAP

INDEX TO DRAWINGS

| SHEET NO. | DESCRIPTION |
|-----------|------------------|
| 1 | TITLE SHEET |
| 2 | DETAILS |
| 3 | DETAILS |
| 4 | LINE 1 |
| 5 | LINE 1 & LINE 1A |
| 6 | FINAL PLAT |

GENERAL NOTES

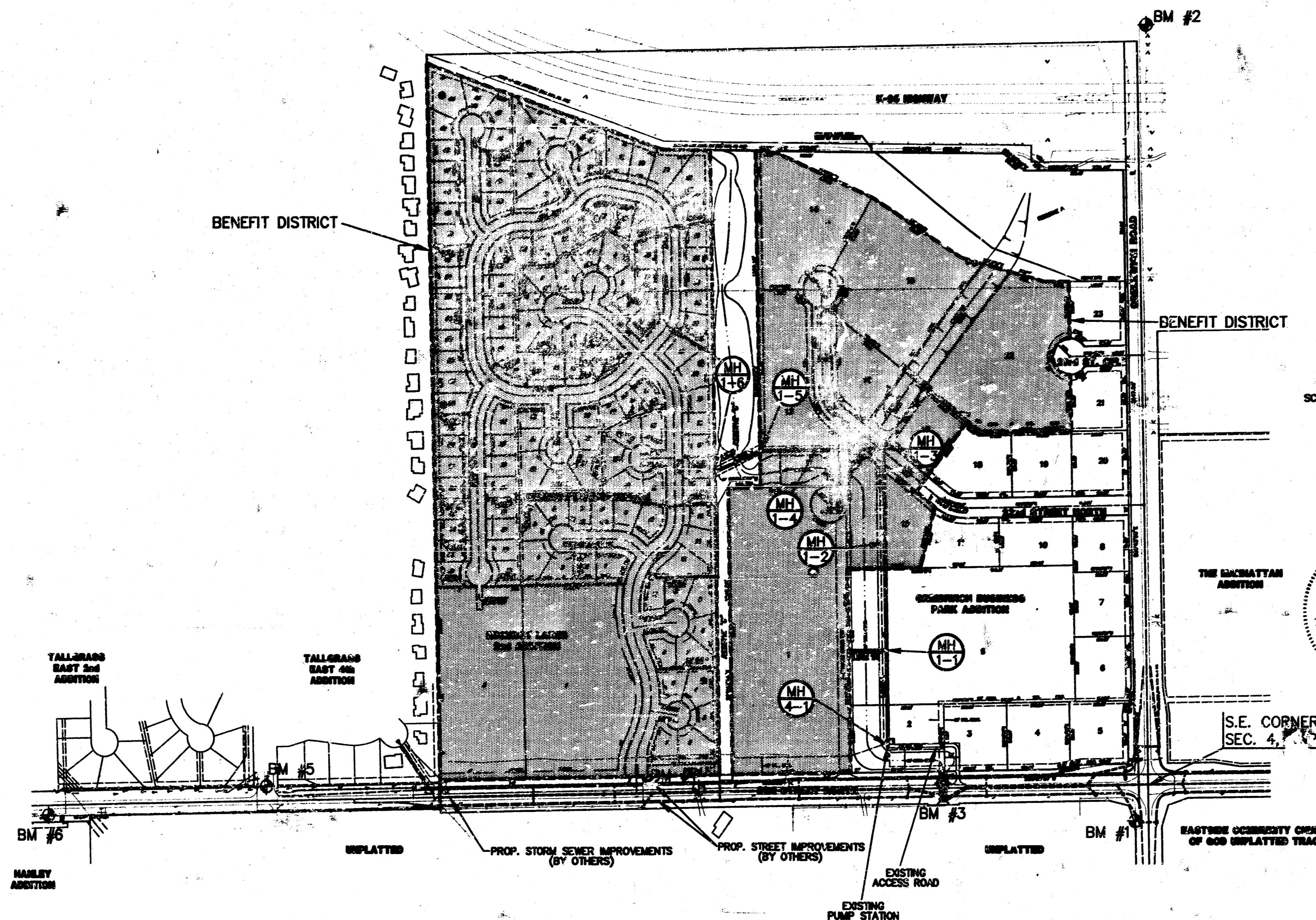
- THE CONTRACTOR SHALL BE RESPONSIBLE FOR PRESERVING PROPERTY IRONS. THE CONTRACTOR SHALL RE-ESTABLISH ANY PROPERTY IRONS WHICH ARE DAMAGED OR DESTROYED BY HIS CONSTRUCTION OPERATIONS. SUCH IRONS SHALL BE RE-ESTABLISHED BY A LICENSED LAND SURVEYOR IN ACCORDANCE WITH STATE LAWS.
- EXISTING UTILITIES AND THEIR LOCATIONS AS SHOWN ON THE PLANS REPRESENT THE BEST INFORMATION OBTAINABLE FOR DESIGN. LOCATION INFORMATION HAS BEEN OBTAINED FROM THE VARIOUS UTILITY COMPANIES AND IS EITHER FROM COMPANY RECORD DRAWINGS OR COMPANY PROVIDED FIELD LOCATIONS. THE PLAN LOCATIONS SHOWN ARE NOT GUARANTEED. ADDITIONAL EXISTING UTILITIES MAY ALSO BE ENCOUNTERED.
- CONTRACTOR SHALL PROVIDE A MINIMUM ADVANCE NOTICE OF FORTY-EIGHT (48) HOURS TO UTILITY COMPANIES PRIOR TO STARTING ANY EXCAVATION AS FOLLOWS:

| | |
|-----------------|-----------------------------|
| KANSAS ONE-CALL | 1-800-344-7233 |
| | or 687-2470 (LOCAL WICHITA) |

THE CONTRACTOR MUST NOTIFY THE FOLLOWING IN CASE OF AN EMERGENCY:

| | |
|---|----------------|
| SOUTHWESTERN BELL TELEPHONE COMPANY | 1-800-734-7630 |
| CABLEVISION | 282-0861 |
| K.G.M.E. (GAS & ELECTRIC) | 383-8600 |
| CITY OF WICHITA WATER & SEWER MAINTENANCE | 288-4908 |

IF THE CONTRACTOR DAMAGES EITHER GAS OR ELECTRIC LINES, HE SHALL IMMEDIATELY INFORM EMERGENCY PERSONNEL THROUGH 911.
- RUBBLE FROM THE REMOVAL OF MISCELLANEOUS STRUCTURES AND EXCESS EXCAVATION WHICH IS TO BE WASTED SHALL BE DISPOSED OF ON SITES TO BE PROVIDED BY THE CONTRACTOR. THESE SITES SHALL BE APPROVED BY THE ENGINEER AS TO SUITABILITY, APPEARANCE, AND SITE LOCATION. LOCATIONS THAT, IN THE OPINION OF THE ENGINEER, WILL LEAVE AN UNSIGHTLY APPEARANCE WILL NOT BE APPROVED. ALL DISPOSAL SITES MUST BE APPROVED BY THE KANSAS DEPARTMENT OF HEALTH AND ENVIRONMENT. MATERIAL EITHER STOCKPILED OR DISPOSED OF IN A FLOOD PLAIN WILL REQUIRE A KANSAS STATE BOARD OF AGRICULTURE PERMIT. ANY MATERIAL DUMPED IN WATERS OF THE UNITED STATES OR WETLANDS IS SUBJECT TO U.S. CORPS OF ENGINEERS PERMITTING REGULATIONS. ANY MATERIAL BURIED OR STOCKPILED BEYOND APPROVED CONSTRUCTION LIMITS WILL REQUIRE ADDITIONAL ARCHAEOLOGICAL INVESTIGATIONS UNLESS BURIED IN A PREVIOUSLY APPROVED BORROW LOCATION.
- COST OF EXCAVATION, HAULING, AND DUMPING OF EXCESS EXCAVATION SHALL BE SUBSIDIARY TO THE PROJECT.
- A PORTION OF EXCESS EXCAVATED MATERIAL SHALL BE MOUNDING AROUND MANHOLES WHICH EXTEND MORE THAN ONE (1) FOOT ABOVE THE EXISTING GROUND. SUCH MOUNDS SHALL BE CONSTRUCTED WITH A SIX (6) FOOT DIAMETER FLAT TOP WITH 4 TO 1 SIDE SLOPES DOWN TO THE ORIGINAL GROUND. THE ELEVATION OF THE FLAT TOP OF THE MOUND SHALL BE 0.4 FOOT BELOW THE TOP OF THE MANHOLE.
- ALL STUBS AND PLUGGED PIPES SHALL BE LOCATED WITH GREEN PLASTIC TAPE.
- PRIOR TO LAYING SEWER LINES USING EXISTING STUBS IN EXISTING MANHOLES, THE CONTRACTOR SHALL EXPOSE AND VERIFY THE ELEVATION, GRADE, AND ALIGNMENT OF EXISTING STUBS AND NOTIFY THE ENGINEER OF ANY DEVIATION FROM THE PLAN. WHERE CONNECTION TO AN EXISTING MANHOLE THAT DOES NOT HAVE AN EXISTING STUB OR THE STUB IS UNUSABLE DUE TO ELEVATION GRADE OR ALIGNMENT, THE CONTRACTOR SHALL RESHAPE THE EXISTING MANHOLE INVERT TO PROVIDE SMOOTH FLOW. THE COST OF RESHAPING EXISTING MANHOLE INVERTS IS INCIDENTAL TO THE PROJECT.
- ALL DISTURBED AREAS SHALL BE SEEDED WITH RYE GRASS AT A RATE OF 200 LBS./ ACRE WITHIN 10 DAYS OF CONSTRUCTION. COST SHALL BE SUBSIDIARY TO PROJECT.
- CONTRACTOR SHALL INSTALL SEDIMENT BARRIERS AS INDICATED. THE CONTRACTOR SHALL BE RESPONSIBLE FOR CONTROLLING ALL EROSION CAUSED BY SANITARY SEWER CONSTRUCTION.



*Booked
N-294
2/13/98
R. Loomis*

BENCHMARKS

- BM #1 GREENWICH AND 21st. N. COW, 41' SOUTH AND 58' WEST OF IRON CTR. LINE BOTH. 17' SW OF ASPHALT, 14.2' EAST OF FACE P.P., 17' WEST OF FACE P.P.. ELEV. = 173.98
- BM #2 STEP SPIKE IN WEST SIDE P.P., 6th POLE NORTH OF K-96 ON EAST SIDE OF GREENWICH RD. ELEV. = 184.45
- BM #3 "□" CUT C/L HEADWALL 3-8x4.5 BOXES, NORTH SIDE OF 21st STREET NORTH AT DITCH. ELEV. = 175.15
- BM #4 R.R. SPIKE, NORTH EDGE OF ASPHALT AT C/L OF DRIVEWAY. SOUTH SIDE OF HOUSE #10715. ELEV. = 183.87
- BM #5 "□" CUT TOP OF CURB AT NOSE OF MEDIAN CURB AT 21st STREET, NORTH AND CLUBHOUSE DRIVE. ELEV. = 211.09
- BM #6 R.R. SPIKE NORTH SIDE OF POWER POLE. ELEV. = 202.89

LATERAL 139 WIS
PROJECT NAME

TITLE SHEET
SHEET TITLE

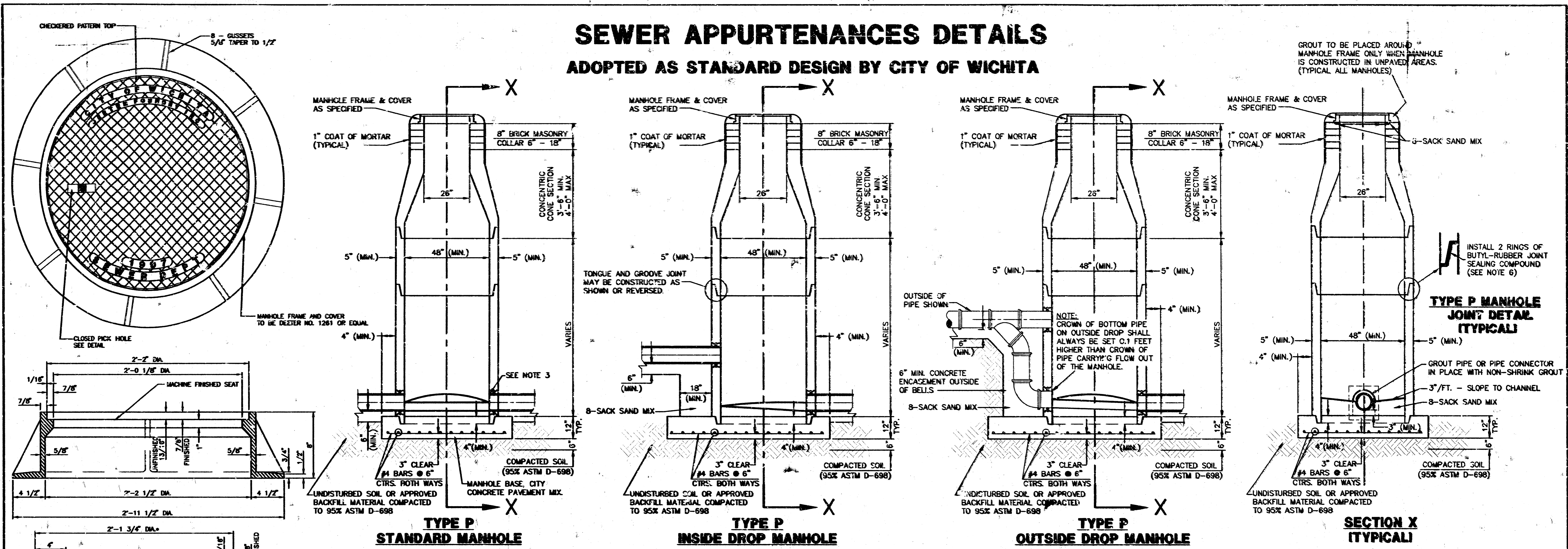
| | | |
|-----------------------------|----------------------------|----------------------------|
| D.L.M. DESIGN BY. | R.S.B. DRAWN BY. | MKEC CHECKED BY. |
| 5/27/97 DATE | 96086-BT JOB NO. | 1 / 6 SHEET OF |

MID-KANSAS ENGINEERING CONSULTANTS, INC.
411 N. WEBB ROAD
WICHITA, KS. 67306
316-694-9600

H:\CT\11\1996\SAN\GSP-GRV\196681.Tup May 27 12:42:04 1997

SEWER APPURTENANCES DETAILS

ADOPTED AS STANDARD DESIGN BY CITY OF WICHITA



TYPE P STANDARD MANHOLE

TYPE P INSIDE DROP MANHOLE

TYPE P OUTSIDE DROP MANHOLE

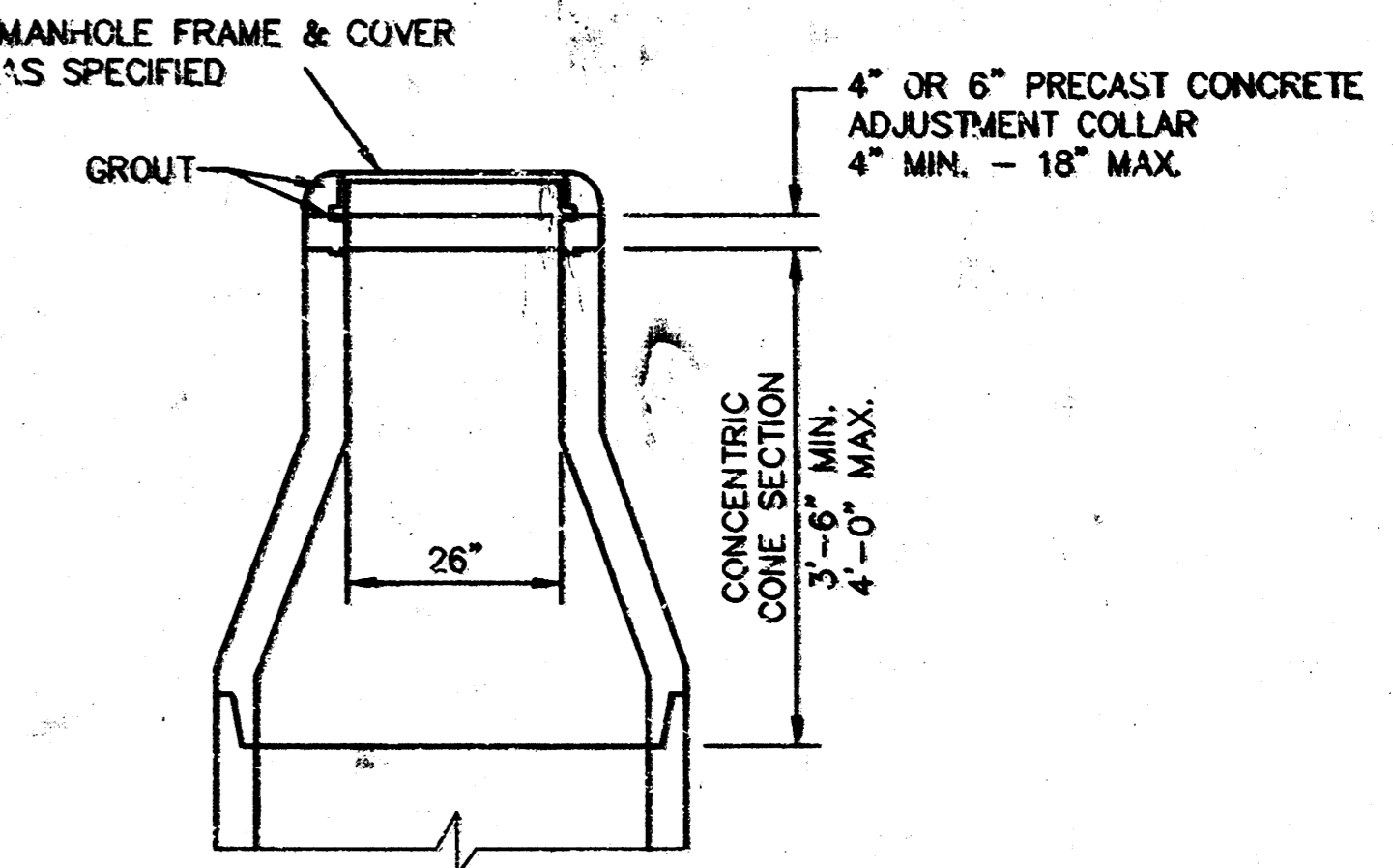
SECTION X (TYPICAL)

GENERAL NOTES - PRECAST MANHOLE NOTES

- ALL PRECAST CONCRETE MANHOLE SECTIONS SHALL CONFORM TO THE LATEST REVISIONS OF A.S.T.M. C478 AS MODIFIED BY THE SPECIFICATIONS.
- NON-SHRINK GROUT SHALL BE NON-METALLIC TYPE.
- APPROVED FLEXIBLE WATERSTOP GASKETS SHALL BE INSTALLED TO JOIN THE SEWER TO THE MANHOLE WALL WHEN A.B.S. COMPOSITE PIPE OR P.V.C. PIPE IS USED. FOR OTHER TYPES OF PIPE THE SEWER SHALL BE GROUTED IN PLACE WITH NON-SHRINK GROUT. THE SEWER PIPE SHALL BE SUPPORTED WITH CONCRETE ENCASEMENT A MINIMUM OF 3 FEET FROM THE MANHOLE WALL AND TO THE FIRST JOINT FOR V.C.P. SUCH THAT THE JOINT REMAINS FLEXIBLE.
- ALL INSIDE SURFACES OF THE CONCRETE MANHOLE WHICH WOULD BE EXPOSED TO SEWER GAS SHALL BE COATED WITH 2 COATS TNEC SERIES 66 HI-BUILD EPOXYLINE, DRY THICKNESS OF 8 MILS (MIN).
- EXTERIOR MANHOLE WALLS SHALL BE COATED WITH 1 COAT MOBILARMA 633 BITUMINUS COATING.
- JOINT SEALING COMPOUND SHALL BE KENT SEAL NO. 2 OR APPROVED EQUAL.
- PRECAST MANHOLES SHALL BE SET AT LEAST 4 INCHES INTO THE MANHOLE BASE.
- TOP OF MANHOLE FLOOR SLAB SHALL BE AT LEAST 3 INCHES BELOW THE FLOW LINE OF THE OUTLET PIPE TO INSURE SUFFICIENT MINIMUM THICKNESS OF SHAPED INVERT.
- LIFTING HOLES SHALL BE FILLED WITH NON-SHRINK GROUT AND THE INTERIOR SURFACE COATED AS SPECIFIED.
- MORTAR USED IN MASONRY CONSTRUCTION SHALL CONTAIN 8 SACKS OF CEMENT PER CUBIC YARD. CONCRETE USED IN MANHOLE BASES SHALL CONFORM TO THE REQUIREMENTS OF CONCRETE FOR CONCRETE PAVEMENT CONSTRUCTION AS SPECIFIED IN THE CITY STANDARD PAVING SPECIFICATIONS USING CITY CONCRETE PAVEMENT MIX WITHOUT AIR ENTRAINING ADMIXTURE. MORTAR SHALL BE PLACED AROUND THE MANHOLE RING AS SHOWN ON THE DRAWINGS WHEN MANHOLES ARE CONSTRUCTED IN UNPAVED AREAS. MANHOLES CONSTRUCTED WHERE PIPE SIZES ARE SMALLER THAN 24\"/>

INSTALL 2 RINGS OF BUTYL-RUBBER JOINT SEALING COMPOUND (SEE NOTE 6)

TYPE P MANHOLE JOINT DETAIL (TYPICAL)



ALTERNATE CONSTRUCTION IN UNPAVED AREAS

REVISED: 6-12-86

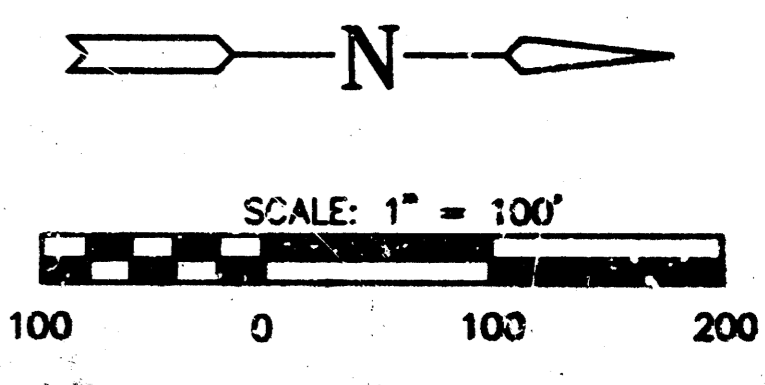
MANHOLE DETAILS

| | | | |
|-------------------------|--------|------------|-----------------------------|
| CITY OF WICHITA, KANSAS | | | |
| Design | C.O.W. | Checked by | Checked by |
| Drawn by | Date | Date | APRIL 1997 Job No. 96066BD2 |

2/6

FINAL PLAT
GREENWICH BUSINESS PARK ADDITION
 AN ADDITION TO WICHITA, SEDGWICK COUNTY, KANSAS

| Lot | Block | Min. Pod Elev. (City Datum) | Min. Pod Elev. (UGCS Datum) |
|-----|-------|-----------------------------|-----------------------------|
| 1 | 1 | 178.6 | 1368.0 |
| 2 | 1 | 177.9 | 1365.3 |
| 3 | 1 | 177.9 | 1365.3 |
| 4 | 1 | 177.9 | 1365.3 |
| 5 | 1 | 177.9 | 1365.3 |
| 6 | 1 | 178.9 | 1373.3 |
| 7 | 1 | 178.9 | 1368.3 |
| 8 | 1 | 178.3 | 1365.7 |
| 9 | 1 | 178.1 | 1365.5 |
| 10 | 1 | 178.2 | 1365.6 |
| 11 | 1 | 178.2 | 1365.6 |
| 12 | 1 | 178.2 | 1365.6 |
| 13 | 1 | 178.4 | 1366.8 |
| 14 | 1 | 180.6 | 1388.0 |
| 15 | 1 | 179.1 | 1368.5 |
| 16 | 1 | 178.6 | 1366.0 |
| 17 | 1 | 178.6 | 1366.0 |
| 18 | 1 | 178.6 | 1366.0 |
| 19 | 1 | 178.6 | 1366.0 |
| 20 | 1 | 178.6 | 1366.0 |
| 22 | 1 | 178.6 | 1366.0 |



NOTES

BUILDING SETBACKS AND ADDITIONAL SETBACK REQUIREMENTS ARE PER THE DEVELOPMENT PLAN AS ON FILE WITH THE PLANNING DEPARTMENT.

LEGEND

--- IRON

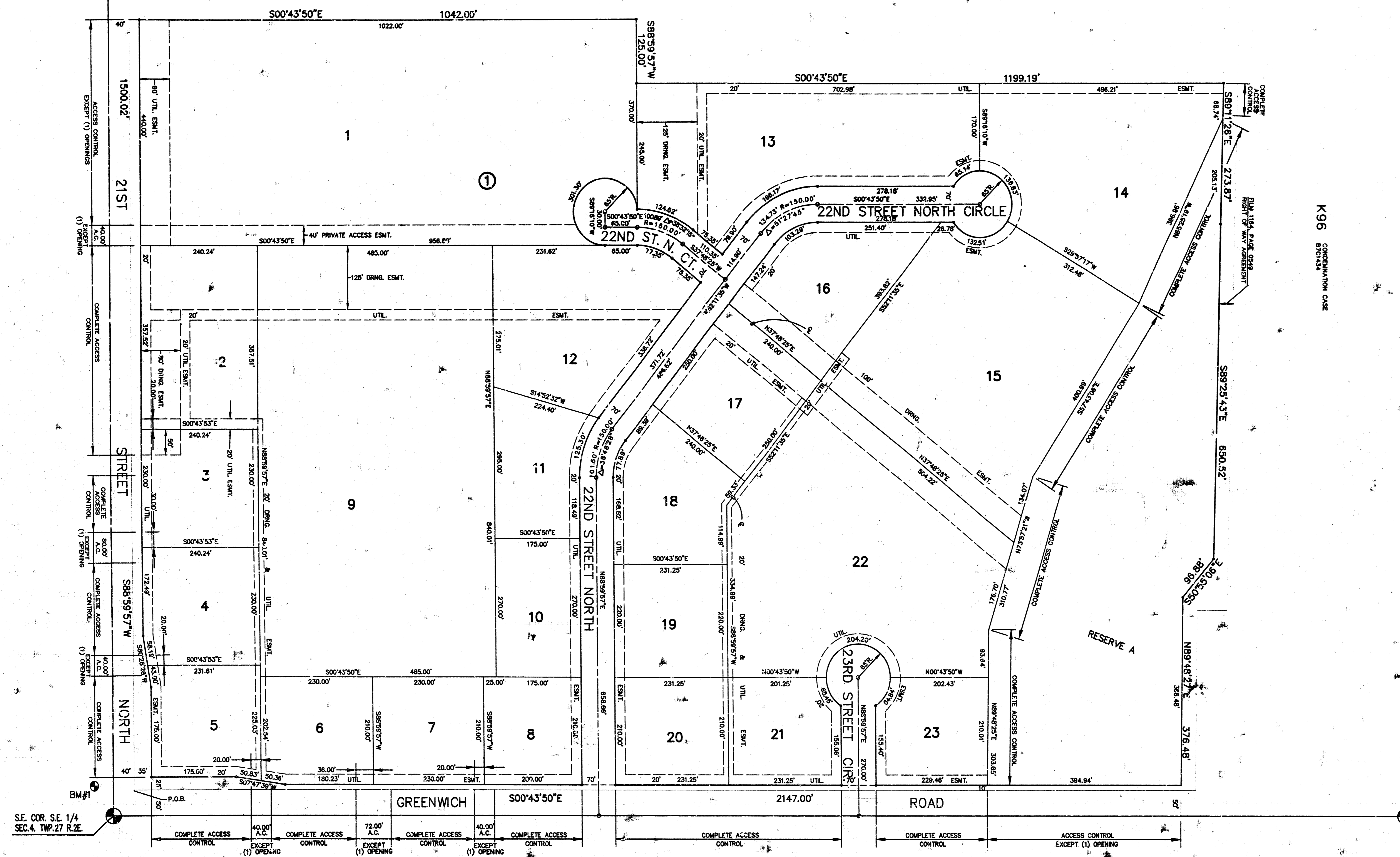
BENCHMARK

BM#1 GREENWICH AND 21ST. ST. N. COR. 41' SOUTH AND 58' WEST OF IRON CTR. LINE BOTH. 17.0' SW OF ASPHALT, 14.2' EAST OF FACE P.P. 17.0' WEST OF FACE P.P. ELEV. = 173.98

N.E. COR. SE. 1/4 SEC. 4, TWP. 27 R. 2E.

S.W. COR. SE. 1/4 SEC. 4, TWP. 27 R. 2E.

N.W. COR. SE. 1/4 SEC. 4, TWP. 27 R. 2E.



6/3

5-1-5-41