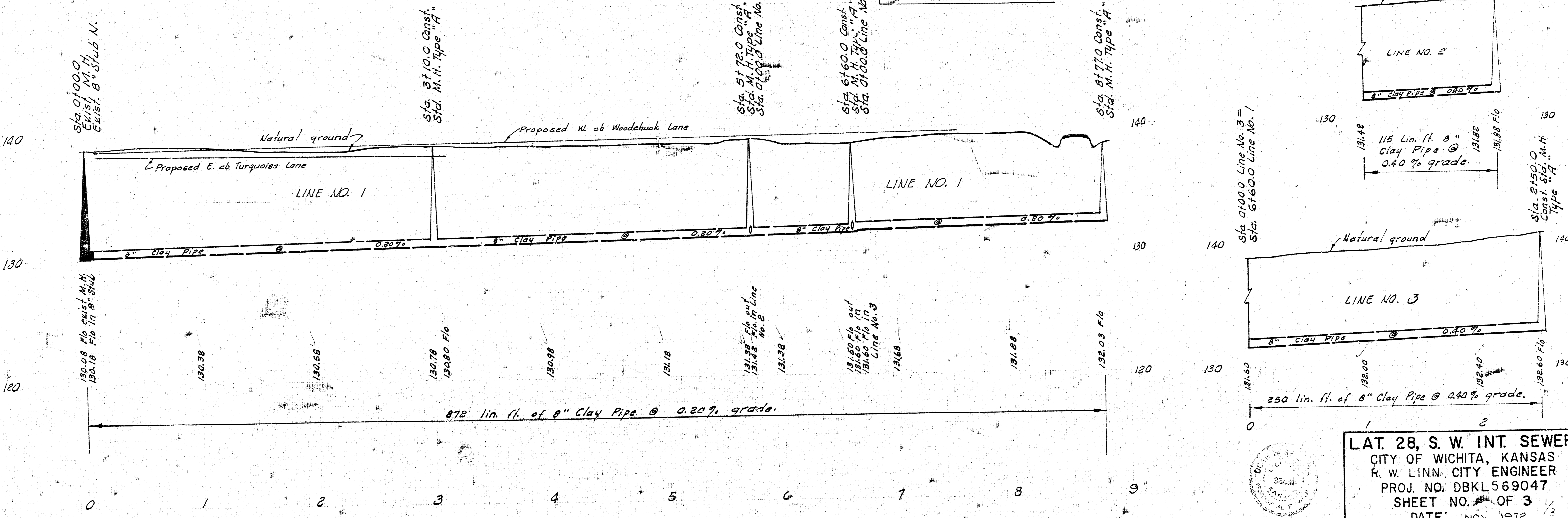
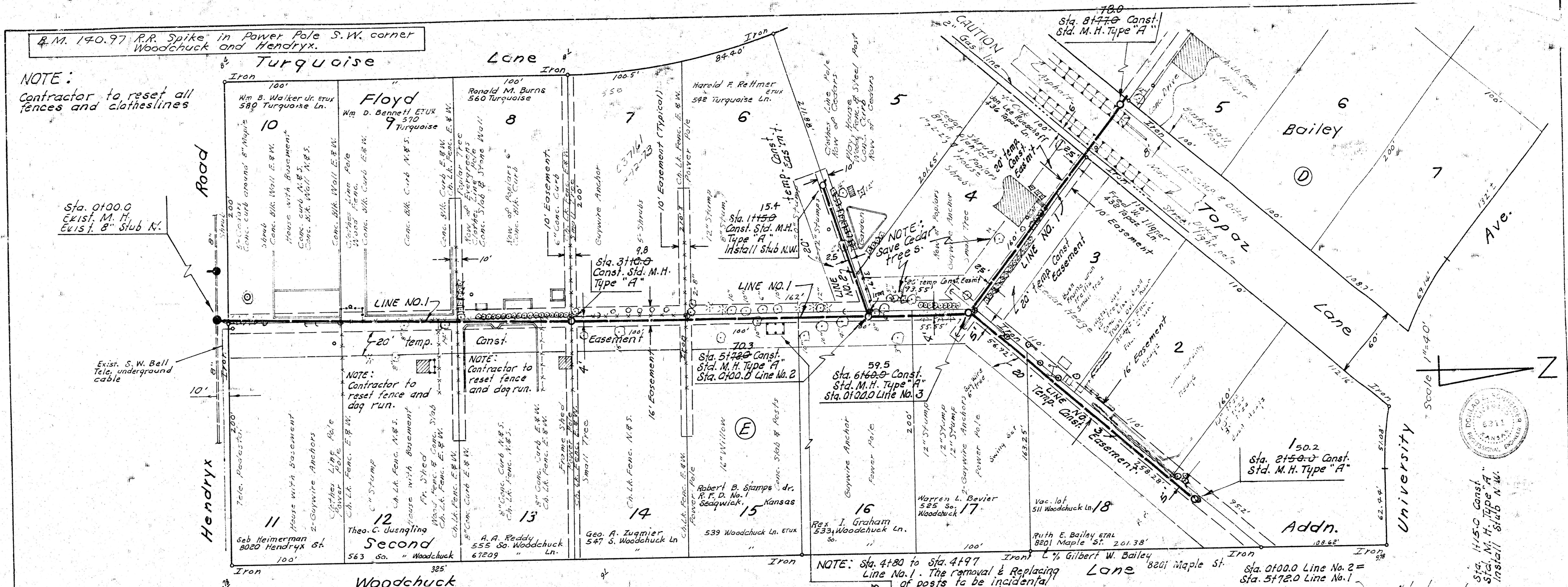


M. 140.97 R.R. Spike in Power Pole S.W. corner Woodchuck and Hendryx.

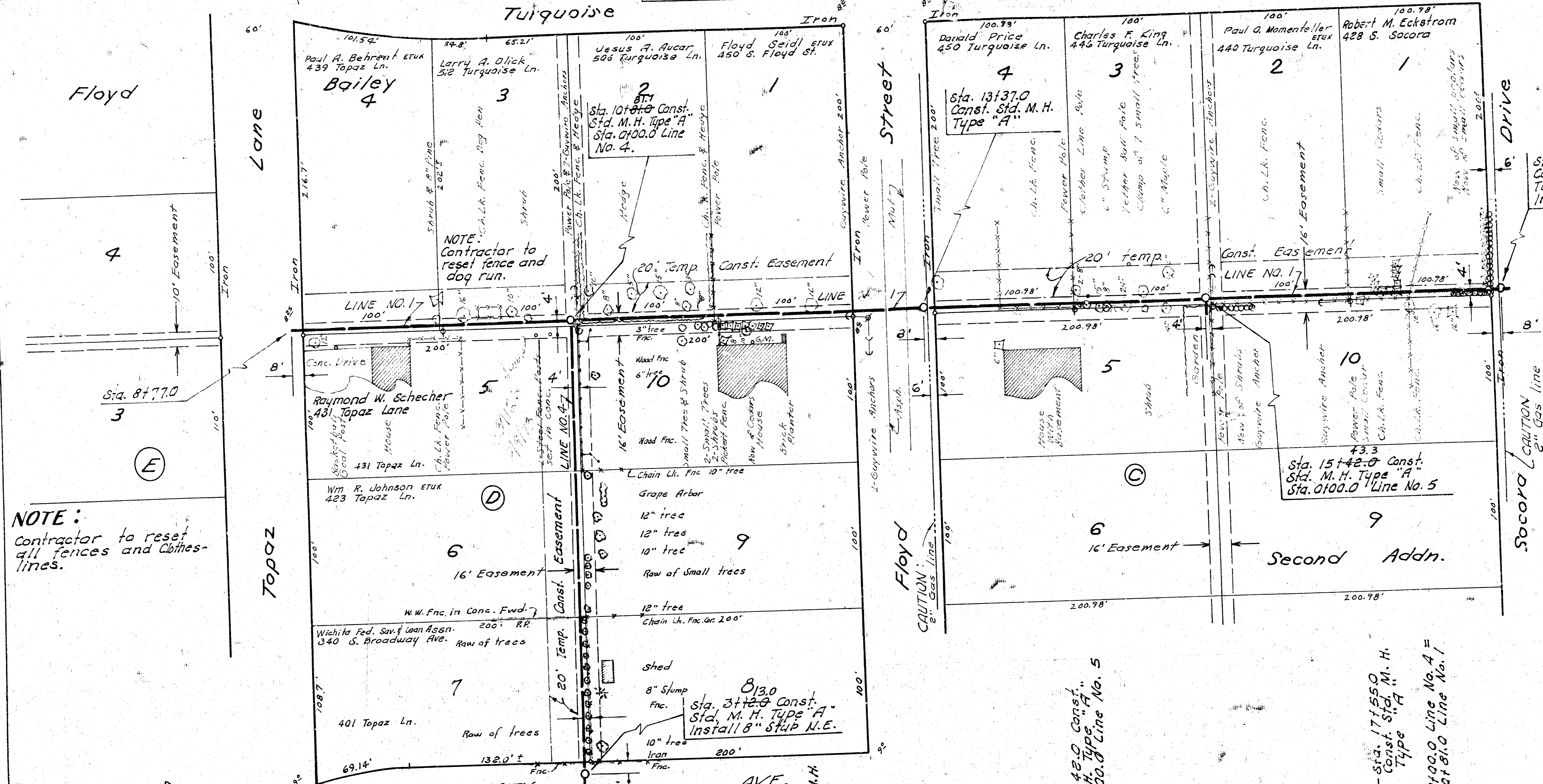
NOTE:  
Contractor to reset all fences and clotheslines



LAT. 28, S. W. INT. SEWER  
CITY OF WICHITA, KANSAS  
R. W. LINN, CITY ENGINEER  
PROJ. NO. DBKL569047  
SHEET NO. 3 OF 3  
DATE: NOV. 1972

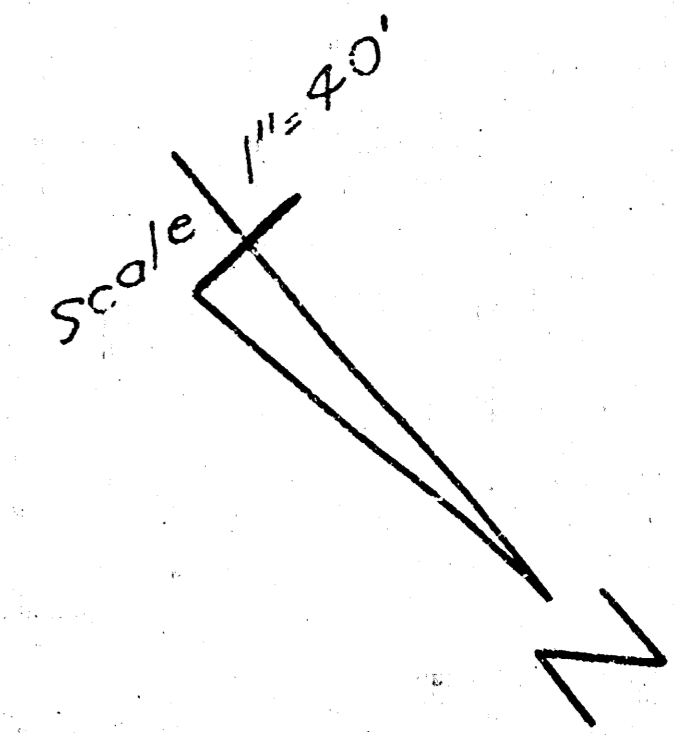
AS BUILT Final Meas. K-101

B.M. 138.05 RR Spike S.W. side of power pole on N.E. corner Floyd & Turquoise.



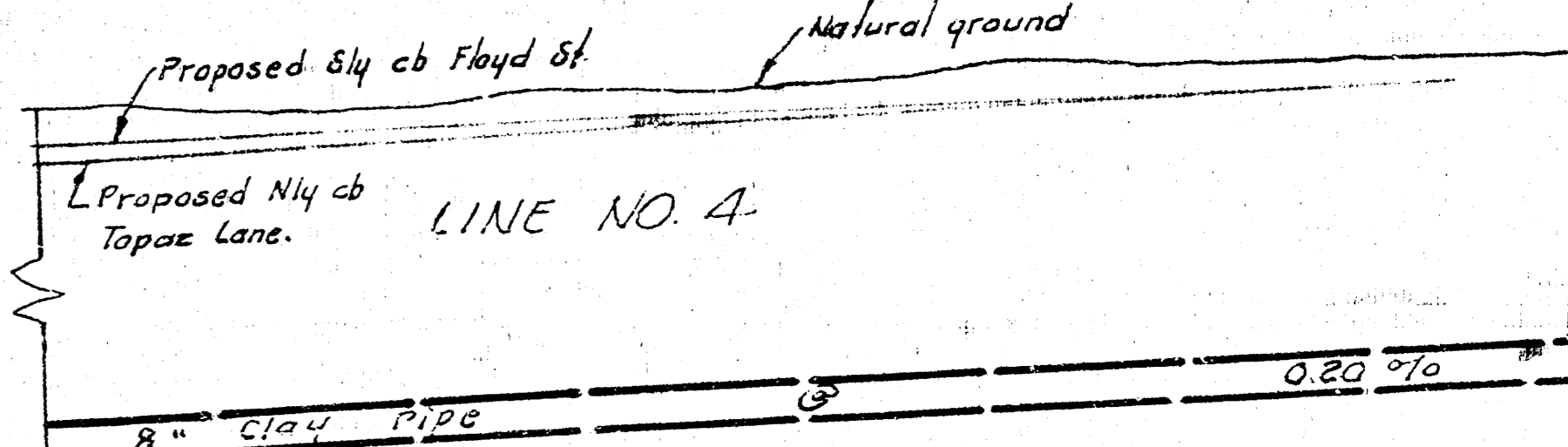
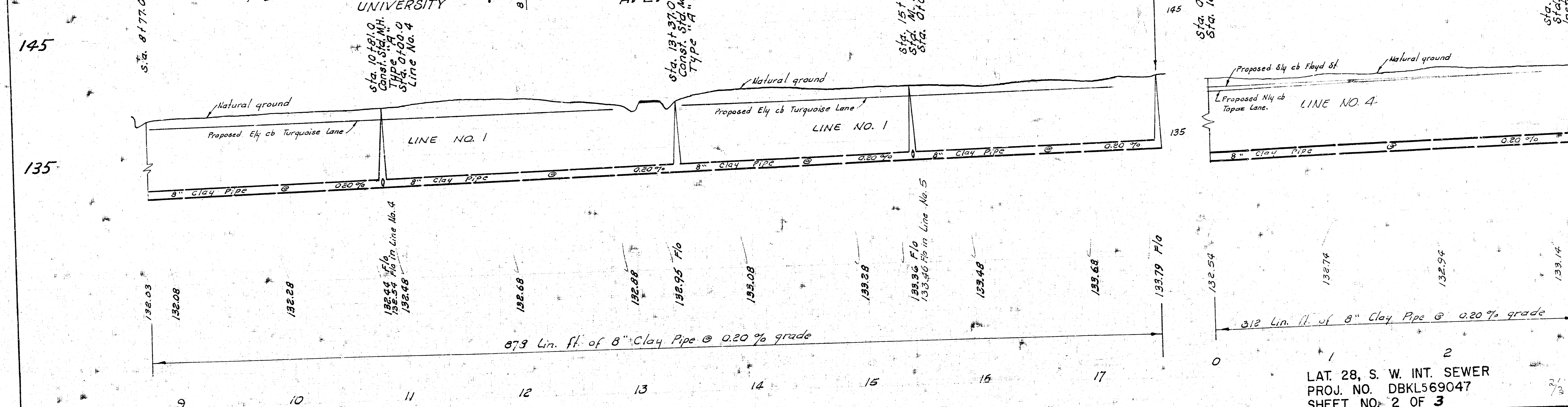
**NOTE:**  
Contractor to reset all fences and clothes-lines.

Sta. 17155.0  
Const. Std. M. H. Type "A"  
Install 8" stub NW



**NOTE:**  
Sta. 2105 Line No. 4  
The removal and replacing of Conc. foundation under fence is to be incidental to project.

Plan Scale 1"=40'  
Profile Scale Horiz. 1"=40'  
Vert. 1"=4'



LAT. 28, S. W. INT. SEWER  
PROJ. NO. DBKL569047  
SHEET NO. 2 OF 3

**NOTE:**  
Contractor to reset all fences and clotheslines.

Bk. \* DCD-31 29.4  
B. M. 139.07 Spk. W. Side R.R. e. side Floyd St. 200' ± N. of Turquoise.  
B. M. 140.45 Spk. N. Side Light Pole s.w. cor. University & Socora.

