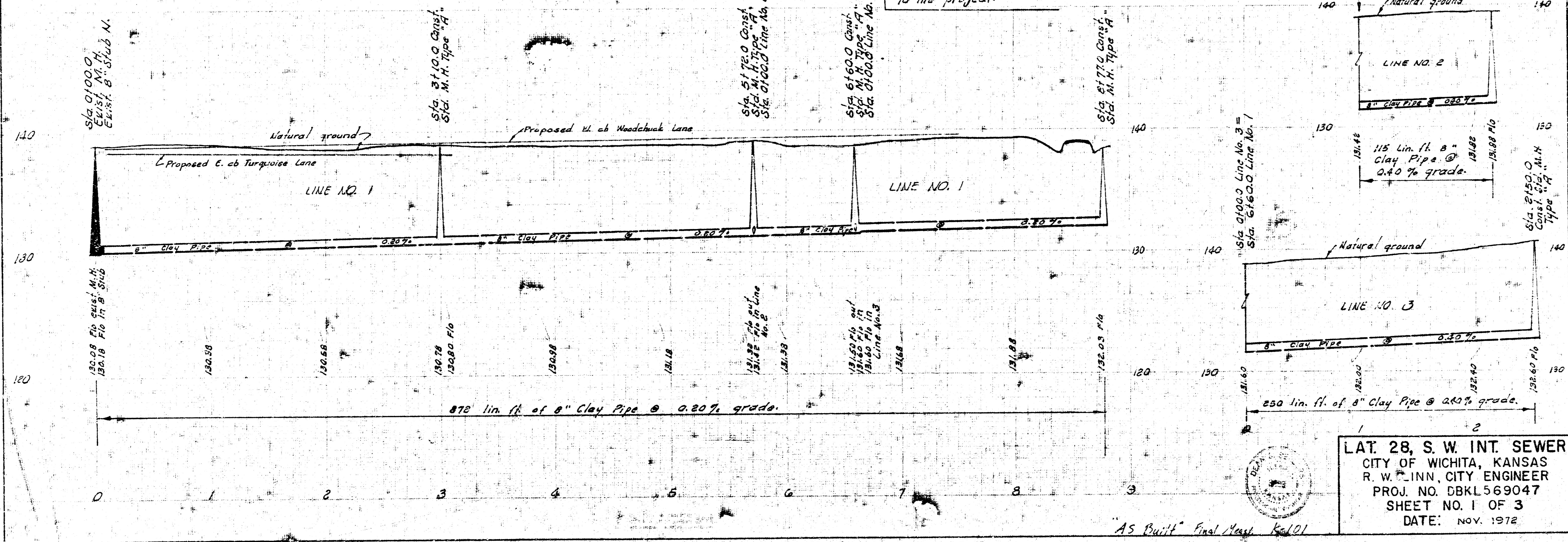
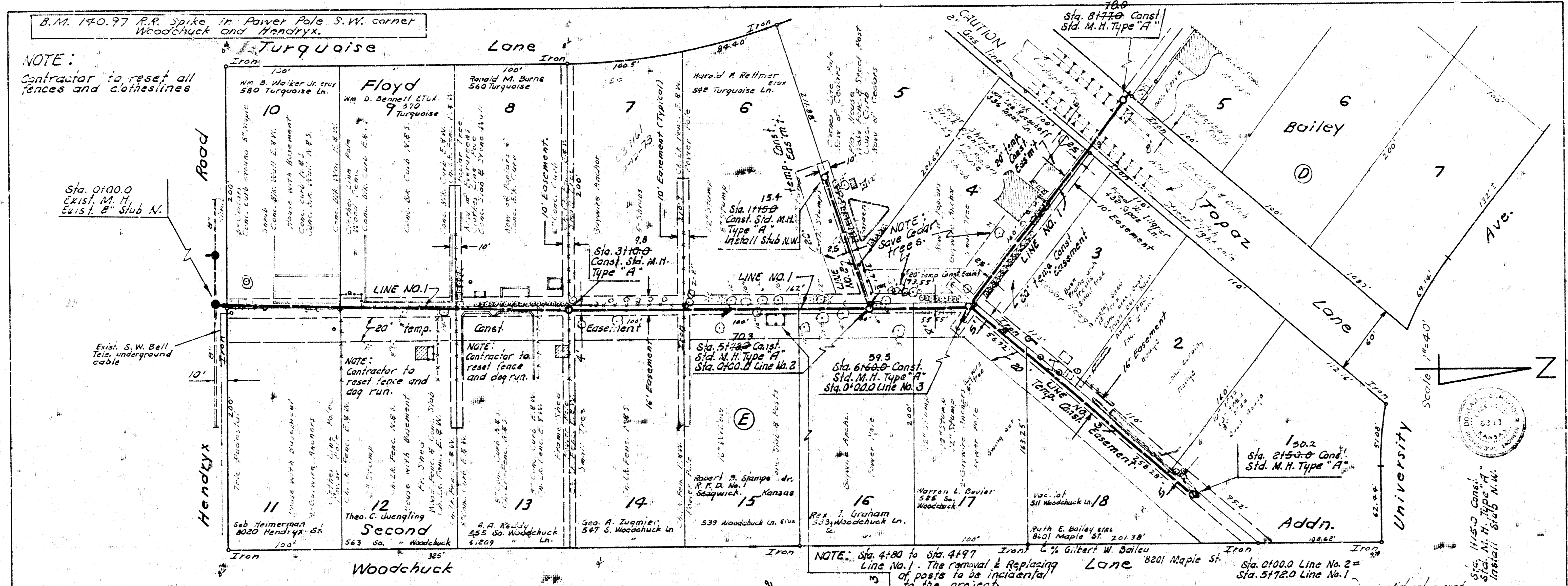


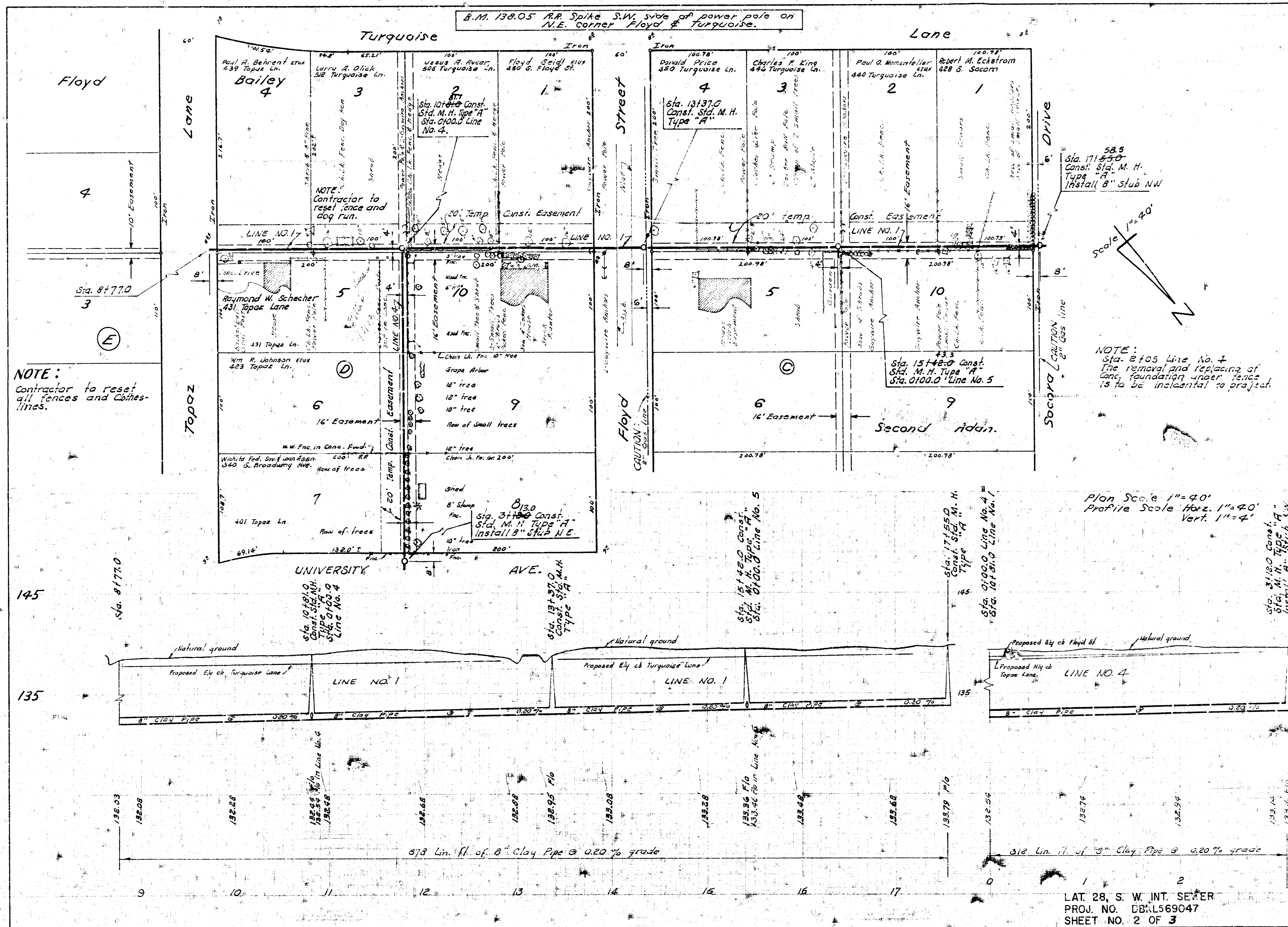
B.M. 140.97 R.R. Spike in Power Pole S.W. corner Woodchuck and Hendryx.

NOTE:
Contractor to reset all fences and clotheslines



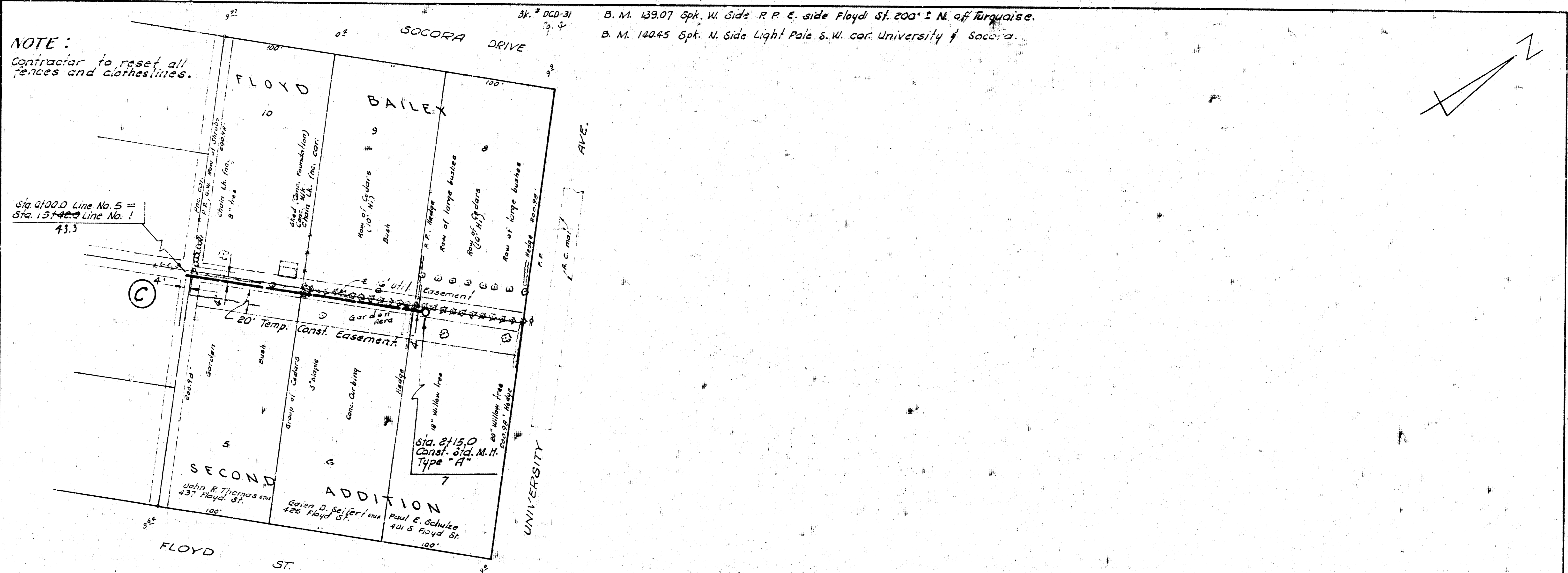
LAT 28, S. W. INT. SEWER
CITY OF WICHITA, KANSAS
R. W. INN, CITY ENGINEER
PROJ. NO. DBKL569047
SHEET NO. 1 OF 3
DATE: NOV. 1972

AS BUILT Final Map K-101

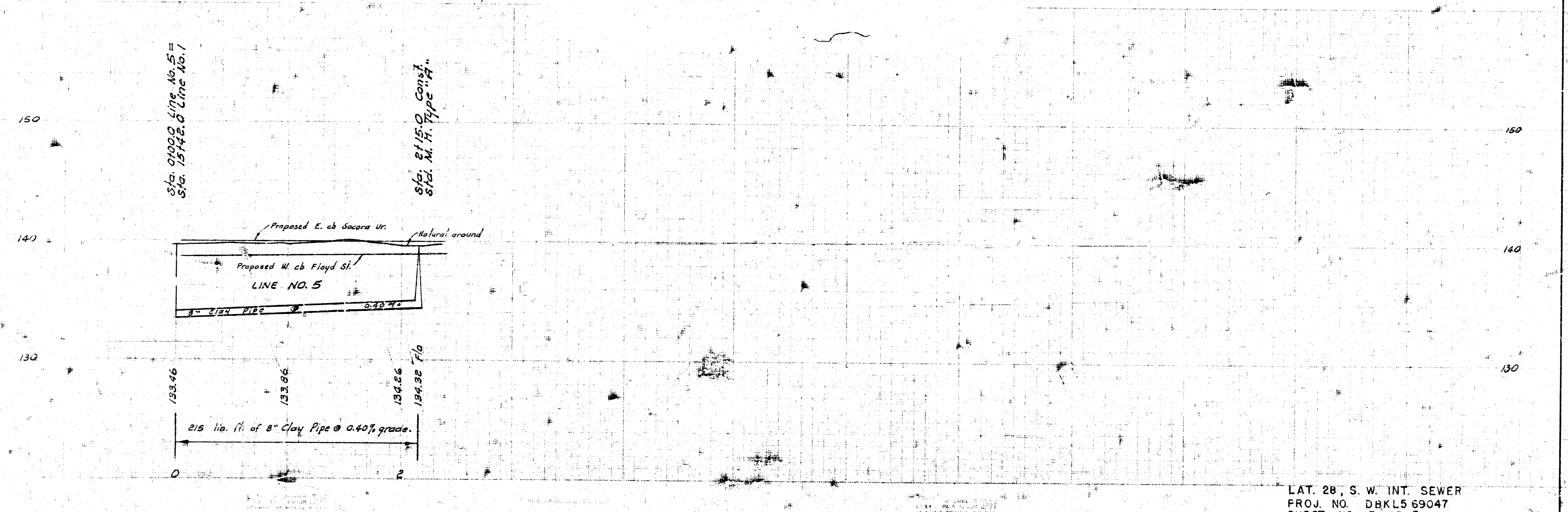
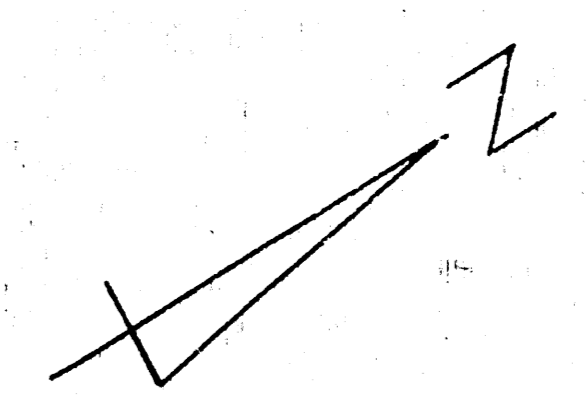


LAT 28, S. W. INT. SEWER
 PROJ. NO. DBL569047
 SHEET NO. 2 OF 3

NOTE:
Contractor to reset all
fences and clotheslines.



B.M. 139.07 Spk. W. Side R.R. E. side Floyd St. 200' E. N. of Turquoise.
B.M. 140.45 Spk. N. Side Light Pole S.W. cor. University & Socora.



LAT. 28, S. W. INT. SEWER
PROJ. NO. DBKL5 69047
SHEET NO. 3 OF 3

11 4 2 (12)