

**SANITARY SEWER IMPROVEMENTS TO SERVE
BARRINGTON CORNER 2ND ADDITION**

Lat. 36, Main 15, SW 1

Project Number

468 82781

Index Code

748328

CITY OF WICHITA, KANSAS

Michael E. Lindebak, P. E., City Engineer

BENCHMARK

*RR Spike in Power Pole
Northeast Corner of 21st. & Ridge Road
Elev. = 1,330.70'*

GENERAL NOTES

- Contractor will be required to provide notice to utility companies a minimum of twenty-four (24) hours prior to any excavation, as follows:

<i>Kansas One-Call</i>	<i>687-2470</i>
------------------------	-----------------

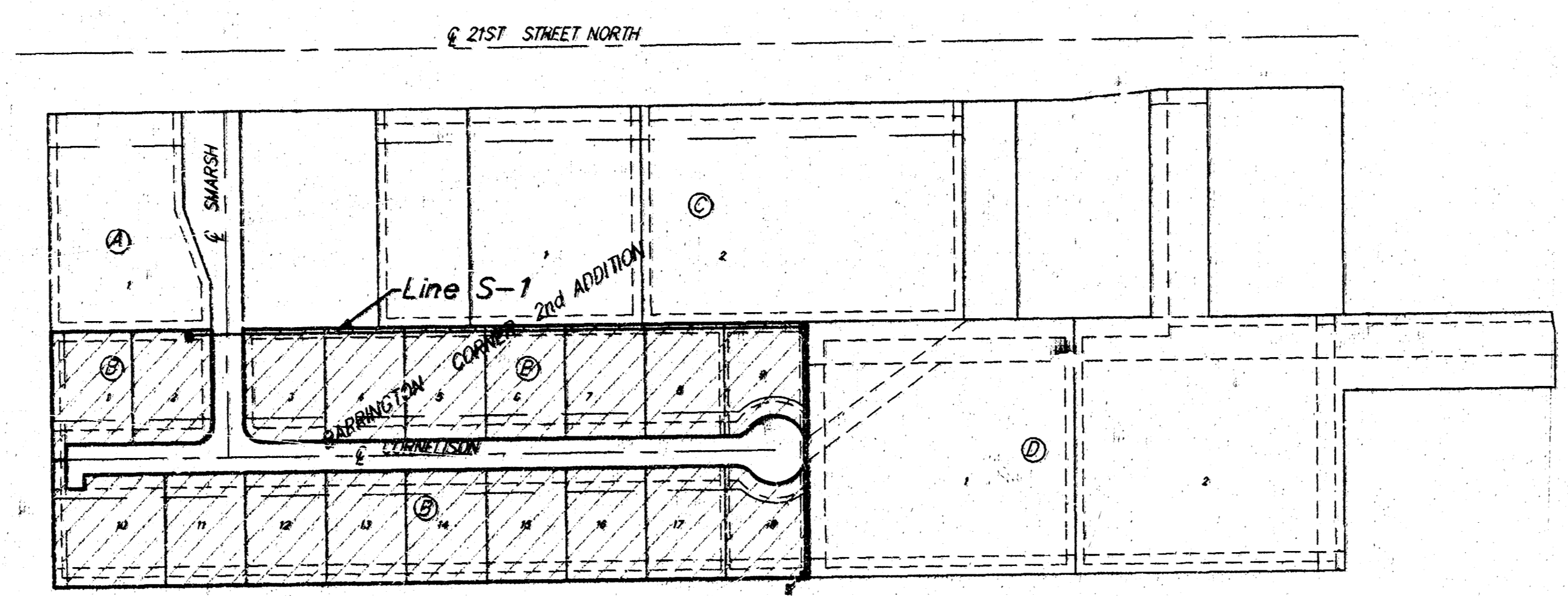
The Contractor must notify the following in case of an emergency:

<i>Cablevision</i>	<i>262-4270</i>
<i>or</i>	<i>263-2061</i>
<i>K.P.L. Gas Service Company</i>	<i>383-8650</i>
<i>Kansas Gas & Electric Company</i>	<i>363-8600</i>
<i>Arko Gas Company</i>	<i>942-8350</i>
<i>Southwestern Bell Telephone Company</i>	<i>1-571-2611</i>
<i>City of Wichita Water Department</i>	<i>268-4908</i>
<i>City of Wichita Sewer Department</i>	<i>268-4071</i>
- Exist. utilities and their locations, as shown on the plans, represent the best information obtainable for design. Location information has been obtained from the various utility companies and is either from company record drawings or company-provided field locations. The Contractor will be required to work around existing utilities which do not conflict with proposed construction.
- The Contractor to verify utility locations prior to construction of this project.
- Utility service and installation shall be coordinated with the respective utility owners. Contacts are:

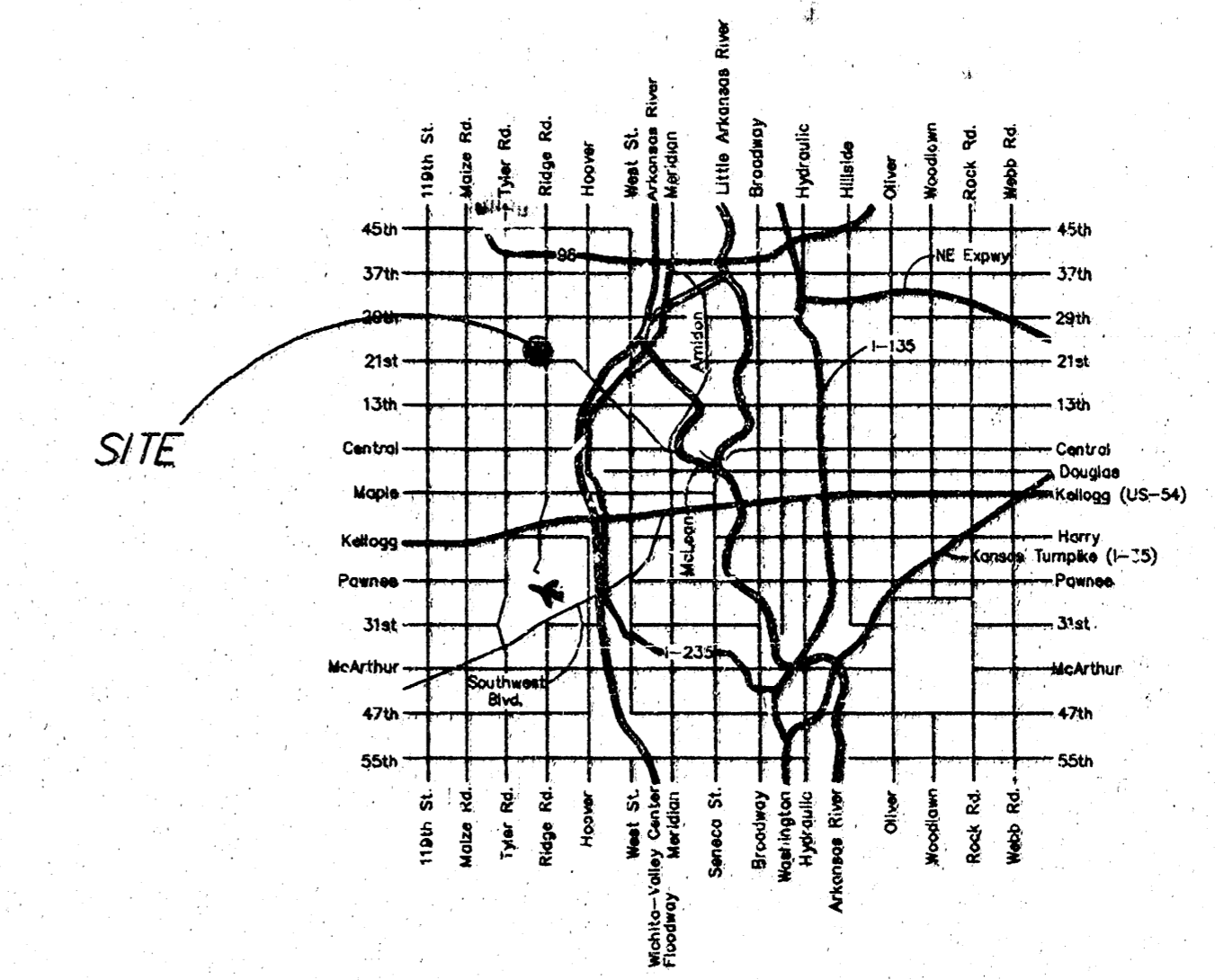
<i>KG&E Gas</i>	<i>Steve Orth</i>	<i>261-6867</i>
<i>K.G. & E.</i>	<i>Miles Capps</i>	<i>261-6434</i>
<i>Wichita Water</i>	<i>Chuck Steven</i>	<i>268-4535</i>
	<i>Joe Botinelly</i>	<i>268-4908</i>
<i>Southwestern Bell</i>	<i>Jim Tabin</i>	<i>268-2759</i>
- All areas disturbed by construction shall be seeded with rye Rebel II Fescue grass at a rate of 350 lbs./acre immediately following construction in that area.
- Traffic affected by the construction of this project shall be handled in accordance with the latest edition of the Manual on Uniform Traffic Control Devices.

INDEX

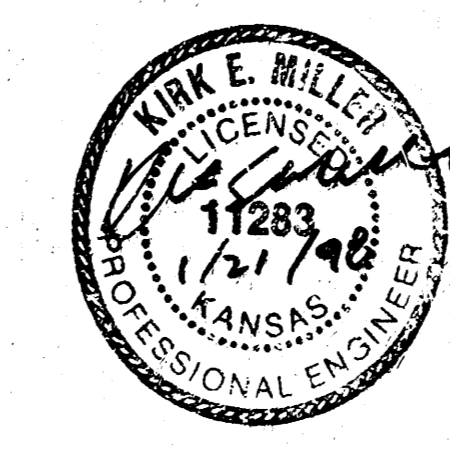
- Title Sheet
- Plan and Profile
- Easement Grading Plan
- 5 Cross-Sections



Legend:
 Benefit District Included

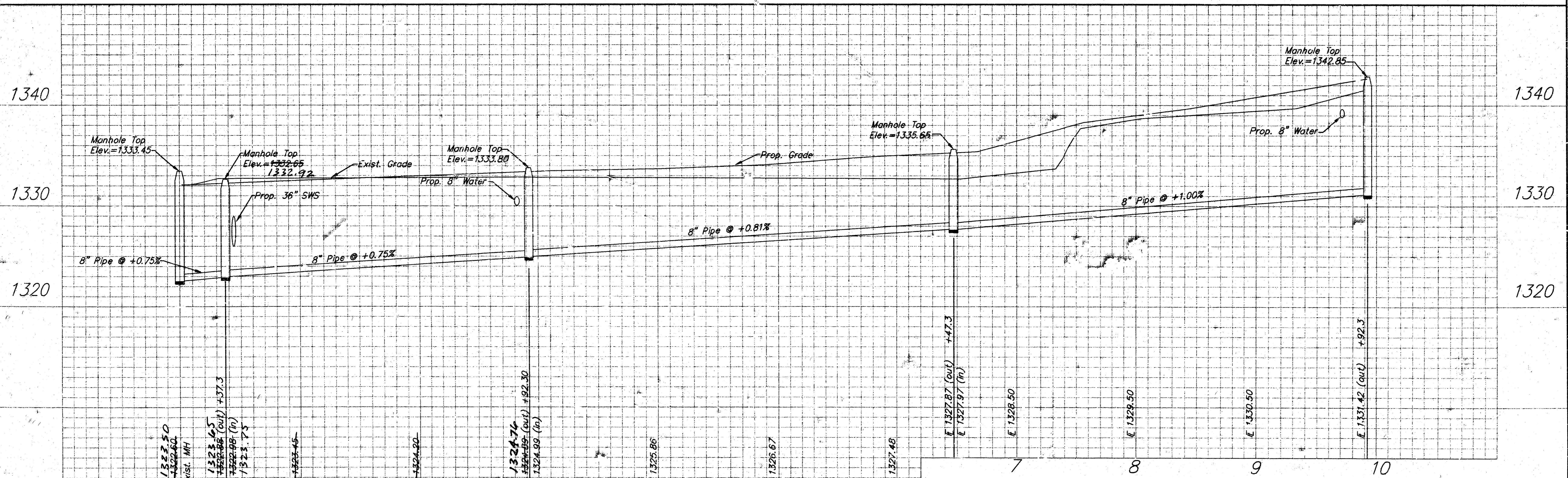
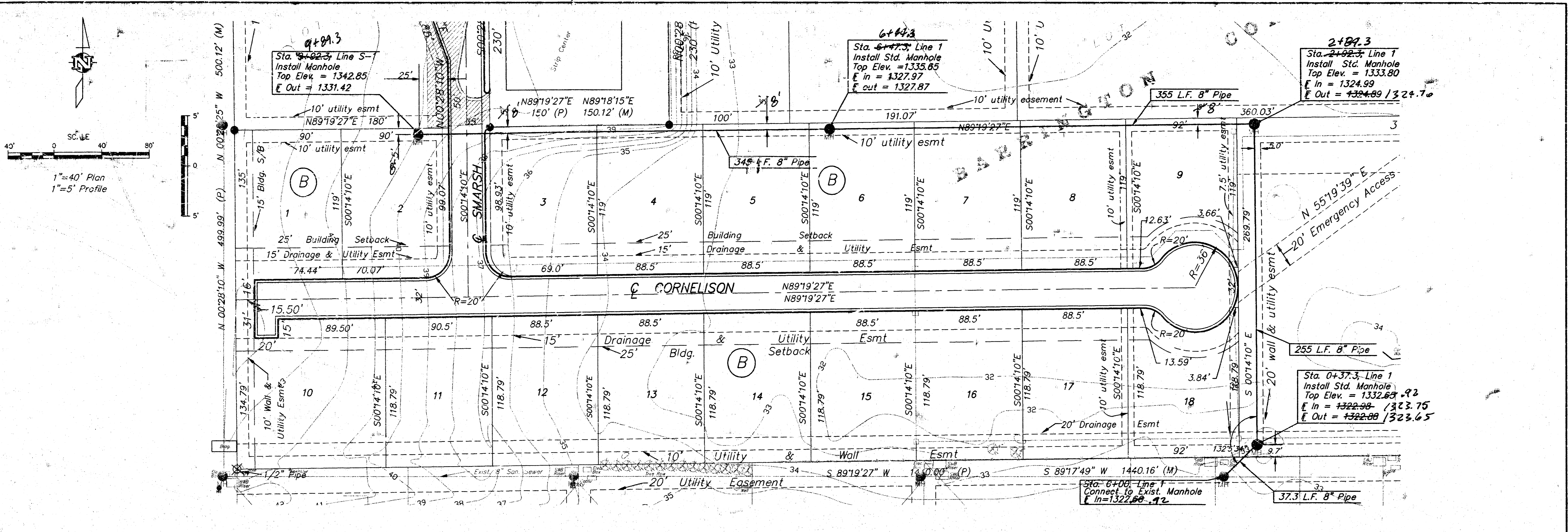


LOCATION MAP



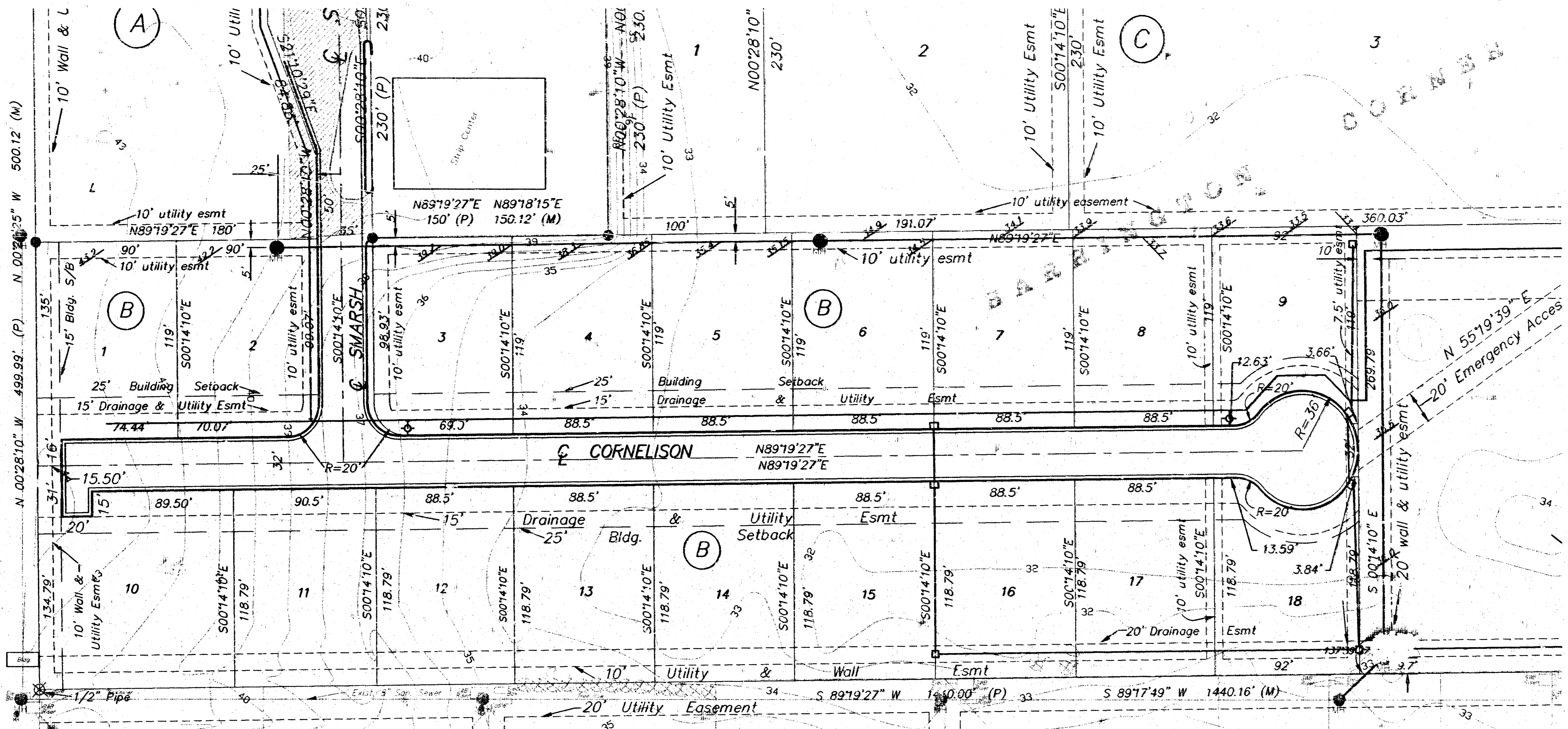
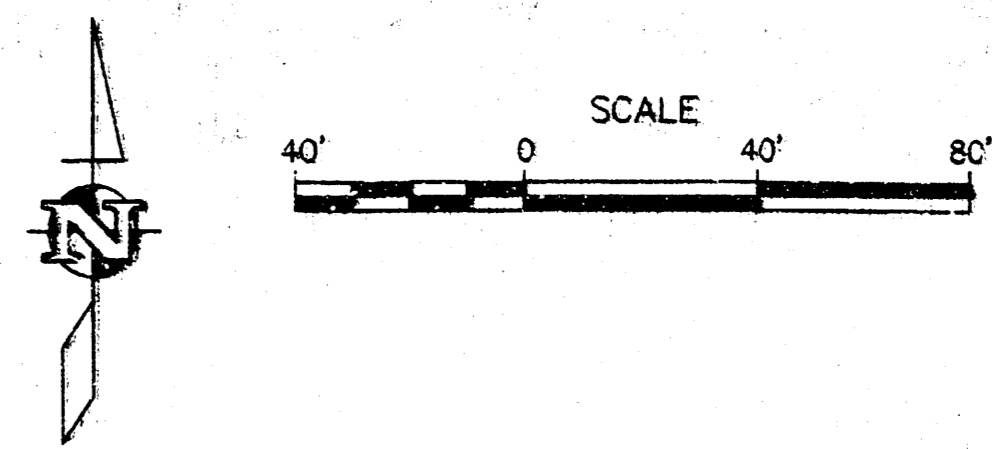
*Booked
P-11
6/10/98
AS BUILT
R. Loomis*

AUSTIN MILLER P.A.
ENGINEERING SERVICES
 254 S. Leora, Suite 210 Wichita, KS 67211
 316/262-1281 fax: 316/262-6773

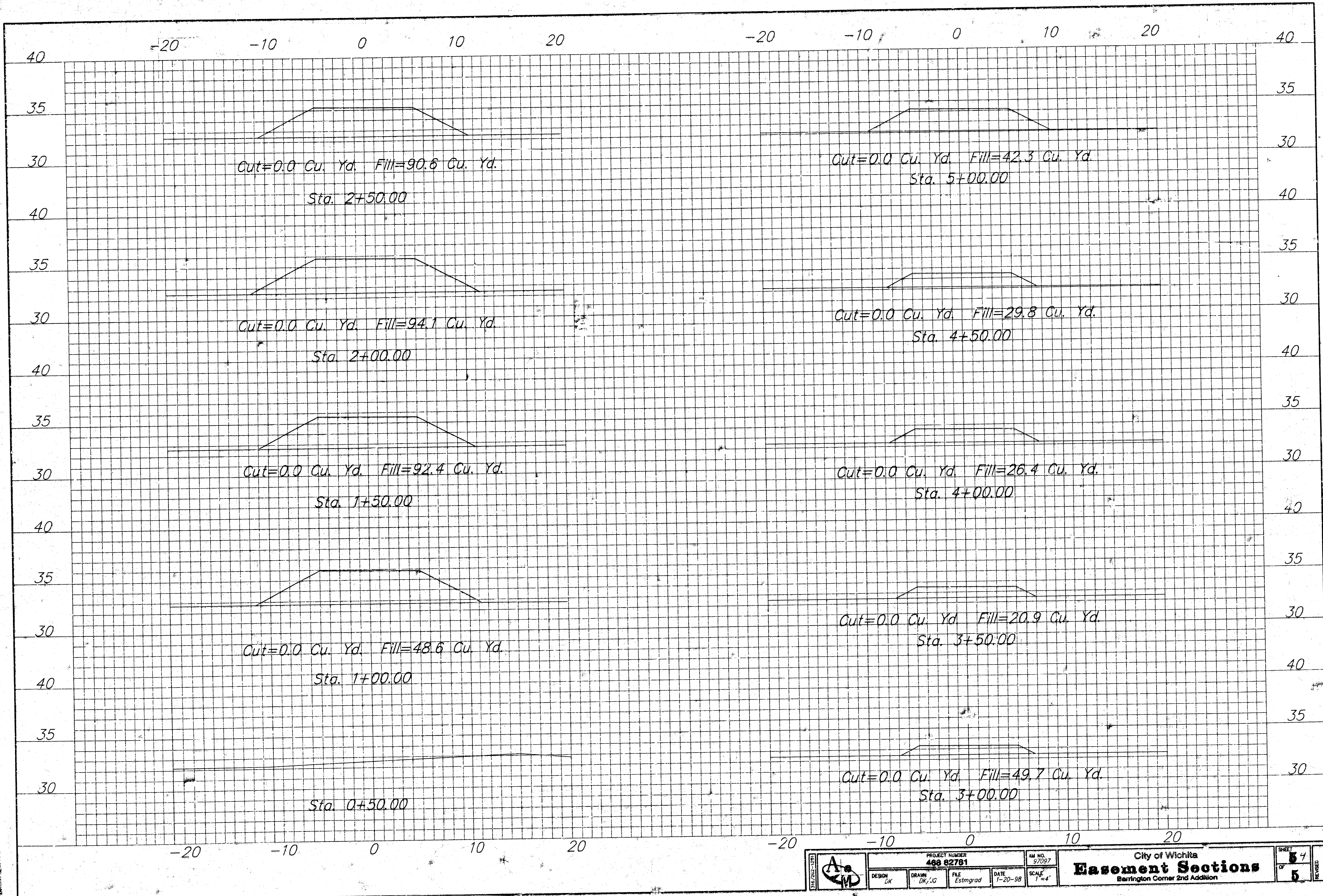


		PROJECT NUMBER 488 82781	PLAN NO. 97097	SHEET 2 OF 5
DESIGN DK	DRAWN DK	FILE SS 1	DATE 12/19/97	SCALE 1"=40'
City of Wichita Line S-1 Barrington Corner 2nd Addition				REVISION 1/20/98

BENCHMARK:
 RR Spike in power pole
 Northeast corner of 21st & Ridge
 Elev. = 1,330.70 MSL



	PROJECT NUMBER 468 82781		AM. NO. 97097	City of Wichita Easement Grading Barrington Corner	SHEET 3 OF 5
	DESIGN DK	DRAWN DK	FILE ESMTGR2		



	PROJECT NUMBER 488 82781		AM NO. 97097	SHEET 64 OF 6
	DESIGN DK	DRAWN DK, JG	FILE Estmgrad	
Easement Sections Berrington Corner 2nd Addition			SCALE 1"=4'	REVISION

