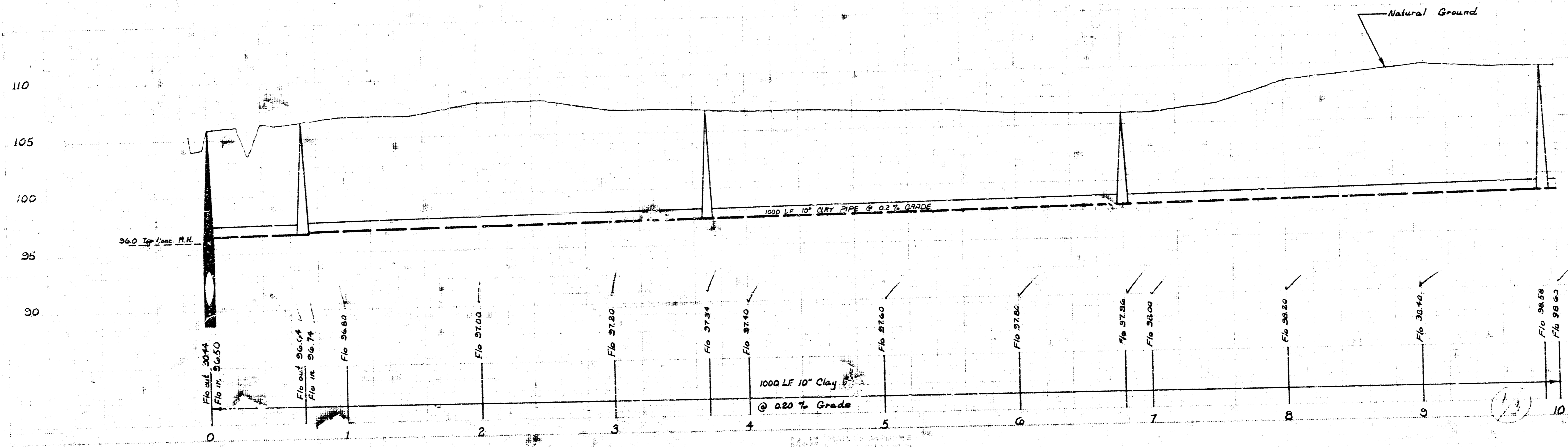
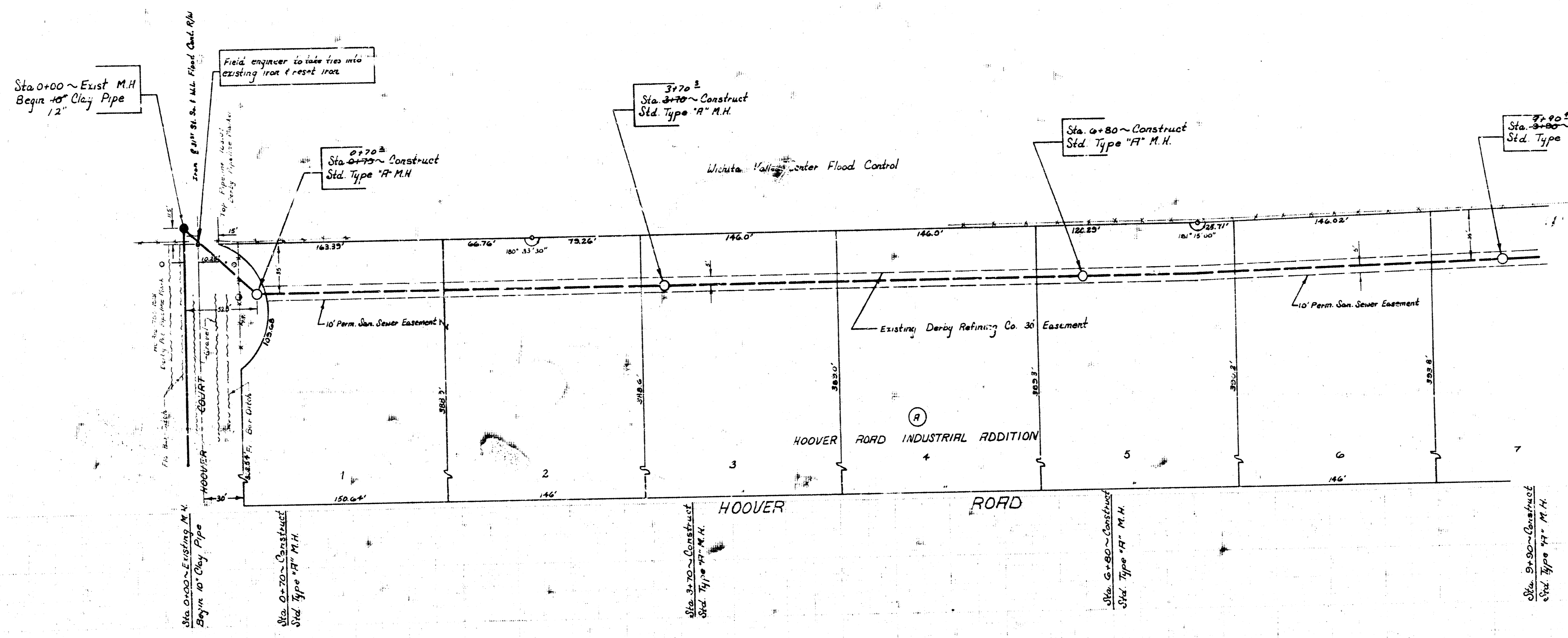


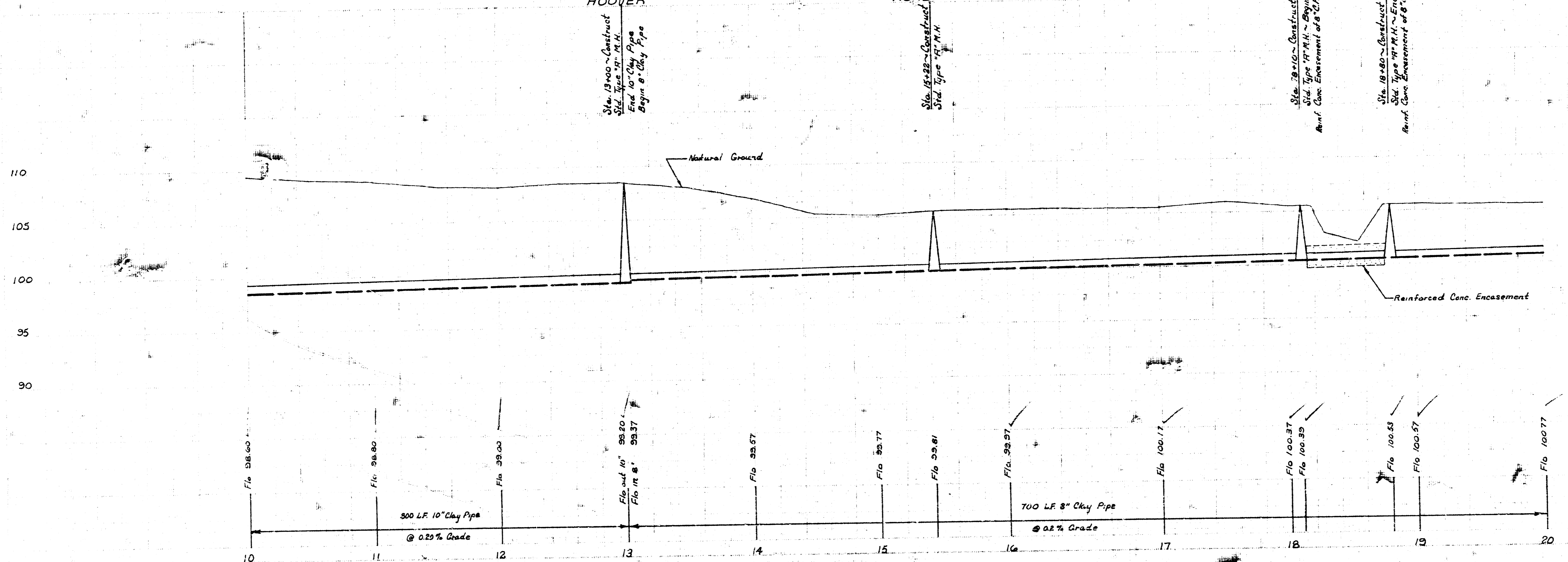
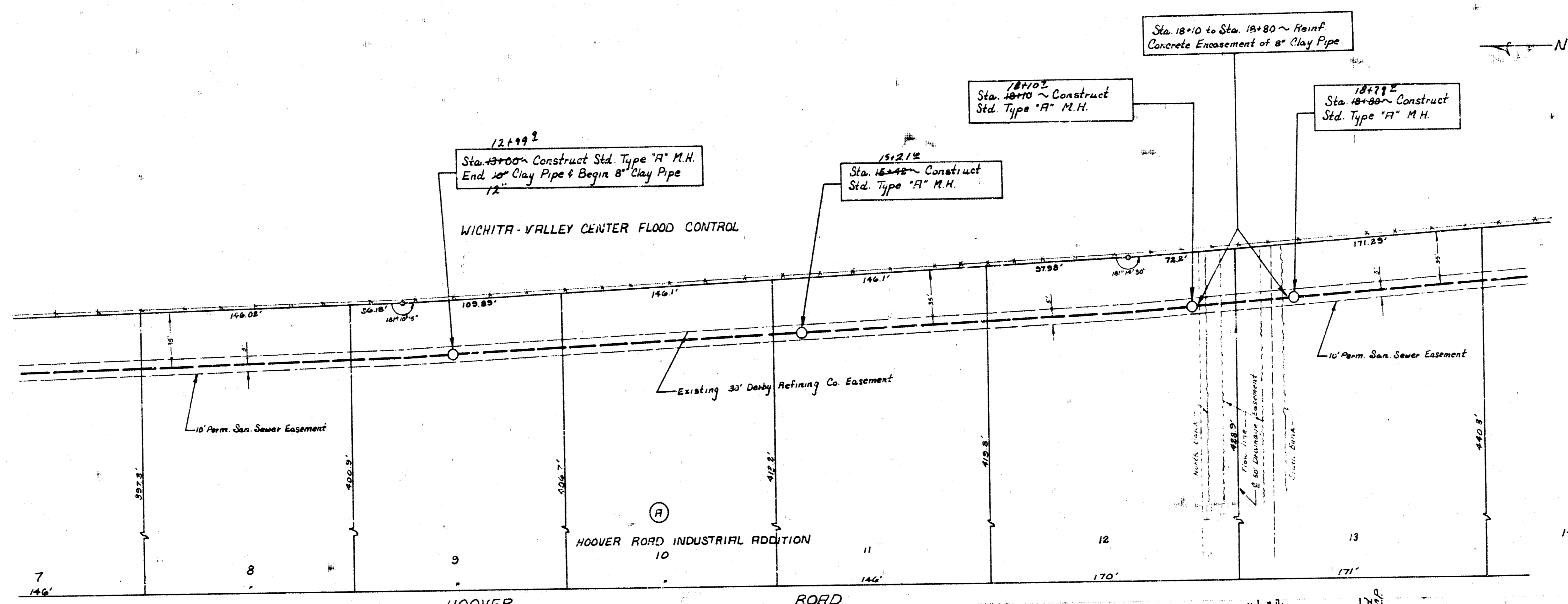
B.M. #1 ~ 106.43 City Std. 31" St. South + Hoover Road 44' E. + 32' N. of @ both
 B.M. #2 ~ 106.965 RR Spike E-face PP W-side Hoover 1/4 mile S. of 31" St. South

Plan Scale ~ 1"=40'
 Profile Scale ~ Horiz. 1"=40'
 ~ Vert. 1"=5'



As Built Final Plans SS-AK-710
 LAT. 42, S.W.I.
 CITY OF WICHITA
 R.W. LINN-CITY ENGINEER
 DATE NOV. 1970 PROJ. NO. BHK503054

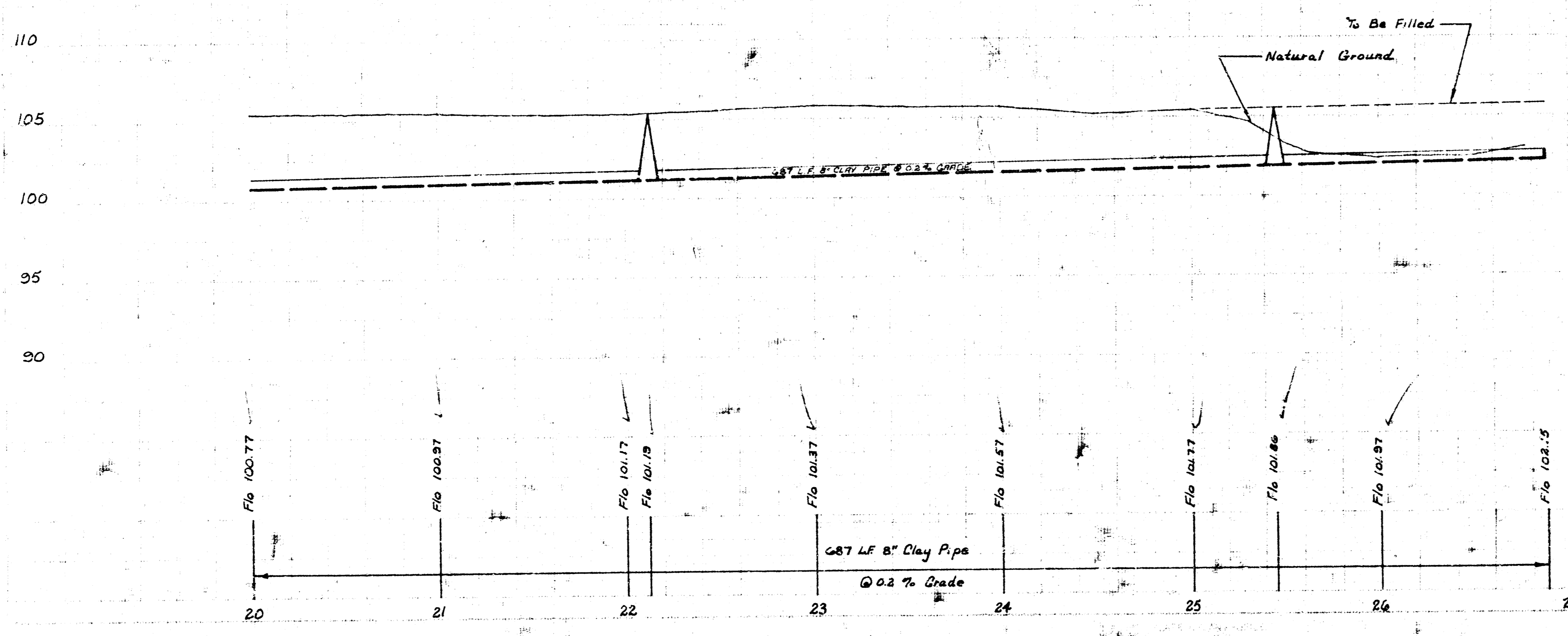
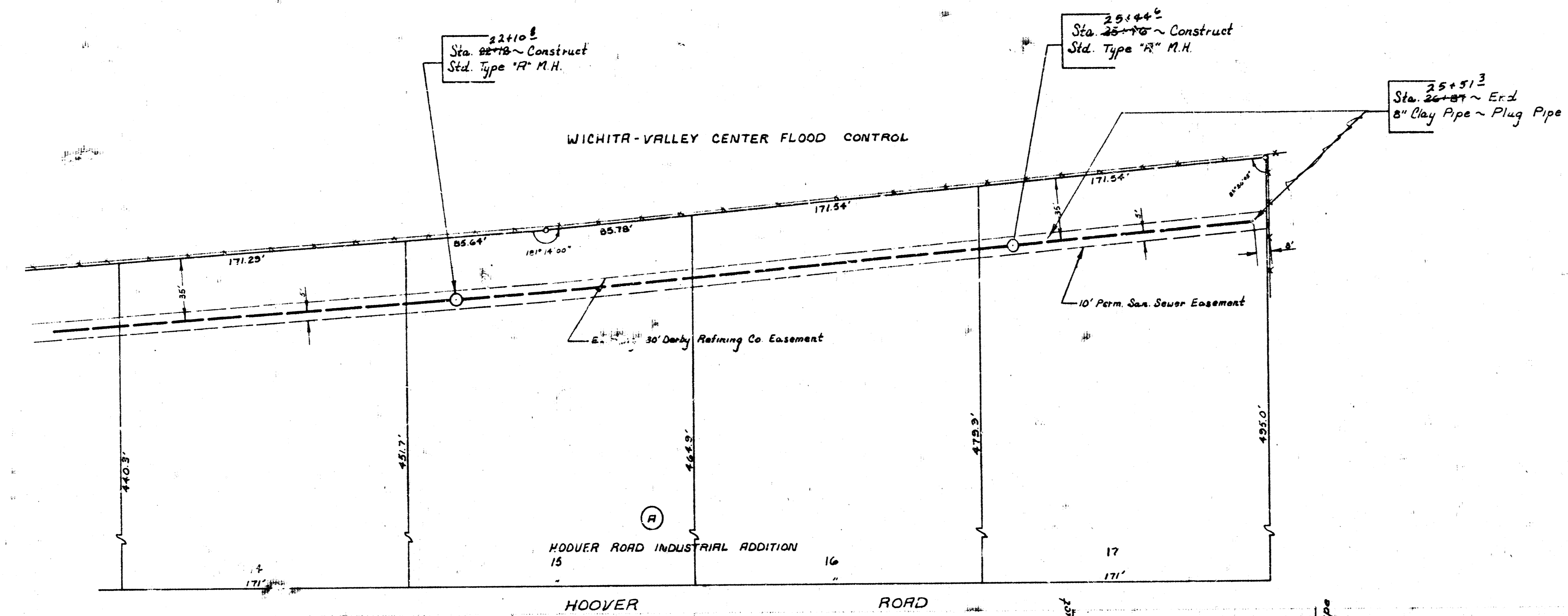
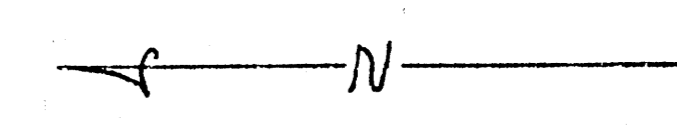
CLK
TYPE



2/3

LAT: 42, SWI
BHHB 503054

DATE
NO.



LAT 42, S11
BHK 503034

14 e 1 (14)