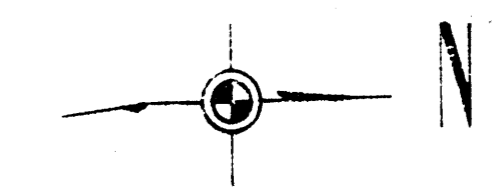
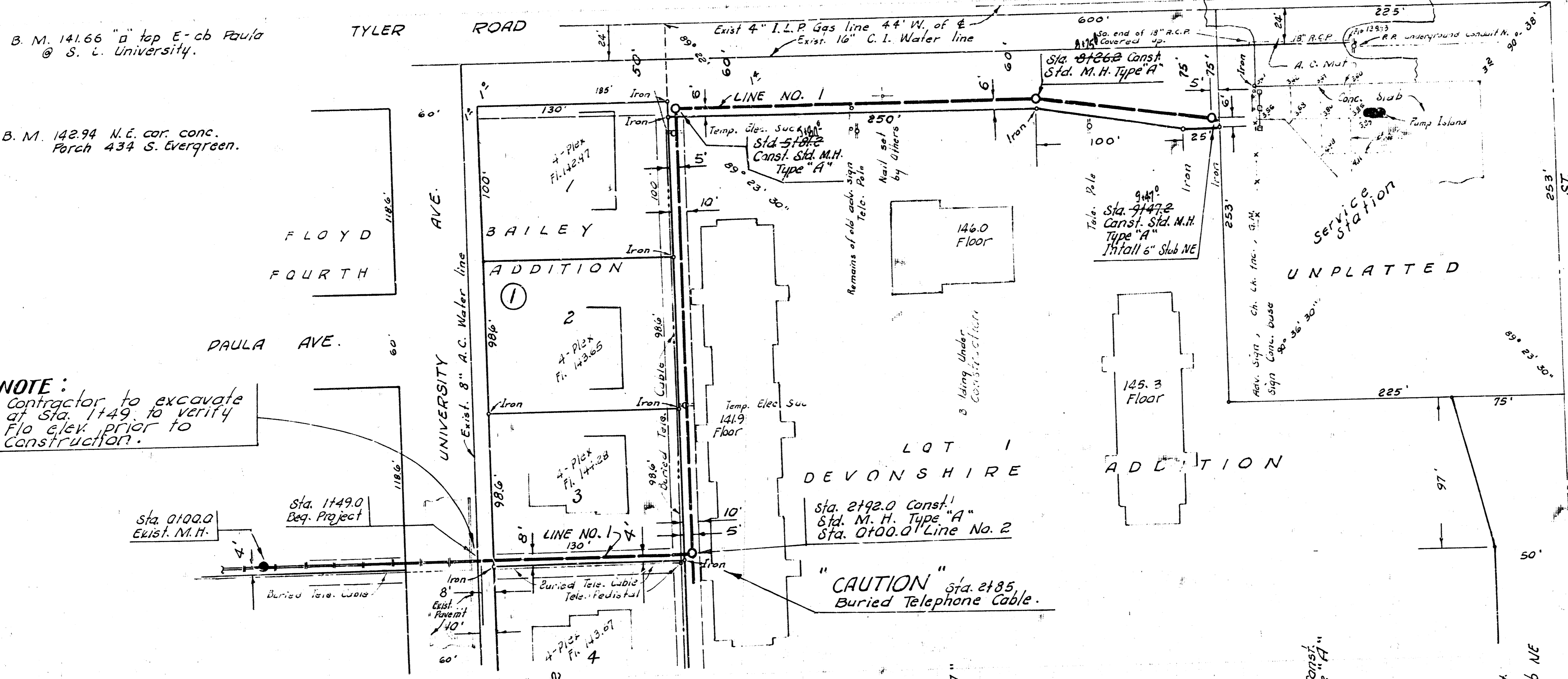


B. M. 141.66 "d" top E. cb Paula
@ S. C. University.

B. M. 142.94 N.E. cor. conc.
Porch 434 S. Evergreen.

NOTE:
Contractor to excavate
at Sta. 1149.0 to verify
Flo elev. prior to
construction.

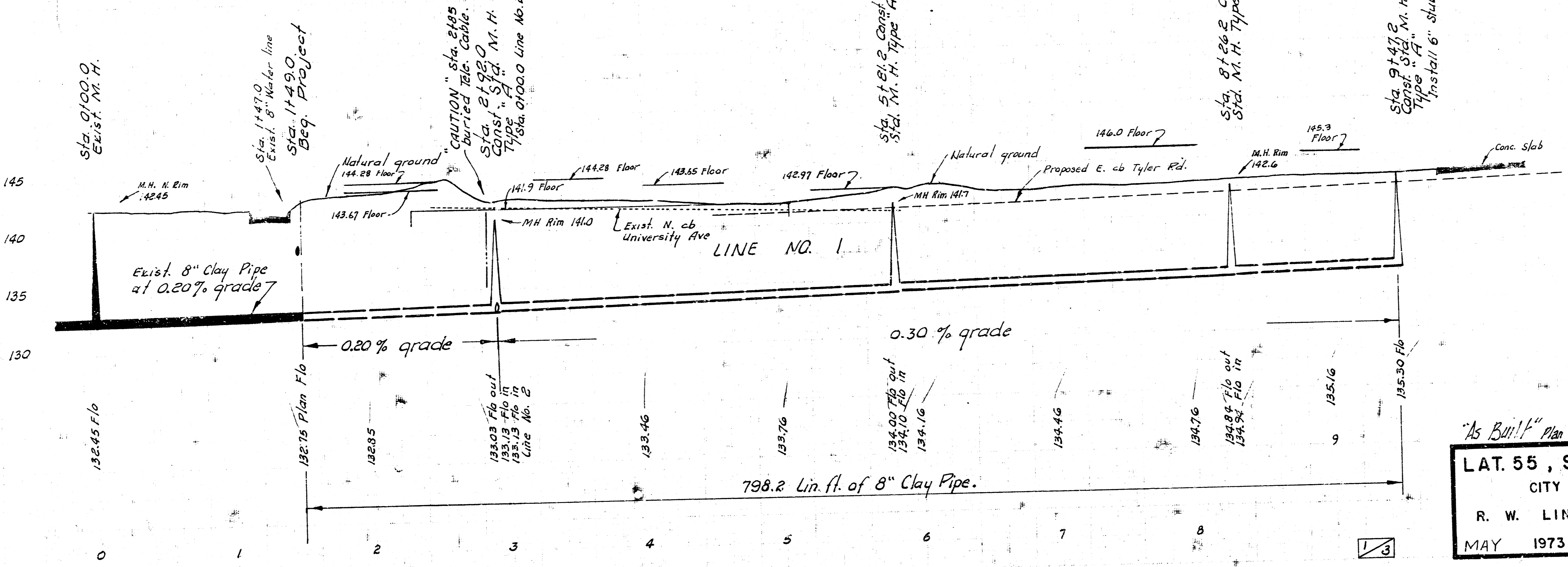
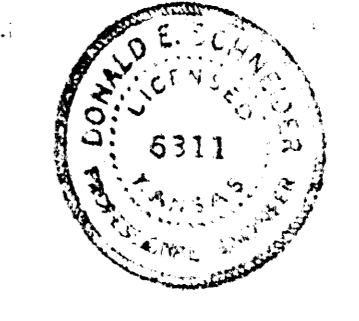
126



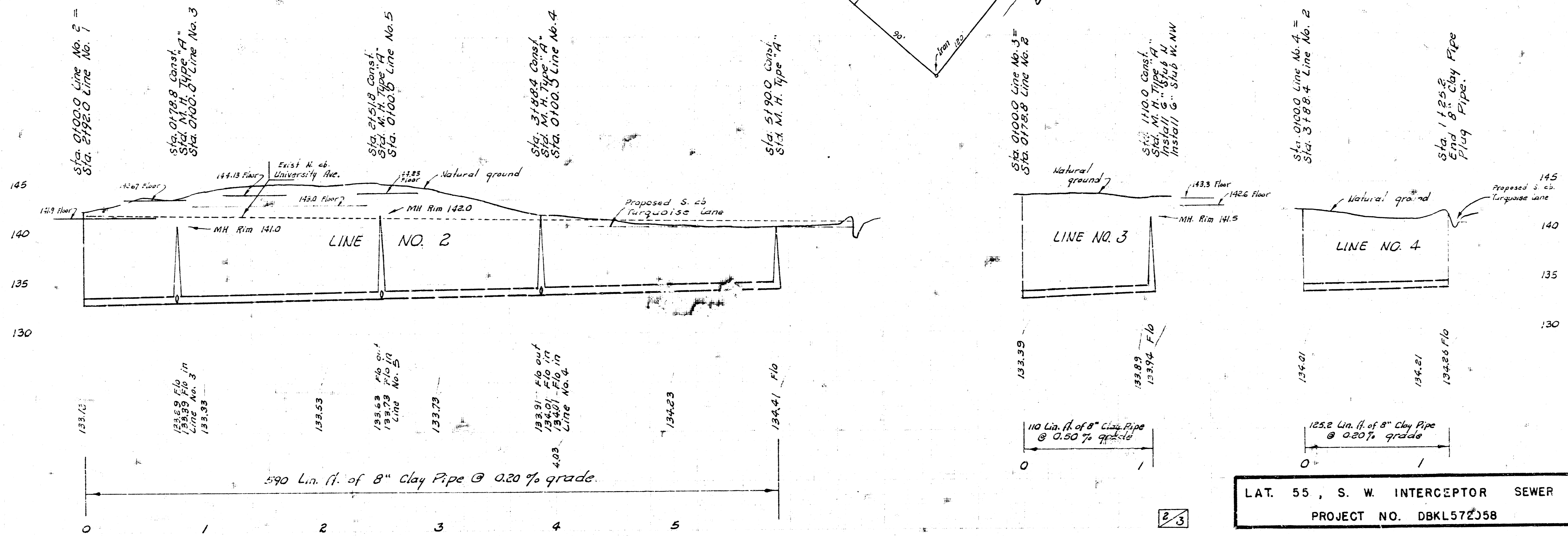
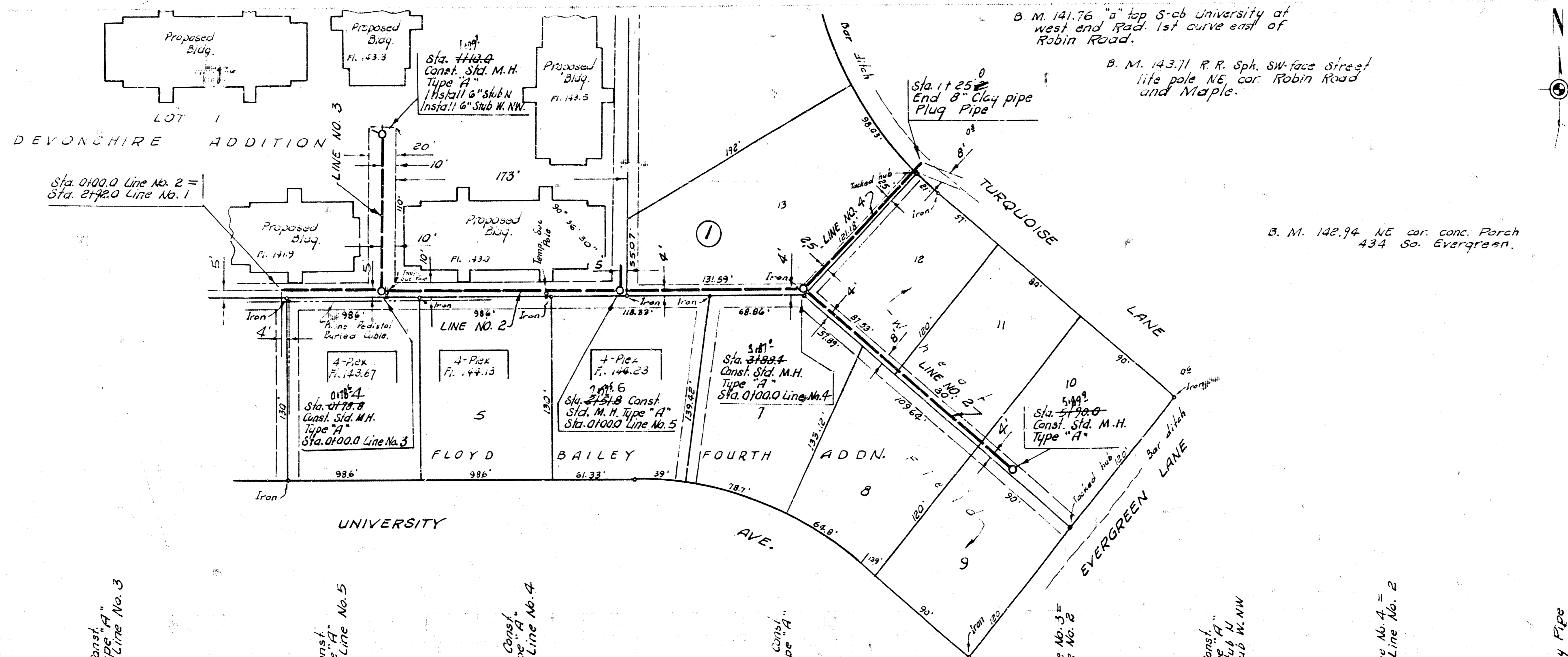
Plan Scale 1" = 40'
Profile Scale 1" = 40' Horiz.
1" = 5' Vert.

- B. M. 143.53 Std. 34.2' E. and 27.2'
S. of E. Tyler and Maple.
- B. M. 139.31, R. R. Spk. E. face, P. P. S. W.
cor. Tyler Rd. & University.
- B. M. 141.76 "d" Top S-cb University
at West end of Pad 1st curve
east of Robin Road.

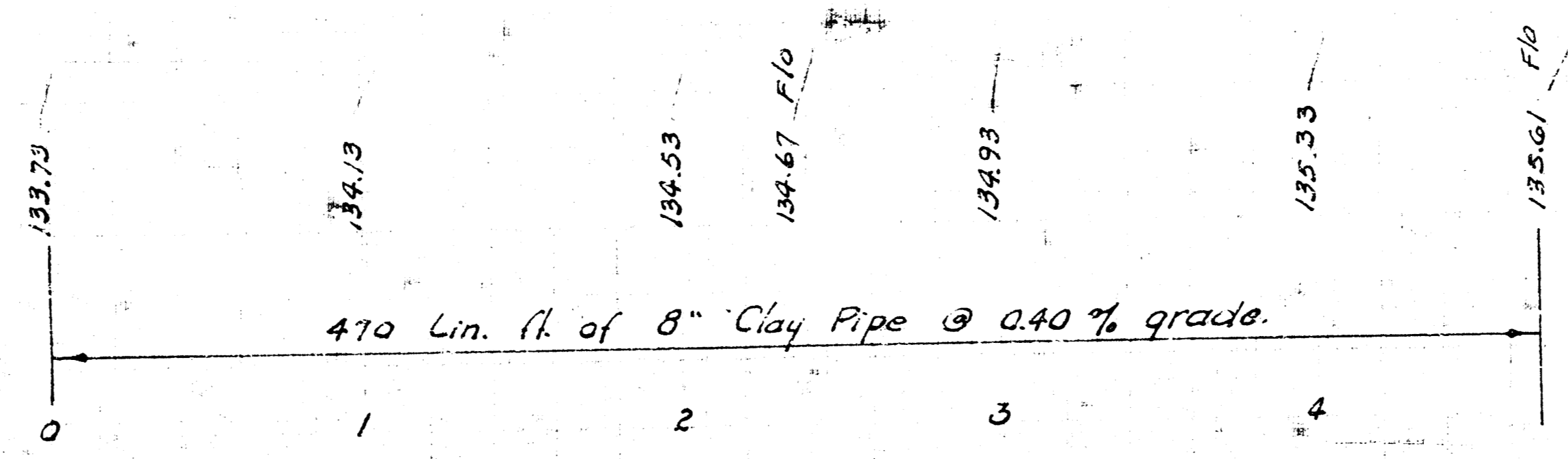
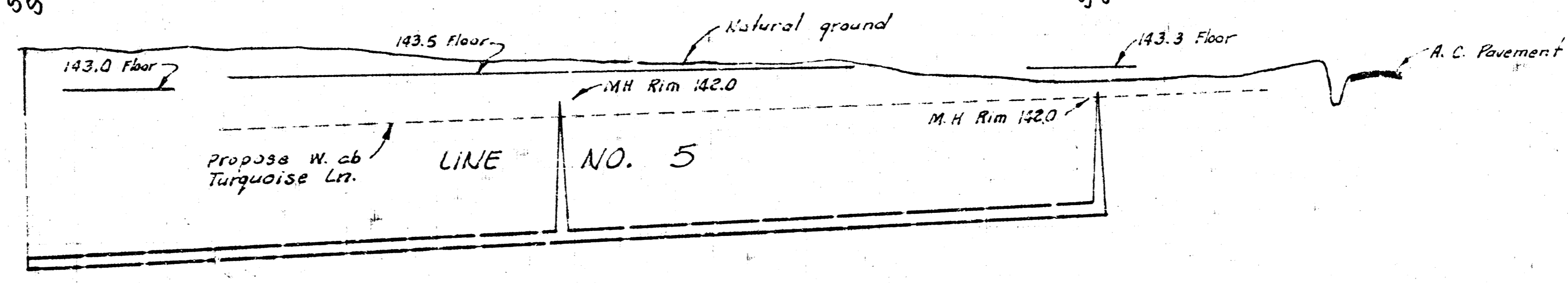
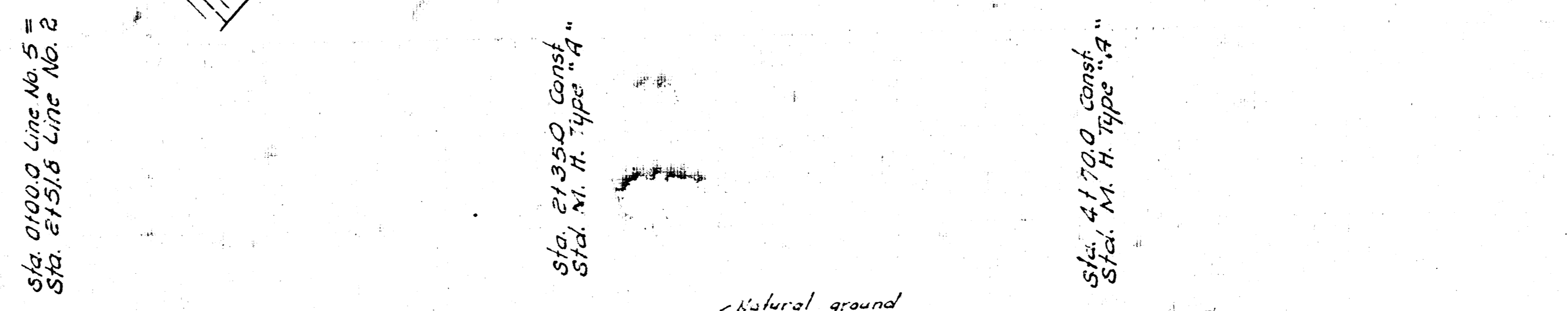
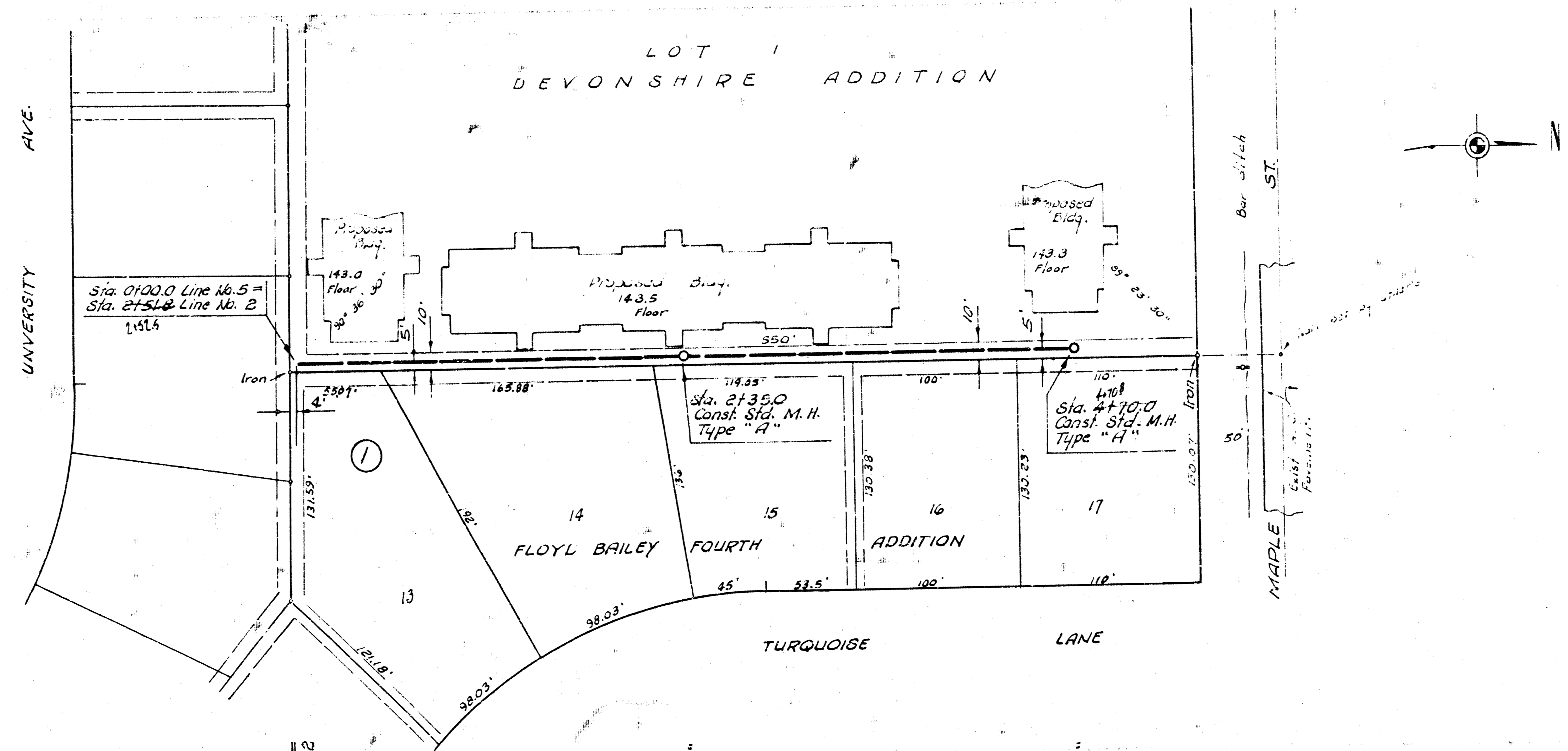
CAUTION
UNDERGROUND
UTILITIES



"As Built" Plan from K-108
LAT. 55, S. W. INTERCEPTOR SEWER
CITY OF WICHITA, KANSAS
R. W. LINN — CITY ENGINEER
MAY 1973 PROJECT NO. DBKL 572058



LAT. 55, S. W. INTERCEPTOR SEWER
PROJECT NO. DBKL57258



LAT. 55 S. W. INTERCEPTOR SEWER
PROJECT NO. DBKL572058

145
140
135
130

145
140
135
130