

Part 2

014-102

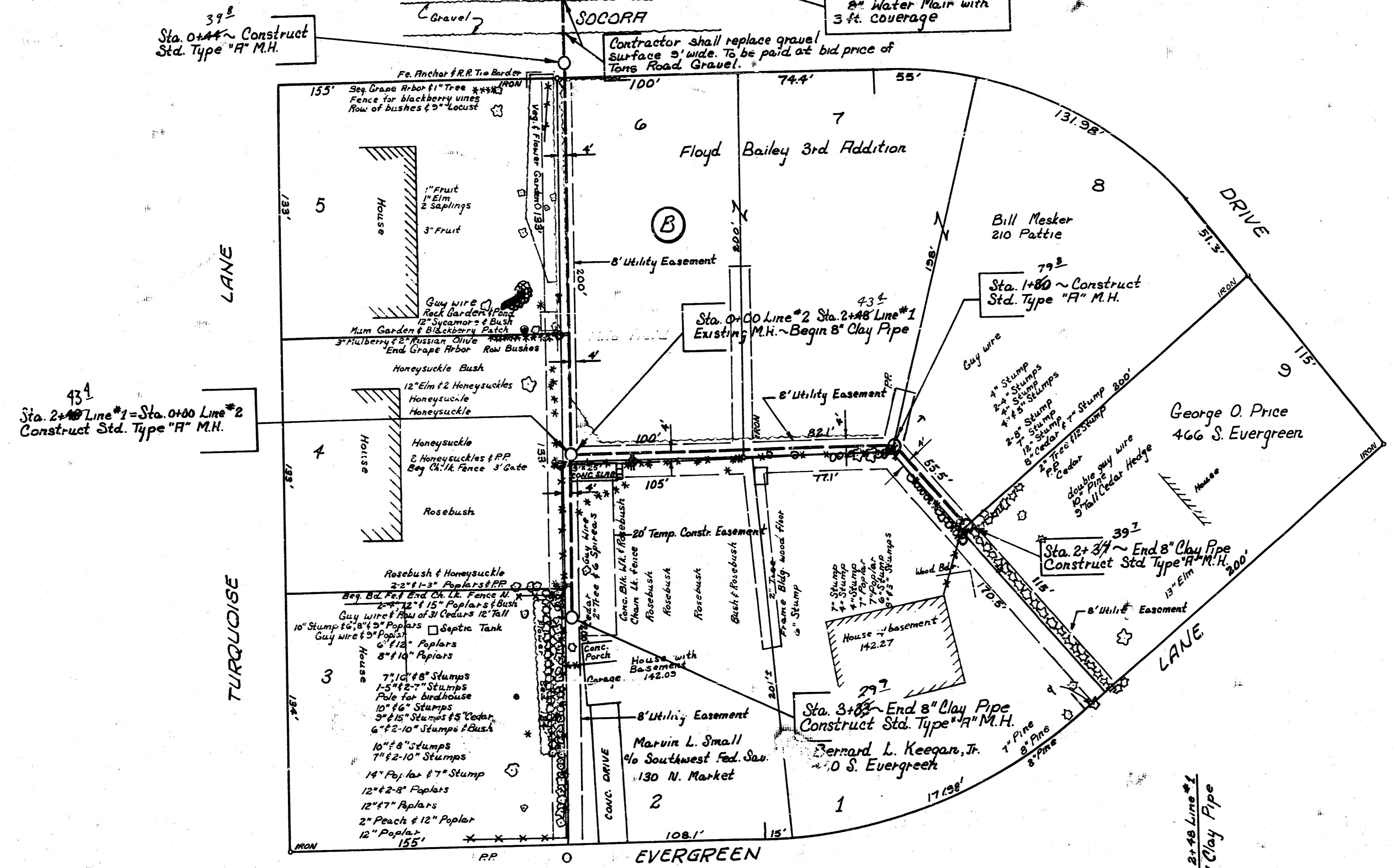
Sta. 0+00 ~ Existing 8" Clay Pipe
Begin 8" Clay Pipe

Sta. 0+44 ~ Construct
Std. Type "A" M.H.

Caution:
2" intermed. low pressure gas line with 30" coverage
Contact Ray Doherty with Gas Service Co. prior to
excavation. Tele. 263-7511, ext. 274

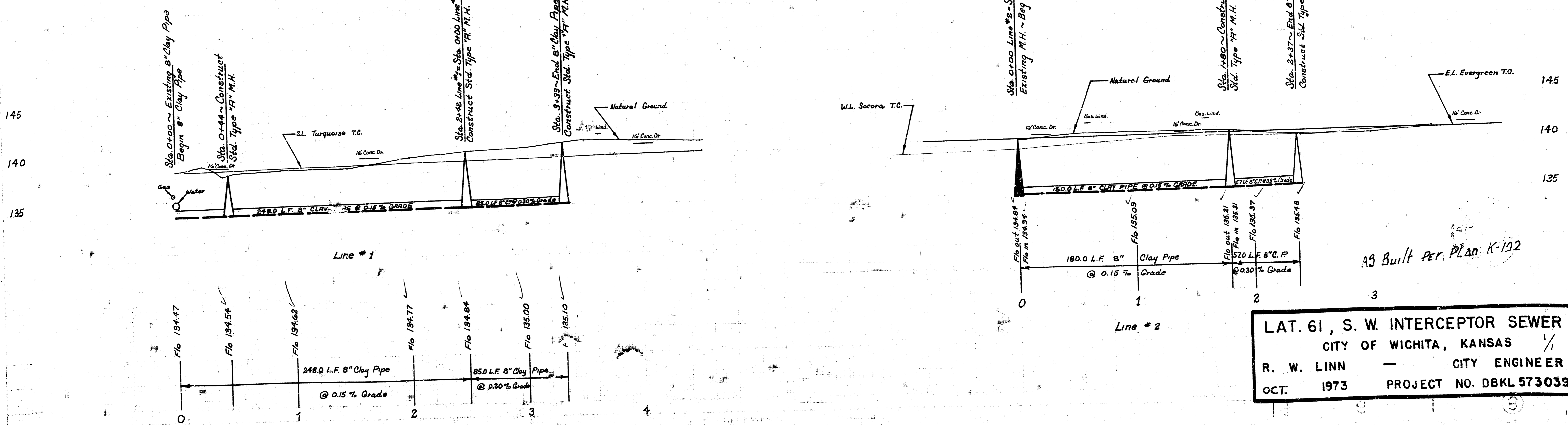
Caution:
2" Water Main with
3 ft. coverage

Contractor shall replace gravel
surface 3' wide. To be paid at bid price of
Tons Road Gravel.



Plan Scale 1" = 40'
Profile Scale 1" = 4' Vert.

B.M. 142.94 ~ NE. cor. conc. porch 434 So. Evergreen



LAT. 61, S. W. INTERCEPTOR SEWER
CITY OF WICHITA, KANSAS
R. W. LINN — CITY ENGINEER
OCT. 1973 PROJECT NO. DBKL 573039

FILMED FROM THE BEST
AVAILABLE COPY