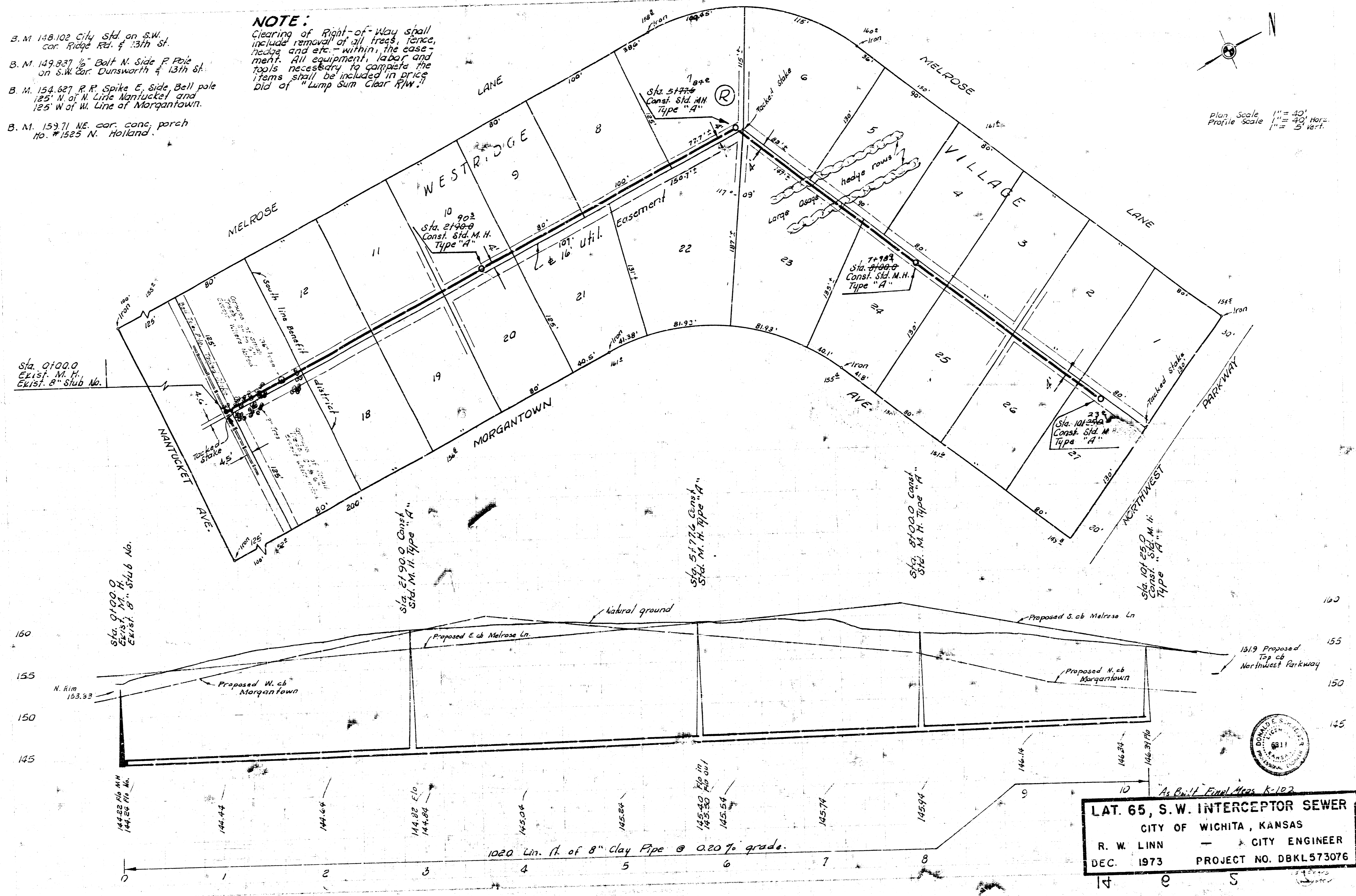


- B. M. 148.102 City Std. on S.W. cor. Ridge Rd. & 13th St.
- B. M. 149.837 1/2" Bolt N. Side P. Pole on S.W. Cor. Dunsmuir & 13th St.
- B. M. 154.627 R.R. Spike E. Side, Bell pole 125' N. of W. Line Nantucket and 125' W. of W. Line of Morgantown.
- B. M. 159.71 NE. cor. conc. porch No. #1525 N. Holland.

NOTE:
 Clearing of Right-of-Way shall include removal of all trees, fence, hedge and etc. within the easement. All equipment, labor and tools necessary to complete the items shall be included in price bid of "Lump Sum Clear R/W".



LAT. 65, S.W. INTERCEPTOR SEWER
 CITY OF WICHITA, KANSAS
 R. W. LINN — CITY ENGINEER
 DEC. 1973 PROJECT NO. DBKL573076

