

LAT 70 SOUTHWEST INTERCEPTOR CITY OF WICHITA, KANSAS

R. W. LINN _____ CITY ENGINEER

PROJECT NUMBER DBKL574067

GENERAL NOTES

1. LINE NO. 1 IS TO BE COMPLETED AT THE EARLIEST POSSIBLE DATE SUCH THAT SEWER SERVICE WILL BE AVAILABLE FOR THE NURSING HOME DEVELOPMENT. CONTRACTOR SHALL VERIFY ELEVATION OF BUILDING SEWER AT STATION 17+63.1 ON LINE NO. 1 PRIOR TO INSTALLING ANY PIPE ON THIS PROJECT.
2. EXCAVATED MATERIAL SHALL BE USED AS BACKFILL FROM STATION 0+00 TO 2+00 ON LINE NO. 1 AND FROM STATION 3+43.5 TO 4+90.0 ON LINE NO. 2. EXCAVATED MATERIAL SHALL BE COMPACTED TO A MINIMUM DENSITY OF 90% OF STANDARD DENSITY.
3. GRASSED AREAS DISTURBED BETWEEN THE LIMITS OF STATION 0+00 TO 2+00 ON LINE NO. 1 SHALL BE SEEDED AND MULCHED. SEED SHALL BE APPLIED AT A RATE OF 250 LBS. TO THE ACRE.

MILES LAKEWOOD VILLAGE SECOND ADDITION

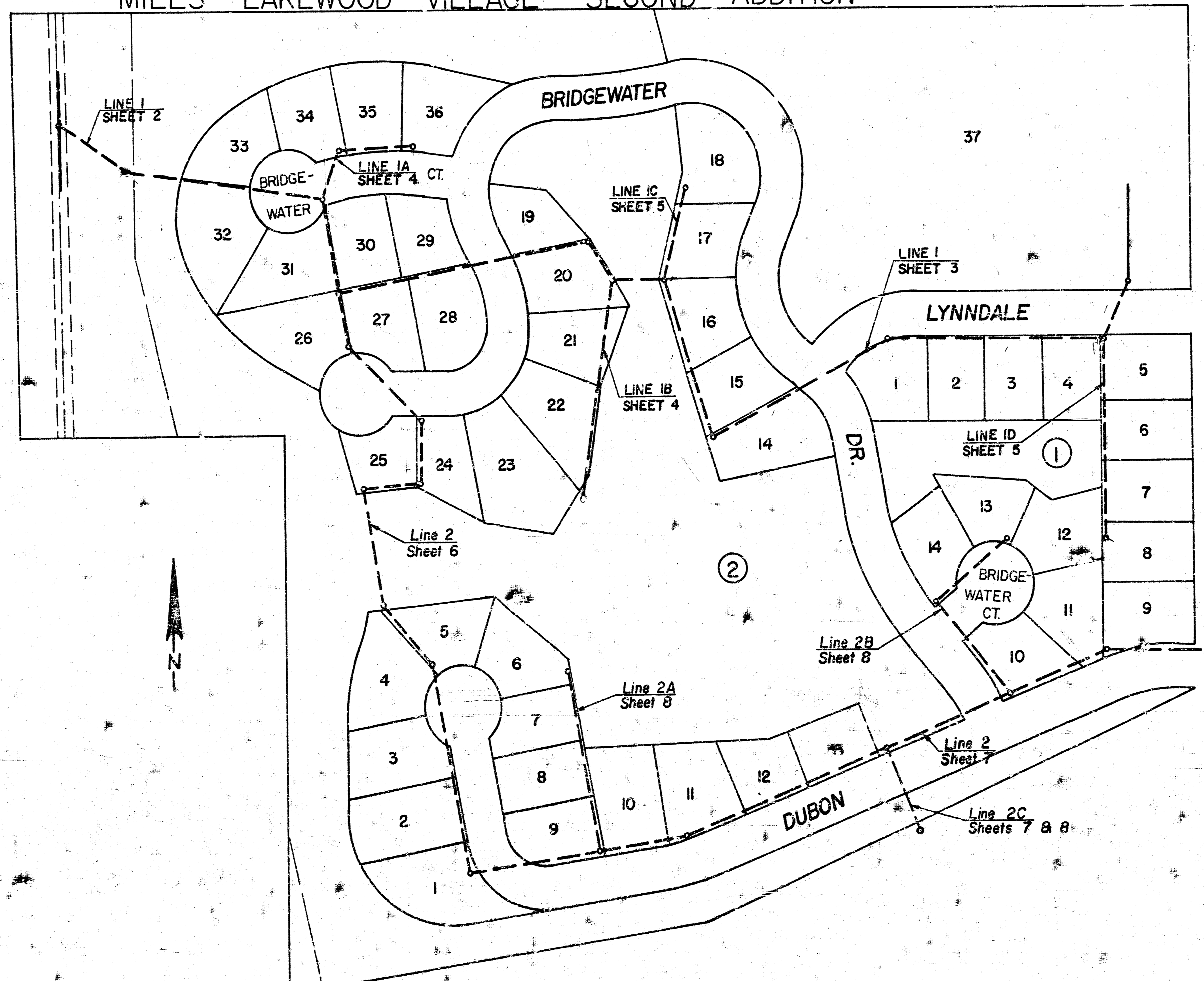
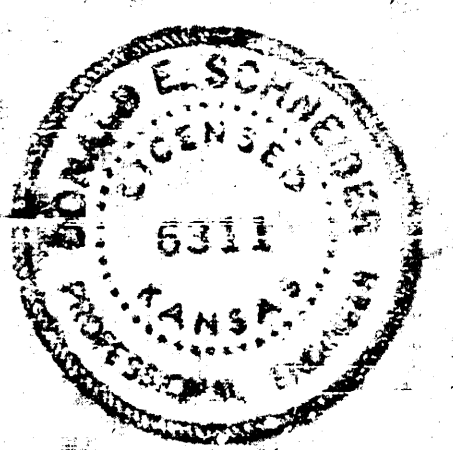


TABLE OF CONTENTS

Line 1	Sheets 2 & 3
Line 1A	Sheet 4
Line 1B	Sheet 4
Line 1C	Sheet 5
Line 1D	Sheet 5
Line 2	Sheet 6 & 7
Line 2A	Sheet 8
Line 2B	Sheet 8
Line 2C	Sheets 7 & 8
Detail Of Manhole Connection	Sheet 9

As built 3-14-78



BM 132.34 City Std. Disc 71.5' S.W. of center concrete crossover U.S. 54 highway and 135' due west of E.L. of Seville extended.
 BM 125.49 "□" cut in concrete at center N. end covered bridge in Miles Lakewood Village 2nd. Addn.

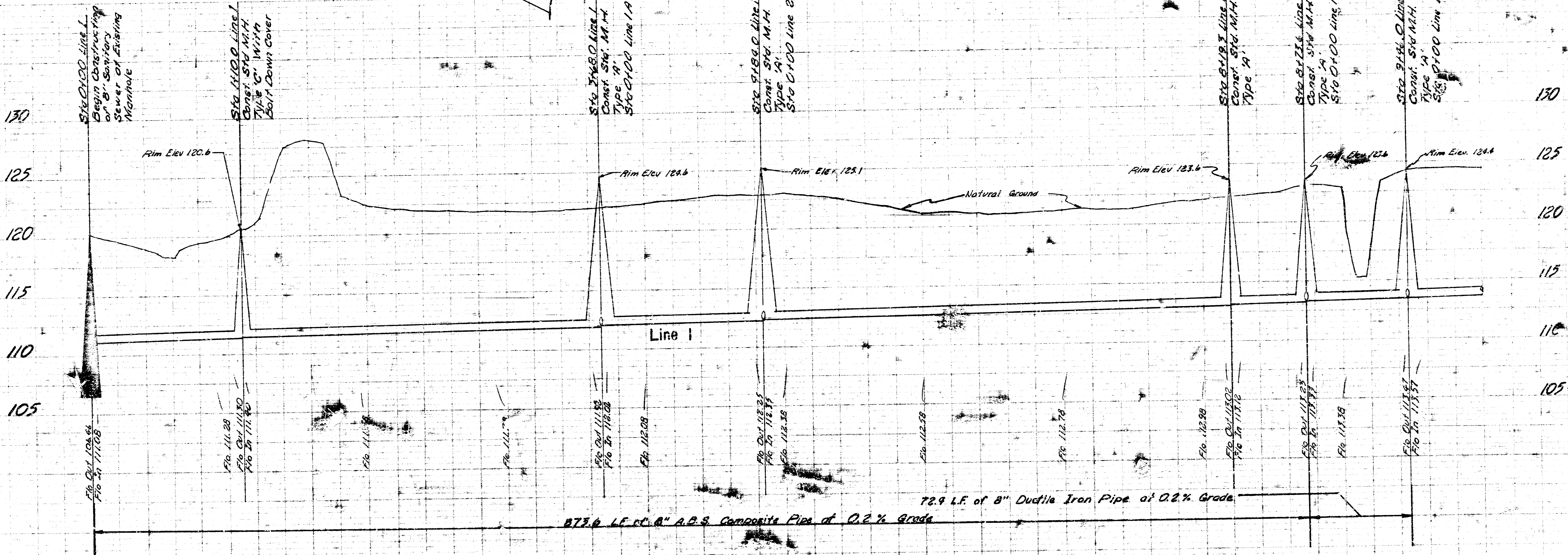
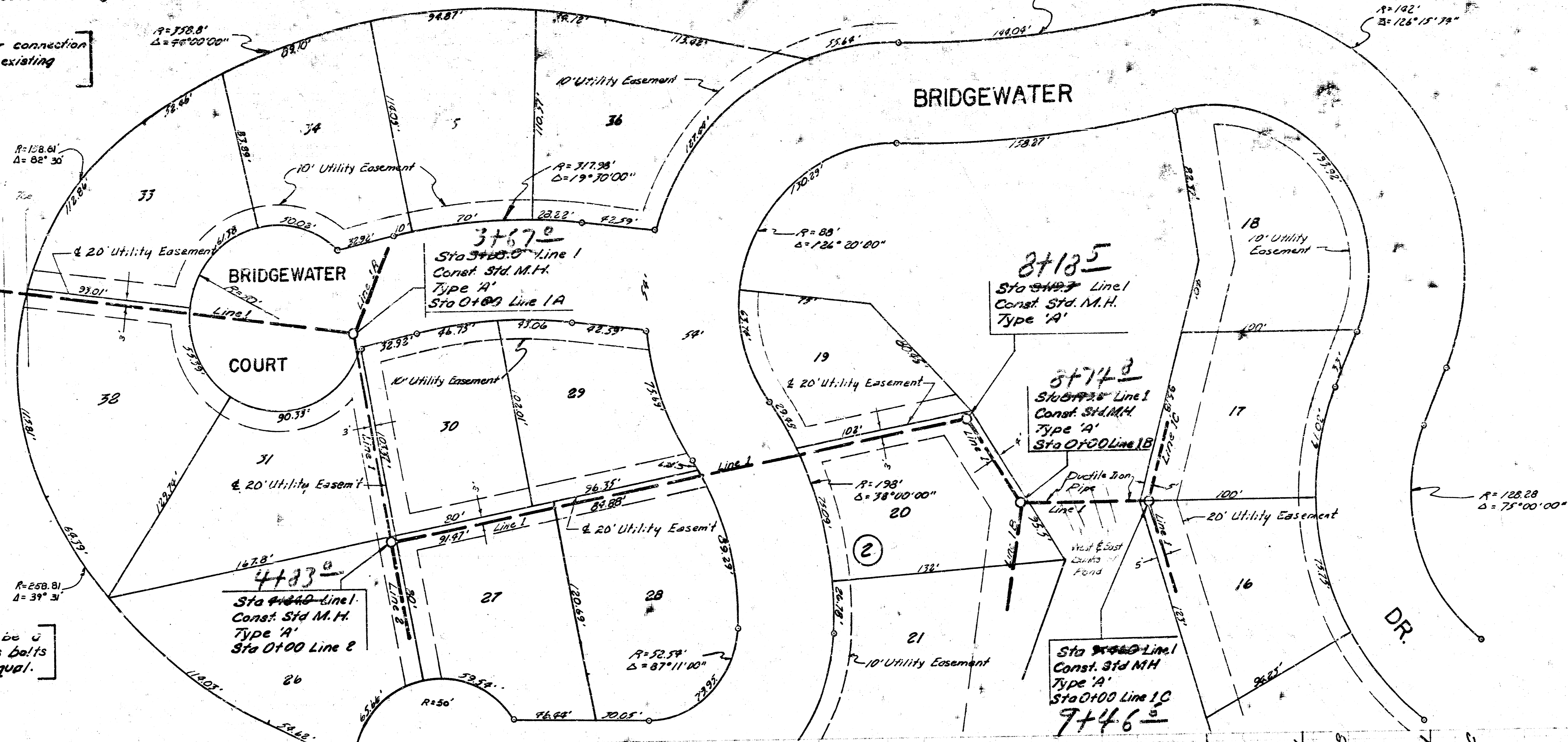
Plan Scale: 1" = 40'
 Profile Scale: 1" = 40' Horz.
 1" = 5' Vert.

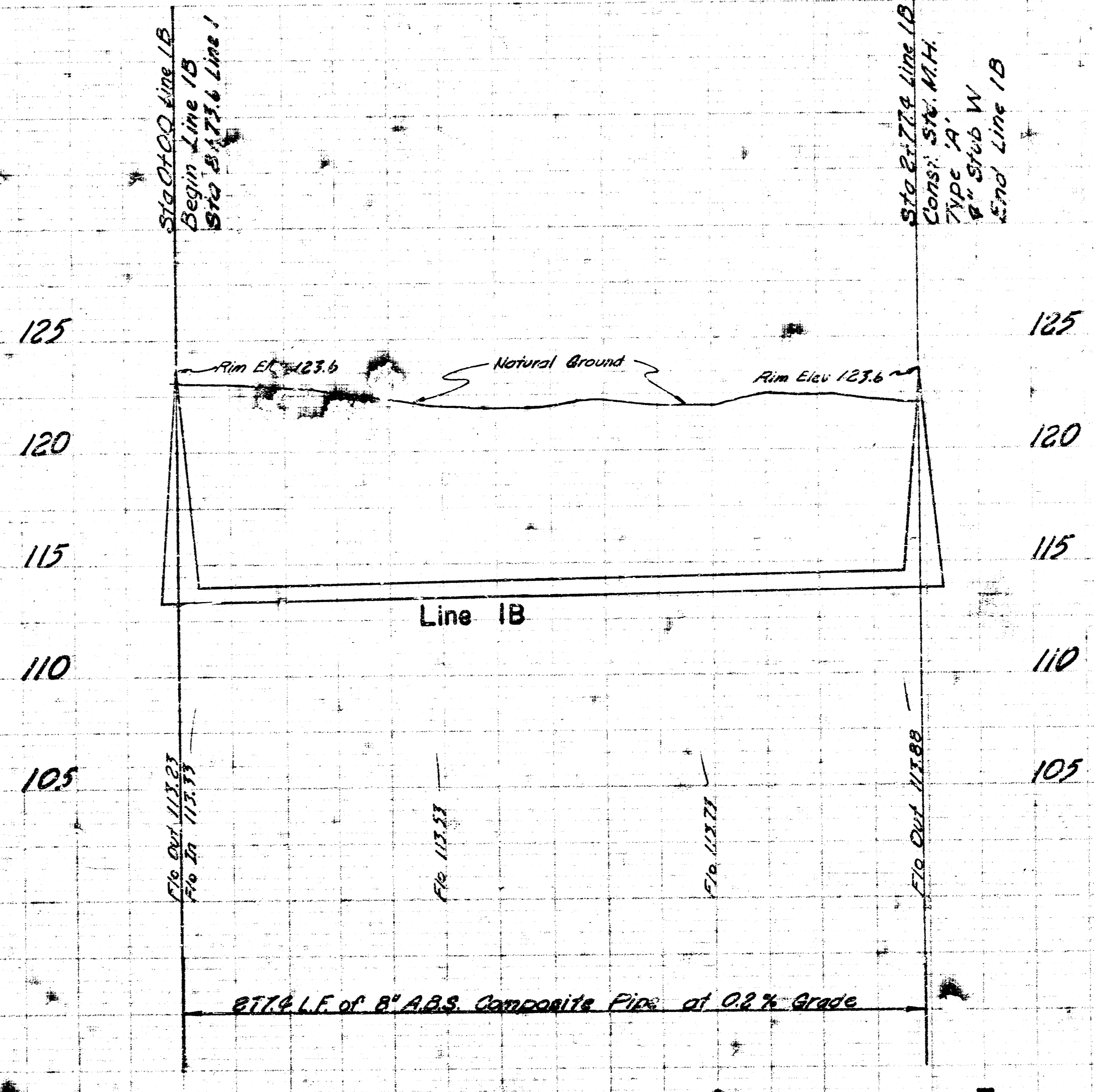
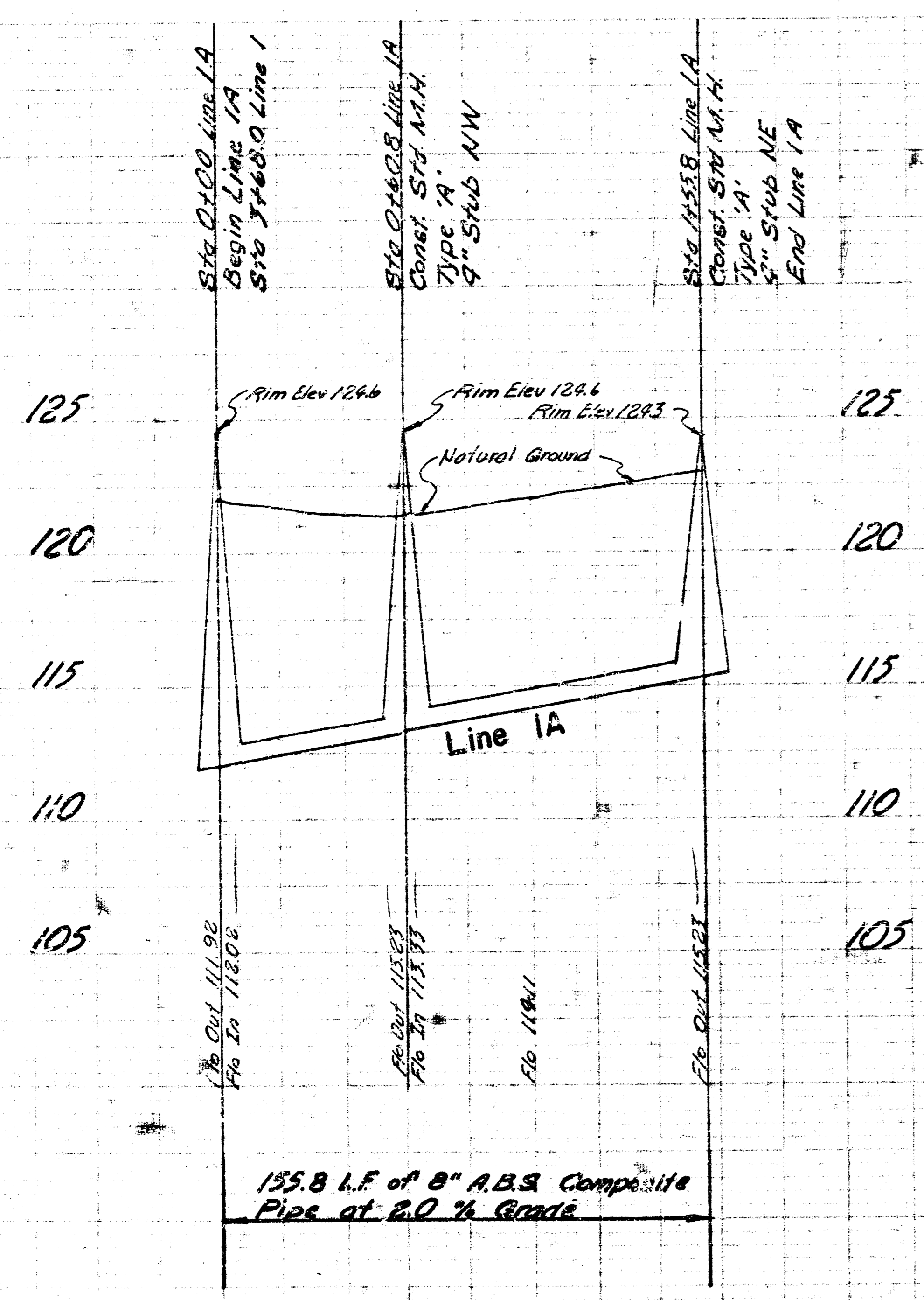
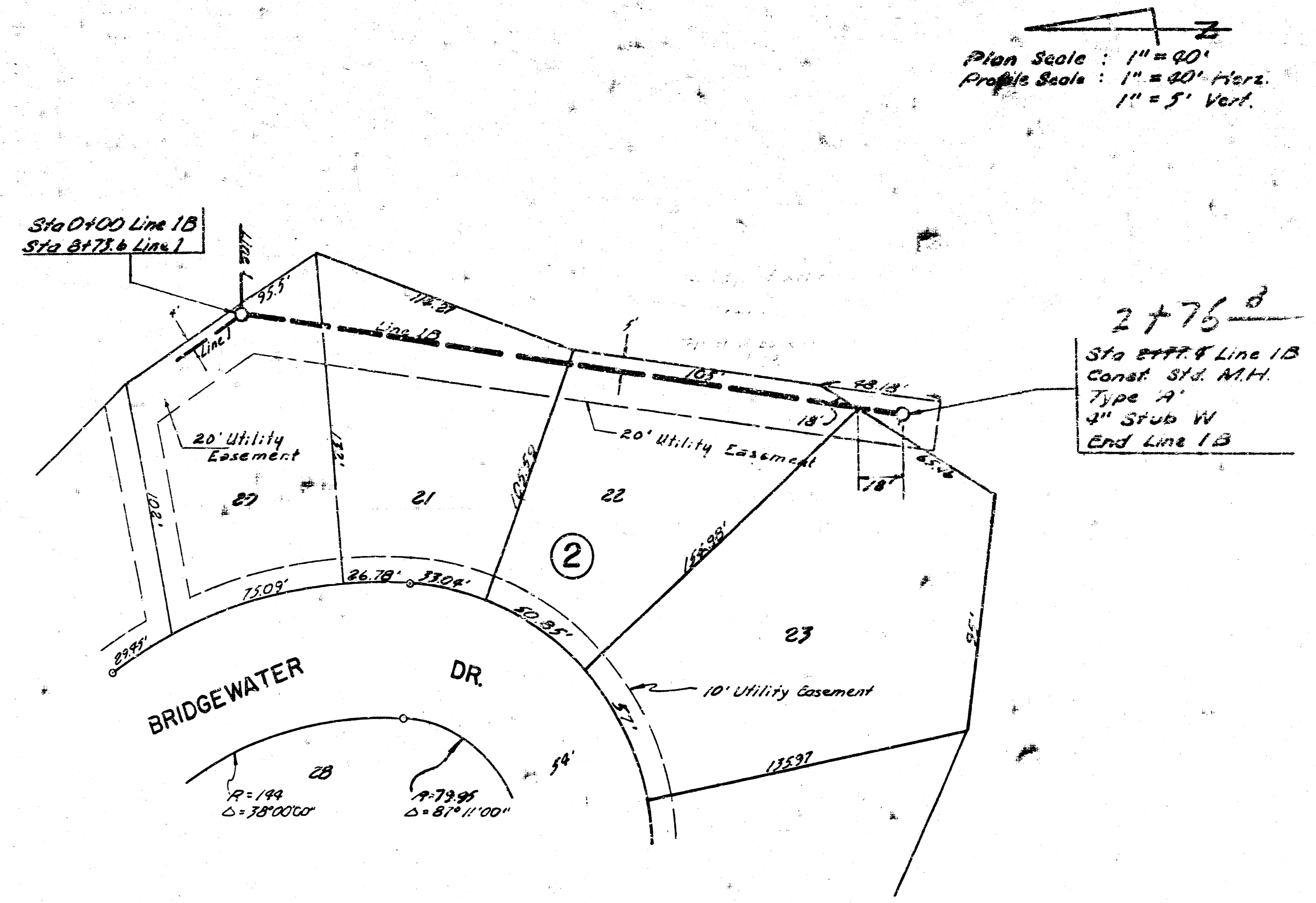
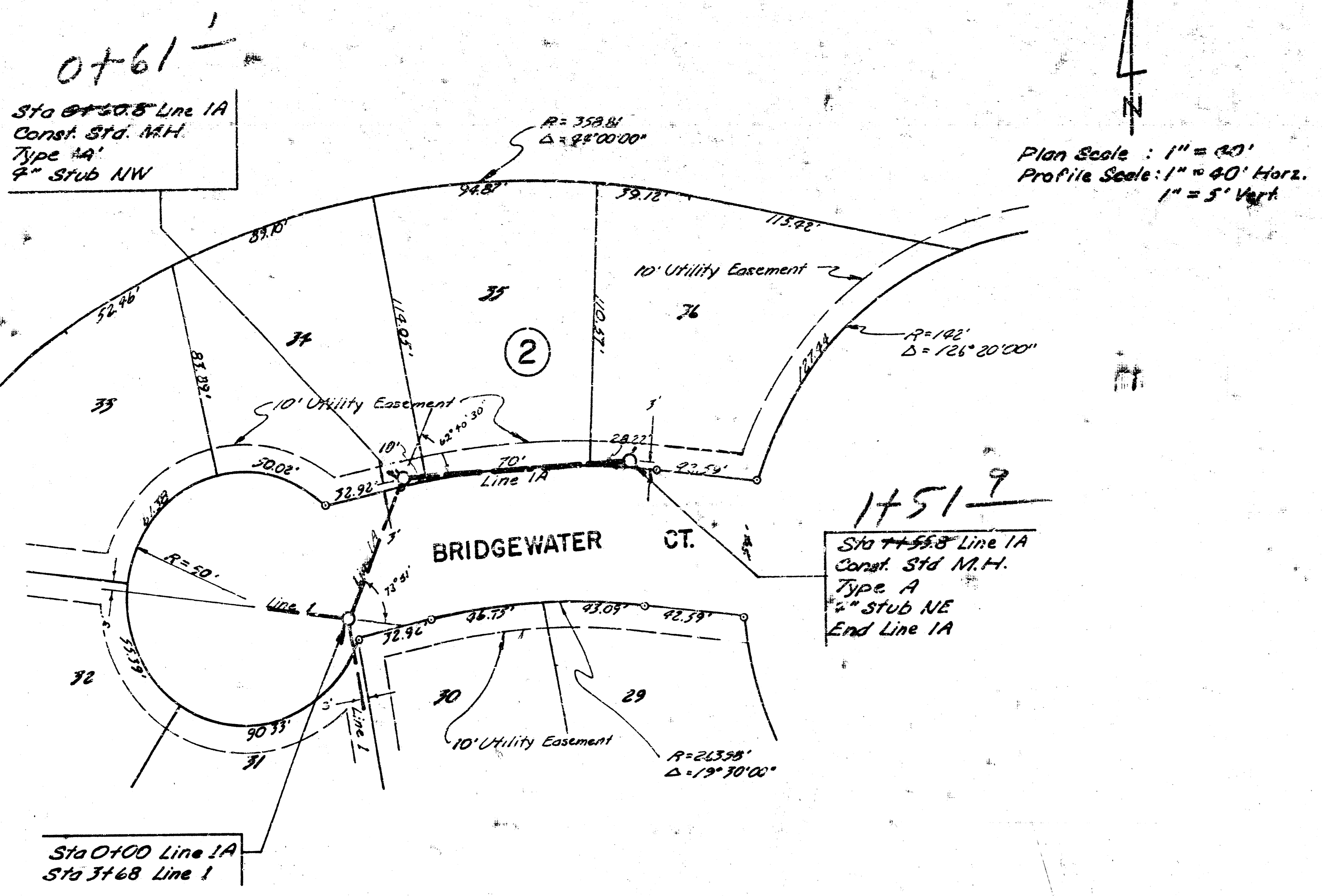
Sta 0+00 Line 1
 Begin Construction
 of 8" Sanitary Sewer
 at Existing M.H.

See detail (Sheet 9) for connection
 of 8" Sanitary Sewer to existing
 Manhole.

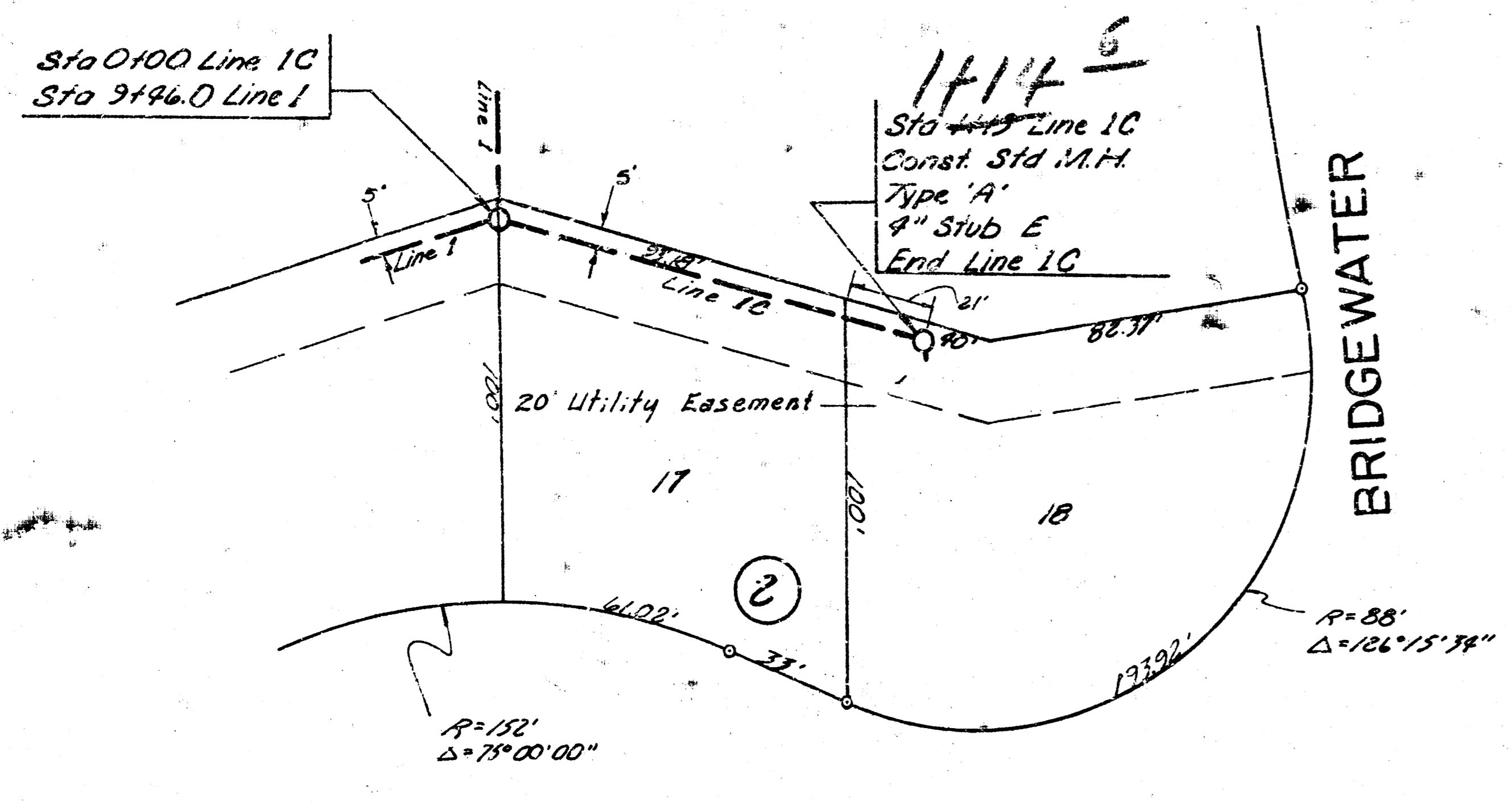
Sta 7+46.5 Line 1
 Const. Std. M.H.
 Type 'C' With
 Bolt Down Cover
 (See Note Below)

Note: The Bolt Down Cover shall be a
 Clay & Bailey No. 2014M with brass bolts
 and rubber gaskets or approved equal.

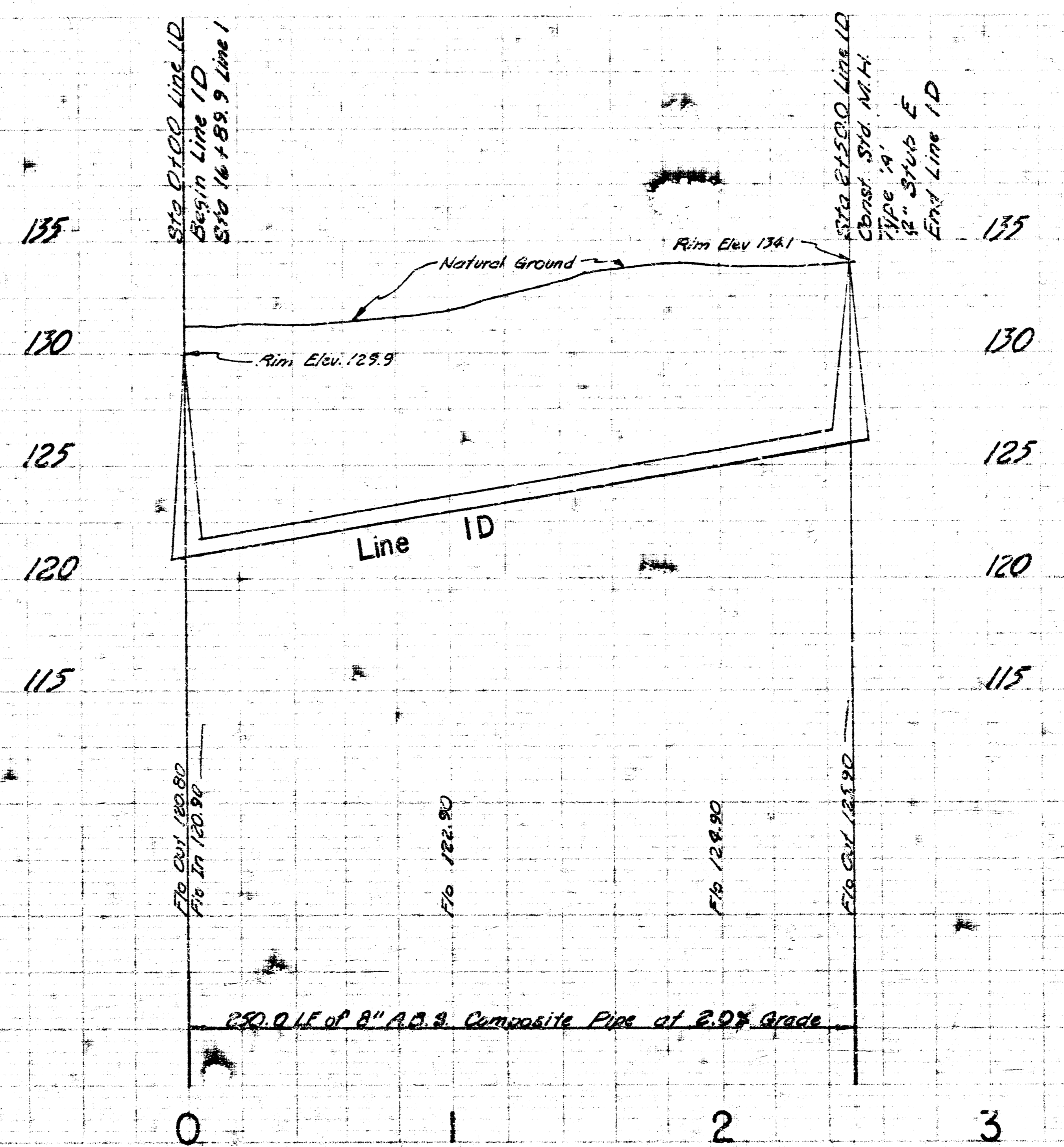
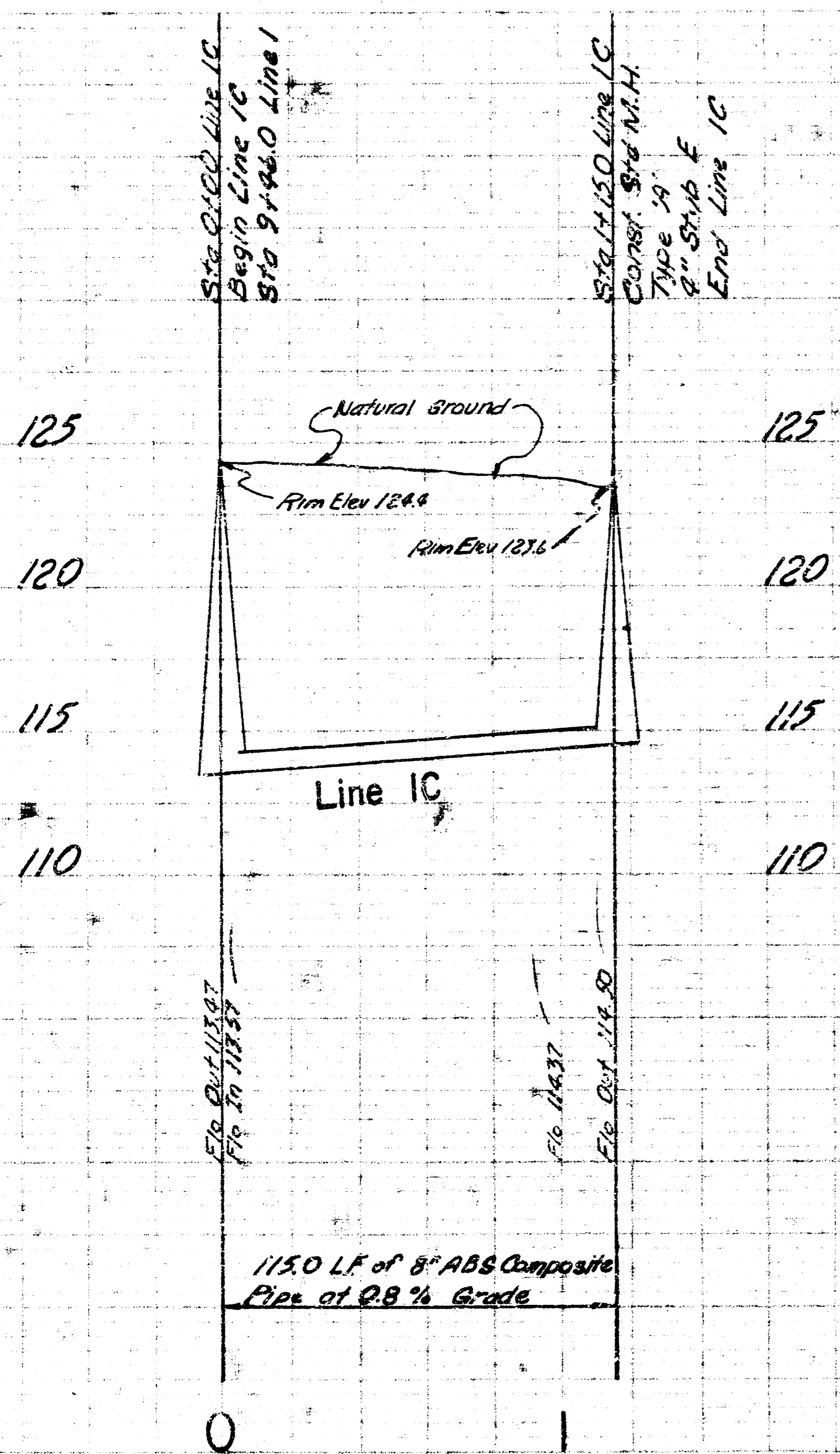
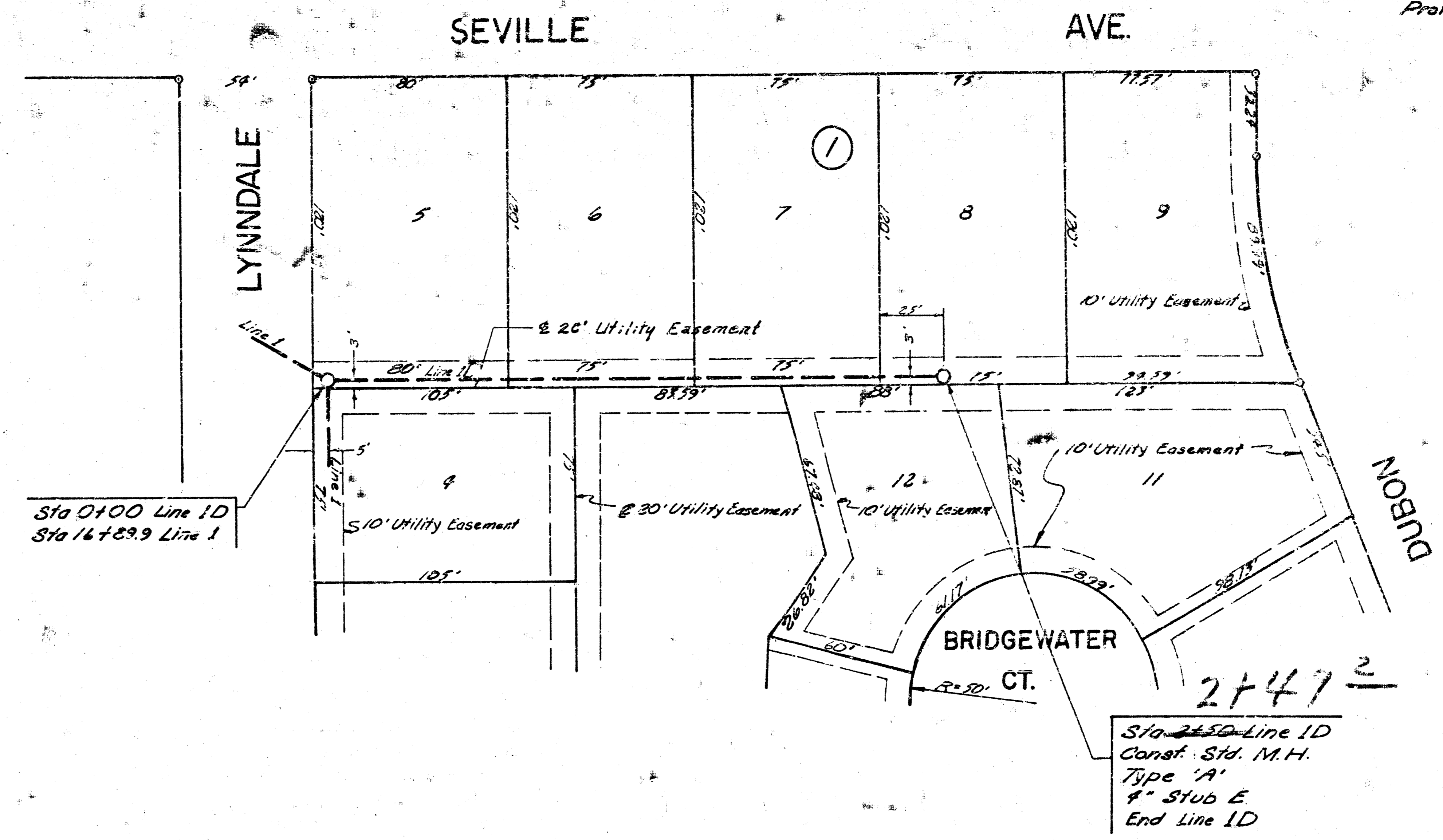


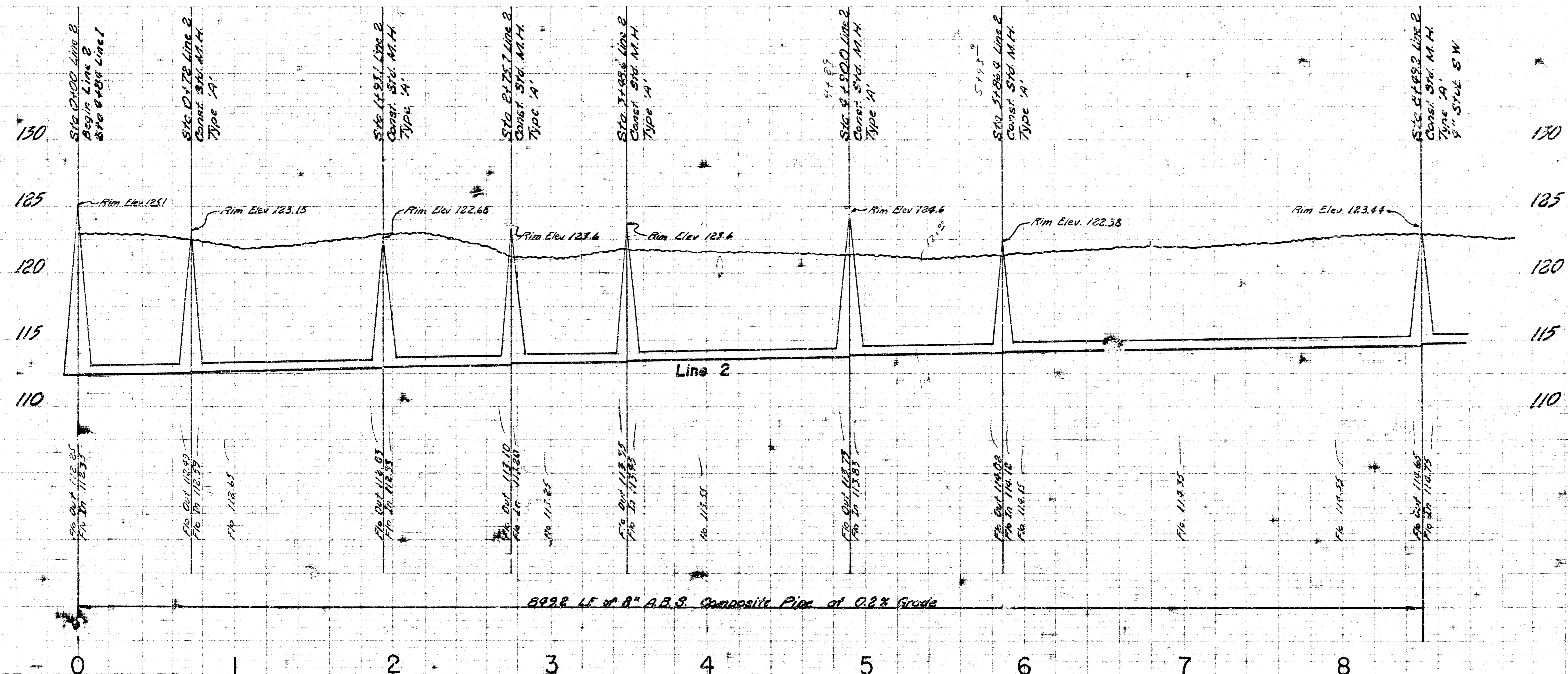
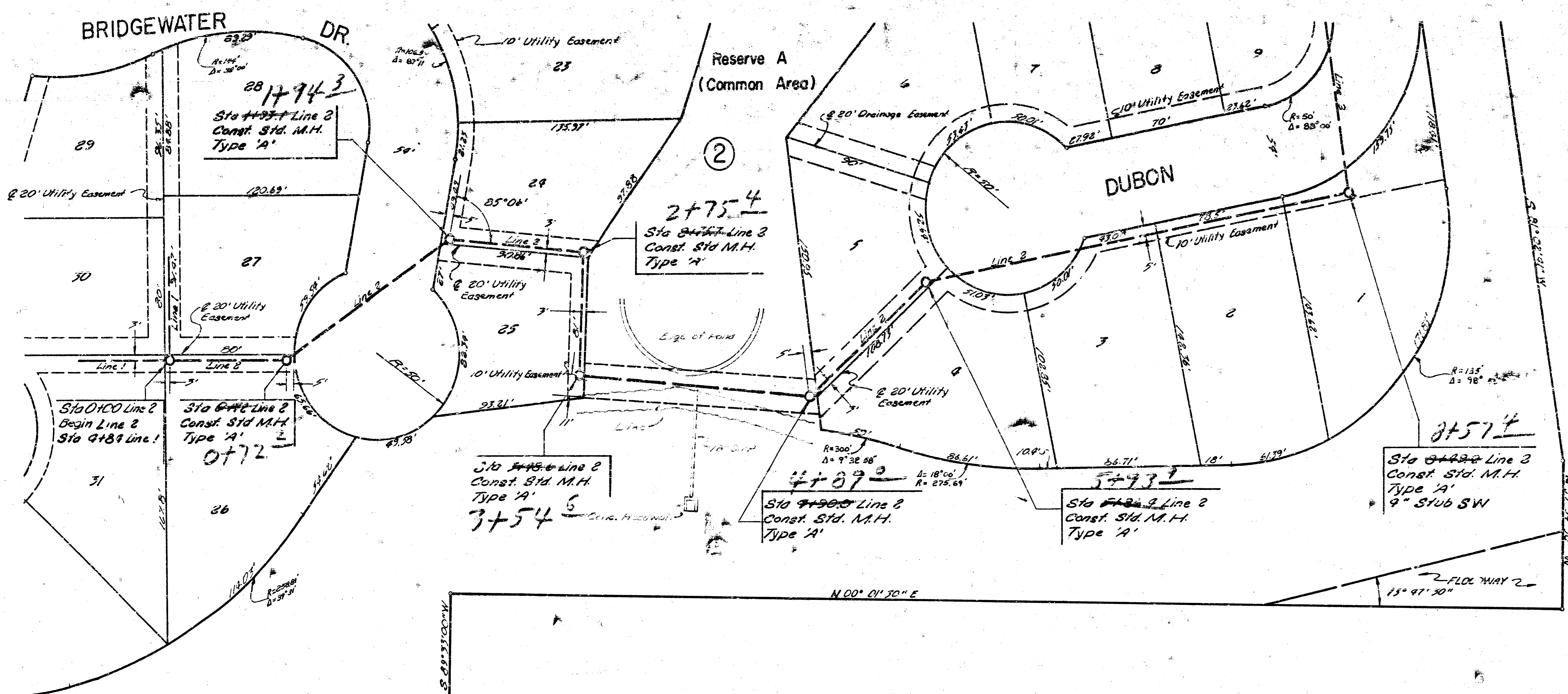


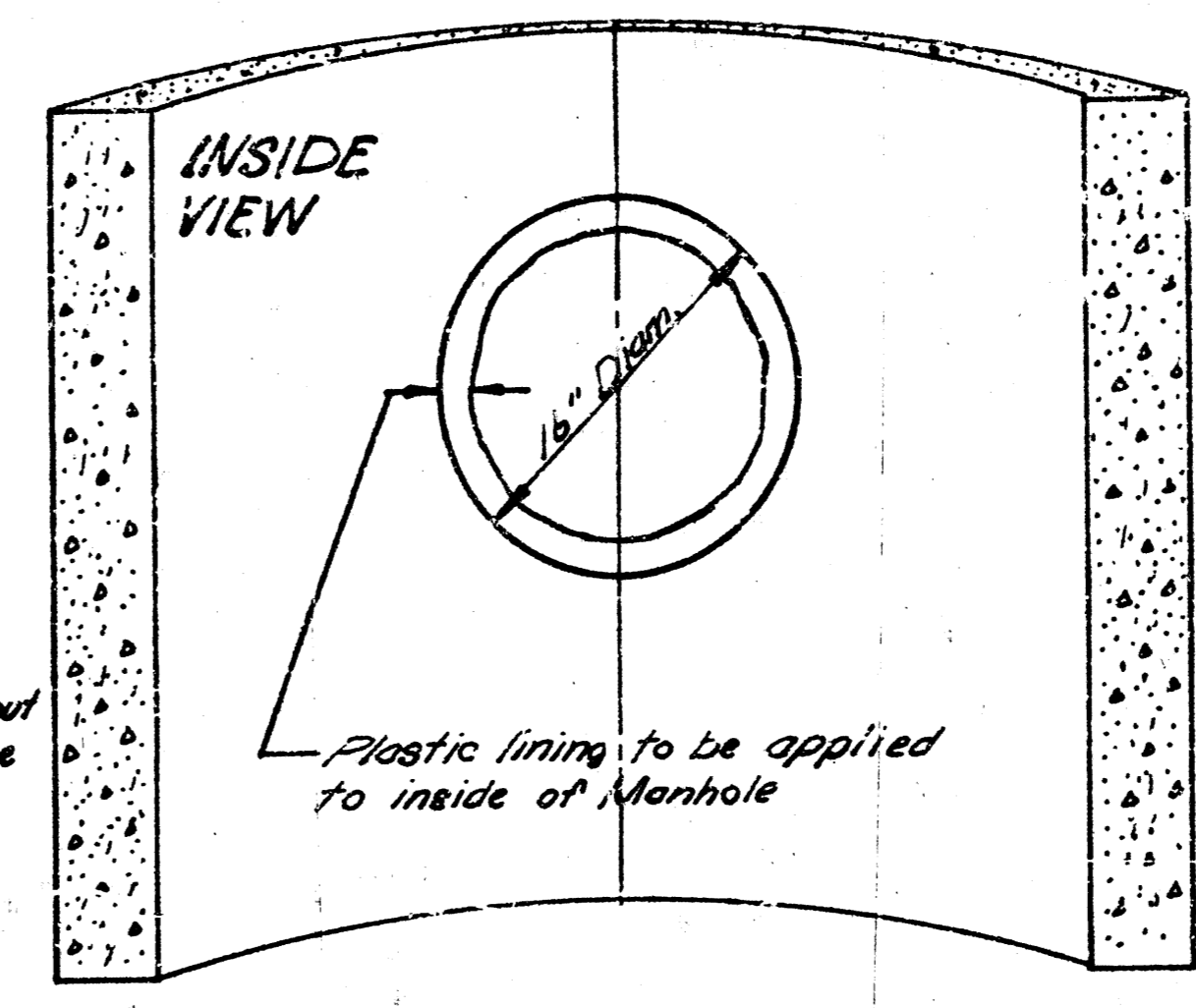
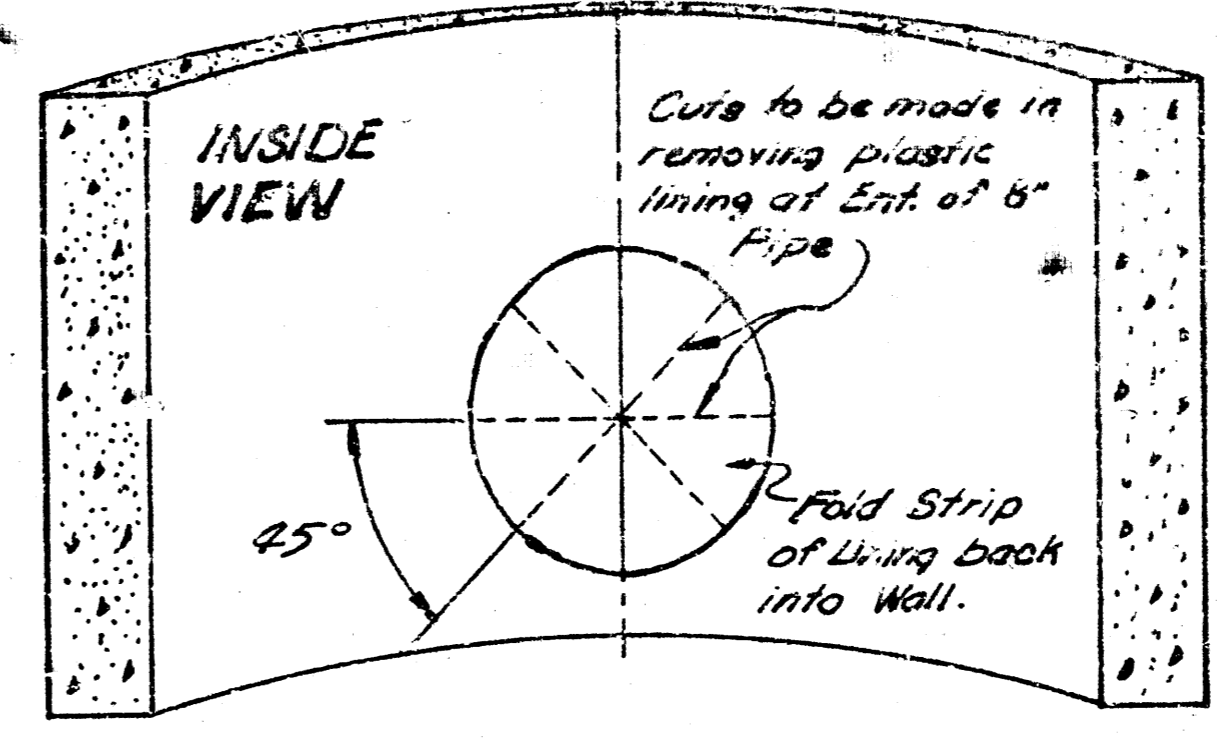
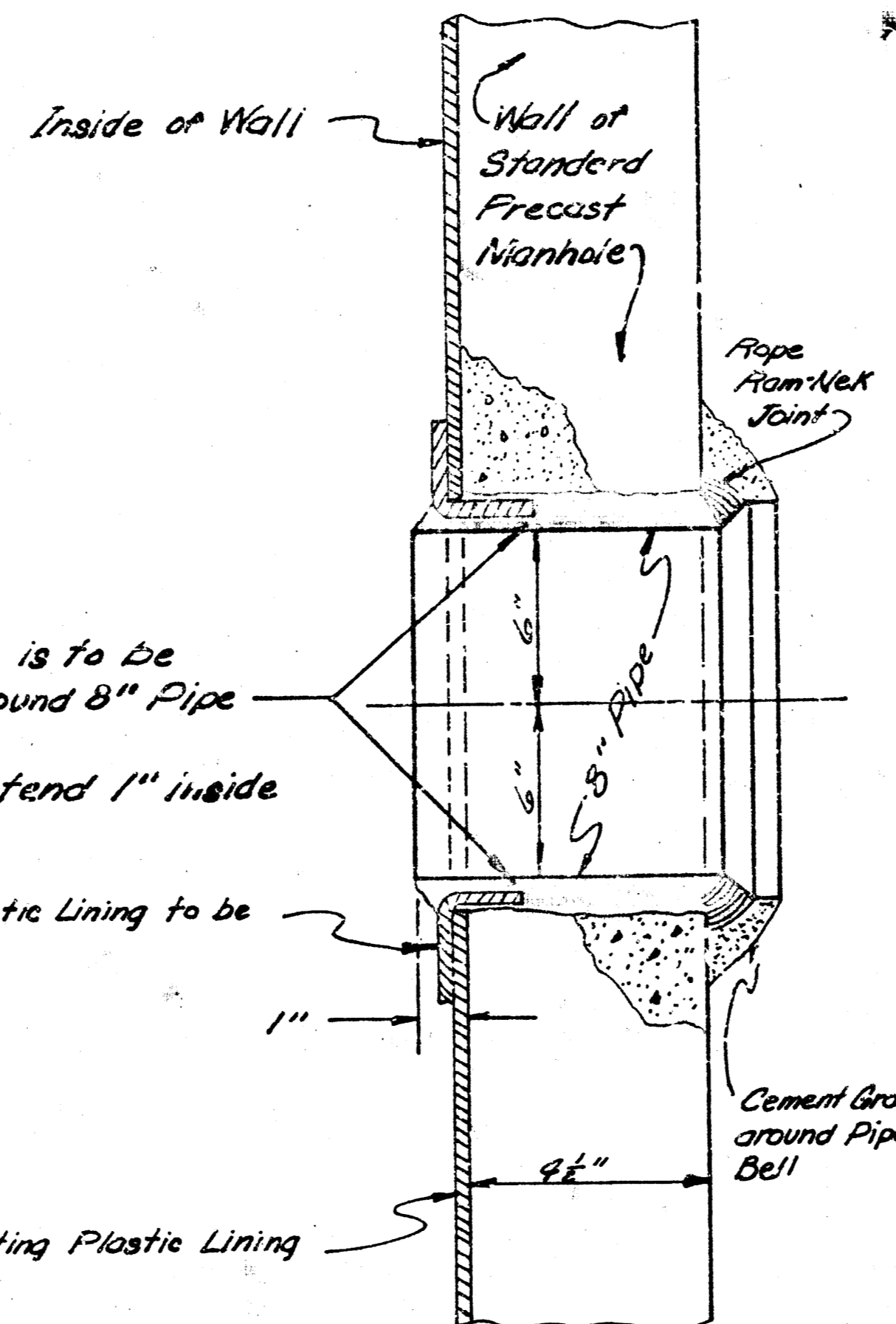
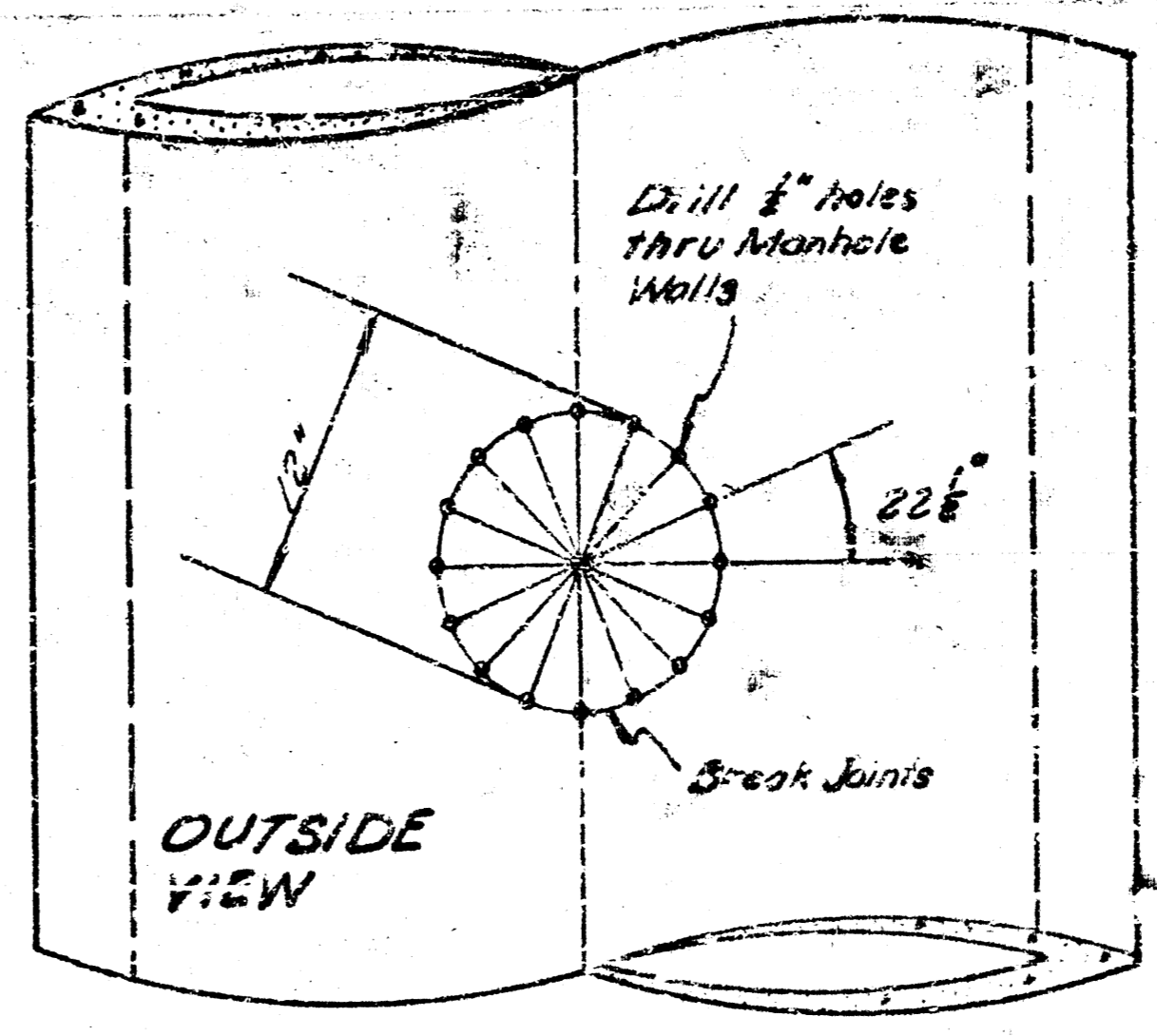
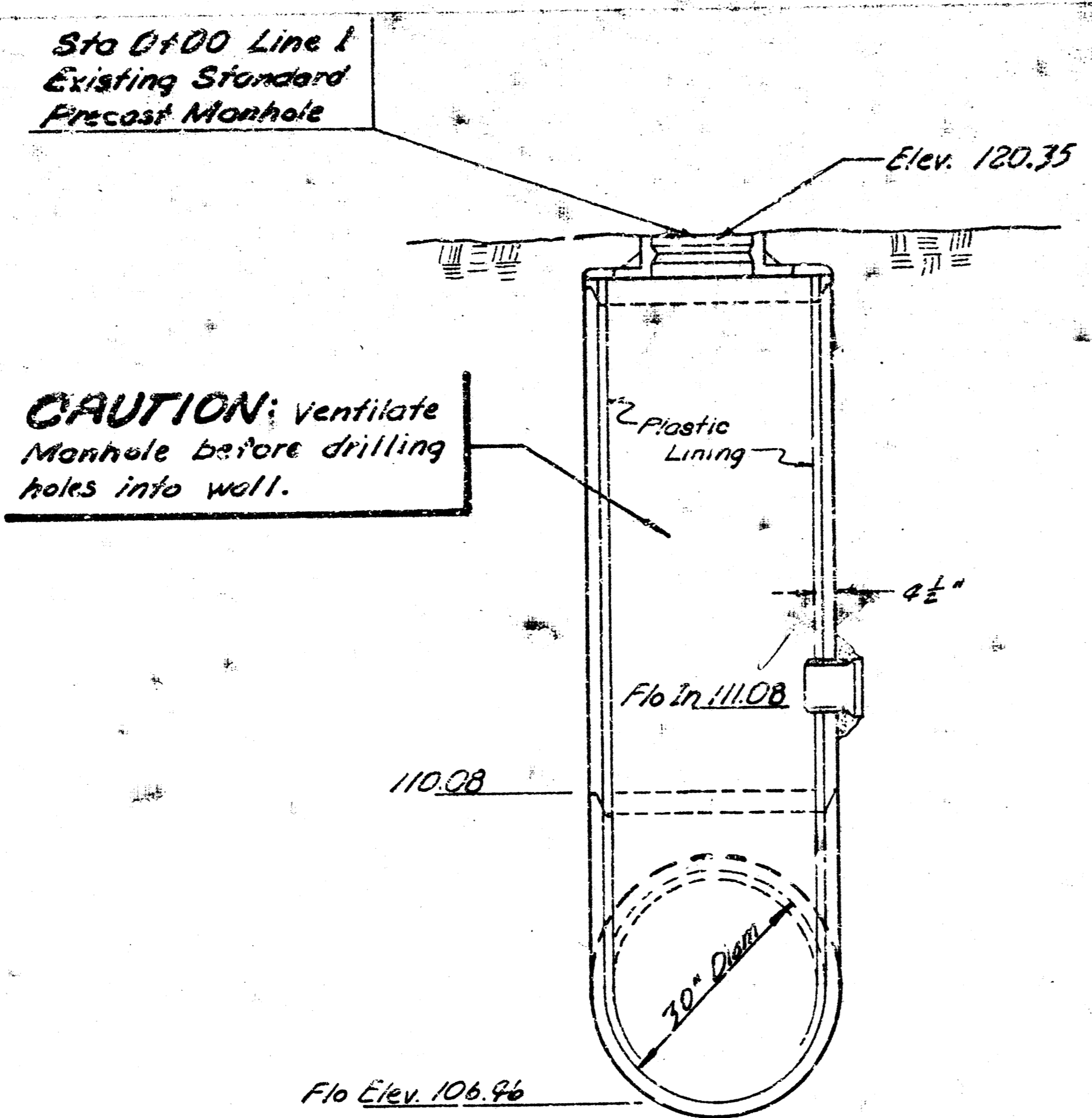
Plan Scale : 1" = 40'
 Profile Scale : 1" = 40' Horiz.
 1" = 5' Vert.



Plan Scale : 1" = 40'
 Profile Scale : 1" = 40' Horiz.
 1" = 5' Vert.







Ram-Nek is to be
packed around 8" Pipe

Stub is to extend 1" inside
of Manhole

New Plastic Lining to be
applied

CONNECTION FOR
PRECAST MANHOLE
No Scale

Plan Scale : 1" = 30'
 Profile Scale : 1" = 30' Horiz.
 1" = 5' Vert.

Plan Scale : 1" = 30'
 Profile Scale : 1" = 30' Horiz.
 1" = 5' Vert.

