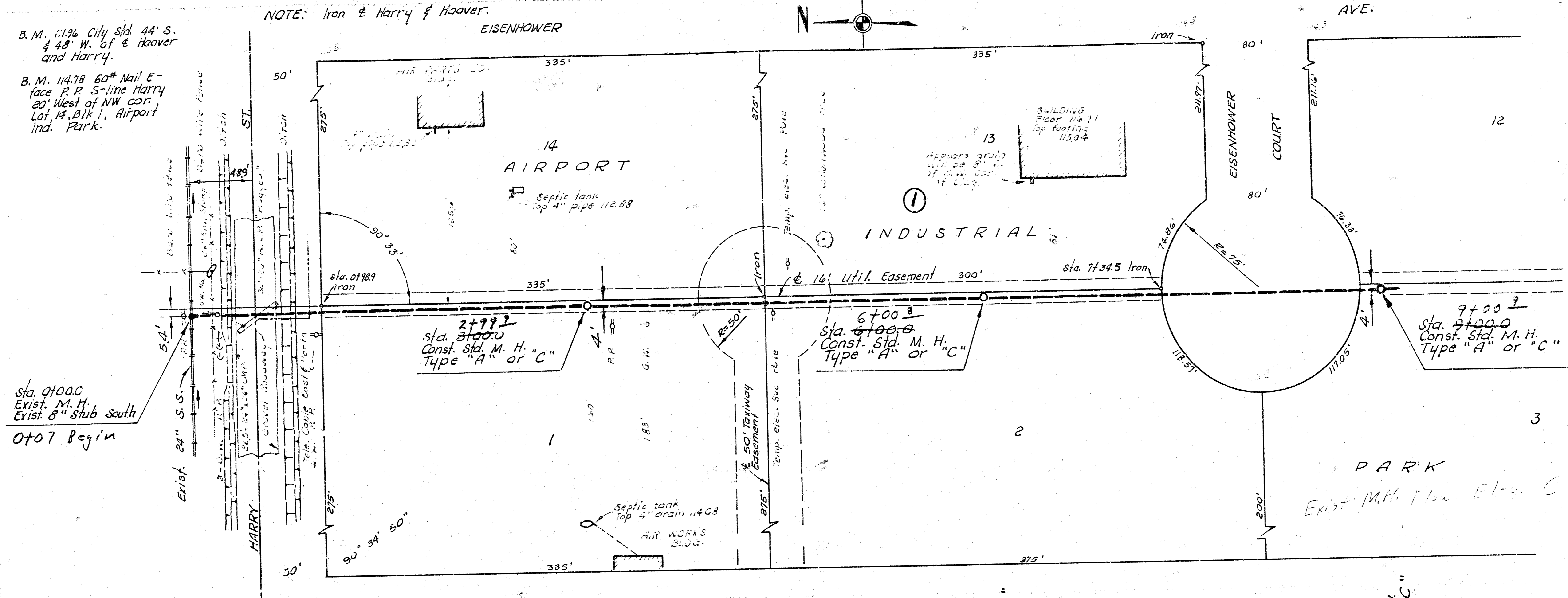
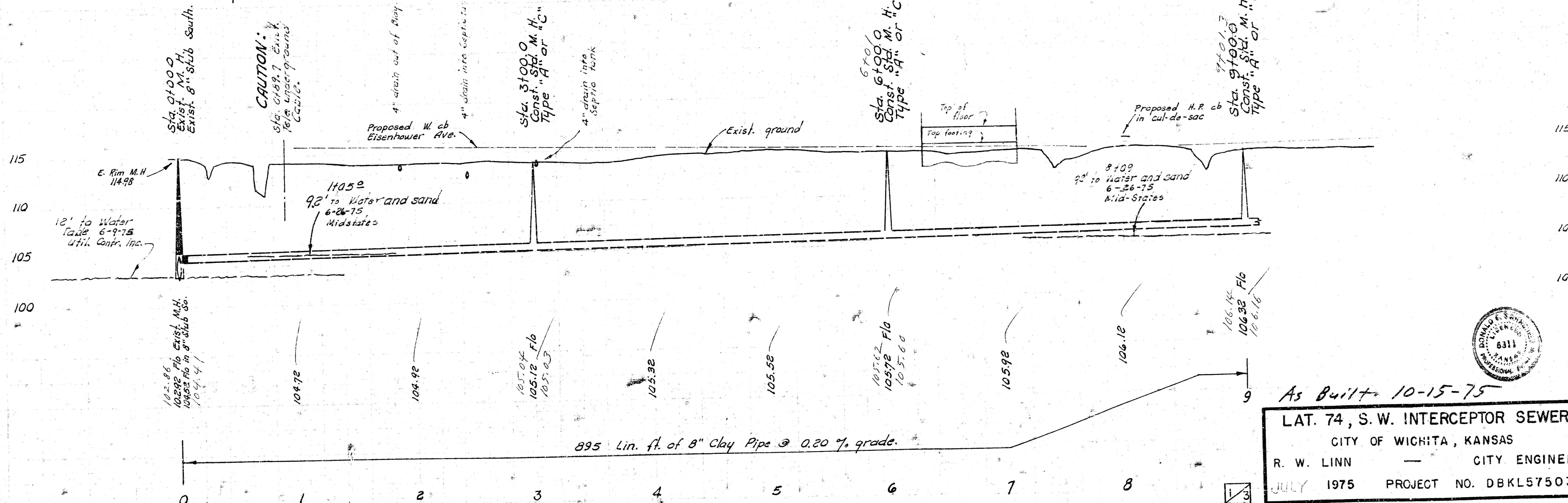


B. M. 1196 City Sid. 44' S. & 48' W. of & Hoover and Harry.
 B. M. 11478 60' Nail E-face P.P. S-line Harry 20' West of NW cor. Lot 14, Bk 1, Airport Ind. Park.

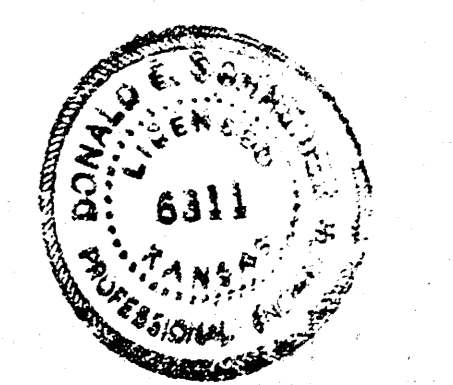
NOTE: Iron @ Harry & Hoover.



Plan Scale 1"=40'
 Profile Scale 1"=5' Vert.



As Built - 10-15-75
LAT. 74, S. W. INTERCEPTOR SEWER
 CITY OF WICHITA, KANSAS
 R. W. LINN — CITY ENGINEER
 JULY 1975 PROJECT NO. DBKLS75036

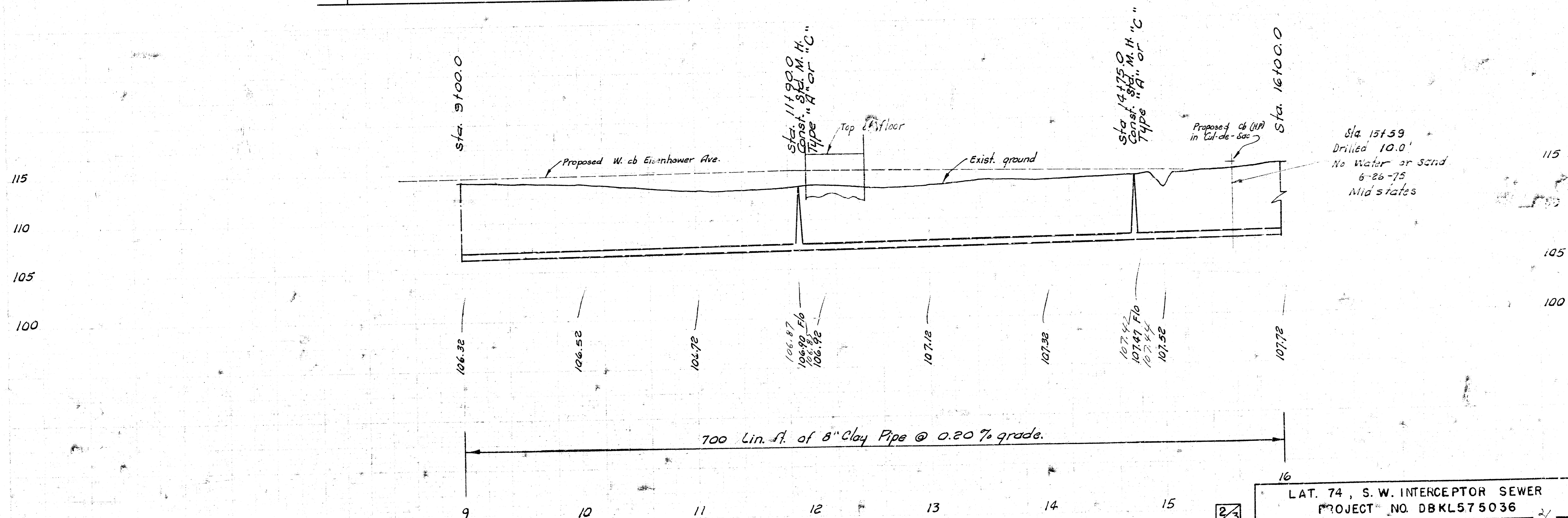
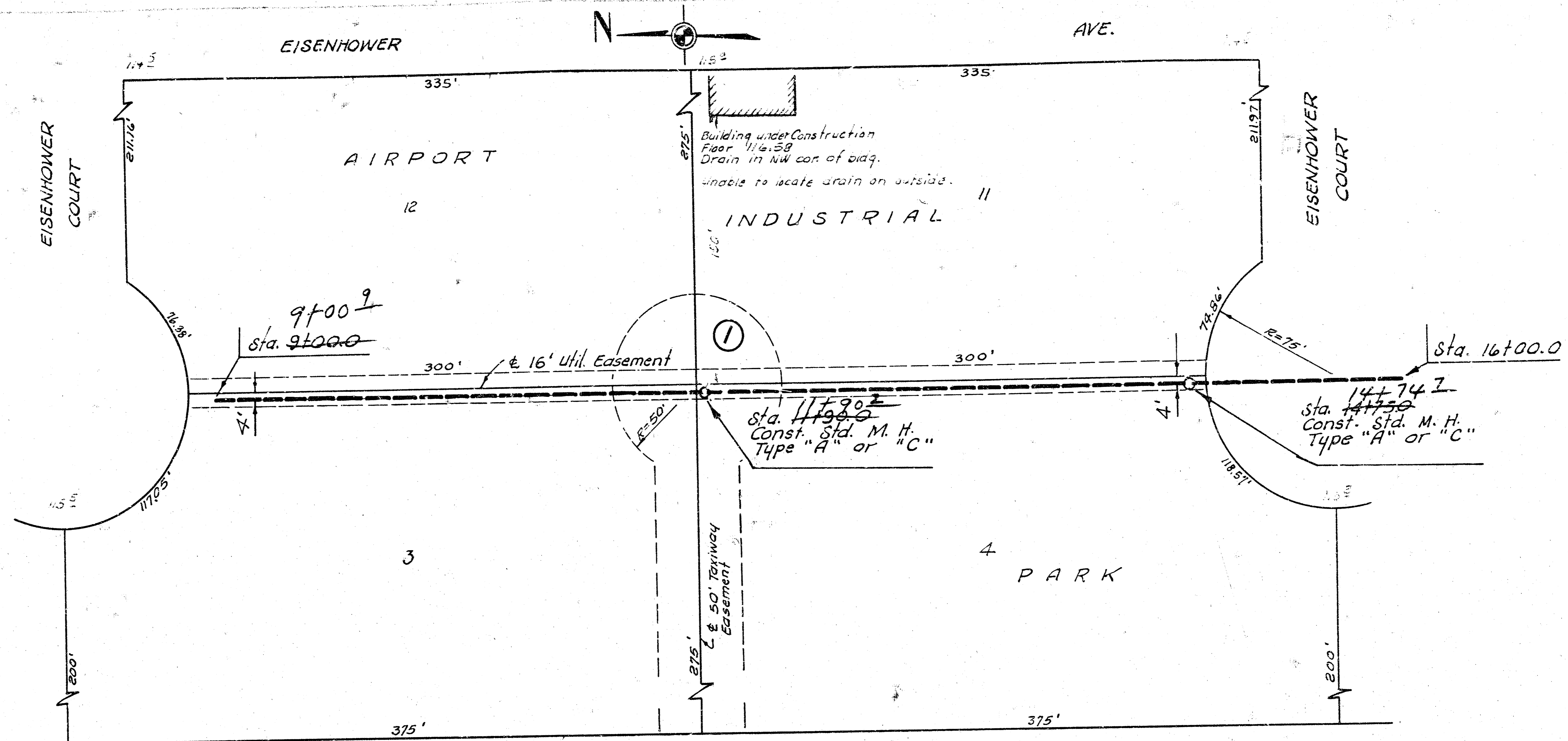


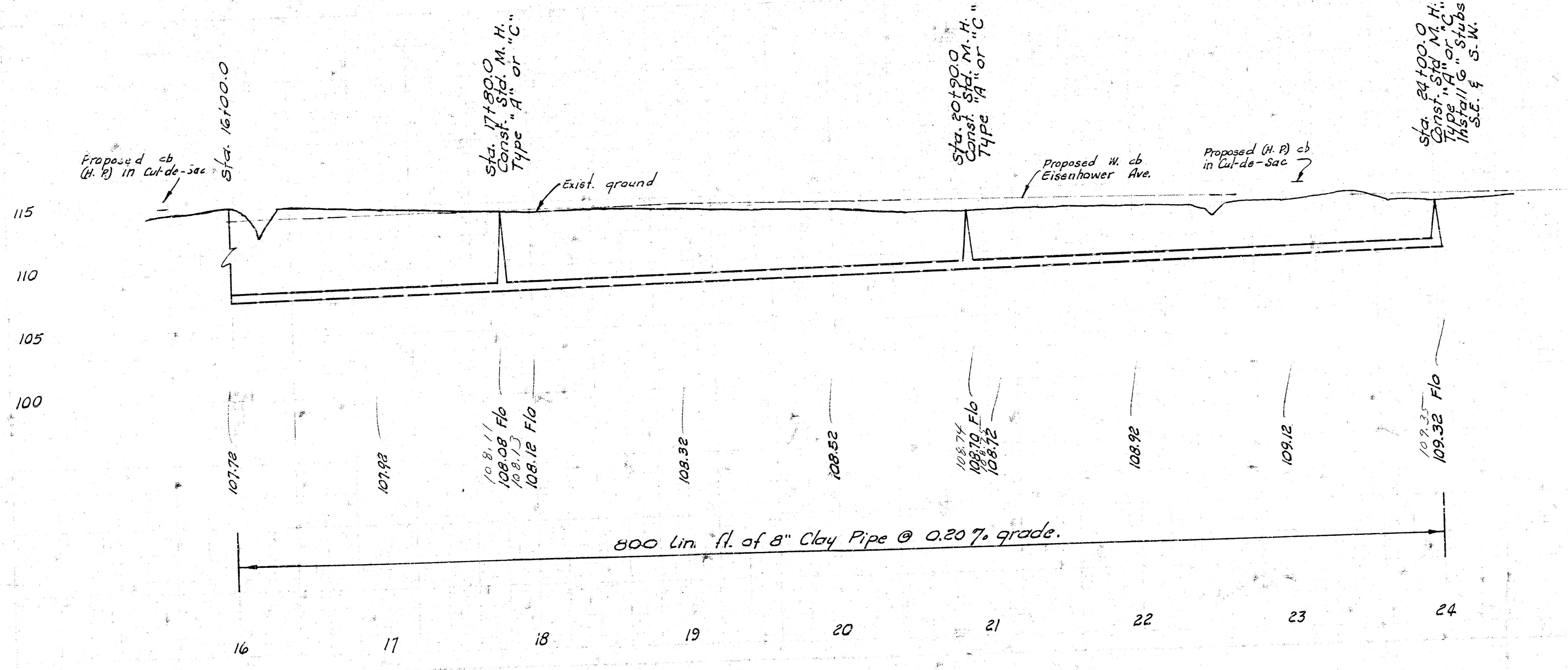
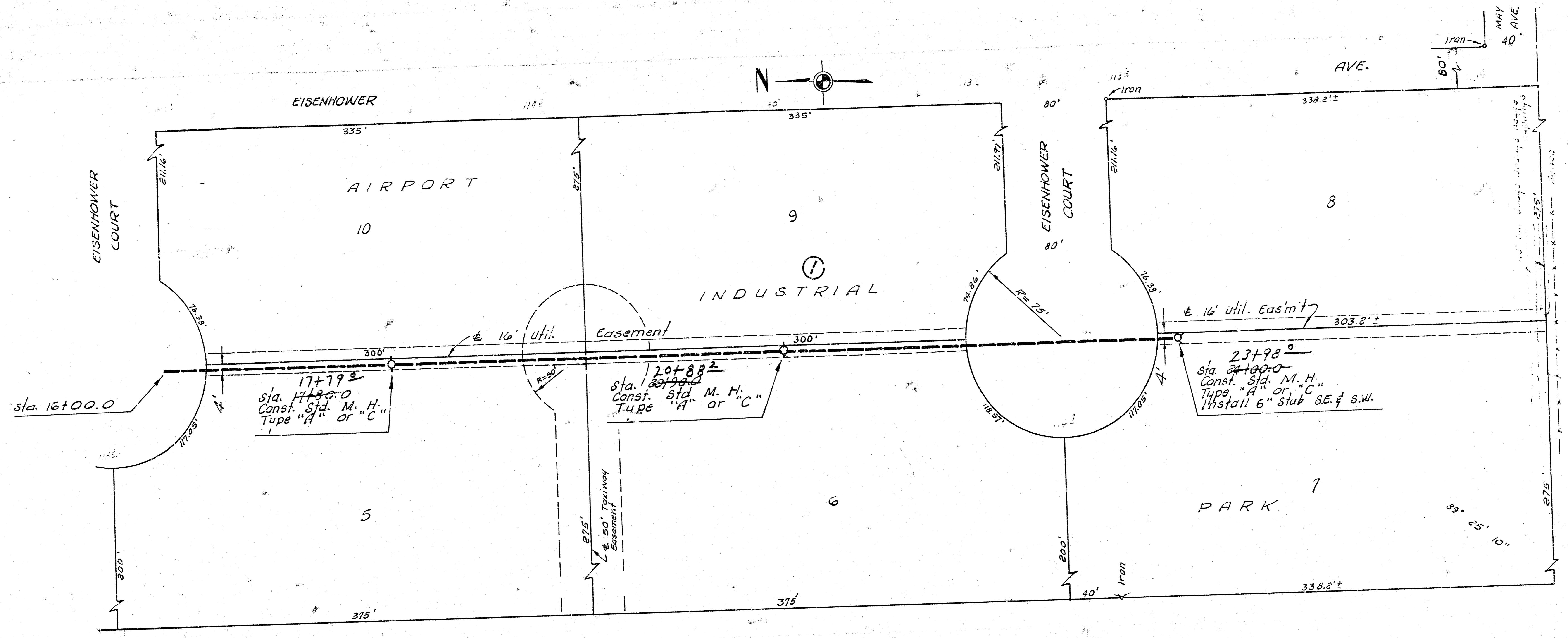
No. 140
 110 100 Lines in Harry & Eisenhower

221
 D. P. K.

115
 110
 105
 100

1/3





LAT. 74, S.W. INTERCEPTOR SEWER
PROJECT NO. DBKL575036

3/3