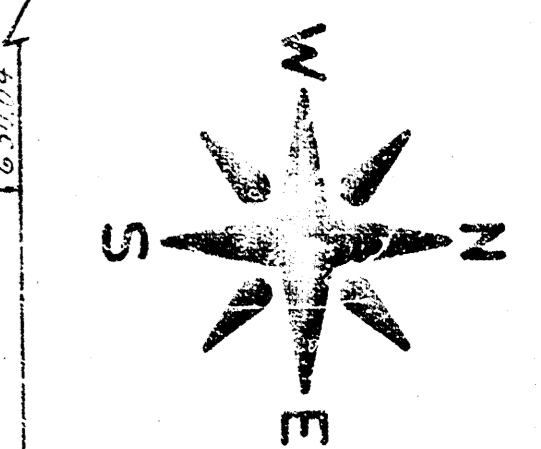
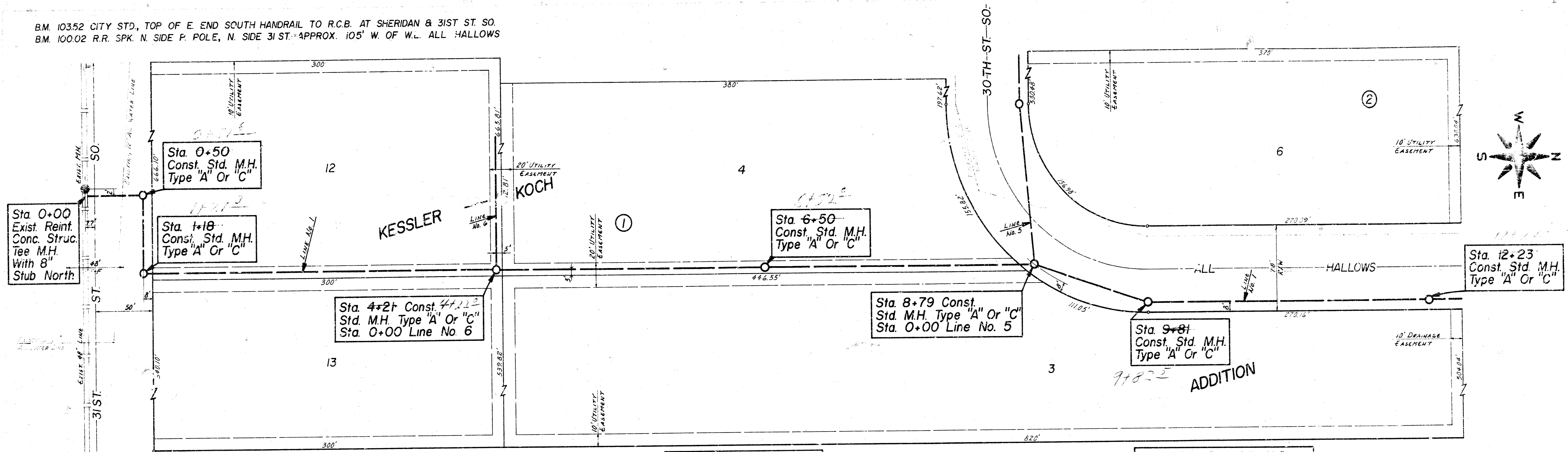


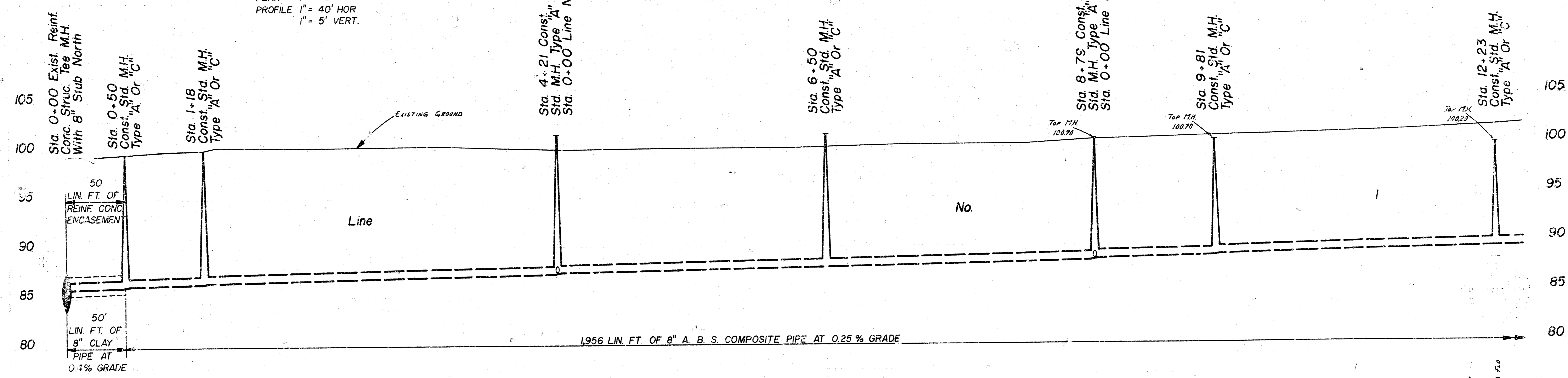
B.M. 103.52 CITY STD, TOP OF E. END SOUTH HANDRAIL TO R.C.B. AT SHERIDAN & 31ST ST. SO.
 B.M. 100.02 R.R. SPK. N. SIDE P. POLE, N. SIDE 31ST. APPROX. 105' W. OF W.L. ALL HALLOWS



Elev. Of Top Of Manholes
 At Stas. 4+21 & 6+50
 Are To Be Determined By
 The Field Engineer At The
 Time Of Construction.

Note: All Excess Excavated Material From
 This Project Shall Be Stockpiled In The
 Limits Of Kessler-Koch Addition As Directed
 By The Engineer Such As To Facilitate Its
 Use As Fill Material For Street Pavement At
 A Later Date.

SCALE =
 PLAN 1" = 40'
 PROFILE 1" = 40' HOR.
 1" = 5' VERT.



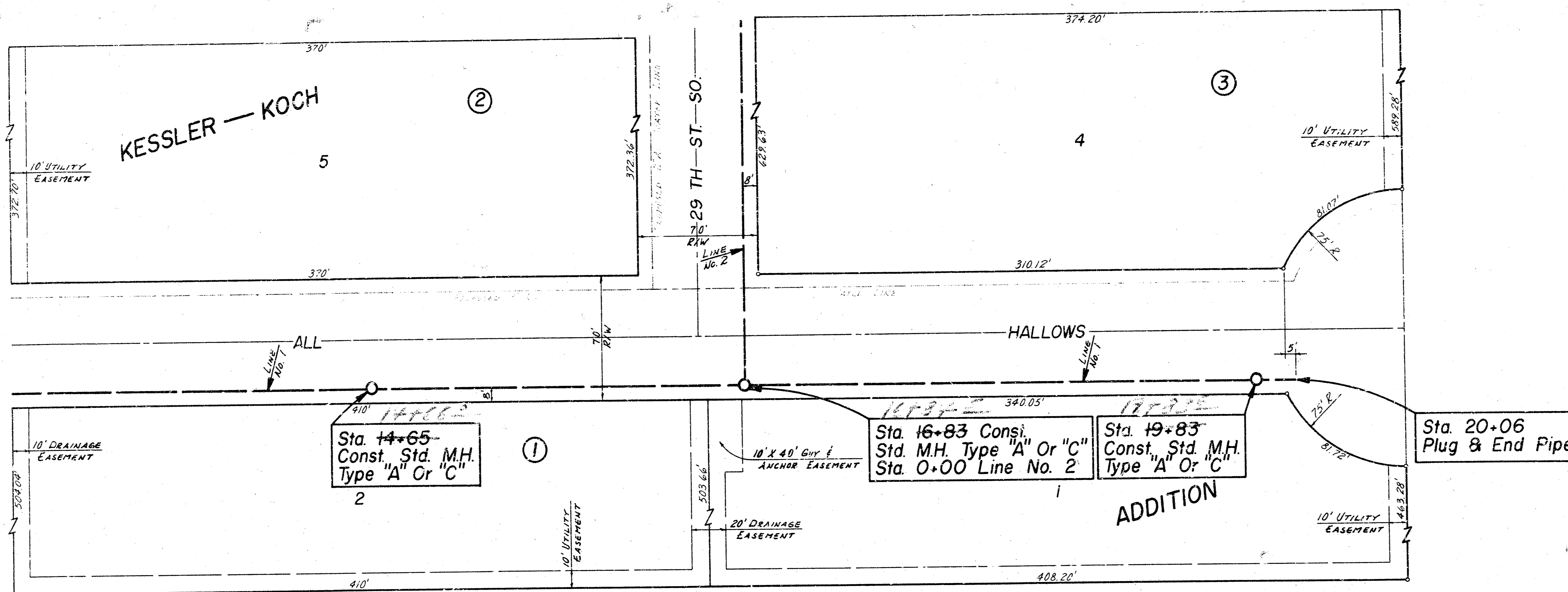
LAT 80, SOUTHWEST INTERCEPTOR
 CITY OF WICHITA, KANSAS
 R. W. LINN CITY ENGINEER
 DATE: SEP 27 1976 PROJ. NO. DBKL575072
 SHEET 1 OF 10

As built 4-8-77

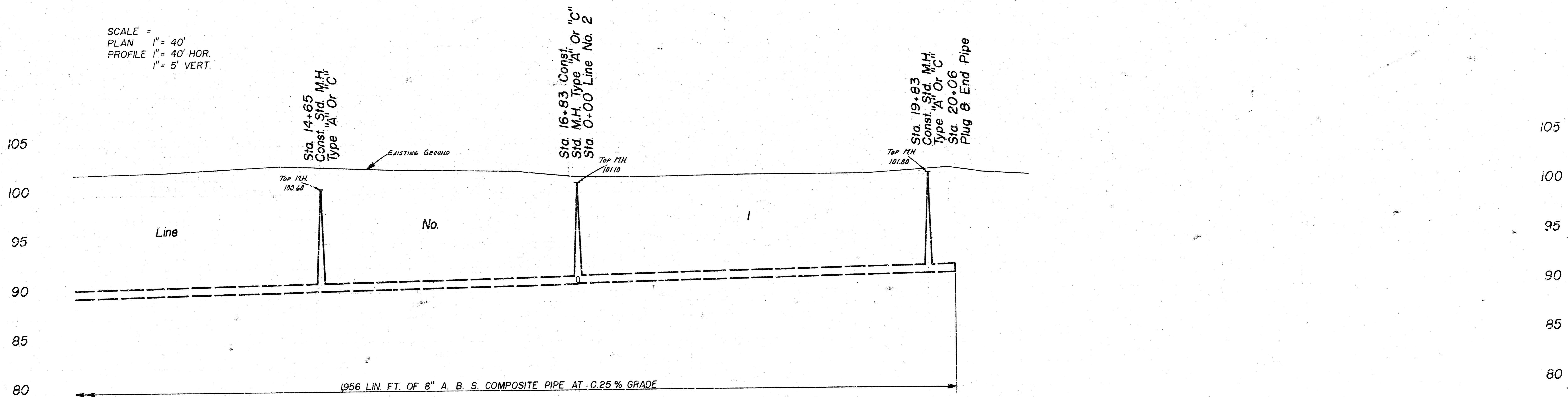
B.M. 10352 CITY STD., TOP OF E. END SOUTH HANDRAIL TO R.C.B. AT SHERIDAN & 31ST ST. SO.
 B.M. 10002 R.R. SPK. N. SIDE P. POLE, N. SIDE 31ST. APPROX. 105' W. OF W.L. ALL HALLOWS

A. V. G. V. G. V. G.
 A. V. G. V. G. V. G.

249



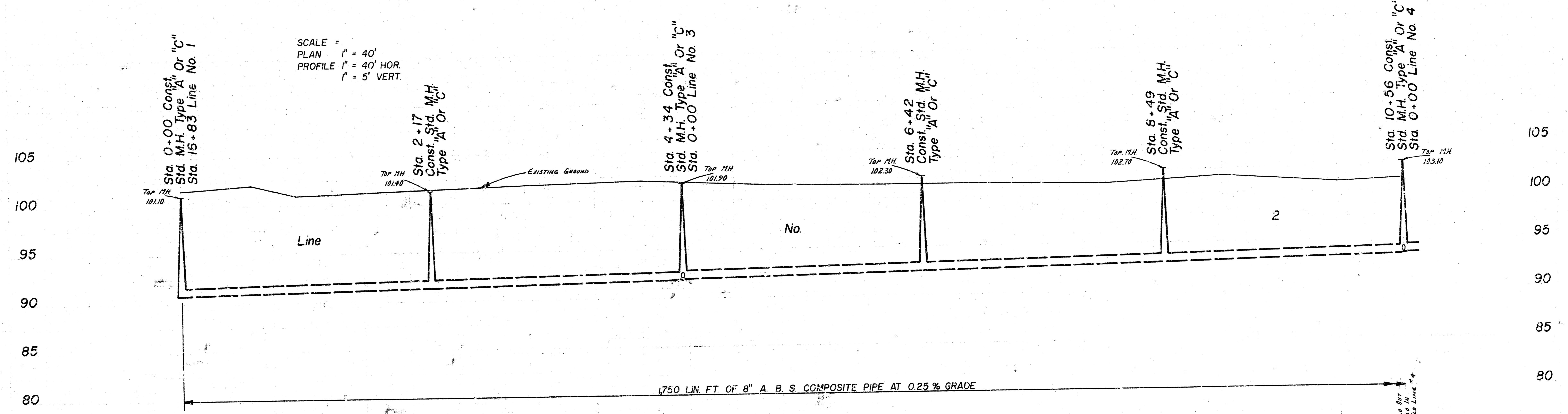
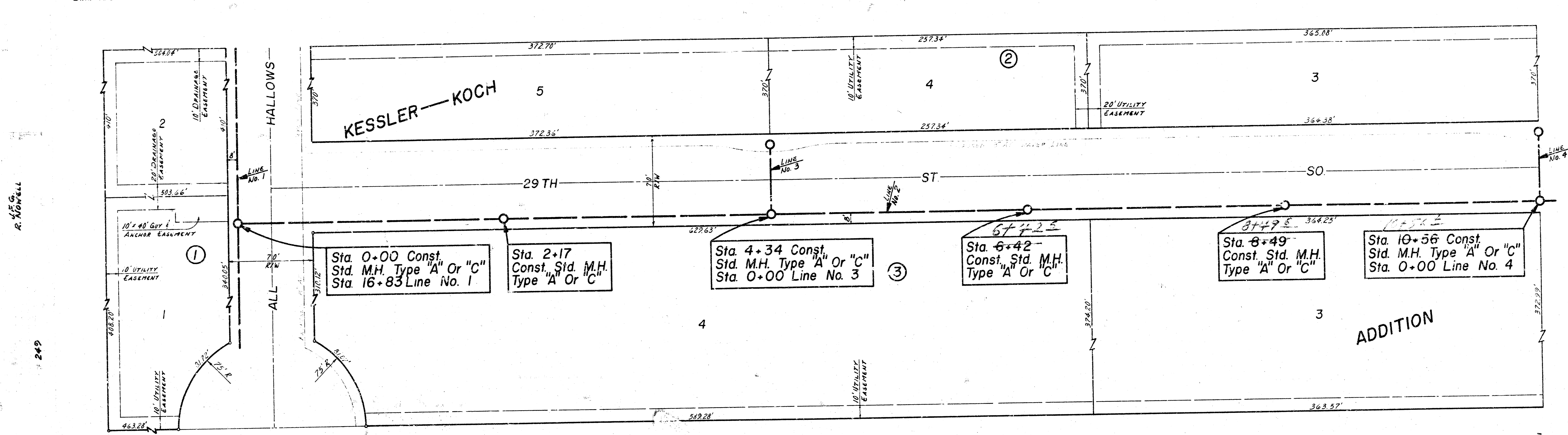
SCALE =
 PLAN 1" = 40'
 PROFILE 1" = 40' HOR.
 1" = 5' VERT.



13 14 15 16 17 18 19 20 21

LAT. 80, SOUTHWEST INTERCEPTOR
 CITY OF WICHITA, KANSAS
 R. W. LINN CITY ENGINEER
 DATE: Sept 7, 1967
 SHEET 2 OF 10
 PROJ. NO. DBKL 575072

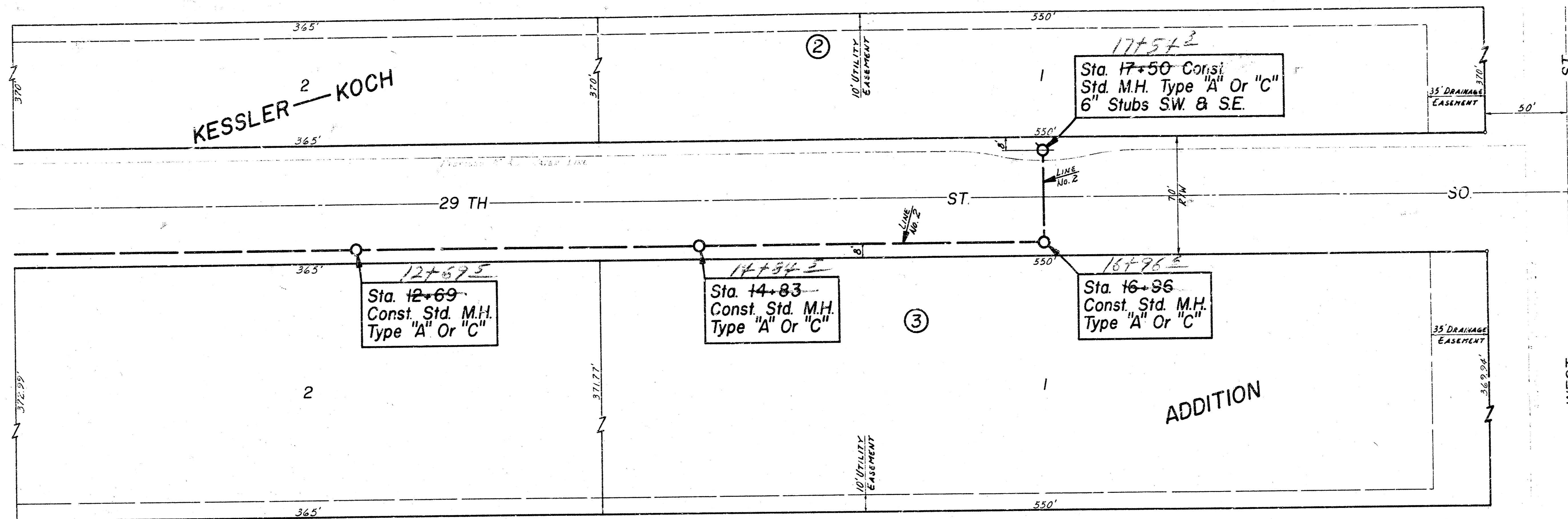
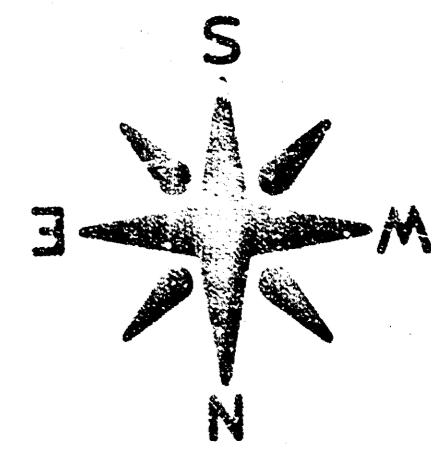
B.M. 103.77 R.R. SPK. E. SIDE P POLE ON W. SIDE OF WEST ST. APPROX. 75' N. OF N.L. 29 TH ST. SO.



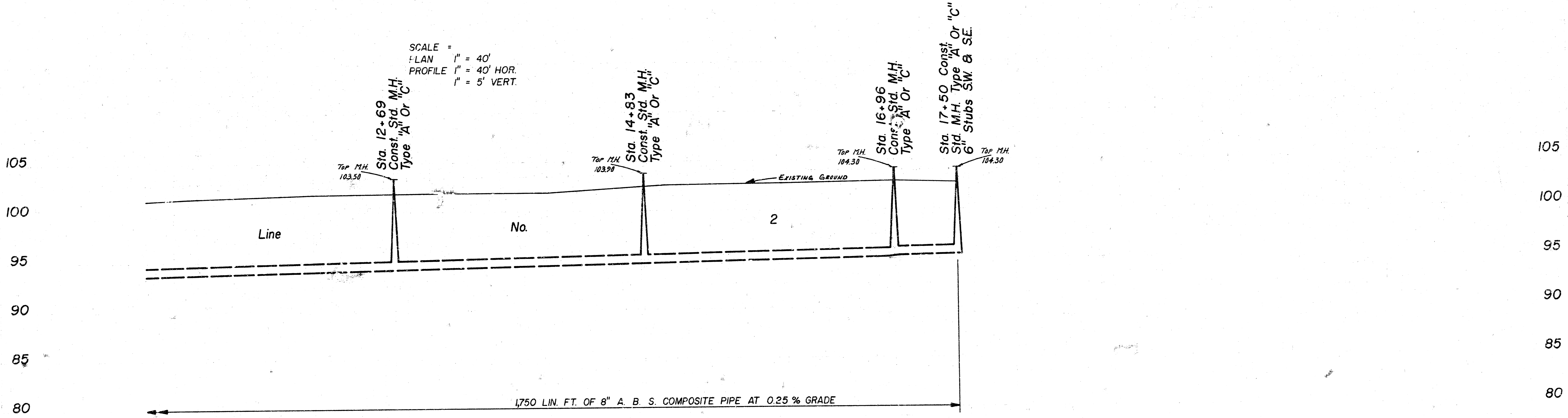
SCALE =
 PLAN 1" = 40'
 PROFILE 1" = 40' HOR.
 1" = 5' VERT.

LAT. 80, SOUTHWEST INTERCEPTOR
 CITY OF WICHITA, KANSAS
 R. W. LINN CITY ENGINEER
 DATE Sept 76
 SHEET 3 OF 10
 PROJ. NO. DBKL575072

B.M. 103.77-R.R. SPK. E. SIDE P. POLE ON W. SIDE OF WEST ST. APPROX. 75' N. OF N.L. 29 TH ST. SO.



SCALE =
 PLAN 1" = 40'
 PROFILE 1" = 40' HOR.
 1" = 5' VERT.

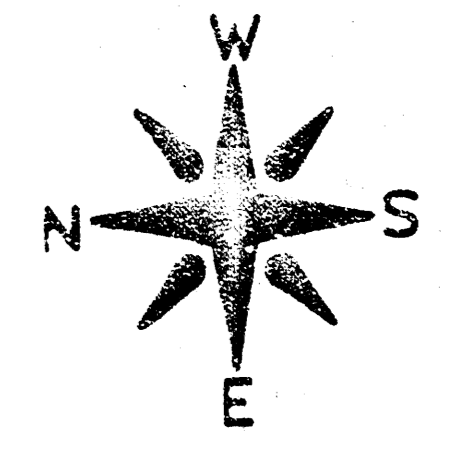
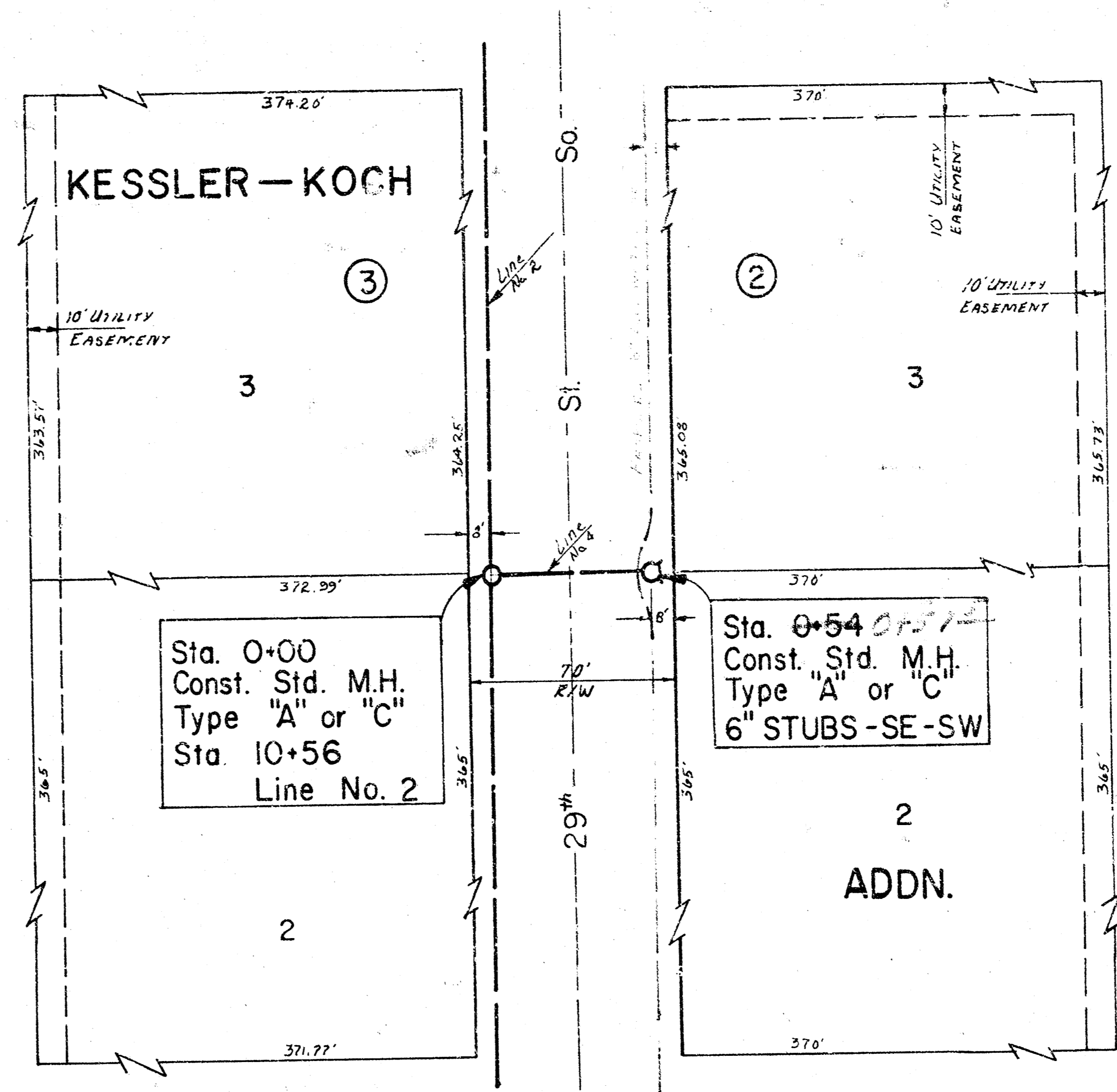
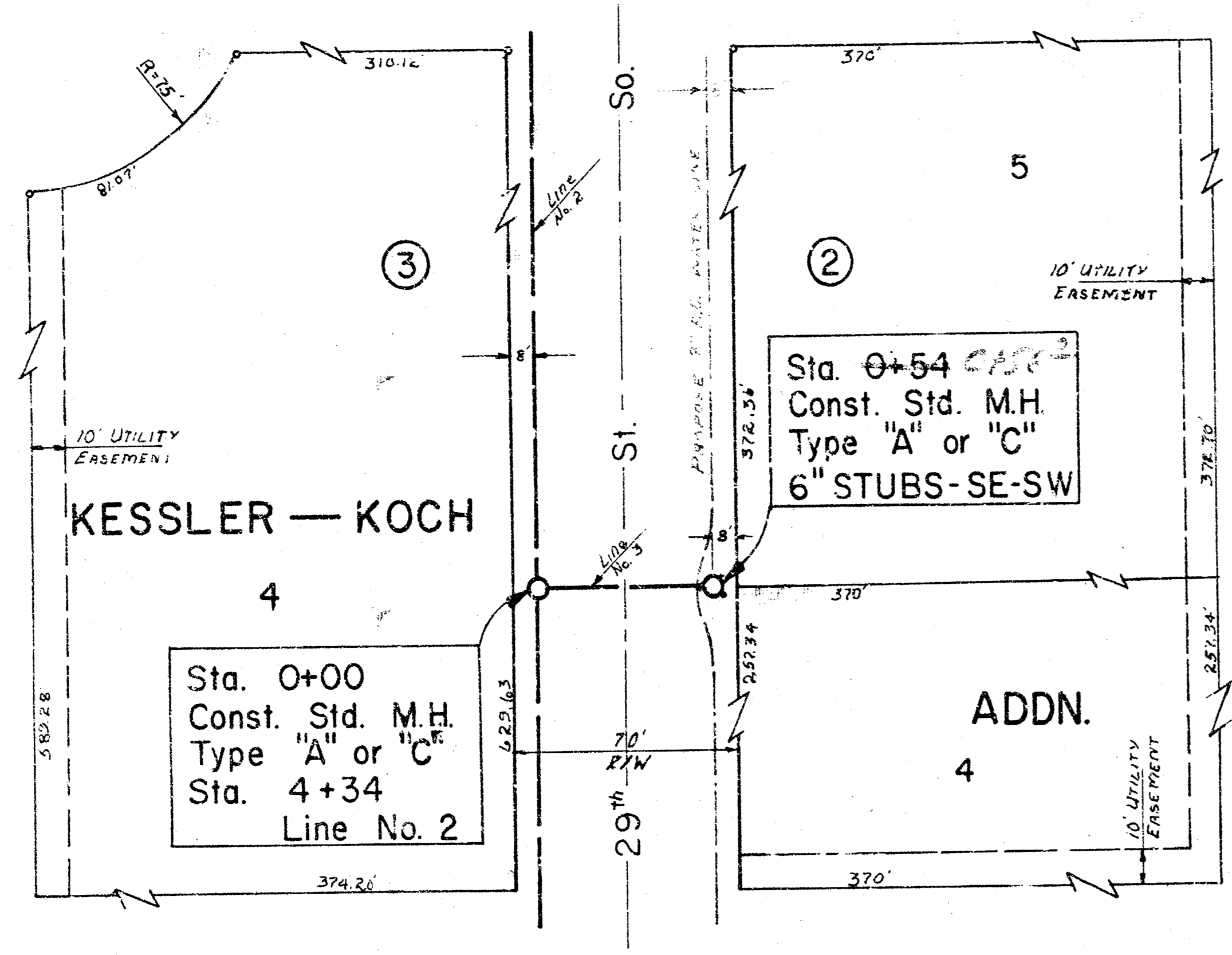


LAT. 80, SOUTHWEST INTERCEPTOR
 CITY OF WICHITA, KANSAS
 R. W. LINN CITY ENGINEER
 DATE Sept 11, 1960
 SHEET 4 OF 10
 PROJ. NO. DBKL575072

11 23.83
 12 94.68
 13 94.26 F.L.O.
 14 94.58
 15 94.79 F.L.O.
 16 94.85
 17 95.00 F.L.O. for
 95.05 F.L.O. for
 95.10 F.L.O. for
 95.15 F.L.O. for
 95.20 F.L.O. for
 95.25 F.L.O. for
 18 95.56 F.L.O.

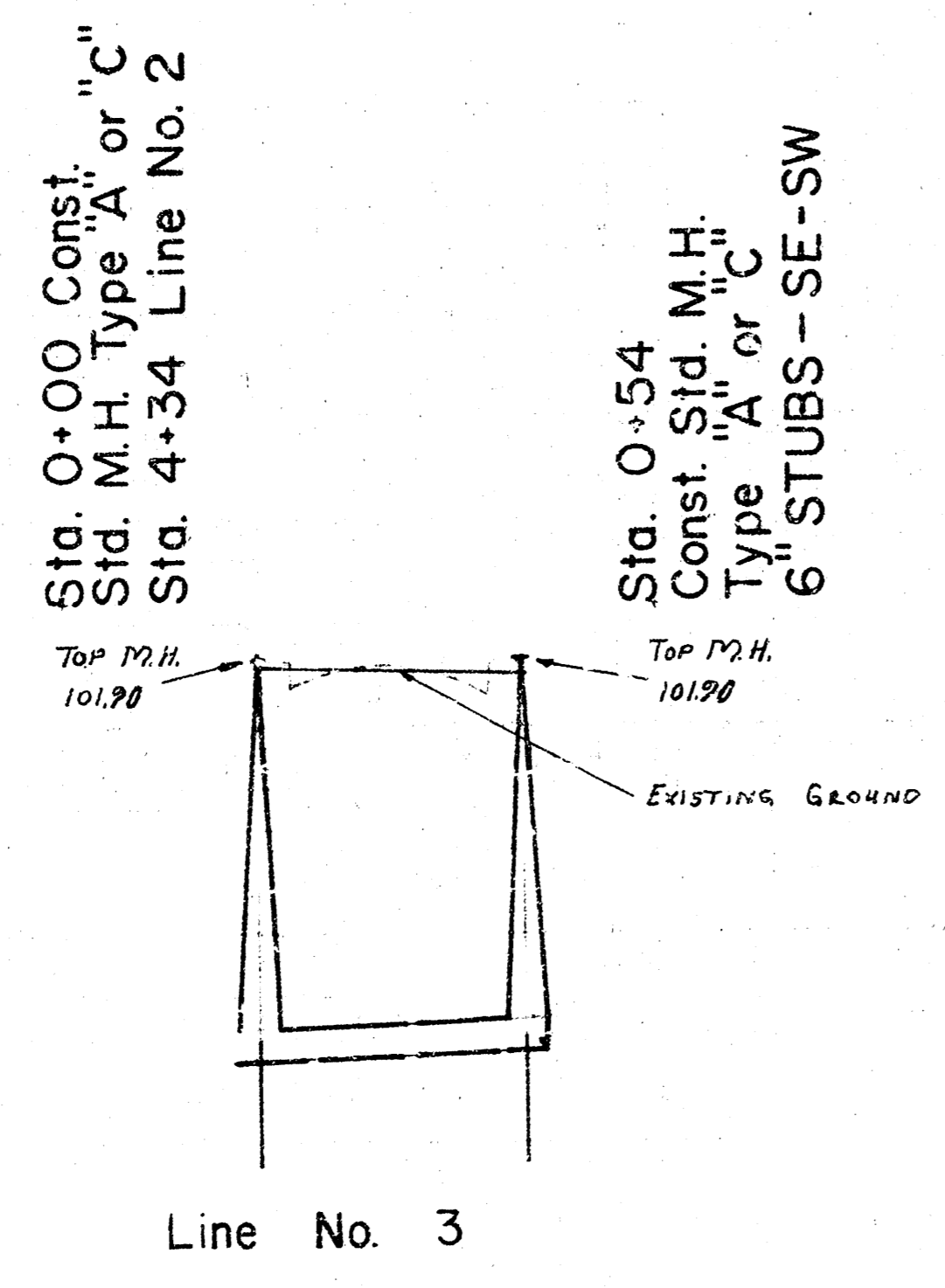
B.M. 103.77 R.R. SPK. E. SIDE P.P.GLE ON W. SIDE OF WEST ST. APPROX. 75' N. N.L. 29th ST. SO.

J.F.C.
J. NYSTADLAND
243



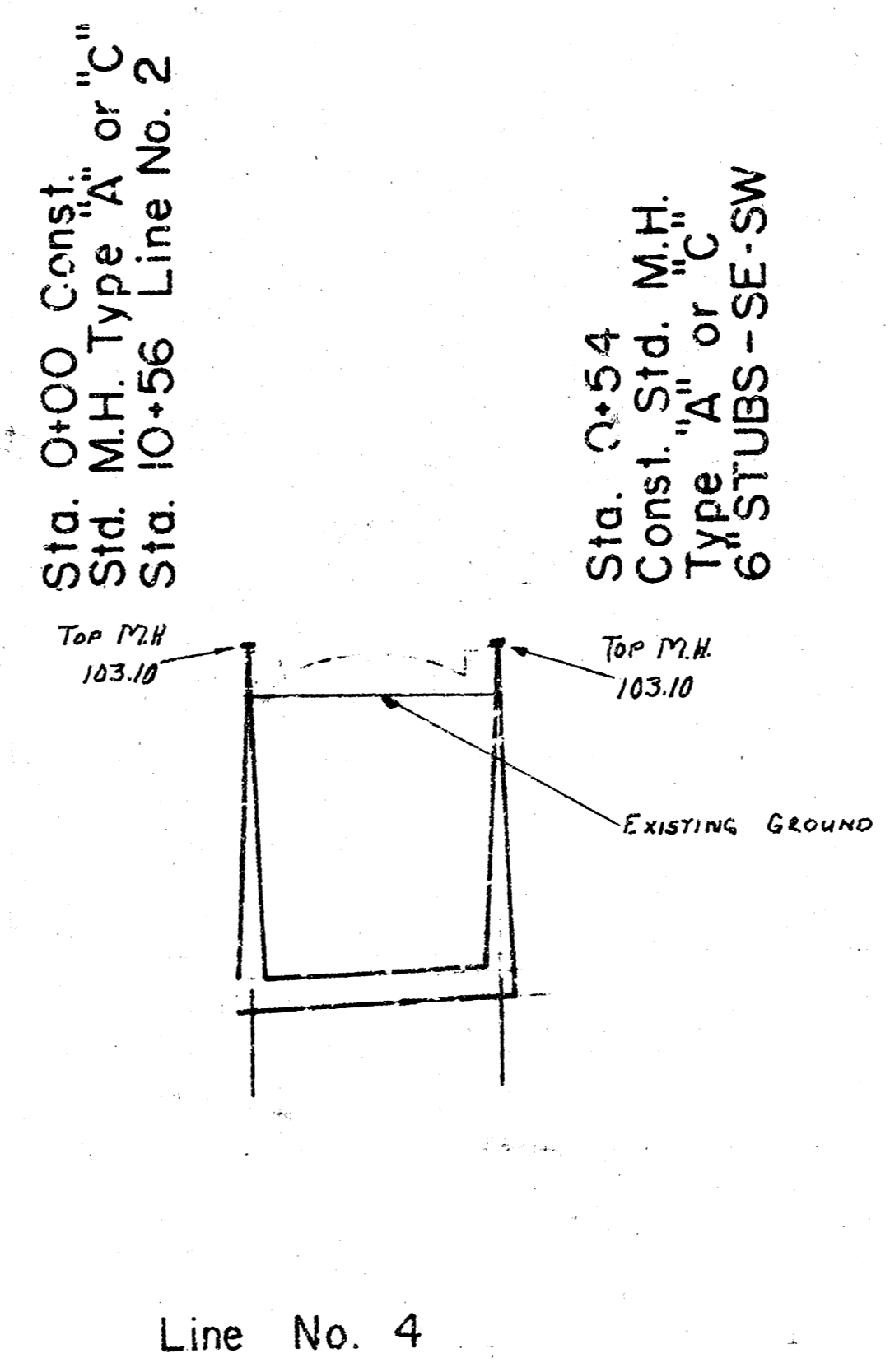
SCALE
PLAN 1"=40'
PROFILE 1"=40' HOR.
1"=5' VER.

105
100
95
90
85



54 LIN. FT. OF A.B.S. COMPOSITE PIPE AT 0.25 %

34.97 Elev. Out
34.07 Elev. In
34.07 Elev. Line 2
0
34.20 Elev.
0.5



54 LIN. FT. 8" A.B.S. COMPOSITE PIPE AT 0.25 %

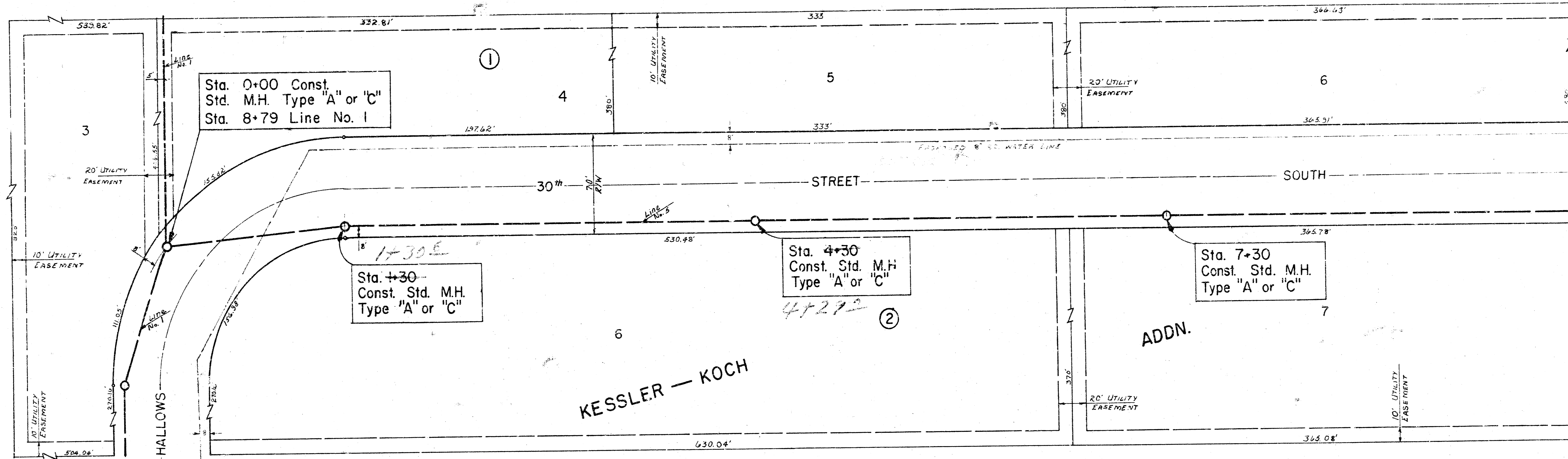
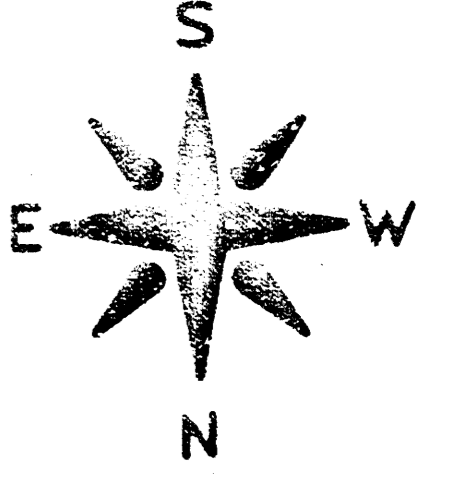
34.42 Elev. Out
33.72 Elev. In
33.72 Elev. Line 2
0
33.86 Elev.
0.5

105
100
95
90
85

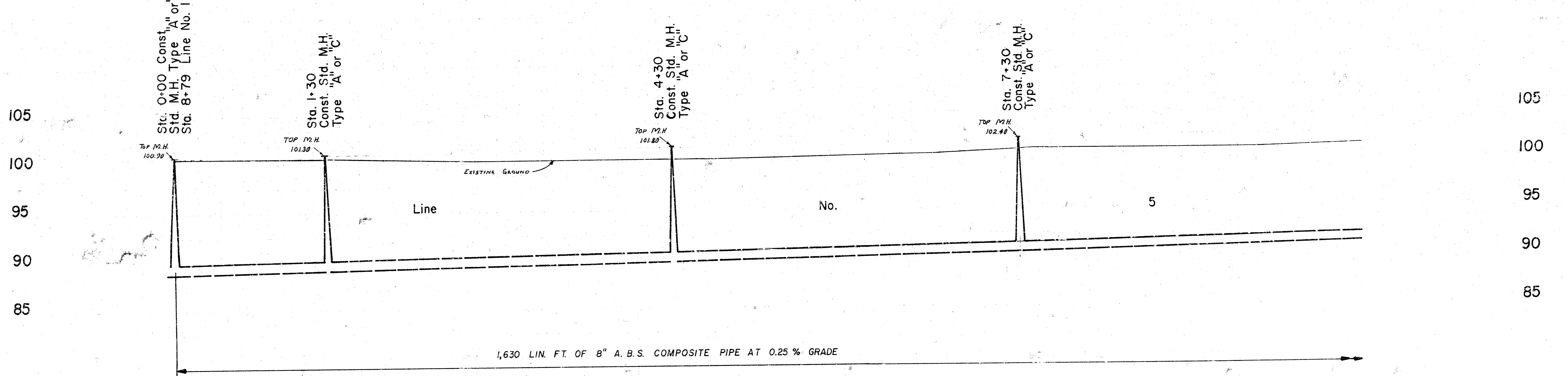
LAT. 80, SOUTHWEST INTERCEPTOR
CITY OF WICHITA, KANSAS
R. W. LINN CITY ENGINEER
DATE: Sept 26
SHEET 5 of 10
PROJ. NO. DBKL575072

5/10

B.M. 103.63 R.R. SPK. E. SIDE P.POLE ON WEST ST. APPROX. 35' S. OF LINE NO. 6
 B.M. 103.47 CITY STD. 53' E. & 44' S. OF BOTH WEST ST. & 31ST ST. SO.



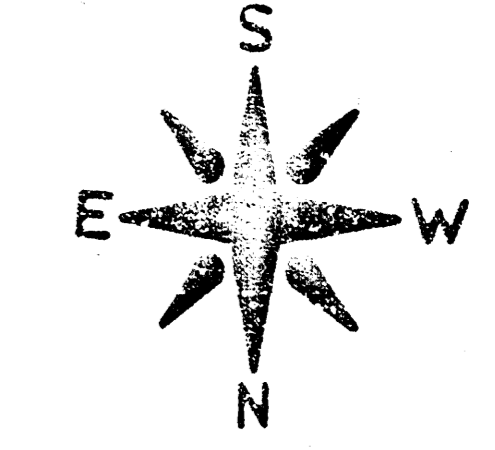
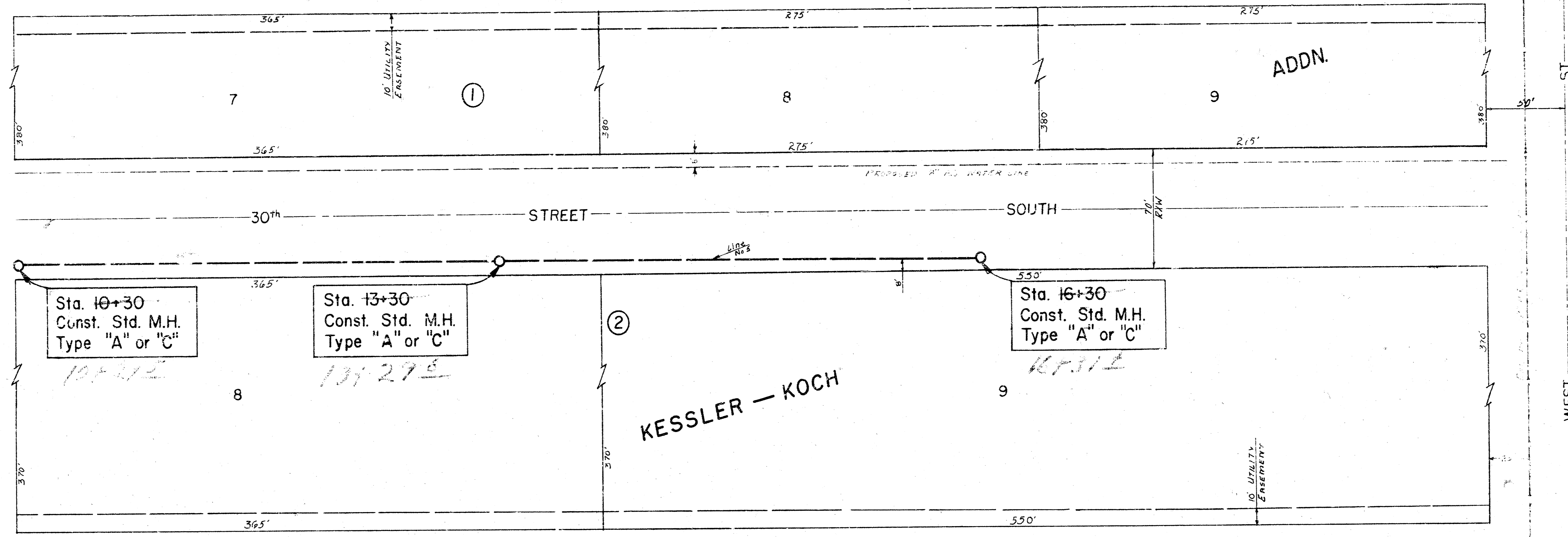
SCALE
 PLAN: 1"=40'
 PROFILE: 1"=40' HOR.
 1"=5' VER.



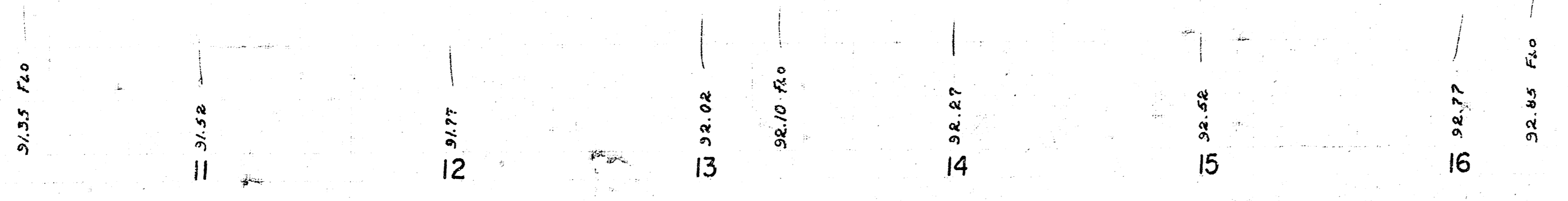
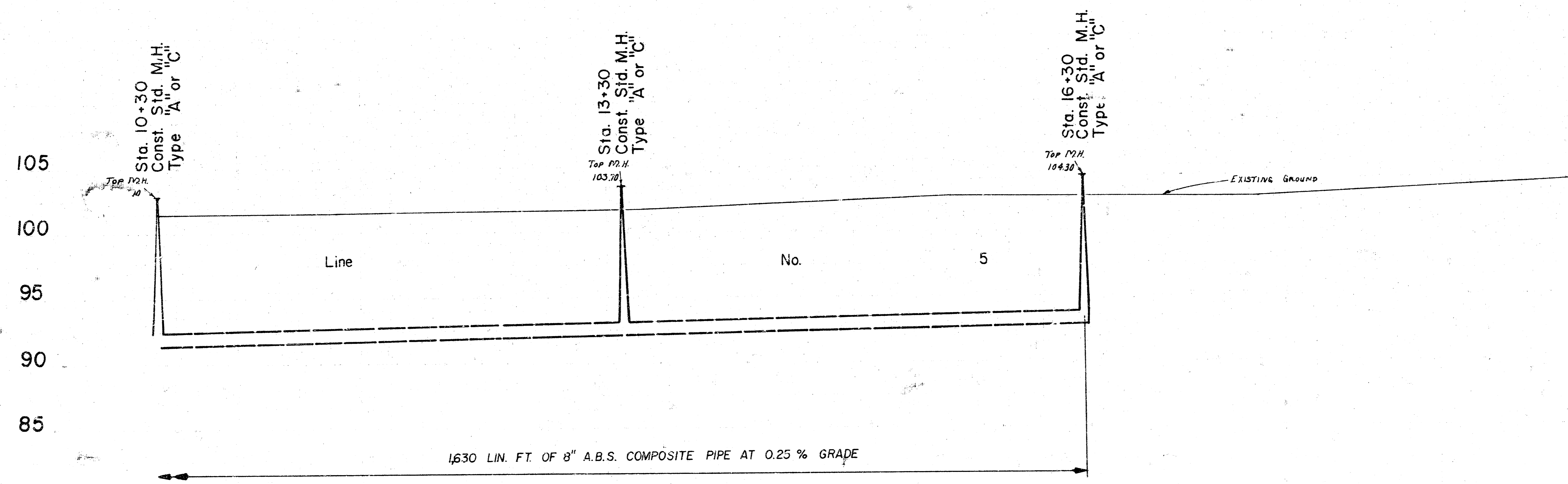
- 88.67 Elev Out
- 88.67 Elev In
- 88.67 Elev Line No. 1
- 84.52
- 89.00 Elev Out
- 89.00 Elev In
- 89.00 Elev Line No. 1
- 85.27
- 85.52
- 88.77
- 88.85 Elev
- 90.02
- 90.27
- 90.52
- 90.60 Elev
- 90.77

LAT. 80, SOUTHWEST INTERCEPTOR
 CITY OF WICHITA, KANSAS
 R. W. LINN
 CITY ENGINEER
 DATE: Sept 76
 SHEET 6 of 10
 PROJ. NO. DBKL575072

B.M. 103.63 R.R. SPK. E. SIDE P. POLE. ON W. SIDE OF WEST ST. APPROX. 35' S. OF LINE NO. 6
 B.M. 103.47 CITY STD. 53' E. & 44' S. OF E. OF BOTH WEST ST. & 31ST ST. SO.



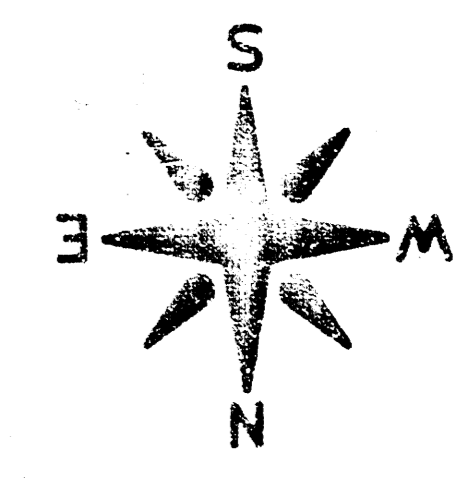
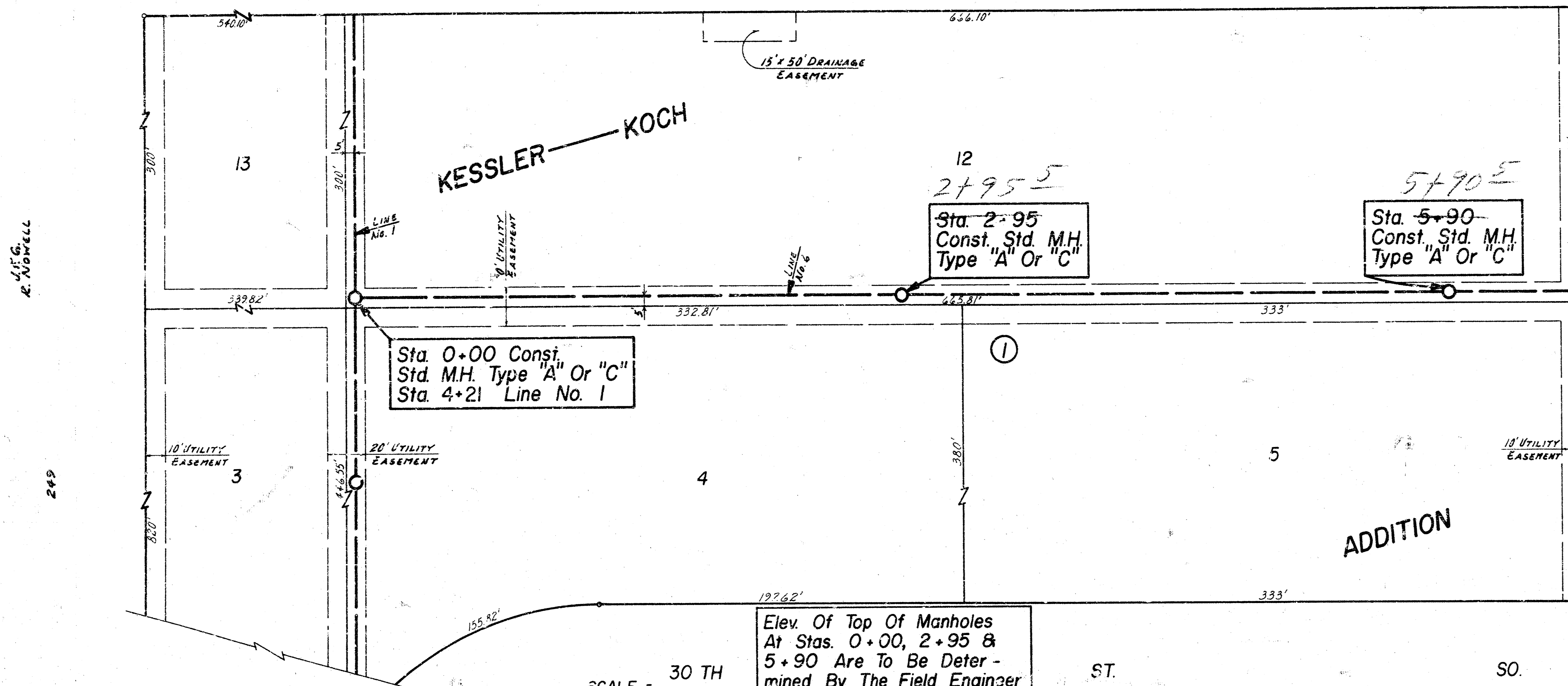
SCALE
 PLAN: 1" = 40'
 PROFILE: 1" = 40' HOR.
 1" = 5' VER.



LAT. 80, SOUTHWEST INTERCEPTOR
 CITY OF WICHITA, KANSAS
 R. W. LINN CITY ENGINEER
 DATE: Sept 76 PROJ. NO. DBKL575072
 SHEET 7 of 10

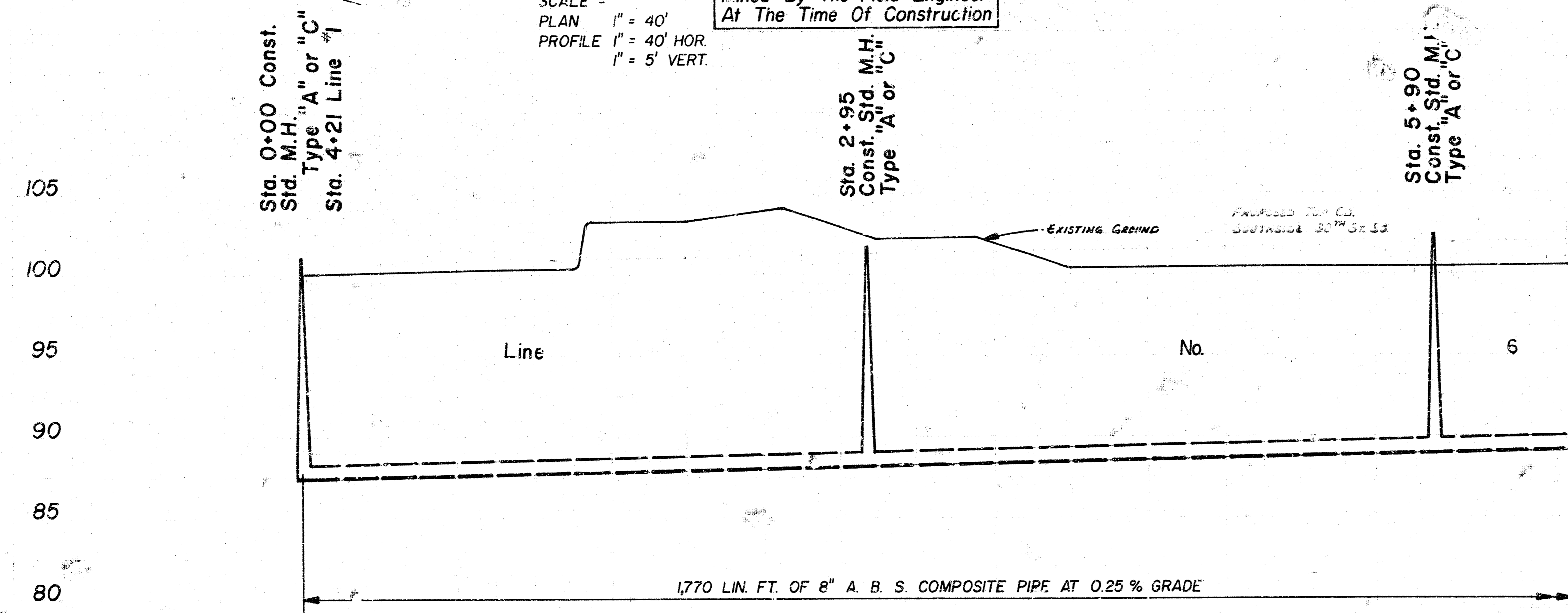
B.M. 103.63 RR. SPK. E. SIDE P. POLE ON W. SIDE OF WEST ST. APPROX. 35' S. OF LINE NO. 6
 B.M. 103.47 CITY STD., 53' E & 44' S. OF C. OF BOTH WEST ST. & 31 ST. SO.

31 ST. ST. SO.



SCALE = 30 TH
 PLAN 1" = 40'
 PROFILE 1" = 40' HOR.
 1" = 5' VERT.

Elev. Of Top Of Manholes At Stas. 0+00, 2+95 & 5+90 Are To Be Determined By The Field Engineer At The Time Of Construction



Sta. 0+00 Const. Std. M.H. Type "A" or "C" Sta. 4+21 Line No. 1

Sta. 2+95 Const. Std. M.H. Type "A" or "C"

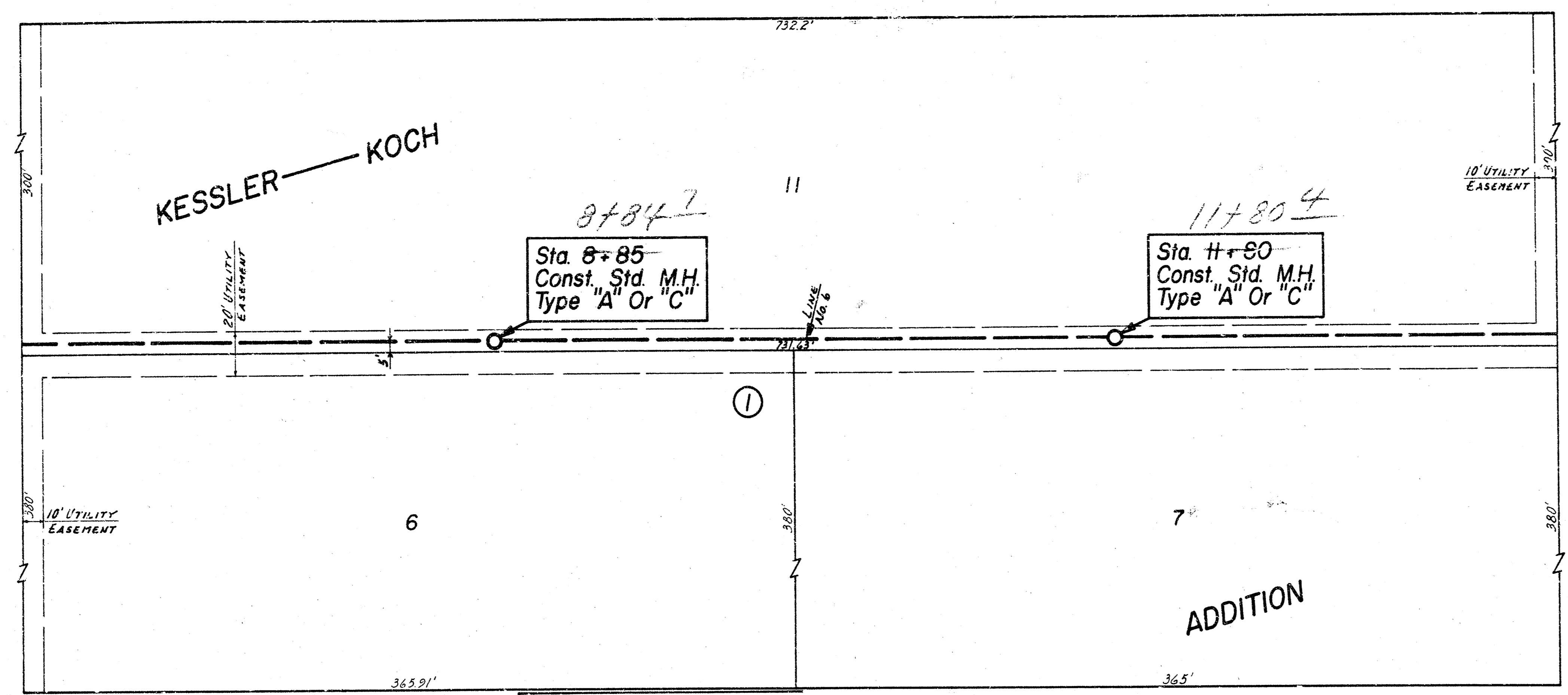
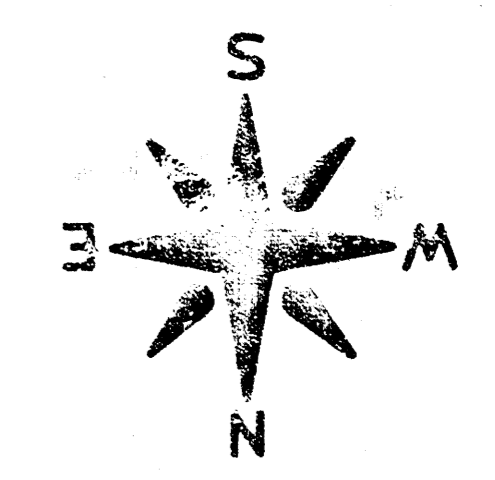
Sta. 5+90 Const. Std. M.H. Type "A" or "C"

0	1	2	3	4	5	6
87.23 Elev. 0+00 87.43 Elev. 4+21 5+23 FLO LINE #1	87.48	87.23	88.14 Elev. 2+95 88.18	88.43	88.68	88.90 Elev. 5+90 88.93

LAT. 80, SOUTHWEST INTERCEPTOR
 CITY OF WICHITA, KANSAS
 R. W. LINN CITY ENGINEER
 DATE 5-1-76 PROJ. NO. DBKL575072
 SHEET 8 of 10

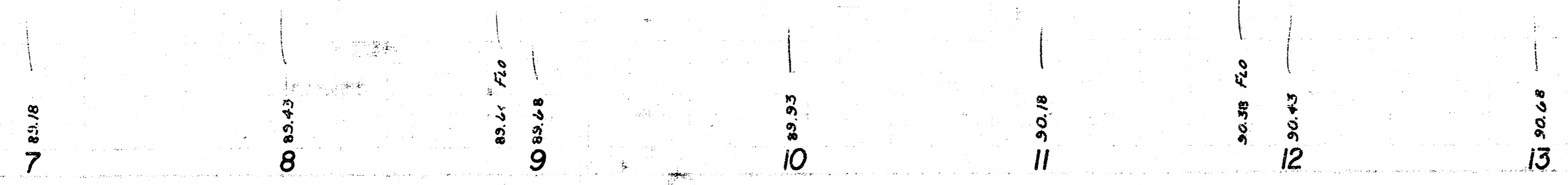
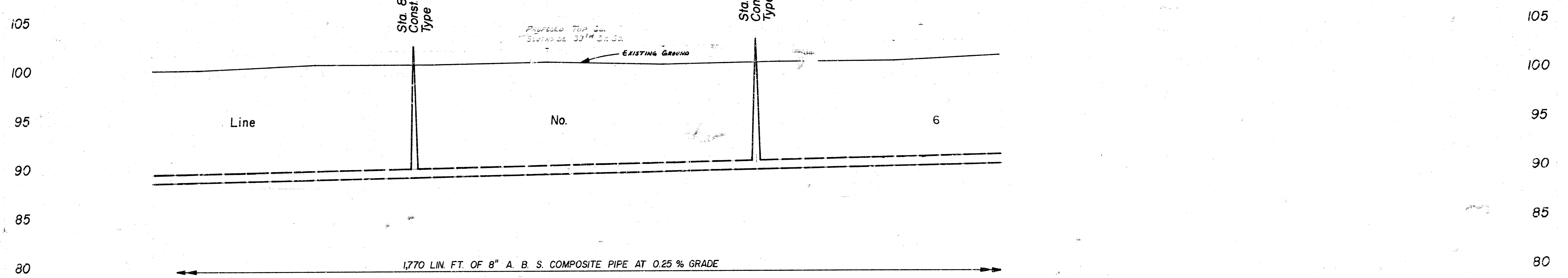
B.M. 103.63 R.R. SPK. E. SIDE P. POLE ON W. SIDE OF WEST ST. APPROX. 35' S. OF LINE NO. 6
 B.M. 103.47 CITY STD., 53' E & 44' S OF E. OF BOTH WEST ST. & 31 ST. SO.

31 ST. ST. 50.



SCALE =
 PLAN 1" = 40'
 PROFILE 1" = 40' HOR.
 1" = 5' VERT.

Elev. Of Top Of Manholes
 At Stas. 8+85 & 11+80
 Are To Be Determined By
 The Field Engineer At The
 Time Of Construction



LAT. 80, SOUTHWEST INTERCEPTOR
 CITY OF WICHITA, KANSAS
 R. W. LINN CITY ENGINEER
 DATE: Sept 76 PROJ. NO. DBKL575072
 SHEET 9 of 10

