

B.M. 149.83 "4" on top of curb at west end of radius on N.W. corner of Northwest Parkway and Morgantown Lane  
 B.M. 139.70 "D" in Mid-Kansas on top of north curb at west end of radius, Melrose Lane and Brunswick Lane

1+19±  
 Sta 1+25  
 Const. Std. M.H.  
 Type 'A' or 'C'  
 6" Stub West

2+77±  
 Sta 2+82  
 End Construction  
 Plug Pipe

Curve Data:  
 R = 974.09'  
 Δ = 27° 23'

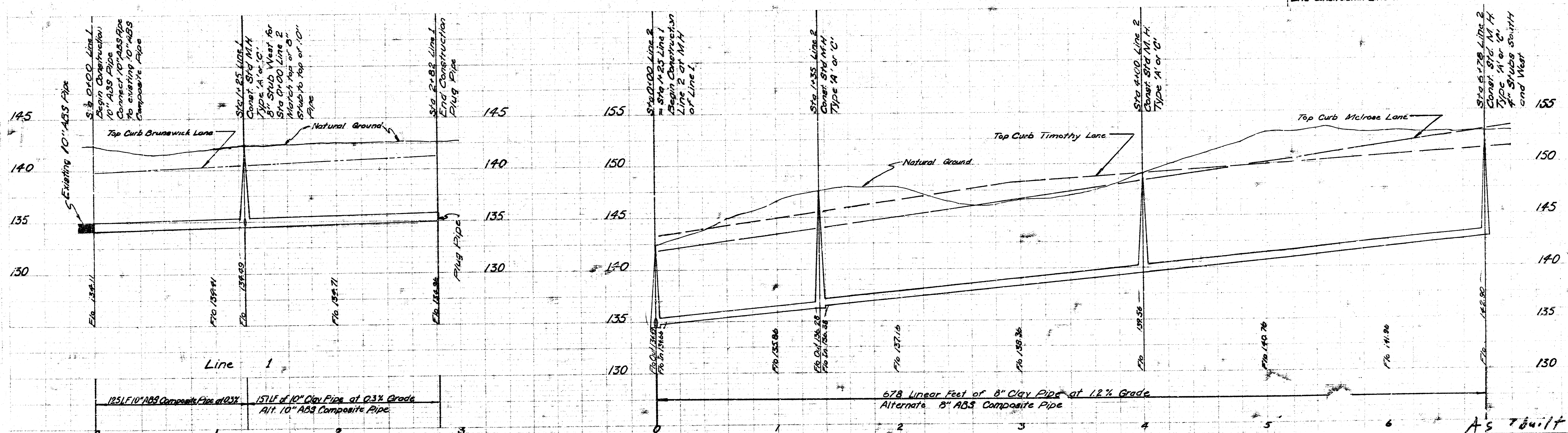
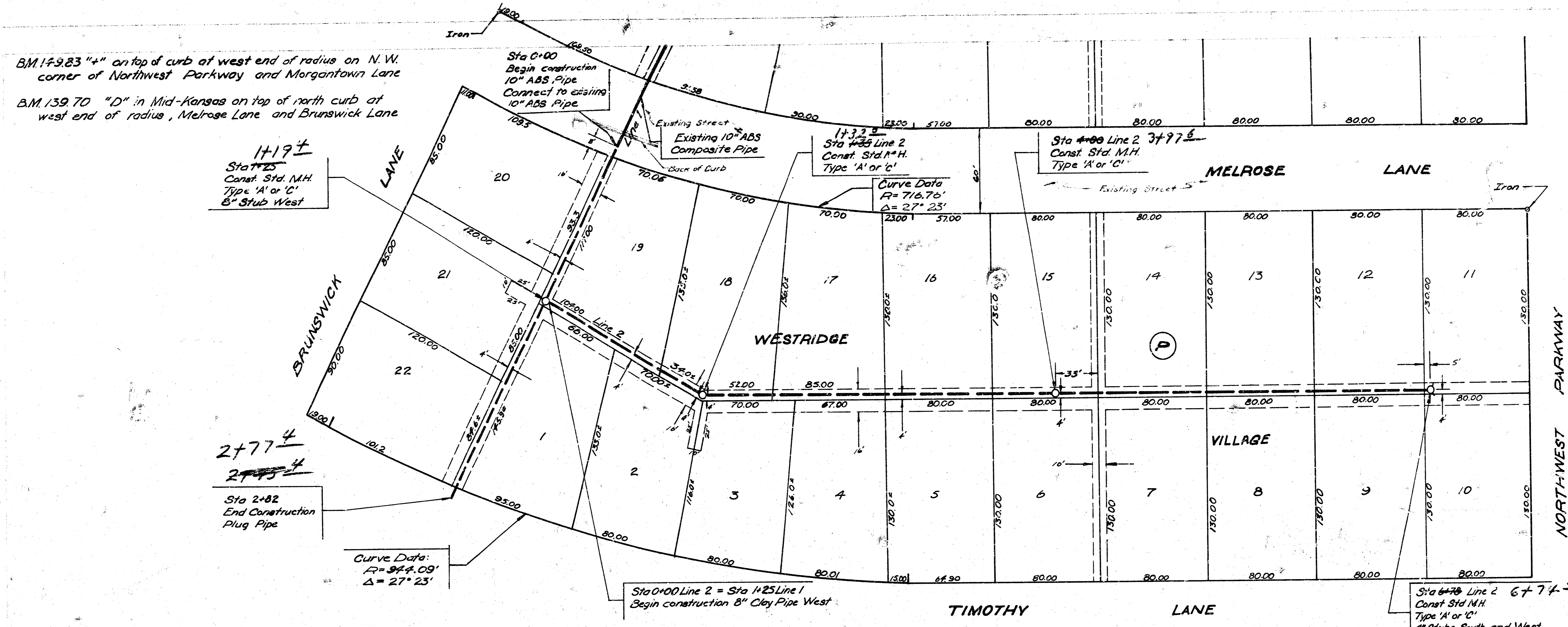
1+32±  
 Sta 1+35 Line 2  
 Const. Std. M.H.  
 Type 'A' or 'C'

Sta 4+00 Line 2 3+97±  
 Const. Std. M.H.  
 Type 'A' or 'C'

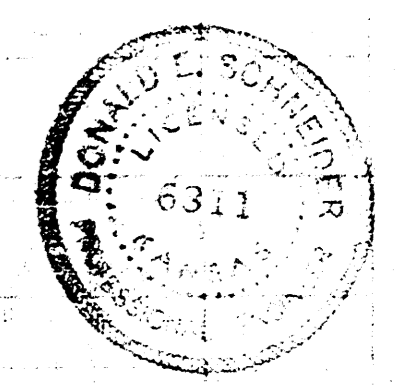
Sta 6+70 Line 2 6+74±  
 Const. Std. M.H.  
 Type 'A' or 'C'  
 4" Stubs South and West  
 End Construction Line 2

Sta 0+00 Line 2 = Sta 1+25 Line 1  
 Begin construction 8" Clay Pipe West

Plan Scale: 1" = 40'  
 Profile Scale: 1" = 40' Horiz  
 1" = 5' Vert



**LAT 84, SW INTERCEPTOR SEWER**  
 CITY OF WICHITA, KANSAS  
 R. W. LINN CITY ENGINEER  
 DATE: JAN. 1977 Project Number: DBK1576022



AS T&E 4-8-77