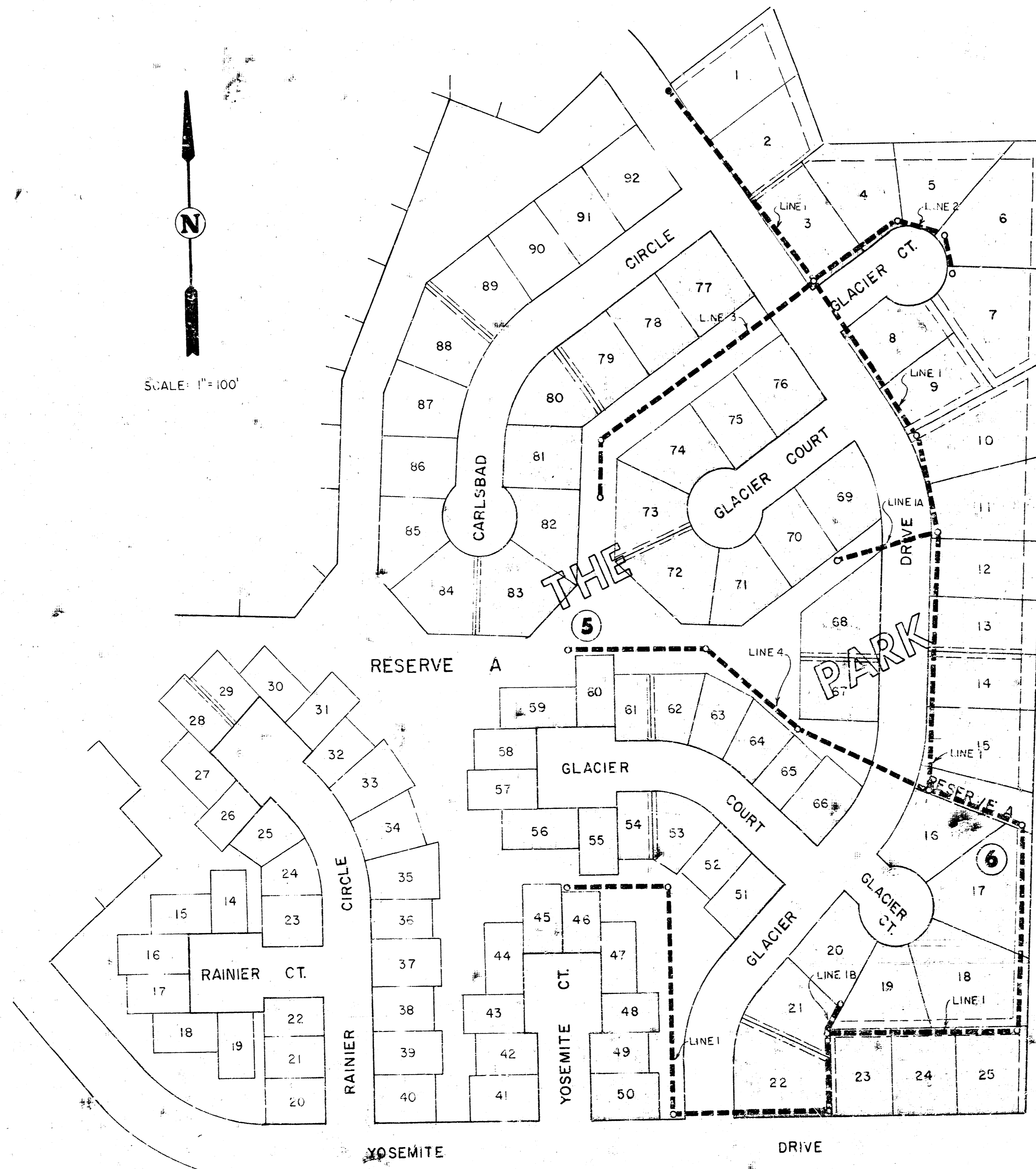


LATERAL 89, SW INTERCEPTOR SEWER

PROJECT NO.
468-76-245-80260-000-000-001

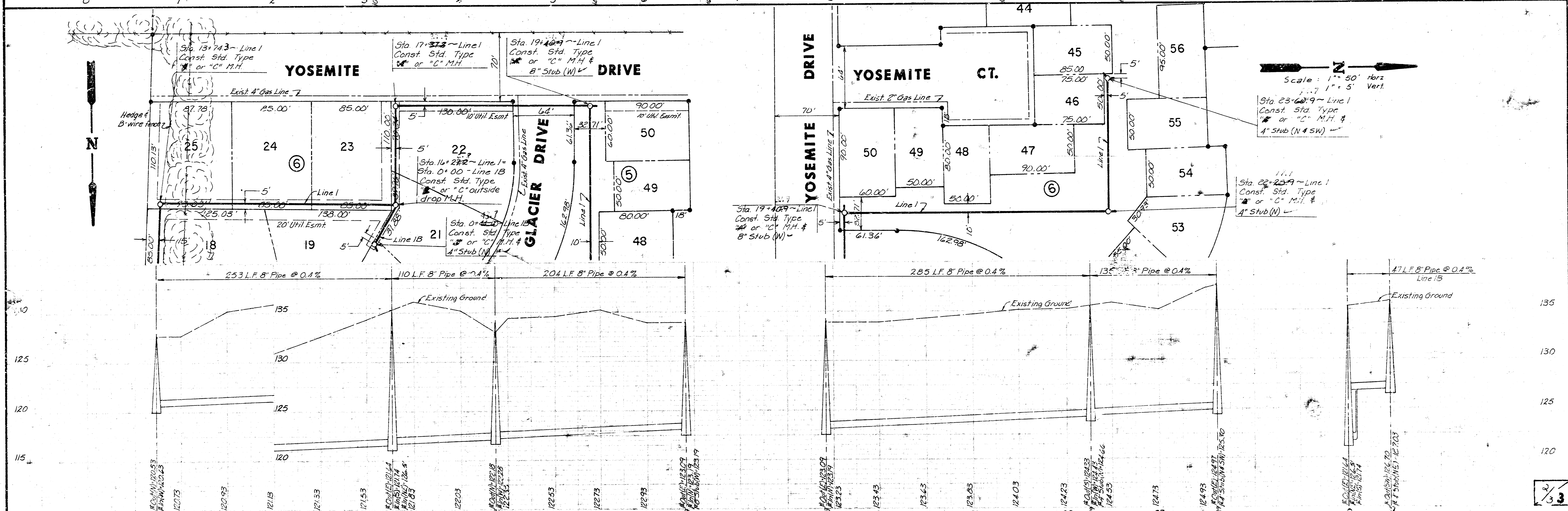
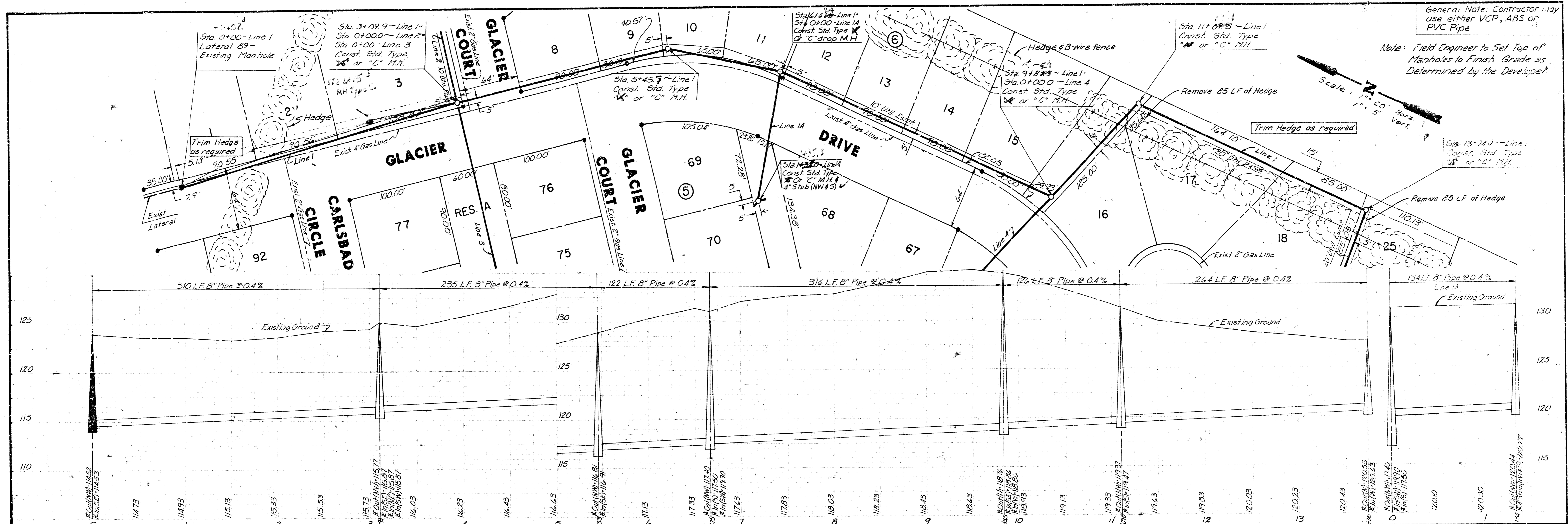
CITY OF WICHITA, KANSAS
DEAN SELLERS, ACTING CITY ENGINEER

NOTE: FIELD ENGINEER SHALL SET TOPS OF MANHOLES TO PROPOSED FINISHED GRADE AS DETERMINED BY THE ENGINEER. RISERS AND ADDITIONAL SIZES SHALL BE DETERMINED BY THIS PROJECT TO SERVE INDIVIDUAL LOTS AS ORDERED BY THE FIELD ENGINEER. RISERS CONSTRUCTION SHALL CONFORM TO THE REQUIREMENTS AS SET FORTH IN STANDARD RISER DEATHS OF THE CITY OF WICHITA. THE ENDS OF THE RISERS SHALL BE MARKED BY PASTEL GREEN PLASTIC COLORED CAPS 12" HIGH OF 12" RADIUS AND TO THE ROAD SURFACE AS THE FINISH IS UNPAVED SURFACE. THE COLORED CAPS WILL BE VISIBLE FROM THE ROAD SURFACE. ALL RISERS SHALL BE CONSTRUCTED USING S.D.R. 35 A.P.S. OR P.A.C. PIPE. FITTINGS OF SIZES AND TYPES OF RISERS SHALL BE SUCH THAT THE FACILITY OF CONNECTION OF WAREHOUSE DRAINS TO THESE RISERS ARE DEVELOPED.

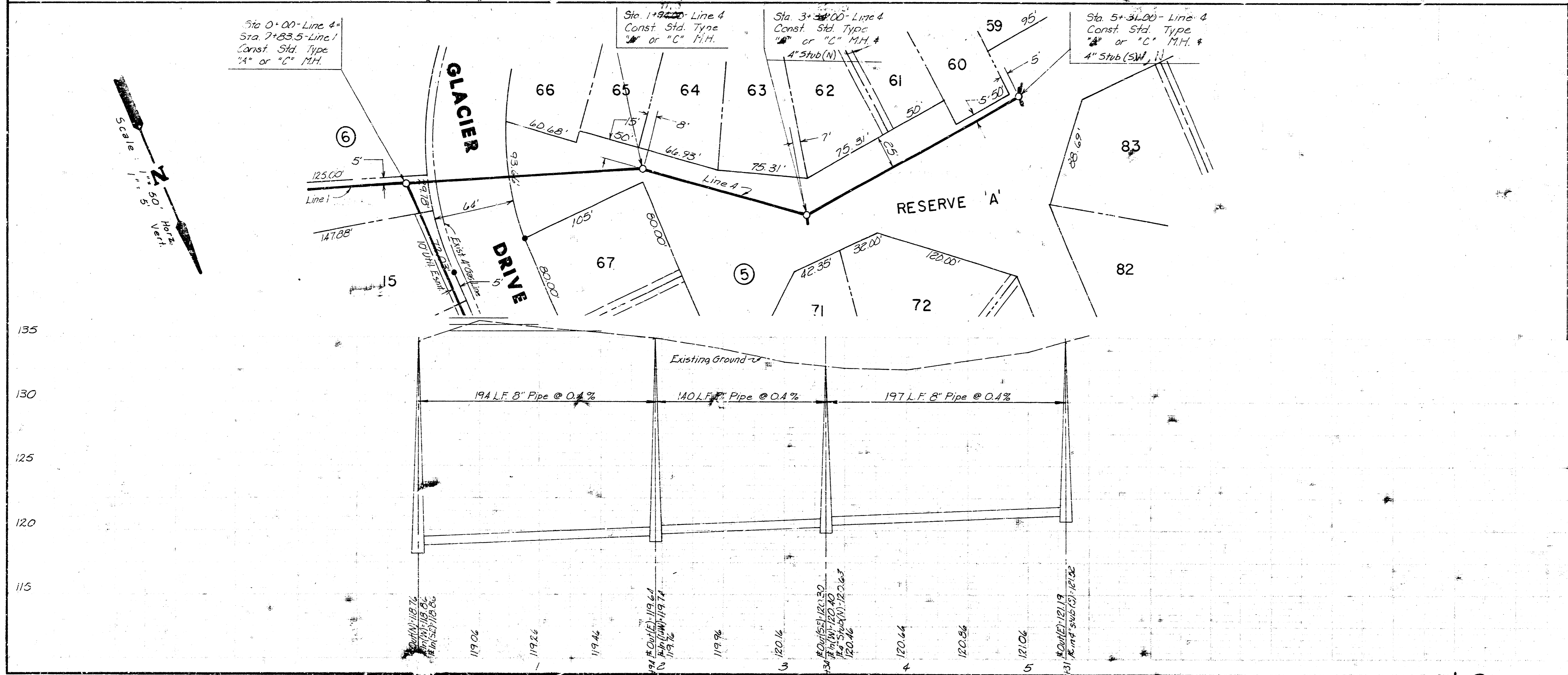
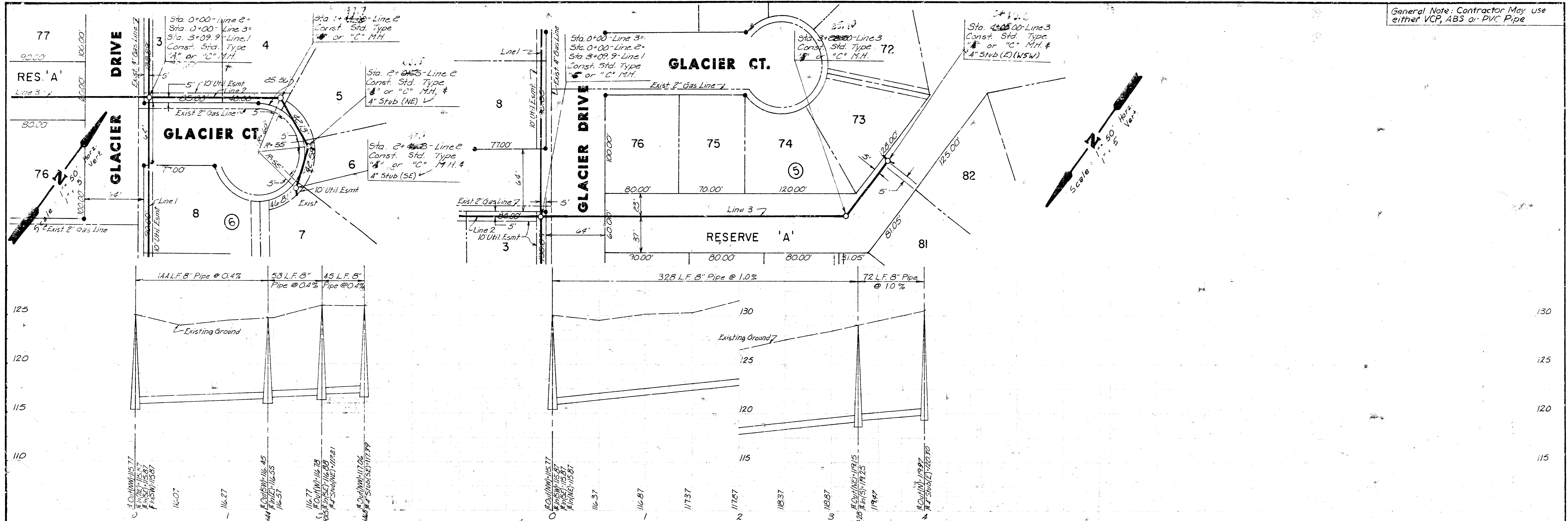


INDEX TO DRAWINGS

SHT. NO	DESCRIPTION
1	TITLE SHEET
2	LINE 1, 1A, 1B
3	LINE 2, 3, 4



General Note: Contractor May use either VCP, ABS or PVC Pipe



- BM 1: CITY STD. 36" S. & 24" E. OF 1/4 SEC. COR. SEVILLE - PAWNEE ELEV. = 113.76
- BM 2: TOP 3'-40" NAILS IN W. FACE GUARD POST S.E. COR. WOOD BRIDGE SEVILLE - PAWNEE ELEV. = 120.05
- BM 3: R.R. SPK. W FACE P.P. 17' ± W-WL YELLOWSTONE NL. PAWNEE ELEV. = 115.42
- BM 4: "C" TOP N. CURB GLACIER ON PL N-S BETWEEN HOUSE 2530 & 2534 ELEV. = 124.80