

Sta 5+00 5700.2  
Const. Std. M.H.  
Type "A" or "C"  
Sta 0+00 Line 2A

Sta 5+76  
Const. Std. M.H.  
Type "A" or "C"  
Install 4" Stub S.E.  
End Line 2

Sta 3+41 3110.1  
Const. Std. M.H.  
Type "A" or "C"  
Install 4" Stub N.W.  
End Line 1

Sta 0+99  
Const. Std. M.H.  
Type "A" or "C"

Sta 0+00 Line 1  
Begin 8" Pipe

Sta 0+00  
Const. Std. M.H.  
Type "A" or "C"  
Begin Line 2

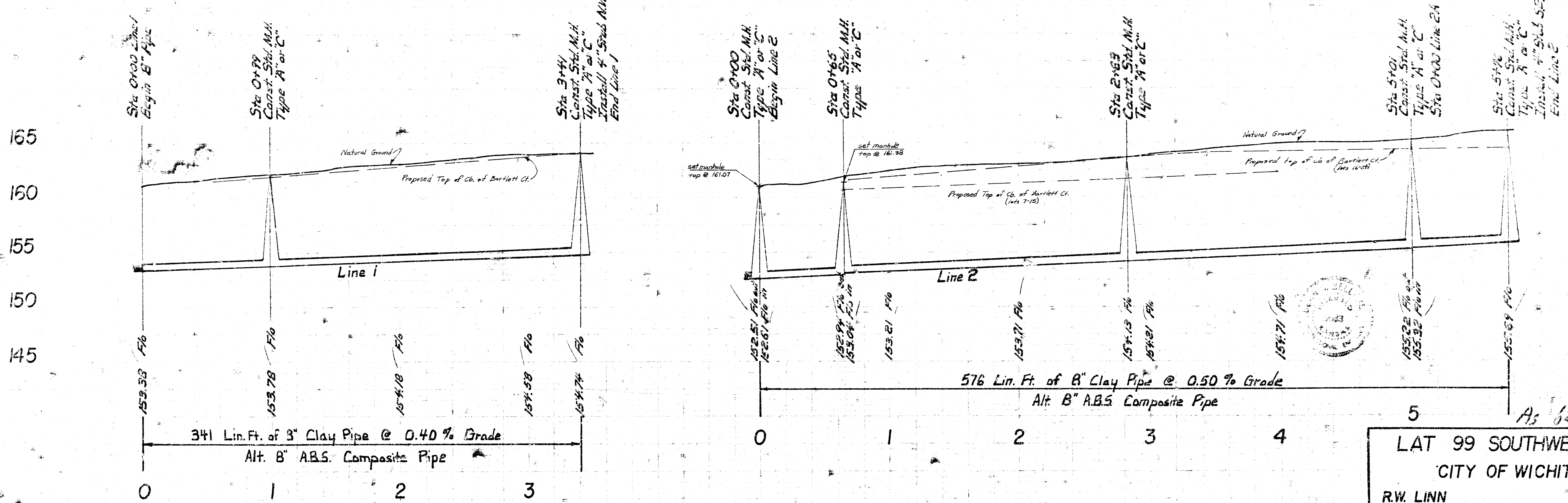
Sta 0+65 0777.2  
Const. Std. M.H.  
Type "A" or "C"

Sta 2+83 2132.2  
Const. Std. M.H.  
Type "A" or "C"

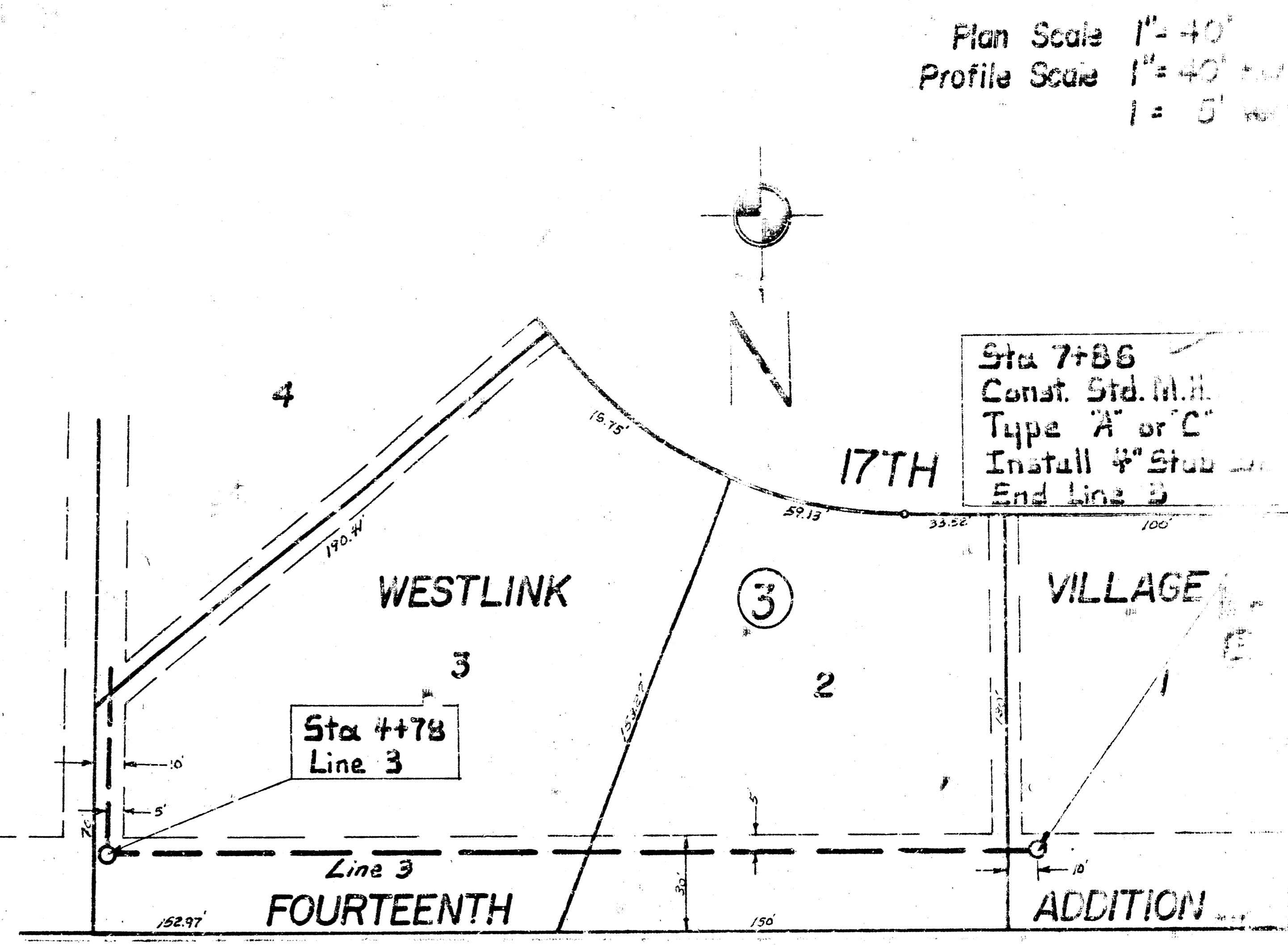
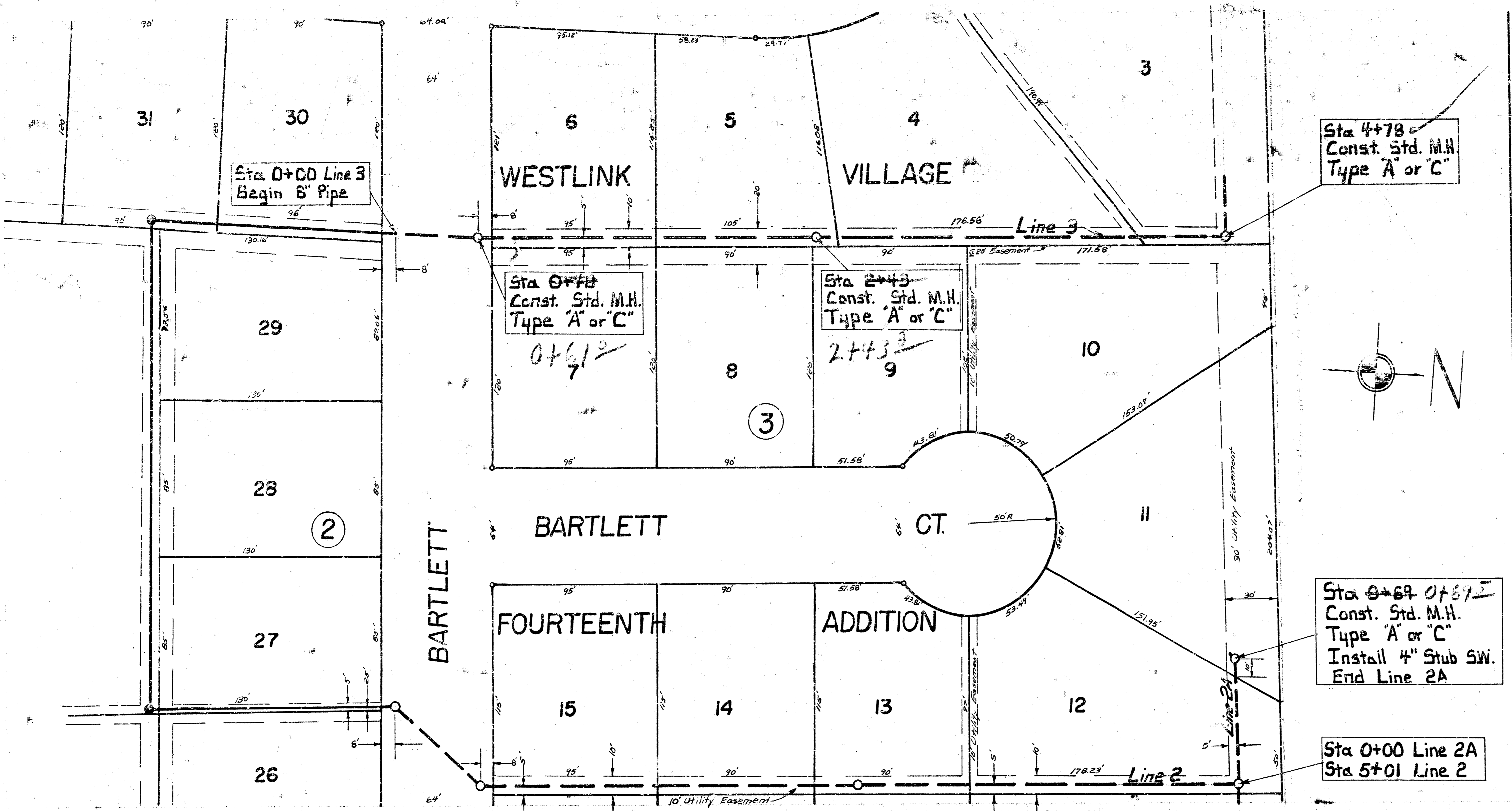
Plan Scale 1" = 40'  
Profile Scale 1" = 5'

NOTE: PIPE FROM STATION 0+00 TO 0+10 ON LINE NO. 1 AND FROM STATION 0+00 TO 0+10 ON LINE NO. 2 SHALL BE SAME TYPE OF PIPE AS PIPE SOUTH OF STATIONS 0+00 WHICH IS TO BE INSTALLED BY THE CONTRACTOR FOR LATERAL TOP, SOUTHWEST INTERCEPTOR.

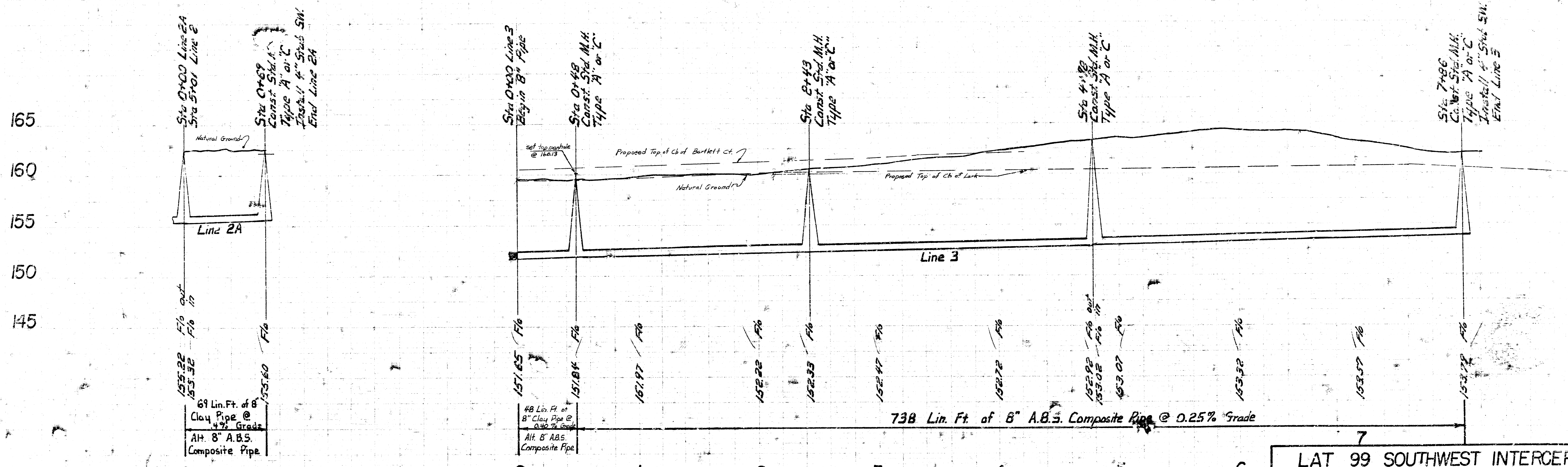
BM 162.11 R.R. Spike W. fc. P.P. N.W. cor. Maize Rd. & Bartlett  
BM 164.49 R.R. Spike W. fc. P.P. S.W. cor. 17th & Maize Rd.



LAT 99 SOUTHWEST INTERCEPTOR  
CITY OF WICHITA, KANSAS  
R.W. LINN CITY ENGINEER  
DATE: PROJECT NUMBER: DRK157



Plan Scale 1" = 40'  
 Profile Scale 1" = 40'  
 1" = 5'



69 Lin. Ft. of 8" Clay Pipe @ 4% Grade  
 AH 8" A.B.S. Composite Pipe

48 Lin. Ft. of 8" Clay Pipe @ 0.40% Grade  
 AH 8" A.B.S. Composite Pipe

738 Lin. Ft. of 8" A.B.S. Composite Pipe @ 0.25% Grade

LAT 99 SOUTHWEST INTERCEP