

BM 157.04 R.R. Spike N. to P.P. approx. 200' S. & 100' W. of N.W. cor. Nantucket & Lark
(4th P.P. W. Maize Rd on 13th)

Proposed Sanitary Sewer
Lat 106 Southwest Interceptor

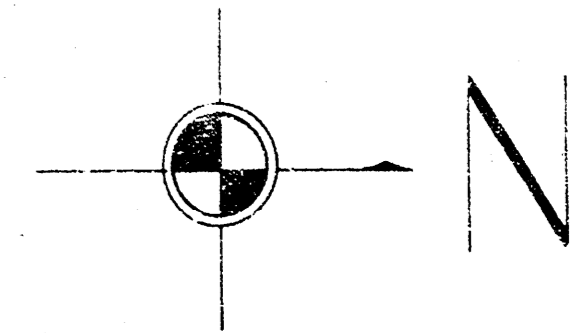
Sta 0+00
Begin 8" Pipe

Sta 1+36
Const. Std. M.H.
Type "A" or "C"

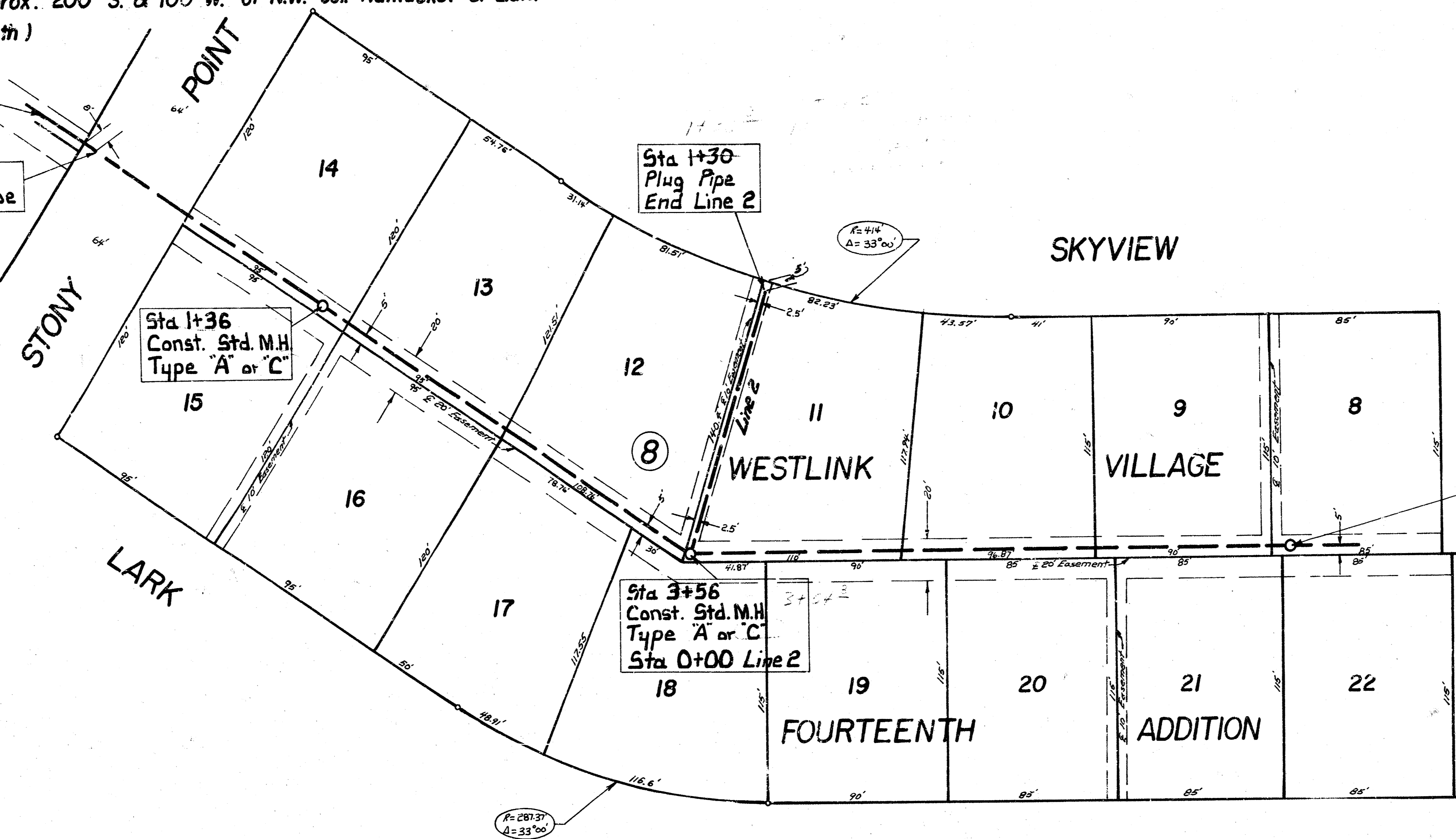
Sta 1+30
Plug Pipe
End Line 2

Sta 3+56
Const. Std. M.H.
Type "A" or "C"
Sta 0+00 Line 2

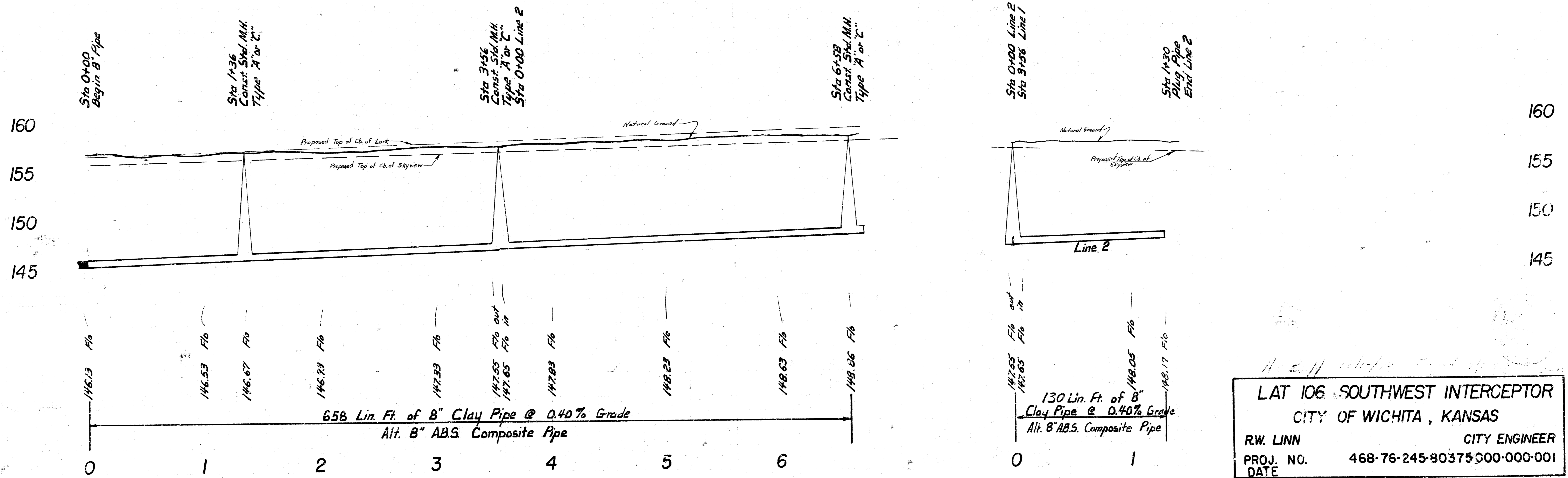
Sta 6+58
Const. Std. M.H.
Type "A" or "C"



Plan Scale 1" = 40'
Profile Scale 1" = 40' Horiz.
1" = 5' Vert.

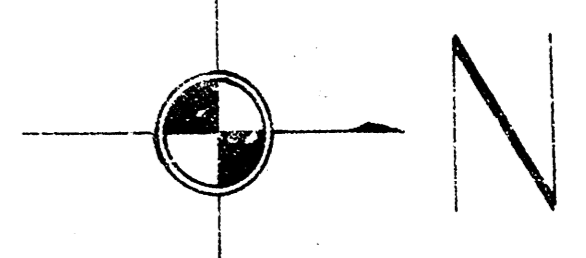


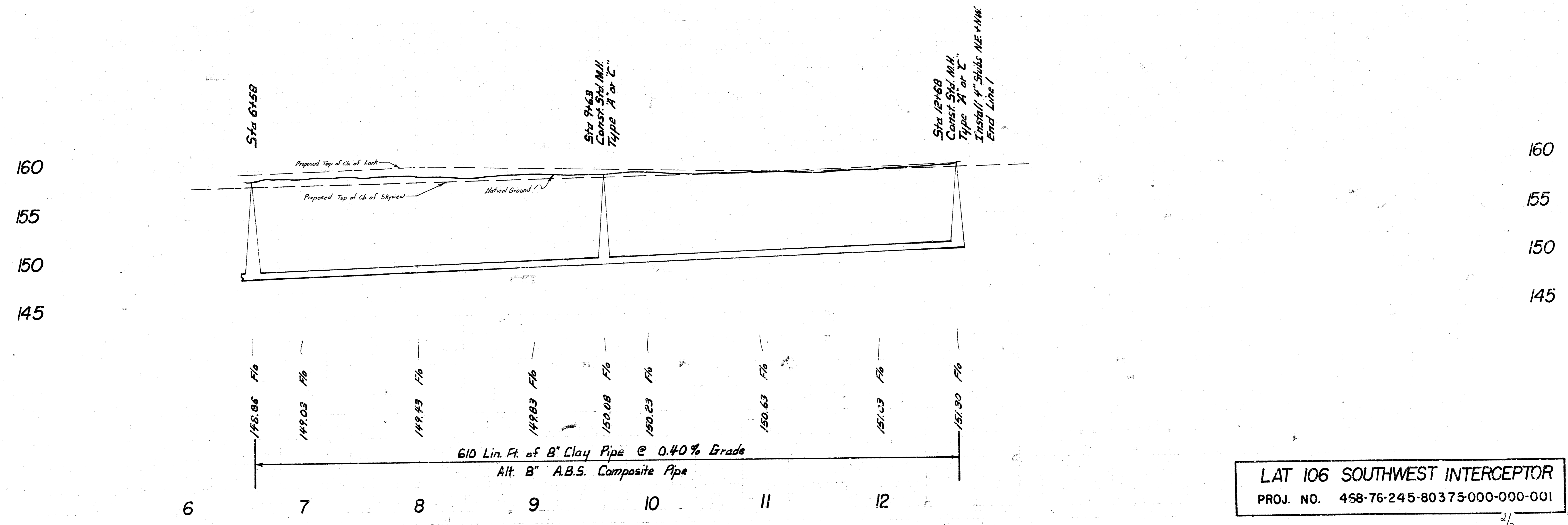
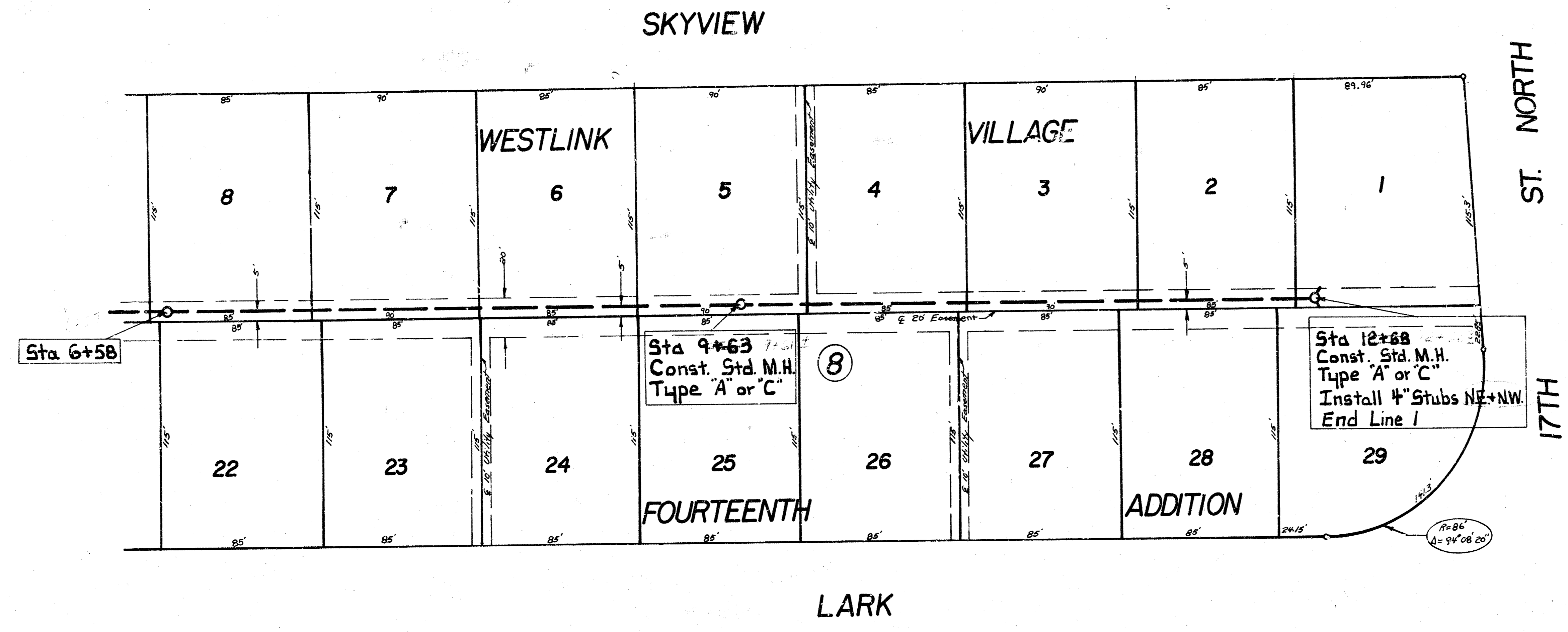
NOTE: PIPE BETWEEN STATION 0 + 00 AND STATION 1 + 36 ON THIS PROJECT SHALL BE SAME TYPE OF PIPE AS THAT WHICH IS TO BE INSTALLED BY CONTRACTOR FOR CONSTRUCTING LATERAL 105, SOUTH-WEST INTERCEPTOR.



LAT 106 SOUTHWEST INTERCEPTOR
CITY OF WICHITA, KANSAS
R.W. LINN CITY ENGINEER
PROJ. NO. 468-76-245-80375-000-000-001
DATE

T. L. Arnow
 Bruce Palmer
 August 79
 August 77


 Plan Scale 1" = 40'
 Profile Scale 1" = 40' Horiz.
 1" = 5' Vert.



LAT 106 SOUTHWEST INTERCEPTOR
 PROJ. NO. 458-76-245-80375-000-000-001