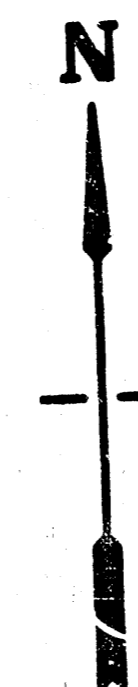
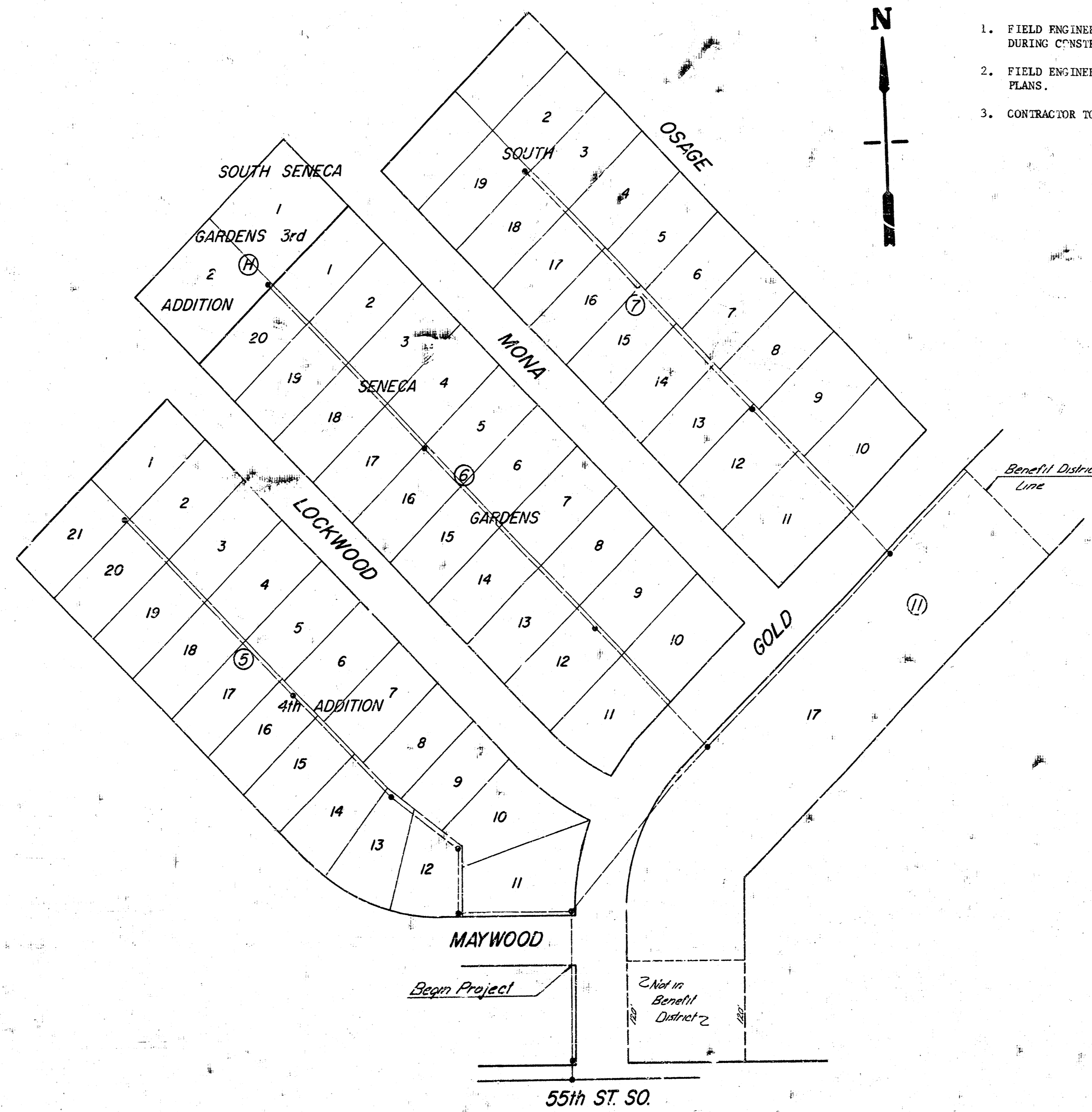


Lat 141, Southwest Interceptor
 468-76-245-80748-000-000-001

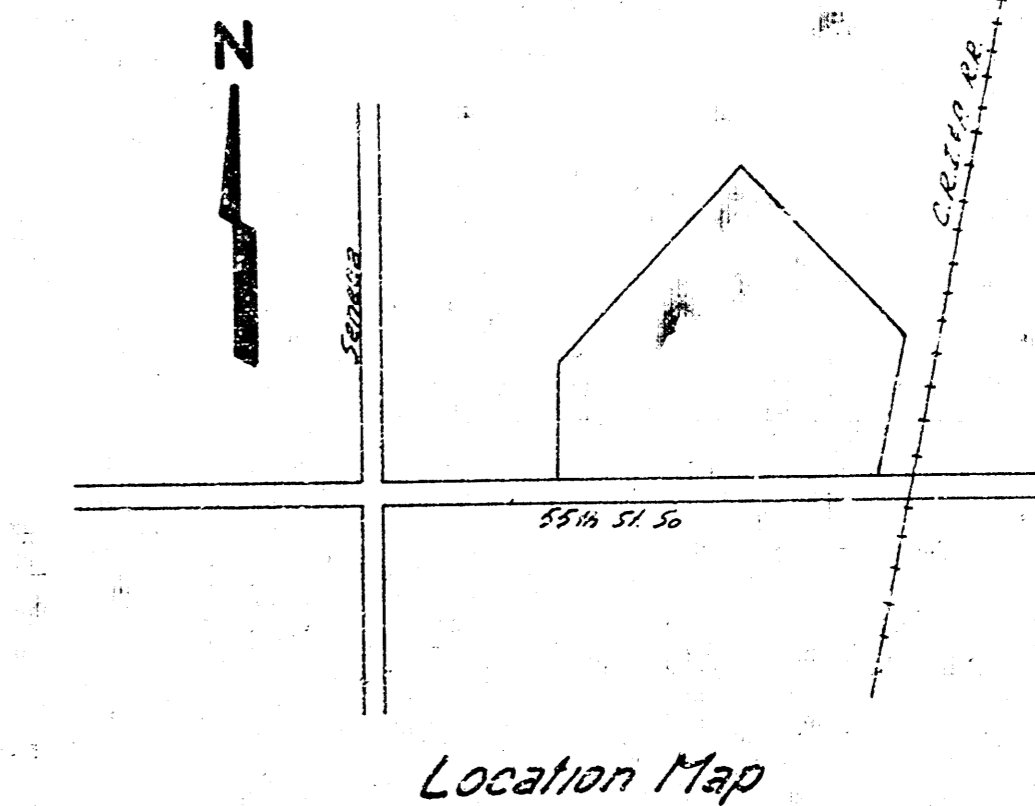
CITY of WICHITA, KANSAS
 DEPT. of PUBLIC WORKS-ENGINEERING DIV.
 DEAN S. SELLERS-ACTING CITY ENGINEER

DATE _____

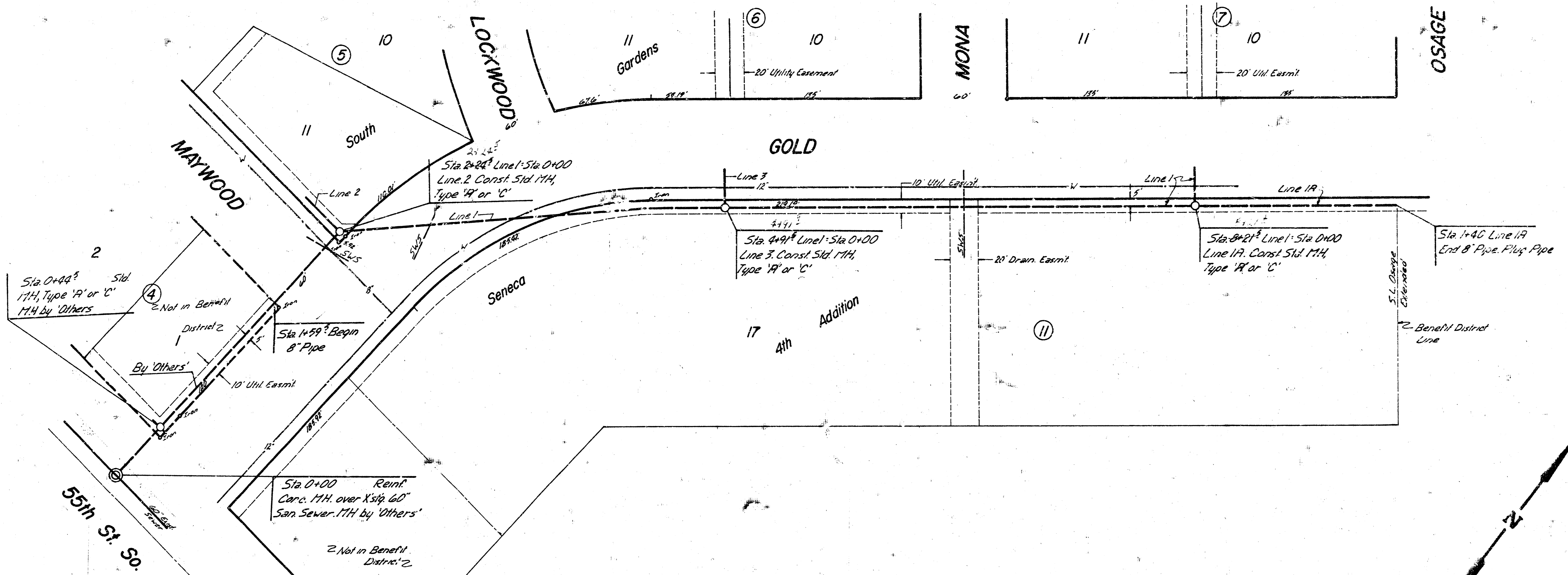


GENERAL NOTES

1. FIELD ENGINEER TO TAKE TIES TO ANY IRONS THAT MAY BE DISTURBED DURING CONSTRUCTION AND REPLACE ANY IRONS DESTROYED DURING CONSTRUCTION.
2. FIELD ENGINEER TO SET TOP OF MANHOLES TO FINISH GRADE AS DETERMINED BY THE DEVELOPER UNLESS OTHERWISE NOTED ON PLANS.
3. CONTRACTOR TO CONTACT UTILITY COMPANIES FOR LOCATION OF ANY UNDERGROUND LINES BEFORE BEGINNING CONSTRUCTION.

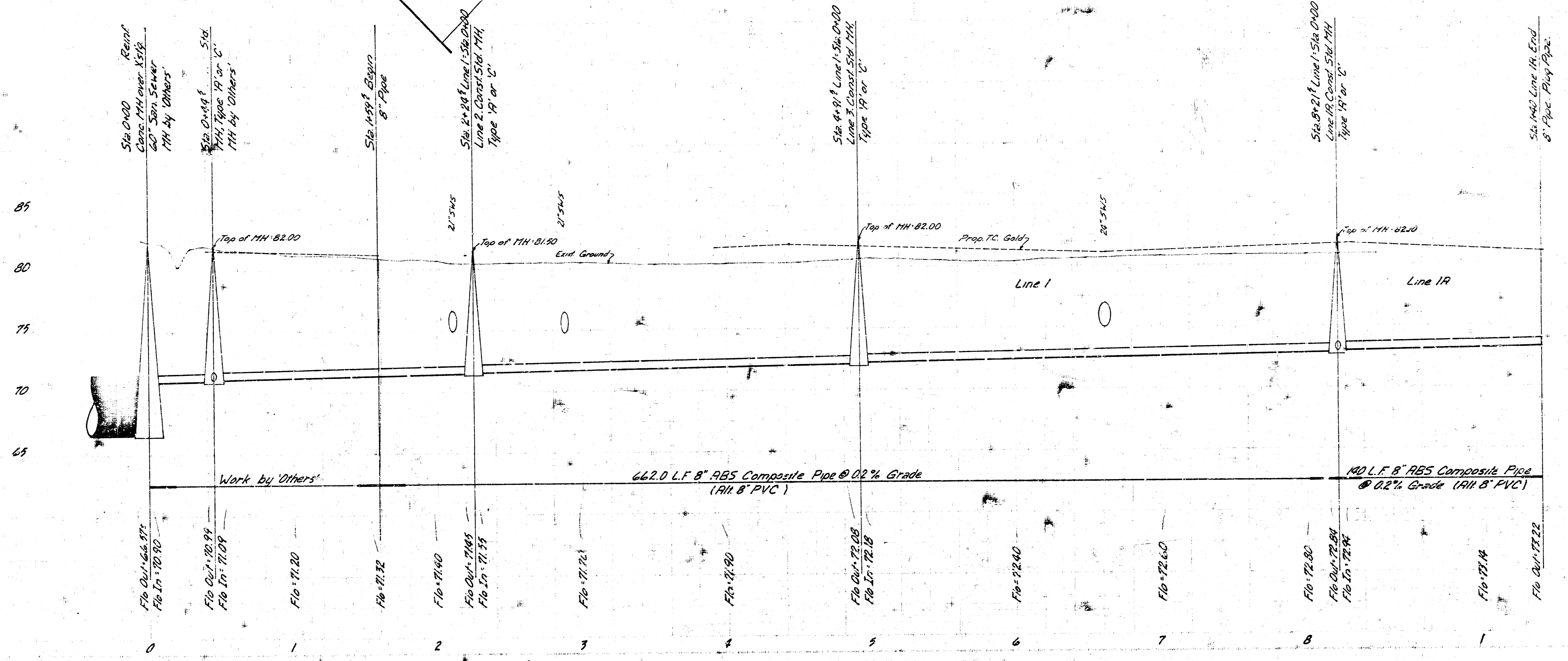


As Built
 4/20/15

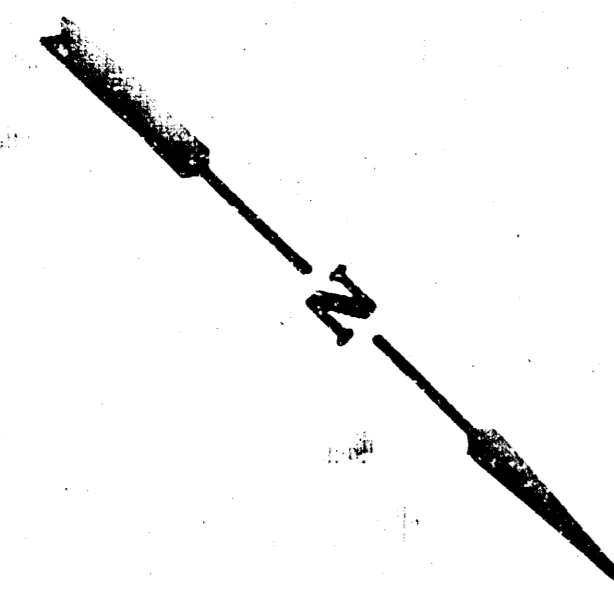
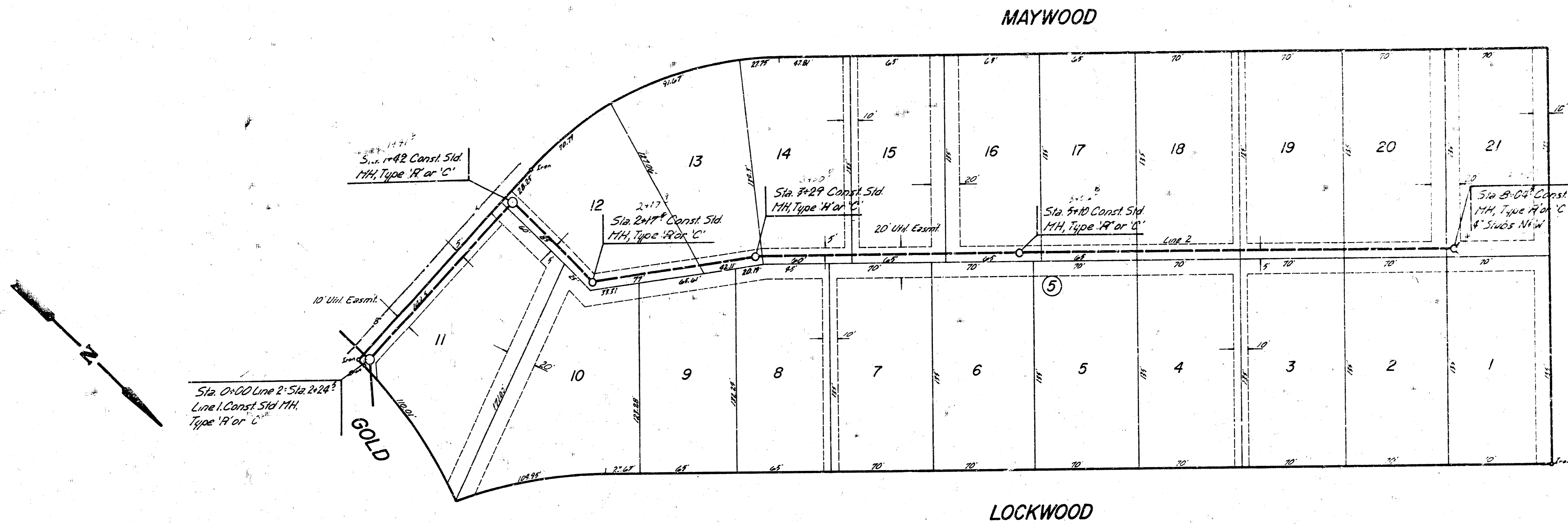


B.M. 82.05 R.R. Spk. NE Face Tele. Pole N.S.
 33'4" S. 51' W. of W.L. Gold
 B.M. 84.03 NW Cor. Conc. Parsh. 139' Mona
 B.M. 81.03 R.R. Spk. S. Side P. Pole NW Cor.
 Lockwood & Southwind.

Scale
 Plan 1"=40'
 Profile Vert. 1"=40'
 Vert. 1"=5'

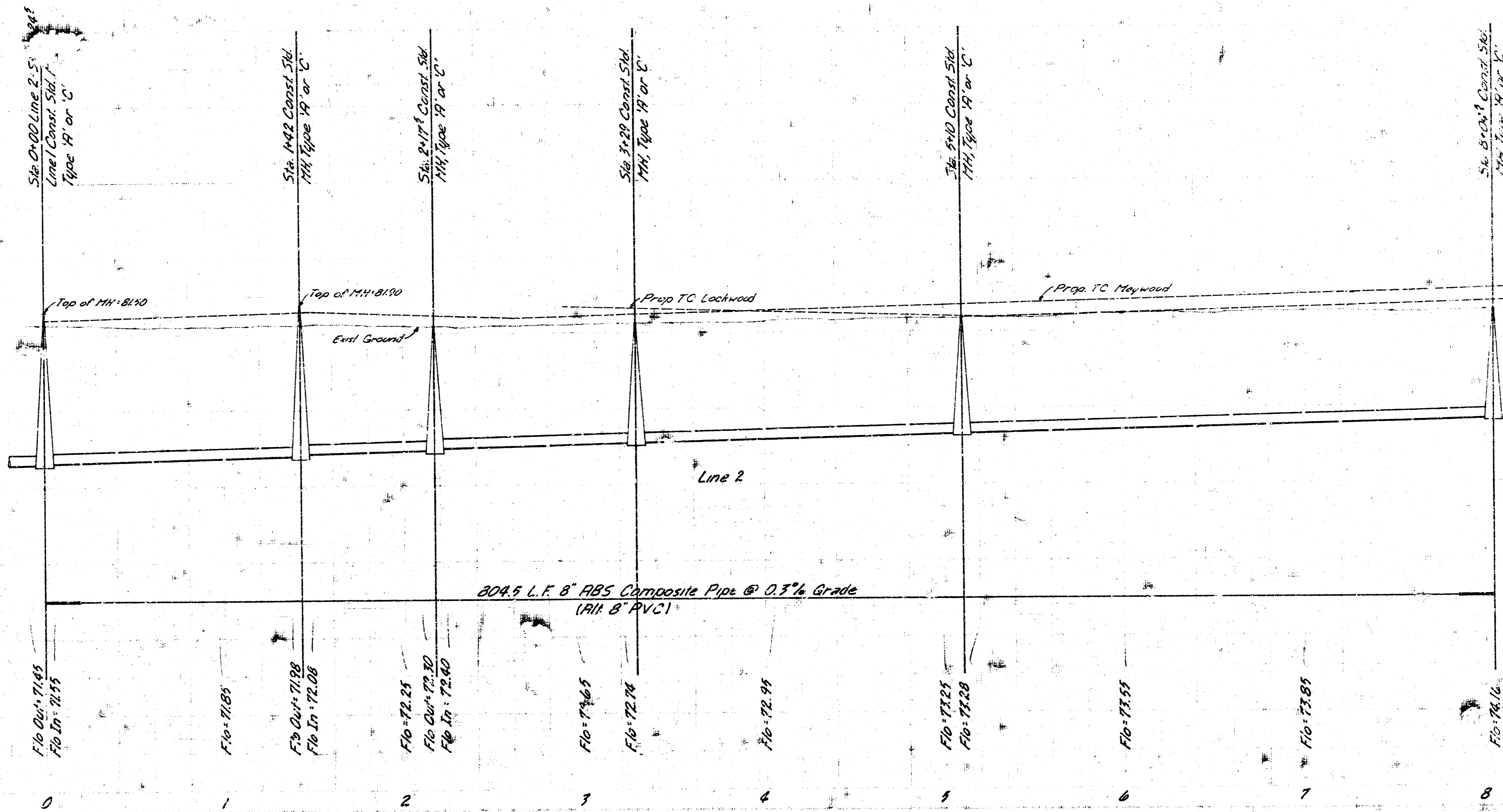


Line 1
 Lat 141.5 W.I.
 2/15

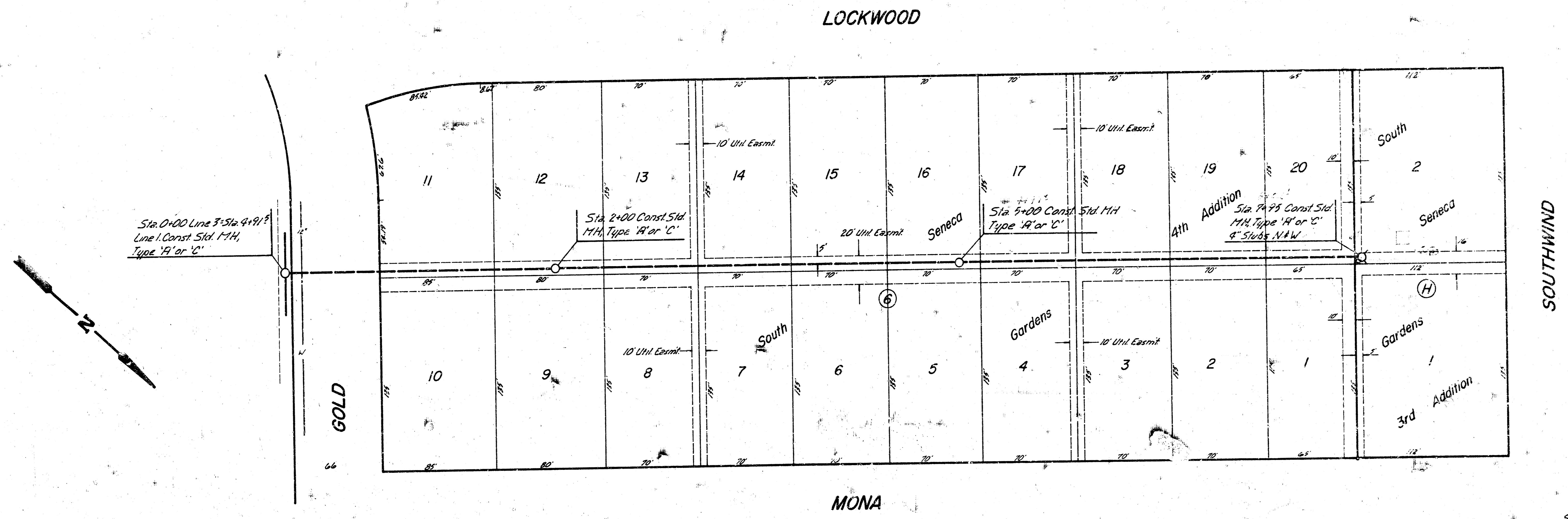


Scale
 Plan 1"=40'
 Profile 1"=40'
 Vert 1"=5'

85
 80
 75
 70

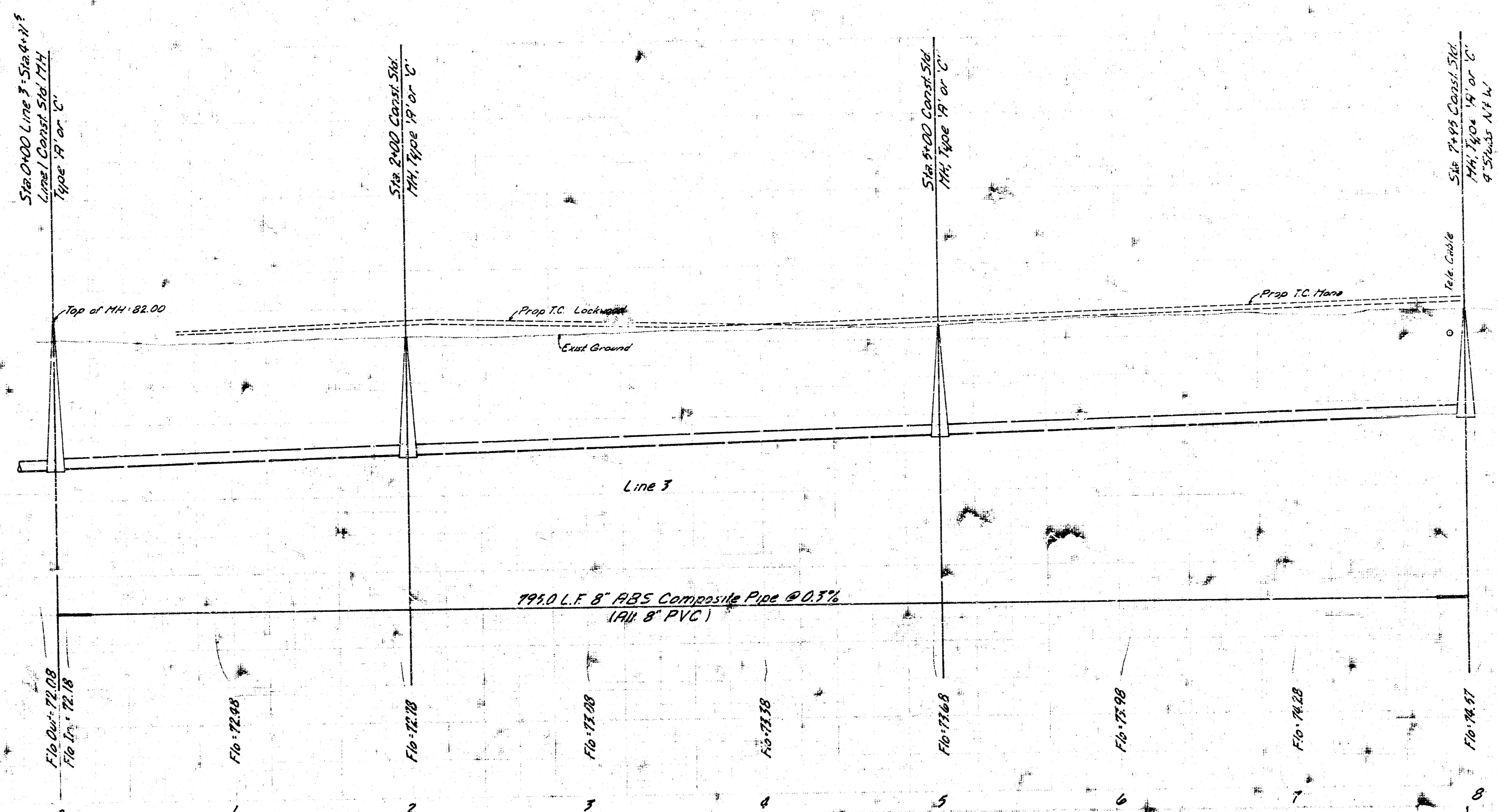


Line 2
 Lot 14, S.W. 1/4



Scale
 Plan 1"=40'
 Profile vert 1"=40'
 Vert 1"=5'

85
 80
 75
 70



Line 3
 Lot 141, S.W.I. 5/5