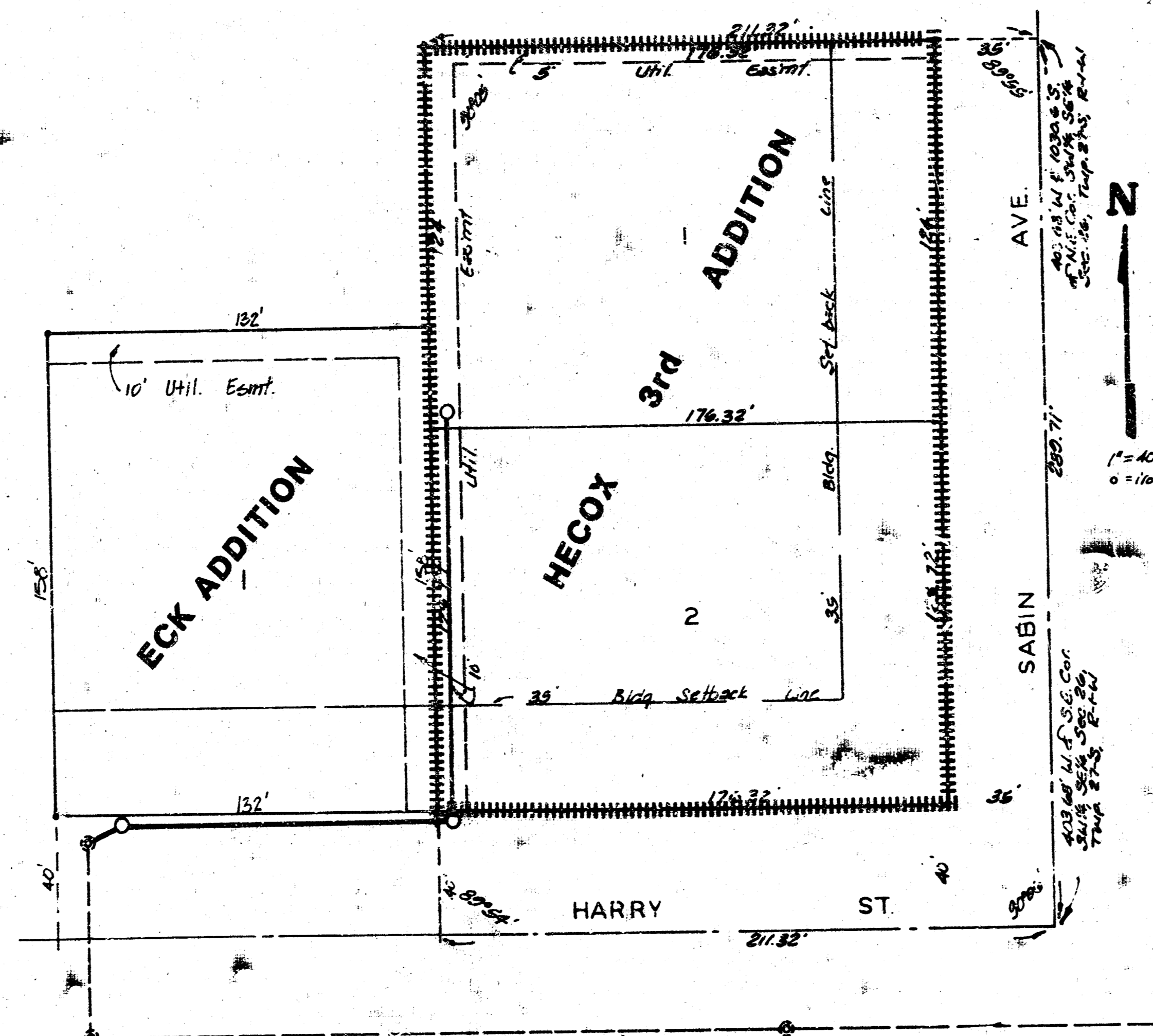


# LATERAL 142 SANITARY SEWER 22

PROJECT NO.

468-76-245-813-15-000-000-001

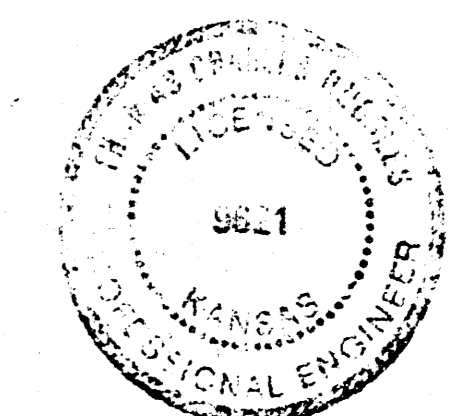


GENERAL NOTES

1. The contractor shall be responsible for preserving property irons. The contractor shall be required to re-establish any property irons which are damaged or destroyed by his construction operations. Such irons shall be re-established by a licensed land surveyor or a licensed professional engineer in accordance with state laws.
2. The contractor shall contact the utility companies prior to any excavation to arrange for field location of underground lines.
3. The contractor shall contact Eck and Eck Machine Co. prior to any work, to coordinate closing of driveway at 4530 W. Harry.

**CITY OF WICHITA, KANSAS**  
**MICHAEL E. LINDEBAK CITY ENGINEER**

BENEFIT DISTRICT |||||



**BAUGHMAN COMPANY, P.A.**  
 SURVEYING & ENGINEERING  
 316/262-7271 • 330 LAURA • WICHITA, KANSAS 67211

FILMED FROM THE BEST AVAILABLE COPY ....

