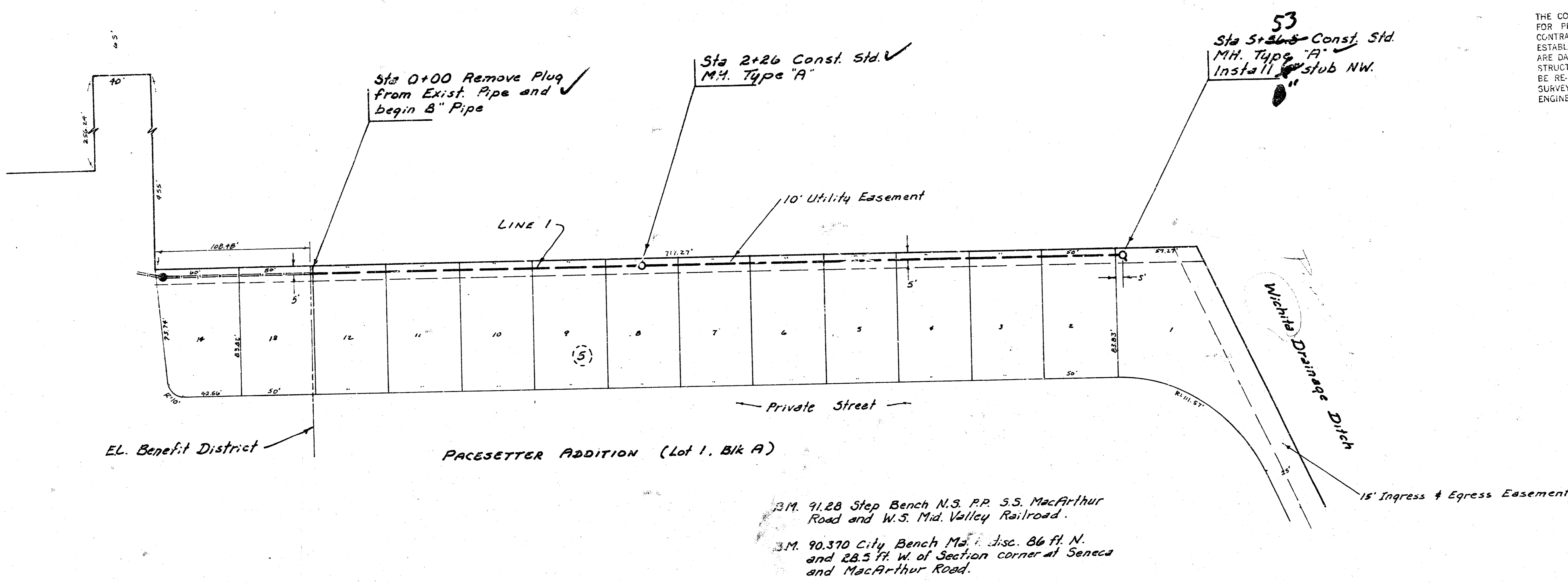


MACARTHUR ROAD



THE CONTRACTOR SHALL BE RESPONSIBLE FOR PRESERVING PROPERTY IRONS. THE CONTRACTOR SHALL BE REQUIRED TO RE-ESTABLISH ANY PROPERTY IRONS WHICH ARE DAMAGED OR DESTROYED BY HIS CONSTRUCTION OPERATIONS. SUCH IRONS SHALL BE RE-ESTABLISHED BY A LICENSED LAND SURVEYOR OR A LICENSED PROFESSIONAL ENGINEER IN ACCORDANCE WITH STATE LAWS.

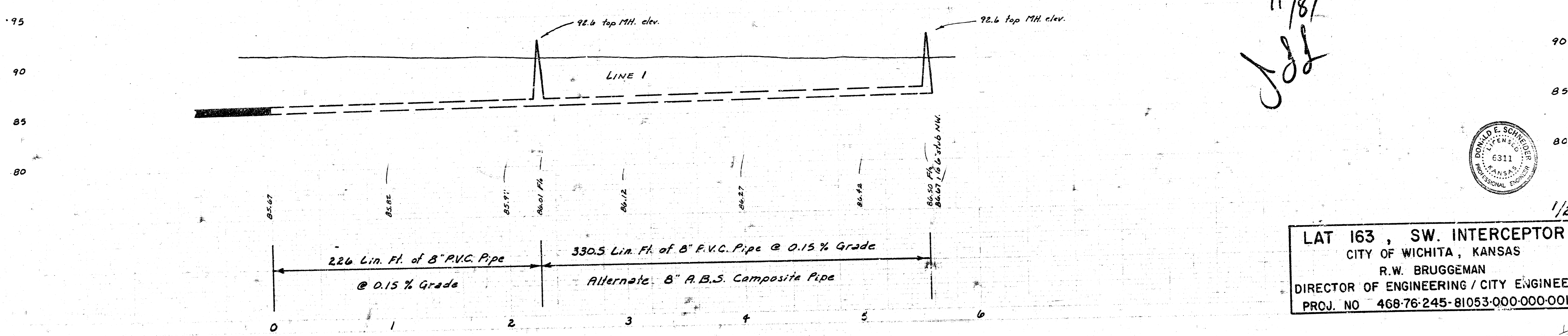
Scale Plan 1" = 40'
Profile 1" = 40' Horiz.
1" = 5' Vert.

B.M. 91.28 Step Bench N.S. P.P. S.S. MacArthur Road and W.S. Mid. Valley Railroad.
B.M. 90.370 City Bench M.D. Disc. 86 ft. N. and 28.5 ft. W. of Section corner at Seneca and MacArthur Road.

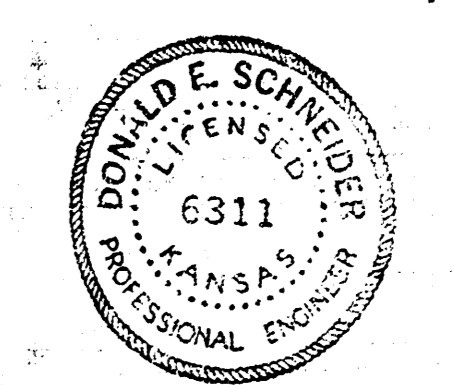
Sta 0+00 Remove Plug and begin 8" Pipe.

Sta 2+26 Const. Std. M.H. Type "A"

Sta 5+56.5 Const. Std. M.H. Type "A" Install 6" stub NW.

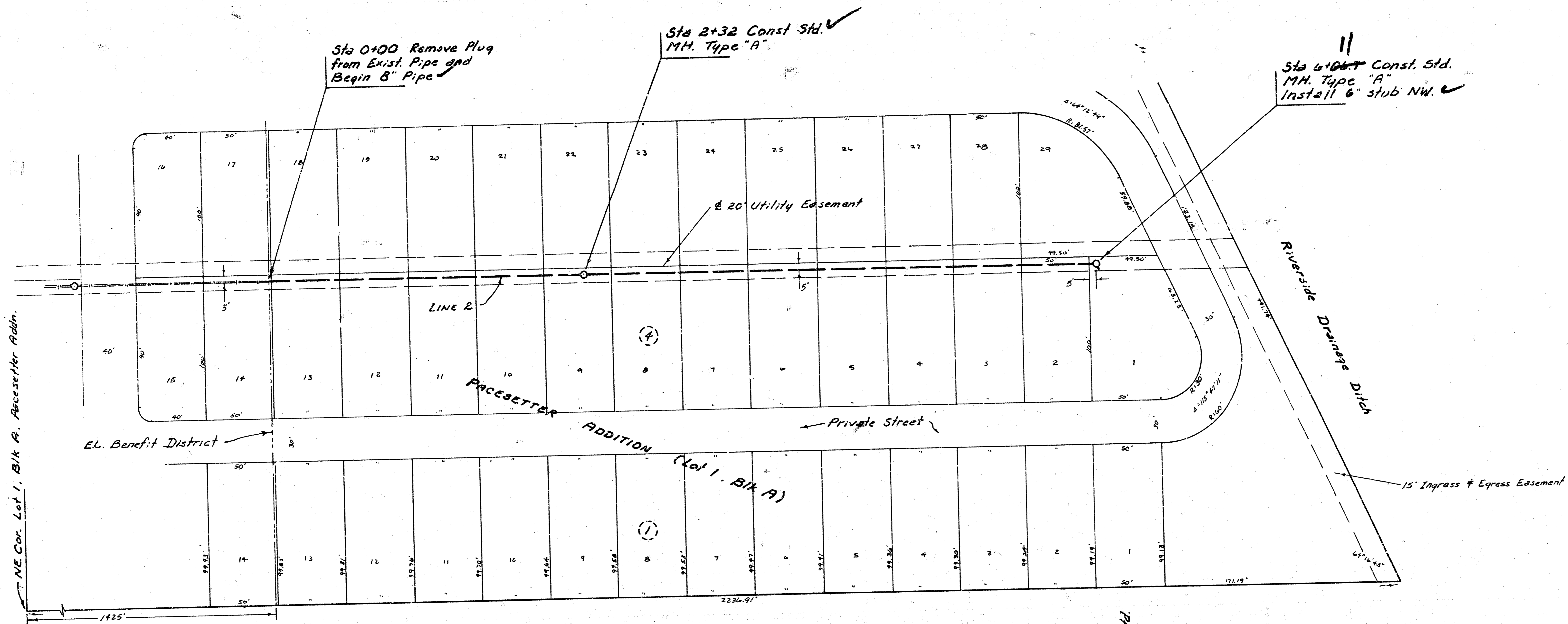


As Built
11/8/11
JSS



LAT 163, SW. INTERCEPTOR
CITY OF WICHITA, KANSAS
R.W. BRUGGEMAN
DIRECTOR OF ENGINEERING / CITY ENGINEER
PROJ. NO 468-76-245-81053-000-000-001

1/2



Sta 0+00 Remove Plug from Exist. Pipe and Begin 8" Pipe

Sta 2+32 Const. Std. M.H. Type "A"

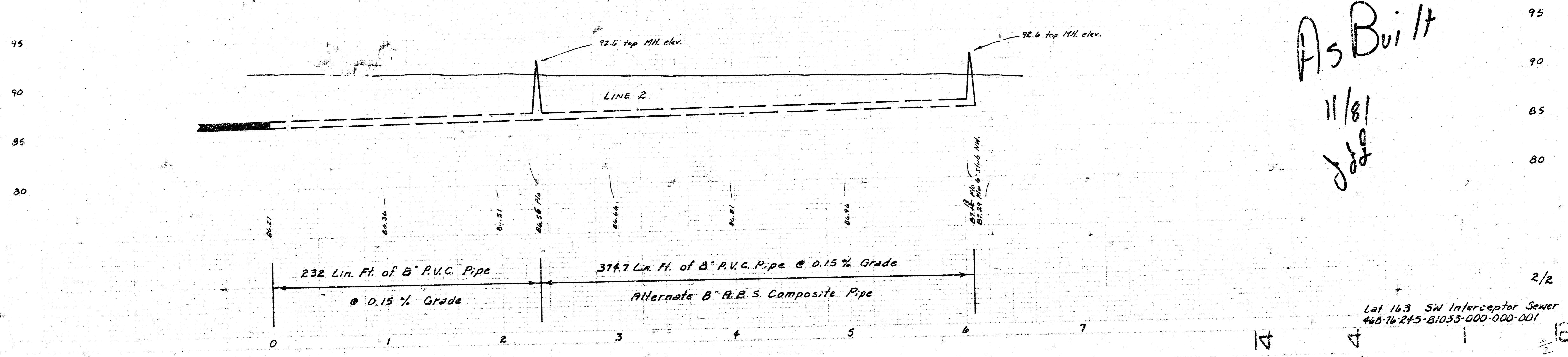
Sta 6+06.7 Const. Std. M.H. Type "A" Install 6" stub NW

Sta 0+00 Remove Plug and begin 8" Pipe

Sta 2+32 Const. Std. M.H. Type "A"

Sta 6+06.7 Const. Std. M.H. Type "A" Install 6" stub NW

Scale Plan 1" = 40'
Profile 1" = 40' Horiz.
1" = 5' Vert.



As Built
11/81
JDF