

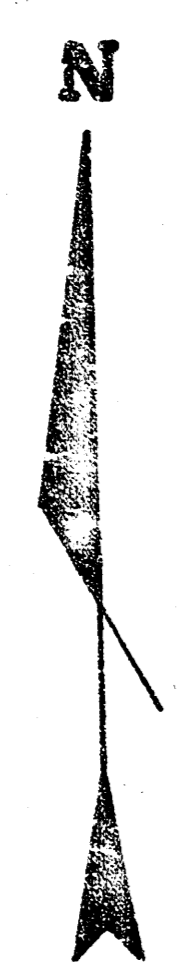
M. Green
J. Lindsey

ME 8

M. Green
J. Lindsey

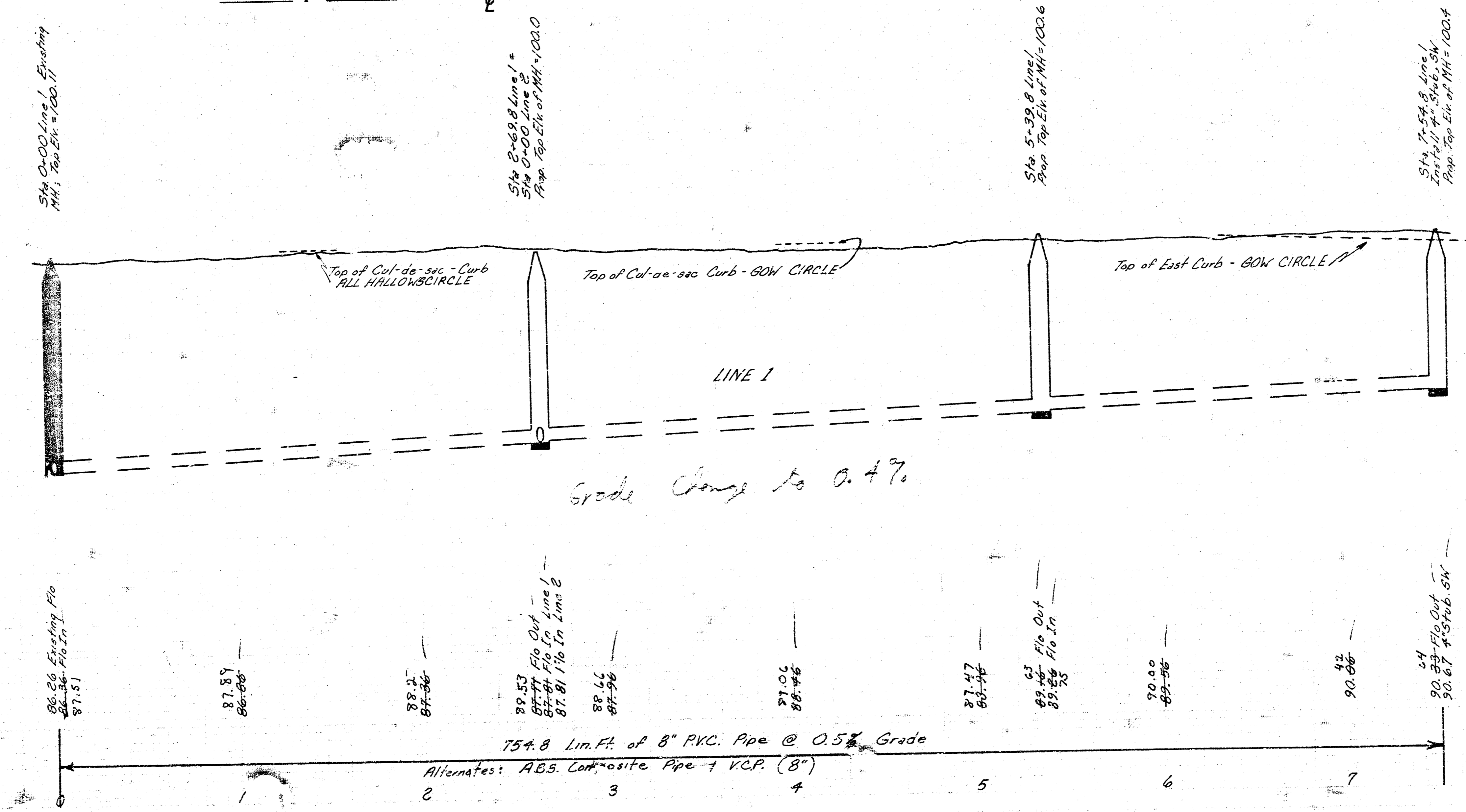
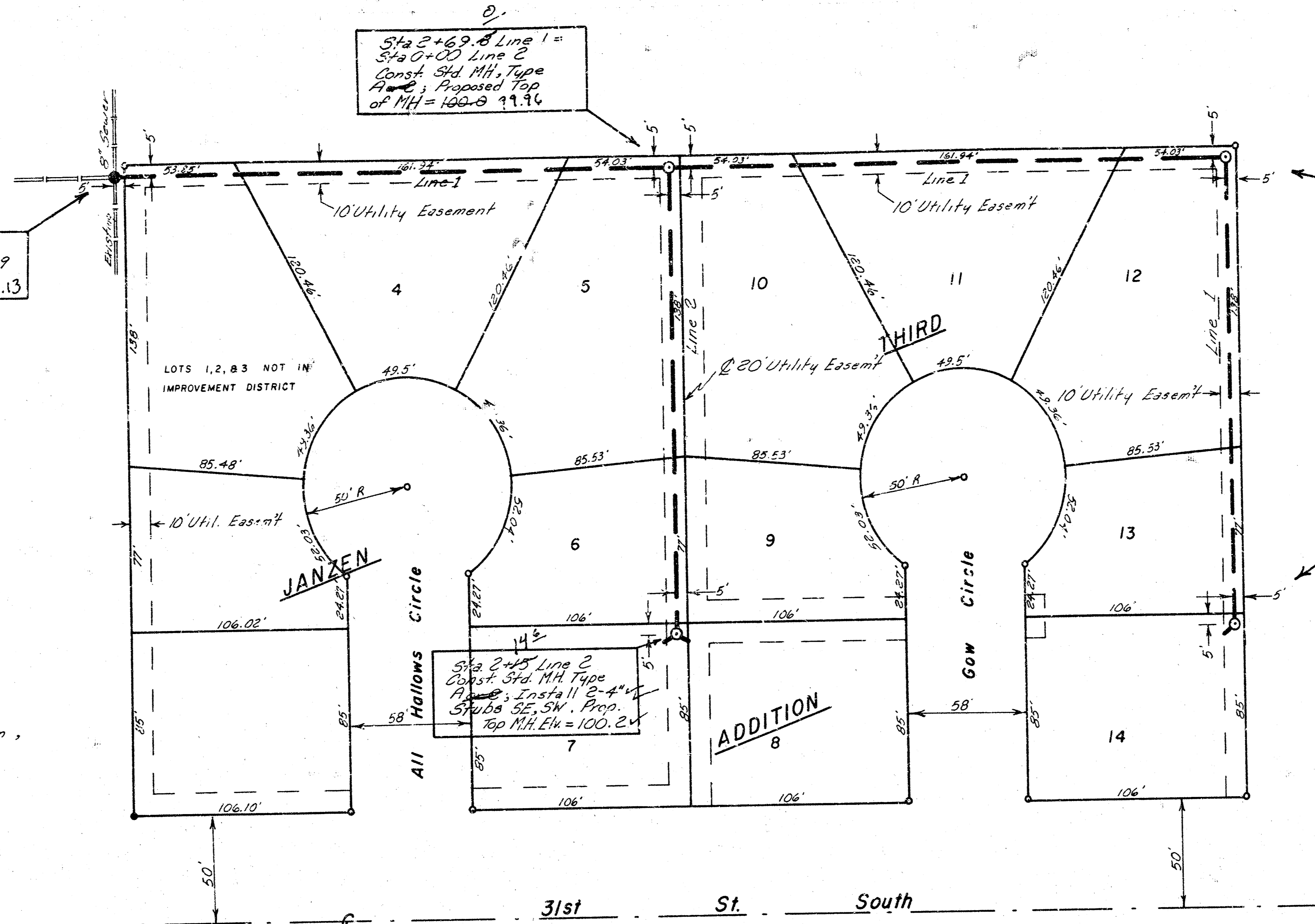
M. Green
J. Lindsey

ME 8



SCALE: 1" = 40' Plan
Horiz. 1" = 40'
Vert. 1" = 5' Profile

Bench Marks: 103.52 City Std. Disc. - Top East end of the South handrail to R.C.B. at Sheridan and 31st St. South.
100.23 T.B.M. - MH Rim - 5' S. and 6' W. of A Iron, SW Cor. Lot 1, Jansen 3rd Addn.



40-1
Sta. 5+32.7 Line 1
Const. Std. MH, Type
R-2, Proposed Top
Elev. of MH = 100.852

53.7
Sta. 7+54.8 Line 1
Const. Std. MH, Type
R-2, Install 4" Stub,
SW, Proposed Top of
MH Elev. = 100.42

Sta. 2+69.8 Line 1 =
Sta. 0+00 Line 2
Const. Std. MH, Type
R-2, Proposed Top
of MH = 100.9113

Sta. 2+45 Line 2
Const. Std. MH, Type
R-2, Install 4" Stub,
SW, Proposed Top of
MH Elev. = 100.2

Sta. 0+00 Line 2
Prop. Top Elev. of MH = 100.0

Sta. 5+32.8 Line 2
Prop. Top Elev. of MH = 100.6

Sta. 7+54.8 Line 1
Const. Std. MH, Type
R-2, Install 4" Stub, SW
Prop. Top Elev. of MH = 100.4

Sta. 8+15 Line 2
Const. Std. MH, Type
R-2, Install 4" Stub, SW
Prop. Top Elev. of MH = 100.2

As Built
J.L.L.
5/82

LAT. 169, SOUTHWEST INTERCEPTOR
CITY OF WICHITA, KANSAS
R.W. BRUGGEMAN
DIRECTOR OF ENGINEERING/CITY ENGINEER
PROJ. NO. 468-76-245-81090-000-001

Top MH
1-5-82
1.0'

