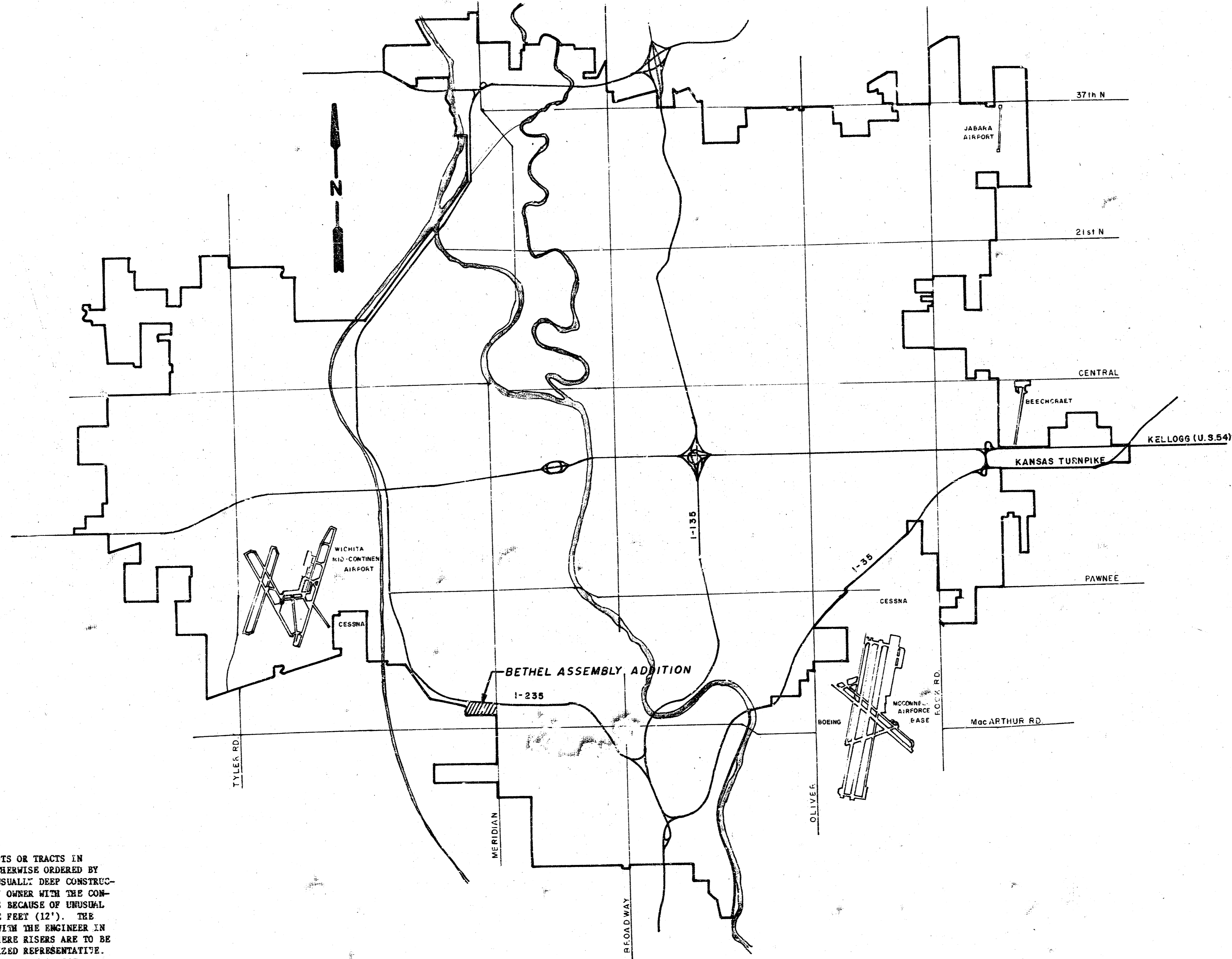


CITY OF WICHITA  
 DEPARTMENT OF PUBLIC WORKS  
**LATERAL 173**  
**S.W. INTERCEPTOR SEWER**

PROJECT NO. 468-75-245-81162-000-000-001  
 BETHEL ASSEMBLY ADDITION

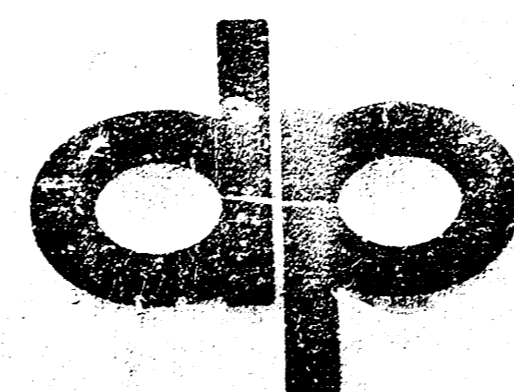


1. Title Sheet
2. Benefit District & Plat Map
3. Plan Sheet Sta. 0+00 to Sta. 12+00
4. Plan Sheet Sta. 12+00 to Sta. 16+00
5. Details

NOTE: RISER PIPE SHALL BE INSTALLED TO SERVE INDIVIDUAL LOTS OR TRACTS IN CONJUNCTION WITH NEW SANITARY SEWER CONSTRUCTION, UNLESS OTHERWISE ORDERED BY THE ENGINEER, BECAUSE OF GROUND WATER, UNSTABLE SOIL OR UNUSUAL DEEP CONSTRUCTION. RISER LOCATIONS SHALL BE AS APPROVED BY THE PROPERTY OWNER WITH THE CONCURRENCE OF THE ENGINEER. INSTALLATION OF RISERS ON SEWERS BECAUSE OF UNUSUAL DEPTH WILL BE REQUIRED WHEN THE SEWER IS DEEPER THAN TWELVE FEET (12'). THE CONTRACTOR WILL BE REQUIRED TO FILE WRITTEN DOCUMENTATION WITH THE ENGINEER IN A FORM APPROVED BY THE ENGINEER INDICATING THE LOCATIONS WHERE RISERS ARE TO BE INSTALLED AS REQUESTED BY THE PROPERTY OWNER OR HIS AUTHORIZED REPRESENTATIVE. RISER PIPE CONSTRUCTION SHALL CONFORM TO THE REQUIREMENTS AS SHOWN ON THE STANDARD RISER DETAIL SHEET.

*As Built  
 J.L.L.  
 5-82*

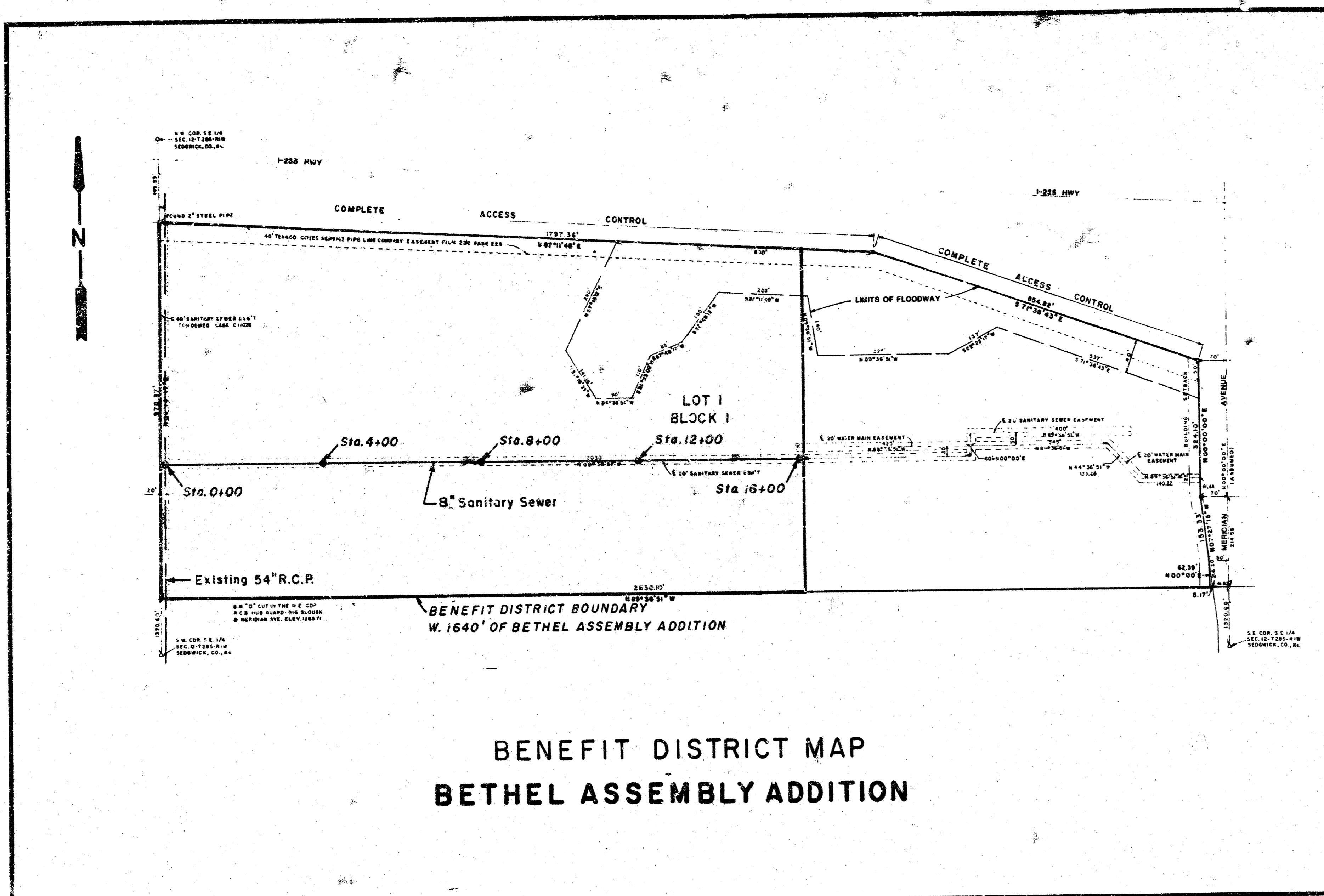
Plans Prepared By



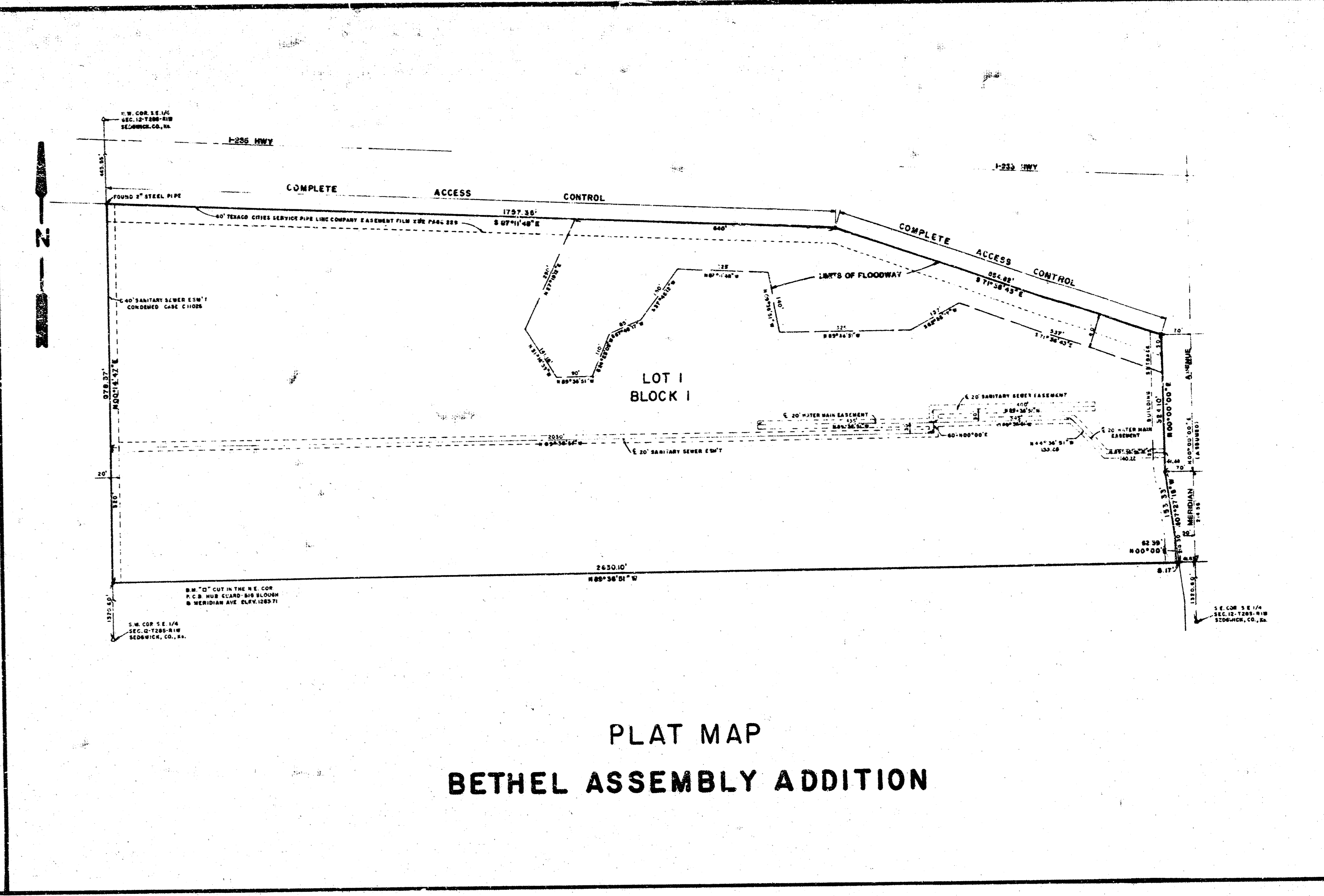
**POE & ASSOCIATES OF KANSAS, INC.**  
 CONSULTING ENGINEERS

November, 1981





**BENEFIT DISTRICT MAP  
BETHEL ASSEMBLY ADDITION**



**PLAT MAP  
BETHEL ASSEMBLY ADDITION**

**GENERAL NOTES:**

1. This project will be bid and constructed in accordance with applicable City of Wichita specifications and / or latest supplementals thereto, by reference made a part of these plans.
2. Preservation of property irons. The contractor shall be responsible for preserving property irons. The contractor shall be required to re-establish any property irons which are damaged or destroyed by his construction operations. Such irons shall be re-established by a licensed land surveyor or a licensed professional engineer in accordance with applicable state laws.
3. Prior to beginning construction, the contractor shall verify the horizontal and vertical location of the existing 54" Sanitary Sewer at the beginning of line. If any discrepancies are found regarding field locations and plan locations in this area, the contractor shall contact the engineer for the necessary field adjustment calculations prior to proceeding.
4. At least 48 hours prior to beginning excavation (excluding weekends and holidays), the contractor shall contact the utility location service "KAW-U-DIG-IT" at 316-267-2889 to request the following companies to locate any existing line within the project area: Gas Service Co., K.G. & E., Southwestern Bell Telephone Co., Wichita Water Dept., and the Cities Service Gas Co.
5. Excess excavated material and other debris shall be wasted as directed by the Engineer.
6. Site grading in this area maybe completed before the construction of the sewer extension. Changes in trench depth because of the grading will not affect the price bid for the sewer construction.
7. The contractor shall inspect the site and satisfy himself as to existing conditions and circumstances prior to submitting his bid.
8. The ground water surface may affect the construction of the sewer extension in this area. The water surface of the pond on this property was at elevation of 1273.5 on Nov. 10, 1951.
9. B.M. "C" cut in the N.E. Cor. R.C.B.C. Hub Guard-Big Sluough and Meridian Elev. 1283.71 m.s.l.. Conversion from m.s.l. datum to City Datum- 1187.4

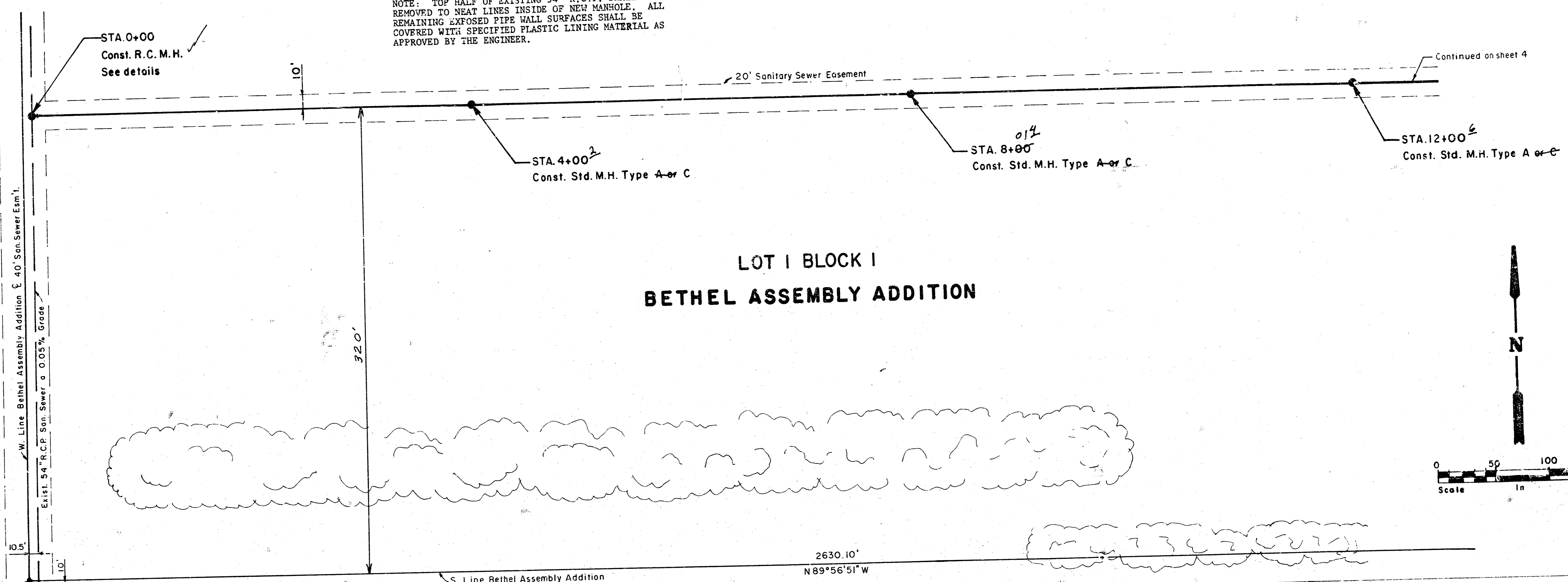
Proj. No. 448-76-245-81162-000-000-001

<b>dp</b>	CITY OF WICHITA	
	Bethel Assembly Addition	
LATERAL #73		
S. W. INTERCEPTOR SEWER		
ENGINEER: K.H.	ENGR. TECH: J.W.	
DRAWN BY: J.W.	SCALE: NONE	
DATE: NOV. 1981	SHEET 2 OF 5	

POE & ASSOCIATES  
CONSULTING ENGINEERS

STATE	FISCAL YEAR	SHEET NO.	TOTAL SHEETS

NOTE: TOP HALF OF EXISTING 54" R.C.P. SHALL BE REMOVED TO NEAT LINES INSIDE OF NEW MANHOLE. ALL REMAINING EXPOSED PIPE WALL SURFACES SHALL BE COVERED WITH SPECIFIED PLASTIC LINING MATERIAL AS APPROVED BY THE ENGINEER.



LOT 1 BLOCK 1  
BETHEL ASSEMBLY ADDITION

DATE	BY
DATE	BY

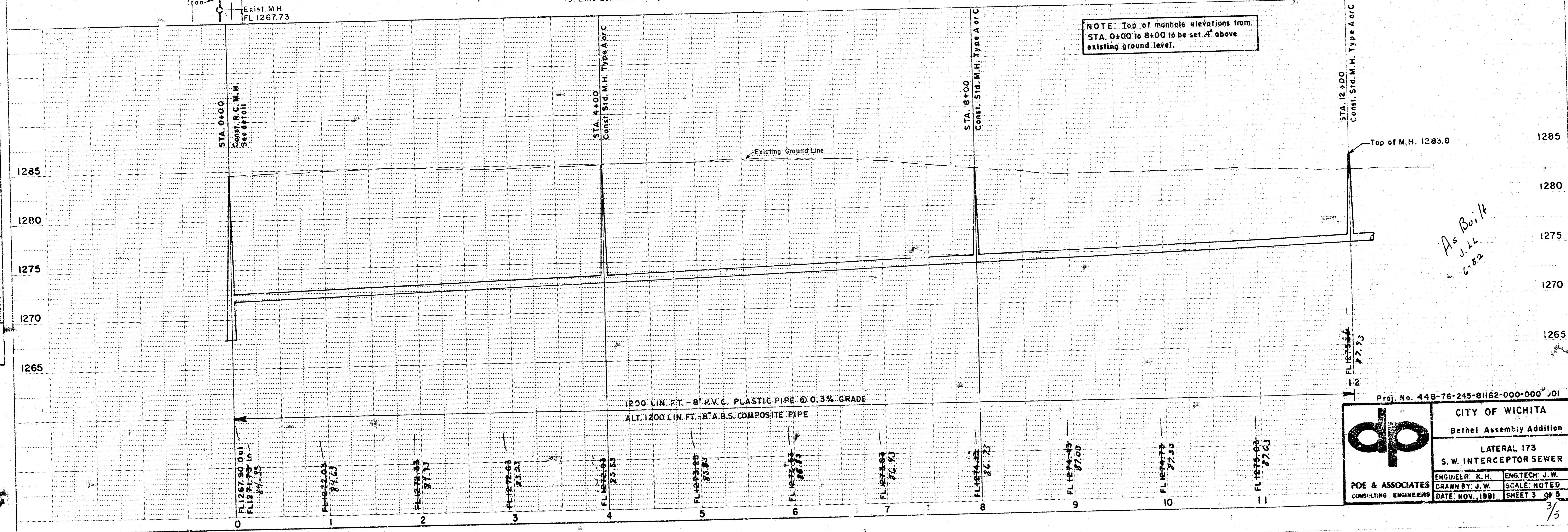
PLAN

NO. 1267.73

NO. 1267.73

NO. 1267.73

NO. 1267.73



NOTE: Top of manhole elevations from STA. 0+00 to 8+00 to be set 4' above existing ground level.

As Built  
J.L.  
6-82

Proj. No. 448-76-245-81162-000-000 201

**dp**

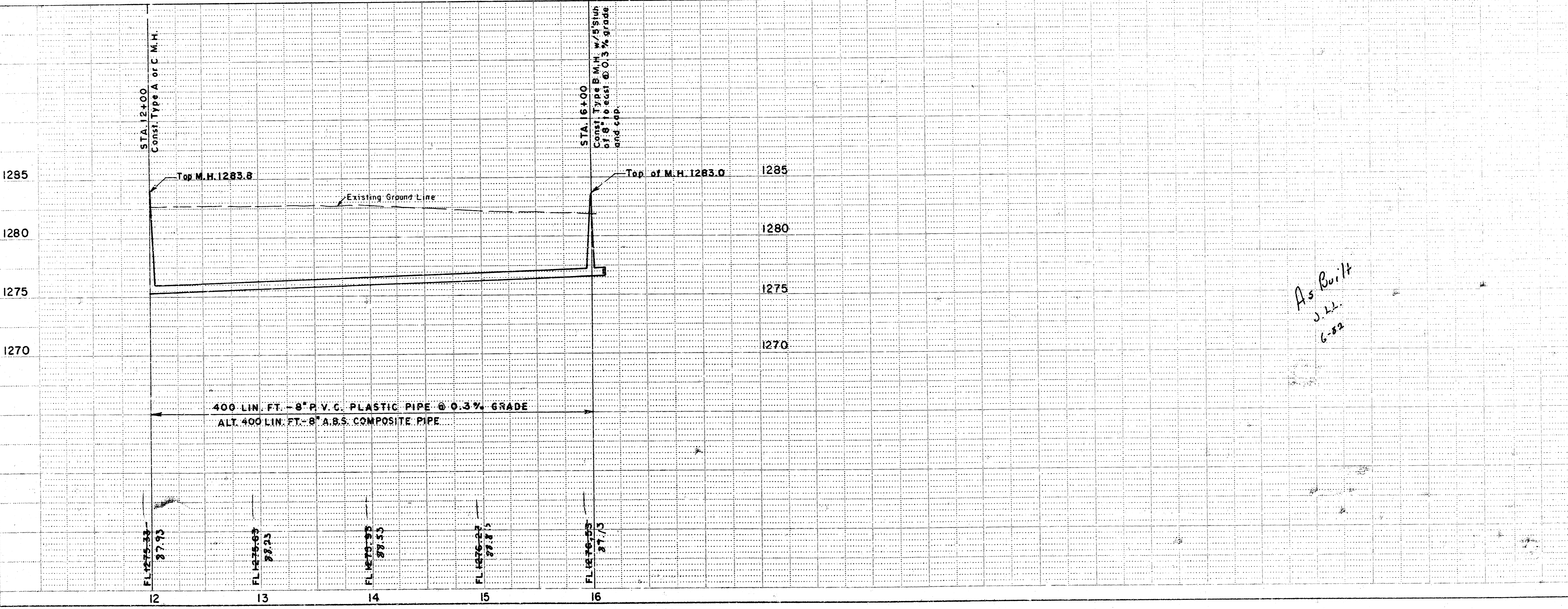
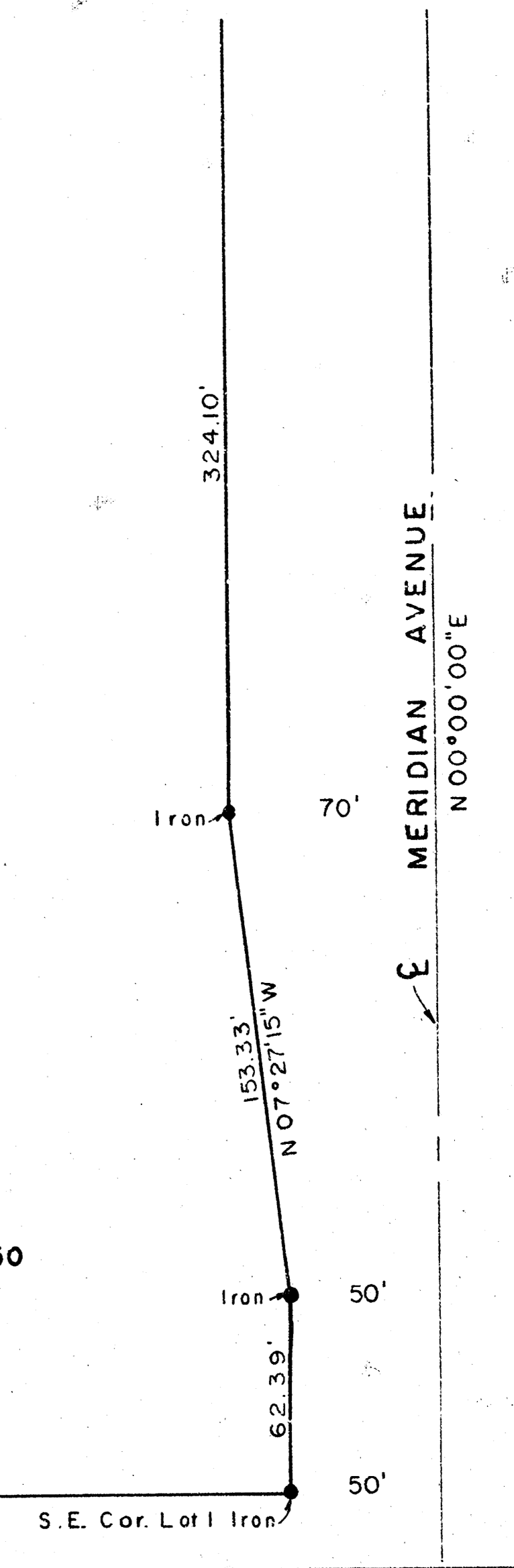
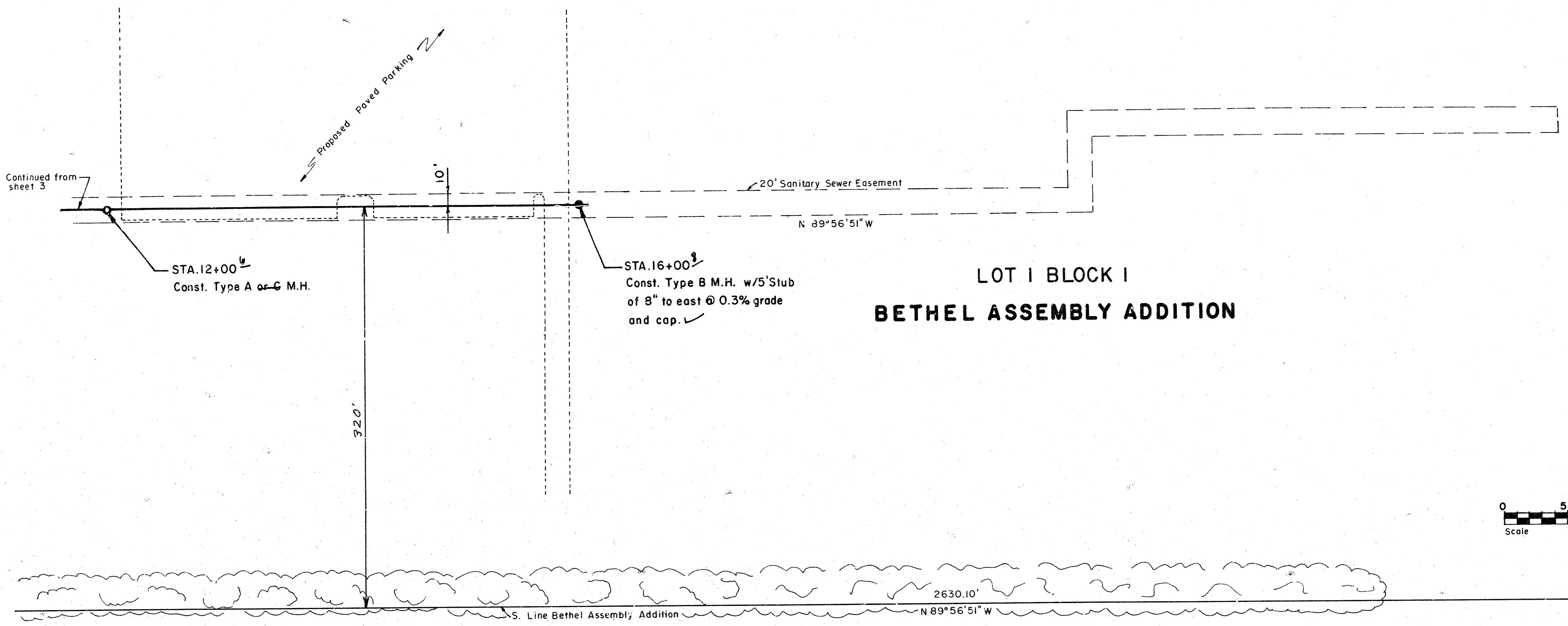
CITY OF WICHITA  
Bethel Assembly Addition  
LATERAL 173  
S.W. INTERCEPTOR SEWER

ENGINEER: K.H.    ENGTCH: J.W.  
DRAWN BY: J.W.    SCALE: NOTED  
DATE: NOV. 1981    SHEET 3 OF 5

STATE	COUNTY	SHEET NO.	TOTAL SHEETS

DATE	BY
SURVEYED	
ALIGNED	
CHECKED	
NOTE BOOK	
NO.	

DATE	BY
SURVEYED	
ALIGNED	
CHECKED	
NOTE BOOK	
NO.	



*As Built*  
J.H.  
6-82

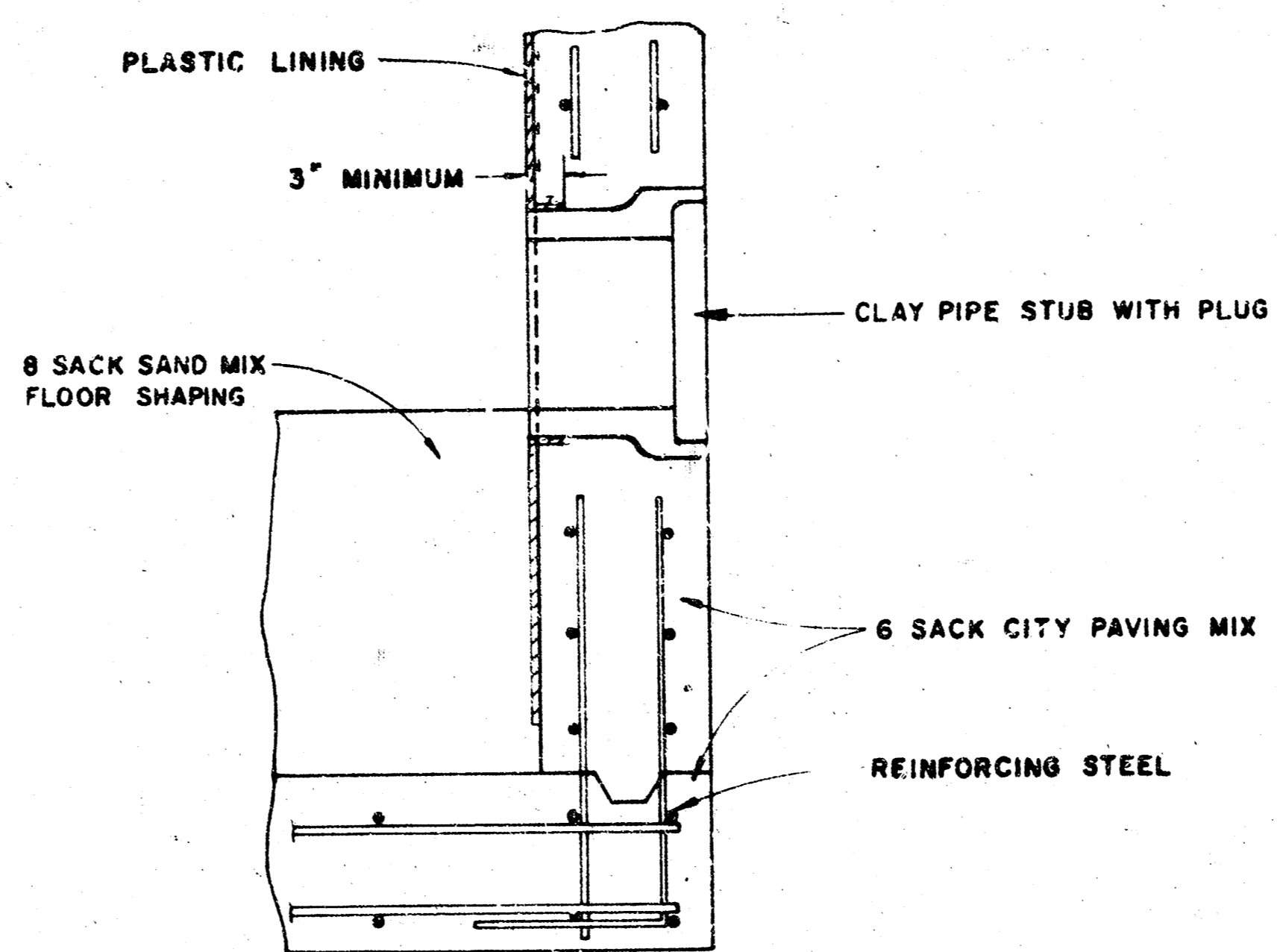
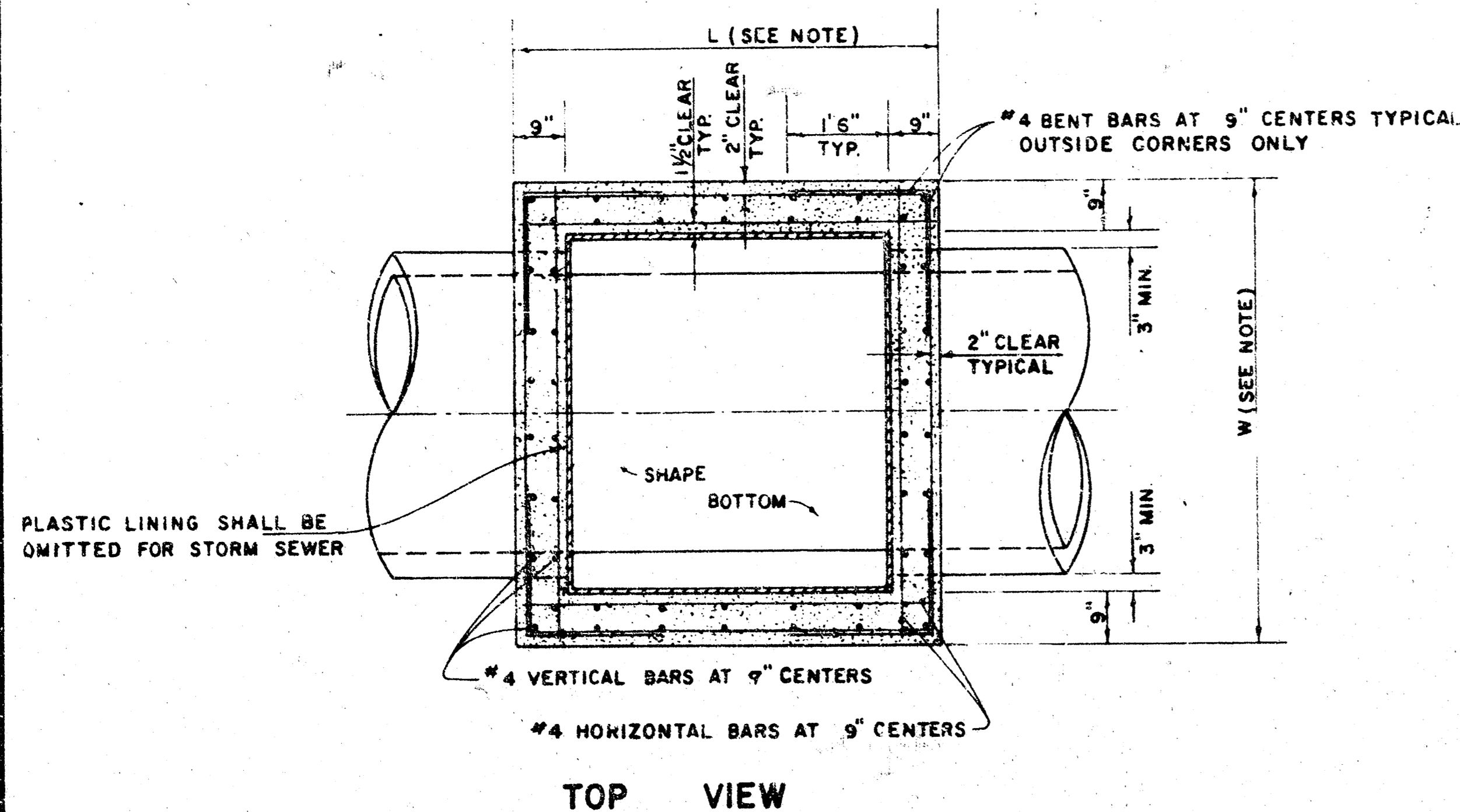
Proj. No. 448-76-245-81162-000-000-001

**dp**

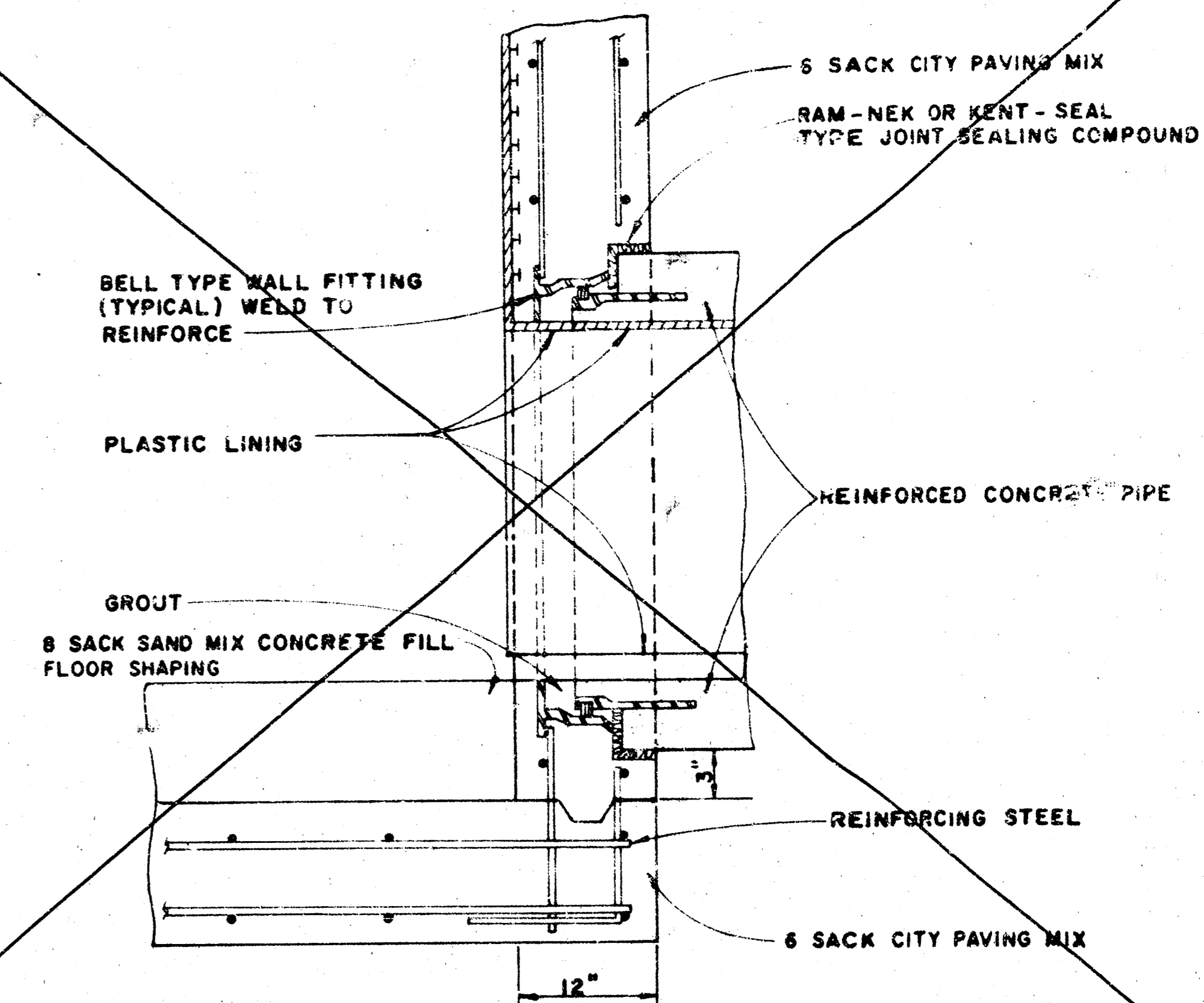
CITY OF WICHITA  
Bethel Assembly Addition  
LATERAL 173  
S. W. INTERCEPTOR SEWER

ENGINEER: K.H.    ENG. TECH: J.W.  
DRAWN BY: J.W.    SCALE: NOTED  
DATE: NOV. 1981    SHEET 4 OF 5

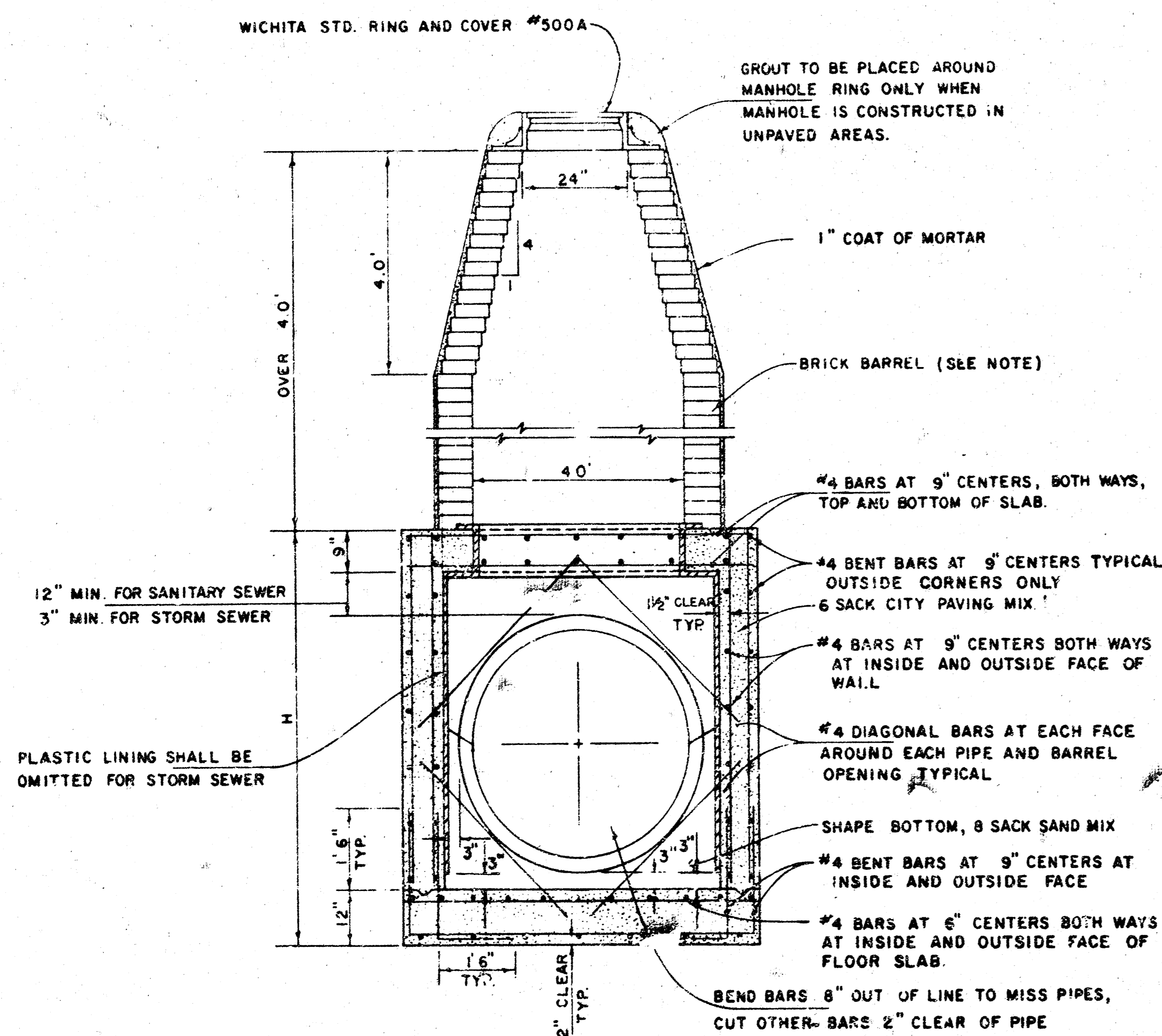
POE & ASSOCIATES  
CONSULTING ENGINEERS



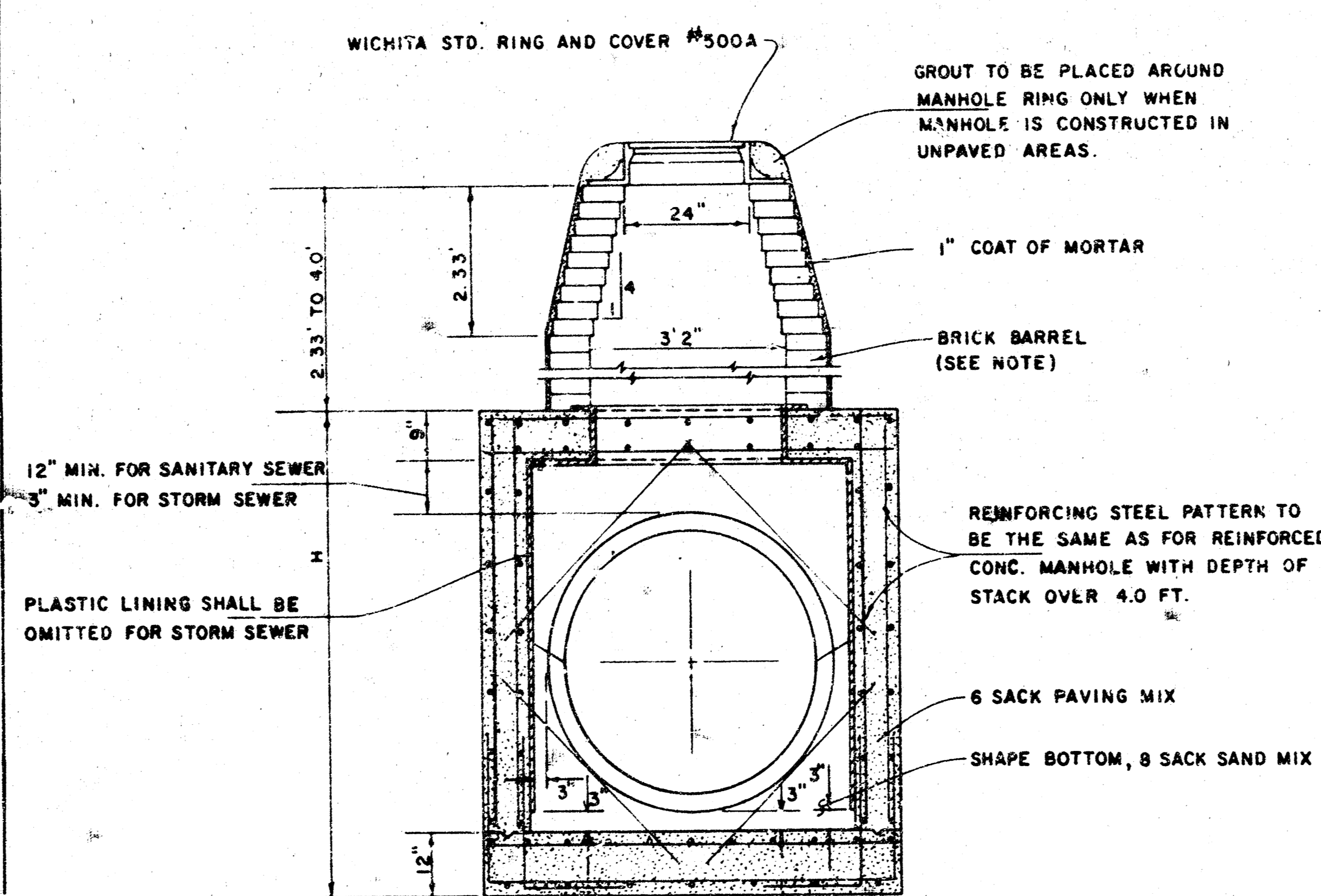
V.C.P. CONNECTION DETAIL  
SANITARY SEWER ONLY



R.C.P. CONNECTION DETAIL  
SANITARY SEWER ONLY

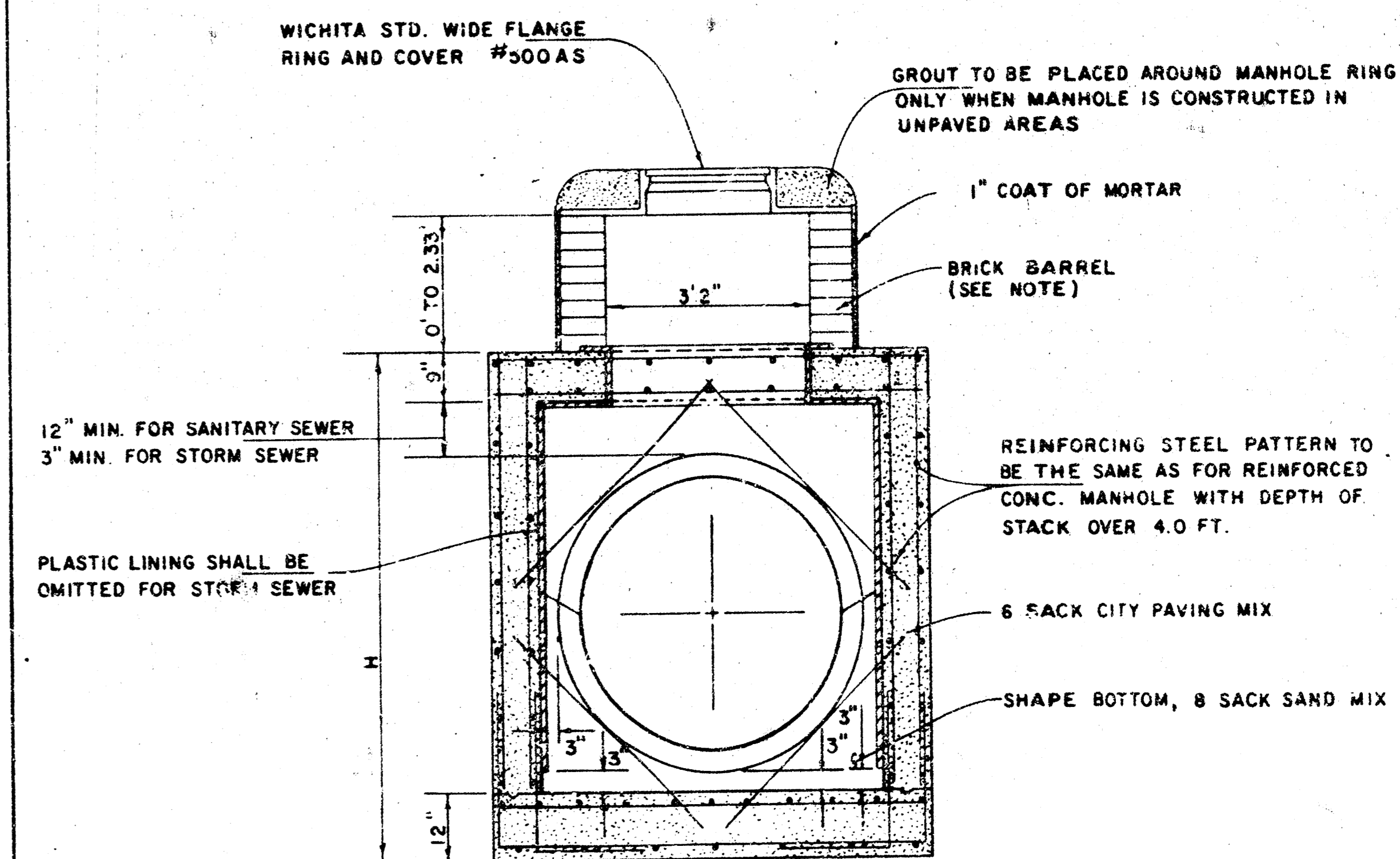


REINFORCED CONCRETE MANHOLE  
DEPTH OF STACK: OVER 4.0'  
SCALE 1" = 2'



REINFORCED CONCRETE MANHOLE  
DEPTH OF STACK: 2.33' TO 4.0'  
SCALE 1" = 2'

NOTE:  
BRICK BARRELS LESS THEN 16' DEEP SHALL HAVE 8" WALLS EXCEPT WHEN LOCATED WITHIN PUBLIC STREET OR ALLEY PAVEMENT THEN THE WALL SHALL BE 12" BRICK BARRELS MORE THEN 16' DEEP SHALL HAVE 12" WALLS. THE "L" AND "W" DIMENSIONS SHALL BE A MINIMUM OF 5'6" FOR BRICK BARRELS WITH 8" WALLS AND 6'2" FOR BRICK BARRELS WITH 12" WALLS.



REINFORCED CONCRETE MANHOLE  
DEPTH OF STACK: 0' TO 2.33'  
SCALE 1" = 2'

Proj. No. 448-76-245-81162-000-001

STANDARD DETAILS  
REINFORCED CONCRETE MANHOLES  
CITY OF WICHITA