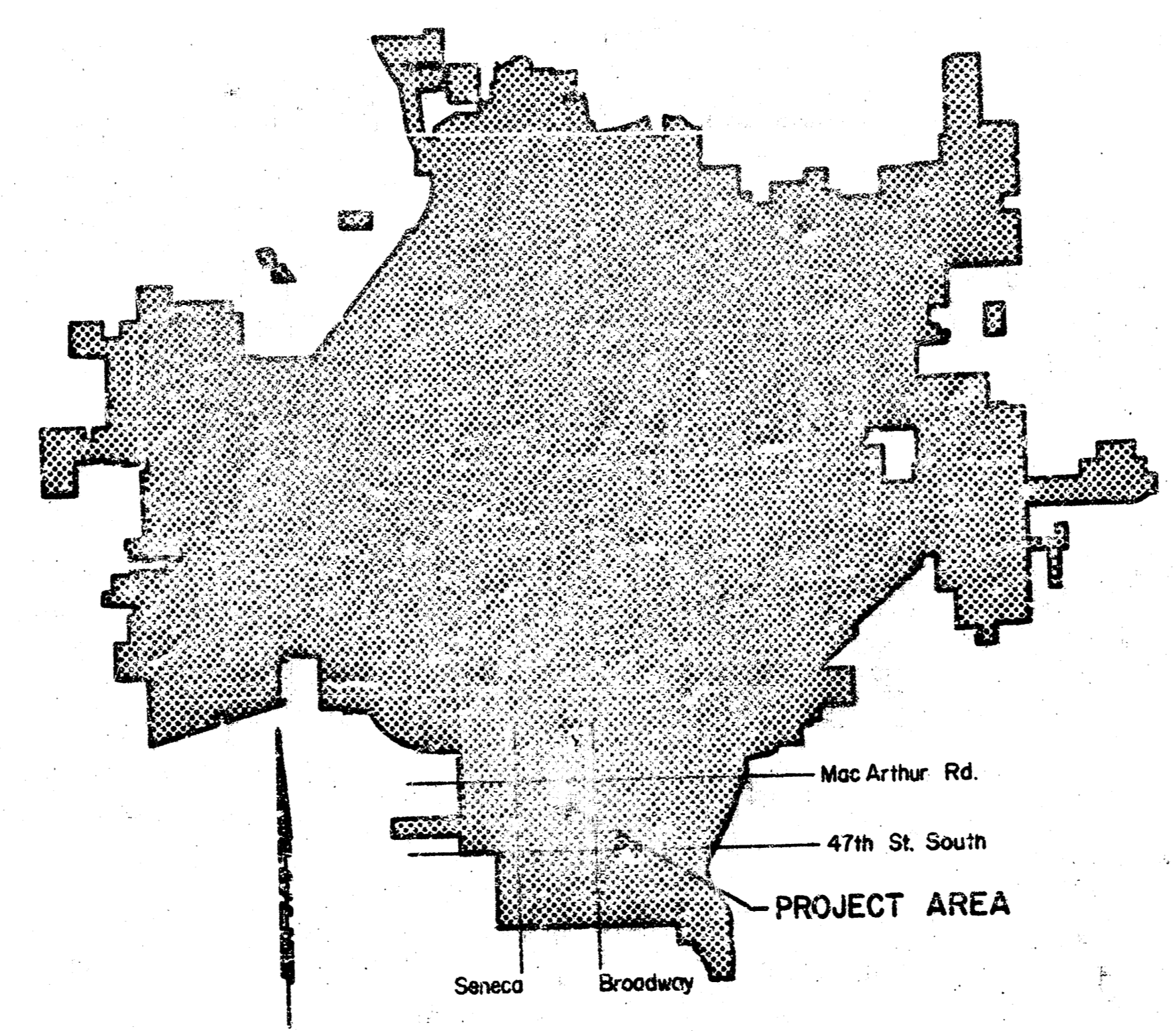


CONSTRUCTION PLANS FOR
LATERAL 177
OF THE
SOUTHWEST INTERCEPTOR SEWER
THE CITY OF WICHITA,
SEDGWICK COUNTY, KANSAS

INDEX OF SHEETS

SHEET NO. 1	TITLE SHEET
SHEET NO. 2	KEY MAP & GENERAL NOTES
SHEET NO. 3	PLAN & PROFILE

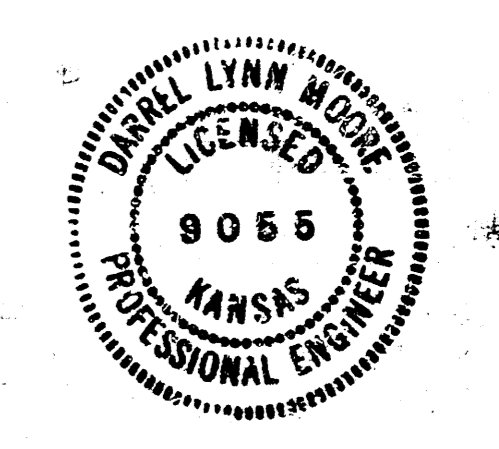


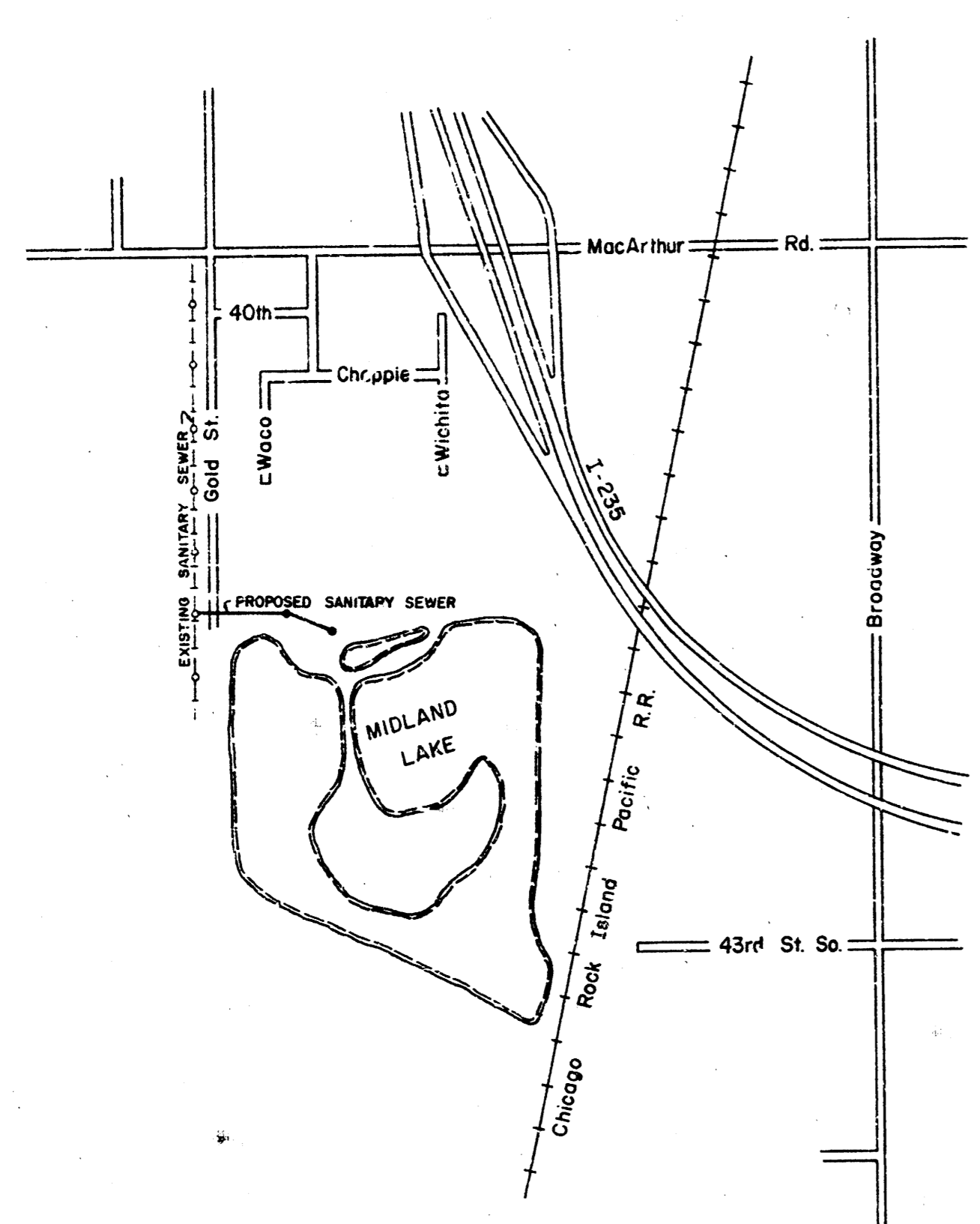
LOCATION MAP

CITY OF WICHITA PROJECT NO. 468-76-245-81214-000-000-001

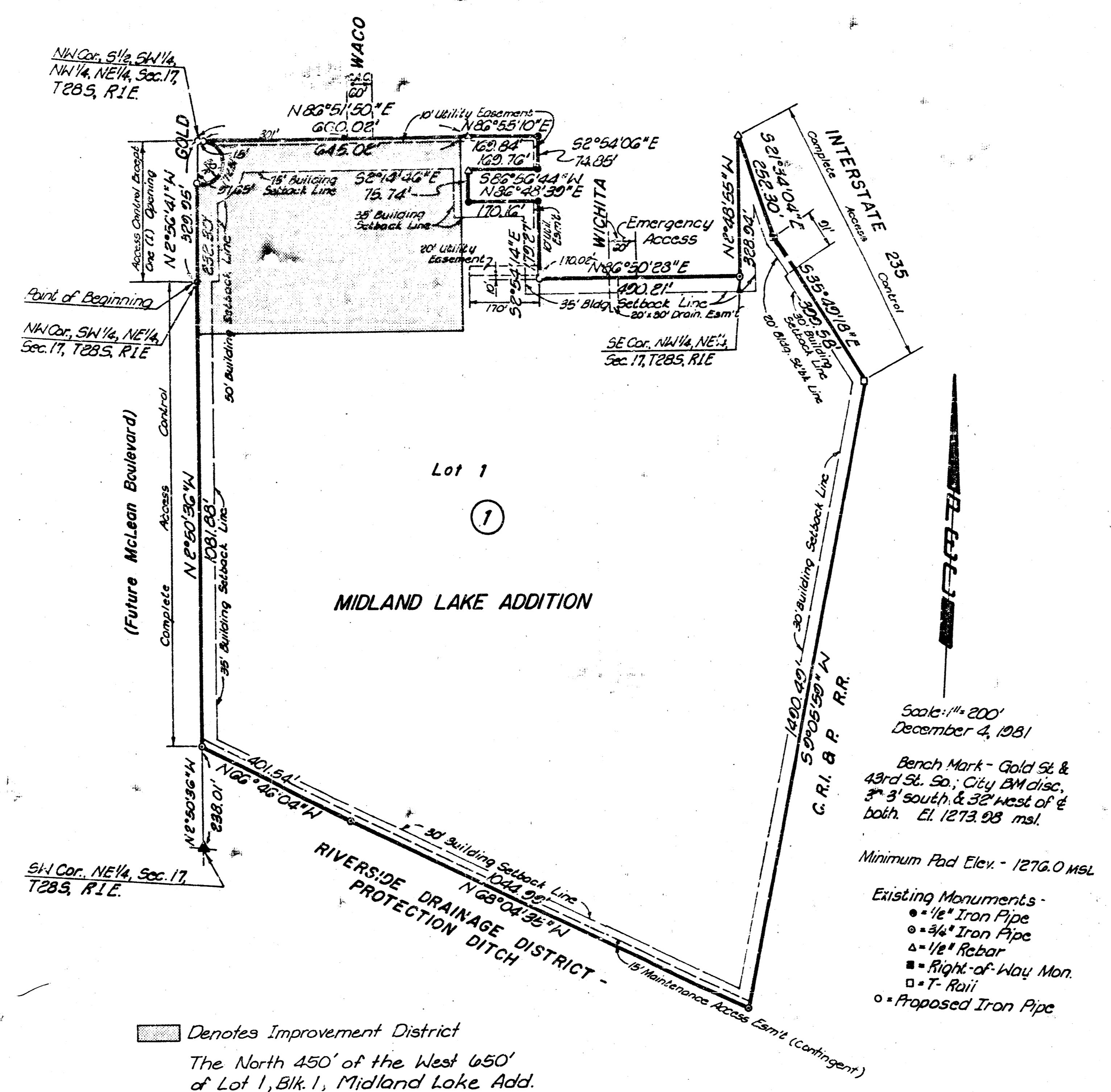
FEBRUARY, 1984

PLANS PREPARED BY
PROFESSIONAL ENGINEERING CONSULTANTS, P.A.
ENGINEERS
WICHITA, KANSAS

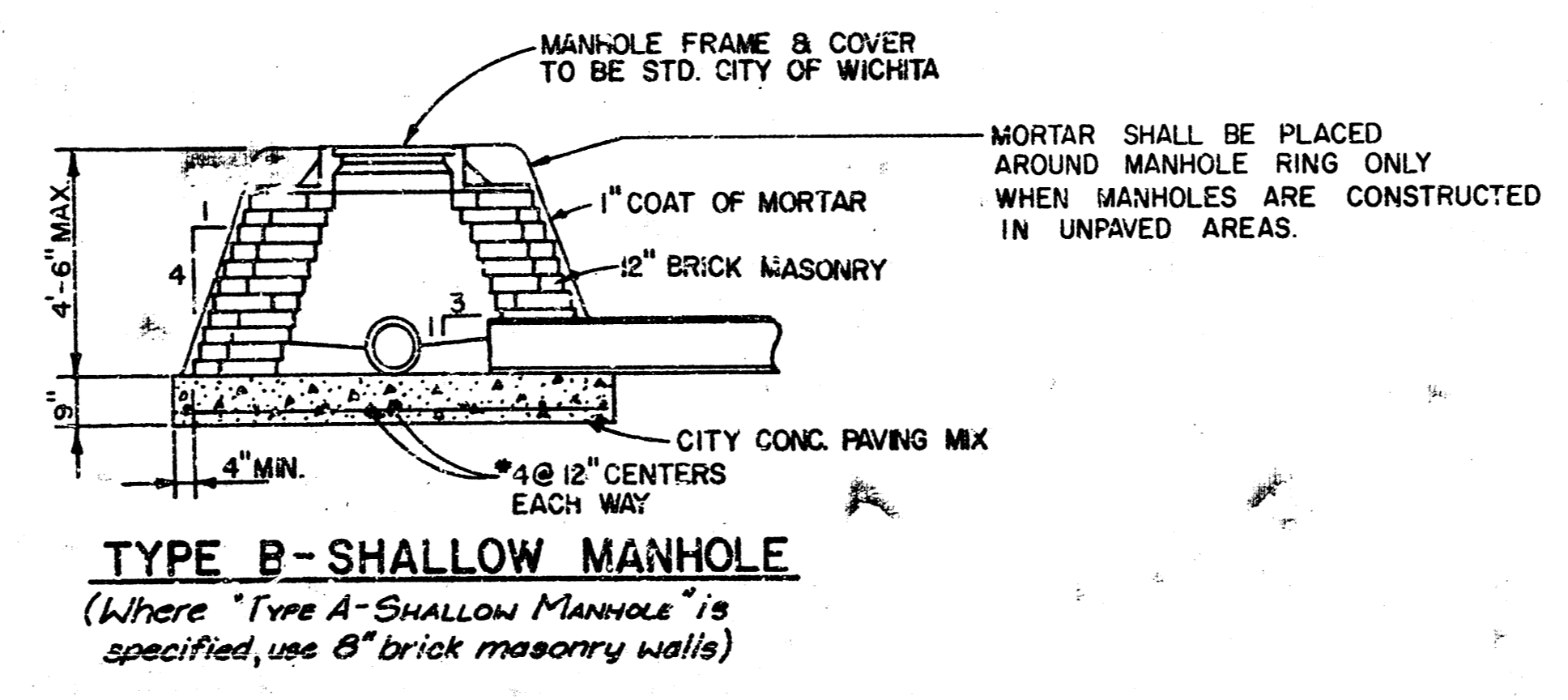




KEY MAP



Denotes Improvement District
 The North 450' of the West 650'
 of Lot 1, Blk. 1, Midland Lake Add.



TYPE B-SHALLOW MANHOLE
 (Where Type A-Shallow Manhole is specified, use 8\"/>

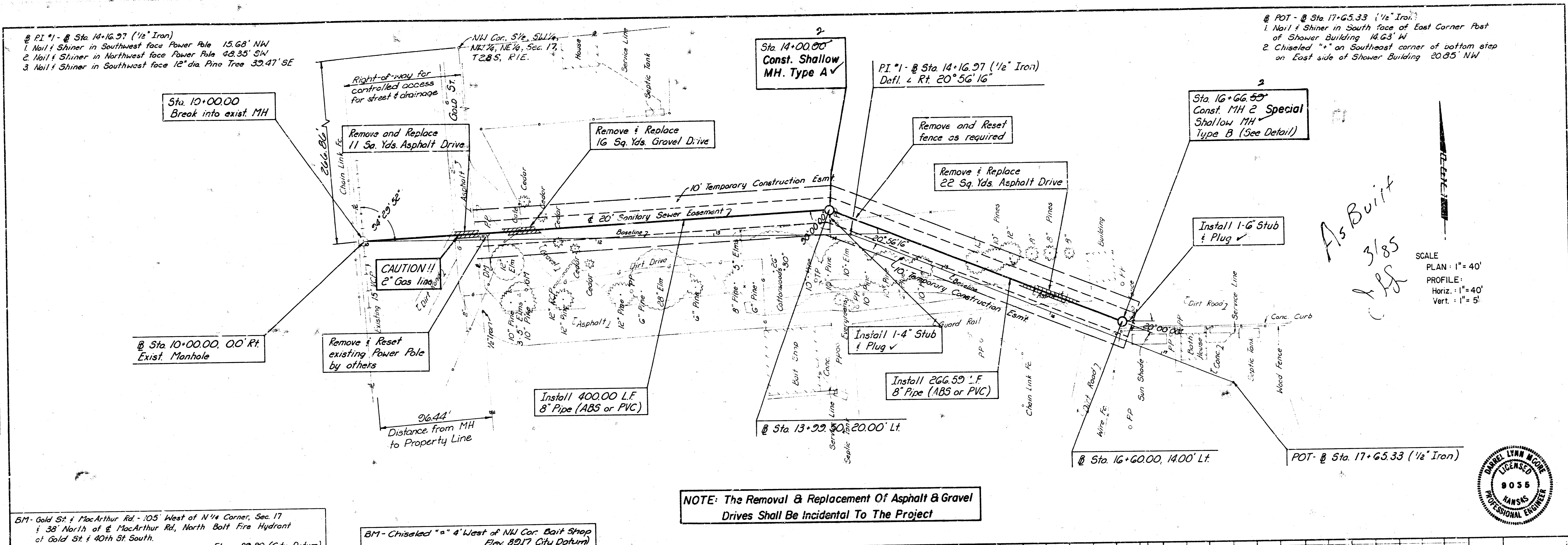
- GENERAL NOTES
1. ALL CONSTRUCTION AND MATERIALS TO COMPLY WITH CITY OF WICHITA SPECIFICATIONS AND STANDARDS.
 2. ALL ELEVATIONS SHOWN ARE CITY OF WICHITA DATUM (USGS-1187.4 = CITY DATUM).
 3. THE CONTRACTOR SHALL LIMIT THE EXTENT OF TRENCH TO REMAIN OPEN OVERNIGHTS AND WEEKENDS TO LESS THAN 50 FEET.
 4. AT LEAST 24 HOURS PRIOR TO BEGINNING EXCAVATION (EXCLUDING WEEKENDS AND HOLIDAYS) THE CONTRACTOR SHALL CONTACT THE UTILITY LOCATION SERVICE "KAN-4-DIG-IT" AT (316) 267-2669 TO REQUEST THE FOLLOWING UTILITY COMPANIES TO LOCATE ANY EXISTING LINES WITHIN THE PROJECT AREA: GAS SERVICE COMPANY, K.G. & E., SOUTHWESTERN BELL TELEPHONE COMPANY, THE WICHITA WATER DEPARTMENT, AIR CAPITAL CABLEVISION, AND ARKLA GAS COMPANY.
 5. THE CONTRACTOR SHALL AVOID REMOVAL OR TRIMMING OF ANY TREES WHERE POSSIBLE. WHERE THE CONTRACTOR BELIEVES THE REMOVAL OR TRIMMING IS UNAVOIDABLE, HE SHALL COORDINATE SUCH WORK WITH THE ENGINEER.
 6. TREE REMOVAL AND TREE TRIMMING SHALL BE DONE BY THE CONTRACTOR UNDER THE SUPERVISION OF THE ENGINEER AND SHALL BE CONSIDERED AS SUBSIDIARY TO OTHER ITEMS OF WORK.
 7. WHERE REMOVAL OF EXISTING FENCES PARALLEL TO THE CONSTRUCTION IS DEEMED NECESSARY BY THE CONTRACTOR, THE CONTRACTOR SHALL COORDINATE REMOVAL WITH THE ENGINEER. REMOVAL AND RESETTING OF FENCES SHALL NOT BE PAID FOR SEPARATELY, BUT SHALL BE CONSIDERED AS SUBSIDIARY TO THE OTHER ITEMS OF WORK.
 8. TREES REMOVED, TREE TRIMMINGS, REMOVED ASPHALT, AND OTHER DEBRIS SHALL BE HAULED FROM THE SITE BY THE CONTRACTOR AND WASTED AS DIRECTED BY THE ENGINEER AT NO ADDITIONAL COST TO THE OWNER.
 9. THE CONTRACTOR SHALL RESTORE ALL DITCHES, SWALES, ROAD SHOULDERS, ENTRANCES, AND BANK LINES TO THEIR ORIGINAL SLOPES AND GRADES.
 10. THE CONTRACTOR SHALL BE RESPONSIBLE FOR MAINTAINING CONTINUOUS FLOW OF SEWAGE THROUGH CONSTRUCTION. CONTRACTOR'S PROPOSED METHOD FOR MAINTAINING SEWAGE FLOW SHALL BE APPROVED BY THE ENGINEER. COST OF MAINTAINING FLOW OF SEWAGE THROUGH CONSTRUCTION WILL NOT BE PAID FOR DIRECTLY AND THIS COST SHALL BE CONSIDERED SUBSIDIARY TO THE OTHER ITEMS OF WORK.
 11. RISERS AND ADDITIONAL STUBS SHALL BE INSTALLED ON THIS PROJECT TO SERVE INDIVIDUAL LOTS WHEN ORDERED BY THE FIELD ENGINEER. RISER CONSTRUCTION SHALL CONFORM TO THE CITY OF WICHITA SPECIFICATIONS AND STANDARDS. LOCATIONS OF THE ENDS OF THE RISERS SHALL BE MARKED BY FASTENING GREEN COLORED PLASTIC TAPE TO THE END OF THE RISER AND BROUGHT TO THE GROUND SURFACE AS THE EXCAVATION IS BACKFILLED SUCH THAT THE COLORED TAPE WILL BE VISIBLE WHEN THE PROJECT IS COMPLETED.
 12. PRIOR TO BEGINNING CONSTRUCTION, THE CONTRACTOR SHALL VERIFY THE ELEVATION OF THE EXISTING SEWERLINE. THE CONTRACTOR SHALL NOTIFY THE ENGINEER IMMEDIATELY IF IT APPEARS THAT ADJUSTMENTS TO THE ELEVATION ARE NECESSARY.



No.	Revision	By	Date
CITY OF WICHITA, KANSAS LATERAL 177, SOUTHWEST INTERCEPTOR SEWER KEY MAP & GENERAL NOTES M.E. LINDEBAK, PE CITY ENGINEER CITY OF WICHITA PROJECT NO. 468-76-245-81214-000-000-001 PROFESSIONAL ENGINEERING CONSULTANTS, P.A. ENGINEERS WICHITA, KANSAS			
Designed by	DLM, CAL	Job No.	34-83633
Drawn by	CM	Date	February, 1984
			Sht. 2 of 3

DATE	
NO.	
PLAN	CONVISED, SURVEYED, PLOTTED, ALIGNED, CHECKED, NOTE BOOK, REVISIONS, NO.

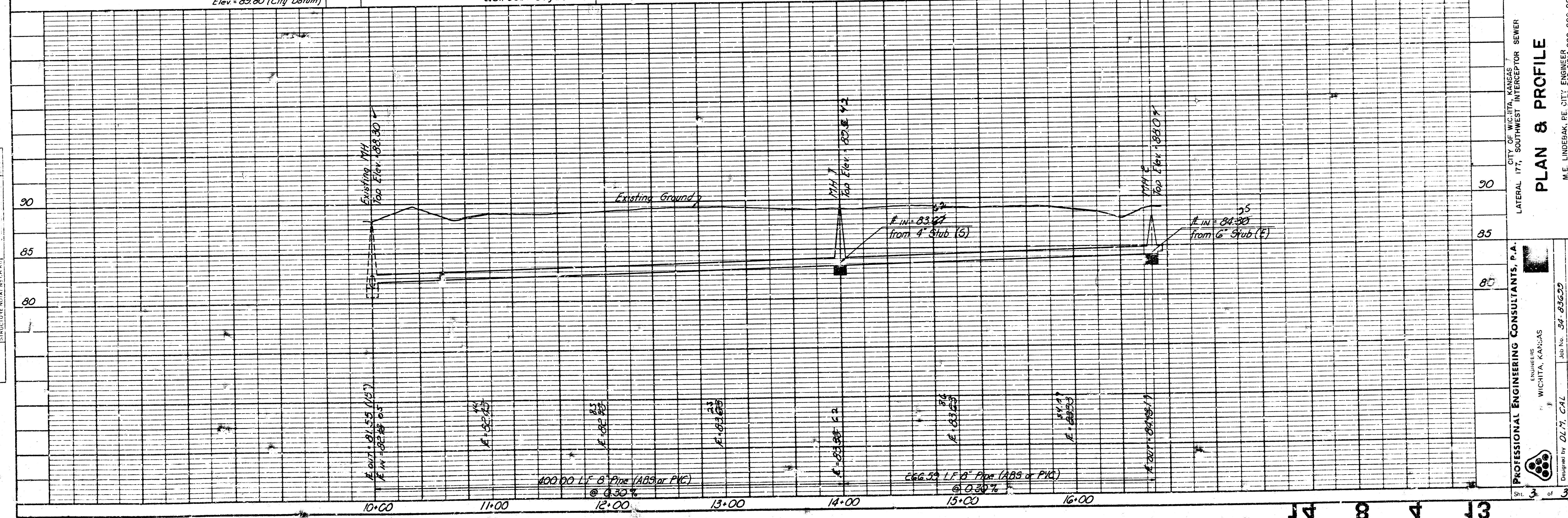
DATE	
NO.	
PROFILE	CONVISED, SURVEYED, PLOTTED, ALIGNED, CHECKED, NOTE BOOK, REVISIONS, NO.



BM - Gold St & MacArthur Rd - 105' West of N 1/4 Corner, Sec. 17 & 38' North of & MacArthur Rd, North Bolt Fire Hydrant of Gold St & 40th St South. Elev. = 83.80 (City Datum)

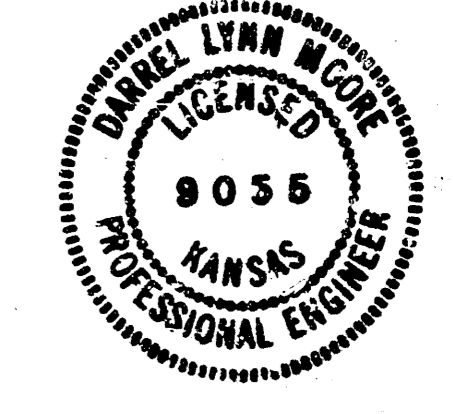
BM - Chiseled "a" 4' West of NW Cor. Bolt Shop Elev. 89.17 (City Datum)

NOTE: The Removal & Replacement Of Asphalt & Gravel Drives Shall Be Incidental To The Project



As Built
3/85
LPS

SCALE
PLAN: 1" = 40'
PROFILE:
Horiz.: 1" = 40'
Vert.: 1" = 5'



PROFESSIONAL ENGINEERING CONSULTANTS, P.A.
ENGINEERS
WICHITA, KANSAS
CITY OF WICHITA, KANSAS
LATERAL 177, SOUTHWEST INTERCEPTOR SEWER
PLAN & PROFILE
M.E. LINDEBAK, PE, CITY ENGINEER
CITY OF WICHITA, PROJECT NO. 466-76-245-81214-000-000-000-000
Job No. 34-83629
Designed by D.L.M., C.A.L.
Drawn by B.T.T.
Date: February, 1984

14 8 4 13