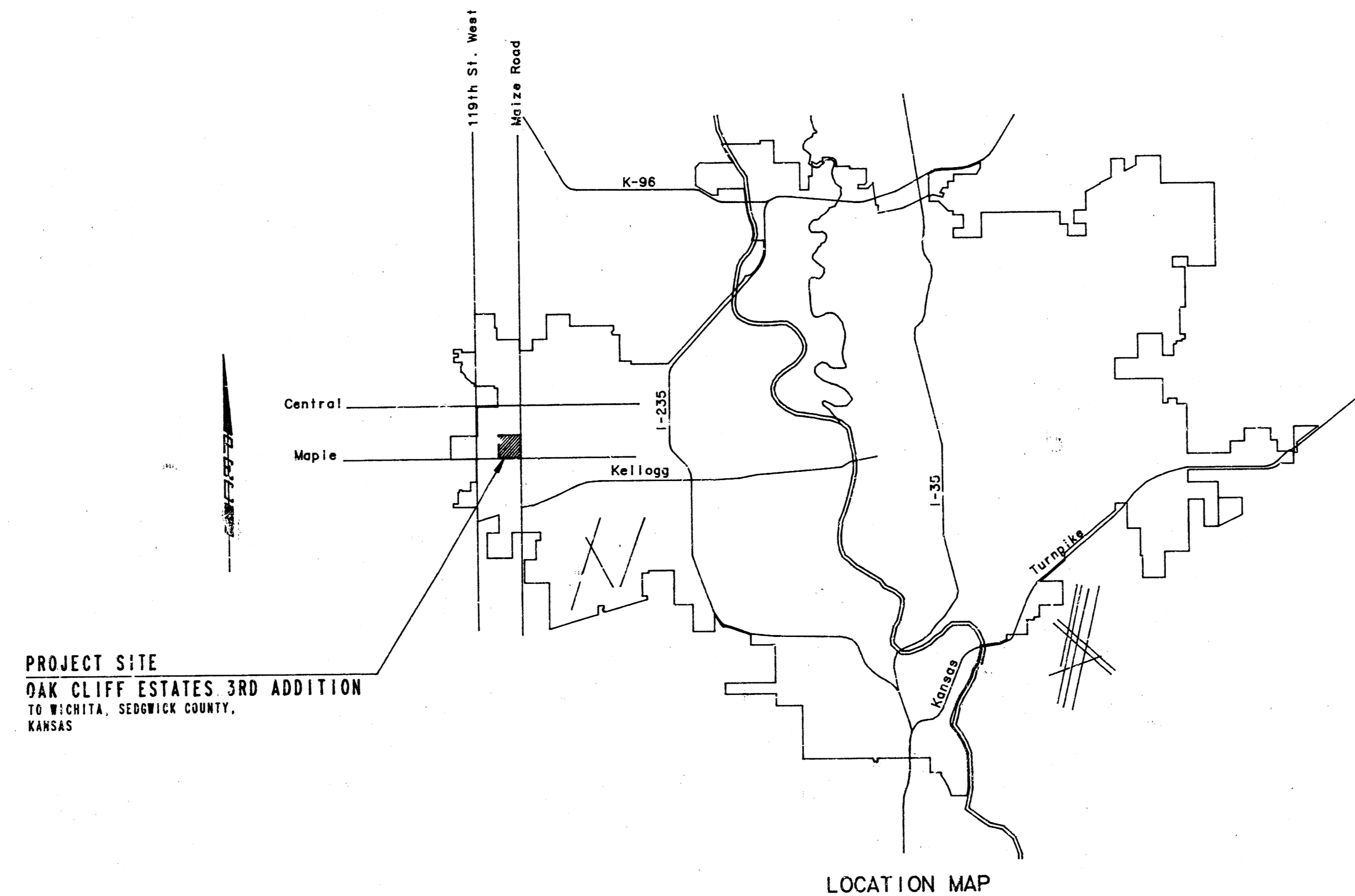


CONSTRUCTION PLANS FOR
LATERAL 203
 OF THE
SOUTHWEST INTERCEPTOR SEWER
 IN
THE CITY OF WICHITA,
 SEDGWICK COUNTY, KANSAS
 MICHAEL E. LINDEBAK, P.E. CITY ENGINEER



INDEX OF SHEETS

SHEET NO. 1	TITLE SHEET
SHEET NO. 2	KEY MAP
SHEET NO. 3	PLAT
SHEET NO. 4-5	PLAN/PROFILE
SHEET NO. 6	MH DETAIL TYPE "P"
SHEET NO. 7	MH DETAIL TYPE "C"
SHEET NO. 8	FRAME & COVER DETAIL

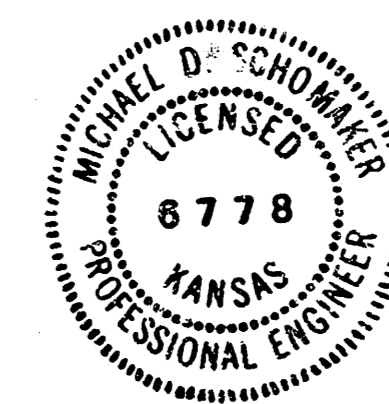
PROJECT SITE
 OAK CLIFF ESTATES 3RD ADDITION
 TO WICHITA, SEDGWICK COUNTY,
 KANSAS

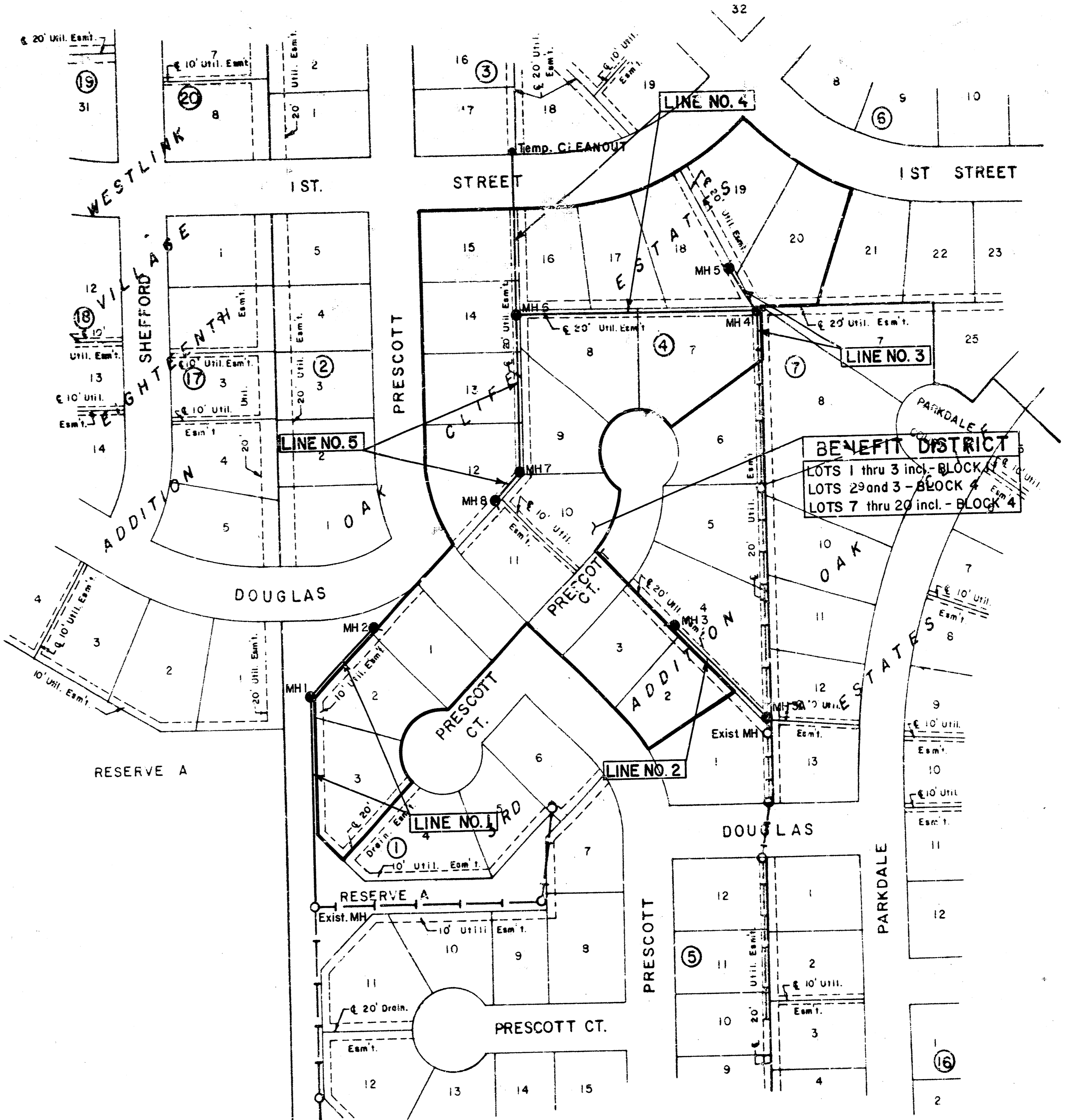
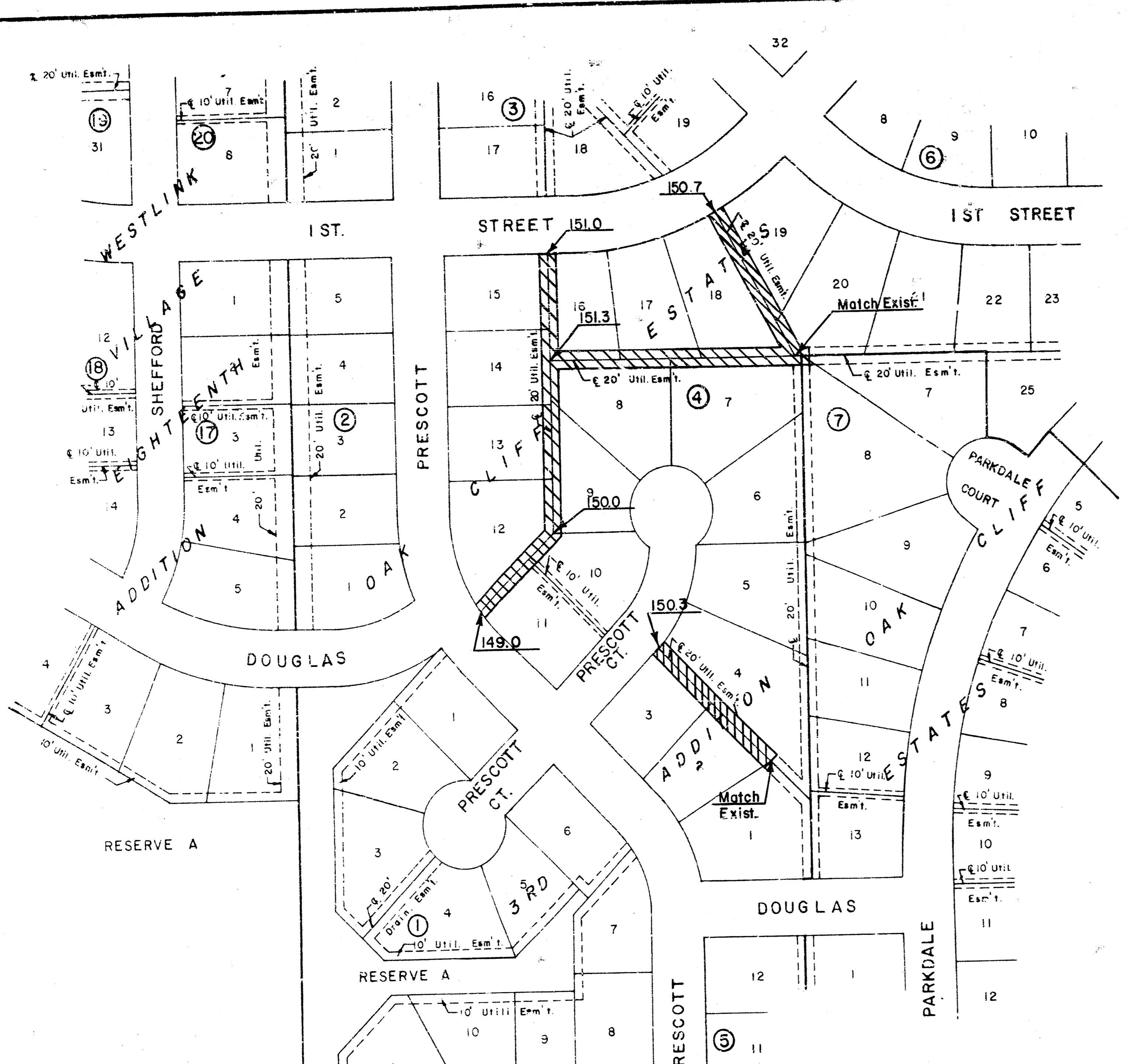
*AS BUILT
 RPL
 12-87*

CITY OF WICHITA PROJECT NO. 468-76-245-81444-000-000-001

FEBRUARY 1987

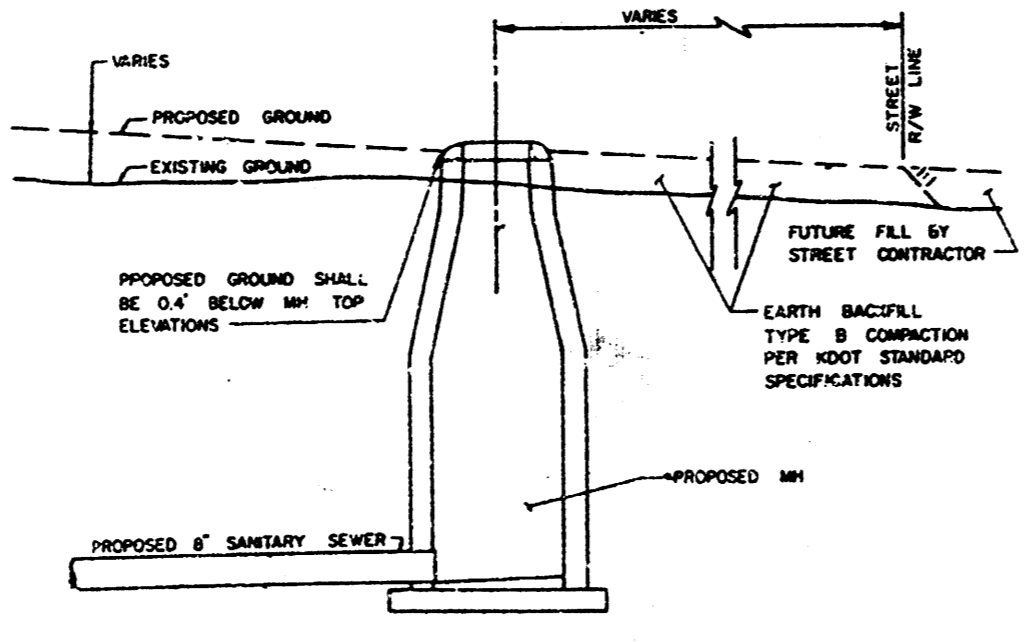
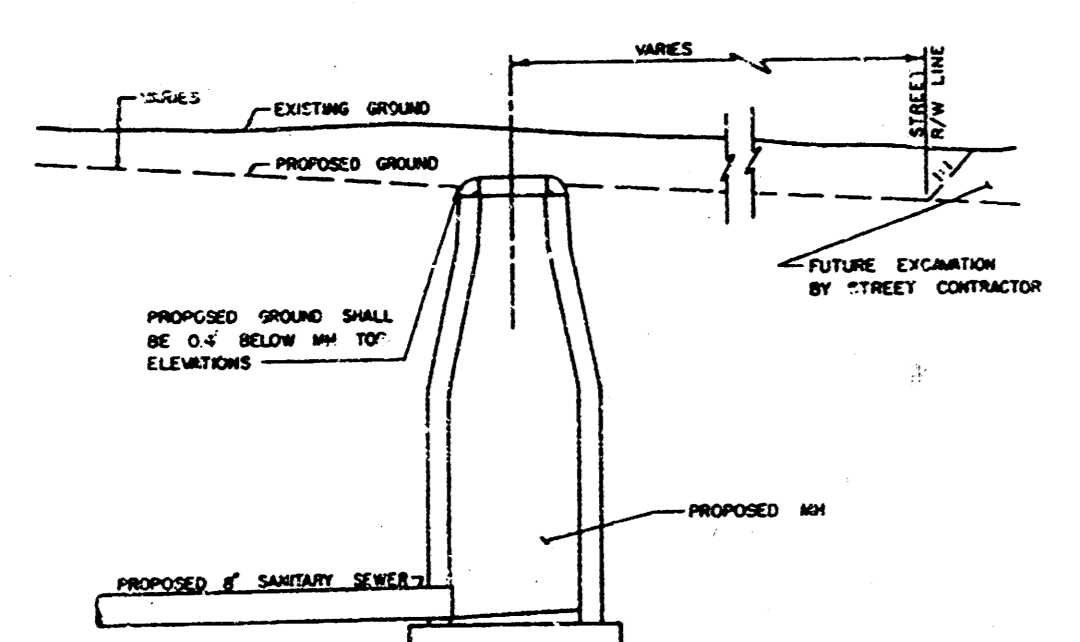
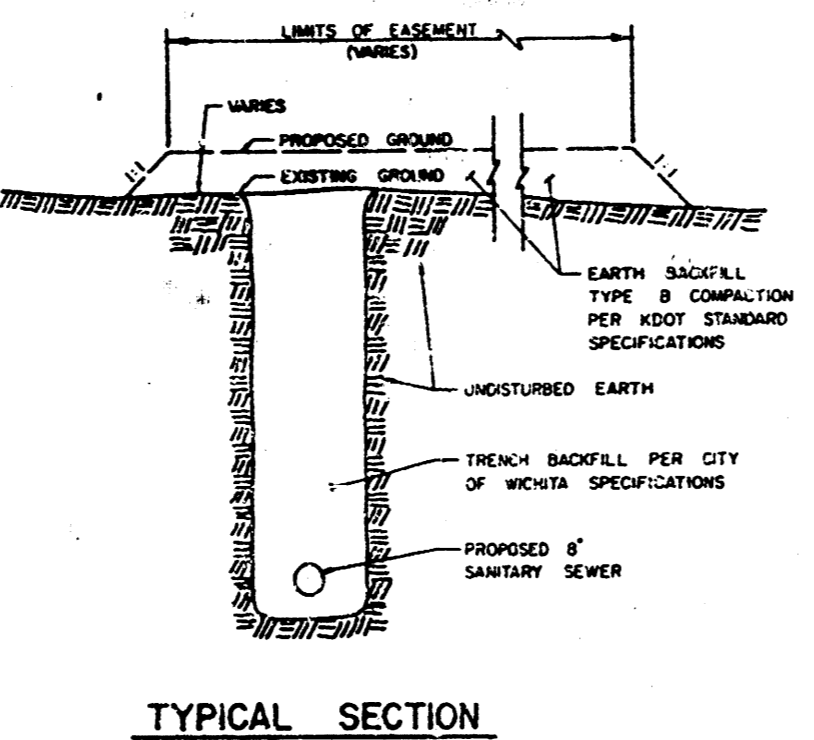
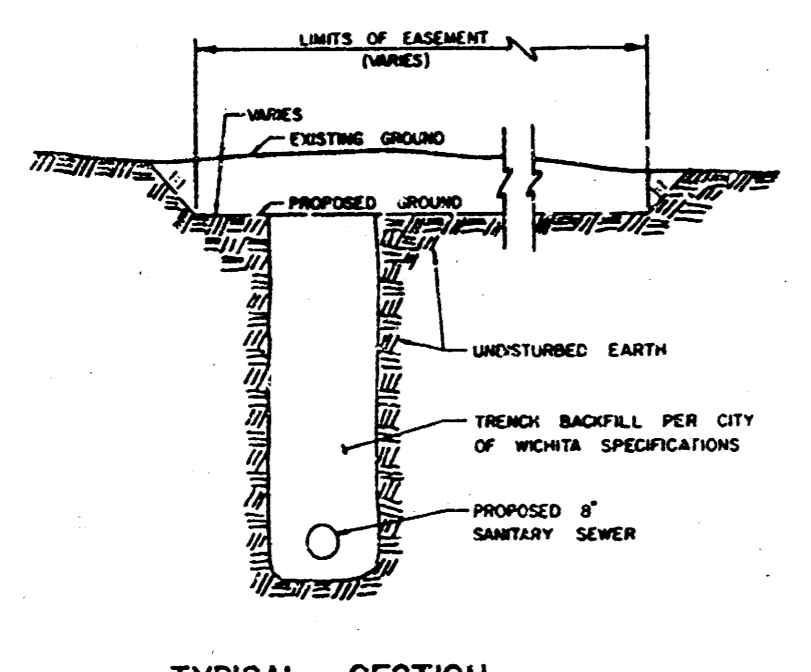
PLANS PREPARED BY
PROFESSIONAL ENGINEERING CONSULTANTS, P.A.
 ENGINEERS
 WICHITA, KANSAS





EASEMENT GRADING PLAN

LIMITS OF EASEMENT GRADING



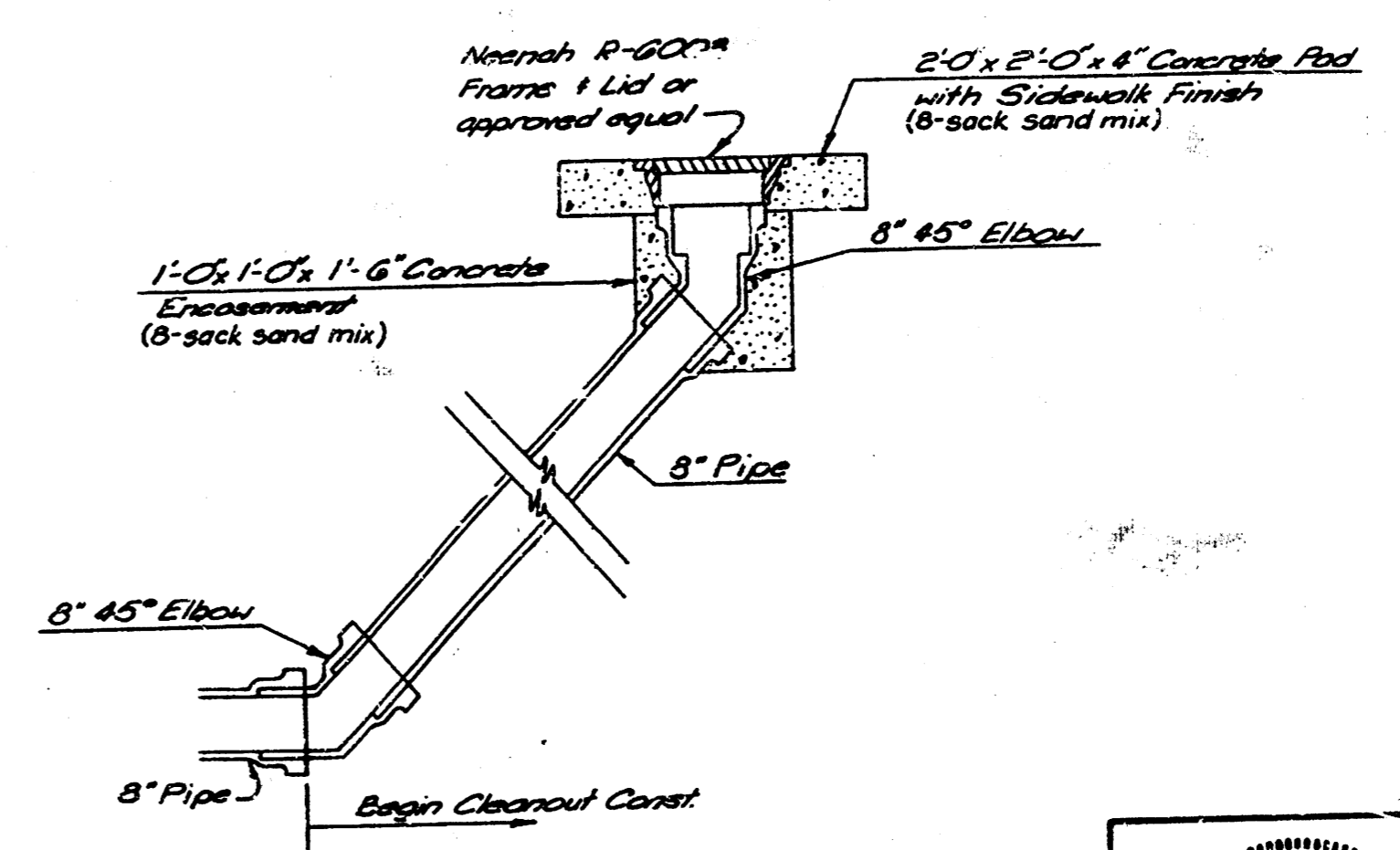
"CUT" SITUATIONS

"FILL" SITUATIONS

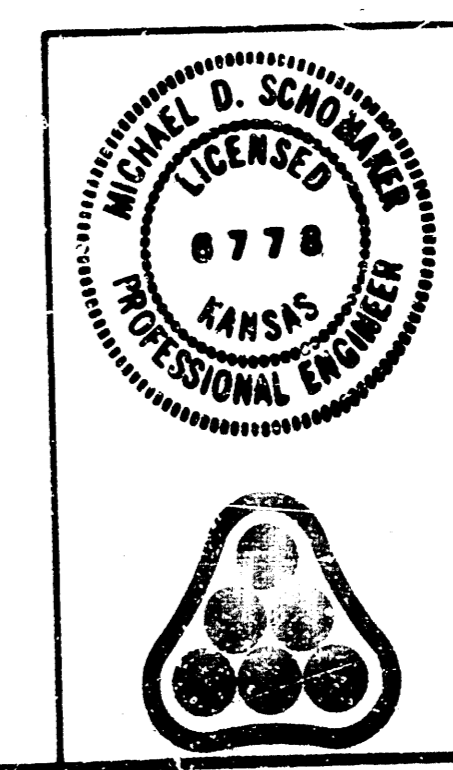
EASEMENT GRADING DETAILS

GENERAL NOTES

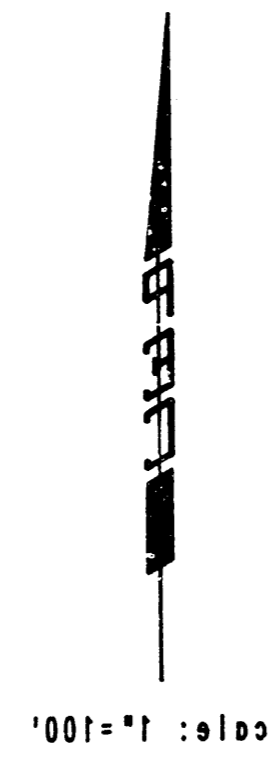
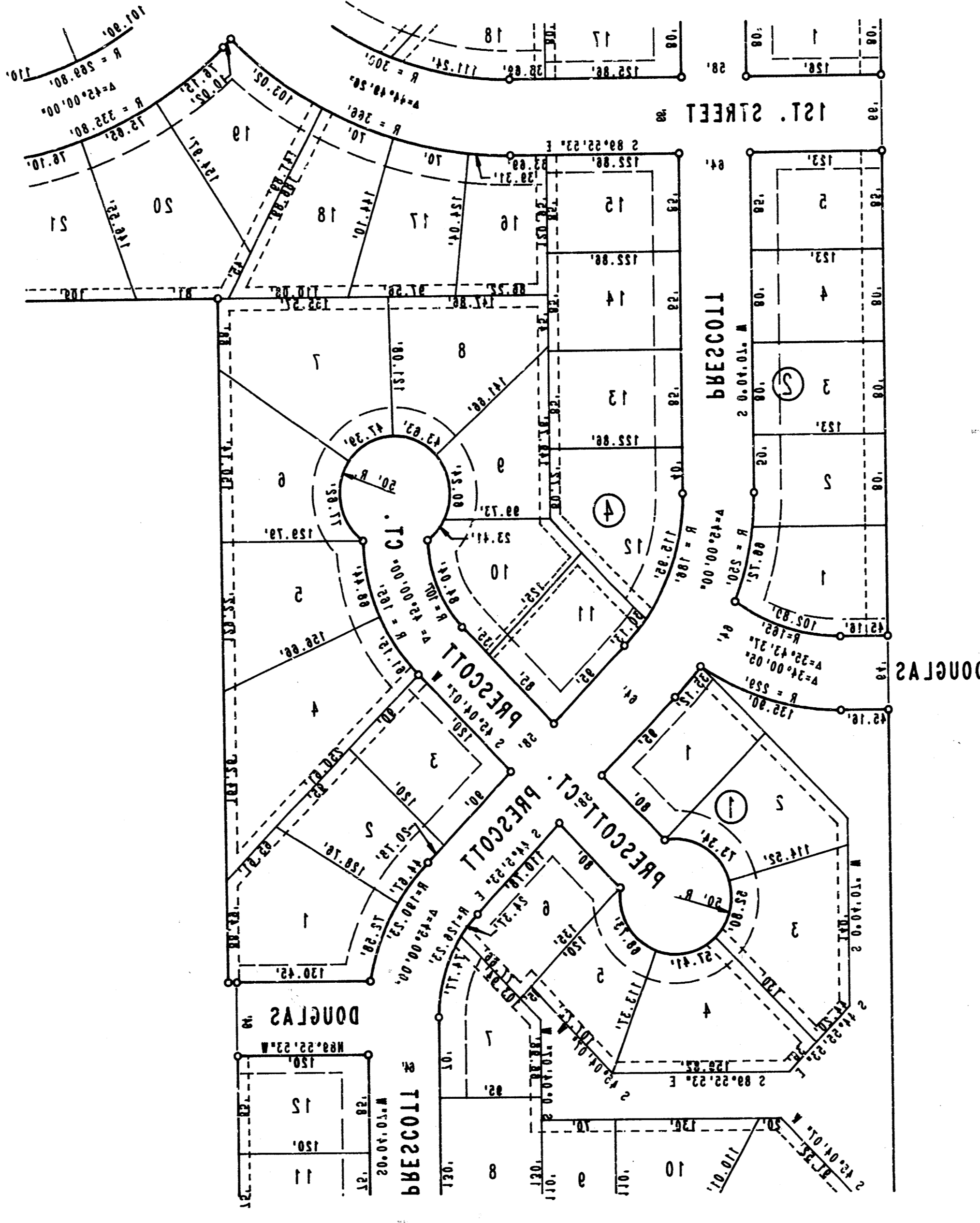
1. ALL CONSTRUCTION AND MATERIALS TO COMPLY WITH CITY OF WICHITA SPECIFICATIONS AND STANDARDS.
2. ALL ELEVATIONS SHOWN ARE CITY OF WICHITA DATUM (USGS-1187.4 = CITY DATUM).
3. THE CONTRACTOR SHALL LIMIT THE EXTENT OF TRENCH TO REMAIN OPEN OVERNIGHT AND WEEKENDS TO LESS THAN 50 FEET.
4. AT LEAST 48 HOURS PRIOR TO BEGINNING LOCATIONS, IF REQUIRED, (EXCLUDING WEEKENDS AND HOLIDAYS), THE CONTRACTOR SHALL CONTACT THE WICHITA ONE-CALL SYSTEM, A UTILITY LOCATION SERVICE, AT (316) 687-2470 TO REQUEST THE FOLLOWING UTILITY COMPANIES TO LOCATE ANY EXISTING LINES WITHIN THE PROJECT AREA: GAS SERVICE COMPANY, K.S.B.E., THE WICHITA WATER DEPARTMENT, AIR CAPITAL, CABLEVISION, AND THE TELEPHONE COMPANY.
5. THE BURIED UTILITIES AS LOCATED ON THE PLANS ARE APPROXIMATE LOCATIONS ONLY. IT SHOULD BE NOTED THAT OTHER BURIED LINES AND CABLES MAY EXIST WHICH ARE NOT SHOWN ON THESE PLANS. THE CONTRACTOR SHALL EXERCISE EXTREME CAUTION DURING TRENCHING OPERATIONS TO AVOID DAMAGING THESE LINES. ANY LINES DAMAGED SHALL BE REPLACED OR REPAIRED IMMEDIATELY AS DIRECTED BY THE ENGINEER AT THE CONTRACTOR'S EXPENSE.
6. THE CONTRACTOR SHALL BE RESPONSIBLE FOR PRESERVING PROPERTY IRONS. THE CONTRACTOR SHALL BE REQUIRED TO RE-ESTABLISH ANY PROPERTY IRONS WHICH ARE DAMAGED OR DESTROYED BY HIS CONSTRUCTION OPERATIONS. SUCH IRONS SHALL BE RE-ESTABLISHED BY A LICENSED LAND SURVEYOR OR A LICENSED PROFESSIONAL ENGINEER IN ACCORDANCE WITH STATE LAWS. ALL COSTS FOR THIS WORK SHALL BE SUBSIDIARY TO THE OTHER ITEMS OF WORK.
7. ALL EXCESS EXCAVATED MATERIAL FROM THIS PROJECT SHALL BE WASTED AS DIRECTED OR APPROVED BY THE ENGINEER. NO EXCESS MATERIAL SHALL BE PLACED WITHIN STREET RIGHTS-OF-WAY. THE CONTRACTOR SHALL CONTACT THE DEVELOPER FOR INFORMATION PERTAINING TO ACCEPTABLE LOCATIONS FOR THE DISPOSITION OF WASTE MATERIAL ON SITE. WASTE MATERIAL SHALL BE GRADED SMOOTH AND SLOPED TO DRAIN. THIS WORK SHALL BE SUBSIDIARY TO OTHER BID ITEMS.
8. CONTRACTOR SHALL GRADE THE SANITARY SEWER ALIGNMENT TO THE PROFILE AND ELEVATIONS SHOWN ON THE EASEMENT GRADING PLAN. THE CONTRACTOR SHOULD VISIT THE SITE TO DETERMINE THE EXTENT OF GRADING PRIOR TO PREPARATION OF HIS BID. ALL COSTS FOR GRADING SHALL BE SUBSIDIARY TO THE PROJECT.
9. CONTRACTOR SHALL PROVIDE POSITIVE GRADING AWAY FROM ALL MANHOLE COVERS.
10. PRIOR TO BEGINNING CONSTRUCTION, THE CONTRACTOR SHALL VERIFY THE LOCATION AND PIPE TYPE OF THE EXISTING 8" S.S. UTILIZED ON THIS PROJECT. THE CONTRACTOR SHALL NOTIFY THE ENGINEER IMMEDIATELY IF IT APPEARS THAT ADJUSTMENTS TO THE PROPOSED LOCATION OR ELEVATION ARE NECESSARY.




8" CLEANOUT DETAIL
(To be Removed when 8" S.S. is extended North)

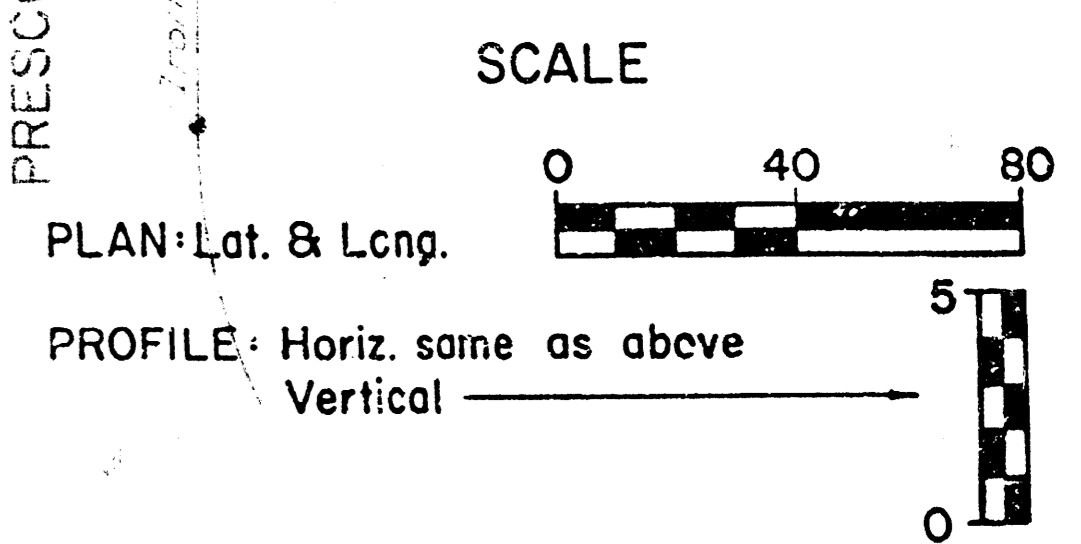
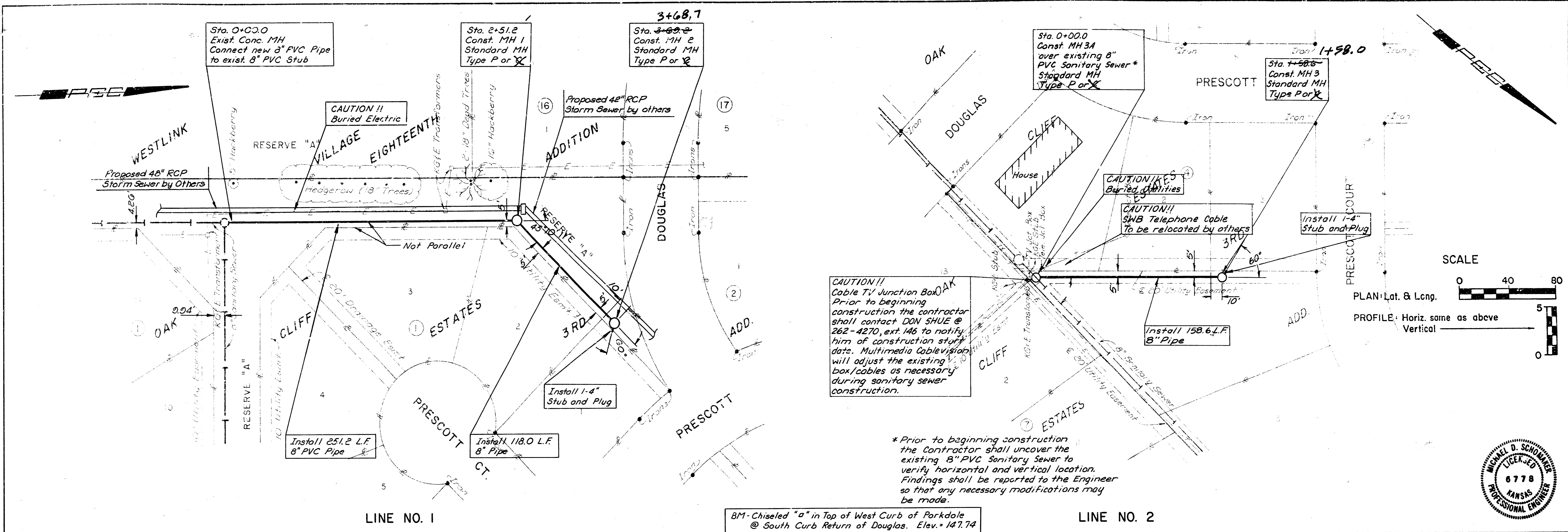


No.	Revision	By	Date
LATERAL 203 OF THE SOUTHWEST INTERCEPTOR SEWER KEY MAP			
MICHAEL E. LINDEBAK, RE - CITY ENGINEER CITY OF WICHITA PROJECT NO. 468-76-245-8444-000-000-001			
PROFESSIONAL ENGINEERING CONSULTANTS, P.A. ENGINEERS WICHITA, KANSAS			
Designed by MDS, CRY	Job No. 34-06630-3	Sh. 2 of 29	
Drawn by TJS	Date February, 1987		



	
PLAT SOUTHWEST INTERCEPTOR SEWER LATERAL 303 OF THE	
PROFESSIONAL ENGINEERING CONSULTANTS, P.A. ENGINEERS WICHITA, KANSAS	
Designed by MICHAEL E. LINDBAK, P.E. - CITY ENGINEER C.O.W. Proj. No. 488-18-282-8144-000-001	Date February, 1987
100 No. 24-88838-7	Spt. 3 of 8
Revision No. Date	3 / 8

PLAN
 1. INSTALL 48" RCP STORM SEWER BY OTHERS
 2. INSTALL 48" RCP STORM SEWER BY OTHERS
 3. INSTALL 48" RCP STORM SEWER BY OTHERS
 4. INSTALL 48" RCP STORM SEWER BY OTHERS
 5. INSTALL 48" RCP STORM SEWER BY OTHERS
 6. INSTALL 48" RCP STORM SEWER BY OTHERS
 7. INSTALL 48" RCP STORM SEWER BY OTHERS
 8. INSTALL 48" RCP STORM SEWER BY OTHERS
 9. INSTALL 48" RCP STORM SEWER BY OTHERS
 10. INSTALL 48" RCP STORM SEWER BY OTHERS
 11. INSTALL 48" RCP STORM SEWER BY OTHERS
 12. INSTALL 48" RCP STORM SEWER BY OTHERS
 13. INSTALL 48" RCP STORM SEWER BY OTHERS
 14. INSTALL 48" RCP STORM SEWER BY OTHERS
 15. INSTALL 48" RCP STORM SEWER BY OTHERS
 16. INSTALL 48" RCP STORM SEWER BY OTHERS
 17. INSTALL 48" RCP STORM SEWER BY OTHERS
 18. INSTALL 48" RCP STORM SEWER BY OTHERS
 19. INSTALL 48" RCP STORM SEWER BY OTHERS
 20. INSTALL 48" RCP STORM SEWER BY OTHERS
 21. INSTALL 48" RCP STORM SEWER BY OTHERS
 22. INSTALL 48" RCP STORM SEWER BY OTHERS
 23. INSTALL 48" RCP STORM SEWER BY OTHERS
 24. INSTALL 48" RCP STORM SEWER BY OTHERS
 25. INSTALL 48" RCP STORM SEWER BY OTHERS
 26. INSTALL 48" RCP STORM SEWER BY OTHERS
 27. INSTALL 48" RCP STORM SEWER BY OTHERS
 28. INSTALL 48" RCP STORM SEWER BY OTHERS
 29. INSTALL 48" RCP STORM SEWER BY OTHERS
 30. INSTALL 48" RCP STORM SEWER BY OTHERS
 31. INSTALL 48" RCP STORM SEWER BY OTHERS
 32. INSTALL 48" RCP STORM SEWER BY OTHERS
 33. INSTALL 48" RCP STORM SEWER BY OTHERS
 34. INSTALL 48" RCP STORM SEWER BY OTHERS
 35. INSTALL 48" RCP STORM SEWER BY OTHERS
 36. INSTALL 48" RCP STORM SEWER BY OTHERS
 37. INSTALL 48" RCP STORM SEWER BY OTHERS
 38. INSTALL 48" RCP STORM SEWER BY OTHERS
 39. INSTALL 48" RCP STORM SEWER BY OTHERS
 40. INSTALL 48" RCP STORM SEWER BY OTHERS
 41. INSTALL 48" RCP STORM SEWER BY OTHERS
 42. INSTALL 48" RCP STORM SEWER BY OTHERS
 43. INSTALL 48" RCP STORM SEWER BY OTHERS
 44. INSTALL 48" RCP STORM SEWER BY OTHERS
 45. INSTALL 48" RCP STORM SEWER BY OTHERS
 46. INSTALL 48" RCP STORM SEWER BY OTHERS
 47. INSTALL 48" RCP STORM SEWER BY OTHERS
 48. INSTALL 48" RCP STORM SEWER BY OTHERS
 49. INSTALL 48" RCP STORM SEWER BY OTHERS
 50. INSTALL 48" RCP STORM SEWER BY OTHERS
 51. INSTALL 48" RCP STORM SEWER BY OTHERS
 52. INSTALL 48" RCP STORM SEWER BY OTHERS
 53. INSTALL 48" RCP STORM SEWER BY OTHERS
 54. INSTALL 48" RCP STORM SEWER BY OTHERS
 55. INSTALL 48" RCP STORM SEWER BY OTHERS
 56. INSTALL 48" RCP STORM SEWER BY OTHERS
 57. INSTALL 48" RCP STORM SEWER BY OTHERS
 58. INSTALL 48" RCP STORM SEWER BY OTHERS
 59. INSTALL 48" RCP STORM SEWER BY OTHERS
 60. INSTALL 48" RCP STORM SEWER BY OTHERS
 61. INSTALL 48" RCP STORM SEWER BY OTHERS
 62. INSTALL 48" RCP STORM SEWER BY OTHERS
 63. INSTALL 48" RCP STORM SEWER BY OTHERS
 64. INSTALL 48" RCP STORM SEWER BY OTHERS
 65. INSTALL 48" RCP STORM SEWER BY OTHERS
 66. INSTALL 48" RCP STORM SEWER BY OTHERS
 67. INSTALL 48" RCP STORM SEWER BY OTHERS
 68. INSTALL 48" RCP STORM SEWER BY OTHERS
 69. INSTALL 48" RCP STORM SEWER BY OTHERS
 70. INSTALL 48" RCP STORM SEWER BY OTHERS
 71. INSTALL 48" RCP STORM SEWER BY OTHERS
 72. INSTALL 48" RCP STORM SEWER BY OTHERS
 73. INSTALL 48" RCP STORM SEWER BY OTHERS
 74. INSTALL 48" RCP STORM SEWER BY OTHERS
 75. INSTALL 48" RCP STORM SEWER BY OTHERS
 76. INSTALL 48" RCP STORM SEWER BY OTHERS
 77. INSTALL 48" RCP STORM SEWER BY OTHERS
 78. INSTALL 48" RCP STORM SEWER BY OTHERS
 79. INSTALL 48" RCP STORM SEWER BY OTHERS
 80. INSTALL 48" RCP STORM SEWER BY OTHERS
 81. INSTALL 48" RCP STORM SEWER BY OTHERS
 82. INSTALL 48" RCP STORM SEWER BY OTHERS
 83. INSTALL 48" RCP STORM SEWER BY OTHERS
 84. INSTALL 48" RCP STORM SEWER BY OTHERS
 85. INSTALL 48" RCP STORM SEWER BY OTHERS
 86. INSTALL 48" RCP STORM SEWER BY OTHERS
 87. INSTALL 48" RCP STORM SEWER BY OTHERS
 88. INSTALL 48" RCP STORM SEWER BY OTHERS
 89. INSTALL 48" RCP STORM SEWER BY OTHERS
 90. INSTALL 48" RCP STORM SEWER BY OTHERS
 91. INSTALL 48" RCP STORM SEWER BY OTHERS
 92. INSTALL 48" RCP STORM SEWER BY OTHERS
 93. INSTALL 48" RCP STORM SEWER BY OTHERS
 94. INSTALL 48" RCP STORM SEWER BY OTHERS
 95. INSTALL 48" RCP STORM SEWER BY OTHERS
 96. INSTALL 48" RCP STORM SEWER BY OTHERS
 97. INSTALL 48" RCP STORM SEWER BY OTHERS
 98. INSTALL 48" RCP STORM SEWER BY OTHERS
 99. INSTALL 48" RCP STORM SEWER BY OTHERS
 100. INSTALL 48" RCP STORM SEWER BY OTHERS



CAUTION!! Cable TV Junction Box
 Prior to beginning construction the contractor shall contact DDM SHUE @ 262-4270, ext. 146 to notify him of construction start date. Multimedia Cablevision will adjust the existing box/cables as necessary during sanitary sewer construction.

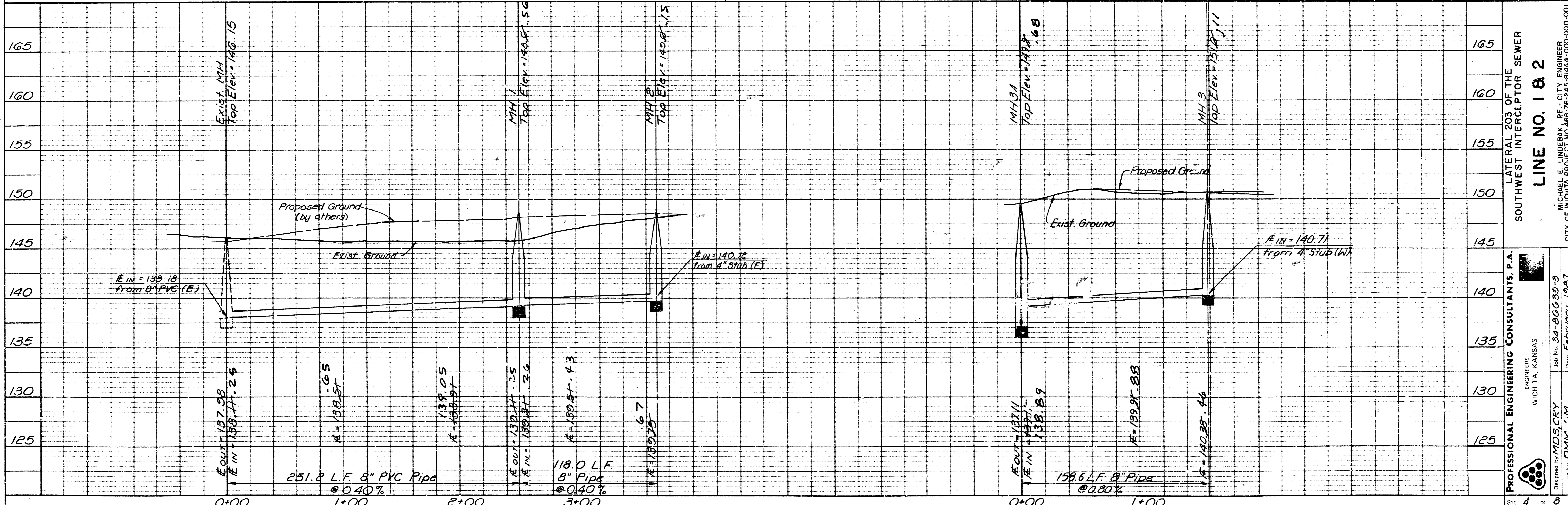
* Prior to beginning construction the Contractor shall uncover the existing 8" PVC Sanitary Sewer to verify horizontal and vertical location. Findings shall be reported to the Engineer so that any necessary modifications may be made.



LINE NO. 1

BM - Chiseled "a" in Top of West Curb of Parkdale @ South Curb Return of Douglas. Elev. = 147.74

LINE NO. 2



PROFILE
 1. EXISTING GROUND
 2. PROPOSED GROUND
 3. 8\"/>

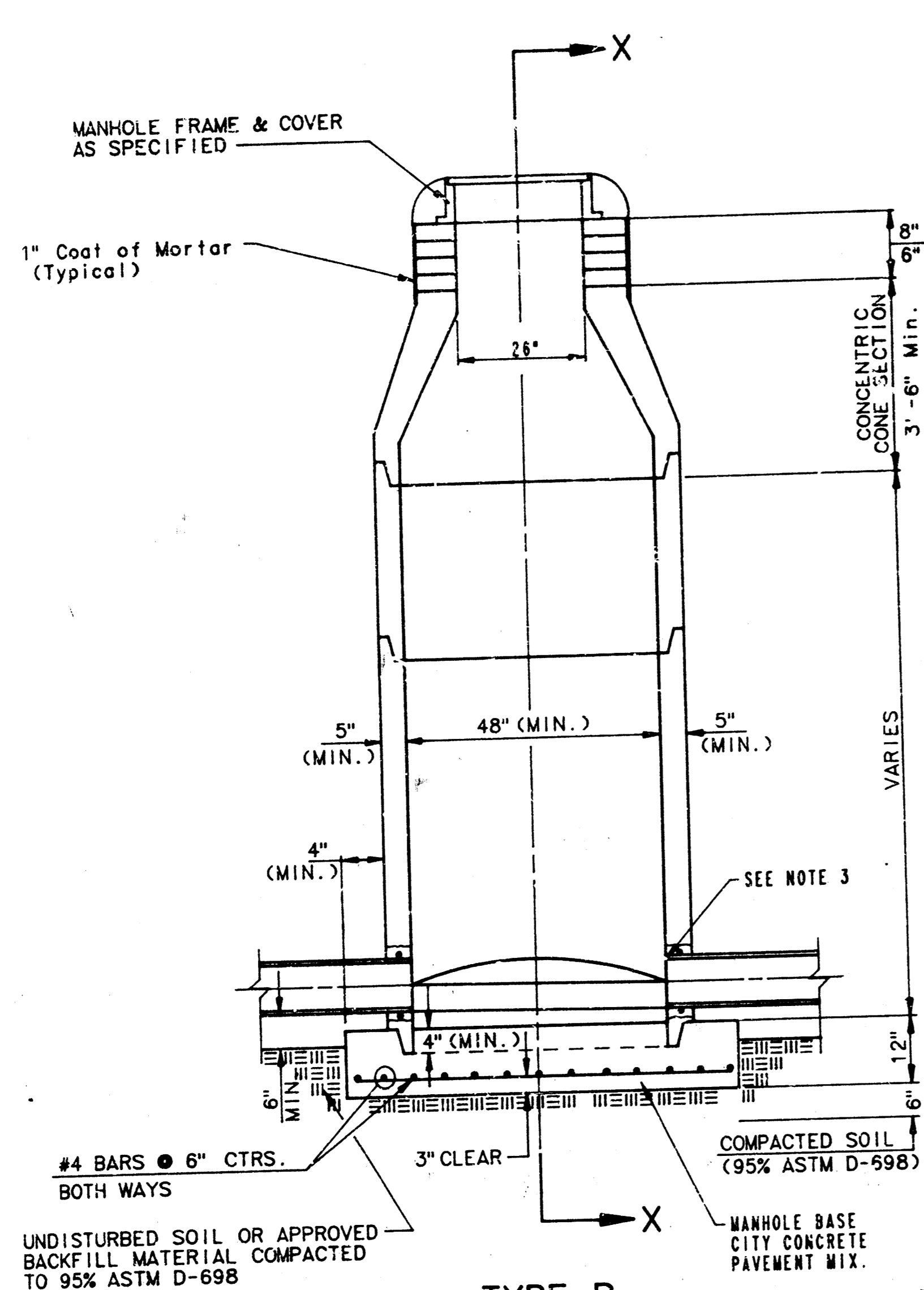
PROFESSIONAL ENGINEERING CONSULTANTS, P.A.
 ENGINEERS
 WICHITA, KANSAS
 Job No. 34-80630-3
 Drawn by MDS/CFY
 Date February 1987
 Lateral 203 of the Southwest Interceptor Sewer
 LINE NO. 1 & 2
 MICHAEL E. LINDERBAUM, P.E., CITY ENGINEER
 CITY OF WICHITA, PROJECT NO. 88-145-16-245-8444-C00-000-001

SEWER APPURTENANCES DETAILS

ADOPTED AS STANDARD DESIGN

BY

CITY OF WICHITA

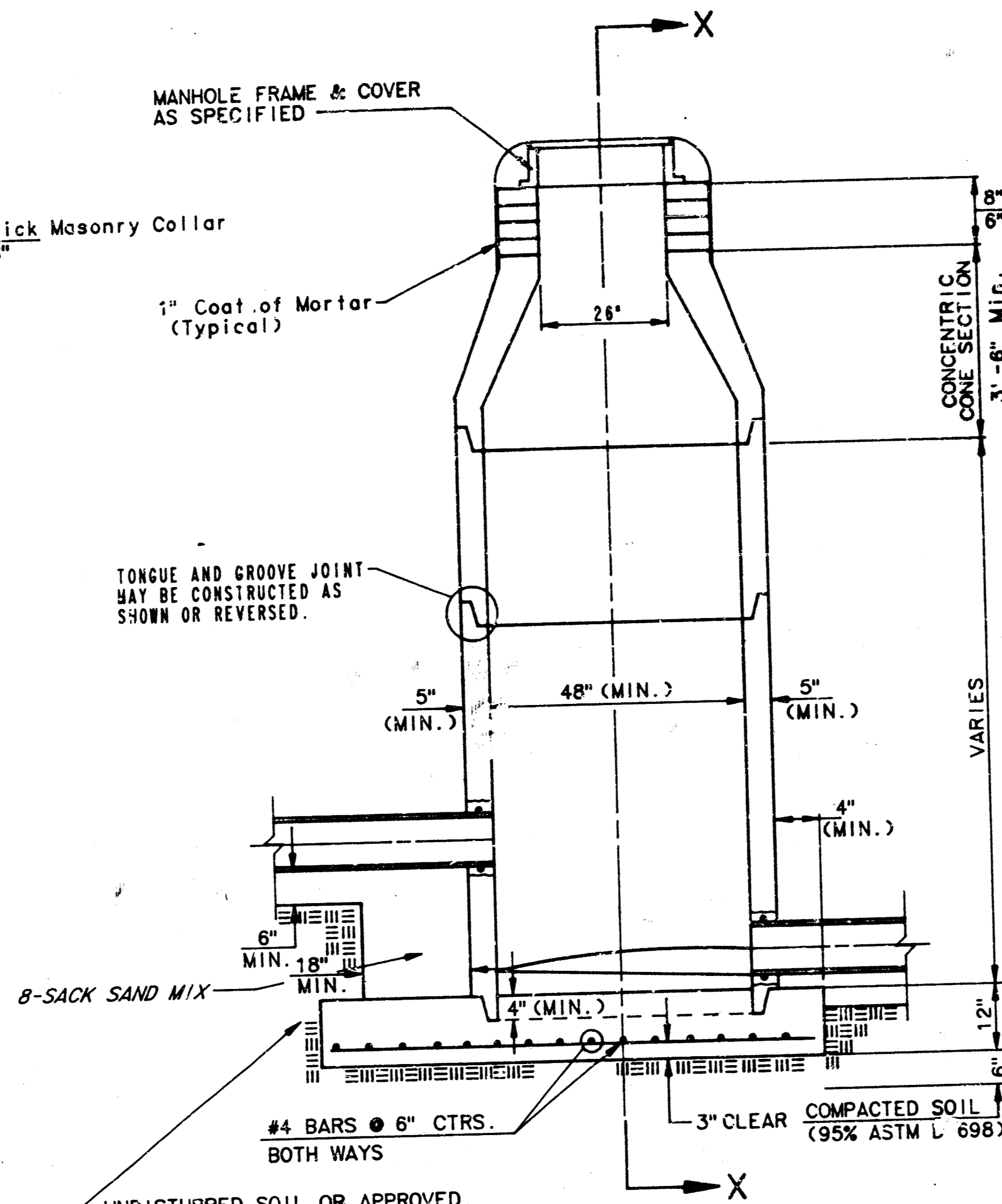


**TYPE P
STANDARD MANHOLE**

GENERAL NOTES

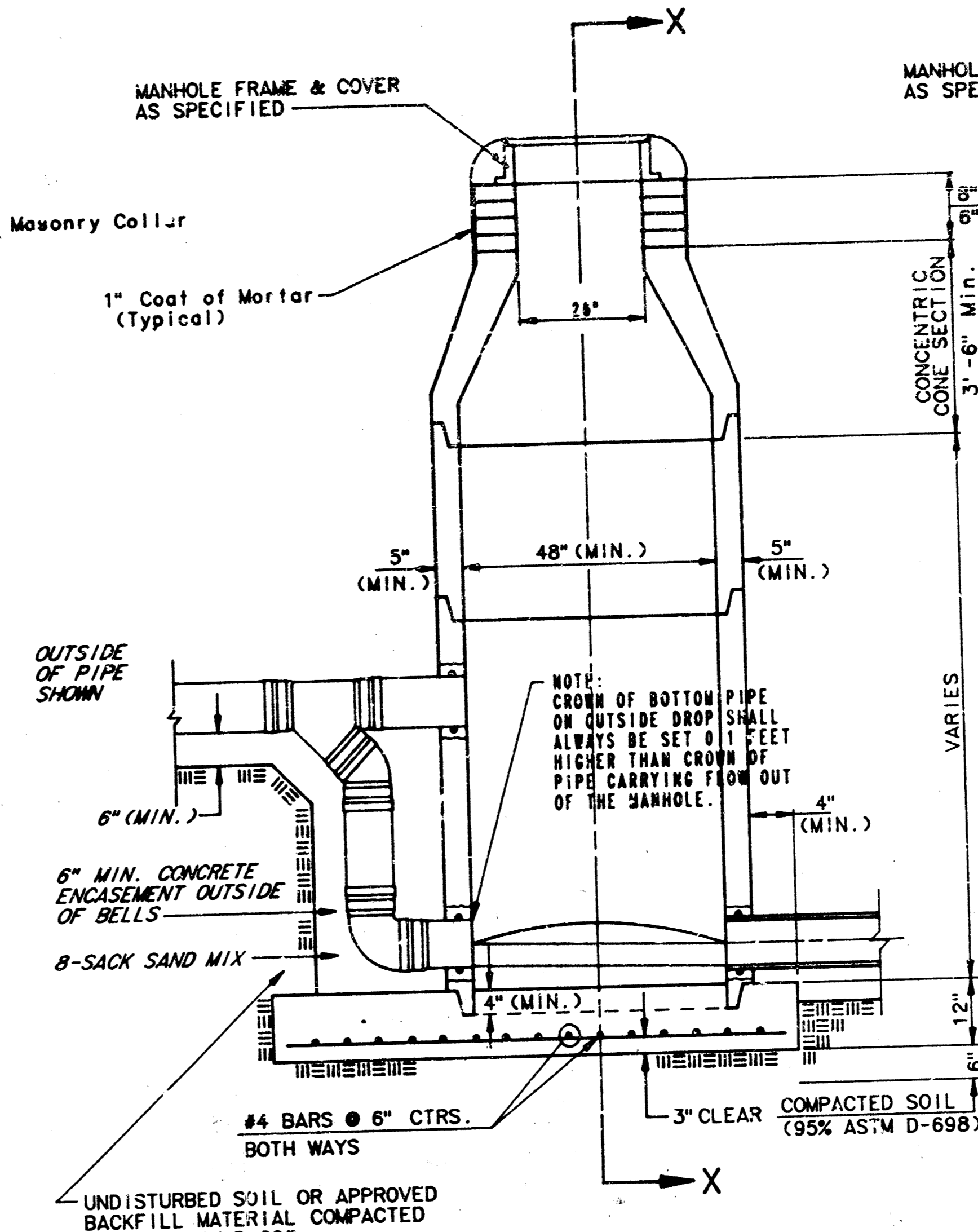
PRECAST MANHOLE NOTES

1. ALL PRECAST CONCRETE MANHOLE SECTIONS SHALL CONFORM TO THE LATEST EDITION OF A.S.T.M. C478 AS MODIFIED BY THE SPECIFICATIONS.
2. NON-SHRINK GROUT SHALL BE NON-METALLIC TYPE.
3. APPROVED FLEXIBLE WATERSTOP GASKETS SHALL BE INSTALLED TO JOIN THE SEWER TO THE MANHOLE WALL WHEN A B.S. COMPOSITE PIPE OR P.V.C. PIPE IS USED. FOR OTHER TYPES OF PIPE THE SEWER PIPE SHALL BE GROUDED IN PLACE WITH NON-SHRINK GROUT. THE SEWER PIPE SHALL BE SUPPORTED WITH CONCRETE ENCASEMENT A MINIMUM OF 3 FEET FROM THE MANHOLE WALL AND TO THE FIRST JOINT FOR V.C.P. SUCH THAT THE JOINT REMAINS FLEXIBLE.
4. ALL INSIDE SURFACES OF THE CONCRETE MANHOLE WHICH WOULD BE EXPOSED TO SEWER GAS SHALL BE COATED WITH 2 COATS TNEWC SERIES 66 HI-BUILD EPOXYLINE, DRY THICKNESS OF 8 MILS (MIN.)
5. EXTERIOR MANHOLE WALLS SHALL BE COATED WITH 1 COAT MOBILARMA 633 BITUMINUS COATING.
6. JOINT SEALING COMPOUND SHALL BE KENT SEAL NO. 2 OR APPROVED EQUAL.
7. PRECAST MANHOLES SHALL BE SET AT LEAST 4 INCHES INTO THE MANHOLE BASE.
8. TOP OF MANHOLE FLOOR SLAB SHALL BE AT LEAST 3 INCHES BELOW THE FLOW LINE OF THE OUTLET PIPE TO INSURE SUFFICIENT MINIMUM THICKNESS OF SHAPED INVERT.
9. LETTING HOLES SHALL BE FILLED WITH NON-SHRINK GROUT AND THE BOTTOM SURFACE COATED AS SPECIFIED.
10. MORTAR USED IN MASONRY CONSTRUCTION SHALL CONTAIN 8 SACKS OF CEMENT PER CUBIC YARD. CONCRETE USED IN MANHOLE BASES SHALL CONFORM TO THE REQUIREMENTS OF CONCRETE FOR CONCRETE PAVEMENT CONSTRUCTION AS SPECIFIED IN THE CITY STANDARD PAVING SPECIFICATIONS USING CITY CONCRETE PAVEMENT MIX WITHOUT AIR ENTRAINING ADMIXTURE. MORTAR SHALL BE PLACED AROUND THE MANHOLE RING AS SHOWN ON THE DRAWINGS WHEN MANHOLES ARE CONSTRUCTED IN UNPAVED AREAS. MANHOLES CONSTRUCTED WHERE PIPE SIZES ARE SMALLER THAN 24" SHALL HAVE AN INSIDE DIAMETER OF 4". MANHOLES CONSTRUCTED WHERE PIPE SIZES ARE 24" OR LARGER SHALL HAVE AN INSIDE DIAMETER OF 5". COMPLETED MANHOLE SHALL BE WITHOUT LEAKS AND WATER-TIGHT.



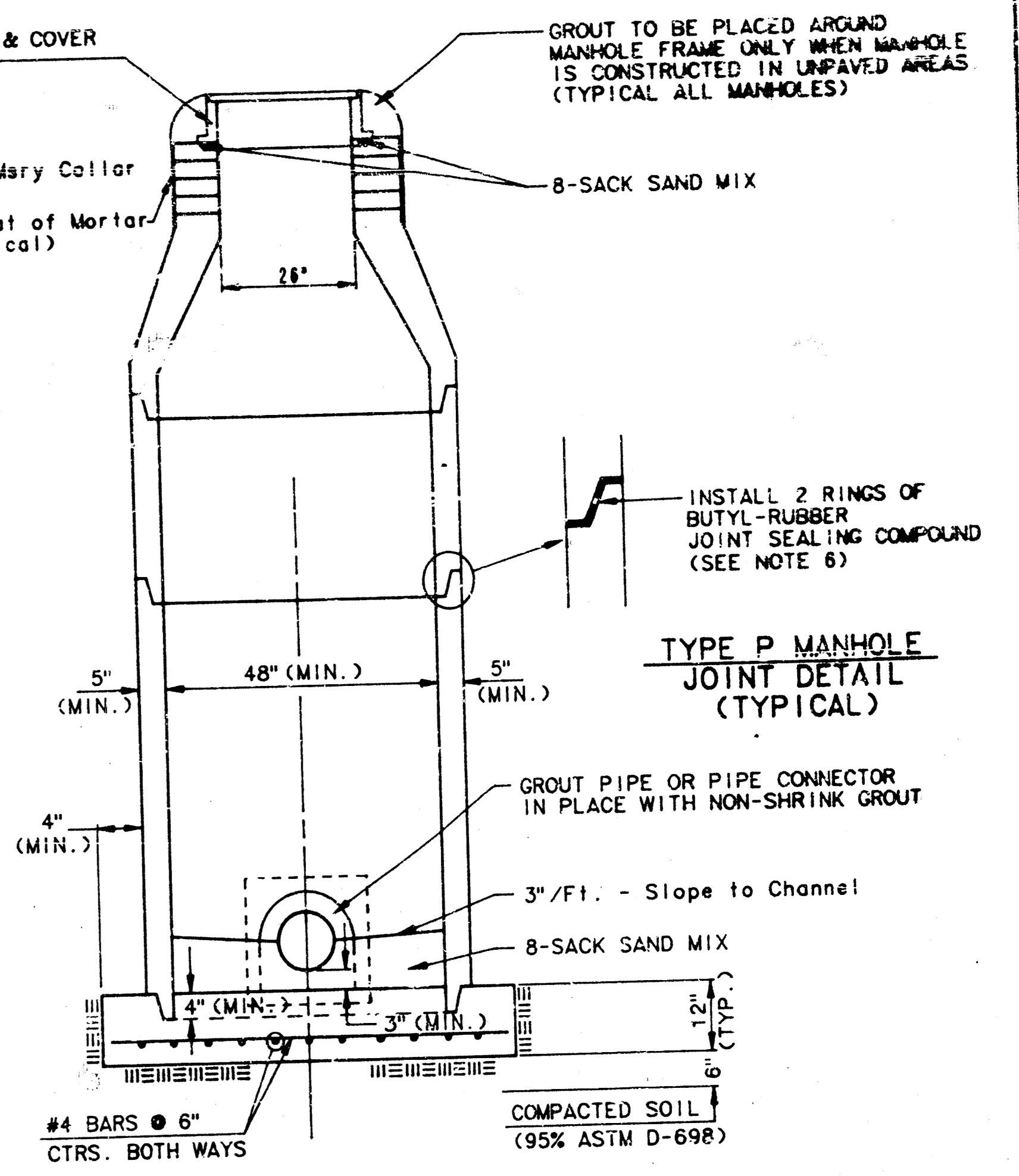
**TYPE P
INSIDE DROP MANHOLE**

11. REINFORCING STEEL SHALL BE INSTALLED IN THE MANHOLE BASES AND SHALL CONSIST OF NO. 4 BARS PLACED ON 6" CENTERS IN BOTH DIRECTIONS. THE MANHOLE BASE REINFORCEMENT SHALL BE PLACED AT LEAST 3" ABOVE THE BOTTOM OF THE MANHOLE BASE. ALL COSTS FOR FURNISHING AND INSTALLING REINFORCING STEEL SHALL BE INCLUDED IN THE UNIT PRICE BID FOR THE MANHOLE.
12. OPENINGS SHALL BE CUT INTO THE MANHOLE WALL WHEN OUTSIDE DROPS ARE CONSTRUCTED ON EXISTING MANHOLES. SUCH OPENINGS CUT INTO EXISTING MANHOLES SHALL BE AS SMALL AS PRACTICAL TO FACILITATE INSTALLING AND GROUDED THE NEW PIPE IN PLACE. WATERSTOP GASKETS SHALL BE USED WITH P.V.C. AND A.B.S. COMPOSITE PIPE. THE NEW PIPE SHALL BE GROUDED INTO THE OPENING USING AN APPROVED NON-SHRINK GROUT FOR THE FULL MANHOLE WALL THICKNESS. THE EXTERIOR OF THE COMPLETED CONNECTION SHALL BE SEALED WITH AN APPROVED BITUMINOUS COATING SUCH THAT THE CONNECTION WILL BE WATER-TIGHT. FLOOR OF MANHOLE SHALL BE MODIFIED TO FORM NEW FLOW CHANNEL FOR THE NEW CONNECTION AS INDICATED BY THE DRAWING. THIS WORK, INCLUDING MODIFICATION OF MANHOLE FLOOR, SHALL BE PAID FOR AT THE UNIT PRICE BID FOR OUTSIDE DROP STACK CONSTRUCTED ON EXISTING MANHOLE.
13. THE FLOORS OF ALL MANHOLES SHALL BE SHAPED WITH FLOW CHANNELS SUCH THAT THE MANHOLES WILL BE SELF-CLEANING AND FREE OF AREAS WHERE SOLIDS COULD BE DEPOSITED AS SEWAGE FLOWS THROUGH THE MANHOLE FROM ALL INLET PIPES TO THE OUTLET PIPE. FLOW CHANNELS SHALL BE FORMED TO MATCH THE BOTTOM HALVES OF THE INFLOWING PIPES AND THE OUTFLOWING PIPE AS SHOWN BY THE DRAWINGS EXCEPT FOR INSIDE DROP MANHOLES. FLOW CHANNELS FOR INSIDE DROP MANHOLES SHALL BE CONSTRUCTED AS INDICATED BY THE DRAWING. MANHOLE FLOORS SHALL HAVE SLOPES OF 3 INCHES PER FOOT IN THE AREAS OUTSIDE OF THE FLOW CHANNELS SLOPED TOWARD THE FLOW CHANNELS. PIPES LAID THROUGH MANHOLES SHALL HAVE THE TOP HALF REMOVED TO NEAT LINES FOR THE FULL INSIDE DIAMETER OF THE MANHOLE. MANHOLE FLOORS SHALL THEN BE SHAPED AROUND THE BOTTOM HALF OF THE PIPE WHICH FORMS THE FLOW CHANNEL.
14. PIPES INSTALLED WITHIN THE EXCAVATION MADE FOR THE MANHOLE SHALL BE CRADLED WITH CONCRETE TO THE LIMITS OF THE MANHOLE EXCAVATION. WHEN CLAY PIPE IS USED, THE CRADLE SHALL EXTEND TO THE FIRST JOINT OUTSIDE THE MANHOLE. THE CRADLE SHALL BE TERMINATED AT THE CLAY PIPE JOINT IN A MANNER WHICH WILL MAINTAIN THE FLEXIBILITY OF THE JOINT. COST OF CRADLE WITHIN MANHOLE EXCAVATION OR TO CLAY PIPE JOINTS ADJACENT TO MANHOLE SHALL BE INCLUDED IN THE UNIT PRICE BID FOR THE MANHOLE.



**TYPE P
OUTSIDE DROP MANHOLE**

15. MANHOLE COVER CASTINGS AND MANHOLE FRAME CASTINGS SHALL CONFORM TO THE REQUIREMENTS AS INDICATED IN THE STANDARD SPECIFICATIONS AND AS SHOWN IN THE STANDARD DETAIL DRAWING.
16. THE VERTICAL DROP IN INSIDE DROP MANHOLES SHALL NOT EXCEED 4' FOR INFLOWING PIPES SIZED 12" OR SMALLER AND 2' FOR INFLOWING PIPES LARGER THAN 12". THE CROWNS OF INFLOWING PIPES SHALL NEVER BE SET LOWER THAN THE CROWN OF THE OUTFLOWING PIPE.
17. STANDARD MANHOLES AND STANDARD INSIDE DROP MANHOLES SHALL BE BID AS STANDARD MANHOLES FOR THE TYPE AND DIAMETER INDICATED. OUTSIDE DROP MANHOLES SHALL BE BID AS STANDARD OUTSIDE DROP MANHOLES FOR THE TYPE AND DIAMETER INDICATED. ALL MANHOLE DIAMETERS WILL BE 4' UNLESS INDICATED OTHERWISE.
18. A BRICK MASONRY COLLAR SHALL BE INSTALLED BETWEEN THE CAST IRON FRAME AND THE CONCENTRIC CONE. THE COLLAR WILL HAVE 8" WALLS AND A VERTICAL HEIGHT OF 6" MINIMUM AND 18" MAXIMUM. A 1" COAT OF MORTAR WILL BE PLASTERED ON THE OUTSIDE OF THE COLLAR.



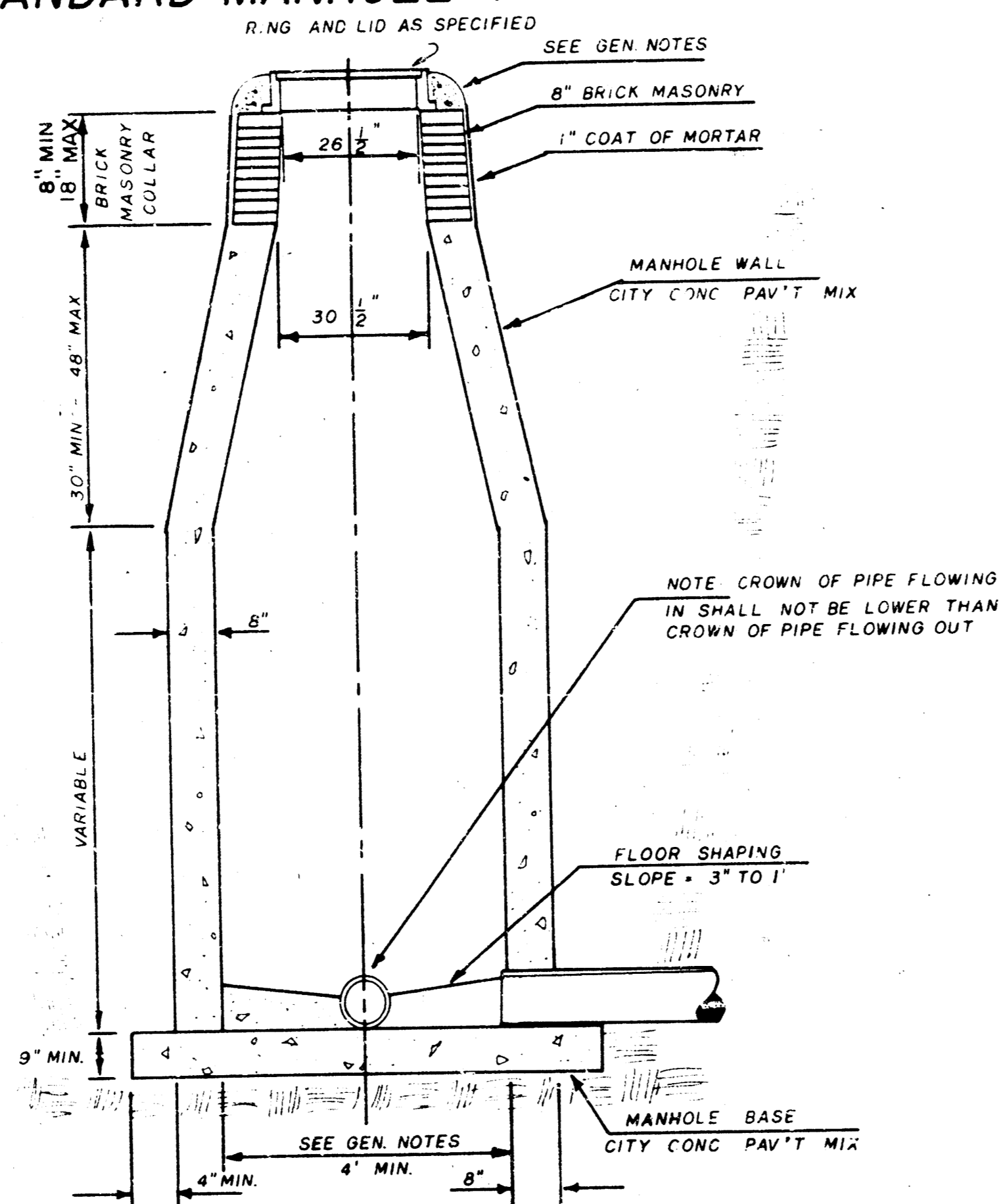
**SECTION X
(TYPICAL)**

SEWER APPURTENANCES DETAILS

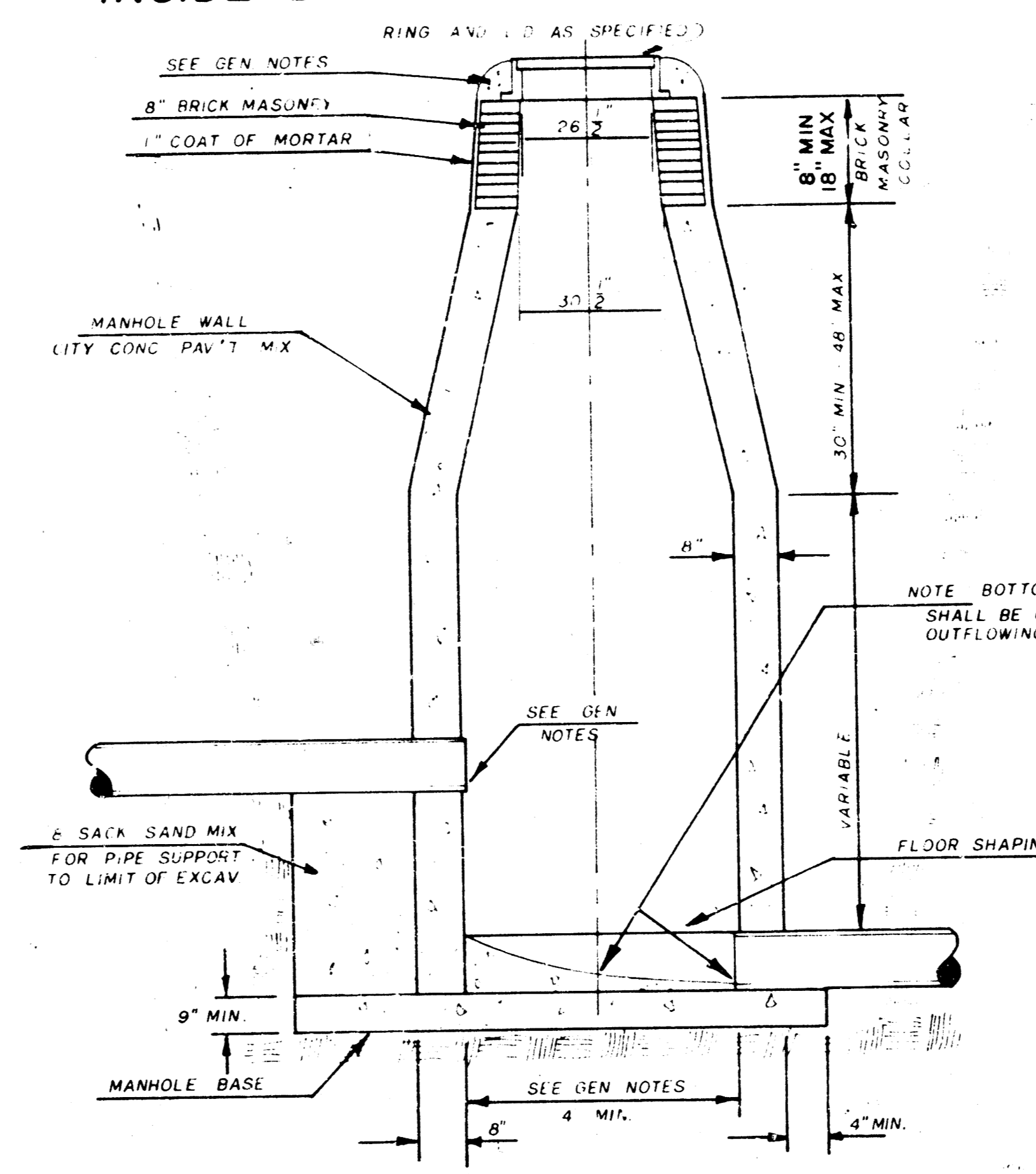
ADOPTED AS STANDARD DESIGN
BY

City of Wichita, Kansas

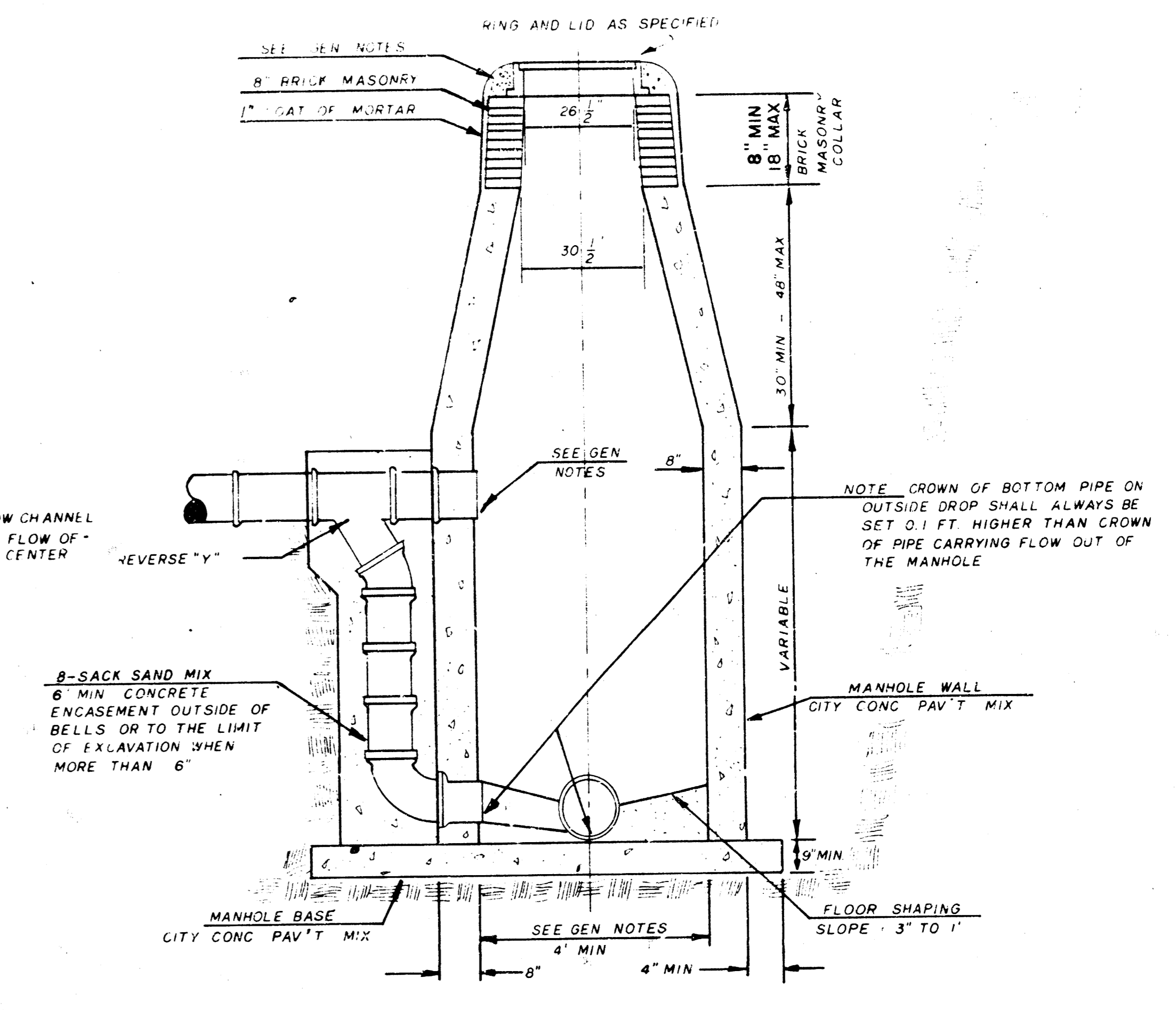
STANDARD MANHOLE TYPE "C"



INSIDE DROP MANHOLE TYPE "C"



OUTSIDE DROP MANHOLE TYPE "C"



GENERAL NOTES

- MORTAR USED IN MASONRY CONSTRUCTION SHALL CONTAIN 8 SACKS OF CEMENT PER CUBIC YARD. CONCRETE USED IN MANHOLE WALLS AND BASES SHALL CONFORM TO THE REQUIREMENTS OF CONCRETE FOR CONCRETE PAVEMENT CONSTRUCTION AS SPECIFIED IN THE CITY STANDARD PAVING SPECIFICATIONS USING CITY CONCRETE PAVEMENT MIX WITHOUT AIR ENTRAINING ADMIXTURE. MORTAR SHALL BE PLACED AROUND THE MANHOLE RING AS SHOWN ON THE DRAWINGS WHEN MANHOLES ARE CONSTRUCTED IN UNPAVED AREAS. TYPE "C" MANHOLES CAN BE CONSTRUCTED ONLY WHERE PIPE SIZES ARE 8" OR SMALLER. THE INSIDE DIAMETER OF TYPE "C" MANHOLES SHALL BE 4'. COMPLETED MANHOLE SHALL BE WITHOUT LEAKS AND WATER TIGHT.
- REINFORCING STEEL SHALL BE INSTALLED IN THE MANHOLE BASE. REINFORCING STEEL SHALL CONSIST OF NO. 4 BARS PLACED ON 6" CENTERS IN BOTH DIRECTIONS. REINFORCING STEEL SHALL BE PLACED 6" ABOVE THE BOTTOM OF THE MANHOLE BASE. COST OF FURNISHING AND INSTALLING REINFORCING STEEL SHALL BE INCLUDED IN THE UNIT PRICE BID FOR THE MANHOLE.
- AN OPENING SHALL BE CUT IN THE MANHOLE WALL FOR THE UPPER INLET PIPE FOR INSIDE AND OUTSIDE DROP MANHOLES. THE UPPER INLET PIPE SHALL BE GROUTED INTO THIS OPENING WITH NON-SHRINK GROUT. THE EXTERIOR OF THIS COMPLETED CONNECTION SHALL BE SEALED WITH AN APPROVED BITUMINOUS COATING SUCH THAT THE CONNECTION WILL BE WATER TIGHT.
- THE FLOORS OF ALL MANHOLES SHALL BE SHAPED WITH FLOW CHANNELS SUCH THAT THE MANHOLES WILL BE SELF CLEANING AND FREE OF AREAS WHERE SOLIDS COULD BE DEPOSITED AS SEWAGE FLOWS THROUGH THE MANHOLE FROM ALL INLET PIPES TO THE OUTLET PIPE. FLOW CHANNELS SHALL BE FORMED TO MATCH THE BOTTOM HALVES OF THE INFLOWING PIPES AND THE OUTFLOWING PIPE AS SHOWN BY THE DRAWINGS EXCEPT FOR INSIDE DROP MANHOLES. FLOW CHANNELS FOR INSIDE DROP MANHOLES SHALL BE CONSTRUCTED AS INDICATED BY THE DRAWING. MANHOLE FLOORS SHALL HAVE SLOPES OF 3 INCHES PER FOOT IN THE AREAS OUTSIDE OF THE FLOW CHANNELS SLOPED TOWARD THE FLOW CHANNELS. PIPES LAID THROUGH MANHOLE SHALL HAVE THE TOP HALF REMOVED TO NEAT LINES FOR THE FULL INSIDE DIAMETER OF THE MANHOLE. MANHOLE FLOORS SHALL THEN BE SHAPED AROUND THE BOTTOM HALF OF THE PIPE WHICH FORMS THE FLOW CHANNEL.
- PIPES INSTALLED WITHIN THE EXCAVATION MADE FOR THE MANHOLE SHALL BE CRADLED WITH CONCRETE TO THE LIMITS OF THE MANHOLE EXCAVATION. WHEN CLAY PIPE IS USED, THE CRADLE SHALL EXTEND TO THE FIRST JOINT OUTSIDE THE MANHOLE. THE CRADLE SHALL BE TERMINATED AT THE CLAY PIPE JOINT IN A MANNER WHICH WILL MAINTAIN THE FLEXIBILITY OF THE JOINT. COST OF CRADLE WITHIN MANHOLE EXCAVATION OR TO CLAY PIPE JOINTS ADJACENT TO MANHOLE SHALL BE INCLUDED IN THE UNIT PRICE BID FOR THE MANHOLE.
- MANHOLE COVER CASTINGS AND MANHOLE FRAME CASTINGS SHALL CONFORM TO THE REQUIREMENTS AS INDICATED IN THE STANDARD SPECIFICATIONS AND AS SHOWN IN THE STANDARD DETAIL DRAWING.
- THE VERTICAL DROP IN INSIDE DROP MANHOLES SHALL NOT EXCEED 4' FOR INFLOWING PIPES SIZED 12" OR SMALLER AND 2' FOR INFLOWING PIPES LARGER THAN 12". THE CROWNS OF INFLOWING PIPES SHALL NEVER BE SET LOWER THAN THE CROWN OF THE OUTFLOWING PIPE.
- STANDARD MANHOLES TYPE "C" AND STANDARD INSIDE DROP MANHOLES TYPE "C" SHALL BE BID AS STANDARD MANHOLES FOR THE TYPE AND DIAMETER INDICATED. OUTSIDE DROP MANHOLES TYPE "C" SHALL BE BID AS STANDARD OUTSIDE DROP MANHOLES FOR THE TYPE AND DIAMETER INDICATED. ALL MANHOLE DIAMETERS WILL BE 4' UNLESS INDICATED OTHERWISE.

MANHOLE FRAME AND COVER DETAIL

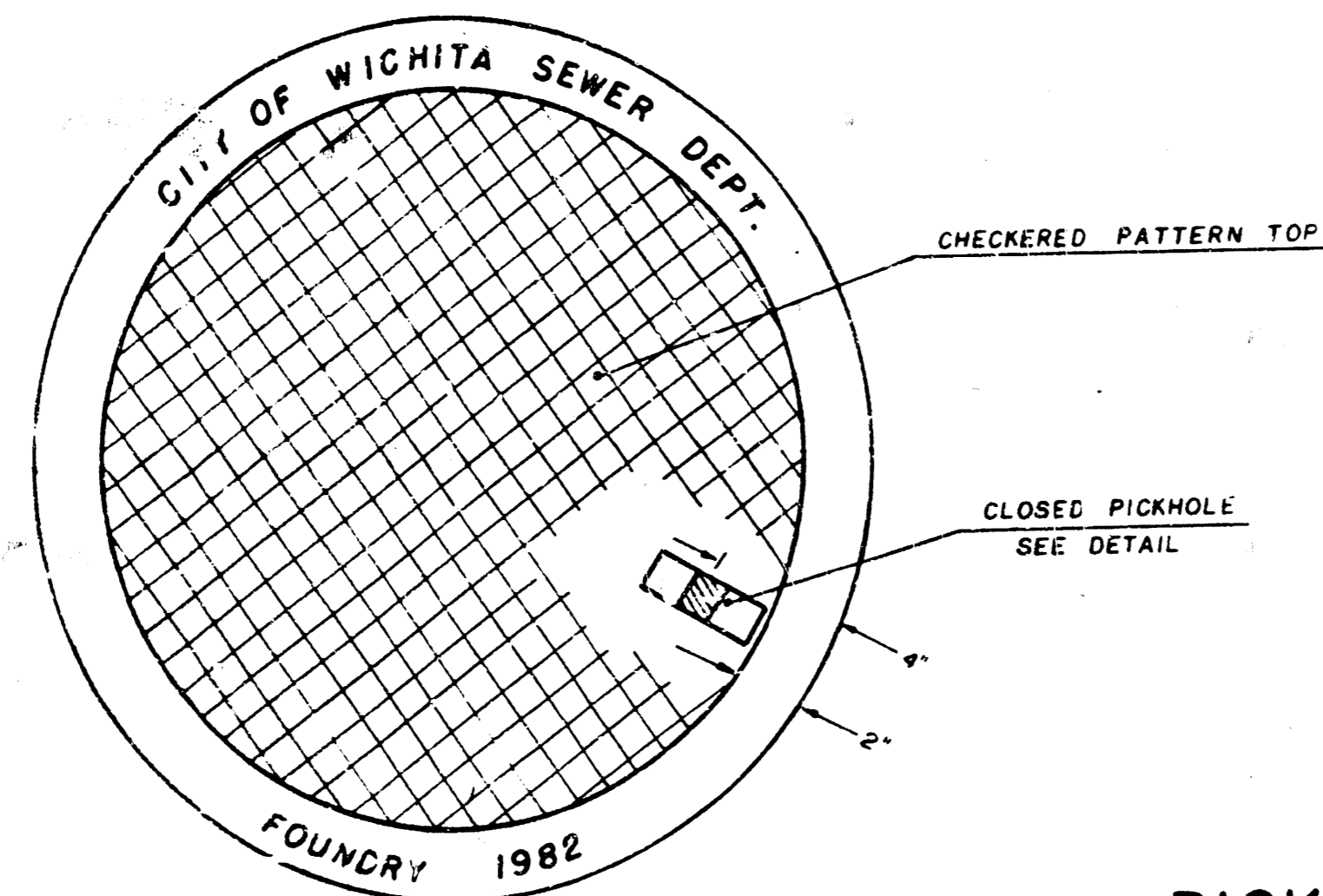
ADOPTED AS STANDARD DESIGN

BY

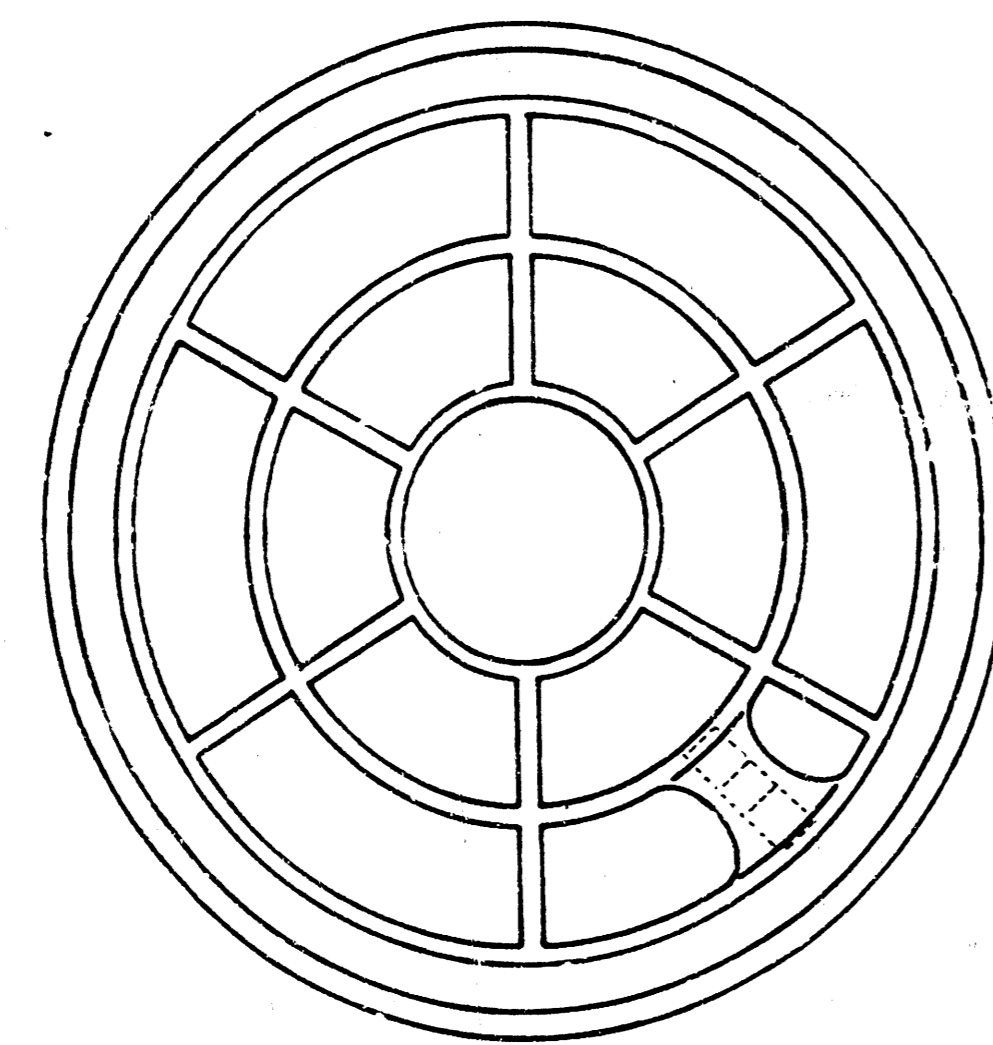
City of Wichita, Kansas

MANHOLE COVER

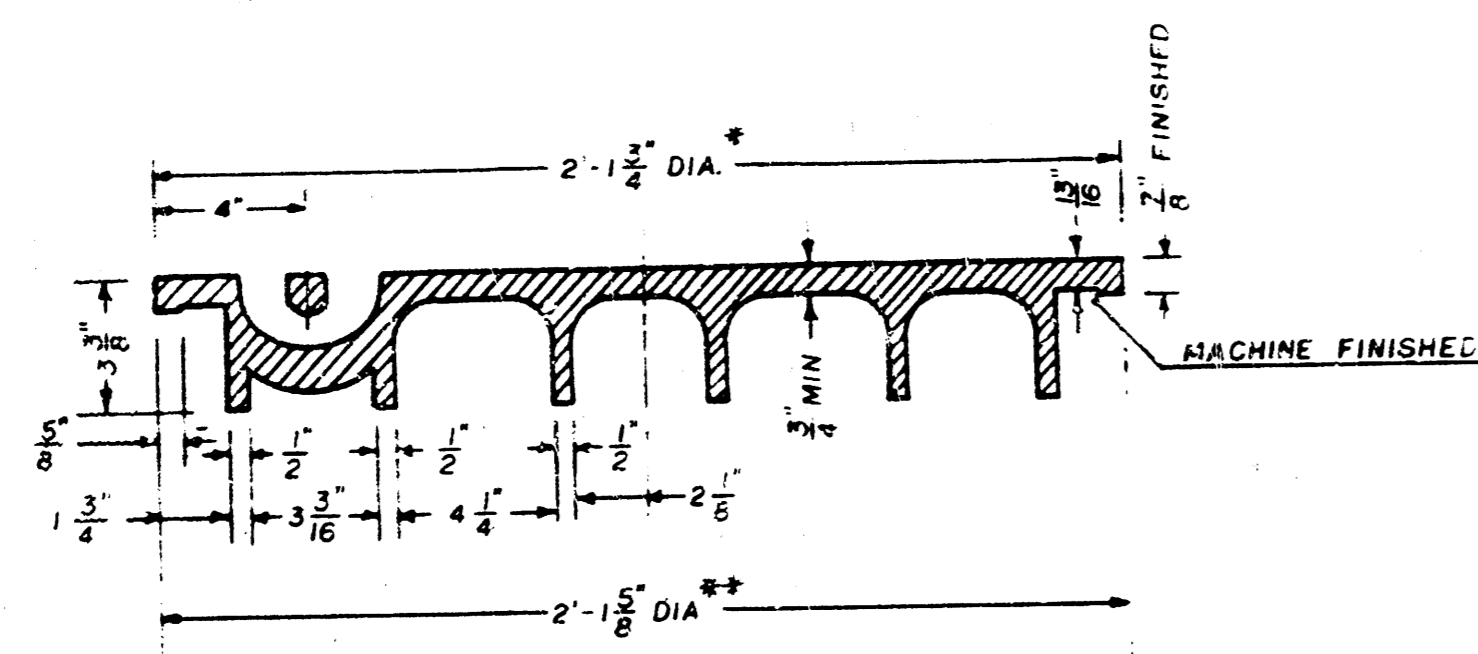
Weight: 180 Lbs.



TOP VIEW



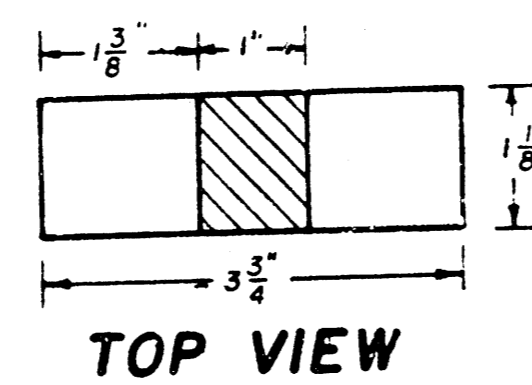
BOTTOM VIEW



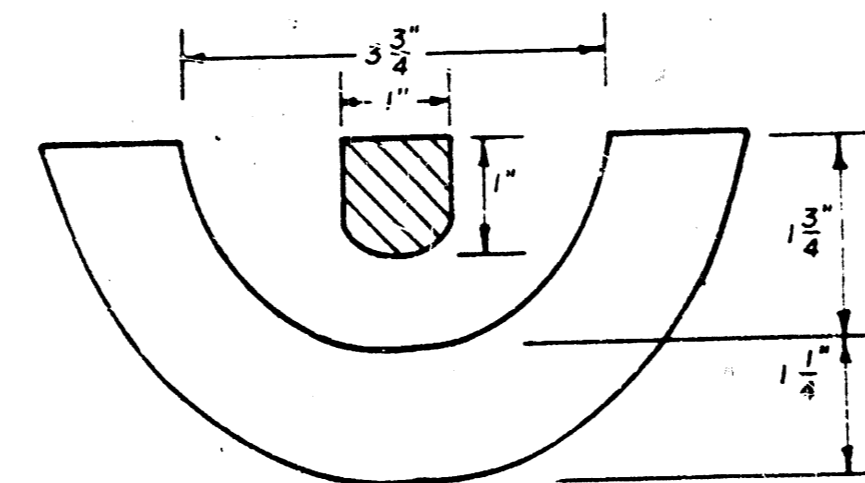
SECTION VIEW

* OUTSIDE DIA. TOP OF COVER
** OUTSIDE DIA. BOTTOM OF COVER

PICKHOLE DETAIL



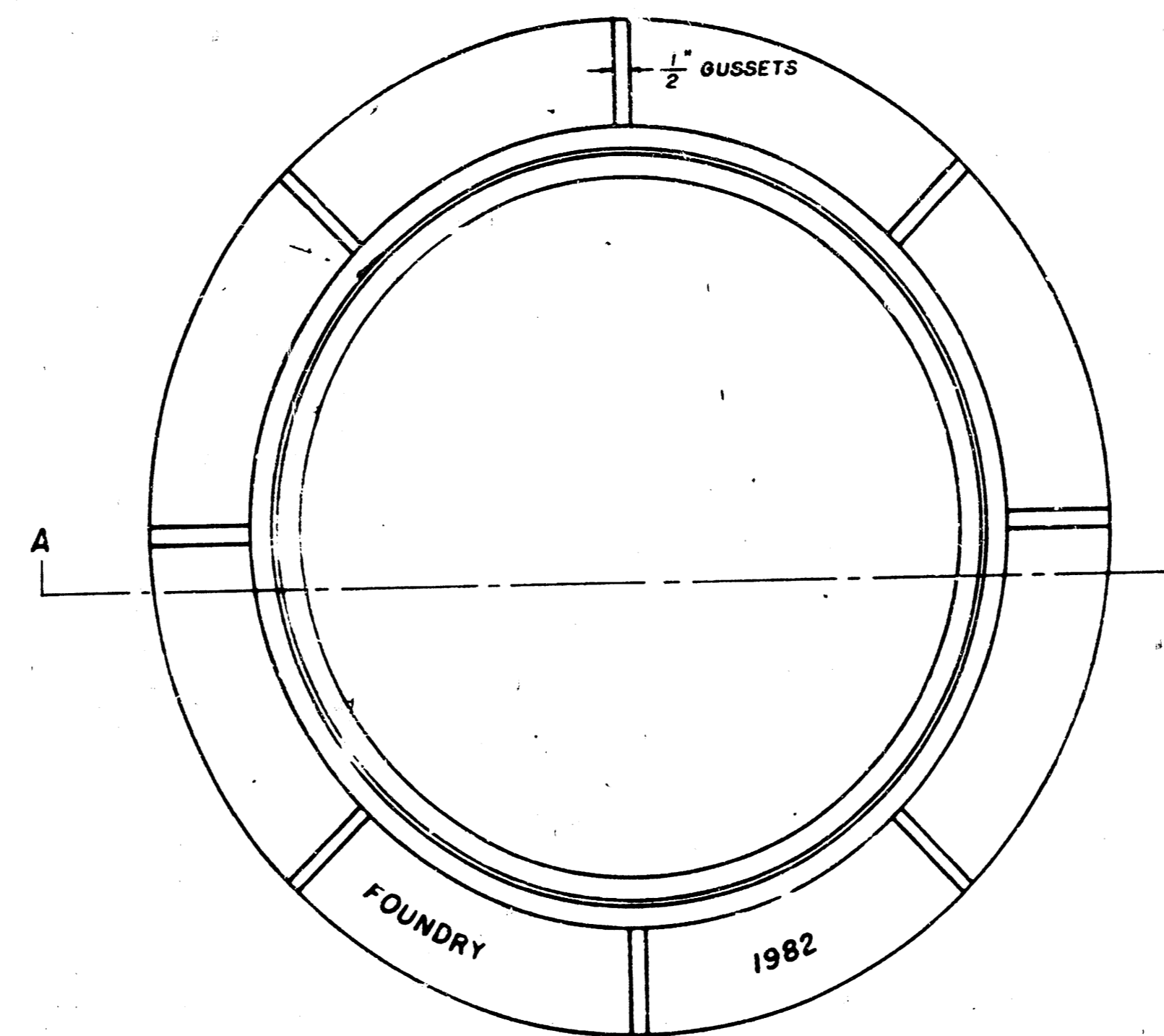
TOP VIEW



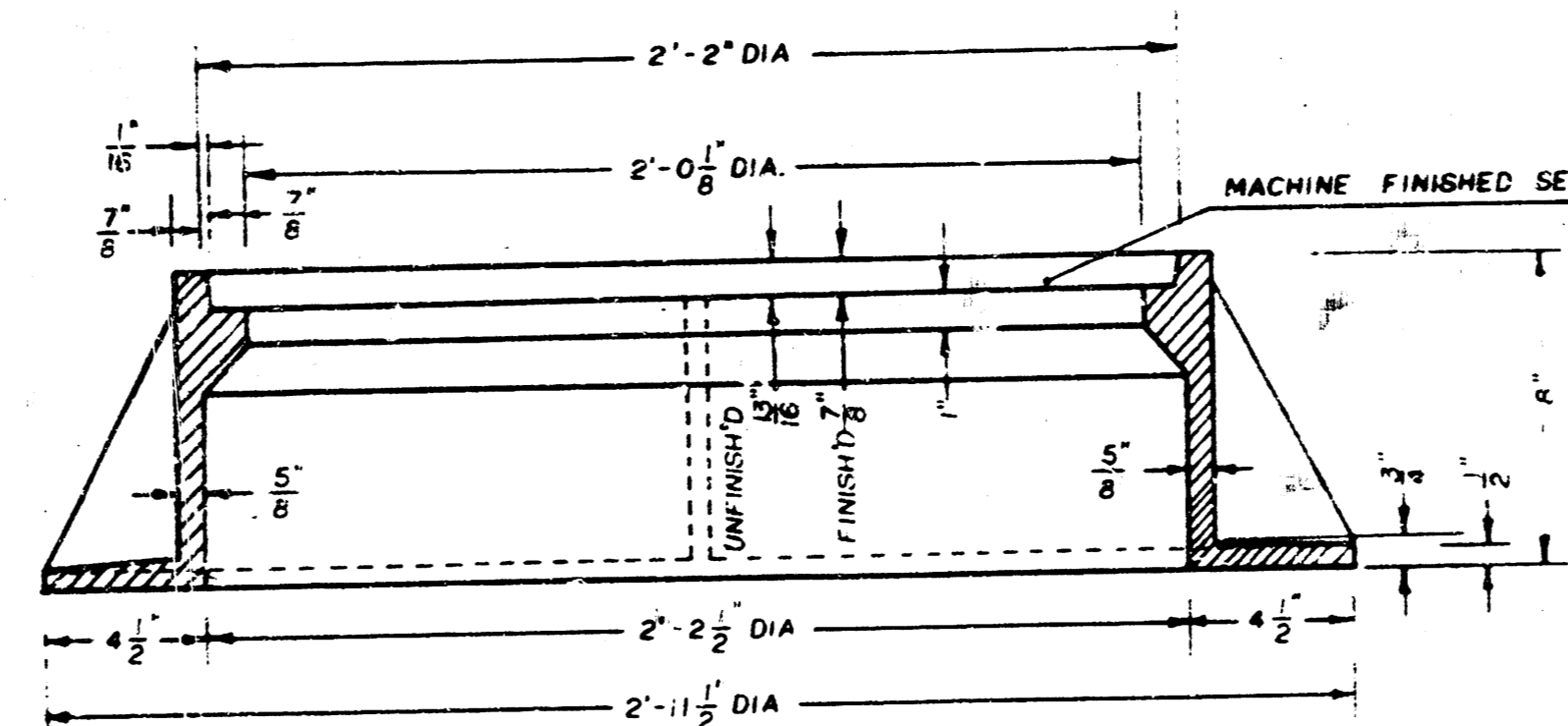
SECTION VIEW

MANHOLE FRAME

Weight: 240 Lbs.



TOP VIEW



SECTION A-A

GENERAL NOTES

- MANHOLE CASTINGS SHALL BE MANUFACTURED USING GOOD QUALITY GRAY IRON CONFORMING TO CLASS 30 OF A.S.T.M. DESIGNATION A-48. DIMENSIONS AND WEIGHTS SHOWN ON THE DETAILED DRAWINGS SHALL BE CONSIDERED AS MINIMUM REQUIREMENTS AND ANY DEVIATIONS FROM THE DIMENSIONS SHOWN MUST BE SPECIFICALLY APPROVED. THE FINISHED CASTINGS SHALL BE OF UNIFORM QUALITY, FREE FROM BLOWHOLES, POROSITY, HARD SPOTS, SHRINKAGE DISTORTIONS OR OTHER DEFECTS.
- MANHOLE CASTINGS SHALL BE COATED WITH AN ASPHALT PAINT RESULTING IN A SMOOTH, TOUGH AND TENACIOUS COATING WHICH IS NOT BRITTLE OR TACKY.
- MANHOLE CASTINGS SHALL BE MANUFACTURED SUCH THAT A COVER MANUFACTURED BY ANY ONE FOUNDRY WILL FIT INTERCHANGEABLY INTO A FRAME MANUFACTURED BY ANOTHER FOUNDRY AND STILL MEET ALLOWABLE CLEARANCES AND NON-ROCKING REQUIREMENTS. THIS WILL REQUIRE MANUFACTURING OF THE MATCHING FACES ON THE COVER AND THE FRAME TO CLOSE TOLERANCES.
- THE OUTSIDE CIRCUMFERENCE OF THE VERTICAL FACE OF THE COVER AND THE INSIDE CIRCUMFERENCE OF THE VERTICAL FACE IN THE FRAME RECESS SHALL BE MANUFACTURED TO TOLERANCES SUCH THAT THE CLEARANCE BETWEEN THE COVER AND FRAME WILL NOT EXCEED 1/8" AT ANY POINT AROUND THE CIRCUMFERENCE OF THE COVER. THE SEATING SURFACES BETWEEN THE COVER AND FRAME SHALL BE MACHINED SUCH THAT THESE SURFACES SHALL MAKE FULL CONTACT FOR THEIR FULL CIRCUMFERENCE TO PRECLUDE THE COVER FROM ROCKING IN THE FRAME.
- THE MANHOLE FRAME AND COVER SHALL BE MARKED WITH LETTERING INDICATING THE NAME OF THE MANUFACTURER AND THE YEAR WHEN THE COVER OR FRAME WAS CAST. THE COVER SHALL BE FURTHER IDENTIFIED WITH REGARDS TO OWNERSHIP USING LETTERS AT LEAST 1" IN HEIGHT. THIS IDENTIFICATION SHALL BE "CITY OF WICHITA SEWER DEPARTMENT". THE WORD DEPARTMENT MAY BE ABBREVIATED. THE TEXTURE OF THE TOP SURFACE OF THE COVER SHALL BE MANUFACTURED IN A CHECKERED PATTERN DESIGN AS INDICATED ON THE DRAWINGS. SMOOTH BLOCKOUTS SHALL BE UTILIZED TO HIGHLIGHT THE LETTERING ON THE COVER SURFACE. THE TOTAL AREA OF SMOOTH SURFACE BLOCKOUT SHALL NOT EXCEED THE AREA AS INDICATED ON THE DRAWING. POSITIONING OF SMOOTH BLOCKOUTS AND LETTERING MAY VARY FROM THAT SHOWN ON THE DETAILED DRAWING.